



# CPM

**the PBS archive add on  
for Plant Maintenance**

**Manual Part C**

**- User Manual -**

Compatible with

- SAP R/3 4.0
- SAP R/3 4.6C
- SAP R/3 Enterprise
- SAP ERP 5.0
- SAP ERP 6.0
- SAP ERP 6.17

**SAP**<sup>®</sup> Certified  
Powered by SAP NetWeaver<sup>®</sup>

February 1, 2015

© 1999 - 2015 PBS Software GmbH

Schwanheimer Strasse 144a

D-64625 Bensheim, Germany

Phone: +49 - 6251 - 174 0

Fax: +49 - 6251 - 174 174

email: [info@pbs-software.com](mailto:info@pbs-software.com)

Internet: [www.pbs-software.com](http://www.pbs-software.com)



PBS archive add ons<sup>®</sup> is a registered trademark of PBS Software GmbH, Bensheim.

SAP, R/3, SAP ERP, SAP NetWeaver, ABAP and others are registered trademarks of SAP SE, Walldorf/Baden.

Acrobat Reader is a registered trademark of Adobe Systems Incorporated.

## Introduction to the PBS ILM Concept

### *Information Lifecycle Management*

Information Lifecycle Management (ILM) means the administration of information related to the time when it is used, taking into account its total costs and compliance. A conclusive, efficient ILM concept must, as a result, control data growth, manage retention rules, and also ensure compliant data storage. Furthermore, an easy access to archived data is decisive and, for example, its transfer during internal and external audits.

### *PBS ILM Concept*

PBS software provides existing SAP customers extensive solutions to put into practice the requirements that were described above for a stringent and successful ILM concept. PBS is considered as an expert for complex, integrated data accesses to archived and database data and meanwhile, also to data that is located on decommissioned SAP systems. In addition to classical SAP data archiving, SAP BI-specific nearline storage is also supported.

### *PBS archive add ons®*

PBS archive add ons always rely on SAP archiving having been carried out successfully. This is the basis for a permanently high-performing SAP system. In principle, you can indeed retain posted documents in the SAP database for a very long time due to a large database capacity. Depending on the document volume, this may result, however, in massive performance losses and, sooner or later, heavily increasing operation costs. The daily backup becomes difficult for large data stocks, for example.

A convenient display and evaluation of archived transaction data – as the SAP user is used to for database data – can often only be carried out in a very restricted manner using SAP standard means depending on the application module. This is particularly the case for large archive data stocks. The PBS archive add ons can be used here. They can be provided for nearly all SAP modules and release levels, and start with a "C" (for Complete) in their description. For example, PBS archive add on CCOPA for the SAP module COPA.

Using the PBS archive add ons you can quickly and easily access your archived data even after data archiving during your day-to-day business. The unrestricted data access is realized by an intelligent indexing concept. It extends the SAP archive infrastructure components and integrates itself optimally with SAP archiving. Archive data that has been indexed can still be provided after a release upgrade immediately, without restrictions, and without migration effort. The PBS archive index is stored in sequential files of the SAP file system in the same way as the SAP archive data. Afterwards, you can access the archive data online via the familiar transactions. The SAP user can display the data from the SAP database and the

archive data simultaneously via the PBS archive add on index. For the user, it seems as though the archived data is still in the SAP database.

The deep integration of the PBS transactions also enables direct navigation to subsequent and previous documents both within the indexed SAP module as well as to linked documents from other SAP modules. This applies not only for resident but also without restrictions for archived data. The benefit for the user increases the more PBS archive add ons are used.

The potential benefits of the ILM concept raises substantially if you take into account the savings that result from the SAP mirror systems. There are usually at least two of them meaning that the saved disk storage can be tripled by performing data archiving. Thus, time is saved for the data backup.

# Table of Contents

<b>1</b>	<b>Introduction</b>	<b>6</b>
<b>2</b>	<b>Application Functions</b>	<b>7</b>
2.1	Navigation within the PBS archive add on CPM up to 4.5x	7
2.2	Navigation in the PBS archive add on CPM from 4.6	8
2.3	Display Transactions	9
2.4	Transaction /PBS/IW33	11
2.5	Transaction /PBS/IW39	13

# 1 Introduction

The *PBS archive add ons* are constructed in modular form and cover the application modules FI, SD, MM, CO etc. with a special program package for exactly this application. You can easily see from the name which *PBS archive add on* belongs to which SAP module: CFI, CSD, CMM, CCO etc. All *PBS archive add ons* have in common that they can be easily installed in the SAP R/3 system via the SAP transport utilities "tp" and "SAINT". For installation details of the *PBS archive add ons* please see the specific installation manual (manual part A).

This manual on the display transaction and application programs was written to support you when using the *PBS archive add on CPM*. Please see the administration manual (part B) regarding construction and administration of the *PBS archive add on CPM*.

The modular user manual of each *PBS archive add on* is composed of partial manuals:

- Part A: Installation
- Part B: Administration, Archive Construction and Maintenance
- Part C: Application Programs / Transactions
- Part D: Migration Support R/2 => R/3 (if available)

There are additional manuals for the PBS utilities: Conversion Tool, Archive Browser, Translation Tool.

Should you have questions regarding the installation of the *PBS archive add ons* or if you have problems when installing the software please call directly the **Service Hotline of PBS Software GmbH**:

Phone: +49 - 6251 - 174 110  
Fax: +49 - 6251 - 174 174  
email: [hotline@pbs-software.com](mailto:hotline@pbs-software.com)

## Release Compatibility

The *PBS archive add on CPM* discussed in this manual runs with the basis programs of SAP SE, D-69190 Walldorf/Baden, system R/3, **releases 4.0, 4.6C, R/3 Enterprise, ERP 5.0, 6.0.**

# 2 Application Functions

## 2.1 Navigation within the PBS archive add on CPM up to 4.5x

PBS has integrated in its software a start menu which corresponds to the SAP standard menu S000 after having registered in the SAP system. The only difference is the additional function button "PBS archive add ons".

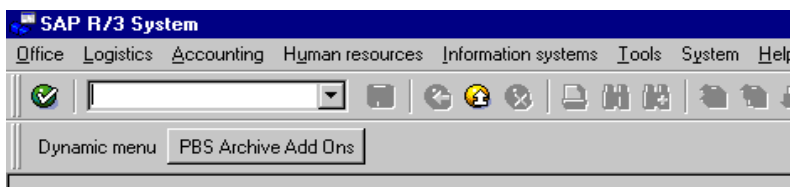


Diagram 1: PBS start menu after having registered in the SAP system

In order to use this menu, you only have to enter start menu "YPBS" for users up to release 3.1 respectively "/PBS/PBS" for users in all 4.0 releases and "/PBS/PBS\_45" from release 4.5.

After pressing the button, you get to the main menu transaction for the *PBS archive add ons*, by which you can address the different modules in a comfortable way.

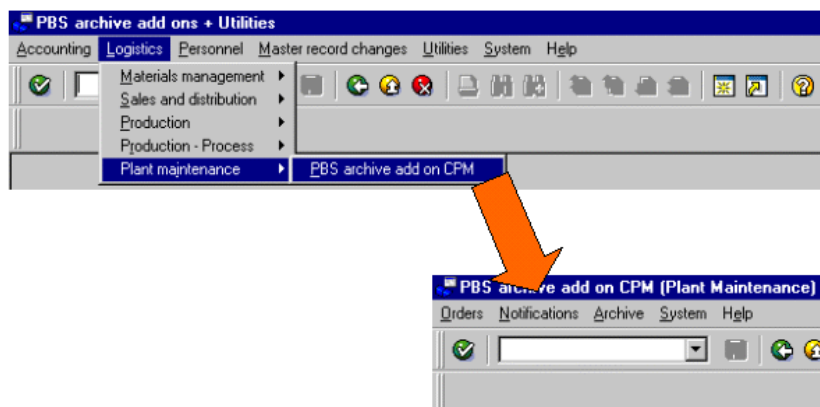
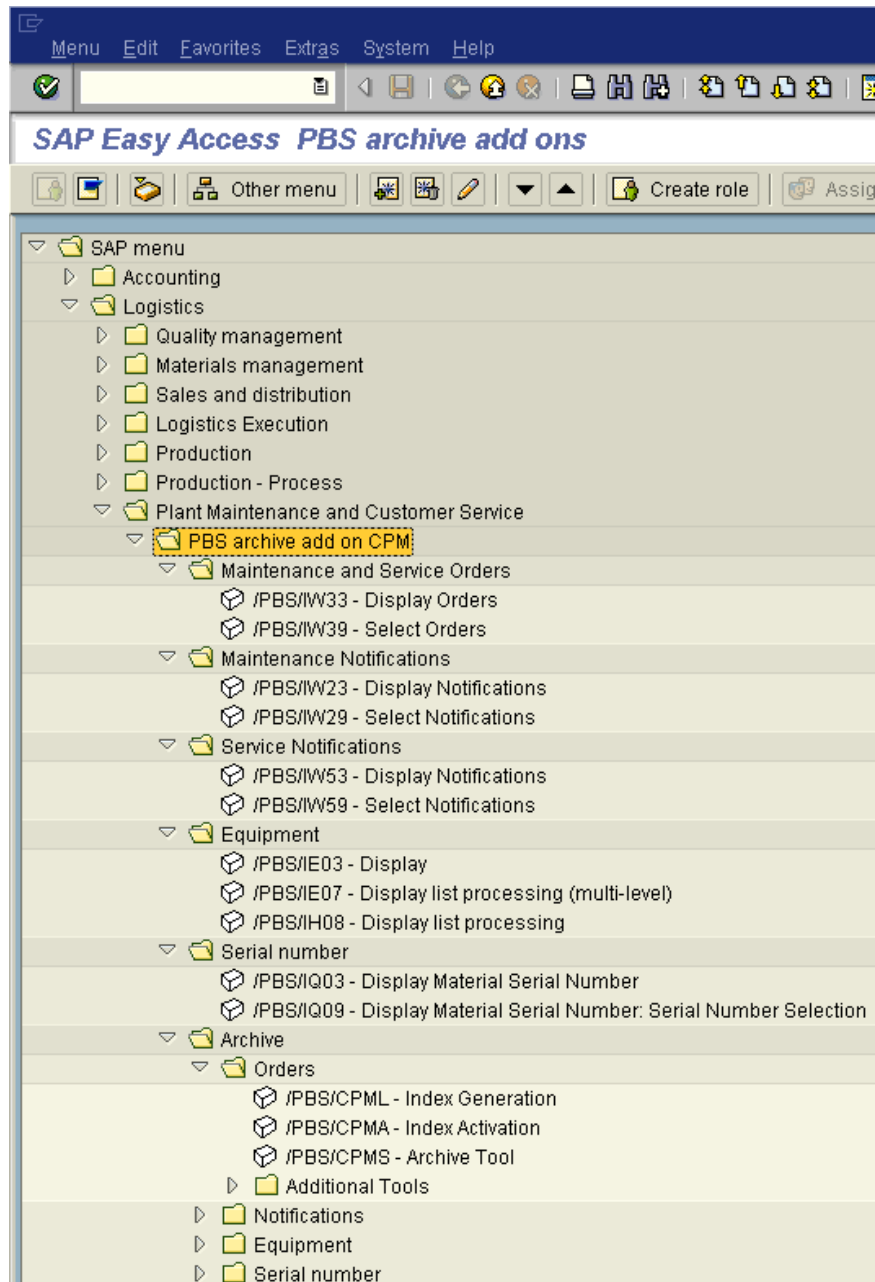


Diagram 2: PBS main menu with branching off to PBS archive add on CPM

## 2.2 Navigation in the PBS archive add on CPM from 4.6

From the Easy Access menu you can easily navigate via the button 'User menu' through the functions of the *PBS archive add on CPM*. This is possible when your system administrator has added the role/activity group to your user profile.





## 2.3 Display Transactions

The current version of the *PBS archive add on CPM* provides the display transactions listed in the following tables. The tables are divided according to the SAP release. The transactions allow a display of archived orders or notifications via the secondary indices of the *PBS archive add on CPM* as well as from the SAP database. The transaction codes of the corresponding SAP transaction are listed for a comparison.

PBS	SAP	Description
ZW33	IW33	Display of Maintenance and Service Orders from database and archive
ZW39	IW39	Select Maintenance and Service Orders from database and archive

**Table 1: Display transactions in the SAP release 3.x**

PBS	SAP	Description
/PBS/IW33	IW33	Display of Maintenance and Service Orders from database and archive
/PBS/IW39	IW39	Select Maintenance and Service Orders from database and archive
/PBS/IW23	IW23	Display of Maintenance Notifications from database and archive
/PBS/IW29	IW29	Select Maintenance Notifications from database and archive
/PBS/IW53	IW53	Display of Service Notifications from database and archive
/PBS/IW59	IW59	Select Service Notifications from database and archive

**Table 2: Display transactions in the SAP release 4.0**

PBS	SAP	Description
/PBS/IW33	IW33	Display of Maintenance and Service Orders from database and archive
/PBS/IW39	IW39	Select Maintenance and Service Orders from database and archive

**Table 3: Display transactions in the SAP release 4.5**

PBS	SAP	Description
/PBS/IW33	IW33	Display of Maintenance and Service Orders from database and archive
/PBS/IW39	IW39	Select Maintenance and Service Orders from database and archive
/PBS/IW23	IW23	Display of Maintenance Notifications from database and archive
/PBS/IW29	IW29	Select Maintenance Notifications from database and archive
/PBS/IW53	IW53	Display of Service Notifications from database and archive
/PBS/IW59	IW59	Select Service Notifications from database and archive
/PBS/IE03	IE03	Display Equipment: Initial screen
/PBS/IE07	IE07	Multi-Level Equipment List
/PBS/IH08	IH08	Display Equipment: Equipment selection
/PBS/IQ03	IQ03	Display Material Serial Number : Initial
/PBS/IQ09	IQ09	Display Material Serial Number : Serial Number Selection

**Table 4: Display transactions from SAP release 4.6 an later**

The functionality of each display transaction is similar to the corresponding SAP transaction. Therefore, the next chapters describe the transactions /PBS/IW33 and /PBS/IW39. The other PBS transactions can be used in the same way.

## 2.4 Transaction /PBS/IW33

The transaction /PBS/IW33 (ZW33) displays archived maintenance orders from the database as well as archived maintenance orders. The selection screen is analogue to the SAP transaction IW33. Archived maintenance orders are marked with an archive indicator.

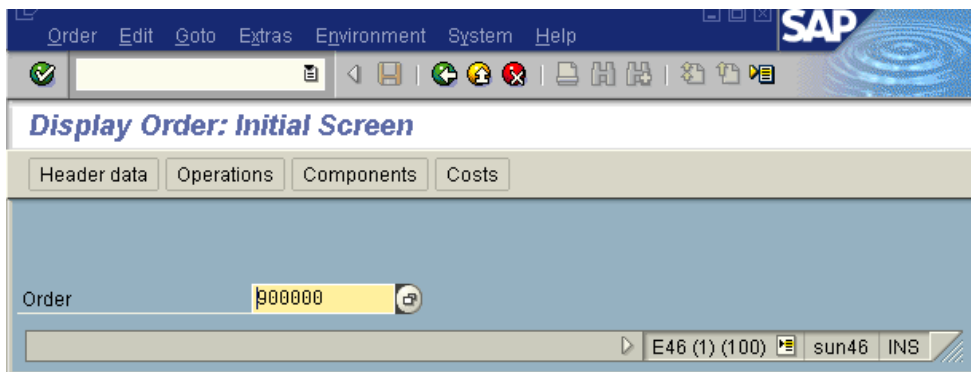


Diagram 3: Selection screen of the transaction /PBS/IW33

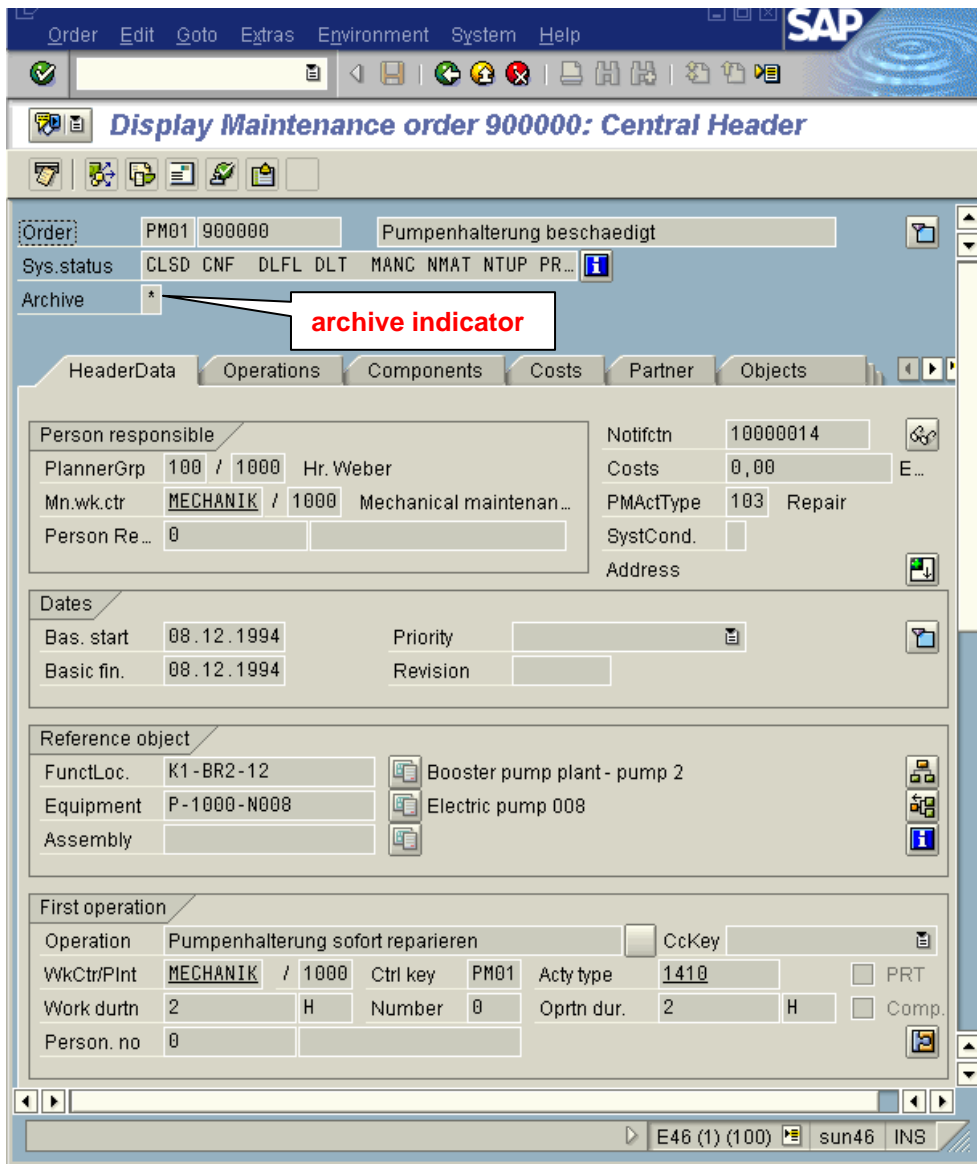


Diagram 4: Displaying an archived maintenance order

The functionality of transaction /PBS/IW33 (ZW33) follows the functionality of SAP transaction IW33. This applies for maintenance orders from the database as well as for maintenance orders from the archive.

## 2.5 Transaction /PBS/IW39

Transaction /PBS/IW39 (ZW33) selects maintenance orders and their business operations from the database and the archive. Analogue to SAP transaction IW39, the selected orders are displayed in a list. Archived maintenance orders are marked with the archive indicator "\*\*".

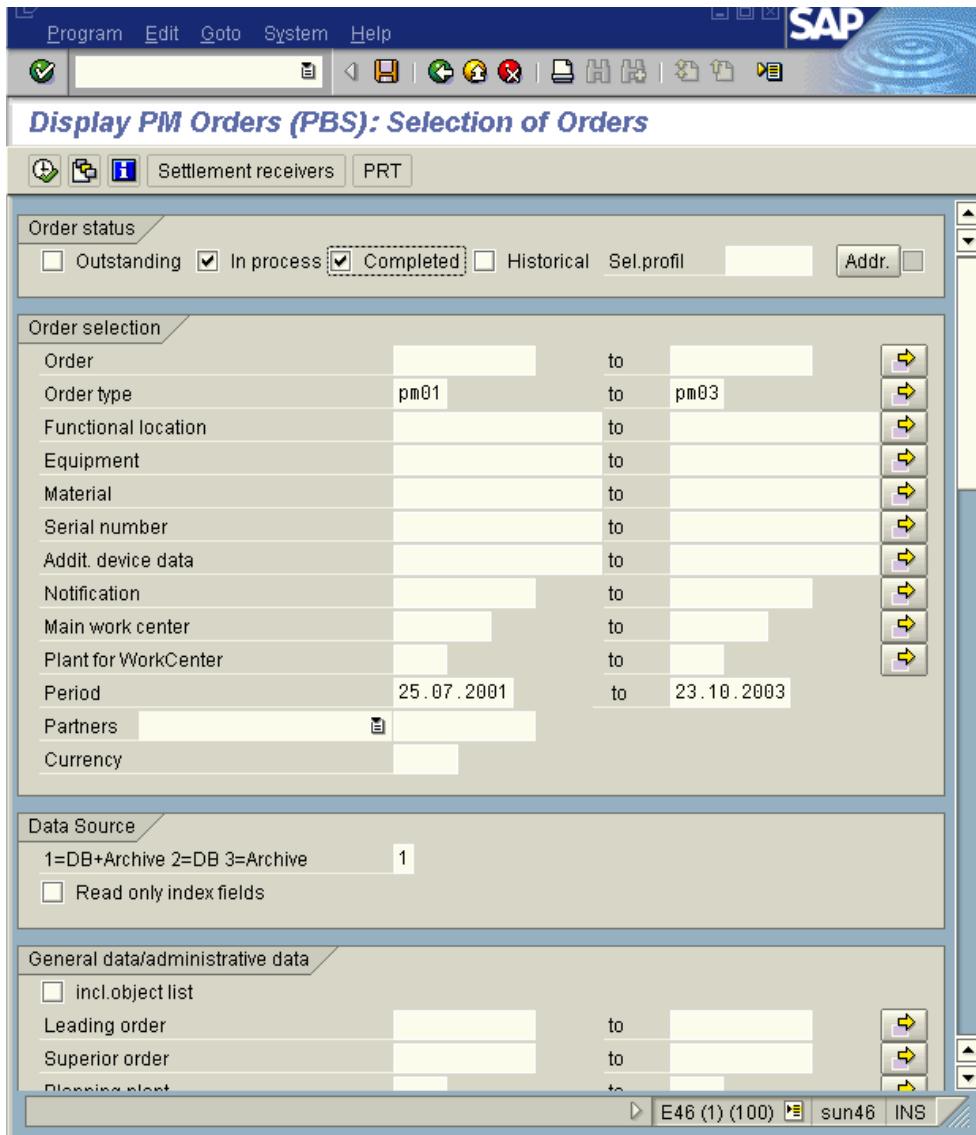


Diagram 5: Selection screen of PBS transaction /PBS/IW39

In the selection screen, the PBS transaction additionally contains the area 'data source'. You can determine the data source with the parameter "1=Archive+DB 2=DB 3=Archive". Entering the number 1, 2 or 3 the orders are displayed either from the R/3 database, the archive or from both data sources. If you mark the checkbox 'Read only index fields', the PBS archive index is read only. The entire order is not read from the SAP ADK file which improves the response time during the selection of larger order lists. However, not all order fields can be displayed.

The screenshot shows the SAP 'Display PM Orders (PBS): List of Orders' window. The table below represents the data shown in the screenshot:

S	A	Order	Type	Bas. start	List name	Short text
		810981	PM02	04.08.2000		1) Wartungsmassnahmen an Pumpe Etanorr
		810984	PM01	04.08.2000	Astralis GmbH	Druckprüfung der Gasrohre
*		811000	PM02	11.12.2001		dfb fdb fb
		811040	PM01	26.04.2002		1234
*		900000	PM01	08.12.1994		Pumpenhalterung beschaedigt
		900001	PM01	08.12.1994		Pumpe leckt und hat offenbar reduzierte
		900002	PM01	08.12.1994		Reinigung der Klaerschlammanlage
		900003	PM01	08.12.1994		Modifikation der Laufraeder
		900004	PM01	09.12.1994		Modifikation: Test leistungsge. P-Motor
		900005	PM01	01.03.1995		Modifikation der Laufraeder
		900007	PM02	27.02.1995		Vierteljahresinspektion Feuerloescher
		900008	PM02	01.03.1995	Astralis GmbH	Pos.1: Wartungsmassnahmen an Pumpe N00

The 'archive indicator' callout points to the asterisk in the 'S' column of the row with Order 900000.

Diagram 6: Output list of PBS transaction /PBS/IW39