



Orion-O User Manual



Version 1.5.5
Document Version: 1.5.5.16
January 2014

Copyright © 2005-2014, SURF Communication Solutions Ltd.

This document contains confidential and proprietary information of SURF Communication Solutions Ltd., henceforth referred to as "SURF." All rights reserved. No part of this documentation may be reproduced in any form or by any means or used to make any derivative work (such as translation, transformation, or adaptation) without written permission from SURF Communication Solutions.

SURF reserves the right to revise this document, and to make changes therein, from time to time without providing notification of such revision or change.

This document contains descriptive information regarding the subject matter herein, and is not an offer to purchase or license any products or services of, or from SURF. SURF expressly disclaims any and all representations or warranties, expressed or implied herein, including but not limited to warranties of merchantability or fitness for a particular purpose. The licensing or sale of any product or service by or of SURF shall only be made in accordance with, and subject to the terms of, an agreement for the relevant product or service, to be signed by both the customer and SURF or its authorized agent or representative. Consequently, SURF shall carry no liability to any such customer based on this document, the information contained herein, or the omission of any other information.

Trademarks

The name "SURF Communication Solutions" is a registered trademark of SURF Communication Solutions Ltd.

Any other trademarks, trade names, service marks or service names owned or registered by any other company and used herein are the property of their respective owners.

SURF Communication Solutions, Ltd.

Tavor Building, P.O. Box 343

Yokne'am 20692 Israel

Tel: +972 (0)73 714-0700

Fax: +972 (0)4 959-4055

| | |
|----------|--|
| Web site | http://www.orionmcu.com/ |
| Email | orion@surfsolutions.com |

Table of Contents

| | | |
|-----------|-----------------------------------|-----------|
| 1. | Overview | 4 |
| 2. | Opening Screen..... | 5 |
| 3. | Joining a Conference | 7 |
| 4. | Dialing Options | 9 |
| 5. | Application Settings | 11 |
| 5.1 | Preferences..... | 12 |
| 5.1.1 | Network | 12 |
| 5.1.2 | Multimedia..... | 12 |
| 5.1.3 | Bandwidth Control | 13 |
| 5.2 | SIP User..... | 14 |

1. Overview

Optimized to be used with SURF's Orion-VX1000/VX2000 infrastructure video conferencing solution, Orion-O provides mobile connectivity solutions to the onsite video conferencing solution provided by the Orion-VX1000/VX2000.

Orion-O provides the following benefits:

- ◆ Simple to use connectivity for voice or video communication solution from any network for a true collaborative experience.
- ◆ Open standard based (SIP, H.264) protocols allow connectivity to most enterprise gateways and systems through the Orion- VX1000/VX2000 video conference solution.
- ◆ Simple and easy to use application.
- ◆ Optimized for Apple iPhone, iPad, and windows.

This manual provides a detailed guidance on the use of the Orion-O, SURF's video conferencing soft-client, for windows. It includes a description of the product, its functionality, features, settings, and operation.

Feedback:

The SURF Technical Support Center is at your service. You may access Warranty Service through our Web Request Form by using the following link: www.orionmcu.com/support

We are committed to constant and perpetual improvement. Your input will greatly help us in our endeavor.

2. Opening Screen

The application can be downloaded from link: <http://www.orionmcu.com/partner-area>.

Download and run the Orion-O video conferencing soft-client from your Windows. Figure 1 pops up:

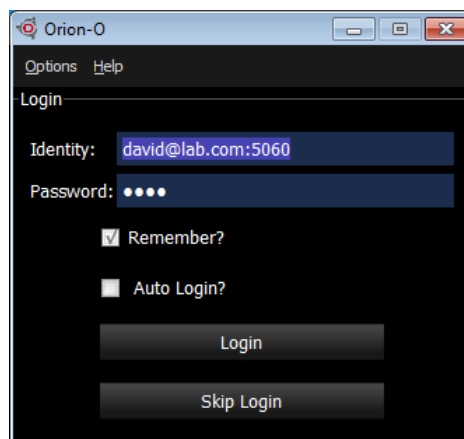
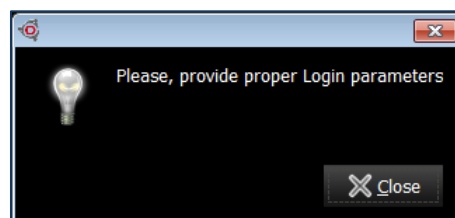


Figure 1: Login

→ To Login:

- ◆ Enter your user name and password in the **Identity** and **Password** fields, respectively. **Identity** needs to be of the one of the following form:
 - <username>@<domain>:<port>
 - <username>@<IP address>:<port>username can be a number or a string
- ◆ **Remember?** When remember box is checked, the application remembers your password for the future entries.
- ◆ **Auto Login?** When auto login box is checked, the application shall not present the login screen and you are automatically logged-in. In order to check the **Auto Login** box **Remember** box should be checked as well.
- ◆ Click on the **Login** button to enter the dialing screen.
If the Identity or the Password values have incorrect syntax, the following message shall appear:



In order to change the Login parameters, SIP User screen can be used as well (see section 5.2).

→ **To skip the registration: Press Skip Login**

In this case the Orion-O does not register to a registrar. The **Current Status** button at the top-left of the screen shall appear in grey.

See Table 4-3 for the dialing options of an unregistered user.

3. Joining a Conference

Following the login operation, the Orion-O dialing screen appears. Note that the **Current Status** is green for a successful login. If Current Status is red, logout, check your **Identity** and **Password** and login again. Figure 2 shows the dialing screen:

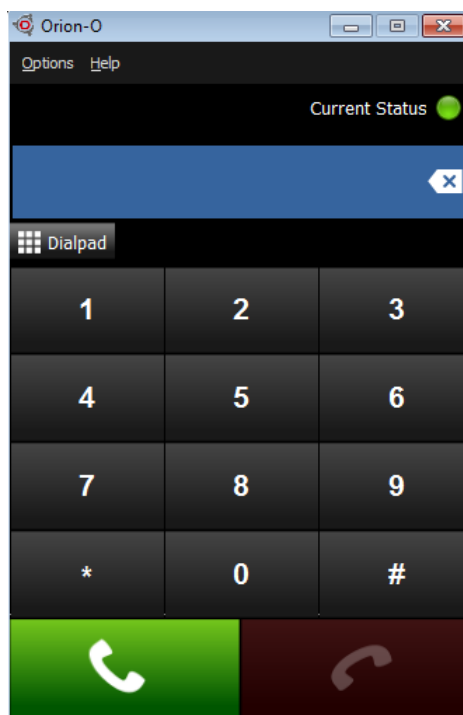


Figure 2: Dialing Screen

➔ **To join a conference:**

- ◆ Edit or enter the pre-registered conference name or number. For dialing options see section 4.
- ◆ Press the green dialing button.

➔ **To share a content with the other participants:**

- ◆ Check that your laptop's webcam is on.
- ◆ Check that the device recognizes your camera by checking the **Video input device** text-box (by selecting Options-> Preferences-> Multimedia).
- ◆ Press the **Start Screen Sharing** button, as shown in the figure below:

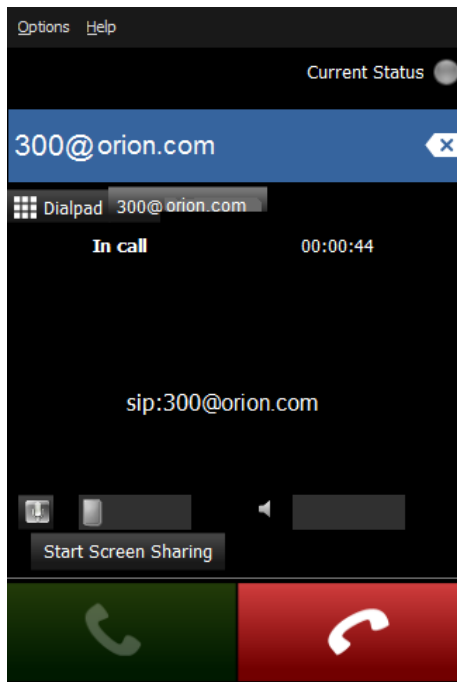


Figure 3: Screen Sharing

➔ **To stop the screen sharing:**

- ◆ Press **Stop Screen Sharing** button.

➔ **To quit the conference:**

- ◆ Press the red dialing button

➔ **To terminate the call:**

- ◆ Press the red dialing button

4. Dialing Options

In order to join a conference, the user can use the access number or the conference number. The following tables show various dialing options per each choice, using the below example:

- ◆ Access Number – 500
- ◆ Conference Number – 100
- ◆ Participant PIN Code – 1
- ◆ Orion-VX1000/VX2000 Domain – Orion.com (Domain name or IP address).

Participant is registered on PBX:

| Dialing Option | PIN Code | Operations and Prompts |
|-------------------|----------|---|
| Access Number | √ | Dial 500 – Prompt: <i>“Please enter your conference number followed by the # key”</i> Dial 100 – Prompt: <i>“Please enter the conference PIN number followed by the # key”</i> Dial 1 – Connected to conference |
| Conference Number | √ | Dial 100 – Prompt <i>“Please enter the conference PIN number followed by the # key”</i> Dial 1 – Connected to conference |
| Access Number | | Dial 500 – Prompt <i>“Please enter your conference number followed by the # key”</i> Dial 100 – Connected to conference |
| Conference Number | | Dial 100 – Connected to conference |

Table 4-1: Dialing Information - Registered on PBX

Participant is registered on Orion-VX1000/VX2000 SIP Build-in Registrar:

| Dialing Option | PIN Code | Operations and Prompts |
|-------------------|----------|--|
| Access Number | √ | Dial 500 – Prompt <i>“Please enter your conference number followed by the # key”</i> Dial 100 – Prompt <i>“Please enter the conference PIN number followed by the # key”</i> Dial 1 – Connected to conference Alternative option (Connecting without prompts): Dial 500*100*1 – Connected to conference |
| Conference Number | √ | Dial 100 – Prompt <i>“Please enter the conference PIN number followed by the # key”</i> Dial 1 – Connected to conference |
| Access Number | | Dial 500 – Prompt <i>“Please enter your conference number followed by the # key”</i> Dial 100 – Connected to conference |
| Conference Number | | Dial 100 – Connected to conference |

Table 4-2: Dialing Information - Registered on Orion-VX1000/VX2000

Participant is not registered:

| Dialing Option | PIN Code | Operations and Prompts |
|-------------------|----------|--|
| Access Number | √ | Dial 500@Orion.com – Prompt <i>“Please enter your conference number followed by the # key”</i> Dial 100 – Prompt <i>“Please enter the conference PIN number followed by the # key”</i> Dial 1 – Connected to conference Alternative option (Connecting without prompts): Dial 500*100*1@Orion.com – Connected to conference |
| Conference Number | √ | Dial 100@Orion.com – Prompt <i>“Please enter the conference PIN number followed by the # key”</i> Dial 1 – Connected to conference |
| Access Number | | Dial 500@Orion.com – Prompt <i>“Please enter your conference number followed by the # key”</i> Dial 100 – Connected to conference |
| Conference Number | | Dial 100@Orion.com – Connected to conference |

Table 4-3: Dialing Information - Not Registered

5. Application Settings

→ To set the application's parameters: Press on Options. The Orion-O setting options appear, as shown below:

- ◆ **Preferences.** Sets the network, multimedia and bandwidth control parameters (see section 5.1).
- ◆ **SIP User.** Sets the user's identity and password, and the login characteristics (see section 2).
- ◆ **Logout.** Logs out from the system, enabling the user to login again. To login, enter the **SIP User** (see section 5.2).
- ◆ **Always start video.** When this check box is not checked, the conference starts without video and as a voice conference only.
- ◆ **Enable self-view.** When the enable self-view box is checked, an additional window opens, showing the image of the user.
- ◆ **Quit.** Quits the application and the user's state shall turn to offline.

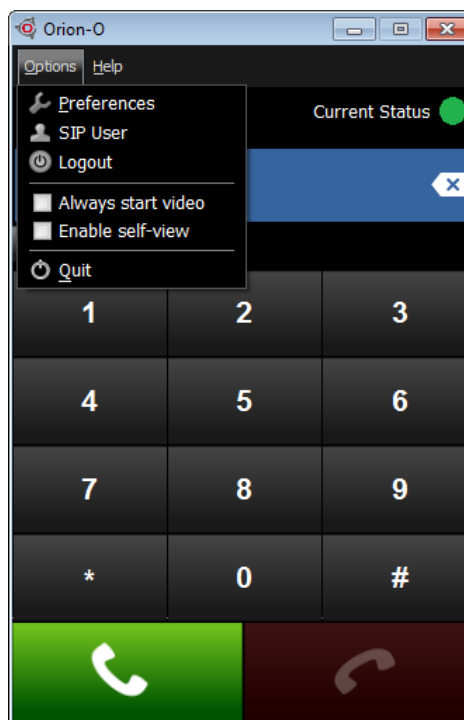


Figure 4: Options

5.1 Preferences

5.1.1 Network

→ For Network settings:

- ◆ Use the **SIP** drop-down menu to choose between:
 - SIP (UDP)
 - SIP (TCP)
 - SIP (TLS)
- ◆ Enter the **SIP** listening port
- ◆ Enter the **Audio RTP/UDP** port
- ◆ Enter the **Video RTP/UDP** port
- ◆ If you are not behind NAT/Firewall, check the **Direct connection to the Internet** box.
- ◆ If you are behind NAT/Firewall, check the **Behind NAT / Firewall** box.
- ◆ Enter your Public IP address.
- ◆ Press **Done** to save the changes and to exist the **Network** settings.

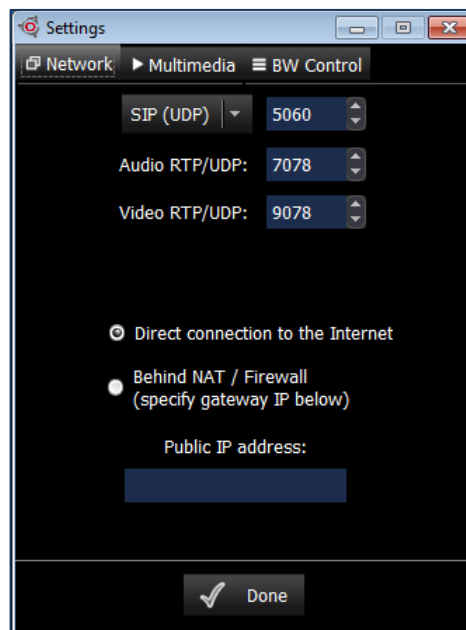


Figure 5: Network Settings

5.1.2 Multimedia

→ For the Multimedia settings:

The device options below depend on your device's available hardware.

Audio

- ◆ Choose your **Playback device** by using the drop-down menu
- ◆ Choose your **Ring device** by using the drop-down menu
- ◆ Choose your **Capture device** by using the drop-down menu

Video

- ◆ Use **Video input device** drop-down menu to choose between:
 - Directshow capture: CyberLink Web Camera Filter
 - Directshow capture; LG Webcam
 - StaticImage: Statis picture
- ◆ Use **Preferred video resolution** drop-down menu to choose between:
 - HD720P (1280X720)
 - VGA (640x480)
 - CIF (352x288)
- ◆ Press **Done** to save the changes and to exist the **Multimedia** settings.

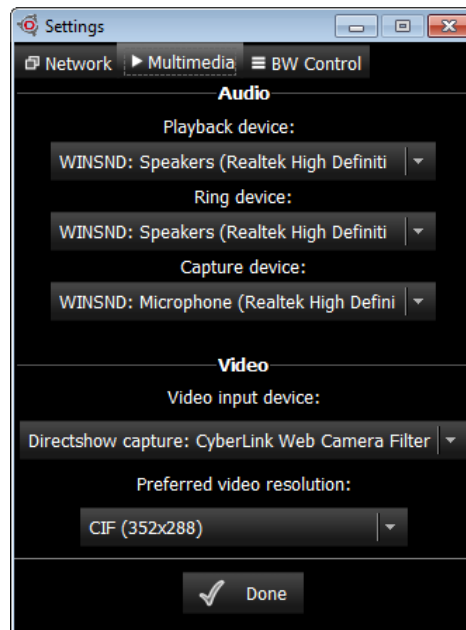


Figure 6: Multimedia

5.1.3 Bandwidth Control

➔ To set the Bandwidth Control:

- ◆ Insert the Download speed limit in Kbit/sec.
Download speed limit is the maximum bit-rate from the network **to your device**.
- ◆ Insert the Upload speed limit in Kbit/sec
Upload speed limit is the maximum bit-rate **from your device** to the network.
Note that when the parameters above are set to zero, no limit has been set for the bit rate.
- ◆ To enable an **adaptive rate control**, check the box.
Adaptive rate control manages the bit rate and does not allow the stream to exceed the entered values.
- ◆ Press **Done** to save the changes and to exist the **Bandwidth Control** settings.

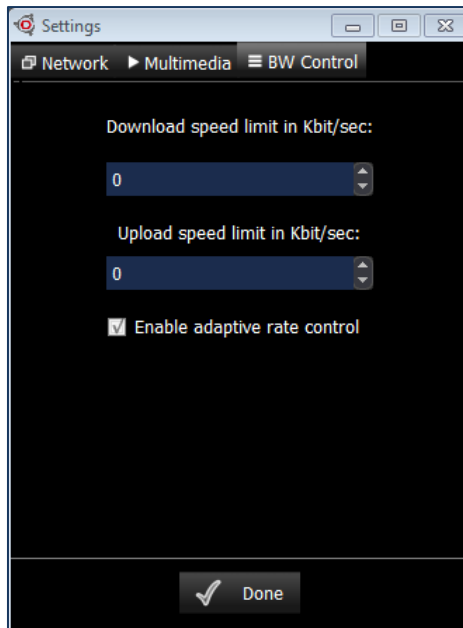


Figure 7: Bandwidth Control

5.2 SIP User

➔ To edit the SIP User's login parameters, Choose SIP User:

- ◆ Press **Logout**, to make the fields editable:
- ◆ Edit the login parameters, as described in the opening screen (see section 2).
- ◆ Enter the Outbound's SIP proxy domain or IP address (optional). The following shows the syntax:
 - <domain>:<port>
 - <IP address>:<port>

Note: Configure the Outbound SIP proxy with the same IP address of the Registrar, or leave this field blank (preferred).

- ◆ Press **Login**

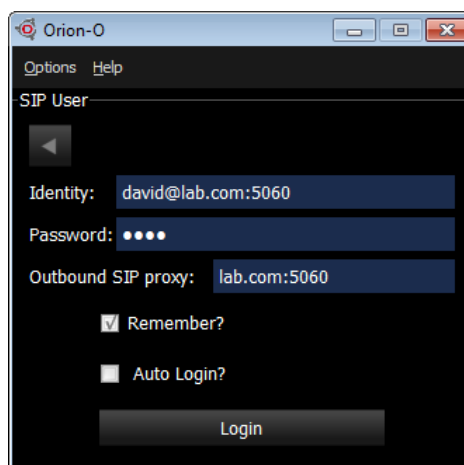


Figure 8: SIP User