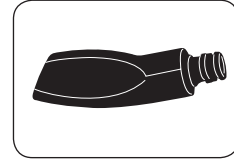
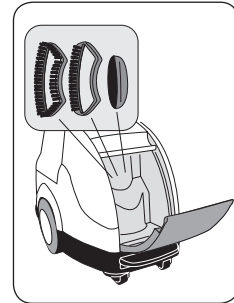


Steam Concentrator ZD 7300



The steam concentrator concentrates steam flow in one place, to remove sharp creases and/or tough wrinkles.

Accessory storage



Store accessories in the integrated accessory storage compartment as shown in photo. (included accessories depends upon model)

After use

- After using the steamer, switch the power switch to the off position (power indicator light will go out) and unplug the appliance. Empty water tank when not in use. Some water may accumulate and remain in base. This is normal.
- Hang steam head in an upright position in hanger head when not in use. Loop cord loosely around integrated cord storage bar.
- Carry the steamer by integrated carry handle and not by the water tank handle. You can also roll unit to storage area or carry from underneath the main unit.



Warning: Never touch the steam head until it cools completely.

Cleaning

Remove water tank and clean the main unit with a damp cloth. To maintain maximum performance, your steamer must be descaled occasionally. The descaling intervals will depend on the water quality and the frequency of use. The unit should be descaled at least once a year or every 100 hours of use.

For descaling, proceed as follows:

1. Unplug the unit and remove water tank from main unit by pulling up.
2. Fill the tank with fresh water and shake vigorously to remove any scale. Pour out the water and repeat if necessary.
3. Purchase a quality decalcifier agent and follow the instructions of the manufacturer for the proper ratio of the mixture to water and use.
4. After filling the water tank turn it up and down to descale.
5. Attach reservoir to unit, plug in and switch on
6. Let the appliance run until the water tank is almost empty. Do not steam any clothing with this mixture.
7. Unplug and detach the water tank. Rinse it with fresh water.
8. Fill water tank with fresh water and repeat steps 5 and 6.

Note: If after descaling you believe that there is still buildup in the boiler, repeat steps 1–8.

In the interest of improving products, Rowenta reserves the right to change specifications without prior notice.

LIMITED COMMERCIAL WARRANTY

Rowenta commercial products are warranted against defects in material and workmanship for 6 months from the initial date of purchase. During this period, any Rowenta product owned by the original purchaser that, upon inspection by Rowenta, is proved defective, will be repaired or replaced, at Rowenta's option, without charge to the owner. If a replacement product is sent, it will carry the remaining warranty of the original product. This warranty does not apply to any defect arising from a buyer's or user's misuse of the product, willful damage to the product, negligence, failure to follow Rowenta's instructions, use on current or voltage other than that stamped on the product, normal wear and tear, or alteration or repair not authorized by Rowenta. Repair or disassembly by anyone other than a Rowenta authorized service center will void the warranty.

THE WARRANTIES SET FORTH HEREIN ARE EXCLUSIVE AND NO OTHER WARRANTIES, EXPRESS OR IMPLIED, INCLUDING, WITHOUT LIMITATION, ANY WARRANTY OF MERCHANTABILITY OR FITNESS FOR A PARTICULAR PURPOSE OR USE ARE MADE BY ROWENTA OR ARE AUTHORIZED TO BE MADE WITH RESPECT TO ITS PRODUCTS. ROWENTA'S SOLE OBLIGATION IN THE EVENT OF A DEFECTIVE PRODUCT SHALL BE TO REPAIR OR REPLACE, IN ROWENTA'S SOLE DISCRETION, THE DEFECTIVE PRODUCT. IN NO EVENT SHALL ROWENTA BE LIABLE FOR ANY INDIRECT, SPECIAL, INCIDENTAL OR CONSEQUENTIAL LOSSES OR DAMAGES (INCLUDING BUT NOT LIMITED TO INTERRUPTION OF BUSINESS OR LOSS OF BUSINESS OR PROFIT) RESULTING FROM THE USE OF OR INABILITY TO USE THE PRODUCT, ANY BREACH OF WARRANTY OR ANY DEFECT IN THE PRODUCT EVEN IF ROWENTA SHALL HAVE BEEN ADVISED OF THE POSSIBILITY OF SUCH POTENTIAL LOSSES OR DAMAGES.

All purchases of Rowenta products shall be governed by and interpreted under the laws of the State of Massachusetts, U.S.A., excluding (i) its choice of law rules and (ii) the United Nations Convention on the International Sale of Goods. The federal or state courts located in Middlesex County, Massachusetts, shall have exclusive jurisdiction over all claims or actions arising out of or related to this limited warranty or the purchase of Rowenta products. If you believe your product is defective, bring the product (or send it, postage prepaid) along with proof of purchase to the nearest authorized Rowenta Service Center (see below). If you send the product, please include a letter explaining the nature of the claimed defect.

Rowenta Inc.
196 Boston Avenue
Medford, MA 02155 U.S.A.
Tel: (781) 396-0600
www.rowentausa.com

ABOVE ADDRESS IS AN OFFICE LOCATION ONLY

If your appliance needs service, ship the product to your nearest regional service center. Be sure to put your name on the outside of the shipping box (no P.O. boxes please). If in warranty, Rowenta will repair or replace the product at their discretion. If the product is out of warranty, you will be advised of the cost of repair before any work begins.

Our main service centers are listed below:

Turnpike Appliance
3495A Lawson Blvd.
Oceanside, NY 11572
516-483-5596

Authorized Appliance
1644 West Ogden Ave.
Downers Grove, IL 60515
630-852-1550

Service center information is subject to change.

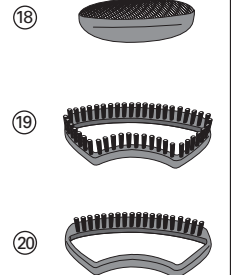
Please visit our website at: www.rowentausa.com or call our **service center information line** at: 781-306-4620 for current information and listings in California.

ROWENTA

IS8100 Instructions for Use



Accessories (depending on model)



Appliance description

- | | |
|---------------------------------|---------------------------|
| 1 Steam head | 11 Support rod |
| 2 Steamer handle with connector | 12 Water tank handle |
| 3 Hose | 13 Base unit carry handle |
| 4 Hose connector | 14 Water tank |
| 5 Base unit connector | 15 Cord storage |
| 6 Base unit | 16 Power cord |
| 7 Tool compartment | 17 Wheels |
| 8 Power indicator | 18 Lint brush |
| 9 Power switch | 19 Upholstery brush |
| 10 Hanger head | 20 Fabric brush |

IMPORTANT SAFETY INSTRUCTIONS

When using your appliance, basic precautions should always be followed, including the following:

Read all instructions before use.

1. Use appliance for its intended use only.
2. Children should not use this appliance. Close supervision is necessary when any appliance is used near children. Do not leave appliance unattended while connected to a power source.
3. Do not operate any appliance with a damaged cord, plug or steam hose or after the appliance malfunctions, or is dropped or damaged in any manner. To reduce the risk of electric shock, do not disassemble or attempt to repair the appliance. Return appliance to nearest authorized service center for examination, repair or adjustment.
4. To reduce the risk of contact with hot water emitting from steam vents, check appliance before each use by holding it away from body and operating.
5. Steam only in an up and down vertical motion. Never use steamer in a horizontal position or tilt into a backward position, this may result in water discharge.
6. To reduce the risk of electric shock, do not immerse the appliance in water or other liquids.
7. Appliance should always be turned off before unplugging. Never yank cord to disconnect from outlet, instead grasp plug and pull to disconnect.
8. Do not allow cord to touch hot surfaces. Let appliance cool completely before putting away. Loop cord loosely around integrated cord storage bar before storing.
9. Do not let power cord contact sharp edges or hot surfaces.
10. Do not remove the hose during operation. Scalding may occur if the hose adapter is removed.
11. Always disconnect appliance from electrical outlet when filling with water, emptying or when not in use.
12. Do not attempt to hang up the unit using the hose.
13. The use of accessory attachments not recommended by Rowenta may result in fire, electric shock or personal injury.
14. Burns could occur from touching hot parts, hot water or steam. Use care when you empty a steam appliance. There may be hot water in the reservoir.
15. Indoor use only.

SPECIAL INSTRUCTIONS

1. This is a 1500 watt appliance. To avoid a circuit overload, do not operate a high wattage appliance on the same circuit.
2. If an extension cord is absolutely necessary, the marked electrical rating should be at least as great as the electrical rating of the appliance. Cords rated for less amperage may overheat. Care should be taken to arrange the cord so that it cannot be pulled or tripped over.
3. Do not cut or attempt to extend the steaming hose.

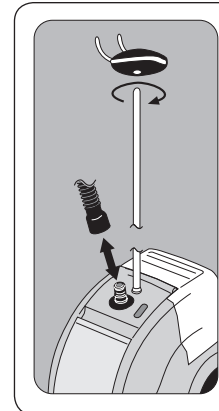
SAVE THESE INSTRUCTIONS

Tips

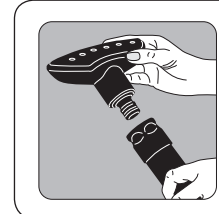
Thank you for purchasing the Rowenta Commercial Garment Steamer. Vertical Steamers are designed to refresh garments after hanging or folding, and to remove wrinkles from items that are delicate or difficult to iron. Steamers are not intended to replace an iron. To view the full range of Rowenta steam irons, visit www.rowentausa.com. Here are some helpful tips to consider before using your new steamer.

- Check the fabrics label for recommendations on care.
- Test fabric for color fastness on an unobtrusive part of the garment (inner seam) before steaming.
- Do not touch silk or velvet with steam head.
- Some articles can be steamed better from the underside.
- If steaming in a low position near floor, straighten hose up an out frequently to keep clear condensation. If hose becomes clogged, it will make a gurgling noise.
- Heavier fabrics may require repeated steaming.
- Exercise caution at all times.

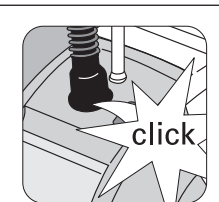
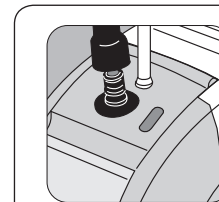
Before use



- Please read the instructions for use and Important Safeguards carefully.
- Remove any packaging from the appliance.
- Do not plug in or turn on until assembly is complete.
- Assemble the support rod by screwing the individual pieces together.
- Insert support rod in the hole on top of the main unit and screw it in a clockwise direction by hand until it is firmly in place.
- Attach the hanger head to the rod and secure by pressing down until it clicks in place. A rubber mallet may be used to gently tap top of hanger head until it locks. The hanger head will still rotate, for convenience, even when in place.



- Attach the steam head to the hose by placing it inside the handle connector. Secure by pressing down until it clicks into place.



- Attach the hose to the base unit by placing the hose connector over the base connector. Secure by pressing down until it clicks into place.

Disconnection of hose and steam head

- To disconnect the steam head, firmly grasp the handle connector at indentations. Gently pull down on the handle connector until the steam head releases.
- To disconnect the hose from the base unit, firmly grasp the hose connector at indentations. Gently pull up on hose connector until hose releases.

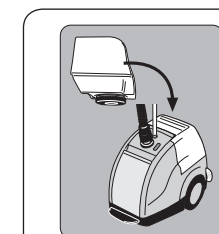
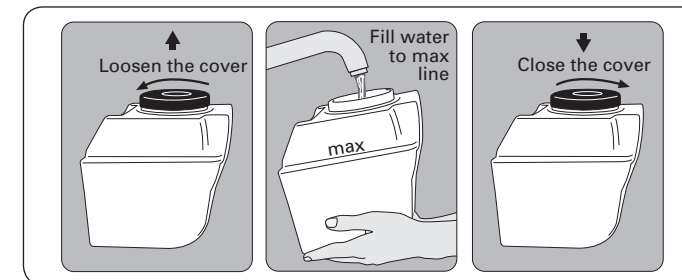
Auto off

The Auto-off function prevents unit from overheating, but does not switch-off the appliance.

Do not use as on/off switch.

Filling with water

- The steamer can be used with REGULAR TAP WATER (up to 12 grains of hardness). If your water is harder than this, Rowenta recommends mixing half tap water with half distilled water which reduces the hardness; or just use inexpensive bottled spring water; or 100% distilled water.
- Battery water and water containing additives (such as starch, perfume or fabric conditioner) may not be used in the steamer. Such additives can affect the properties of the steam and can form deposits.



- Be sure that unit is unplugged. Remove water tank from main unit by pulling up. Unscrew the cover and fill. Do not fill above the max line at the water tank. Water tank capacity is 1 gallon.
- Screw cover back onto tank when filled.
- Firmly place tank back on the main unit.

Use

Warning: Never steam clothes while they are being worn. Hose and steam head will become hot during use. This is normal. Use caution and avoid prolonged contact.

- Place steamer on a flat, level surface. Do not block vents on bottom of unit.
- Plug in cord and activate the power switch by hand or foot. The power indicator light will illuminate once steamer is turned on.
- Wait for the steam to come out. It will take approximately 90 seconds.
- Put garment onto the hanger head. Grasp the steam head with the steam vents pointing away from you. Start steaming by touching material lightly with steaming head and moving in an up/down vertical motion. Begin at the bottom of the garment and move in an upward direction. Steam with hose in an upright position. If steaming in a low position near floor, straighten hose up and out FREQUENTLY to keep clear of condensation. This allows any condensation to flow back into the steamer.
- During operation, the steamer hose may make a gurgling noise. This is a normal result of condensation. If it begins to gurgle, extend hose up and out to move excess moisture back into the base.

DO NOT ALLOW STEAMER TO RUN DRY

Accessories (depending on model)

Rowenta offers various accessories to add versatility to your garment steamer. Depending on the model, some of these accessories may be included in your product.

Reminder: When using accessories steam only in an up and down vertical motion. Never use steamer in a horizontal position and never tilt it in a backward position.

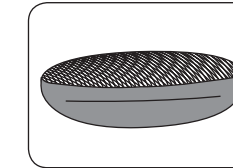
Before using any of the accessories on upholstery or garments, be sure to consult the manufacturer regarding their recommendations. We also recommend testing on an unobtrusive area.

If you are interested in purchasing additional accessories, please visit our website at www.rowentausa.com. You can also call one of our main service centers.



Be sure unit is unplugged and completely cool before attaching accessories.

Lint Pad

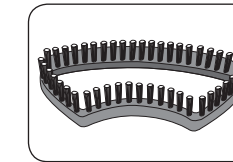


The lint pad removes hair, lint and animal fur for a professional finish.

- To use the lint pad, slowly brush the clothing with the grain or nap of the fabric.
- The lint pad can be cleaned by brushing in the opposite direction. We recommend cleaning on an old cloth that can be discarded.

Note: The lint pad does not attach to the steamer.

Upholstery Brush



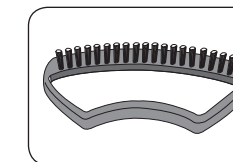
The upholstery brush is used to aid steam penetration into difficult, heavy fabrics for faster results.

- Be sure unit is unplugged and completely cool before attaching accessories.
- Attach the upholstery brush to the steam head by lining up the bottom of the brush with the bottom of the steam

head. Gently push the top of the brush into place on the steam head until it clicks into place.

- Gently brush the area to be steamed with the grain or nap of the fabric.
- **Remove the upholstery brush once unit is unplugged and completely cool.** Remove it by pressing on the release button on top of brush while pulling it forward.

Fabric Brush



The fabric brush opens the weave of the fabric for better steam penetration.

- Be sure unit is unplugged and completely cool before attaching accessories.
- Attach the fabric brush to the steam head by lining up the bottom of the brush with the bottom of the steam head. Gently

push the top of the brush into place on the steam head until it clicks into place.

- Gently brush the area to be steamed with the grain or nap of the fabric.
- **Remove the fabric brush once unit is unplugged and completely cool.** Remove it by pressing on the release button on top of the brush while pulling it forward.