

LEATT[®] BRACE



ADVENTURE[™]
LEATT

USER MANUAL
www.leatt-brace.com

⚠ WARNING

Motor Sports and racing can be dangerous. Participation in these activities can result in severe brain, head and neck injuries which may result in paralysis or death. Although the Leatt-Brace® is designed to help reduce the risk of such injuries, there is no guarantee that any injury will be prevented by the use of this or any other safety equipment. Read all instructions prior to use. Before putting on your Leatt-Brace® each time, please review and comply with the following cautions and instructions below.

- ⚠ The Leatt-Brace® cannot protect against all possible impacts and/or injuries. Although the Leatt-Brace® is designed to help reduce the risk of such injuries, there is no guarantee that any injury will be prevented by the use of this equipment. Perform any motor sport activity with caution and use/wear appropriate safety equipment.
- ⚠ For maximum performance, the Leatt-Brace® must be properly fitted and attached according to the instructions in the user manual. It is recommended that this product be used only in conjunction with a full-face helmet. Use at your own risk.
- ⚠ For maximum performance, the Leatt-Brace® must be inspected prior to each use. **STOP** using the Leatt-Brace® if any components show signs of damage or are worn, cracked, and/or deformed, or if the inside padding is deteriorated. **Leatt® Corporation recommends that the Leatt-Brace® be replaced every two 2 years under normal racing conditions.**
- ⚠ Should you experience a collision or if the Leatt-Brace® or any component shows any signs of damage, cracking, deformity and/or the inside padding is deteriorating, return the Leatt-Brace® to the seller for inspection or destroy and replace the Leatt-Brace®.
- ⚠ Common substances applied to this brace (solvent, cleaners, hair tonics, etc.) can cause damage that may be invisible to the user and compromise the effectiveness/safety of the Leatt-Brace®. Wash only with gentle soap or detergent in cold water, rinse in cold water and dry with a soft cloth.
- ⚠ Do not drill holes, paint, cut, heat, bend, apply decals or stickers, or make any other modifications to the Leatt-Brace® unless authorized in advance by the Seller. Doing so may compromise the effectiveness/safety of the Leatt-Brace®.
- ⚠ The brace has been tested using various static and dynamic tests, but has not been tested on riders under race conditions for instrumented impact assessment; this product is of a new design.
- ⚠ The brace has been tested on a wide range of users and vehicle types and should fit you and your vehicle, if not, minor adjustments may be required for proper fit. Failure to properly adjust the brace before use may compromise rider safety and brace effectiveness.
- ⚠ Always attach your helmet correctly according to seller's guidelines. Ensure that all of your safety equipment has not passed beyond its recommended life span. Travel/race with safety as your primary principle.

If you have any questions regarding this product or its proper use, please contact Leatt® Corporation at:

Leatt® Corporation South Africa
Unit 1, Kyalami Plaza, Kyalami Drive, Killarney Gardens, Cape Town, 7441, RSA
Tel: 0027 21 556 5409; Fax: 0027 21 557 3925

Leatt® Corporation USA
5348 Vegas Drive, #775, Las Vegas, Nevada 89108 USA
Tel: 702 447 6751; Fax: 702 447 6751
Email: info@leatt-brace.com

Copyright © 2008, Leatt® Corporation

WARRANTY DISCLAIMER

NO EXPRESS WARRANTIES WITH RESPECT TO THE BRACE OTHER THAN THOSE EXPRESSLY SET FORTH HEREIN HAVE BEEN PROVIDED.

LEATT® CORPORATION UNDERTAKES NO RESPONSIBILITY FOR THE QUALITY OF THE GOODS EXCEPT AS OTHERWISE PROVIDED HEREIN. LEATT® CORPORATION TAKES NO RESPONSIBILITY THAT THE GOODS WILL BE FIT FOR ANY PARTICULAR PURPOSE FOR WHICH YOU MAY BE BUYING THE GOODS, EXCEPT AS OTHERWISE PROVIDED HEREIN. ALL IMPLIED WARRANTIES ARE HEREBY DISCLAIMED INCLUDING THE IMPLIED WARRANTIES OF MERCHANTABILITY AND OF FITNESS FOR A PARTICULAR PURPOSE.

'the helmet for your neck'®

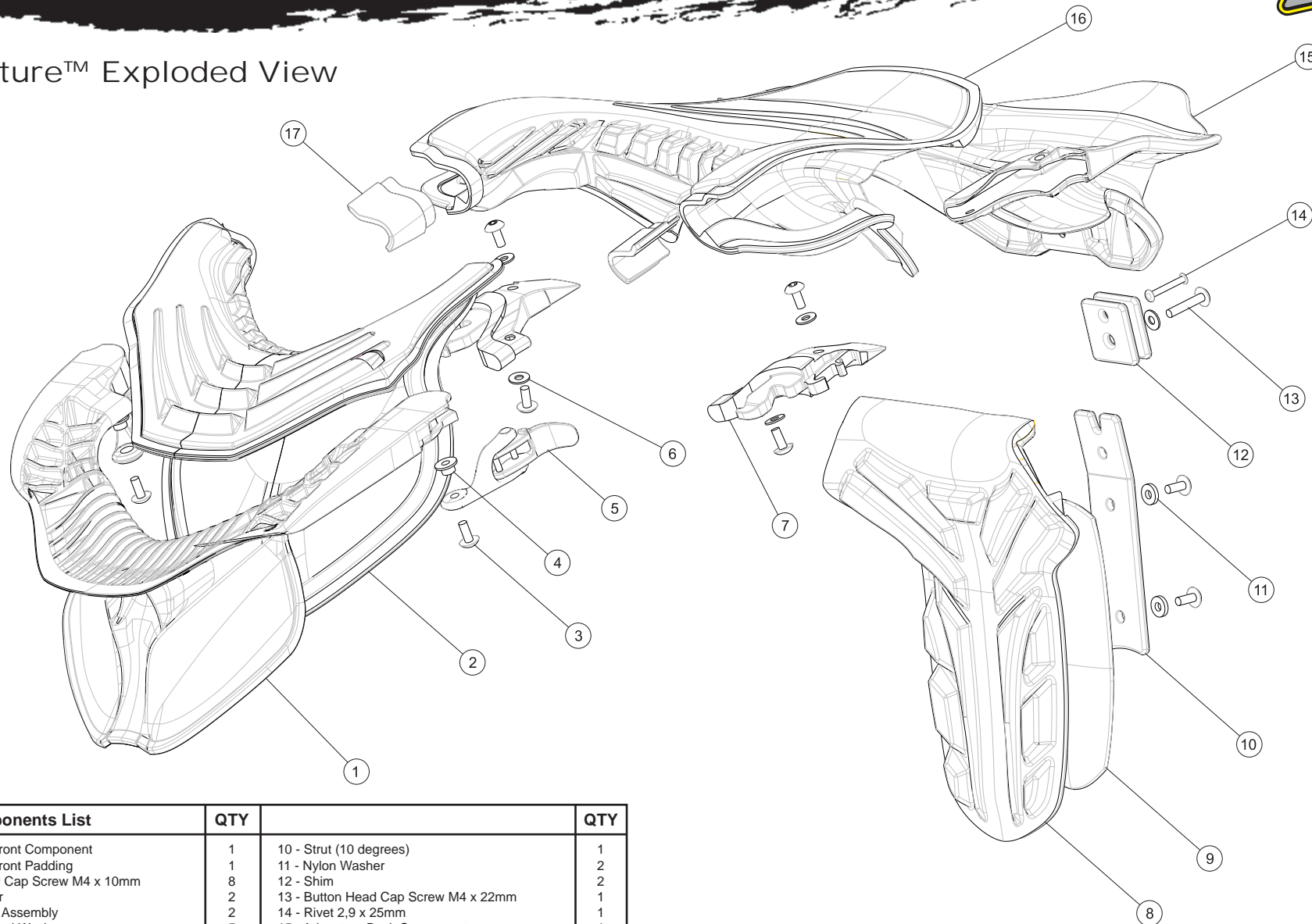


Leatt-Brace® ADventure™

Table of Contents

- ADventure™ Brace Exploded View Page 03 - 04
- Instruction Manual Introduction Page 05
- Brace Fitment
 - Fitment and Adjustment of Pins Page 06
 - Padding Inserts Page 07
 - Strut and Thoracic Assembly Page 08 - 09
 - Opening and Closing your Brace Page 09
 - Fitting the ADventure™ Brace with a Roost Guard Page 10
 - Fitting the ADventure™ Brace with a Riding Jacket Page 11
- Chest Strap Page 12
- Looking after your Leatt-Brace® Page 13
- Indemnity and Warranty Disclaimer Page 14

ADventure™ Exploded View



Parts/Components List	QTY		QTY
1 - Adventure Front Component	1	10 - Strut (10 degrees)	1
2 - Adventure Front Padding	1	11 - Nylon Washer	2
3 - Button Head Cap Screw M4 x 10mm	8	12 - Shim	2
4 - Step Washer	2	13 - Button Head Cap Screw M4 x 22mm	1
5 - Hinge Lever Assembly	2	14 - Rivet 2,9 x 25mm	1
6 - Stainless Steel Washer	5	15 - Adventure Back Component	1
7 - Pin	3 pairs	16 - Adventure Back Padding	1
8 - Adventure Thoracic Padding	1	17 - Adventure Padding Inserts	2
9 - Adventure Thoracic Component	1		

Instruction Manual Leatt-Brace® ADventure™

Welcome to the world of Leatt-Brace® and thank you for choosing our product. The Leatt-Brace® you have purchased is based on years of academic research, extensive evaluation of the mechanisms of head and neck injuries, together with testing, both in test facilities and with simulation software, and also in conjunction with top drivers and riders.

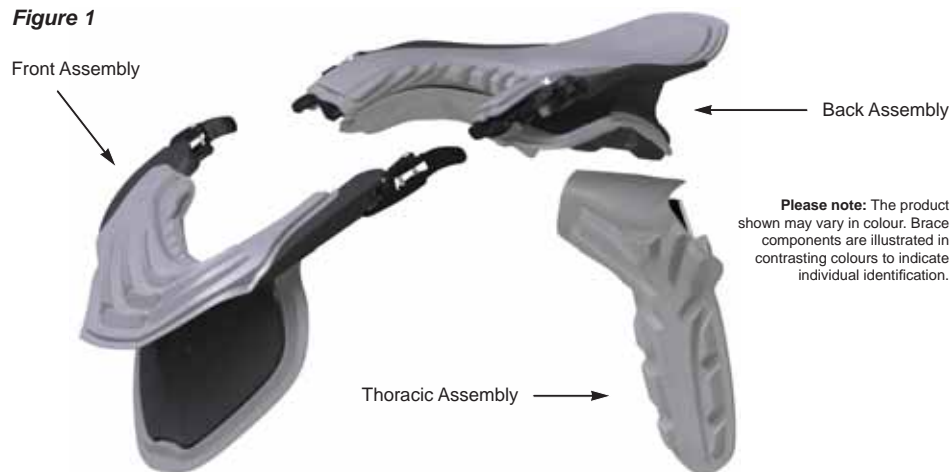
Our design philosophy has always been to produce an effective neck injury prevention device with practical appeal as determined by our test riders. We will therefore always appreciate your feedback with regards to comfort and practicality for your chosen application of our product.

Please e-mail any comments you might have to info@leatt-brace.com.

For fitment, please follow this easy fitment guide. The size of brace you have purchased should be correct for your body shape and allows for adjustability to ensure correct fitment and comfort no matter what your application is.

The Leatt® ADventure™ Brace (*Figure 1*) has been designed to be set up in stages to suit your requirements. Please follow the fitment process which should take you about 20 minutes to complete.

Figure 1



Step 1

Your ADventure™ brace is supplied with three pairs of different sized Pins for adjustment. The Medium Pin is fitted as standard. To begin with, fit your brace without the thoracic assembly on your shoulders and chest as shown below in *Figure 2*.

Figure 2

Change Pin size to short or long according to fit

Brace fitted without the thoracic assembly on the back assembly

Ensure comfortable fit to chest

Ensure comfortable fit to shoulders

Figure 3: Pin sizes



Adjustment with Pins

If the brace is too loose around your neck with the fitted Medium Pin and does not sit comfortably on your shoulders and chest, fit the Short Pin (see *Figure 3*). If the brace is too short and therefore too tight, simply fit the Long Pin.

Fitting the Pins

Unscrew the 2 Buttonhead Cap Screws (see *Figure 4a*) with the supplied Allen key. Slide the Pin out once the Cap Screws are removed (see *Figure 4b*) and replace by sliding the desired Pin back in the same way. Now screw in the 2 Buttonhead Cap Screws with its washers in place to secure the newly fitted Pin.

Figure 4a:

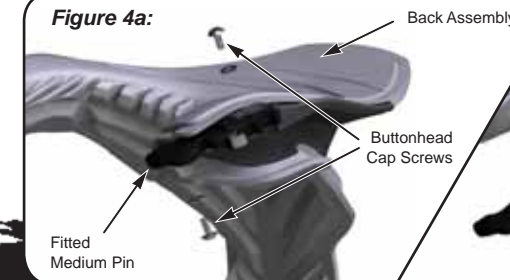
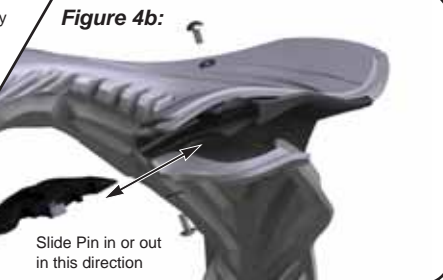


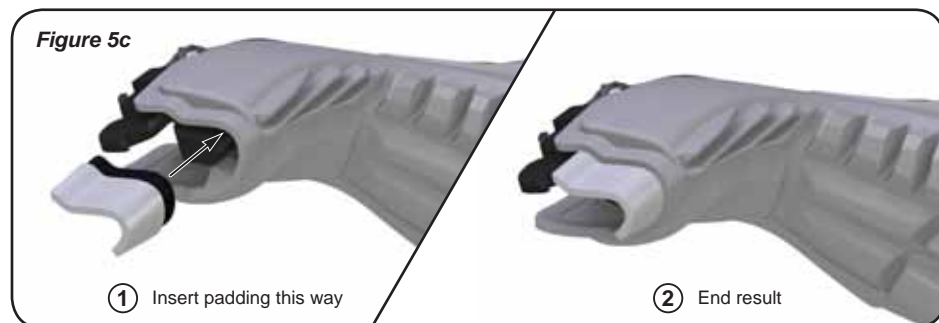
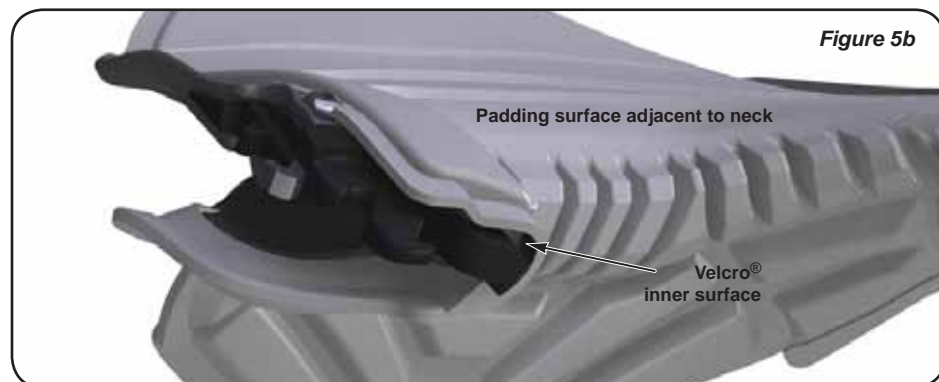
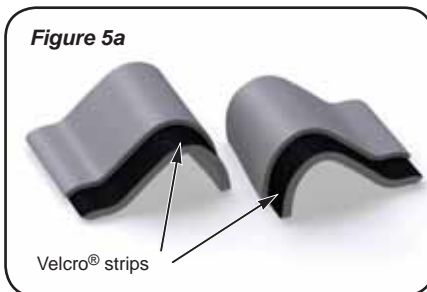
Figure 4b:



PADDING INSERTS

When the 10 and 20mm Pins are used, fit the supplied Padding Inserts (Figure 5a) to cover the longer exposed Pins.

Padding Inserts and Padding join together with Velcro®. (Figure 5b & 5c)



STEP 2

Now attach the strut onto the thoracic assembly as shown in Figure 6. You have been supplied with a 10 degree strut and a 7 degree wedge.

We recommend that you start with the standard 10 degree strut (Figure 6a.) This is the most commonly fitted strut for average sized riders.

7 Degree Wedge

Slender riders can insert the 7 Degree Wedge upright between the thoracic assembly and the strut (Figure 6b).

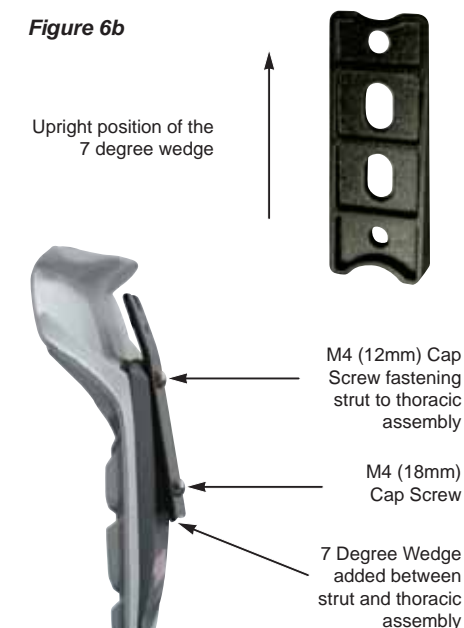
Larger riders can in turn invert the 7 degree wedge for a larger fit.



Figure 6a



Figure 6b



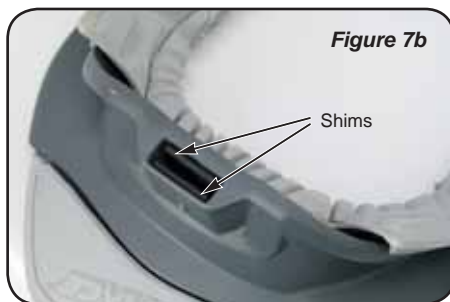
STEP 3

Insert the strut into the back assembly of the brace (*Figure 7a*), starting with one Shim on either side (*Figure 7b*) of the strut. The strut and Shim will always be contained within the brace so that you can adjust the brace at any time. There is no need to fit the Locking Cap Screw at this time.

Now refit the brace. If the brace is pulled slightly backward, place the two Shims (*Figure 7b*) before the strut (towards the front portion of the brace), if the brace has become too loose, place the two Shims behind the strut (towards the back portion of the brace). If the lowermost portion of the thoracic assembly is located away from your back, use the 7 Degree Wedge. (refer to *Figure 6b*). You may now secure the Locking Cap Screw (see *Figure 7a*) that fastens the thoracic assembly to the back assembly.

Opening and Closing the Leatt-Brace®

The Leatt-Brace® can be opened from the left or right (*Figure 8a*), or the front assembly can be completely removed (*Figure 8b*).



Fitting the ADventure™ Brace with a Roost Guard

When wearing a roost guard, the lower portion of the front assembly of the brace should be placed inside the roost guard and the upper portion of the front assembly should be outside the roost guard (*Figure 9a*). The same applies to the back upper and lower portions of the brace (*Figure 9b*).

If your roost guard is a smaller size, you may have to widen the head opening of the roost guard. Most roost guards allow for this adjustment. In the case of very small children, allow the front lower portion to rest on the outside of the roost guard. Some junior riders choose to remove the hard outer portion of the shoulder padding from their roost guards for comfort.



Figure 9a & 9b: Your ADventure™ Brace may be worn under or on top of Roost Guard as long as the thoracic assembly is under the back protector.

Fitting the ADventure™ Brace with a Riding Jacket

The ADventure™ Brace can be worn very comfortably and unobtrusively with a Riding Jacket. When wearing a Riding Jacket with the brace, ensure that the brace rests comfortably over your jacket (see Figure 10a & 10b).

The Riding Jacket will be difficult to close properly if an attempt is made to wear the ADventure™ Brace underneath the jacket.

Refer to Step 1 to adjust the fit and comfort of your brace on the chest and back.

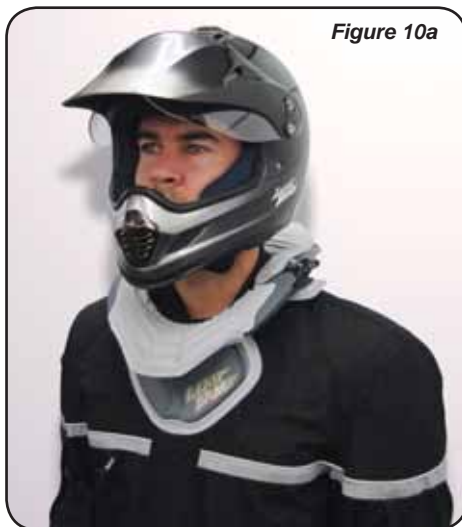


Figure 10a



Figure 10b

Figure 10a & 10b: Your ADventure™ Brace may be worn comfortably over your Riding Jacket.

CHEST STRAP

Once your Adventure™ Brace is set up correctly to your body size and shape, attach the chest strap (see Figure 11a). The chest strap can provide additional stability and comfort.

The back portion of the Chest Strap has controlled stretch and should be attached with the Velcro® on the thoracic assembly (Figure 11b). The front portion of the Chest Strap has no stretch and should be attached with the Velcro® on the underside of the lower portion of the front assembly (Figure 11c).



Figure 11a

Fastening clip with adjustable tension strap



Figure 11b



Figure 11c

Fasten the plastic clips on each side of the strap by clipping one into the other (Figure 11a & 11c).

You can tighten or loosen the excess tension strap for comfort and stability.



Figure 11d

LOOKING AFTER YOUR LEATT-BRACE®

You may want to wash your Leatt-Brace® after hard riding. The brace and integrated padding can be washed with a gentle soap or detergent in cold water, rinsed in cold water and dried with a cloth. Common substances applied to this brace [solvent, cleaners, hair tonics, etc.] can cause damage that may be invisible to the user and compromise the effectiveness/safety of the Leatt-Brace®.

For maximum performance the Leatt-Brace® must be inspected prior to each use. Stop using the Leatt-Brace® if any of its components, including but not limited to, the Front Component, Hinge Lever Assembly, Pins, Strut, Nylon Washers and/or the Back Component (See Parts/Components List on page 3) are worn, cracked and/or deformed, or if the inside padding is deteriorated.

We wish you many safe hours of enjoyable racing and riding with your Leatt-Brace®. Please do not hesitate in contacting us with any questions or comments at info@leatt-brace.com. We recommend that you replace your Leatt-Brace® every two years of normal use and replace any components that are damaged in a serious accident.



INDEMNITY

As a condition of purchase/receipt of the Leatt-Brace®, the user has fully read and understood the User Manual and understands that although the brace is designed to help reduce brain, head and neck injuries when worn in conjunction with a full-faced helmet, there is no guarantee that any injury will be prevented by the use of the brace. Each brace must be set up for the individual user and be of the correct size and fit.

As a condition of purchase and/or receipt of the Leatt-Brace®, the user has read and familiarized himself/herself with the technical aspects, research and test results relating to the Leatt-Brace® provided at Leatt® Corporation's website (www.leatt-brace.com) and understands the nature of the brace and its intended use and correct fitment.

As a condition of purchase and/or receipt of the Leatt-Brace®, the user understands and recognizes that the brace has not been tested on humans in race conditions for instrumented impact assessment and that this is a new design.

Should you not wish to accept the terms of this Indemnity, please return the Leatt-Brace®.

Always attach your helmet correctly according to manufacturer's guidelines, ensure all your safety equipment has not passed its recommended lifespan and travel/race with safety as an important principal.

As a condition of purchase and/or receipt of the Leatt-Brace®, the user waives any claims against Leatt® Corporation, the inventor, manufacturer, any subcontractor, agent or Global Distributor. Leatt® Corporation, the inventor, manufacturer, any subcontractor, agent of Global Distributor will under no circumstances be liable to any person for any damages, direct, indirect, bodily or otherwise including injury or death, that may be sustained by any person as a result of the use of the Leatt-Brace®, any alleged defect therein or its alleged failure to afford the protection offered by it or for any consequential loss of profits or damages suffered by any person, however such loss or damage may arise or for any other reason of from any other circumstances of whatsoever nature.

Leatt® Corporation (South Africa)
Unit 1, Kyalami Plaza, Kyalami Drive, Killarney Gardens, Cape Town, 7441, RSA
Tel.: 0027 21 556 5409; Facsimile: 0027 21 557 3925

Leatt® Corporation USA
5348 Vegas Drive, #775, Las Vegas, Nevada 89108 USA
Tel.: 702 447 6751; Facsimile: 702 447 6751
Email: info@leatt-brace.com

WARRANTY DISCLAIMER

NO EXPRESS WARRANTIES WITH RESPECT TO THE BRACE OTHER THAN THOSE EXPRESSLY SET FORTH HEREIN HAVE BEEN PROVIDED.

LEATT® CORPORATION UNDERTAKES NO RESPONSIBILITY FOR THE QUALITY OF THE GOODS EXCEPT AS OTHERWISE PROVIDED HEREIN. LEATT® CORPORATION TAKES NO RESPONSIBILITY THAT THE GOODS WILL BE FIT FOR ANY PARTICULAR PURPOSE FOR WHICH YOU MAY BE BUYING THE GOODS, EXCEPT AS OTHERWISE PROVIDED HEREIN. ALL IMPLIED WARRANTIES ARE HEREBY DISCLAIMED INCLUDING THE IMPLIED WARRANTIES OF MERCHANTABILITY AND OF FITNESS FOR A PARTICULAR PURPOSE.

LEATT® BRACE



CONTACT DETAILS

Leatt® Corporation, South African Branch
Unit 1, Kyalami Plaza, Kyalami Drive
Killarney Gardens, Cape Town, 7441, South Africa
Tel: +27 21 556 5409, Fax: +27 21 557 3925
Email: info@leatt-brace.com
Website: www.leatt-brace.com

Postal Address:
Suite 109, Private Bag X3
Bloubergrant, 7443, South Africa

Copyright © 2008, Leatt® Corporation