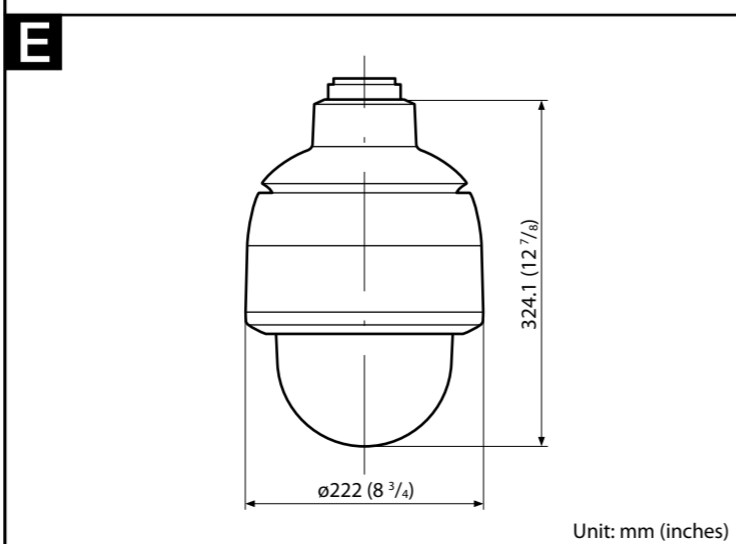
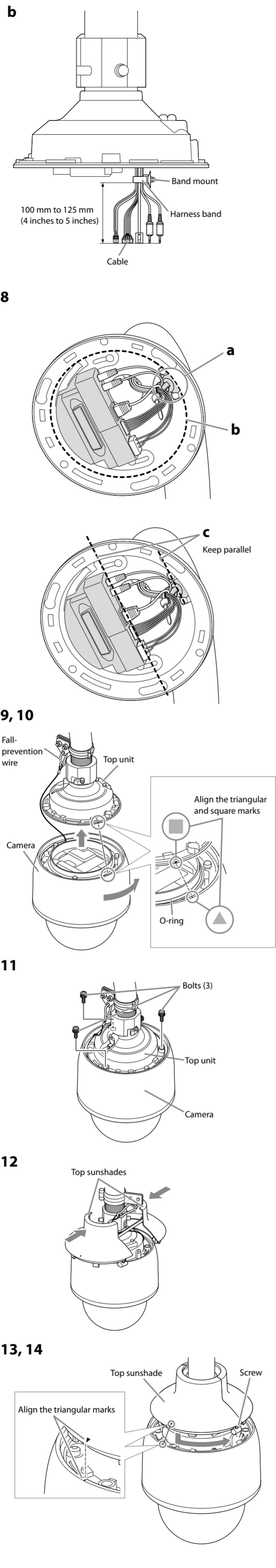
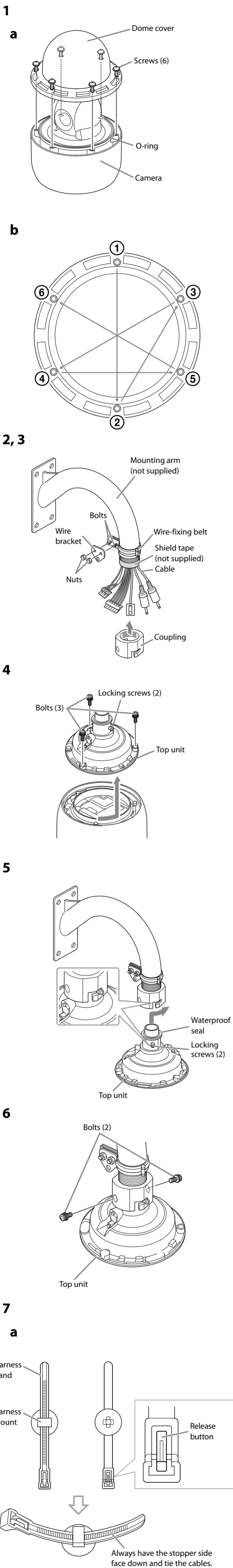




## D How to install the camera



## Installation

### Notes

- Do not allow water to come in contact with the power cable, connection cables or connectors, as it may cause water leakage into this device, and subsequent damage.
- The mounting arm (not supplied) to which the device is attached should have fixing screws of NPT 1 1/2" specified by a Sony dealer. Using an unspecified mounting arm may cause water leakage into this device, and subsequent damage. Be sure to use the specified mounting arm.
- The lens zoom and angle may result in a blurred or inclined image within the range above the horizon of the lens position.
- To prevent the dome cover from damage and stain, do not remove the protecting sheet from the dome cover until the setting is completed.

### Warning

- If installing the camera in high location, such as high wall, entrust the installation to a professional contractor or service personnel.
- The camera should be securely installed on a location strong enough to support the weight of the camera and the mounting arm. Otherwise, the camera and mounting arm may fall and cause serious injury.
- For the fall-prevention of the camera, make sure to use the wire rope.
- If the bolts are attached loosely or loosen, the camera and parts may fall. There may also be a risk of water leakage. Make sure to tighten the bolts and screws so that they will not loosen.
- Check the camera is attached securely, the screws, etc. are not loosened periodically, at the least once a year. Depending on the usage conditions, periodic inspections should be conducted more frequently.

### Note

Use the supplied screws to install the unit. Using other screws may cause damage inside the unit.

## How to Install

### Before installation

Referring to the installation manual of the mounting arm (not supplied), drill the required holes for the mounting screws and the connection cable. Then install the mount arm in advance. After that, wrap the screw part of the mounting arm in a shield tape (not supplied).

### How to install the camera

- Attach the dome cover to the camera. (a) Tighten the six screws in the specified order (1 to 6). (b)

### Notes

- Remove the drafting tape from the O-ring before attaching the dome cover.
  - Be sure to properly place the O-ring in the groove firmly before attaching the dome cover. If the O-ring is not properly and firmly placed, waterproof performance may be compromised.
  - The six screws should be tightened to 1.2 N-m.
- Attach the supplied wire-fixing belt and wire bracket to the mounting arm (not supplied). Then secure the wire-fixing belt and wire bracket to the mounting arm by tightening two nuts.

### Note

The two bolts should be tightened to 5.2 N-m.

- Screw the supplied coupling on the mounting arm.

### Note

If the coupling is attached loosely or loosens, the camera may fall. Securely put the coupling around the mounting arm so that it will not loosen.

- Remove the three bolts from the top part of the camera, and turn the top unit until it stops, then pull it upward to remove it from the camera. Have a 5 mm (1/2 inch) hex wrench ready to loosen the bolts.
- Attach the top unit to the mounting arm. Place the locking screws fixed to the top unit in the groove of the coupling and turn the top unit until it stops, in the direction of the arrow.

### Notes

- Remove the drafting tape from the waterproof seal before attaching the mounting arm.
- Be sure to verify that the locking screws are not loose. If the locking screws are loose, the camera may fall. The locking screws should be tightened to 5.2 N-m.
- Be sure to tighten the waterproof seal properly to the top unit before attaching; otherwise, waterproof performance may be compromised.

- Attach the two supplied bolts to the screw holes of the coupling and tighten them.

### Note

The two bolts should be tightened to 5.2 N-m.

- Run the supplied harness band through the band-mounting hole (a), tie the cables at 100 mm to 125 mm (4 inches to 5 inches) from the cable head (b). If the tied position is not appropriate, push the release button of the harness band to loosen, and tie the cables again.

- Secure the band mount to the harness holder (a), and connect the cables. Push the cables into the top unit (b). Be sure that all cable connection sides of the top unit are in parallel with the harness holder. (c)

- Hook the fall-prevention wire of the camera on the hole of the wire bracket.
- Align the triangular mark of the camera and square mark of the top unit and push the camera into the top unit. Then turn the camera until it stops, in the direction of the arrow.

### Notes

- Be sure to properly place the O-ring in the groove firmly before attaching the camera. If the O-ring is not properly and firmly placed, waterproof performance may be compromised.
- Be sure that the camera connection terminal of the top unit is in parallel with the harness holder before pushing the camera into the top unit.
- To prevent the cables from getting caught, push the slack part of the cables into the top unit before attaching the camera.

- Attach the camera to the top unit using the three bolts which were removed in step 4.

### Note

The three bolts should be tightened to 5.2 N-m.

- Separate the provided top sunshade and reattach the separated parts above the camera to return the top sunshade to its original form.

### Notes

- Run the fall-prevention wire through the top sunshade.
- Securely attach the top sunshade so that the snap hook will not get caught in it.

- Align the respective triangular marks of the camera and top sunshade and push the top sunshade into the camera. Then turn the sunshade until it stops, in the direction of the arrow.

- Secure the camera and top sunshade using the screw on the top sunshade.

### Notes

- Please make sure to attach the top sunshade. The top sunshade prevents the device from overheating in direct sunlight.
- The screw should be tightened to 1.2 N-m.

## Removing the camera

- Remove the one screw that secures the top sunshade to the camera in Step 14 of "How to install the camera" to remove the top sunshade.
- Remove the three bolts used in Step 11 of "How to install the camera."
- Turn the top unit to the position where the triangular mark of the camera and the square mark of the top unit align, and pull the camera out downwards.
- Remove the fall-prevention wire of the camera from the hole of the wire bracket.

## Connection

### Connecting to the Network

Connect the LAN port of the camera unit to a router or hub in the network using the network cable (not supplied).

### Connecting the Power Source

The following method is available for connecting to a power source.

- 24 V AC

### Connecting to a 24 V AC power source supply

Connect the 24 V AC power supply system to the power input terminal of the camera. The AC power cable is not supplied.

- Use a 24 V AC power source isolated commercial power supply.
- The usable voltage range is as follows: 24 V AC: 21.6 to 26.4 V
- Use a UL cable (VW-1 style 10368) for 24 V AC connection.

### Note

Always connect pin 2 (center) to the ground terminal.

### Recommended power cable

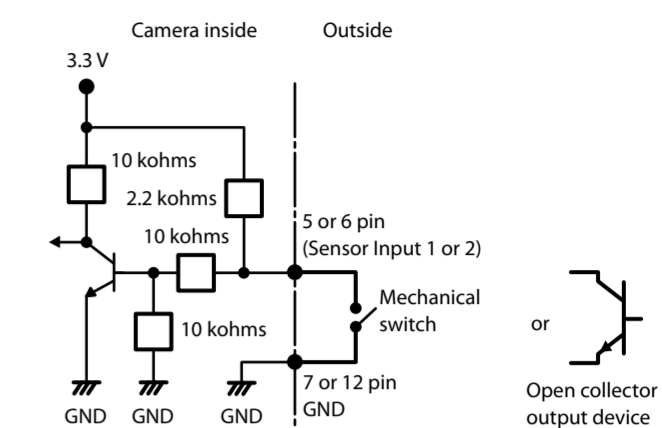
#### 24 V AC

Cable(AWG)	#22	#20	#18	#16
Maximum cable length (m (feet))	5 (16.4)	8 (26.2)	15 (49.2)	21 (68.9)

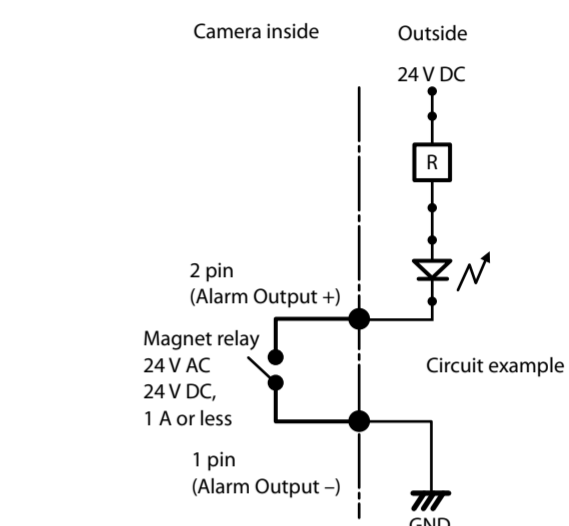
### Connecting the I/O Cable

#### Wiring diagram for sensor input

#### Mechanical switch/open collector output device



#### Wiring diagram for alarm output



## Specifications

### Compression

Video compression format JPEG/MPEG4/H.264  
Audio compression format G.711/G.726 (40,32,24,16 kbps)  
Maximum frame rate 30 fps

### Camera

Image device 1/2.8 type Exmor CMOS  
Synchronising Internal  
Minimum illumination 1.7 lx (Shutter speed: 1/30 sec, Exposure: Full auto, 50IRE (IP))  
50 dB (Gain 0 dB)

### Video S/N

Focus length f=4.3 mm to 129.0 mm  
Maximum relative aperture F1.6 to F4.7  
Minimum object distance 300 mm

### Lens

Mechanism Pan 360°, endless rotation  
Maximum speed: 300°/s  
Tilt 210° (with auto invert function)  
Maximum speed: 300°/s

### Interface

LAN 10BASE-T/100BASE-TX, auto negotiation (RJ-45)  
Sensor input: x 2, make contact  
Alarm output: x 1, 24 V AC/DC, 1 A (mechanical relay outputs electrically isolated from the camera)

### SD memory card slot

Microphone input Minijack (monaural)  
Plug-in-power supported (rated voltage: 2.5 V DC)  
Recommended load impedance 2.2 kohms  
Line output Minijack (monaural), Maximum output level: 1 Vrms

### Others

Power supply 24 V AC ± 10%, 50 Hz/60 Hz  
Power consumption SNC-ER585 Max. 76 W  
SNC-ER585H Max. 26 W  
Operating temperature SNC-ER585 -40 °C to +60 °C (-40 °F to 140 °F)  
SNC-ER585H -40 °C to +60 °C (-40 °F to 140 °F)  
Activation temperature range: -40 °C to +60 °C (-40 °F to 140 °F)  
SNC-ER585H Maximum temperature range: -5 °C to +65 °C (23 °F to 149 °F) (2 hours use)  
Continuous use temperature range: -5 °C to +60 °C (23 °F to 140 °F)  
Activation temperature range: 0 °C to +65 °C (32 °F to 149 °F)  
Storage temperature -20 °C to +60 °C (-4 °F to +140 °F)  
Operating humidity 20% to 80%  
Storage humidity 20% to 95%

Dimensions (Diameter/Height) ø222 mm × 324.1 mm (ø8 3/4 inches × 12 7/8 inches) (Not including the projecting parts)

### Mass

Supplied accessories Approx. 4.3 kg (9 lb 8 oz)  
Dome cover (1)  
Top sunshade (1)  
Coupling (1)  
Wire-fixing belt (1)  
Wire bracket (1)  
Bolts (2)  
Power supply connector 3-pin (1)  
I/O harness 14-pin (1)  
Harness band (1)  
Band mount (1)  
Installation manual (1 set)  
CD-ROM (User's Guide, supplied programs) (1)

Design and specifications are subject to change without notice.

### Recommendation of Periodic Inspections

In case using this device over an extended period of time, please have it inspected periodically for safe use. It may appear flawless, but the components may have deteriorated over time, which may cause a malfunction or accident. For details, please consult the store of purchase or an authorized Sony dealer.