

# PBS Data Dictionary™, AcuODBC® and AcuODBC® Server

## Installation and Configuration Guide

Passport Business Solutions™

Version 11.x

August 2007





PBS Data Dictionary, AcuODBC<sup>®</sup>  
and AcuODBC<sup>®</sup> Server  
Installation and Configuration Guide  
for Passport Business Solutions

Passport Software, Inc.  
3801 West Lake Avenue, Suite 301  
Glenview, IL 60026  
(847) 729-7900  
<http://www.pass-port.com/>

PROPRIETARY RIGHTS NOTICE: No part of this material may be reproduced or transmitted in any form or by any means, electronic, mechanical, or otherwise, including photocopying and recording or in connection with any information storage or retrieval system, without the permission in writing from Passport Software, Inc.

Passport Software, Inc ("PSI") has taken reasonable preventive measures to ensure the accuracy of the information contained in this manual. However, PSI makes no warranties or representations with respect to the information contained herein; and shall not be liable for damages resulting from any errors or omissions herein or from the use of the information contained in this manual.

**Trademark Acknowledgements**

Portions copyright © 1988 – 2007 Acucorp, Inc. All rights reserved. ACU COBOL and AcuODBC are trademarks of Acucorp, Inc. Passport Business Solutions and the PBS Manufacturing Series are trademarks of Passport Software, Inc.

The enclosed PBS Manufacturing Series documentation:

Copyright, Passport Software, Inc. ©2007. All rights reserved. The additional names of companies and products may be the intellectual property of their respective owners.

# Table of Contents

- 1. Introduction .....2**
  - Product Description .....2
  - AcuODBC* .....2
  - PBS Data Dictionary XFD Files and Multi-Company Utility*.....2
  - AcuODBC Requirements.....2
  - Supported Modules and Files.....3
    - Financial and Distribution Files*.....3
    - Manufacturing Files*.....8
- 2. Concepts and Terms.....12**
- 3. AcuODBC and PBS Data Dictionary Installations.....14**
  - Installing AcuODBC.....14
  - Installing the PBS Data Dictionary for Windows (PBS Data Dictionary CD ROM) .....15
  - Installing the Data Dictionary for Multi-Companies .....16
- 4. AcuODBC Product Configuration.....20**
  - Setup Example .....20
- 5. Server/Client Installation and Configuration .....27**
  - AcuODBC® Server for Windows .....27
    - Pre-Installation Information* .....27
    - Step 1: Install AcuODBC Server for Windows*.....27
    - Step 2: AcuAccess file installation* .....28
    - Step 3: Configure your DSN* .....29
    - Step 4: Start the Service* .....30
    - Step 5: Configure the Data Source* .....32
    - Step 6. Install and Configure the AcuODBC Client for Windows*.....33
    - Security Considerations* .....33
  - AcuODBC for UNIX/Linux Server Installation and Configuration .....36
    - Pre-Installation Information* .....36
    - Install the Acucorp ODBC Server software* .....36
    - Install the PBS ODBC Scripts*.....39
    - Configure the Acucorp ODBC Server Software*.....39
    - Install the PBS Data Dictionary XFD files for UNIX or Linux*.....40
    - Create a DSN on the UNIX/Linux Server*.....40
    - Start the ODBC Server*.....42
  - Configure the AcuODBC Client for a Connection to the Server .....42
  - Test the AcuODBC Server/Client Installation .....44
    - Where to go from here?*.....45
- Appendix .....46**
  - 1. Data Security and Limiting Access to PBS Data .....46
  - 2. Support.....47
  - 3. ODBC Performance .....48

# 1. Introduction

The *AcuCorp® extend® 6 AcuODBC® Data Interface for Windows®* provides you with direct access to Passport Business Solutions information stored in AcuCOBOL Vision and Relative data files. The *AcuODBC Data Interface for Windows* presents your Passport Business Solutions accounting information to you for use with ODBC-enabled applications using the Microsoft's Open DataBase Connectivity standard.

## Product Description

The single user version of the ODBC product for Passport Business Solutions consists of two components; the Acucorp extend 6 AcuODBC Data Interface for Windows and the PBS Data Dictionary XFD files. Chapters 3 and 4 cover this installation and configuration.

**NOTE:** Each of these products is installed separately.

### AcuODBC

Acucorp's *extend 6 AcuODBC Data Interface for Windows* is the conduit between your Passport Business Solutions data and ODBC-enabled applications such as Microsoft Office applications. AcuODBC gives ODBC-enabled applications access to your Passport Business Solutions data files. The AcuODBC driver is used to create the data source that you will use in real-time to access your Passport Business Solutions data.

### PBS Data Dictionary XFD Files and Multi-Company Utility

Passport Software, Inc. has created PBS data dictionary XFD files that are used in conjunction with AcuODBC to complete access to your Passport Business Solutions data. These dictionary files are specific to the format of your Passport Business Solutions data files and allow AcuODBC to properly organize the data within these files for ODBC-enabled applications.

The multi-company utility allows you to create a data dictionary for any additional companies that you have in Passport Business Solutions. This is installed as a standard part of the PBS product.

## AcuODBC Requirements

In order to interface your Passport Business Solutions data with a Windows application through AcuODBC, you must be able to provide the following environment for Acucorp *extend® 6 AcuODBC Data Interface for Windows*.

- Microsoft Windows 98 SE, Windows NT, Windows 2000, Windows XP, Windows Vista for the single user or client installation.
- For a server installation the Windows operating system required is either Windows 2000 or Windows 2003. A server installation is only needed if you are installing AcuODBC Server. A server installation will provide a more robust access to PBS data, especially for multi-file access.
- The operating systems for Linux should be GLIBC 2.2 or 2.3. For UNIX the operating systems supported are either Version 5.06, 5.07 or 6.0.
- ODBC Data Source Administrator Version 3.5 or later. (This is part of your Windows operating system. If you have an earlier version installed, the Administrator will be updated when you install AcuODBC.)
- ODBC Driver Manager Version 2.0 or later. (Provided by most ODBC-enabled applications. If you have an earlier version installed, the Administrator will be updated when you install AcuODBC.)

## Supported Modules and Files

The PBS Data Dictionary provides access for the Passport Business Solutions modules listed below. We have provided access to the most relevant files within Passport Business Solutions. Each Passport Business Solutions file can be identified as a table within an ODBC-enabled application by its filename preceded by an application identifier such as AP for Accounts Payable or GL for General Ledger. For example, the Passport Business Solutions Accounts Receivable Customer File will be listed as a table called "ar\_cusfil".

### Financial and Distribution Files

The following is a list of the PBS Financial and Distribution Series modules, table identifiers for the module, and the files you can access via the PBS Data Dictionary files. Additional information about most of these files can be found in the Passport Business Solutions user manual for each module in the appendix titled *Initializing Data Files* and in the *AcuODBC Field Definition Guide* for Passport Business Solutions files.

#### Accounts Payable (AP)

File name	Dictionary file name
Accounts Payable Account File	ap_apacct00.xfd
A/P Check File	ap_apchkf00.xfd
Distribution to G/L File	ap_apdist00.xfd
Open Item File	ap_apopen00.xfd
Vendor Contacts File	ap_pcofil00.xfd

Purchasing Address File	ap_puradr00.xfd
Memo Transaction File	ap_trxmem00.xfd
Vendor File	ap_venfil00.xfd
Vendor History File	ap_venhis00.xfd
Void Check File	ap_voidck00.xfd

**Account Receivable (AR)**

<b>File name</b>	<b>Dictionary file name</b>
Accounts Receivable Account File	ar_aracct00.xfd
A/R Codes File	ar_arcods00.xfd
Distribution to G/L File	ar_ardist00.xfd
Open Item File	ar_aopen00.xfd
Commission Due File	ar_comfil00.xfd
Customer Contacts File	ar_confil00.xfd
Cash Application File	ar_cshapl00.xfd
Customer History File	ar_cshtrx00.xfd
Customer History File	ar_cuhfil00.xfd
Customer File	ar_cusfil00.xfd
Deliver-to (Ship-to) File	ar_dlvfil00.xfd
Goods and Services File	ar_gdssvc00.xfd
Invoice History Auxiliary file	ar_ihsaux00.xfd
Invoice History Header File	ar_ihshdr00.xfd
Invoice History Line File	ar_ihslin00.xfd
Invoice History Serial Transaction File	ar_ihsser00.xfd
Cash History File	ar_kshhst00.xfd
Returned Check Charge File	ar_nsfchg00.xfd
Returned Check Transaction File	ar_nsftrx00.xfd
Returned Check Application File	ar_nsfapl00.xfd
Returned Check Application Job File	ar_nsfjob00.xfd
Invoice Auxiliary File	ar_piauxf00.xfd
Invoice Header File	ar_pihdrf00.xfd
Invoice Line Item File	ar_pilinf00.xfd
Miscellaneous Charges Distribution File	ar_sldtrx00.xfd
Miscellaneous Charges file	ar_slstrx00.xfd
Sales Rep File	ar_slmfil00.xfd
Prepaid Payments File	ar_ppctrx00.xfd
Taxes – Open File	ar_txopen00.xfd

**Check Reconciliation (CR)**

<b>File name</b>	<b>Dictionary file name</b>
Checking Account File	cr_ckacct00.xfd
Checkbook File	cr_ckbook00.xfd
Distribution to G/L File	cr_crdist00.xfd

**General Ledger (GL)**

<b>File name</b>	<b>Dictionary file name</b>
Budget File	gl_budget00.xfd
Chart of Accounts File	gl_chartf00.xfd
Comparative File	gl_cmprtv00.xfd
Codes File	gl_glcods00.xfd
Distributions Transaction File	gl_gnjtrx00.xfd
Cost Center Group File	gl_grpfil00.xfd
G/L Layout File	gl_layout00.xfd
General Journal Transaction File	gl_mltrxd00.xfd
General Journal Header File	gl_mltrhx00.xfd
General Ledger Transaction File	gl_trxfil00.xfd

**Inventory Control (IC)**

<b>File name</b>	<b>Dictionary file name</b>
Alternate Item File	ic_altitm00.xfd
Item Product Category File	ic_categf00.xfd
Warranty Coverage File	ic_covfil00.xfd
I/C Codes File	ic_iccods00.xfd
Distribution to G/L File	ic_icdist00.xfd
Warranty Codes File	ic_icrefm00.xfd
Serial File	ic_ictrkf00.xfd
Inventory Account File	ic_invact00.xfd
Inventory Transaction Job File	ic_invtrx00.xfd
Item File	ic_itmfil00.xfd
Item Numeric Sequence File	ic_itmnuf00.xfd
Inventory History File	ic_itxhis00.xfd
Kit File	ic_kitfil00.xfd
LIFO/FIFO Layer File	ic_layfil00.xfd
Price File	ic_prcfil00.xfd
Serial History File	ic_serhis00.xfd
Status File	ic_stafil00.xfd
Item Status Code File	ic_statfi00.xfd
Item Product Sub-category File	ic_subcat00.xfd
Units of Measure File	ic_unitfi00.xfd
Warehouse File	ic_whsfil00.xfd
Work Order Cost File	ic_wkocst00.xfd
Work Order File	ic_wkofil00.xfd
Work Order Header File	ic_wkohdr00.xfd
Work Order Line File	ic_wkolin00.xfd

**Job Cost (JC)**

<b>File name</b>	<b>Dictionary file name</b>
Cost Category File	jc_catfil00.xfd
Cost Transaction File	jc_csttrx00.xfd



Additional Job Description File	jc_descfi00.xfd
Job Detail File	jc_dtlfil00.xfd
Detail Holding File	jc_hldfil00.xfd
Distribution to G/L File	jc_jcdist00.xfd
Job Master File	jc_mstfil00.xfd

**Order Entry (OE)**

<b>File name</b>	<b>Dictionary file name</b>
Order Line Item File	oe_linitm00.xfd
Order Header File	oe_ordhdr00.xfd
Order Transaction File	oe_oetkxf00.xfd
Recurring Order Header File	oe_oerhdr00.xfd
Recurring Order Line File	oe_oerlin00.xfd

**Purchase Order (PO)**

<b>File name</b>	<b>Dictionary file name</b>
P/O Auxiliary File	po_auxfil00.xfd
Distribution to G/L File	po_podist00.xfd
P/O Header File	po_pohdrf00.xfd
P/O Line File	po_polinf00.xfd
Receivings History File	po_revhis00.xfd
Vendor/Item File	po_venitm00.xfd

**Payroll (PR)**

<b>File name</b>	<b>Dictionary file name</b>
Change Employee File	pr_cngemp00.xfd
Deduction and Earning Codes File	pr_dedcod00.xfd
Employee Direct Deposit Accounts File	pr_empdda00.xfd
Extended Information File	pr_empext00.xfd
Employee File	pr_empfil00.xfd
Payroll History File	pr_khisfl00.xfd
Adjustments File	pr_mantrx00.xfd
Multi-City / Multi-State File	pr_mcsfil00.xfd
Distribution to G/L File	pr_prdist00.xfd
Quarter to Date History File	pr_qtdhis00.xfd
City/State History File	pr_scdhis00.xfd
Tax Codes File	pr_taxcod00.xfd
Time Worked Distributions File	pr_timdis00.xfd
Time Worked File	pr_timtrx00.xfd
Void Check File	pr_vdmtrx00.xfd
Year to Date History File	pr_ytdhis00.xfd



### PBS Company System Files (RW)

<b>File name</b>	<b>Dictionary file name</b>
Valid G/L Account File	rw_acctfi00.xfd
Cash Account File	rw_cshact00.xfd

### Point of Sale (PS)

<b>File name</b>	<b>Dictionary file name</b>
Alternate Item File	ps_aliitm00.xfd
Credit Card File	ps_ccrdfi00.xfd
Contract Pricing File	ps_cntrpc00.xfd
Customer Restrictions File	ps_crhdhd00.xfd
Drawer File	ps_drwfil00.xfd
Layaway/Line Comments File	ps_lwycmt00.xfd
Layaway Header File	ps_lwyhdr00.xfd
Layaway Line File	ps_lwylin00.xfd
Layaway Payments File	ps_lwypay00.xfd
Layaway Tracking File	ps_lwytrk00.xfd
Override File	ps_ovrrid00.xfd
Transaction/Line Comments File	ps_poscmt00.xfd
Transaction Header File	ps_poshdr00.xfd
Transaction Line File	ps_poslin00.xfd
Transaction Payment File	ps_pospay00.xfd
Sales Summary File	ps_possum00.xfd
Services File	ps_possvc00.xfd
Pay out File	ps_potfil00.xfd
Payment Codes File	ps_pscods00.xfd
Control File	ps_psctlf00.xfd
POS Ship-to File	ps_psship00.xfd
Serial Transaction File	ps_pstkxf00.xfd
Posted Payments File	ps_pstpay00.xfd
Register File	ps_regifi00.xfd
Comments History File	ps_shscmt00.xfd
Header History File	ps_shshdr00.xfd
Line History File	ps_shsln00.xfd
Payment History File	ps_shspay00.xfd
Serial History File	ps_shsser00.xfd
Special Sale Prices	ps_spcsal00.xfd
Store File	ps_storfi00.xfd
User File	ps_userfi00.xfd

\* common to all companies

### PBS Common\* Files (RW)

<b>File name</b>	<b>Dictionary file name</b>
Multi-company File	rw_mlcmp.xfd

## Manufacturing Files

The following is a data dictionary list for the PBS Manufacturing Series files.

### Customer Order Processing

Customer Tracking File	co_bostrk00.xfd
Customer Control File	co_coctlf00.xfd
Backlog, Orders and Sales	co_copbos00.xfd
Daily Orders Tracking File	co_copord00.xfd
EDI Allowances	co_cpoalw00.xfd
EDI File	co_cpodpn00.xfd
EDI Order Line	co_cpodtl00.xfd
EDI Order Header	co_cpohdr00.xfd
EDI Trading Partner	co_cponam00.xfd
EDI File	co_cponte00.xfd
Terms	co_cpotrm00.xfd
Default Comments	co_csocom00.xfd
Sales Order Header	co_csohdr00.xfd
Sales Order Line Comments	co_csolcm00.xfd
Sales Order Line	co_csolin00.xfd
Lot/Serial Control File	co_csolsn00.xfd
Standard Certifications	co_ctffil00.xfd
Customer Type	co_custyp00.xfd
Price Discount	co_prcdsc00.xfd
Sales History	co_salhis00.xfd
EDI Standard Carrier Codes	co_scacod00.xfd
Ship-to Addresses	co_shipto00.xfd
Sales Accounts	co_slsact00.xfd
Sales Rep Commission	co_slscom00.xfd
Special Prices	co_spcprc00.xfd

### Capacity Planning

Control File	cp_cpctlf00.xfd
Detail Plan Detail	cp_dpldet00.xfd
Detail Plan Periods	cp_dplnpd00.xfd
Detail Plan Summary	cp_dpplsum00.xfd
Rough Plan Detail	cp_rpldet00.xfd
Rough Plan Periods	cp_rplnpd00.xfd
Rough Plan Summary	cp_rplsum00.xfd
Rough Planned Orders	cp_rpofil00.xfd
Resource Structures	cp_rsfil00.xfd

### Inventory Management

Branch Warehouse Items	im_bwhitm00.xfd
General Ledger Control File	im_glictl00.xfd

Inventory Cost Categories  
 Control File  
 Inventory History  
 Item Comments  
 Item Master File  
 Item Type Code  
 Lot/Serial Number History  
 Material Usage Variance  
 On hand Detail  
 Physical Count Records  
 Purchase Order Line Items  
 Period Quantity Sold History  
 Product Category  
 Shop Order Comments  
 Shop Orders  
 Shop Order Material Records  
 Warehouse Code

im\_iacwhs00.xfd  
 im\_icscat00.xfd  
 im\_imctlf00.xfd  
 im\_invhis00.xfd  
 im\_itmcom00.xfd  
 im\_itmfil00.xfd  
 im\_itmtyp00.xfd  
 im\_lsnhis00.xfd  
 im\_muvhis00.xfd  
 im\_ohidet00.xfd  
 im\_phycnt00.xfd  
 im\_politm00.xfd  
 im\_pqshis00.xfd  
 im\_prdcat00.xfd  
 im\_socomt00.xfd  
 im\_sofil00.xfd  
 im\_somatl00.xfd  
 im\_whscod00.xfd

**Manufacturing Job Costing**

Costing Barcode Work File  
 Employee Labor  
 Mfg. Employee File  
 Estimate Details  
 Estimate Header  
 Estimate Lines  
 Job Billings  
 Job Master  
 Labor Batch Import File  
 Labor Import Control File  
 Labor Exception Code  
 Control File  
 Misc. Cost Codes  
 Alternate Operations  
 Shop Order Labor  
 Shop Order Misc. Costs  
 Shop Order Misc. Costs Detail

mj\_empbar00.xfd  
 mj\_emplab00.xfd  
 mj\_empsbs.xfd  
 mj\_estdet00.xfd  
 mj\_esthdr00.xfd  
 mj\_estlin00.xfd  
 mj\_jobbil00.xfd  
 mj\_jobmst00.xfd  
 mj\_labimp00.xfd  
 mj\_lbactl00.xfd  
 mj\_lbxcod00.xfd  
 mj\_mjctlf00.xfd  
 mj\_mscccd00.xfd  
 mj\_soalto00.xfd  
 mj\_solab00.xfd  
 mj\_somsc00.xfd  
 mj\_sopmcd00.xfd

**Master Scheduling & MRP**

Branch Warehouse Factors  
 Forecast Periods  
 Firm Planned Orders  
 Planning Group Items  
 MRP Header  
 MRP Orders  
 MRP Pegging

ms\_bwhmrp00.xfd  
 ms\_fcstpd00.xfd  
 ms\_fpofil00.xfd  
 ms\_grpitm00.xfd  
 ms\_mrphdr00.xfd  
 ms\_mrpord00.xfd  
 ms\_mrppeg00.xfd

MRP Requirements	ms_mrprqt00.xfd
MRP Run File	ms_mrprun00.xfd
Control File	ms_msctlf00.xfd
Planning Group	ms_plngrp00.xfd
Schedule Periods	ms_schdpd00.xfd

**Product Definition**

Engineering References	pd_engref00.xfd
Labor Grade Rates	pd_labgrd00.xfd
Control File	pd_pdctlf00.xfd
Product Structures	pd_psfil00.xfd
Routing Instructions	pd_rtgins00.xfd
Routing Operations	pd_rtgopn00.xfd
Standard Operations Instructions	pd_stdins00.xfd
Standard Operations	pd_stdopn00.xfd
Work Centers	pd_wrkctr00.xfd

**Product Purchasing**

Blanket PO Line Comments	pp_bolcom00.xfd
Blanket PO Header	pp_bpohdr00.xfd
Blanket PO Lines	pp_bpolin00.xfd
Item Sources	pp_itmsrc00.xfd
Non Vendor Sources	pp_nonsrc00.xfd
Planner Buyer Code	pp_plnbuy00.xfd
Purchasing Addresses	pp_poaddr00.xfd
P.O. Change Log	pp_pocngl00.xfd
Comments Codes File	pp_pocomt00.xfd
Control File	pp_poctlf00.xfd
Invoice Distribution File	pp_poidst00.xfd
Invoice Transaction File	pp_poitr00.xfd
PO Line Comments	pp_polcom00.xfd
PO Header	pp_pphdrf00.xfd
Purchase Price Variance Detail	pp_ppvdet00.xfd
Purchase Price Summary	pp_ppvsum00.xfd
Reject Reason Code	pp_prrcod00.xfd
Receiving History	pp_rcvhis00.xfd
Rejected Material	pp_rjtmtil00.xfd
Vendor Performance	pp_venpfm00.xfd
Shipments In Transit	pp_vensit00.xfd
Vendor Warehouse	pp_venwhs00.xfd

## **Shop Floor Control**

Item Operation History	sf_iophis00.xfd
Operation Schedule	sf_opnscd00.xfd
Schedule Run File	sf_scdrun00.xfd
Control File	sf_sfctlf00.xfd
Operation/Material Assignment	sf_sopmtl00.xfd
Time Phased Capacities	sf_timcap00.xfd
Work Center Flow	sf_wctflo00.xfd

## 2. Concepts and Terms

The following terms are found in this guide and are described as they are used in this guide. For general accounting definitions consult the glossary in your Passport Business Solutions *System Manager User Manual*. Other definitions can be found in Chapter 1 of each Passport Business Solutions module user manual.

### Column

This term is used when referring to relational databases. A column can be considered the same as a field as defined above.

### Data File

A Passport Business Solutions data file contains one or more related records. For example, a group of employee records might comprise an employee file.

### Data Source Name (DSN)

A data source name is the name you assign to a group of AcuCOBOL Vision or Relative files that you want to access via ODBC.

### Database

A database, loosely speaking, refers to all available data, whether contained in one file or many files.

In Passport Business Solutions, the database consists of multiple files related to a specific module. These files are standardly stored in a folder by module. For example, Accounts Receivable files are standardly stored in a folder named AR00. Accounts Payable files are standardly stored in a folder named AP00.

In relational database terminology, a database consists of one or more files that contain one or more tables.

### Field

A data field consists of one or more characters that represent a single piece of information. For example, a first name, a last name, and an amount are all data fields. The content, or value, of the field "first name" might be "John" or "Debbie" or any other "first name" consistent with the rules governing the content of the "first name" field. The content, or value, of the field "amount" might be "129" or "5.98" or any other "amount" consistent with the rules governing the contents of the field "amount".

Fields may carry any name, but the content type specifies the rules governing the content of a field. Passport Business Solutions fields available to an ODBC-enabled application are classified as type "alphanumeric," "integer," "decimal," or "date" fields.

Alphanumeric fields may contain letters of the alphabet, numbers, special symbols (\$, \*, :, #),

or any combination of these three kinds of characters. Some alphanumeric fields can only have uppercase characters and some can have both upper and lower case.

Integer fields may contain only whole numbers. They may not contain letters, special symbols, or fractional numbers.

Decimal fields may contain whole numbers and fractional numbers expressed in decimal notation.

Date fields contain only dates.

### **Open DataBase Connectivity (ODBC)**

This is a data access standard developed by Microsoft. This standard allows data to be exchanged between database systems that use incompatible data access methods. This is the standard used by AcuODBC to make Passport Business Solutions data available to ODBC-enabled applications such as Excel®, Access® or Crystal Reports®.

### **Record**

Records are comprised of one or more related fields. For example, an employee record might contain a "first name" and a "last name" field. It might also contain a "social security number" field and a "marital status" field.

### **Row**

This term is used when referring to relational databases. A row can be considered the same as a record as defined above.

### **Table**

This term is used when referring to relational databases. A table can be considered the same as a file as defined above.

### **XFD**

This is an abbreviation for **external file definition** and it is an extension for a file type used with AcuODBC. These files contain a definition for one PBS file. An example of one of these files is ap\_venfil00.xfd. The 'ap' represents Accounts Payable. The 'venfil' represents Vendor file. The '00' means it is for company '00'.

All the XFD files make up the data dictionary.



## 3. AcuODBC and PBS Data Dictionary Installations

### Installing AcuODBC

AcuCorp's *extend 6*<sup>®</sup> *AcuODBC* product is the driver program for ODBC access to Passport Business Solutions AcuCorp vision data files. AcuODBC acts as a gateway to your Passport Business Solutions data using Microsoft's Open Database Connectivity (ODBC) standard.

You will need the Product Codes and Keys in order to complete the installation of the AcuODBC. This should be on a piece of paper titled Important Licensing Information included with the AcuODBC shipment.

If you are also installing the AcuODBC Server for Windows follow the installation instructions in the [Server/Client Installation and Configuration](#) section in this document. For AcuODBC Server for Linux or UNIX you will need a third CD ROM, which is labeled Version 6.2.0.1 for UNIX platforms. The installation instructions are in the [UNIX/Linux AcuODBC Server Installation](#) section of this document.

If you have AcuODBC Server you may install either the client or server first. However you may not know what to enter for the client configuration until the server is fully installed.

The following instructions will work for an AcuODBC Version 6.2 Windows single user or client installation:

0. Insert the ACUCOBOL-GT CD ROM labeled Version 6.2.0.1 for Microsoft Windows 98 SE, 2000, 2003, NT, and XP into your computer's CD ROM drive.
1. The *Setup for Version 6.2* screen will display. Click on **Next**.
2. The *Version 6.2 installation* screen will display. Click on **Next**.
3. The *Choose Destination Location* screen will display. Either use the default location or Browse to another location and click Next.
4. The *Select Products* screen will display. Click on the box next to **AcuODBC (R)**. There are 2 columns of selections and it is in the middle of the left side. Then click on **Next**.
5. The *Installation Settings* window will display. Click on Next. The setup will copy the AcuODBC (R) components into the directory location.

6. The *Update Redistributable ODBC files* screen displays. Select Yes.
7. The *Activator Wizard 6.2* will display. Enter the **Product Code** and then enter the **Product Key** without spaces. Double check the code and key to verify that it is entered properly and click on **Finish**. A message will display that indicates that the installation is complete.
8. A *Complete* screen will display. You may be asked to restart the computer now or later. If you do, you will need to restart the computer for the AcuODBC to function properly.
9. You are then asked if you want to install the documentation set. Select No for this. The documentation is available on the CD ROM and you can access it there. In most cases you do not need it.
10. To verify that the AcuODBC is installed, on your computer workstation, select **Start > Settings > Control panel**.

On Windows 2000, Windows XP Pro and Windows Vista select *Administrative Tools > Data sources (ODBC)*. Select the *Drivers* tab. The AcuODBC Driver Version 6.02.01.xxx should be installed.

On Windows 98 SE, look for the *ODBC Data Sources* under *Control Panel* and then select at the *Drivers* tab to view the driver version 6.02.00.xxxx.

## Installing the PBS Data Dictionary for Windows (PBS Data Dictionary CD ROM)

The PBS Data Dictionary installation provides an XFD file (External File Definition) for each data file you will have access to using AcuODBC with Passport Business Solutions. XFD is the extension for each file. All of these XFD files will be installed in the "odbc/odbc00" directory (folder) under your PBS top-level directory (folder).

There are two Windows installations provided on the CD ROM. One is for the PBS financial and distribution files. The other is for the manufacturing files.

The installation of the PBS data dictionary for UNIX and Linux is covered in the "AcuODBC for UNIX/Linux Server Installation and Configuration" section later in this document.

### Do the following steps for the installation:

0. You must be on the computer where PBS is installed.
1. Insert your PBS Data Dictionary CD ROM into the CD ROM Drive.
2. Using Windows Explorer, browse to the CD ROM and double click on the pbs\_odbc.exe file. For the manufacturing data dictionary double click on mfg\_odbc.exe.

3. You will be prompted for a path. The path is defaulted to C:\Program files\PSI\PBS. In order for the multi-company ODBC utility to work properly, you must install the PBS data dictionary in the top-level Passport Business Solutions directory. This is the standard location for data dictionary XFD files.

## Installing the Data Dictionary for Multi-Companies

### The Data Dictionary Multi-Company Utility

If you are only using company 00 you can skip this step.

You must be a Passport Business Solutions administrative user to run this utility.

The **Data Dictionary Multi-Company Utility** will copy the contents of *ODBC00* into a new directory, rename and alter the data dictionary files. The directory name will depend on the company number. If it is company '01', then the directory will be *ODBC01*.

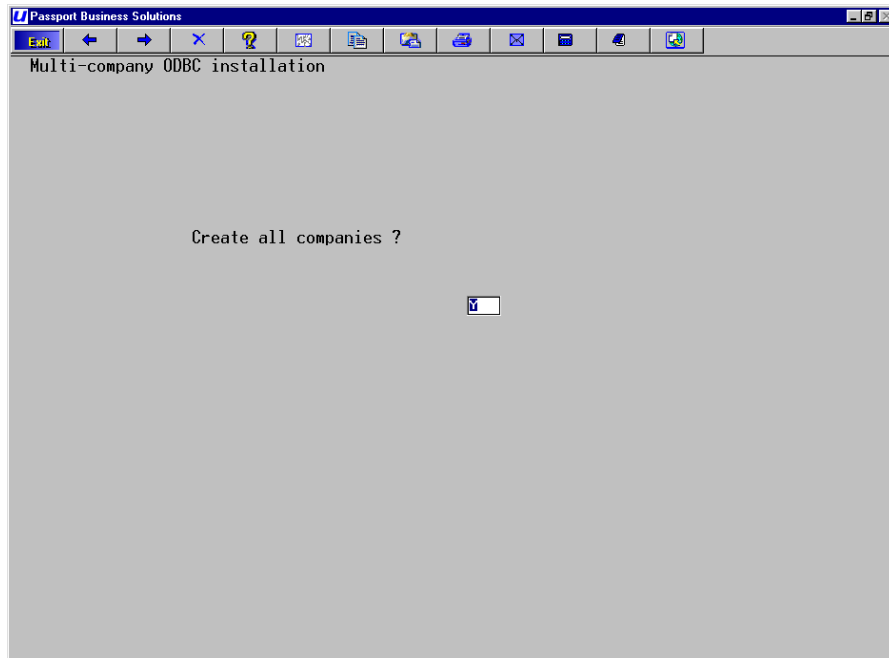
You must first create the companies in Passport Business Solutions before you can run the **Multi-Company Utility**. You must be set up with standard data paths in Passport Business Solutions. When you add a company in Passport Business Solutions you can run the **Multi-Company Utility** again.

The following example creates a PBS data dictionary for company TH. To create a data dictionary XFD file set, open a command prompt and do the following.

Go to the top-level PBS directory and do the following:

Type  
**adodbc**

Enter an administrative user ID and, if needed, a password. You will see the following screen:

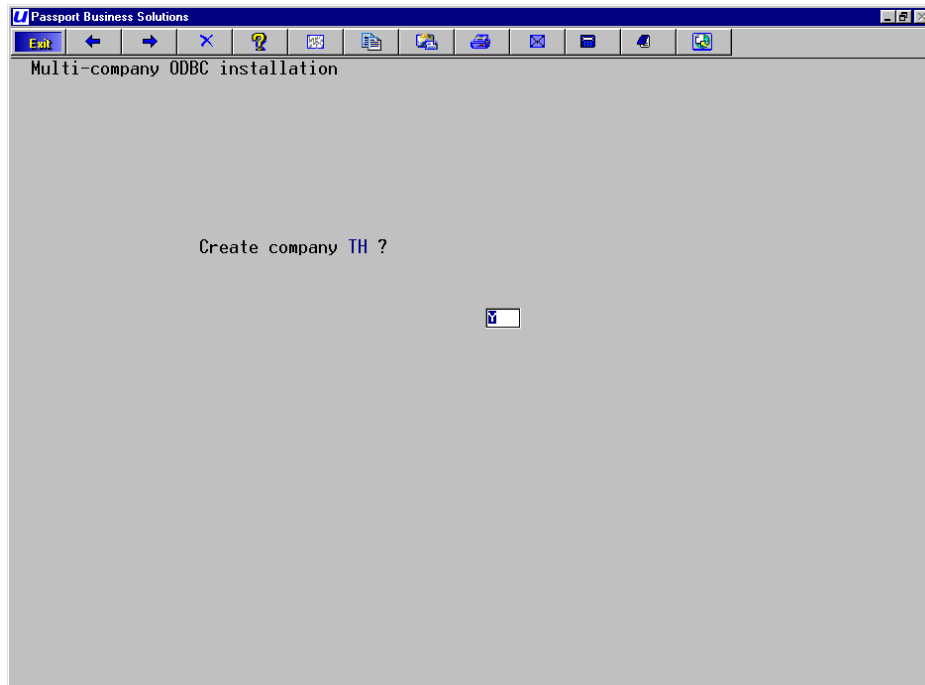


If you want to create a data dictionary for each of the companies installed with Passport Business Solutions, select the <Enter> key. The utility will close when it is finished.

In this case you are only going to create a data dictionary XFD file set for Company 'TH'.

Type  
**N**

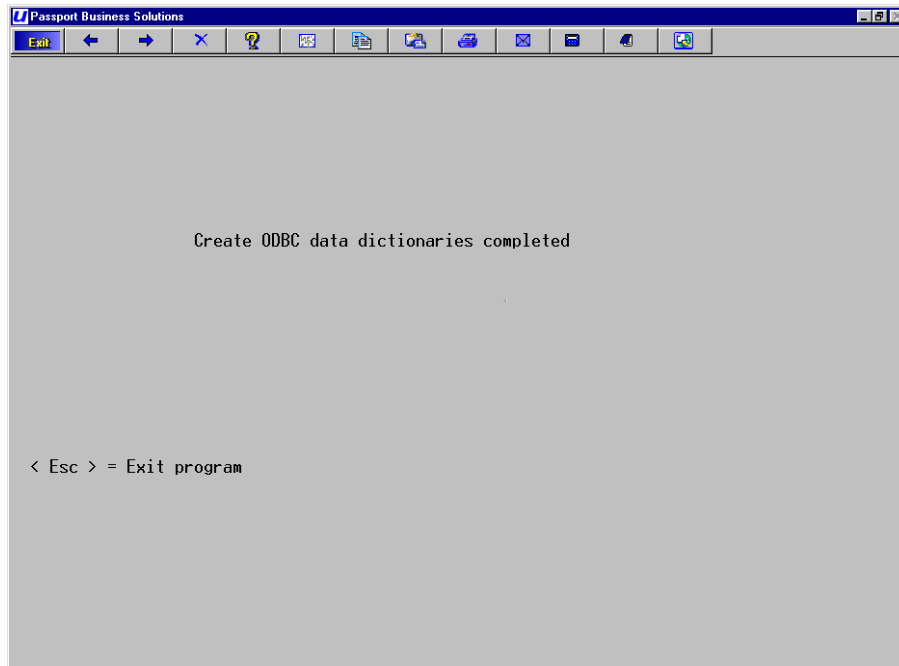
You will see the following screen.



Type  
**<Enter>**

The utility will copy the data dictionary XFD files from the directory ODBC00 to ODBCTH. It will also rename and alter the data in each XFD file so that it will access the company 'TH' data files.

If there are other companies, you can continue with the installation. Once you are finished, you can click on the 'x'. If the utility does not find any additional Passport Business Solutions companies you will see the following screen:



Press the <Esc> key to close the program or click on the 'x'.

This completes the installation of the data dictionary XFD files for multiple PBS companies.

After the multi-company utility is run, for data security purposes you may want to move specific XFD files to another location on the server or local workstation before you configure the ODBC. For more information read the appendix [Data Security and Limiting Access to PBS Data](#). Whenever possible we do recommend that you keep the XFD files in the standard location.

## 4. AcuODBC Product Configuration

After you have installed the *extend 6 AcuODBC Data Interface for Windows* and the PBS Data Dictionary XFD files, you must configure a Data Source Name (DSN) that will connect your PBS Data Dictionary XFD files with your actual Passport Business Solutions data files. This is done using the Windows ODBC Data Source Administrator.

If the PBS Data Dictionary XFD files have been installed correctly, the files reside in the folder "/ODBC/odbc00" in your Passport Business Solutions top-level folder. For example, if your Passport Business Solutions software is installed on the C: drive in a folder named Passport Business Solutions, your data dictionary files will be installed in C:/PBS/odbc/odbc00. If you ran the multi-company utility other directories will be there as well.

Each installation is different and there is not one set of instructions that can tell you exactly how to set up ODBC access on your system.

### Setup Example

The following example sets up ODBC access to Passport Business Solutions Accounts Payable, Accounts Receivable, and General Ledger data installed in C:\PBS. To setup your AcuODBC DSN

In Windows 2000, Windows XP or Windows Vista

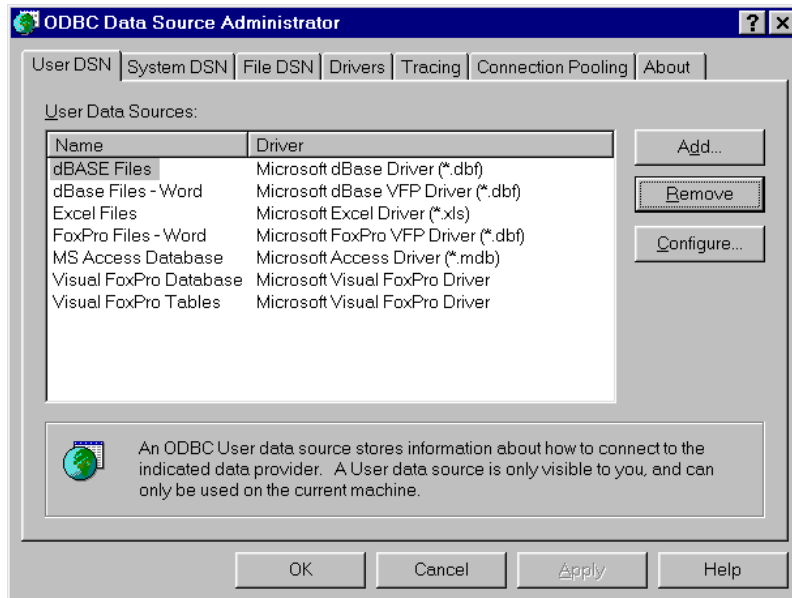
Select:

**Start > Settings > Control Panel > Administrative tools > Data Sources (ODBC)**

Or in Windows 98 Select:

**Start > Settings > Control Panel > ODBC Data Sources**





This opens your *ODBC Data Source Administrator* window. You use this application to configure your Passport Business Solutions ODBC access. You may elect to create User DSN, System DSN, or File DSN as it relates to the first three tabs in the above screen.

### User DSN

Configuring a DSN under this tab creates a data source that is local to the computer and can only be used by the current user.

### System DSN

Configuring a DSN under this tab creates a data source that is local to the computer. It is not user specific and any user having the correct privileges may access the data source.

### File DSN

These DSNs can be shared among all users who have the same drivers installed. These data sources do not have to be local to a particular computer on the network or dedicated to a particular user. When you created a User DSN or System DSN a File DSN with the same name will be created as well.

Note: When deleting a User DSN or System DSN the File DSN still remains as a Data source. Therefore you should also delete the File DSN. Otherwise when choosing the Data source, it still appears to be available but will error when selecting it.

For additional information on DSNs, consult your AcuODBC help file.

Once you have determined the type of data source that you want to create, select the appropriate tab and add this data source to the list.

## Left Click on Add

You will be prompted to select a driver that you want to use for a data source. Select the AcuODBC driver. This is the driver that will be used to access Passport Business Solutions data.

## Double Left Click on AcuODBC Click on Finish

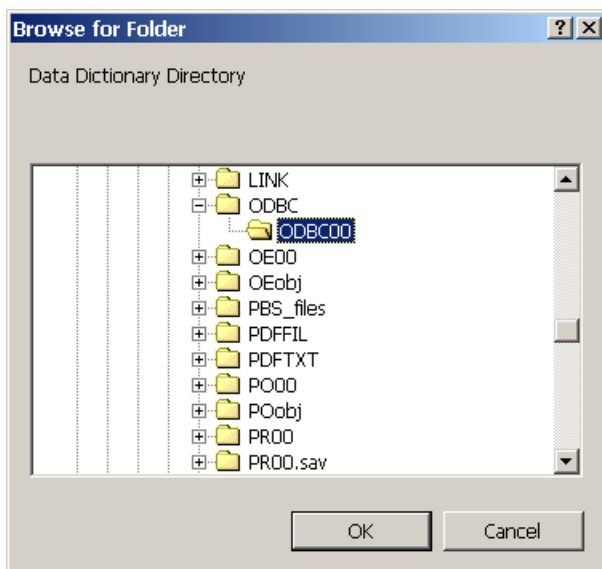
The AcuODBC Configuration dialog will be displayed. In the Data Source Name field type in the name you want to give to this data source. This name may be anything your want, but should be representative of the data you intend to access. If you are using only one company in PBS, you could type 'PBS' in this field. If you are using multiple companies you might type in something like "PBS-00" or "Accounting Data – Company XYZ" in this field

Next, in the XFD Directory field, enter the directory or folder that contains your PBS Data Dictionary XFD files. For example, using the Browse button to select the appropriate folder. In our case the folder is C:\PBS\odbc\odbc00. Click on the directory location, such as C:\PBS\odbc\odbc00 folder.

The path to the XFD directory CANNOT contain spaces. There are two options to solve this:

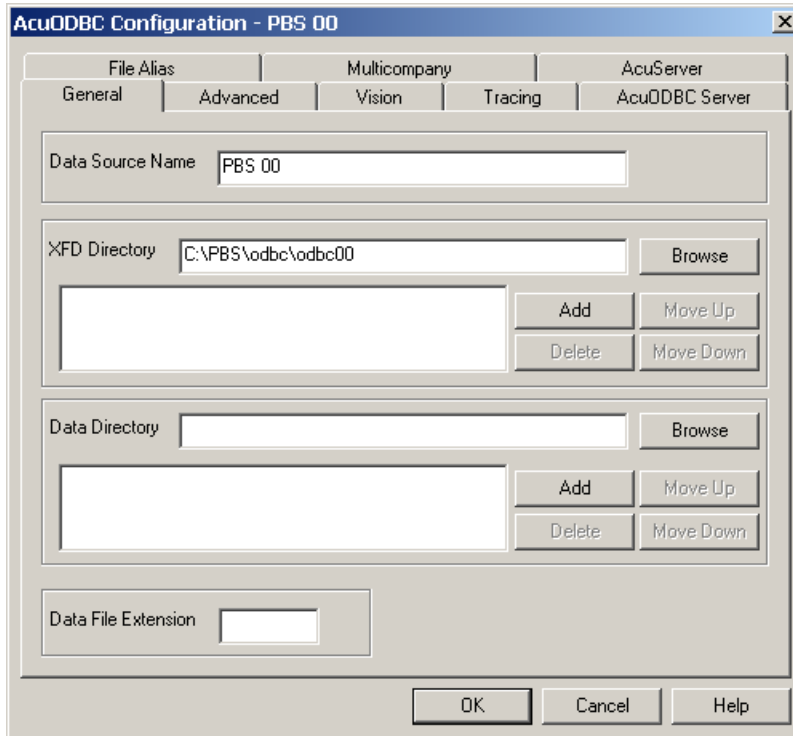
1. You may use a DOS contraction of the name. For example "Program files", which will not work, can be substituted with "progra~1" which will work.
2. The other option is to move the PBS installation to another directory where there is no space in the path.

The browse window will look similar to the one displayed below.



Left Click  
**OK**

Your AcuODBC Setup windows will look similar to this:



Left Click  
**OK**

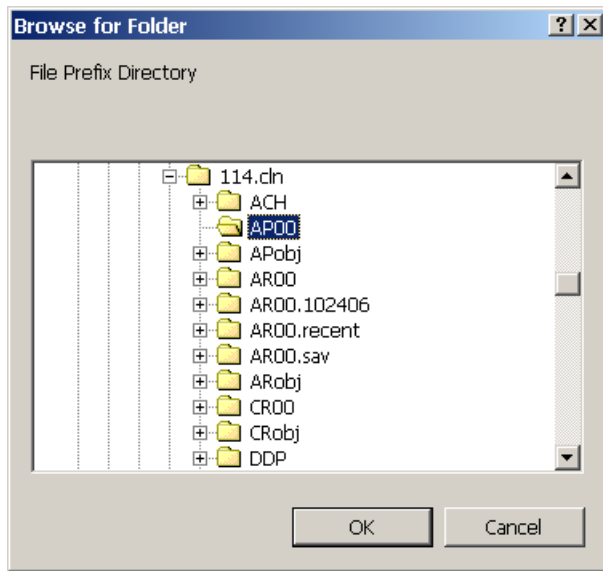
### PBS Data File Locations

To complete setup of the DNS, you must now configure the data source to connect to your PBS data files.

This is done from the same AcuODBC Configuration setup window as above. Enter the path in the data directory field enter the path to your PBS module. For example, using the Browse button to select the appropriate folder for Accounts Payable, Accounts Receivable and General Ledger. In our case the folder is C:\PBS\APOO. To add this location, do the following.

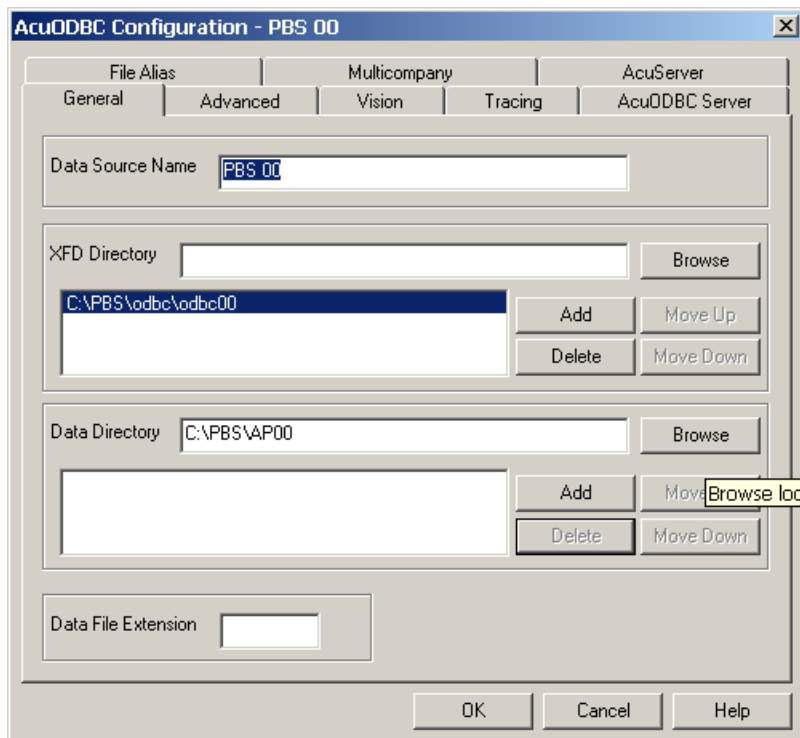
Left Click  
**Browse**

Browse to the proper directory and select AP00. The window will look like this:



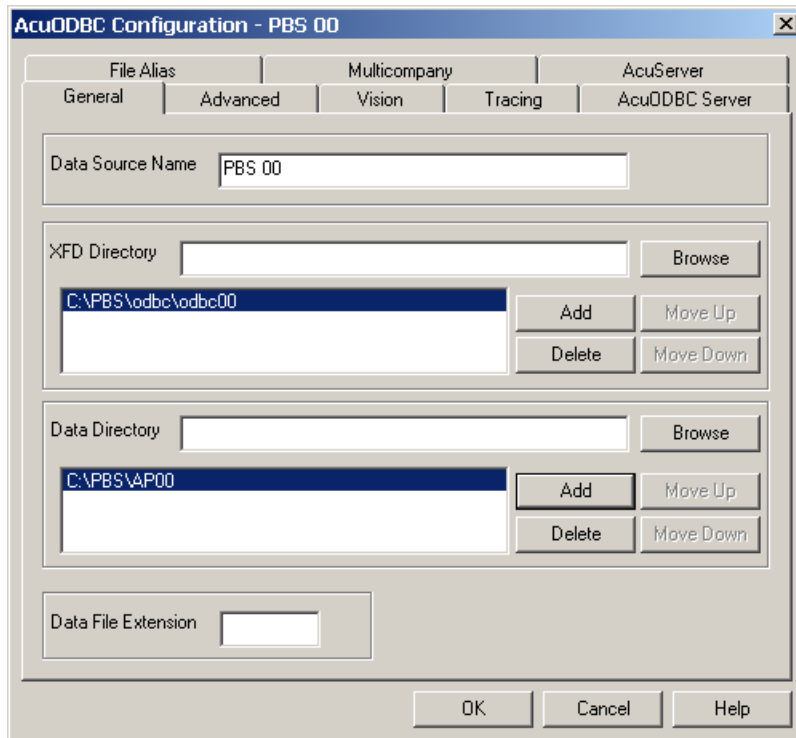
Left Click  
**OK**

The AcuODBC Configuration window will again be displayed and will look like the following:



Left Click  
**Add**

Adding will move the path into the larger field just below the XFD Directory as seen below:

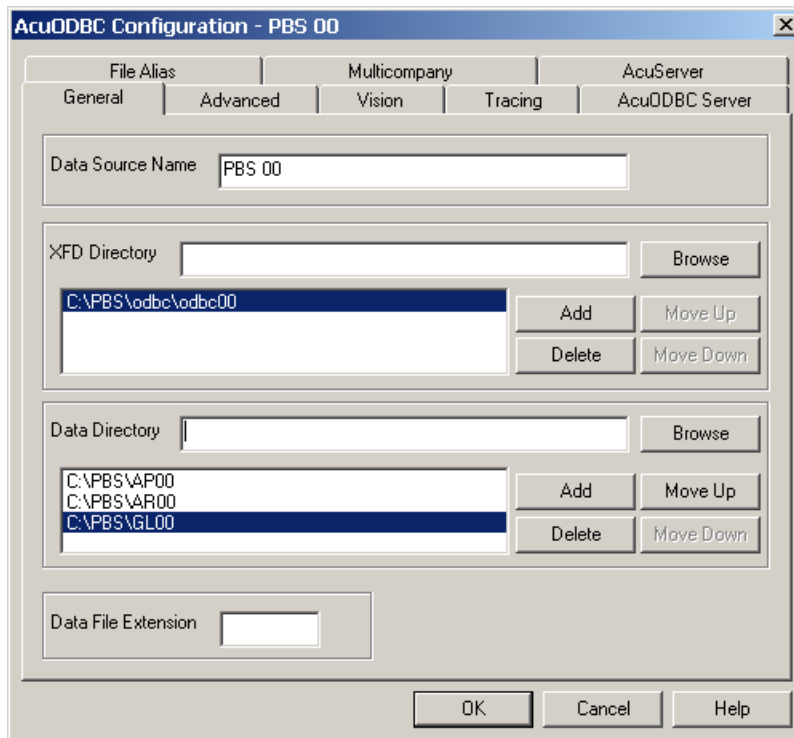


You must do the same browse step for all the PBS modules that you want to have ODBC access.

**TIP:** Here is a shortcut for adding paths to PBS data directories.

After you have selected and added a path, you can double click on the path that was added, in this case the one with AP00 to again display the path in the data dictionary field. You then modify this path to access Accounts Receivable by replacing the AP with AR in the path. Then Click on the Add button and the path to AR will also display in the box below. Per our example, do the same for adding GL (General Ledger).

When you are finished the following screen will display:



When you are finished, then click

**OK**

and then click

**OK**

to close the ODBC Data Source Administrator. You can now close the Control Panel as well.

You must do the same steps for each PBS Company where you require access via ODBC.

This completes the setup of your AcuODBC DNS. You will now be able to gain access to your Passport Business Solutions data for A/P, A/R, and G/L using ODBC-enabled applications.

ODBC-enabled applications use different setup routines and configuration parameters. Setting up your ODBC-enabled applications is beyond the scope of this document. Refer to the user manual or on-line help for information about how your specific ODBC-enabled application makes use of the Windows ODBC standard to access external data.

## 5. Server/Client Installation and Configuration

### AcuODBC® Server for Windows

#### Pre-Installation Information

Before beginning, you must have the following.

- The CD ROM labeled PBS Data Dictionary. You must use the Version 6.2 Data dictionary because date fields have a particular formatting requirement when being accessed by the Version 6.2 AcuODBC. If you do not have a PBS Data Dictionary for Version 6.2, contact PSI support.
- The “AcuCorp *extend* 6 Version 6.2.0.1 CD ROM for Microsoft Windows 98, ME, Windows 2000, Windows 2003, Windows NT, and Windows XP for the installation of the AcuODBC Client and AcuODBC Server.
- You will need a set of product code and keys for both the client and the server. These can be found on the piece of paper titled Important Licensing Information.

#### Step 1: Install AcuODBC Server for Windows

Install the AcuODBC Server software on your server. You can use the following steps or you can follow the documentation supplied by Acucorp.

1. The AcuCorp CD should auto-start.
2. The first Window is Setup for Version 6.2.0  
**Select Next**
3. The next Window is Version 6.2.0 installation.  
**Select Next**
4. The next window asks you to Choose Destination Location. Use the default location provided.

**Select Next**

If you have previously installed a Version 6.2 AcuCOBOL-GT product to this same default directory, then it will ask you if you want to over-write. It is OK to over-write, because you are installing a different product.

5. Then you are on the Select Products window.  
Click the box next to *AcuODBC Server*. Do not selection anything else!



**Select Next**

6. Next the Installation Settings window displays. It warns you that you need a license (product code and keys) in order to install a working product.

**Select Yes**

7. You will come to the Activator Wizard Screen that asks you to enter the Product Code and Keys. Enter them now, but do not use any spaces. Triple-check your data entry after entering the Code and Key.

**Select Finish.**

8. Navigate, using Windows explore, to the CD ROM drive.
9. You may have to manually install the *etc* directory from the AcuCorp CD ROM. To do this open Windows Explore<sup>®</sup> and navigate the CD ROM. Copy the *etc* directory to the *C:\Acucorp\Acucbl620\AcuGT* directory. Remove the Read-only status on all the files in the *etc* directory.

**Step 2: AcuAccess file installation**

The AcuAccess file is needed for entering an ODBC Server security configuration, DSN configuration and starting the ODBC service.

There is a zip file on the PBS Data Dictionary CD ROM called. *AcuAccess-etc.zip*. Following the install of AcuODBC Server for Windows, please unzip this file into the top-level PBS directory. It will create a directory called *etc* with several files in the directory.

The zip file components include the following:

- *AcuAccess.dat*
- *AcuAccess.vix*
- *odbc.cfg*

You will need to setup the path to the *AcuAccess* file in the *odbc.cfg* file. Based on the directions above, you just installed under the top-level PBS directory. You must enter the path to the *etc* directory. The default location provided is:

*C:\PBS\etc\AcuAccess*

The setup of the *AcuAccess* file is explained in the next section.

*Perform steps 3-5 on your server using the ODBC Server Control Panel.  
To run this, select the following:*

**Start > Programs > Acucorp 6.2.0 > AcuODBC > AcuODBC Server > AcuODBC Server Control Panel**

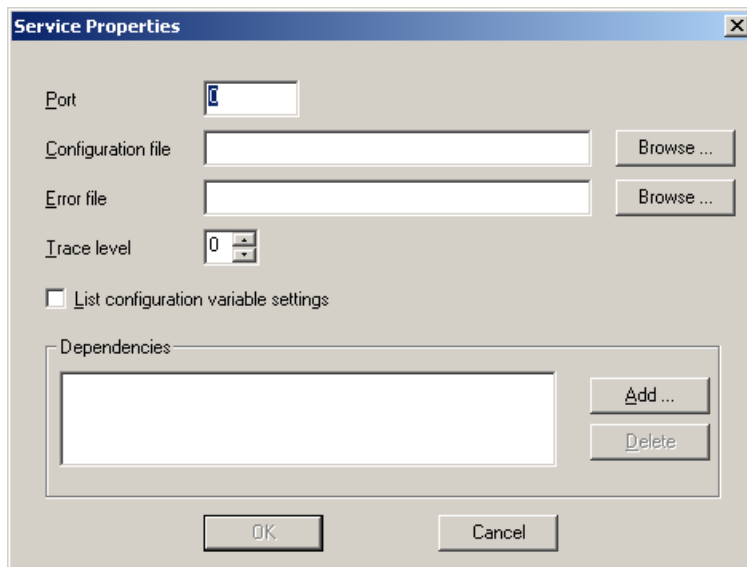
### Step 3: Configure your DSN

To configure the DSN, do the following steps. First left click

#### Services Tab

Then click  
**New**

The following screen will display:



#### Enter the port number.

For Port, choose a port number that will be used by client machines to access the ODBC server. This example is 20222. Check with your system administrator for port availability and usage on your particular system.

Here is a note for the system administrator. The AcuODBC daemon can work with privileged port numbers (from 0 to 1023) and with non-privileged port numbers (1024 and higher, up to 32767).

Setup note: The ACUODBCS\_PORT number must be specified in both the server configuration file and on the AcuODBC Server tab on the AcuODBC Configuration property sheet on the client. *The values of both variables must match.* If you change the value in one location, you must also change it in the other.

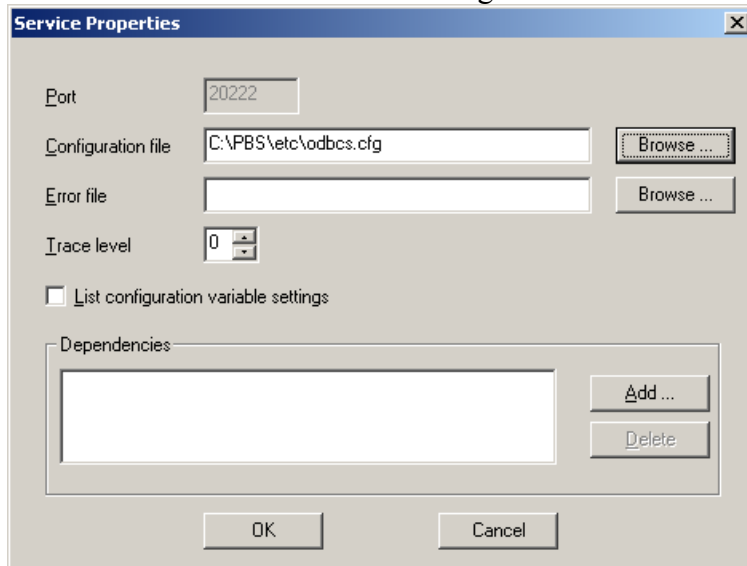
**Enter or browse to the configuration file location.**

In our example we are using:

C:\PBS\etc\AcuAccess

Entering an Error file location is optional. If you do, you must manually create an error text file. Give it any name you like.

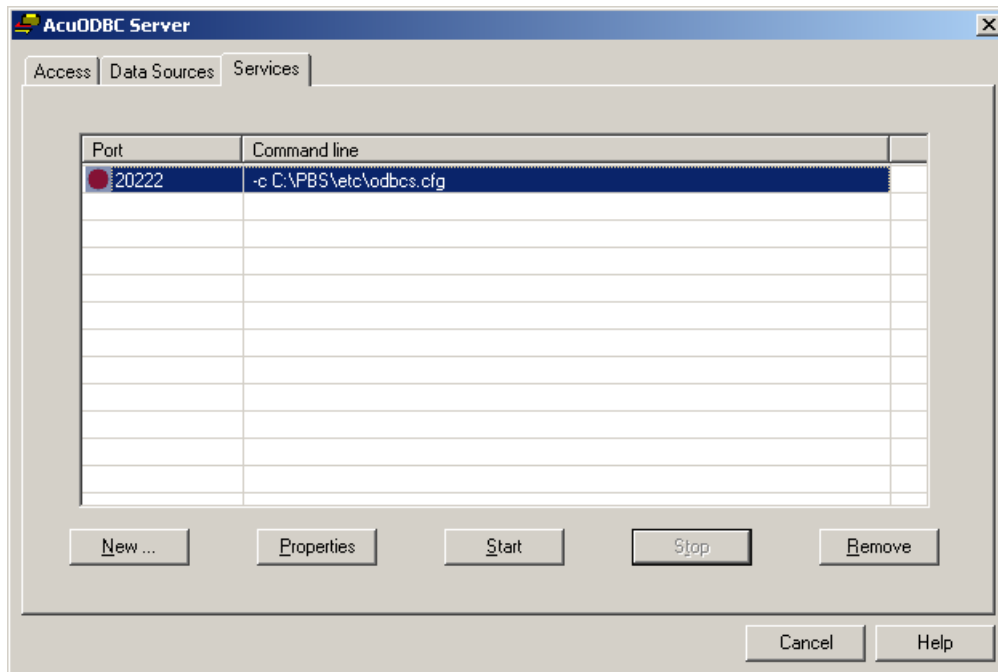
The **Services** tab will look something like this:



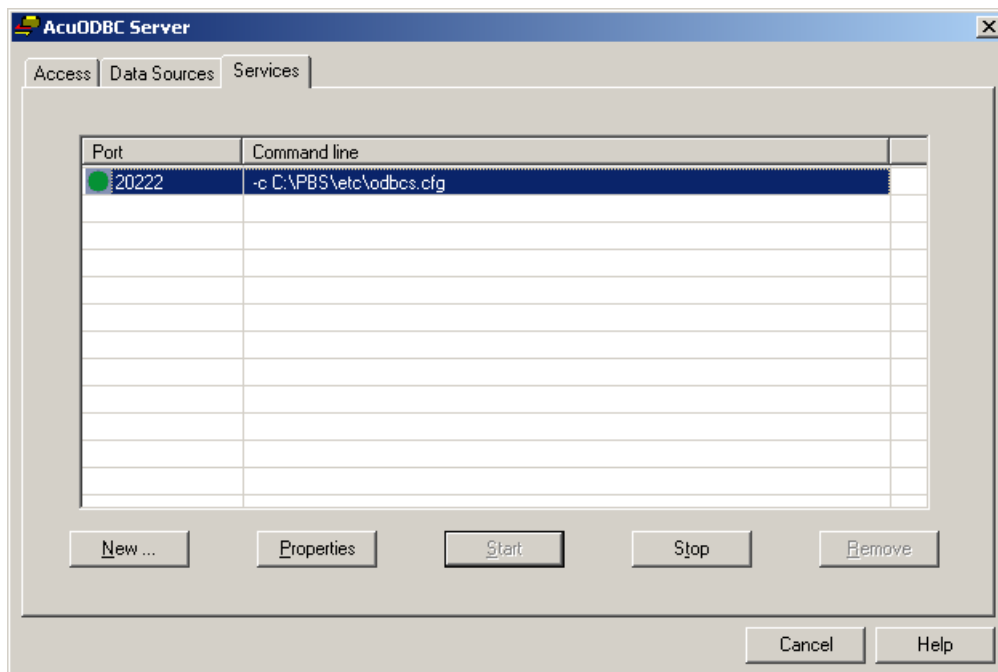
Click  
**OK**

**Step 4: Start the Service**

Click on the entry that you just added. You will see a screen like the following:



**You must start the service.** Click on the **Start** button to start the service. When the service starts the red button on the left turns green, the Start button is greyed out and the screen will look something like the following;



Note: If for any reason you have to reboot your server, please verify that the AcuODBC Server service is still running. If not, restart the service.

## **Step 5: Configure the Data Source**

You must install the PBS Data Dictionary before you do this step. You may also need to run the Data Dictionary multi-company utility. If you have not done so, please do so now. If you need instructions please read chapter 3.

Then left click on

### **Data sources Tab**

Then click

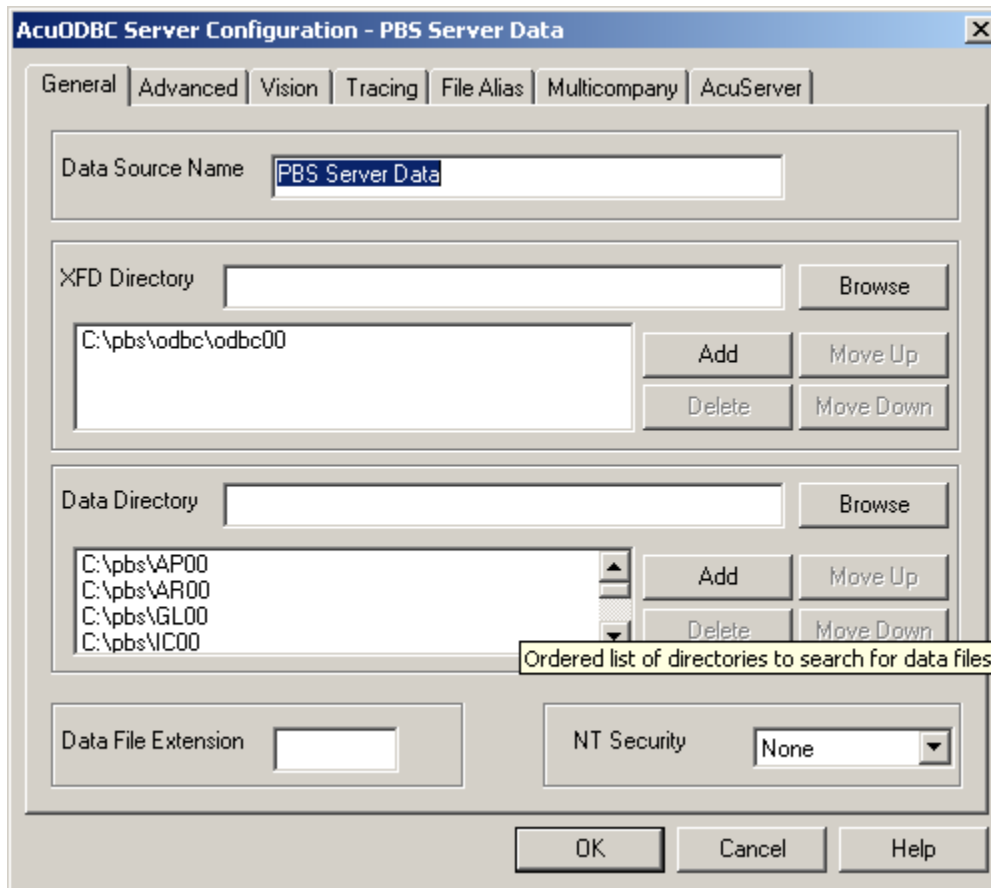
### **New**

Enter a data source name. When you configure the client ODBC, you will use the same name you enter here.

Use the “XFD Directory” browse button to browse to your XFD data dictionary directory and add that path.

Use the “Data Directory” browse button to browse to the location of each data directory where your PBS data files are stored. After each browse, click the Add button to add the directory to the list. As a shortcut, you can double click items in the directory list and it will put the path info back into the entry box. You can then edit the module, from AR00 to AP00 for example, and then “Add” this new entry to the list. This will save time, as you will not have to browse for each data directory.

When you have completed the above steps, you will see a window similar to the following:



If there are spaces in the *XFD directory* path, add double quotes on either end of the path. Here is an example.

`"C:\Program files\Passport Business Solutions\PBS\odbc\odbc00"`

Double quotes are not needed for the *Data directory* path if there are spaces.

When finished, close this window and save what you have entered

Click

**OK**

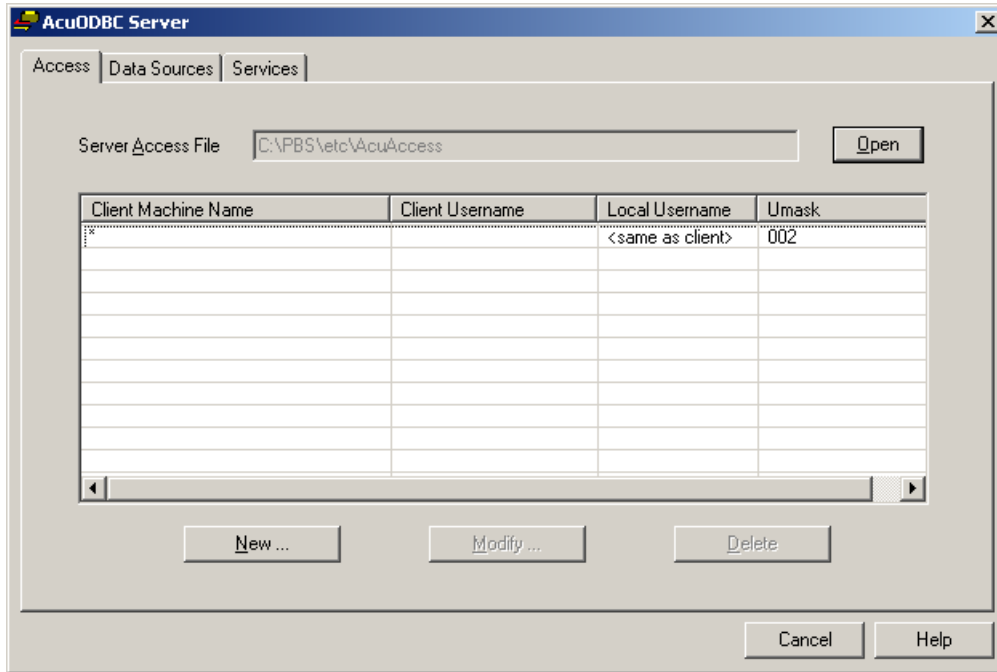
## Step 6. Install and Configure the AcuODBC Client for Windows

Skip to the section below called [Configure the ODBC Client for a Connection to the Server](#) for the steps.

### Security Considerations

Be aware that in the installation instructions above, the server was setup to allow access to all users. Thus if someone knows how to set up the client DSN for your data sources, and they know the DSN name, they will be able to access the data files.

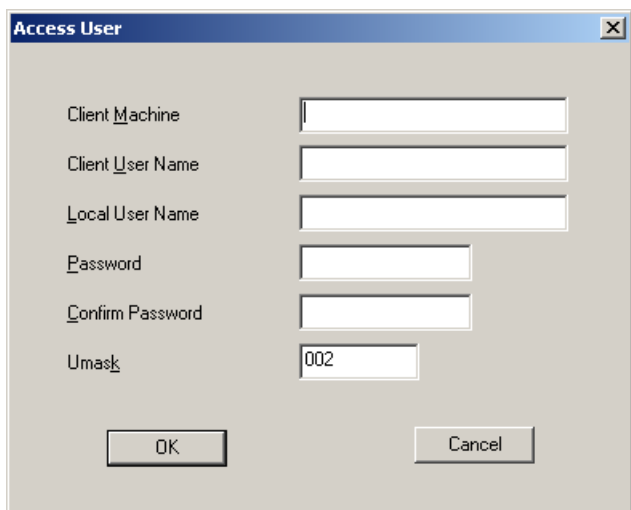
On the AcuODBC Server *Access* tab you may setup limit access to the ODBC Server. You must first open the AcuAccess file before you can setup Server access. This is the screen that lists user accesses:



To enter a access for a new user

Click **New**

You will see a screen like the following:





Please refer to the AcuCorp ODBC Server documentation for instructions on setting up and using this feature.

## AcuODBC for UNIX/Linux Server Installation and Configuration

The person who installs and configures the server should have a good grasp of UNIX/Linux system administration.

### Pre-Installation Information

Before beginning, you must have the following:

- The CD ROM labeled PBS Data Dictionary. You must use the Version 6.2 PBS Data Dictionary because date fields have a particular formatting requirement when being accessed by the Version 6.2 AcuODBC. If you do not have a PBS Data Dictionary for Version 6.2, contact PSI support.
- The “AcuCorp *extend*<sup>®</sup> 6 CD ROM labeled Version 6.2.0.1 for Microsoft<sup>®</sup> Windows<sup>®</sup> 98, ME, 2000, 2003, NT, and XP for the installation of the AcuODBC Client.
- The Acucorp *extend*<sup>®</sup> 6 AcuODBC Server Version 6.2 product CD. This is labeled Version 6.2.0.1 for UNIX Platforms.
- You will need a set of product code and keys for both the client and the server. These are on a piece of paper labeled Important Licensing Information.

Also note the following:

- Insure that the versions of your AcuODBC CD ROM and your AcuODBC Server CD ROM versions match.
- Verify that you have a consistent network connection between your Windows clients and your Unix/Linux server.

### Install the Acucorp ODBC Server software

Install the AcuODBC Server software using the Acucorp Product CD for Unix/Linux. You must have the ODBC Server product code and keys to complete this installation and this can be found on the piece of paper titled Important Licensing Information. The product code and keys for AcuODBC is different than the code and keys for AcuODBC Server.

1. Mount the installation CD ROM in the CD ROM drive using the appropriate mount command for your operating system. On some systems the CD ROM may auto-mount.
2. Change to the mount directory and type:  
`./install`

3. A platform list displayed. It will look something like the following:

```
1 AIX 4.1
2 AIX 4.3.2 (32-bit) PowerPC
3 AIX 5.2L (32-bit) PowerPC
4 AIX 5.2L (64-bit) PowerPC
5 HP/UX 10.20
6 HP/UX 11.0 (32-bit)
7 HP/UX 11.0 (64-bit)
8 HP/UX 11.22 (32-bit) IA-64
9 HP/UX 11.22 (64-bit) IA-64
10 HP/UX 11i (32-bit)
11 HP/UX 11i (64-bit)
12 Linux (glibc 2.0) Intel x86
13 Linux (glibc 2.1) Intel x86
14 Linux (glibc 2.2) IA-64
15 Linux (glibc 2.2) Intel x86
16 Linux (glibc 2.2) S/390
17 Linux (glibc 2.2) iSeries
```

Press 'Enter' for the second half of the list.

Your selection? >

If you do not see your operating system listed above, press **Enter** to view the second half of the list.

Your selection? >

Please enter the number corresponding to your platform:

```
18 Linux (glibc 2.3) Intel x86
19 SCO UNIX OpenServer 5.0.0 ELF
20 SCO UNIX OpenServer 5.0.4 ELF
21 SCO UNIX OpenServer 5.0.5 ELF
22 SCO UNIX OpenServer 5.0.6 ELF
23 SCO UNIX OpenServer 5.0.7 ELF ODS
24 SCO UnixWare 7.0 ELF
25 SCO UnixWare 7.1 ELF
26 Solaris 7.0 (SPARC) 32-bit
27 Solaris 7.0 (SPARC) 64-bit
28 Solaris 8.0 (Intel x86)
29 Solaris 8.0 (SPARC) 32-bit
30 Solaris 8.0 (SPARC) 64-bit
31 Solaris 9.0 (SPARC) 32-bit
32 Solaris 9.0 (SPARC) 64-bit
33 UNIX SVR4v3 (MP-RAS 3.x)
```

Press 'Enter' for the first half of the list.

The platforms that are supported in PBS are bolded. Enter the number corresponding to your operating system platform.

4. When prompted, specify an installation directory. Press **Enter** to accept the default directory (/usr/acucobol6x), or type the name of an alternate directory at the prompt.

If you have previously installed Acucorp products *do not select the directory where your products are currently stored* or you may overwrite the previous version. You will *not* overwrite files and programs if you have Thin client or PBS installed, because everything for these products are installed under to top-level PBS directory.

If the directory you select does not already exist, the installation program creates a new directory for you.

5. Next the following will display:

Now we will determine which products to install. Answer "Y" for each product you wish to install. You will be asked later for the license code and key for each product you selected. If you do not have these codes and keys the product will not execute, so you should only install products for which you have a license code and key.

```
Available products are:
  ACUCOBOL-GT Development System
  ACUCOBOL-GT Runtime
  AcuServer
  AcuConnect
  Acu4GL for Informix
  Acu4GL for Oracle
  Acu4GL for Sybase
  Acu4GL for DB2
  AcuSQL Precompiler
  AcuSQL Runtime
  AcuODBC Server
```

You are asked a series of "Do you want to install..." questions. Answer **Y** to only the question "Do you want to install AcuODBC Server" and select **N** to not install the other options. The AcuODBC Server question is last.

The installer then checks for product dependencies and automatically extracts all the files required to run the product selected. The following message will display:

```
Installation to /usr/acucobol62 has completed successfully.
```

6. When prompted, enter **Y** to confirm that the port and operating system are compatible.
7. Then enter the product code and key for the AcuODBC Server product you've installed. The screen displays something like this:

```
Activating license for AcuODBC Server:
Enter the product code []:
Enter the product key []:
```

Enter the code and keys without any spaces. Verify the product code and key after entry. Press **Enter** after each prompt.

8. Then a message like the following will display:  
Select the Enter key  
Creating ./bin/acuodbc.s.alc... Done...

If you Enter **N**, you will have to run the Activator executable later to install the license files.

## Install the PBS ODBC Scripts

Install the XFD files from the PBS Data Dictionary CD ROM.

- Copy **odbcunix.tar** file to a temp directory.
- Untar **odbcunix.tar**.
- From your temp directory, copy all of the \*.sh scripts to “/usr/acucobol62/bin”.
- From your temp directory, copy the “odbcscfg” file to root level “/etc” directory. Make it readable by everyone, but only writable for root.

## Configure the Acucorp ODBC Server Software

Create the “AcuAccess” file.

- Go to the “/usr/acucobol62/bin” directory.
- Run the “acu\_access.sh” script.  
Press ENTER to use the default path of “/etc/AcuAccess”.  
When it prompts for “Server Access File Options” choose, “5 – Exit” to exit.
- Change directories to /etc and change the permissions of the AcuAccess file as follows:  

```
chmod 700 AcuAccess*
```
- Now return to the “/usr/acucobol62/bin” directory.

Run the “acu\_access.sh” script.  
Press ENTER to use the default path of “/etc/AcuAccess”.  
Now select, “1 - Add a security record”.

As it prompts you, choose all the access record defaults. This will create an access record that allows full access by anyone to the ODBC Server.

- Refer to the “Security” section later in this document for more information on security.

Setup the “odbcscfg” file

- Go to the “/etc” directory and edit the “odbcscfg” file with your favorite editor.
- Determine your DSN directory. This directory will be the path to your PBS software plus “/ODBC/dsn”. For example, if your PBS software is located at “/usr/pbs” then your DSN directory would be “/usr/pbs/ODBC/dsn”.
- Edit the field, “DSN\_DIRECTORY=” to equal the location of your DSN directory. For example:

```
DSN_DIRECTORY=/usr/pbs/ODBC/dsn
```

- Save your changes.

### Install the PBS Data Dictionary XFD files for UNIX or Linux

The Data Dictionary (a compilation of files with an XFD extension) for Unix/Linux is located in a tar file on the PBS Data Dictionary CDROM.

Access to the PBS Financial and Distribution Series files is in the tar file is called “odbcxfd.tar”.

Access to the PBS Manufacturing Series files is in the tar file called “odbcmfgxfd.tar”.

To install the XFD files do the following:

- Copy the “odbcxfd.tar” or “odbcmfgxfd.tar” file to the *top-level PBS directory* and untar it. This will install the XFD files in a directory structure of “ODBC/ODBC00”.
- If you have companies other than company 00, then refer to the section “Installing the Data Dictionary for Multi-Companies” for instructions on creating the data dictionary for these companies.

### Create a DSN on the UNIX/Linux Server

You must create your DSN directory. This will be the directory that you entered in the “odbcsefg” file in a preceding step. You will need to do these steps for each PBS company you want to access via ODBC.

For example, if you entered “DSN\_DIRECTORY=/usr/pbs/ODBC/dsn”, then run the command:  

```
mkdir /usr/pbs/ODBC/dsn
```

From the “/usr/acucobol62/bin” directory, run the “srvconfig.sh” script.

The rest of this section takes you step by step through using the script. Do these steps for each company in PBS in which you want ODBC access.

Note: The steps you need are below, but if you find you need more information on using the script, please refer to the Acucorp help file. Select the AcuODBC user guide. Then find the section “9.5.1 srvconfig.sh the UNIX command-line environment”

1. The first prompt after running the script is the location of the DSN directory. Enter the full path to the dsn directory that you created. For example:

```
/usr/pbs/ODBC/dsn
```

2. Next it will prompt for, “Data Source Name.” This is the name of the DSN that you are creating. You can name the DSN anything you want. For example:

```
company00
```

or  
XYZ-company

This name will be used when you configure the workstation *Data source name* field. Enter a name that the users can relate to when running ODBC. If you have multiple companies on the system, you may want to give it a name that is similar to the company name.

3. The program will add the “.dsn” suffix to the name you enter.  
Answer “Y” when it asks if you want to create the DSN.

4. Next select “General” for the type of information you want to edit. Do this by typing the letter “G” and pressing the Enter key.

5. It will now prompt for the data dictionary directory. Select “A” to add a directory. Then enter the full path name to the data dictionary directory where you installed your Data Dictionary. For example:

```
/usr/pbs/ODBC/ODBC00
```

The usr/pbs part of the path may be different on your system. However, the ODBC/ODBC00 directory is fixed.

6. Select “Q” to quit adding the data dictionary path.

7. Now you will enter the paths to the PBS data directories. Do this by:

- Selecting “Add” by entering the letter “A” •••
- Enter the full path to the data directory. For example:  
    /usr/pbs/AR00
- Continue to “Add” until you have all your data paths entered, then select “Quit” when finished.

8. You will now be prompted for “Data File Extension”. Just press ENTER at this field. Nothing needs to be entered.

9. You will now be brought back to the main menu. Select ENTER to “Exit” and answer “Y” when it asks you “Save the data?” You are finished creating the DSN file.

If you need to edit your existing DSN or create new ones for additional PBS companies, run the “srvconfig.sh” script again. Then enter the path to your DSN directory. You will then see how it now displays the existing DSN(s), allowing you to edit, or add new ones. You add new ones by entering a DSN name that doesn’t already exist.

If you ever need to delete a DSN, delete the actual DSN file from the DSN directory.



## Start the ODBC Server

You start the ODBC server by running the “acu\_start.sh” script from the “/usr/acucobol62/bin” directory.

When you start the ODBC Server, it will report:

```
Opening '/dev/console' for error output
```

If you need to, you can move the ODBC Server start command to your Unix/Linux startup procedure. The startup command is:

```
/usr/acucobol62/bin/acuodbes -start -c /etc/odbcscfg -n 20222
```

You can also specify your own port number if you don't want to use the default of 20222.

To stop the ODBC Server, use the “acu\_stop.sh” script.

Any time you make a change to the AcuAccess settings, the DSN's, or the data dictionary, you must stop and restart the ODBC Server for the changes to take effect.

We have also supplied a trace file script that will start the ODBC Server in trace mode. This can be used when trying to debug problems. The script name is, “acu\_start\_trace.sh”. This script will run ODBC Server on port 20222 and place the trace information into “/usr/acucobol62/tracefile.txt”.

Another tool for debugging is the “netstat” command. You can use it after you start the server to insure that it is listening on the port. The command to use for port 20222 would be:

```
netstat -a | grep 20222
```

## Configure the AcuODBC Client for a Connection to the Server

This step assumes that you have already installed the ODBC software on the client workstation machine. If this has not been done, install the client following the Acucorp documentation.

This client configuration applies whether server is Windows, UNIX or Linux.

To do this installation, you must have the AcuCorp *extend 6* CD ROM labeled Version 6.2.0.1 for Microsoft® Windows® 98 SE, ME, 2000, 2003, NT, and XP and you must have a Product Codes and Keys. The installation instructions are found in the section of this document called [Installing AcuODBC](#).

On the client system:

Run the Windows ODBC configuration tool. This will probably be located at:



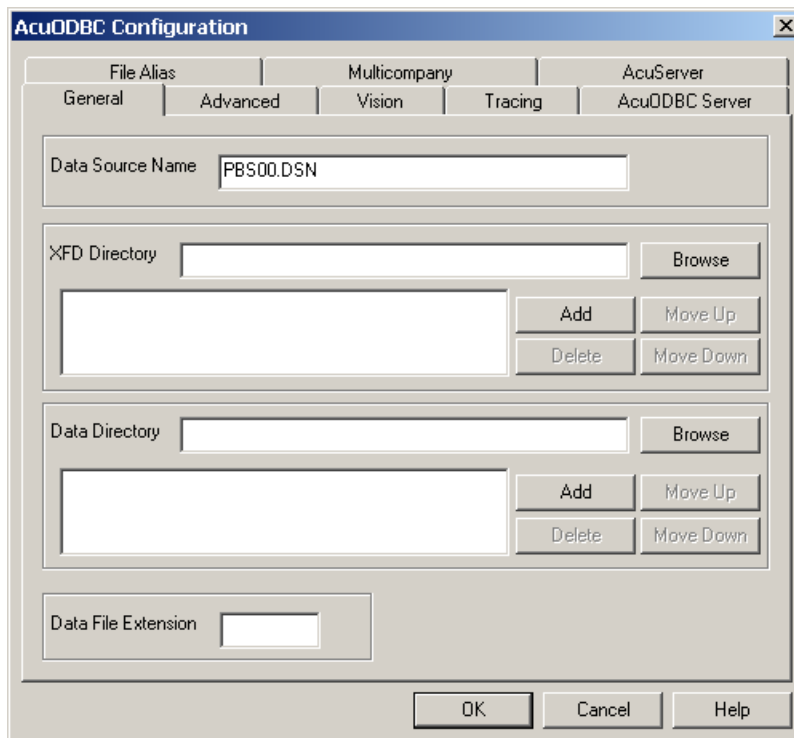
Start | Settings | Control Panel | Data Sources ODBC  
Or

Start | Settings | Control Panel | Administrative Tools | Data Sources (ODBC)

On either the “System DSN” or “User DSN” tab, click Add.

Select “AcuODBC Driver” from the list of driver names and click Finish.

On the General tab, enter the “Data Source Name” (DSN). This *must* match the DSN name as was entered on the Windows or UNIX/Linux AcuODBC server. For example, if you entered the DSN name on the server as “XYZ-Company” then enter the Data Source Name as “XYZ-Company”. Here is an example of this screen:



For Unix/Linux, you only enter the DSN name that you entered when creating the DSN. Keep it the same case and do not include the “.dsn” extension.

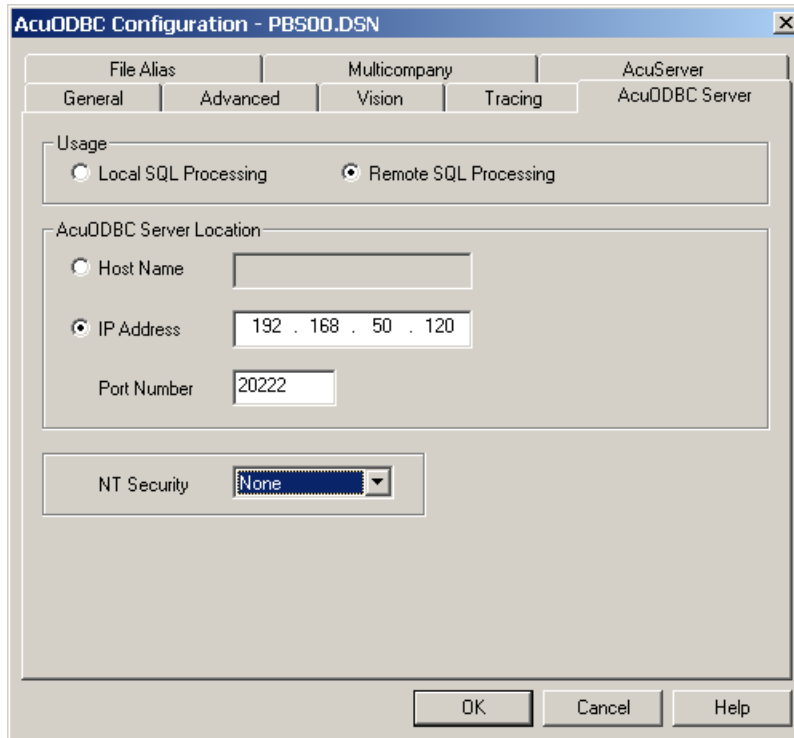
Now click on the “AcuODBC Server” tab and enter the following:

Select “Remote SQL Processing”. This will utilize the power of the ODBC server by having the ODBC server perform all the SQL processing.

Select “IP Address” and enter the IP address of your ODBC server.

If you used the port number 20222 when setting up your ODBC Server, then enter 20222 for the port number. If you used a different port number, enter that number here. *The values of both variables must match.* If you change the value in one location, you must also change it in the other.

The following is a screen shot of the entries for AcuODBC Server:



That completes the data entry. Click on OK to create your Windows DSN.

If your server is installed and configured for ODBC, then you are ready to access PBS data files.

## Test the AcuODBC Server/Client Installation

Once you have installed and configured both the server and the client you are now ready to access your PBS data from your Windows ODBC client.

To test this, use your ODBC compliant program of choice, such as Access<sup>™</sup>, Excel<sup>®</sup>, Crystal Reports<sup>®</sup>, etc. If you use Excel to access PBS via ODBC, you must have Microsoft<sup>®</sup> Query installed. The default install of Office 2000 and possibly other versions of office do not include Query.

### **Where to go from here?**

These instructions only cover the basics of getting the ODBC Server up and running.

For more information on using ODBC in your external applications, like Access and Excel, refer to the documentation provided with the application, study one of the many documents available for the application or get some training from a local provider.

# Appendix

## 1. Data Security and Limiting Access to PBS Data

There may be situations where you do not want all your ODBC users to have access to sensitive data such as Payroll or General Ledger information. The normal install of the data dictionary files puts them in PBS/ODBC/ODBC00 directory. If you run the multi-company ODBC utility they could be in other ODBCxx directories as well.

There are several ways to fix this. Here are a few suggestions.

- Remove the data dictionaries that access the sensitive data from the ODBC00 (or other companies) directory. For example, if you do not want users to access General Ledger (gl\_XXXXXX00.xfd) or Payroll (pr\_XXXXXX00.xfd) files, then remove the data dictionaries from the ODBC00 directory. If you have a user that needs access to these files, you could install the data dictionaries on the user's local drive. When you configure their workstation use the local data dictionaries and not the data dictionaries on the server. However, this would not be a good solution if the user's drive is shared because the data dictionaries could then be configured and accessed by another user.
- Separate the data dictionaries that access sensitive data and put them in a different server directory that is protected. For example, you could create a directory called ODBC00PR and place the Payroll data dictionary files in this directory. The system administrator would have to put restrictions on the ODBC00PR directory so that it would only be accessed by the eligible users.

Also, only allow fully qualified users access to the PBS Data Dictionary installation CD ROM.

The multi-company ODBC utility only works when the data dictionary files are in the /ODBC/ODBC00 directory under top-level PBS. If you need to run the utility and you have moved some or all of xx\_XXXXXX00.xfd files to another directory or drive location, you will have to move them back to run the utility.

## **2. Support**

If help is needed to resolve any issues, please contact your PBS supplier or our support department at: (800) 969-7900 ext. 124 or email [support@pass-port.com](mailto:support@pass-port.com).

In addition, if you discover anything that will help improve this document, please let us know.

**Passport Software, Inc.**  
3801 West Lake Avenue  
Suite 301  
Glenview, IL 60026  
800-969-7900  
<http://www.pass-port.com/>

### **3. ODBC Performance**

ODBC performance can vary per system and data files being accessed. There are several ways you may address performance and speed:

1. Optimize your queries in Access by using Import instead of Link Tables, or use make-table queries to create static copies of large data tables. This will allow you to work with a localized data set while you are running queries, but the disadvantage here is that you will have to re-import your data every time you wish to work with it.
2. Improve your network performance by upgrading your network hardware, such as switched hubs, gigabit Ethernet, and faster workstation computers. This option provides a limited increase in bandwidth, which should help performance and speed.
3. Install the AcuODBC Server software on your Passport Business Solutions server. With AcuODBC server, all queries and transactions take place on the server processor instead of the local machine, which improves performance significantly. This third option will provide the most performance gain, allowing your server to handle all ODBC requests on the server side while still accessing your data when on your workstation computer.