

# User Manual

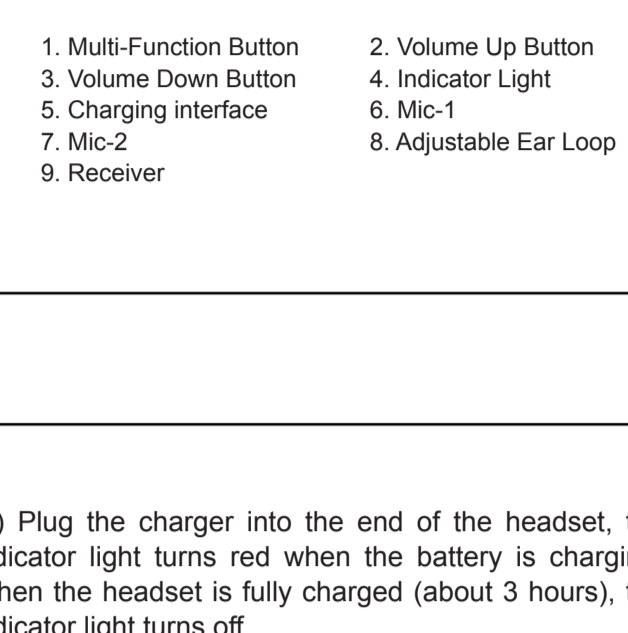
## GBH909

### Bluetooth headset

## BEFORE YOU BEGIN

Before using this product, please take a moment to familiarize yourself with your new GBH909 headset.

### Identifying Parts



- 1. Multi-Function Button
- 2. Volume Up Button
- 3. Volume Down Button
- 4. Indicator Light
- 5. Charging interface
- 6. Mic-1
- 7. Mic-2
- 8. Adjustable Ear Loop
- 9. Receiver

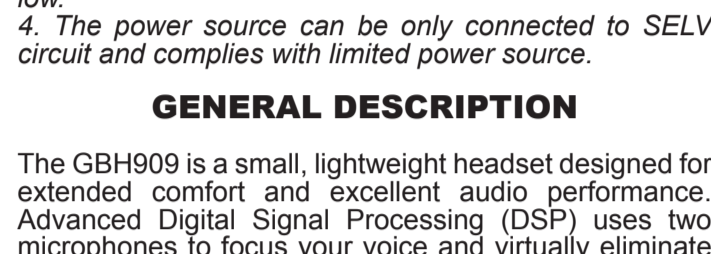
## PACKAGE CONTENTS

1. GBH909 headset unit
2. Adjustable Earloop
3. Small, medium and large ear tips
4. USB Cable
5. AC Power Adapter
6. User guide

## CHARGE

The headset has a built-in battery. You can charge the headset by using the AC power adapter or USB charging cable through the computer. Before using the headset, you must first charge it. Indicator light is steady red when battery is charging.

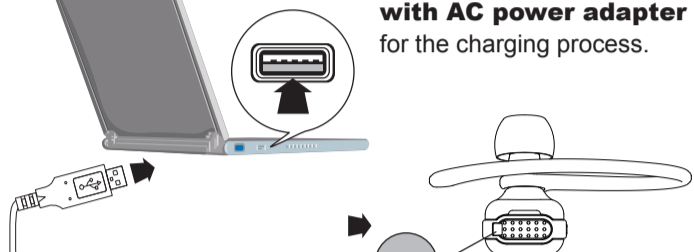
### 1. Charging with AC power adapter



(1) Verify the headset is powered off.

### 2. Charging with the computer (USB charging cable is an optional accessory)

Plug one end of the USB charging cable into the computer USB port, and plug another end into the end of the headset.



Please refer to **1. Charging with AC power adapter** for the charging process.

- Notes:
1. The headset cannot be used while charging. For the optimal performance, please don't use the headset during charging.
  2. For optimal performance, make sure that the headset

2. Plug the charger into the end of the headset, the indicator light turns red when the battery is charging. When the headset is fully charged (about 3 hours), the indicator light turns off.
3. Disconnect the charger.

### 3. Charging circuit would not work if you charge the headset only after a very short time using. Please go on using the headset and do not recharge it until the battery gets low.

4. The power source can be only connected to SELV circuit and complies with limited power source.

## GENERAL DESCRIPTION

The GBH909 is a small, lightweight headset designed for extended comfort and excellent audio performance. Advanced Digital Signal Processing (DSP) uses two microphones to focus your voice and virtually eliminate background noise from your call. Perfect for high-noise environments such as restaurants and airport terminals. With DSP technology, you can have the confidence that you will always be heard clearly.

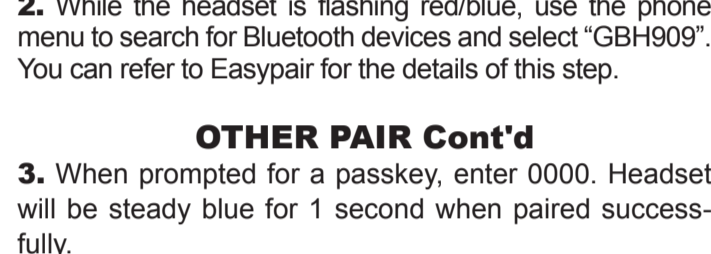
## PAIR

This headset comes with EASYPAIR feature so pairing with your Bluetooth phone is even easier.

### EASYPAIR

Follow the instructions below to pair your phone and the headset for the first time.

### PAIRING FIRST DEVICE



### 1. Prepare headset-Make the headset enter pairing mode

Begin with headset turned off. Turn headset on (press Multi-Function button for 3 seconds), it will automatically go into pairing mode, flashing red and blue.

### 2. Prepare Phone-Turn on Bluetooth

Scroll to the Bluetooth menu in your phone and search for active devices. (Refer to the phone's user manual for details) And when the search completes, a list of devices is displayed. (The screen examples here are from a Nokia 6230)

### 3. Pairing

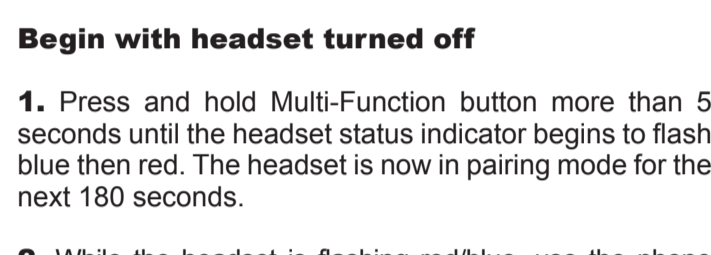
Select GBH909 from the list. When prompted for a passkey, enter the default passkey (0000). When successfully paired, the red/blue LED on the headset changes to steady blue for 1 second. It is now powered on and ready to use.

### FIRST PAIR Cont'd

Note: Normally you only need to pair the headset and handset once. If headset has been previously paired with another device, follow pairing instructions below.

### PAIRING OTHER DEVICES

If headset has ever paired with another device before, please follow these instructions for pairing.



### Begin with headset turned off

1. Press and hold Multi-Function button more than 5 seconds until the headset status indicator begins to flash blue then red. The headset is now in pairing mode for the next 180 seconds.
2. While the headset is flashing red/blue, use the phone menu to search for Bluetooth devices and select "GBH909". You can refer to EasyPair for the details of this step.

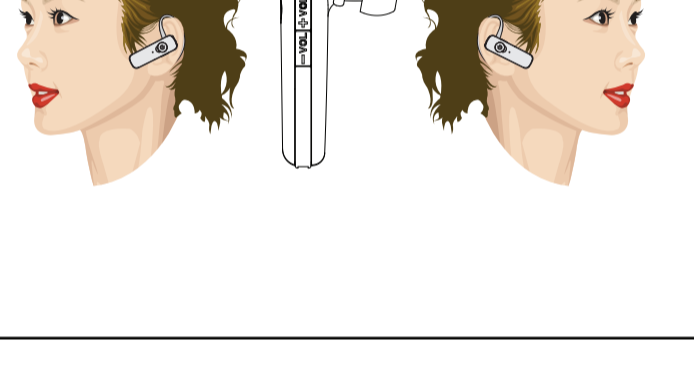
### OTHER PAIR Cont'd

3. When prompted for a passkey, enter 0000. Headset will be steady blue for 1 second when paired successfully.

Note:

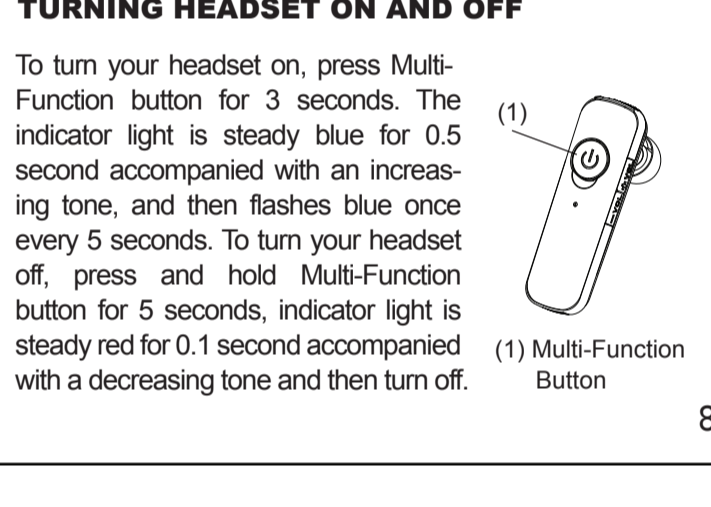
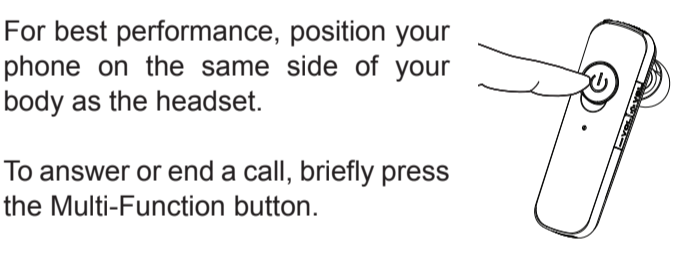
1. The headset can pair to multiple Bluetooth devices, but will only connect to one device at a time.
2. If the headset is disconnected from the Bluetooth device, you can re-connect it by briefly pressing Multi-Function button.

## ADJUSTING FIT



NOTE: the headset can be worn without the earloop.

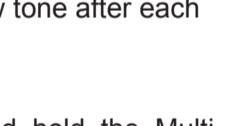
You can mount the ear loop in different way to accommodate right/left wearing.



## USING YOUR HEADSET

### TURNING HEADSET ON AND OFF

To turn your headset on, press Multi-Function button for 3 seconds. The indicator light is steady blue for 0.5 second accompanied with an increasing tone, and then flashes blue once every 5 seconds. To turn your headset off, press and hold Multi-Function button for 5 seconds, indicator light is steady red for 0.1 second accompanied with a decreasing tone and then turn off.



### ANSWERING/ENDING/MAKING CALLS

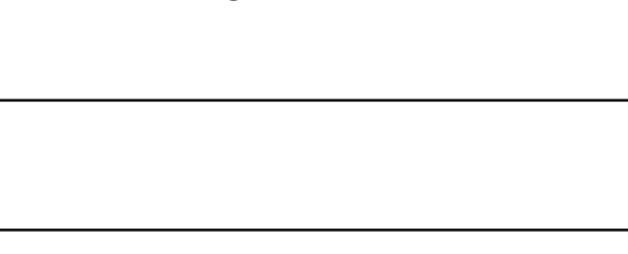
For best performance, position your phone on the same side of your body as the headset.



To answer or end a call, briefly press the Multi-Function button.

To make a call, enter number on your phone, press send, and the call is automatically transferred to headset; no need to press Multi-Function button.

### ADJUSTING THE VOLUME



Briefly press Volume up or Volume down button for incremental volume steps. You can also press and hold volume Up/Down button to adjust the volume continuously. You will hear a high tone at the volume limit.

### DISABLE/ENABLE LED STANDBY AND ON-LINE INDICATION

When the headset is connected, press and hold Volume Down button for 10 seconds, and then LED will only light for low battery, Pairing, etc...but not for standby or in-use modes. Press and hold Volume Up button for 10 seconds, and then LED is enabled again.

### ADDITIONAL FEATURES

#### Redial Last number

To activate last number redial, double press the Multi-Function button. You will hear two low tone after each double key press.

#### Rejecting a Call

When a call is incoming, press and hold the Multi-Function button until phone stops ringing.

#### Switching a Call from Headset to Phone

To switch an active call from your phone to your headset, press and hold the Multi-Function button until the call is available in the headset.

#### Switching a Call from Phone to Headset

To switch an active call from your headset to your phone, press and hold the Multi-Function button until the call is available in the handset.

### Reset the Headset

Press and hold the Multi-Function button for more than 10 seconds, and then the headset can be reset.

### Erasing Paring Information

Press the Volume up and volume down button synchronously for 3 seconds, and then the pairing information can be erased completely.

### Turn on/off DSP feature

Press the Multi-Function and volume up button synchronously for 3 seconds, and then DSP feature algorithm is turned on. Press the Multi-Function and volume down button synchronously for 3 seconds, and then DSP feature algorithm is turned off.

## INDICATOR LIGHTS

### With the Charger Plugged In

Headset Status	Indicator light
Charging (headset is powered off)	Steady Red
Charging complete	Off

Headset Status	Indicator light
Power on	Steady Blue for 0.5 second
Power off	Steady Red for 0.5 second and goes off
Pairing mode	Blue/Red flashes
Standby	Blue flashes. Repeat (0.2 second on 5 seconds off)
Ongoing call	Blue flashes. Repeat (0.5 second on 2 seconds off)
Successful pairing	Steady Blue for 1 second
Unsuccessful pairing	Steady Red for 1 second

## TROUBLESHOOTING

### 1. My headset can not discover my phone.

Make sure your phone has the Bluetooth Voice Gateway function built in.

Make sure the Bluetooth feature of your phone has turned on and you have records with the accurate pairing steps.

### 2. My headset can not work well with my phone.

Make sure the headset has turned on. Press the Multi-Function button for 3 seconds until you hear a increasing tone or see the indicator light steady blue for 0.5 second to turn the headset on.

## PRODUCT SPECIFICATION

Talk Time	Up to 4 hours
Standby Time	160 hours
Charge Time	3 hours
Working Range	Bluetooth standard 33 feet (10 meters)
Bluetooth Version	Bluetooth 2.0
Supported Bluetooth profile	Headset Hands-free
Weight	10 g
Dimension	53 * 17 * 10 mm (length * width * height)
Storage and Usage Temperature	50 °F-104 °F (10 °C-40 °C)

### GFM Guarantee

If you are not totally satisfied with this GFM product, you may return it to any Meijer store for a full refund within 6 months (180 days) of purchase when accompanied by a receipt.

For customer support please call (866) 845-9436 or go to www.gfmproducts.com

Dist. by Wholesale Merchandisers, Inc., 2929 Walker, NW, Grand Rapids, MI 49544 Made in China

### FCC part 15.21

Warning: Changes or modifications to this unit not expressly approved by the party responsible for compliance could void the user's authority to operate the equipment.

### FCC part 15.105

**NOTE:** This equipment has been tested and found to comply with the limits for a Class B digital device, pursuant to Part 15 of the FCC Rules. These limits are designed to provide reasonable protection against harmful interference in a residential installation. This equipment generates, uses, and can radiate radio frequency energy and, if not installed and used in accordance with the instructions, may cause harmful interference to radio communications. However, there is no guarantee that interference will not occur in a particular installation. If this equipment does cause harmful interference to radio or television reception, which can be determined by turning the equipment off and on, the user is encouraged to try to correct the interference by one or more of the following measures:

- Reorient or relocate the receiving antenna.
- Increase the separation between the equipment and receiver.
- Connect the equipment into an outlet on a circuit different from that to which the receiver is connected.
- Consult the dealer or an experienced radio TV technician for help.

Make sure your headset is not out of the working range. Move the headset closer to the phone or Bluetooth device.

Make sure your headset battery is not drained. Charge your battery using the AC power adapter supplied.

The listening volume is too low. Press the Volume Up to increase the sound heard in the headset.