

C600BCVFIR SERIES 600 Line 150' or 300' IR Bullet Cameras



TDN, OSD, DNR, 2.8-11mm w/150' IR or 6-50mm w/300' IR Models

Series Includes Models:

C600BCVFIR150

(2.8-11mm, 150' IR Range)

C600BCVFIR300

(6-50mm, 300' IR Range)



*Camera shown is
C600BCVFIR150*

Good Looks, Built Tough.



*Camera shown is
C600BCVFIR300*

The ARM BCFVIR series bullet cameras are built to survive some of the toughest outdoor conditions. The zinc-alloy housing can withstand 500lbs of direct force and stay on target. Toughness is not their only asset, both 600 line models are equipped with either a 2.8-11mm or 6-50mm aspherical lenses with mechanical IR cut filters. High quality images start with a great lens, aspherical lenses create brighter, clearer pictures and the built in ICR filter generates sharper night-time images when switching to B/W mode. Both models use an Intuitive-IR feature which automatically dims the IR LED's when objects move in close range of the camera to prevent unwanted over exposure. The cameras dual voltage design can operate using either 12VDC or 24VAC power and the cable management mount prohibits easy access to power and video cables. The ARM C600BCVFIR series is feature-packed with:

- 600 Lines of Resolution
- On Screen Display
- Digital Noise Reduction
- Aspherical 2.8-11mm or 6-50mm Lens Options
- Mechanical IR Cut Filters
- Intuitive-IR Technology
- 150' or 300' IR Range
- Video Test Connector & Cable
- Dual Voltage Power
- Cable Management Mount



www.armelectronics.com ■ 1. 888.771.4544 ■ sales@armelectronics.com

C600BCVFIR SERIES 600 Line 150' or 300' IR Bullet Cameras



FEATURES & BENEFITS



HIGH PERFORMANCE

600 Lines of Resolution

State of the art imaging device creates clear, high quality images.

Aspherical Lens Technology

High quality images start with a great lens. Aspherical lenses create brighter and clearer pictures by focusing more light onto the camera's image sensor.

150 or 300' IR Range

The built-in infrared LED's allow you to see objects as far as 300' away in complete darkness.

Intuitive-IR Technology

Automatically dims the IR LED's when objects move in close range of the camera to prevent unwanted overexposure.

500LB of Force Mount

Extremely tough mounting system can withstand 500lbs of force and still keep the camera on target.

CONVENIENCE

Built-In On Screen Display (OSD)

Quickly and easily configure all camera settings using the built-in On Screen Display control on the bottom of the camera.

Multiple Camera Models

Choose between a 150' IR range with a wide angle 2.8-11mm or 300' IR range with a long range 6-50mm lens.

Video Test Connector

Save time by knowing your camera's field of view is set and focused properly before leaving the camera location.

Dual Voltage Power

These cameras operate efficiently on both 12VDC and 24VAC power runs.

TOTAL SECURITY

Day/Night Operation

Built-in photo cells sense reducing light levels, activate IR LED's and switch cameras from color to B/W mode for improved night-time performance.

Super Tough Housing

The high-tech, zinc-alloy housing is designed for durability and protects the camera from most attacks.

Heavy Duty Cable-Management Mount

Heavy duty mount keeps your camera on target and a pass-through cable design eliminates the chance of exposed wires being cut.

3-Axis Mount

Perfect positioning on any wall or ceiling application is easy for these cameras with the included 3-axis mount.

IP66 Weather Proof Rating

Impervious to dust and strong jets of water these cameras operate perfectly, rain or shine.



C600BCVFIR SERIES 600 Line 150' or 300' IR Bullet Cameras

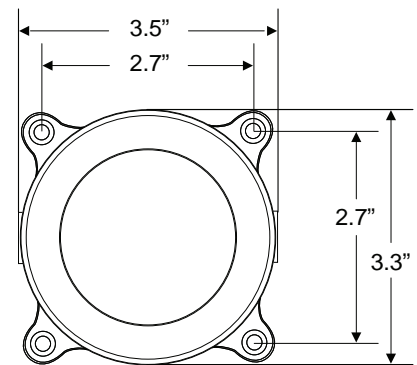
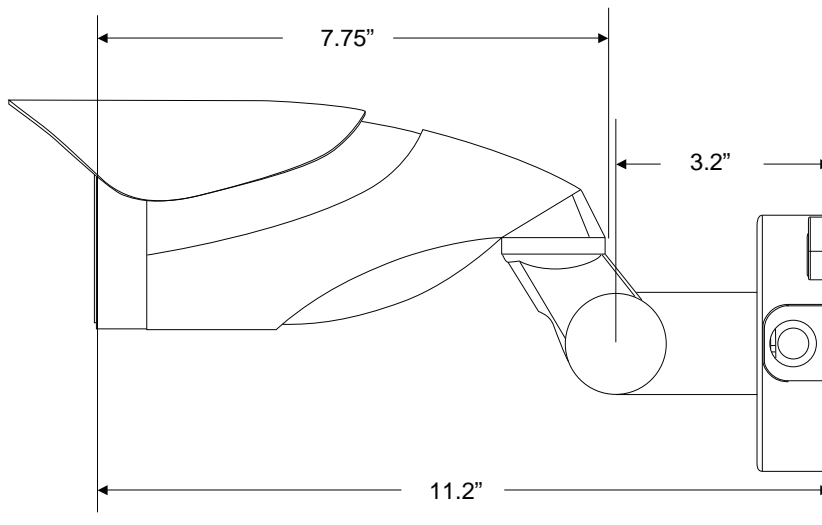


MODEL NUMBERS | LINE ART | ACCESSORIES



I Need...	C600BCVFIR150	C600BCVFIR300
HIGH RESOLUTION	✓	✓
ON SCREEN DISPLAY	✓	✓
DIGITAL NOISE REDUCTION	✓	✓
DAY/NIGHT IMAGES	✓	✓
LENS	2.8-11mm	6-50mm
INTUITIVE INFRARED LED'S	150' RANGE	300' RANGE
DUAL VOLTAGE	✓	✓
CABLE MANAGEMENT	✓	✓

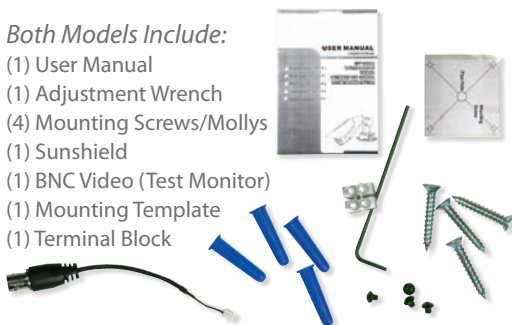
LINE ART – C600BCVFIR SERIES



INCLUDED ACCESSORIES

Both Models Include:

- (1) User Manual
- (1) Adjustment Wrench
- (4) Mounting Screws/Mollies
- (1) Sunshield
- (1) BNC Video (Test Monitor)
- (1) Mounting Template
- (1) Terminal Block



RECOMMENDED ACCESSORIES



CBL3BNC
3' BNC Cable
Also Available in
6', 25', 50' and 100'



VC4P
Push Terminal
Mini Balun
w/4" BNC Cord



CSP1
5AMP Max Current
Coaxial Surge
Protector



LCD1920HG
19" LCD Monitor
Also Available
in 15" and 17"



www.armelectronics.com ■ 1. 888.771.4544 ■ sales@armelectronics.com

C600BCVFIR SERIES 600 Line 150' or 300' IR Bullet Cameras



TECHNICAL SPECIFICATIONS

Model No.	C600BCVFIR150	C600BCVFIR300
Imaging Device	1/3' SONY Super HAD II CCD	
Resolution	600 TV Lines	
TV System	NTSC	
Effective Pixels	768 (H) X 494 (V)	
Lens	2.8-11mm Varifocal	6-50mm
Mechanical IR Cut Filter	Yes	
IR LED Range	150'	300'
IR LED Count	18 Pieces	14 Pieces
IR LED Wavelength	850nm	
Maximum Aperture	F1.2~2.0	
Scanning System	2:1 Interlaced	
Sync System	Internal Negative Sync	
Video Output	1.0Vp-p 750HM Composite BNC	
Minimum Illumination	0.1 Lux / 0.0 Lux (IR LED On)	
S/N Ratio	More than 48db	
Gamma Characteristics	0.45	
Electronic Shutter Speed	AUTO, FLK, 1-60 ~ 1/100,000	
OSD (On Screen Display)	Yes (On Camera Bottom)	
BLC (Backlight Compensation)	OFF / BLC / HLC	
AGC Automatic Gain Control	LOW / MIDDLE / HIGH / OFF	
White Balance	ATW1, ATW2, AWC-SET, MANUAL (INDOOR-OUTDOOR)	
Day-Night	COLOR / BW / AUTO	
DNR (Digital Noise Reduction)	ON / OFF	
D-WDR (Digital Wide Dynamic)	ON / OFF (Adjustable 1~63)	
Motion Detection	ON / OFF 4 - Zones Programmable	
Privacy Masking	ON / OFF 4-Zones Programmable	
Sharpness	(Adjustable 1~31)	
Power Requirement	12VDC/24VAC	
Power Consumption	600mA	
Operating Temperature	-14°F ~ 122°F	
Weight	1.9 Lb.	
Housing / Color	Aluminum (Grey)	
Dimension	13.8" x 3.9" x 5.5"	
Weatherproof Rating	IP66	

* All specifications subject to change without notice for quality improvement

