

USB-Serial Cable User Guide

1. [Product Features](#)
2. [System Requirements](#)
3. [Driver Installation \(WIN2000\)](#)
4. [Changes COM Port](#)
5. [Setting Up the RS232 Serial Device](#)

Product Features

- USB Specification Rev. 1.1 compliant
- Support the RS232 Serial interface
- Over 1Mbps data transfer rate
- Support remote wake-up and power management

System Requirements

- IBM PC 486DX4-100 MHz CPU or higher or compatible system
- Available USB port
- CD-ROM drive
- Windows 2000

Driver Installation (WIN2000)

Follow the steps below to install Window 2000 driver of USB-Serial cable:

1. Power on your computer and make sure that the USB port is enabled and working properly.
2. During installation , please don't link USB-Serial cable with your computer .
3. Double click ' PL2303_Prolific setup.exe ' , then it will start install



4. After installation , click ' OK '
5. Plug in the USB-Serial cable into the USB port and run the **Found New Hardware Wizard** to assist you in setting up the new device. Click **Next** to continue.



6. click Next to continue. Select the “ **Search for a suitable driver for my device(recommand)** “



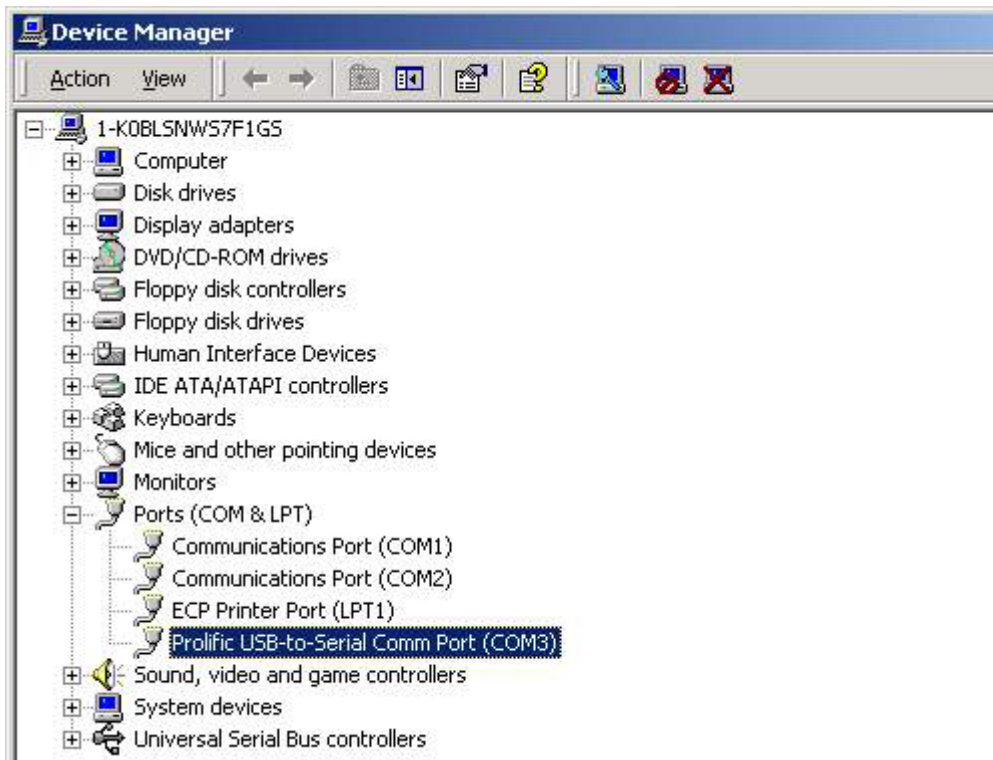
7. Windows will detect the driver and Click Next to continue installation.



8. Click Finish to continue and let Windows copy the needed files to your hard disk.



9. You can to check the Device Manager and see the Prolific USB to Serial Comm Port)



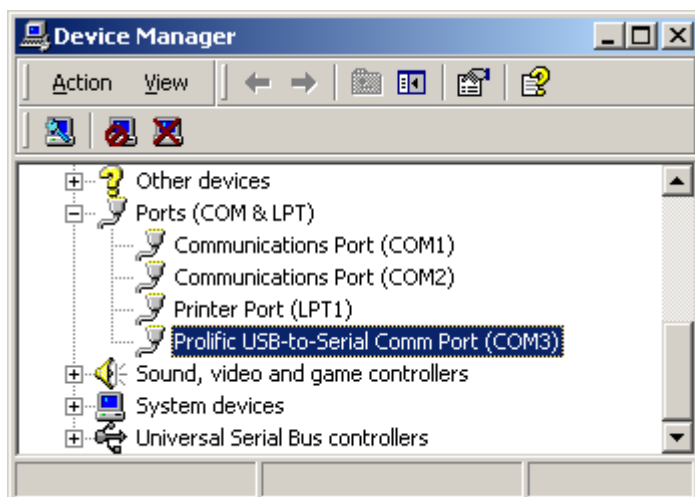
Changes COM Port



Under Windows 98SE , you can change the COM Port via **setcom.exe**  software

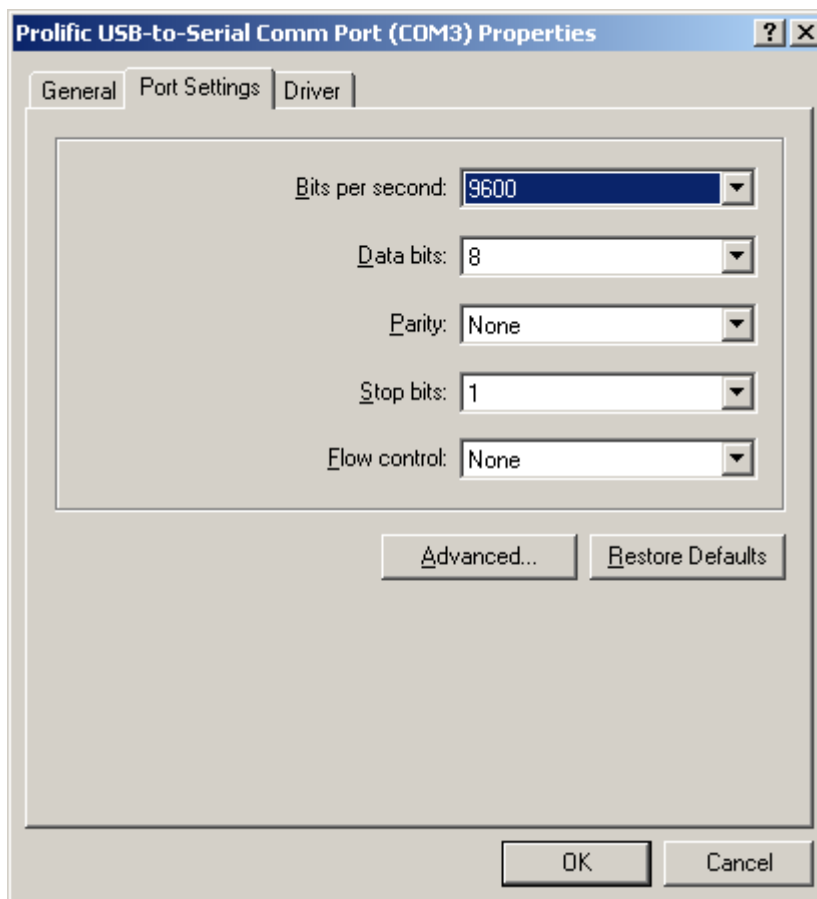
7. Under Windows Me 、 Windows 2000 、 Windows XP , please kindly following the steps as below . :

(1) Please click on the **Device Manager\ Devices by connection \ ports (COM & LPT)**. (images 1)



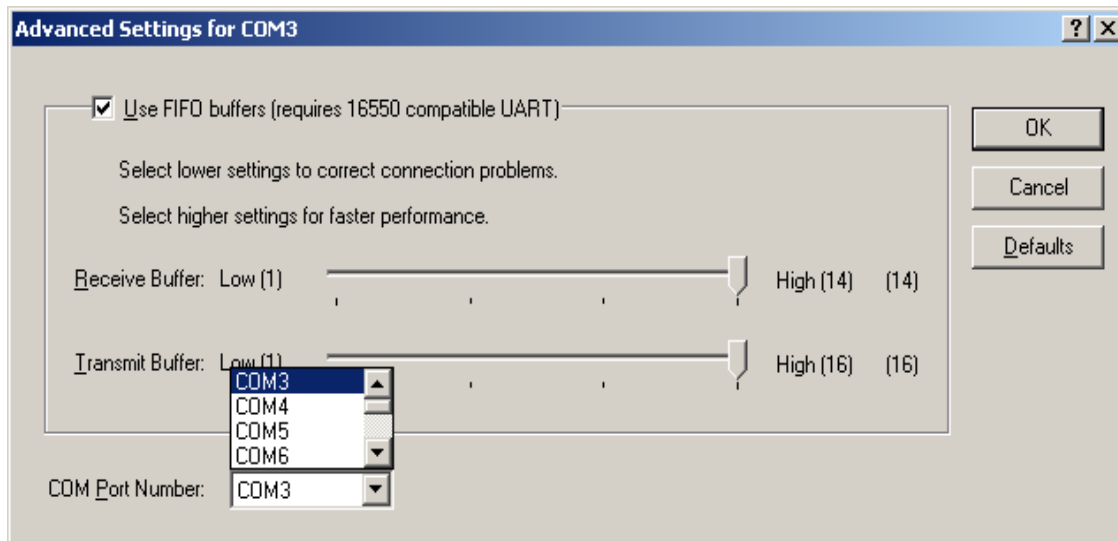
(images 1)

(2) Doubly click on **“Prolific USB-to- serial Comm port(COM3)”** .And it could go to ‘ **properties**’ .
(images 2)



(images 2)

(3) Please choose "**Port Settings**", and then click on "**Advanced**". Please kindly choose the needed com, and click on "**ok**". (images 3)



(images 3)

Notice:

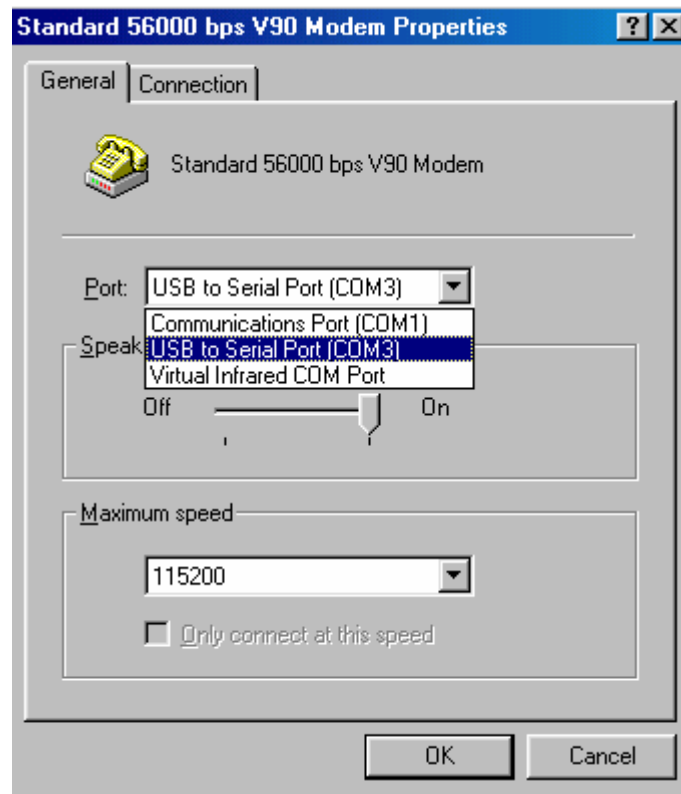
If the Modem could not link with the new port, and run smoothly when changed the port, please kindly unload Modem, and re-install it.

When Changing the port, the peripheral equipment could not shift to the new port, and run smoothly. Under this situation, please kindly unload the equipment and install again.

Setting Up the RS232 Serial Device

Follow the steps below to connect your RS232 Serial Device (ie: Modem) to the USB port of your PC:

1. Turn off your Modem. Plug the DB 9 connector of the USB-Serial cable into your Modem. Turn on the Modem afterwards.
2. Turn on your computer and plug in the USB connector of the USB-Serial cable into the USB port.
3. If you have already installed a Modem device before, click Start, Settings, Modems. Open Modems Properties, select the Modem, click Properties. In General tab, please change the **Port** value to **USB to Serial Port (COM3)**.
4. After finishing these processes, you can use USB to Serial Bridge Cable to connect RS232 Serial 56K FAX Modem and execute the Dial-up function to connect Internet, and send the FAX with the FAX software(ie: Microsoft FAX) properly.



Q: How do I uninstall the PL-2303 MAC X driver?

A: 1. Open "Applications-> Utilities-> Terminal". You need to create ID & password first on NetInfo Manager.

2. Login to root user and type "su" and enter password.

3. Type "cd /System/Library/Extensions" to go to the "Extensions" folder.

4. Unload the driver (if it had been loaded) by typing "kextunload PL2303.kext" or "kextunload ProlificUsbSerial.kext".

5. Remove the driver by typing "rm -r PL2303.kext" or "rm -r ProlificUsbSerial.kext".

User's Manual

USB-Serial Converter

MAC DRIVER

1. [Overview](#)
2. [Product Features](#)
3. [System Requirements](#)
4. [Driver Installation](#)

Overview

Congratulations on your purchase of the wiretek USB-Serial Converter. This device provides a simple and easy way to connect Universal Serial Bus (USB) and Serial port interface.

With the advantage of USB port, users have the capability to utilize the peripheral with serial port interface in an easy to use environment such as plug and play & hot swap function. This Converter is designed for ideal connections to Cellular Phone, Digital Camera, Modems or ISDN terminal adapter with over 1Mbps data transfer rate.

The USB-Serial Converter and software drivers are capable of providing a no-firmware-change feature that enable USB interface to be transparent to serial port peripherals with minimum modifications.

Product Features

- USB Specification Rev. 1.1 compliant
- Support the RS232 Serial interface
- Over 1Mbps data transfer rate
- Support remote wake-up and power management

System Requirements

- Power G3 OR G4 CPU or higher or compatible system
- Available USB port
- CD-ROM drive
- Mac OS 8.6 or Higher

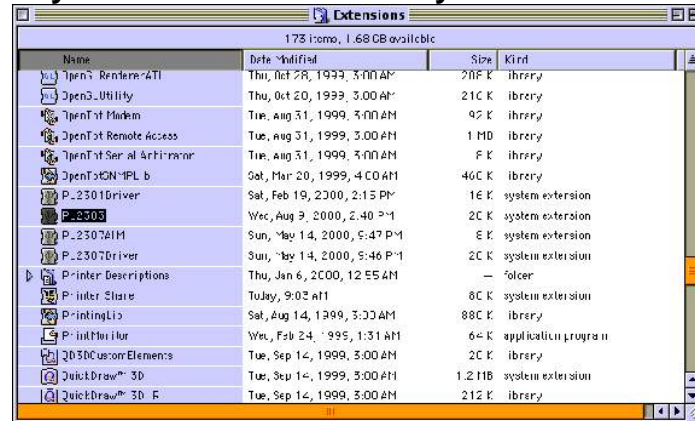
Driver Installation

Follow the steps below to install driver of USB-Serial Converter:

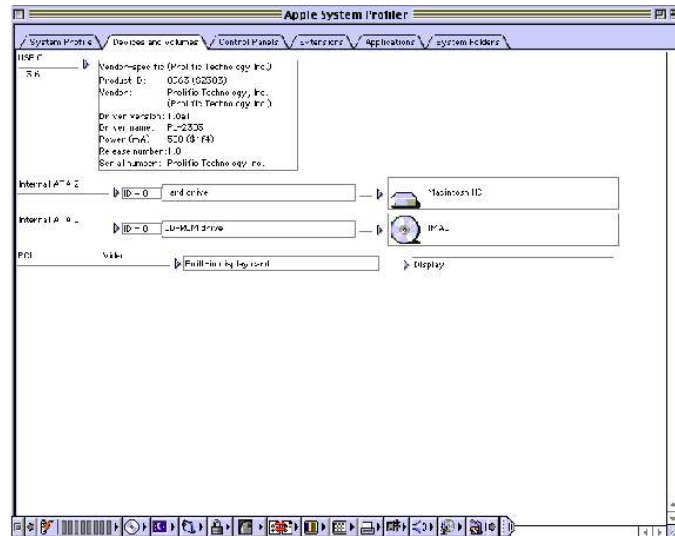
1. Power on your computer and make sure that the USB port is enabled and working properly.
2. Insert the USB-Serial Converter software driver into the CD-ROM drive.
3. Plug in the USB-Serial adapter into the USB port and run the pl2303.SIT from the CD-ROM, it will auto run the program and appear a **PL-2303 system extensions**.



4. Copy the **PL-2303** system extensions to the **system Folder-Extensions**.



4.To make sure that your computer can use the device correctly, you have to check the **Apple System Profiler-Device and Volumes**.It will show the USB Device.



How driver works with Modem on Linux RedHat 7.3

I am believed that you already have PL-2303X/H Linux driver source, and you also know how to compile it in Linux, so I only explain how to link device with our driver.

In Makefile file, we had set a command to insert driver into Kernel, so you can type "make inst" to insert driver, after that, please type "dmesg" command then click enter, you will see messages appeared on screen, please force on the least line of message, "usbserial.c"

The Prolific USB Serial Adapter converter now attached to ttyUSB0 (orusb/tts/0 for devfs).

It means the virtue COM port is in ttyUSB0, so if you want to use this port, you need to use "ln" command to hard link with device, for example: we are use PL-2303X/H to connect with modem (or ttyS0), so we need to type "ln -b /dev/ttyUSB0 /dev/ttyS0" then click enter, if nothing happen and the screen appear "[root@localhost / xxxxx]#", then link operation is successfully, next, you need to execute

Start→Programs→System→Internet configuration wizard to setup modem and it port,

1. On "Select Device Type" dialog box, please chose "Modem Connection", please ignore the "can't not find modem" message and then click next, on this dialog box, and on "Modem Device" item to selects "/dev/ttyS0", click next.
2. On "Selection Provider" dialog box, please fill in the dial number, account and password.
3. Click "Finish" button to the next step.
4. On the next dialog box, all setting information are in this box, please make sure all the setting as you want.
5. Click "Apply" and "Close" to leave setup wizard.
6. To execute Start→Applets→Network→Modem Lights, a small icon will appear on the left-bottom of panel bar, when you want you connect internet, you can click the green light to do dial-up, after that, you can launch internet application program to browser internet.
7. To click Red light to disconnect dial-up.