

INSTALLATION MANUAL

Version 1.00 - March 2014



Epsio.FX



Copyright

EVS Broadcast Equipment SA– Copyright © 2014. All rights reserved.

Disclaimer

The information in this manual is furnished for informational use only and subject to change without notice. While every effort has been made to ensure that the information contained in this user manual is accurate, up-to-date and reliable, EVS Broadcast Equipment cannot be held responsible for inaccuracies or errors that may appear in this publication.

Improvement Requests

Your comments will help us improve the quality of the user documentation. Do not hesitate to send improvement requests, or report any error or inaccuracy on this user manual by e-mail to doc@evs.com.

Regional Contacts

The address and phone number of the EVS headquarters are usually mentioned in the Help > About menu in the user interface.

You will find the full list of addresses and phone numbers of local offices either at the end of this user manual (for manuals on hardware products) or at the following page on the EVS website: <http://www.evs.com/contacts>.

User Manuals on EVS Website

The latest version of the user manual, if any, and other user manuals on EVS products can be found on the EVS download center, on the following webpage: <http://www.evs.com/downloadcenter>.



Table of Contents

TABLE OF CONTENTS III

1. INTRODUCTION 1

1.1. Product Overview 1

1.2. Requirements and Limitations 2

2. INSTALLATION 3

2.1. Installation Overview 3

2.2. Installing Epsio FX on the Epsio Server 3

2.3. Activating the Epsio FX License in XSecure 8

2.4. Setting up an FTP Server 9

2.5. Installing LSM Connect on the LSM Tablet 13

1. Introduction

1.1. Product Overview

Description

Epsio FX is a software that allows users to apply video effects to playlists stored on the EVS server. The effects can be applied on playlist transitions or playlist elements.

Working in conjunction with the Multicam LSM and the LSM Connect applications, Epsio FX gives the operator a centralized interface to manage video effects. This solution eliminates complex post-production processes and allows to deliver special and sophisticated effects in a twinkling.

Setup

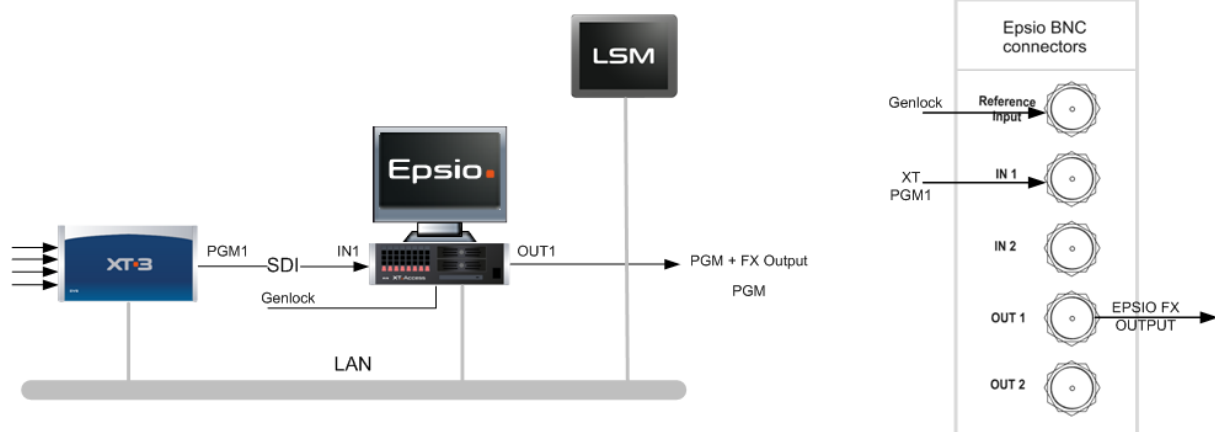
Epsio FX is based on a client-server architecture in which:

- The Epsio FX server application is installed on the Epsio server.
- The Epsio FX client is the LSM Connect application installed on the LSM tablet.

The LSM Connect application communicates with the Epsio server and the EVS server through an Ethernet connection. The Epsio server gets information on the EVS server via LSM Connect.

The effects are centralized, defined and managed by the Epsio FX server application.

The effects are applied to playlists stored on the EVS server via the Epsio FX client built in the LSM Connect application.



1.2. Requirements and Limitations

Hardware and Software Requirements

EVS Server

Hardware: XT3 server

Software: Multicam version 11.02 or 12.02 (or higher)

LSM Tablet

Software: LSM Connection version 2.00 or higher

Epsio FX

OS: Windows 7

Graphic Board: NVIDIA QUADRO FX 2000



Note

The old Epsio hardware is not supported.

Limitations

- The Epsio server must be cabled to PGM 1, and therefore only works with PGM1.
- 1080p and 4K formats are not supported.
- There is a 6-frame delay between Epsio and EVS server outputs.
- The number of images the operator can load depends on the memory size of the NVIDIA board.
- Playlists in loop are not managed.
- Due to the previous limitation, a transition effect defined on the first playlist element will not be applied.
- Only local playlists are managed.
- When two playlists with effects are merged, the effects are lost.
- Half the duration of the .tga image sequence used as transition overlays may not exceed the duration of the next playlist element.

2. Installation

2.1. Installation Overview

Setting up Epsio FX requires the following installation steps:

On the Epsio FX Server:

1. [Installing Epsio FX](#)
2. [Activating the XSecure license](#)
3. [Setting up an FTP server](#)

On the LSM Tablet:

1. [Checking LSM Connect version](#)

When both Epsio FX and LSM Connect are installed respectively on the Epsio server, and on the LSM tablet, you need to configure your setup. To this end, refer to the Epsio user manual.



Note

When you purchase a new Epsio server to be used in an Epsio FX workflow, it is completely installed and configured before delivery with the current version.

2.2. Installing Epsio FX on the Epsio Server

Introduction

When you receive a new Epsio server from EVS Broadcast Equipment, the Epsio FX server application and other required components have already been installed.

When you decide to install the Epsio FX application on an existing and compatible Epsio server ("Requirements and Limitations" on page 2), you have to proceed to a full installation of the Epsio FX server application, as well as the required PCX3 drive, and the XSecure application.

In case of an upgrade, you can obviously only select the Epsio FX application at the beginning of the installation process, and/or another required component.

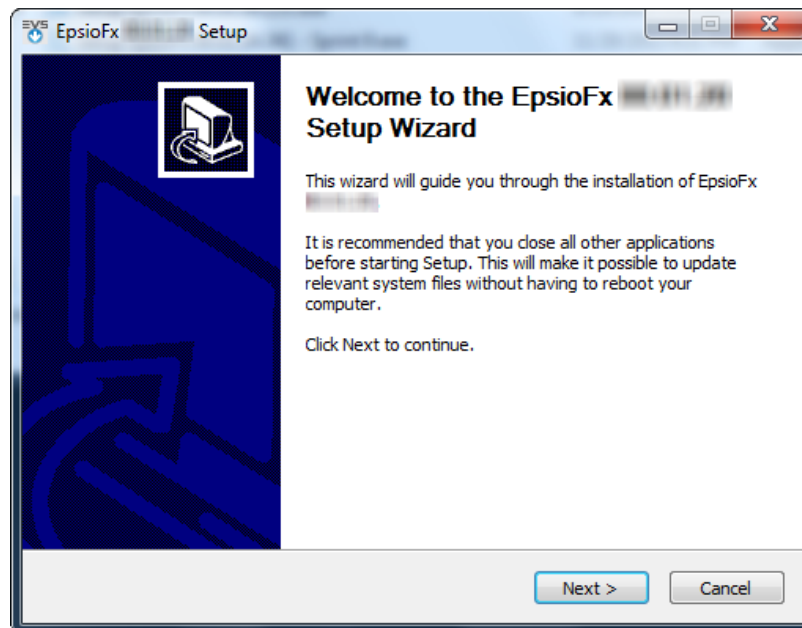
The installation procedure corresponds to a full installation, including the Epsio FX server application, the PCX3 driver and the XSecure Manager.

Procedure

To install the Epsio FX application on the Epsio server, proceed as follows:

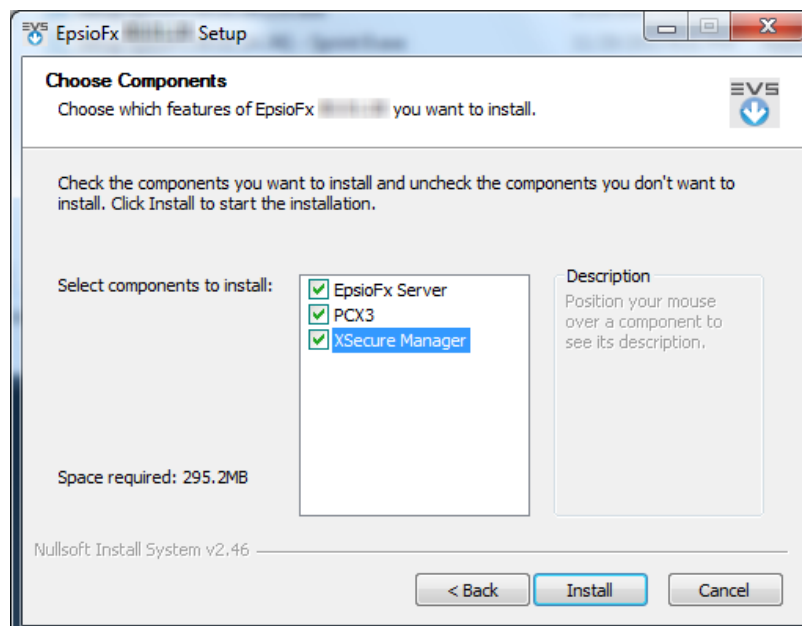
1. Copy locally and double-click the executable file `Setup_EpsioFx_xx.xx.xx.xxx.exe` where the `xx.xx.xx.xxx` stands for the version number.

The installation wizard opens:



2. Click **Next**

In the **Choose Components** dialog box, select the components you want to install, then click **Install**.



The Epsio FX server application is being installed.

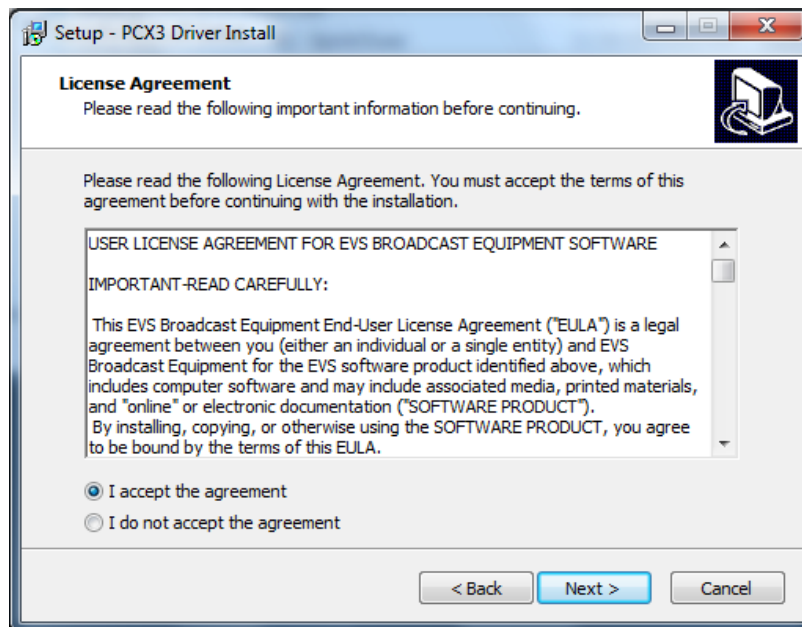
3. If you have not selected the PCX3 driver, do one of the following:
 - If you install XSecure, go to step 7.
 - If you only install the Epsio FX application, go to step 12.

If you have selected the PCX3 component, the following dialog box appears.

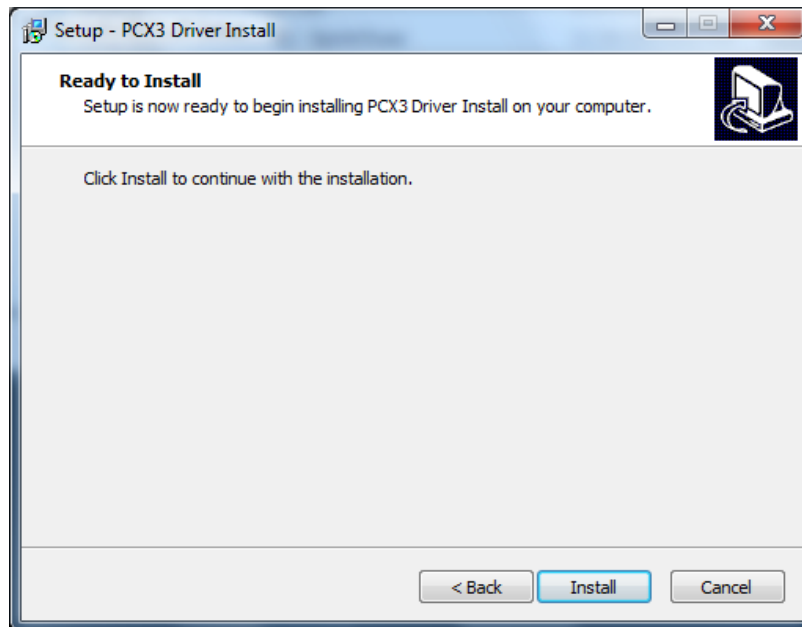
Click **Next**.



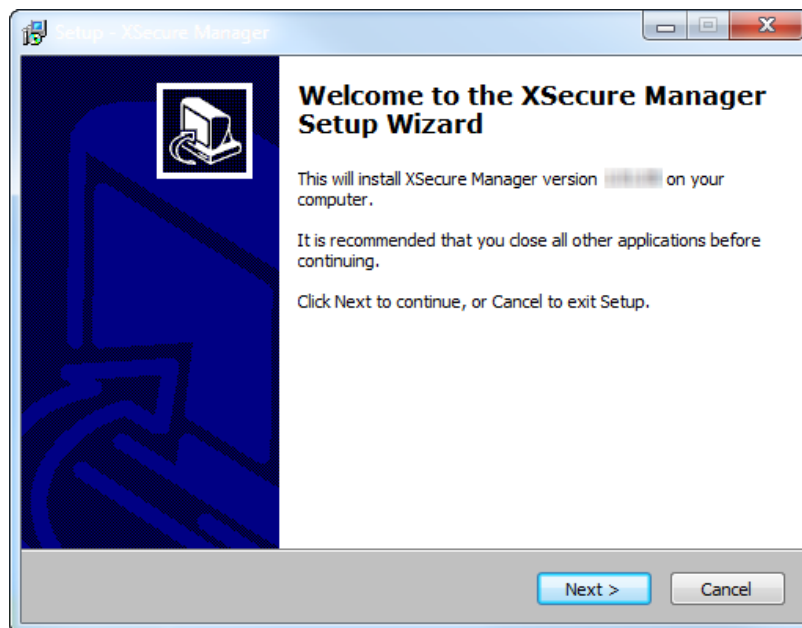
4. In the **License Agreement** window, select **I accept the agreement** and click **Next**.



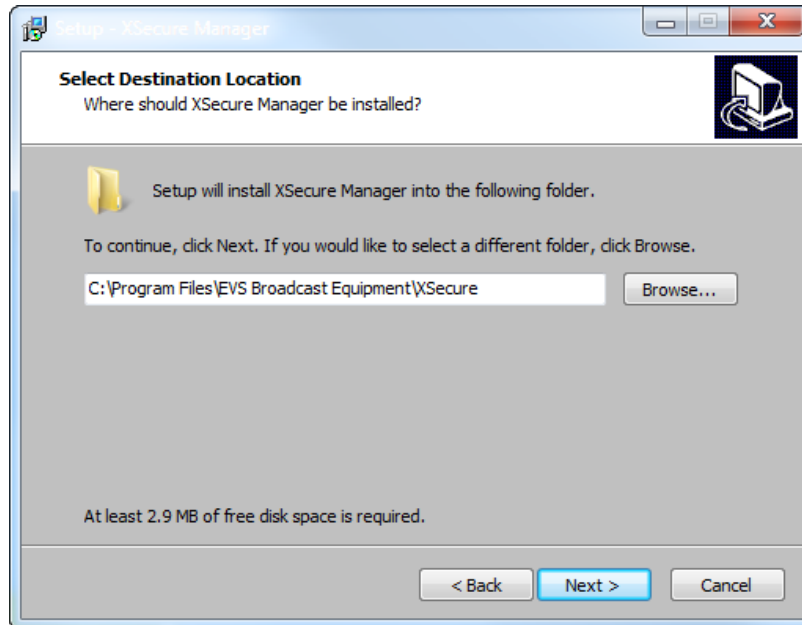
5. In the **Ready to Install** dialog box, click **Install** to launch the installation of the PCX3 driver.



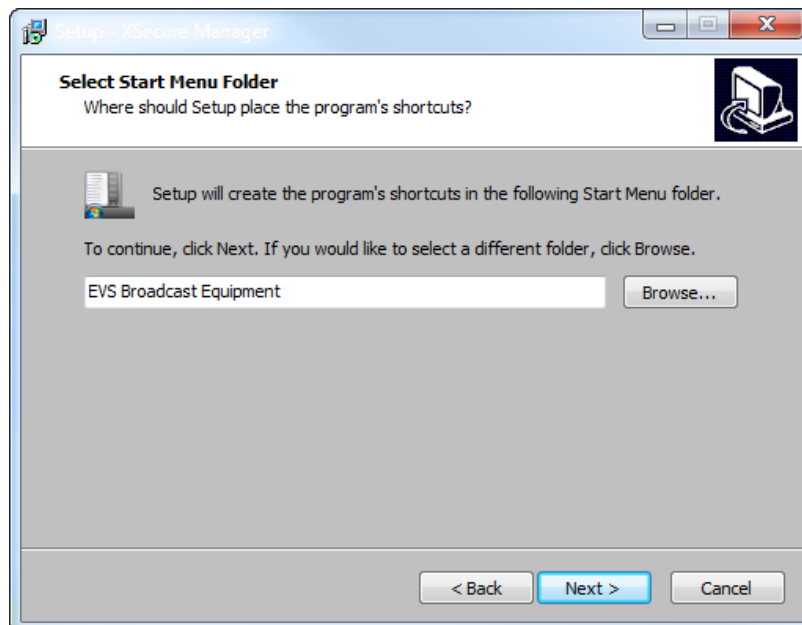
6. When the PCX3 driver is installed, the **Completing the install** dialog box opens. Click **Finish**.
7. If you install the XSecure application, the following dialog box appears. Click **Next**.



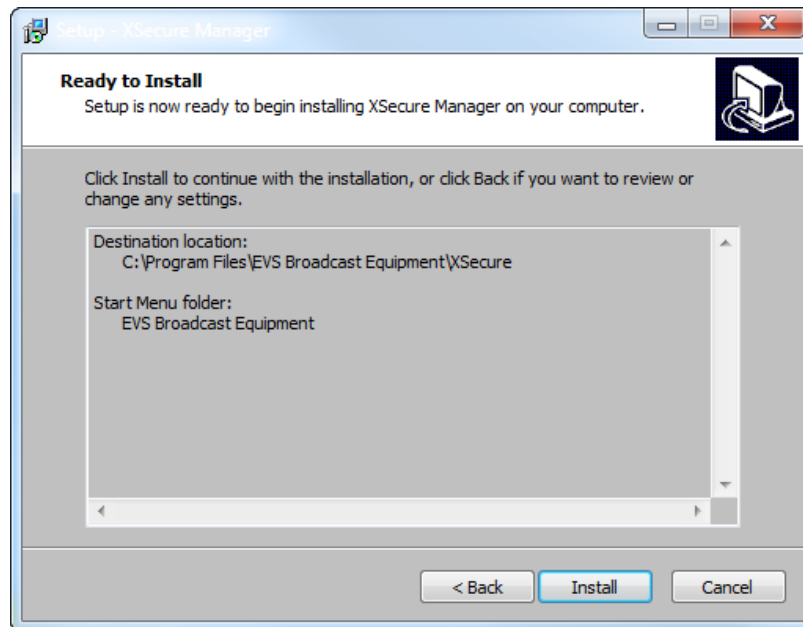
8. In the **Select Destination Location** dialog box, the default installation path is displayed. If required, change it, and click **Next**. Otherwise, simply click **Next**.



9. The **Select Start Menu Folder** dialog box displays the default folder where XSecure will be available in the **Start** menu is displayed. Click **Next**.



10. In the **Ready to Install** dialog box, click **Install** to launch the installation of XSecure.



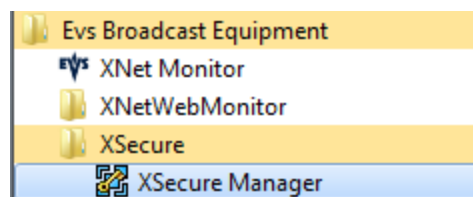
11. When the XSecure application is installed, the **Completing the install** dialog box opens. Click **Finish**.
12. When the Epsio FX server application has been fully installed, the **Completing the install** dialog box opens. Click **Finish**.

2.3. Activating the Epsio FX License in XSecure

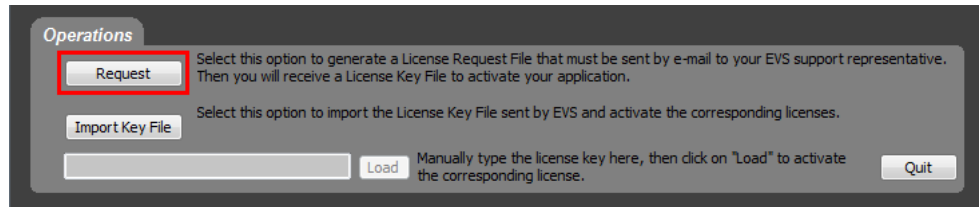
The Epsio FX server application requires an XSecure software license. The XSecure application is included in the installation package to allow you to install XSecure shouldn't it already be installed on the Epsio server.

To activate the Epsio FX license in XSecure, proceed as follows:

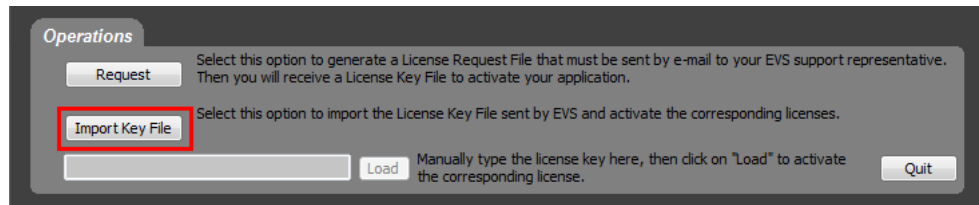
1. In the **Start** menu, select **Evs Broadcast Equipment > XSecure > XSecure Manager** to launch the XSecure application:



2. In XSecure, click the **Request** button in the **Operation** area at the bottom of the main window.



3. Store the .xml file generated by XSecure on your desktop and send it to the EVS Support.
4. When you receive the file containing the license key from the EVS Support, open XSecure and click the **Import Key File** button in the **Operation** area:



5. Select the file you have received and click **Open**.

The license key number is imported into XSecure, and the new license module is displayed in the **License List** area in XSecure.

2.4. Setting up an FTP Server

Introduction

This chapter explains how to create an FTP site on your Epsio server if this has not been configured yet.

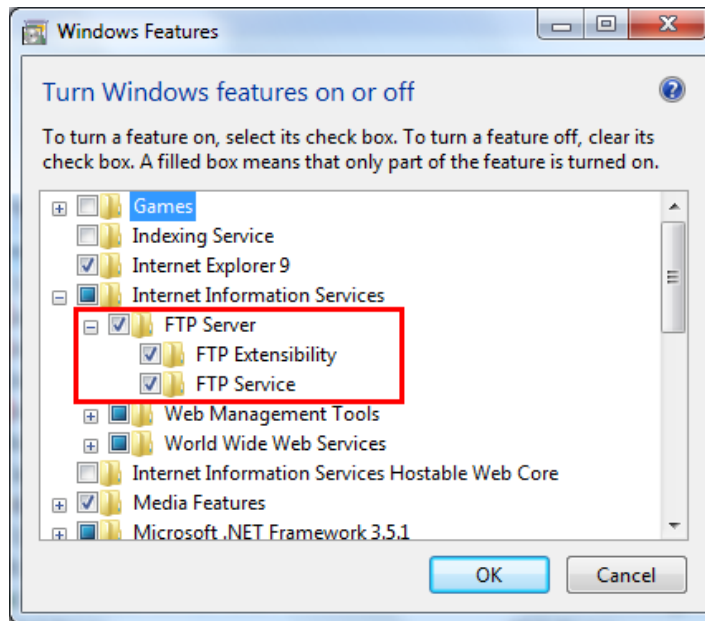
When you select a .tga image sequence to configure a clip or transition overlay on the LSM Connect, the sequence is automatically uploaded on to this FTP site hosted on the Epsio server.

Preliminary Steps

Before you can create the FTP site, you need to make sure that the requested Windows features are turned on, and turn them on if necessary. To do this, proceed as follows:

1. In the **Start** menu, select **Control Panel**.
2. In the Control Panel, check that the **View by** field (upper right) is set to **Large Icons**. Otherwise, select this value.
3. In the Control Panel, select the **Program and Features** menu.
The Uninstall or change a program window appears.
4. Click the hyperlink **Turn Windows features on or off** on the left pane.

5. In the Windows Features window, select the following options:



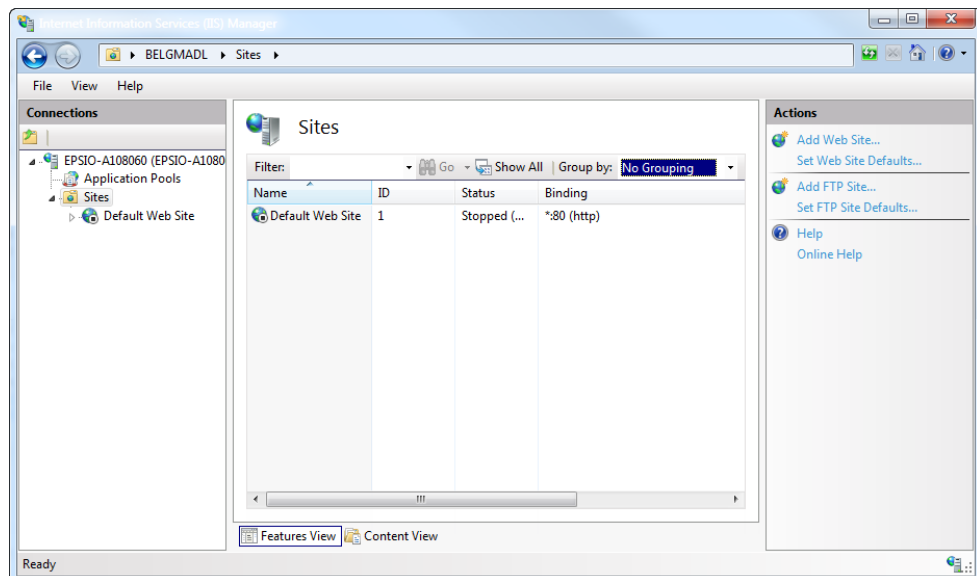
6. Finally, in Windows Explorer, create a folder named **EpsioFxFtp** on the C:\ drive or another data drive.

Procedure

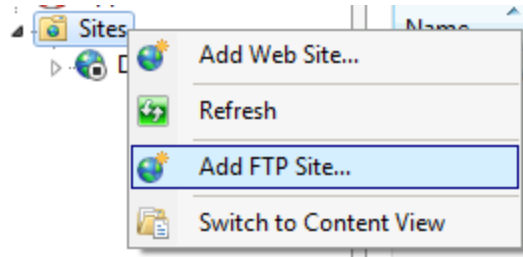
Once you have activated the required Windows features, you can set up the FTP site as follows:

1. Click the Windows **Start** button, and type **IIS** in the **Search** field.
2. In the search results, select **Internet Information Services (IIS) Manager**.

The IIS Manager opens:

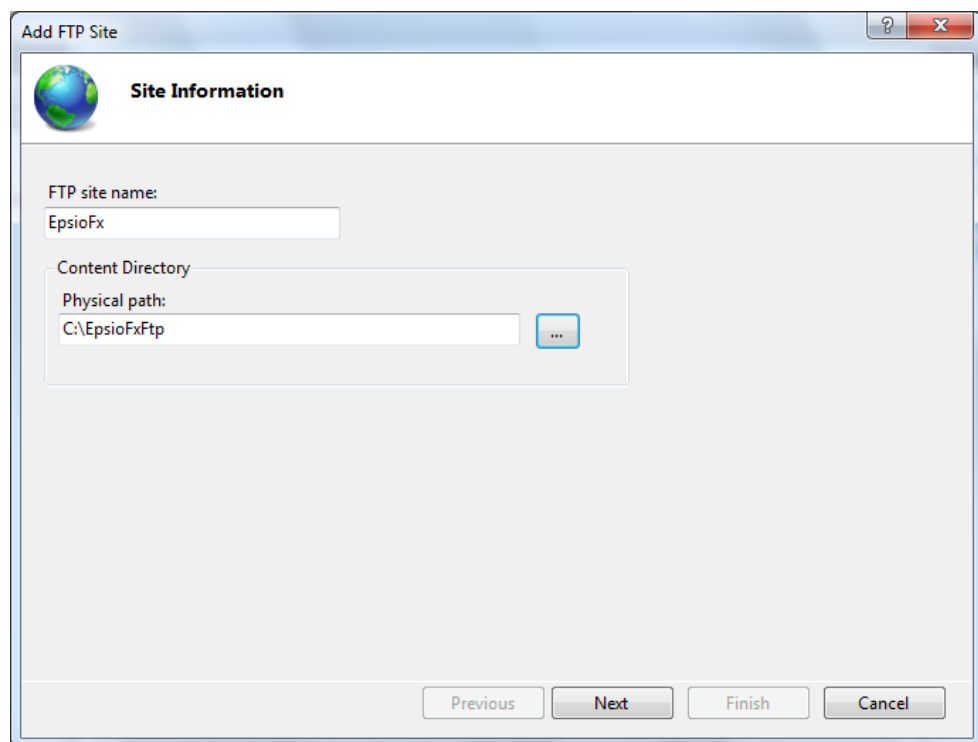


3. In the **Connections** pane, right-click **Sites** and select **Add FTP Site** from the contextual menu:



The **Site Information** window opens.

4. In the **Site Information** window, type **EpsioFx** as FTP site name, and point to the folder **EpsioFxFtp** in the **Physical path** field.



5. Click **Next** and fill in the window with the same values as in the screenshot:

The screenshot shows the 'Add FTP Site' dialog box with the 'Binding and SSL Settings' tab selected. The 'Binding' section has 'IP Address' set to 'All Unassigned' and 'Port' set to '21'. The 'Enable Virtual Host Names' checkbox is unchecked. The 'Start FTP site automatically' checkbox is checked. The 'SSL' section has 'Allow SSL' selected. The 'SSL Certificate' dropdown is set to 'Not Selected'. The 'Next' button is highlighted.

Add FTP Site

Binding and SSL Settings

Binding

IP Address: All Unassigned Port: 21

☐ Enable Virtual Host Names:

Virtual Host (example: ftp.contoso.com):

☒ Start FTP site automatically

SSL

☐ No SSL

☒ Allow SSL

☐ Require SSL

SSL Certificate: Not Selected View...

Previous Next Finish Cancel

6. Click **Next** and fill in the window with the same values as in the screenshot to provide full authentication and full permissions to all users.

The screenshot shows the 'Add FTP Site' dialog box with the 'Authentication and Authorization Information' tab selected. The 'Authentication' section has both 'Anonymous' and 'Basic' checkboxes checked. The 'Authorization' section has 'Allow access to:' set to 'All users'. The 'Permissions' section has both 'Read' and 'Write' checkboxes checked. The 'Finish' button is highlighted.

Add FTP Site

Authentication and Authorization Information

Authentication

☒ Anonymous

☒ Basic

Authorization

Allow access to: All users

Permissions

☒ Read

☒ Write

Previous Next Finish Cancel

7. Click **Finish**.

The new FTP site EpsioFx is added in the Sites list.

2.5. Installing LSM Connect on the LSM Tablet


Automatic Installation

On the LSM tablet, the LSM Connect application (Epsio FX client) is automatically installed:

When the LSM Connect connects to an EVS server, Multicam checks whether the installed version of the LSM Connect is compatible with the Multicam version. Otherwise, Multicam pushes and installs automatically the compatible version of the LSM Connect application to the tablet.

How to Check the Application Version

To check the right application version is installed, proceed as follows:

1. Start LSM Connect.
2. Select the Settings icon  to open LSM Connect Settings window.
3. Tap the **About** menu

The version number is displayed on the right.

EVS Headquarters
Liège Science Park
16, rue Bois St Jean
B-4102 Seraing
Belgium

Corporate
+32 4 361 7000

North & Latin America
+1 973 575 7811

Asia & Pacific
+852 2914 2501

Other regional offices
www.evs.com/contact

EVS Broadcast Equipment is continuously adapting and improving its products in accordance with the ever changing requirements of the Broadcast Industry.
The data contained herein is therefore subject to change without prior notice. Companies and product names are trademarks or registered trademarks of their respective companies.



To learn more about EVS go to www.evs.com