

Panasonic®

PROGRAMMABLE CONTROLLER

FP OPC Server

User's Manual



Before beginning

Liability and copyright for the hardware

This manual and everything described in it are copyrighted. You may not copy this manual, in whole or part, without written consent of Panasonic Electric Works Europe AG (PEWEU).

PEWEU pursues a policy of continuous improvement of the design and performance of its products. Therefore we reserve the right to change the manual/product without notice. In no event will PEWEU be liable for direct, special, incidental, or consequential damage resulting from any defect in the product or its documentation, even if advised of the possibility of such damages.

We invite your comments on this manual. Please e-mail us at:

techdoc.peweu@eu.panasonic.com.

Please direct support matters and technical questions to your local Panasonic representative.

Limited warranty

If physical defects caused by distribution are found, PEWEU will replace/repair the product free of charge. Exceptions include:

- When physical defects are due to different usage/treatment of the product other than described in the manual.
- When physical defects are due to defective equipment other than the distributed product.
- When physical defects are due to modifications/repairs by someone other than PEWEU.
- When physical defects are due to natural disasters.

Important symbols

One or more of the following symbols may be used in this documentation:

DANGER



Indicates a hazardous situation which, if not avoided, will result in death or serious injury.

WARNING



Indicates a hazardous situation which, if not avoided, could result in serious or moderate injury.

CAUTION



Indicates a hazardous situation which, if not avoided, could result in minor or moderate injury.

NOTICE

Indicates a property damage message

Note

Contains additional information or special remarks

Example

Contains an illustrative example of the previous text section.

Procedure

Indicates that a step-by-step procedure follows.

Reference

Indicates where you can find additional information on the subject at hand.

Table of contents

1. Overview.....	9
1.1 Introduction to the Panasonic FP OPC Server	9
1.2 OPC and Its Underlying Technology	9
1.3 Features of the FP OPC Server.....	13
1.3.1 Connectivity	13
1.3.2 Interruption Tolerance.....	14
1.3.3 Communication Driver Test and Protocol Adaptation.....	15
1.3.4 User Interface	15
1.3.5 Namespaces.....	15
1.3.6 Basic Software.....	17
1.3.7 Online Changes.....	17
1.4 Hardware and Software Requirements.....	18
2. First Steps Using the FP OPC Server	19
1.5 Install the FP OPC Server	19
1.6 Start/Stop the FP OPC Server Application	20
1.6.1 Start the FP OPC Server Application.....	20
1.6.2 Stop the FP OPC Server Application.....	22
1.7 Channels.....	23
1.7.1 Add a New Channel.....	23
1.7.2 Update an Existing Channel	25
1.8 Element Structure	26
1.9 Devices.....	27
1.9.1 Add a New Device	27

1.10	Tag Groups	28
1.10.1	Add a New Tag Group.....	28
1.11	Tags	29
1.11.1	Add a New Tag.....	30
1.11.2	Update an Existing Tag.....	31
1.12	Server Operation	32
1.12.1	Start the Server	33
1.12.2	Stop the Server	34
1.13	Transferring Project Information.....	35
1.13.1	Open/Save Project.....	35
1.13.2	Import/Export Tag Data.....	37
3.	Graphical User Interface (GUI).....	41
1.14	Configure the Working Area	41
1.15	Menu Names and Commands.....	43
1.15.1	File Menu.....	44
1.15.2	Edit menu	44
1.15.3	View Menu.....	44
1.15.4	Server Menu.....	45
1.15.5	Tools Menu.....	45
1.15.6	Help Menu	45
1.16	Panes	46
1.16.1	Navigator Pane.....	46
1.16.2	Tag Pane.....	46
1.16.3	System Log Pane	48
1.16.4	Server Status Pane	49
1.16.5	Help Pane.....	51

1.17	Toolbars.....	51
1.18	Wizard.....	51
1.18.1	New Channel Wizard.....	52
1.18.2	New Device Wizard	53
1.18.3	New Tag Group Wizard	53
1.18.4	New Tag Wizard	54
1.19	Project Information Input/Output.....	54
1.20	Communication Settings Dialog.....	55
1.20.1	Serial Communication Settings.....	55
1.20.2	Modem Communication Settings.....	57
1.20.3	Ethernet Communication Settings	58
1.20.4	Ethernet (Local) Communication Settings	60
1.20.5	USB Communication Settings	63
1.21	System Tray.....	63
4.	Namespaces.....	64
1.22	Introduction to Namespaces	64
1.23	Static, Manually Defined Namespace.....	65
1.24	System Status Namespace	66
1.25	MEWTOCOL OPC Server Compatibility Namespace	66
5.	Appendix	69
1.26	Panasonic Addresses	69
1.26.1	Special Internal Relays.....	69
1.26.2	Special Internal Data Registers	69
1.27	Panasonic Data Types.....	70

1.28 Panasonic FP PLC Network Types	73
1.28.1 Serial Network	73
1.28.2 Ethernet Network.....	74
1.29 DCOM Configuration	75
1.30 Abbreviations.....	82

Index	85
--------------------	-----------

Record of changes

1.1 Introduction to the Panasonic FP OPC Server

The Panasonic FP OPC Server is a 32-bit Windows application with a modern user interface. It realizes the server end in the standard client/server model and incorporates the OPC DA standard. It allows you to share information between our proprietary devices (Panasonic FP Series PLCs) and any other device or application that supports the OPC DA standard.

OPC DA technology succeeds Microsoft's Dynamic Data Exchange (DDE) technology in the demanding industrial environment.

1.2 OPC and Its Underlying Technology

OPC (**O**LE (Object Linking and Embedding) for **P**rocess **C**ontrol) is the successor of DDE technology.

According to the OPC Foundation, "OPC is open connectivity in industrial automation and the enterprise systems that support industry.

Interoperability is assured through the creation and maintenance of open standards specifications. There are currently seven standards specifications completed or in development ("What is OPC?"; www.opcfoundation.org <http://www.opcfoundation.org>").

OPC is based on a series of approved standards and technologies of the consumer computer world. It was originally based on **OLE COM** (Component **O**bject **M**odel) and **DCOM** (**D**istributed **C**omponent **O**bject **M**odel), which provide the framework. Microsoft even added OPC standard to the OLE specification. OPC interface applications are built once and used several

times, thus are approved and under constant quality control.

With OPC, data can be exchanged efficiently using a standardized interface, hence vendors do not have to implement their own communication drivers. Therefore it allows vendors to reduce implementation costs and save time, thus reducing the project cycle time.

OPC Foundation

The OPC Foundation defines itself as being "dedicated to ensuring interoperability in automation by creating and maintaining open specifications that standardize the communication of acquired process data, alarm and event records, historical data, and batch data to multi-vendor enterprise systems and between production devices. Production devices include sensors, instruments, PLCs, RTUs, DCSs, HMIs, historians, trending subsystems, alarm subsystems, and more as used in the process industry, manufacturing, and in acquiring and transporting oil, gas, and minerals (OPC Foundation; "What is the OPC Foundation?"; www.opcfoundation.org <http://www.opcfoundation.org>)".

The OPC Foundation is a cooperation of automation control product vendors and Microsoft. As of 2006, the foundation had about 300 members worldwide. The main standard, with which it all began, is the OPC DA (Data Access) specification.

Compliance tests are provided to the members to test OPC conformity.

COM

The **COM** (**C**omponent **O**bject **M**odel) interface defines the externally visible binary structure of a COM object. The COM object is hereby the implementation of this model and can be based on several interfaces which define access to the object. It offers runtime access to the incorporated interfaces of a COM object and interprocess communication. Reference counting is implemented to manage the object's life cycle. Interactions between components are based on method-accesses defined in interfaces. COM applications are restricted to run locally on single computers only.

DCOM

Upon inception, **DCOM** (**D**istributed **C**omponent **O**bject **M**odel) faced two major challenges:

- program-based processing of information, which led to information being represented differently
- backwards compatibility to existing COM and DDE applications

OLE is based directly on DCOM. The DCOM interface allows COM applications to be distributed on several computers, providing a single security concept.

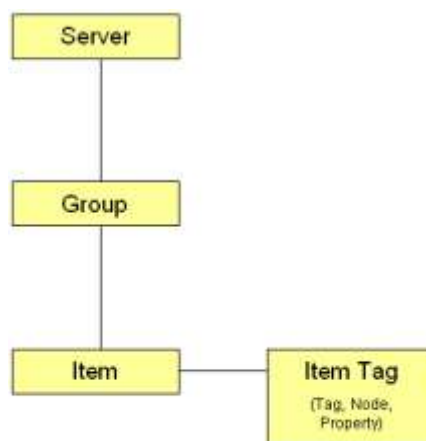
DCOM applications are restricted by not:

- running over firewalls
- being platform independent (only Microsoft operating systems are supported)

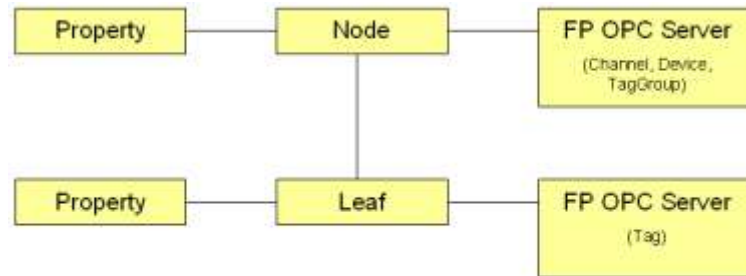
OPC Data Access (DA)

Version 1 of the OPC DA (Data Access) standard was released in 1996. Today version 3.0 is available. A task force within the OPC Foundation <http://www.opcfoundation.org> maintains and revises the OPC DA specification.

The specification shows and describes how to construct client and server applications and allows vendors to quickly develop their own applications. It defines object hierarchy consisting of several **OPC server objects**, which in turn can consist of several **OPC group objects**. The group objects themselves can be composed of **OPC item objects**. OPC items correspond to process values and represent connections to data sources.



The COM interface incorporated in the server offers the client two object types: group and item. A server object is automatically created after the client connects to the server. Associated with each item is a time stamp, its quality and the value of the item as a VARIANT type. The item tags--tag, node or property objects--have to be realized on the server side.



The node objects can contain either other node objects or leaf objects. Node objects are implemented as channel, device or tag group elements within the FP OPC Server. Tag objects, which are implemented as tag elements, represent the leaf objects in the object tree.

The OPC client connected to the OPC server is responsible for the type of information it retrieves. It has to define the group structure, the poll rate and the read type, i.e. asynchronous or synchronous data retrieval. Using synchronous data retrieval, the client has to wait until the read operation is finished; using asynchronous data retrieval, on the other hand, allows the client to be informed immediately when data changes.

1.3 Features of the FP OPC Server

The Panasonic FP OPC Server is a **OutProc Server**, thus the server application is started from an autarkic executable file. The server allows high-performance data transfer between applications that support the OPC DA standard and Panasonic FP Series PLCs.

The following features are provided:

1.3.1 Connectivity

The server provides “two-sided” connectivity: one side provides access to applications that support OPC DA; the other side provides access to FP Series

PLCs.

In order to enable the user to perform functional tests, a simulation mode is implemented. This mode allows you to design the application without any PLC being connected to the computer.

OPC Connectivity

The server complies to the following OPC DA client/server technologies:

- OPC DA 1.0a
- OPC DA 2.05a
- OPC DA 3.0

Data can be exchanged between client and server in asynchronous, synchronous and refresh mode.

Device Connectivity

A standardized interface allows you to:

- monitor data from Panasonic FP PLCs
- synchronize data access and data writing
- use various communication types

PLCs can be accessed via serial port (see p. 73), modem (see p. 57) and Ethernet (see p. 74). The server offers modem support to connect to remote stations via dial-up phone calls.

Specify the communication mode at the communication channel level when you configure the application. Setting up the communication channel to use the modem means that dialing and connecting to the remote device is fully transparent to the OPC client application. Modem connections and direct serial communication work similarly.

1.3.2 Interruption Tolerance

In case a connected device stops responding, for instance because of a line interruption, the optimized communication is carried on for the still connected devices. Thus, the communication breakdown does not influence the time-out or response behavior of the devices which are still online. If the

device starts being responsive again, the data transfer from / to the previously disconnected PLC is reinitialized and carried out normally.

1.3.3 Communication Driver Test and Protocol Adaptation

If the server or application created with the server should be tested, the user can use a simulation driver to simulate reading and writing from and to virtual devices.

To test MEWTOCOL protocol communication, the channel settings made by the user can be tested directly in the server application. Furthermore, the user can influence the type of protocol (use of RD commands instead of MD commands) to be used to prevent interdependencies with other applications using the MEWTOCOL protocol, for instance.

For detailed information, please refer to the Options dialog of the Tools menu in the online help.

1.3.4 User Interface

A modern, intuitive user interface (see p. 41) allows you to configure the server. While creating the application, sophisticated user assistance is available at any time. Various hints and error notifications help you configure the server. Online documentation is omnipresent to clarify the server configuration application. You are warned of possible faulty settings or changes while the server is running. Wizard dialogs assist you in creating and altering elements.

The server allows you to change the display of the main window. The server can appear minimized as an icon in the system tray or maximized on the desktop. If started by an OPC client, the server is automatically started minimized in the tray icon, but can be brought to the foreground by simply double clicking the icon in the system tray (see p. 63).

1.3.5 Namespaces

The OPC client browse able namespace provided by the server represents a description of all process values an OPC client can query from. It can be

distinguished between three different types of namespace elements.

For detailed information, please refer to Namespaces (see p. 64).

Static, Manual Namespace

The manual, "static" namespace is specified in the configuration user interface of the server. The user who administrates the server, creates channels, devices, tag groups and tags. The user specifies the settings of the communication lines, the PLC and the data sources to be provided to the client.

For detailed information, please refer to Static, Manually Defined Namespace (see p. 65).

System Status Namespace

This namespace contains system tags, which are used to provide status feedback on the server running. The client simply creates items of these tags and thereby retrieves the server status directly in the client application. The system status namespace shows the system date, system time, uptime, project path, number of tags, number of tags active in the clients and the number of clients connected.

For detailed information, please refer to System Status Namespace (see p. 66).

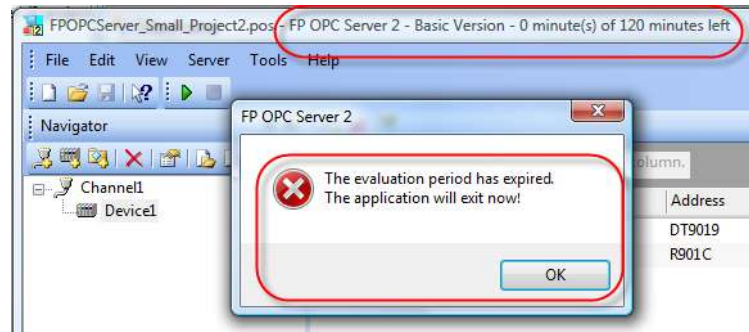
MEWTOCOL OPC Server Compatibility Namespace

A MEWTOCOL OPC Server (the predecessor of this server) compatibility namespace is also provided. The user configures the communication settings, which are common for the communication lines (serial (see p. 55), modem (see p. 57) or Ethernet (see p. 58)). To use this namespace, the OPC client has to create the items such that they follow a certain syntax. The item path can be adapted to the specific needs.

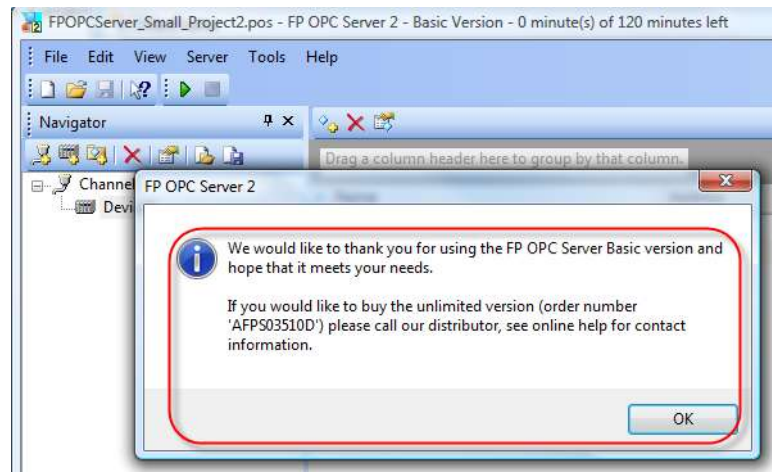
For syntax regulations and restrictions, please refer to MEWTOCOL OPC Server compatibility namespace (see p. 66).

1.3.6 Basic Software

The FP OPC Server is also available as Basic Software, which can be installed **without** a license number. After using the Basic Software for 120 minutes, you will be asked to save your project and all connections to the server are terminated. Watch the title bar to see how many minutes are left.



You must confirm the message box displayed before you can restart the server.



This message box is also displayed if the connection is closed before the time has expired.

Please contact your local Panasonic distributor for the unlimited version.

1.3.7 Online Changes

During online sessions, i.e. when OPC clients are connected to the FP OPC Server, you can make comprehensive changes to the currently opened project. You can add new elements such as channels, devices, tag groups or

tag elements (see p. 46) to the project. You can apply all kinds of changes, except deleting and renaming, to all elements.

Note

You can only delete and rename elements which are not currently being used by the client.

1.4 Hardware and Software Requirements

	Item	Required
Hardware	Hard disk space	20MB or more
	CPU grade	300MHz or more
	Lowest capacity memory	128MB or more
	Available display resolution	1024 *768 or more
Operating Systems	Microsoft Windows XP	SP3
	Microsoft Windows Vista	
	Microsoft Windows 7	
	Microsoft Windows 8	
	Microsoft Windows 2003 Server	SP2

Chapter 2

First Steps Using the FP OPC Server

2.1 Install the FP OPC Server

Before you begin the installation, unzip "SetupFPOPCServerxx.zip" and save it on your hard drive.

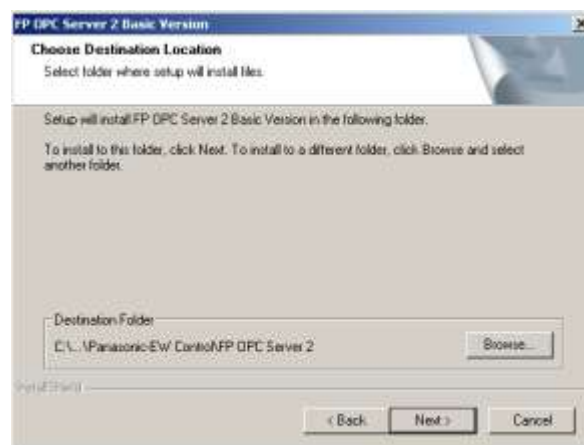
Procedure

1. Double-click "SetupFPOPCServerxx.exe" to run the installer
2. Select [Next]
3. Read and accept the "License Agreement"
4. Select [Next]

Enter your customer information and serial number (for the unlimited version only). The Basic version (see Basic Software in the online help) runs without serial number.

5. Select [Next]

The following dialog appears and allows you to review the path you entered.



6. Select [Browse] to select the installation directory
7. Select [Next]

The following dialog appears.



8. Specify the location of the program icons in the start menu
9. Select [Next]

The dialog "Start Copying Files" appears so you can review your settings.

10. If the settings are OK, select [Next] to install the software
11. Select whether to restart your PC and then [Finish] to finish the installation

The Panasonic FP OPC Server is now installed on your system.

Note

Start the FP OPC Server at least once to register the application in the windows system.

2.2 Start/Stop the FP OPC Server Application

2.2.1 Start the FP OPC Server Application

The OPC server can start in two modes:

- manually
- automatically, when an OPC client application tries to connect to the server.

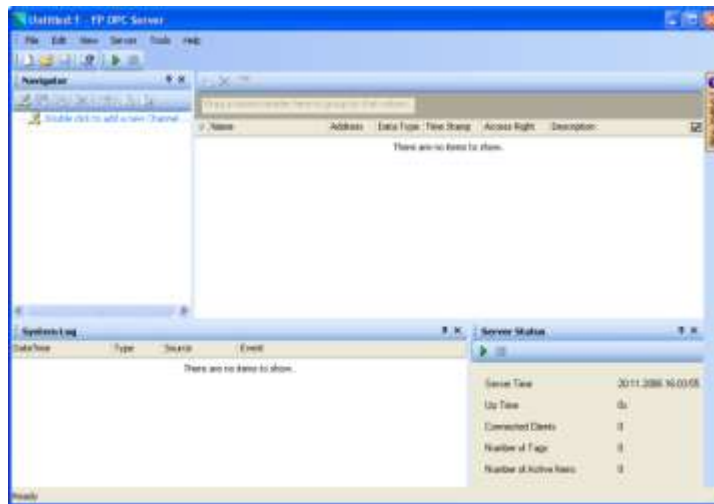
Procedure

Manual Start

1. Double-click the FP OPC Server icon



The configuration user interface with an empty project is started.

**Automatic Start**

1. Start the OPC client application

Here the Softing Demo Client is started.



2. Browse the available server list, select FP OPC Server and connect to the server

Here by double-clicking the icon.



Now the OPC server is started automatically and the server icon is displayed in the system tray (see p. 63).



The default project file (specified under **Tools** → **Options**) is automatically loaded, the OPC subsystem is started and the client is connected to the server. If no default project has been specified, the most recently used project is loaded.

Note

If the OPC server application is started manually but the OPC subsystem has not been started, a new client connect starts the OPC subsystem and connects to this server instance.

2.2.2 Stop the FP OPC Server Application

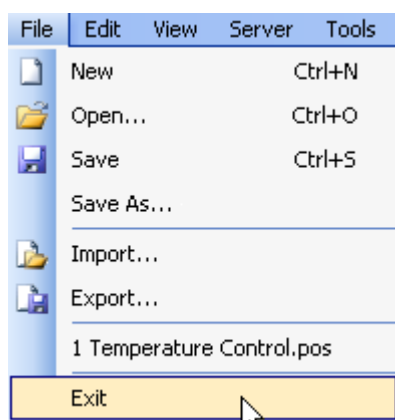
The OPC server application also stops in two ways:

- manually, e.g. by user intervention
- automatically, after the last OPC client application terminates the connection to the OPC server.

Procedure

Manual Stop

1. Select "Exit" in the File menu or tray icon menu



Alternatively, click the close button of the application window.



Automatic Stop

The OPC server automatically stops when all clients have disconnected.



Note

The OPC server application is only terminated automatically if the configuration window is minimized to the system tray (see p. **63**).

2.3 Channels

A channel represents a means of communication. The following means of communication are possible:

- Serial communication (see p. 73) (RS232)
- Modem (see p. 57)
- Ethernet (see p. 74)
- USB (see p. 63)

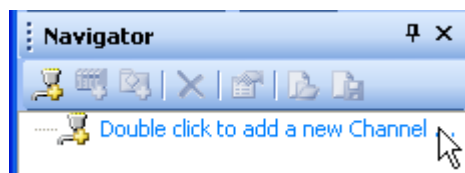
Please also refer to:

- Channel element in the online help
- New Channel Wizard (see p. 52)

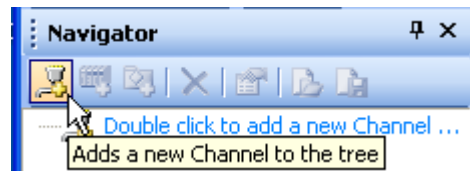
2.3.1 Add a New Channel

There are four ways to add a new channel element:

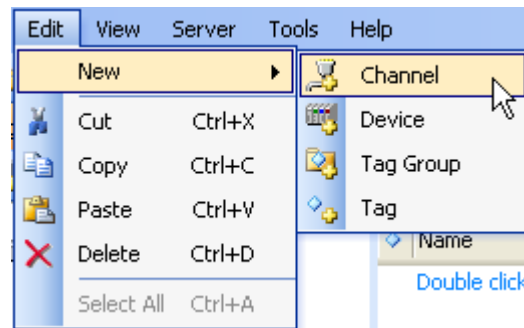
1. Double-click the dummy element



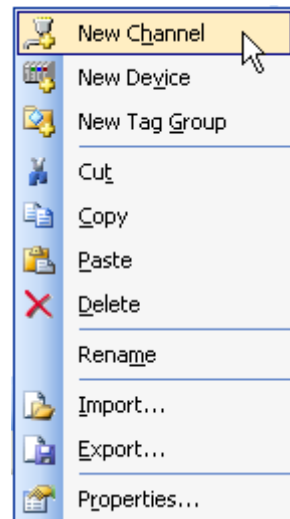
2. Click a toolbar icon



3. Select menu **Edit** → **New** → **Channel**



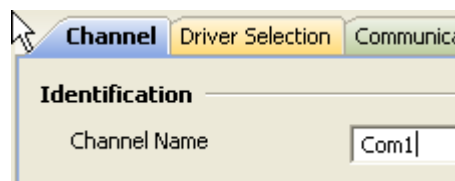
4. Select **New Channel** from the navigator pane's (see p. 46) pop-up menu.



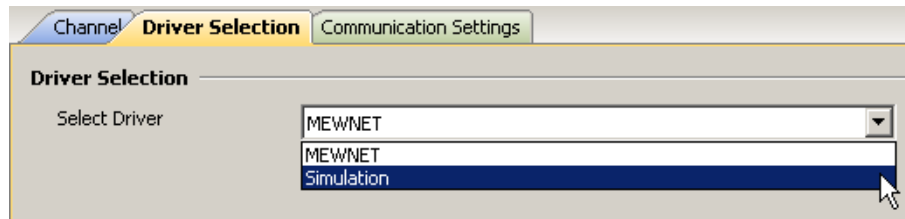
In all cases the wizard (see p. 52) starts. Now create the new channel.

Procedure

1. Specify a name for the new channel

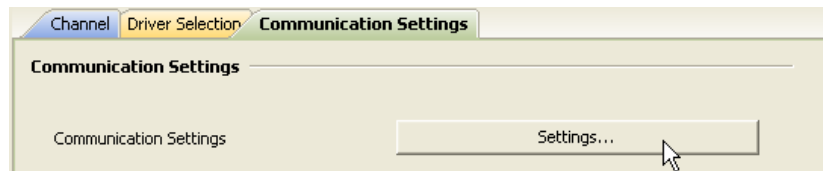


2. Select the driver



For further information, refer to driver selection.

3. Fill in the communication settings by clicking [Settings...]

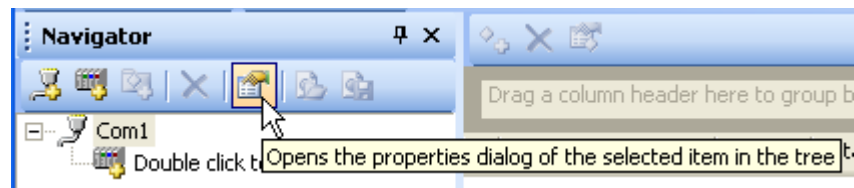


The communication settings (see p. 55) dialog will appear.

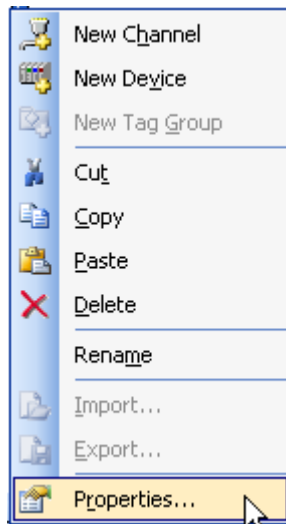
2.3.2 Update an Existing Channel

To update an existing channel element:

- double-click the channel element, or
- select **Properties** from the toolbar or pop-up menu.



Select "Properties" from the toolbar.



Select "Properties" from the pop-up menu.

2.4 Element Structure

The FP OPC Server allows the creation of a clearly membered hierarchical element structure that fits the nature of the application. The hierarchy consists of several layers: On the first layer, multiple communication channels specify the mean communication. The channels comprise multiple devices to specify the PLC and its station number. Devices can contain multiple tag groups to segregate tag data on a group-by-group basis. Devices or tag groups themselves contain the tag data (see p. 46).

A state-of-the-art import/export mechanism allow you to save, exchange or edit the data in the XML file format. Exchanging data can also be done using a CSV file. For further information, please refer to Import/Export Tag Information (see p. 54).

2.5 Devices

A device represents a hardware device, a Panasonic FP series PLC, connected to the OPC server.

The data sources provided by the server application in the namespaces (see p. 64) are situated on these devices. Data sources are hereby relay or register addresses (see p. 69), which can be accessed by the OPC server.

Please also refer to:

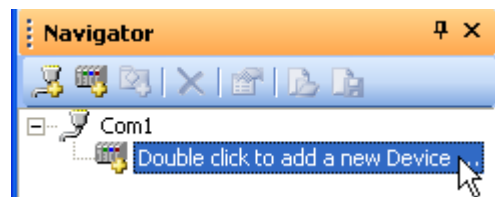
- Device element in the online help
- New Device Wizard (see p. 53)

2.5.1 Add a New Device

Procedure

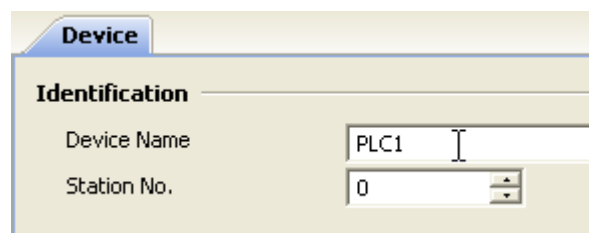
1. Open the wizard (see p. 53) to create a new device element in one of the four ways described in "Add a New Channel (see p. 52)"

Here the dummy item is used to create a new device.

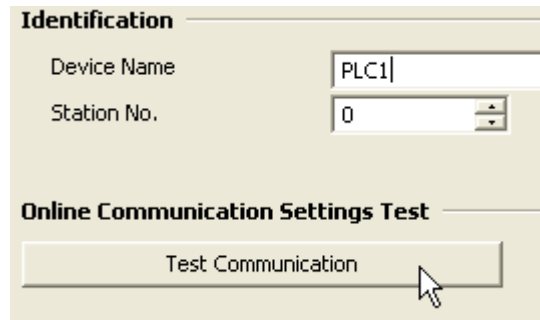


The wizard opens.

2. Specify a name for the new device.




3. To test the communication settings specified for the "Channel (see p. 23)", select [Test Communication]



The screenshot shows a software interface with two main sections. The top section, titled "Identification", contains two input fields: "Device Name" with the text "PLC1" and "Station No." with the value "0". The bottom section, titled "Online Communication Settings Test", features a prominent button labeled "Test Communication". A mouse cursor is positioned over the right side of this button.

To update an existing device, please refer to the procedure of update an existing channel (see p. 25).

2.6 Tag Groups

A tag group  represents a structural element for grouping tag elements according to your application's needs. For instance, a group "Temperature" and "Liquid Level" can be created in the same device to distinguish between data sources related to temperature and those related to liquid levels.

Additionally a tag group can be used to assign a certain time stamp to all tags included in the tag group. The time stamp can be specified by a DATE_AND_TIME variable in the PLC project.

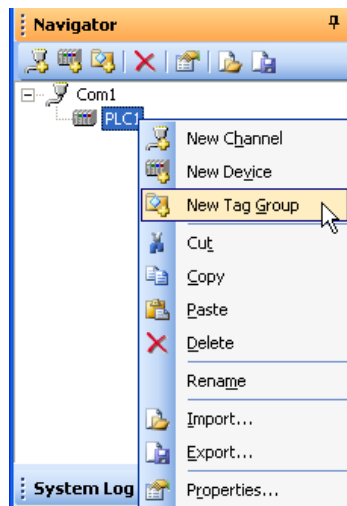
Please also refer to: New tag group wizard (see p. 53)

2.6.1 Add a New Tag Group

Procedure

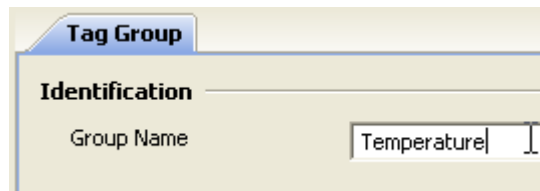
1. Open the wizard (see p. 53) to create a new tag group element in one of the four ways described in "Add a New Channel (see p. 52)"

Here the pop-up menu is used to create the new tag group.



The wizard opens.

2. Specify the name of the tag group element



To update an existing tag group, please refer to the procedure of update an existing channel (see p. 25).

2.7 Tags

A tag represents a single PLC variable (address).

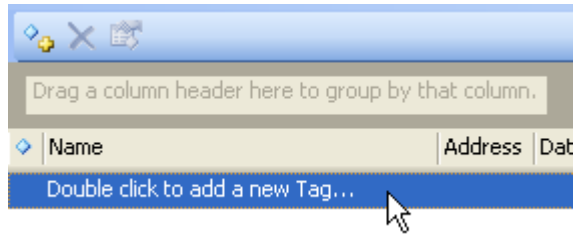
Please also refer to:

- Tag pane (see p. 46)
- New Tag Wizard (see p. 54)

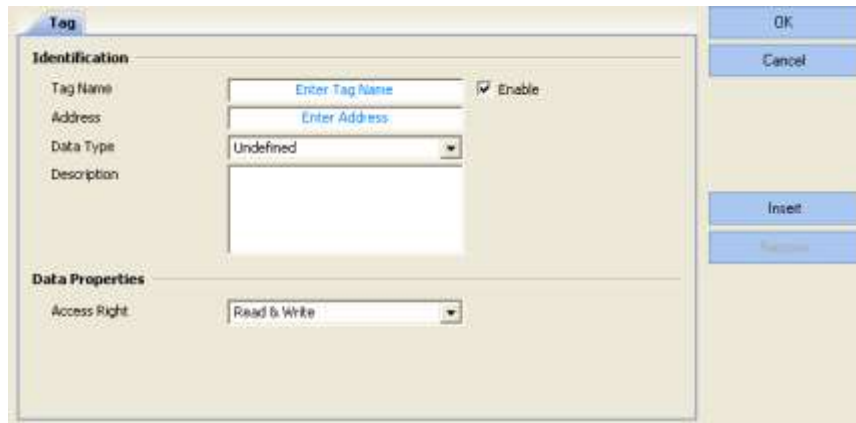
2.7.1 Add a New Tag

Procedure

1. Create a tag as described in "Add a New Channel (see p. 23)" section
Here, the dummy item is used to create the new tag.
2. Double-click to add a new tag

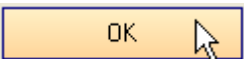


The wizard opens.



3. Specify the name, correct address, data type, description and the access type of the tag element
4. Select [Insert] to add the element directly to the list without closing the dialog

Repeat selecting [Insert] to create a series of tag elements that count up tag names and addresses.

5. Select  when you have finished adding all elements

Example

An example namespace.

Name	Address	Data Type	Time Stamp	Access Right	Description
HeatingOn	R0	Boolean	08.08.2006 15:43:32	Read & Write	Activates the Heating.
InsideTemperature	DT1	Integer	08.08.2006 15:43:31	Read & Write	The temperature inside the building.
OutsideTemperature	DT0	Integer	08.08.2006 15:43:31	Read & Write	The temperature of the courtyard.
StatusMessage	DT100	String	08.08.2006 15:43:32	Read & Write	Displays the current status.

2.7.2 Update an Existing Tag

You can update an existing tag in several ways.

For example, simply click in the field which should be changed, e.g. to update a name.

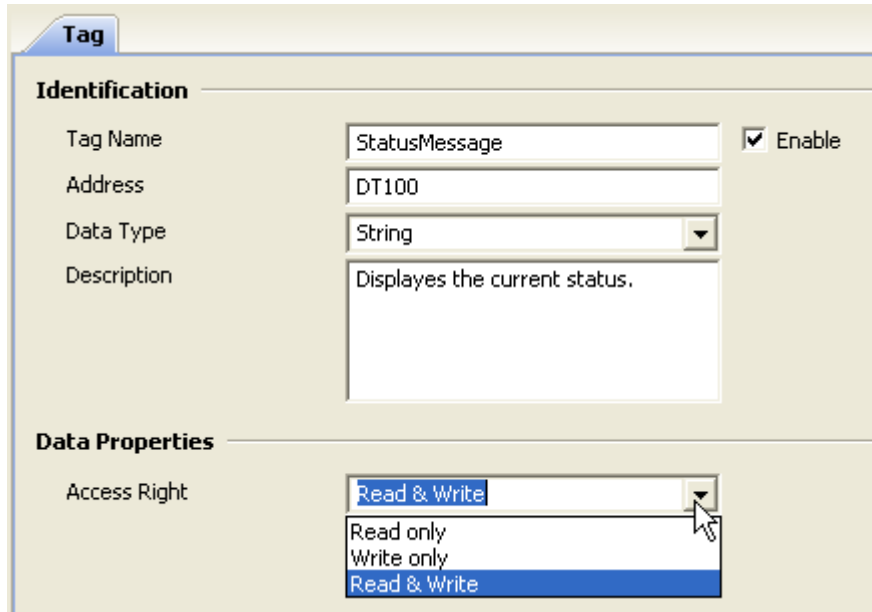
Name	Address	Data Type	Creation Time	Access Right	Description
HeatingOn	R0	Boolean	9/26/2011 12:06:49 PM	Read & Write	activates the heating
StatusMessage	DT100	String	9/26/2011 12:09:43 PM	Read & Write	displays the current status
InsideTemperature	DT1	Signed 16-bit	9/26/2011 12:07:22 PM	Read & Write	the temperature inside the building
OutsideTemperature	DT0	Signed 16-bit	9/26/2011 12:08:53 PM	Read & Write	the temperature of the courtyard

Change multiple elements by selecting the desired elements and typing or selecting the new value. In this case, 3 elements were selected and their access rights changed to "read only".

Name	Address	Data Type	Creation Time	Access Right	Description
HeatingOn	R0	Boolean	9/26/2011 12:06:49 PM	Read only	activates the heating
InsideTemperature	DT1	Signed 16-bit	9/26/2011 12:07:22 PM	Read only	the temperature inside the building
OutsideTemperature	DT0	Signed 16-bit	9/26/2011 12:08:53 PM	Read only	the temperature of the courtyard
StatusMessage	DT100	String	9/26/2011 12:09:43 PM	Read & Write	displays the current status

Name	Address	Data Type	Creation Time	Access Right	Description
HeatingOn	R0	Boolean	9/26/2011 12:06:49 PM	Read only	activates the heating
InsideTemperature	DT1	Signed 16-bit	9/26/2011 12:07:22 PM	Read only	the temperature inside the building
OutsideTemperature	DT0	Signed 16-bit	9/26/2011 12:08:53 PM	Read only	the temperature of the courtyard
StatusMessage	DT100	String	9/26/2011 12:09:43 PM	Read & Write	displays the current status


You can also change the tag's properties by double-clicking the tag to activate the wizard.



Note

You can only update values for individual elements when you use the wizard.

2.8 Server Operation

In order to accept connections for an OPC client application, you must start the server's OPC subsystem by clicking . After the server is started, clients can connect to the server.

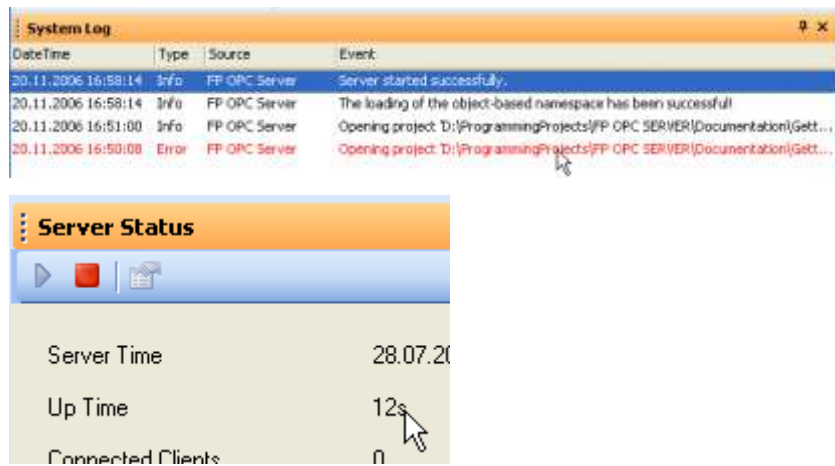
Note

If the OPC server application is started manually but the OPC subsystem has not been started, a new client connect starts the OPC subsystem and connects to this server instance.

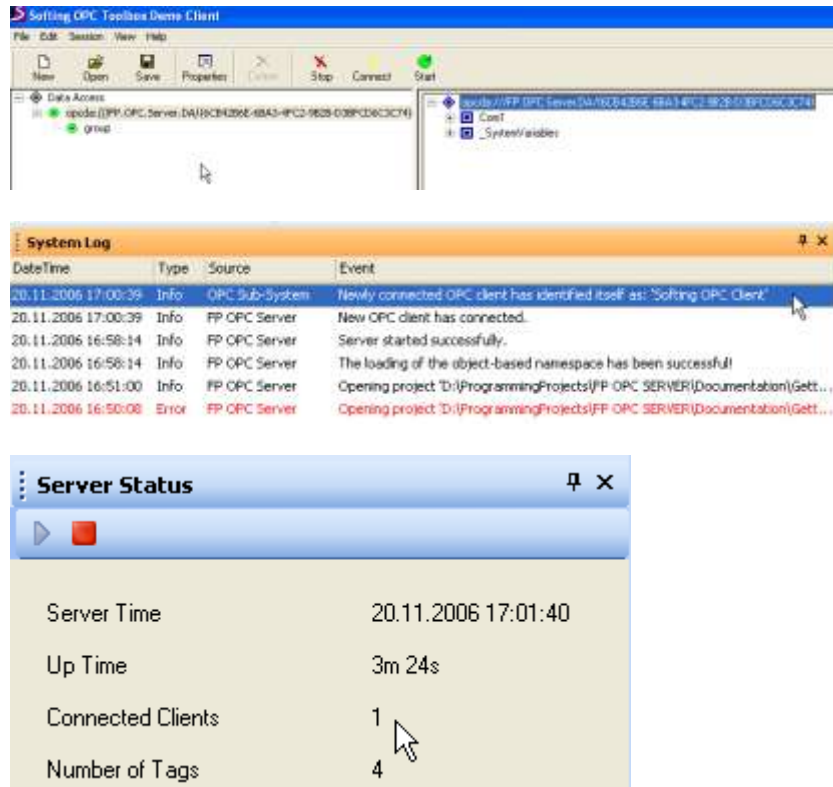
2.8.1 Start the Server

You will be notified when the server has been started successfully by:


- a log message (see p. 48) in the system log pane and
- an incrementing "Up Time (see p. 49)" value in the server status pane (see p. 49).



You can also see that a client is connected (here the Softing Demo Client) in the system log and server status panes.

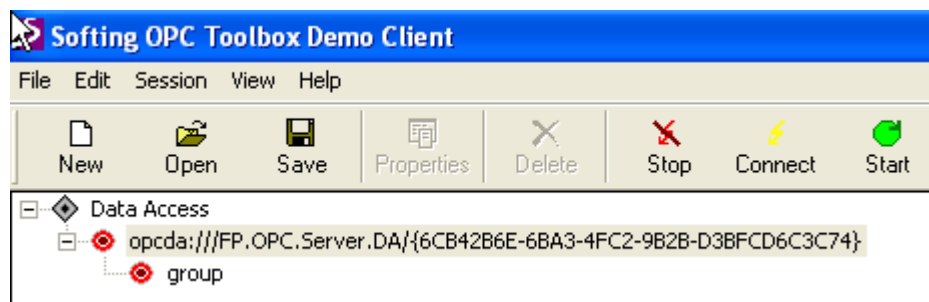


2.8.2 Stop the Server

To stop the OPC subsystem, press .


Note

All connections to OPC clients are terminated.



Now the demo client has been disconnected. A log message informs you that

the OPC client has been disconnected and that the server has stopped.



DateTime	Type	Source	Event
20.11.2006 17:02:32	Info	FP OPC Server	Server stopped successfully.
20.11.2006 17:02:29	Info	FP OPC Server	OPC client has disconnected.
20.11.2006 17:00:39	Info	OPC Sub-System	Newly connected OPC client has identified itself as: 'Softing OPC Client'
20.11.2006 17:00:39	Info	FP OPC Server	New OPC client has connected.
20.11.2006 16:58:14	Info	FP OPC Server	Server started successfully.
20.11.2006 16:58:14	Info	FP OPC Server	The loading of the object-based namespace has been successful!
20.11.2006 16:51:00	Info	FP OPC Server	Opening project 'D:\ProgrammingProjects\FP OPC SERVER\Documentation\Getting...
20.11.2006 16:50:08	Error	FP OPC Server	Opening project 'D:\ProgrammingProjects\FP OPC SERVER\Documentation\Getting...

2.9 Transferring Project Information

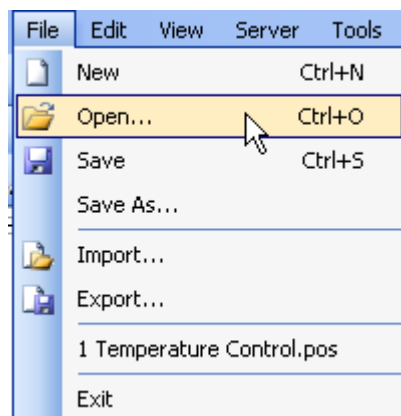
You can save project data in XML or CSV format and exchange tag data between various OPC servers, e.g. Kepware or Beijers. You can also import global variables from Control FPCWIN Pro in CSV format.

2.9.1 Open/Save Project

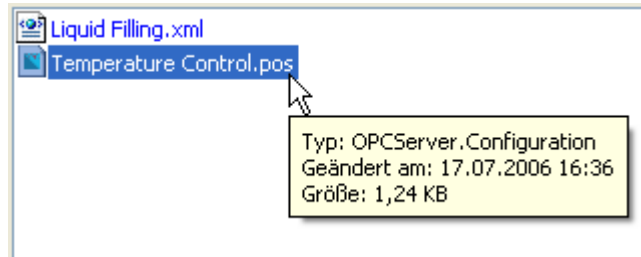
Procedure

Open Project

1. Select **File** → **Open** or  from the toolbar

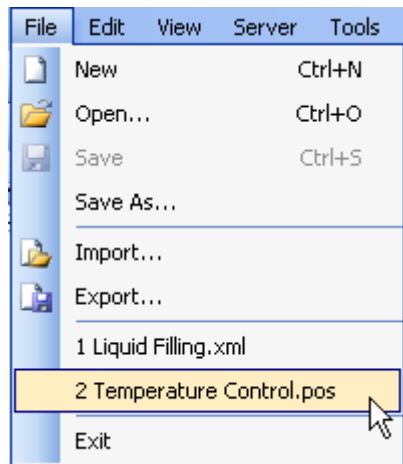


In the file open dialog all supported file formats (*.pos, *.xml) are displayed.



2. Select the desired file and click [Open]

Alternatively, select a file from the recently opened file list.

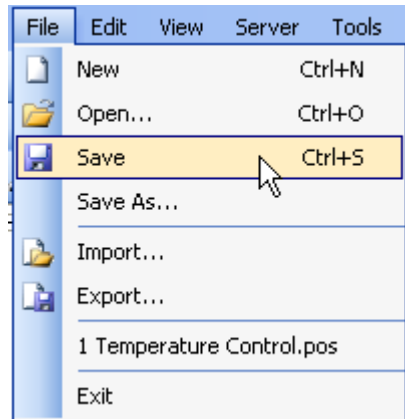


Note

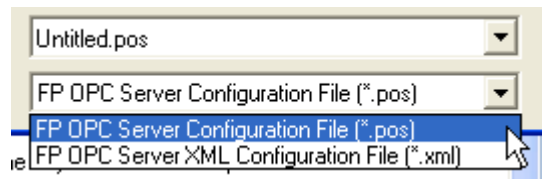
If no default project is specified in the options dialog, the most recently used project is automatically loaded when the client application starts the OPC server.

Save Project

1. Select **File** → **Save** or **Save As...** or  of the toolbar



The file save dialog opens:



2. Specify the project file name and file type (binary (*.pos) or XML (*.xml) format)
3. Select [Save]

2.9.2 Import/Export Tag Data

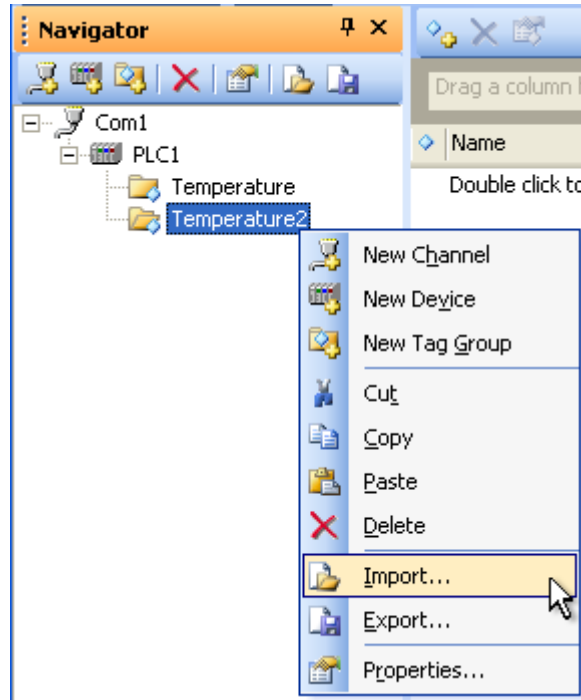
In order to exchange, import, export or edit tag data, an export/import mechanism is available.

Procedure

Import tag data

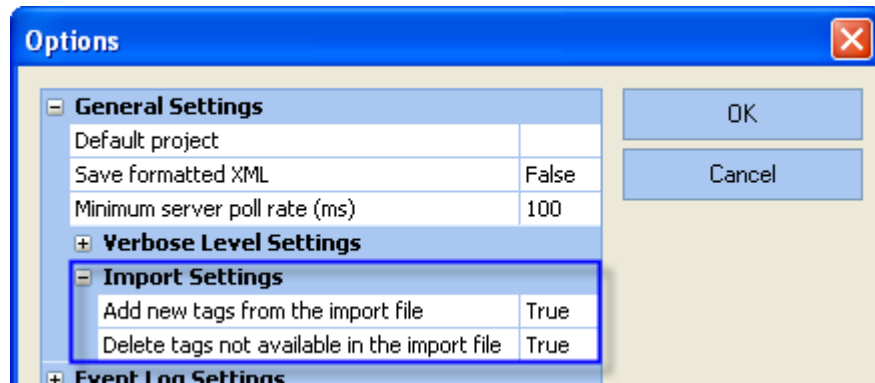
1. Select the device or tag group element for which you want to import data

2. Select "Import" from the pop-up menu, the File menu or the navigator's toolbar



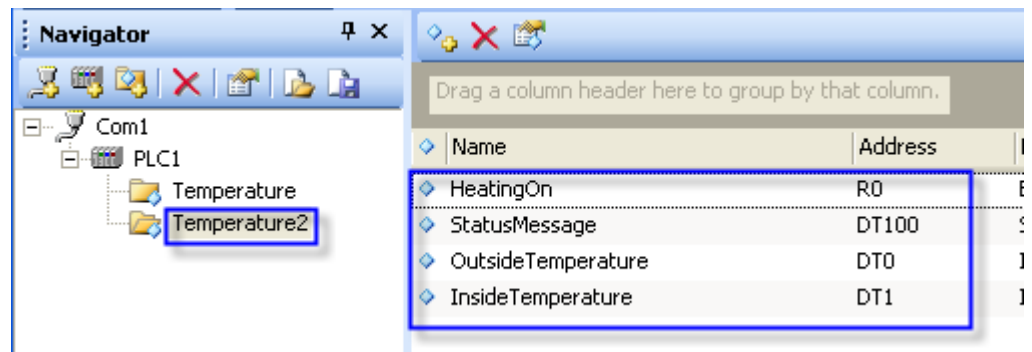
3. In the "File Open" dialog, select the XML or CSV file you want to import
According to the import settings under **Tools** → **Options**, you can select whether:

- tags available in the import file but not in the project are added to the project
- tags not available in the import file but in the project are deleted from the project:



Tags available in the import file and in the project will be updated.

The data is imported into the selected device or tag group item.



Import other file formats

The OPC Server can import global variables exported from FPWIN Pro or tag data exported from OPC Servers (Panasonic FP OPC Server, Kepware OPC Server, Beijers OPC Server). The various file formats are displayed below.

FPWIN Pro

```

FPWINPro Export.csv - Editor
Datei Bearbeiten Format Ansicht ?
Field 1;Field 2;Field 3;Field 4;Field 5;Field 6;Field 7
VAR_GLOBAL;HeatingOn;%MW0.0.0;R0;BOOL;FALSE;"Activates the Heating."
VAR_GLOBAL;StatusMessage;%MW5.100;DT100;STRING[30];"";"displays the current status."
VAR_GLOBAL;outsideTemperature;%MW5.0;DT0;INT;0;"The temperature of the courtyard."
VAR_GLOBAL;InsideTemperature;%MW5.1;DT1;INT;0;"The temperature inside the building."
VAR_GLOBAL;:::::""
    
```

Kepware OPC Server

```

Kepware OPC Server Tag Export.csv - Editor
Datei Bearbeiten Format Ansicht ?
Tag Name,Address,Data Type,Respect Data Type,Client Access,Scan Rate,Scaling,Raw Low,Raw Hig
"HeatingOn","R1.A",Boolean,1,R/W,100,,,,,,,,,"Activates the Heating."
"InsideTemperature","DT1",Short,1,R/W,100,,,,,,,,,"The temperature inside the building."
"OutsideTemperature","DT0",Short,1,R/W,100,,,,,,,,,"The temperature of the courtyard."
    
```

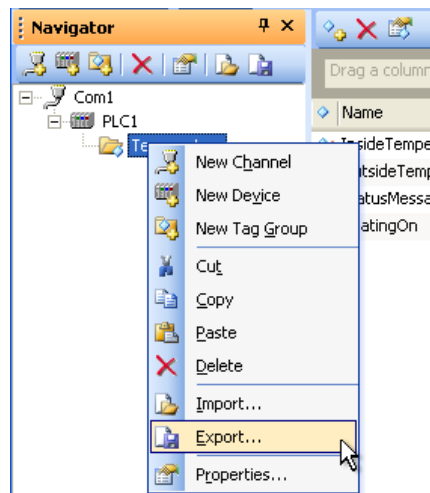
Beijer OPC Server

```

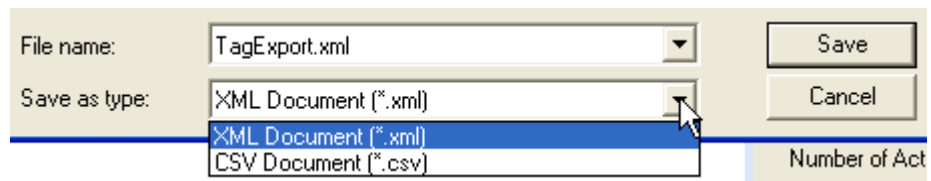
Beijer OPC Server Tag Export.txt - Editor
Datei Bearbeiten Format Ansicht ?
3,R1A,11,Activates the Heating.,HeatingOn,200,1,
3,DT1,2,The temperature inside the building.,InsideTemperature,200,1,
3,DT0,2,The temperature of the courtyard.,OutsideTemperature,200,1,
3,DT100,8,displays the current status.,StatusMessage,200,1,
    
```


Export tag data

1. Select the device or tag group element you want to export
2. Select "Export " from the pop-up menu, the File menu or the navigator's toolbar



3. Specify the file name and type



4. Select where you wish to save the file
5. Select [Save]

Now you can edit the file if desired, e.g. with a text editor:

Example for tag data exported in XML format

```

TemperatureTagExport.xml - Editor
Datei Bearbeiten Format Ansicht ?
<?xml version="1.0" encoding="UTF-8"?>
<FPOPCServerTags CompactMode="1" TotalElementCount="4">
  <Tags Name="InsideTemperature" AccessType="Read/write" Address="DT1" Description="The temperature inside the building.">
  <Tags Name="OutsideTemperature" AccessType="Read/write" Address="DT0" Description="The temperature of the courtyard.">
  <Tags Name="StatusMessage" AccessType="Read/write" Address="DT100" Description="Displays the current status.">
  <Tags Name="HeatingOn" AccessType="Read/write" Address="R0" Description="Activates the heating.">
</FPOPCServerTags>
    
```

Example for tag data exported in CSV format

```

TemperatureTagExport.csv - Editor
Datei Bearbeiten Format Ansicht ?
Name;AccessType;Address;Description;DataType;PollRate;Scaling;Enabled;
InsideTemperature;Read/write;DT1;The temperature inside the building.;Integer;100;0;1;
OutsideTemperature;Read/write;DT0;The temperature of the courtyard.;Integer;100;0;1;
StatusMessage;Read/write;DT100;Displays the current status.;String;100;0;1;
HeatingOn;Read/write;R0;Activates the heating.;Boolean;100;0;1;
    
```

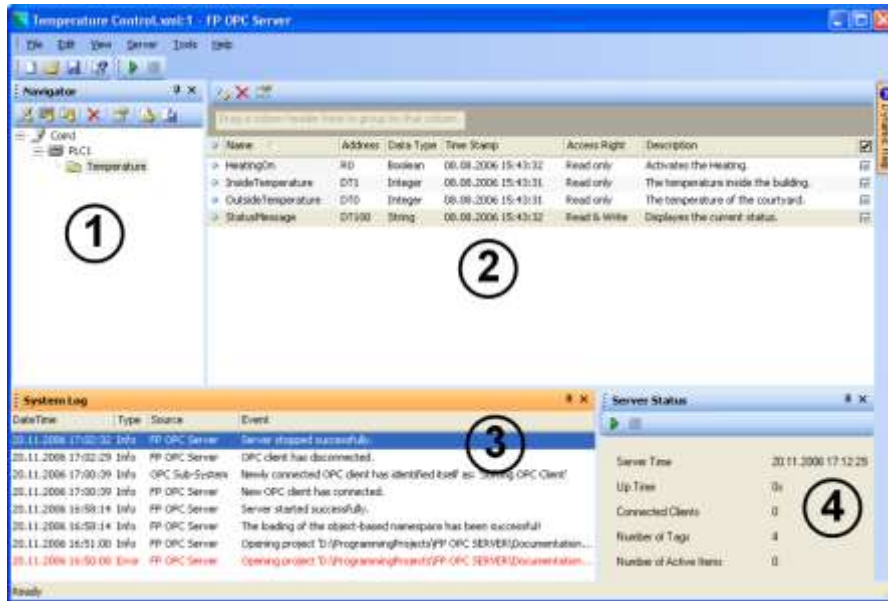
Chapter 3


Graphical User Interface (GUI)

3.1 Configure the Working Area

The FP OPC Server configuration user interface consists of various panes. All panes offer a pop-up menu and you can access most functions related to the panes with toolbar icons. For each item in the panes, context sensitive help can be displayed in the help pane (see p. 51). Tool tips assist the user in understanding the topics when the cursor passes over them. You can dock all panes except the tag pane (see p. 46) \mathbb{W} . You can close unneeded panes to enlarge the working area. Use the view menu (see p. 44) to display the panes after they have been closed.

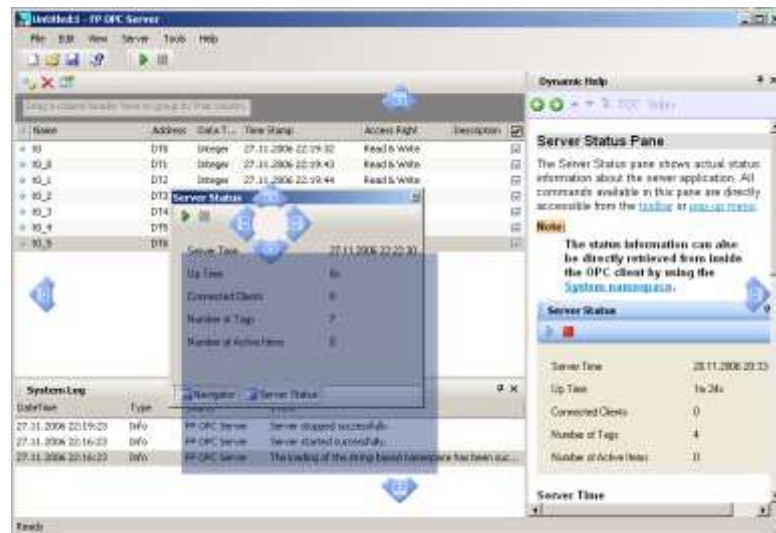
You can resize and move the entire application anywhere on the desktop. All user-defined layout settings, pane status and window position are saved upon closing and restored when the server is restarted.



- Q The navigator pane (see p. 46) shows the hierarchical structure of channel, device and tag group elements. Elements of these types can be created and changed in this pane.
- W The tag pane (see p. 46) is where tag elements are created or updated.
- E The system log pane (see p. 48) shows the latest log messages, such as server status messages, client connections or connection timeouts and informs the user about these events.
- R The server status pane (see p. 49) shows the server status information.
-  The help pane (see p. 51) displays the online help. You can temporarily slide open the pane by moving the mouse over the icon. Click on the icon if you prefer the pane to stay visible.

Customize your working area

You can move or dock all panes except the tag pane anywhere in the window.



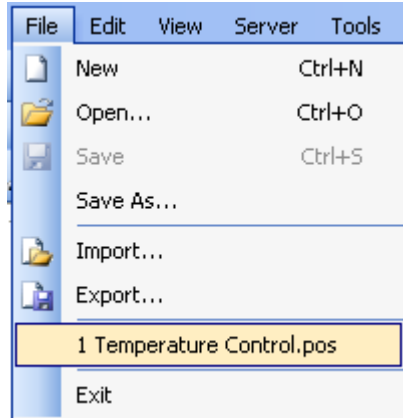
3.2 Menu Names and Commands

File Edit View Server Tools Help

The menu bar contains 6 menu names shown above. Please refer to the online help for detailed information under the keyword of the respective menu name.

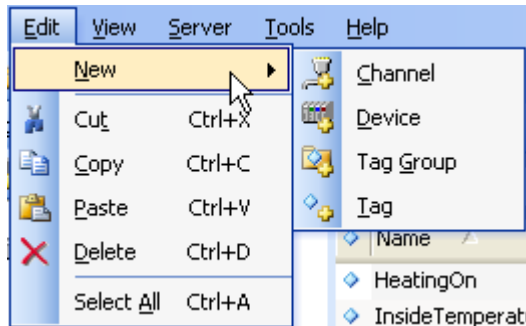
3.2.1 File Menu

The File menu offers access to all file and project operations.



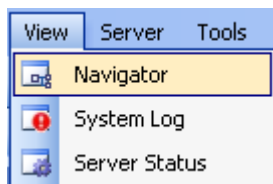
3.2.2 Edit menu

The Edit menu allows you to create new channels, devices, groups and tags as well as execute the standard Windows editing commands: cut, copy, paste, delete and select all.



3.2.3 View Menu

Display the navigator (see p. 46), system log (see p. 48) and server status panes (see p. 49) via this menu if they are hidden.



Note

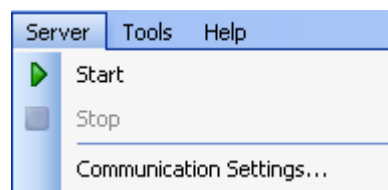
Display the help pane via the help menu (see p. **45**).

Further information:

- Configure the working area (see p. 41)

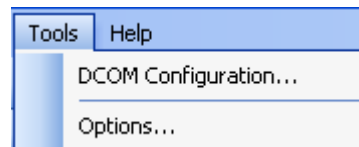
3.2.4 Server Menu

The Server menu contains commands to control the server and set global communication parameters.



3.2.5 Tools Menu

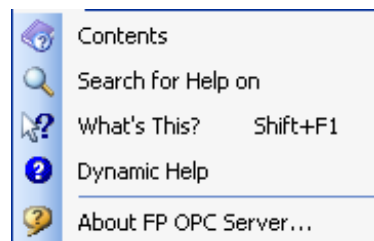
The Tools menu offers commands to start configuration and option dialogs.



3.2.6 Help Menu

The help menu contains commands to access the online documentation, which can be displayed inside the application or as an external help window.

See also help pane (see p. 51).

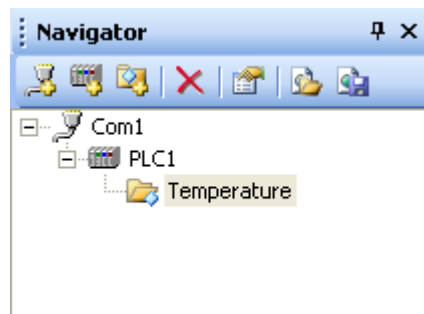


3.3 Panes

The FP OPC Server user interface contains 5 panes described as follows.

3.3.1 Navigator Pane

The navigator pane shows channel, device and tag group elements in a hierarchical structure. A wizard (see p. 51) starts at each level to help you create new elements. To update existing elements, simply double-click the item; a wizard will appear in this case, too. You can directly access all commands available in this pane via the toolbar or pop-up menu.




Drag&Drop allows you to conveniently move device elements and tag group elements.

Note

On each hierarchical level, the name of the element has to be unique! For instance, only one channel element can be named "Com1".

For a detailed description of the navigator pane, please refer to the online help under the keyword "Navigator pane".

3.3.2 Tag Pane

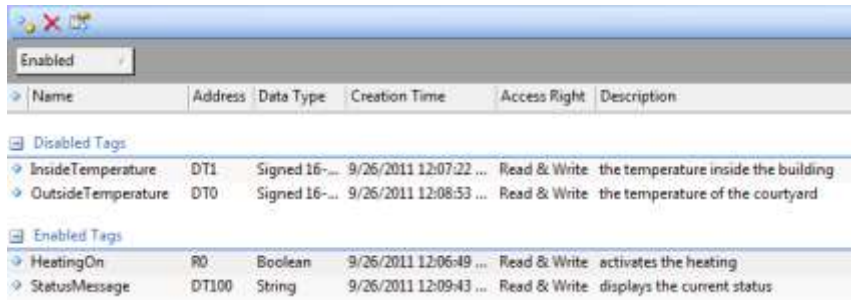
The tag pane shows the **tag elements**  in a list structure. A wizard (see p. 54) is started to help you create new elements. To update existing elements, simply double-click the item to open the wizard. You can make direct changes to the tag elements in the list by placing the cursor in the list cell or selecting an item from the combo box lists. To ease handling of many items, multiple rows can be selected and changes applied to all selected elements. The list

shows all properties of the tag element in a clearly arranged manner. All commands available in this pane are directly accessible from the toolbar or pop-up menu.



Column number	Column Header	Explanation
Q		Shows the status of the element: <ul style="list-style-type: none"> correct warning error Hint: check the tool tip for help on configuring the element correctly.
W	Name	Shows the tag's name Each tag element that is child to the same parent must have a unique tag name, e.g. only one tag can be named "OutsideTemperature".
E	Address	Shows the element's address (see p. 69)
R	Data Type	Shows the element's data type (see p. 70)
T	Creation Time	Displays the creation time and date
Y	Access Right	Shows the access rights of the tag
U	Description	Allows you to enter a description for the tag
I		You can disable elements by deactivating this check box (multiple selection with <Ctrl> and/or <Shift>). Disabled elements are not visible inside the OPC client.

Arrange elements in meaningful groups



For example, you wish to group elements by their enabled or disabled state. Simply drag the column header inside the field "Drag a column header ...".

You can also sort the list of tag items by simply clicking on the column header.

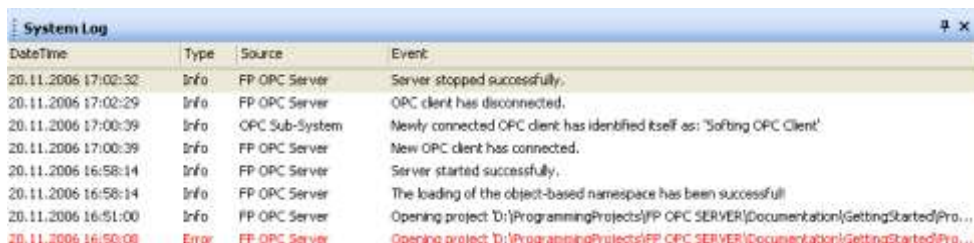
Note

To deselect multiple selected rows, simply click into column **W** or **E**. Only the currently selected row will remain selected.

For a detailed description of the tag pane, please refer to the online help under the keyword "Tag pane".

3.3.3 System Log Pane

The system log pane displays information, warnings and error event messages.



For example, information about server start and stop events, client connects and disconnects are data time-outs are displayed. While the server application is running, log information is written into a log file. The log file path can be changed under **Tools** → **Options**.

See also: Configure the working area (see p. 41).

3.3.4 Server Status Pane

The server status pane shows actual status information about the server application. All commands available in this pane are directly accessible from the toolbar or pop-up menu.

Note

The status information can also be directly retrieved from inside the OPC client by using the System namespace (see p. 66).



The screenshot shows a window titled "Server Status" with a toolbar containing a play button and a red square. Below the toolbar is a table with the following data:

Server Time	20.11.2006 20:33:51
Up Time	1m 24s
Connected Clients	0
Number of Tags	4
Number of Active Items	0

Server Time

The server time indicates the actual date and time of the server hosting system.

Up Time

The Up Time property is available when the server is running and displays how long the server has been up in "xxd(ays) xxh(ours) xxm(inutes) xxs(econds)".

Connected Clients

The number of connected OPC clients is displayed.

Number of Tags

"Number of Tags" shows the total number of tags created within all devices and tag groups.

Note

All tags including disabled elements are counted.

Number of Active Items

The number of tags actively monitored within any of the OPC clients (created as Items) is displayed.

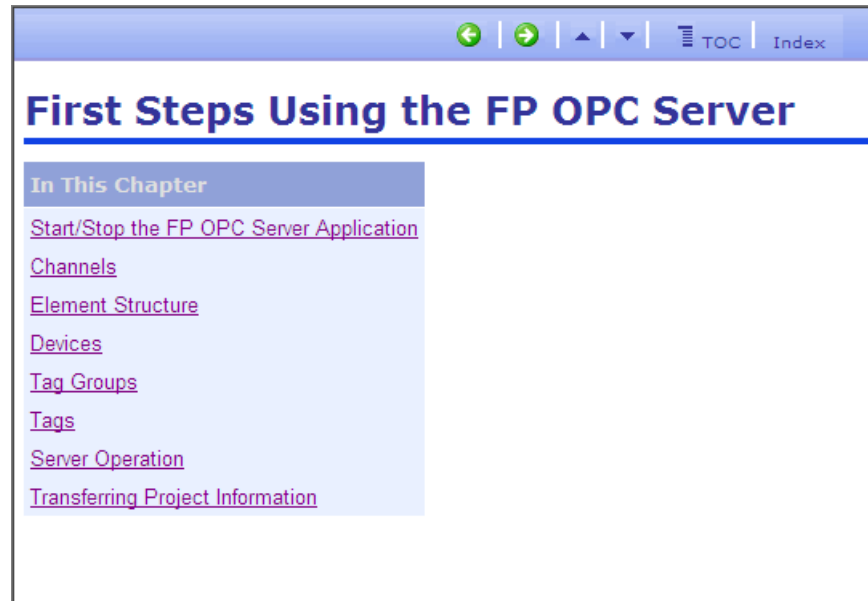
Note

The total number of tag instances is counted; if one client monitors the same element twice or two clients monitor the same element, the property counts both elements.

For a detailed description of the Server status pane, please refer to the online help under the keyword "Server status pane".

3.3.5 Help Pane

The help pane can be docked and reacts context-sensitively to the current mouse or cursor position. You can “pin” it open or have it slide open and closed by passing the cursor over it.



See also: Help menu (see p. 45).

3.4 Toolbars

Each of the panes (see p. 46) in the FP OPC Server's configuration user interface (see p. 41) contains a toolbar that allows you easy access to all commands available within the pane.

For a detailed description of the toolbar functions, please refer to the online help under the keyword "Toolbars".

3.5 Wizard

To simplify creating and modifying namespace elements (see p. 64), a

wizard-like configuration dialog has been implemented. The wizard is opened to help you create a new element when you have double-clicked a dummy element (see also dummy element of tag pane). You can likewise modify an existing element's properties by double-clicking on the element. The wizard also opens when you execute similar commands via the menu, pop-up menu or toolbar (see p. 51) icon.

Enter text

On the left side of the dialog text input fields, you must enter an element name, for example. If the text you have entered is wrong, the field turns red and a tool tip assists you with an error message.

Buttons

On the right side, the buttons, such as [OK], [Cancel] and - if available - the navigation buttons [Next] and [Previous] can be found. By pressing [Next], the next page (also accessible via a tab flag) is displayed.

Help

At the bottom of the dialog, the omnipresent, context-sensitive online help can be found embedded. By selecting another control, for instance the next edit field, the help automatically displays the corresponding help page.

3.5.1 New Channel Wizard

When you create or modify a channel element, the wizard is started in "(new) channel mode". You can view or modify an existing element, or create a new element.

The first page identifies the channel element. The channel's name is specified here.

On the second page, you select the I/O driver. If you have selected the MEWNET driver, a third page allows to you to edit the communication settings.

For detailed information, please refer to the online help under the keyword "New Channel Wizard".

3.5.2 New Device Wizard

When you create or modify a device element, the wizard is started in "(new) device mode". You can view or modify an existing element, or create a new element.

The wizard shows the identification page of the device element. The device's name and station number are specified here.

For detailed information, please refer to the online help under the keyword "New Device Wizard".

3.5.3 New Tag Group Wizard

With the Tag Group Wizard, you can view or modify an existing tag group element, or create a new element.

The wizard shows the identification page of the tag group element.

For detailed information, please refer to the online help under the keyword "New Tag Group Wizard".

3.5.4 New Tag Wizard

When you create or modify a tag element (see p. 46), the wizard is started in "(new) tag mode". You can view or modify an existing element, or create a new element.



The wizard shows the identification page of the tag element. The tag's name, address, data type, access type and enabled state is set here.

For detailed information, please refer to the online help under the keyword "New Tag Wizard".

3.6 Project Information Input/Output

Load/Save The Project

To save a new project or change an existing project, data can be stored in a project file on the hard disk in *.pos or *.xml format.

For further information on loading and saving project data, please refer to Open/Save Project (see p. 35).

Import/Export Tag Information

Tag group and tag elements can be exported to an XML (*.xml) or CSV (*.CSV) file. The CSV file is compatible with the GVL CSV export file of FPWIN Pro. Project data (tags) can also be exchanged with other OPC server providers. For further information, please refer to: Import/Export Tag data (see p. 37).

3.7 Communication Settings Dialog

You can set communication parameters if you are using the MEWNET driver or if you want to configure the MEWTOCOL compatibility namespace (see p. 66). The following communication types are provided:

- Serial
- Modem
- Ethernet
- USB

3.7.1 Serial Communication Settings

If "C-Net (RS232)" is selected as the network type, the following dialog appears.

Communication Setting - FP OPC Server

Network type: C-NET(RS232C)

COM port: COM1

Baud rate: 57600 bps

Data length: 7 bits 8 bits

Stop bit: 1 bit 2 bits

Parity: Non Odd Even 0

Time-out: 20 sec

Parameter for automatic setting

- Baud rate
- Data Length
- Parity

Buttons: OK, Cancel, Initialize, Help

Parameter	Description
COM Port	Select a COM port
Baud Rate	Depending on the PLC used, choose a baud rate between 1200 and 115200 for communication between PLC and PC. Default is 9600 bps.
Data length	Select either 7 bits or 8 bits. (Default: 8 bits)
Stop Bit	Select either 1 bit or 2 bits. (Default: 1 bit)
Parity	Select from None, Odd, and Even. (Default: Odd)
Time-out	Set the time allowed (0-60 sec.) for communication to be established with the PLC. (Default: 5 sec.)
Parameter for automatic setting:	Activate the check box for the matching condition you want to search for when the communication parameters differ from the PLC. (Default: all check boxes are activated.) If no check box is activated, FPWIN Pro will not automatically search for suitable communication parameters.

Note

If the check box for "Parameter for automatic setting" is not activated, FP OPC Server will not automatically search for suitable communication parameters.

You can also connect to a PLC network. The settings to be made depend on the PLC type and kind of connection. The FP OPC Server automatically searches for the suitable parameters unless you have deactivated this feature. Please also refer to the corresponding hardware manuals.

3.7.2 Modem Communication Settings

If you select "MODEM" as the network type, the following dialog appears:

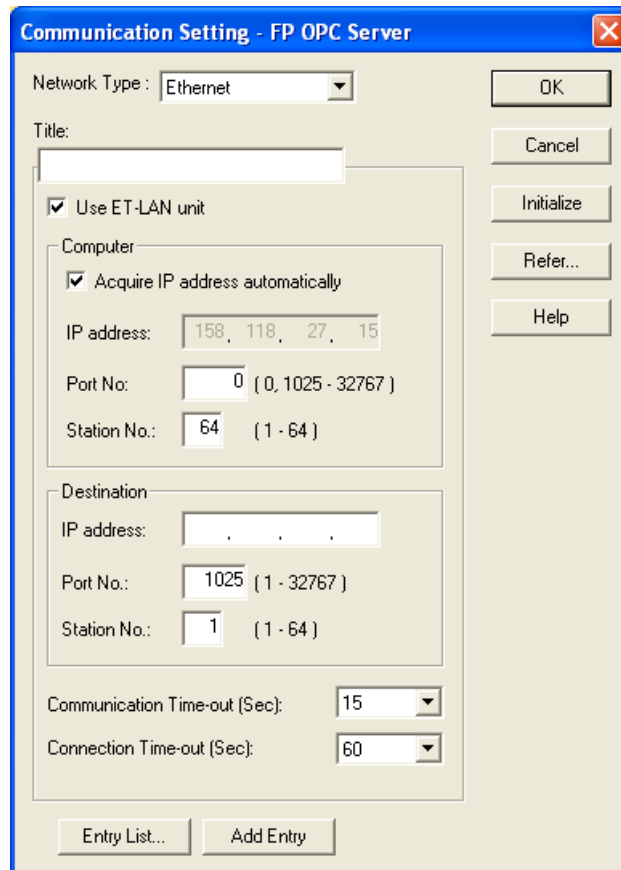
Parameter	Description	Default
COM Port	Select from COM1-COM5 via which the modem is connected.	COM1
Dial mode	Select the dial mode (pulse, tone or self-defined) used by the modem.	Pulse
Initial AT command	A modem manufacturer database is available which lists many standard modem models with their initialization strings.	ATV1E0S0=1S2=43
Title	Enter a title for the communication settings set.	
Telephone number	Enter the telephone number to dial.	
[Connect]	Click [Connect] to establish the connection.	
[Disconnect]	Click [Disconnect] to terminate a previously started connection.	
Baud Rate	Depending on the modem used, choose a baud rate between 1200 and 115200 for communication between PLC and PC.	9600bps

Parameter	Description	Default
Data length	Select either 7 bits or 8 bits.	8bits
Stop Bit	Select either 1 bit or 2 bits.	1bit
Parity	Select from None, Odd or Even.	Odd
[Add Entry]	Click [Add Entry] to save the connection in the entry.	
[Entry List]	When clicking on [Entry List] you can select, modify or delete an entry made before.	
Time-out	Set the time allowed (0-60s) for communication to be established with the PLC.	5s
Public Line Time-out	Set the time allowed (0-60s) for communication to be established to the communication partner.	

The FP OPC Server can communicate with a peripheral controller that is connected via modem. When the server communicates with a Panasonic PLC, a modem can be attached directly to the CPU (except for FP1 C14/C16).

3.7.3 Ethernet Communication Settings

If "Ethernet" is selected as "Network type", the following dialog appears.



Set the communication parameters using Ethernet according to your

Hardware. This connection is based on TCP/IP protocol.

Ensure you are familiar with IP addresses, ET-LAN units and Ethernet before using this connection. Especially when using the ET-LAN unit, understand the "ET-LAN SYSTEM Technical Manual" fully, and use the same settings on your computer.

Set or change the following parameters if necessary:

Parameter		Description
Use ET-LAN unit		Check the checkbox when you use the ET-LAN unit. Do not check the checkbox when using the Ethernet-RS232C converter, etc., for example.
Title		Enter a title up to 38 characters long.
Computer:	IP address	Set automatically. If not displayed, set properties of TCP/IP from network setting in control panel. (The setting procedure differs depending on the operating system used. Please refer to the Manuals and Help of OS.)
	Port No.	Specify a value between 1025 and 32767 in decimal format (default: 1025). The Port No. for the IP address must be a unique, i.e. it cannot be used twice on your computer.
	Station No.	Specify a value between 1 and 64 in decimal format (default: 64). Specify a Station No. different from the destination Station No. (PLC) that follows. (If ET-LAN unit is not used, Station No. is ignored.)
Destination:	IP address	Specify IP address of destination (PLC) to communicate with.
	Port No.	Specify a value between 1 and 32767 in decimal format (default: 1025) different from above.
	Station No.	Specify a value between 1 and 64 in decimal format (default: 1). Specify a Station No. different from the computer's Station No. above. (If ET-LAN unit is not used, Station No. is ignored.)
Communication Time-out		Specify a value between 1 and 950 seconds (default: 10).
Connection Time-out		Specify a value between 1 and 180 seconds (default: 60).

Descriptions of Buttons:

[OK]	Click [OK] to save the communication settings; the current settings are not entered into the Entry List. If you want to enter them into the Entry List, click [Add Entry] before clicking [OK].
[Initialize]	To reset the current setting's parameters to the initial settings, click [Initialize].
[Refer...]	When another program (an PEW application) is communicating with the PLC via the Ethernet and you want to connect to the same PLC, click [Refer...]. Then you can connect to the PLC easily by selecting the task in the TCP/IP Run List. No complicated procedure is required. Refer to the other task's settings for details.
[Entry List...]	To reuse parameters registered in the Entry List, click [Entry List...]
[Add Entry]	To add the current setting parameters to the Entry List, click [Add Entry].

3.7.4 Ethernet (Local) Communication Settings

The "Ethernet (Local) Communication Settings" dialog is only available via **Server** → **Communication Settings** and can be configured using the MEWTOCOL OPC Server Compatibility Namespace (see p. 66) only.

Note

You can only change the communication parameters for the OPC Server if the OPC subsystem has not been started (see Start/Stop the FP OPC Server Application (see p. 20)).

Communication Setting - FP OPC Server

Network type: Ethernet (Local) [v] [OK]

Computer

Acquire IP address automatically

IP address: 158, 118, 99, 58

First port No.: 0 (0, 1025 - 32704)

Station No.: 64 (1 - 64)

Use LinkUnit Station Number

Destination station No.	Destination IP address	Destination
01	162.145.101.4	

[Add...] [Change...] [Delete]

Communication Time-out (Sec): 15 [v]

Connection Time-out (Sec): 60 [v]

[Cancel] [Initialize] [Help]

Set the communication parameters using Ethernet according to your Hardware. This connection is based on TCP/IP protocol.

Ensure you are familiar with IP addresses, ET-LAN units and Ethernet before using this connection. Especially when using the ET-LAN unit, understand the "ET-LAN SYSTEM Technical Manual" fully, and use the same settings on your computer.

Set or change the following parameters if necessary:

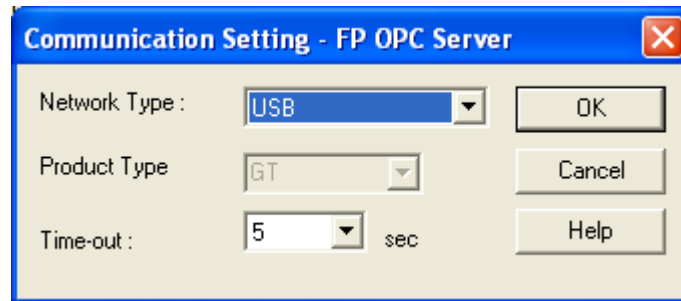
Parameter		Description
Computer:	IP address	Set automatically. If not displayed, set properties of TCP/IP from network setting in control panel. (The setting procedure differs depending on the operating system used. Please refer to the manuals and help of the OS.)
	Port No.	Specify a value between 1025 and 32767 in decimal format (default: 1025). The Port No. for the IP address must be a unique, i.e. it cannot be used twice on your computer.
	Station No.	Specify a value between 1 and 64 in decimal format (default: 64). Specify a Station No. different from the destination Station No. (PLC) that follows. (If ET-LAN unit is not used, Station No. is ignored.)
Use LinkUnit Station Number		Activated: only one entry for a destination is possible Deactivated: you get access to the destination entry list to re-use parameters already entered
Destination:	Use ET-LAN unit	Check the checkbox when you use the ET-LAN unit. Do not check the checkbox when using the Ethernet-RS232C converter, etc., for example.
	IP address	Specify IP address of destination (PLC) to communicate with.
	Port No.	Specify a value between 1 and 32767 in decimal format (default: 1025) different from above.
	Station No.	Specify a value between 1 and 64 in decimal format (default: 1). Specify a Station No. different from the computer's Station No. above. (If ET-LAN unit is not used, Station No. is ignored.)
Communication Time-out		Specify a value between 1 and 950 seconds (default: 10).
Connection Time-out		Specify a value between 1 and 180 seconds (default: 60).

Descriptions of Buttons:

[OK]	Save the communication settings.
[Initialize]	To reset the current setting's parameters to the initial settings, click [Initialize].
If "Use LinkUnit Station Number" is deactivated	
[Add]	Add a new entry to the entry list.
[Change]	Select a line and click [Change] to change the parameters of the selected entry.
[Delete]	Select a line and click [Delete] to delete the selected entry.

3.7.5 USB Communication Settings

If "USB" is selected as the network type, the following dialog appears. Using this setting you can configure transparent PLC communication via the USB port of a GT panel.



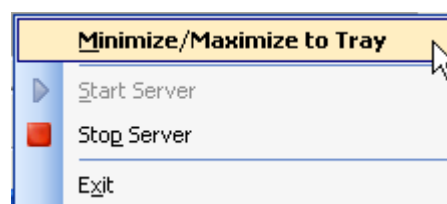
Specify a time-out value between 1s and 60s (default 5s).

3.8 System Tray

When the server application is started, a tray icon appears in the window's system tray. The icon offers easy access to the main server functions, such as starting and stopping the server and maximizing or exiting the application.

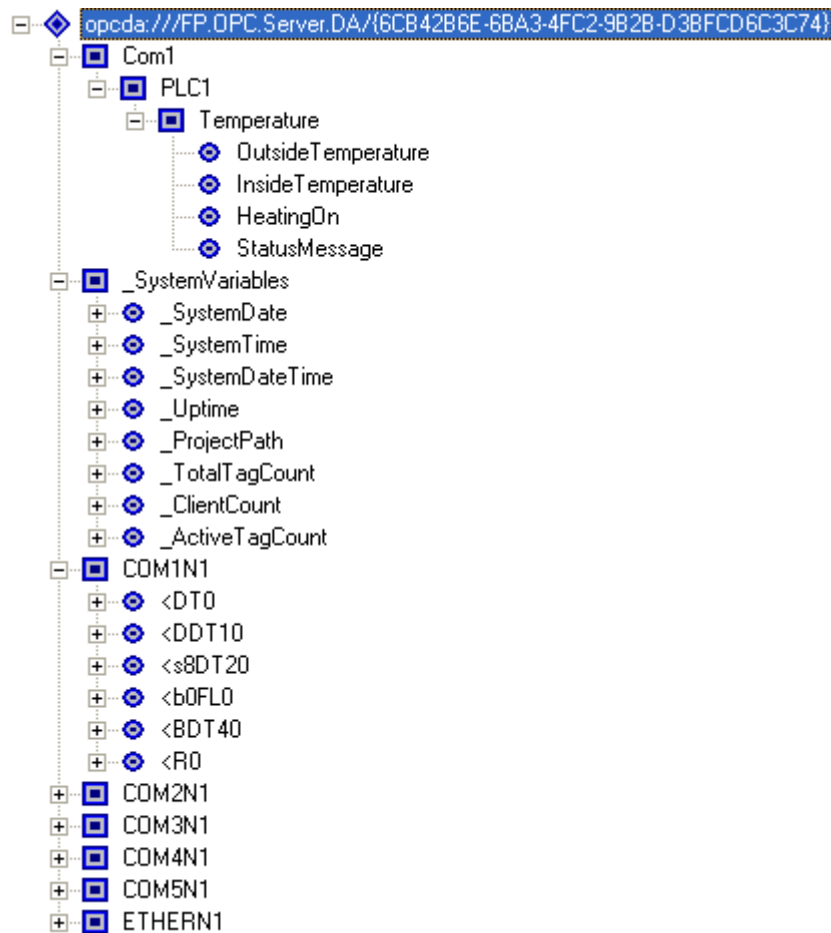


In case of an automatic start, i.e. the OPC client starts the FP OPC Server, the OPC Server is minimized to the tray only. To maximize the Configuration User Interface, either double-click on the FP OPC Server tray icon or select "Minimize/Maximize to Tray" from the System Tray menu.



4.1 Introduction to Namespaces

A namespace is a hierarchical tree structure of elements. Namespaces are set up within the server and can be browsed for with an OPC client application.



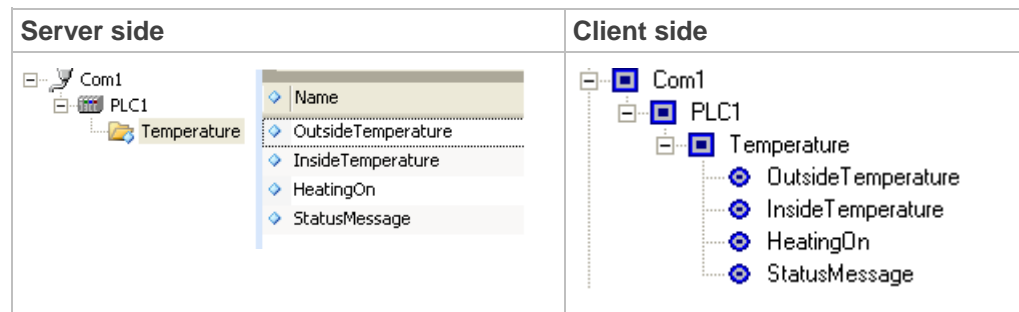
Three different namespaces can be built within the server:

1. User-defined manual namespace (see p. 65)
2. System status namespace (see p. 66)
3. MEWTOCOL OPC Server compatibility namespace (see p. 66) that ensures backward compatibility with the previous MEWTOCOL OPC Server.

4.2 Static, Manually Defined Namespace

The static namespace has to be defined by the user in the FP OPC Server configuration user interface as described in the previous chapters (left hand image).

The root elements in the tree are the channel elements, which embody the means of communication, i.e. the communication line.



Each channel element can contain device elements, which represent the devices where the data sources are located. On the next level, tag group combine elements in a way that makes sense for the particular application. The leafs of the tree are the tag elements (see p. 46). These elements directly represent the data sources offered to the OPC client application.

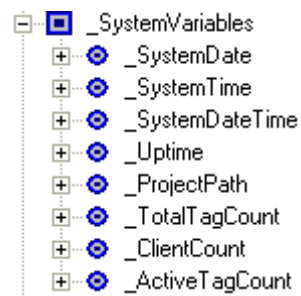
On the right, the namespace representation within the OPC client can be seen.

Note

You cannot use elements named COMXXNXX or ETHERNXXNXX (e.g. COM1N64) in accordance to the regulations of MEWTOCOL OPC Server Compatibility Namespace (see p. 66).

4.3 System Status Namespace

The system status namespace provides the client application with general feedback about the server.



For a detailed description of the read only tags, please refer to the online help under the keyword "System Status Namespace".

4.4 MEWTOCOL OPC Server Compatibility Namespace

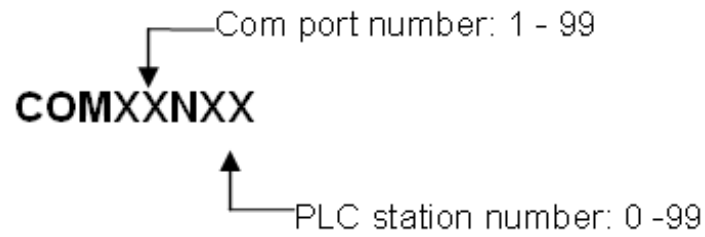
The previous OPC server, the MEWTOCOL OPC Server, did not support the definition of a static namespace (see p. 65). The Tags are accessed by defining the access path according to a certain syntax.

In order to be backward compatible, the FP OPC Server supports the MEWTOCOL OPC Server namespace. You must define the communication settings beforehand in the communication settings dialog (see p. 55) that opens via **Server** → **Communication Settings**.



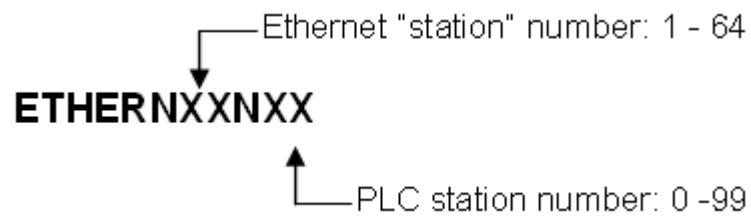
You must specify the communication channel on the first layer:

COM (serial and modem) communication



XX	The first two placeholders should specify the communication port to be used.
N	Optional. For C-NET must be "N".
XX	Optional. The second two placeholders specify the PLC station number if the PLC is connected via C-NET.

Ethernet communication



Note

For further information, please refer to Panasonic FP PLC Network Types (see p. **73**).

The second layer represents the Tag layer directly. Here, the item corresponding to the data source is created according to the following syntax conventions:

<[1][2][3][4]Address where:

Optional	Description	Values	Notes
[1]	Specifies a memory bank number	b0 to b15	If empty, no bank is specified.
[2]	Specifies the number of numerical data words. Specifies the number of character data words.	w1 (1 word) w2 (double word) s1 to s256	If empty, 1-word data types are used.
[3]	Specifies the Item as a real or BCD value.	Real: f BCD: B	If empty, the value is displayed as decimal
[4]	Specifies double word.	D	If empty, 1-word data types are used. D overrides w1 specified in [2]

Note

- In contrast to the MEWTOCOL OPC Server, modem connections can also be used via COMXXNXX nodes.
- This namespace can also be used to dynamically create item instances within the OPC client application.

5.1 Panasonic Addresses

Panasonic FP Series PLCs use addresses from which you can read data or to which you can write data. Both bit and word addresses are used.

5.1.1 Special Internal Relays

Special internal relays turn on and off under special conditions. The on and off states are not output externally. Writing is not possible with the FP OPC Server, a programming tool or an instruction.

Reference

For further information on special internal relays, please refer to the hardware manual of your Panasonic PLC.

5.1.2 Special Internal Data Registers

Special data registers are one word (16-bit) memory areas which store specific information. Writing is not possible with the FP OPC Server, a programming tool or an instruction.

Reference

For further information on special data registers, please refer to the hardware manual of your Panasonic PLC.

5.2 Panasonic Data Types

Panasonic's FP OPC Server supports several data types described hereafter.

Undefined - Undefined Data Type

An undefined data type is selected per default. If this data type is not changed, the OPC Server automatically adopts the data type according to the address of the variable.

Boolean - Boolean Data Type (1-bit)

Variables of the data type BOOL are binary variables. They can either have the value 0 or 1, and are 1 bit long.

Condition	Meaning	Explanation
0	FALSE	The variable is switched off, i.e. it is not set.
1	TRUE	The variable is switched on, i.e. it is set.

Signed 16-bit

Variable values of the data type Signed 16-bit are natural numbers without decimal places.

Range: -32768–32767

Unsigned 16-bit

Variable values of the data type Unsigned 16-bit are numerical numbers without decimal places.

Range: 0–65535

Signed 32-bit

Variable values of the data type Signed 32-bit are natural numbers without decimal places.

Range: -2147483648–2147483647

Unsigned 32-bit

Variable values of the data type Unsigned 32-bit are numerical numbers without decimal places.

Range: 0–4294967295

Word 16-bit

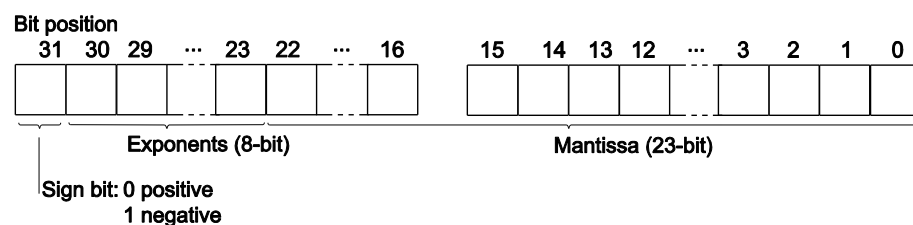
A variable of the data type Word 16-bit consists of 16 binary states. The switching states of 16 in/outputs can be combined in one word.

Word 32-bit

A variable of the data type Word 32-bit consists of 32 binary states. The switching states of 32 in/outputs can be combined in one double Word.

Float 32-bit

Variables of the data type Float 32-bit consist of real numbers or floating point constants and can include up to seven effective digits. The mantissa consists of 23 bits and the exponent of 8 bits (based on IEEE754).



Range: $-3.402823 \times E38$ to $-1.175494 \times E-38$, 0.0, $+1.175494 \times E-38$ to $+3.402823 \times E38$.

String - String Data Type (Variable Length)

The data type STRING consists of a series of up to 255 ASCII characters. All

ASCII characters are considered as characters.

BCD 16-bit

The BCD represents a code scheme for numbers that allows base-ten computer calculation instead of the more common base two. BCD manipulation preserves accuracy by reducing round-off errors. BCD encoding is performed by using a four-digit binary number to encode each digit of the base ten number.

BCD	Decimal
0000	0
0001	1
0010	2
0011	3
0100	4
0101	5
0110	6
0111	7
1000	8
1001	9

BCD 32-bit

The encoding of the BCD 32-bit is similar to the BCD 16-bit (see p. 72) data type, but instead of being 16 bits long, the BCD 32-bit consists of 32 bits.

Date

Variable values of the data type Date are date literals.

Range: 2001-01-01–2099-12-31

Date And Time

Variable values of the data type Date And Time are date and time literals.

Range: 2001-01-01-00:00:00– 2099-12-31-23:59:59

Time Of Day

Variable values of the data type Time Of Day are time of day literals.

Range: 00:00:00–23:59:59

5.3 Panasonic FP PLC Network Types

A Panasonic FP Series PLC can be connected to the PC in various ways. The PLC can be connected using the serial port (see p. 73) or Ethernet (see p. 74).

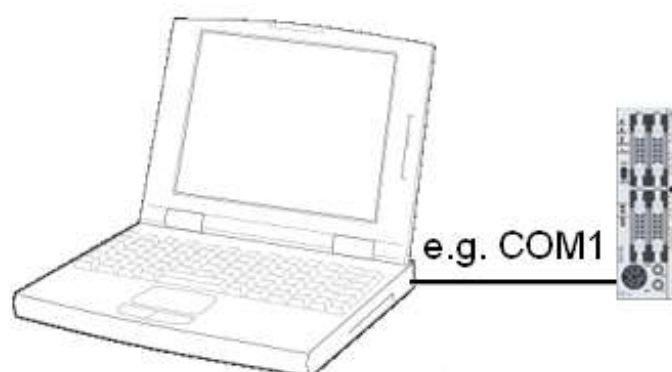
Reference

For further information on the different network types and how to connect and to wire the PLC, please refer to the appropriate hardware manual.

5.3.1 Serial Network

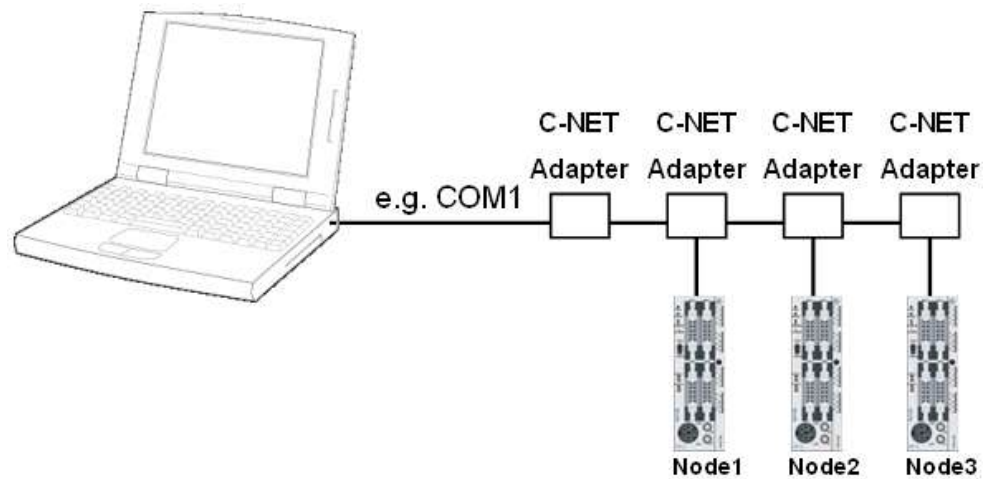
Direct connection

The PLC is directly connected to the PC using the serial communication line.



C-NET adapter connection

A maximum of 99 PLCs (FP-Sigma PLCs) can be connected to a single PC.



The access path is for example (using the MEWNET compatibility syntax):

- Node1: COM1N1
- Node2: COM1N2
- Node3: COM1N3

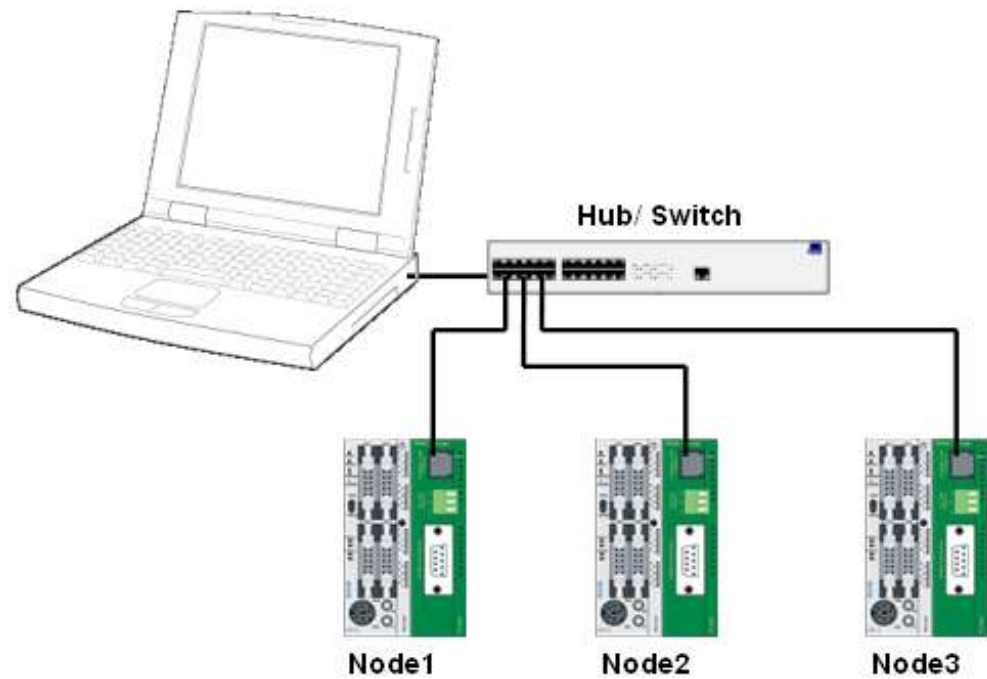
Note

This version of the FP OPC Server does not support the MEWNET W/W2 remote access.

5.3.2 Ethernet Network

PLCs can be connected to the PC via Ethernet.

Each PLC is connected to a HUB or SWITCH



The access path is for example (using the MEWNET compatibility syntax):

- Node1: ETHERN1
- Node2: ETHERN2
- Node3: ETHERN3

Note

This version of the FP OPC Server does not support the MEWNET W/W2 remote access.

5.4 DCOM Configuration

Starting with Windows XP Service Pack 2, Microsoft implemented a new security strategy. This step, amongst others, was needed to reduce XP's vulnerability to dangerous attacks from outside (e.g. the Internet). This was realized by shielding the computer from the network side and various other improvements.

In order to access the OPC Server from a client not installed on the same machine, DCOM (see p. 11) communication has to be set up. You have to adapt two areas of the Windows XP operating system:

- the firewall (network shielding) settings
- the DCOM security settings

The first step has already been done during the installation phase. After installing the FP OPC Server, you will find three new firewall rules: "DCOM Port 135 TCP", "OPC Enumeration Service" and "FP OPC Server 2". These rules enable the firewall to accept incoming requests to the FP OPC Server.

DCOM enhancements

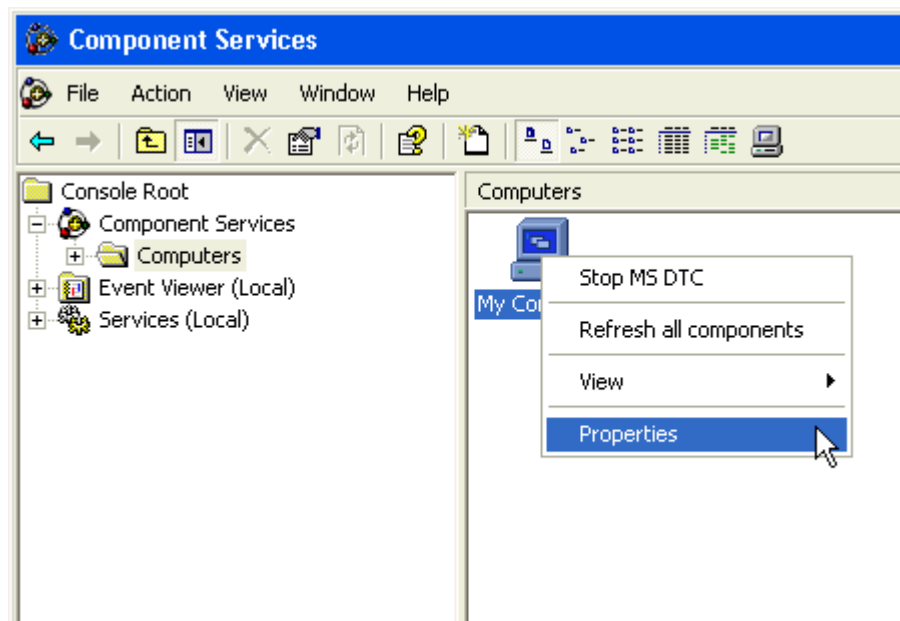
The DCOM settings specify the limits and security constraints, such as launch and access permissions for the FP OPC Server. Launch permissions hereby specify the users who are allowed to start an application. Access permissions grant specified users access to the application.

Procedure

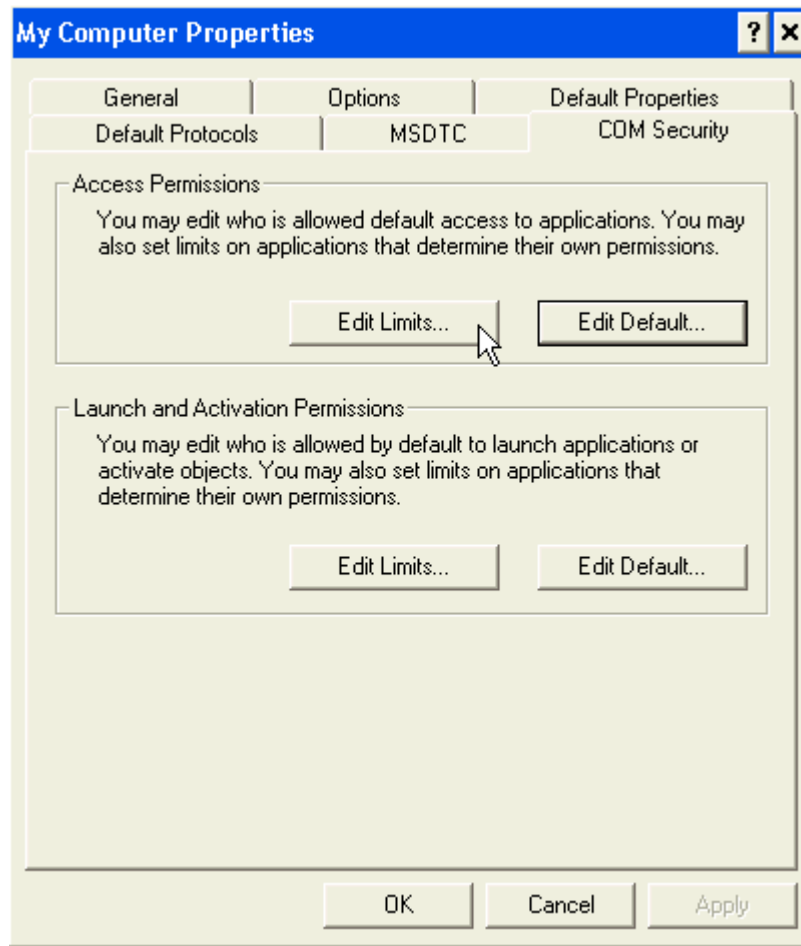
1. Select **Tools** → **DCOM configuration**

You get access to the DCOM (see p. 11) security settings.

2. Within the tree, expand "Component Services" and "Computers"
3. From the pop-up menu of "My Computer", select "Properties"



4. Select the "COM Security" tab

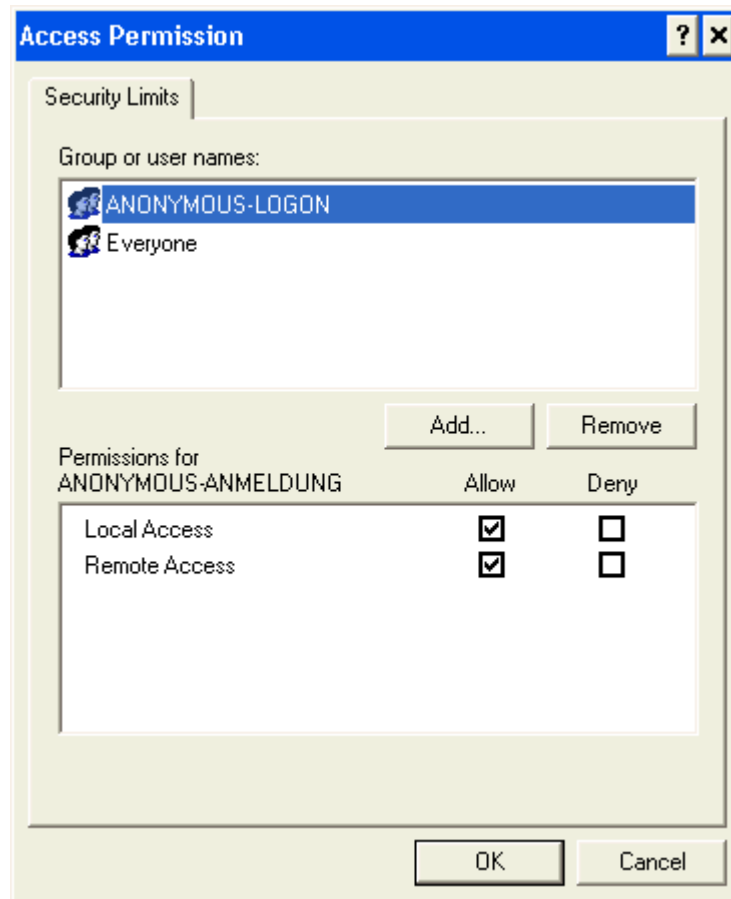
**Note**

Perform the following five steps to adapt the permission configurations.

Step 1: Edit access permission

1. Select [Edit Limits...] under "Access Permissions"

The user named "ANONYMOUS LOGON" is mandatory for the OPC Enumeration function.

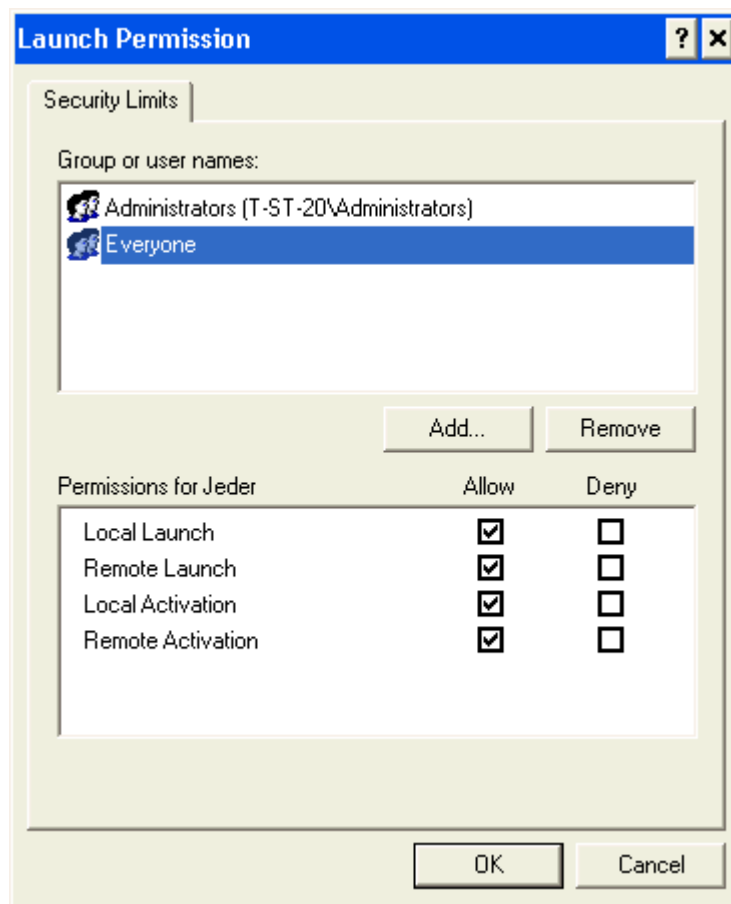


2. Activate both "Allow" check boxes, for "Local Access" and "Remote Access"
3. [OK]

Step 2: Edit launch permission

1. Under "Launch and Activation Permissions", select [Edit Limits...]

The user "Everyone" has to be adapted.



2. Activate all 4 "Allow" check boxes, for "Local Launch", "Remote Launch", "Local Activation" and "Remote Activation"
3. [OK]

Note

To reduce the access rights to a smaller group of users, select only the desired users from the list instead of the general user "Everyone".

Step 3: Add a new user who can remotely access the OPC Server

1. Under "Access Permissions", select [Edit Default...]
2. Add a new user who can remotely access the OPC Server

3. Activate both "Allow" check boxes, for "Local Access" and "Remote Access"

Local Access	<input checked="" type="checkbox"/>	<input type="checkbox"/>
Remote Access	<input checked="" type="checkbox"/>	<input type="checkbox"/>

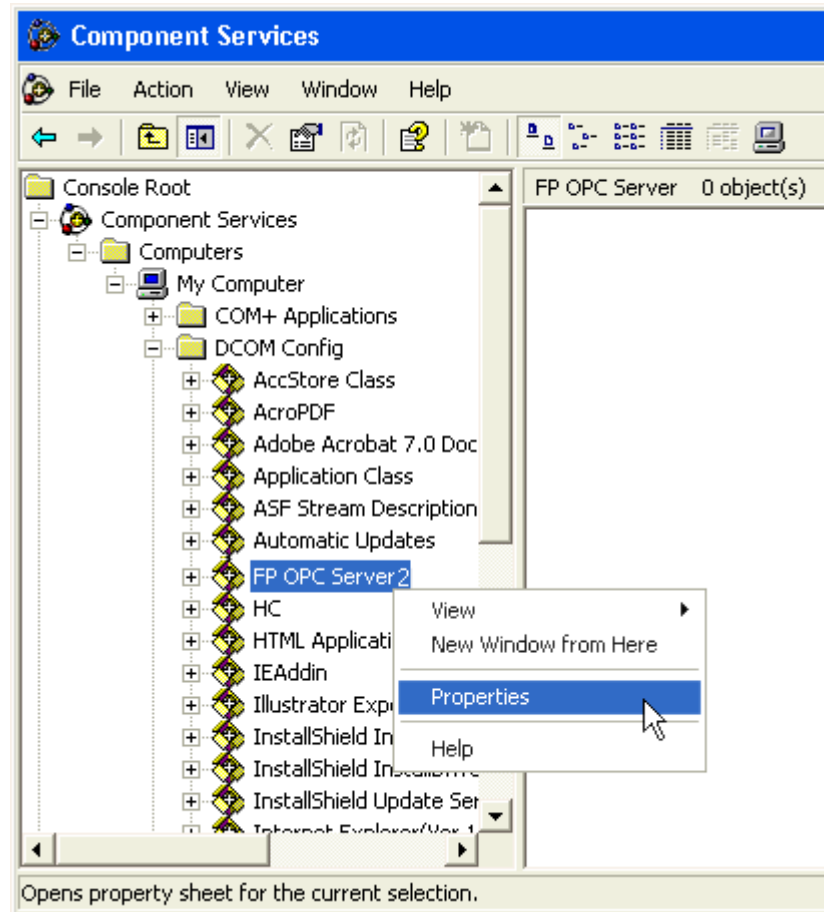
4. Under "Launch and Activation Permissions", select [Edit Default...]
5. For th new user entry, select all 4 launch types.

Local Launch	<input checked="" type="checkbox"/>	<input type="checkbox"/>
Remote Launch	<input checked="" type="checkbox"/>	<input type="checkbox"/>
Local Activation	<input checked="" type="checkbox"/>	<input type="checkbox"/>
Remote Activation	<input checked="" type="checkbox"/>	<input type="checkbox"/>

6. [OK] to close the "My Computer Properties" dialog

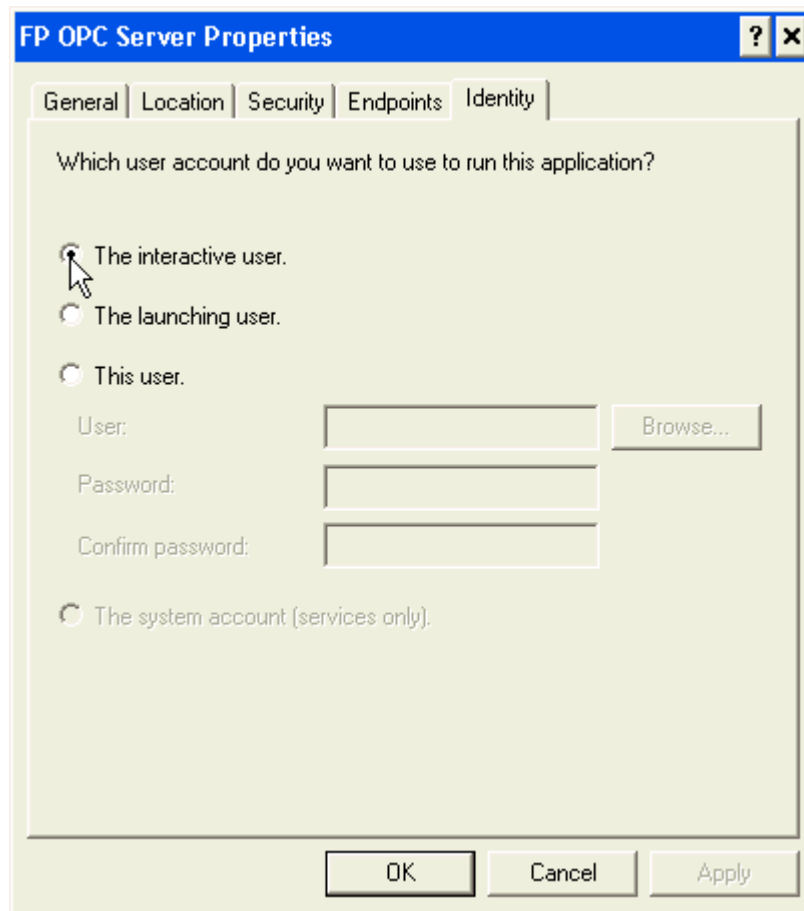
Step 4: Activate the interactive user

1. Under "My Computer", expand "DCOM Config"
2. Select "FP OPC Server 2"



FP OPC Server.docx

3. From the pop-up menu, open the FP OPC Server properties
4. Select the "Identity" tab and activate the "Interactive user" who shall run the OPC Server



5. [OK]

Step 5: Reboot your PC after changing the DCOM security settings

5.5 Abbreviations

BCD

Binary Coded Decimal

See also: BCD 16-bit (see p. 72)

COM

Component Object Model

CSV

Character Separated Values

DA

Data Access

DCOM

Distributed Component Object Model

DDE

Dynamic Data Exchange

GVL

Global Variable List (Control FPWIN Pro)

OLE

Object Linking and Embedding

OPC

OLE for Process Control

OutProc

An OutProc server realizes one of three characteristics of a standardized OPC server. If implemented as an OutProc server, the application is started by an OPC client from an autarkic executable file. The server application can reside on the local or a remote machine.

PLC

Programmable Logic Controller

XML

Extended Markup Language

Index

A

Abbreviations	83
Add a New Channel.....	23
Add a New Device	27
Add a New Tag	30
Add a New Tag Group	28
Appendix.....	69

B

Basic Software.....	16
BCD	83
BCD 16-bit	72
BCD 32-bit	72
Before beginning.....	1
Boolean - Boolean Data Type (1-bit)	70

C

Channels.....	23
COM.....	10, 84
Communication Driver Test and Protocol Adaptation	14
Communication Settings Dialog	55
Configure the Working Area	42
Connected Clients	49
Connectivity	13
CSV.....	84

D

DA.....	84
Data Types	70
Date	72
Date And Time	73
DCOM	11, 84
DCOM Configuration	76
DDE	84
Device Connectivity.....	13
Devices.....	26

E

Edit menu	44
Element Structure.....	26
Ethernet (Local) Communication Settings	60
Ethernet Communication Settings.....	58
Ethernet Network.....	75

F

Features of the FP OPC Server	13
Features of the OPC Server.....	13
File Menu.....	44
First Steps Using the FP OPC Server.....	19
Float 32-bit	71

G

Graphical User Interface (GUI)	42
GVL	84

H	
<hr/>	
Hardware and Software Requirements.....	17
Help Menu.....	45
Help Pane	51
I	
<hr/>	
Import/Export Tag Data	37
Import/Export Tag Information	54
Important symbols.....	2
Install the FP OPC Server	19
Interruption Tolerance.....	14
Introduction to Namespaces	64
Introduction to the Panasonic FP OPC Server	9
L	
<hr/>	
Load/Save The Project	54
M	
<hr/>	
Menu Names and Commands	43
MEWTOCOL OPC Server Compatibility	
Namespace	66
Modem Communication Settings.....	57
N	
<hr/>	
Namespaces	15, 64
Navigator Pane	46
New Channel Wizard	52
New Device Wizard.....	53
New Tag Group Wizard	53
New Tag Wizard	54

Number of Active Items	49
Number of Tags.....	49
O	
<hr/>	
OLE	84
Online Changes.....	17
OPC.....	84
OPC and Its Underlying Technology	9
OPC Connectivity	13
OPC Data Access (DA)	11
OPC Foundation.....	10
Open/Save Project	35
OutProc	84
Overview.....	9
P	
<hr/>	
Panasonic Addresses.....	69
Panasonic Data Types	70
Panasonic FP PLC Network Types	73
Panes	46
PLC.....	85
Project Information Input/Output	54
R	
<hr/>	
Record of Changes	90
S	
<hr/>	
Serial Communication Settings	55
Serial Network	74
Server Menu	45

Server Operation	32
Server Status Pane.....	49
Server Time	49
Signed 16-bit.....	70
Signed 32-bit.....	70
Special Internal Data Registers	69
Special Internal Relays	69
Start the FP OPC Server Application	20
Start the Server.....	33
Start/Stop the FP OPC Server Application	20
Static, Manually Defined Namespace.....	65
Stop the FP OPC Server Application.....	22
Stop the Server	34
String - String Data Type (Variable Length)	71
System Log Pane	48
System Status Namespace	66
System Tray.....	63

T

Tag Groups	28
Tag Pane	46
Tags	29
Time Of Day.....	73
Toolbars	51
Tools Menu	45
Transferring Project Information	35

U

Undefined - Undefined Data Type.....	70
Unsigned 16-bit	70
Unsigned 32-bit	71
Up Time.....	49
Update an Existing Channel.....	25
Update an Existing Tag	31
USB Communication Settings	63
User Interface	14

V

View Menu.....	44
----------------	----

W

Wizard	51
Word 16-bit.....	71
Word 32-bit.....	71

X

XML	85
-----------	----

Record of Changes

Manual No.	Date	Description of Changes
ACGM0143V1.0END	Dez. 2006	First edition
ACGM0143V1.1END	Jan. 2007	Updated documentation: notes on removing the software.
ACGM0143V1.2END	Apr. 2007	The description of Ethernet (Local) communication has been moved to the section Communication Settings (see p. 55).
ACGM0143V1.3END	Mai 2007	Microsoft Windows Vista compatible
ACGM0143V1.4EN	Sept. 2007	MEWNET W/W2 connection removed
ACGM0143V1.5EN	Mai. 2008	New options are available under Tools → Options → Event Log Settings : Enable debug message logging Enable memory status message logging
	Jan. 2010	Update for release of FP OPC Server 2. See the section "New in this version" in the online help.
	Sept. 2010	Update for release of FP OPC Server 2.01. See the section "New in this version" in the online help.
ACGM0143V2EN	Oct. 2011	Update for release of FP OPC Server 2.02. See the section "New in this version" in the online help.
ACGM0143V3EN	July 2013	Update for release of FP OPC Server 2.021. See the section "New in this version" in the online help.

Global Network

North America | **Europe** | **Asia Pacific** | **China** | **Japan**

Panasonic Electric Works Global Sales Companies



Europe		
▶ Headquarters	Panasonic Electric Works Europe AG	Rudolf-Diesel-Ring 2, 83607 Holzkirchen, Tel. +49 (0) 8024 648-0, Fax +49 (0) 8024 648-111, www.panasonic-electric-works.com
▶ Austria	Panasonic Electric Works Austria GmbH	Josef Madersperger Str. 2, 2362 Biedermannsdorf, Tel. +43 (0) 2236-26846, Fax +43 (0) 2236-46133, www.panasonic-electric-works.at
	Panasonic Industrial Devices Materials Europe GmbH	Ennsbahnstraße 30, 4470 Enns, Tel. +43 (0) 7223 883, Fax +43 (0) 7223 88333, www.panasonic-electronic-materials.com
▶ Benelux	Panasonic Electric Works Sales Western Europe B.V.	De Rijn 4, (Postbus 211), 5684 PJ Best, (5680 AE Best), Netherlands, Tel. +31 (0) 499 372727, Fax +31 (0) 499 372185, www.panasonic-electric-works.nl
▶ Czech Republic	Panasonic Electric Works Czech s.r.o.	Organizační složka, Administrative centre PLATINIUM, Veverí 111, 616 00 Brno, Tel. (+420)541 217 001, Fax (+420)541 217 101, www.panasonic-electric-works.cz
▶ France	Panasonic Electric Works Sales Western Europe B.V.	Succursale française, 10, rue des petits ruisseaux, 91371 Verrières le Buisson, Tél. +33 (0) 1 6013 5757, Fax +33 (0) 1 6013 5758, www.panasonic-electric-works.fr
▶ Germany	Panasonic Electric Works Europe AG	Rudolf-Diesel-Ring 2, 83607 Holzkirchen, Tel. +49 (0) 8024 648-0, Fax +49 (0) 8024 648-111 www.panasonic-electric-works.de
▶ Hungary	Panasonic Electric Works Europe AG	Magyarországi Közvetlen Kereskedelmi Képviselet, 1117 Budapest, Neumann János u. 1., Tel. +36(0)1482 9258, Fax +36 (0) 1482 9259, www.panasonic-electric-works.hu
▶ Ireland	Panasonic Electric Works UK Ltd.	Irish Branch Office, Dublin, Tel. +353 (0) 14600969, Fax +353 (0) 14601131, www.panasonic-electric-works.co.uk
▶ Italy	Panasonic Electric Works Italia s.r.l.	Via del Commercio 3-5 (Z.I. Ferlina), 37012 Bussolengo (VR), Tel. +39 (0) 456752711, Fax +39 (0) 456700444, www.panasonic-electric-works.it
▶ Nordic Countries	Panasonic Electric Works Nordic AB	Filial Nordic, Knarrarnäsgatan 15, 16440 Kista, Sweden, Tel. +46 859476680, Fax +46 859476690, www.panasonic-electric-works.se
	Panasonic Eco Solutions Nordic AB	Jungmansgatan 12, 21119 Malmö, Tel. +46 40697-7000, Fax +46 40697-7099, www.panasonic-fire-security.com
▶ Poland	Panasonic Electric Works Polska sp. z o.o.	ul. Woloska 9A, 02-583 Warszawa, Tel. +48 (0) 22 338-11-33, Fax +48 (0) 22 338-12-00, www.panasonic-electric-works.pl
▶ Portugal	Panasonic Electric Works España S.A.	Portuguese Branch Office, Avda Adelino Amaro da Costa 728 R/C J, 2750-277 Cascais, Tel. +351 214812520, Fax +351 214812529
▶ Spain	Panasonic Electric Works España S.A.	Barajas Park, San Severo 20, 28042 Madrid, Tel. +34 913293875, Fax +34 913292976, www.panasonic-electric-works.es
▶ Switzerland	Panasonic Electric Works Schweiz AG	Grundstrasse 8, 6343 Rotkreuz, Tel. +41 (0) 417997050, Fax +41 (0) 417997055, www.panasonic-electric-works.ch
▶ United Kingdom	Panasonic Electric Works UK Ltd.	Sunrise Parkway, Linford Wood, Milton Keynes, MK14 6LF, Tel. +44(0) 1908 231555, +44(0) 1908 231599, www.panasonic-electric-works.co.uk
North & South America		
▶ USA	Panasonic Industrial Devices Sales Company of America	629 Central Avenue, New Providence, N.J. 07974, Tel. +1-908-464-3550, Fax +1-908-464-8513, www.pewa.panasonic.com
Asia Pacific/China/Japan		
▶ China	Panasonic Electric Works (China) Co., Ltd.	Level 2, Tower W3, The Tower Oriental Plaza, No. 2, East Chang An Ave., Dong Cheng District, Beijing 100738, Tel. +86-10-5925-5988, Fax +86-10-5925-5973
▶ Hong Kong	Panasonic Industrial Devices Automation Controls Sales (Hong Kong) Co., Ltd.	RM1205-9, 12/F, Tower 2, The Gateway, 25 Canton Road, Tsimshatsui, Kowloon, Hong Kong, Tel. +852-2956-3118, Fax +852-2956-0398
▶ Japan	Panasonic Corporation	1048 Kadoma, Kadoma-shi, Osaka 571-8686, Japan, Tel. +81-6-6908-1050, Fax +81-6-6908-5781, www.panasonic.net
▶ Singapore	Panasonic Industrial Devices Automation Controls Sales Asia Pacific Pte. Ltd.	300 Beach Road, #16-01 The Concourse, Singapore 199555, Tel. +65-6390-3811, Fax +65-6390-3810