

AVerMedia®

AVerDiGi

SEB5108/5116 series

SEB5108 Lite/SEB5116 Lite/SEB5116⁺

Quick Installation Guide



**SPECIFICATIONS ARE SUBJECT TO CHANGE WITHOUT
PRIOR NOTICE
THE INFORMATION CONTAINED HEREIN IS TO BE
CONSIDERED FOR REFERENCE ONLY**



WARNING

**TO REDUCE RISK OF FIRE OR ELECTRIC SHOCK. DO NOT
EXPOSE THIS APPLIANCE TO RAIN OR MOISTURE
WARRANTY VOID FOR ANY UNAUTHORIZED PRODUCT
MODIFICATION**

Copyright © 2009

AVerMedia INFORMATION, Inc

All rights reserved

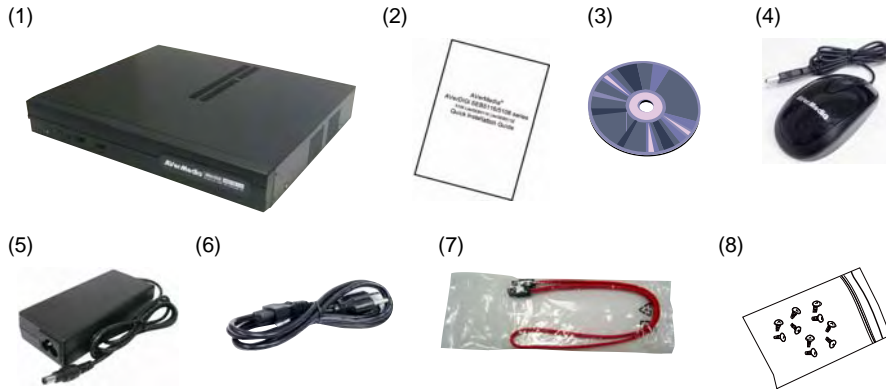
Reproduction without permission is prohibited

Content Table

Package Contents	1
SEB5108 Lite	1
SEB5116 Lite	1
SEB5116+	2
Optional Accessories.....	2
Hardware Installation	3
SEB5108 Lite	6
SEB5116 Lite	7
SEB5116+	8
Fist Time to Use DVR System	9
Using the Virtual Keyboard	12
Familiarizing the Buttons in Preview Mode	13
To Playback the Recorded File	14
Familiarizing the Buttons in Playback Mode	15
Playback Backup Video	16
Using the Remote Programs	19
Familiarizing the WebViewer Buttons	21

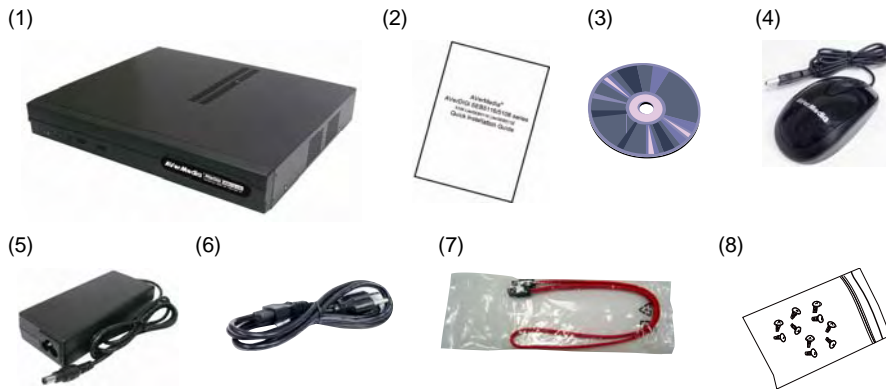
Package Contents

SEB5108 Lite



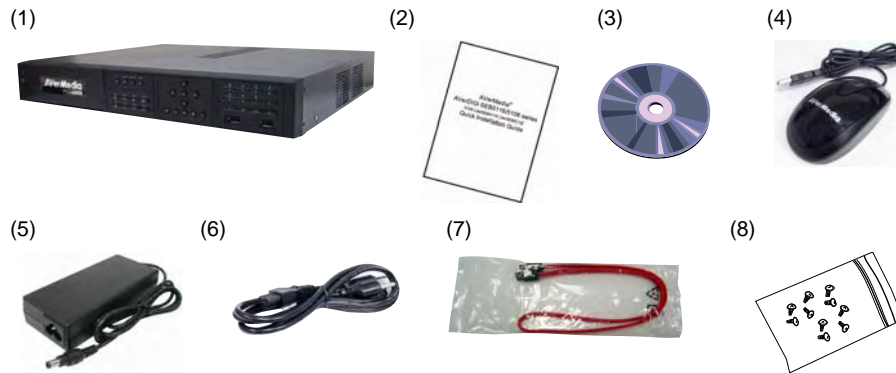
- (1) SEB5108 Lite unit
- (2) Quick Installation Guide
- (3) Software CD (User Manual included)
- (4) AVerMedia USB optical mouse
- (5) Power adaptor
- (6) Power Cord (The power cord varies depending on the standard power outlet of the country where it is sold)
- (7) SATA cable x 2
- (8) Screws for HDD installation

SEB5116 Lite



- (1) SEB5116 Lite unit
- (2) Quick Installation Guide
- (3) Software CD (User Manual included)
- (4) AVerMedia USB optical mouse
- (5) Power adaptor
- (6) Power Cord (The power cord varies depending on the standard power outlet of the country where it is sold)
- (7) SATA cable x 2
- (8) Screws for HDD installation

SEB5116+



- (1) SEB5116+ unit
- (2) Quick Installation Guide
- (3) Software CD (User Manual included)
- (4) AVerMedia USB optical mouse
- (5) Power adaptor
- (6) Power Cord (The power cord varies depending on the standard power outlet of the country where it is sold)
- (7) SATA cable x 2
- (8) Screws for HDD installation



If there is any damage, shortage or inappropriate item in the package contents, please contact with local dealer

Optional Accessories



Remote control



DVI cable for SEB5116 series
(16CH Loop out)



Audio cable for SEB5116 series
Red cable: 16CH audio in
White cable: 1CH audio out
Black cable: 1CH MIC in



Audio cable for SEB5108 series
(Red cable: 8CH audio in
White cable: 1CH audio out
Black cable: 1CH MIC in)



IR extension cable



Rack ears

Hardware Installation

A. Install the hard disk

Follow the steps to install the hard disk:



For hard disk spec, please referring to <http://www.avermedia.com/AVerDiGi/Product/> → **AVerDiGi EB Series** → AVerDiGi SEB5116+ or SEB5116 Lite or AVerDiGi 5108 Lite → Hardware Recommendations



The “compatible hard disks” indicated in the above recommendation list only means that these commercially available hard disks were tested with AVerMedia® products and functioned well under normal operation conditions. AVerMedia® does not guarantee or provide warranties, explicitly, implied or statutory with respect to the reliability of the hard disk function or its compatibility. In no event AVerMedia® shall be liable for damages, with respect to any business interruption of clients, lost profits, loss of programs or other data on your information handling system or otherwise. This includes direct, indirect, incidental, special, or consequential damages, resulting from the incompatibility caused by the usage of these hard disks, even if AVerMedia® has expressly advised about the risk of such damages. The entire risk arising out of the use of any information attached here with is borne by the recipient.

Follow the illustrated instructions below to install the hard disk:

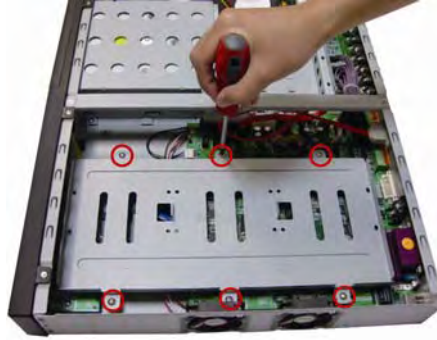
1. Loosen all screws (2 sides and back)
2. Push the cover backward and lift to open the case cover.



3. Loosen the screws of holder to make hard disk install more easily.



4. Loosen all the screws of hard disk plate.



5. The hard disk plate can be installed up to 3 hard disks. User can choose the position and place the hard disk on it.



6. Turn the plate and hard disk over carefully and secure the hard disk on the plate. If hard disk cannot be fit to the screw hole, then, you may adjust the hard disk position to fit the screw hole.



The power adaptor now only guarantees to support 2 HDD. If you require installing more than 2 HDD, please contact your local vendor to avoid unexpected damage of DVR system.

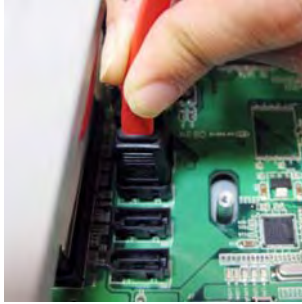
7. Screw tight the plate within hard disk inside the DVR unit



8. Plug the power cable into hard disk



9. Plug the SATA cable into SATA connector on the PC board



10. Plug another side of SATA cable into hard disk



11. Screw the holder



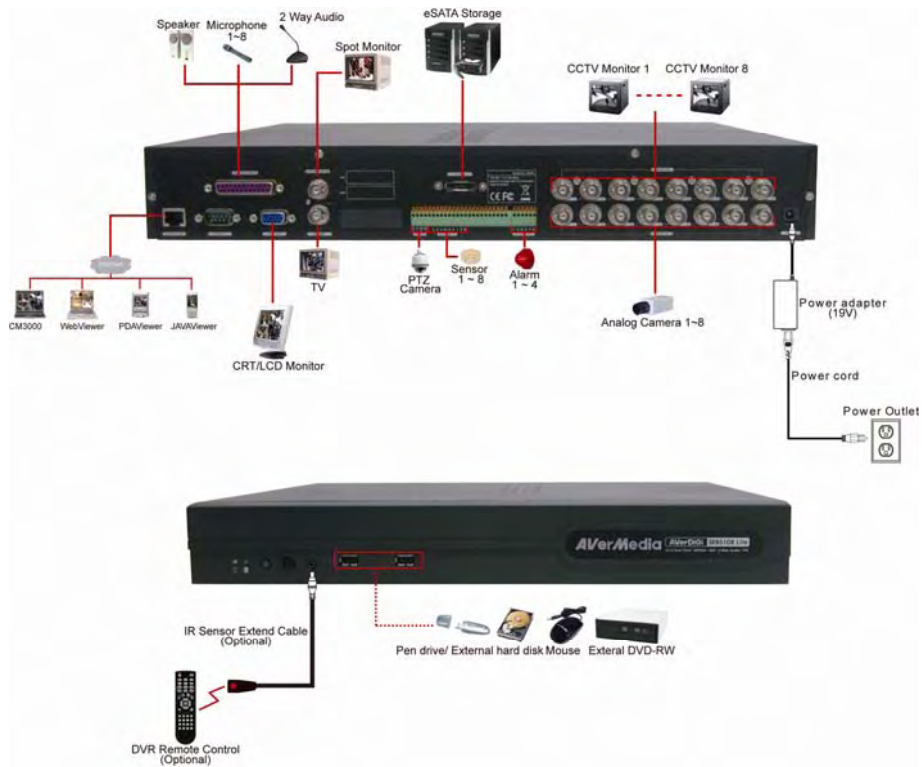
12. Push the cover forward and secure the cover



13. You may now connect all the cables and power on the DVR unit.

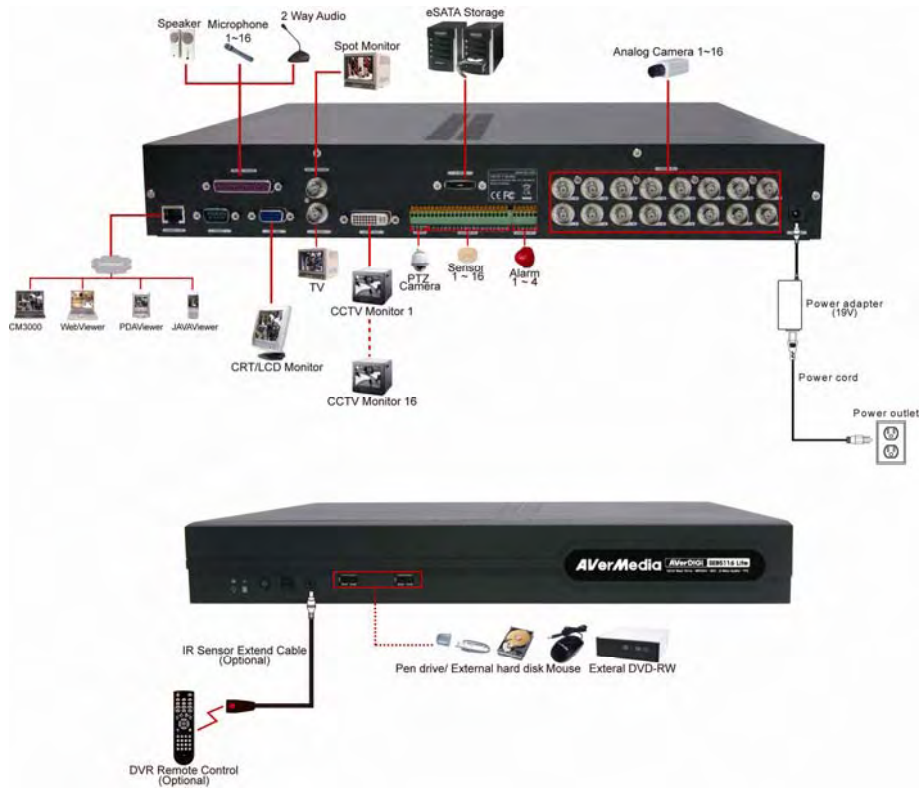
B. Device Connection

SEB5108 Lite



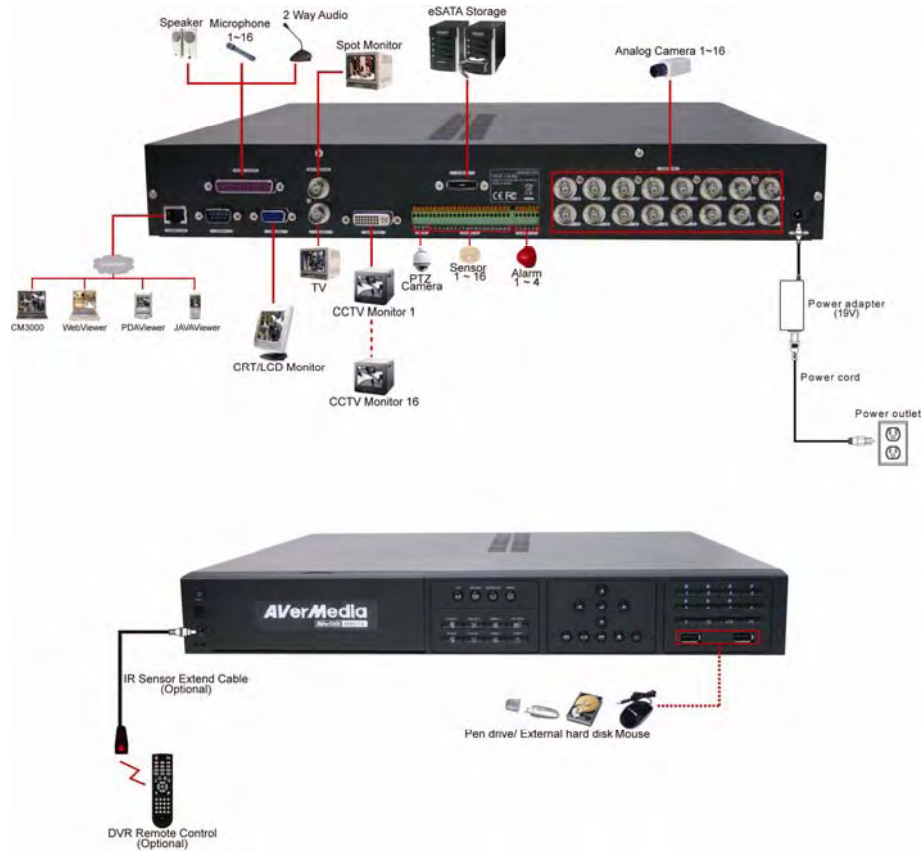
- All connected devices have their own power supply are necessary.
- Pen drive and external hard disk must be FAT32 format.

SEB5116 Lite




- All connected devices have their own power supply are necessary.
- Pen drive and external hard disk must be FAT32 format.

SEB5116+



- All connected devices have their own power supply are necessary.
- Pen drive and external hard disk must be FAT32 format.

Fist Time to Use DVR System

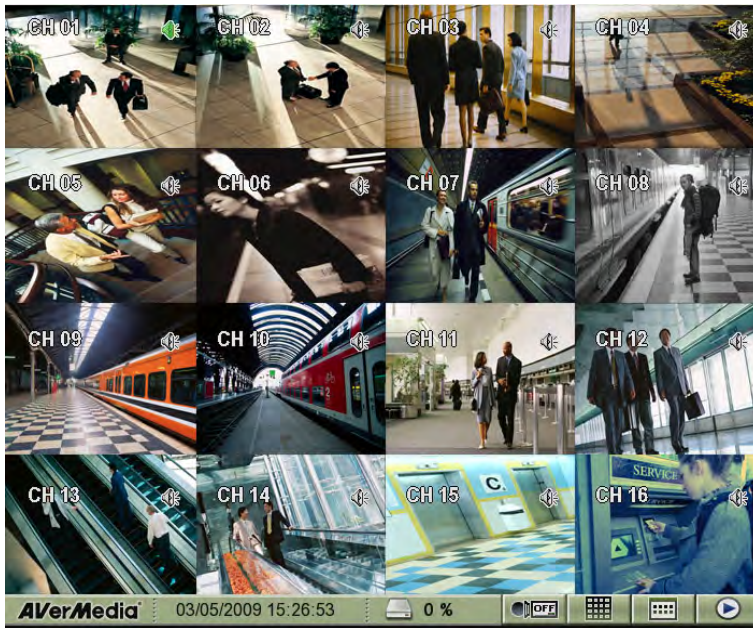
1. Connect the cameras
2. Connect the mouse to DVR unit(through USB port on front panel)
3. Power on the DVR unit.
4. The preset screen (color bar) will show up and wait for preview screen to display (about 60 seconds).
5. When preview screen show up, please wait for the authorization dialog pop-up. For security purpose, enter the User ID (default is **Admin**) and Password (default is 111111) to login the DVR system. Click  or right-click on the column to call out virtual keyboard to enter the ID and password.

Authorization


User ID

Password



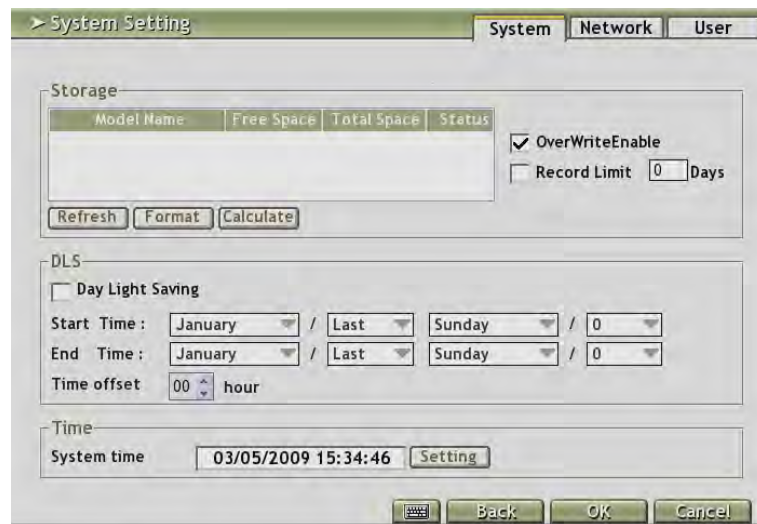



Preview Mode (SEB5116 series)

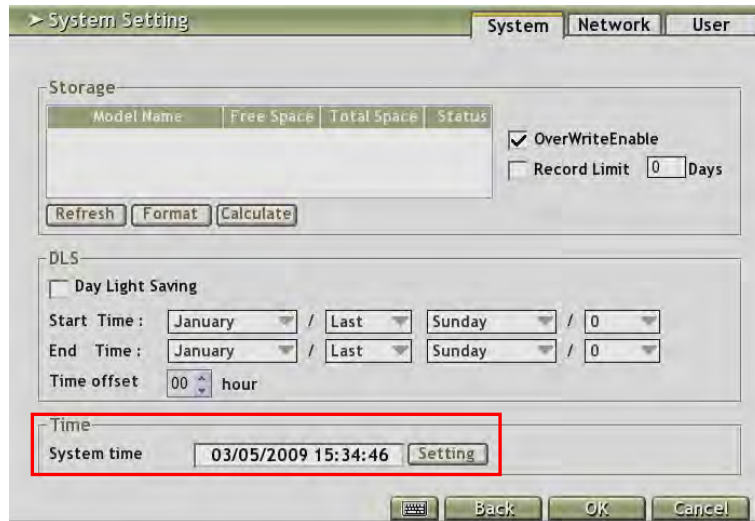
6. The hard disk must be formatted before user can use it with DVR unit. Following the below steps to format the hard disk.
 - a. Click  to call out **SETTING MENU**.




- b. Click **System** → **System** and click **Next**.
- c. Click **Refresh** button to detect the installed hard disk.
- d. Select the hard disk that user wants to format it.
- e. And then, click **Format** to start formatting.



7. Setup the date and time in order to have correct system time and date. Following the below steps to setup date and time:
 - a. Click  and select **System** → **System** tab and click **Next**.
 - b. In **Time** section, click **Setting** button of **System Time**.
 - c. Select the date and adjust the time, and then, click **OK**.

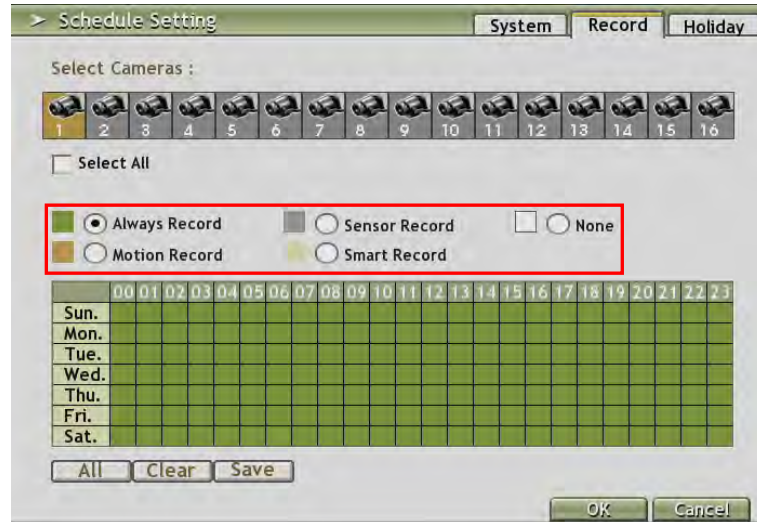


8. Setup the **Schedule** to record.
 - a. Click  → **Setting** → **Schedule** → **System**
 - b. Select the date and type of record (Weekly, Month, or None).
 - c. And then, select the week day (Sun. ~ Sat.) and hours (00 ~ 23) by click the week day and hours table.
 - d. Click **Save**.



- e. Click **Record** tab.
 - f. Select the record mode (Always, Motion, Sensor, or Smart) and date.

- g. And then, select the week day (Sun. ~ Sat.) and hours (00 ~ 23) by click the week day and hours table.
- a. Click **Save** and **OK** to complete the record schedule setting.



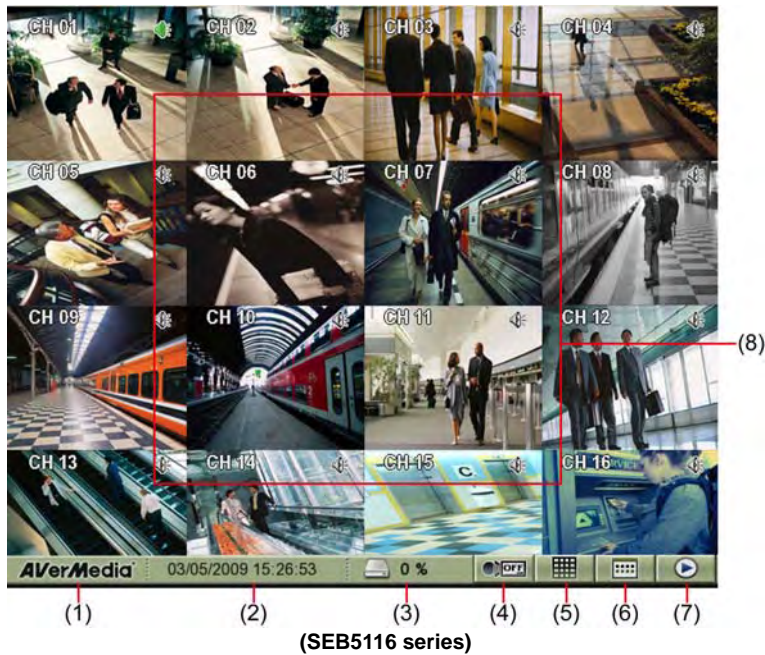
9. To start recording, click (record) button.


Using the Virtual Keyboard

Use the Virtual Keyboard and mouse to configure the DVR system. Just click or select the column and right-click to call out the virtual keyboard. For uppercase, click Caps button. To exit, click left-click anywhere on screen.




Familiarizing the Buttons in Preview Mode



Name	Function
(1) Login	Click to select reboot the DVR system or re-login in different account.
(2) Status	Display recording date and time
(3) Hard disk capacity	Display the hard disk usage of capacity
(4) Record	Start/stop video recording.
<p>i To start recording, user need to setup record schedule. Click  > Schedule > Record tab. And then, select the record mode (Always, Motion, Sensor, or Smart) and date.</p>	
(5) Split screen mode	Select from 6 different split screen types to view all the camera, or one camera over the other or alongside on a single screen. It also allows you to switch and view different camera number.
<p>i</p> <ul style="list-style-type: none"> - Double click on channel can switch to full screen mode of the channel. - When you are in single screen mode, Right click on the area you want to enlarge view. Double right-click will back to normal screen view. 	
(6) Setup menu	To call out system setup menu
(7) Playback	Switch to Playback mode. This allows you to view the recorded video file.
(8) Channel preview	To display live video of all channels

To Playback the Recorded File

To switch in Playback mode, click  (Playback) button at the bottom right corner of Preview mode user interface. And then, select the date, hour, and minute that user wants to playback from **Calendar Search**. Click **OK** to start playback.



The image shows a 'Calendar Search' dialog box. At the top, it displays the month '2009/03' with navigation arrows. Below this is a calendar grid with days of the week (Sun. to Sat.) as columns and dates (1 to 31) as rows. The date '5' is highlighted. To the right of the calendar is a dropdown menu set to 'Normal'. Below the calendar are two sections: 'Select Hour:' with a row of buttons from 00 to 22, and 'Select Minute:' with a row of buttons from 00 to 50. At the bottom right are 'OK' and 'Cancel' buttons.

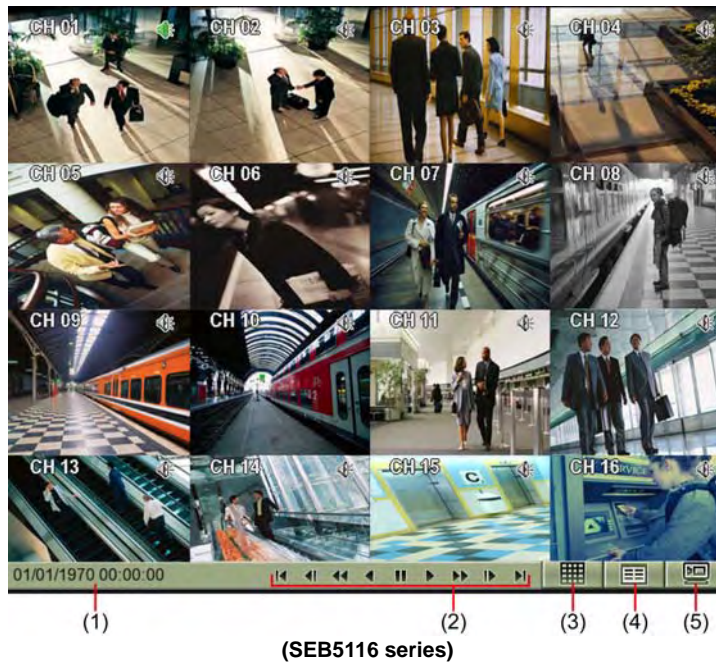
Sun.	Mon.	Tue.	Wed.	Thu.	Fri.	Sat.
22	23	24	25	26	27	28
1	2	3	4	5	6	7
8	9	10	11	12	13	14
15	16	17	18	19	20	21
22	23	24	25	26	27	28
29	30	31	1	2	3	4

Select Hour:
00 02 04 06 08 10 12 14 16 18 20 22

Select Minute:
00 10 20 30 40 50

OK Cancel

Familiarizing the Buttons in Playback Mode



Name	Function
(1) Status	Display the recorded date, time and playback speed.
(2) Playback Control Buttons	<ul style="list-style-type: none"> ⏪ : Move at the beginning of the recorded video file. ⏮ : Go back to the previous frame. ⏴ : Play the recorded video file at the speed of 1/2X, 1/4X, 1/8X, or 1/16X. ⏪ : Wind back the recorded video file. ⏸ : Briefly stop playing the recorded video file. ▶ : Play the recorded video file. ⏩ : Play the recorded video file at the speed of 2x, 4x, 8x, or 16x. ⏭ : Go to the next frame. ▶ : Go to the end of the recorded video file.
(3) Split Screen Mode	Select from 6 different split screen type to playback the recorded video file of all the camera, or one camera over the other or alongside on a single screen.
(4) Playback menu	To call out playback menu
(5) Preview	Switch to Preview mode.

Playback Backup Video

You can playback the backup files and output video segment by using QPlayer applications on the PC. When you back up the recorded file, QPlayer applications are automatically included in the backup folder. With QPlayer, it is the same as in Playback mode and supports 6 different split screen types to view all the video at the same time. The only difference is that there are no Preview and Playback buttons.

To run the application, go to backup folder and double-click **install_player** to install QPlayer. After installation, double-click **QPlayer** icon on the PC desktop.



i The QPlayer only support the *.dvr format.


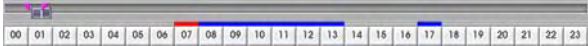



Name	Function
(1) Split Screen Mode	Select from 6 different split screen type to playback the recorded video file of all the camera, or one camera over the other or alongside on a single screen.

- i**
- If there are only 4 cameras, you won't be able to switch to 8,9,13, and 16 split screen mode.
 - To zoom in an area on the screen, **Right** click and **Drag** a square on the area you want to enlarge.

(2) Progress bar	Show the progress of the file being played. You may move the bar to seek at any location of the track.
------------------	--

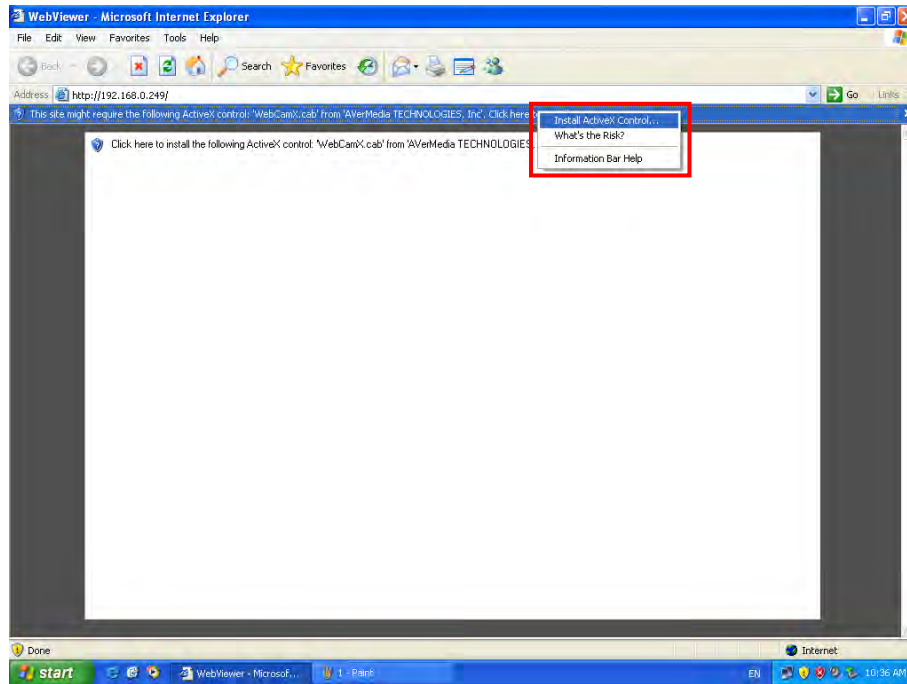
Name	Function
(3) Hour Buttons	Select and click to playback the recorded video file on the specific time frame.
	The Hour buttons represent the time in 24-hour clock. The blue bar on top of the hour button indicates that there is a recorded video file on that period of time. While the red bar indicates that you are currently viewing the recorded video file.
(4) Playback Control Buttons	From left to right order: Begin: Move at the beginning of the recorded video file. Previous: Go back to the previous frame. Slower: Play the recorded video file at the speed of 1/2X, 1/4X, 1/8X, 1/16X or 1/32X. Rewind: Wind back the recorded video file. Pause: Briefly stop playing the recorded video file. Play: Play the recorded video file. Faster: Play the recorded video file at the speed of 2x, 4x, 8x, 16x, or 32x. Next: Go to the next frame. End: Go to the end of the recorded video file.
(5) Open Date	Select the date on the calendar and the time from 00 to 23 to where to start playing the recorded video file.
	The numbers from 00 to 23 represent the time in 24-hour clock. The numbers from 01 to 16 represent the camera ID. The blue colored column indicates that there is a recorded video file on that period of time. While the red colored column indicates on where to start playing the recorded video file.
(6) Open File	Access the backup video file from hard disk or external storage device.
(7) Status bar	Display the recorded date, time and play speed.
(8) Camera ID	Show the number of cameras that are being viewed. When you are in single screen mode, click the camera ID number to switch and view other camera.
(9) Language	Switch to different UI tool tip language
(10) Export	Export includes Snapshot, Print, and Output function. <ul style="list-style-type: none"> ■ Snapshot: Capture and save the screen shot either in *.jpg format. ■ Print: Print the screen shot. ■ Output Video Clip: Save the segmented file in *.mpg, *.avi, *.dvr format.

Name	Function
(11) Segment	<p>Keep a portion of the recorded video.</p> <p>Following the below steps to Cut and Save the Wanted Portion of the Recorded Video</p> <ol style="list-style-type: none"> 1. Use the Playback Control buttons or drag the bar on the playback progress bar and pause on where you want to start the cut. Then, click Segment to set the begin mark.  <ol style="list-style-type: none"> 2. Use the Playback Control buttons or drag the bar on the playback progress bar and pause on where you want to end the cut. Then, click Segment to set the end mark. To cancel segmentation or set the segment marks from the start, click Segment button again.  <ol style="list-style-type: none"> 3. Click Export button → Output Video Clip to save the wanted clip. 4. In the Save As dialog box, locate on where you want to save the file, type the filename, and select the video format.
(12) Full screen	<p>View in full screen mode. To return, press the right button of the mouse or ESC on the keyboard or click the arrow icon.</p>  <p>When you switch to full screen in multiple-screen mode, Left click to toggle to only display one of the video in the multiple-screen mode or all.</p>
(13) Find Next	<p>Search for the next event or changes in the motion detector frame. You can use this when you are using Intelligent Search or Event Search function.</p>
(14) Event Search	<p>Search from the recorded activities that were recorded in event log (i.e., Sensor, Motion, Video Loss).</p>
(15) Intelligent Search	<p>Search the changes in the motion detector frame.</p>
(16) De-interlace	<p>To enhance the video quality. Set the de-interlace mode to #1, if you are capturing motionless picture and #2, if it captures lots of movement.</p>

Using the Remote Programs

User can use Microsoft Internet Explorer to access DVR system by entering the IP address. To use this feature, make sure that your PC and DVR server both are connected to the internet and the Network feature is enabled.


Accessing this feature for the first time you will be prompted by your browser to install WebCamX.cab, allow the installation and you should be able to connect and login afterwards. Click to **install ActiveX** if your PC required to be installed.

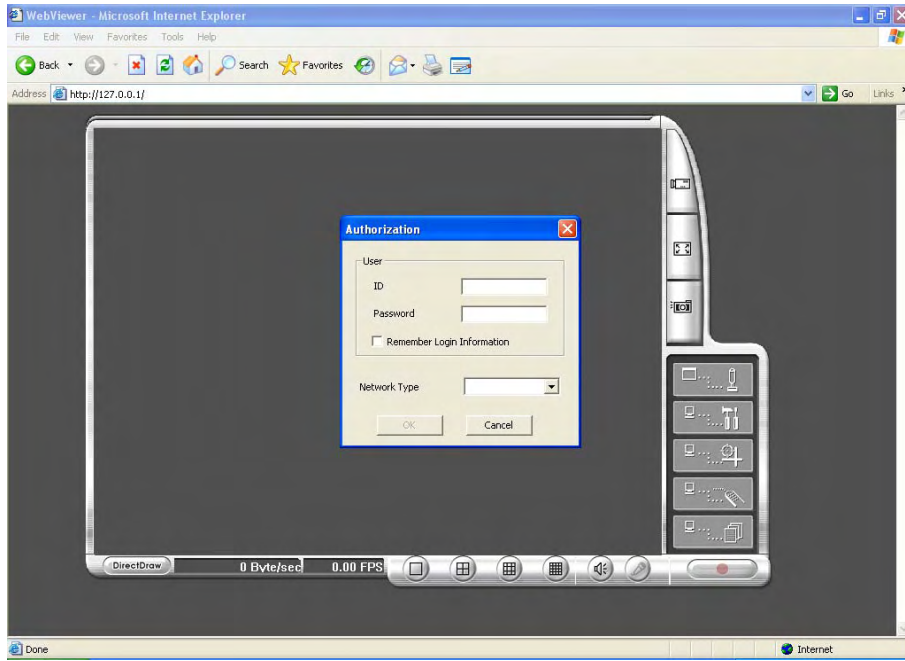


And then, Click **Install** when the Internet Explorer - Security Warning dialog box appears.



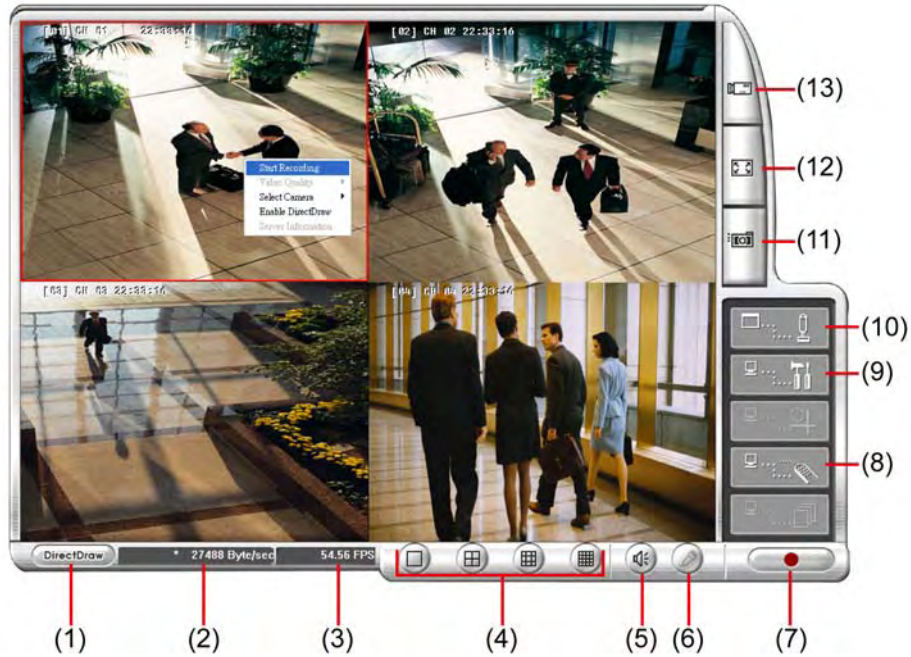
After installing the WebCamX.cab and when connecting to the DVR system, you are required to enter default account ID (Admin; capital in first letter) and password (111111) and select the type of network.

 Changing account password is strongly recommended.



Familiarizing the WebViewer Buttons

Right-clicking on the WebViewer video screen, enables you to start video recording, change video quality, switch camera and enable/disable DirectDraw.



Name	Function
(1) DirectDraw	Enhance the video quality.
<p>i Not all graphic cards can support this function. If you can not see the screen display correctly or screen is messed, please check with VGA card vendor.</p>	
(2) Received file size	Indicate the size of the data being sent per second.
(3) Camera frames	Indicate the number of frames per second.
(4) One screen view	To view single camera view on screen. User can right click on the screen to switch to different camera view.
(5) Split screen view	To view all cameras on screen simultaneously.
(6) Audio	Enable/disable remote sound.
(7) Record	Start to record the video of the selected camera in AVI format. Directly click screen to select the channel that user wants to record and press Record button.
(8) Remote Console	Initiate Remote Console. It allows you to control DVR server

Name	Function
------	----------

(9) Remote setup Change the DVR server settings

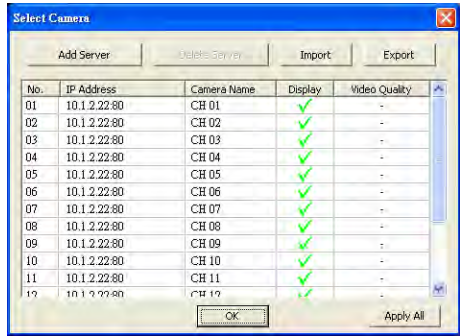


(10) PTZ Control Initiate PTZ camera controller

(11) Snapshot Capture and save the screen shot in *.bmp format.

(12) Full screen Use the entire area of the screen to only display the video.
To return, Right-click or press ESC on the keyboard.

(13) Select cameras to view
 Select to the view camera from different server. In Select Camera dialog box, Display column, click to enable/disable viewing the camera.
 Click **Add Server** and select the server type between DVR and IP Cam to add.
 Click **Delete Server** to delete the selected item.
 Click **Import** to load the previous saved list.
 Click **Export** to save the list.
 Click **Apply All** to change all the camera video quality based on the selected setting.
 Click **OK** to exit.



i SEB5108 series only has 8 channels will be available.



P/N: 300AC2A9-C55
March. 2009