



ANNEXXUS Finder User Guide

IMPORTANT: A unique IP address must be assigned to each Annexxus unit before installation.
The technician also must synchronize Annexxus clock for each unit.

Annexus Finder 3.X.X User Guide

Copyright © 2008-2012 i³ International Inc.

All rights reserved. No part of this manual may be reproduced or transmitted in any form or by any means, electronic or mechanical, including photocopying, recording, or by any information storage or retrieval system, without the prior written permission of the copyright owner and the publisher. Annexus is a registered trademark of i³ International. i³ reserves the right to change the contents of this manual without notice.

Disclaimer

Annexus Finder User Guide is provided *as is*, without warranty of any kind, expressed or implied, including but not limited to performance, merchantability, or fitness for any particular purpose. Neither i³ International Inc. nor its dealers or distributors shall be liable to any person or entity with respect to any liability, loss, or damage, caused or alleged to have been caused directly or indirectly by this information. Furthermore i³ International Inc. reserves the right to revise this publication, and to make changes to the content at any time, without notice.

FCC

This device complies with part 15 of the FCC Rules. Operation is subject to the following two conditions: **(1)** This device may not cause harmful interference, and **(2)** this device must accept any interference received, including interference that may cause undesired operation.

Address:

i³ International Inc. • 780 Birchmount Road, Unit 16 • Scarborough • Ontario • Canada M1K 5H4

Tech Support: 1.877.877.7241/support@i3international.com

Web Site: www.i3international.com

Table of Contents

- 1. Installing Annexus Finder 1
- 2. Locating Annexus Devices 5
- 3. IP Address/Subnet Mask Setup 7
- 4. Resetting Password to Factory Default 9
- Index 10

1

Installing Annexus Finder

Topics Covered

Annexus Finder locates all Annexus-series devices on the network and displays important information about each individual Annexus device, including IP Address, Subnet Mask, Port number, Firmware version, and MAC Address.

Annexus Finder application allows configuring the IP Address and the Subnet Mask for the detected Annexus-series devices as well as resetting the device's password to the factory default: "1234".

The Annexus Finder is compatible with the following lines of Annexus devices:

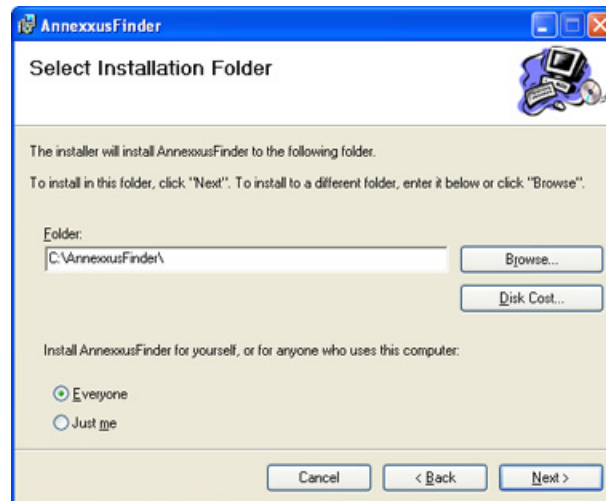
- Annexus 3XX series
- Annexus 401 series
- Annexus 32 series
- Annexus 41 series
- Annexus 51 series
- Annexus 52 series
- Annexus 53 series
- Annexus 49D
- Annexus 50D
- UI08

Each Annexus-series device is accompanied by the Resource CD. Locate the CD that was shipped with your Annexus device and insert it into your system's optical drive.

On the CD, locate and open the Annexus_Finder folder.

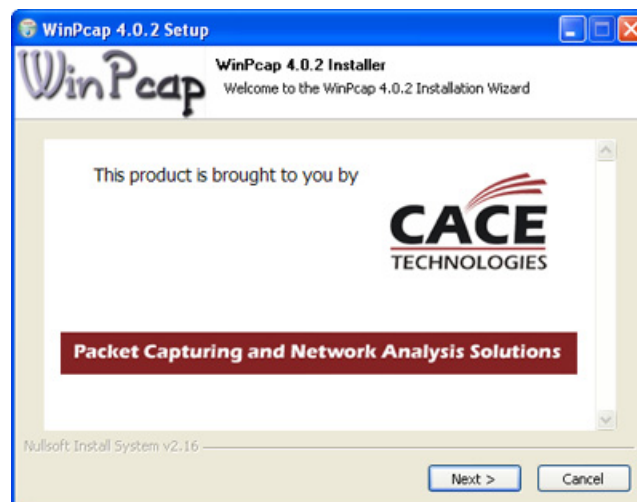
To install AnnexusFinder application, follow the steps below:

1. Double-click the **Setup.exe** file
2. In the first setup window, click **Next**
3. In the *Select Installation Folder* setup window, select installation drive and folder by clicking **Browse...** or keep the default installation folder (recommended). Select **Everyone** radio button and click **Next**.

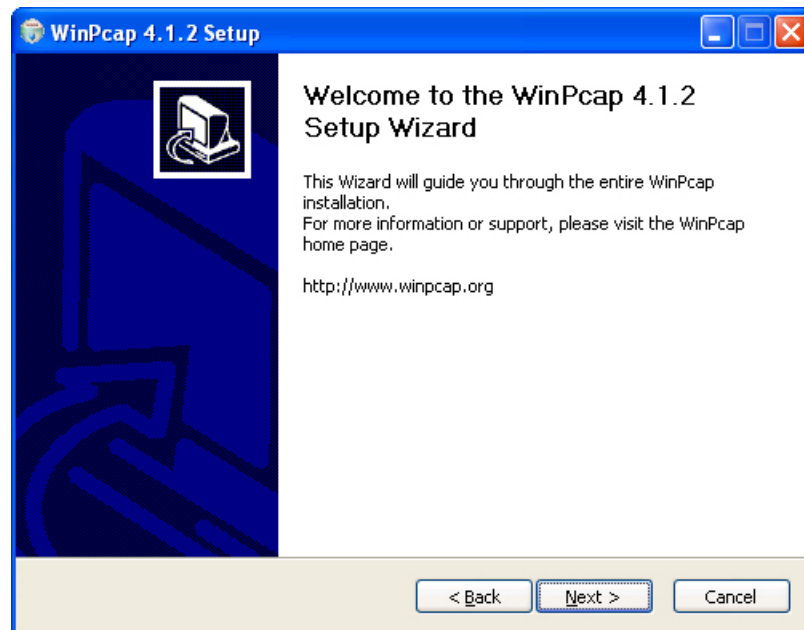


4. In *Confirm Installation* setup window, click **Next** to proceed with the installation
5. Wait while the Annexus Finder software is installing onto the local system
6. WinPcap installation will be automatically launched. You must install WinPcap library for the proper functioning of the Annexus Finder application.

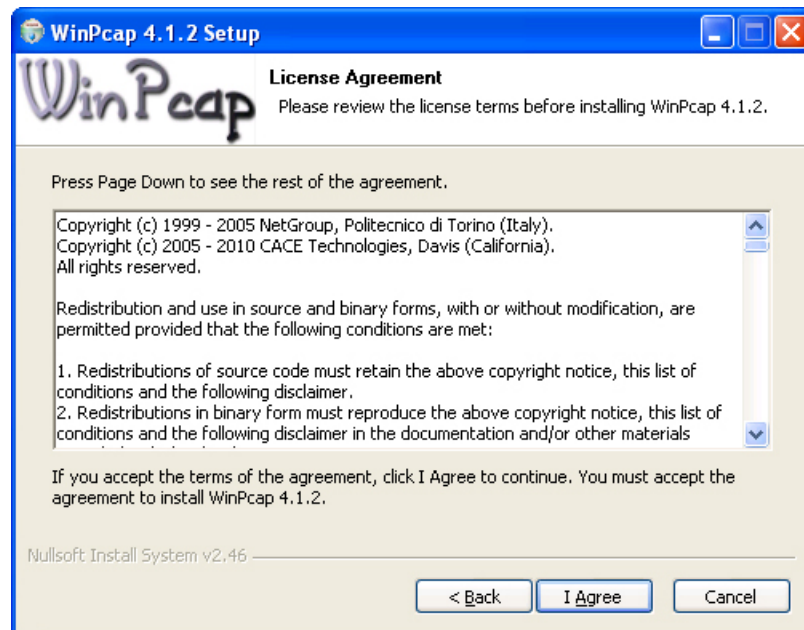
In the *WinPcap 4.0.2 Installer* window, click **Next**



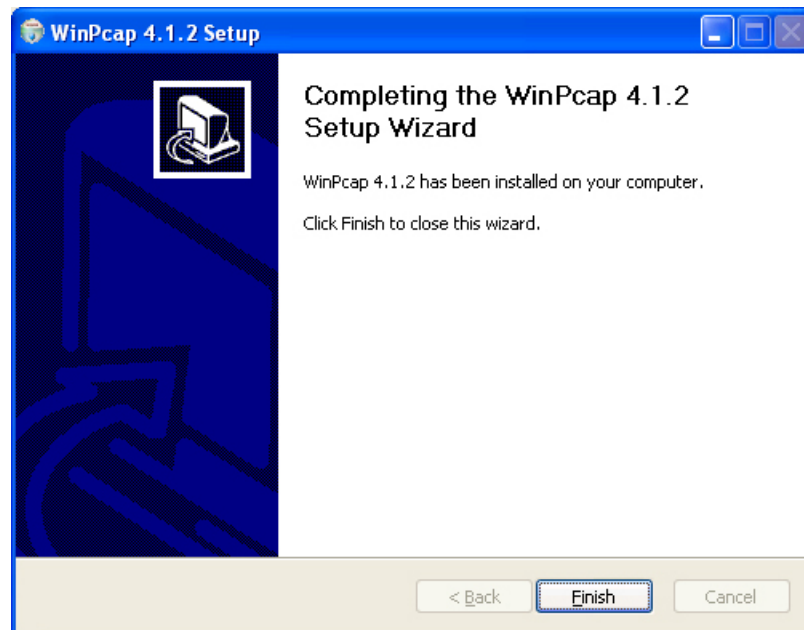
7. In the following WinPcap installer window, click **Next**



8. In the WinPcap *License Agreement* window, read the WinPcap license terms (scroll to read the entire document). Then click **I Agree** button.



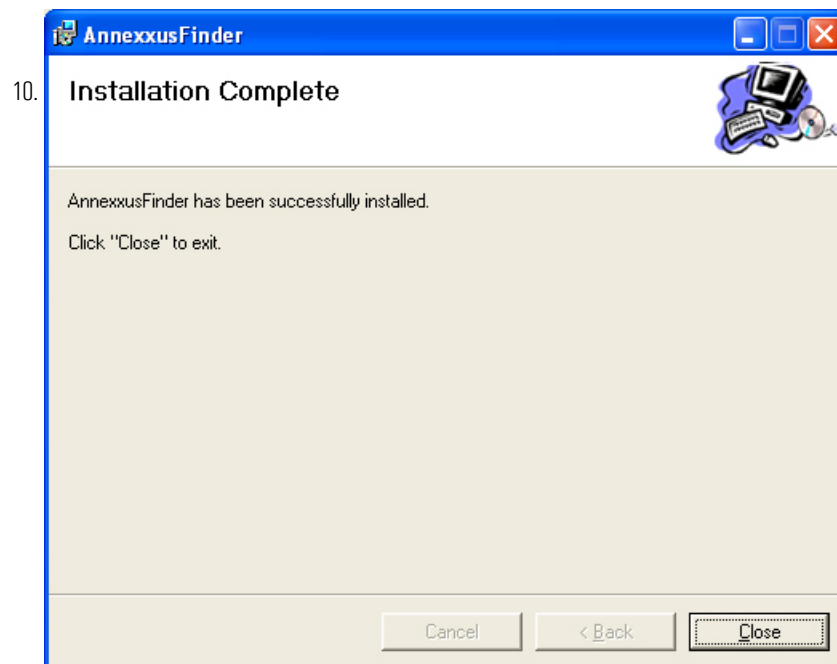
9. Wait while the WinPcap is installing onto the local system. Click **Finish** in the final WinPcap installation screen.



! Important

To the virus protection software users: make sure to allow WinPcap library to operate on your system.

Wait for the *Installation Complete* setup window to be displayed and click **Close**.



Annexus Finder is now installed on your system and is ready to use.

2

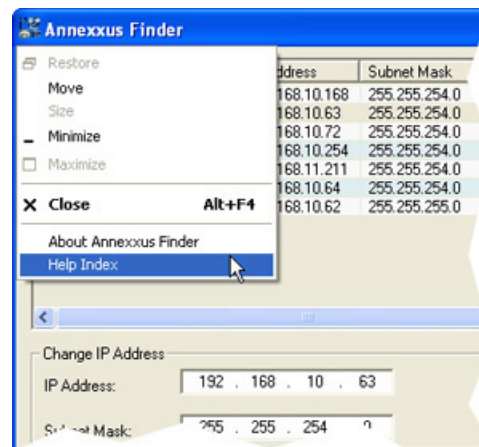
Locating Annexus Devices

Topics Covered



To launch Annexus Finder application, double-click the **AnnexusFinder** icon on the Desktop.

To display Annexus-series User Guide, click on the Annexus Finder icon in the top left corner of the Annexus Finder window and select **Help Index** from the drop-down menu.



Annexus Finder window will be displayed. All Annexus-series devices on the network will be automatically detected and displayed in the Annexus Finder list. In the example below, Annexus Finder was able to locate four (4) Annexus 301 IP cameras and three (3) Annexus 301-2M MegaPixel cameras (301C2M or 301D2M) on the local network.

By selecting a specific device in the list with the mouse cursor, detailed information for each device will be displayed underneath: IP Address, Subnet Mask, Port, MAC Address, Firmware version, Serial Number.

The **Annexus Finder** application window displays a table of discovered devices. The table has columns for Type, IP Address, Subnet Mask, Port, Firmware Version, MAC Address, and Serial Number. Below the table is a scroll bar. Underneath the scroll bar is a section for editing device information, including fields for IP Address, Subnet Mask, Port, MAC Address, Firmware Version, and Serial Number. At the bottom of this section are buttons for Edit, Save, Cancel, and Close. Below the edit section is a section for resetting the password, which includes a text box for the Authorization Code and a Submit button.

	Type	IP Address	Subnet Mask	Port	Firmware Version	MAC Address	Serial Number
1	ANNEXUS 301-2M	192.168.10.168	255.255.254.0	8000	V2.0build 081030	00-40-3c-2e-fb-4b	AN
2	ANNEXUS 301-2M	192.168.10.63	255.255.254.0	8000	V2.0build 090319	00-40-3c-2c-b9-1f	AN
3	ANNEXUS 301	192.168.10.72	255.255.254.0	8000		00-40-36-36-9f-e9	D
4	ANNEXUS 301-2M	192.168.10.254	255.255.254.0	8000	V2.0build 081030	00-40-3c-2c-b9-06	AN
5	ANNEXUS 301	192.168.11.211	255.255.254.0	8000		00-40-36-37-03-53	AN
6	ANNEXUS 301	192.168.10.64	255.255.254.0	8000		00-40-36-36-65-cl	D
7	ANNEXUS 316	192.168.10.62	255.255.255.0	8000	V2.1build 090321	00-40-30-11-11-11	D

Change IP Address

IP Address: 192 . 168 . 10 . 63 Port: 8000

Subnet Mask: 255 . 255 . 254 . 0 MAC Address: 00-40-3c-2c-b9-1f

Firmware Version: V2.0build 090319

Serial Number: ANNEXUS 301-C2M00200808288CwR200080975WC

Edit Save Cancel Close

Reset Password

To reset password to factory default, please call technical support for authorization code.

Authorization Code: Submit

3

IP Address/Subnet Mask Setup

Topics Covered

To edit the Annexus-series IP Address and/or the Subnet Mask, follow the steps below:

1. Select the desired device in the list
2. Click the **Edit** button. The *IP Address* and **Subnet Mask** fields will become enabled for editing.
3. Enter the device's new IP Address and Subnet Mask
4. Enter the device's password and click the **Save** button



Tip

Default password for all Annexus devices is "1234".

The Annexus Finder window displays a table of discovered devices and configuration options below it.

	Type	IP Address	Subnet Mask	Port	Firmware Version	MAC Address	Se
1	ANNEXUS 301-2M	192.168.10.168	255.255.254.0	8000	V2.0build 081030	00-40-3c-2e-fb-4b	AN
2	ANNEXUS 301-2M	192.168.10.63	255.255.254.0	8000	V2.0build 090319	00-40-3c-2c-b9-1f	AN
3	ANNEXUS 301	192.168.10.72	255.255.254.0	8000		00-40-36-36-9f-e9	D
4	ANNEXUS 301-2M	192.168.10.254	255.255.254.0	8000	V2.0build 081030	00-40-3c-2c-b9-06	AN
5	ANNEXUS 301	192.168.11.211	255.255.254.0	8000		00-40-36-37-03-53	AN
6	ANNEXUS 301	192.168.10.64	255.255.254.0	8000		00-40-36-36-65-cl	D
7	ANNEXUS 316	192.168.10.62	255.255.255.0	8000	V2.1build 090321	00-40-30-11-11-11	D

Change IP Address:

IP Address: 192 . 168 . 10 . 63 Port: 8000

Subnet Mask: 255 . 255 . 254 . 0 MAC Address: 00-40-3c-2c-b9-1f

Firmware Version: V2.0build 090319

Serial Number: ANNEXUS 301-C2M00200808288CwR200080975WC

Input Password:

Edit Save Cancel Close

Reset Password

To reset password to factory default, please call technical support for authorization code.

Authorization Code: Submit

4

Resetting Password to Factory Default

Topics Covered

If the Annexus device's password is unknown or has been lost, it needs be reset to the factory default setting before device's IP Address and Subnet mask configurations may be changed.

To reset the device's password, please follow the steps below:

1. Contact our technical support department at 1.877.877.7241 or by email at support@i3dvr.ca
2. Inform our technical support representative that the password for your Annexus device needs to be reset. Write down the **Authorization Code** provided to you.
3. Enter the **Authorization Code** obtained from our technical support representative into the corresponding field in the Annexus Finder window
4. Click the **Submit** button. The device's password will be reset to the factory default setting: **1234**



Note

Custom settings with the exception of the default login and password will not be reset after the Authorization Code is submitted.

Index

A

Annexus Finder, 1
 installation, 1
authorization code, 9

L

locate annexus encoders on LAN, 5

R

reset password to factory default, 9

S

setup annexus IP with Finder, 7
setup annexus Subnet Mask with Finder, 7

Annexus Finder 3.X.X User Guide

Copyright © 2008-2012 i³ International Inc.

All rights reserved. No part of this manual may be reproduced or transmitted in any form or by any means, electronic or mechanical, including photocopying, recording, or by any information storage or retrieval system, without the prior written permission of the copyright owner and the publisher. Annexus is a registered trademark of i³ International. i³ reserves the right to change the contents of this manual without notice.

Disclaimer

Annexus Finder User Guide is provided *as is*, without warranty of any kind, expressed or implied, including but not limited to performance, merchantability, or fitness for any particular purpose. Neither i³ International Inc. nor its dealers or distributors shall be liable to any person or entity with respect to any liability, loss, or damage, caused or alleged to have been caused directly or indirectly by this information. Furthermore i³ International Inc. reserves the right to revise this publication, and to make changes to the content at any time, without notice.

FCC

This device complies with part 15 of the FCC Rules. Operation is subject to the following two conditions: **(1)** This device may not cause harmful interference, and **(2)** this device must accept any interference received, including interference that may cause undesired operation.

Address:

i³ International Inc. • 780 Birchmount Road, Unit 16 • Scarborough • Ontario • Canada M1K 5H4

Tech Support: 1.877.877.7241/support@i3international.com

Web Site: www.i3international.com

Table of Contents

- 1. Installing Annexus Finder 1
- 2. Locating Annexus Devices 5
- 3. IP Address/Subnet Mask Setup 7
- 4. Resetting Password to Factory Default 9
- Index 10

1

Installing Annexus Finder

Topics Covered

Annexus Finder locates all Annexus-series devices on the network and displays important information about each individual Annexus device, including IP Address, Subnet Mask, Port number, Firmware version, and MAC Address.

Annexus Finder application allows configuring the IP Address and the Subnet Mask for the detected Annexus-series devices as well as resetting the device's password to the factory default: "1234".

The Annexus Finder is compatible with the following lines of Annexus devices:

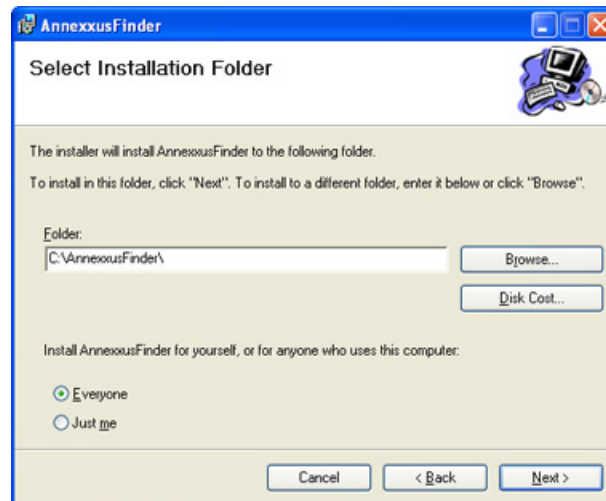
- Annexus 3XX series
- Annexus 401 series
- Annexus 32 series
- Annexus 41 series
- Annexus 51 series
- Annexus 52 series
- Annexus 53 series
- Annexus 49D
- Annexus 50D
- UI08

Each Annexus-series device is accompanied by the Resource CD. Locate the CD that was shipped with your Annexus device and insert it into your system's optical drive.

On the CD, locate and open the Annexus_Finder folder.

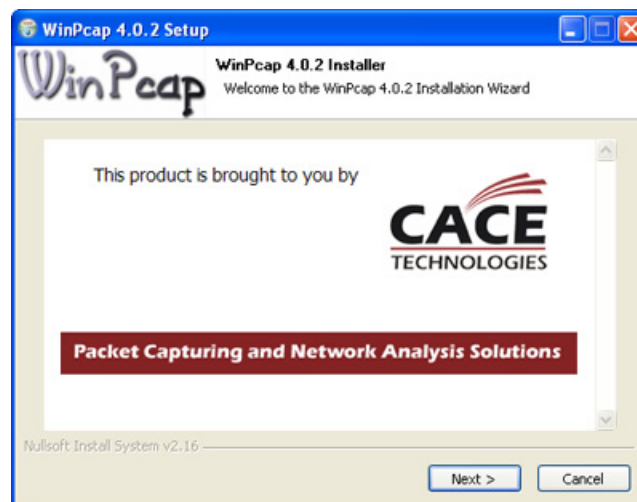
To install AnnexusFinder application, follow the steps below:

1. Double-click the **Setup.exe** file
2. In the first setup window, click **Next**
3. In the *Select Installation Folder* setup window, select installation drive and folder by clicking **Browse...** or keep the default installation folder (recommended). Select **Everyone** radio button and click **Next**.

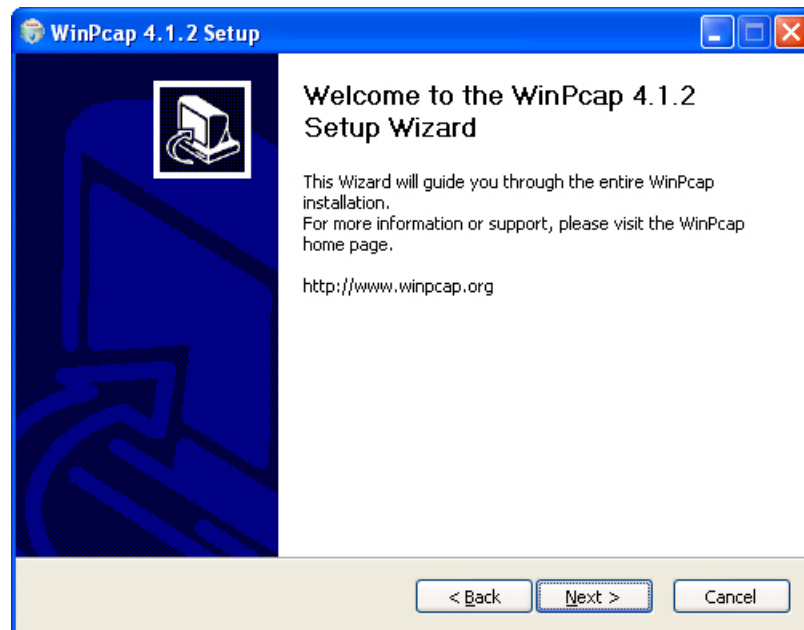


4. In *Confirm Installation* setup window, click **Next** to proceed with the installation
5. Wait while the Annexus Finder software is installing onto the local system
6. WinPcap installation will be automatically launched. You must install WinPcap library for the proper functioning of the Annexus Finder application.

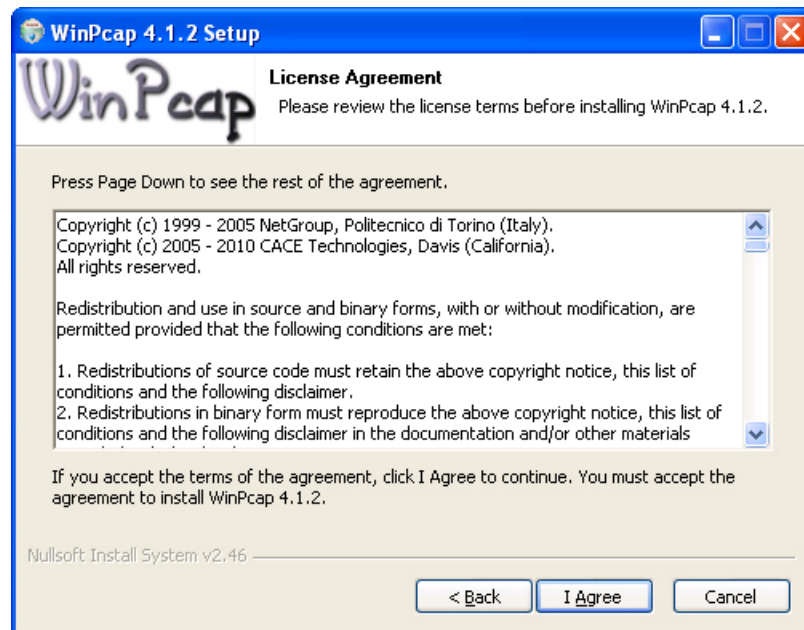
In the *WinPcap 4.0.2 Installer* window, click **Next**



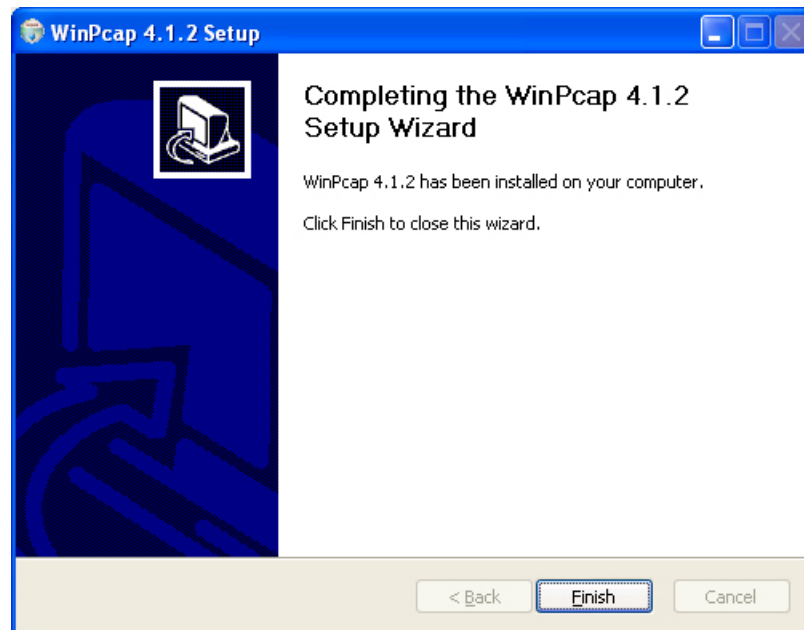
7. In the following WinPcap installer window, click **Next**



8. In the WinPcap *License Agreement* window, read the WinPcap license terms (scroll to read the entire document). Then click **I Agree** button.



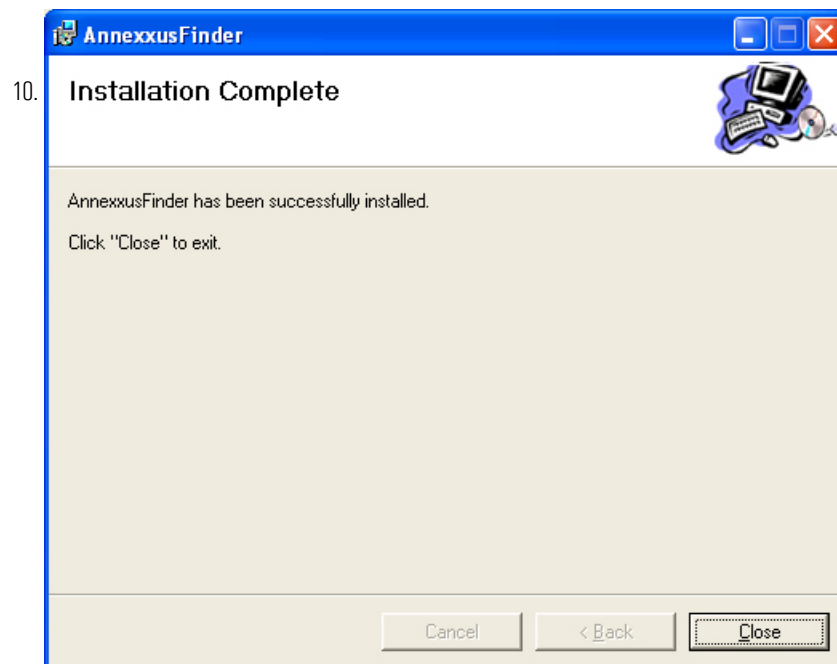
9. Wait while the WinPcap is installing onto the local system. Click **Finish** in the final WinPcap installation screen.



! Important

To the virus protection software users: make sure to allow WinPcap library to operate on your system.

Wait for the *Installation Complete* setup window to be displayed and click **Close**.



Annexus Finder is now installed on your system and is ready to use.

2

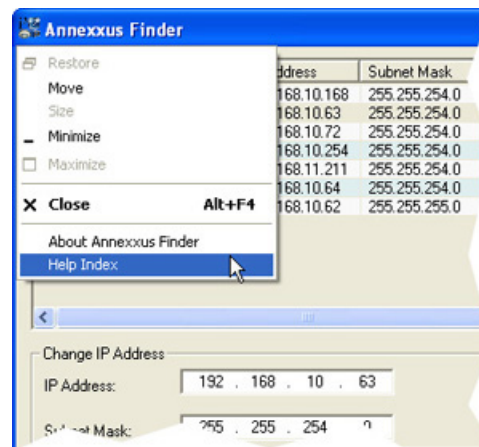
Locating Annexus Devices

Topics Covered



To launch Annexus Finder application, double-click the **AnnexusFinder** icon on the Desktop.

To display Annexus-series User Guide, click on the Annexus Finder icon in the top left corner of the Annexus Finder window and select **Help Index** from the drop-down menu.



Annexus Finder window will be displayed. All Annexus-series devices on the network will be automatically detected and displayed in the Annexus Finder list. In the example below, Annexus Finder was able to locate four (4) Annexus 301 IP cameras and three (3) Annexus 301-2M MegaPixel cameras (301C2M or 301D2M) on the local network.

By selecting a specific device in the list with the mouse cursor, detailed information for each device will be displayed underneath: IP Address, Subnet Mask, Port, MAC Address, Firmware version, Serial Number.

The **Annexus Finder** application window displays a table of discovered devices. Below the table is a configuration panel with fields for IP Address, Subnet Mask, Port, MAC Address, Firmware Version, and Serial Number. The **Edit** button is highlighted with a red box. At the bottom, there is a **Reset Password** section with an authorization code field and a **Submit** button.

	Type	IP Address	Subnet Mask	Port	Firmware Version	MAC Address	Se
1	ANNEXUS 301-2M	192.168.10.168	255.255.254.0	8000	V2.0build 081030	00-40-3c-2e-fb-4b	AN
2	ANNEXUS 301-2M	192.168.10.63	255.255.254.0	8000	V2.0build 090319	00-40-3c-2c-b9-1f	AN
3	ANNEXUS 301	192.168.10.72	255.255.254.0	8000		00-40-36-36-9f-e9	D
4	ANNEXUS 301-2M	192.168.10.254	255.255.254.0	8000	V2.0build 081030	00-40-3c-2c-b9-06	AN
5	ANNEXUS 301	192.168.11.211	255.255.254.0	8000		00-40-36-37-03-53	AN
6	ANNEXUS 301	192.168.10.64	255.255.254.0	8000		00-40-36-36-65-cl	D
7	ANNEXUS 316	192.168.10.62	255.255.255.0	8000	V2.1build 090321	00-40-30-11-11-11	D

Change IP Address

IP Address: 192 . 168 . 10 . 63 Port: 8000

Subnet Mask: 255 . 255 . 254 . 0 MAC Address: 00-40-3c-2c-b9-1f

Firmware Version: V2.0build 090319

Serial Number: ANNEXUS 301-C2M00200808288CwR200080975WC

Edit Save Cancel Close

Reset Password

To reset password to factory default, please call technical support for authorization code.

Authorization Code: Submit

3

IP Address/Subnet Mask Setup

Topics Covered

To edit the Annexus-series IP Address and/or the Subnet Mask, follow the steps below:

1. Select the desired device in the list
2. Click the **Edit** button. The *IP Address* and **Subnet Mask** fields will become enabled for editing.
3. Enter the device's new IP Address and Subnet Mask
4. Enter the device's password and click the **Save** button



Tip

Default password for all Annexus devices is "1234".

The Annexus Finder window displays a table of discovered devices and configuration options below it.

	Type	IP Address	Subnet Mask	Port	Firmware Version	MAC Address	Se
1	ANNEXUS 301-2M	192.168.10.168	255.255.254.0	8000	V2.0build 081030	00-40-3c-2e-fb-4b	AN
2	ANNEXUS 301-2M	192.168.10.63	255.255.254.0	8000	V2.0build 090319	00-40-3c-2c-b9-1f	AN
3	ANNEXUS 301	192.168.10.72	255.255.254.0	8000		00-40-36-36-9f-e9	D
4	ANNEXUS 301-2M	192.168.10.254	255.255.254.0	8000	V2.0build 081030	00-40-3c-2c-b9-06	AN
5	ANNEXUS 301	192.168.11.211	255.255.254.0	8000		00-40-36-37-03-53	AN
6	ANNEXUS 301	192.168.10.64	255.255.254.0	8000		00-40-36-36-65-cl	D
7	ANNEXUS 316	192.168.10.62	255.255.255.0	8000	V2.1build 090321	00-40-30-11-11-11	D

Change IP Address:

IP Address: 192 . 168 . 10 . 63 Port: 8000

Subnet Mask: 255 . 255 . 254 . 0 MAC Address: 00-40-3c-2c-b9-1f

Firmware Version: V2.0build 090319

Serial Number: ANNEXUS 301-C2M00200808288CwR200080975WC

Input Password:

Edit Save Cancel Close

Reset Password

To reset password to factory default, please call technical support for authorization code.

Authorization Code: Submit

4

Resetting Password to Factory Default

Topics Covered

If the Annexus device's password is unknown or has been lost, it needs be reset to the factory default setting before device's IP Address and Subnet mask configurations may be changed.

To reset the device's password, please follow the steps below:

1. Contact our technical support department at 1.877.877.7241 or by email at support@i3international.com
2. Inform our technical support representative that the password for your Annexus device needs to be reset. Write down the **Authorization Code** provided to you.
3. Enter the **Authorization Code** obtained from our technical support representative into the corresponding field in the Annexus Finder window
4. Click the **Submit** button. The device's password will be reset to the factory default setting: **1234**



Note

Custom settings with the exception of the default login and password will not be reset after the Authorization Code is submitted.

Index

A

Annexus Finder, 1
 installation, 1
authorization code, 9

L

locate annexus encoders on LAN, 5

R

reset password to factory default, 9

S

setup annexus IP with Finder, 7
setup annexus Subnet Mask with Finder, 7