

# DNVR (Digital Network Video Recorder)

## USER MANUAL

EG-6CPOS-4  
EG-6CPOS-8  
EG-6CPOS-16  
EG-6CP1S-16  
EG-6CP2S-32

**Before using this system, please read the user manual**

**carefully.**

**Attention:**

- \*Don't use the system at place with high humidity or dust or dirty.
- \*Avoid direct sunshine or being heated.
- \*Leave the system away from magnetism objects.
- \*Avoid high or low temperature(recommended temperature range: 5°C-35°C).
- \*Close the system before installing the hardware and software.
- \*Don't place the system at some place where will likely have a shake.
- \*Please use it at the aeration place.
- \*Radio, television or wireless communicate device could cause damage to the system.
- \*Don't dismantle the system by yourself freely.
- \*Don't put heavy object on the system.

## **Table of Content**

<u>Attention</u>	2
<u>Chapter 1. Product overview</u>	3
1.1 Products features	3
1.2 Hardware requirement	4
1.3 Software requirement	4
<u>Chapter 2. Install the system</u>	5
2.1 Install driver	5
2.2 Install software	6
2.3 Apply for DDNS and p2p account	6
2.4 Channel number and draw mode selection	7
<u>Chapter 3. Operate Main system</u>	9
3.1 Log on system	9
3.2 Main screen of server	9
3.3 Setup	11
3.3.1 Local user management	11
3.3.2 Setup record with audio	12
3.3.3 Preview	13
3.3.4 Record	13
3.3.5 Alarm	14
3.3.6 Schedule	17
3.3.7 PTZ	18
3.3.8 Authorization(network user)	18
3.3.9 Others	20

<b>3.3.10 Color Scheme</b>	<b>21</b>
<b>3.3.11 TV out</b>	<b>22</b>
<u>Chapter 4. Playback</u>	<b>22</b>
<u>Chapter 5. Remote view</u>	<b>25</b>
<b>5.1 Remote view by client software</b>	<b>25</b>
<b>5.2 Remote view via IE</b>	<b>27</b>
<b>5.3 Mobile view</b>	<b>28</b>
<u>Appendix 1. Auto login and auto run schedule setting</u>	<b>30</b>
<u>Appendix 2. Monitor audio and record audio synchronous</u>	<b>31</b>
<u>Appendix 3. Internet Explorer browser setting</u>	<b>33</b>
<u>Appendix 4. Pre-set setting</u>	<b>34</b>

## Chapter 1. Product overview

### **1.1 Products features**

- Run under Windows XP 32bit OS, Windows Vista 32bit OS;
- 6805 chipset 10-bit ADCs image quality;
- Lightning-Proof design;
- 6805 chipset could display in real time or not real time, if you choose one channel each chipset, then the display will be real time. And if you choose two, three or four channels each chipset, then the display will be not real time;
- Adjust the setting for any channel, and can be applied to other channels;
- Snapshot the dynamic picture or static picture while playback;
- Display, record, playback, control, backup can be done simultaneously;
- Snapshot picture for single frame or snapshot picture for all frames while live displaying;
- Motion detection, alarm function;
- Support different types of high speed dome, PTZ controller and alarm decoder;
- High quality network transmitting function;
- Remote view, playback, PTZ control, through Wan or LAN;
- Search by the date, time, location, alarm period, snapshot pictures;
- Complete automatically operation: user can set record schedule for each camera within all the periods of each week; and the system will record according to the schedule;

- User can set alarm activation schedule for each alarm sensor within all the periods of each week, the alarm sensor will activate according to the schedule;
- User can set motion detection for each camera within all the periods of each week, and the motion detection will activate according to the schedule;
- Circularly switch function; Can set single channel or multi channels to switch circularly;
- User-friendly interface, it is easy for user to operate it;
- The system will show hard disk is full if the hard disk will up to the capability.

## 1.2 Hardware requirement

- RAM: 512MB or above
- Display card: ATI128MB or above, Geforce2 MX400 128MB or above
- CPU: Celeron D2.8 G or above or Intel P4 2.4 G or above
- Resolution of monitor: 1024\*768(32bits color)
- HDD: IDE, SATA, SCSI, 80GB or above
- Motherboard: Intel Chipset 865 or above

## 1.3 Software requirement

- Windows 2000/Windows XP/Windows Vista 32bit OS
- DirectX 9.0
- The latest driver for display card

*Attention: before installing the driver of display card, please install the driver of motherboard; otherwise it will affect the function of display card and video surveillance system*

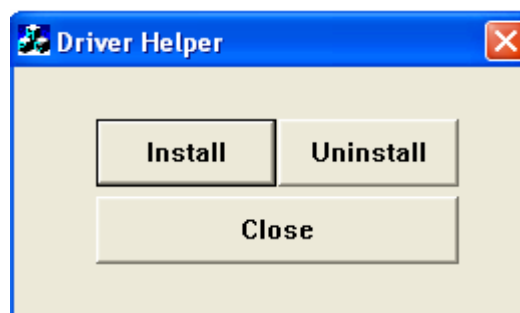
## Chapter 2. Install the system

### 2.1 Install driver

2.1.1. Insert the CD into CD/DVD-ROM, it will pop up a installation guide window, shown as below:



Select *Installation Driver* option, it will pop up the driver installation window:



2.1.2. Click on *Install* button to install the driver, and it will show: *Installing driver, please wait...*



2.1.3. Wait for about 30 seconds, it will show *installation finished*:



## 2.2 Install Software

2.2.1 Select *Installation Server* option, it will pop up the DVR server installation window:



Click on Install button to begin install the software.

**Remark: If you tick “Install Video Board Driver” option, it will install the card driver at the same time while installing the software.**

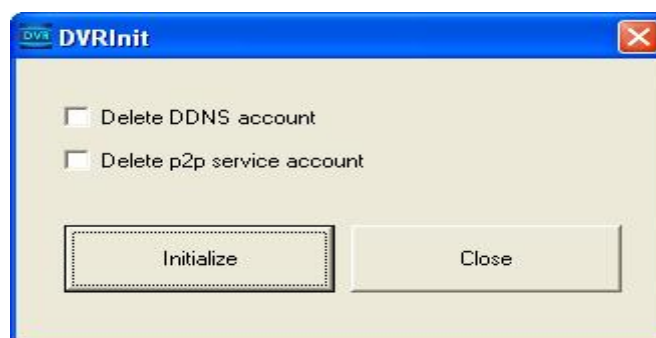
**If tick “Install Record File Protect Driver” option, it will install a file protect driver, and you can not delete the recording file manually. The recording file can only be deleted by the delete tool, or be overwritten automatically by software while the HDD capacity is nearly full.**

**Note: For this software, users also can choose to run the software directly without installation.**

**(Copy all the files from CD to PC, and run the DVRInit.exe to initialize, run DVR.exe to run DVR surveillance system.)**

## 2.3. Apply for DDNS and p2p account

2.3.1 First, initialize the software by double click on the DVRInit.exe icon.



Click on initialize button to begin initial. Please wait a moment, it will indicate

initialize successfully.

If you want to delete DDNS account, please tick "Delete DDNS account" option, then it will delete DDNS account at the same time.

If you want to delete p2p account, please tick "Delete p2p service account" option, then it will delete p2p account at the same time.

2.2.2 After initialization completely double click on DVR.exe icon, and go to the DDNS and p2p account application interface. You can apply for a DDNS and a p2p account in this window.

The screenshot shows the 'dvrloader' application window. It contains three main sections:

- DDNS service application:** A red warning message at the top reads "DDNS service application, Please confirm that your computer is connecting to internet before application". Below this, there are two input fields: "Domain account" (containing "viewnvr.com") and "Password". An "Apply" button is located below the fields.
- P2P service application:** A red warning message at the top reads "Please confirm that your computer is connecting to internet before application.". Below this, there are two input fields: "Domain account" and "Password". A checkbox labeled "Needs check password when connect with client" is checked. A red note below the fields reads "Attention: password must not be digits from 0 to 100000". An "Apply" button is located below the fields.
- Video card Global parameter setup:** This section contains several radio button options:
  - Video standard:  PAL,  NTSC
  - Divided 1 real-time channel to Mult Non Realtime channels:  1,  2,  3,  4
  - Video resolution:  CIF(352X288),  SIF(320X240),  AIF(288 X 224),  BIF(256 X 208),  QCIF(176X144)A red note below the options reads "(Note: If the image filamentous please set the video resolution)". An "OK" button is located at the bottom of this section.

Input a account name and password then click on apply button to apply. After completely application, it will show application succeeded information on the top of the window.

**Note: If you do not want to use the DDNS or the p2p, you can pass it without application by click on Next button directly.**

**If you want to apply for another DDNS account or p2p account, please initialize the software first, then apply for another one.**

Standard: Select the right Video Standard (PAL or NTSC).

**Remark: This series cards adopt 6805 chipset, and one chipset can support 4 channels at max. So, there are 4 options of Channels/Device. The default is 2 channels/Device.**

**Take a EG-6CPOS-4 for example,**

**the default is 2, so it will show 2 channels in software by default.**

**If you choose 1 here, it will show only 1 channel in software.**

**If choose 3, it will show 3 channels in software.**

**And if 4, it will show 4 channels in software**

Video Quality: you could adjust it and get different video quality. The default is the highest.

Draw Mode: For a better compatible with different motherboards and graphic cards, we provide 5 draw modes to choose. The default mode is mode 1. After selected mode 1, it will show a live video image in the right window. And it will pop up a prompt window, show as below:



If the video quality is good, then click on "Yes" button, and go to next step.

If the video quality is not good or you want to try another mode, please click on "No", and it will alter to next mode automatically.

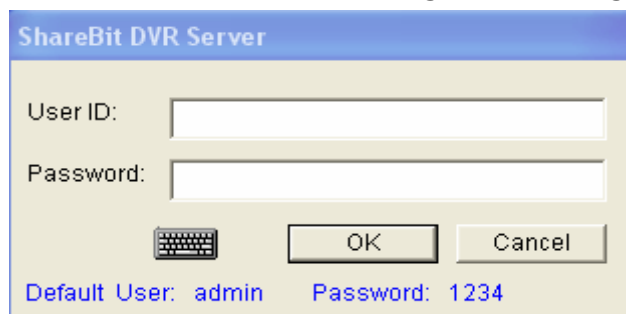
After selected the right Video Standard, channels/device, draw mode, and watched the live video image, click yes to confirm, and click on finish to finish these setting and enter into the DVR surveillance interface.

**Note: If you want to change the channels/device number or draw mode after finished these setting, please initialize the software first, then set again.**

## Chapter 3. Operate Main system

### 3.1 log on system

Click "DVR.exe" under sever folder, user will get following login window:



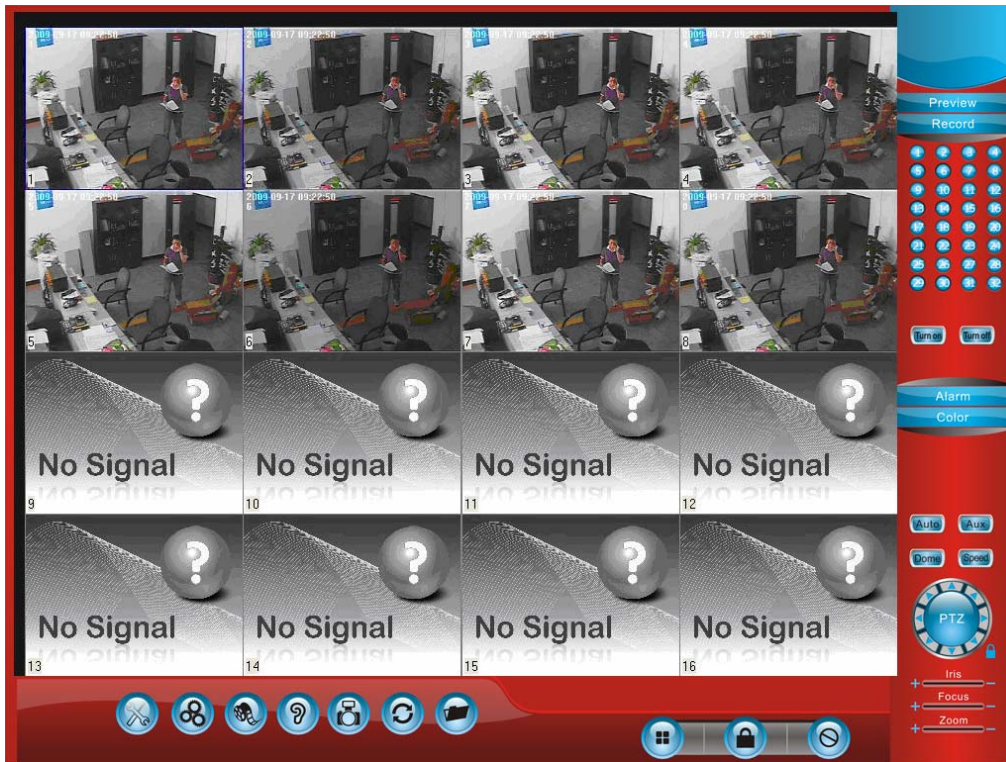
**User ID: admin**



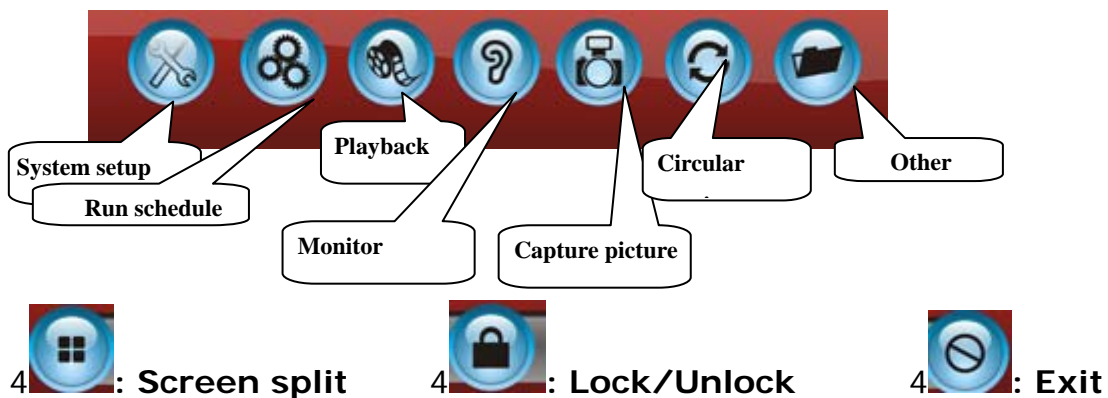
**Password: 1234**

Press "OK" and login into the DVR surveillance system.

### 3.2 Main screen of server

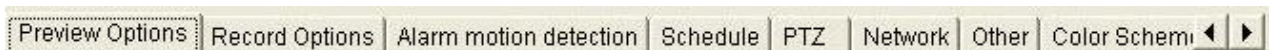


1



**Note:** When the button is selected, it will become red from grey.

**2. System setup:** click it, user can get following icon to set the preview, record, alarm, schedule, PTZ, authorization, others as below picture




**3. Run schedule:** click it, the system will run according to the schedule

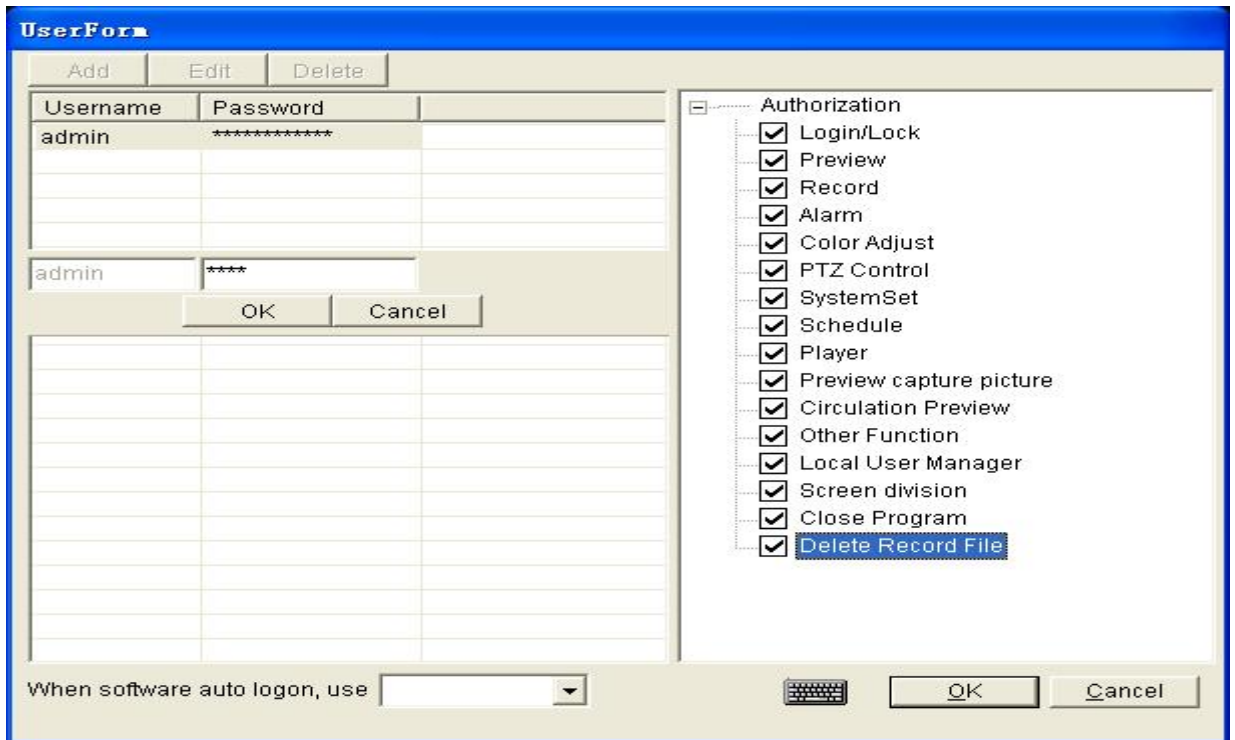
4. **Playback:** playback the recorded files
5. **Monitor:** Monitor the audio
6. **Capture picture:** it allows the function of snapshot
7. **Circular preview:** Auto scan for different channels, the default interval time is five seconds.
8. **Other:** contains minimize, user management, remote connect information, disk status.
9. **Preview:** choose the channel that you want to preview, click the number, it will change to preview status when the number color change from grey to green.
10. **Record, alarm:** choose the channel that you want to record or start alarm function, click the channel number, it will start to record or start alarm function when the number color change from grey to green
11. **Color:** adjust black/white, brightness, saturation according the actual situation
12. **PTZ:** click the PTZ, user could adjust the PTZ setting.

## 3.3 Setup

### 3.3.1 Local user management



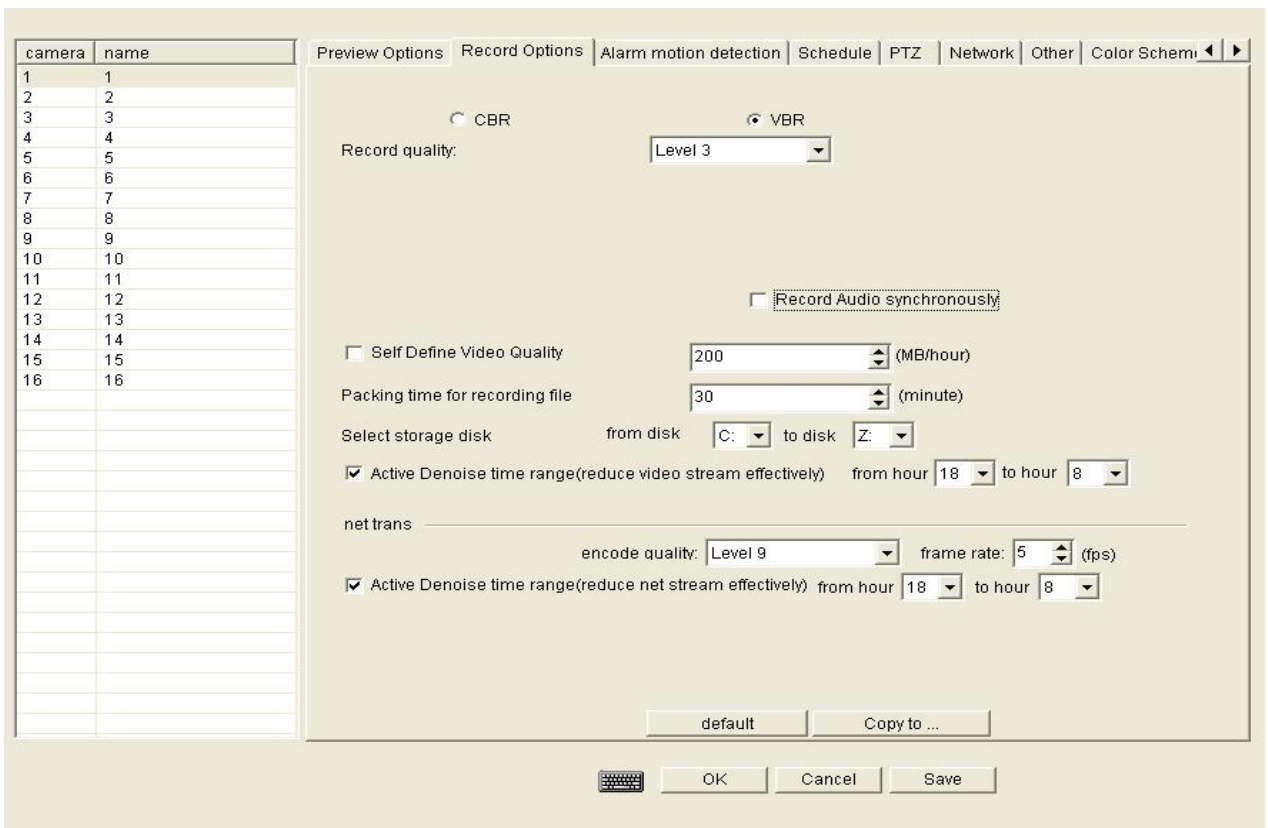
Click "other" button  , and get tool list, click "**local user management**", "**user management**" window will pop-up. "user management" is only for setting authority of server user, it is different from the "**Network user authorization** " (*If user want to remote view through IE , user need to set "Network user authorization "*)



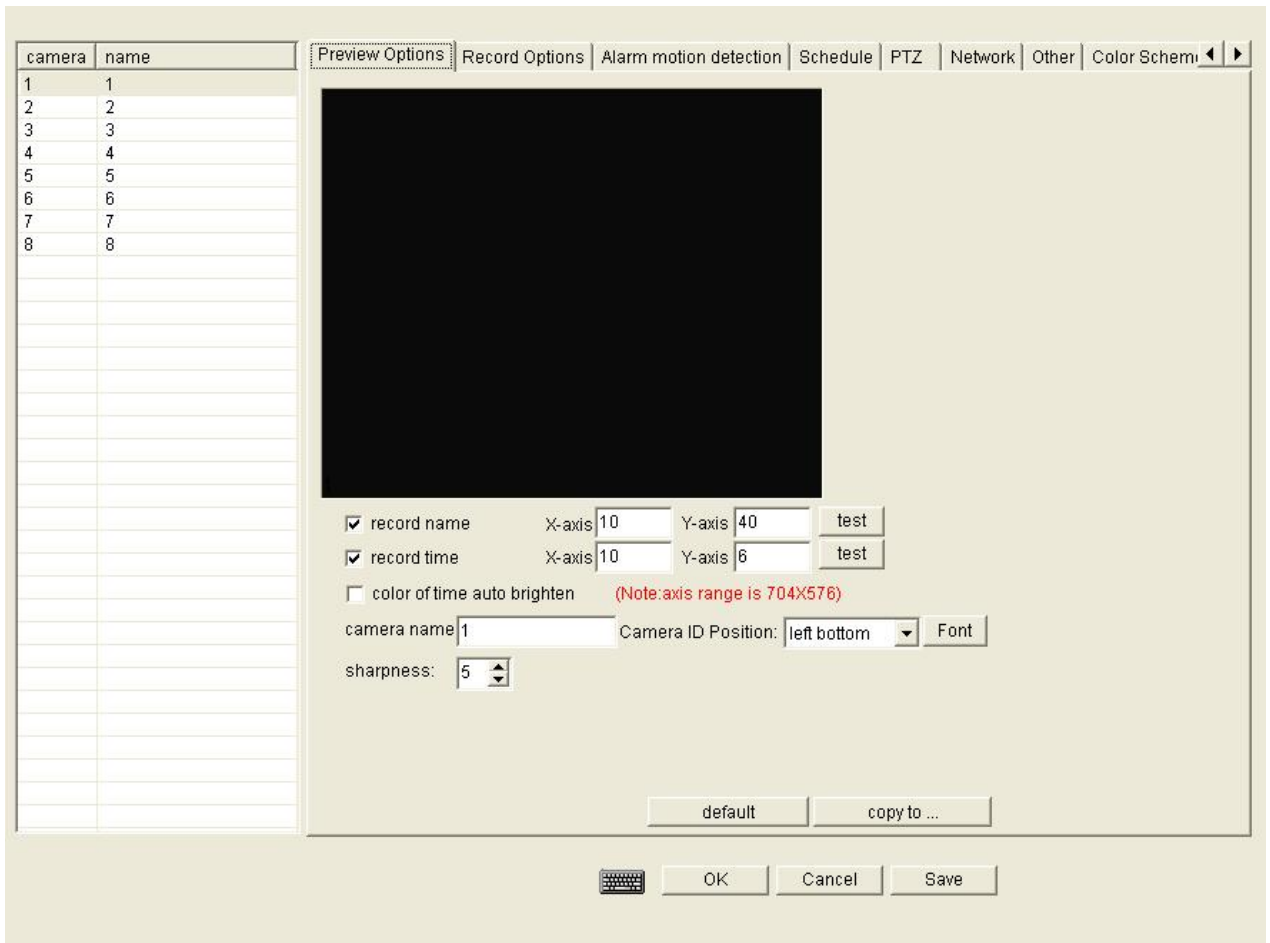
Set the authorization first, then click "add", type the new user name and password, then press "ok" to save the setting.

### 3.3.2 Setup record with audio

Click "record options" under "system setup", get following interface. Tick "Record Audio Synchronously" option, and copy to other channels that you want to record audio synchronously, then save the setting.



### 3.3.3 Preview



**Record name:** Tick it, while recording, it will show the channel name.

**Record time:** Tick it, while recording, it will show the system time.

**X-axis, Y-axis:** Adjust the shown position of the channel name or record time.

**Color of time auto brighten:** the color will change if record.

**Channel name:** set the channel name.

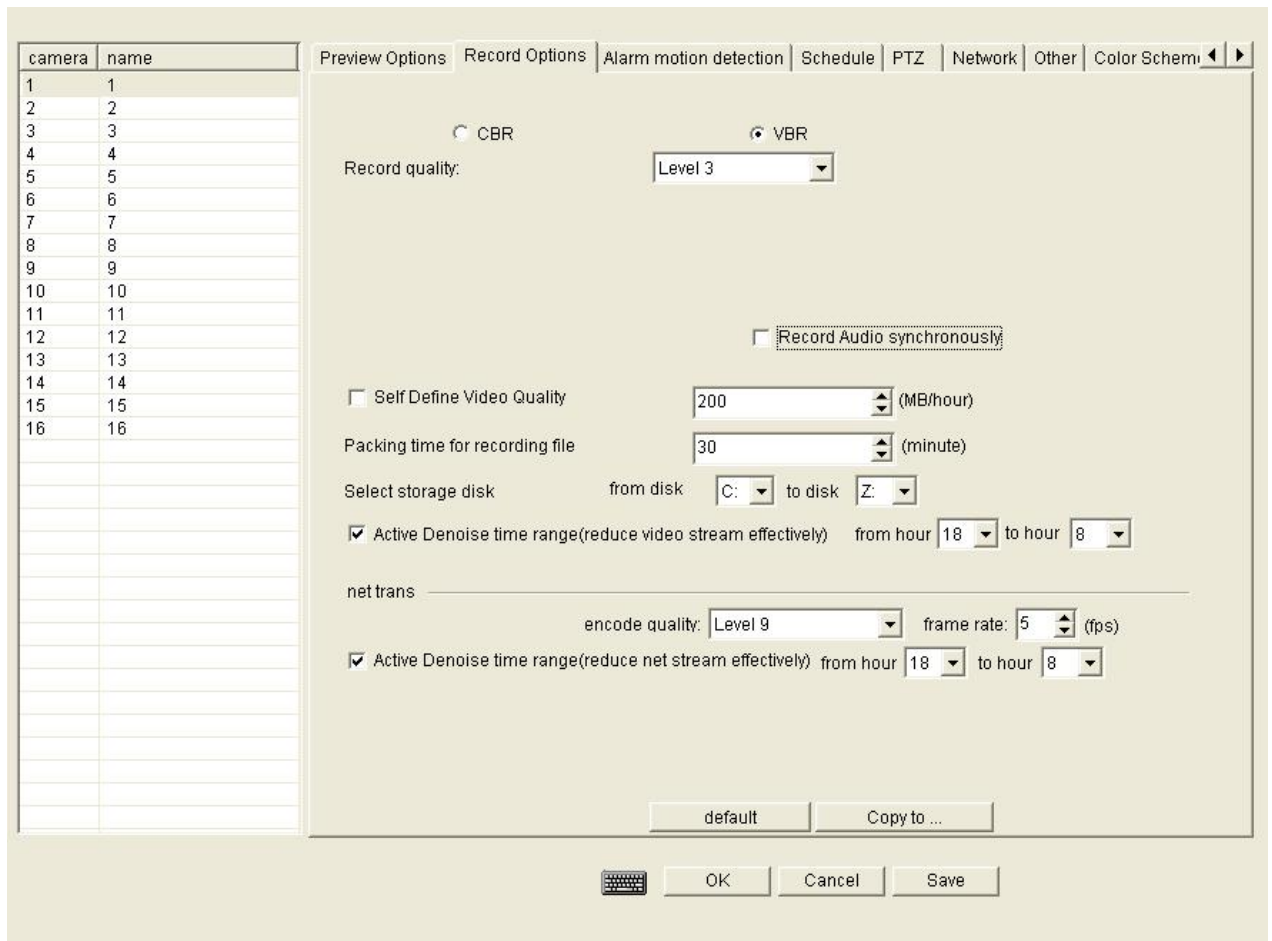
**Camera ID Position:** set the position of the camera ID. Could choose in "left top, right top, left bottom, right bottom".

**Font:** the font of the channel name will be changed if you choose set a font.

**Sharpness:** The sharpness of record name and record time.

### 3.3.4 Record

In this part, user can set the video quality for recorded files.



**CBR:** Constant bitrate, select it, the bitrate will not change

**VBR:** Variable bitrate, select it, the bitrate will change according to actual situation

**Record quality:** provide 6 levels of record quality (level 1-6), "best" is recommended.

**Record audio synchronously:** record audio while recording video.

**Self define video quality:** user can define the video quality by himself

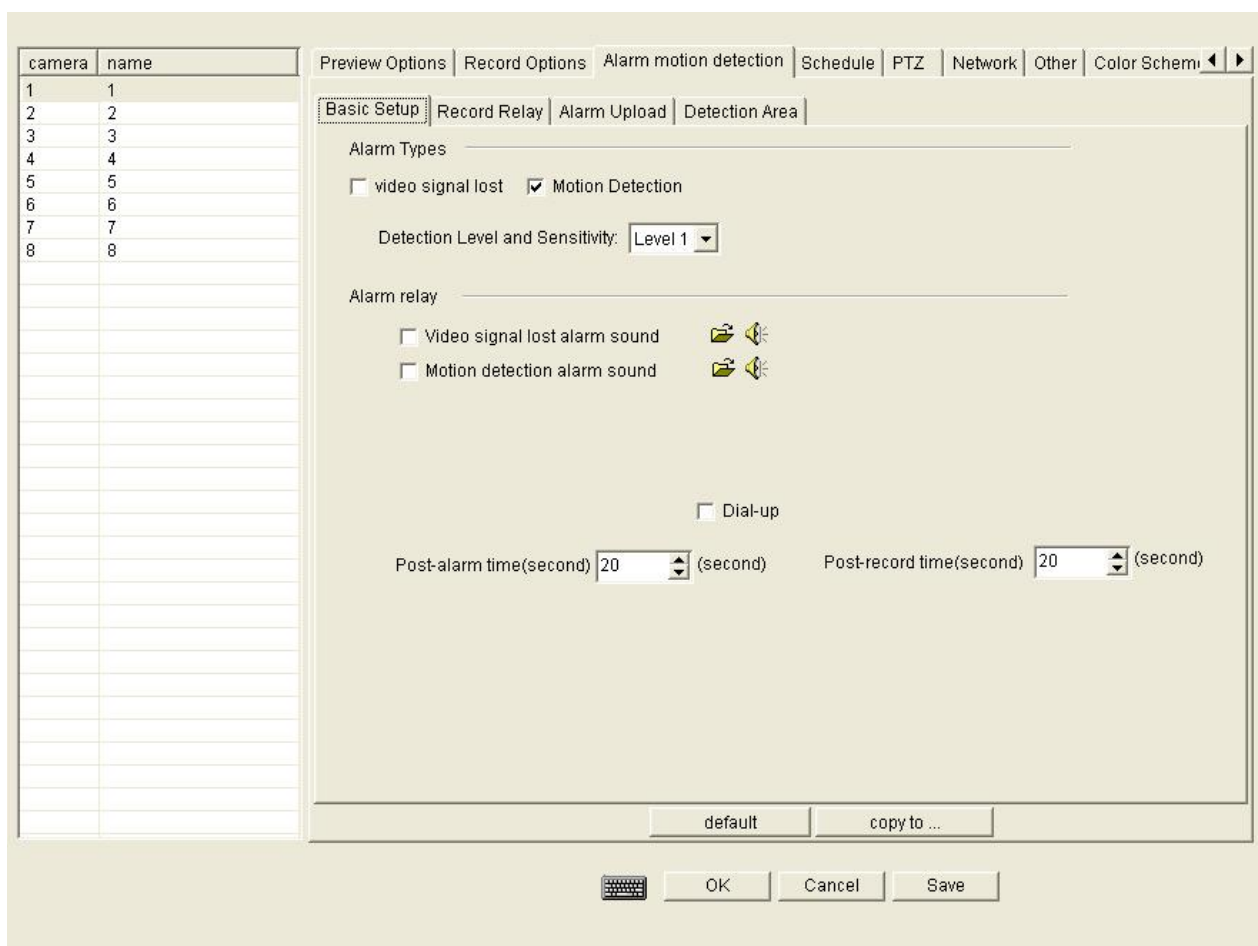
**Packing interval for recording file:** Set the packing interval.

**Select storage disk:** set the storage location.

**Active denoise time range:** set the time range to reduce noise, from 18:00 to 8:00 is recommended.

**Net trans:** set the network transmit quality, provide 5 levels (level 6-11) and self define transmit frame rate. 5FPS is recommended.

### 3.3.5 Alarm



## Basic setup

**Video Signal lost:** tick it, if any video signal lost, the system will start to record

**Motion detection:** tick it, if any motion detected, the system will start to record

**Detection level and sensitivity:** to adjust the sensitivity of motion detection  
(The default level *super* is the best)

## Alarm relay:

**Video signal lost alarm sound:** tick it, and select an audio file. If alarm is triggered by video signal lost, you will hear the sound you have selected

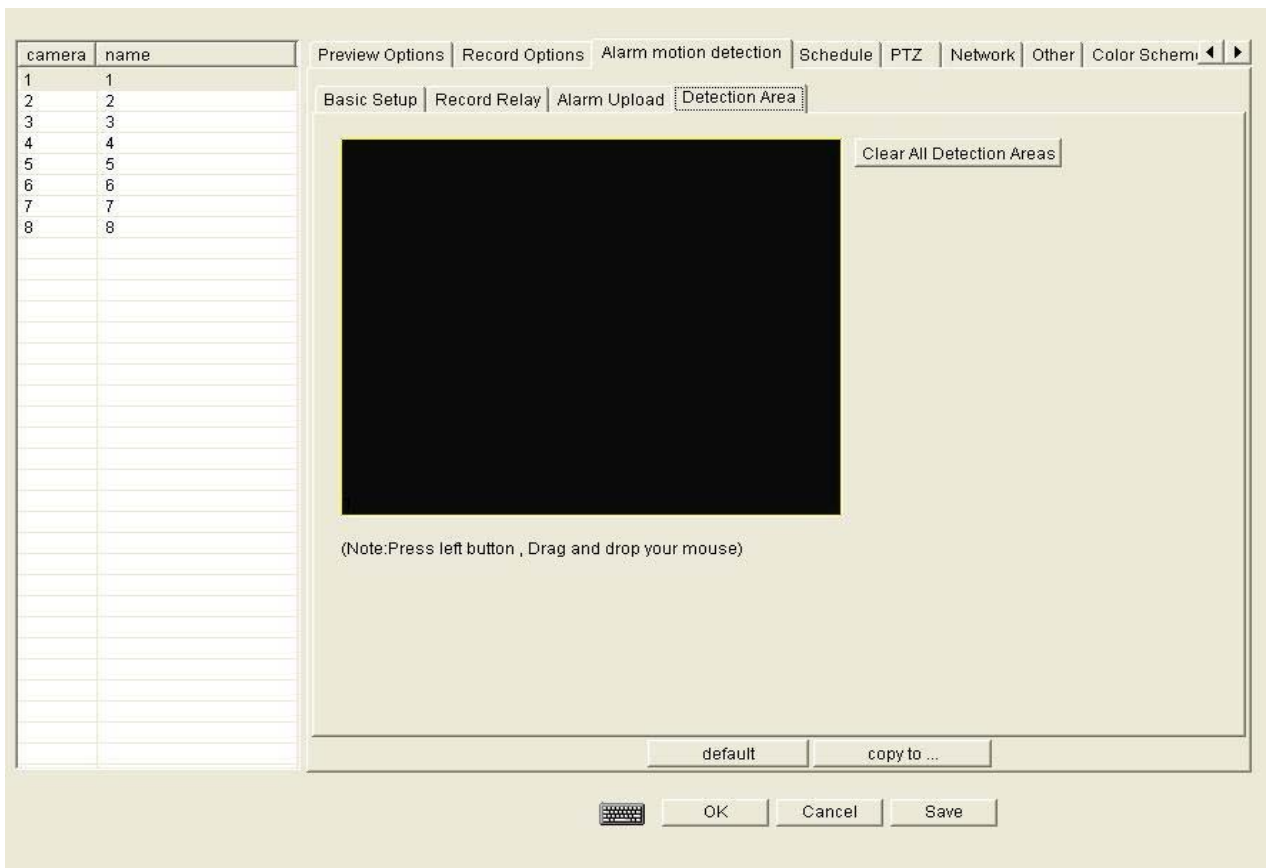
**Motion detection alarm sound:** tick it, and select an audio file. If alarm is triggered by motion, you will hear the sound you have selected

**Post-alarm time:** set the post-alarm time.

**Post-record time:** set the post-record time.

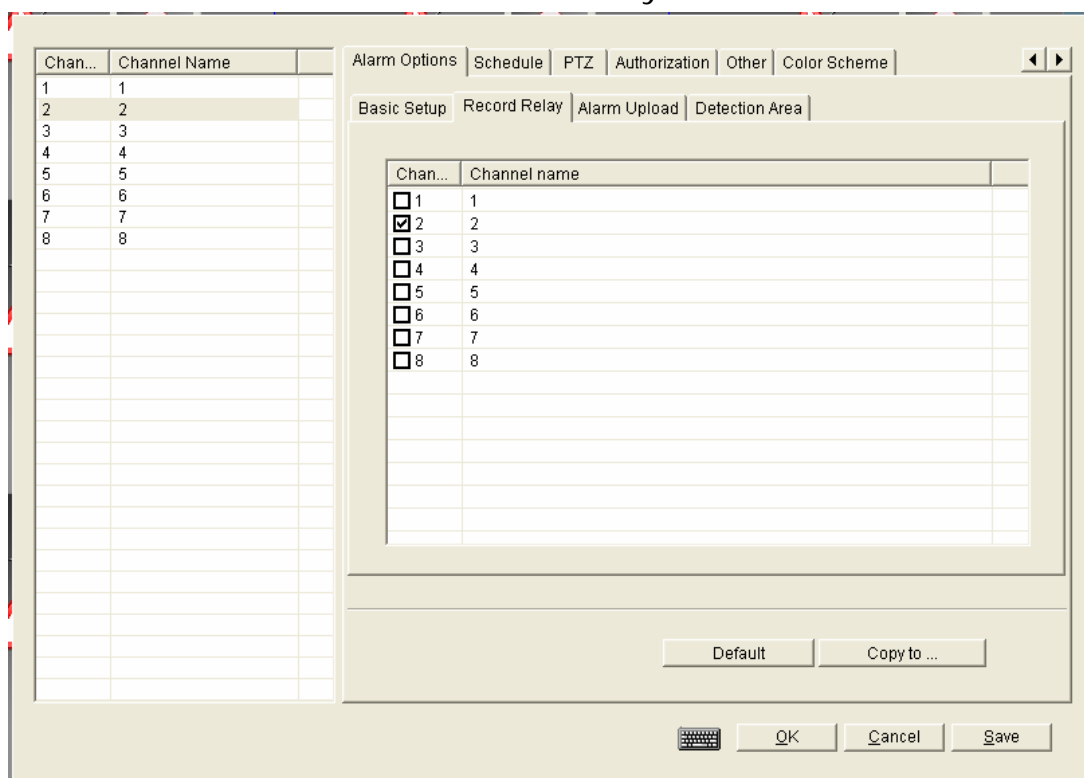
## Detection area



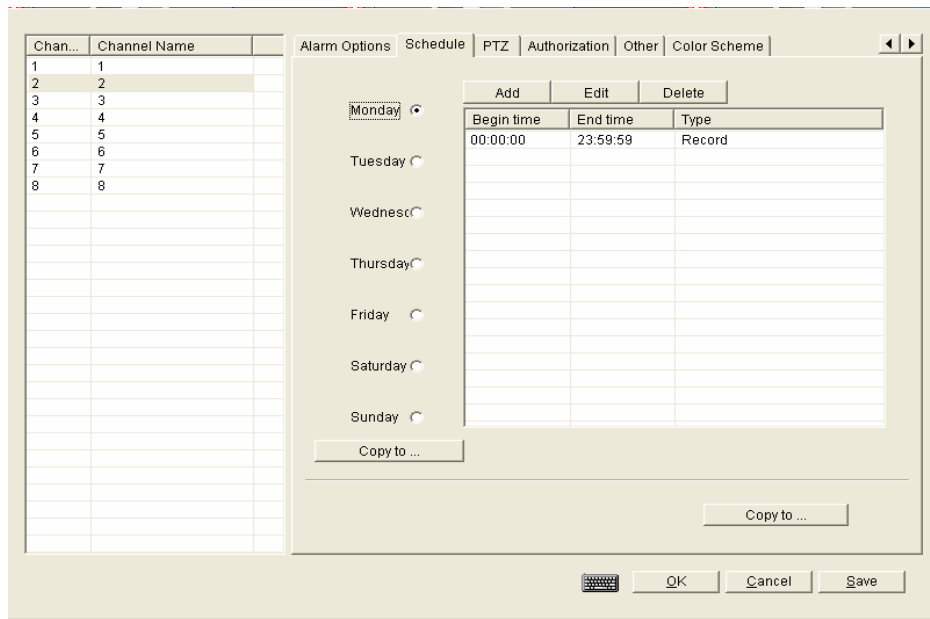


The default area is the whole area (in the yellow square). User could clear the current detection area, and set a different area according to request.

**Record Relay:** It will be take effect when choose some channels to link-act recording. For example: set 5 channel to test, link-act record channel is 3,4,5. Once some moving objects in choose area of 5 channel, then 3,4,5 channels will start to record simultaneously.



### 3.3.6 Schedule

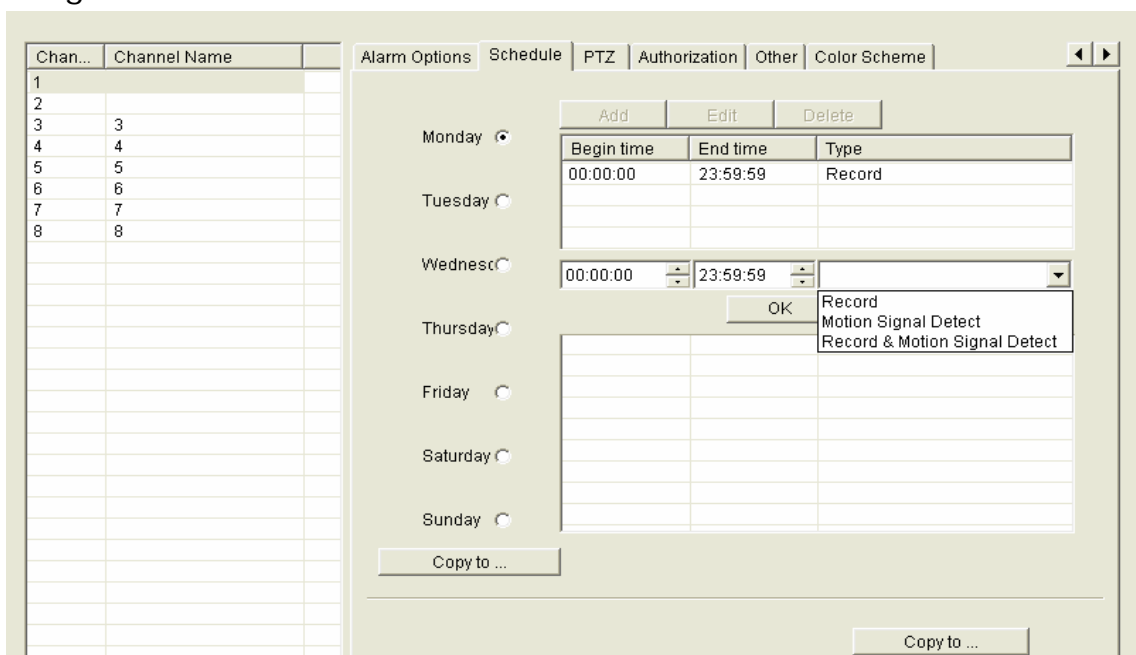


Set the record schedule here.

Basic working mode

S/N	Basically work model	Remark
1	Record	Continual record.
2	Motion Signal detect	If any motion detected, the record will be triggered, and system begin to record.
3	Record & Motion signal detection	If any motion detected, the record will be triggered, and system begin to record. If no motion, it is continual record.

**How to set:** choose channel (for example: channel 1) and date (for example: Monday), select the default record in the table and click "Edit", user will get following information:





Enter the start time, end time, and select record type, click "OK" to confirm, then click on "copy to.." , copy to other days and channels, press "save" to finish setup.

After finished the setting, go back to the main interface, and Click "run on



schedule" button, the button color will change from grey to red, it indicates the schedule is working.

### 3.3.7 PTZ

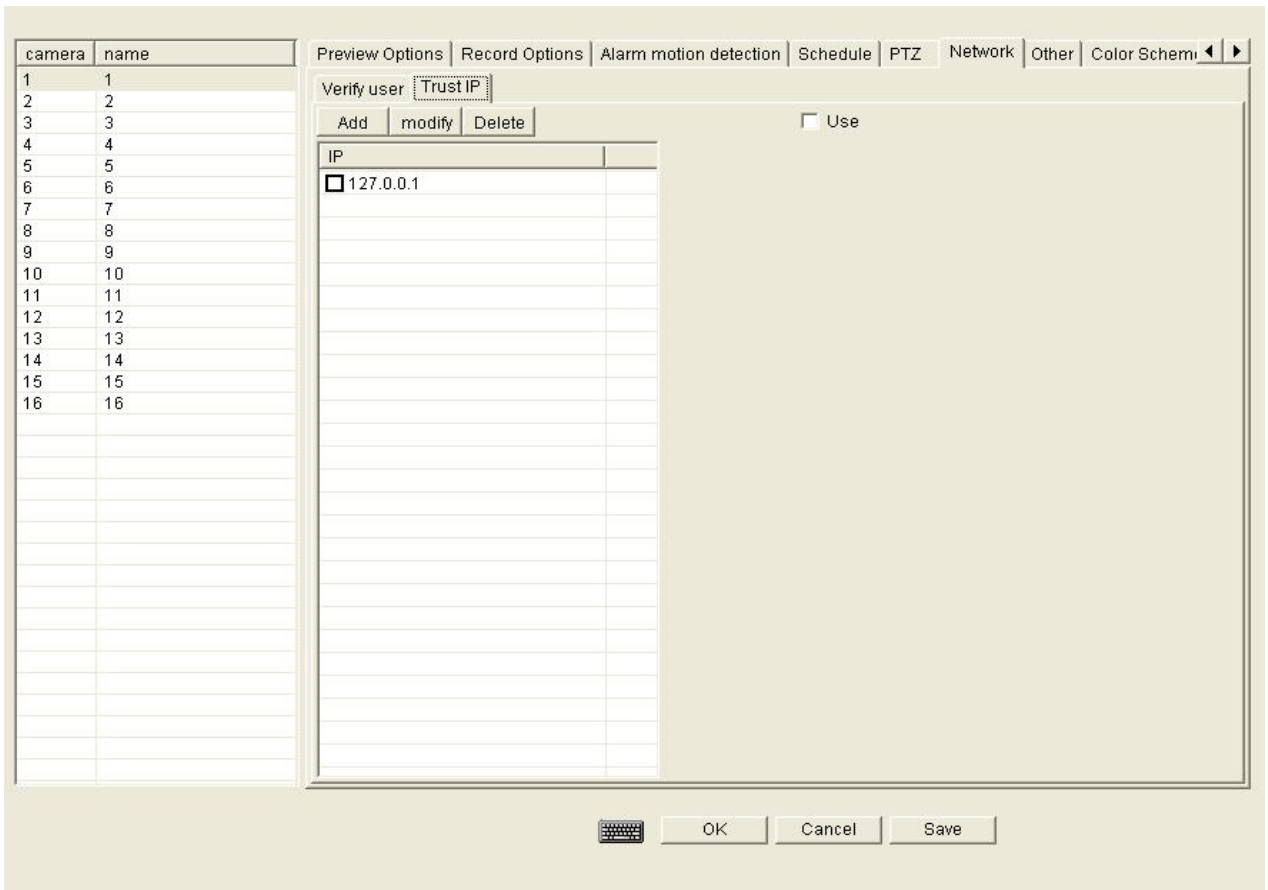
Set PTZ protocol (please confirm with your PTZ camera supplier about the correct protocol of your camera), the suitable baud rate and address of the PTZ decode.

camera	name	Camera	Protocol	Baud rate	COM Port	Address	Check Bit	Data Bit	Stop Bit
1	1	1	pelco_d_1	2400	COM1	1	None	8	1
2	2	2	pelco_d_1	2400	COM1	2	None	8	1
3	3	3	pelco_d_1	2400	COM1	3	None	8	1
4	4	4	pelco_d_1	2400	COM1	4	None	8	1
5	5	5	pelco_d_1	2400	COM1	5	None	8	1
6	6	6	pelco_d_1	2400	COM1	6	None	8	1
7	7	7	pelco_d_1	2400	COM1	7	None	8	1
8	8	8	pelco_d_1	2400	COM1	8	None	8	1

Preview Options | Record Options | Alarm motion detection | Schedule | **PTZ** | Network | Other | Color Schemi ◀ ▶

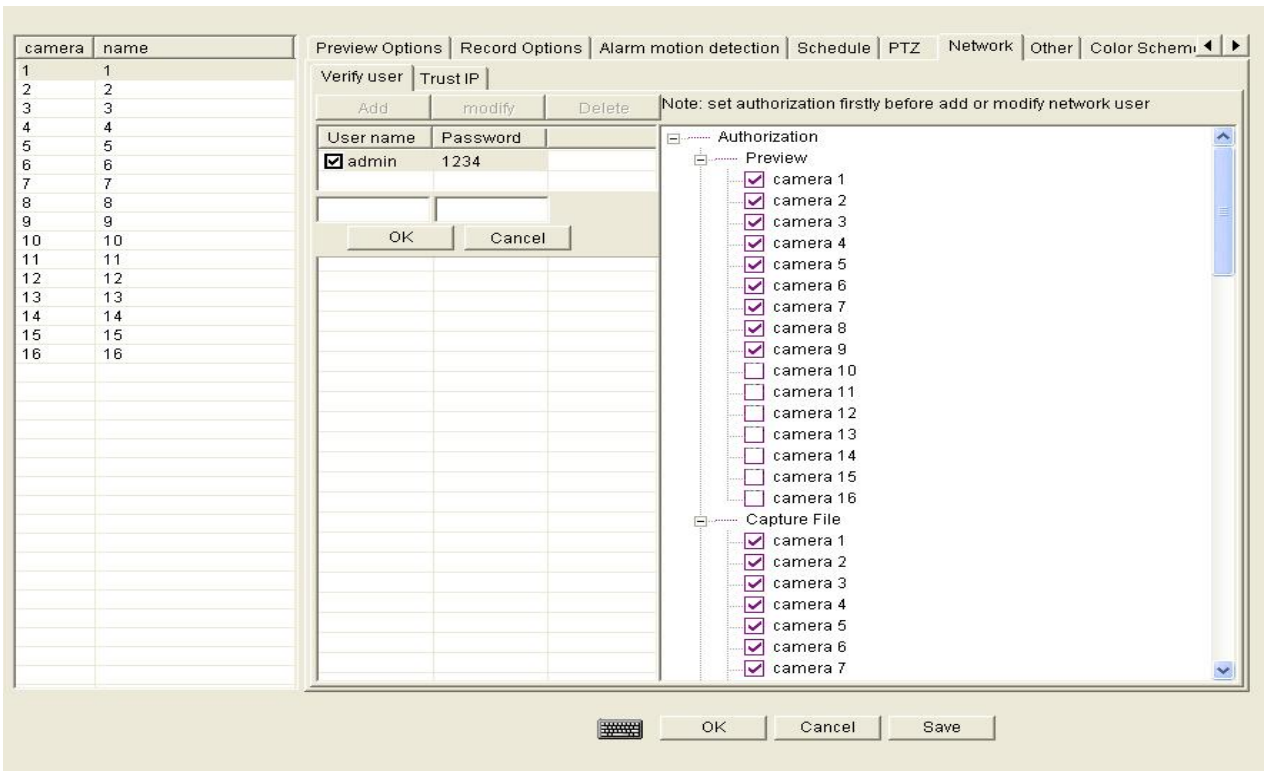
⌨ OK Cancel Save

### 3.3.8 Network



This option is for network user authorization and trusted IP address.

**Trust IP:** user could setup accessing IP address, limit accessing IP address by [add network user][modify IP ] [delete IP], tick the IP address if user don't want to limit the IP



Set the proper authorization first, then add or modify the user.

### 3.3.9 Others

This option includes tools which do not list on the toolbar of system setup.

camera	name
1	1
2	2
3	3
4	4
5	5
6	6
7	7
8	8
9	9
10	10
11	11
12	12
13	13
14	14
15	15
16	16

**Lock system key:** tick it, while running the system, if click on any button of system, it can not work until unlock the system.

**Logon manually:** tick it, while click the "dvr.exe", use has to type user name and password to logon

**Enter windows and auto run:** tick it, and set the right windows OS user and password, the software will auto run after start the PC.

**Auto shut down:** tick it, and type the interval day and time, the system and computer will shut down according to the requested time and date

**Restart computer:** tick it, and type the interval day and time, the system and computer will restart according to the requested time and date.

**Auto run schedule after software started:** auto run schedule after DVR software started.

**Mouse auto lock:** tick it, and set the time, after the selected time, the mouse will auto lock.

**Net trans port:** if user allows other user to remote access this server, must tick it, the default port is 5191.

**Web Server port:** if user allows other user to remote access this server, must tick it, the default port is 80.

**Remark:** *If user the default port, while other user remote access the server, just type the IP address of server, for example: <http://192.168.5.2> . Once user change the default Web Sever port from 80 to 81, then has to type <http://192.168.5.2:81> .*

**FTP server port:** if user allows other user to remote access this server, must tick it, the default port is 21.

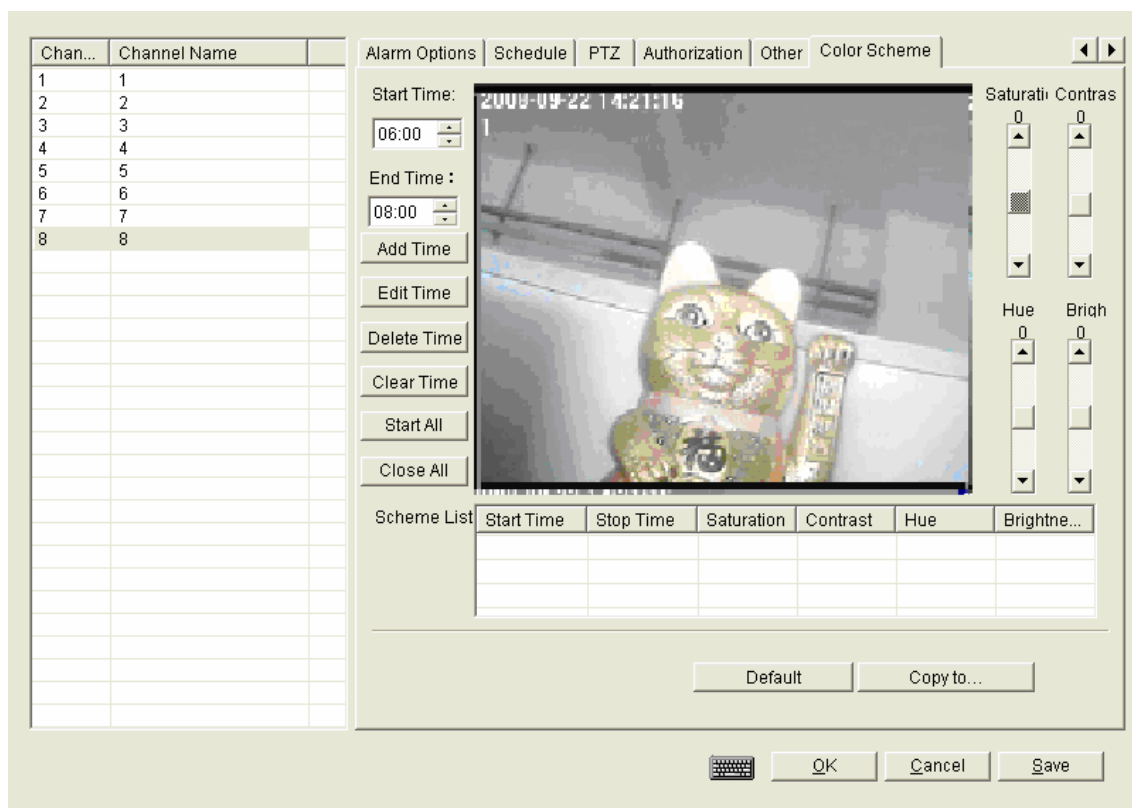
**Push warn dialog when disk full:** tick it, while the disk is nearly full, it will have a warn dialog.

**DDNS:** the secondly domain name in viewnvr.com you applied.

**P2P account:** the p2p account you applied in software.

### 3.3.10 Color Scheme

In some area, because of the big change of the lights, the video quality from camera will change accordingly. To get the better video quality, color scheme is useful.



**Start time:** choose the begin time for the adjusted color

**End time:** choose the finish time for the adjusted color

**Edit time:** make change for above set time

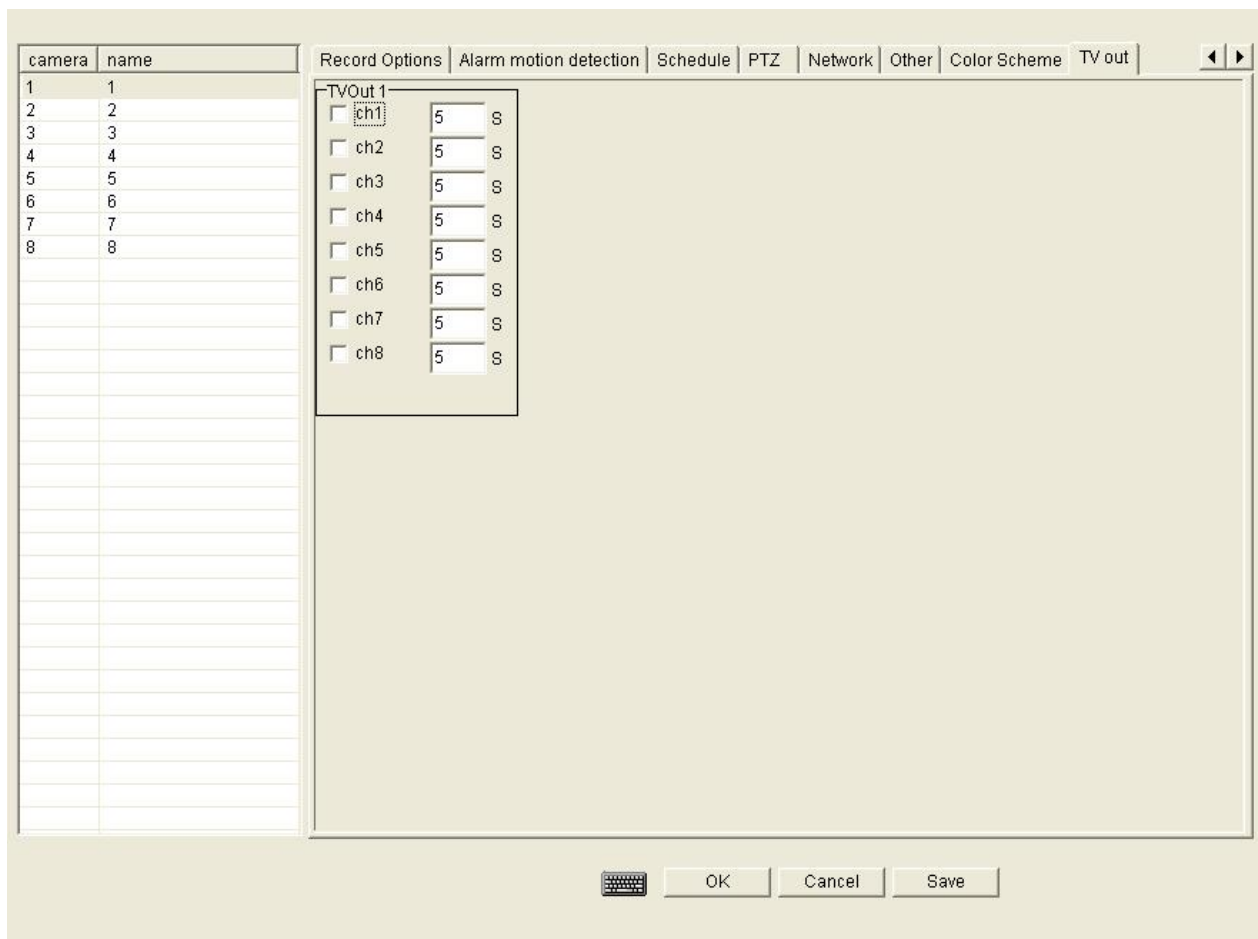
**Delete time:** delete above start or end time

**Clear time:** clear above start, end time

**Start all:** start all the time selected

**Close all:** close all the time selected

### 3.3.11 TVout



Select the channel and set the interval time to TV out.

**Note: the max TV out channel is 16 for each the card.**

## Chapter 4 Playback

Recorded file search and playback is important for surveillance system. This system adopts video and audio synchronization

Press the playback button from the main interface of software, user will get following interface:



**Calendar system:** The different color of date indicate different situation

**2** The number of date is white: No date

**17** The number of date is yellow: has recorded file for video and audio, or pictures information

**23** The number of date is yellow color and with an ellipse: Current date

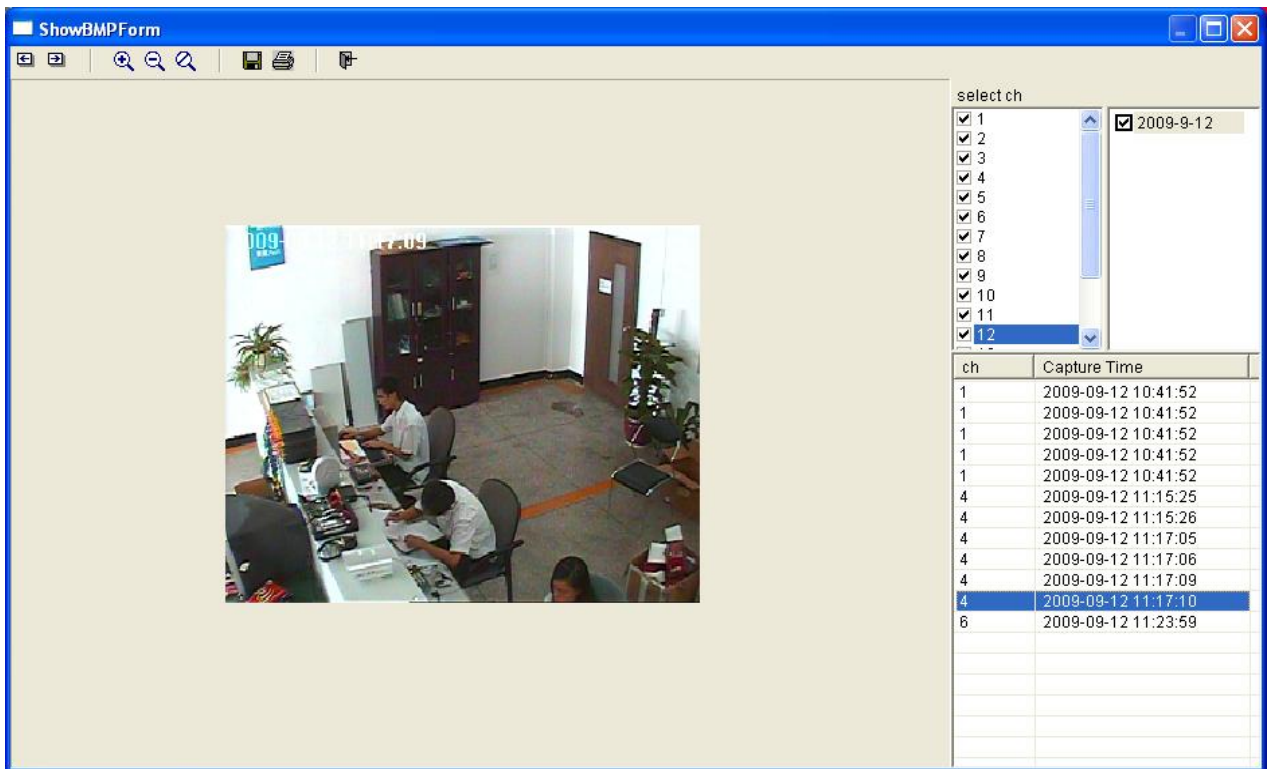
**Minute** : To adjust the playback time. Left button is for minute; right button is for hour.

 : Snapshot picture when playback

**7**  : To adjust volume


**Browse the captured picture:** click  , following window will pop up:





Select the channel that user want to view the captured picture, the corresponding picture will be listed at the right bottom window. Click the picture file and open it, user can zoom in or out the picture, or save it on pc, print it.




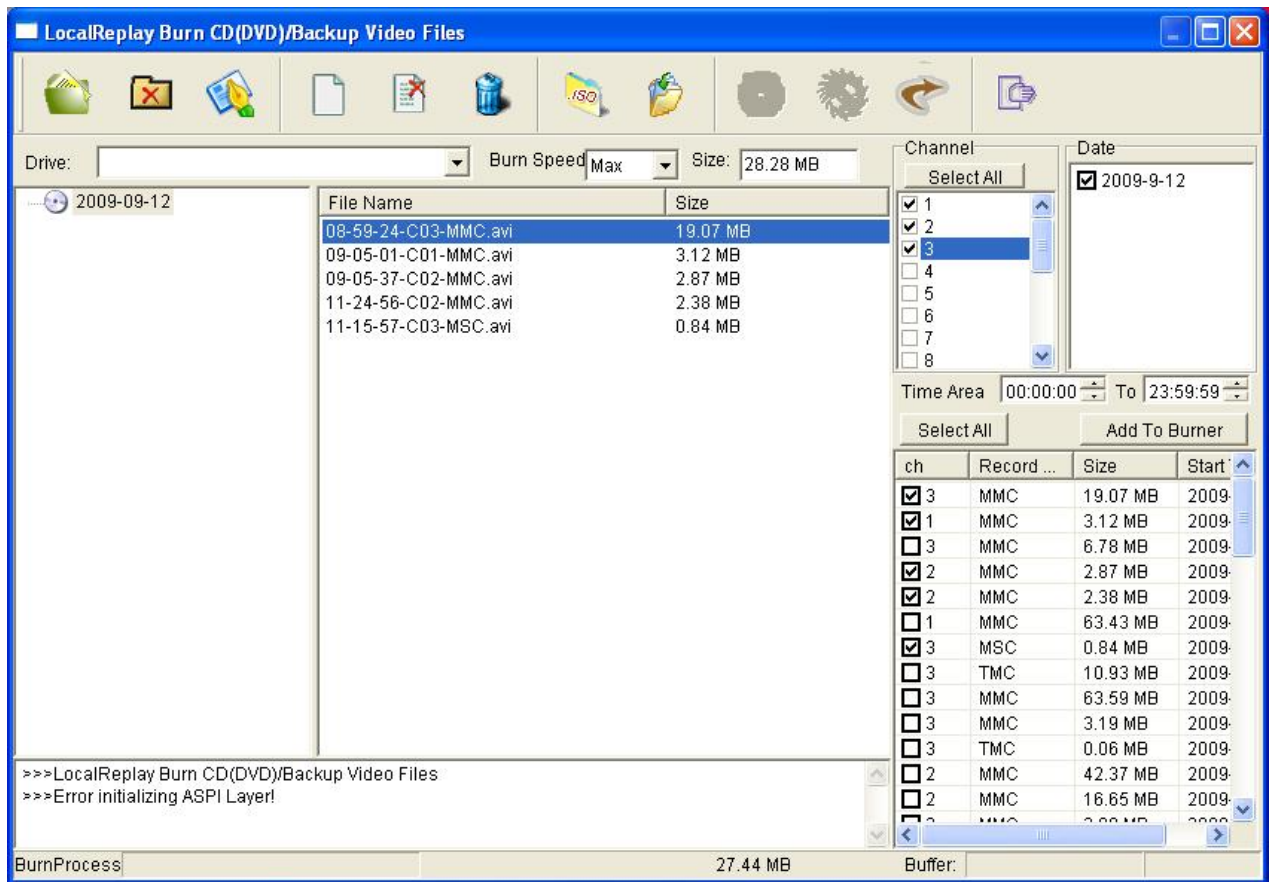
**Mode Switch:** Click on mode switch button(  ), then the playback interface will show as follow:



Here you can open a file to play or backup the recorded file.



**Burn:** click on burn button(  ), then it will show the burn window:



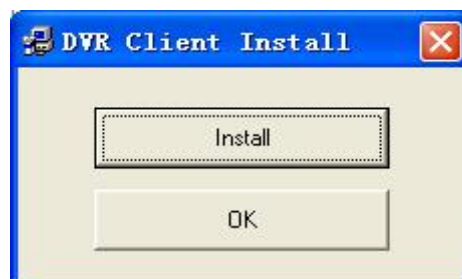
Here you can burn the recorded file to CD.

## Chapter 5: Remote view

### **5.1 Remote view by client software**

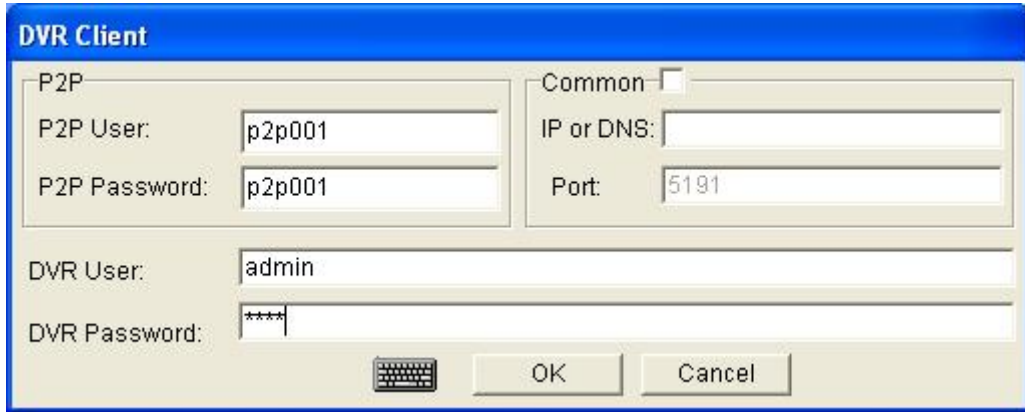
With the client program, user can remote view the live picture from server, and, record, playback the recorded file from server or local PC.

Step 1: Insert the CD into the CD/DVD-ROM, it will pop up the software installation window, select the *Installation client* option, click on Install button to install the client software.





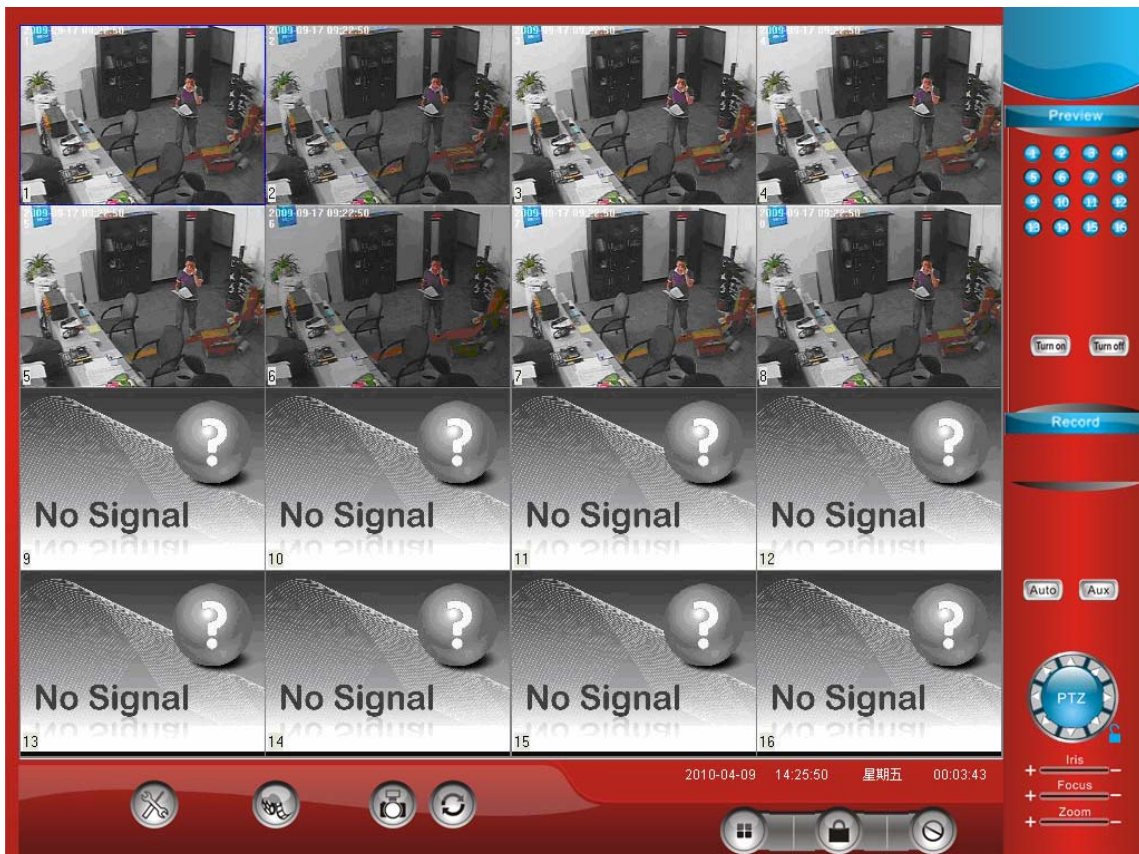
Step 2: Run the dvrclient.exe,



Input the login information to remote view the server.

Here you can choose the p2p account or DNS or IP to remote view.

**Note: If you use the IP or DNS to remote view, it need to forward ports in router (the default ports are 80, 21, 5191). If use the p2p account, you can use the p2p account directly without forward ports in router.**



In remote view interface, click on system setup button, it will pop up the following window:

**SystemSetForm**

Record Options  
 record file splite time: 30 (minute)  
 save record file from disk C to disk Z

login options  
 auto login  open all channel when login succeed

P2P  
 P2P User:  IP or DNS:   
 P2P Password:  Port: 5191

DVR User:  Password:   
 fix port 9151  
 (if can not connect DVR, please fix this port and use p2p connect DVR)

display video method(form left to right,effect decrease,compatible increase)  
 Overlay  DDraw(YUY2)  Ddraw(RGB)  RGB  
 (Note:only change it when can not display video, and needs restart software)

camera	sub	main	camera	sub	main
1	<input checked="" type="radio"/>	<input type="radio"/>	2	<input checked="" type="radio"/>	<input type="radio"/>
3	<input checked="" type="radio"/>	<input type="radio"/>	4	<input checked="" type="radio"/>	<input type="radio"/>
5	<input checked="" type="radio"/>	<input type="radio"/>	6	<input checked="" type="radio"/>	<input type="radio"/>
7	<input checked="" type="radio"/>	<input type="radio"/>	8	<input checked="" type="radio"/>	<input type="radio"/>
9	<input checked="" type="radio"/>	<input type="radio"/>	10	<input checked="" type="radio"/>	<input type="radio"/>
11	<input checked="" type="radio"/>	<input type="radio"/>	12	<input checked="" type="radio"/>	<input type="radio"/>
13	<input checked="" type="radio"/>	<input type="radio"/>	14	<input checked="" type="radio"/>	<input type="radio"/>
15	<input checked="" type="radio"/>	<input type="radio"/>	16	<input checked="" type="radio"/>	<input type="radio"/>
17	<input checked="" type="radio"/>	<input type="radio"/>	18	<input checked="" type="radio"/>	<input type="radio"/>
19	<input checked="" type="radio"/>	<input type="radio"/>	20	<input checked="" type="radio"/>	<input type="radio"/>
21	<input checked="" type="radio"/>	<input type="radio"/>	22	<input checked="" type="radio"/>	<input type="radio"/>
23	<input checked="" type="radio"/>	<input type="radio"/>	24	<input checked="" type="radio"/>	<input type="radio"/>
25	<input checked="" type="radio"/>	<input type="radio"/>	26	<input checked="" type="radio"/>	<input type="radio"/>
27	<input checked="" type="radio"/>	<input type="radio"/>	28	<input checked="" type="radio"/>	<input type="radio"/>
29	<input checked="" type="radio"/>	<input type="radio"/>	30	<input checked="" type="radio"/>	<input type="radio"/>
31	<input checked="" type="radio"/>	<input type="radio"/>	32	<input checked="" type="radio"/>	<input type="radio"/>

all use sub-stream | all use main-stream

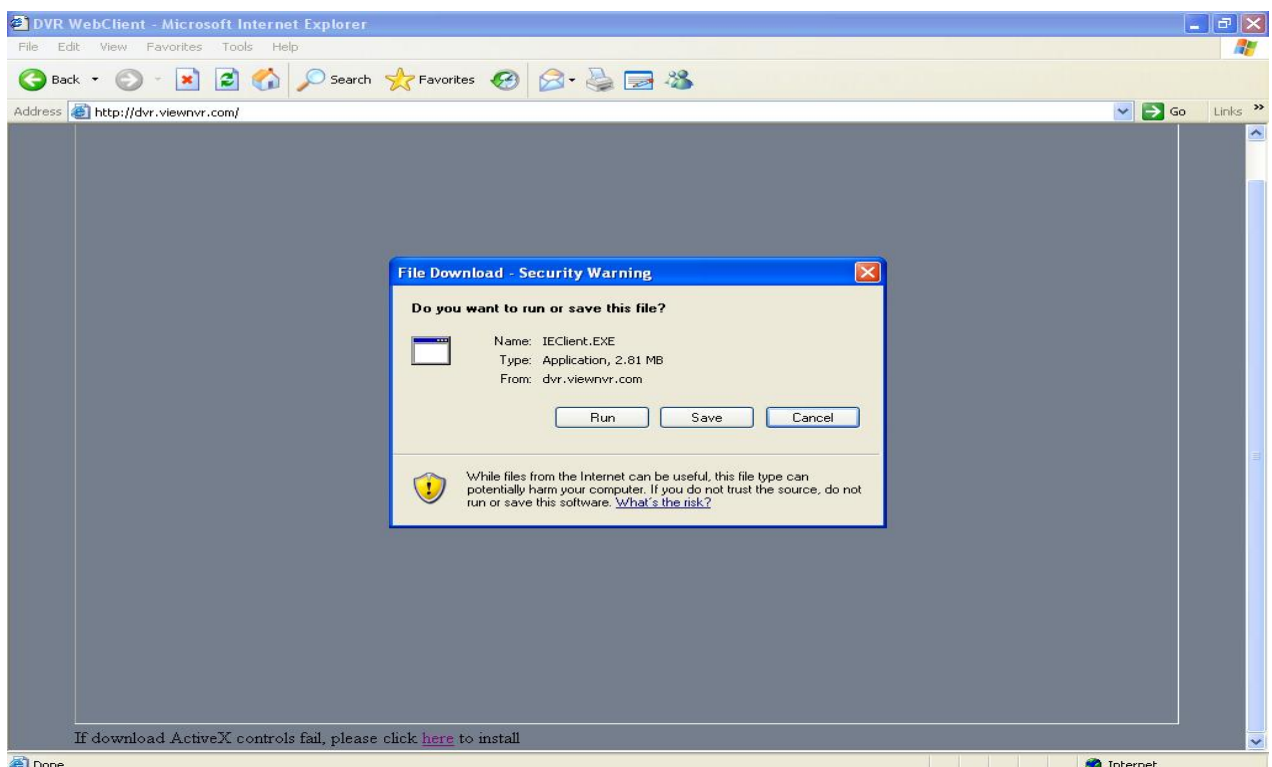
version:4.1.0.0

Here you can choose to use the sub-stream or the main-stream to get a better remote view quality (While using sub-stream, network transmit quality is better; while using main-stream, image quality is better).

## 5.2 Remote view via IE

Step 1: Run an Internet Explorer browser, Enable all the ActiveX controls and plug-ins(Refer to the Appendix 3).

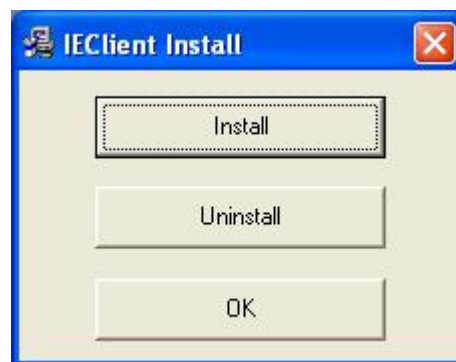
Step 2: Type the IP address or DDNS, drag the right scroll bar to the end, and click the [here](#) to download the ActiveX control.



After downloaded, run it:



Install it:

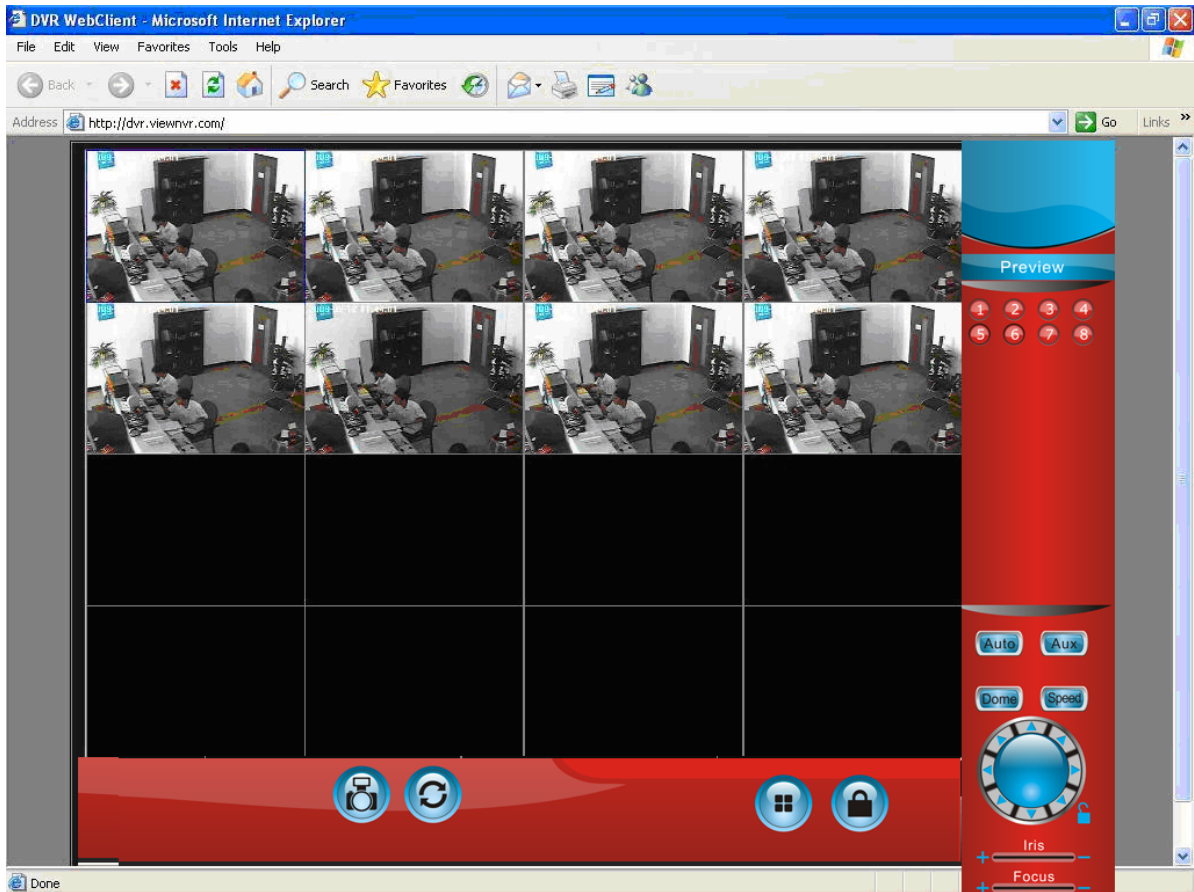


Then it will show install succeed.



Then refresh the IE browser once, and system will pop-up the login window:

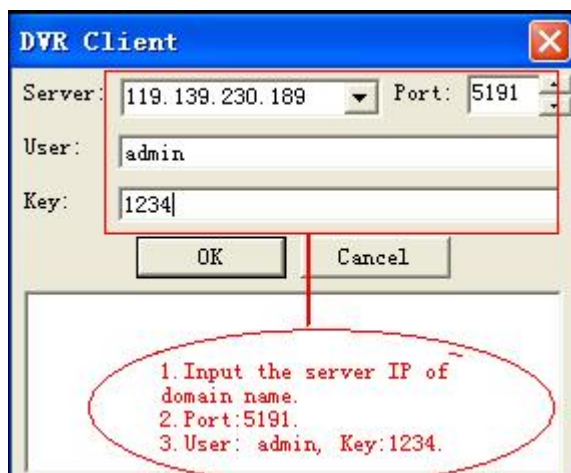
Step 3: Type the IP address or domain name of server, the correct user name and password, the default user name is: **admin**; the default password is: **1234**. Then click "ok", you will get following interface to show that the connecting are successful.



**Note:** IE remote view need to forward ports in router.

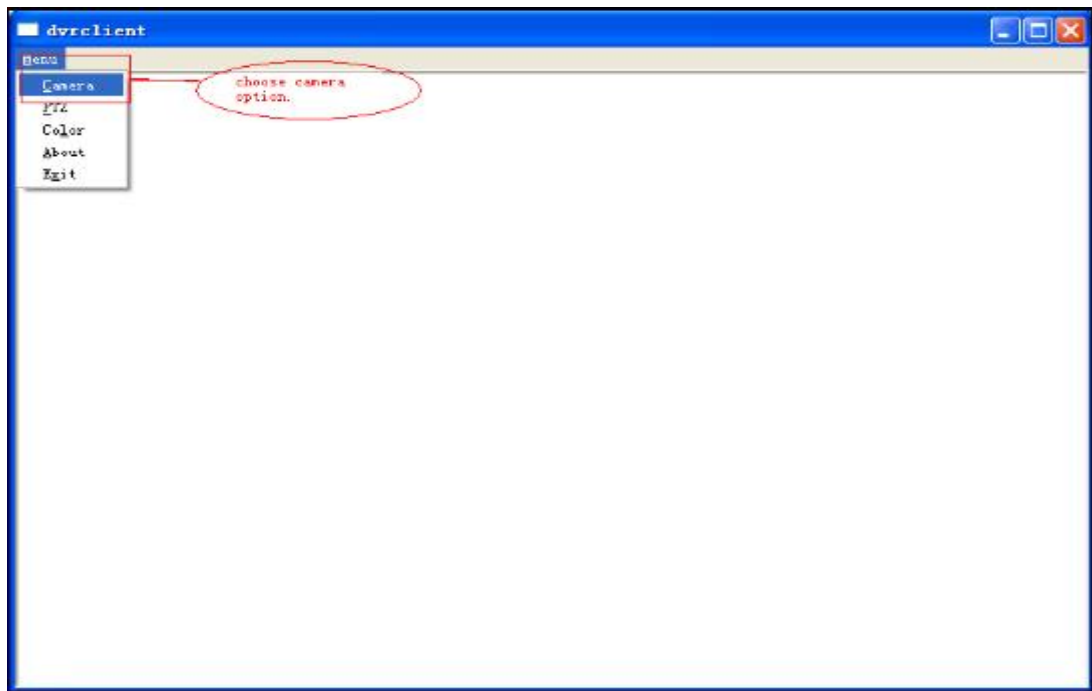
### 5.3 Mobile view

- 1). Copy the client software dvrclient.exe from WinCE folder to your mobile phone.
- 2). Open the client software, and the following window will pop-up, then input your server IP or domain name, and user, key. (Our default port number is 5191) default user and key: **admin, 1234.**

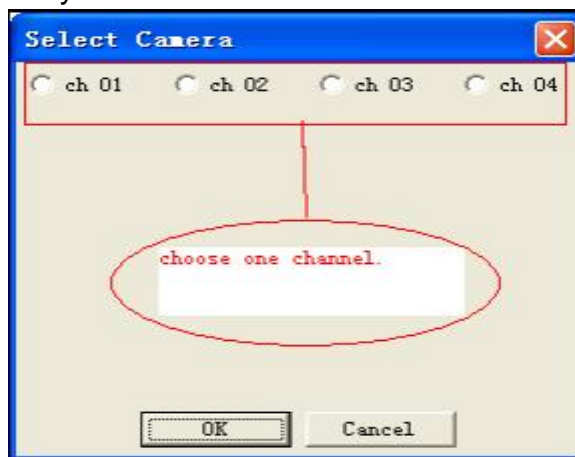


- 3).After successfully login, you will enter into the main window, then choose camera at the menu (menu on the top left corner) and go to channel selection window.





4). Choose the channel that you want to view:

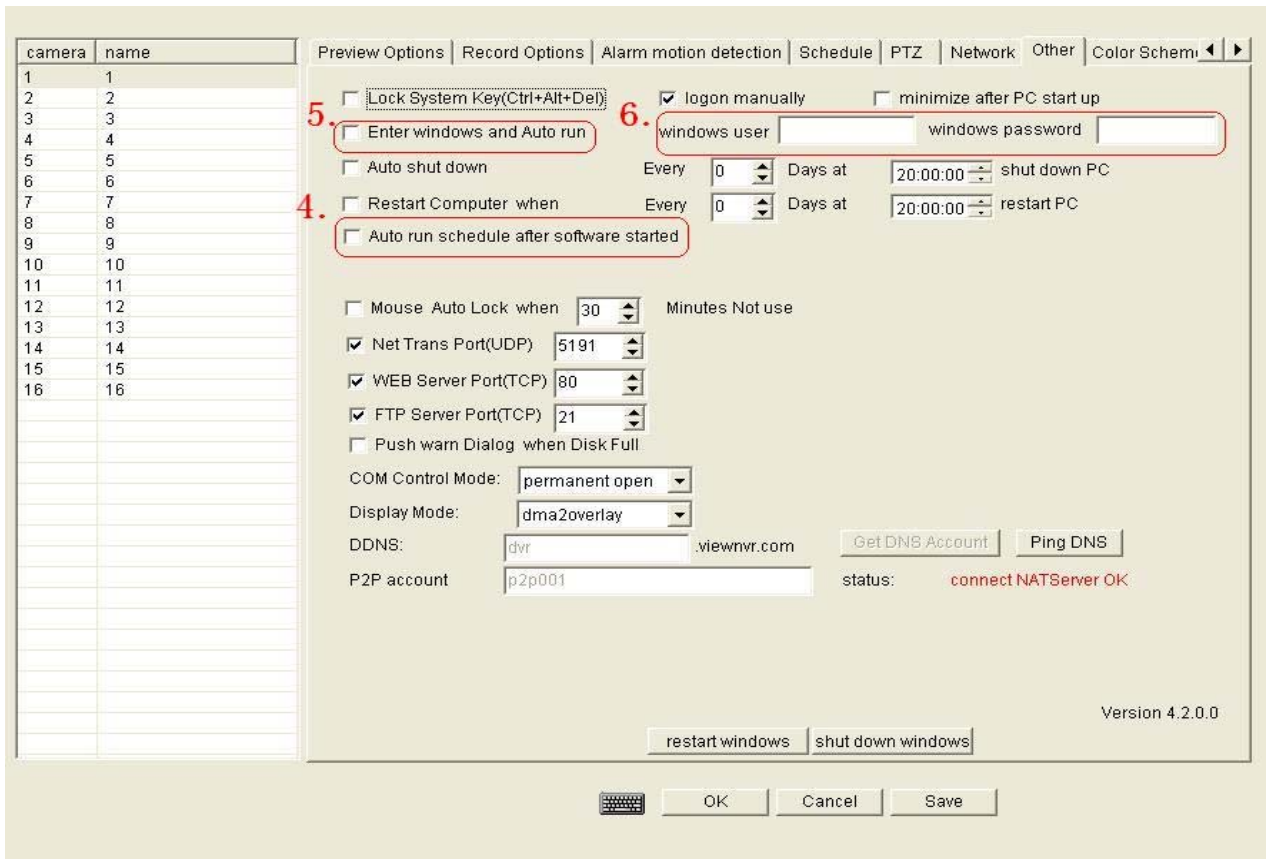


5). Enter into the main surveillance window, show as below:



**Note:** Mobile view need to forward ports in router.  
Mobile view only supports WinCE mobile OS based mobile.





5. Tick **Enter windows and Auto run** option, let it auto login computer's OS, and run DVR software.
  6. Input username and password, and restart PC to check it.
- Note: Here are the windows OS user and password. Please input the right username and password to login window OS.*

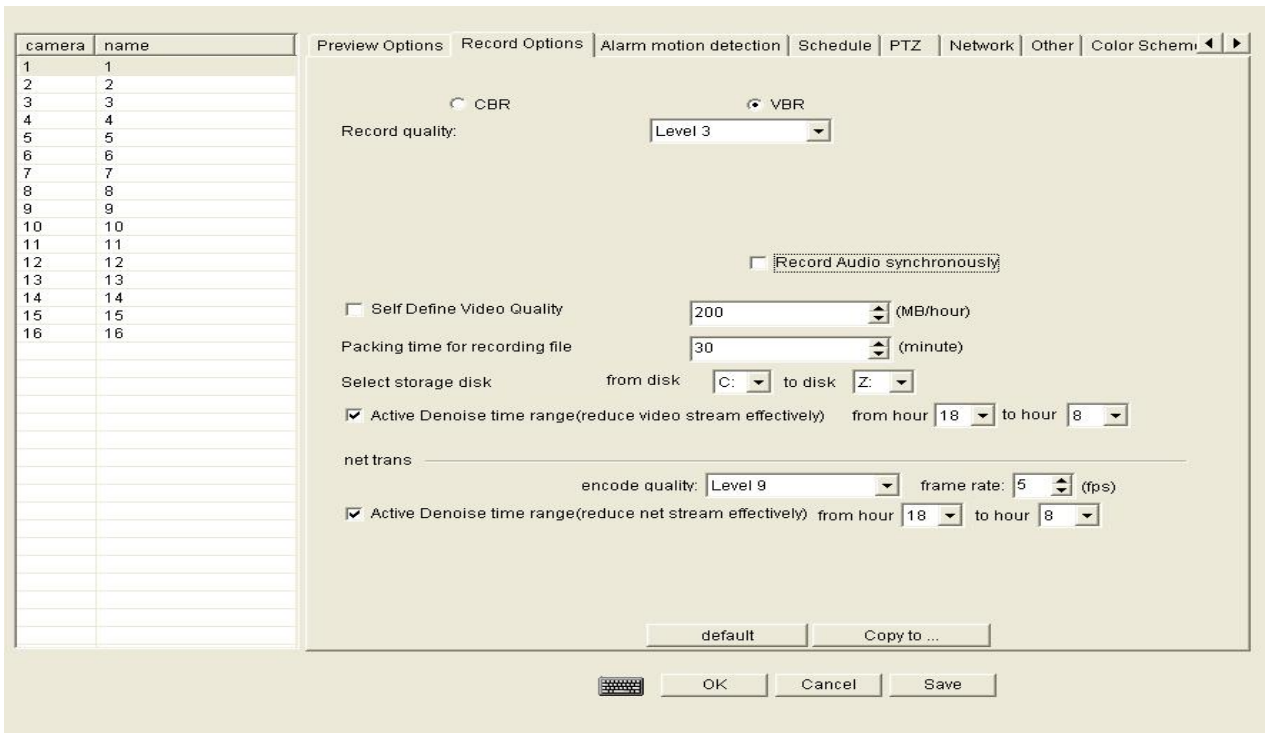
## Appendix 2. Monitor audio and record audio synchronously

1. Monitor the audio in preview interface: Click on the channel's picture, then click on monitor button once, it will become blue, shown as below:



*Note: Make sure you can hear the audio while preview.*

2. Click system setup button, enter into the system setup interface, then choose **Record Options**, select channel name, and tick **Record Audio synchronously** option.



3.Record for a while.

4.Playback and turn on the audio.

5.Then you will hear the audio.

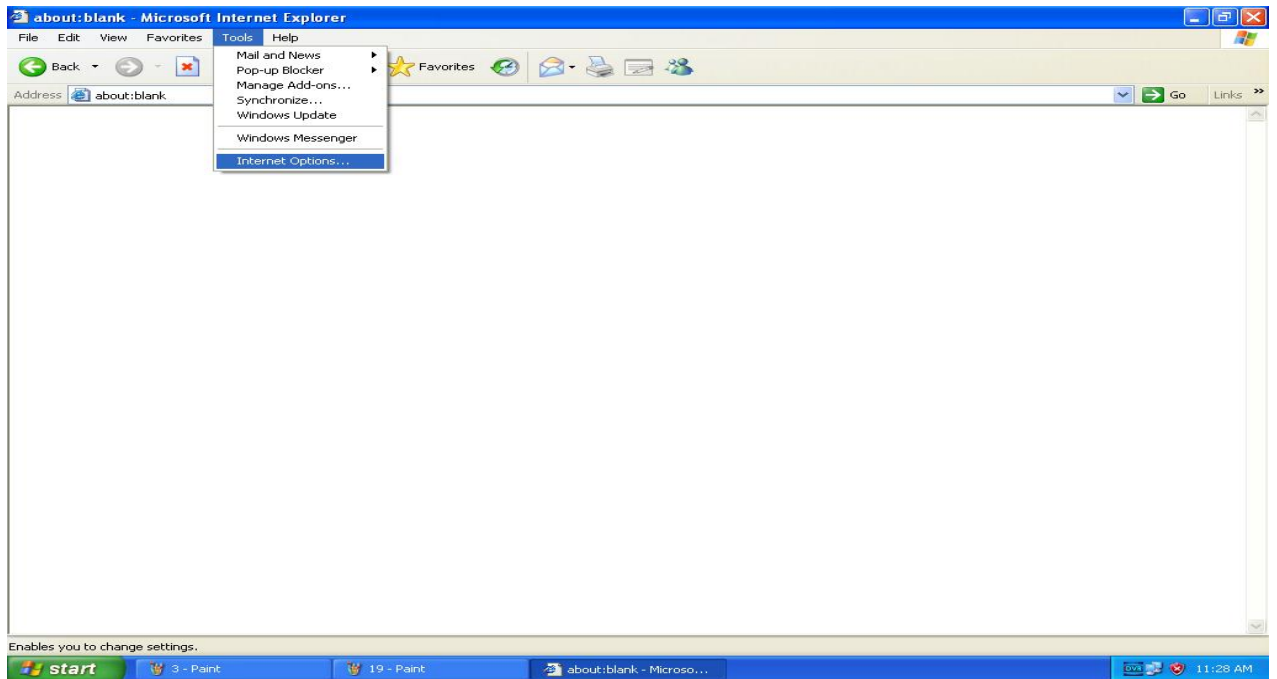
*Notes: Before you do audio function, please make sure the audio adapter can work and connected correctly.*

*One audio input point to one video input.*

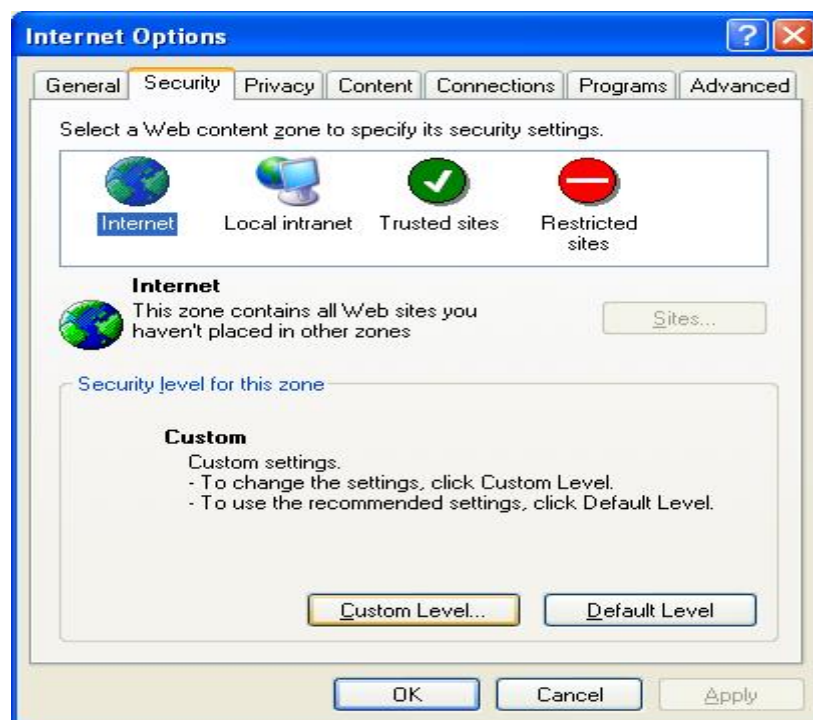
### **Appendix 3. Internet Explorer browser setting**

1. Run an Internet Explorer (IE) browser, click **tool** menu, and select **Internet options...** option:





2. Then it will pop up **Internet options** window:

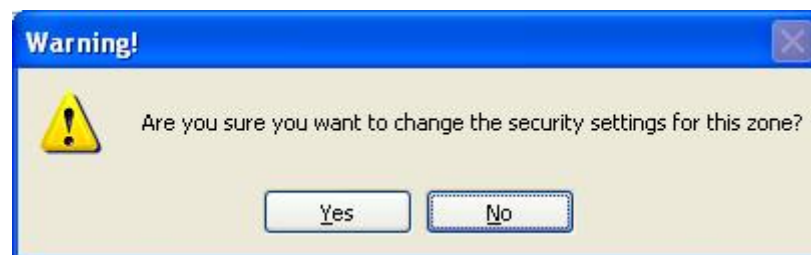


3. Select **Security** option, and click **Internet** icon, and click on **Custom Level...** button, then it will pop up the following setting window:



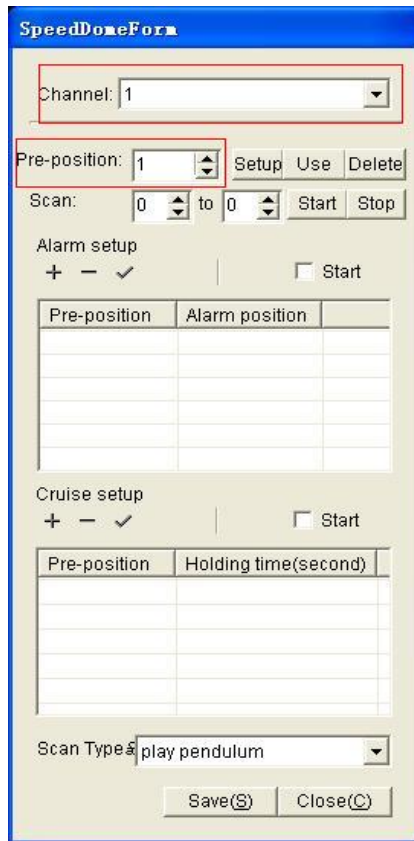
Enable all the **ActiveX** controls and plug-ins here.

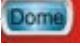
4. Then click **OK** button, and then click **Yes** button to confirm and save the setting.



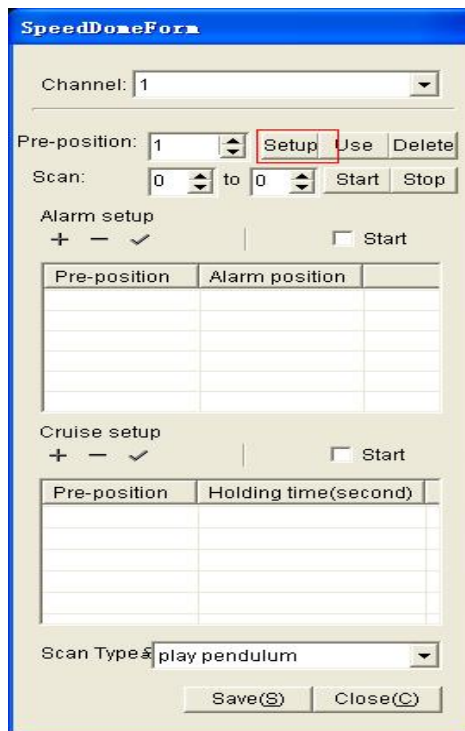
## Appendix 4. Pre-set setting (for high speed dome)

1. After entered into the main interface, you will see a PTZ controller area at the bottom of right corner:




Click on the **dome** button() , pre-set setting window will pop up, shown as on the right above.

2. Choose your channel and pre-position, adjust the camera to the requested direction, then click on **setup** button to set this position to pre-position:

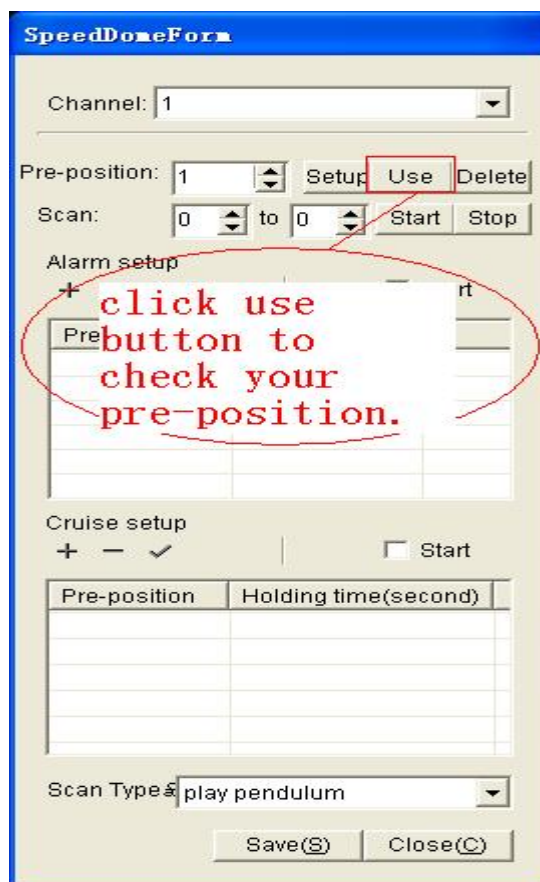


3. After clicked the setup button, it will pop up a prompt dialogue to set a title for this pre-position, like following picture.



4. Enter the name by clicking the up, down, left, right button of the PTZ controller (use up, down buttons to select the number or letter, use left, right buttons to set the direction), and click  button to save.

5. Adjust the camera to other direction, then click “**use**” button to check your setting for pre-position (It will turn to the pre-set 1’s direction).



6. Follow the step 1 to 6 to set other pre-sets.

7. Pre-sets patrol setting:

Click “+” to add the pre-sets to the bottom part of this window, and set the holding time, then click “√” to save the setting.

Then tick **start** option, it will begin to patrol between the pre-sets.

Non-tick **start** option to stop patrol.

*Remark: above information will be changed timely without any notice. If user has any questions and problem, please come back to us timely. We will offer the best service . We will appreciate if you could give us some good suggestions!*