

ACTi Streaming Explorer User's Manual

Ver 2.1.07

2011/01/24



Overview

Streaming Explorer is a Web tool used to manage devices remotely. The Functions provided include **Connection, PTZ, DI/DO, Motion, Camera Settings and Preview.**

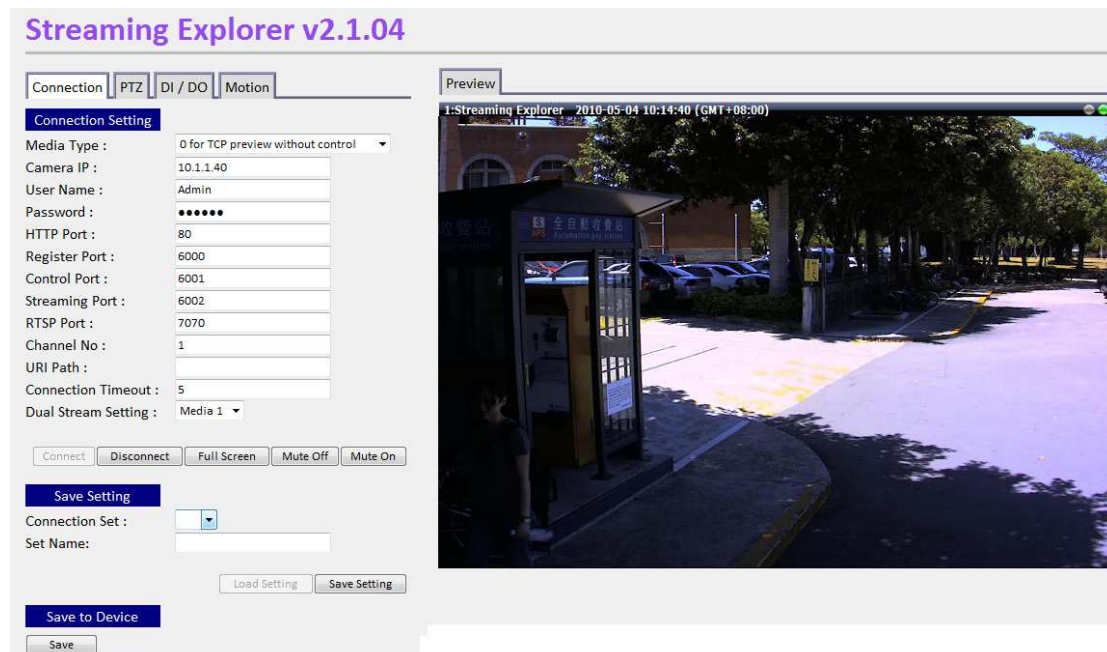


Fig. 1 Streaming Explorer

To use streaming explorer, you should first configure connection settings and connect to the device. Then you can just enable all the other functions, including Preview, PTZ, DIO, Motion and camera setting adjustments.

Note: Not every device supports all the functions. For functions or commands not supported by the particular device, you will not be able to use them.

Installation

Streaming Explorer connects to devices through Internet Explorer. Before using Streaming explorer, be sure to update the ActiveX Control you use by running the **setup.bat** that comes with the file. This batch file will register the proper controls to your system, so that you may access the devices properly.

Connection

This section describes how to connect to your device. Before you successfully connect to the device, only the 'Connect' page will be shown.

Connection setting

The first step is filling up all the fields and connecting to camera/video server.

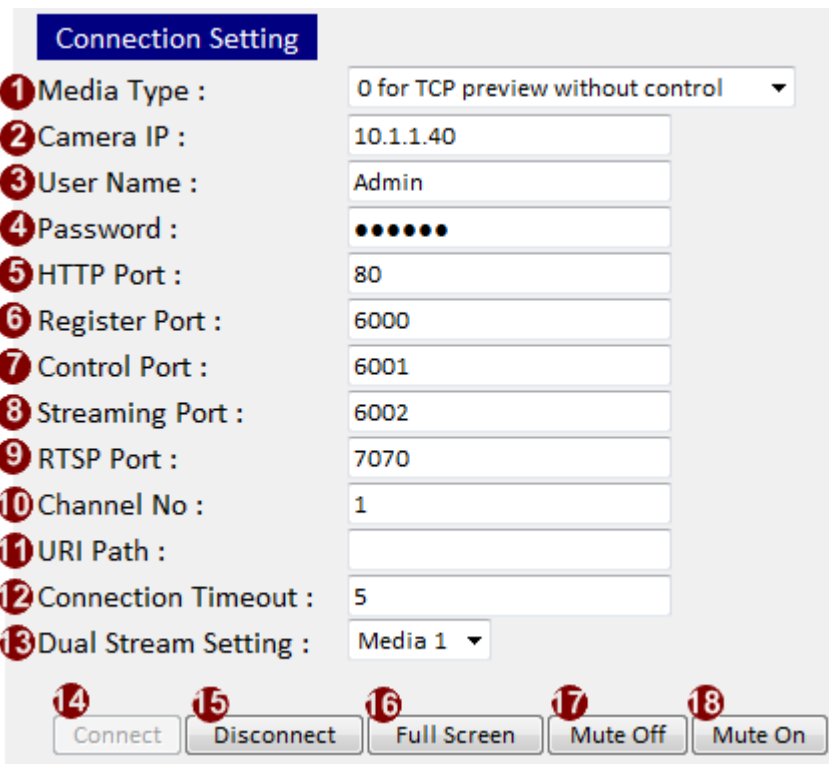


Fig. 2 Connection Setting

1. Media Type: Please select the corresponding media type according to the device.
 - (1) 0 for TCP preview without control (default)
 - (2) 1 for TCP preview with control
 - (3) 7 for RTSP preview with control
 - (4) 8 for HTTP preview with control
 - (5) 10 for HTTP preview without control
 - (6) 12 for RTSP preview without control
2. Camera IP: Enter the IP address of camera/video server. Default value: 192.168.0.100. Please note that domain names are not supported in this field.

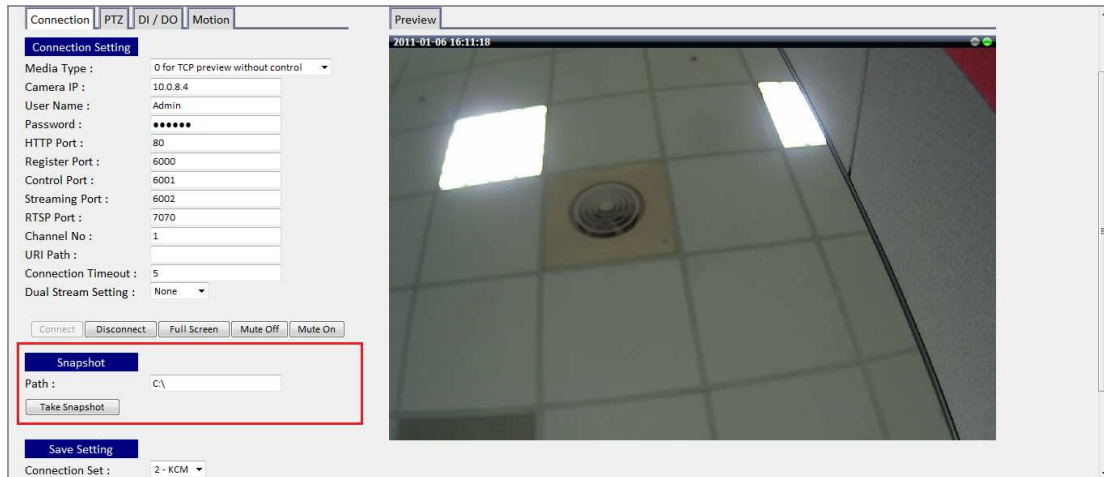
3. User Name: Enter user name to login camera/ video server with. Default value:
Admin
4. Password: Enter password. Default value: **123456**
5. HTTP Port: Enter the HTTP port number of the device. Default value: 80
6. Register Port: Enter the Registration port number of the device. Default value: 6000
7. Control Port: Enter the Control port number of the device. Default value: 6001-
8. Streaming Port: Enter the Streaming port number of the device. Default value: 6002.
9. RTSP Port: Enter the RSTP port number of the device. Default value: 7070
10. Channel No: Enter the channel number on the video server that user wishes to connect. Default value: 1.

Note: If the device supports dual stream and the Dual Stream Setting is none, then you may select which stream to view by changing the channel no between 1 and 2.
11. URI Path: When select media type HTTP or RTSP (media type is 7, 8, 10 or 12), user needs to enter URI Path to communicate with device especially when user uses other than ACTi cameras/video.
(For example:
Complete Path: `http://192.169.0.100/cgi-bin/videoconfiguration.cgi`
URI Path will be: `cgi-bin/videoconfiguration.cgi`)
12. Connection Timeout: Enter the maximum amount of time before connection is considered to have timed out. For example: If we set it to 3 seconds, the maximum timeout value is 3 seconds. Default value: 5 second.
13. Dual Stream Setting: For devices that support dual stream, select Media 1 or 2 to connect to. Default setting is none, which means that the media to connect is determined by the Channel No.

If you select media 1 or media 2 from the drop down list, Channel no. will automatically be set as the stream number, and will be grayed out as read only info.
14. Connect: Click this button to connect to device and start to preview. If user is not currently connected, then "Disconnect", "Full screen", "Mute Off" and "Mute On" BTN's will be disabled
15. Disconnect: Click this button to disconnect with device.
16. Full Screen: Click this button to change preview window to full screen.
17. Mute Off: Click this button to turn the audio on
18. Mute On: Click this button to turn the audio off (It is the default setting of Preview)

Take Snapshot

Once you can connect to the device, you will see Snapshot tab appear and take snapshot for the live video. Fill in the snapshot saving path and click "Take Snapshot" to execute it immediately.



Save Setting

As you can connect to only one device at a time yet may need to switch connection among several cameras, we allow you to save the settings. Next time, when you want to connect again, just load the settings before connecting and you will get all previous settings back, including all connection settings and PTZ configurations.

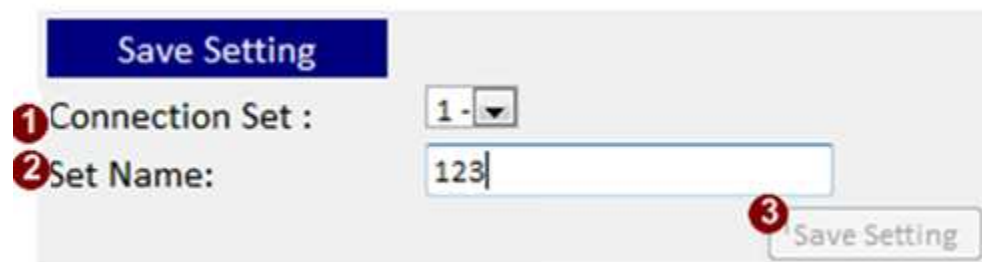


Fig. 3 Save Connection Setting

1. Connection Set: When user wants to save connection settings, select one of three set number to save.
 2. Set Name: Enter the name of the connection
- If the field is left blank when you click 'Save Setting' button, the connection setting will be cleared.
3. Save Setting: Click this button to save setting in the selected connection set.

Save Device

User can save all the settings to device and reboot it by clicking the button shown below.

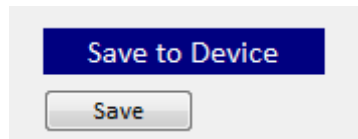


Fig. 4 Save to Device

PTZ

This chapter teaches user how to configure PTZ (Pan/Tilt/Zoom) functions. If the device supports PTZ functions, user has to enable PTZ first. Then all the PTZ functions will be available, such as PTZ Operation, Iris/Focus, OSD, Preset and Tour. After enable it, you will see the figure as below.

Note: User can click “-“at the left of each button to minimize the setting window

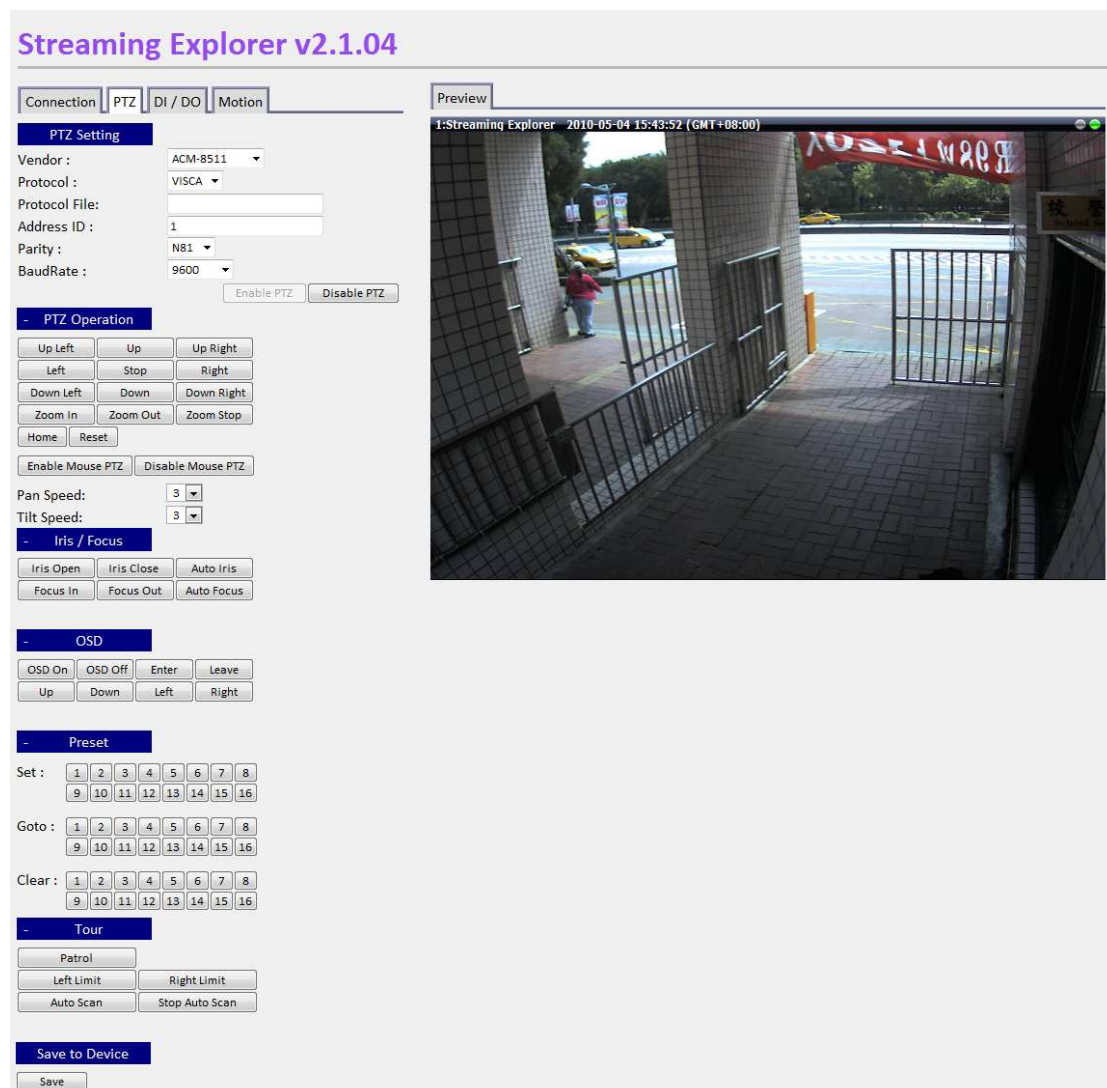
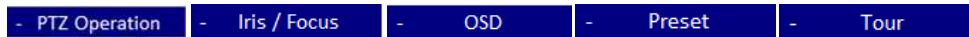


Fig. 5 PTZ Screen

PTZ Setting

To use PTZ function on PTZ devices or speed domes, you need to configure PTZ related settings or select a protocol file and click "Enable PTZ" button to use PTZ function and advanced setting.

After PTZ is enabled, the settings of PTZ Operation, Iris/Focus, OSD, Preset and Tour will be shown as below.

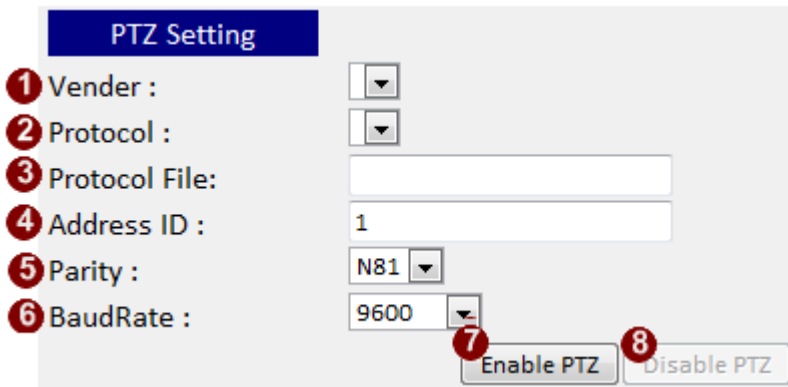


Fig. 6 PTZ Setting

1. Vendor: Select the vendor of PTZ devices or speed dome. Default: ACM-8211
2. Protocol: Select the protocol type of PTZ device/speed dome. Default: VISCA
3. Protocol File: Click on the column to invoke explorer to choose the correct protocol file
4. Address ID: Enter address ID by device setting. Default value:1
5. Parity: Select the type of parity. There three types which are N81 (default value), E81, or O81 in the drop down list. Please check hardware manual for parity setting information.
6. Baud Rate: Select Baud Rate of the device. In the drop down list, Baud Rate can be 1200, 2400, 4800, 9600 (default value), 19200, 38400, 57600, 115200, or 230400. You should consult hardware manual for baud rate setting information.
7. Enable PTZ: click this button to enable PTZ function
8. Disable PTZ: click this button to disable PTZ function

PTZ Operation

This section will teach user how to operate PTZ.

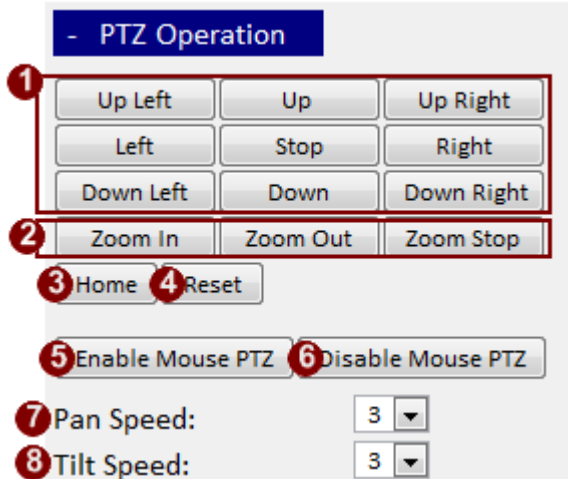


Fig. 7 PTZ Operation

1. Direction: Press button to move in that direction. You may select from Up Left / Up/Up Right / Left /Right / Down Left / Down / Down Right to adjust direction. PTZ devices/speed dome will keep moving after clicking a direction button until users put off the BTN.
2. Zoom: Press "Zoom In" /"Zoom Out" button to zoom in/out.
3. Home: Click this button to return to Home point by device setting.
Note: Not all devices have this function or command.
4. Reset: Click this button to clear all the setting and set to device default setting.
Note: Not all devices have this function or command.
5. Enable Mouse PTZ: Click this button to start using mouse to control PTZ
6. Disable Mouse PTZ: Once clicked, user cannot control PTZ by mouse.
7. Pan speed: Select the speed (1~5) of panning. Default value: 3.
8. Tilt Speed: Select the speed (1~5) of tilting. Default value: 3.

Iris/Focus

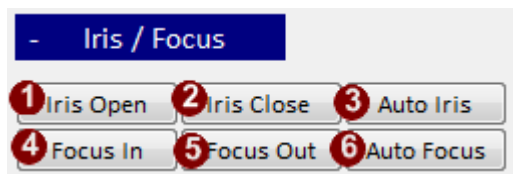


Fig. 8

1. Iris Open: Click this button to open Iris
2. Iris Close: Click this button to close Iris
3. Auto Iris: Click this button to set as automatically adjusted Iris

Note: It will not switch back to manual iris when click again. If user needs to switch back to manual Iris, please use web configurator to change it

4. Focus In: Click this button to sharpen the focus
5. Focus Out: Click this button to loosen the focus
6. Auto Focus: Click this button to set as automatically focusing

Note: It will not switch back to manual focus when clicked again. If user needs to switch back to manual Focus, please use web configurator to change it

OSD

This section teaches users how to operate OSD functions.

Note: Your speed dome must have OSD function to support; Otherwise, you will see nothing after click buttons as below.

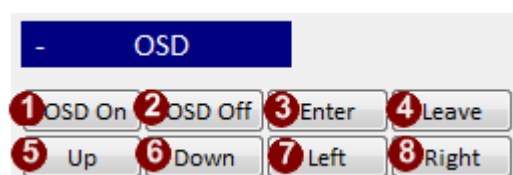


Fig. 9

1. OSD On: Click this button to open OSD menu
2. OSD Off: Click this button to close OSD menu
3. Enter: Click this button to enter function mode to set up
4. Leave: Click this button to leave OSD menu.

Note: Not all devices have this function

5. Up: Click this button to go up in menu
6. Down: Click this button to go down in menu
7. Left: Click this button to select the next option
8. Right: Click this button to select the previous option

Preset

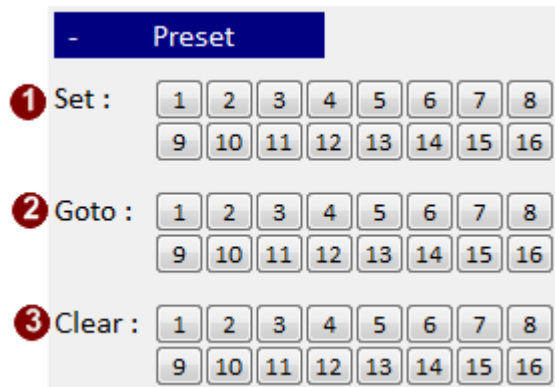


Fig. 10 PTZ Presets

1. Set: Select the number that you want to set preset point and click the corresponding button to save the preset point on the current position
2. Goto: Click the corresponding button of the preset point to go to the defined position.
3. Clear: Click the button to clear preset point.

Tour Setting



Fig. 11 Tour Settings

1. Patrol : Click this button to run preset tour
2. Left Limit: Click this button to set auto scan border
3. Right Limit: Click this button to set auto scan border
4. Auto Scan: Click this button to execute device auto scan function. Please set auto scan borders first before using the function.
5. Stop Auto Scan: Click the button to stop auto scan.

Save to Device

Click the button as figure below to save all settings to device and reboot

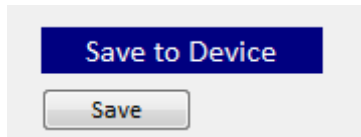


Fig. 12 Save to Device

DI/DO

DI/DO stands for digital input/digital output. External devices can be connected to camera / video server, and notify cameras about an activity in camera site (DI). Or they can be activated by camera upon either an event inside the camera or by the command from the control center (DO), such as panic button (DI) and alarm horn (DO).

This chapter describes how to configure DI/DO

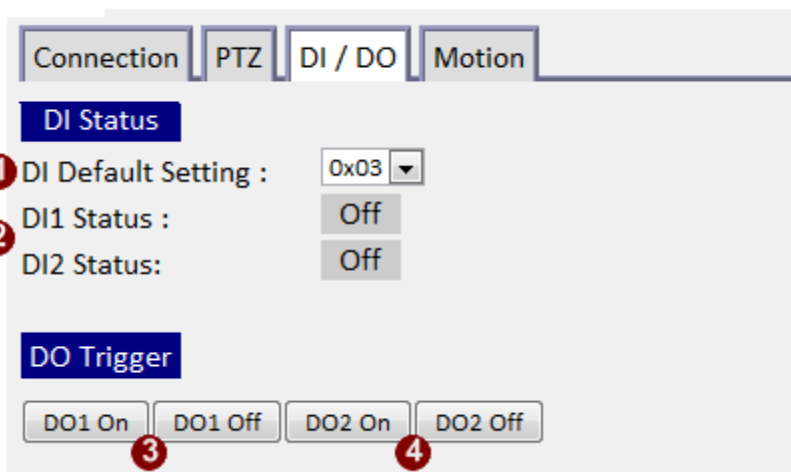


Fig. 13 DI / DO

DI Status

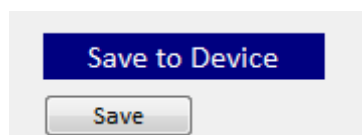
1. DI Default Setting: Select DI setting according to hardware setting of DI. Default value: 0x03 (device remains off, Device will receive DI input.). If the value is set as 0x00, device is by default DI triggered on.
2. DI Status: If DI is trigger, it will show **On** ; Otherwise, it will show **Off**

DO Trigger

3. DO1 On/Off: Click button to set DO1 On/Off
4. DO2 On/Off: Click button to set DO2 On/Off

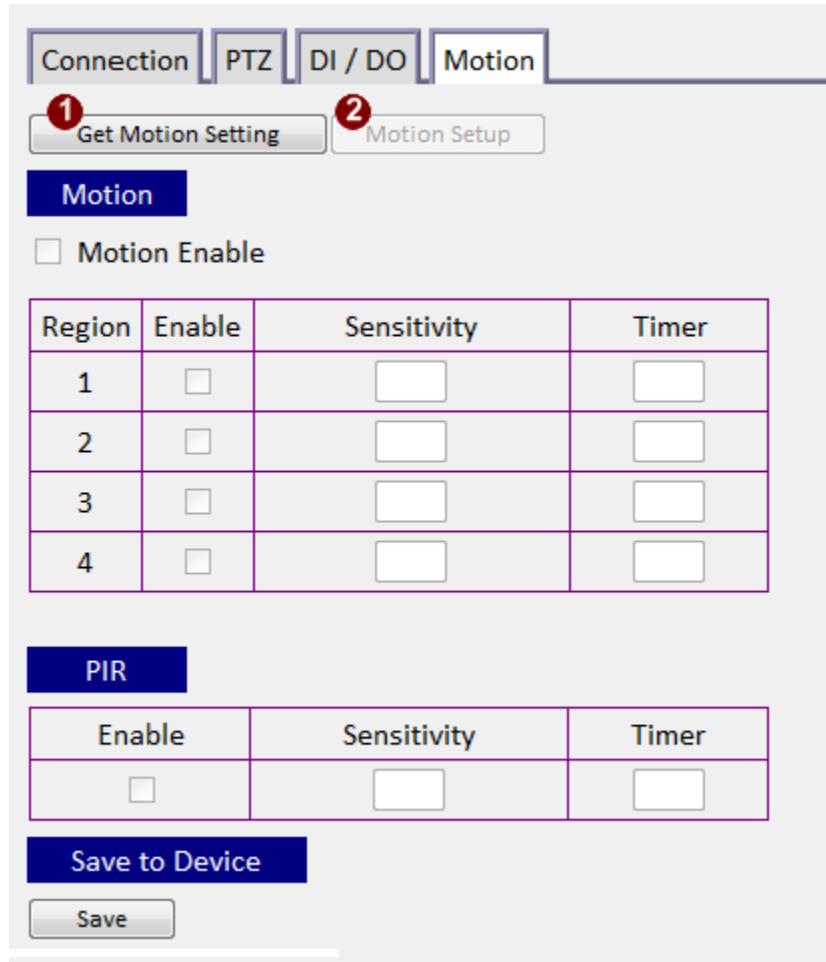
Save to Device

Click the button as figure below to save all settings to device and reboot



Motion Setting

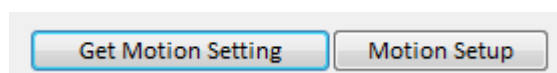
Motion Detection is a useful function. User can set an area to detect motion within the area. This chapter will teach user how to configure.



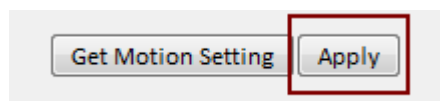
| Region | Enable | Sensitivity | Timer |
|--------|--------------------------|----------------------|----------------------|
| 1 | <input type="checkbox"/> | <input type="text"/> | <input type="text"/> |
| 2 | <input type="checkbox"/> | <input type="text"/> | <input type="text"/> |
| 3 | <input type="checkbox"/> | <input type="text"/> | <input type="text"/> |
| 4 | <input type="checkbox"/> | <input type="text"/> | <input type="text"/> |

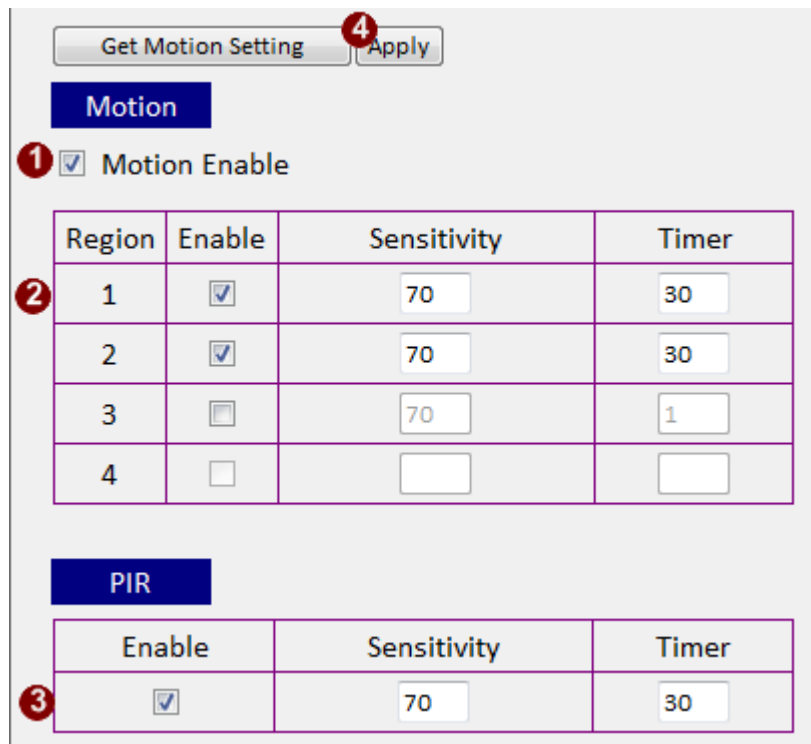
Fig. 14 Motion Setting – Getting motion settings

1. Get Motion Setting: Click this button to read current motion detection setting from device. After clicking this button, the Motion Setup button will appear. User may now see previously configured motion detection regions if there is motion activity.



2. Motion Setup: Click this button to start setting up motion and PIR detection. After Clicking Motion Setup button, it will be replaced by an Apply button. It is used to save modified settings to device. Now, user can start to configure motion and PIR settings.





Get Motion Setting 4 Apply

Motion

1 Motion Enable

| Region | Enable | Sensitivity | Timer |
|---|-------------------------------------|-------------|-------|
| 2 1 | <input checked="" type="checkbox"/> | 70 | 30 |
| 2 | <input checked="" type="checkbox"/> | 70 | 30 |
| 3 | <input type="checkbox"/> | 70 | 1 |
| 4 | <input type="checkbox"/> | | |

PIR

| Enable | Sensitivity | Timer |
|---|-------------|-------|
| 3 <input checked="" type="checkbox"/> | 70 | 30 |

Fig. 15 Setting up motion detection

1. Motion Enable: Click this check box to enable motion detection.
 Note: If user doesn't click it, motion activity will not trigger motion detection even though you may have previous settings memorized.
2. Motion Detection regions 1 – 4 .
 - I. Click the check box and the corresponding region will be enabled.
 - II. Enter Sensitivity value of the motion detection. The higher the value, the more sensitive the detection.
 - III. Enter Timer value of the motion detection. This value is the amount of time before the next motion detection can be triggered.
 - IV. Click and Drag the red rectangle on the preview screen to set up the area that user wish to detect motion in.

NOTE: Most devices provide only three motion detection regions. For these devices the motion detection window number 4 will be disabled.
3. PIR setting:
 - I. Click the check box to enable PIR setting
 - II. Enter Sensitivity value of PIR detection. The higher the value, the more sensitive the PIR detection.

- III. Enter Timer value of the PIR detection. The value is the amount of time before the next PIR can be triggered.

Note: if the device does not support PIR detection, the PIR setting will be disabled.

4. Apply: After finishing Motion and PIR setting, click this button to save settings.

Save to Device

Click the button as figure below to save all settings to device and reboot

