

## USER MANUAL

### 4 OPERATION

The appliance can be operated either by the switches located on the top right hand side of the heater body or by supplied remote control.

Plug the heater into a 10Amp wall socket.

#### MANUAL OPERATION

1. The main power ON/OFF switch in position 0, the heater is OFF.
2. When main power ON/OFF switch is at position I, the heater is ready to use.
3. Press the HEAT button repeatedly to set the heater to desired heat setting. The heater indicator LED will glow which shows the current heater setting.

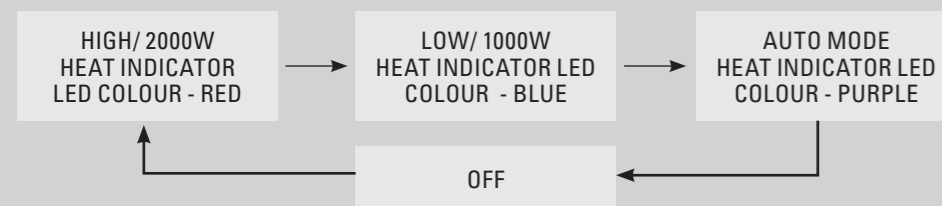
**HEATER INDICATOR LED RED – 2000W HEAT OUTPUT**

**HEATER INDICATOR LED BLUE – 1000W HEAT OUTPUT**

**HEATER INDICATOR LED PURPLE – AUTO MODE**

#### AUTO MODE

Under this mode the heater will automatically turn ON at high heat setting 2000W heat output when the room temperature drops below 22°C. When the room temperature is between 22-25°C the heater output will switch to low heat setting 1000W. When the room temperature goes above 25°C the heater will be turned off and the cycle will continue. The LED indicator will be purple in colour under this mode.



**NOTE:** If operated at the Low heat setting, the heater will not provide as much heat output as in the High heat setting, however the low setting will not require as much electrical power to operate.

To avoid overloading a circuit, do not plug the heater into a circuit that already has other appliances working. When the heater is not in use switch off and unplug.

#### SAFETY CUT-OFF

- This appliance is fitted with a safety cut-off which will operate if the heater overheats (eg. due to blocked air vents). For safety reasons, the heater will NOT automatically reset.
- To reset the appliance, disconnect the appliance from the mains supply for at least 30 minutes. Reconnect the supply to the mains and switch on the appliance.

### 5 REMOTE CONTROL OPERATION



- The **RED** **+5** or **-5** buttons control the brightness of the red flame. **To increase the brightness / flame height,** press and release the **+5** button. Each time you press this button the brightness will increase by a small amount, until the maximum is reached. **To decrease the brightness / flame height,** press and release the **-5** button. Each time you press this button the brightness will decrease by small amount, until the minimum brightness is reached.

- The **BLUE** **+5** or **-5** buttons control the brightness of the blue flame. **To increase the brightness / flame height,** press and release the **+5** button. Each time you press this button the brightness will increase by a small amount, until the maximum is reached. **To decrease the brightness / flame height,** press and release the **-5** button. Each time you press this button the brightness will decrease by small amount, until the

1. For remote to function make sure the heater is plugged-in and mains power switch located on the bottom right hand side is at position I.
2. When operating the remote make sure you point the remote to the centre of the heater unit and make sure each time you press the button the LED indicator located on top right hand corner of the remote blinks. The buzzer inside the unit will beep once; if the LED fails to blink check the batteries. It takes some time for the receiver to respond to the transmitter. Do not PRESS the buttons more than once within two seconds for correct operation
3. Power On “” button: The power-on button at top left corner of the remote is the mains ON/OFF power button. This will turn off all the functions and the heater will be in standby mode.
4. Flame Power On button : This button controls both the amber and blue colour flame. Press this button once to turn ON the flame effect. Once the flame effect is ON use the + and – buttons as explained below to adjust the flame brightness as desired. Press this button again to turn OFF the flame effect.

minimum brightness is reached. You can mix the red and the blue flame to create a realistic flame effect.

5. **HEATER** **Button:** This button is the heater ON/OFF button. Press this button to turn the heater ON. The heater will always start at high heat setting 2000W. To turn OFF the heater press this button again. **HIGH button:** Press the high button to switch the heater to high heat setting 2000W. **LOW button:** Press the high button to switch the heater to LOW heat setting 1000W. **ROOM TEMP button:** Press the high button to switch the heater to AUTO mode. Under this mode the heater will operate in similar way as explained above for the manual operation.

6. To turn OFF the heater unit completely press the “” button once. **Realistic Flame Effect:** The flame effect is controlled by LEDs; the LEDs are non-replaceable type but have been manufactured to last for long life.

### 6 MAINTENANCE & CLEANING

1. Before cleaning, turn off the heater, unplug the power cord and allow the heater to cool.
2. Do not immerse cord, plug or heater into water or other liquid or pour water or other liquid over the heater.
3. Use a vacuum cleaner to remove dust and dirt from air openings.
4. Clean exterior surfaces using a solution of water and mild detergent with wrung out damp sponge. Use and wring out the damp sponge and wipe the exterior surface again. Finally wipe with a dry cloth. Allow sufficient time to dry before plugging electrical cord into outlet.
5. The tempered glass front panel can be clean with glass cleaner detergents.
6. Any other servicing should be performed by an authorised service representative. Do not use the heater if it has malfunctioned or become damaged in any way.

#### WARRANTY

Arlec guarantees this product in accordance with the Australian Consumer Law.

Arlec also warrants to the original first purchaser of this product (“you”) from a retailer that this product will be free of defects in materials and workmanship for a period of 12 months from the date of purchase; provided the product is not used other than for the purpose, or in a manner not within the scope of the recommendations and limitations, specified by Arlec, is new and not damaged at the time of purchase, has not been subjected to abuse, misuse, neglect or damage, has not been modified or repaired without the approval of Arlec and has not been used for commercial purposes (“Warranty”).

If you wish to claim on the Warranty, you must, at your own expense, return the product, and provide proof of original purchase and your name, address and telephone number, to Arlec at the address below or the retailer from whom you originally purchased the product within 12 months from the date of purchase.

Arlec will (or authorise the retailer to) assess any claim you may make on the Warranty in the above manner and if, in Arlec’s reasonable opinion, the Warranty applies, Arlec will at its own option and expense (or authorise the retailer to) replace the product with the same or similar product or repair the product and return it to you or refund the price you paid for the product. Arlec will bear its own expenses of doing those things, and you must bear any other expenses of claiming on the Warranty.

The Warranty is in addition to other rights and remedies you may have under a law in relation to the product to which the Warranty relates.

Our goods come with guarantees that cannot be excluded under the Australian Consumer Law. You are entitled to a replacement or refund for a major failure and for compensation for any other reasonably foreseeable loss or damage. You are also entitled to have the goods repaired or replaced if the goods fail to be of acceptable quality and the failure does not amount to a major failure.

#### TECHNICAL SPECIFICATIONS

|                     |                              |
|---------------------|------------------------------|
| Model               | EFH422                       |
| Max heater Power    | 2000W max                    |
| Rated Frequency     | 50Hz                         |
| Rated Voltage       | 220-240Vac                   |
| Flame Effect Lights | LED (Non-Replaceable Lights) |

## ARLEC

For all Sales & Warranty enquiries

Arlec Australia Pty. Ltd. ACN 009 322 105 (“Arlec”) gives the Warranty.

Building 3,31 – 41 Joseph Street, Blackburn North, Victoria, 3130

Blackburn North LPO, P.O. Box 1065, Blackburn North, 3130

Customer Service: (03) 9982 5111

New Zealand Toll Free: 0800 003 329

Email: [custservice@arlec.com.au](mailto:custservice@arlec.com.au)

CPIN002614/2

# ARLEC

2000W  
FIREPLACE HEATER  
WALL MOUNTABLE WITH FLAT TEMPERED GLASS PANEL



## USER MANUAL

FOR PERSONAL INDOOR USE ONLY

Magnus

EFH422

**WARNING!**

**TO REDUCE THE RISK OF FIRE, ELECTRIC SHOCK, OR PERSONAL INJURY, READ, UNDERSTAND AND FOLLOW INSTRUCTIONS BEFORE USING THIS HEATER**

KEEP THIS MANUAL IN A SAFE PLACE FOR FUTURE REFERENCE

## IMPORTANT SAFEGUARDS

• Please retain all packaging until you have checked and counted all the parts and the contents of the fixing pack against the parts list.

### Read all instructions before using this heater.

- This heater is hot when in use. To avoid burns, do not let bare skin touch hot surfaces. Keep combustible material such as drapery and other furnishings, at least 1 metre from the heater. When in use keep the mains cord of the heater from touching the heater body. Do not drape the cord over the heater while hot. Extreme caution is necessary when any heater is used by or near children or invalids and whenever the heater is left operating unattended.
- Always unplug heater when not in use.
- Do not operate any heater with a damaged cord or plug or after the heater malfunctions, has been dropped or damaged in any manner. Return heater to suitably qualified facility for examination, electrical or mechanical adjustment or repair.
- Do not use outdoors, the product is designed only for household use.
- Never locate heater where it may fall into a bathtub or other water container.
- Do not run cord under carpeting. Do not cover cord with throw rugs runners, or the like. Keep cord away from traffic areas to avoid tripping over.
- To disconnect heater, turn controls to off, then remove plug from outlet.
- Connect to properly earthed socket-outlet of the appropriate voltage.
- Do not insert or allow foreign objects to enter any ventilation or exhaust opening as this may cause an electric shock or fire, or damage the heater.
- To prevent a possible fire, do not block the grilles in any manner.
- Do not use in areas where petrol, paint, or flammable liquids are used or stored.
- Use the heater only as described in this manual. Any other use not recommended by the manufacturer may cause fire, electric shock, or injury.
- Do not connect via double adapters or power boards. Avoid the use of an extension cord because the extension cord may overheat and cause risk of fire. However, if this heater is used with an extension cord, use as short a cord as practical.

- Do not use this appliance with a programmable timer or any other device that switches the heater on automatically, since a fire risk exists if the appliance is covered or positioned incorrectly.
- In order to avoid overheating, do not cover the heater.
- To eliminate a choking hazard for young children, remove and safely discard the protective cover fitted to the power plug of this heater along with all packaging material and promotional labels.
- Fully unwind the cord before first time use
- There are no user serviceable parts in this heater; any maintenance other than cleaning should be performed by an authorised service representative.
- The installation of a residual current device (safety switch) is recommended to provide additional safety protection using electrical appliances. It is advisable that a safety switch with a rated residual operating current not exceeding 30mA be installed in the electrical circuit supplying power to the appliance. See your electrician for professional advice.
- Keep these instructions handy for future reference.

## WARNING

**This heater is for wall mounting only, not to be used as free standing.**

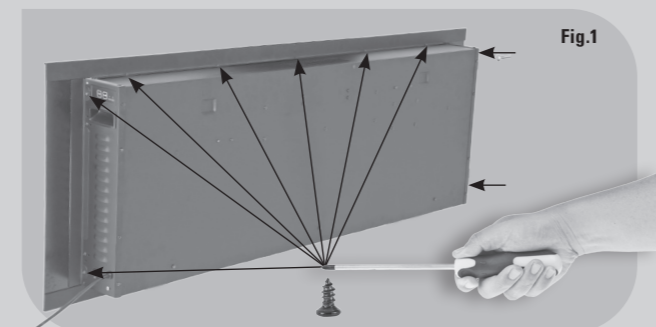
This appliance is not intended for use by persons (including children) with reduced physical, sensory or mental capabilities, or lack of experience and knowledge unless they have been given supervision or instructions concerning the use of the appliance by a person responsible for their safety

Young Children should be supervised to ensure that they do not play with the appliance. The heater must not be located immediately below or in front of a power outlet. Do not use this heater in the immediate surroundings of a bath, shower or swimming pool.

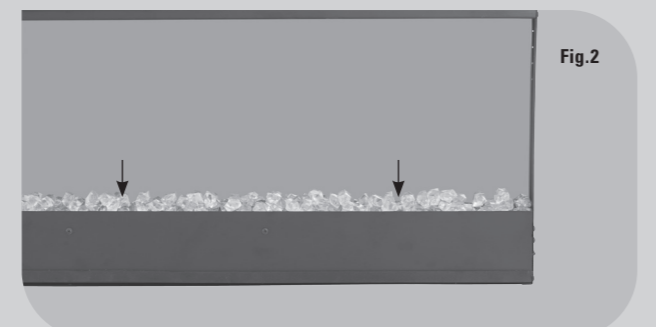
## USER MANUAL

### 1 INSTALLATION

- Do not operate the appliance until properly fixed to the wall and the instruction manual is read fully.
- Two people are recommended for installation of this electric fireplace heater.
- Peel off the removable label and the protective sheet attached to the front tempered glass.
- To place the decorative pebbles and crystals follow the steps as given below
  - To place the pebbles and crystals, the front glass is required to be removed from the heater panel body. Unscrew the top screws which hold the glass as shown below. Fig.1



- Once the screws are out the top metal bracket will come loose, place the bracket away. Make sure the glass is supported while doing this. Lift the glass up and out from the heater body.
- Place the crystals and pebbles along the light unit in desired position. Fig.2

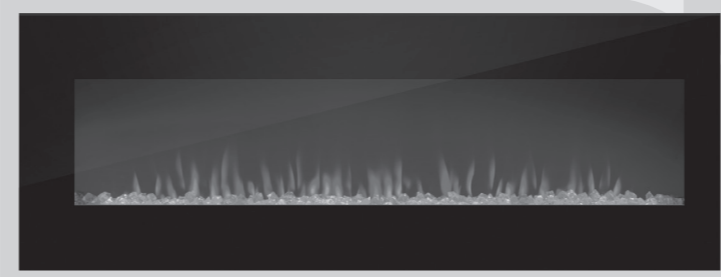


- Put the front glass back and place the metal bracket on top of the glass so that the bracket secures it. Put the fasten screws back. Make sure the screws are tight and the glass is secured before continuing with the installation.

# ARLEC Magnus

## 2000W FIREPLACE HEATER

### WALL MOUNTABLE WITH FLAT TEMPERED GLASS PANEL



### HELPFUL ADVICE BEFORE FITTING

- Please retain all packaging until you have checked and counted all the parts and the contents of the fixing pack against the parts list.
- The fixing pack contains small items which should be kept away from young children.
- We suggest that you open the fixing pack and place all the contents into a container, therefore reducing the risk of losing any small pieces.

### CONTENTS

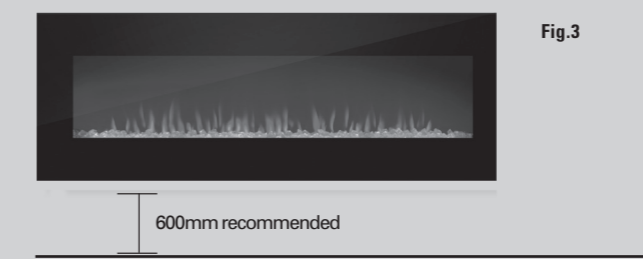
- Heater • Wall fixing bracket • Fixing screws and wall plugs
- Remote control • 1 Instruction Manual

### BEFORE FIRST USE

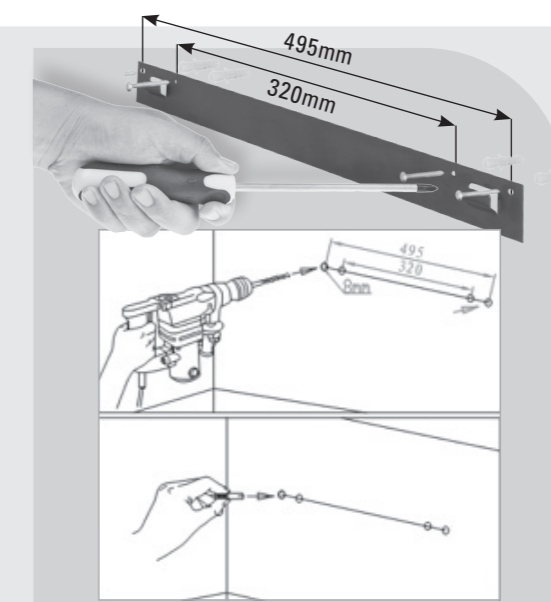
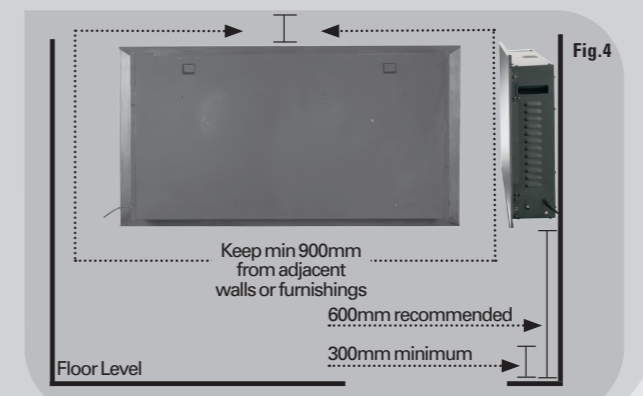
Remove any promotional material any packaging from the heater. Unwind the cord to its full length and place the heater on a firm level surface in a stable, upright position. Visually inspect the air inlets and outlets to ensure that there are no blockages. To avoid overheating do a circuit do not plug the heater into a circuit that already has other appliance working.

**CAUTION: There may be some odour coming from the heater for the very first time you use it. This is normal during the break-in period or after long term storage. Make sure the heater is in well ventilated area and continue running it until the smell goes away.**

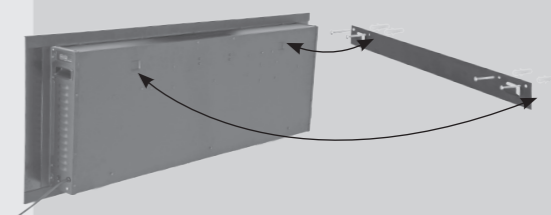
- The minimum distances must be observed as shown in the figure below.
- For installation of the appliance, care must be taken not to damage concealed cables. Please be careful while drilling the holes.
- This appliance is designed to be permanently fixed to a wall at a minimum height of 300mm. The wall bracket must be fitted horizontally and the cable routed to the bottom right of the heater.
- A height of 600mm from bottom of heater to floor is recommended for optimum viewing of fuel bed. See the figure 3 below for the recommended fixing dimensions.



- Take into consideration the minimum clearance requirements as shown below and choose a position for the heater. Mark the wall mounting bracket mounting holes and drill holes. Fix the wall bracket using the plug and screws provided. See figure 4

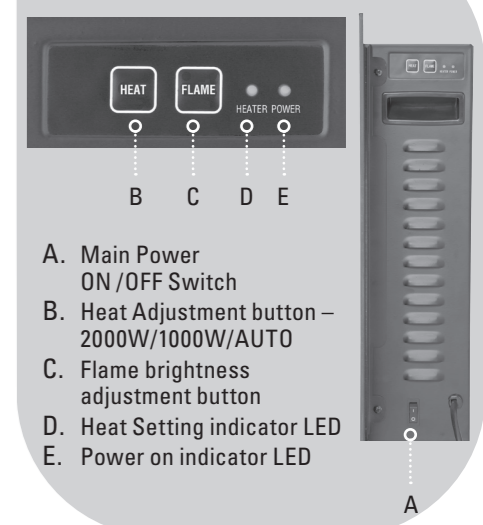


- Carefully lift the heater up ensuring that the top rear edge of heater engages the wall bracket and is sitting centrally. Two people will make this operation easier



- Gently bring the heater level with the wall and hang the heater to the heater bracket. Ensure the heater body is locked in with the wall bracket.
- Attach the bottom bracket to the heater panel body and mark the mounting hole; remove the heater.
- Drill the bracket mounting hole and fit the wall plug.
- Refit the heater to the wall and secure the bottom bracket using the screws provided to permanently fix the heater in place. Ensure the heater body is engaged with the wall bracket at the top. The heater is now ready for use.

### 2 POWER CONTROL PANEL



- A. Main Power ON/OFF Switch
- B. Heat Adjustment button – 2000W/1000W/AUTO
- C. Flame brightness adjustment button
- D. Heat Setting indicator LED
- E. Power on indicator LED

### 3 REMOTE CONTROL

- Slide the rear battery cover from the remote and fit 2 x AAA size batteries, alkaline recommended.
- Refit rear cover.

