

User Manual for Connect2NSE Utilities



**NSEIL
EXCHANGE PLAZA,
C-1, BLOCK G,
BANDRA KURLA COMPLEX
BANDRA (E)
MUMBAI 400 051**

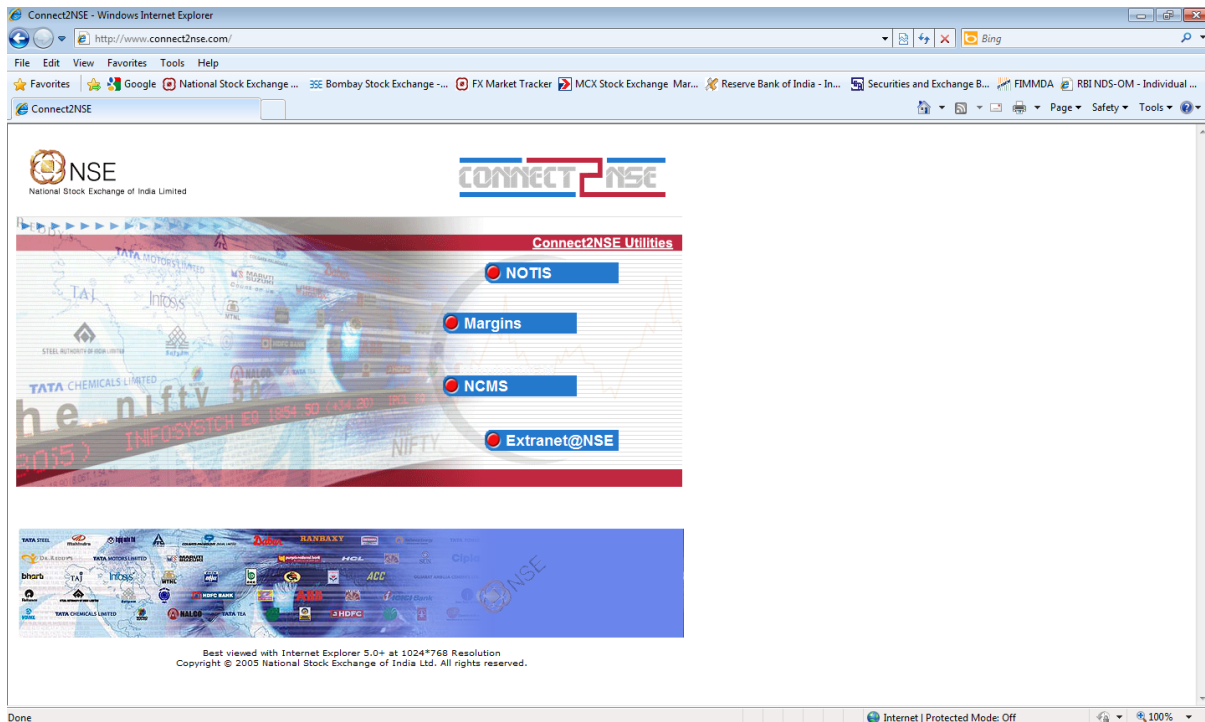
User Manual for Connect2NSE Utilities

Contents:

Chapter 1	Introduction.....	3
1.1	Profile Information.....	5
Chapter 2	C2N Applications.....	6
2.1	Services Tab.....	6
2.1.1.	<i>Add IP</i>	6
2.1.2	<i>Remove IP</i>	8
2.1.3	<i>Add Services</i>	9
2.1.4	<i>Remove Services</i>	9
2.1.5	<i>Shift IP</i>	10
2.1.6	<i>Download</i>	11
2.2.	Reset Password.....	11
Chapter 3	NCMS-CM.....	13
Chapter 4	CIM.....	14

Chapter 1 Introduction:

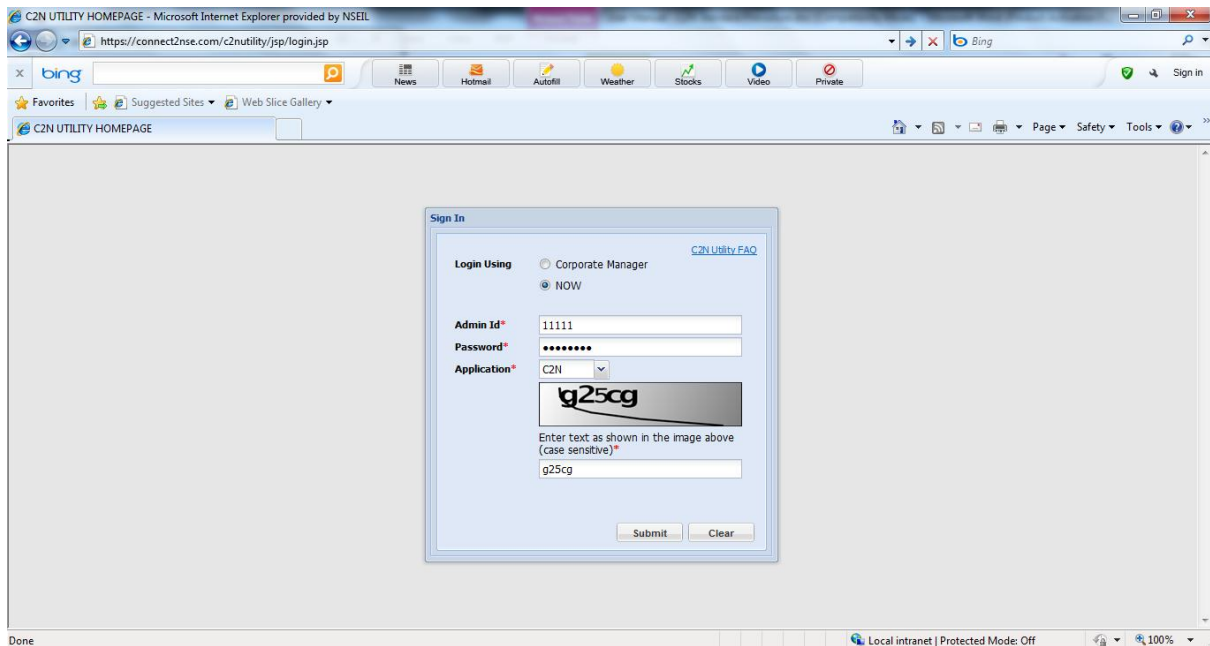
Connect2NSE Utilities is a facility provided to NSE members to manage services available on Connect2NSE with ease and efficiency. The link to these utilities is provided on the connect2NSE homepage. The member of the exchange in any segment viz. Capital Market (CM), Equity Derivatives Market (F&O) or Currency Derivatives Segment (CDS) can access Connect2NSE Utilities.



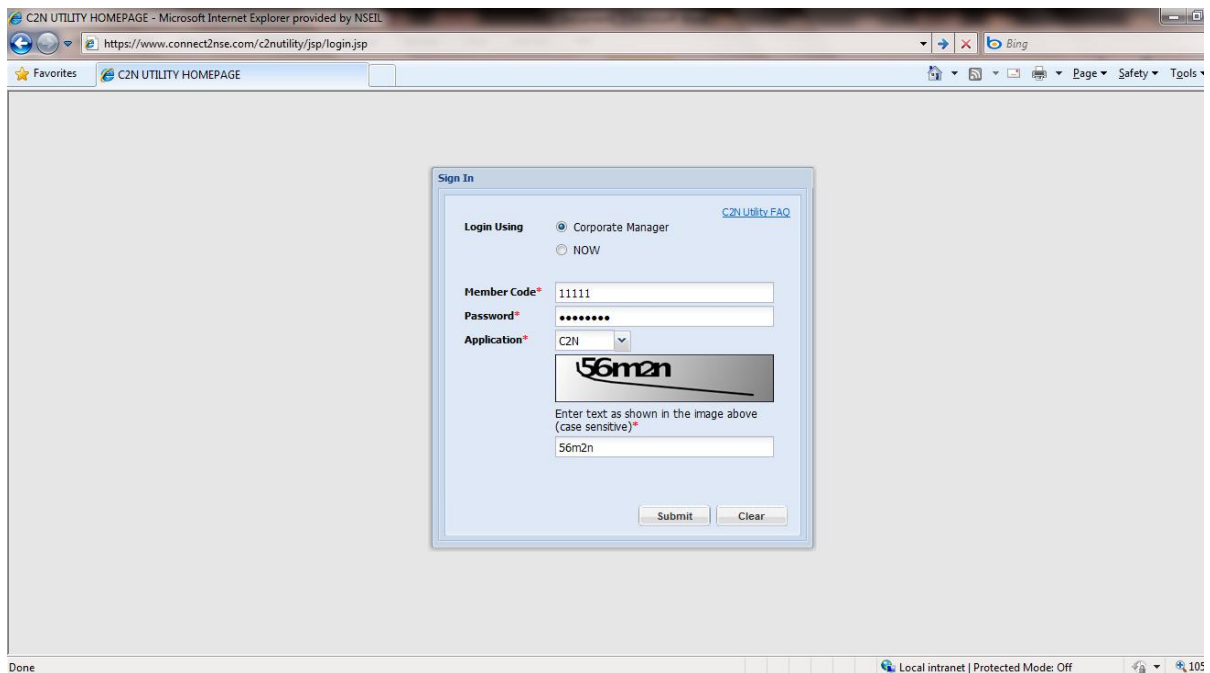
The member who wishes to avail this facility is required to go through following steps:

- Visit homepage <https://www.connect2nse.com>.
- Click on link Connect2NSE Utilities on the homepage
- Sign in
 - o If you are NOW user and wish to sign in with your NOW Admin User ID, choose NOW. Key in your NOW Admin User ID and appropriate password currently being used for such NOW Admin User ID.

User Manual for Connect2NSE Utilities



- If you are not NOW user or wish not to sign in with your NOW Admin User ID, click on corporate manager allotted by the NEAT trading system. Key in your trading member code and appropriate password currently being used for such corporate manager on NEAT trading system.



- At this juncture you need to provide the application you need to access. At present, three types of applications are available viz.
 1. C2N – The applications in this type include
 - a. Trade information (NOTIS) for CM, F&O and CDS
 - b. Margins information for CM, F&O and CDS
 - c. EXTRANET for CM, F&O and CDS
 - d. NCMS for F&O and CDS
 2. NCMS-CM

User Manual for Connect2NSE Utilities

3. CIM

- Lastly you need to enter CAPTCHA – ‘Completely Automated Public Turing test to tell Computers and Human Apart’. This is widely used challenge-response test used as a security feature.

1.1 Profile Information:

- This information needs to be maintained only for C2N applications.
- You need to enter name of the person to whom NOW Admin User ID/ NEAT Corporate Manager ID is issued (as the case may be), address of communication, contact number and company e-mail id. The information is mandatory.
- Please note that the member will be adequately informed at the end of each activity performed in C2N Utilities (except Password Reset) that the mail intimation would be sent on the email id provided in the profile along with the unique request number, date and time of the activity.
- This profile will be presented to you in all your subsequent sign in for updates, if any.

The screenshot shows a web browser window titled "C2N UTILITY HOMEPAGE" with the URL "https://connect2nse.com/c2nutility/jsp/login.jsp". The browser's address bar and search bar are visible. The main content area displays a form titled "Profile Information For Member ID 11111". The form contains the following fields:

- Name Of Person: john smith
- Address of communication: flat-3,street-2,anandnagar,jumbai
- Phone No. With STD Code: 02226596100
- Mobile Number: 98912345678
- Company Email Id: jsmith@nse.com
- NOTE: All further communications shall be sent to this email id only.
- Fax With STD Code: 02226596100

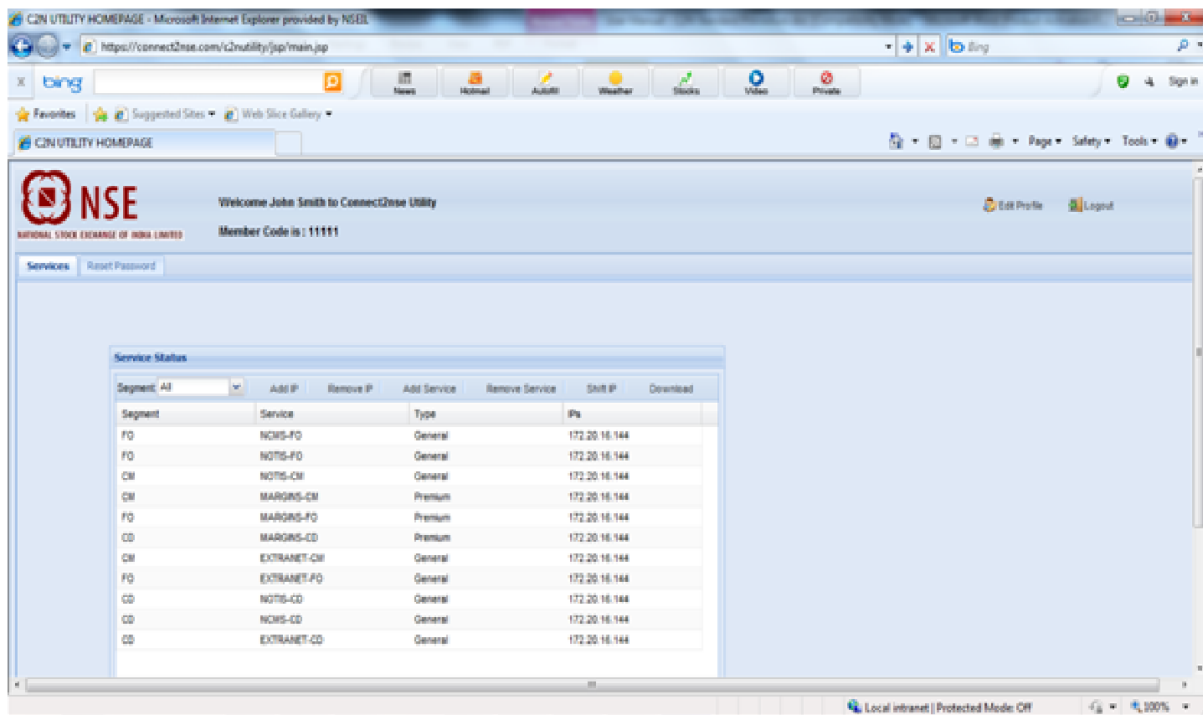
A legend at the bottom left of the form indicates that a red asterisk (*) denotes mandatory fields. At the bottom right of the form, there are two buttons: "Edit" and "No Updates".

Chapter 2 C2N Applications:

- To add/ remove/ shift IP addresses to access any of the above applications
- To add/ remove any of the above applications against your particular IP address.
- To download the information on your local drive.
- To reset the password of a particular user ID for the selected application.
- You can also reset your profile or log out from this page.

2.1 Services Tab:

This default tab allows you to view latest information on various applications (services) you have already registered on single/ multiple IP addresses. You can view the services segment wise or particular segment. The details displayed include segment, application, type (general - free/ premium - paid) and IP address. A click on the column header will sort the records in ascending/ descending order of the values in the column.



This tab also provides with following features:

- (a) Add IP
- (b) Remove IP
- (c) Add Service
- (d) Remove Service
- (e) Shift IP
- (f) Download

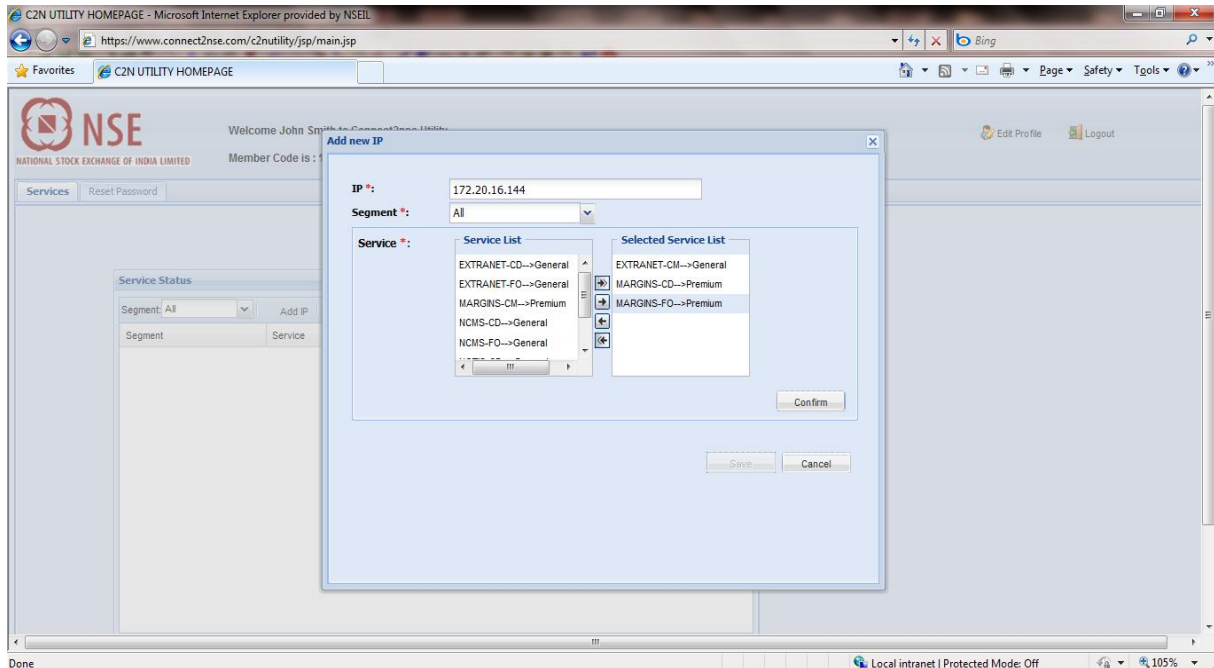
2.1.1. Add IP

You can register a new IP by choosing 'Add IP'. A new window will be available to you to fill up following information:

- IP Address

User Manual for Connect2NSE Utilities

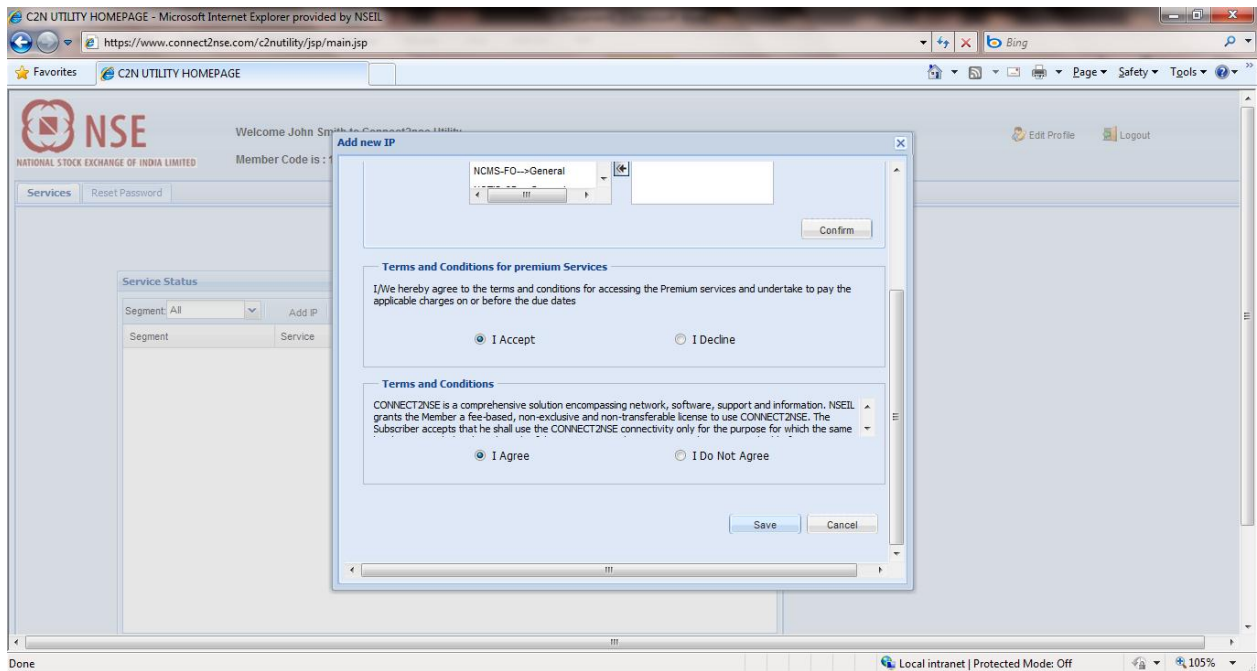
- You can enter valid IP address that is not already registered
- Segment
All/ selected list of applications from the segment can be linked to the IP address. Alternatively, if you wish to link applications across different segments to the IP address, select 'ALL'.
- Selected services list
The applications for selected segment/ all segments would appear in the list box on the left hand.
You can select the application(s) you wish to link to the IP from the list box and move it to 'selected service list' on the right hand.



Note: At least one application should be available in 'select application list' to move on with adding new IP.

You will be required to accept the terms and condition to access Connect2NSE. If any of the paid (premium) application is selected then an additional terms and conditions related to premium services are required to be accepted. Alternatively you can decline terms and conditions. However, in this case, your request will not be processed. If you accept the terms and conditions, a confirmation message will pop up on the screen.

User Manual for Connect2NSE Utilities

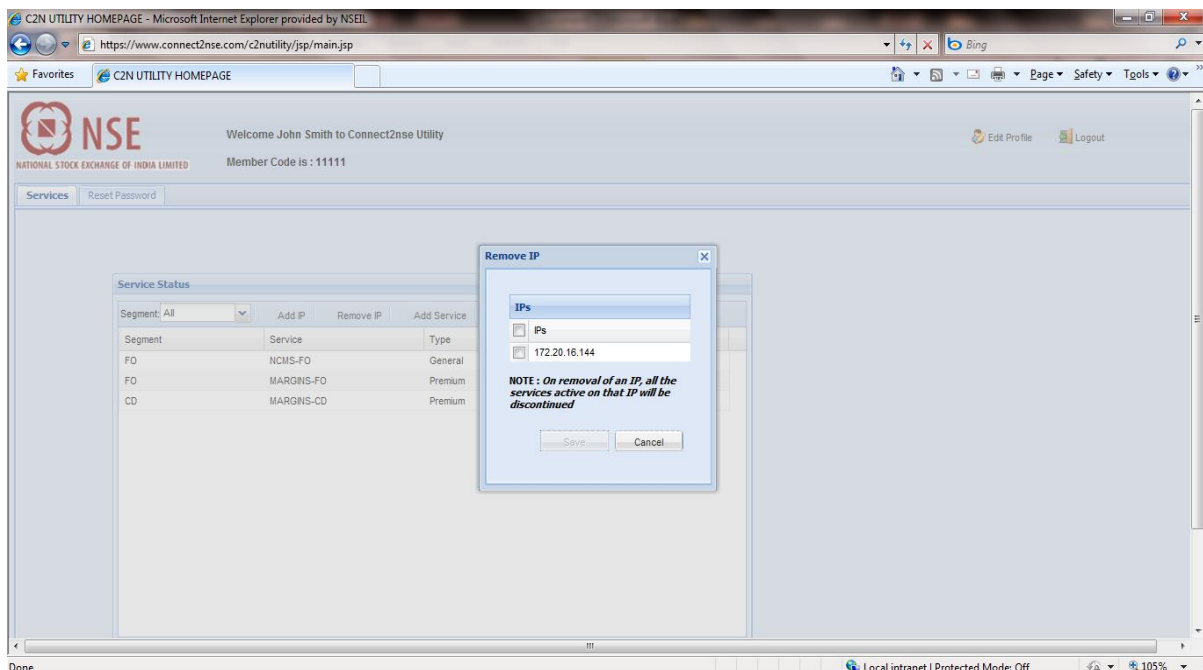


2.1.2 Remove IP

You can de-register an existing IP by choosing 'Remove IP'. A new window will be available to you to fill up following information:

- IP Address
You can choose the IP you would like to remove from the list of IP already registered
- Selected services list
You can view the list of applications linked to the IP address along with the segment and application type

An alert will pop up intimating that, upon confirmation, access to applications linked through this IP would be removed.

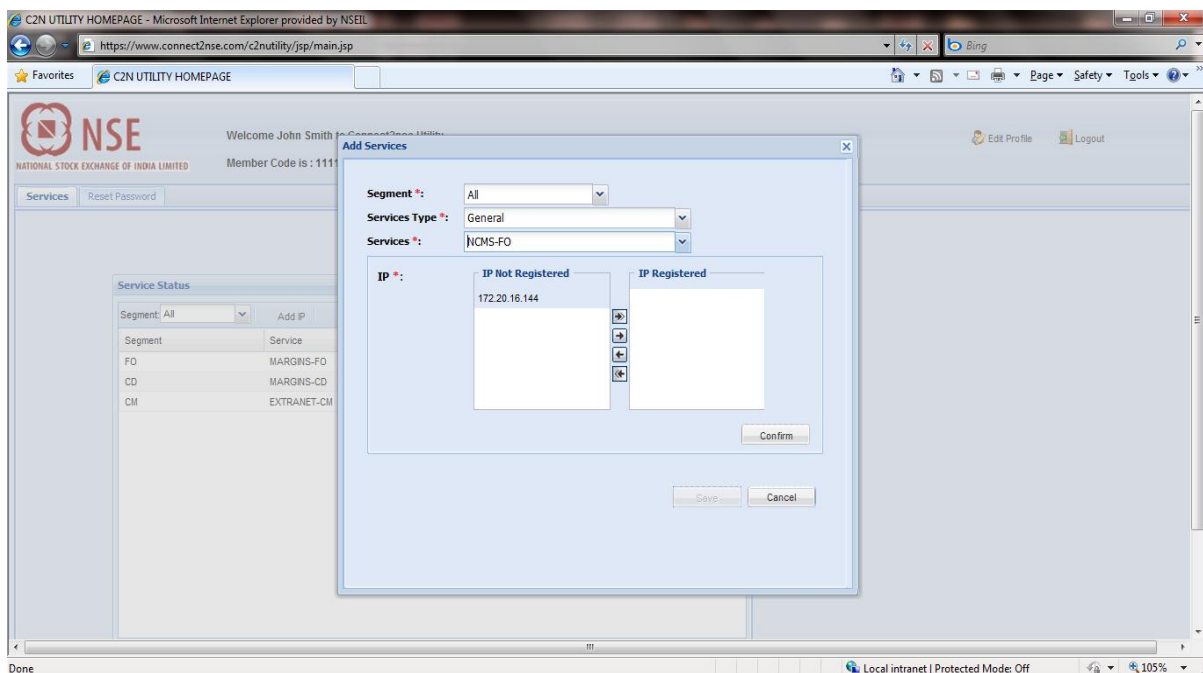


User Manual for Connect2NSE Utilities

2.1.3 Add Services

You can add an application to already registered IP by choosing 'Add Services'. A new window will be available to you to fill up following information:

- Segment
You can select the segment in which you wish to add an application. Alternatively, if you wish to add applications across different segments, select 'ALL'.
- Service Type
You can select General (free) or Premium (paid) as service type.
- Service
You can select the application to be added from the list filtered for the segment and service type combination
- IP Registered



The list of IP addresses registered with you but not linked to the selected application would appear in the list box on the left hand. You can choose the IP(s) to be linked to the application from the list box and move it to 'IP registered' on the right hand.

You will be required to accept the terms and condition to access Connect2NSE. If any of the paid (premium) application is selected then an additional terms and conditions related to premium services are required to be accepted. Alternatively you can decline terms and conditions. However, in this case, your request will not be processed. If you accept the terms and conditions, a confirmation message will pop up on the screen.

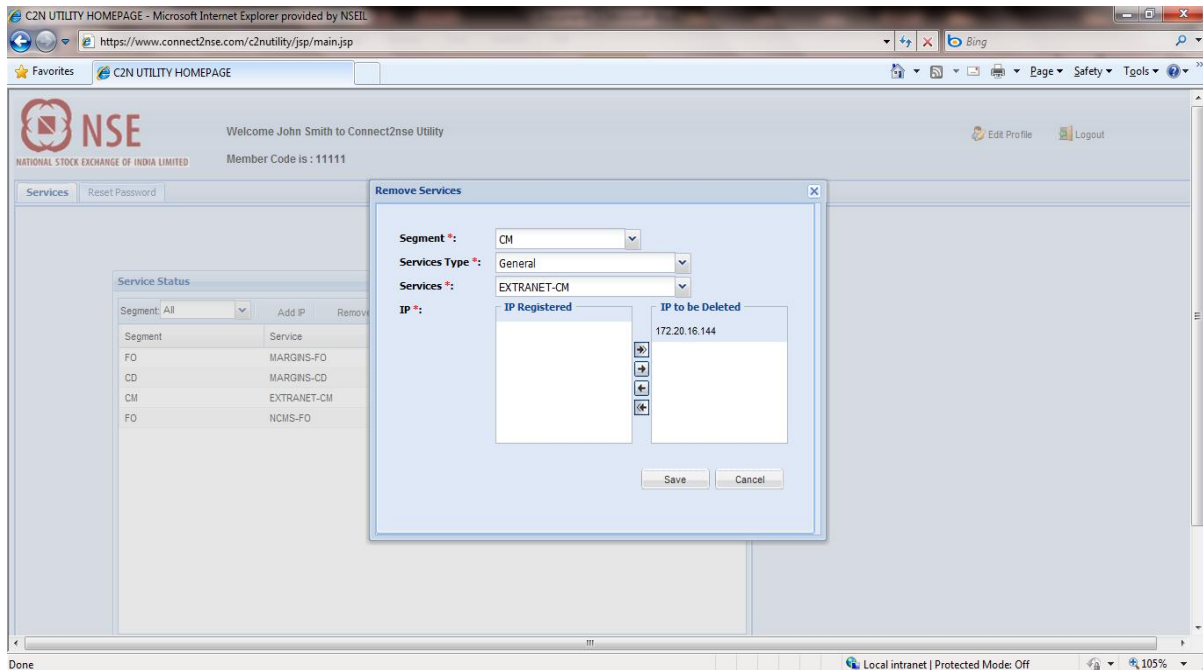
2.1.4 Remove Services

You can remove a service already linked to register IP(s) by choosing 'Remove Services'. A new window will be available to you to fill up following information:

- Segment
You can select the segment where the application to be removed belongs to. Alternatively, if you wish to remove applications across different segments, select 'ALL'.

User Manual for Connect2NSE Utilities

- Service Type
You can select General (free) or Premium (paid)
- Service
- You can select the application to be removed from the list filtered for the segment and service type combination
- IP to be deleted
The list of IP addresses registered for the selected application would appear in the list box on the left hand. You can choose the IP(s) to be de-linked from the selected application, from the list box and move it to 'IP to be deleted' on the right hand.



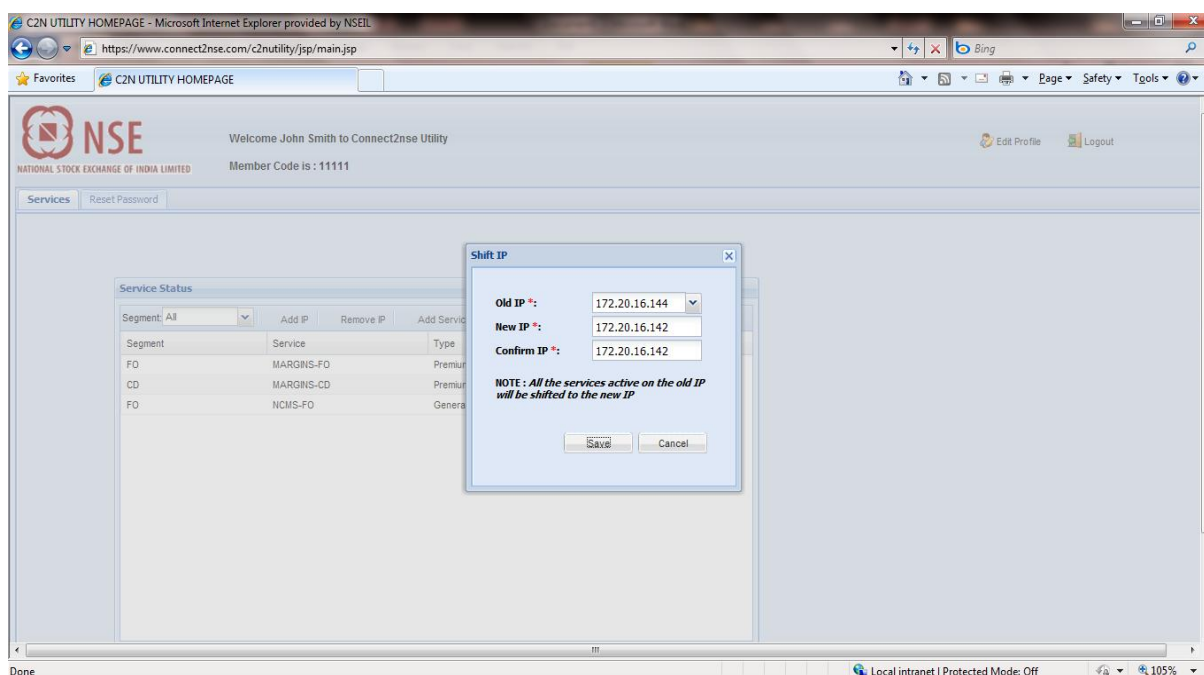
An alert will pop up intimating that, upon confirmation, access to applications linked through this IP would be removed.

2.1.5 Shift IP

You can shift all applications available on an IP to another unregistered IP, by choosing the 'Shift IP' option. A new window will be available to you to fill up following information:

- Old IP
You can select the IP from the list of registered IP
- New IP
You can enter valid IP address that is not already registered
- Confirm IP
You need to confirm the New IP by re-entering it.

User Manual for Connect2NSE Utilities



An alert will pop up intimating that, upon confirmation, access to applications linked through the old IP would be shifted to the new IP.

2.1.6 Download

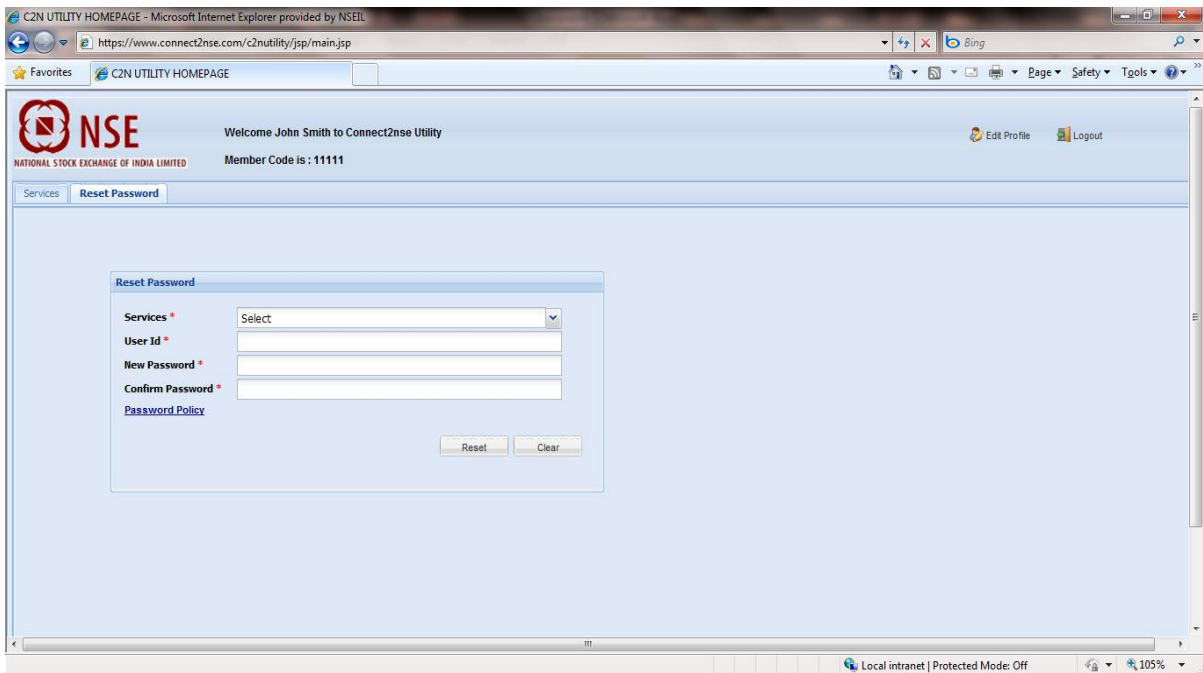
The window will display details of C2N applications across segments and service types currently registered with one or more IP(s). You can download this information to your local drive in either *.csv or *.xls format.

2.2. Reset Password:

You can reset the password of the ADMIN user id allotted by the exchange for a C2N application by choosing 'Reset Password'. A new window will be available to you to fill up following information:

- Services
You need to select the application from the list of registered applications. It is irrespective of the fact whether the application is registered with one or more IP(s).
- User ID
You need to enter ADMIN user id allotted by the exchange for the selected application
- New Password
You need to enter valid password in conformity with the set password policy.
Note: Current password policy require the password not to be same as old, eight characters long, at least one lower case alphabet, at least one upper case alphabet, at least one number and at least one special character.
- Confirm Password
You need to confirm new password by re-entering it.

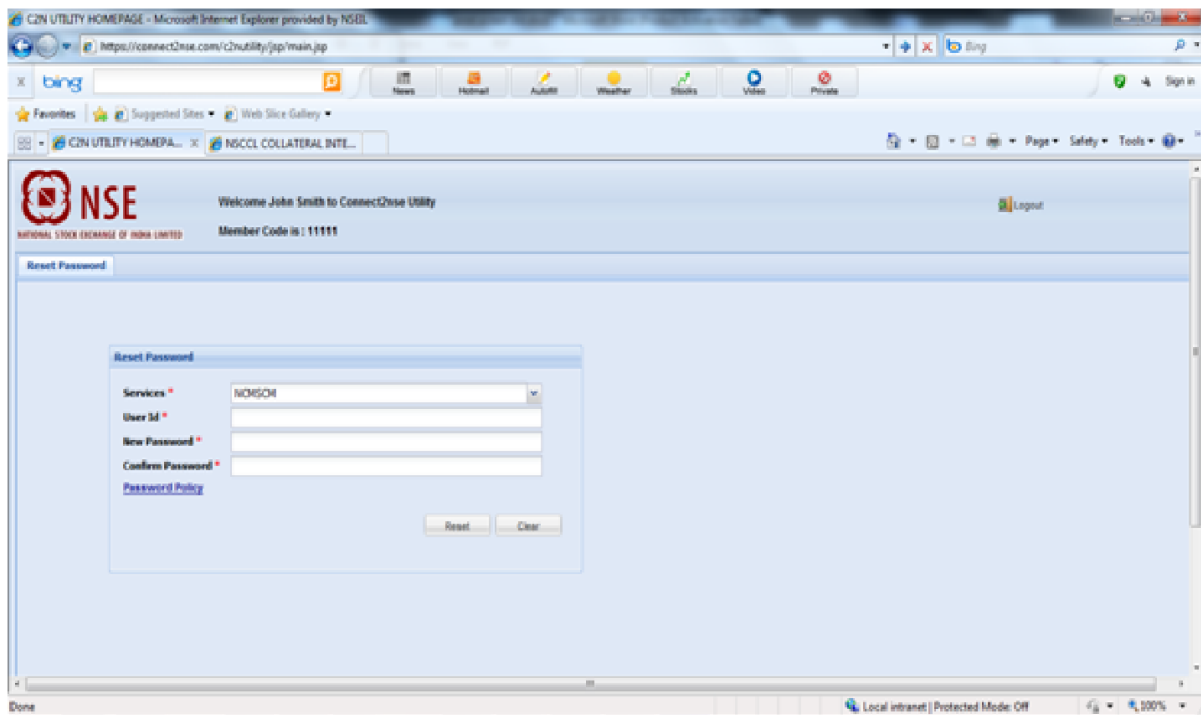
User Manual for Connect2NSE Utilities



Chapter 3 NCMS-CM:

You can reset the password of the ADMIN user id allotted by the exchange for NCMS – CM application by choosing ‘Reset Password’. A new window will be available to you to fill up following information:

- Services
Only NCMS – CM will be available for selection.
- User ID
You need to enter ADMIN user id allotted by the exchange for the selected application
- New Password
You need to enter valid password in conformity with the set password policy.
Note: Current password policy require the password not to be same as old, eight characters long, at least one lower case alphabet, at least one upper case alphabet, at least one number and at least one special character.
- Confirm Password
You need to confirm new password by re-entering it.



Chapter 4 CIM:

You can reset the password of the ADMIN user id allotted by the exchange for CIM application by choosing 'Reset Password'. A new window will be available to you to fill up following information:

- Services
Only CIM will be available for selection.
- User ID
You need to enter ADMIN user id allotted by the exchange for the selected application
- New Password
You need to enter valid password in conformity with the set password policy.
Note: Current password policy require the password not to be same as old, eight characters long, at least one lower case alphabet, at least one upper case alphabet, at least one number and at least one special character.
- Confirm Password
You need to confirm new password by re-entering it.

