



FriendlyNET™ FR3002AL Wireless Router

User Manual Addendum

Contents

1. Introduction	5
1.1 Functions and Features	5
1.2 Package Contents	5
2. Hardware Installation	7
3. FR3002AL Wireless Router Configuration	9
3.1 Configuring the Wireless Connections	9
3.2 Configuring the Wireless Connections	11
3.3 WEP Security Settings Screen	12
3.3.1 Configuring the WEP Security Settings	12
3.3.2 WEP Security and Apple Airport Wireless Cards	12
Appendix A. Tips for Better Wireless Reception	15

1. Introduction

Thank you for purchasing the Asanté FriendlyNET FR3002AL Wireless Router.

Note: This addendum briefly describes the basic installation and configuration of the router. For more complete information on features, please refer to the FR3000 Series User's Manual.

1.1 FUNCTIONS AND FEATURES

The Asanté FriendlyNET Wireless Router is a powerful gateway to a wide range of Internet services. With this device you can:

- Directly connect to the Internet with an ADSL or cable modem (not included)
- Share Internet service, files and other resources with up to 253 other users using NAT (network address translation)
- Provide automatic network address resolution (dynamic host configuration protocol server)
- Speed local traffic with an integrated 10/100 switch (up to 200 Mbps in full duplex mode)
- Protect local network traffic from unauthorized access through the router's natural firewall (network address translation)
- Allow access to computers on the LAN using Distributed Servers & DMZ (DeMilitarized Zone)

All of the features of the FriendlyNET router may be configured using any popular web browser.

1.2 PACKAGE CONTENTS

Please check all items you have received against this list to make sure nothing is missing or damaged. The complete package for the FriendlyNET router should contain the following items:

- 1 FR3002AL Wireless ready router
- 1 FR3002AL-1PCM Wireless ready router with 1 AeroLAN Wireless Adapter Card

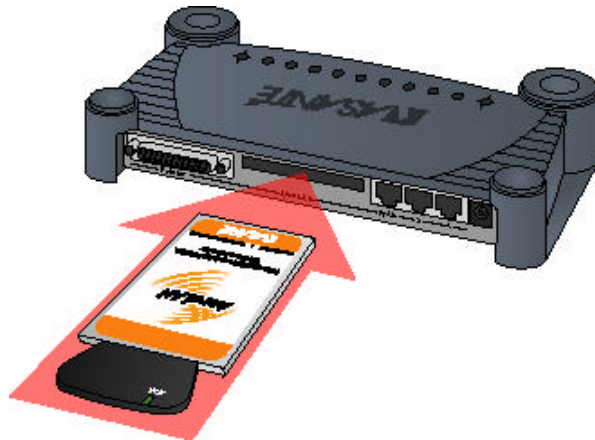
- FriendlyNET CD-ROM with documentation, drivers and utilities for Mac OS and Windows
- Power Adapter
- User's Manual
- Rubber Feet
- User Manual Addendum (this document)

2. Hardware Installation

This addendum is concerned with the installation and configuration of the wireless portion of the FR3002AL. Please refer to the FR3000 Series User's Guide for information on connecting the router to your ISP.

Please follow the steps below to install your wireless router:

1. Connect an Ethernet cable from the ADSL or cable modem port to the router's WAN port.
2. Insert the wireless adapter card into the PCMCIA port on the back of the router (card is included with the FR3002AL-1PCM only).



Note: The card must be installed before powering up your computer or router.

3. Connect a computer to one of the LAN ports of the router using an Ethernet workstation cable.
4. Connect the power supply to the router and to a working grounded outlet.
5. Allow the router to perform its self-test before progressing to the next step. Please refer to the User's Guide for information on the Power On Self Test (POST).
6. Once the router has completed the Power On Self Test (POST), it is ready to be configured. Proceed to the next section for information on configuring the wireless router.

3. FR3002AL Wireless Router Configuration

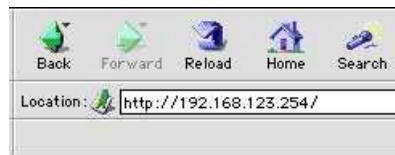
Before connecting wireless workstations to the FR3002AL, you will need to configure the router to receive wireless connections. Perform the following steps to configure the FR3002AL for wireless use:

3.1 Configuring the Wireless Connections

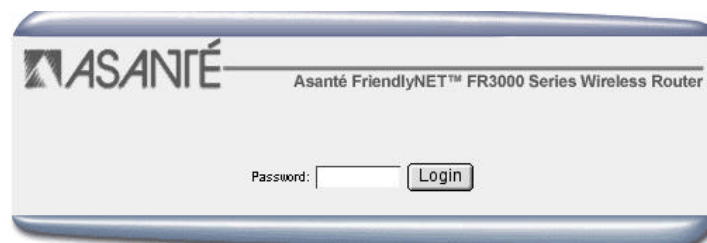
1. Verify that your router is able to connect to the Internet using the LAN ports of the router. For instructions on connecting the FR3002AL to your ISP, please refer to the Quick Start Guide at the beginning of the User's Guide.

Once the router is functioning properly with the ISP, through the LAN ports, you are ready to configure the wireless portion of your network.

2. If you are not already logged into the router, do so by launching your browser and entering the IP address of the router in the browser field. The default IP address of the router is 192.168.123.254.



3. Type the administrator's password into the login field and clicking the Login button. The default password is **admin**.

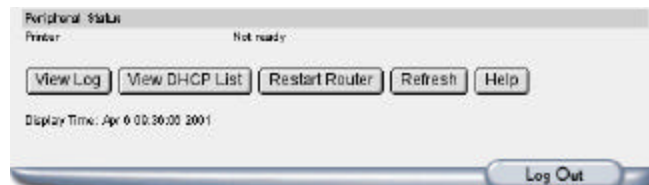


You will see the Status screen, which consists of 2 sections: The Router Status, and the Peripheral Status.

Router Status

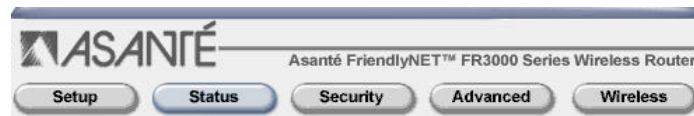


Peripheral Status

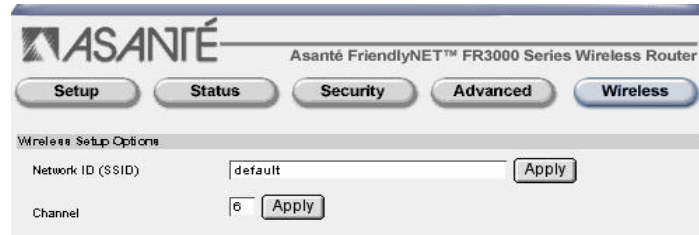


The Router Status section will reflect the status of the connection between the router and the ISP. The Peripheral Status section reflects the status of the Print Server if installed. Refer to the User's Manual for information on configuring the Print Server function.

4. Click on the Wireless Setup button at the top of the screen. This will bring you to the Wireless Configuration Screen. This screen consists of 2 parts: the Wireless Setup Options Screen, and the WEP Security Settings Screen.



3.2 Configuring the Wireless Setup Options



ASANTÉ Asanté FriendlyNET™ FR3000 Series Wireless Router

Setup Status Security Advanced **Wireless**

Wireless Setup Options

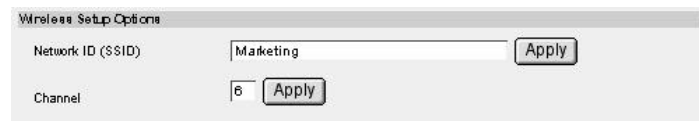
Network ID (SSID) default Apply

Channel 6 Apply

The FR3002AL is designed to function as a wireless access point using the default settings shown. If you wish to use more than one FR3002AL in your wireless network, you have the option of having one network with multiple access points (routers), or separate networks. If you wish to have one big wireless network, leave the settings at the factory default. If you wish to have each router in its own network and wish to keep the networks separate, however, you will need to designate a unique Network ID Name for each router. Enter a unique number from 1 to 13 in the Channel field.

Follow the instructions below to change the Wireless Setup options:

1. Enter a unique name in the Network ID (SSID) field. This name can be a combination of alpha or numeric numbers. Click the **Apply** button to save your changes.



Wireless Setup Options

Network ID (SSID) Marketing Apply

Channel 6 Apply

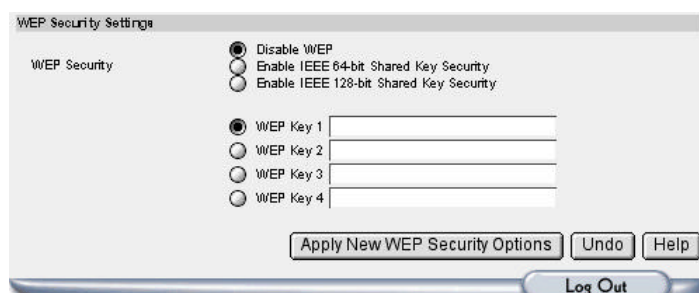
2. Enter a unique number in the Channel field. Click the **Apply** button to save your changes.

3.3 WEP Security Settings Screen

Most internal LAN traffic does not require additional security measures. If you are transferring sensitive files or other material over the wireless LAN, you may enable the WEP Security Settings. WEP stands for "Wired Equivalent Protocol".

3.3.1 Configuring the WEP Security Settings

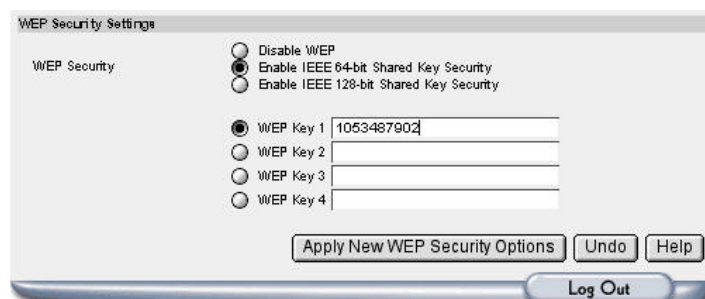
Follow the instructions below to configure the WEP Security feature:



1. Click on either the "Enable IEEE 64-bit Shared Key Security" button or the "Enable IEEE 128-bit Shared Key Security" to save your changes.

Note: Most wireless network cards utilize the 64-bit algorithm.

2. Enter either a 26 or 10 digit number into the WEP Key 1 field. Click the **Apply New WEP Security Options** button to save your changes.



Note: Advanced users may use a 26 or 10 digit hex-decimal number.

Note: Up to 4 WEP Keys may be configured. Each Key number must be different.

3.3.2 WEP Security and Apple Airport Wireless Cards

The Apple Airport Wireless Card and the FR3002AL enter and store the WEP Security Key differently. Due to these differences, the WEP Security feature will not work with the Airport Card. To use an Airport Card with the FR3002AL, disable the WEP security feature on **both** the card and the router.

Appendix A. Tips for Better Wireless Reception

The signal quality and range of any wireless Ethernet card is affected greatly by the environment in which they are placed. Here are some tips on getting the most out of your wireless network when using the Asanté FR3002AL wireless router:



- The best rule of thumb for good signal strength and quality is to have line-of-sight from the FR3002AL router to the wireless computers. This means the user should be able to see the router from the location where the wireless client is placed
- Keep the FR3002AL wireless router in an open area away from any large objects such as cubicles, walls or other obstructions
- Keep the FR3002AL router away from any electro-magnetic emitting devices such as computers, electrical cables, televisions, and other appliances commonly found in the home or office
- Keep obstructions from the immediate vicinity of wireless card antennas
- Elevate the FR3002AL wireless router above desktop clutter and low to mid-level obstructions, such as furniture
- Rotate the FR3002AL wireless router and computers until the best signal strength is achieved
- The number of walls windows, doorways and other building structures will reduce the range of the wireless signal. Place the FR3002AL router in the path of least resistance through these structures for the best signal quality to the wireless workstations
- The type of walls, windows, doorways or other building structures will affect the range of the wireless signal. Structures such as metal framed houses, windows containing UV protective film, and residences with multiple floors will all affect the signal quality
- Standing too close to a wireless Ethernet card antenna will affect its signal strength and quality



Asanté Technologies, Inc.
821 Fox Lane
San Jose, CA 95131
USA

FriendlyNET FR3002AL Wireless Router
FR3002AL
User Manual Addendum

SALES

800-662-9686 Home/Office Solutions
800-303-9121 Enterprise Solutions
408-435-8388

TECHNICAL SUPPORT

801-566-8991 Worldwide
801-566-3787 FAX
www.asante.com
support@asante.com

COVER: Asanté FriendlyNET FR3002AL Wireless Router

Copyright © 2001 Asanté Technologies, Inc. All rights reserved. No part of this document, or any associated artwork, product design, or design concept may be copied or reproduced in whole or in part by any means without the express written consent of Asanté Technologies, Inc. Asanté is a registered trademark and the Asanté logo, AsantéCare, and FriendlyNET are trademarks of Asanté Technologies, Inc. All other brand names or product names are trademarks or registered trademarks of their respective holders. All features and specifications are subject to change without prior notice.
06-00600-00, 04/01 A