



**Stellar Phoenix**  
**SQL Database Repair 6.0**  
**User Guide**

# Overview

**Stellar Phoenix SQL Database Repair** software is an easy to use application designed to repair corrupt or damaged Microsoft SQL Server database (MDF) files in a safe and non-destructive manner. It uses powerful algorithms to perform thorough scan of MDF file so as to recover as much data as possible. The software never deletes or modifies original data and even heavily damaged files can be optimally repaired and restored.

Microsoft SQL server system is a full-fledged relational database management system (RDBMS) that offers an exclusive variety of a number of administrative tools for database development, maintenance, and administration. Microsoft SQL Server database files ( MDF ) can get damaged or corrupted due to a number of reasons such as virus attack, unexpected system shutdown, media read error, and so on.

## Key Features

- Support for MS SQL Server 2016, MS SQL Server 2014, MS SQL Server 2012 R2, 2012, MS SQL Server 2008 R2, 2008, 2008 (64 bit), 2008 Express, MS SQL Server 2005, 2005 (64 bit), 2005 Express, MS SQL Server 2000, 2000 (64 bit), 7.0 and mixed formats.
- Searches MDF files in the computer.
- Displays preview of recoverable database objects.
- Allows finding of object name in tree view.
- Supports Sequence Objects in MS SQL Server.
- Supports MS SQL Server ROW Compressed data.
- Supports MS SQL Server PAGE Compressed data.
- Supports Standard Compression Scheme for Unicode (SCSU) in SQL Server.
- Recovers Column Row GUID COL Property.
- Recovers Sp\_addextended Property.
- Saves non-recovered queries, views, stored procedures, etc. in a text file.
- Support for automatic recreation of a new database having all the recovered database items.
- Support for large SQL Server MDF files for all versions.
- Support for XML data types.
- Support for XML indexes.
- Support for SQL Server file stream data types.
- Support for SQL Server sparse columns.

- Support for SQL Server columns set property.
- Support for separate log report after scanning database.
- Support for Sorted tables in tree view and generates sorted log report.
- Support for fast scanning algorithms.
- Support for total row count detail in each table for all versions.
- Recovery of Tables, Triggers, and Views.
- Recovery of Collations.
- Recovery of Stored Procedure, Synonyms, and Functions.
- Recovers of Defaults and Default constraints.
- Recovery of Primary Keys, Foreign Keys, Unique Keys, and Identity.
- Recovery of Indexes ( Clustered, Non - Clustered indexes).
- Recovery of Check constraints, User Defined Data Types, and Null / Not null.
- Recovery of Predefined defaults, default values, and Rules.
- Compatible with Windows Server 2012 / 2008 / 2003 and Windows 10 / 8 / 7 / Vista / XP.

# What's New in This Version?

**New features in Stellar Phoenix SQL Database Repair include:**

- Support for MS SQL Server 2016.
- Option to recover deleted records.
- Option to save repaired database to Live database.
- Option to save repaired database as CSV, HTML and XLS.

# Installation Procedure

Before beginning the installation procedure, make sure that the computer meets the minimum system requirements.

## Minimum System Requirements

**Operating system:** Windows Server 2012 / 2008 / 2003 and Windows 10 / 8 / 7 / Vista / XP

**Hard Disk:** At least 50 MB of free disk space

**RAM:** 1 GB minimum (2 GB recommended)

**MS SQL Server:** MS SQL Server 2016, MS SQL Server 2014, MS SQL Server 2012, MS SQL Server 2008 R2, 2008, 2008 (64 bit), 2008 Express, MS SQL Server 2005, 2005 (64 bit), 2005 Express, MS SQL Server 2000, 2000 (64 bit), 7.0 and mixed formats.

## To install the software, follow the steps:

1. Double-click **StellarPhoenixSQLDatabaseRepair.exe**. **Setup** dialog box is displayed.
2. Click **Next** to continue. **License Agreement** dialog box is displayed.
3. Select **I accept the Agreement** option. Click **Next**.
4. Specify the location where the installation files are to be stored. Click **Next**.
5. Select the folder where the files are to be stored. A default folder is suggested in the box. Click **Browse** to select a different location. Click **Next**.
6. In the **Select Additional Tasks** dialog box, select check boxes as per your choice. Click **Next**.
7. Review your selections. Click **Back** if you want to make any change. Click **Install** to start installation. The Installing window shows the installation process.
8. After completion of the process, **Completing the Stellar Phoenix SQL Database Repair Setup Wizard** window opens. Click **Finish**.

**Note:** Clear **Launch Stellar Phoenix SQL Database Repair** check box to prevent the software from launching automatically.

# Launching the Software

## To launch Stellar Phoenix SQL Database Repair in Windows 10:

- Click Start icon -> All apps -> **Stellar Phoenix SQL Database Repair** -> **Stellar Phoenix SQL Database Repair** Or,
- Double click **Stellar Phoenix SQL Database Repair** icon on the desktop. Or,
- Click **Stellar Phoenix SQL Database Repair** tile on the home screen.

## To launch Stellar Phoenix SQL Database Repair in Windows 8:

- Click **Stellar Phoenix SQL Database Repair** tile on the home screen. Or,
- Double click **Stellar Phoenix SQL Database Repair** icon on the desktop.

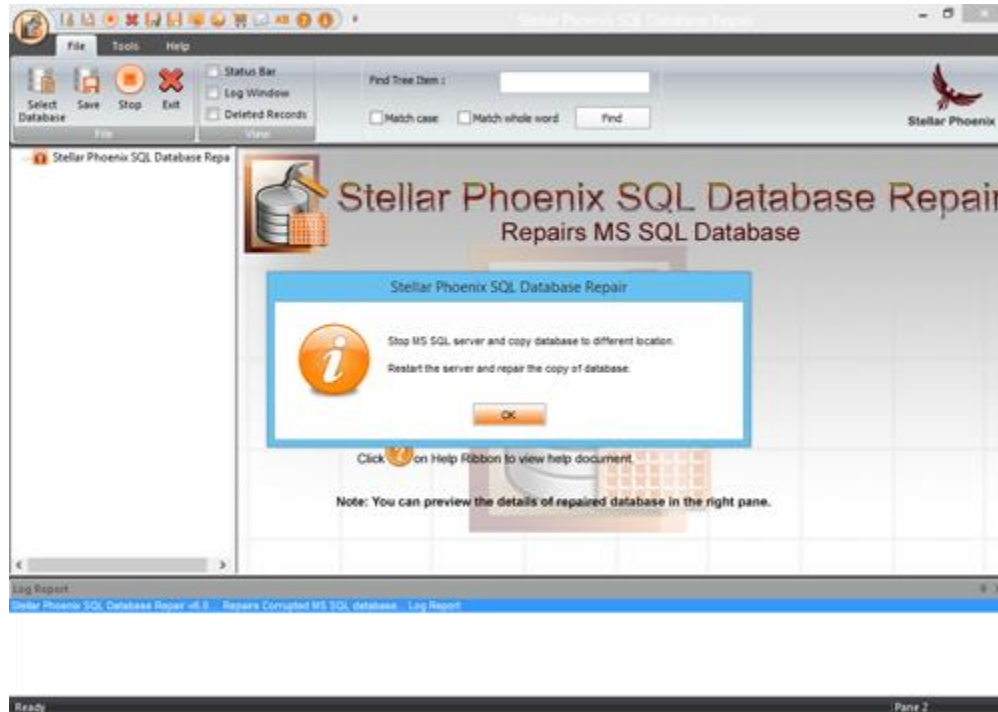
## To start the application, do one of the following in Windows 7 / Vista / XP:

- Click Start -> All Programs -> **Stellar Phoenix SQL Database Repair** -> **Stellar Phoenix SQL Database Repair**. Or,
- Double click the **Stellar Phoenix SQL Database Repair** icon on the desktop. Or,
- Click **Stellar Phoenix SQL Database Repair** icon in Quick launch.

# User Interface

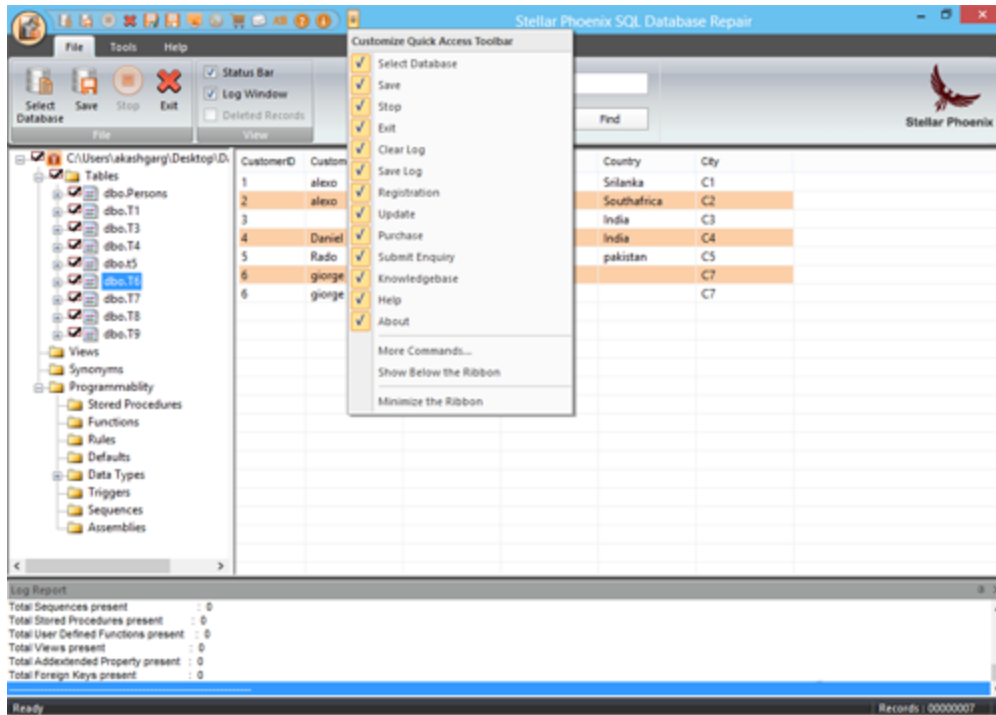
**Stellar Phoenix SQL Database Repair** software has a very easy to use Graphical User Interface. The user interface contains features required for complete recovery of corrupt MS SQL Server (MDF) files.

After launching the program, you will see the main user interface as shown below:

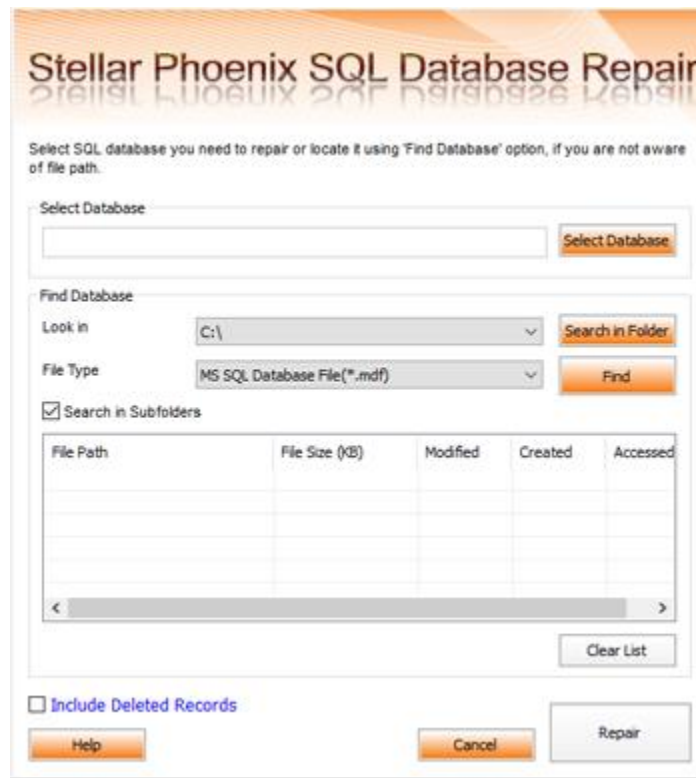


The user interface contains menus and buttons that lets you access various features of the software with ease.

You can also access various features of **Stellar Phoenix SQL Database Repair** via the **Quick Access Toolbar**, which appears at the top of the user interface, and can be customized as per your requirement.



When you start **Stellar Phoenix SQL Database Repair**, the **Select SQL database** dialog box opens as shown below:





To select a database, click on **Select Database** button. Select the MDF file that needs to be repaired and then click **Repair** to start the repairing process.

**Stellar Phoenix SQL Database Repair** also allows you to search for MDF file that needs to be repaired, in case you don't know it's location. In **Find Database** section, select the drive in which you want to search for the MDF file and then Click **Find** to start searching for files.

**Note:** *Select SQL database dialog box can also be opened by selecting **Select database** in the File menu.*

# Menus

## File Menu

### Select Database

Use this option to select the corrupt SQL database for repairing.

### Save

Use this option to save the repaired SQL database.

### Stop

Use this option to stop the repairing process.

### Exit

Use this option to quit Stellar Phoenix SQL Database Repair.

### View

Use this option to view or hide the **Status Bar** and **Log Window**.



File Menu

## Tools Menu

### Save Log

Use this option to save the log report.

### Clear Log

Use this option to clear the log report.

### Register

Use this option to register the software after purchasing.



Tools Menu

## Update

Use this option to update the software.

## Help Menu

### Purchase

Use this option to buy **Stellar Phoenix SQL Database Repair**.

### Submit Enquiry

Use this option to submit enquiry to [stellarinfo.com](http://stellarinfo.com)

### Knowledge Base

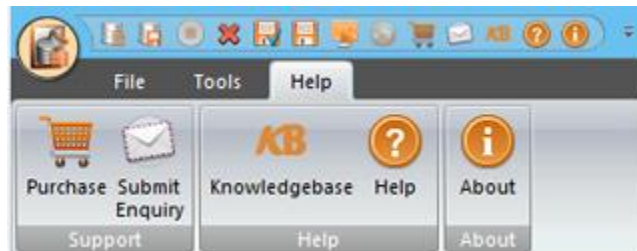
Use this option to visit the Knowledge Base articles of [stellarinfo.com](http://stellarinfo.com)

### Help

Use this option to open the help manual for the software.

### About

Use this option to read more information about the software.



**Help Menu**

# Buttons



Click this button to open Select SQL database dialog box.



Click this button to save the repaired SQL database.



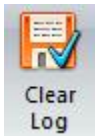
Click this button to stop the repairing process.



Click this button to quit Stellar Phoenix SQL Database Repair.



Click this button to save the log report, which contains the details of the repairing process.



Click this button to clear the log report.



Click this button to register the software after purchasing.



Click this button to update your software. Use this option to check for both, major and minor versions of the software.



Click this button to purchase the software.



Click this button to submit an enquiry to [stellarinfo.com](http://stellarinfo.com)



Click this button to visit the Knowledge Base articles of [stellarinfo.com](http://stellarinfo.com)



Click this button to open the help manual for **Stellar Phoenix SQL Database Repair**.



Click this button to read more information about the software.

# Ordering the Software

Click <http://www.stellarinfo.com/sql-recovery.htm> to know more about **Stellar Phoenix SQL Database Repair**.

To purchase the software online, please visit <http://www.stellarinfo.com/database-recovery/sql-recovery/buy-now.php>

Alternatively, click on **Purchase** icon in **Help Menu** on **Menu Bar** to purchase the software online.

Select either of the methods given above to purchase the software.

Once the order is confirmed, a serial number will be sent to you through e-mail, which would be required to activate the software.

# Registering the Software

You can visit <http://www.stellarinfo.com/sql-recovery.htm> to download demo version of **Stellar Phoenix SQL Database Repair** software. The demo version is just for evaluation purposes and you must eventually register the software to use its full functionality. Once you purchase the software, you will receive a key using which you can register the software.

**You can register the software using any of the following methods:**

- Online Registration

After purchasing the software, a serial number will be sent via email, which is required to register the software. You need to enter the serial number, which is then verified by a license server and on verification, the software is registered.

- Manual Registration

To register the software manually, you will need to generate a PHX\_REG.txt file and mail it to [support@stellarinfo.com](mailto:support@stellarinfo.com). After verification of the serial number and purchase details, the site key, which is required to register the software manually, will be sent to your email address.

**Note:** *If the software is downloaded from <http://www.stellarinfo.com/sql-recovery.htm> (i.e., ESD version), it must be registered using Serial Number (received through email after purchasing the product) to use all the features of the software.*

*If the software is installed using the product installation CD (i.e., BOX version), hardware lock, that is available with the software kit, is mandatory for the functioning of the software.*

# Online Registration

To register the software online:

1. Launch demo version of **Stellar Phoenix SQL Database Repair** software.
2. In **Tools Menu** on **Menu Bar**, Click **Register**.
3. In **Registration Option** dialog box, select **I have the registration key**.
4. Select **Online Registration**. Click **OK**. A warning will appear, click **OK** to continue.
5. In **Welcome to Stellar Phoenix - Electronic Registration Wizard**, click **Next**.
6. Type the serial number (received through email after purchasing the product) in serial number field. Click **Next**.
7. The software would automatically communicate with the license server. After the registration is done, click **Finish** to complete the registration process.



Registration Screen

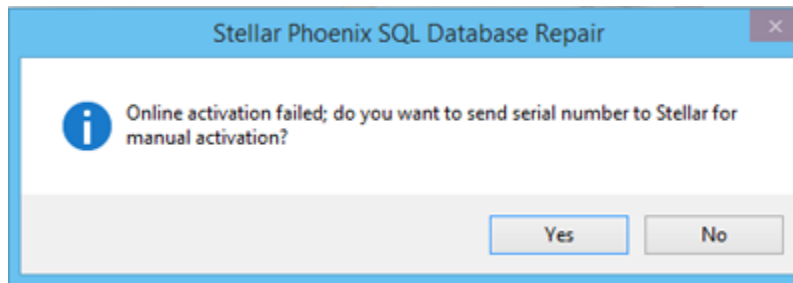
**Note:** You can generate PHX\_REG.txt file manually via online activation. View [Manual Registration](#) to perform the process of generating PHX\_REG.txt file.



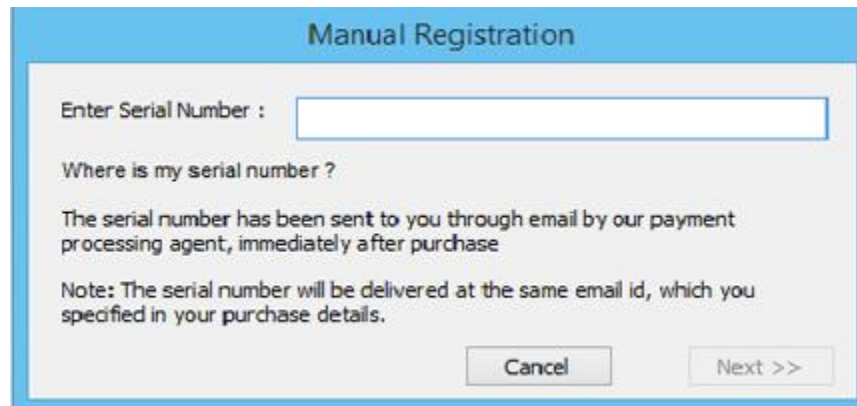
# Manual Registration

## To register the software manually:

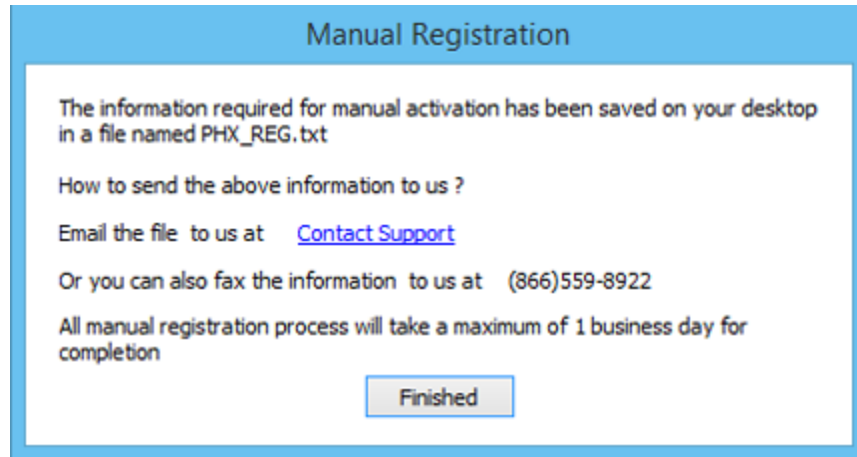
1. Launch the demo version of **Stellar Phoenix SQL Database Repair**.
2. In **Tools Menu** on **Menu Bar**, Click **Register**.
3. In **Registration Option** dialog box, select **I have the registration key**.
4. Select **Online Registration**. Click **OK**. A warning will appear, click **OK** to continue.
5. In **Welcome to Stellar Phoenix - Electronic Software Registration** wizard, click **Cancel**.
6. Stellar Phoenix SQL Database Repair dialog box will open, click **Yes**.



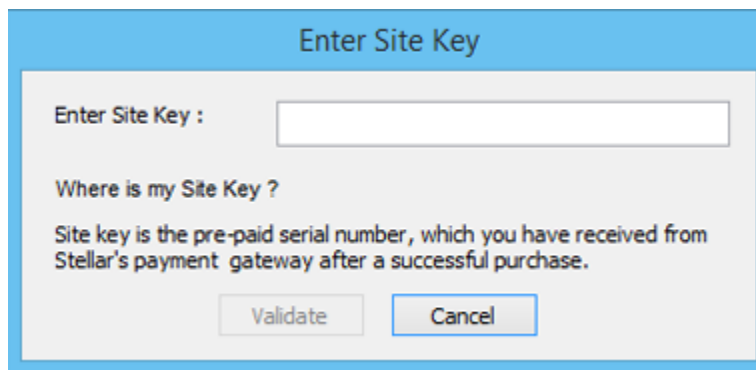
7. In **Manual Registration** dialog box, enter the serial number that you receive once you purchase the software. Click **Next**.



8. A file named PHX\_REG.txt is created on your desktop. Email it to [support@stellarinfo.com](mailto:support@stellarinfo.com). Click **Finished**.



9. After verifying the purchase details, you will receive the site key, which is required to register the software manually.
10. After receiving the Site Key, open **Stellar Phoenix SQL Database Repair**. In **Registration Option** dialog box, select **I have the registration key**.
11. Select **Manual Registration** and Click **OK**.
12. Enter the Site Key in **Enter Site Key** dialog box. Click **Validate**.



**Note:** The site key is delivered to the email address through which the serial number is sent.

# Updating the Software

Stellar releases periodical software updates for **Stellar Phoenix SQL Database Repair** software. You can update the software to keep it up-to-date. These updates can add a new functionality, feature, service, or any other information that can improve the software. Update option of the application is capable of checking for latest updates. This will check for both latest minor and major versions available online. You can easily download minor version through the update wizard. However, the major version, if available, has to be purchased. While updating the software, it's recommended to close all the running programs. Note that demo version of the software cannot be updated.

## To update Stellar Phoenix SQL Database Repair:

1. In **Tools Menu**, Click **Update**.
2. **Stellar Phoenix Update Wizard** window opens. Click **Next**. The wizard will search for latest updates, and if it finds any new updates, a window will pop up indicating its availability.
3. Click **Next** and the software will download the files from the update server. When the process is complete, the software will upgrade to the latest version.

## Live Update may not happen due to following reasons:

- Internet connection failure
- Updates are not available
- Unable to download configuration files
- Unable to locate updated files or version
- Unable to locate executable file

*Note: If a major version is available, you need to purchase the software in order to upgrade it.*

# Stellar Support

Our Technical Support professionals will give solutions for all your queries related to Stellar products.

You can either call us or go online to our support section at <http://www.stellarinfo.com/support/>

For price details and to place the order, click <http://www.stellarinfo.com/database-recovery/sql-recovery/buy-now.php>

Chat Live with an **Online** technician at <http://www.stellarinfo.com/>

Search in our extensive **Knowledge Base** at <http://www.stellarinfo.com/support/kb>

Submit enquiry at <http://www.stellarinfo.com/support/enquiry.php>

Send e-mail to **Stellar Support** at [support@stellarinfo.com](mailto:support@stellarinfo.com)

<b>Support Helpline</b> <b>Monday to Friday [ 24 Hrs. a day ]</b>	
USA (Tollfree- Pre Sales Queries)	+1-877-778-6087
USA (Post Sales Queries)	+1-732-584-2700
UK (Europe)	+44-203-026-5337
Australia & Asia Pacific	+61-280-149-899
Netherlands Pre & Post Sales Support	+31-208-111-188
Worldwide	+91-124-432-6777
Email Orders	<a href="mailto:orders@stellarinfo.com">orders@stellarinfo.com</a>

## How To...

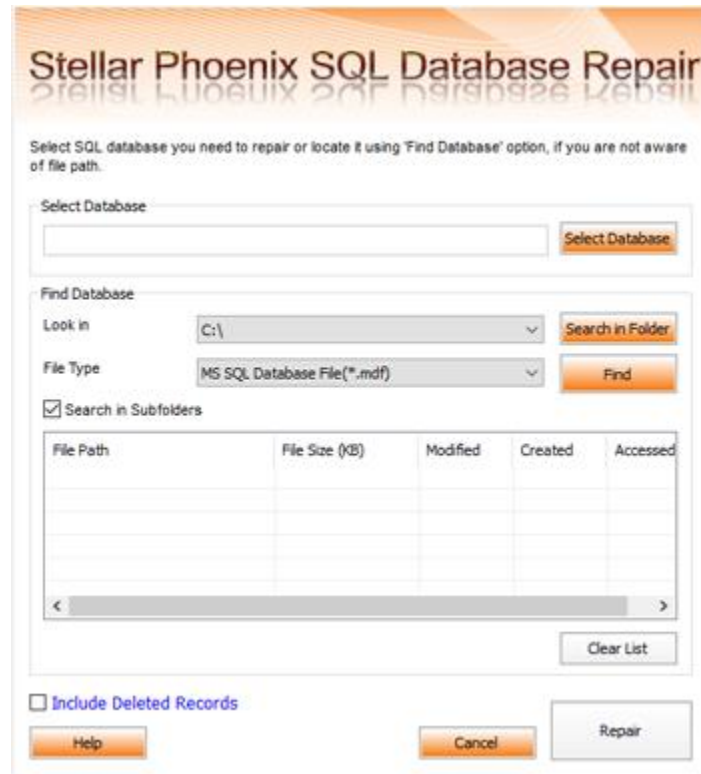
- Select MS SQL database (MDF) File
- Include Deleted Records
- Repair MDF files
- Preview and Save MDF Files
- Find Specific Item In Tree
- Save Log Report

# Select MS SQL Database (MDF) File

## To select MDF file:

**Stellar Phoenix SQL Database Repair** allows you to select MS SQL database (MDF) files from your computer for the repairing process.

1. Open **Select SQL Database** dialog box by clicking **Select Database** button on the **Quick Access Toolbar** or by choosing **Select Database** icon from **File Menu**.
2. In **Select SQL Database** dialog box, click **Select Database**.
3. **Open** dialog box will appear. Browse and select the desired file and then click **Open**.
4. Select '**Include Deleted Records**' check box to recover deleted records (if found) during the repairing process.



## To find MDF File:

**Stellar Phoenix SQL Database Repair** also allows you to search for MS SQL database (MDF) files in your computer. Using **Find Database** option, you can search for MS SQL Database files in your computer's drives, folders and sub folders. However, you can only select one drive at a time to search for MS SQL Database files.

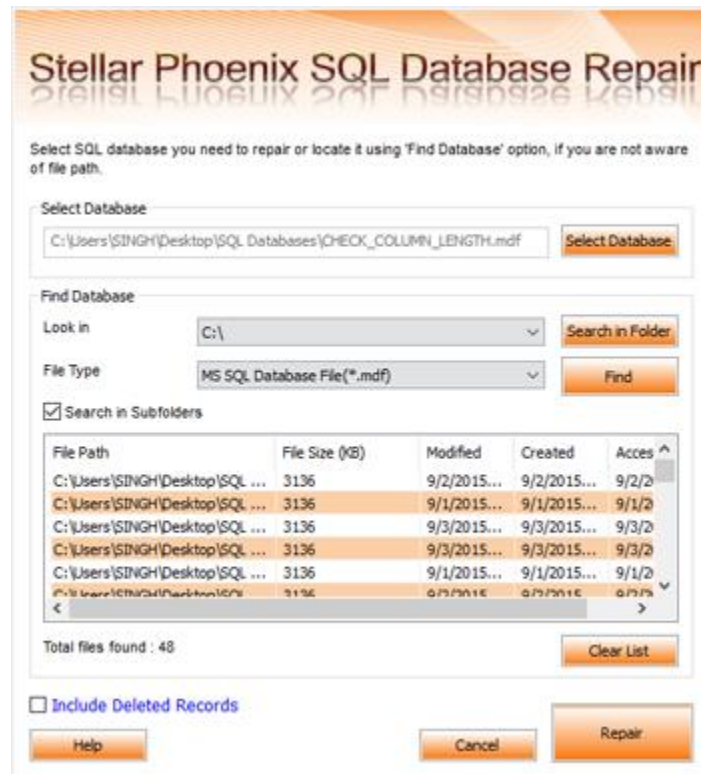
## To find MDF files in drives:

1. Open **Select SQL Database** dialog box by clicking **Select Database** button on the **Quick Access Toolbar** or by choosing **Select Database** icon from **File Menu**.
2. From **Look in** field under **Find Database** section, select the drive you want to search for MDF files. Click **Find**.
3. After the search is finished, a list of MS SQL Database files found in the selected drive is shown.

## To find MS SQL Database files in folders and subfolders:

1. Open **Select SQL Database** dialog box by clicking **Select Database** button on the **Quick Access Toolbar** or by choosing **Select Database** icon from **File Menu**.
2. In **Select SQL Database** dialog box, click **Search in Folder** button. **Browse for Folder** dialog box opens.
3. Select the folder in which you want to search MDF files. Click **OK**. Also, if you want to search subfolders within that folder, select **Search in Subfolders** checkbox. Click **Find**.
4. After the search is finished, a list of MS SQL Database files found in the selected drive is shown.
5. Select file you wish to repair from this list and click **Repair** button to start the repairing process.

**Note:** Click **Clear List** button to clear the search result.



# Include Deleted Records

**Stellar Phoenix SQL Database Repair** provides you an option to include deleted records in MS SQL database (MDF) repaired file.

**To include deleted records follow the steps given below:**

1. Select the file by clicking on the **Select Database** icon from the **File Menu** or from the list of MS SQL Database files found, select the desired file to repair.
2. Select '**Include Deleted Records**' check box to recover deleted records (if found) during the repairing process.

Select SQL database you need to repair or locate it using 'Find Database' option, if you are not aware of file path.

Select Database

E:\DRS10012013\ER7\ER7\DATA1.mdf

Find Database

Look in C:\

File Type MS SQL Database File (\*.mdf)

Search in Subfolders

File Path	File Size (KB)	Modified	Created	Accessed

Include Deleted Records

3. Click **Repair** to start the repairing process. Repairing of the selected files is performed by the tool.

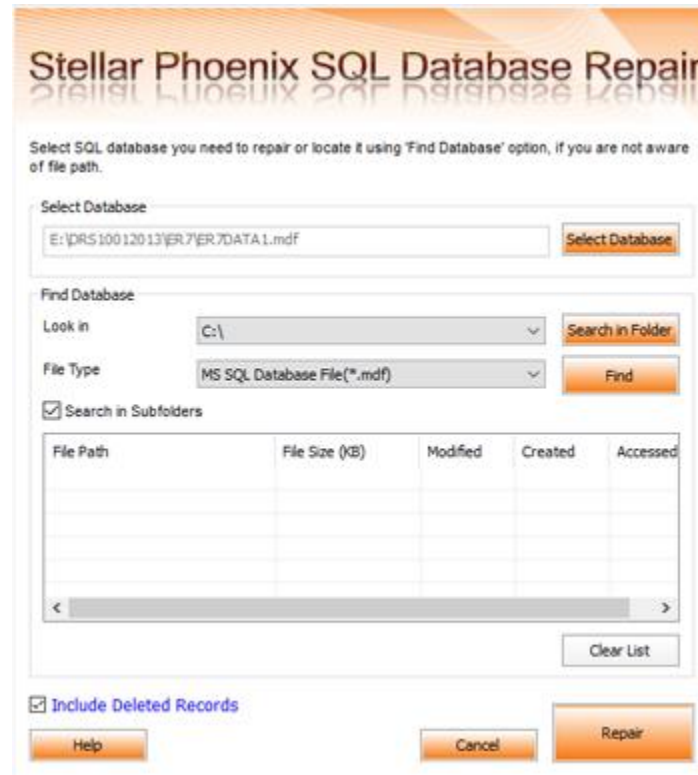


# Repair MDF Files

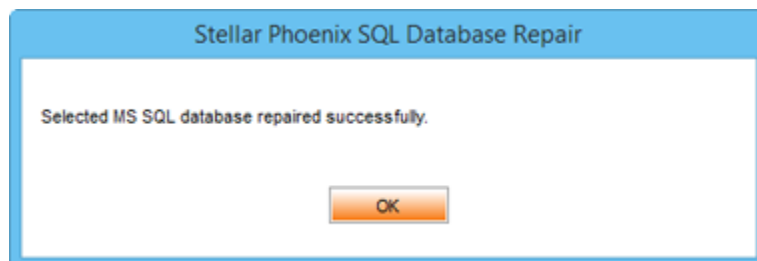
**Stellar Phoenix SQL Database Repair** repairs MS SQL Database (MDF) files and allows you to save to your preferred location. You can also preview the repaired database before saving it.

## To repair MS SQL Database files:

1. Select the file by clicking on the **Select Database** icon from the **File** menu or from the list of MS SQL Database files found, select the desired file to repair.

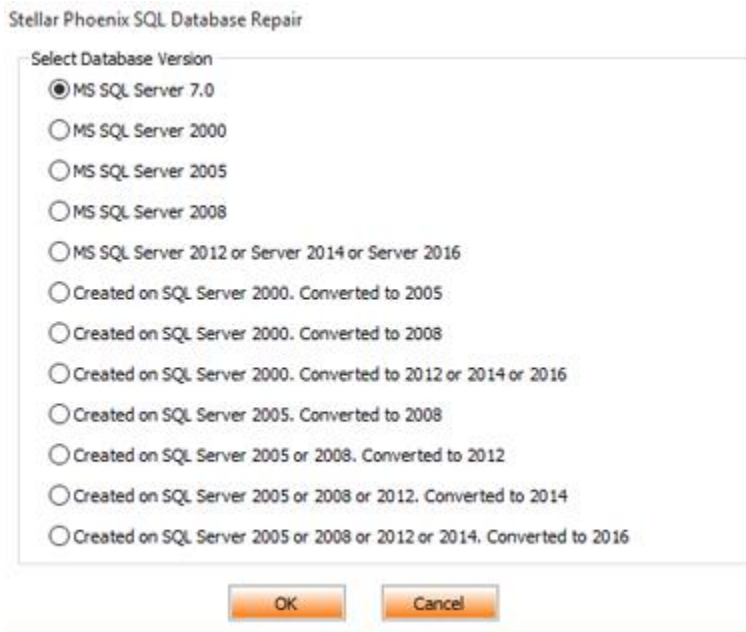


2. Click **Repair** to start the repairing process. Repairing of the selected files is performed by the tool.
3. After the completion of repairing process, a message appears indicating the successful completion of the process.

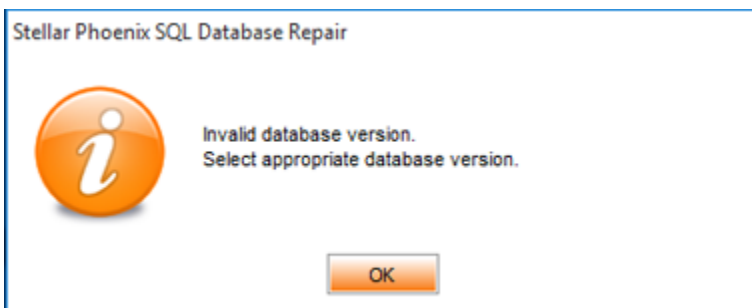


## Note:

- If the selected database file is heavily corrupted and application is unable to detect the database file version, then you can select the database version manually from the dialog box as shown below:



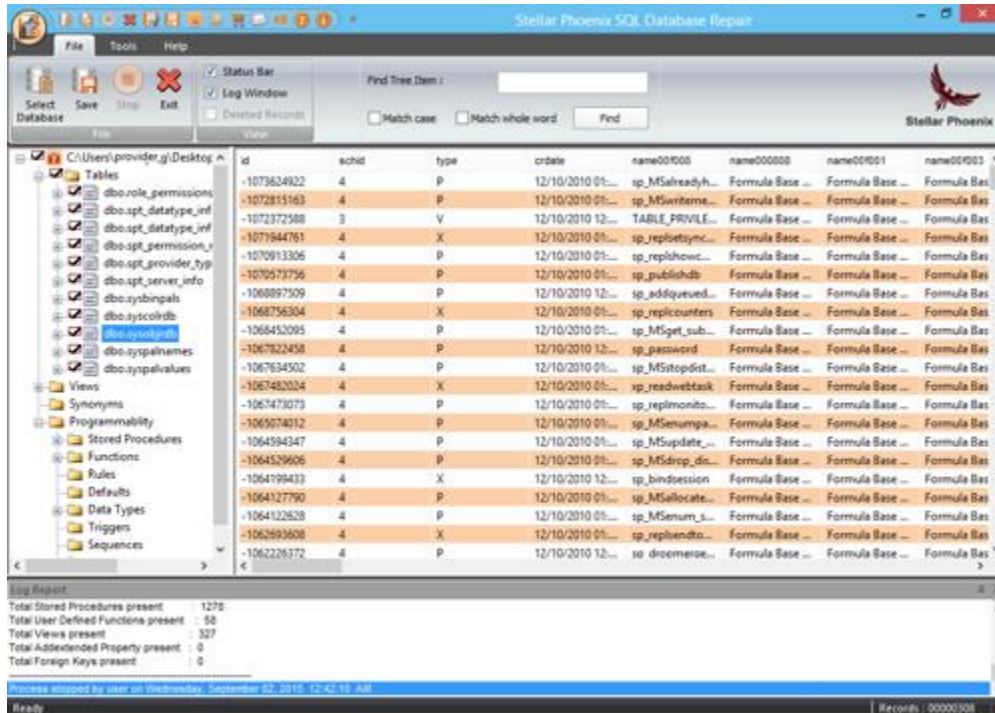
- If in case you select invalid version of the database file, then a message prompts on the screen indicating the inappropriate version of file.



- To proceed to the repairing process, you need to select the appropriate version.

# Preview and Save MDF Files

After you complete the repairing process successfully, **Stellar Phoenix SQL Database Repair** shows preview of corrupted database files. The left pane displays list of items (Table, View, Synonyms, Defaults, Data Types, etc.) in file in a tree like structure, upper right pane displays content of selected items and bottom pane shows message log as shown in the figure given below:



By default, all the checkboxes are selected. To preview content of an item, click on it in the tree view in left pane.

**Note:** The software counts records present in the database after repairing. The time taken in counting depends on the number of records present in the database. Skip counting to speed up repair process.

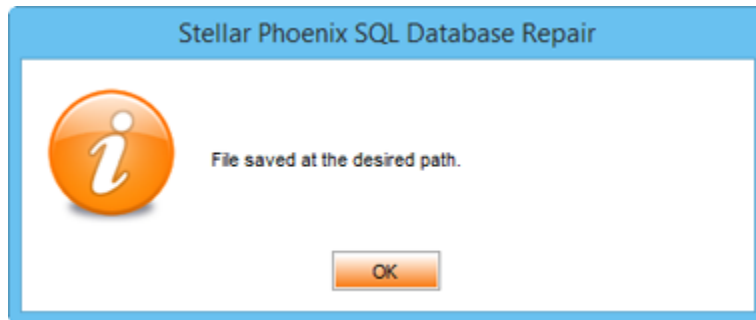
## To save the repaired file to MSSQL database:

- After the repairing process gets completed, click **Save** option from **File menu** or click **Save** button on **Quick Access Toolbar**.
- Select **MSSQL** radio button. A new dialog box appears.
- In the **Stellar Phoenix SQL Database Repair** box, save file by using one of the following:
  - **New Database:** You can select this option, if you want to save the file in a new database.
    - Select **New Database** radio button.

- Enter **Server / Instance Name** and select a destination for saving the repaired MDF file.

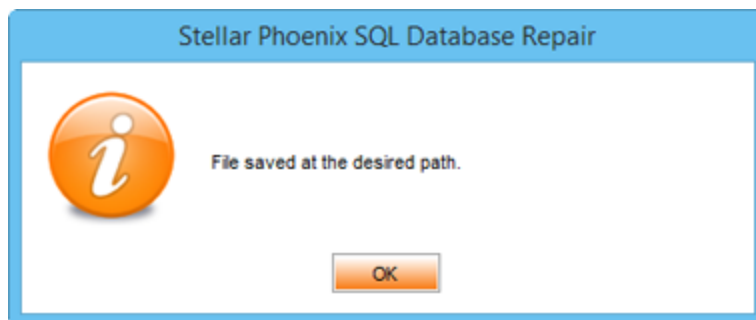


- Click **Connect** to save the repaired MS SQL Database file. A message is displayed after the process is completed successfully.



- **Live Database:** You can select this option if you want the file to be saved in an existing database.
  - Select **Live Database** radio button.
  - Enter **Server / Instance Name**.
  - From the **Existing Database** drop down button select the database into which you want to save the repaired file.

- Click **Connect** to save the repaired MS SQL Database file. A message is displayed after the process is completed successfully.



### To save the repaired file to CSV , HTML or XLS format:

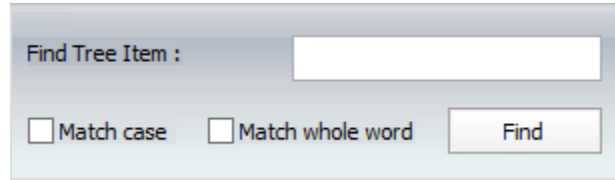
- After the repairing process gets completed, go to **File menu** and select **Save** option. Alternatively, you can also click **Save** button on **Quick Access Toolbar**.
- **Save** dialog box will open. Select the required format.

- Click **Browse** to go to the folder where you want to save the repaired file and click **OK**.
- The file will be saved in the desired format.

**Note:** *Perform repair process on the copy of database and make sure MS SQL Server is running during repair process.*

## Find Specific Item In Tree

**Stellar Phoenix SQL Database Repair** gives option to find particular item(s) in tree view. After completion of repairing process, a search bar along with the preview window appears as shown below:



The image shows a search interface with a text input field labeled "Find Tree Item :". Below the input field are two checkboxes: "Match case" and "Match whole word". To the right of these checkboxes is a "Find" button.

To find a particular item, enter its name in **Find Tree Item** text box and click **Find** button. If that item is present in the database, it is highlighted in tree.

To narrow down the search result, you can select **Match case** or **Match whole word** check box.

# Save Log Report

With **Stellar Phoenix SQL Database Repair**, you can save the Log Report to analyze the repairing process at a later stage. You can view log of the process at the bottom of the user interface. If this pane is not visible, you can enable it by selecting the **Log Window** checkbox in **View** section of **File Menu**.

## To save log report:

- From **Tools Menu**, select **Save Log**.
- In **Save As** dialog box, select the location where you want to save the log report. Click **Save**.

## To clear log report:

- From **Tools Menu**, select **Clear Log**.



# FAQs

## 1. What does the demo version of the software do?

Demo version of the software only shows the preview of MDF files. To repair corrupt MDF file, you need to purchase and register the software.

## 2. Why is it necessary to perform repair process on the copy of database?

**Stellar Phoenix SQL Database Repair** will not be able to run if the database is attached to MS SQL Server.

## 3. Can we repair table(s) in a MDF file selectively?

Yes, you can recover single or multiple tables. Simply select desired table(s) in tree view and start repair process.

## 4. How can Stellar Phoenix SQL Database Repair help me search for the location of MDF file in the computer?

You can search for MDF file in the computer using **Find Database** option of the software. For more details, please refer Select MS SQL database ( MDF ) File topic of the help manual.

## 5. I want to locate an item in the database ( MDF ) file. Is there any way I can do this using the software?

Yes, after repairing the MDF file, the software gives you option to find items in tree view. Use Find option to locate desired item in a table.

## 6. How can we view process log?

You can view log of the process at the bottom of the user interface. If this pane is not visible, you can enable it by selecting the **Log Window** checkbox in **View** section of **File Menu**.

## 7. Can we save process log?

Yes, **Stellar Phoenix SQL Database Repair** gives you option to save log report of the process.

To save log report:

- From **Tools Menu**, select **Save Log**.
- In **Save As** dialog box, select the location where you want to save the log report. Click **Save**.

# Legal Notices

## Copyright

Stellar Phoenix SQL Database Repair software, accompanied user manual and documentation are copyright of Stellar Information Technology Private Limited, with all rights reserved. Under the copyright laws, this user manual cannot be reproduced in any form without the prior written permission of Stellar Information Technology Private Limited. No Patent Liability is assumed, however, with respect to the use of the information contained herein.

Copyright© Stellar Information Technology Private Limited. All rights reserved.

## Disclaimer

The Information contained in this manual, including but not limited to any product specifications, is subject to change without notice.

**STELLAR INFORMATION TECHNOLOGY PRIVATE LIMITED PROVIDES NO WARRANTY WITH REGARD TO THIS MANUAL OR ANY OTHER INFORMATION CONTAINED HEREIN AND HEREBY EXPRESSLY DISCLAIMS ANY IMPLIED WARRANTIES OF MERCHANTABILITY OR FITNESS FOR ANY PARTICULAR PURPOSE WITH REGARD TO ANY OF THE FOREGOING STELLAR INFORMATION TECHNOLOGY PRIVATE LIMITED ASSUMES NO LIABILITY FOR ANY DAMAGES INCURRED DIRECTLY OR INDIRECTLY FROM ANY TECHNICAL OR TYPOGRAPHICAL ERRORS OR OMISSIONS CONTAINED HEREIN OR FOR DISCREPANCIES BETWEEN THE PRODUCT AND THE MANUAL. IN NO EVENT SHALL STELLAR INFORMATION TECHNOLOGY PRIVATE LIMITED, BE LIABLE FOR ANY INCIDENTAL, CONSEQUENTIAL SPECIAL, OR EXEMPLARY DAMAGES, WHETHER BASED ON TORT, CONTRACT OR OTHERWISE, ARISING OUT OF OR IN CONNECTION WITH THIS MANUAL OR ANY OTHER INFORMATION CONTAINED HEREIN OR THE USE THEREOF.**

## Trademarks

Stellar Phoenix SQL Database Repair® is a registered trademark of Stellar Information Technology Private Limited.

Windows XP®, Windows 2003®, Windows Vista®, Windows 7®, Windows 8® and Windows 10® are registered trademarks of Microsoft® Corporation Inc.

All Trademarks Acknowledged.

All other brands and product names are trademarks or registered trademarks of their respective companies.

## License Agreement

**Stellar Phoenix SQL Database Repair**

**Copyright © Stellar Information Technology Private Limited INDIA**

[www.stellarinfo.com](http://www.stellarinfo.com)

All rights reserved.

All product names mentioned herein are the trademarks of their respective owners.

This license applies to the standard-licensed version of Stellar Phoenix SQL Database Repair.

## **Your Agreement to this License**

You should carefully read the following terms and conditions before using, installing or distributing this software, unless you have a different license agreement signed by Stellar Information Technology Private Limited.

If you do not agree to all of the terms and conditions of this License then do not copy, install, distribute or use any copy of Stellar Phoenix SQL Database Repair with which this License is included, you may return the complete package unused without requesting an activation key within 30 days after purchase for a full refund of your payment.

The terms and conditions of this License describe the permitted use and users of each Licensed Copy of Stellar Phoenix SQL Database Repair. For purposes of this License, if you have a valid single-user license, you have the right to use a single Licensed Copy of Stellar Phoenix SQL Database Repair. If you or your organization has a valid multi-user license, then you or your organization has the right to use up to a number of Licensed Copies of Stellar Phoenix SQL Database Repair equal to the number of copies indicated in the documents issued by Stellar when granting the license.

## **Scope of License**

Each Licensed Copy of Stellar Phoenix SQL Database Repair may either be used by a single person or used non-simultaneously by multiple people who use the software personally installed on a single workstation. This is not a concurrent use license.

All rights of any kind in Stellar Phoenix SQL Database Repair, which are not expressly granted in this license, are entirely and exclusively reserved to and by Stellar Information Technology Private Limited. You may not rent, lease, modify, translate, reverse engineer, decompile, disassemble or create derivative works based on Stellar Phoenix SQL Database Repair nor permit anyone else to do so. You may not make access to Stellar Phoenix SQL Database Repair available to others in connection with a service bureau, application service provider or similar business nor permit anyone else to do so.

## **Warranty Disclaimers and Liability Limitations**

Stellar Phoenix SQL Database Repair and all accompanying software, files, data and materials are distributed and provided AS IS and with no warranties of any kind, whether expressed or implied. You acknowledge that good data processing procedure dictates that any program including Stellar Phoenix SQL Database Repair must be thoroughly tested with non-critical data before there is any reliance on it and you hereby assume the entire risk of all use of the copies of Stellar Phoenix SQL Database Repair covered by this License. This disclaimer of warranty constitutes an essential part of this License. In addition, in no event does Stellar authorize you or anyone else to use Stellar Phoenix SQL Database Repair in applications or systems where its failure to perform can reasonably be expected to result in a significant physical injury or in loss of life. Any such use is entirely at your own risk and you agree to hold Stellar harmless from any and all claims or losses relating to such unauthorized use.

In no event shall Stellar Information Technology Private Limited or its suppliers be liable for any special, incidental, indirect, or consequential damages whatsoever (including, without limitation, damages for loss of business profits, business interruption, loss of business information, or any other pecuniary loss)

arising out of the use of or inability to use the software product or the provision of or failure to provide support services, even if Stellar Information Technology Private Limited has been advised of the possibility of such damages. In any case, Stellar Information Technology Private Limited's entire liability under any provision shall be limited to the amount actually paid by you for the software product.

## **General**

This License is the complete statement of the agreement between the parties on the subject matter and merges and supersedes all other or prior understandings, purchase orders, agreements and arrangements. This License shall be governed by the laws of the State of Delhi, India. Exclusive jurisdiction and venue for all matters relating to this License shall be in courts and fora located in the State of Delhi, India and you consent to such jurisdiction and venue. There are no third party beneficiaries of any promises, obligations or representations made by Stellar herein. Any waiver by Stellar of any violation of this License by you shall not constitute nor contribute to a waiver by Stellar of any other or future violation of the same provision or any other provision of this License.

Copyright© Stellar Information Technology Private Limited. All rights reserved.

# About Stellar

Stellar Information Technology Private Limited is a trusted name in the field of Data Recovery and Data Protection Software for more than a decade.

We provide the widest range of Data Recovery Products. Our range includes Data Recovery Software for almost all Operating Systems and File Systems.

## Product line:

### Data Recovery

A widest range of data recovery software that helps you recover your valued data lost after accidental format, virus problems, software malfunction, file/directory deletion, or even sabotage!. More Info >>

### File Recovery

The most comprehensive range of file undeletes and unease software for Windows and MS office repair tools. More Info >>

### Database Repair

A wide range of database repair software to help you repair corrupted Microsoft SQL Server database, Microsoft Access database, MySQL database, Oracle database, SharePoint Database, SQL Anywhere Server and Interface database. More Info >>

### Email Recovery

A wide range of mail recovery, mail repair and mail conversion applications for MS Outlook, MS Outlook Express and MS Exchange useful in instances of data loss due to damages and corruption of Email. More Info >>

### Data Protection

A wide range of Prevent Data Loss, Data backup and Hard Drive Monitoring Applications to ensure complete data protection against hard drive crash. More Info >>

### Data Sanitization

Data cleanup and file eraser utility can delete selected folders, groups of files, entire logical drives, System Traces & Internet traces. Once the data have been removed using Stellar Wipe - Data File eraser utility, it is beyond recovery limits of any Data Recovery Software or utility. More Info >>

For more information about us, please visit [www.stellarinfo.com](http://www.stellarinfo.com)