

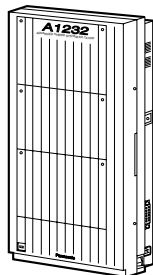
Panasonic Telephone Systems

Panasonic KX-TA1232



www.voicesonic.com

Phone: 877-289-2829



Advanced Hybrid System Programming Guide

Panasonic KX-TA1232, KXTA1232, TA1232, KX-TA123260, KX-TA123270, KX-TA123280, KX-TA123291, KX-TA123293, KX-T77, KX-T73



Please read this manual before using the Advanced Hybrid System.

Introduction

About this Programming Guide

This Programming Guide is designed to serve as an overall system programming reference for the Panasonic Advanced Hybrid System, KX-TA1232.

This manual contains the following sections:

Section 1, General Programming Instructions

Provides information about what you need or what you should do before/during programming.

Section 2, General Programming

Provides details about the general system programmings.

Section 3, Default Values

Provides the list of default values for all programmings.

Section 4, Index

Provides the important words and phrases to help you access the required information easily.

About the other manuals

Along with this Programming Guide, the following manuals are available to help you install, know the available features and use the KX-TA1232 system:

Installation Manual

Provides instructions for installing the hardware and optional equipment.

Features Guide

Provides information about the system features.

User Manual

Provides operating instructions for the end users using proprietary telephones, single line telephones, consoles.

Table of Contents

1	General Programming Instructions	7
1.1	General Programming Instructions	8
1.2	Using Proprietary Telephones.....	9
1.3	Programming Methods	12
1.4	Entering Characters.....	14
1.5	User Programming Mode	16
1.6	Programming Example.....	17
2	General Programming	19
2.1	Manager Programming	20
[000]	Date and Time Set	20
[001]	System Speed Dialing Number Set	22
[003]	Extension Number Set	24
[004]	Extension Name Set.....	26
[005]	Flexible CO Button Assignment.....	27
[006]	Operator / Manager Extension Assignment.....	29
[007]	DSS Console Port and Paired Telephone Assignment	31
[008]	Absent Messages	33
[009]	Quick Dial Number Set	35
[014]	VM Name Set	36
[017]	DISA User Codes	37
2.2	System Programming.....	39
[100]	Flexible Numbering	39
[101]	Day / Night Service Switching Mode.....	43
[102]	Day / Night Service Starting Time	44
[103]	Automatic Access Outside Line Assignment	46
[105]	Account Codes.....	47
[106]	Station Hunting Type.....	49
[107]	System Password	51
[108]	Automatic Hold by CO / DSS Button	52
[109]	Expansion Unit Type	53
[110]	Caller ID Code Set.....	54
[111]	Caller ID Name Set.....	56
[113]	VM Status DTMF Set.....	57
[114]	VM Command DTMF Set.....	59
[116]	ROM Version Display	61
[117]	Voice Mail Number Assignment	62
[118]	Voice Mail Extension Number Assignment	63
[119]	Voice Mail Extension Group Assignment	65
[120]	User Password	66
[121]	Walking COS Password	68
[124]	Phantom Extension Number Assignment	69
[125]	Area Code Assignment	71
[126]	Caller ID Modification for Local Call.....	72
[127]	Caller ID Modification for Long Distance Call.....	74
[150]	Lunch Service Starting / Ending Time	75

[151]	Break Service Starting / Ending Time	77
2.3	Timer Programming	79
[200]	Hold Recall Time	79
[201]	Transfer Recall Time	80
[202]	Call Forwarding — No Answer Time	81
[203]	Intercept Time	82
[204]	Pickup Dial Waiting Time	83
[205]	Extension-to-Outside Line Call Duration Time	84
[206]	Outside-to-Outside Line Call Duration Time	85
[207]	First Digit Time	86
[208]	Inter Digit Time	87
[211]	Dial Start Time	88
[212]	Call Duration Count Start Time	89
[213]	DISA Delayed Answer Time	90
[214]	DISA Prolong Time	91
[215]	Outgoing Message Time	92
[216]	Message Waiting Ring Interval Time	94
[217]	Timed Reminder Alarm Ring Time	95
[218]	DISA AA Wait Time	96
[219]	Call Park Recall Time	97
[221]	Caller ID Call Waiting Time	98
2.4	TRS Programming	99
[300]	TRS Override for System Speed Dialing	99
[301-305]	TRS Denied Code Entry for Levels 2 through 6	100
[306-310]	TRS Excepted Code Entry for Levels 2 through 6	102
[311]	Special Carrier Access Codes	104
[332]	Extra Entry Table Selection	105
[333]	TRS Entry Code Assignment for Extra Table	106
[334]	Emergency Dial Number Set	107
2.5	Outside Line Programming	108
[400]	Outside Line Connection Assignment	108
[401]	Outside Line Group Assignment	109
[402]	Dial Mode Selection	111
[403]	Pulse Speed Selection	113
[404]	DTMF Time	114
[405]	CPC Signal Detection Incoming Set	115
[406]	Caller ID Assignment	116
[407-408]	DIL 1:1 Extension — Day / Night	117
[409-410]	Intercept Extension — Day / Night	119
[411]	Host PBX Access Codes	121
[412]	Pause Time	123
[413]	Flash Time	124
[414]	Disconnect Time	126
[415]	CPC Signal Detection Outgoing Set	127
[417]	Outside Line Name Assignment	129
[440]	Line Hunting Sequence	131
[457-458]	DIL 1:1 — Lunch / Break Group	132
[462]	Caller ID Call Waiting Assignment	134
[463-464]	DIL 1:1 Extension — Lunch / Break	135

2.6 COS Programming.....	137
[500]-[501] Toll Restriction Level — Day / Night	137
[502] Extension-to-Outside Line Call Duration Limit.....	139
[503] Call Transfer to Outside Line	141
[504] Call Forwarding to Outside Line	142
[505] Executive Busy Override.....	143
[506] Executive Busy Override Deny	144
[507] Do Not Disturb Override	145
[508] Account Code Entry Mode	146
[510] Night Service Access.....	148
[511] PT Programming Level	149
2.7 Extension Programming.....	151
[601] Class of Service	151
[602] Extension Group Assignment	153
[603-604] DIL 1:N Extension and Delayed Ringing — Day / Night	155
[605-606] Outgoing Permitted Outside Line Assignment — Day / Night	157
[607-608] Doorphone Ringing Assignment — Day / Night	159
[609] Voice Mail Access Codes.....	160
[610] Live Call Screening Recording Mode Assignment	162
[619] Extension Call Forwarding — No Answer Time	163
[620] Lunch / Break Group Assignment	164
[621] Cordless PT Extension Port.....	165
[624] Common Area Call Log Check Assignment	167
[625] Room Monitor Assignment	168
2.8 Resource Programming	169
[800] SMDR Incoming / Outgoing Call Log Printout	169
[801] SMDR Format	171
[802] System Data Printout	172
[803] Music Source Use.....	174
[804] External Pager BGM	175
[805] External Pager Confirmation Tone.....	176
[806] Serial Interface (RS-232C) Parameters	177
[809] DISA Security Type	179
[810] DISA Tone Detection	180
[812] DISA DTMF Repeat.....	181
[813] Floating Number Assignment.....	182
[815] DISA Built-in Auto Attendant.....	184
[818] Doorphone Ringing / Tone Pattern Selection.....	185
[819] Doorphone Access Tone Selection	187
[820] Doorphone Ringing Time.....	188
[821] Doorphone Ring/Chime Selection.....	189
[822] Doorphone Chime Assignment	191
[823] Doorphone Chime Pattern Selection	192
2.9 Optional Programming.....	194
[990] System Additional Information	194
[991] COS Additional Information	204
3 Default Values.....	209

4	Index.....	219
----------	-------------------	------------

Section 1

General Programming Instructions

1.1 General Programming Instructions

Default Setting

This system has a default factory setting. If any of the programming needs to be changed, you will find the necessary information in the Features Guide. This makes the system very simple to install and customize as required by the customer. Any required changes can be written in "Programming Tables".

Required Telephone Set

One of the following telephone sets with display is required for System Programming:

- Proprietary Telephone (PT):
KX-T7135, KX-T7130, KX-T7030

Extensions Used for Programming

Connect one of the above-mentioned telephone sets to either of the following:

- Jack number 1
- Jack programmed as a manager extension

To assign the manager extension, see Section 2.1 Manager Programming [006] Operator / Manager Extension Assignment.

User Programming (Manager Programming)

Manager programming items are allowed for any display proprietary telephone user in the system. See Section 1.5 User Programming Mode.

1.2 Using Proprietary Telephones

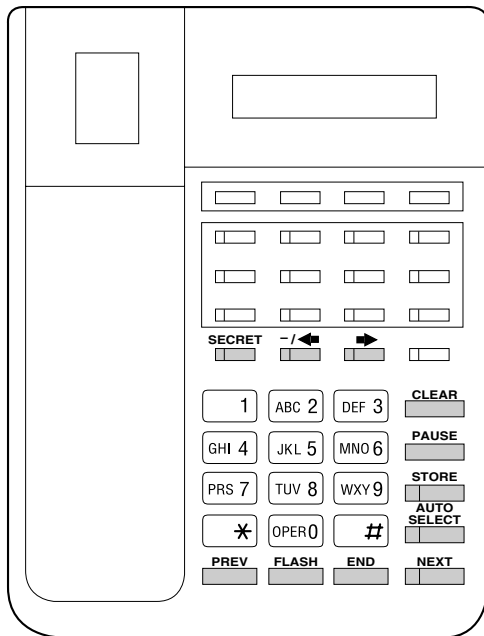
Using the Overlay

A programming overlay is packed with the telephone at the factory. This overlay should be used at all times while in programming mode since the functions of the telephone keys change while in programming mode as follows: (The original functions are in parentheses.)

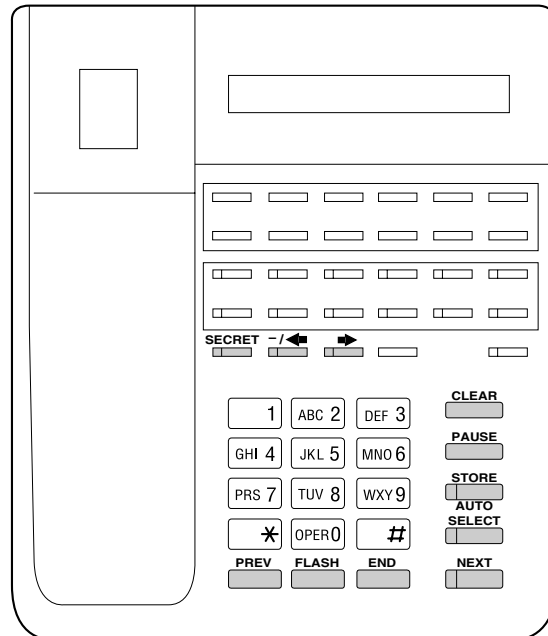
During Normal Operation	During Programming
(PAUSE)	PAUSE
(SP-PHONE)	NEXT
(REDIAL)	PREV (PREVIOUS)
(AUTO ANSWER / MUTE)	SELECT
(FLASH)	FLASH
(TRANSFER)	CLEAR
(FWD/DND)	➡
(CONF)	– / ⬅
(INTERCOM)	SECRET
(AUTO DIAL / STORE)	STORE
(HOLD)	END

Location of Controls with the Overlay

The pictures below show the functions of the buttons of the KX-T7135, KX-T7130, and KX-T7030 while in programming mode.



KX-T7030



KX-T7130 / KX-T7135

Viewing the Display

The display gives you helpful information, such as what you should do now, what you have done, etc.

The KX-T7135, KX-T7130, and the KX-T7030 utilize one information line for programming. The display capacity is 16 digits. If your entry exceeds the capacity, you can shift the display by pressing **→** or **←** button.

Before entering the programming mode

Before entering programming mode, confirm that:

- Your telephone is on-hook.
- No calls are on hold at your telephone.

Entering the programming mode

Press **PAUSE + * + #** and enter your **System Password (default=1234)**.

- The display shows the Initial Message: **SYS-PGM NO? →**

Note

- If nothing is entered in five seconds after the **PAUSE** button is pressed, it is canceled.
- The System Password entered is not shown on the display. The System Password can be changed by System Programming. Refer to Section [107] System Password.
- During the programming mode, your extension is treated as a busy extension.
- Only one proprietary telephone can be in programming mode at any one time.

1.3 Programming Methods

Advancing to the next stage

When "SYS-PGM NO? →" is displayed, you can select one of the following:

- To go to program [000], press the **NEXT** button.
- To go to another program, enter the 3-digit program address.

Storing your data

Press **STORE** to store your data.

- The **STORE** indicator lights red and a confirmation tone is emitted.

* Confirmation tone (one beep)

After pressing **STORE**, you will hear a beep. This informs you that storage is completed.

* Confirmation tone (two beeps)

This informs the user that the parameter has already been stored.

* Alarm tone (three beeps)

If you hear this alarm, your entry is not valid.

Making another selection within the same program address

- To make the next higher selection, press **NEXT**.
- To make the previous selection, press **PREV**.
- To make a specific selection, press **SELECT** and then enter the number.

Going to another program address

a) While displaying the program address and title:

- To go to the next larger program address:
Press **➡** or **MESSAGE** button.
- To go to the next smaller program address:
Press **⬅** or **SECRET (INTERCOM)** button.

b) While programming:

- To go to a specific program address:
Press **END**, then enter the Program Address.

Note

The following programming instructions assume that you have already entered the programming mode and that you will use Method (b).

Confirming the entries

You may review the stored programming without making any changes.

Going back to the operation mode

Two ways are available to go back to the operation mode:

- a)** Lift the handset while in programming mode.
- b)** When the Initial Message: SYS-PGM NO? is displayed, press the **PAUSE** button. (To display the Initial Message, press **END**.)

1.4 Entering Characters

Entering Characters

You can enter characters to store names or messages in the following programs by using the dialing key pad and the buttons.

[004] Extension Name Set
 [008] Absent Messages
 [014] VM Name Set
 [111] Caller ID Name Set
 [417] Outside Line Name Assignment
 See the Combination Table below.

Combination Table

Pressing SELECT (Times)	0	1	2	3	4	5	6	7	8
Keys									
1	1	Q	q	Z	z	!	?		
2	2	A	a	B	b	C	c		
3	3	D	d	E	e	F	f		
4	4	G	g	H	h	I	i		
5	5	J	j	K	k	L	l		
6	6	M	m	N	n	O	o		
7	7	P	p	Q	q	R	r	S	s
8	8	T	t	U	u	V	v		
9	9	W	w	X	x	Y	y	Z	z
0	0		.	,	'	:	;		
*	*	/	+	-	=	<	>		
#	#	\$	%	&	@	()		

Note

- The alphabetical characters correspond to the letters shown on the twelve dialing keys on the proprietary telephone. (except for Q, q, Z, z and all other symbols)

Please see the following example which shows how to select a desired character.

For example, to select the letter "M":

a) Press **6**. ("M" belongs to "6".)

b) Press the **SELECT** button once.

- Pressing the **SELECT** button an appropriate number of times gives you the desired letter. Pressing **SELECT** twice gives the letter "m", pressing three times gives "N", and so on.

Example of entering characters: to enter "Mike":

	The display shows:
1. Enter 6 .	6
2. Press SELECT .	M
3. Enter 4 .	M4
4. Press SELECT six times.	Mi
5. Enter 5 .	Mi5
6. Press SELECT four times.	Mik
7. Enter 3 .	Mik3
8. Press SELECT four times.	Mike

Note

- To erase all the letters, press **CLEAR**.
- To erase the last letter, press **←**.

1.5 User Programming Mode

User Programming Mode

Some programming items are accessible by any display proprietary telephone user in the system.

The programming items are listed below:

- [000] Date and Time Set
- [001] System Speed Dialing Number Set
- [003] Extension Number Set
- [004] Extension Name Set
- [005] Flexible CO Button Assignment
- [006] Operator / Manager Extension Assignment
- [007] DSS Console Port and Paired Telephone Assignment
- [008] Absent Messages
- [009] Quick Dial Number Set
- [014] VM Name Set
- [017] DISA User Codes

Entering the user programming mode

You can access these programs by entering the User Programming Mode as follows:

Before entering the mode, confirm that:

- Your telephone is on-hook.
- No calls are on hold at your telephone

Press **PAUSE + * + *** and enter the **User Password**
(default: 1234)

After entering the mode, perform the same programming steps as the system programming steps in each program address.

Note

- If nothing is entered in five seconds after the **PAUSE** button is pressed, it is canceled.
- The User Password is not shown on the display. The password can be changed by system programming. Refer to Section [120] User Password.
- During the programming mode, your extension is treated as a busy extension.
- Only one proprietary telephone can be in programming mode at any one time.

1.6 Programming Example

Programming Example

The following programming instructions assume that you have already entered the programming mode and that you will employ method (b) of "Going to another program address" in Section 1.3 Programming Methods.

Example: Program [001] System Speed Dialing Number Set.

Sample of Description	Explanation
<p>[001]⁽¹⁾ System Speed Dialing Number Set⁽²⁾</p> <p>Description⁽³⁾</p> <p>Used to program the System Speed Dial numbers. These numbers are available to all extension users. There are 500 numbers available from 000 through 499.</p> <p>Selection⁽⁴⁾</p> <ul style="list-style-type: none"> • Speed dial number: 000 through 499 • Telephone number: 24 digits (max.) <p>Default⁽⁵⁾</p> <p>All speed dial numbers - Not stored</p> <p>Programming⁽⁶⁾</p> <ol style="list-style-type: none"> 1. Enter 001.⁽⁷⁾ Display: 001 SYS SPD DIAL⁽⁸⁾ 2. Press NEXT.⁽⁹⁾ Display: SPD Code?→⁽¹⁰⁾ 3. Enter a speed dial number. To enter speed dial number 000, you can also press NEXT. Display example: 000:Not Stored⁽¹¹⁾ 4. Enter a telephone number.⁽¹²⁾ To delete the current entry, press CLEAR.⁽¹³⁾ To change the current entry, press CLEAR and the new number. 5. Press STORE.⁽¹⁴⁾ 	<p>(1) Program address: This address is printed at the top of every page to allow you to quickly find the desired program.</p> <p>(2) Program title.</p> <p>(3) Provides a more detailed description of the program.</p> <p>(4) Shows you choices that you can assign.</p> <p>(5) Shows you the default (factory setting).</p> <p>(6) Shows you programming procedures step by step.</p> <ul style="list-style-type: none"> • While programming, use the overlay. • Before starting to program, enter the programming mode. (See "Entering the programming mode" in section 1.2 "Using Proprietary Telephones".) <p>(7) Enter the program address.</p> <p>(8) The display shows the program title. If your telephone has soft buttons, the lower line shows the functions that are currently assigned to them.</p> <p>(9) Press the NEXT shown on the overlay.</p> <p>(10) The message line advises you to enter a speed dial number.</p> <p>(11) If the telephone number has already been stored, the number is displayed.</p> <p>(12) Enter the telephone number that you want to store. Your entry is displayed as you enter the digits.</p> <p>(13) Pressing CLEAR erases the whole entry.</p> <p>(14) Your entry is now stored.</p> <p>The indicator lights red and a confirmation tone lets you know that storage is complete.</p>

Sample of Description	Explanation
<p>6. To program another speed dial number, press NEXT or PREV, or SELECT and the desired speed dial number.⁽¹⁵⁾</p> <p>7. Repeat steps 4 through 6.⁽¹⁶⁾</p> <p>8. Press END.⁽¹⁷⁾</p> <p>Conditions⁽¹⁸⁾</p> <ul style="list-style-type: none"> • Each speed dial number has a maximum of 24 digits. The valid characters are 0 through 9, the * and # keys, and the FLASH, PAUSE, SECRET and – (hyphen) buttons. • • • <p>Features Guide References⁽¹⁹⁾</p> <p>System Speed Dialing</p>	<p>(15) Select the best way for you to store another speed dial number. Pressing the NEXT / PREV allows you to select the next higher / lower speed dial number. You can also keep pressing them until the desired one is displayed. If you press SELECT and the desired speed dial number, the selected code is displayed.</p> <p>(16) You can continue to program another entry.</p> <p>(17) After you have stored all your entries, finish this program by pressing END. After pressing END you can go to any program address you desire. You can return to the Initial Message mode any time by pressing END.</p> <p>(18) Tells you what you should notice or consider when doing the programming.</p> <p>(19) Lists all of the features related to the programming. These features are described in Section 3.</p>

Programming Structure

Program Address	Programming Group	Description
[0XX]	Manager Programming	These programs may be accessed by the system manager of the customer to meet frequent changes requested by the customer.
[1XX]	System Programming	Entire system programming.
[2XX]	Timer Programming	Flexible system timer setting.
[3XX]	TRS Programming	Assignment of Toll Restriction.
[4XX]	Outside Line Programming	Setting of outside line and outside line group values.
[5XX]	COS Programming	Setting of Class of Service (COS).
[6XX]	Extension Programming	Setting of extension values.
[8XX]	Resource Programming	Assignment of customer-supplied peripherals connected to the system.
[9XX]	Option Programming	Used to answer the user's requirements or troubles, if needed.

Section 2

General Programming

2.1 Manager Programming

[000] Date and Time Set

Description

Sets the current date and time. A 12 hour format or 24 hour format can be selected.

Selection

- Year: **00 through 99**
- Month: **Jan. through Dec.**
- Day: **1 through 31**
- Day of the week: **SUN / MON / TUE / WED / THU / FRI / SAT**
- Hour: **1 through 12**
- Minute: **00 through 59**
- **AM / PM**
- Hour format: **12 or 24**

Default

'01 Jan. 1 MON 12:00 AM 12

Programming

1. Enter **000**.
Display: 000 DATE / TIME
2. Press **NEXT**.
Display example: '01 Jan. 1 MON 12:00 AM 12
3. Enter the **year**.
To change the current entry, press **CLEAR** and enter the new year.
4. Press **➡**.
5. Keep pressing **SELECT** until the desired month is displayed.
6. Press **➡**.
7. Enter the **day**.
To change the current entry, press **CLEAR** and enter the new day.
8. Press **➡**.
9. Keep pressing **SELECT** until the desired day of the week is displayed.
10. Press **STORE**.
11. Press **NEXT**.

Display example: 12:00 PM 24

12.Enter the **hour**.

To change the current entry, press **CLEAR** and enter the new hour.

13.Press **➡**.

14.Enter the **minute**.

To change the current entry, press **CLEAR** and enter the new minute.

15.Press **➡**.

16.Press **SELECT** for AM or PM.

17.Press **➡**.

18.Press **SELECT** for 12 or 24 (hour format).

19.Press **STORE**.

20.Press **END**.

Conditions

- After changing an entry, you can press **STORE**. You do not have to perform the rest of the steps.
- To return to a previous field, press **⬅** in steps 4 through 9 and steps 13 through 18.
- If you hear an alarm after pressing **STORE**, check that the date is valid.
- The clock starts immediately after the **STORE** button is pressed.
- You cannot leave an entry empty.
- Program [990] System Additional Information, Area 05 - Bit 1 is used to enable the automatic time adjustment by Caller ID information once a day.

Features Guide References

Display, in Idle

[001] System Speed Dialing Number Set

Description

Used to program the System Speed Dial numbers. These numbers are available to all extension users. There are 500 numbers available from 000 to 499.

Selection

- Speed dial number: **000 through 499**
- Telephone number: **24 digits (max.)**

Default

All speed dial numbers - Not stored

Programming

1. Enter **001**.
Display: 001 SYS SPD DIAL
2. Press **NEXT**.
Display: SPD Code?→
3. Enter a **speed dial number**.
To enter speed dial number 000, you can also press **NEXT**.
Display example: 000:Not Stored
4. Enter a **telephone number**.
To delete the current entry, press **CLEAR**.
To change the current entry, press **CLEAR** and enter the new number.
5. Press **STORE**.
6. To program another speed dial number, press **NEXT** or **PREV**, or **SELECT** and the desired speed dial number.
7. Repeat steps 4 through 6.
8. Press **END**.



Conditions

- Each speed dial number has a maximum of 24 digits. The valid characters are **0 through 9**, the ***** and **#** keys, and the **FLASH**, **PAUSE**, **SECRET** and **— (hyphen)** buttons.
 - To store a flash signal, press **FLASH**.
- Note:**
The stored flash will only be effective during a call. (Refer to Section "External Feature Access" in the Features Guide.)
- To store a hyphen, press the **"—"** button.

-To store a pause, press **PAUSE**. (Refer to Section "Pause Insertion, Automatic" in the Features Guide.)

-To store a feature number to convert pulse signals to DTMF (Dual Tone Multi-Frequency) signals, press the * and # keys. (Refer to Section "Pulse to Tone Conversion" in the Features Guide.)

-To prevent displaying of all or part of the number, press **SECRET** before and after the secret number, or your entry will not be stored. (Refer to Section "Secret Dialing" in the Features Guide.)

- If you are storing an external number, include the line access code (default: 9, 81 through 88) before the number. When dialing, a pause is automatically inserted after the code.
- If you are storing an account code, enter the account code before the line access code. (Refer to Section "Account Code Entry" in the Features Guide.)
- A number consisting of 25 digits or more can be stored by storing it in two speed dial numbers. The line access code should be stored in the first speed dial number.
- To access another speed dial number in steps 3 through 6, press **SELECT** and start with step 3.
- To display parts of the number which have scrolled off the display, press  or .

Features Guide References

System Speed Dialing

[003] Extension Number Set

Description

Assigns an extension number to each extension.

Note

This programming should be performed before you connect a Panasonic Voice Processing System (VPS) because the VPS can create mailboxes automatically based on your extension plan (extension number set).

Selection

- Jack number: **01 through 32**
- Extension Number: **2 through 4 digits**

Default

Jack 01 through 32 = 101 through 132

Programming

1. Enter **003**.
Display: 003 EXT NUMBER
2. Press **NEXT**.
Display: Jack NO?→
3. Enter a **jack number**.
To enter jack number 01, you can also press **NEXT**.
Display: #01:EXT101
4. Enter an **extension number**.
To change the current entry, press **CLEAR** and enter the new number.
5. Press **STORE**.
6. To program another jack, press **NEXT** or **PREV**, or **SELECT** and the desired **jack number**.
7. Repeat steps 4 through 6.
8. Press **END**.

Conditions

- There is a maximum of 32 extension numbers. Each extension number can be two, three, or four digits, consisting of **0 through 9**. The ***** and **#** keys cannot be used.
- An extension number is invalid if the first or second digits do not match with the program "[100] Flexible Numbering, (01) - (16) 1st through 16th hundred extension blocks" setting. If one digit is assigned as the leading digit, some extensions have two digits and

some have three digits. If two digits are assigned, some have three digits and some have four digits.

- A double entry or incompatible entry is invalid including the program [118] Voice Mail Extension Number Assignment, [124] Phantom Extension Number Assignment, [813] Floating Number Assignment. Valid entry examples are: 10 and 11; 10 and 110. Invalid entry example is: 10 and 106.
- Program [004] Extension Name Set is used to name the extension numbers.

Features Guide References

Display, Call Information

Flexible Numbering

Intercom Calling

[004] Extension Name Set

Description

Assigns names to the extension numbers programmed in program [003] Extension Number Set.

Selection

- Jack number: **01 through 32**
- Name: **10 characters (max.)**

Default

All jacks — Not stored

Programming

1. Enter **004**.
Display: 004 EXT NAME SET
2. Press **NEXT**.
Display: Jack NO?→
3. Enter a **jack number**.
To enter jack number 01, you can also press **NEXT**.
Display: #01:Not Stored
4. Enter a **name**.
For entering characters, see Section 1.4 Entering Characters.
To delete the current entry, press **CLEAR**.
To change the current entry, press **CLEAR** and enter the new name.
5. Press **STORE**.
6. To program another jack, press **NEXT** or **PREV**, or **SELECT** and the desired **jack number**.
7. Repeat steps 4 through 6.
8. Press **END**.

Conditions

- There is a maximum of 32 names. Each name has a maximum of 10 characters.
- Program [003] Extension Number Set is used to assign extension numbers.

Features Guide References

Display, Call Information
Intercom Calling

[005] Flexible CO Button Assignment

Description

Used to determine the use of the flexible CO buttons on proprietary telephones from a centralized telephone.

Selection

- Jack number: **01 through 32**
- Button Code (plus parameter, if required):

Button Code	Parameter
0 (Single-CO)	01 through 12 (Outside line number)
1 (DSS)	2 to 4 digits (Extension number)
2 (One-Touch)	16 digits max. (Telephone number)
3 (Message Waiting)	2 to 4 digits (Another / Phantom Extension number) or None
4 (FWD/DND)	None
5 (Save)	None
6 (Account)	None
70 (Conference)	None
71 (Log-In/Log-Out)	None
72 (Phantom)	2 to 4 digits (Phantom extension number)
73 (Night)	None
8 (Voice Mail Transfer)	2 to 4 digits (Voice Mail Extension number)
90 (Two-Way Record)*	2 to 4 digits (Voice Mail Extension number)
91 (Two-Way Transfer)*	2 to 4 digits (Voice Mail Extension number)
92 (Live Call Screening)*	None
93 (Live Call Screening Cancel)*	None
94 (Caller ID Indication — Personal)	None
95 (Caller ID Selection — Personal)	None
96 (Caller ID Indication — Common)	None
97 (Caller ID Selection — Common)	None
* (Loop-CO)	None
# (Group-CO)	1 through 8 (Outside line group number)

- * Available when the KX-TA1232 is connected to a Proprietary Telephone capable Panasonic Voice Processing System (one that supports DPT Integration; e.g., KX-TVS50).

Default

All jacks — CO buttons 1 through 12 = Single-CO 01 through 12

Programming

1. Enter **005**.
Display: 005 FLEXIBLE CO
2. Press **NEXT**.
Display: Jack NO? →
3. Enter a **jack number**.
To enter jack number 01, you can also press **NEXT**.
Display: PT-PGM Mode
4. Press the **CO button** which is changed to another button.
The display shows the contents pre-assigned to the button.
Display example: CO-01
5. Enter a **button code** (plus **parameter**, if required).
To change the parameter, press **CLEAR** and enter the new parameter.
6. Press **STORE**.
7. To program another CO button of the same jack, repeat steps 4 through 6.
To program another jack, press **SELECT** and repeat steps 3 through 6.
8. Press **END**.

Canceling

1. Perform the same procedures as steps 1 through 4 above.
2. Enter **2**.
3. Press **STORE**.
4. Press **END**.

Conditions

- A centralized telephone is a telephone connected to jack 01 or a jack programmed as a manager extension in program [006] Operator / Manager Extension Assignment.

Features Guide References

Button, Flexible

Buttons on Proprietary Telephones

[006] Operator / Manager Extension Assignment

Description

Assigns the jack number for a manager and/or operators. The manager extension can perform System Programming and manager services. The operators have the ability to perform operator services.

Selection

- **OPE-1** (operator 1) / **OPE-2** (operator 2) / **MNGER** (manager)
- Jack number: **01 through 32**

Default

Operator 1 — Jack 01;

Operator 2 and Manager — Not stored

Programming

1. Enter **006**.

Display: 006 OP-1, 2, MGR

2. Press **NEXT** to program operator 1.

Display: OPE-1:Jack01

To program another item, you can also keep pressing **NEXT** or **PREV** until the desired one is displayed.

3. Enter a **jack number**.

To assign no operator or manager, press **CLEAR**.

To change the current entry, press **CLEAR** and enter the new jack number.

4. Press **STORE**.

5. To program another item, press **NEXT** or **PREV**.

6. Repeat steps 3 through 5.

7. Press **END**.

Conditions

- Up to two operators and a manager can be programmed.
- The manager cannot be assigned the jack number of the DSS Console Port set in program [007] "DSS Console Port and Paired Telephone Assignment".
- If there is no operator or manager, press **CLEAR** in step 3.

Features Guide References

Manager Extension

Operator

[007] DSS Console Port and Paired Telephone Assignment

Description

Assigns the jack numbers for the DSS Console and the paired extension.

Selection

- DSS Console number: **1 through 4**
- Jack number for DSS Console: **02 through 32**
- Jack number for paired extension: **01 through 32**

Default

All DSS Consoles — Not stored

Programming

1. Enter **007**.
Display: 007 DSS CONSOLE
2. Press **NEXT**.
Display: DSS NO?→
3. Enter a **DSS Console number**.
To enter DSS Console number 1, you can also press **NEXT**.
Display example: DSS-1:# P:#
4. Enter a **jack number** for the console.
To delete the current entry, press **CLEAR**.
To change the current entry, press **CLEAR** and enter the new jack number.
5. Press **➡**.
6. Enter a **jack number** for the paired extension.
To change the current entry, press **CLEAR** and enter the new jack number.
Display example: DSS-1:#02 P:#03
7. Press **STORE**.
8. To program another DSS Console, press **NEXT** or **PREV**, or **SELECT** and the desired **DSS Console number**.
9. Repeat steps 4 through 8.
10. Press **END**.

Conditions

- The jack number for the Console and that for the paired extension must be entered together.
- Multiple DSS Consoles cannot be assigned to the same DSS Console jack.

- Multiple DSS Consoles can be paired with the same proprietary telephone jack.
- A DSS Console jack cannot be assigned the jack 01 and the jack number of Manager set in program [006] Operator / Manager Extension Assignment.
- If all incoming outside calls are set to ring at the operator extension telephone in program [407-408] DIL 1:1 Extension — Day / Night, assigning a DSS Console to the operator extension makes the operator's job much easier.
- If a single line telephone is assigned as the pair extension, the paired DSS Console will not function.

Features Guide References

DSS Console

[008] Absent Messages

Description

Used to program the absent messages. An absent message, if set by the station user, is displayed on the calling extension's telephone to show the reason for the user's absence.

Selection

- Message number: **1 through 9**
- Message: **16 characters (max.)**

Default

- 1: Will Return Soon
- 2: Gone Home
- 3: At Ext %%%
- 4: Back at %%%:%%
- 5: Out Until %%%/%%
- 6: In a Meeting
- 7 through 9: Blank (not stored)

Programming

1. Enter **008**.
Display: 008 ABSENT MSG.
2. Press **NEXT**.
Display: MSG NO?→
3. Enter a **message number**.
To enter message number 1, you can also press **NEXT**.
Display example: MSG1:Will Return
4. Enter the **message**.
For entering characters, see Section 1.4 Entering Characters.
To delete the current entry, press **CLEAR**.
To change the current entry, press **CLEAR** and enter the new message.
5. Press **STORE**.
6. To program another message, press **NEXT** or **PREV**, or **SELECT** and the desired **message number**.
7. Repeat steps 4 through 6.
8. Press **END**.

Conditions

- There is a maximum of nine messages. Messages 1 through 6 are programmed at the factory but can be changed. Each message has a maximum of 16 characters.
- You can enter a maximum of seven "%" characters per message which can be programmed at each user's extension. The station user can enter **0 through 9**, ***** and **#** for the % characters. If the user enters digits less than the number of "%" characters, it is recommended to fill the remaining "%" characters with "#" or "*".
- If there are 4-digit extension numbers available in your system, add one "%" to Message 3.
- To display parts of the message which have scrolled off the display, press **▶** or **◀**.

Features Guide References

Absent Message Capability

[009] Quick Dial Number Set

Description

Stores up to eight quick dial numbers.

Selection

- Location number: **1 through 8**
- Desired number: **16 digits (max.)**

Default

All location numbers — Not stored

Programming

1. Enter **009**.
Display: 009 QUICK DIAL
2. Press **NEXT**.
Display: Location NO?→
3. Enter a **location number**.
To enter location number 1, you can also press **NEXT**.
Display example: 1:Not Stored
4. Enter a **desired number**.
To delete the current entry, press **CLEAR**.
To change the current entry, press **CLEAR** and enter the new number.
5. Press **STORE**.
6. To program another location, press **NEXT** or **PREV**, or **SELECT** and the desired **location number**.
7. Repeat steps 4 through 6.
8. Press **END**.

Conditions

- A maximum of sixteen digits, consisting of **0 through 9**, can be assigned to a quick dial number.
- Before programming, assign a feature number for each location first in program [100] Flexible Numbering.

Features Guide References

Quick Dialing

[014] VM Name Set

Description

Assigns a name for each voice mail port.

Selection

- Voice Mail (VM) number: **01 through 08**
- Name: **10 characters (max.)**

Default

VM01: V.Mail 01, VM02: V.Mail 02, VM03: V.Mail 03, VM04: V.Mail 04, VM05: V.Mail 05, VM06: V.Mail 06, VM07: V.Mail 07, VM08: V.Mail 08

Programming

1. Enter **014**.

Display: 014 VM PORT NAME

2. Press **NEXT**.

Display: VM NO?→

3. Enter a **VM number**.

To enter VM number 01, you can also press **NEXT**.

Display example: VM01:V.Mail 01

4. Enter a **name**.

For entering characters, see Section 1.4 Entering Characters.

To delete the current entry, press **CLEAR**.

To change the current entry, press **CLEAR** and enter the new name.

Display example: VM01:Voice No.1

5. Press **STORE**.

6. To program another voice mail port, press **NEXT** or **PREV**, or **SELECT** and the desired **voice mail number**.

7. Repeat steps 4 through 6.

8. Press **END**.

Conditions

None

Features Guide References

Voice Mail Integration

[017] DISA User Codes

Description

Assigns the Direct Inward System Access (DISA) User Codes and a Class of Service (COS) to each code. The COS of the code determines the toll restriction level of the DISA caller.

Note

Warning for the Direct Inward System Access Users

When you enable the Outside – Outside Line Call feature of **Direct Inward System Access (DISA) function**, if a third party discovers the password (a DISA User Code) of the system, you have a risk that they will make illegal phone calls using your telephone line, and the cost may be charged to your account.

In order to avoid this problem, we strongly recommend the following points:

1. Carefully maintain the secrecy of the password.
2. Specify a complicated password as long and random as you can make it.
3. Change the password frequently.

Selection

- DISA user code number: **01 through 32**
- DISA user code: **4 through 10 digits**
- COS number: **1 through 8**

Default

Code 01=Blank — COS 8
 Code 02=Blank — COS 8
 :
 Code 32=Blank — COS 8

Programming

1. Enter **017**.
 Display: 017 USER CODES
2. Press **NEXT**.
 Display: User Code NO?→
3. Enter a **DISA user code number**.
 To enter user code number 01, you can also press **NEXT**.
 Display example: 01: C:8
4. Enter a **DISA user code**.
 To change the current entry, enter the new code.

5. Press **►** to program **COS**.
6. Enter a **COS number**.
To change the current entry, enter the new COS number.
7. Press **STORE**.
8. To program another user code, press **NEXT** or **PREV**, or **SELECT** and the desired **DISA user code number**.
9. Repeat steps 4 through 8.
10. Press **END**.

Conditions

- This setting is required if Trunk (Outside line) Security mode is selected in program [809] DISA Security Type.
- There are 32 programmable user codes. Each code should be unique and composed of four through ten numerical digits, **0 through 9**.

Features Guide References

Direct Inward System Access (DISA)

2.2 System Programming

[100] Flexible Numbering

Description

Assigns the leading digits of extension numbers and feature numbers for system features.

Feature Number List

Number	Feature	Default
01	1st hundred extension block	1
02	2nd hundred extension block	2
03 - 16	3rd through 16th hundred extension block	None
17	Operator call	0
18	Automatic line access	9
19	Outside line group line access	8
20	System speed dialing	*
21	Personal speed dialing	3*
22	Personal speed dialing programming	30
23	Doorphone call	31
24	Paging — external	32
25	Paging — external answer / TAFAS answer	42
26	Paging — group	33
27	Paging — group answer	43
28	Call pickup, outside line	4*
29	Call pickup, group	40
30	Call pickup, directed	41
31	Call hold	50
32	Call hold retrieve — intercom	51
33	Call hold retrieve — outside line	53
34	Last number redial	#
35	Call park / call park retrieve	52
36	Account code entry	49
37	Door opener	55

Feature Number List

Number	Feature	Default
38	External feature access	6
39	Station program clear	790
40	Message waiting	70
41	Outgoing message	36
42	Call forwarding / do not disturb	710
43	Call pickup deny	720
44	Data line security	730
45	Call waiting	731
46	Executive busy override deny	733
47	Pickup dialing	74
48	Absent message	750
49	Timed reminder	76
50	Electronic station lockout	77
51	Day / Lunch / Break / Night service mode	78
52	Parallel telephone mode	39
53	Background music — external	35
54	LCS password	799
55	Call log, incoming	56
56	Call log lock, incoming	57
57	Timed reminder, remote	7✕
58	Log-in / log-out	45
59	Automatic callback busy cancel	46
60	Walking COS	47
61	Reserved	—
62	System working report	794
63 - 70	Quick dial location numbers 1-8	None
71 - 89	Reserved	None
90	Paging — deny	721
91	Reserved	—
92	Call log, clear	590
93	Room Monitor	734

Selection

- Selection number:
01 through 93 (See "Feature Number List" for the corresponding features.)
- Feature number:
1 or 2 digits (for selection numbers 01 – 16);
1 through 3 digits (for selection numbers 17 – 60, 62 – 70, 90 and 92 – 93)

Default

See "Feature Number List" on the previous pages.

Programming

1. Enter **100**.
Display: 100 FLEX. NUMBER
2. Press **NEXT**.
Display: Select NO?→
3. Enter a **selection number**.
To enter selection number 01, you can also press **NEXT**.
Display example: 01. 1-EXT BL:1
4. Enter the **feature number**.
To delete the feature number, press **CLEAR**.
To change the current entry, press **CLEAR** and enter the new number.
5. Press **STORE**.
6. To program another selection, press **NEXT** or **PREV**, or **SELECT** and the desired **selection number**.
7. Repeat steps 4 through 6.
8. Press **END**.

To remove all the feature numbers except selection numbers (01) through (16) 1st through 16th extension blocks;

1. Enter **100**.
2. Press **NEXT**.
3. Enter **00**.
Display: All Feature CLR?
4. Press **STORE**.
5. Press **END**.

Conditions

- Each extension block has one or two digits, consisting of **0 through 9**. Assign the leading digits for extension numbers of the respective blocks.

- Assignment of extension blocks defines the limits for programs [003] Extension Number Set, [118] Voice Mail Extension Number Assignment, [124] Phantom Extension Number Assignment and [813] Floating Number Assignment.
- Each feature number has one through three digits, consisting of **0 through 9, ***, and **#**.
- If * or # is included in a feature number, dial pulse telephone users cannot access the feature.
- Double entry and incompatible combinations are invalid. Valid entry examples: 30 and 31, 210 and 211. Invalid entry examples: 5 and 5, 30 and 301.
- If you delete a feature number, the feature cannot be used by dialing operation.
- You can remove all the feature numbers except selections (01) through (16).
- To clear an extension block (01) through (16), it is required to change the corresponding numbers assigned in program [003] Extension Number Set, [118] Voice Mail Extension Number Assignment, [124] Phantom Extension Number Assignment and program [813] Floating Number Assignment.

Features Guide References

Flexible Numbering

[101] Day / Night Service Switching Mode

Description

This program is used to determine if night mode is set automatically or manually.

Selection

Manual / Auto (automatic)

Default

Manual

Programming

1. Enter **101**.
Display: 101 DAY/NT AUTO
2. Press **NEXT**.
Display example: D/N Mode:Manual
3. Keep pressing **SELECT** until the desired selection is displayed.
4. Press **STORE**.
5. Press **END**.

Conditions

- If automatic switching is assigned, day / night mode is switched at the time programmed in [102] Day / Night Service Starting Time.
- The operator and manager can switch the day / night mode at any time.

Features Guide References

Night Service

[102] Day / Night Service Starting Time

Description

Sets the starting time on a day of the week basis, when automatic day / night switching is programmed in program [101] Day / Night Service Switching Mode.

Selection

- Day of the week selection number:
1 (Sunday) / **2** (Monday) / **3** (Tuesday) / **4** (Wednesday) /
5 (Thursday) / **6** (Friday) / **7** (Saturday) / ***** (every day of the week)
- Hour: **1 through 12 / Disable** (no switching)
- Minute: **0 through 59**
- **AM / PM**

Default

Every day of the week — Day — 9:00 AM / Night — 5:00 PM

Programming

1. Enter **102**.
Display: 102 DAY/NT CLOCK
2. Press **NEXT**.
Display: Day of Week?→
3. Enter the **day of the week selection number**.
To select Sunday, you can also press **NEXT**.
Display example: Sun-Day:9:00 AM
To select night mode, press **NEXT**.
Display example: Sun-Nt :5:00 PM
4. Enter the **hour**.
To set no switching, keep pressing **SELECT** until "Disable" is displayed and go to step 9.
If **SELECT** is pressed, the display shows the previous entry. If the previous setting was "Disable", press **SELECT** to enter the starting time.
To change the current entry, press **CLEAR** and enter the new time.
5. Press **▶**.
6. Enter the **minute**.
To change the current entry, press **CLEAR** and enter the new minutes.
7. Press **▶**.
8. Press **SELECT** for AM or PM.
9. Press **STORE**.

10.To program another day / night mode or day of the week, press **NEXT** or **PREV**, or **SELECT** and the **day of the week selection number**.

11.Repeat steps 4 through 10.

12.Press **END**.

Conditions

- To select the desired day, you may keep pressing **NEXT** in step 3. To assign every day of the week to one selection, press the ✕ key in step 3. In this case, the display shows the contents programmed for Sunday.
- If day / night switching is not desired, select "Disable" in step 4.
- You cannot leave the entry empty.

Features Guide References

Night Service

[103] Automatic Access Outside Line Assignment

Description

Assigns the sequence in which outside line groups will be accessed when in Automatic Line Access mode. When a user dials the feature number for automatic line access (default=9) or presses the Loop-CO button, an idle line is searched for in the programmed outside line group order.

Selection

- Outside line group number: **1 through 8 in desired order**

Default

12345678

Programming

1. Enter **103**.
Display: 103 AUTO CO GRP
2. Press **NEXT**.
Display example: Access:12345678
3. Enter the **outside line group numbers** in priority from top to bottom.
To delete the current entry, press **CLEAR**.
To change the current entry, press **CLEAR** and enter the new order.
4. Press **STORE**.
5. Press **END**.

Conditions

- The system supports a maximum of eight outside line groups.

Features Guide References

Line Access, Automatic

Line Access, Direct

Line Preference — Outgoing (Idle Line / No Line / Prime Line)

[105] Account Codes

Description

Assigns the account codes for Account Code Entry, Verified — All Calls and Verified — Toll Restriction Override modes. If Verified — All Calls is assigned in program [508] Account Code Entry Mode, an account code is required to make an outside call. If Verified — Toll Restriction Override is assigned, an account code is only required for a toll call and overrides toll restriction.

Selection

- Location number: **001 through 128**
- Account code: **10 digits (max.)**

Default

All locations — Not stored

Programming

1. Enter **105**.
Display: 105 ACCT CODES
2. Press **NEXT**.
Display: Location NO?→
3. Enter a **location number**.
To enter location number 001, you can also press **NEXT**.
Display example: 001:Not Stored
4. Enter an **account code**.
To delete the current entry, press **CLEAR**.
To change the current entry, press **CLEAR** and enter the new account code.
5. Press **STORE**.
6. To program another location, press **NEXT** or **PREV**, or **SELECT** and the desired **location number**.
7. Repeat steps 4 through 6.
8. Press **END**.

Conditions

- Each verifiable account code has a maximum of 10 digits, consisting of **0 through 9**.
- Program [508] Account Code Entry Mode is used to select the Account Code Entry mode.
- Account codes having "99" in any part or ending with "9" are invalid, as "99" is used as a delimiter when entering an account code.

Features Guide References

Account Code Entry

Toll Restriction Override by Account Code Entry

[106] Station Hunting Type

Description

Used to enable or disable hunting and set the Station Hunting type for each extension group. There are five Station Hunting types available: Circular, Terminating, Voice Mail (VM), Automated Attendant (AA), Ring Group.

If circular hunting is assigned for a group, all of the extensions in the group are searched until an idle one is found. If terminating hunting is assigned, searching stops at the extension which has the largest jack number in the group. If VM hunting is assigned, all of the VM ports of an extension group are searched until an idle one is found which allows Voice Mail Service. If AA hunting is assigned, all of the AA ports of an extension group are searched until an idle one is found which allows AA Service. If Ring Group is assigned, all of the extensions in the ring group ring simultaneously.

Selection

- Extension group number: **1 through 8, ***
(* = all extension groups)
- **Disable** (no hunting) / **Terminate** (terminating) / **Circular** / **VM** (voice mail) / **AA** (automated attendant) / **RING**

Default

All extension groups — Disable

Programming

1. Enter **106**.
Display: 106 STATION HUNT
2. Press **NEXT**.
Display: EXT GRP NO?→
3. Enter an **extension group number**.
To enter extension group number 1, you can also press **NEXT**.
Display example: Group1:Disable
4. Keep pressing **SELECT** until the desired selection is displayed.
5. Press **STORE**.
6. To program another extension group, press **NEXT** or **PREV**, or **SELECT** and the desired **extension group number**.
7. Repeat steps 4 through 6.
8. Press **END**.

Conditions

- Program [602] Extension Group Assignment is used to assign the extension group members.
- To assign all extension groups to one selection, press the ✖ key in step 3. In this case, the display shows the contents programmed for extension group 1.

Features Guide References

Ring Group

Station Hunting

Voice Mail Integration

[107] System Password

Description

Assigns the password required for entering System Programming mode.

Selection

Password: **4 through 7 digits**

Default

1234

Programming

1. Enter **107**.

Display: 107 SYS PASSWORD

2. Press **NEXT**.

Display: Password:1234

3. Enter a **password**.

To change the current entry, press **CLEAR** and enter the new password.

4. Press **STORE**.

5. Press **END**.

Conditions

- The password can be from four to seven digits long. The valid numbers are from **0 through 9**.
- If less than four digits are entered, they are not stored.
- You cannot leave the entry empty.

Features Guide References

System Programming with Proprietary Telephone

[108] Automatic Hold by CO / DSS Button

Description

Enables or disables automatically holding an outside call when a DSS (Direct Station Selection) button on the DSS Console or proprietary telephone, or a CO button on a proprietary telephone is pressed. Through this assignment, each button acts as follows:

- Pressing the DSS button holds an outside call and quickly transfers it to an extension without pressing the TRANSFER button.
- Pressing another CO button holds the current outside call.

Selection

- **Button: DSS or CO**
- **Enable / Disable**

Default

DSS button — Enable, CO button — Disable

Programming

1. Enter **108**.
Display: 108 AUTO HOLD
2. Press **NEXT** to program the DSS button.
Display example: DSS XFER:Enable
3. Keep pressing **SELECT** until the desired selection is displayed.
4. Press **NEXT** to program the CO button.
Display example: CO Hold:Disable
5. Keep pressing **SELECT** until the desired selection is displayed.
6. Press **STORE**.
7. Press **END**.

Conditions

- This assignment applies to all DSS and CO buttons on all DSS Consoles and proprietary telephones in the system.

Features Guide References

Automatic Hold by CO Button
One-Touch Transfer by DSS Button

[109] Expansion Unit Type

Description

Assigns the type of expansion units to be used in the system.
This allows the system to identify the unit in each expansion unit location.

Selection

- Areas 1; 2; 3 = **C / E1 / E2**
(C: 4-Outside lines, E1: 8-Extension lines 1 /
E2: 8-Extension lines 2)

Default

C;E1;E2

Programming

1. Enter **109**.
Display: 109 EXPAND C, E1
2. Press **NEXT**.
Display example: C ;E1;E2
3. Keep pressing **SELECT** until the desired selection in Area 1 is displayed.
4. Press **▶** to program another Area, if required.
5. Keep pressing **SELECT** until the desired selection in the Area is displayed.
6. Repeat steps 4 and 5 until all the required entries are completed.
7. Press **END**.

Conditions

- The following units can be installed in the slots.
 - C (4-Outside lines): 4 CO Line Expansion Unit
 - E1, E2 (8-Extension lines):
8 Extension Expansion Unit
- There are three expansion areas in each system for the KX-TA1232, areas 1, 2 and 3 from bottom to top. Up to two 8 Extension Expansion Units and one of 4 CO Line Expansion Unit can be installed.
- After changing the setting, turn the Power Switch off and on once. Otherwise, the previous setting will remain.

Features Guide References

Module Expansion

[110] Caller ID Code Set

Description

Sets the identification code of the calling party (Caller ID Code) to utilize a Caller ID Service provided by a specific central office (CO). If an ID Code transmitted from the CO is found in the Caller ID Code Table, the caller's ID Code or name given to the code in program [111] Caller ID Name Set is displayed on the telephone. This allows the called party to recognize the caller.

Selection

- Location number: **001 through 500**
- Caller ID Code: **24 digits (max.)**

Default

All locations — Not stored

Programming

1. Enter **110**.
Display: 110 CALLER ID #
2. Press **NEXT**.
Display: Location NO?→
3. Enter a **location number**.
To enter location number 001, you can also press **NEXT**.
Display example: 001:Not Stored
4. Enter a **Caller ID Code**.
To delete the current entry, press **CLEAR**.
To change the current entry, press **CLEAR** and enter the new code.
5. Press **STORE**.
6. To program another location, press **NEXT** or **PREV**, or **SELECT** and the desired **location number**.
7. Repeat steps 4 through 6.
8. Press **END**.

Conditions

- Each Caller ID Code has a maximum of 24 digits, consisting of **0 through 9**.
- Program [111] Caller ID Name Set is used to give names to the Caller ID Codes. If an ID Code is assigned a name, the called party's telephone will show the name in place of the ID Code.

- Program [406] Caller ID Assignment is used to enable the Caller ID Service on an outside line basis.

Features Guide References

Caller ID

[111] Caller ID Name Set

Description

With Caller ID Service, the calling party is displayed either by its ID Code or by its name. If the name display is required, use this program to give a name to a caller ID Code stored in program [110] Caller ID Code Set.

Selection

- Location number: **001 through 500**
- Caller ID Name: **15 characters (max.)**

Default

All locations — Not stored

Programming

1. Enter **111**.
Display: 111 CALLER NAME
2. Press **NEXT**.
Display: Location NO?→
3. Enter a **location number**.
To enter location number 001, you can also press **NEXT**.
Display example: 001:Not Stored
4. Enter a **Caller ID Name**.
For entering characters, see Section 1.4 Entering Characters.
To delete the current entry, press **CLEAR**.
To change the current entry, press **CLEAR** and enter the new name.
5. Press **STORE**.
6. To program another location, press **NEXT** or **PREV**, or **SELECT** and the desired **location number**.
7. Repeat steps 4 through 6.
8. Press **END**.

Conditions

- Caller ID Name corresponds to the Caller ID Codes stored in program [110] Caller ID Code Set.
- Each name has a maximum of 15 characters.

Features Guide References

Caller ID

[113] VM Status DTMF Set

Description

Sets the DTMF (Dual Tone Multi-Frequency) signals transmitted to your Voice Processing System (VPS) to inform the VPS of the VPS ports states quickly:

The following signals are sent to the VPS with the assigned DTMF signals:

RBT (ringback tone):

This signal is sent when calling an extension.

BT (busy tone):

This is sent when the called extension is busy.

ROT (reorder tone):

This is sent when the dialed number is invalid.

DND (DND tone):

This is sent when the other extension has DND assigned.

Answer:

This is sent when the other extension answers the call.

Disconnect:

This is sent when the other extension hangs up.

Confirm (confirmation tone) :

This is sent when the feature number for "Message Waiting Lamp" is valid.

FWD VM RBT (FWD to VM ringback tone) :

Not available (reserved).

FWD VM BT (FWD to VM busy tone) :

This is sent when the called extension has set Call Forwarding to VPS.

FWD EXT RBT (FWD to extension ringback tone) :

Not available (reserved).

Selection

- **RBT / BT / ROT / DND / Answer / Disconnect / Confirm / FWD VM RBT / FWD VM BT / FWD EXT RBT**
- DTMF signal number: **3 digits (max.)**

Default

RBT — 1; BT — 2; ROT — 3; DND — 4; Answer — 5; Disconnect — #9; Confirm — 9; FWD VM RBT — 6; FWD VM BT — 7; FWD EXT RBT — 8

Programming

1. Enter **113**.

Display: 113 VM DTMF SET

2. Press **NEXT** to program ringback tone status.

To program another status, keep pressing **NEXT** until the desired status is displayed.

Display example: RBT :1

3. Enter a DTMF signal number.

To delete the current entry, press **CLEAR**.

To change the current entry, press **CLEAR** and enter the new number.

4. Press STORE.

5. To program another selection, keep pressing NEXT or PREV until the desired selection is displayed.

6. Repeat steps 3 through 5.

7. Press END.

Conditions

- A DTMF signal number can have a maximum of three digits, consisting of **0 through 9**, *****, **#** and **PAUSE**.
- The DTMF signals are sent to the extensions in the extension group that is assigned as "VM" or "AA" in program [106] Station Hunting Type.

Features Guide References

Voice Mail Integration

[114] VM Command DTMF Set

Description

Sets the DTMF (Dual Tone Multi-Frequency) command signals transmitted to your Voice Processing System (VPS). There are four commands available: Leave Message; Get Message; Automated Attendant Service; Voice Mail Service. These commands are used in the following ways:

(A) If your VPS is used for Voice Mail (VM) Service

(1) Call Forwarding / Intercept Routing to Voice Mail

If a call is forwarded to the VPS, your system will send a mailbox number to the VM port. This allows the caller to leave a message without knowing the mailbox number.

- Required entries (selections):
LV-MSG (Leave Message): This command is transmitted to a VM port if a call is forwarded or intercepted and rerouted to the port.
AA-SVC (Automated Attendant Service): If "Disable" is selected in program [990], Area 05 - Bit 7, the "AA-SVC" command is sent to a VM port when an incoming outside call is routed to the VM port by IRNA.
- Other programming required (program addresses): [106]; [602]; [609]; [990], Area 02 - Bit 8

(2) Hearing the message at the extension

If the VPS receives a message and lights the MESSAGE button indicator of the dialed telephone, the telephone user can hear the message by pressing the MESSAGE button.

- Required entries (selections):
GETMSG (Get Message): This command is transmitted to a VM port when the message receiver presses the MESSAGE button.
VM-SVC (Voice Mail Service): The "VM-SVC" command is a code transmitted preceding the "GETMSG" command above.
This is effective to switch to VM port when an AA port lights the MESSAGE indicator.
- Other programming required (program addresses): [609]; [990], Area 02 - Bit 8

(B) If your VPS is used for Automated Attendant (AA) Service

An AA port answers an incoming outside call to provide AA services, such as call transfer, receiving a message.

- Required entries (selections):
VM-SVC (Voice Mail Service): The "VM-SVC" command is a code transmitted before the "LV-MSG" code if an operator transfers a call to an extension and then it is forwarded to an AA port so that the AA port can be switched to the VM port temporarily.
- Other programming required (program addresses): [106], [602]

Selection

- **LV-MSG / GETMSG / AA-SVC / VM-SVC**
- DTMF signal number: **16 digits (max.)**

Default

LV-MSG — H; GETMSG — *H; AA-SVC — #8 ; VM-SVC — #6

Programming

1. Enter **114**.

Display: 114 VM DTMF CMD

2. Press **NEXT** to program the LV-MSG command.

To program another command, keep pressing **NEXT** until the desired command is displayed.

Display example: LV-MSG:H

3. Enter a **DTMF signal number**.

To delete the current entry, press **CLEAR**.

To change the current entry, press **CLEAR** and enter the new number.

4. Press **STORE**.

5. To program another selection, keep pressing **NEXT** or **PREV** until the desired selection is displayed.

6. Repeat steps 3 through 5.

7. Press **END**.

Conditions

- A command signal number can have a maximum of 16 digits, consisting of **0 through 9**, *****, **#**, **FLASH** and **PAUSE**.
- The **FLASH** button is available only for LV-MSG and GETMSG commands to store "H" which means "Home Position".
- If "H" is stored for "LV-MSG", a mailbox number programmed in program [609] Voice Mail Access Codes or an extension number will be sent to the VM port (Follow On ID function). If certain codes are required before and after the ID code, insert "H" between the codes, as "aaaHbbb". If nothing is stored, it will operate as "H".
- If "*H" is stored for "GETMSG", a mailbox number programmed in program [609] Voice Mail Access Codes or an extension number will be sent to the port succeeding the "*".

Features Guide References

Voice Mail Integration

[116] ROM Version Display

Description

Confirms the version of ROM of the system.

Display example:

Y831AA30101A
Version Date

Selection

None

Default

Not applicable.

Programming

1. Enter **116**.
Display: 116 ROM VERSION
2. Press **NEXT**.
The display shows the ROM version.
3. Press **END**.

Conditions

None

Features Guide References

None

[117] Voice Mail Number Assignment

Description

Four KX-TA1232 jacks (listed below) are available for connection to a Panasonic Voice Processing System (VPS) with DPT Integration capability. Each jack supports two DPT VPS ports. This program assigns the jack numbers corresponding to VPS ports.

Selection

- Jack number: **07, 08, 15, 16**

Default

All jacks — Blank

Programming

1. Enter **117**.
Display: 117 VMS PORT ASN
2. Press **NEXT** to program.
Display example: # # # #
3. Enter a **jack number**.
To delete the current entry, press **CLEAR**.
To change the current entry, press **CLEAR** and enter the new jack number.
4. Press **►** to enter another jack number.
5. Repeat steps 3 through 4 to enter another jack number.
6. Press **STORE**.
7. Press **END**.

Conditions

- Only jack number 07, 08, 15 or 16 is assigned as a voice mail port jack.
- The jack numbers correspond to the voice mail port in numerical order.
Example: Stored jack numbers: Jacks 07, 08, 15, 16
Jack 07=Voice mail numbers 01, 02; Jack 08=Voice mail numbers 03, 04;
Jack 15=Voice mail numbers 05, 06; Jack 16=Voice mail numbers 07, 08
- This program is for DPT Integration only. Do not use it for Inband Integration.

Features Guide References

Voice Mail Integration (DPT Integration)

[118] Voice Mail Extension Number Assignment

Description

Assigns the extension number for the voice mail number. These numbers can be used the same way extension numbers are used for station access.

Selection

- Voice mail number (VM): **01 through 08**
- Extension Number: **2 to 4 digits**

Default

VM-01=165, VM-02=166, VM-03=167, VM-04=168, VM-05=169, VM-06=170, VM-07=171, VM-08=172

Programming

1. Enter **118**.
Display: 118 VM EXT #
2. Press **NEXT**.
Display: VM NO? →
3. Enter a **voice mail number**.
To enter voice mail number 01, you can also press **NEXT**.
Display: VM-01:#07-1:165
4. Enter an **extension number**.
To change the current entry, press **CLEAR** and enter the new number.
5. Press **STORE**.
6. To program another voice mail number, press **NEXT** or **PREV**, or **SELECT** and the desired voice mail number.
7. Repeat steps 4 through 6.
8. Press **END**.

Conditions

- You cannot leave an entry empty.
- Double entry and incompatible entry for these numbers are invalid. Valid entry example: 10 and 11, 10 and 110. Invalid entry example: 10 and 106.
To avoid making an invalid entry, check the other extension numbers in programs [003] Extension Number Set, [124] Phantom Extension Number Assignment and [813] Floating Number Assignment.

- The display shows "VM-XX:#YY:ZZZ" in step 3. "XX" means the voice mail number. "YY" means the jack number of the voice mail port programmed in [117] Voice Mail Number Assignment. "ZZZ" represents the voice mail extension number.

Features Guide References

Voice Mail Integration (DPT Integration)

[119] Voice Mail Extension Group Assignment

Description

Assigns each voice mail number to a voice mail extension group number.

Selection

- Voice mail number (VM): **01 through 08**, * (*=all voice mail numbers)
- Voice mail extension group number (EXG) = **1 through 8**

Default

All voice mail numbers — EXG 1

Programming

1. Enter **119**.
Display: 119 VM EXT GROUP
2. Press **NEXT**.
Display: VM NO? →
3. Enter a **voice mail number**.
To enter voice mail number 01, you can also press **NEXT**.
Display example: VM-01:#07-1:EXG1
4. Enter the **voice mail extension group number**.
To delete the current entry, press **CLEAR**.
To change the current entry, enter the new number.
5. Press **STORE**.
6. To program another voice mail number, press **NEXT** or **PREV**, or **SELECT** and the desired voice mail number.
7. Repeat steps 4 through 6.
8. Press **END**.

Conditions

- The display shows "VM-XX:#YY:EXG Z" in step 3.
"XX" means a voice mail number. "YY" means the jack number of the voice mail port programmed in [117] Voice Mail Number Assignment.
- To assign all voice mail numbers to one selection, press the * key in step 3. In this case, the display shows the contents programmed for voice mail number 01.

Features Guide References

Voice Mail Integration (DPT Integration)

[120] User Password

Description

Assigns the password required for entering the User Programming mode.

In the User Programming Mode, any display proprietary telephone user in the system can set the following programs:

- [000] Date and Time Set
- [001] System Speed Dialing Number Set
- [003] Extension Number Set
- [004] Extension Name Set
- [005] Flexible CO Button Assignment
- [006] Operator / Manager Extension Assignment
- [007] DSS Console Port and Paired Telephone Assignment
- [008] Absent Messages
- [009] Quick Dial Number Set
- [014] VM Name Set
- [017] DISA User Codes

Selection

- Password: **4 through 7 digits**

Default

1234

Programming

1. Enter **120**.
Display: 120 USR PASSWORD
2. Press **NEXT**.
Display example: Password:1234
3. Enter a **password**.
To change the current entry, press **CLEAR** and enter the new password.
4. Press **STORE**.
5. Press **END**.

Conditions

- The password can be from four to seven digits long. Valid numbers are from **0 to 9**.
- If less than four digits are entered, they will not be stored.
- You cannot leave the entry empty.

Features Guide References

User Programming (Manager Programming)

[121] Walking COS Password

Description

Assigns the password required for Walking COS.

Selection

Password: **4 through 7 digits**

Default

1234

Programming

1. Enter **121**.

Display: 121 COS PASSWORD

2. Press **NEXT**.

Display example: Password:1234

3. Enter a **password**.

To change the current entry, press **CLEAR** and enter the new password.

4. Press **STORE**.

5. Press **END**.

Conditions

- The password can be from four to seven digits long. Valid numbers are from **0 to 9**.
- If less than four digits are entered, they will not be stored.
- You cannot leave the entry empty.

Features Guide References

Walking COS

[124] Phantom Extension Number Assignment

Description

Assigns the phantom extension numbers. Each number will be assigned to a flexible CO or DSS (Direct Station Selection) button and used as a Phantom Extension button.

Selection

- Location number: **001 through 128**
- Phantom extension number: **2 to 4 digits**

Default

All locations — Not stored

Programming

1. Enter **124**.
Display: 124 PHANTOM #
2. Press **NEXT**.
Display: Location NO? →
3. Enter a **location number**.
To enter location number 001, you can also press **NEXT**.
Display example: 001:Not Stored
4. Enter a **phantom number**.
To delete the current entry, press **CLEAR**.
To change the current entry, press **CLEAR** and enter the new number.
5. Press **STORE**.
6. To program another location, press **NEXT** or **PREV**, or **SELECT** and the desired **location number**.
7. Repeat steps 4 through 6.
8. Press **END**.

Conditions

- Each phantom number has two to four digits, consisting of numbers **0 through 9**.
- The first one or two digits of the phantom extension numbers are subject to program [100] Flexible Numbering, (01) through (16) 1st through 16th hundred extension blocks.
- Phantom extension numbers and other extension numbers should be unique. Double entry and incompatible entry for these numbers are invalid. Valid entry example: 10 and 11, 10 and 110. Invalid entry example: 10 and 106.
To avoid making an invalid entry, check the other extension numbers in programs

[003] Extension Number Set, [118] Voice Mail Extension Number Assignment and
[813] Floating Number Assignment.

Features Guide References

Phantom Extension

[125] Area Code Assignment

Description

Assigns up to ten area codes which are necessary when using the Caller ID feature. By assigning your area code, the system records the caller's phone number modified by programs [126] Caller ID Modification for Local Call and [127] Caller ID Modification for Long Distance Call.

Selection

- Location number: **01 through 10**
- Area code: **1 through 6 digits**

Default

All locations — Blank

Programming

1. Enter **125**.
Display: 125 AREA CODE
2. Press **NEXT**.
Display: Location NO? →
3. Enter a **location number**.
To enter location number 01, you can also press **NEXT**.
Display example: 01:
4. Enter an **area code**.
To change the current entry, press **CLEAR** and enter the new area code.
5. Press **STORE**.
6. To program another location number, press **NEXT** or **PREV**, or **SELECT** and the desired location number.
7. Repeat steps 4 through 6.
8. Press **END**.

Conditions

- The area code can be six digits long. Valid numbers are from **0 to 9**.
- The location numbers used in this program corresponds to those in program [126] Caller ID Modification for Local Call.

Features Guide References

Caller ID

Call Log, Incoming

[126] Caller ID Modification for Local Call

Description

Assigns removed digits from the received caller's number of a local call, and adds number to make the final number which serves as the Caller ID number. The system records the modified caller's number to the incoming call log list so that the extension user can call back the caller. Digits are removed from or added to the beginning of the received digits.

Selection

- Location number: **01 through 10**
- Number of digits to be deleted: **0 through 9** (0=no deletion)
- Number to be added: **4 digits (max.)**

Default

All locations — Deleted number of digits = 3, Added number = blank

Programming

1. Enter **126**.
Display: 126 CID LOCAL
2. Press **NEXT**.
Display: Location NO? →
3. Enter a **location number**.
To enter location number 01, you can also press **NEXT**.
Display example: 01:Del3,Add
4. Enter the **number of digits to be deleted**.
To change the current entry, press **CLEAR** and enter the new number.
5. Press **▶** to program the number to be added, if required.
6. Enter the **number to be added**.
To change the current entry, press **CLEAR** and enter the new number.
7. Press **STORE**.
8. To program another location number, press **NEXT** or **PREV**, or **SELECT** and the desired location number.
9. Repeat steps 4 through 8.
10. Press **END**.

Conditions

- The added number has a maximum of 4 digits, consisting of **0 through 9**, ***** and **#**.

- There are ten location numbers for modified numbers, which corresponds to those in program [125] Area Code Assignment.

Features Guide References

Caller ID

Call Log, Incoming

[127] Caller ID Modification for Long Distance Call

Description

Assigns removed digits from the received caller's number of a long distance call, and adds number to make the final number which serves as the Caller ID number. The system records the modified caller's number to the incoming call log list so that the extension user can call back the caller.

Digits are removed from or added to the beginning of the received digits.

Selection

- Number of digits to be deleted: **0 through 9** (0=no deletion)
- Number to be added: **4 digits (max.)**

Default

Deleted number of digits — 0; Added number — 1

Programming

1. Enter **127**.

Display: 127 CID LD

2. Press **NEXT**.

Display example: Del,Add:0,1

3. Enter the **number of digits to be deleted**.

To change the current entry, press **CLEAR** and enter the new number.

4. Press **▶** to program the number to be added, if required.

5. Enter the **number to be added**.

To change the current entry, press **CLEAR** and enter the new number.

6. Press **STORE**.

7. Press **END**.

Conditions

- The added number has a maximum of 4 digits, consisting of **0 through 9**, ***** and **#**.

Features Guide References

Caller ID

Call Log, Incoming

[150] Lunch Service Starting / Ending Time

Description

Sets the Lunch starting and ending time for each day of the week.

Selection

- Day of the week selection number:
1 (Sunday) / **2** (Monday) / **3** (Tuesday) / **4** (Wednesday) / **5** (Thursday) / **6** (Friday) / **7** (Saturday) / ***** (every day of the week)
- Hour: **1 through 12**
- Minute: **0 through 59**
- **AM / PM**

Default

Every day of the week – 12:00 – 12:59 PM

Programming

1. Enter **150**.
 Display: 150 LUNCH TIME
2. Press **NEXT**.
 Display: Day of Week?→
3. Enter the **day of the week selection number**.
 To select Sunday, you can also press **NEXT**.
 Display example: Sun-BGN:12:00PM
4. Enter the **hour of starting time**.
5. Press **➡**.
6. Enter the **minute**.
 To change the current entry, press **CLEAR** and enter the new minutes.
7. Press **➡**.
8. Press **SELECT** for AM or PM.
9. Press **STORE**.
10. To program another lunch mode or day of the week, press **NEXT** or **PREV**, or **SELECT** and the **day of the week selection number**.
11. Repeat steps 4 through 10.
12. Press **END**.

Conditions

- This programming can only be used if "Auto (automatic)" is selected in program [101] Day / Night Service Switching Mode.
- Lunch service ends at the assigned time.
For example:
If Lunch service is 11:30 AM – 1:00 PM, Day mode starts at 1:01 PM.
If Lunch service is 11:30 AM – 12:59 PM, Day mode starts at 1:00 PM.

Features Guide References

Lunch / Break Service

Night Service

[151] Break Service Starting / Ending Time

Description

Sets the Break starting and ending time for each day of the week.

Selection

- Day of the week selection number:
1 (Sunday) / **2** (Monday) / **3** (Tuesday) / **4** (Wednesday) / **5** (Thursday) / **6** (Friday) / **7** (Saturday) / ***** (every day of the week)
- Hour: **1 through 12**
- Minute: **0 through 59**
- **AM / PM**

Default

Every day of the week – 3:00 – 3:29 PM

Programming

1. Enter **151**.
 Display: 151 BREAK TIME
2. Press **NEXT**.
 Display: Day of Week?→
3. Enter the **day of the week selection number**.
 To select Sunday, you can also press **NEXT**.
 Display example: Sun-BGN: 3:00PM
4. Enter the **hour of starting time**.
 To change the current entry, press **CLEAR** and enter the new time.
5. Press **➡**.
6. Enter the **minute**.
 To change the current entry, press **CLEAR** and enter the new minutes.
7. Press **➡**.
8. Press **SELECT** for AM or PM.
9. Press **STORE**.
10. To program another break mode or day of the week, press **NEXT** or **PREV**, or **SELECT** and the **day of the week selection number**.
11. Repeat steps 4 through 10.
12. Press **END**.

Conditions

- This feature can only be used if "Auto (automatic)" is selected in program [101] Day / Night Service Switching Mode.
- Break service ends at the assigned time.
For example:
If Break service is 3:00 – 4:00 PM, Day mode starts at 4:01 PM.
If Break service is 3:00 – 3:59 PM, Day mode starts at 4:00 PM.

Features Guide References

Lunch / Break Service

Night Service

2.3 Timer Programming

[200] Hold Recall Time

Description

Assigns the length of the hold recall timer. This timer is used to alert an extension that a call has been held for an extended period of time.

Selection

Time (seconds): **0 through 240** (0=Hold Recall disabled)

Default

60 sec

Programming

1. Enter **200**.
Display: 200 HOLD RECALL
2. Press **NEXT**.
Display example: Time: 60 sec
3. Enter the **time**.
To change the current entry, press **CLEAR** and enter the new time.
4. Press **STORE**.
5. Press **END**.

Conditions

- Select "0" if Hold Recall is not required.
- You cannot leave the entry empty.

Features Guide References

Hold Recall

[201] Transfer Recall Time

Description

Sets the number of rings before transfer recall occurs. If a transferred call is not answered after the programmed number of rings, the call returns to the original caller.

Selection

Number of rings: **0 through 48** (0=Transfer Recall disabled)

Default

12 rings

Programming

1. Enter **201**.

Display: 201 TRAN RECALL

2. Press **NEXT**.

Display example: Time:12 rings

3. Enter the **number of rings**.

To change the current entry, press **CLEAR** and enter the new number of rings.

4. Press **STORE**.

5. Press **END**.

Conditions

- Select "0" if Transfer Recall is not required.
- One ring is equivalent to five seconds.
- You cannot leave the entry empty.

Features Guide References

Call Transfer, Unscreened — to Extension

[202] Call Forwarding — No Answer Time

Description

Sets the number of rings for Call Forwarding — No Answer feature. If a call is not answered after the programmed number of rings, the call is forwarded to the destination.

Selection

Number of rings: **1 through 12**

Default

3 rings

Programming

1. Enter **202**.
Display: 202 CALL FWD-NA
2. Press **NEXT**.
Display example: Time: 3 rings
3. Enter the **number of rings**.
To change the current entry, press **CLEAR** and enter the new number of rings.
4. Press **STORE**.
5. Press **END**.

Conditions

- One ring is equivalent to five seconds.
- This timer is also used for Intercept Routing. If an incoming DISA (Direct Inward System Access) call to the Intercept Routing destination is not answered before this timer expires, the call will be disconnected.
- You cannot leave the entry empty.

Features Guide References

Call Forwarding — Busy / No Answer
Call Forwarding — No Answer

[203] Intercept Time

Description

Sets the number of rings for Intercept Routing — No Answer (IRNA) feature. If a call is not answered after the programmed number of rings, the call is redirected to the programmed station.

Selection

Number of rings: **3 through 48**

Default

12 rings

Programming

1. Enter **203**.

Display: 203 INTERCEPT

2. Press **NEXT**.

Display example: Time:12 rings

3. Enter the **number of rings**.

To change the current entry, press **CLEAR** and enter the new number of rings.

4. Press **STORE**.

5. Press **END**.

Conditions

- One ring is equivalent to five seconds.
- Programs [409-410] Intercept Extension — Day / Night are used to program the destination of Intercept Routing on an outside line group basis in day and night modes.
- If the original extension has set Call Forwarding — No Answer, Intercept Timer starts after Call Forwarding.
- You cannot leave the entry empty.

Features Guide References

Intercept Routing

[204] Pickup Dial Waiting Time

Description

Sets the number of seconds for Pickup Dialing. If the telephone user lifts the handset, the programmed party is called when the time expires.

Selection

Time (seconds): **1 through 5**

Default

1 sec

Programming

1. Enter **204**.
Display: 204 PICKUP DIAL
2. Press **NEXT**.
Display example: Time:1 sec
3. Enter the **time**.
To change the current entry, enter the new time.
4. Press **STORE**.
5. Press **END**.

Conditions

- This time gives the user an opportunity to dial digits before the automatic dialing process takes place.

Features Guide References

Pickup Dialing

[205] Extension-to-Outside Line Call Duration Time

Description

Sets the maximum time allowed for a conversation with an outside party. If an outside call is originated or answered by a programmed extension user and the timer expires, the call is disconnected.

Selection

Time (minutes): **1 through 64**

Default

10 min

Programming

1. Enter **205**.
Display: 205 EXT-CO TIME
2. Press **NEXT**.
Display example: Time:10 min
3. Enter the **time**.
To change the current entry, press **CLEAR** and enter the new time.
4. Press **STORE**.
5. Press **END**.

Conditions

- This time-out applies to extensions to which Limited Call Duration is assigned by program [502] Extension-to-Outside Line Call Duration Limit.
- This time cannot be set to zero or be left empty.

Features Guide References

Limited Call Duration

[206] Outside-to-Outside Line Call Duration Time

Description

Sets the maximum time allowed for a conversation between two outside parties. When the timer expires, the Outside-to-Outside Line call is disconnected.

Selection

Time (minutes): **1 through 64**

Default

10 min

Programming

1. Enter **206**.
Display: 206 CO-CO TIME
2. Press **NEXT**.
Display example: Time:10 min
3. Enter the **time**.
To change the current entry, press **CLEAR** and enter the new time.
4. Press **STORE**.
5. Press **END**.

Conditions

- You cannot leave the entry empty.

Features Guide References

Call Forwarding — to Outside Line
Call Transfer, Screened — to Outside Line
Conference, Unattended
Direct Inward System Access (DISA)

[207] First Digit Time

Description

Sets the maximum time allowed between the start of an outside dial tone and the first digit dialed on an outgoing outside call. If an extension user fails to dial any digits during this time, the DTMF (Dual Tone Multi-Frequency) receiver is released.

Selection

Time (seconds): **5 through 120**

Default

10 sec

Programming

1. Enter **207**.

Display: 207 1ST DIGIT T

2. Press **NEXT**.

Display example: Time: 10 sec

3. Enter the **time**.

To change the current entry, press **CLEAR** and enter the new time.

4. Press **STORE**.

5. Press **END**.

Conditions

- This timer is used for toll restriction checking.
- You cannot leave the entry empty.

Features Guide References

Toll Restriction

[208] Inter Digit Time

Description

Assigns the maximum time allowed between digits on an outgoing toll call. If an extension user fails to dial any digits during this time, the DTMF (Dual Tone Multi-Frequency) receiver is released. This timer applies until the Toll Restriction check is completed.

Selection

Time (seconds): **5 through 30**

Default

10 sec

Programming

1. Enter **208**.
Display: 208 INTER DIGIT
2. Press **NEXT**.
Display example: Time:10 sec
3. Enter the **time**.
To change the current entry, press **CLEAR** and enter the new time.
4. Press **STORE**.
5. Press **END**.

Conditions

- This timer is used for toll restriction checking.
- You cannot leave the entry empty.

Features Guide References

Toll Restriction

[211] Dial Start Time

Description

Sets the number of milliseconds the system waits before dialing after an outside line is seized.

Selection

Time (milliseconds): **0 through 40** ($\times 100$ is the actual time)

Default

500 msec

Programming

1. Enter **211**.

Display: 211 DIAL START

2. Press **NEXT**.

Display example: Time: 500 msec

3. Enter the **time**.

To change the current entry, press **CLEAR** and enter the new time.

4. Press **STORE**.

5. Press **END**.

Conditions

- You enter a number from **0 through 40**. The actual time is a 100 times your input.
- You cannot leave the entry empty.

Features Guide References

Line Access, Automatic

Line Access, Direct

Line Access, Individual

Line Access, Outside Line Group

[212] Call Duration Count Start Time

Description

Sets the number of seconds the system waits between the end of dialing and the start of the Station Message Detail Recording (SMDR) timer for outgoing toll calls. When the system has sent out all the digits to the central office and this timer expires, the system starts counting the call. A display telephone shows the elapsed time of the call. The starting time and the duration of a call are recorded in the SMDR record.

Selection

Time (seconds): **0 through 60**

Default

0 sec

Programming

1. Enter **212**.
Display: 212 CALL TIMER
2. Press **NEXT**.
Display example: Time: 0 sec
3. Enter the **time**.
To change the current entry, press **CLEAR** and enter the new time.
4. Press **STORE**.
5. Press **END**.

Conditions

- The timer starts counting after all the digits are dialed. This timer does not apply to incoming calls. The timer for incoming calls starts immediately.
- You cannot leave the entry empty.

Features Guide References

Display, Call Information
Station Message Detail Recording (SMDR)

[213] DISA Delayed Answer Time

Description

Assigns the number of rings between a call received and the answer by the Direct Inward System Access (DISA) feature.

Selection

Number of rings: **0 through 6**

Default

1 ring

Programming

1. Enter **213**.
Display: 213 DISA ANSWER
2. Press **NEXT**.
Display example: Time:1 rings
3. Enter the **number of rings**.
To change the current entry, enter the new number of rings.
4. Press **STORE**.
5. Press **END**.

Conditions

- One ring is equivalent to five seconds.
- You cannot leave the entry empty.

Features Guide References

Direct Inward System Access (DISA)

[214] DISA Prolong Time

Description

Sets the maximum allowable prolonged time for an outside-to-outside line call via the Direct Inward System Access (DISA) feature. An outside-to-outside line call is initially limited by the "Outside-to-Outside Line Call Duration Time" (Program [206]). However, the DISA caller can prolong the call after hearing the warning tones by pressing any key (except the * key). This parameter, the "DISA Prolong Time", sets the duration of these extended periods.

Selection

Time (minutes): **0 through 7** (0=no prolonging)

Default

3 min

Programming

1. Enter **214**.
Display: 214 DISA PROLONG
2. Press **NEXT**.
Display example: Time:3 min
3. Enter the **time**.
To change the current entry, enter the new time.
4. Press **STORE**.
5. Press **END**.

Conditions

- Do not confuse this parameter with the "Outside-to-Outside Line Call Duration Time" (Program [206]) parameter.
- Program [206] Outside-to-Outside Line Call Duration Time is used to set the duration time allowed for an outside-to-outside line call.
- You cannot leave the entry empty.

Features Guide References

Direct Inward System Access (DISA)

[215] Outgoing Message Time

Description

Sets the maximum allowable recording time for outgoing messages (OGM).

Selection

Time (seconds): **0 / 16 / 32 / 64** (0=no recording)

Default

32, 0, 32, 0 (for OGM 1 through 4 from left to right)

Programming

1. Enter **215**.
Display: 215 OGM MSG TIME
2. Press **NEXT** to program the time for OGM 1.
Display example: OGM:32, 0,32, 0
3. Keep pressing **SELECT** until the desired selection is displayed.
4. Press **▶** to program the time for OGM 2.
5. Keep pressing **SELECT** until the desired selection is displayed.
6. Repeat steps 4 and 5 to program the time for OGM's 3.
7. Press **STORE**.
8. Press **END**.

Conditions

- There are three messages available:
 - OGM 1:
used for DISA (Direct Inward System Access) message 1
 - OGM 2:
used for DISA message 2
 - OGM 3:
used for Timed Reminder
 - OGM 4:
not available (always set to "0")
- Enter the times starting from the left for OGM 1 to OGM 4.
- The total time of the outgoing messages cannot exceed 64 seconds.

Features Guide References

Direct Inward System Access (DISA)

Outgoing Message (OGM)
Timed Reminder

[216] Message Waiting Ring Interval Time

Description

Sets the Message Waiting ring interval time for a single line telephone.

Selection

Time (minutes): **0 through 64**

Default

0 min (no ring)

Programming

1. Enter **216**.

Display: 216 MW RING TIME

2. Press **NEXT**.

Display example: Interval: 0 min

3. Enter the **time**.

To change the current entry, press **CLEAR** and enter the new time.

4. Press **STORE**.

5. Press **END**.

Conditions

When the interval time is set to "0", the telephone does not ring for Message Waiting notification.

Selecting the message waiting ring type, 3 quick rings or 2 normal rings, in program [990] System Additional Information, Area 05 - Bit 11 is available. If you prefer soft ringing, select "3 quick rings". In this case, there may be some kinds of telephones which do not ring.

Features Guide References

Message Waiting

[217] Timed Reminder Alarm Ring Time

Description

Sets the number of seconds the Timed Reminder alarm rings.

Selection

Time (seconds): **30 through 240**

Default

30 sec

Programming

1. Enter **217**.
Display: 217 TIMED REMIND
2. Press **NEXT**.
Display example: Reminder: 30sec
3. Enter the **time**.
To change the current entry, enter the new time.
4. Press **STORE**.
5. Press **END**.

Conditions

None

Features Guide References

Timed Reminder
Timed Reminder, Remote (Wake-Up Call)

[218] DISA AA Wait Time

Description

Sets the number of seconds the system waits for a second digit entry. If the timer expires, the system assumes that the first digit is a DISA (Direct Inward System Access) built-in auto attendant number if assigned in program [815] DISA Built-in Auto Attendant.

Selection

Time (seconds): **1 through 5**

Default

1 sec

Programming

1. Enter **218**.
Display: 218 DISA AA WAIT
2. Press **NEXT**.
Display example: Time:1 sec
3. Enter the **time**.
To change the current entry, enter the new time.
4. Press **STORE**.
5. Press **END**.

Conditions

None

Features Guide References

Direct Inward System Access (DISA)

[219] Call Park Recall Time

Description

Sets the number of rings before call park recall occurs. Call park recall is used to alert an extension that a call has been parked for an extended period of time.

Selection

Number of rings: **0 through 48** (0=Call Park Recall disabled)

Default

12 rings

Programming

1. Enter **219**.
Display: 219 PARK RECALL
2. Press **NEXT**.
Display example: Time:12 rings
3. Enter the **number of rings**.
To change the current entry, press **CLEAR** and enter the new number of rings.
4. Press **STORE**.
5. Press **END**.

Conditions

- One ring is equivalent to five seconds.
- Select "0" if Call Park Recall is not required.
- You cannot leave the entry empty.

Features Guide References

Call Park

[221] Caller ID Call Waiting Time

Description

Assigns the length of the second caller information display timer.

The caller's information flashes on the display of a proprietary telephone during the assigned time when a call's information is sent from the Central Office with a Call Waiting tone.

Selection

Time: **10 sec / 20 sec / 30 sec / 40 sec / 60 sec / 120 sec**

Default

30 sec

Programming

1. Enter **221**.
Display: 221 C.W CID TIME
2. Press **NEXT**.
Display example: Time:30 sec
3. Keep pressing **SELECT** until the desired selection is displayed.
4. Press **STORE**.
5. Press **END**.

Conditions

- If a proprietary telephone user does not talk to the caller on the display (flashing) by pressing the FLASH button during the assigned time, the caller's information will be recorded automatically on the telephone and the Caller ID Indication button indicator lights.

Features Guide References

Caller ID Call Waiting

2.4 TRS Programming

[300] TRS Override for System Speed Dialing

Description

Allows you to enable toll restriction override for System Speed Dial Numbers. If this is enabled, all extension users can make System Speed Dialing calls with no restriction.

Selection

Enable / Disable

Default

Disable

Programming

1. Enter **300**.
Display: 300 TRS SPEED DL
2. Press **NEXT**.
Display example: Override:Disable
3. Keep pressing **SELECT** until the desired selection is displayed.
4. Press **STORE**.
5. Press **END**.

Conditions

- Select "Enable" for toll restriction override; Select "Disable" for toll restriction.

Features Guide References

Toll Restriction Override for System Speed Dialing

[301-305] TRS Denied Code Entry for Levels 2 through 6

Description

These allow you to specify the numbers which are toll-restricted for each toll restriction level as follows:

Program [301]: restricts levels 2 through 6

Program [302]: restricts levels 3 through 6

Program [303]: restricts levels 4 through 6

Program [304]: restricts levels 5 through 6

Program [305]: restricts level 6

Selection

Location number: **01 through 20**

Toll call number: **10 digits (max.)**

Default

All locations — Not stored

Programming

1. Enter a program address (**301 through 305**).

Display example: 301 TRS DENY L-2

2. Press **NEXT**.

Display: Location NO?→

3. Enter a **location number**.

To enter location number 01, you can also press **NEXT**.

Display example: 01:Not Stored

4. Enter a **toll call number**.

To delete the current entry, press **CLEAR**.

To change the current entry, press **CLEAR** and enter the new number.

5. Press **STORE**.

6. To program another location, press **NEXT** or **PREV**, or **SELECT** and the desired **location number**.

7. Repeat steps 4 through 6.

8. Press **END**.

Conditions

- There is a maximum of 20 toll call numbers which can be restricted for each program. Each number has a maximum of ten digits, consisting of **0 through 9**, and *****. The character "*" can be used as a wild card character.
- Programs [306-310] TRS Excepted Code Entry for Levels 2 through 6 are used to assign exceptions to these numbers. Programs [500]-[501] Toll Restriction Level — Day / Night are used to set the toll restriction value for each COS.

Features Guide References

Toll Restriction

[306-310] TRS Excepted Code Entry for Levels 2 through 6

Description

These allow you to assign numbers which are exceptions to the toll restriction specified in programs [301] through [305] as follows:

Program [306]: applies to level 2

Program [307]: applies to levels 2 through 3

Program [308]: applies to levels 2 through 4

Program [309]: applies to levels 2 through 5

Program [310]: applies to levels 2 through 6

Note

Store your emergency numbers in program [310].

Selection

- Location number: **1 through 5**
- Exceptional number: **10 digits (max.)**

Default

All locations — Not stored

Programming

1. Enter a **program address (306 through 310)**.
Display example: 306 TRS ALLOW 2
2. Press **NEXT**.
Display: Location NO?→
3. Enter a **location number**.
To enter location number 1, you can also press **NEXT**.
Display example: 1:Not Stored
4. Enter an **exceptional number**.
To delete the current entry, press **CLEAR**.
To change the current entry, press **CLEAR** and enter the new number.
5. Press **STORE**.
6. To program another location, press **NEXT** or **PREV**, or **SELECT** and the desired **location number**.
7. Repeat steps 4 through 6.
8. Press **END**.

Conditions

- There is a maximum of five numbers for each program. Each number has a maximum of ten digits, consisting of **0 through 9**, and *****. The character "*****" can be used as a wild card character.

Features Guide References

Toll Restriction

[311] Special Carrier Access Codes

Description

Assigns special carrier numbers. This allows the system to recognize the user-dialed special carrier number in order to insert the required pause and apply toll restriction.

Selection

- Location number: **01 through 20**
- Special carrier number: **7 digits (max.)**

Default

All locations — Not stored

Programming

1. Enter **311**.
Display: 311 CARRIER #
2. Press **NEXT**.
Display: Location NO?→
3. Enter a **location number**.
To enter location number 01, you can also press **NEXT**.
Display example: 01:Not Stored
4. Enter a **special carrier number**.
To delete the current entry, press **CLEAR**.
To change the current entry, press **CLEAR** and enter the new number.
5. Press **STORE**.
6. To program another location, press **NEXT** or **PREV**, or **SELECT** and the desired **location number**.
7. Repeat steps 4 through 6.
8. Press **END**.

Conditions

- There is a maximum of 20 special carrier numbers. Each carrier number has a maximum of seven digits, consisting of **0 through 9**, *****, and **#**. You can also use the PAUSE button to enter a wild card character. It will be displayed as "X".

Features Guide References

Pause Insertion, Automatic
Toll Restriction for Special Carrier Access

[332] Extra Entry Table Selection

Description

Selects the code table which enables an extra 400 entries within Denied or Except Code Table.

Selection

- **Deny / Except**
- Level number: **2 through 6**

Default

Except - 2

Programming

1. Enter **332**.
Display: 332 TRS EXTRA +
2. Press **NEXT**.
Display example: Table:Except-2
3. Keep pressing **SELECT** until the desired selection is displayed.
4. Press **➡** to enter a level number.
5. Enter a **level number**.
Display example: Table:Except-3
6. Press **STORE**.
7. Press **END**.

Conditions

- There is a maximum of either 420 toll call numbers for Denied Code Table or a maximum of 405 toll call numbers for Excepted Code Table.

Features Guide References

Toll Restriction

[333] TRS Entry Code Assignment for Extra Table

Description

This program allows you to specify the numbers for extra Denied or Excepted Code Table for expansion.

Selection

- Location number: **001 through 400**
- Toll call number: **10 digits (max.)**

Default

All locations — Not stored

Programming

1. Enter **333**.
Display: 333 TRS EXTRA -
2. Press **NEXT**.
Display: Location NO?→
3. Enter a **location number**.
To enter location number 001, you can also press **NEXT**.
Display example: 001:Not Stored
4. Enter a **toll call number**.
To delete the current entry, press **CLEAR**.
To change the current entry, press **CLEAR** and enter the new number.
5. Press **STORE**.
6. To program another location number, press **NEXT** or **PREV**, or **SELECT** and the desired **location number**.
7. Repeat steps 4 through 6.
8. Press **END**.

Conditions

- There is a maximum of either 420 toll call numbers for Denied Code Table or a maximum of 405 toll call numbers for Excepted Code Table. Each number has a maximum of ten digits, consisting of **0 through 9**, and *****. The character "*****" can be used as a wild card character.

Features Guide References

Toll Restriction

[334] Emergency Dial Number Set

Description

Stores up to ten emergency call numbers.

Emergency numbers are not subject to toll restriction, Account Code — Verified mode and Electronic Station Lockout.

Selection

- Location number: **01 through 10**
- Emergency number: **24 digits (max.)**

Default

Location 01 = 911, Other location = Not stored

Programming

1. Enter **334**.

Display: 334 EMERGENCY #

2. Press **NEXT**.

Display: Location NO? →

3. Enter a **location number**.

To enter location number 01, you can also press **NEXT**.

Display example: 01:911

4. Enter an **emergency number**.

To delete the current entry, press **CLEAR**.

To change the current entry, press **CLEAR** and enter the new number.

5. Press **STORE**.

6. To program another location, press **NEXT** or **PREV**, or **SELECT** and the desired **location number**.

7. Repeat steps 4 through 6.

8. Press **END**.

Conditions

- Each emergency number has a maximum of 24 digits, consisting of **0 through 9**.

Features Guide References

Toll Restriction

2.5 Outside Line Programming

[400] Outside Line Connection Assignment

Description

Used to identify the outside lines which are connected to the system. This prevents users from originating a call to a line which is not connected.

Selection

- Outside line (CO) number: **01 through 12, *** (*=all outside lines)
- **Connect / No Connect**

Default

All outside lines — Connect

Programming

1. Enter **400**.
Display: 400 CO CONNECT
2. Press **NEXT**.
Display: CO Line NO?
3. Enter an **outside line number**.
To enter outside line number 01, you can also press **NEXT**.
Display example: C001:Connect
4. Keep pressing **SELECT** until the desired selection is displayed.
5. Press **STORE**.
6. To program another outside line, press **NEXT** or **PREV**, or **SELECT** and the desired **outside line number**.
7. Repeat steps 4 through 6.
8. Press **END**.

Conditions

- To assign all outside lines to one selection, press the ***** key in step 3. In this case, the display shows the contents programmed for outside line 01.

Features Guide References

Outside Line Connection Assignment

[401] Outside Line Group Assignment

Description

Each outside line must be assigned to an outside line group. This program defines the outside line group assignment for each outside line. For example, if there are multiple telephone service companies available, the outside lines can be grouped by company.

Selection

- Outside line (CO) number: **01 through 12, *** (*=all outside lines)
- Outside line group (TRG) number: **1 through 8**

Default

CO01 — TRG 1;
CO02 — TRG 2;
CO03 — TRG 3;
CO04 — TRG 4;
CO05 — TRG 5;
CO06 — TRG 6;
CO07 — TRG 7;
CO08 through CO12 — TRG 8

Programming

1. Enter **401**.
Display: 401 CO GROUP 1-8
2. Press **NEXT**.
Display: CO Line NO?→
3. Enter an **outside line number**.
To enter outside line number 01, you can also press **NEXT**.
Display example: CO01:TRG1
4. Enter the **outside line group number**.
To change the current entry, enter the new outside line group number.
5. Press **STORE**.
6. To program another outside line, press **NEXT** or **PREV**, or **SELECT** and the desired **outside line number**.
7. Repeat steps 4 through 6.
8. Press **END**.

Conditions

- To assign all outside lines to one outside line group, press the ✖ key in step 3. In this case, the display shows the contents programmed for outside line 01.

Features Guide References

Outside Line Group

[402] Dial Mode Selection

Description

Each outside line can be programmed for DTMF (Dual Tone Multi-Frequency), pulse (rotary) or call blocking. This program assigns your choice to each line.

DTMF:

The dialing signals from an extension, either tone or pulse, are converted to tone signals and transmitted to the outside line.

Pulse:

The dialing signals from an extension, either tone or pulse, are converted to pulse signals and transmitted to the outside line.

Call blocking:

If your central office can receive both DTMF and pulse signals but you are contracted for pulse, select this mode. When dialing on the line with a touch tone telephone, only the pulse signals are sent to the outside line.

Selection

- Outside line (CO) number: **01 through 12, *** (*=all outside lines)
- **DTMF / Pulse / C. Block** (call blocking)

Default

All outside lines — DTMF

Programming

1. Enter **402**.
Display: 402 DIAL MODE
2. Press **NEXT**.
Display: CO Line NO?→
3. Enter an **outside line number**.
To enter outside line number 01, you can also press **NEXT**.
Display example: CO01:DTMF
4. Keep pressing **SELECT** until the desired selection is displayed.
5. Press **STORE**.
6. To program another outside line, press **NEXT** or **PREV**, or **SELECT** and the desired **outside line number**.
7. Repeat steps 4 through 6.
8. Press **END**.

Conditions

- To assign all lines to one selection, press the * key in step 3. In this case, the display shows the contents programmed for outside line 01.
- If DTMF is assigned, set the DTMF time of the line in program [404] DTMF Time.
- If pulse or call blocking is assigned, set the pulse speed of the line in program [403] Pulse Speed Selection, and set the pulse break ratio and inter-digit pause in program [990] System Additional Information, Area 02 - Bit 7 and in Area 02 - Bit 12, 11, if necessary.

Features Guide References

Dial Type Selection

[403] Pulse Speed Selection

Description

An outside line set for pulse or call blocking mode in program [402] Dial Mode Selection can have two pulse rates, 10 pps (low) and 20 pps (high). This program sets the pulse speed for each outside line set to pulse or call blocking mode.

Selection

- Outside line (CO) number: **01 through 12**, * (*=all outside lines)
- **10 pps / 20 pps**

Default

All outside lines — 10 pps

Programming

1. Enter **403**.
Display: 403 PULSE SPEED
2. Press **NEXT**.
Display: CO Line NO?→
3. Enter an **outside line number**.
To enter outside line number 01, you can also press **NEXT**.
Display example: CO01:10pps
4. Keep pressing **SELECT** until the desired selection is displayed.
5. Press **STORE**.
6. To program another outside line, press **NEXT** or **PREV**, or **SELECT** and the desired **outside line number**.
7. Repeat steps 4 through 6.
8. Press **END**.

Conditions

- To assign all outside lines to one selection, press the * key in step 3. In this case, the display shows the contents programmed for outside line 01.
- The pulse speed required is determined by the outside or PBX line.
- Program [990] System Additional Information, Area 02 - Bit 7 and 12, 11 are used to select a pulse break ratio and inter-digit pause, if needed.

Features Guide References

Dial Type Selection

[404] DTMF Time

Description

An outside line set to DTMF (Dual Tone Multi-Frequency) mode in program [402] Dial Mode Selection can have two settings. This program sets the duration of the DTMF signals sent to an outside line to DTMF mode.

Selection

- Outside line (CO) number: **01 through 12, *** (*=all outside lines)
- Time (milliseconds): **80 / 160**

Default

All outside lines — 80 msec

Programming

1. Enter **404**.
Display: 404 DTMF TIME
2. Press **NEXT**.
Display: CO Line NO?→
3. Enter an **outside line number**.
To enter outside line number 01, you can also press **NEXT**.
Display example: CO01: 80msec
4. Keep pressing **SELECT** until the desired selection is displayed.
5. Press **STORE**.
6. To program another outside line, press **NEXT** or **PREV**, or **SELECT** and the desired **outside line number**.
7. Repeat steps 4 through 6.
8. Press **END**.

Conditions

- To assign all outside lines to one selection, press the ***** key in step 3. In this case, the display shows the contents programmed for outside line 01.
- The DTMF time required is determined by the outside line or PBX line.

Features Guide References

Dial Type Selection

[405] CPC Signal Detection Incoming Set

Description

Assigns the expected minimum duration of the Calling Party Control (CPC) Signal on incoming outside calls. If this is programmed, the system disconnects the line when the CPC Signal is detected.

Selection

- Outside line (CO) number: **01 through 12**, * (*=all outside lines)
- Time (milliseconds): **Disable** (no detection) / **100 / 200 / 300 / 400 / 500 / 600**

Default

All outside lines — 400 msec

Programming

1. Enter **405**.
Display: 405 CPC INCOMING
2. Press **NEXT**.
Display: CO Line NO?→
3. Enter an **outside line number**.
To enter outside line number 01, you can also press **NEXT**.
Display example: CO01:400msec
4. Keep pressing **SELECT** until the desired time is displayed.
5. Press **STORE**.
6. To program another outside line, press **NEXT** or **PREV**, or **SELECT** and the desired **outside line number**.
7. Repeat steps 4 through 6.
8. Press **END**.

Conditions

- To assign all outside lines to one selection, press the * key in step 3. In this case, the display shows the contents programmed for outside line 01.
- You may disable CPC Signal Detection for an outside line.
- Program [415] CPC Signal Detection Outgoing Set is used to program CPC Signal Detection for outgoing outside calls.

Features Guide References

Calling Party Control (CPC) Signal Detection

Direct Inward System Access (DISA)

[406] Caller ID Assignment

Description

Enables the Caller ID feature for the outside lines to which a Caller ID Service is offered by a Central Office by contract.

Selection

- Outside line (CO) number: **01 through 12, *** (*=all outside lines)
- **Enable / Disable**

Default

All outside lines — Disable

Programming

1. Enter **406**.
Display: 406 CALLER ID CO
2. Press **NEXT**.
Display: CO Line NO?→
3. Enter an **outside line number**.
To enter outside line number 01, you can also press **NEXT**.
Display example: CO01:Disable
4. Keep pressing **SELECT** until the desired selection is displayed.
5. Press **STORE**.
6. To program another outside line, press **NEXT** or **PREV**, or **SELECT** and the desired **outside line number**.
7. Repeat steps 4 through 6.
8. Press **END**.

Conditions

- To assign all outside lines to one selection, press the ***** key in step 3. In this case, the display shows the contents programmed for outside line 01.
- The following programs are used to program Caller ID feature: [110] Caller ID Code Set and [111] Caller ID Name Set.

Features Guide References

Caller ID

[407-408] DIL 1:1 Extension — Day / Night

Description

The Direct In Lines (DIL) 1:1 feature allows incoming outside calls to be directed to a specific extension. When an outside line is assigned as DIL 1:1, it is necessary to assign the destination. These programs specify the extension number for day or night mode.

Selection

- Outside line (CO) number: **01 through 12, *** (*=all outside lines)
- Extension number: **2 through 4 digits / Disable** (no DIL 1:1)

Default

All outside lines — Disable — Day / Night

Programming

1. Enter a **program address (407 for day or 408 for night)**.
Display example: 407 DIL 1:1 DAY
2. Press **NEXT**.
Display: CO Line NO?→
3. Enter an **outside line number**.
To enter outside line number 01, you can also press **NEXT**.
Display example: C001:Disable
4. Enter an **extension number**.
To change the current entry, press **CLEAR** and enter the new number.
To disable DIL 1:1, press **CLEAR**.
5. Press **STORE**.
6. To program another outside line, press **NEXT** or **PREV**, or **SELECT** and the desired **outside line number**.
7. Repeat steps 4 through 6.
8. Press **END**.

Conditions

- To assign all outside lines to one selection, press the ***** key in step 3. In this case, the display shows the contents programmed for outside line 01.
- You set the extension numbers in program [003] Extension Number Set, voice mail extension numbers in program [118] Voice Mail Extension Number Assignment, phantom extension numbers in program [124] Phantom Extension Number Assignment or floating numbers of pager(s), DISA (Direct Inward System Access) message(s) and extension group(s) in program [813] Floating Number Assignment.

- If an outside line is also programmed for DIL 1:N in programs [603-604] DIL 1:N Extension and Delayed Ringing — Day / Night, it is regarded as a DIL 1:1 line.

Features Guide References

Direct In Lines (DIL)

Direct Inward System Access (DISA)

Night Service

[409-410] Intercept Extension — Day / Night

Description

Intercept Routing provides an automatic re-direction of calls which cannot or have not been answered (IRNA: Intercept Routing — No Answer). These programs set the destination in both day and night modes for each outside line group.

Selection

- Outside line group (TRG) number: **1 through 8, *** (*=all outside line groups)
- Extension number: **2 through 4 digits / Disable** (no Intercept Routing)

Default

All outside line groups — Disable — Day / Night

Programming

1. Enter a **program address (409 for day or 410 for night)**.
Display example: 409 INTERCEP DAY
2. Press **NEXT**.
Display: TRK GRP NO?→
3. Enter the **outside line group number**.
To enter outside line group number 1, you can also press **NEXT**.
Display example: TRG1:Disable
4. Enter an **extension number**.
To change the current entry, press **CLEAR** and enter the new number.
To disable Intercept Routing, press **CLEAR**.
5. Press **STORE**.
6. To program another outside line group, press **NEXT** or **PREV**, or **SELECT** and the desired **outside line group number**.
7. Repeat steps 4 through 6.
8. Press **END**.

Conditions

- You set the extension numbers in program [003] Extension Number Set, voice mail extension numbers in program [118] Voice Mail Extension Number Assignment, phantom extensions in program [124] Phantom Extension Number Assignment or floating numbers of pager(s), DISA (Direct Inward System Access) message(s) and extension group(s) in program [813] Floating Number Assignment.
- To assign all outside line groups to one selection, press the ***** key in step 3. In this case, the display shows the contents programmed for outside line group 1.

- Program [401] Outside Line Group Assignment is used to assign each outside line to an outside line group.

Features Guide References

Intercept Routing

[411] Host PBX Access Codes

Description

Assigns Host PBX or Centrex access codes. If the system is installed behind a host PBX or a Centrex system, an access code is required to make an outside / Centrex call or to access Centrex features. Up to four codes can be stored for an outside line group assigned to the line.

Selection

- Outside line group (TRG) number:
1 through 8, *
(*=all outside line groups)
- Access code:
1 or 2 digits, four different entries (max.)

Default

All outside line groups — Not stored

Programming

1. Enter **411**.
Display: 411 HOST PBX #'S
2. Press **NEXT**.
Display: TRK GRP NO?→
3. Enter an **outside line group number**.
To enter outside line group number 1, you can also press **NEXT**.
Display example: TRG1: , , ,
4. Enter an **access code**.
To delete the current entry, press **CLEAR**.
To change the current entry, press **CLEAR** and enter the new access code.
Display example: TRG1:01, , ,
5. To enter more access codes for the same outside line group, press **►** and enter the **access codes** until all the required entries are completed.
Display example: TRG1:01,08,10,22
6. Press **STORE**.
7. To program another outside line group, press **NEXT** or **PREV**, or **SELECT** and the desired **outside line group number**.
8. Repeat steps 4 through 7.
9. Press **END**.

Conditions

- This program is only required if a host PBX or Centrex line is connected to the system. Program [401] Outside Line Group Assignment is used to assign the line to an outside line group.
- There is a maximum of four access codes per outside line group. Each code has one or two digits, consisting of **0 through 9**, and *****.
- If conflicting access codes (such as 8 and 81) are stored for the same outside line group, the 1-digit code (8) only will be in effect.
- When the programmed codes are dialed, Automatic Pause Insertion and Toll Restriction are applied to the calls. The programmed pause time (in program [412] Pause Time) is automatically inserted after the access code.
- To assign all outside line groups to one selection, press the ***** key in step 3. In this case, the display shows the contents programmed for outside line group 1.

Features Guide References

External Feature Access

Host PBX Access

Pause Insertion, Automatic

[412] Pause Time

Description

Assigns the length of the pause time. The programmed pause time is automatically inserted after a line access code or a host PBX access code programmed in [411] Host PBX Access Codes or manually inserted if the **PAUSE** button is pressed by the user.

Selection

- Outside line group (TRG) number: **1 through 8, *** (*=all outside line groups)
- Time (seconds): **1.5 / 2.5 / 3.5 / 4.5**

Default

All outside line groups — 1.5 sec

Programming

1. Enter **412**.
Display: 412 PAUSE TIME
2. Press **NEXT**.
Display: TRK GRP NO?→
3. Enter an **outside line group number**.
To enter outside line group number 1, you can also press **NEXT**.
Display example: TRG1:1.5sec
4. Keep pressing **SELECT** until the desired time is displayed.
5. Press **STORE**.
6. To program another outside line group, press **NEXT** or **PREV**, or **SELECT** and the desired **outside line group number**.
7. Repeat steps 4 through 6.
8. Press **END**.

Conditions

- To assign all outside line groups to one selection, press the ***** key in step 3. In this case, the display shows the contents programmed for outside line group 1.
- Program [401] Outside Line Group Assignment is used to assign each outside line to an outside line group.

Features Guide References

Host PBX Access
Pause Insertion, Automatic

[413] Flash Time

Description

Assigns the length of the flash time. If your system is installed behind a host PBX or Centrex line, External Feature Access (EFA) is necessary to obtain their services. To enable it, select a required hooking signal sending time for the outside line group.

Selection

- Outside line group (TRG) number:
1 through 8, *
(*=all outside line groups)
- Time (milliseconds):
Disable (no EFA) / **80 / 96 / 112 / 200 / 300 / 400 / 500 / 600 / 700 / 800 / 900 / 1000 / 1100 / 1200**

Default

All outside line groups — 600 msec

Programming

1. Enter **413**.
Display: 413 FLASH TIME
2. Press **NEXT**.
Display: TRK GRP NO?→
3. Enter an **outside line group number**.
To enter outside line group number 1, you can also press **NEXT**.
Display example: TRG1: 600 msec
4. Keep pressing **SELECT** until the desired time is displayed.
5. Press **STORE**.
6. To program another outside line group, press **NEXT** or **PREV**, or **SELECT** and the desired **outside line group number**.
7. Repeat steps 4 through 6.
8. Press **END**.

Conditions

- You may disable EFA, if not required. The Flash feature will be in effect in place of EFA. Program [414] Disconnect Time is used to select the time required for the Flash feature.
- The flash time required is determined by the central office or the host PBX lines.
- To assign all outside line groups to one selection, press the ***** key in step 3. In this case, the display shows the contents programmed for outside line group 1.

- Program [401] Outside Line Group Assignment is used to assign each outside line to an outside line group.

Features Guide References

External Feature Access

[414] Disconnect Time

Description

Determines the amount of time between successive accesses to the same outside line.

Selection

- Outside line group (TRG) number: **1 through 8, *** (*=all outside line groups)
- Time (seconds): **1.5 / 4.0**

Default

All outside line groups — 1.5 sec

Programming

1. Enter **414**.
Display: 414 DISCONNECT
2. Press **NEXT**.
Display: TRK GRP NO?→
3. Enter an **outside line group number**.
To program outside line group number 1, you can also press **NEXT**.
Display example: TRG1:1.5sec
4. Keep pressing **SELECT** until the desired time is displayed.
5. Press **STORE**.
6. To program another outside line group, press **NEXT** or **PREV**, or **SELECT** and the desired **outside line group number**.
7. Repeat steps 4 through 6.
8. Press **END**.

Conditions

- The disconnect time must be longer than the requirements of the central office or the host PBX.
- To assign all outside line groups to one selection, press the ***** key in step 3. In this case, the display shows the contents programmed for outside line group 1.
- Program [401] Outside Line Group Assignment is used to assign each outside line to an outside line group.

Features Guide References

Flash

[415] CPC Signal Detection Outgoing Set

Description

Enables or disables Calling Party Control (CPC) Signal Detection during the time between the originated outside call and the established outside call. If this is enabled, the system disconnects the line with the time set in program [405] CPC Signal Detection Incoming Set when the CPC Signal is detected.

Selection

- Outside line (CO) number: **01 through 12, *** (*=all outside lines)
- **Enable** (detection) / **Disable** (no detection)

Default

Disable

Programming

1. Enter **415**.
Display: 415 CPC OUTGOING
2. Press **NEXT**.
Display: CO Line NO?→
3. Enter an **outside line number**.
To enter outside line number 01, you can also press **NEXT**.
Display example: C001:Disable
4. Keep pressing **SELECT** until the desired selection is displayed.
5. Press **STORE**.
6. To program another outside line, press **NEXT** or **PREV**, or **SELECT** and the desired **outside line number**.
7. Repeat steps 4 through 6.
8. Press **END**.

Conditions

- Some central offices (CO) may send CPC-like signals during the dialing sequence and an attempt to make a call may be terminated. If your CO is such a type, select "Disable".
- Program [405] CPC Signal Detection Incoming Set is used to set CPC Signal Detection Time.
- To assign all outside lines to one selection, press the * key in step 3. In this case, the display shows the contents programmed for outside line 01.

Features Guide References

Calling Party Control (CPC) Signal Detection

Direct Inward System Access (DISA)

[417] Outside Line Name Assignment

Description

Assigns names of the company or customer to each outside line so that the operator or extension user can find the destination which the caller is trying to reach before answering. If Caller ID is assigned, each extension can select either the initial display, Caller ID or line name.

Selection

- Outside line (CO) number: **01 through 12, *** (*=all outside lines)
- Name: **10 characters (max.)**

Default

All outside lines — Not stored

Programming

1. Enter **417**.
Display: 417 CO LINE NAME
2. Press **NEXT**.
Display: CO Line NO?→
3. Enter an **outside line number**.
To enter outside line number 01, you can also press **NEXT**.
Display example: C001:Not Stored
4. Enter a **name**.
For entering characters, see Section 1.4 Entering Characters.
To delete the current entry, press **CLEAR**.
To change the current entry, press **CLEAR** and enter the new name.
5. Press **STORE**.
6. To program another outside line, press **NEXT** or **PREV**, or **SELECT** and the desired **outside line number**.
7. Repeat steps 4 through 6.
8. Press **END**.

Conditions

- There is a maximum of 12 names. Each name has a maximum of 10 characters.
- To assign all outside lines to one selection, press the ***** key in step 3. In this case, the display shows the contents programmed for outside line 01.
- You can select the initial display, Caller ID or outside line name, by Station Programming.

Features Guide References

Display, Call Information

[440] Line Hunting Sequence

Description

Assigns the hunting sequence of idle lines, seizing from the smallest to the largest line number or vice versa in an outside line group, on an outside line group basis.

Selection

- Outside line group (TRG) number:
1 through 8, * (*=all outside line groups)
- **Small → Large / Large → Small**

Default

All outside line groups – from Large to Small

Programming

1. Enter **440**.
Display: 440 LINE HUNT
2. Press **NEXT**.
Display: TRK GRP NO?→
3. Enter an **outside line group number**.
To enter outside line group number 1, you can also press **NEXT**.
Display example: TRG1:Large>Small
4. Keep pressing **SELECT** until the desired selection is displayed.
5. Press **STORE**.
6. To program another outside line group, press **NEXT** or **PREV**, or **SELECT** and the desired **outside line group number**.
7. Repeat steps 4 through 6.
8. Press **END**.

Conditions

- The default setting (Large → Small) may often cause a busy situation between two PBXs, as the same line may be seized by both sides simultaneously. In this case, we recommend changing the setting of either PBX to Small → Large.

Features Guide References

None

[457-458] DIL 1:1 — Lunch / Break Group

Description

Assigns a lunch / break group to each DIL1:1 destination.

Selection

- Outside (CO) line number: **01 through 12**
- Group number: **1 through 8**

Default

All outside lines — Blank

Programming

For Lunch

1. Enter **457**.
Display: 457 DIL 1:1 LUN
2. Press **NEXT**.
Display: CO Line NO?→
3. Enter an **outside line number**.
To enter outside line number 01, you can also press **NEXT**.
Display example: CO01:
4. Enter a **group number**.
To change the current entry, press **CLEAR** and the new number.
Display example: CO01:1
5. Press **STORE**.
6. To program another location, press **NEXT** or **PREV**.
7. Repeat steps 4 through 6.
8. To program another outside line, press **SELECT** and the desired **outside line number**.
9. Repeat steps 4 through 8.
10. Press **END**.

For Break

1. Enter **458**.
Display: 458 DIL 1:1 BRK
2. Press **NEXT**.
Display: CO Line NO?→

3. Enter an **outside line number.**

To enter outside line number 01, you can also press **NEXT**.

Display example: C001:

4. Enter a **group number.**

To change the current entry, press **CLEAR** and the new number.

Display example: C001:1

5. Press **STORE.**

6. To program another location, press **NEXT or **PREV**.**

7. Repeat steps 4 through 6.

8. To program another outside line, press **SELECT and the desired **outside line number**.**

9. Repeat steps 4 through 8.

10. Press **END.**

Conditions

- If a destination for this programming is not assigned, the assignment for DIL 1:1 (Day) / DIL 1:N performs in day mode as usual.

Features Guide References

Lunch / Break Service

Night Service

[462] Caller ID Call Waiting Assignment

Description

Enables or disables receiving a caller's information sent from the Central Office with a Call Waiting tone.

Selection

- Outside line (CO) number: **01 through 12, *** (*=all outside lines)
- **Enable / Disable**

Default

All outside lines — Enable

Programming

1. Enter **462**.
Display: 462 C.W CID
2. Press **NEXT**.
Display: CO Line NO?→
3. Enter an **outside line number**.
To enter outside line number 01, you can also press **NEXT**.
Display example: CO01:Enable
4. Keep pressing **SELECT** until the desired selection is displayed.
5. Press **STORE**.
6. To program another outside line, press **NEXT** or **PREV**, or **SELECT** and the desired **outside line number**.
7. Repeat steps 4 through 6.
8. Press **END**.

Conditions

- If you set program [406] Caller ID Assignment to "Disable", you cannot receive a caller's information even though you have set this program to "Enable".

Features Guide References

Call Log, Incoming
Caller ID
Caller ID Call Waiting

[463-464] DIL 1:1 Extension — Lunch / Break

Description

The DIL 1:1 feature allows incoming outside calls to be directed to a specific extension. These programs specify the extension number for lunch or break mode. If this program has been assigned to "Disable", the system selects the destination assigned in the program [457-458] DIL 1:1 — Lunch / Break Group.

Selection

- Outside line (CO) number: **01 through 12, *** (*=all outside lines)
- Extension number: **2 through 4 digits / Disable** (no DIL 1:1)

Default

All outside lines — Disable — Lunch / Break

Programming

1. Enter a **program address (463 for lunch or 464 for break)**.
Display example: 463 1:1 LUN EXT
2. Press **NEXT**.
Display: CO Line NO?→
3. Enter an **outside line number**.
To enter outside line number 01, you can also press **NEXT**.
Display example: C001:Disable
4. Enter an **extension number**.
To change the current entry, press **CLEAR** and enter the new number.
To disable DIL 1:1, press **CLEAR**.
5. Press **STORE**.
6. To program another outside line, press **NEXT** or **PREV**, or **SELECT** and the desired **outside line number**.
7. Repeat steps 4 through 6.
8. Press **END**.

Conditions

- To assign all outside lines to one selection, press the ***** key in step 3. In this case, the display shows the contents programmed for outside line 01.
- You set the extension numbers in program [003] Extension Number Set, voice mail extension numbers in program [118] Voice Mail Extension Number Assignment, phantom extension numbers in program [124] Phantom Extension Number Assignment

or floating numbers, DISA (Direct Inward System Access) and extension group in program [813] Floating Number Assignment.

Features Guide References

Direct In Lines (DIL)

Direct Inward System Access (DISA)

Lunch / Break Service

Night Service

2.6 COS Programming

[500]-[501] Toll Restriction Level — Day / Night

Description

Each extension must be assigned a Class of Service (COS). These programs set the toll restriction value for each COS in day or night mode.

Selection

- COS number: **1 through 8, *** (*=all COS)
- Level number: **1 through 8**

Default

COS 1 through 7 — Level 1 — Day / Night;
COS 8 — Level 7 — Day / Night

Programming

1. Enter a **program address (500 for day or 501 for night)**.
Display example: 500 TRS DAY LVL
2. Press **NEXT**.
Display: COS NO?→
3. Enter a **COS number**.
To enter COS number 1, you can also press **NEXT**.
Display example: COS1:1
4. Enter a **level number**.
To change the current entry, press **CLEAR** and enter the new number.
5. Press **STORE**.
6. To program another COS, press **NEXT** or **PREV**, or **SELECT** and the desired **COS number**.
7. Repeat steps 4 through 6.
8. Press **END**.

Conditions

- To assign all COS to one selection, press the ***** key in step 3. In this case, the display shows the contents programmed for COS 1.
- Program [601] Class of Service is used to assign a Class of Service to each extension.

Features Guide References

Night Service
Toll Restriction

[502] Extension-to-Outside Line Call Duration Limit

Description

This program allows you to restrict the duration of outside calls on a Class of Service (COS) basis.

Selection

- COS number:
1 through 8, * (*=all COS)
- **Disable** (no limit) / **Enable** (limit)

Default

All COS — Disable

Programming

1. Enter **502**.
Display: 502 EXT-CO TIMER
2. Press **NEXT**.
3. Display: COS NO?→
4. Enter a **COS number**.
To enter COS number 1, you can also press **NEXT**.
Display example: COS1:Disable
5. Keep pressing **SELECT** until the desired selection is displayed.
6. Press **STORE**.
7. To program another COS, press **NEXT** or **PREV**, or **SELECT** and the desired **COS number**.
8. Repeat steps 4 through 6.
9. Press **END**.

Conditions

- An outside call originated or answered by the programmed extension user is disconnected when the time specified in program [205] Extension-to-Outside Line Call Duration Time expires.
- Extensions in limited classes cannot establish an outside-to-outside call, that is, cannot transfer / forward an outside call to another CO line or perform an Unattended Conference.
- To assign all COS to one selection, press the ***** key in step 3. In this case, the display shows the contents programmed for COS 1.
- Program [601] Class of Service is used to assign a Class of Service to each extension.

- Program [990] System Additional Information, Area 02 - Bit 2 is used to program Limited Call Duration to be done for outgoing calls only.

Features Guide References

Call Forwarding — to Outside Line

Call Transfer, Screened — to Outside Line

Conference, Unattended

Limited Call Duration

[503] Call Transfer to Outside Line

Description

This program determines which Classes of Services (COS) are allowed to perform the Call Transfer to Outside Line function.

Selection

- COS number: **1 through 8**, * (*=all COS)
- **Enable / Disable**

Default

All COS — Disable

Programming

1. Enter **503**.
Display: 503 CALL XFER CO
2. Press **NEXT**.
Display: COS NO?→
3. Enter a **COS number**.
To enter COS number 1, you can also press **NEXT**.
Display example: COS1:Disable
4. Keep pressing **SELECT** until the desired selection is displayed.
5. Press **STORE**.
6. To program another COS, press **NEXT** or **PREV**, or **SELECT** and the desired **COS number**.
7. Repeat steps 4 through 6.
8. Press **END**.

Conditions

- To assign all COS to one selection, press the * key in step 3. In this case, the display shows the contents programmed for COS 1.
- Program [601] Class of Service is used to assign a Class of Service to each extension.

Features Guide References

Call Transfer, Screened — to Outside Line

[504] Call Forwarding to Outside Line

Description

This program determines which Classes of Services (COS) are allowed to perform the Call Forwarding to Outside Line function.

Selection

- COS number: **1 through 8, *** (*=all COS)
- **Disable / Enable**

Default

All COS — Disable

Programming

1. Enter **504**.
Display: 504 CALL FWD CO
2. Press **NEXT**.
Display: COS NO?→
3. Enter a **COS number**.
To enter COS number 1, you can also press **NEXT**.
Display example: COS1:Disable
4. Keep pressing **SELECT** until the desired selection is displayed.
5. Press **STORE**.
6. To program another COS, press **NEXT** or **PREV**, or **SELECT** and the desired **COS number**.
7. Repeat steps 4 through 6.
8. Press **END**.

Conditions

- To assign all COS to one selection, press the ***** key in step 3. In this case, the display shows the contents programmed for COS 1.
- Program [601] Class of Service is used to assign a Class of Service to each extension.

Features Guide References

Call Forwarding — to Outside Line

[505] Executive Busy Override

Description

Determines which Classes of Services (COS) are allowed to perform Executive Busy Override — Extension / Outside Line. Executive Busy Override allows the user to interrupt an established call.

Selection

- COS number: **1 through 8, *** (*=all COS)
- **Disable / Enable**

Default

All COS — Disable

Programming

1. Enter **505**.
Display: 505 EXEC BSY OR
2. Press **NEXT**.
Display: COS NO?→
3. Enter a **COS number**.
To enter COS number 1, you can also press **NEXT**.
Display example: COS1:Disable
4. Keep pressing **SELECT** until the desired selection is displayed.
5. Press **STORE**.
6. To program another COS, press **NEXT** or **PREV**, or **SELECT** and the desired **COS number**.
7. Repeat steps 4 through 6.
8. Press **END**.

Conditions

- To assign all COS to one selection, press the ***** key in step 3. In this case, the display shows the contents programmed for COS 1.
- Program [601] Class of Service is used to assign a Class of Service to each extension.

Features Guide References

Executive Busy Override — Extension

Executive Busy Override — Outside Line

[506] Executive Busy Override Deny

Description

This program is used to determine which Classes of Services (COS) are allowed to deny Executive Busy Override. Executive Busy Override Deny allows the user to prevent Executive Busy Override — Extension / Outside Line from being executed by another extension user.

Selection

- COS number: **1 through 8, *** (*=all COS)
- **Disable / Enable**

Default

All COS — Enable

Programming

1. Enter **506**.
Display: 506 EXEC BSY DNY
2. Press **NEXT**.
Display: COS NO?→
3. Enter a **COS number**.
To enter COS number 1, you can also press **NEXT**.
Display example: COS1:Enable
4. Keep pressing **SELECT** until the desired selection is displayed.
5. Press **STORE**.
6. To program another COS, press **NEXT** or **PREV**, or **SELECT** and the desired **COS number**.
7. Repeat steps 4 through 6.
8. Press **END**.

Conditions

- To assign all COS to one selection, press the ***** key in step 3. In this case, the display shows the contents programmed for COS 1.
- Program [601] Class of Service is used to assign a Class of Service to each extension.

Features Guide References

Executive Busy Override — Extension

Executive Busy Override — Outside Line

[507] Do Not Disturb Override

Description

This program determines which Classes of Services (COS) are allowed to perform Do Not Disturb (DND) Override.

Selection

- COS number: **1 through 8**, * (*=all COS)
- **Disable / Enable**

Default

All COS — Disable

Programming

1. Enter **507**.
Display: 507 DND OVERRIDE
2. Press **NEXT**.
Display: COS NO?→
3. Enter a **COS number**.
To enter COS number 1, you can also press **NEXT**.
Display example: COS1:Disable
4. Keep pressing **SELECT** until the desired selection is displayed.
5. Press **STORE**.
6. To program another COS, press **NEXT** or **PREV**, or **SELECT** and the desired **COS number**.
7. Repeat steps 4 through 6.
8. Press **END**.

Conditions

- To assign all COS to one selection, press the * key in step 3. In this case, the display shows the contents programmed for COS 1.
- Program [601] Class of Service is used to assign a Class of Service to each extension.

Features Guide References

Do Not Disturb (DND) Override

[508] Account Code Entry Mode

Description

There are three account code modes: Option, Verified-All Calls and Verified-Toll Restriction Override. This program determines the mode to be used by each Class of Service (COS).

Option mode:

The user can enter any account code, if needed.

Verified — All Calls mode:

The user must always enter a pre-assigned account code to make an outside call.

Verified — Toll Restriction Override mode:

The user must enter a pre-assigned account code when the user needs to override toll restriction.

Selection

- COS number: **1 through 8, *** (*=all COS)
- **Option / Verify — All** (Verified-All Calls) / **Verify — Toll** (Verified-Toll Restriction Override)

Default

All COS — Option

Programming

1. Enter **508**.
Display: 508 ACC CODE OPT
2. Press **NEXT**.
Display: COS NO?→
3. Enter a **COS number**.
To enter COS number 1, you can also press **NEXT**.
Display example: COS1:Option
4. Keep pressing **SELECT** until the desired selection is displayed.
5. Press **STORE**.
6. To program another COS, press **NEXT** or **PREV**, or **SELECT** and the desired **COS number**.
7. Repeat steps 4 through 6.
8. Press **END**.

Conditions

- To assign all COS to one selection, press the ***** key in step 3. In this case, the display shows the contents programmed for COS 1.

- Program [105] Account Codes is used to define the Account Codes for the Verified modes.
- Program [601] Class of Service is used to assign a Class of Service to each extension.

Features Guide References

Account Code Entry

Toll Restriction Override by Account Code Entry

[510] Night Service Access

Description

Enables or disables switching the Day / Night service on a Class of Service (COS) basis.

Selection

- COS number: **1 through 8**, * (*=all COS)
- **Enable / Disable**

Default

All COS — Disable

Programming

1. Enter **510**.
Display: 510 NITE SERVICE
2. Press **NEXT**.
Display: COS NO?→
3. Enter a **COS number**.
To enter COS number 1, you can also press **NEXT**.
Display example: COS1:Disable
4. Keep pressing **SELECT** until the desired selection is displayed.
5. Press **STORE**.
6. To program another COS, press **NEXT** or **PREV**, or **SELECT** and the desired **COS number**.
7. Repeat steps 4 through 6.
8. Press **END**.

Conditions

- To assign all COS to one selection, press the * key in step 3. In this case, the display shows the contents programmed for COS 1.
- The operator extension can switch the mode regardless of setting.
- Program [601] Class of Service is used to assign a Class of Service to each extension.

Features Guide References

Night Service

[511] PT Programming Level

Description

Regulates station programming, depending on the COS. This programming has two levels as follows.

Level 1: enables all station programming.

Level 2: disables CO button programming in station programming.

Selection

- COS number: **1 through 8, *** (*=all COS)
- **LVL 1 / LVL 2**

Default

All COS — LVL1

Programming

1. Enter **511**.
Display: 511 PITS PGM LVL
2. Press **NEXT**.
Display: COS NO?→
3. Enter a **COS number**.
To enter COS number 1, you can also press **NEXT**.
Display example: COS1:LVL1
4. Keep pressing **SELECT** until the desired selection is displayed.
Display example: COS1:LVL2
5. Press **STORE**.
6. To program another COS, press **NEXT** or **PREV**, or **SELECT** and the desired **COS number**.
7. Repeat steps 4 through 6.
8. Press **END**.

Conditions

- If CO buttons are assigned on level 2 in station programming, the warning tone is heard, the programming initial display appears.
- When station programming is restricted by level 2, CO button programming can be accomplished by using System Programming, [005] Flexible CO Button Assignment.

Features Guide References

None

2.7 Extension Programming

[601] Class of Service

Description

Programs each extension for Class of Service (COS). The COS determines the call handling abilities of each extension.

Selection

- Jack number: **01 through 32**, * (*=all jacks)
- COS number: **1 through 8**

Default

All jacks — COS 1

Programming

1. Enter **601**.
Display: 601 COS #
2. Press **NEXT**.
Display: Jack NO?→
3. Enter a **jack number**.
To enter jack number 01, you can also press **NEXT**.
Display example: #01:COS1
4. Enter a **COS number**.
To change the current entry, enter the new number.
5. Press **STORE**.
6. To program another jack, press **NEXT** or **PREV**, or **SELECT** and the desired **jack number**.
7. Repeat steps 4 through 6.
8. Press **END**.

Conditions

- There is a maximum of eight Classes of Service. Every extension must be assigned to a Class of Service and is subject to the COS Programming of programs [500] through [510] and [991].
- To assign all jacks to one COS, press the * key in step 3. In this case, the display shows the contents programmed for Jack 01.

- Program [017] DISA User Codes is also used to assign a Class of Service to a DISA (Direct Inward System Access) User Code.

Features Guide References

Class of Service (COS)

[602] Extension Group Assignment

Description

Assigns each extension to an extension group. Extension groups are used for Group Call Pickup, Station Hunting, and Paging — Group.

Selection

- Jack number: **01 through 32, *** (*=all jacks)
- Extension group number: **1 through 8**

Default

All jacks — Extension group 1

Programming

1. Enter **602**.
Display: 602 EXT GROUP #
2. Press **NEXT**.
Display: Jack NO?→
3. Enter a **jack number**.
To enter jack number 01, you can also press **NEXT**.
Display example: #01:EXG1
4. Enter the **extension group number**.
To change the current entry, enter the new extension group number.
5. Press **STORE**.
6. To program another jack, press **NEXT** or **PREV**, or **SELECT** and the desired **jack number**.
7. Repeat steps 4 through 6.
8. Press **END**.

Conditions

- There is a maximum of eight extension groups. Each extension can only belong to one group.
- To assign all jacks to one extension group, press the ***** key in step 3. In this case, the display shows the contents programmed for Jack 01.

Features Guide References

Call Pickup, Group
Extension Group

Paging — Group
Station Hunting

[603-604] DIL 1:N Extension and Delayed Ringing — Day / Night

Description

The Direct In Lines (DIL) 1:N feature can be assigned to ring more than one extension. All incoming calls from the programmed outside lines are directed to the specified extensions. These programs assign the extensions and the notification method for each outside line in both day and night modes.

Selection

- Jack number: **01 through 32, *** (*=all jacks)
- Outside line (CO) number: **01 through 12, *** (*=all outside lines)
- **Disable** (disable) / **Immdt** (immediate ringing) / **1RNG** (1 ring delay) / **3RNG** (3 ring delay) / **6RNG** (6 ring delay) / **NoRNG** (no ring)

Default

All jacks — all outside lines — Immediate ringing — Day / Night

Programming

1. Enter a **program address (603 for day or 604 for night)**.

Display example: 603 DIL 1:N DAY

2. Press **NEXT**.

Display: Jack NO?→

3. Enter a **jack number**.

To enter jack number 01, you can also press **NEXT**.

Display example: #01:CO01:Immdt

4. Enter the **outside line number**.

You can also keep pressing **▶** or **◀** until the desired outside line number is displayed.

5. Keep pressing **SELECT** until the desired selection is displayed.

6. Press **STORE**.

7. To program another jack, press **NEXT** or **PREV**, or **SELECT** and the desired **jack number**.

8. Repeat steps 4 through 7.

9. Press **END**.

Conditions

- An extension can be assigned as the destination of as many outside lines as required.
- To assign all jacks or all outside lines to one selection, press the ***** key in step 3 or step 4. In these cases, the display shows the contents programmed for Jack 01 or for outside line 01.

- There are six notification methods:
 - a)** Immediate ringing: rings immediately
 - b)** 1 ring delay
 - c)** 3 ring delay
 - d)** 6 ring delay
 - e)** No ring: only the indicator flashes
 - f)** Disable: no incoming call
- When you change the jack number by pressing **NEXT** or **PREV**, the outside line number is not changed. Example #03:CO06.....Press **NEXT**.....#03:CO06

Features Guide References

Direct In Lines (DIL)

Night Service

Ringing, Delayed

[605-606] Outgoing Permitted Outside Line Assignment — Day / Night

Description

Determines the outside lines which can be accessed by an extension in both day and night modes. The extension users can make outgoing outside calls using the assigned outside lines.

Selection

- Jack number: **01 through 32, *** (*=all jacks)
- Outside line (CO) number: **01 through 12, *** (*=all outside lines)
- **Enable** (enable) / **Disable** (disable)

Default

All jacks — all outside lines — Enable — Day / Night

Programming

1. Enter a **program address (605 for day or 606 for night)**.
Display example: 605 CO DAY OUT
2. Press **NEXT**.
Display: Jack NO?→
3. Enter a **jack number**.
To enter jack number 01, you can also press **NEXT**.
Display example: #01:CO01:Enable
4. Enter the desired **outside line number**, or keep pressing **▶** or **◀** until the desired outside line is displayed.
To change the current entry, enter the new number.
5. Keep pressing **SELECT** until the desired selection is displayed.
6. Press **STORE**.
7. To program another jack, press **NEXT** or **PREV**, or **SELECT** and the desired **jack number**.
8. Repeat steps 4 through 7.
9. Press **END**.

Conditions

- To assign all jacks or all outside lines to one selection, press the ***** key in step 3 or 4. In these cases, the display shows the contents programmed for Jack 01 or outside line 01.
- To assign no outside line for an extension, press **CLEAR** in step 4.

Features Guide References

Outside Line Connection Assignment — Outgoing
Night Service

[607-608] Doorphone Ringing Assignment — Day / Night

Description

These programs assign the extensions which will ring when a doorphone call is received during the day and night modes. Programmed extensions are also allowed to open the door.

Selection

- Jack number: **01 through 32, *** (*=all jacks)
- Doorphone number: **1 through 4, four entries (max.)**

Default

Jack 01 — All doorphones; Other jacks — no doorphone — Day / Night

Programming

1. Enter a **program address (607 for day or 608 for night)**.
Display example: 607 DOOR SET DAY
2. Press **NEXT**.
Display: Jack NO?→
3. Enter a **jack number**.
To enter jack number 01, you can also press **NEXT**.
Display example: #01:1234
4. Enter the **doorphone numbers**.
To assign no doorphone, press **CLEAR**.
To change the current entry, press **CLEAR** and enter the new doorphone numbers.
5. Press **STORE**.
6. To program another jack, press **NEXT** or **PREV**, or **SELECT** and the desired **jack number**.
7. Repeat steps 4 through 6.
8. Press **END**.

Conditions

- To assign all jacks to one selection, press the ***** key in step 3. In this case, the display shows the contents programmed for Jack 01.

Features Guide References

Door Opener
Doorphone Call
Night Service

[609] Voice Mail Access Codes

Description

Assigns a mailbox number for each extension, only if program [990] System Additional Information, Area 02 - Bit 8 is set to "free".

Selection

- Jack number: **01 through 32**
- Mailbox number: **16 digits (max.)**

Default

All jacks — Not stored

Programming

1. Enter **609**.
Display: 609 V-MAIL CODES
2. Press **NEXT**.
Display: Jack NO?→
3. Enter a **jack number**.
To enter jack number 01, you can also press **NEXT**.
Display example: #01:Not Stored
4. Enter a **mailbox number**.
To delete the current entry, press **CLEAR**.
To change the current entry, press **CLEAR** and enter the new number.
5. Press **STORE**.
6. To program another jack, press **NEXT** or **PREV**, or **SELECT** and the desired **jack number**.
7. Repeat steps 4 through 6.
8. Press **END**.

Conditions

- The system supports a maximum of four jacks for connection to a Voice Processing System as the Voice Mail or Automated Attendant ports.
- Each mailbox number has a maximum of 16 digits, consisting of **0 through 9**, *****, **#** and **PAUSE**.
- To display parts of the mailbox number which have scrolled off the display, press **▶** or **◀**.

Features Guide References

Voice Mail Integration

[610] Live Call Screening Recording Mode Assignment

Description

- Assigns whether to close the mailbox or keep recording the conversation after a call is intercepted.
- This program is available when the Advanced Hybrid System is connected to a Proprietary Telephone capable Panasonic Voice Processing System (one that supports DPT Integration; e.g., KX-TVS50).

Selection

- Jack number: **01 through 32**, * (*=all jacks)
- **Stop Rec / Keep Rec**

Default

All jacks — Stop Rec (Stop recording)

Programming

1. Enter **610**.
Display: 610 LCS REC.MODE
2. Press **NEXT**.
Display: Jack NO?→
3. Enter a **jack number**.
To enter jack number 01, you can also press **NEXT**.
Display example: #01:Stop Rec
4. Keep pressing **SELECT** until the desired selection is displayed.
5. Press **STORE**.
6. To program another jack number, press **NEXT** or **PREV**, or **SELECT** and the desired **jack number**.
7. Repeat steps 4 through 6.
8. Press **END**.

Conditions

- To assign all jacks to one selection, press the * key in step 3. In this case, the display shows the contents programmed for jack 01.

Features Guide References

Live Call Screening (LCS)

Voice Mail Integration (DPT Integration)

[619] Extension Call Forwarding — No Answer Time

Description

Sets a Call Forwarding – No Answer Time for each extension.

Selection

- Jack number: **01 through 32, *** (*=all jacks)
- Number of rings: 0 through 12

Default

All jacks — 0

Programming

1. Enter **619**.
Display: 619 EXT FWD TIME
2. Press **NEXT**.
Display: Jack NO?→
3. Enter a **jack number**.
To enter jack number 01, you can also press **NEXT**.
Display example: #01: 0
4. Enter the **number of rings**.
Display example: #01: 6
5. Press **STORE**.
6. To program another jack, press **NEXT** or **PREV**, or **SELECT** and the desired **jack number**.
7. Repeat steps 4 through 6.
8. Press **END**.

Conditions

- If the number of rings is not changed in this programming, the time assigned on program [202] Call Forwarding — No Answer Time will be used.

Features Guide References

Call Forwarding — No Answer

[620] Lunch / Break Group Assignment

Description

Assigns extensions for a lunch / break group.

A lunch / break group can be assigned to up to 8 extensions (APT / SLT).

Selection

- Group number: **1 through 8**
- Location number: **1 through 8**
- Extension number: **2 to 4 digits**

Default

All groups — Blank

Programming

1. Enter **620**.

Display example: 620 LUN/BRK EXT

2. Press **NEXT**.

Display: Group NO? →

3. Enter a **group number**.

To enter group number 1, you can also press **NEXT**.

Display example: #1-1:

4. Enter the desired **extension number**.

To change the current entry, enter the new number.

Display example: #1-1:101

5. Press **STORE**.

6. To program another location, press **NEXT** or **PREV**, or **SELECT** and the desired **group number**.

7. Repeat steps 4 through 6.

8. Press **END**.

Conditions

- This programming is only meaningful in conjunction with program [457-458] DIL 1:1 — Lunch / Break Group.

Features Guide References

Lunch / Break Service

Night Service

[621] Cordless PT Extension Port

Description

Prevents the cordless PT speakerphone functions from working in the following cases, if connected to extension ports such as KX-T7880, KX-T7885, KX-T7894, KX-T7895;

1. BGM: start or end the BGM.
2. LCS: work on the private mode even if the hands-free mode is set.
3. A voice calling: using a voice calling.
Only Ring-calling can be used.
4. Paging: using the paging features.

Selection

- Jack number: **01 through 32**, * (*=all jacks)
- **Yes (prevent)** / **No (allow)**

Default

All jacks — all outside lines — No

Programming

1. Enter a **621**.
Display example: 621 CORDLESS EXT
2. Press **NEXT**.
Display: Jack NO?→
3. Enter a **jack number**.
To enter jack number 01, you can also press **NEXT**.
Display example: #01:No
4. Keep pressing **SELECT** until the desired selection is displayed.
Display example: #01:Yes
5. Press **STORE**.
6. To program another jack, press **NEXT** or **PREV**, or **SELECT** and the desired **jack number**.
7. Repeat steps 4 through 6.
8. Press **END**.

Conditions

- If "Yes" is selected for a jack for wired PT, the speakerphone functions written in the description do not work. Connect a cordless PT if "Yes" is selected.

Features Guide References

None

[624] Common Area Call Log Check Assignment

Description

Enables or disables checking call logs stored in the common area.

Selection

- Jack number: **01 through 32, *** (*=all jacks)
- **Disable / Enable**

Default

All jacks — Enable

Programming

1. Enter **624**.
Display: 624 CALL LOGGING
2. Press **NEXT**.
Display: Jack NO?→
3. Enter a **jack number**.
To enter jack number 01, you can also press **NEXT**.
Display example: #01:Enable
4. Keep pressing **SELECT** until the desired selection is displayed.
5. Press **STORE**.
6. To program another jack, press **NEXT** or **PREV**, or **SELECT** and enter the desired **jack number**.
7. Repeat steps 4 through 6.
8. Press **END**.

Conditions

None

Features Guide References

Call Log, Incoming

[625] Room Monitor Assignment

Description

Assigns which extensions can be monitored by another telephone.

Selection

- Jack number: **01 through 32**, * (*=all jacks)
- **Disable / Enable**

Default

All jacks — Disable

Programming

1. Enter **625**.
Display: 625 ROOM MONITOR
2. Press **NEXT**.
Display: Jack NO?→
3. Enter a **jack number**.
To enter jack number 01, you can also press **NEXT**.
Display example: #01:Disable
4. Keep pressing **SELECT** until the desired selection is displayed.
5. Press **STORE**.
6. To program another jack, press **NEXT** or **PREV**, or **SELECT** and enter the desired **jack number**.
7. Repeat steps 4 through 6.
8. Press **END**.

Conditions

- The jacks which are assigned to "Disable" cannot accept feature number "7341" for the room monitor feature.

Features Guide References

Room Monitor

2.8 Resource Programming

[800] SMDR Incoming / Outgoing Call Log Printout

Description

Used to determine which calls will produce a Station Message Detail Recording (SMDR) printout.

Selection

- Outgoing calls: **All** (all calls) / **Toll** (toll calls only) / **Off** (no printing)
- Incoming calls: **On** (all calls) / **Off** (no printing)

Default

Outgoing calls — All; Incoming calls — On

Programming

1. Enter **800**.
Display: 800 SMDR IN/OUT
2. Press **NEXT** to program outgoing calls.
Display: Outgoing:All
3. Keep pressing **SELECT** until the desired selection is displayed.
4. Press **STORE**.
5. Press **NEXT** to program incoming calls.
Display: Incoming:On
6. Keep pressing **SELECT** until the desired selection is displayed.
7. Press **STORE**.
8. Press **END**.

Conditions

- It is necessary to connect a printer to the Serial Interface (RS-232C) port provided on the system.
- After connecting a printer, do not press the RETURN key, if provided on the printer, within 10 seconds. Otherwise, the usage of the Serial Interface port is changed to system programming and printing will not occur.
- If "Toll" is selected, the system will print out all the calls starting from the numbers stored in programs [301-305] TRS Denied Code Entry for Levels 2 through 6.

Features Guide References

Station Message Detail Recording (SMDR)

[801] SMDR Format

Description

Used to match the SMDR output to the paper size being used in the printer. Page length determines the number of lines per page. Skip perforation determines the number of lines to be skipped at the end of every page.

Selection

- Page length (lines): **4 through 99**
- Skip perforation (lines): **0 through 95**

Default

Page length — 66; Skip perforation — 0

Programming

1. Enter **801**.
Display: 801 SMDR FORMAT
2. Press **NEXT** to program page length.
Display example: Page Length:66
3. Enter the **page length**.
To change the current entry, press **CLEAR** and enter the new page length.
4. Press **STORE**.
5. Press **NEXT** to program skip perforation.
Display example: Skip Perf: 0
6. Enter the **skip perforation**.
To change the current entry, press **CLEAR** and enter the new skip perforation.
7. Press **STORE**.
8. Press **END**.

Conditions

- The page length should be four lines or more longer than the skip perforation length.
- A title is positioned on the first three lines on every page.
- The programmed format becomes valid only if the Serial Interface (RS-232C) cable is connected. If a printer is already connected, disconnect it and connect again. Otherwise the former format becomes valid.

Features Guide References

Station Message Detail Recording (SMDR)

[802] System Data Printout

Description

Starts or stops printing the system data. All or a specific range of the current system-programmed data is printed out. The ranges are as follows:

Manager:

Manager Programming [000] through [017]

System:

System Programming [100] through [151]

Timers:

Timer Programming [200] through [221]

TRS:

TRS Programming [300] through [334]

Outside line:

CO Line Programming [400] through [464]

COS:

COS Programming [500] through [511]

Extension:

Extension Programming [601] through [625]

Resource:

Resource Programming [800] through [823]

Option:

Option Programming [990] through [991]

Selection

- Printout range number:
 \ast (All) / 0 (Manager) / 1 (System) / 2 (Timer) / 3 (TRS) / 4 (Outside line) / 5 (COS) / 6 (Extension) / 7 (Unused) / 8 (Resource) / 9 (Option)
- **Start / Stop**

Default

Not applicable.

Programming

1. Enter **802**.
 Display: 802 SYSTEM DATA
2. Press **NEXT**.
 Display: Enter Range?→
3. Enter a **printout range number** or \ast for "All".
 Display: Print-Out:Start
4. Press **STORE** to start printing.

Printing starts.

To stop printing, press **SELECT** and go to step 4.

When printing is completed, the display shows:

Display: Print-Out:Finish

5. Press **STORE**.

Display: Print-Out:Stop

6. Press **END**.

Conditions

- It is necessary to connect a printer to the Serial Interface (RS-232C) port provided on the system.
- You may stop printing by pressing the **END** button while records are being printed out.
- You cannot restart the printout while records are being output.

Features Guide References

Station Message Detail Recording (SMDR)

[803] Music Source Use

Description

Assigns the music source to be used for Music on Hold and Background Music (BGM).

Selection

- **Hold / BGM**
- Music source number: **1 through 2 / No Use**

Default

Hold and BGM — Music 1

Programming

1. Enter **803**.
Display: 803 MUSIC SOURCE
2. Press **NEXT** to program Music on Hold.
Display example: Hold:Music1
3. Enter a **music source number**.
To select no music source, press **CLEAR**.
To change the current entry, enter the new music source number.
4. Press **STORE**.
5. Press **NEXT** to program BGM.
Display example: BGM :Music1
6. Enter a **music source number**.
To select no music source, press **CLEAR**.
To change the current entry, enter the new music source number.
7. Press **STORE**.
8. Press **END**.

Conditions

- To disable music, press **CLEAR** in steps 3 and 6.
- Program [804] External Pager BGM is used to enable / disable BGM for each external pager.

Features Guide References

Background Music (BGM)
Background Music (BGM) — External
Music on Hold

[804] External Pager BGM

Description

Used to determine which external pagers will receive Background Music (BGM). BGM — External is turned on and off by the operator or manager.

Selection

- External pager number: **1 through 2**
- **Disable** (sends no BGM) / **Enable** (sends BGM)

Default

All external pagers — Disable

Programming

1. Enter **804**.
Display: 804 EXTERNAL BGM
2. Press **NEXT**.
Display: Pager NO?→
3. Enter an **external pager number**.
To enter pager number 1, you can also press **NEXT**.
Display example: Pager1:Disable
4. Keep pressing **SELECT** until the desired selection is displayed.
5. Press **STORE**.
6. To program another pager, press **NEXT** or **PREV**, or **SELECT** and the desired **external pager number**.
7. Repeat steps 4 through 6.
8. Press **END**.

Conditions

- The external pager is a user-supplied item. Two external pagers can be installed.
- Program [006] Operator / Manager Extension Assignment is used to assign an extension as Operator 1.
- Program [803] Music Source Use is used to select the music source to be used for BGM.

Features Guide References

Background Music (BGM) — External

[805] External Pager Confirmation Tone

Description

Used to remove the confirmation tone for external pagers. The default setting sends confirmation tone 2 to the external pagers before paging is broadcast. This programming applies to all the external pagers.

Selection

On / Off

Default

On

Programming

1. Enter **805**.
Display: 805 EX PAGE TONE
2. Press **NEXT**.
Display example: Tone:On
3. Keep pressing **SELECT** until the desired selection is displayed.
4. Press **STORE**.
5. Press **END**.

Conditions

- The external pager is a user-supplied item. Two external pagers can be installed.

Features Guide References

Confirmation Tone
Paging — All
Paging — External

[806] Serial Interface (RS-232C) Parameters

Description

Assigns the communication parameters for the Serial Interface (RS-232C) interface.

New line code:

Select the code for your printer or personal computer. If your printer or personal computer automatically feeds lines with a carriage return, select "CR". If not, select "CR+LF".

Baud rate:

A baud rate code indicates the data transmission speed from the system to the printer or personal computer.

Word length:

A word length code indicates how many bits compose a character.

Parity:

A parity code indicates what type of parity is used to detect an error in the string of bits composing a character. Make an appropriate selection depending on the requirements of your printer or personal computer.

Stop bit:

A stop bit code indicates the end of a bit string which composes a character. Select an appropriate value depending on the requirements of your printer or personal computer.

Selection

- New line code: **CR+LF / CR**
(CR=Carriage Return, LF=Line Feed)
- Baud rate (baud): **150 / 300 / 600 / 1200 / 2400 / 4800 / 9600 / 19200**
- Word length (bits): **7 / 8**
- Parity bit: **None / Mark / Space / Even / Odd**
- Stop bit length (bits): **1 / 2**

Default

New line code = CR+LF; Baud rate = 9600; Word length = 8;

Parity bit = Mark; Stop bit = 1

Programming

1. Enter **806**.

Display example: 806 RS232 PORT

2. Press **NEXT** to program new line code.

Display example: NL-Code:CR+LF

3. Keep pressing **SELECT** until the desired selection is displayed.

4. Press **STORE**.

5. Press **NEXT** to program baud rate.

Display example: Baud Rate:9600

6. Keep pressing **SELECT** until the desired selection is displayed.
7. Press **STORE**.
8. Press **NEXT** to program word length.
Display example: Word Length:8bits
9. Keep pressing **SELECT** until the desired selection is displayed.
10. Press **STORE**.
11. Press **NEXT** to program parity bit.
Display example: Parity:Mark
12. Keep pressing **SELECT** until the desired selection is displayed.
13. Press **STORE**.
14. Press **NEXT** to program stop bit.
Display example: Stop Bit:1bit
15. Keep pressing **SELECT** until the desired selection is displayed.
16. Press **STORE**.
17. Press **END**.

Conditions

- The following combinations are invalid.

Parity	Word Length	Stop Bit
Mark	8	2
Space	8	1
Space	8	2

- The program address of the out-of-service system port is unacceptable.

Features Guide References

Station Message Detail Recording (SMDR)

[809] DISA Security Type

Description

Assigns the security mode for outside calls attempted by the DISA (Direct Inward System Access) caller. There are three modes: Non Security, Trunk Security (outside line security), and All Security. Non Security mode allows the caller to access an outside line without dialing a DISA user code. Trunk Security mode requires the caller to enter a DISA User Code before making an outside call. All Security mode requires the caller to enter a DISA user code before making both an outside call and an intercom call.

Selection

Non (non security) / **Trunk** (trunk security) / **All** (all security)

Default

Trunk (Outside Line) Security

Programming

1. Enter **809**.
Display: 809 DISA SECURE
2. Press **NEXT**.
Display example: Security:Trunk
3. Keep pressing **SELECT** until the desired selection is displayed.
4. Press **STORE**.
5. Press **END**.

Conditions

- Program [017] DISA User Codes is used to program DISA User Codes.

Features Guide References

Direct Inward System Access (DISA)

[810] DISA Tone Detection

Description

Enables or disables Tone Detection for outside-to-outside line calls via the Direct Inward System Access (DISA) feature. Enabling tone detection allows the system to detect the end of the call.

Selection

Enable / Disable

Default

Enable

Programming

1. Enter **810**.
Display: 810 DISA TONE
2. Press **NEXT**.
Display: Tone DTC:Enable
3. Keep pressing **SELECT** until the desired selection is displayed.
4. Press **STORE**.
5. Press **END**.

Conditions

None

Features Guide References

Direct Inward System Access (DISA)

[812] DISA DTMF Repeat

Description

Selects whether the system transmits DTMF (Dual Tone Multi-Frequency) signals directly to the central office (CO) or if the system repeats the DTMF signals to CO in order to adjust gain. This can be done for an outside-to-outside line call via the Direct Inward System Access (DISA) feature during dialing and / or during an established call.

Selection

- **Dial** (during dialing) / **Call** (during an established call)
- Mode: **Repeat** / **Through**

Default

Dial and Call — Repeat

Programming

1. Enter **812**.
Display: 812 DISA DTMF
2. Press **NEXT** to program the mode during dialing.
To program the mode during an established call, press **NEXT** again.
Display example: Dial:Repeat
3. Keep pressing **SELECT** until the desired selection is displayed.
4. Press **STORE**.
5. Press **NEXT** to program the mode during an established call.
Display example: Call:Repeat
6. Keep pressing **SELECT** until the desired selection is displayed.
7. Press **STORE**.
8. Press **END**.

Conditions

None

Features Guide References

Direct Inward System Access (DISA)

[813] Floating Number Assignment

Description

Assigns the floating numbers for External Pagers, DISA (Direct Inward System Access) messages and extension groups. These numbers can be used the same way extension numbers are used for station access.

Selection

- Floating station: **Pager1 through 2 / DISA1 / DISA2 / E-Group 1 through 8**
- Floating number: **2 to 4 digits**

Default

Pager 1=196; Pager 2=197; DISA 1=198; DISA 2=298; E-Group 1=191; E-Group 2=192; E-Group 3=193; E-Group 4=194; E-Group 5=291; E-Group 6=292; E-Group 7=293; E-Group 8=294;

Programming

1. Enter **813**.
Display: 813 FLOATING #
2. Press **NEXT** to program Pager 1.
Display example: Pager1 :EXT196
To program another floating station, keep pressing **NEXT** or **PREV** until the desired floating station is displayed.
3. Enter a **floating number**.
To change the current entry, press **CLEAR** and enter the new floating number.
4. Press **STORE**.
5. To program another floating station, keep pressing **NEXT** or **PREV** until the desired floating station is displayed.
6. Repeat steps 3 through 5.
7. Press **END**.

Conditions

- A floating number is composed of two to four numerical digits, **0 through 9**.
- The first one or two digits of the floating numbers are subject to program [100] Flexible Numbering, (01) through (16) 1st through 16th hundred extension blocks.
- Floating numbers and extension numbers should be unique. Double entry and incompatible entry for these numbers are invalid. Valid entry example: 10 and 11, 10 and 110. Invalid entry example: 10 and 106.
To avoid making an invalid entry, check the other extension numbers in programs

[003] Extension Number Set, [118] Voice Mail Extension Number Assignment and [124] Phantom Extension Number Assignment. The default of each extension number is as follows:

[003] Extension Number Set

101 through 132

[118] VM Extension Number Assignment

165 through 172

[124] Phantom Extension Number Assignment

Not assigned.

- You cannot leave an entry empty.

Features Guide References

Floating Station

[815] DISA Built-in Auto Attendant

Description

Assigns the DISA (Direct Inward System Access) built-in auto attendant number. The extension number and the floating number can be assigned as a one digit number and used as a DISA built-in auto attendant number.

Selection

- DISA built-in auto attendant number: **0 through 9**
- Extension number / Floating number: **2 through 4 digits**

Default

Disable

Programming

1. Enter **815**.
Display: 815 DISA AA
2. Press **NEXT**.
Display example: Dial NO?→
3. Enter a **DISA built-in auto attendant number**.
To enter DISA AA number 0, you can also press **NEXT**.
Display example: Dial 0:Disable
4. Enter an **extension or floating number**.
To change the current entry, press **CLEAR** and enter the new floating number.
Display example: Dial 0:EXT112
5. Press **STORE**.
6. To program another DISA AA number, press **NEXT** or **PREV**, or **SELECT** and the desired DISA AA number.
7. Repeat steps 3 through 6.
8. Press **END**.

Conditions

- This system can store up to ten programmable DISA built-in auto attendant numbers.

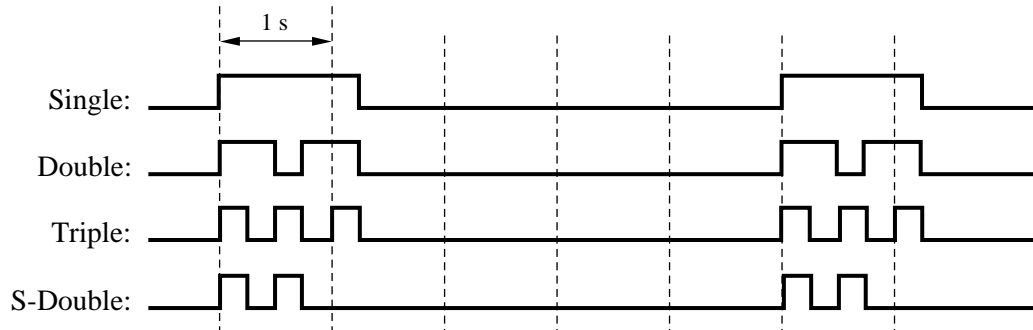
Features Guide References

Direct Inward System Access (DISA)

[818] Doorphone Ringing / Tone Pattern Selection

Description

Assigns an incoming doorphone call ringing pattern for each doorphone. There are four types of patterns as follows.



Selection

- Doorphone number: **1 through 4, *** (*=all doorphones)
- **Single / Double / Triple / S-Double**

Default

All doorphones — Triple

Programming

1. Enter **818**.
Display: 818 DOOR R-TONE
2. Press **NEXT**.
Display: Door NO?→
3. Enter a **doorphone number**.
To enter doorphone number 1, you can also press **NEXT**.
Display example: DP1 :Triple
4. Keep pressing **SELECT** until the desired selection is displayed.
5. Press **STORE**.
6. To program another doorphone, press **NEXT** or **PREV**, or **SELECT** and enter the desired **doorphone number**.
7. Repeat steps 4 through 6.
8. Press **END**.

Conditions

- PT users will hear the assigned pattern tone instead of ringing.

Features Guide References

Doorphone Call

[819] Doorphone Access Tone Selection

Description

Enables or disables sending a doorphone access tone to a monitored doorphone. If enabled, the access tone is heard from the doorphone when monitoring starts.

Selection

- Doorphone number: **1 through 4, *** (*=all doorphones)
- **Enable / Disable**

Default

All doorphones — Enable

Programming

1. Enter **819**.
Display: 819 DOOR A-TONE
2. Press **NEXT**.
Display: Door NO?→
3. Enter a **doorphone number**.
To enter doorphone number 1, you can also press **NEXT**.
Display example: DP1 :Enable
4. Keep pressing **SELECT** until the desired selection is displayed.
5. Press **STORE**.
6. To program another doorphone, press **NEXT** or **PREV**, or **SELECT** and enter the desired **doorphone number**.
7. Repeat steps 4 through 6.
8. Press **END**.

Conditions

None

Features Guide References

Doorphone Call
Room Monitor

[820] Doorphone Ringing Time

Description

Selects the doorphone ringing time.

Selection

- Doorphone number: **1 through 4, *** (*=all doorphones)
- **15sec / 30sec** (seconds)

Default

All doorphones — 30sec

Programming

1. Enter **820**.
Display: 820 DOOR R-TIME
2. Press **NEXT**.
Display: Door NO?→
3. Enter a **doorphone number**.
To enter doorphone number 1, you can also press **NEXT**.
Display example: DP1 :30sec
4. Keep pressing **SELECT** until the desired selection is displayed.
5. Press **STORE**.
6. To program another doorphone, press **NEXT** or **PREV**, or **SELECT** and enter the desired **doorphone number**.
7. Repeat steps 4 through 6.
8. Press **END**.

Conditions

None

Features Guide References

Doorphone Call

[821] Doorphone Ring/Chime Selection

Description

Assigns an incoming doorphone call ringing way for each doorphone. The ringing way depends on the selection as follows, when a visitor presses the doorphone button:

Ring: Rings an extension pre-assigned in program [607-608] Doorphone Ringing Assignment — Day / Night.

Chime: Chimes instead of ringing. (The extension pre-assigned in program [607-608] does not ring but can receive a doorphone call.)

Ring & Chime: Rings a pre-assigned extension in program [607-608] and chimes simultaneously.

Selection

- Doorphone number: **1 through 4, *** (*=all doorphones)
- **Ring/Chime/Ring & Chime**

Default

All doorphones — Ring

Programming

1. Enter **821**.
Display: 821 RING/CHIME
2. Press **NEXT**.
Display: Door NO?→
3. Enter a **doorphone number**.
Pressing **NEXT** can also enter doorphone number 1.
Display example: DP1 :Ring
4. Keep pressing **SELECT** until the desired selection is displayed.
5. Press **STORE**.
6. To program another doorphone, press **NEXT** or **PREV**, or **SELECT** and enter the desired **doorphone number**.
7. Repeat steps 4 through 6.
8. Press **END**.

Conditions

None

Features Guide References

Doorbell/Door Chime (user-supplied)

Doorphone Call

[822] Doorphone Chime Assignment

Description

Assigns each doorphone to the relay to which a doorbell/door chime should be connected, when assigned "Chime" or "Ring & Chime" in program [821] Doorphone Ring/Chime Selection. One doorbell/door chime is available for any doorphone. The relay other than the relays connected to door openers should be selected.

Selection

- Doorphone number: **1 through 4, *** (*=all doorphones)
- **Relay1 / Relay2 / Relay3 / Relay4**

Default

All doorphones — Relay4

Programming

1. Enter **822**.
Display: 822 CHIME ASSIGN
2. Press **NEXT**.
Display: Door NO?→
3. Enter a **doorphone number**.
Pressing **NEXT** can also enter doorphone number 1.
Display example: DP1 :Relay4
4. Keep pressing **SELECT** until the desired selection is displayed.
5. Press **STORE**.
6. To program another doorphone, press **NEXT** or **PREV**, or **SELECT** and enter the desired **doorphone number**.
7. Repeat steps 4 through 6.
8. Press **END**.

Conditions

None

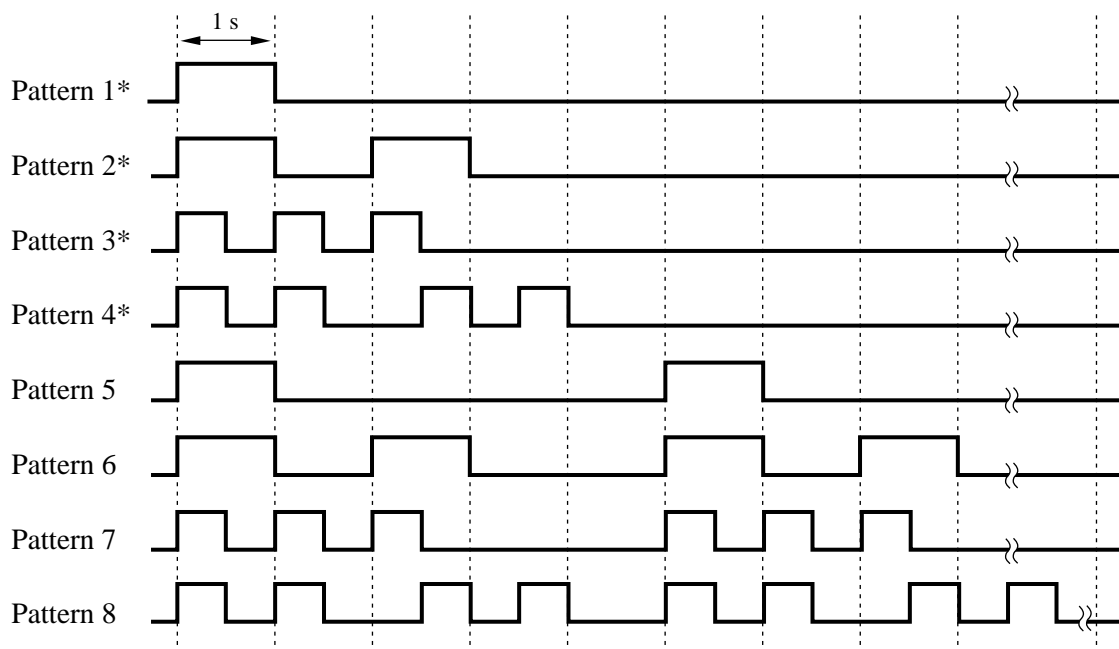
Features Guide References

Doorbell/Door Chime (user-supplied)
Doorphone Call

[823] Doorphone Chime Pattern Selection

Description

Assigns an incoming doorphone call chiming pattern for each doorphone. There are eight patterns as follows:



* The chime pattern occurs only once during the doorphone ringing time.

Selection

- Doorphone number: **1 through 4, *** (*=all doorphones)
- **Pattern1 / Pattern2 / Pattern3 / Pattern4 / Pattern5 / Pattern6 / Pattern7 / Pattern8**

Default

All doorphones — Pattern1

Programming

1. Enter **823**.
Display: 823 CHIME PATTRN
2. Press **NEXT**.
Display: Door NO?→
3. Enter a **doorphone number**.
Pressing **NEXT** can also enter doorphone number 1.
Display example: DP1 :Pattern1

4. Keep pressing **SELECT** until the desired selection is displayed.
5. Press **STORE**.
6. To program another doorphone, press **NEXT** or **PREV**, or **SELECT** and enter the desired **doorphone number**.
7. Repeat steps 4 through 6.
8. Press **END**.

Conditions

None

Features Guide References

Doorbell/Door Chime (user-supplied)

Doorphone Call

2.9 Optional Programming

[990] System Additional Information

Description

Allows the following programming items to be changed, if required. Each bit in each Area represents a programming item.

Chart for the Areas and Bits

		Bit Number															
		16	15	14	13	12	11	10	9	8	7	6	5	4	3	2	1
Display Example	Area 01	0	0	1	0	1	0	0	0	1	1	0	0	0	0	0	1
	Area 02	1	1	1	0	0	1	1	0	0	0	1	0	1	1	0	0
	Area 03	0	0	0	0	0	0	0	0	0	0	0	0	0	0	0	0
	Area 04	1	1	1	1	1	1	1	1	0	0	0	0	0	0	0	0
	Area 05	1	1	1	1	1	1	1	1	1	1	1	1	1	1	1	1
	Area 06	1	1	1	1	1	1	1	1	1	1	1	1	1	1	1	1
	Area 07	1	1	1	1	1	1	1	1	1	1	1	1	1	1	1	1
	Area 08	1	1	1	1	1	1	1	1	1	1	1	1	1	1	1	1
	Area 09	1	1	1	1	1	1	1	0	1	1	1	1	1	1	1	1
	Area 10	1	1	1	1	1	1	1	1	1	1	1	1	1	1	1	1

Explanation

Area	Bit	Description	Selection	Default	References
01	1	Sound source during transfer.	0 : ringback tone 1 : Music on Hold	1	<ul style="list-style-type: none"> CALL TRANSFER FEATURES Music on Hold
	2	Result of pressing the hookswitch lightly and then replacing the handset (during a CO line call (single line telephones only)).	0 : Consultation Hold 1 : disconnection	0	Consultation Hold
	3	Result of pressing the FLASH button on proprietary telephones (during an outside call).	0 : disconnection signal 1 : External Feature Access	0	<ul style="list-style-type: none"> External Feature Access Flash
	4-7	Unused			
	8	Enables or disables the dial tone between obtaining a CO line and dialing the phone number when using the one-touch dial, redial or speed dial function.	0 : disable 1 : enable	1	None
	9	Result of pressing the hookswitch lightly (single line telephones only).	0 : Consultation Hold 1 : disconnection	0	Consultation Hold
	10	Sets the duration of the DTMF signals sent to the Voice Processing System (VPS) ports.	0 : 80 ms 1 : 160 ms	0	Voice Mail Integration
	12,11	Sets the time the system waits before sending DTMF signals (such as a mailbox number) to the VPS after the VPS answers a call.	00 : 0.5 s 01 : 1.0 s 10 : 1.5 s 11 : 2.0 s	10	Voice Mail Integration
	14,13	Sets the time the system waits before sending DTMF signals (programmed in [113]) to the VPS after the VPS calls an extension.	00 : 0.5 s 01 : 1.0 s 10 : 1.5 s 11 : 2.0 s	10	Voice Mail Integration
	15	Assigns whether the system or the VPS turns off the message Waiting lamp when the user hears a message recorded in a mailbox.	0 : system 1 : VPS	0	<ul style="list-style-type: none"> Message Waiting Voice Mail Integration
	16	Unused			

Explanation

Area	Bit	Description	Selection	Default	References
02	1	If an outside party is transferred and unanswered, assigns whether Transfer Recall occurs at the originating transfer extension or at the Operator 1.	0 : initiating extension 1 : Operator 1	0	Call Transfer, Unscreened - to Extension
	2	If Limited CALL Duration is enabled in program [502] Extension-to-Outside Line Call Duration Limit, assigns if Limited Call Duration is done for both outgoing and incoming calls or for outgoing calls only.	0 : both calls 1 : outgoing calls only	0	Limited Call Duration
	3	Allows you to remove confirmation tone 4. By default, a beep tone sounds when a three-party conference is started / ended.	0 : disable 1 : enable	1	Confirmation Tone
	4	Determines if the dialed "*" and "#" will be checked by Toll Restriction. This assignment is required for certain central offices (CO) to prevent toll fraud. Some COs ignore the user-dialed "*" and "#". If your CO is such a type, select "0" (no check).	0 : no check 1 : check	1	Toll Restriction
	5	Unused			
	6	Allows you to remove Confirmation Tone 3. This tone is sent when a conversation is established just after dialing the feature number for accessing the following : Call Pickup, Paging, Paging Answer, Trunk (Outside Line) Answer From Any Station (TAFAS), Hold Retrieve and Call Park Retrieve.	0 : disable 1 : enable	1	Confirmation Tone

Explanation

Area	Bit	Description	Selection	Default	References
02	7	An outside line set to pulse or call blocking mode in program [402] Dial Mode Selection can have two settings. This assigns the pulse break ratio during dial pulsing. Select an appropriate ratio depending on the single line in your country.	0 : 60 % 1 : 67 %	0	Dial Type Selection
	8	Assigns if an extension's mailbox number is substituted by the extension number or it is programmable (free). If a call is forwarded or rerouted to the Voice Processing System (VPS), this system automatically transmits the mailbox number to the VPS to specify the user's mailbox. To make it programmable, select "1 (free)," then assign the number in program [609] Voice Mail Access Codes.	0 : extension number 1 : free	0	Voice Mail Integration
	9	Unused			
	10	Determines the source of Music Source 1 for Music on Hold and BGM.	0 : internal music source 1 : external music source	1	<ul style="list-style-type: none"> • Background Music (BGM) • Background Music (BGM) – External • Music on Hold
	11-12	Selects inter-digit pause for pulse dialing.	00 : 630 ms 01 : 830 ms 10 : 1030 ms	01	None
	13	Selects the intercom dial tone frequency.	0 : normal 1 : distinctive	0	None
	14	Selects the extension-hooking signal detection time.	0 : 84-1000 ms 1 : 200-1000 ms	1	None
	16, 15	Unused			
03	1-12	This bit is provided to assign PAD Switch Control (volume control of received calls on an outside line). This can be assigned per outside line. The outside line numbers [1] through [12] correspond to outside lines 1 through 12.	0 : 0 dB 1 : -3 dB	0	None
	13-16	Unused			

Explanation

Area	Bit	Description	Selection	Default	References
04	1-8	Unused			
	9	Prevents or allows a call originated by an Automated Attendant (AA) port of Voice Processing System (VPS) to another AA port.	0 : prevent 1 : allow	1	Voice Mail Integration
	10	Prevents or allows sending pulse dialing signals during an outside call.	0 : prevent 1 : allow	1	None
	12, 11	Unused			
	13	Enables or disables a pulse feedback sound when a dialed number is sent to an outside line.	0 : disable 1 : enable	1	None
	14-16	Unused			

Explanation

Area	Bit	Description	Selection	Default	References
05	1	Enables or disables the automatic time adjustment by Caller ID information once a day by the first call received after 3:00AM.	0 : enable 1 : disable	1	Caller ID
	2	An outside-to-outside DISA call can be prolonged many times. This bit specifies how many times is possible.	0 : 10 times 1 : no limitation	1	Direct Inward System Access (DISA)
	3	Enables or disables retry by dialing "×" during DISA outside call.	0 : disable 1 : enable	1	DISA
	4	Unused			
	5	Sets the time the system waits for IRNA after the OGM.	0 : immediately 1 : after 5 seconds	1	Outgoing Message (OGM)
	6	Selects the result when an outside call is routed by Call Forwarding to a voice mail port which is in Automated Attendant (AA) service mode. [For both Inband and DPT Integration] disable: AA service mode enable: The mode will change to the Voice Mail (VM) service mode and a Follow-On ID [Only when Inband Integration] is sent. When the voice mail port is in VM service mode, this program is not affected.	0 : disable 1 : enable	1	Voice Mail Integration
	7	Selects the result when an outside call is routed to a voice mail port by IRNA. [For both Inband and DPT Integration] When the voice mail port is in VM service mode: enable: VM service mode disable: The mode will change to the AA service mode. [Only when Inband Integration] When the voice mail port is in AA service mode: enable: The mode will change to the VM service mode and a Follow-On ID [Only when Inband Integration] is sent. disable: AA service mode	0 : enable 1 : disable	1	Voice Mail Integration

Explanation

Area	Bit	Description	Selection	Default	References
05	8	Selects how long the system keeps the door opener unlocked.	0 : 3 s 1 : 5 s	1	Door Opener
	9	Enables or disables dial tone 2 when an extension sets programmable extension features such as Call Waiting.	0 : disable 1 : enable	1	None
	10	Determines the result when pressing the FLASH button during an outside call (When Area 01-bit 3=0). Flash: Disconnects and accesses the same outside line. Terminate: Terminates the outside line and accesses the intercom.	0 : Terminate 1 : Flash	1	Flash
	11	Selects the message waiting ring type: 3 quick rings or 2 normal rings, for single line telephones.	0 : 3 times by 40 ms 1 : 2 times by 280 ms	1	Message Waiting
	12	Selects the SMDR format for an incoming call with Caller ID. The caller's number only or caller's number only or caller's number and name is selected.	0 : <Incoming> + caller no. 1 : <I> + caller no. + name	1	Station Message Detail Recording (SMDR)
	13	Enables or disables the SMDR printout for RC (when an incoming call occurs) and AN (when an incoming call is answered).	0 : enable 1 : disable	1	None
	14	Selects the result when a call from DISA (Direct Inward System Access) is invalid.	0 : IRNA 1 : reorder tone is sent	1	None
	15	Selects the result of pressing "0" (default); calls operators 1 and 2 at the same time or Operator 1 first and then Operator 2 if Operator 1 is busy.	0 : Operators 1 and 2 simultaneously 1 : Operator 1 first and then Operator 2	1	Operator Call
	16	Enables or disables the SMDR printout when the Timed Reminder starts and the alarm is not answered.	0 : enable 1 : disable	1	Timed Reminder

Explanation

Area	Bit	Description	Selection	Default	References
06	1	Determines whether the account code is printed out or not (shown in dot) in the SMDR.	0 : not printed out 1 : printed out	1	Account Code Entry
	2-4	Unused			
	5	Determines whether to printout the last entered or the first entered account code in the SMDR.	0 : first entered code 1 : last entered code	1	Account Code Entry
	6	When an incoming call is received in a Hunting group (Ring, Circular, Terminate), this program determines whether the extension where the Do Not Disturb feature is set receives the call or not.	0 : receive 1 : not receive	1	None
	7	When an incoming call is received in a Hunting group (Ring, Circular, Terminate), this program determines whether the extension where the Call Forwarding feature is set receives the call or not.	0 : receive 1 : not receive	1	None
	8	Enables or disables Circular and Terminate Hunting.	0 : disable 1 : enable	1	Station Hunting
	9-16	Unused			
07	1-6	Unused			
	7	Allows a beep in Music on Hold.	0 : beep 1 : usual music source	1	Music on Hold
	9, 8	Determines how the call is treated when a call from DISA arrives at a Do Not Disturb (DND) extension or busy extension which has disabled Call Waiting.	01 : IRNA (Intercept Routing - No Answer) 10 / 11 : receive at the CO button (only flashes) 00 : busy tone is sent	11	Direct Inward System Access (DISA)
	10-16	Unused			
08	1-16	Unused			

Explanation

Area	Bit	Description	Selection	Default	References
09	2, 1	Unused			
	4, 3	Assigns the display of FWD/DND on LED. Resets the system to function this assignment.	11 : Red Flashing / Red On 10 : Red On / Red On 01 : Red On / Red Flashing 00 : Red Flashing / Red Flashing	11	<ul style="list-style-type: none"> • Call Forwarding • Do Not Disturb (DND)
	5-8	Unused			
	9	Allows the calling party's number and name to remain on the display of the call.	0 : remains the current display 1 : Call duration	0	Caller ID
	11, 10	Unused			
	12	Permits or disallows the last extension in a group to log-out.	0 : permit 1 : disallow	1	Log-in / Log-out
	13-16	Unused			
10	1-16	Unused			

Selection

- Area code: **01 through 10**
- Selection: See "**Selection**" shown in the lists for each area.

Default

See "Default" shown in the lists.

Programming

1. Enter **990**.
Display: 990 SYS ADD DATA
2. Press **NEXT**.
Display: Area No?
3. Enter an **area code**.
Display example: 0010100011111001
4. Keep pressing **▶** or **◀** to move the cursor to the desired bit.
5. Enter your **selection**.
To change the current entry, press **STORE** and the new selection.

6. To program another bit, repeat steps 4 and 5.
7. Press **STORE**.
8. To program another area, press **SELECT** and the desired **area code**.
9. Repeat steps 4 through 8.
10. Press **END**.

Conditions

None

Features Guide References

None

[991] COS Additional Information

Description

Adds the following programming items on a Class of Service (COS) basis, if required.

Bits 1-8: COS Additional Information

Bits 9-16: System Additional Information

COS 1-8 There are 8 bits available in Bit 1-8 as follows:

	Bit Number															
	16	15	14	13	12	11	10	9	8	7	6	5	4	3	2	1
Display Example									1	1	1	1	0	0	0	0


↓
(System Additional Information)

Explanation for Bits 1 through 8

Bit	Description	Selection	Default	Feature Guide References
1-4	Sets the number of digits allowed to dial out during an analog outside call on a Class of Service (COS) basis. If an outside party hangs up and the extension user tries to dial out still on the outside line, the system will disconnect the line at the time the assigned number of digits are dialed. This program can be added if the Calling Party Control (CPC) Signal Detection is not provided by the outside line.	0000 : no limit 0001 : 1 digit 0010 : 2 digits 0011 : 3 digits 0100 : 4 digits 0101 : 5 digits 0110 : 6 digits 0111 : 7 digits 1000 : 8 digits 1001 : 9 digits 1010 : 10 digits 1011 : 11 digits 1100 : 12 digits 1101 : 13 digits 1110 : 14 digits 1111 : 15 digits	0000	Class of Service (COS)
5	Enables or disables the Call Forwarding — Follow Me feature on a COS basis.	0 : disable 1 : enable	1	Call Forwarding
6-8	Unused			

System Additional Information 2

COS 5 There are 8 bits available in System Additional Information Area as follows:

	Bit Number															
	16	15	14	13	12	11	10	9	8	7	6	5	4	3	2	1
Display Example	1	1	1	1	1	1	1	1								

(COS Additional Information)

Explanation for COS 5

Bit	Description	Selection	Default	Feature Guide References
9	Selects how to display the call log in the personal area. Separate mode: Caller's information is displayed separately as many times as identical calls were received. Counter mode: Caller's information is displayed in one information with a counter that indicates the number of times identical calls were received.	0 : Separate 1 : Counter	1	Call Log, Incoming
11,10	[Microsoft® Windows® 2000 / Windows XP users only] When using the PC programming software with Microsoft Windows 2000/Windows XP, the data transmission may take longer or may not work well. Changes the default values to the proper numeric values (00 : recommendable). (In this case, if the system is not responsive by changing to "00", please try other values—firstly to "01", secondly to "10".)	00 : 64 ms x 2 01 : 64 ms x 3 10 : 64 ms x 4 11 : 64 ms x 1	11	None

Explanation for COS 5

Bit	Description	Selection	Default	Feature Guide References
12	Determines the destination when an incoming call arrives at Voice Mail, if all VM ports are busy. Wait: The call waits until a VM port becomes free. IRNA destination: The call is forwarded to the IRNA destination immediately.	0 : Wait 1 : IRNA destination	1	Voice Mail Integration
13-16	Unused			

*1 Microsoft and Windows are either registered trademarks or trademarks of Microsoft Corporation in the United States.

Selection

- COS number: **1 through 8, *** (*=all COS)
- Selection : See "Selection" shown in the lists.

Default

See "Default" shown in the lists.

Programming

1. Enter **991**.
Display: 991 COS ADD DATA
2. Press **NEXT**.
Display: COS NO?→
3. Enter a **COS number**.
Display example: 111111111110000
4. Keep pressing ← or → to move the cursor to the desired bit.
5. Enter your **selection (0 or 1)**.
To change the current entry, press **STORE** and the new selection.
6. To program another bit, repeat steps 4 and 5.
7. Press **STORE**.
8. To program another COS, press **SELECT** and the desired **COS number**.
9. Repeat steps 4 through 8.
10. Press **END**.

Conditions

None

Features Guide References

None

Section 3

Default Values

2 General Programming

Program	Default
[000] Date and Time Set	'01 Jan. 1 MON 12:00 AM 12
[001] System Speed Dialing Number Set	All speed dial numbers - Not stored
[003] Extension Number Set	Jack 01 through 32 = 101 through 132
[004] Extension Name Set	All jacks — Not stored
[005] Flexible CO Button Assignment	All jacks — CO buttons 1 through 12 = Single-CO 01 through 12
[006] Operator / Manager Extension Assignment	Operator 1 — Jack 01; Operator 2 and Manager — Not stored
[007] DSS Console Port and Paired Telephone Assignment	All DSS Consoles — Not stored
[008] Absent Messages	1: Will Return Soon 2: Gone Home 3: At Ext % % % 4: Back at % % : % % 5: Out Until % % / % % 6: In a Meeting 7 through 9: Blank (not stored)
[009] Quick Dial Number Set	All location numbers — Not stored
[014] VM Name Set	VM01: V.Mail 01, VM02: V.Mail 02, VM03: V.Mail 03, VM04: V.Mail 04, VM05: V.Mail 05, VM06: V.Mail 06, VM07: V.Mail 07, VM08: V.Mail 08
[017] DISA User Codes	Code 01=Blank — COS 8 Code 02=Blank — COS 8 : Code 32=Blank — COS 8
[100] Flexible Numbering	See "Feature Number List" on the previous pages.
[101] Day / Night Service Switching Mode	Manual
[102] Day / Night Service Starting Time	Every day of the week — Day — 9:00 AM / Night — 5:00 PM
[103] Automatic Access Outside Line Assignment	12345678

Program	Default
[105] Account Codes	All locations — Not stored
[106] Station Hunting Type	All extension groups — Disable
[107] System Password	1234
[108] Automatic Hold by CO / DSS Button	DSS button — Enable, CO button — Disable
[109] Expansion Unit Type	C;E1;E2
[110] Caller ID Code Set	All locations — Not stored
[111] Caller ID Name Set	All locations — Not stored
[113] VM Status DTMF Set	RBT — 1; BT — 2; ROT — 3; DND — 4; Answer — 5; Disconnect — #9; Confirm — 9; FWD VM RBT — 6; FWD VM BT — 7; FWD EXT RBT — 8
[114] VM Command DTMF Set	LV-MSG — H; GETMSG — *H; AA-SVC — #8 ; VM-SVC — #6
[116] ROM Version Display	Not applicable.
[117] Voice Mail Number Assignment	All jacks — Blank
[118] Voice Mail Extension Number Assignment	VM-01=165, VM-02=166, VM-03=167, VM-04=168, VM-05=169, VM-06=170, VM-07=171, VM-08=172
[119] Voice Mail Extension Group Assignment	All voice mail numbers — EXG 1
[120] User Password	1234
[121] Walking COS Password	1234
[124] Phantom Extension Number Assignment	All locations — Not stored
[125] Area Code Assignment	All locations — Blank
[126] Caller ID Modification for Local Call	All locations — Deleted number of digits = 3, Added number = blank
[127] Caller ID Modification for Long Distance Call	Deleted number of digits — 0; Added number — 1
[150] Lunch Service Starting / Ending Time	Every day of the week – 12:00 – 12:59 PM

Program	Default
[151] Break Service Starting / Ending Time	Every day of the week – 3:00 – 3:29 PM
[200] Hold Recall Time	60 sec
[201] Transfer Recall Time	12 rings
[202] Call Forwarding — No Answer Time	3 rings
[203] Intercept Time	12 rings
[204] Pickup Dial Waiting Time	1 sec
[205] Extension-to-Outside Line Call Duration Time	10 min
[206] Outside-to-Outside Line Call Duration Time	10 min
[207] First Digit Time	10 sec
[208] Inter Digit Time	10 sec
[211] Dial Start Time	500 msec
[212] Call Duration Count Start Time	0 sec
[213] DISA Delayed Answer Time	1 ring
[214] DISA Prolong Time	3 min
[215] Outgoing Message Time	32, 0, 32, 0 (for OGM 1 through 4 from left to right)
[216] Message Waiting Ring Interval Time	0 min (no ring)
[217] Timed Reminder Alarm Ring Time	30 sec
[218] DISA AA Wait Time	1 sec
[219] Call Park Recall Time	12 rings
[221] Caller ID Call Waiting Time	30 sec
[300] TRS Override for System Speed Dialing	Disable
[301-305] TRS Denied Code Entry for Levels 2 through 6	All locations — Not stored

Program	Default
[306-310] TRS Excepted Code Entry for Levels 2 through 6	All locations — Not stored
[311] Special Carrier Access Codes	All locations — Not stored
[332] Extra Entry Table Selection	Except - 2
[333] TRS Entry Code Assignment for Extra Table	All locations — Not stored
[334] Emergency Dial Number Set	Location 01 = 911, Other location = Not stored
[400] Outside Line Connection Assignment	All outside lines — Connect
[401] Outside Line Group Assignment	CO01 — TRG 1; CO02 — TRG 2; CO03 — TRG 3; CO04 — TRG 4; CO05 — TRG 5; CO06 — TRG 6; CO07 — TRG 7; CO08 through CO12 — TRG 8
[402] Dial Mode Selection	All outside lines — DTMF
[403] Pulse Speed Selection	All outside lines — 10 pps
[404] DTMF Time	All outside lines — 80 msec
[405] CPC Signal Detection Incoming Set	All outside lines — 400 msec
[406] Caller ID Assignment	All outside lines — Disable
[407-408] DIL 1:1 Extension — Day / Night	All outside lines — Disable — Day / Night
[409-410] Intercept Extension — Day / Night	All outside line groups — Disable — Day / Night
[411] Host PBX Access Codes	All outside line groups — Not stored
[412] Pause Time	All outside line groups — 1.5 sec
[413] Flash Time	All outside line groups — 600 msec
[414] Disconnect Time	All outside line groups — 1.5 sec
[415] CPC Signal Detection Outgoing Set	Disable

Program	Default
[417] Outside Line Name Assignment	All outside lines — Not stored
[440] Line Hunting Sequence	All outside line groups – from Large to Small
[457-458] DIL 1:1 — Lunch / Break Group	All outside lines — Blank
[462] Caller ID Call Waiting Assignment	All outside lines — Enable
[463-464] DIL 1:1 Extension — Lunch / Break	All outside lines — Disable — Lunch / Break
[500]-[501] Toll Restriction Level — Day / Night	COS 1 through 7 — Level 1 — Day / Night; COS 8 — Level 7 — Day / Night
[502] Extension-to-Outside Line Call Duration Limit	All COS — Disable
[503] Call Transfer to Outside Line	All COS — Disable
[504] Call Forwarding to Outside Line	All COS — Disable
[505] Executive Busy Override	All COS — Disable
[506] Executive Busy Override Deny	All COS — Enable
[507] Do Not Disturb Override	All COS — Disable
[508] Account Code Entry Mode	All COS — Option
[510] Night Service Access	All COS — Disable
[511] PT Programming Level	All COS — LVL1
[601] Class of Service	All jacks — COS 1
[602] Extension Group Assignment	All jacks — Extension group 1
[603-604] DIL 1:N Extension and Delayed Ringing — Day / Night	All jacks — all outside lines — Immediate ringing — Day / Night
[605-606] Outgoing Permitted Outside Line Assignment — Day / Night	All jacks — all outside lines — Enable — Day / Night
[607-608] Doorphone Ringing Assignment — Day / Night	Jack 01 — All doorphones; Other jacks — no doorphone — Day / Night
[609] Voice Mail Access Codes	All jacks — Not stored

Program	Default
[610] Live Call Screening Recording Mode Assignment	All jacks — Stop Rec (Stop recording)
[619] Extension Call Forwarding — No Answer Time	All jacks — 0
[620] Lunch / Break Group Assignment	All groups — Blank
[621] Cordless PT Extension Port	All jacks — all outside lines — No
[624] Common Area Call Log Check Assignment	All jacks — Enable
[625] Room Monitor Assignment	All jacks — Disable
[800] SMDR Incoming / Outgoing Call Log Printout	Outgoing calls — All; Incoming calls — On
[801] SMDR Format	Page length — 66; Skip perforation — 0
[802] System Data Printout	Not applicable.
[803] Music Source Use	Hold and BGM — Music 1
[804] External Pager BGM	All external pagers — Disable
[805] External Pager Confirmation Tone	On
[806] Serial Interface (RS-232C) Parameters	New line code = CR+LF; Baud rate = 9600; Word length = 8; Parity bit = Mark; Stop bit = 1
[809] DISA Security Type	Trunk (Outside Line) Security
[810] DISA Tone Detection	Enable
[812] DISA DTMF Repeat	Dial and Call — Repeat
[813] Floating Number Assignment	Pager 1=196; Pager 2=197; DISA 1=198; DISA 2=298; E-Group 1=191; E-Group 2=192; E-Group 3=193; E-Group 4=194; E-Group 5=291; E-Group 6=292; E-Group 7=293; E-Group 8=294;
[815] DISA Built-in Auto Attendant	Disable
[818] Doorphone Ringing / Tone Pattern Selection	All doorphones — Triple

Program	Default
[819] Doorphone Access Tone Selection	All doorphones — Enable
[820] Doorphone Ringing Time	All doorphones — 30sec
[821] Doorphone Ring/Chime Selection	All doorphones — Ring
[822] Doorphone Chime Assignment	All doorphones — Relay4
[823] Doorphone Chime Pattern Selection	All doorphones — Pattern1
[990] System Additional Information	See "Default" shown in the lists.
[991] COS Additional Information	See "Default" shown in the lists.

Section 4

Index

A

Absent Messages 33
Account button 27
Account Code Entry Mode 149
Account Codes 47
Area Code Assignment 72
Automated Attendant (AA) 49
Automated Attendant (AA) Service 49, 60
Automatic Access Outside Line Assignment 46
Automatic Hold by CO / DSS Button 52

B

Background Music (BGM) 177, 178
Break Service Starting / Ending Time 79

C

Call Duration Count Start Time 91
Call Forwarding - No Answer Time 83
Call Forwarding to Outside Line 145
Call Park Recall Time 99
Call Transfer to Outside Line 144
Caller ID Assignment 119
Caller ID Call Waiting Assignment 137
Caller ID Call Waiting Time 100
Caller ID Code Set 54
Caller ID Indication - Common button 27
Caller ID Indication - Personal button 27
Caller ID Modification for Local Call 74
Caller ID Modification for Long Distance Call 76
Caller ID Name Set 56
Caller ID Selection - Common button 27
Caller ID Selection - Personal button 27
Caller ID Service 54, 56
Characters 14
Circular 49
Class of Service 154
CLEAR button 9
Common Area Call Log Check Assignment 170
Conference button 27
Confirmation tone 12
Cordless PT Extension Port 168
COS Additional Information 207
CPC Signal Detection Incoming Set 117
CPC Signal Detection Outgoing Set 130

D

Date and Time Set 20
Day / Night Service Starting Time 44
Day / Night Service Switching Mode 43
Dial Mode Selection 113
Dial Start Time 90
DIL 1:1 - Lunch / Break Group 135
DIL 1:1 Extension - Day / Night 120
DIL 1:1 Extension - Lunch / Break 138

DIL 1:N Extension and Delayed Ringing - Day / Night 158
Direct Inward System Access (DISA) 183, 184
DISA (Direct Inward System Access) 182, 185, 187
DISA AA Wait Time 98
DISA Built-in Auto Attendant 187
DISA Delayed Answer Time 92
DISA DTMF Repeat 184
DISA Prolong Time 93
DISA Security Type 182
DISA Tone Detection 183
DISA User Codes 37
Disconnect Time 129
Do Not Disturb Override 148
Doorphone Access Tone Selection 190
Doorphone Chime Assignment 194
Doorphone Chime Pattern Selection 195
Doorphone Ring/Chime Selection 192
Doorphone Ringing / Tone Pattern Selection 188
Doorphone Ringing Assignment - Day / Night 162
Doorphone Ringing Time 191
DSS button 27
DSS Console Port and Paired Telephone Assignment 31
DTMF (Dual Tone Multi-Frequency) 184
DTMF signals 58
DTMF Time 116

E

Emergency Dial Number Set 109
END button 9
Executive Busy Override 146
Executive Busy Override Deny 147
Expansion Unit Type 53
Extension Call Forwarding - No Answer Time 166
Extension Group Assignment 156
Extension Name Set 26
Extension Number Set 24
Extension-to-Outside Line Call Duration Limit 142
Extension-to-Outside Line Call Duration Time 86
External Pager BGM 178
External Pager Confirmation Tone 179
Extra Entry Table Selection 107

F

First Digit Time 88
FLASH button 9
Flash Time 127
Flexible CO Button Assignment 27
Flexible Numbering 39
Floating Number Assignment 185

Follow On ID 61
FWD/DND button 27

G

Group-CO button 27

H

Hold Recall Time 81
Host PBX Access Codes 124

I

Inter Digit Time 89
Intercept Extension - Day / Night 122
Intercept Routing - No Answer (IRNA) 84
Intercept Time 84

L

Line Hunting Sequence 134
Live Call Screening button 27
Live Call Screening Cancel button 27
Live Call Screening Recording Mode
Assignment 165
Log-In/Log-Out button 27
Loop-CO button 27, 46
Lunch / Break Group Assignment 167
Lunch Service Starting / Ending Time 77

M

Message Waiting button 27
Message Waiting Ring Interval Time 96
Music on Hold 177
Music Source Use 177

N

NEXT button 9
Night button 27
Night Service Access 151

O

One-Touch button 27
Operator / Manager Extension Assignment 29
Outgoing Message Time 94
Outgoing Permitted Outside Line Assignment - Day
/ Night 160
Outside Line Connection Assignment 110
Outside Line Group Assignment 111
Outside Line Name Assignment 132
Outside-to-Outside Line Call Duration Time 87
Overlay 9

P

PAUSE button 9
Pause Time 126

Phantom button 27
Phantom Extension Number Assignment 70
Pickup Dial Waiting Time 85
PREV (PREVIOUS) button 9
Programming Example 17
Programming Methods 12
PT Programming Level 152
Pulse Speed Selection 115

Q

Quick Dial Number Set 35

R

Ring Group 49
ROM Version Display 62
Room Monitor Assignment 171

S

Save button 27
SECRET button 9
SELECT button 9
Serial Interface (RS-232C) 172, 174, 176
Serial Interface (RS-232C) Parameters 180
Single-CO button 27
SMDR Format 174
SMDR Incoming / Outgoing Call Log Printout
172
Special Carrier Access Codes 106
Station Hunting Type 49
STORE button 9
System Additional Information 197
System Data Printout 175
System Password 51
System Speed Dialing Number Set 22

T

Terminating 49
Timed Reminder Alarm Ring Time 97
Toll Restriction Level - Day / Night 140
Transfer Recall Time 82
TRS Denied Code Entry for Levels 2 through 6
102
TRS Entry Code Assignment for Extra Table
108
TRS Excepted Code Entry for Levels 2 through 6
104
TRS Override for System Speed Dialing 101
Two-Way Record button 27
Two-Way Transfer button 27

U

User Password 67
User Programming 8, 16, 67

V

VM Command DTMF Set 60
VM Name Set 36
VM Status DTMF Set 58
Voice Mail (VM) 49
Voice Mail (VM) Service 49, 60
Voice Mail Access Codes 163
Voice Mail Extension Group Assignment 66
Voice Mail Extension Number Assignment 64
Voice Mail Number Assignment 63
Voice Mail Transfer button 27
Voice Processing System (VPS) 58

W

Walking COS Password 69

DUBUgcb]WHY`Yd\cbY`GngHYa g



See More
Panasonic Manuals



www.voicesonic.com

Phone: 877-289-2829

Copyright:

This manual is copyrighted by Panasonic Communications Co., Ltd. (PCC). Under the applicable copyright laws, this manual may not be reproduced in any form, in whole or part, without the prior written consent of PCC and its licensee.

© 2001 Panasonic Communications Co., Ltd. All Rights Reserved.

Printed in the United Kingdom

PSQX2426XA KA0701YW3013