

*Awe*  
VAPORS

**DUAL**

**USER MANUAL**

READ USER MANUAL  
PRIOR TO OPERATION

**[WWW.AWEVAPORS.COM](http://WWW.AWEVAPORS.COM)**

*Awe*  
VAPORS



**DUAL CARTRIDGES**  
CREATE YOUR OWN  
FLAVOURS OR SWAP  
BETWEEN THE TWO.



2004/108/EC

**CE Accreditation**

Accredit that this product observe the European standards of health, safety and protecting the consumer or related principles.

**RoHS  
Compliant**

**RoHS Accreditation**

Accredit that using this product will not produce harmful substance and it is pro-environment



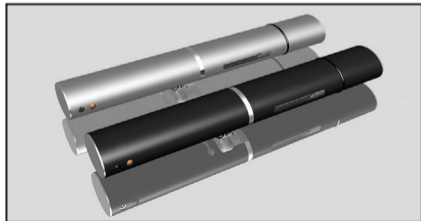
**SGS Accreditation**

Inspection, Examination Experiment and Accreditation Service with transparency simplification Network and related specialists in the department approved this product.

## PRODUCT COMPOSITION



**Warning:** Only charge device with the charger supplied to avoid damaging battery. Charge for 4 hours before use to extend the life of the battery.



## TROUBLE SHOOTING

### Why cant I taste the flavour of the Awe liquid?

The atomiser needs the wick to be soaked in liquid to be able to create vapor.

1. Hold the Dual with the mouthpiece pointing the opposite direction to your mouth, to allow the liquid to flow down to the atomiser.
2. Remove the mouthpiece and place a small drop of liquid onto the atomiser coil - be careful not to overfill.

### Why wont the Dual turn on?

The atomiser needs the wick to be soaked in liquid to be able to create vapor.

1. Check that the battery is fully charged. If the LED is flashing green, red and blue - Further charging is needed.
2. Check there if there liquid residue on the battery where it connects to the cartridge
3. Check there if there liquid residue on the battery where it connects to the cartridge
4. If the Dual is still not working then the cartridge requires replacing.

## INSTRUCTIONS



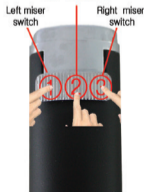
< To fill canisters, remove parts in the direction shown.

To turn on press the middle of the multifunctional bar (button 2 as shown below) quickly 5 times.

### How to use the Dual (below)

1. To activate flavour 1, press and hold the left side of the multifunctional bar.
2. To activate both flavours, press and hold the middle of the multifunctional bar.
3. To activate flavour 2, press and hold the right side of the multifunctional bar.

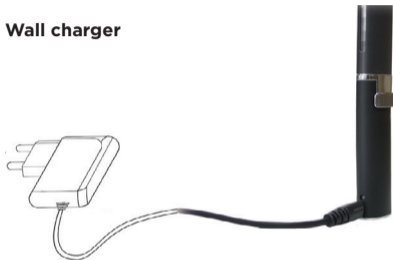
MIX: commix !!



The Dual multifunctional bar includes three buttons in one, providing the ability to vape one flavour or both. Just press the bar on the left or right side to vape the chosen liquid. Now the middle button activates both cartridges, to combine the two flavours for – Dual vaping!! You can create your own blends.

## INSTRUCTIONS – CHARGING

### Wall charger



### USB Charging cable



You can charge on the computer using a USB and it's also possible to use the stadia in the car to charge.

## INSTRUCTIONS - HOW TO INSERT LIQUID INTO THE CARTRIDGES



Shown here is the Dual cartridge looking down from the top.

The coil shown in the middle of the diagram is what heats up when the Dual is activated, turning the liquid to vapour.



1. Fill the refill bottle with the organic liquid selected (one or two of full droppers should be enough), and replace the cap.
2. Do not fill the cartridge while connected to the battery, remove by unscrewing the cartridge anti clockwise.
3. With the metal tip of the refill bottle, gently pierce through the rubber cap at side where the holes are, as indicated in the picture above. It's best that this is done on an angle to prevent any liquid leaking out (avoiding the middle or damaging the coil). Once you can see the metal tip is through the rubber cap gently squeeze the liquid into the cartridge, stop filling when it's 80% full. It's tempting to fill it all the way, don't it can cause splashback and leakage.
4. To avoid the first taste to be the coil heating up put a small drop of your liquid on the coil leave for 5 minutes before use.

## MAINTAINING THE DUAL



It is important to read this manual carefully. The Dual is a unique product. Do not implement another maintenance methods, than the one outlined in this manual.



1. To clean the cartridges within the Dual. Start by removing the mouthpiece, then twisting off the cartridge separating it from the battery. Remove the rubber cap and clean under water. With a small spray bottle filled with water, spray directly into the cartridge until filled - empty into a paper towel. Repeat until clean and leave on the paper towel to dry. Leave overnight to dry then replace cap and refill.
2. When refilling, be sure to remove any excess liquid from the base of the cartridge by dabbing onto a paper towel.
3. Liquid may also collect above the cap - remove the excess with a cotton tip.

*Awe*  
VAPORS

**WWW.AWEVAPORS.COM**