

Withings

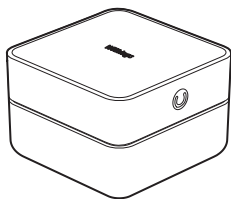
Smart Baby Monitor

User Manual

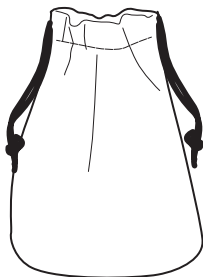


Made for
 iPod  iPhone  iPad

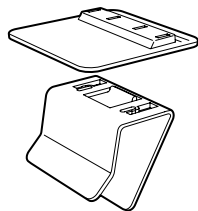
Inside the box



Smart Baby Monitor



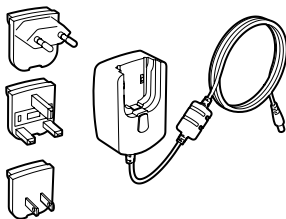
Carry bag



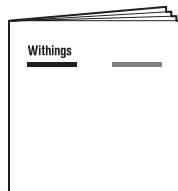
Bedside stand



Li-ion battery



Power supply
+ 3 local adaptors

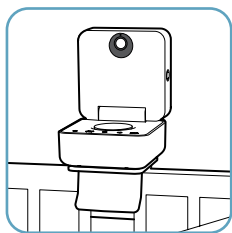


User manual

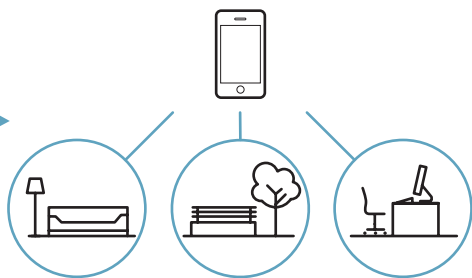
Thank you for choosing the Smart Baby Monitor

The Smart Baby Monitor is a revolutionary baby monitor with the allure of an elegant white music box.

Watch over your child. Interact with him/her. Ensure your baby's comfort from your iPhone, iPad or iPod touch, from anywhere and any time.

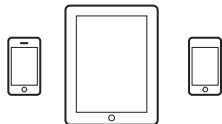


From home or a friend's house



At home or away

Before you start, you need:



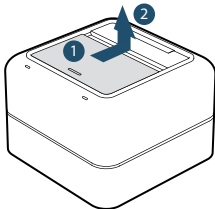
iPhone, iPad or iPod touch



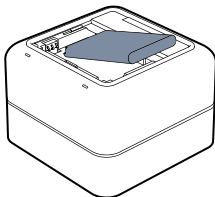
Internet access, via Wifi
or an Ethernet cable

① Installing the battery

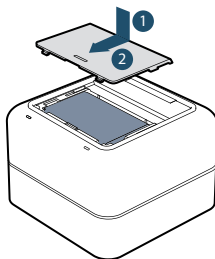
1. Slide open the battery compartment door.



2. Insert the battery.

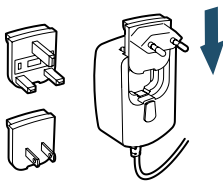


3. Close the door.

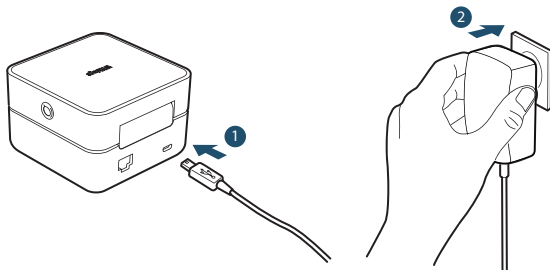


② Plugging in the monitor

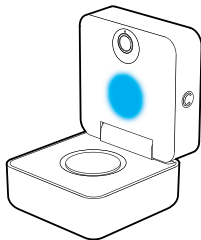
1. Insert the local adaptor on the power supply unit.



2. Plug your Smart Baby Monitor into a power socket.

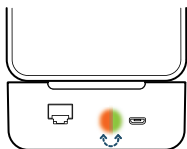


3. The night light turns blue, indicating the monitor is starting up.



③ Connecting the monitor to your iPhone, iPad or iPod touch

Before you begin, check that the light on the back of the monitor is blinking (start-up complete, waiting to be connected).



1. On your iPhone, iPad or iPod touch, go to «Settings», represented by the following icon:



2. Select «General» and then «Bluetooth».

3. Activate Bluetooth by sliding the switch button like this:

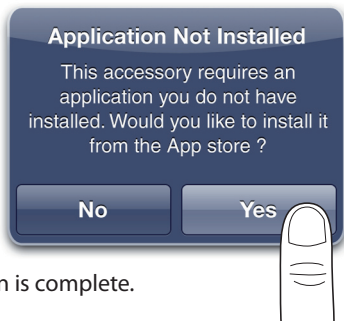


4. Select the Smart Baby Monitor from the list; its name starts with «SBM-...»



④ Installing the WithBaby application

1. Accept the automatic installation request by clicking on «Yes».



2. Wait until installation is complete.

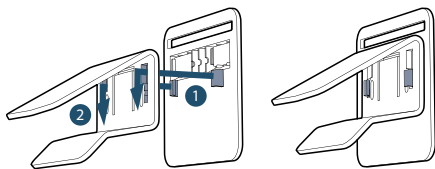


3. Launch the WithBaby app and follow the instructions.

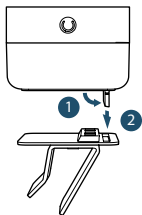


Installing the bedside stand (optional)

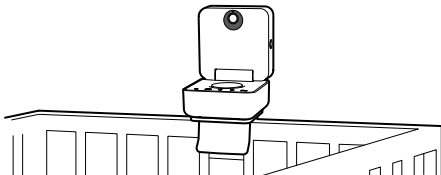
1. Attach the two parts together.



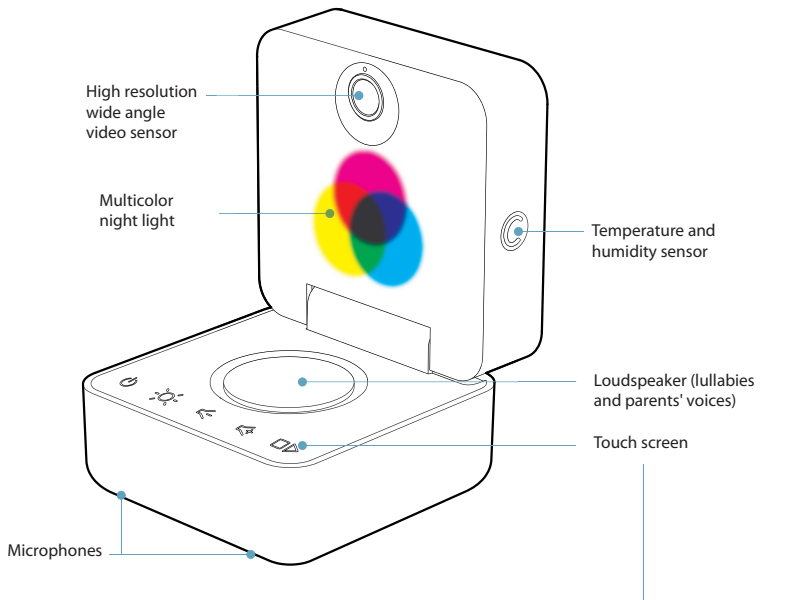
2. Attach your Smart Baby Monitor to the stand.



3. Place the stand on the side of the baby's bed.



Your Smart Baby Monitor



Start / Stop
Smart Baby Monitor



Start night light



Reduce
lullaby volume

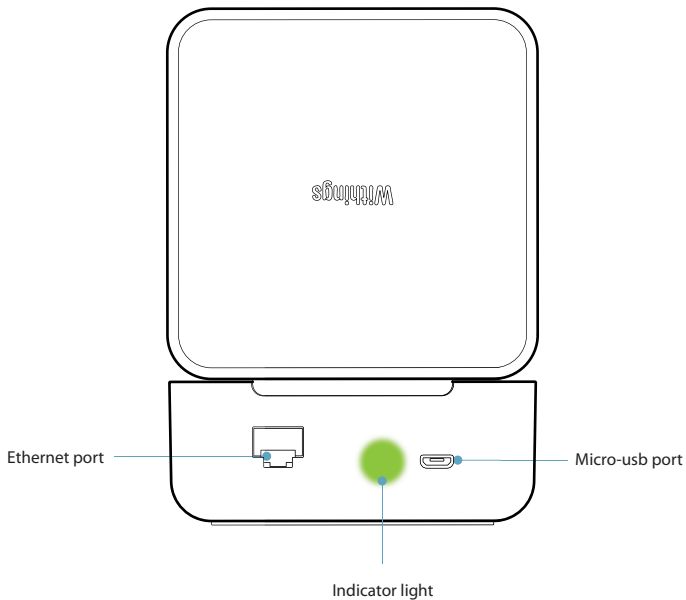


Increase
lullaby volume



Start / Stop lullaby

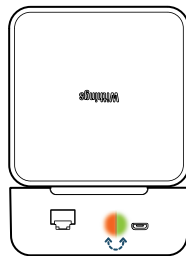
Your Smart Baby Monitor: rear view



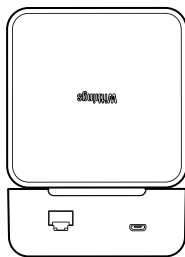
Back color codes



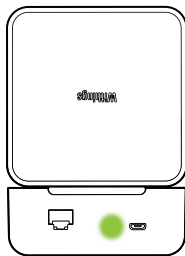
Fixed orange:
start-up in progress



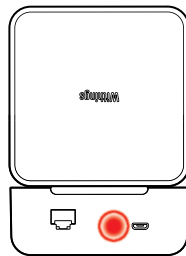
Orange / Green
slow pulse:
no network connectivity



Indicator light off:
no one can connect



Fixed green:
connected



Red, rapid blinking:
battery low

Tips

Connecting my iPhone, iPad or iPod Touch via Wifi.

When you're using your monitor at home, we suggest you connect your iPhone via Wifi in order to enjoy better video quality.

Get alerts whenever I want.

Each parent can choose, individually, which alerts they want to receive (noise, movement, temperature and humidity) via the WithBaby app.

Closing my Smart Baby Monitor.

When you close your Smart Baby Monitor, only the video is turned off. You can still receive alerts or listen in on your baby.

Using my Smart Baby Monitor at a friend's.

Once outside your home, your baby monitor automatically connects to your iPhone via Bluetooth so that you can monitor your baby without any Internet connection.

For other tips visit <http://baby.withings.com>

Troubleshooting

The Smart Baby Monitor does not start.

Make sure the power supply unit is plugged into a wall socket and connected to the back of the Smart Baby Monitor.

The Smart Baby Monitor is on, I've activated Bluetooth, but I don't see my device in the list.

For safety reasons, you only can pair with Bluetooth during the first 10 minutes after turning on the baby monitor. All you need to do is restart your monitor to see it in the list.

If the problem persists, make sure you are at least 15 metres from your Smart Baby Monitor before trying again.

I'm connected via Bluetooth, but the iPhone app does not install automatically.

Install the application manually:

- Go to the App Store by clicking on the icon:



- Search for: WithBaby.

- Install the WithBaby app, launch it and follow the instructions.

Having problems?

We're here to help! Visit us at <http://baby.withings.com>. You'll find all the answers to the most frequently asked questions.

Safety instructions

This product cannot replace adult supervision.

Ensure your baby's health by checking on him/her regularly.

The temperature and humidity sensor only measures the temperature and humidity of the room your baby is in. It cannot be used to adjust the temperature or humidity of the room.

Place the product at least 50 centimetres away from the baby.

This product is not a toy. Do not allow children to play with it.

Only use the power supply unit supplied with the product.

Store the product in a clean, dry place at 0° to 50° C.

Use the product exclusively at temperatures between 10°C and 35°C.

Never use the product for extended periods in direct sunlight.

Withings

User manual v0.4 - October 6, 2011
© 2011 Withings. All rights reserved.
iPad, iPhone and iPod touch are trademarks of Apple inc.

P/N: WBP01

