

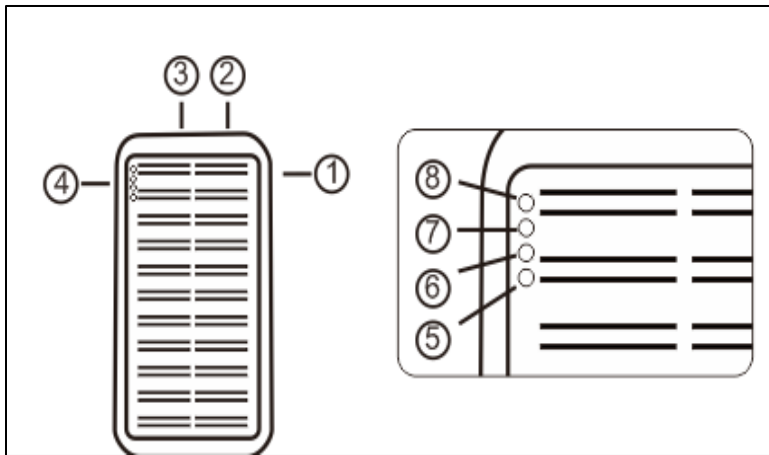
User Manual

ePortTM

BY HOYE GROUP

Introduction:

This **ePort™** solar charger features state of the art circuitry and safe design. It is compatible with most 5V Smart Phones and many other kinds of portable electronic devices.



1. ON/OFF
2. DC Input
3. USB Output
4. Power Indicator Button
5. Power Approx. 25%
6. Power Approx. 50%
7. Power Approx. 75%
8. Power Approx. 100%

Note: When no lights are illuminated on the indicator, recharge immediately.

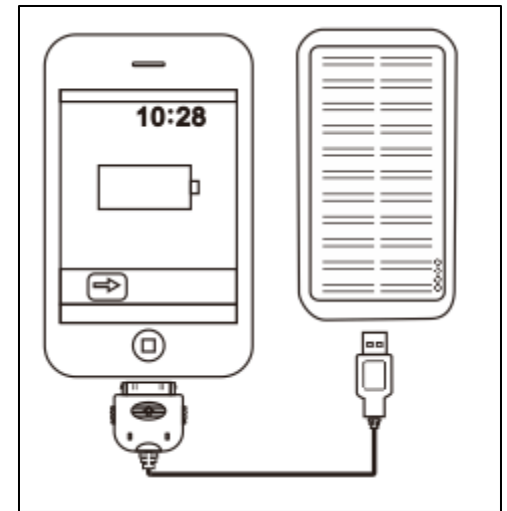
Main Specifications:

Solar Energy Transfer Efficiency	17%
Solar Panel	5V/90mA
Battery Cell Type	Polymer Lithium-ion
Cycle Life	Above 500 cycles
Capacity	3500mAh/12.95Wh
Output	DC 5V/750mA
Input	DC 5V/1A
Charging Time	Approx. 4 hours using 1A AC wall adaptor or Approx.16-20 hours using solar power. (Note: weak sunlight may not charge properly)
Operation Temperature	-5°C ~+55°C (23°F~131°F)

Charging your Mobile Phone/ iPad/Tablets/ other electronics:

Important Notice: Before using your **ePort™** for the first time; please charge to 100% power with supplied USB adaptor cable. Devices charge more quickly if **ePort™** is fully charged.

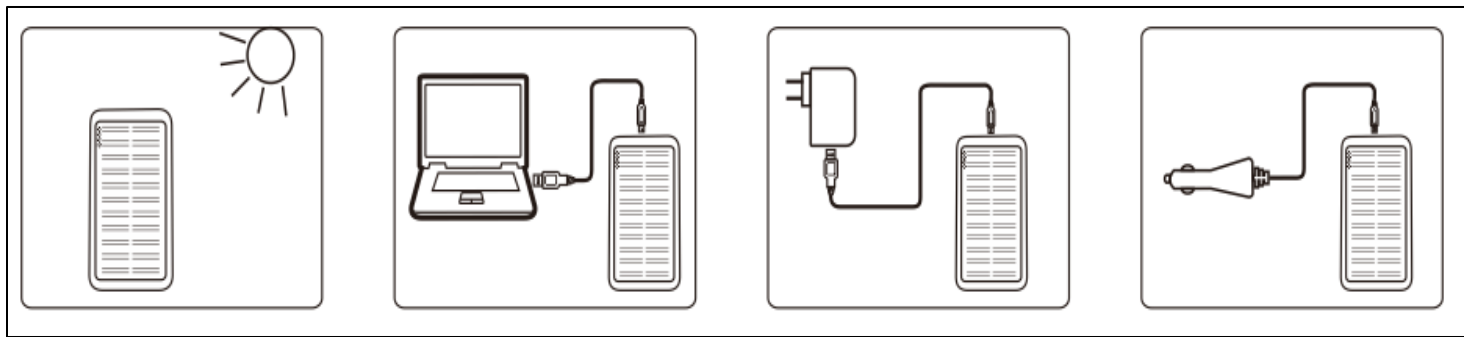
1. Slide “ON/OFF Switch” to “ON.” The **ePort™** is now active and ready for output. Press “Power Indicator Button” to show the power level.
2. Connect the appropriate **ePort™** cable to desired digital device using the USB output, charging begins.
3. When charging is completed slide “ON/OFF Switch” to “OFF”.



Note: Your **ePort™** comes with multiple adaptors for various devices. Please use the correct adaptor for your device.

Recharging your ePort™ :

Recharge using any of these methods:



1. When recharging, the “DC Input” is RED.
2. Once the “DC Input” is BLUE , the charging is complete.
3. The charging time will depend on the method used.

Notice: Please recharge at least every 3 months for maintenance.

Trouble Shooting:

Problems	Possible Causes	Corrective Actions
The power indicator does not indicate a full charge	<ol style="list-style-type: none"> 1. Inadequate charging time 2. The adaptor or device has malfunctioned 	<ol style="list-style-type: none"> 1. Charge it 4 hours continuously using the AC adaptor
Power Indicator lights not illuminated	<ol style="list-style-type: none"> 1. No power left 2. Power indicator button has malfunctioned. 	<ol style="list-style-type: none"> 1. Charge it 4 hours continuously using the AC adaptor
Cannot charge other devices	<ol style="list-style-type: none"> 1. Insufficient power in ePort™ 2. Something wrong with output cable or adaptor 3. Incorrect Adaptor has been used 	<ol style="list-style-type: none"> 1. Charge it 4 hours continuously using the AC adaptor 2. Replace output cable or adaptor 3. Use correct adaptor for device
Cannot charge device fully	Insufficient power in ePort™	Charge it 4 hours continuously using the AC adaptor
There is power left, but ePort™ stopped charging other device	Overcharge failsafe activated	Slide “ON/OFF SWITCH” TO “OFF”, to stop charge

Caution:

1. Do not drop, knock, disassemble or attempt to repair this product by yourself.
2. Do not immerse it into water or make it wet.
3. Do not expose to fire.
4. Please read this user manual carefully before using the ePort™ . Any damage caused by personal wrong actions will void the product limited warranty. In no event will ePort™ or its authorized dealers be liable for incidental, consequential damages, even if such damages result from negligence or other fault.



Waste Electrical and Electronic Equipment Directive:
Dispose of this product with your Local Authority or recycling center.

*“Reduce the size of your carbon footprint,
keep the world green and peaceful.”*

- ePort[™]

