

SmartMove

Data Transfer Software

User's Manual

Version 1.0



May 16, 2014

©2014 by Smart Diagnostic Devices
All rights reserved.

Smart Diagnostic Devices
310 Fourth Avenue South
Suite 5000
Minneapolis, MN 55415
(612) 548-5556
www.smartdiagnosticdevices.com

Table Of Contents

Welcome and Introduction	1
Installation	2
Installing the Software	2
Connecting the Audiometer.....	2
Main Program Window	3
Transferring Data	4
Overview.....	4
To transfer a single audiogram.....	4
To transfer all tagged audiograms.....	4
File Management	6
Viewing Transferred Audiograms	7
Transfer Settings Dialog Box	8
Save As Dialog Box.....	8
Transfer List	10
Error Log	11
Index	12

Welcome and Introduction

Welcome to SmartMove software for audiogram data transfer. This software transfers audiograms from your SMART TONE Automatic Audiometer and places them in a file on your computer. You can open the file in Microsoft Excel® or other programs in order to view, sort, or otherwise work with them.

This manual will explain what the program does, and what you'll need to consider while using it.

Installation

There are two parts to installation, and we'll describe them here.

Installing the Software

You'll install the software on a computer that's running Windows® Vista® SP2, Windows® 7 SP1 or Windows® 8, either 32- or 64-bit. You'll need a free USB port in order to connect the audiometer, and a USB cable.

You may have a disc with the software on it, or you may have downloaded the software from our website.

If you have a disc, put it in the computer's DVD drive. The installation should proceed automatically.

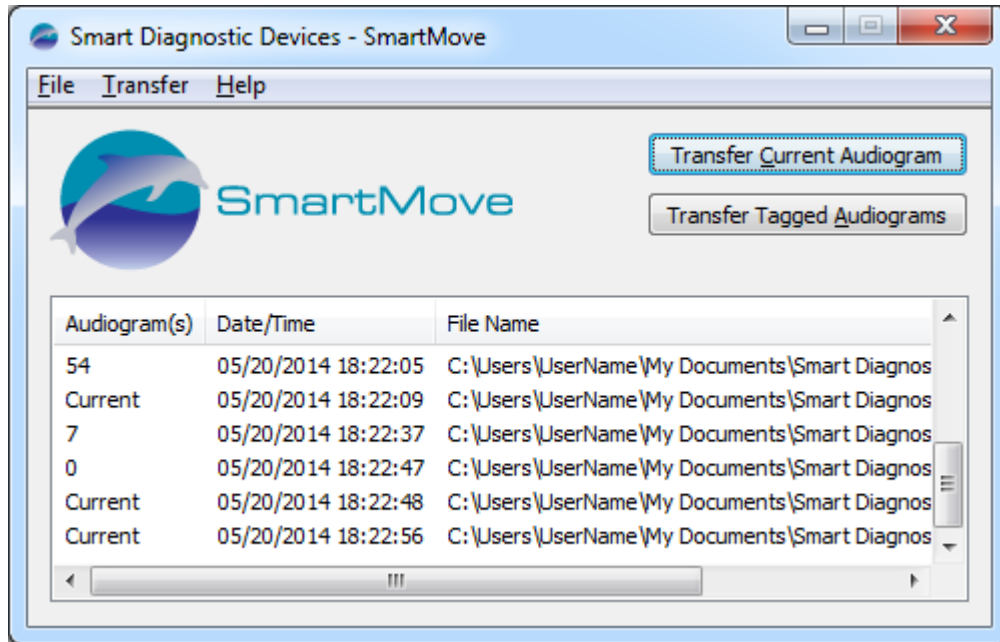
If you downloaded the software, unzip the download and launch setup.exe by double-clicking the file.

Connecting the Audiometer

Last, you'll connect your SMART TONE Automatic Audiometer to the PC using the USB cable. There are no other settings needed. It's that simple.

Main Program Window

SmartMove's Main Program Window is the central hub for all actions. Menu options can take you to any location in the software, and data transfers are initiated from a pair of buttons. Transfers that have already been done are shown in the [Transfer List](#).



Main Program Window

Transferring Data

Overview

The SMART TONE Automatic Audiometer can transfer audiograms in two different ways, and SmartMove can transfer data in both of those ways.

The first way to transfer data is Single-Test Transfer.

- Transfers the audiogram that was just completed
- Saving the audiogram on the SMART TONE is not necessary
- Each new audiogram transferred is appended to the transfer file that you choose in the Transfer Settings dialog box
- Use this method if you plan to always transfer each audiogram as it is done

The second way to transfer data is Batch Transfer.

- Transfers all saved audiograms that are tagged. Because the SMART TONE automatically tags audiograms when they are saved, and automatically untags them when they are transferred, each test is only transferred once
- Use this method if you want to save up a number of audiograms and then transfer them all at once

To transfer a single audiogram

Connect the SMART TONE audiometer to the computer and perform the audiogram.

When the audiogram is complete, press the Transfer Current Audiogram button in the SmartMove program window.

The audiogram will be added to the file specified in [Transfer Settings](#), or a new file will be created if this file doesn't exist.

The transfer will be recorded in the [Transfer List](#).

You can either perform other tests, or [view the data](#).

To transfer all tagged audiograms

Connect the SMART TONE audiometer to the computer that has the saved audiograms that you'd like to transfer.

The saved audiograms must be tagged in order for them to transfer. If you've not transferred them before, they will be tagged, and the SMART TONE will untag them so that they only transfer once. (If you need to transfer them again, see the SMART TONE User's Manual to see how to tag them again.)

Press the Transfer Tagged Audiograms button in the SmartMove program window.

SmartMove User's Manual

If the file exists, you'll be prompted to append the audiograms to this file or overwrite it. Otherwise, SmartMove will create a new file and save the audiograms there.

The transfer will be recorded in the [Transfer List](#).

You can either perform other tests, or [view the data](#).

File Management

All of the transferred audiograms are sent to the file that you specify in the [Transfer Settings](#) dialog box. You may choose to transfer your audiograms to the same file every time, or to different files. Here are some points to keep in mind:

- Naming and locating your files is important. Try to choose a name that is meaningful to you, and a location where you'll be able to find the file.
- It's easy to lose track of where you've transferred audiograms and when. Check the [Transfer List](#) in the program window to see what you've transferred.
- If you want to open your file in Microsoft Excel®, you'll probably want to have a header line at the top of the file. To do this, choose Include Headers in the [Transfer Settings](#) dialog box.
- Remember that headers are added when the file is created; you cannot add headers to an existing file when you are appending audiograms.
- Appending audiograms to an existing file can be handy if you want to keep all of your audiograms together.
- Be careful when overwriting a file; the audiograms that are in the file that is overwritten are deleted, and lost. You'll always be asked to confirm this operation before any data are lost.

Viewing Transferred Audiograms

The easiest way to view your transferred audiograms is to open one of your files in Microsoft Excel®. You can just double-click on the file, and it will open in Microsoft Excel®.

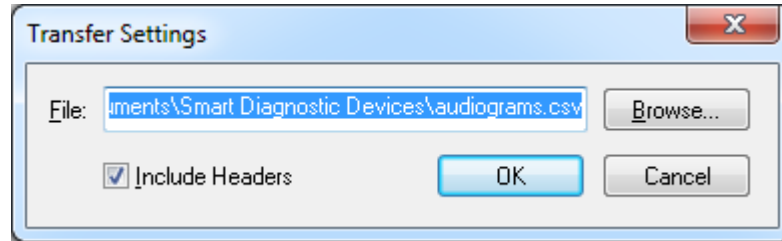
If the file has headers, these will appear as labels at the top of each column in Microsoft Excel®. Otherwise, the columns are not labeled.

Microsoft Excel® is not included with SmartMove software. If you do not have Microsoft Excel® installed on your PC, the file will open in the default program for files with the .csv extension.

If you make changes to any file in these programs and save, take care not to change the test data in order not to corrupt the results.

Transfer Settings Dialog Box

To see the Transfer Settings dialog box, choose Settings from the Transfer menu.



Transfer Settings Dialog Box

File Edit Box

The File edit box shows the path and name of the CSV file that will contain the data being transferred.

- If the file exists already and you are transferring tagged audiograms, you will have the option of overwriting it or appending data to it.
- If the file exists and you are transferring only the current audiogram, SmartMove will append the audiogram to the file.
- If the specified file does not exist, SmartMove will create it upon transfer. The file will be made with a .csv file extension unless you add a different extension in the file name.

The default path and file name are “C:\Users\[UserName]\Documents\Smart Diagnostic Devices\audiograms.csv”. Depending on your operating system, the Documents folder may be displayed in Windows® Explorer® as “My Documents”.

Browse Button

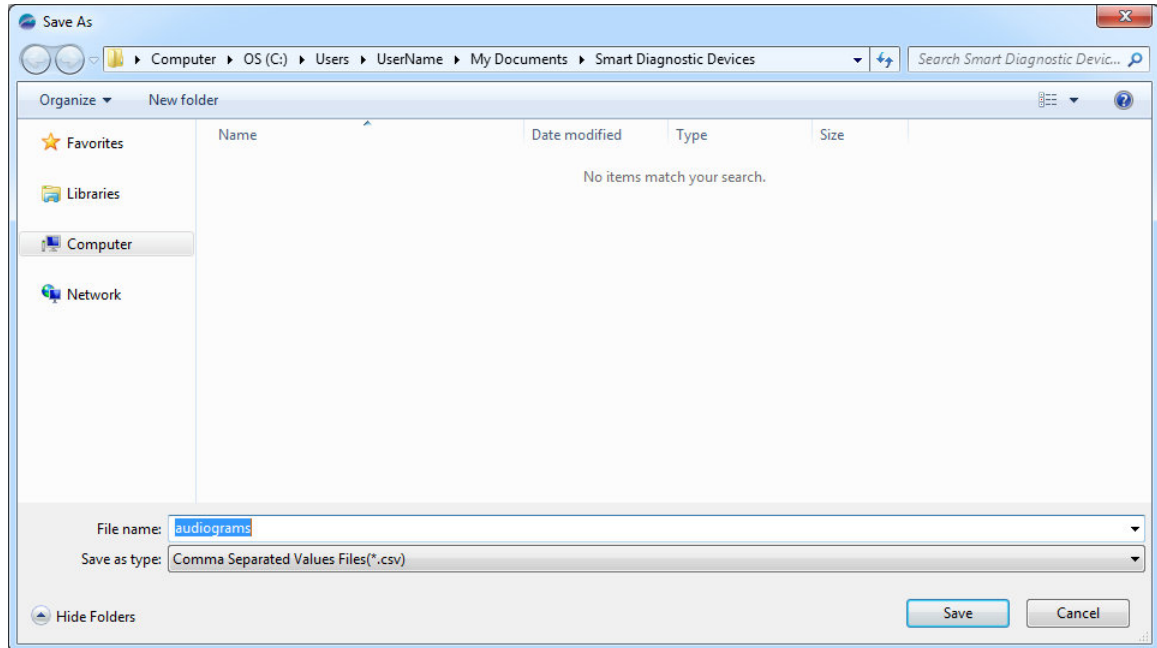
You can use the Browse button to navigate to an existing CSV file. See [Save As Dialog Box](#).

Include Headers Check Box

If the Include Headers check box in the Transfer Settings dialog box is selected, the CSV file will have headers if SmartMove is creating a file or overwriting one. This setting will not have an effect if you are having SmartMove append data to a file, but you can append your data to a file that already has headers.

Save As Dialog Box

You can browse to an existing file by selecting the Browse button in the Transfer Settings dialog box. The Save As dialog box will appear.



Save As Dialog Box

File Name Edit Box

This edit box shows the name of the file. The appearance of the file extension depends on operating system settings of your computer.

- If a file extension is not listed, the extension “.csv” will be automatically added to the file name once you choose Save.
- If a file extension is specified, it will be kept when you choose Save.

“Save as Type” Combo Box

The choices in the “Save as type” combo box are “Comma Separated Values Files (*.csv)” and “All Files”.

Transfer List

The Transfer List in the main window displays the number of audiograms transferred, the date and time of transfer, and the path and name of the CSV file that the tests were saved to. Records are listed in chronological order, with the earliest transfers at the top.

Audiogram(s)	Date/Time	File Name
54	05/20/2014 18:22:05	C:\Users\UserName\My Documents\Smart Diagnos
Current	05/20/2014 18:22:09	C:\Users\UserName\My Documents\Smart Diagnos
7	05/20/2014 18:22:37	C:\Users\UserName\My Documents\Smart Diagnos
0	05/20/2014 18:22:47	C:\Users\UserName\My Documents\Smart Diagnos
Current	05/20/2014 18:22:48	C:\Users\UserName\My Documents\Smart Diagnos
Current	05/20/2014 18:22:56	C:\Users\UserName\My Documents\Smart Diagnos

Transfer List

SmartMove will automatically change the size of the File Name column to fit the file name size. Also, dragging the vertical bars between headings will change column widths. Changes to the column widths cannot be saved, however. The next time the program is opened, the columns will return to their default widths.

The limit is 100 messages. When the limit is reached, the oldest records will be removed from the list as new transfers are listed.

The meanings of the messages in the Audiogram(s) column are shown below.

Audiogram(s) Column Message	Meaning
“Current”	The current audiogram has been transferred. The current audiogram is the most recently performed audiogram.
[Number]	This number of tagged audiograms were transferred.

Error Log

The Error Log displays errors and some program operations. A record is created of each event and listed with a date/time stamp. Items appear in chronological order, with the oldest at the top. You can see the Error Log contents by choosing “Error Log” from the Help menu in the main window.

The Error Log keeps records of the following events:

- Errors
- Program startup
- Program shutdown
- The overwriting of files

Index

- Audiograms column, 10
- Batch Transfer, 4
- date of transfers, 10
- Error Log, 11
- Excel®, Microsoft, 7
- files
 - appending data to, 4, 5, 6, 8
 - default path and name, 8
 - file extension, 8, 9
 - headers, 6, 7, 8
 - management, 6
 - names of, 8, 10
 - overwriting, 5, 6, 8
 - types, 9
- hardware requirements, 2
- headers in files, 6, 7, 8
- installation, 2
- Main Program Window, 3
- Save As dialog box, 8
- Single-Test Transfer, 4
- SMART TONE
 - audiometer, 2, 4
 - time of transfers, 10
- Transfer List, 6, 10
- Transfer Settings dialog box, 8
- transfers. *See also* Batch Transfer, Single-Test Transfer
 - date of, 10
 - list of, 10
 - performing, 4
 - settings for, 8
 - time of, 10
 - viewing transferred data, 7