

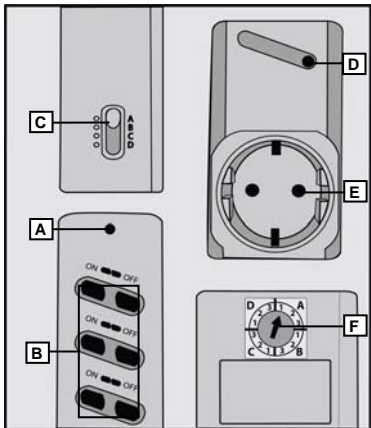
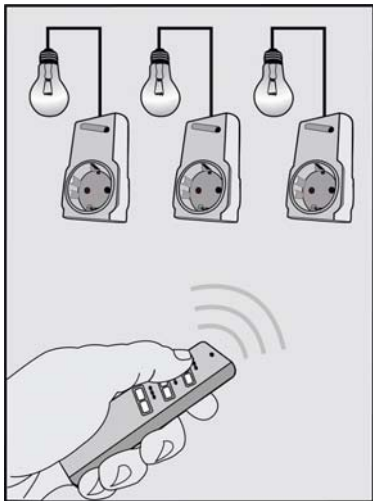


USER'S MANUAL
version 1.1

English

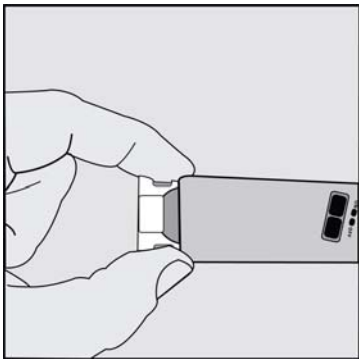


PA3-1000R MAINS SOCKET SWITCH WITH REMOTE CONTROL



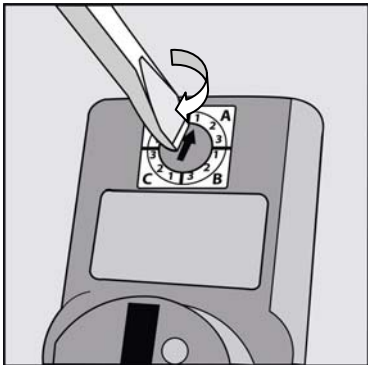
A: Transmit indicator
B: On/off buttons
C: Letter code selector

D: Power indicator
E: Child protection
F: Letter/number code selector



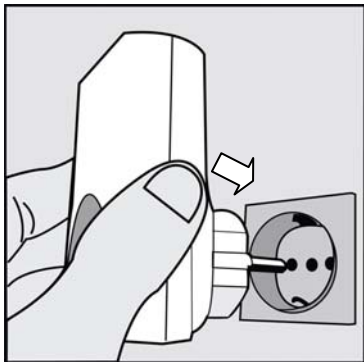
[1] Slide open the battery compartment. Place a battery in the recess of the battery holder. Slide the battery holder with battery in the remote control.

⚠ *The '+' pole of the battery must match the '+' symbol on the holder!*



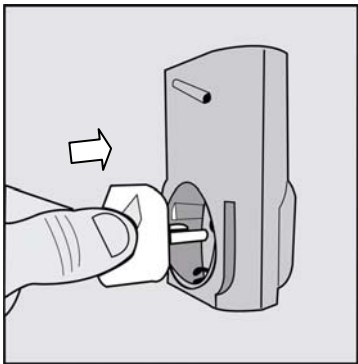
[2] Turn each of the letter/number code selectors of the 3 switches to a desired letter ('house code').

⚠ *The letter must be the same on all 3 switches, but each switch may have a different number! Switches with the same number will be operated simultaneously.*



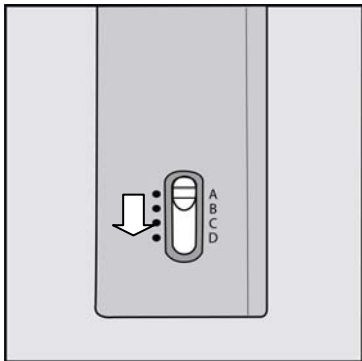
[3] Plug the switches into any mains socket in your home.

⚠ *The switched socket is normally off. The switched socket can only be switched on via a remote control set to the same house code!*

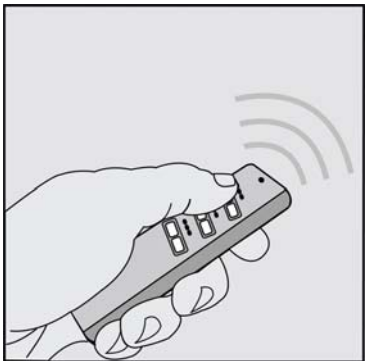


[4] Connect the lamp (or other suitable type of equipment) that is to be controlled to the mains socket switches.


⚠ *Connect a maximum of 1000 Watts to each switch!*



[5] Set the letter code selector on the remote control to the same letter (= 'house code') set on the switches in step [2].




[6] Press on/off under ❶ to operate the switch with code 1. Press the buttons under ❷ and ❸ to operate the switches with codes 2 and 3.

 *The transmit indicator lights up when a button is pressed!*

Remarks **Reminders**

- This wireless product is a combination of a transmitter (remote control) and 3 receivers (mains socket switches).
- Each switch is intended for equipment that consumes a maximum of 1000 Watts.
- The switches are equipped with child protection. This may make it slightly more difficult to insert plugs. If so, push the plug firmly and directly into the switched socket.
- To prevent interference between devices, avoid placing multiple products close to each other. The minimum distance between units should be approx. 50 cm.
- The wireless system can be expanded indefinitely with other COCO products.
- If the product does not work or does not work properly:
 - Check the correct placement and/or function of the battery of the remote control (replace if necessary).
 - Check whether the house codes set in the remote control and the switches match.
 - Someone nearby may be using the same house code. Set the system to a different house code.
 - Check whether there is power at the mains socket to which the switch is connected.
 - Make sure the equipment connected to the switches is switched on.

 **Safety instructions**

- Warning: Even if the product is switched off, voltage may still be present at the switched socket!
- Do not connect any lights or other devices that consume more than 1000 Watts (per switch). Connecting incorrect equipment can cause defects, a short circuit and fire.
- Remove the battery from the remote control if the product will not be used for an extended period.
- Do not expose this product to excessive heat, direct sunlight or moisture.
- Do not attempt to repair this product. If the product is damaged or if you are in doubt about the proper operation, take the product back to the place of purchase.
- Never use COCO products for life support systems or other applications in which equipment malfunctions can have life-threatening consequences.
- Do not use the product in damp areas. Clean the device with a dry cloth.

 **Power**

- Replace the battery if the transmit indicator no longer lights when the on or off button is pressed.
- Only use a 3V CR2032 lithium battery.
- Do not throw the battery into an open fire.
- Respect the local regulations when disposing of batteries.

 **Wireless**

- This product works using a radio signal that passes through walls, windows and doors. The range is maximum 75 metres in the open air. The range indoors is strongly influenced by local conditions such as concrete, glass and metals. On average, the indoor range is approximately 30 metres.
- New double glass often includes a thin metallic layer. This type of glazing (“HR glass”) allows most visible light to pass through but has a negative impact on radio signals. If there is HR glass between the transmitter and receiver, you should expect a significant reduction of the range of the wireless signal.
- This product operates at a frequency of 433.92 MHz. It complies with the essential requirements and other conditions of R&TTE Directive 1999/5/EC and can be used in all EU countries.
- There may be restrictions on the use of this device outside the EU. If this device is used outside the EU, check whether the device complies with the local directives.



This product complies with the essential requirements and other relevant provisions of the applicable European directives. The Declaration of Conformity (DoC) is available at www.coco-technology.com.



If possible, submit this product for recycling after use. Do not dispose of the product with household trash.



Warranty and copyright

This device is covered by a 2-year warranty that begins on the day of purchase. Visit www.coco-technology.com/warranty for additional information. Reprinting of (portions of) this manual without permission from Pan-Trade International B.V. is expressly prohibited.



PAN-TRADE INTERNATIONAL B.V.

P.O. BOX 126
4760 AC ZEVENBERGEN
THE NETHERLANDS
www.coco-technology.com



Declaration of Conformity

Pan-Trade International BV declares that the COCO product, model:

type designation	PA3-1000R MAINS SOCKET SWITCH WITH REMOTE CONTROL
item number	74026

is in compliance with the essential requirements and other relevant provisions of directives R&TTE 1999/5/EC, EMC 2004/108/EC and LVD 2006/95/EC and is compatible with the standards EN 300 220-1/3, EN 55015 and EN 301 489-1/3.

Manufacturer / Authorised representative,



M.A. Hoekstra, managing director
Zevenbergen, 2008-01-30