

PRO GUN CHOP TRIGGER MANUAL RT-3000



MagnumVenusPlastech

Rev. 12/2012



MagnumVenusPlastech

CORPORATE HEADQUARTERS and MANUFACTURING

11692 56th Court * Clearwater, FL 33760 * Tel 727-573-2955 * Fax 727-571-3636

TECHNOLOGY CENTER and MANUFACTURING

1862 Ives Ave. * Kent, WA 98032 * Tel 253-854-2660 * Fax 253-854-1666

MVP Plastech UK

Chilsworthy Beam, Gunnislake, Cornwall, PL18 9AT UK, * Tel: +44 (0) 1822 832621

Fax: +44 (0) 1822 833999

www.mvpind.com

TABLE OF CONTENTS:

SECTION:	Page
TERMS & CONDITIONS OF SALE	4
SAFETY & WARNING INFORMATION	6
INTRODUCTION	15
MAKING CONNECTIONS	16
START-UP & SHUT-DOWN PROCEDURES	20
PARTS DRAWINGS	27
HV PRO GUN OPTIONS	32
REVISION INFORMATION	34



Terms & Conditions of Sale:

- Customs duties, import and export licenses and certificates, if required, and all local taxes are excluded from this offer. If US state and local taxes are applicable and not included in equipment invoice, such amount may be invoiced later.
- Delivery dates or shipping schedules are approximate and based upon the most recent information available at the time of order. Dates may be adjusted upon receipt of subsequent information or modification of order. Seller will ship prior to the delivery date if possible, but not without Buyer's consent on Advanced Equipment sales.
- All contract dates and timelines begin upon receipt at MVP of customer purchase order, signed Terms and Conditions of Sale (if applicable), and down payment per quotation (if applicable).
- If shipments are delayed by the Buyer, or because the Buyer's account is in arrears, payments shall become due on the date when the Seller is prepared to make shipment. Products held by the Seller for the Buyer shall be at the risk and expense of the Buyer.
- Damages, defects or shortages must be communicated immediately to MVP. Discrepancy in pricing and/or quantities on invoices must be reported within 30 days of the invoice date. Claims made 30 days or more following the invoice date will not be honored.
- Permission to return items must be requested and granted in advance. No credit will be given if items are returned prior to requesting and receiving permission. All returns are subject to a restocking fee. The standard 15% charges may be increased or decreased depending on the reason for the return. Special ordered items may not be returned.
- Seller warrants that the mechanical operation of the goods as specified shall be free from faults in respect to materials and workmanship for a period of 12 months for parts from the date of invoice. For systems, 12 months from start-up or, if earlier, 18 months from the date of the Bills of Lading. The warranty does not cover general wear and tear or damage due to negligence or improper use. Seller's liability under the warranty shall be limited solely to repair or replacement costs, and has no responsibility for reimbursing repair cost incurred by Buyer in connection with equipment without first giving written authorization for such charges. Seller makes no express warranties except those set forth in this agreement, and disclaims all other warranties, expressed or implied, including without limitation, implied warranties of non-infringement merchantability and fitness for a particular purpose. Seller accepts no liability for loss of production, loss of profits, or other direct or indirect damages. In any claim by the Buyer



against the Seller in respect of the goods, the liability of the Seller shall be limited to the value of the goods.

- Many factors beyond Seller's control contribute to the success of Buyer's finished products, such as raw materials used to manufacture the product. Equipment is warranted to perform to specifications detailed in quotation, but Seller is not liable for quality or quantity of finished products produced by Buyer.
- The country of origin is the United States of America. Sale, installation and all rights of the parties are governed by the laws of the state of Florida. Venue with regard to any litigation shall be in Pinellas County, Florida. The parties agree to waive all rights to trial by jury as to any and all disputes.
- The goods remain the property of the Seller until full payment is received.
- Sale of equipment is subject to application and issuance of proper US Government export license and regulations, if applicable.
- Installation of equipment is responsibility of Buyer and Seller, with cost responsibility and number of days provided as detailed in original customer Quotation. Seller will provide installation supervision personnel within 30 days of customer request. If installation is delayed by the Buyer more than six months from the date of shipment, or if customer facility or material/parts are not prepared for installation, seller will invoice full installation costs, up to \$1,250 a day plus expenses, for each MVP installation technician on site. Seller has the option to waive this fee at its discretion.
- Parties shall be excused for delays caused by embargoes, acts of civil or military authorities, Acts of God, or other circumstances beyond the reasonable control of the parties. Notification of such delays must be made in writing within ten days of occurrence.

Our agreement supersedes any previous agreement and applies in full.



SAFETY & WARNING INFORMATION

OPERATING YOUR POLYESTER SYSTEM SAFELY

1. Introduction

Any tool, if used improperly, can be dangerous. Safety is ultimately the responsibility of those using the tool. In like manner, safe operation of polyester processes is the responsibility of those who use such processes and those who operate the equipment. This manual outlines procedures to be followed in conducting polyester operations safely. This system has been specifically designed for use of Polyester Resin, Gel-Coat, and Methyl Ethyl Ketone Peroxides (MEKP) applications. Other formulations or blends considered for use in this equipment is strictly prohibited without the expressed consent by Magnum Venus Plastech Inc. Magnum Venus Plastech cannot eliminate every danger nor foresee every circumstance that might cause an injury during equipment operation. Some risks, such as the high pressure liquid stream that exits the spray tip, are inherent to the nature of the machine operation and are necessary to the process in order to manufacture the end-product. For this reason, ALL personnel involved in polyester operations should read and understand the Safety Manual. It is very important for the safety of employees involved in the operation that equipment operators, maintenance and supervisory personnel understand the requirements for safe operation. Each user should examine his own operation, develop his own safety program and be assured that his equipment operators follow correct procedures. Magnum Venus Plastech hopes that this manual is helpful to the user and recommends that the precautions in this manual be included in any such program. Magnum Venus Plastech recommends this Safety Manual remain on your equipment at all times for your personnel safety. In addition to the manual, Magnum Venus Plastech recommends that the user consult the regulations established under the Occupational Safety & Health Act (OSHA), particularly the following sections:

1910.94 Pertaining to Ventilation.

1910.106 Pertaining to flammable liquids

1910.107 Pertaining to spray finishing operations, particularly Paragraph (m) Organic Peroxides and Dual Component Coatings.

Other standards and recognized authorities to consult are the National Fire Protection Association (NFPA) bulletins as follows:

NFPA No.33 Chapter 14, Organic Peroxides and Dual Component Materials

NFPA No.63 Dust Explosion Prevention

NFPA No.70 National Electrical Code

NFPA No.77 Static Electricity

NFPA No.91 Blower and Exhaust System

NFPA No.654 Plastics Industry Dust Hazards

Type of Fire Extinguishing equipment recommended: Fire Extinguisher – code ABC, rating number 4a60bc.

Extinguishing Media – Foam, Carbon Dioxide, Dry Chemical, Water Fog.

Copies of the above bulletins are available, at a nominal charge from:

National Fire Protection Association
470 Atlantic Avenue
Boston, MA 02210

Research Report No.11 of the American Insurance Association deal with “Fire, Explosion and Health Hazards of Organic Peroxides”. It is published by:

American Insurance Association
85 John Street
New York, NY 10038

Local codes and authorities also have standards to be followed in the operation of your spraying equipment. Your insurance carrier will be helpful in answering questions that arise in your development of safe procedures.

1.2 Personal Safety Equipment

Magnum Venus Plastech recommends the following Personal Safety Equipment for conducting safe operations of the Polyester Systems:

Magnum Venus Plastech recommends that the user consult the state and local regulations established for all Safety equipment listed.

2.0 Material Safety

2.1 Hazards Associated with Laminating Operations

The major hazards which should be guarded against in polyester laminating operations are those associated with:

1. The flammability and explosion dangers of the catalyst normally used – Methyl Ethyl Ketone Peroxide (MEKP).
2. The flammability dangers of clean-up solvents sometimes used (Magnum Venus Plastech recommends that clean-up solvents be non-flammable), and of resin diluents used, such as styrene.
3. The flammability dangers of catalyst diluents, if used. (Magnum Venus Plastech recommends that catalyst not be diluted.
4. The flammability dangers of the uncured liquid resins used.
5. The combustibility dangers of the cured laminate, accumulations of over spray, and laminate sandings.
6. The toxicity dangers of all the chemicals used in laminating operations with respect to ingestion, inhalation and skin and eye hazards.

2.2 Catalyst (Methyl Ethyl Ketone Peroxide)

MEKP is among the more hazardous materials found in commercial channels. The safe handling of the “unstable (reactive)” chemicals presents a definite challenge to the plastics industry. The highly reactive property which makes MEKP valuable to the plastics industry in producing the curing reaction of polyester resins also produces the hazards which require great care and caution in its storage, transportation, handling, processing and disposal. MEKP is a single chemical. Various polymeric forms may exist which are more or less hazardous with respect to each other. These differences may arise not only from different molecular structures (all are, nevertheless, called “MEKP”) and from possible trace impurities left from the manufacture of the chemicals, but may also arise by contamination of MEKP with other materials in its storage or use. Even a small amount of contamination with acetone, for instance, may produce an extremely shock-sensitive and explosive compound.

Contamination with promoters or materials containing promoters, such as laminate sandings, or with any readily oxidizing material, such as brass or iron, will cause exothermic “redox” reactions which can become explosive in nature. Heat applied to MEKP, or heat build-up from contamination reactions can cause it to reach what is called its Self-Accelerating Decomposition Temperature (SADT).

Researchers have reported measuring pressure rates-of-rise well in excess of 100,000 psi per second when certain MEKP's reach their SADT. (For comparison, the highest pressure rate-of-rise listed in NFPA Bulletin NO.68, “Explosion Venting”, is 12,000 psi per second for an explosion of 12% acetylene and air. The maximum value listed for a hydrogen explosion is 10,000 psi per second. Some forms of MEKP, if allowed to reach their SADT, will burst even an open topped container. This suggests that it is not possible to design a relief valve to vent this order of magnitude of pressure rate-of-rise. The user should be aware that any closed container, be it a pressure vessel, surge chamber, or pressure accumulator, could explode under certain conditions. There is no engineering substitute for care by the user in handling organic peroxide catalysts. If, at any time, the pressure relieve valve on top of the catalyst tank should vent, the area should be evacuated at once and the fire department called. The venting could be the first indication of a heat, and therefore, pressure build-up that could eventually lead to an explosion. Moreover, if a catalyst tank is sufficiently full when the pressure relief valve vents, some catalyst may spray out, which could cause eye injury. For this reason, and many others, anyone whose job puts them in an area where this vented spray might go, should always wear full eye protection even when laminating operations are not taking place.

Safety in handling MEKP depends to a great extent on employee education, proper safety instructions and safe use of the chemicals and equipment. Workers should be thoroughly informed of the hazards that may result from improper handling of MEKP, especially in regards to contamination, heat, friction and impact. They should be thoroughly instructed regarding the proper action to be taken in the storage, use and disposal of MEKP and other hazardous materials used in the laminating operation. In addition, users should make every effort to:

- A. Store MEKP in a cool, dry place in original containers away from direct sunlight and away from other chemicals.
- B. Keep MEKP away from heat, sparks and open flames.
- C. Prevent contamination of MEKP with other materials, including polyester over spray and sandings, polymerization accelerators and promoters, brass, aluminum and non-stainless steels.

- D. Never add MEKP to anything that is hot, since explosive decomposition may result.
- E. Avoid contact with skin, eyes and clothing. Protective equipment should be worn at all times. During clean-up of spilled MEKP, personal safety equipment, gloves and eye protection must be worn. Firefighting equipment should be at hand and ready.
- F. Avoid spillage, which can heat up to the point of self-ignition.
- G. Repair any leaks discovered in the catalyst system immediately, and clean up the leaked catalyst at once in accordance with the catalyst manufacturer's instructions.
- H. Use only original equipment or equivalent parts from Magnum Venus Plastech in the catalyst system (i.e.: hoses, fitting, etc.) because a dangerous chemical reaction may result between substituted parts and MEKP.
- I. Catalyst accumulated from the purging of hoses or the measurement of fluid output delivered should never be returned to the supply tank, such catalyst should be diluted with copious quantities of clean water and disposed of in accordance with the catalyst manufacturer's instructions.



The extent to which the user is successful in accomplishing these ends and any additional recommendations by the catalyst manufacturer determines largely the safety that will be present in his operation.

2.3 Clean-Up Solvents and Resin Diluents

WARNING

A hazardous situation may be present in your pressurized fluid system! Hydrocarbon Solvents can cause an explosion when used with aluminum or galvanized components in a closed (pressurized) fluid system (pump, heaters, filters, valves, spray guns, tanks, etc.). The explosion could cause serious injury, death and/or substantial property damage. Cleaning agents, coatings, paints, etc. may contain Halogenated Hydrocarbon Solvents. Some Magnum Venus Plastech spray equipment includes aluminum or galvanized components and will be affected by Halogenated Hydrocarbon Solvents.

- A. There are three key elements to the Halogenated Hydrocarbon (HHC) solvent hazard.
- The presence of HHC solvents. 1,1,1 – Trichloroethane and Methylene Chloride are the most common of these solvents. However, other HHC solvents are suspect if used; either as part of paint or adhesives formulation, or for clean-up flushing. b. Aluminum or Galvanized Parts. Most handling equipment contains these elements. In contact with these metals, HHC solvents could generate a corrosive reaction of a catalytic nature.
 - Equipment capable of withstanding pressure. When HHC solvent contact aluminum or galvanized parts inside a closed container such as a pump, spray gun, or fluid handling system, the chemical reaction can, over time, result in a build-up of heat and pressure, which can reach explosive proportions.

When all three elements are present, the result can be an extremely violent explosion. The reaction can be sustained with very little aluminum or galvanized metal; any amount of aluminum is too much.

A. The reaction is unpredictable. Prior use of an HHC solvent without incident (corrosion or explosion) does NOT mean that such use is safe. These solvents can be dangerous alone (as a clean-up or flushing agent) or when used as a component or a coating material. There is no known inhibitor that is effective under all circumstances. Furthermore, the mixing of HHC solvents with other materials or solvents, such as MEKP, alcohol, and toluene, may render the inhibitors ineffective.

B. The use of reclaimed solvents is particularly hazardous. Reclaimers may not add any inhibitors. Also, the possible presence of water in reclaimed solvents could feed the reaction.

C. Anodized or other oxide coatings cannot be relied upon to prevent the explosive reaction. Such coatings can be worn, cracked, scratched, or too thin to prevent contact. There is no known way to make oxide coatings or to employ aluminum alloys, which will safely prevent the chemical reaction under all circumstances.

D. Several solvent suppliers have recently begun promoting HHC solvents for use in coating systems. The increasing use of HHC solvents is increasing the risk. Because of their exemption from many State Implementation Plans as Volatile Organic Compounds

(VOC's), their low flammability hazard, and their not being classified as toxic or carcinogenic substances, HHC solvents are very desirable in many respects.



WARNING: Do not use Halogenated Hydrocarbon solvents in pressurized fluid systems having aluminum or galvanized wetted parts.

NOTE: Magnum Venus Plastech is aware of NO stabilizers available to prevent Halogenated Hydrocarbon solvents from reaction under all conditions with aluminum components in closed fluid system. TAKE IMMEDIATE ACTION... Halogenated Hydrocarbon solvents are dangerous when used with aluminum components in a closed fluid system.

A. Consult your material supplier to determine whether your solvent or coating contains Halogenated Hydrocarbon Solvents.

B. Magnum Venus Plastech recommends that you contact your solvent supplier regarding the best non-flammable clean-up solvent with the heat toxicity for your application.

C. If, however, you find it necessary to use flammable solvents, they must be kept in approved, electrically grounded containers.

D. Bulk solvent should be stored in a well-ventilated, separate building, 50 feet away from your main plant.

E. You should allow only enough solvent for one day's use in your laminating area.

F. "NO SMOKING" signs must be posted and observed in all areas of storage or where solvents and other flammable materials are used.

G. Adequate ventilation (as covered in OSHA Section 1910.94 and NFPA No.91) is important wherever solvents are stored or used, to minimize, confine and exhaust the solvent vapors.

H. Solvents should be handled in accordance with OSHA Section 1910.106 and 1910.107.

2.4 Catalyst Diluents

Magnum Venus Plastech spray-up and gel-coat systems currently produced are designed so that catalyst diluents are not required. Magnum Venus Plastech, therefore, recommends that diluents not be used. This avoids the possible contamination which could lead to an explosion due to the handling and mixing of MEKP and diluents. In addition, it eliminates any problems from the diluents being contaminated through rust particles in drums, poor quality control on the part of the diluent suppliers, or any other reason. If, however, diluents are absolutely required, contact your catalyst supplier and follow his instructions explicitly. Preferable, the supplier should premix the catalyst to prevent possible “on the job” contamination while mixing.

WARNING

If diluents are not used, it should be remembered that catalyst spillage, gun, hose and packing leaks are potentially more hazardous, since each drop contains a higher concentration of catalyst, and therefore will react quicker with over spray and the leak.

2.5 Cured Laminate, Overspray and Laminate Sandings Accumulation

A. Remove all accumulations of overspray, FRP sandings, etc. from the building as they occur. If this waste is allowed to build up, spillage of catalyst is more likely to start a fire, in addition, the fire would burn hotter and longer.

B. Floor coverings, if used, should be non-combustible.

C. Spilled or leaked catalyst may cause a fire if it comes in contact with an FRP product, oversprayed chop or resin, FRP sandings or any other material with MEKP.

To prevent this spillage and leakage, you should:

1. Maintain your Magnum Venus Plastech System. Check the gun several times daily for catalyst and resin packing or valve leaks. REPAIR ALL LEAKS IMMEDIATELY.

2. Never leave the gun hanging over, or lying inside the mold. A catalyst leak in this situation would certainly damage the part, possibly the mold, and may cause a fire.

3. Inspect resin and catalyst hoses daily for wear or stress at the entry and exits of the boom sections and at the hose and fittings. Replace if wear or weakness is evident or suspected.

4. Arrange the hoses and fiberglass roving guides so that the fiberglass strands DO NOT rub against any of the hoses at any point. If allowed to rub, the hose will be cut through, causing a hazardous leakage of material which could increase the danger of fire. Also, the material may spew onto personnel in the area.

2.7 Toxicity of Chemicals

A. Magnum Venus Plastech recommends that you consult OSHA Sections 1910.94, 1910.106, 1910.107 and NFPA No.33, Chapter 14, and NFPA No.91.

B. Contact your chemical supplier(s) and determine the toxicity of the various chemicals used as well as the best methods to prevent injury, irritation and danger to personnel.

C. Also determine the best methods of first aid treatment for each chemical used in your plant.

2.8 Treatment of Chemical Injuries

Great care should be used in handling the chemicals (resins, catalyst and solvents) used in polyester systems. Such chemicals should be treated as if they hurt your skin and eyes and as if they are poison to your body. For this reason, Magnum Venus Plastech recommends the use of protective clothing and eye wear in using polyester systems. However, users should be prepared in the event of such an injury. Precautions include:

1. Know precisely what chemicals you are using and obtain information from your chemical supplier on what to do in the event the chemical gets onto your skin or into the eyes, or is swallowed.
2. Keep this information together and easily available so that it may be used by those administering first aid or treating the injured person.
3. Be sure the information from your chemical supplier includes instructions on how to treat any toxic effects the chemicals have.



WARNING

Contact your doctor immediately in the event of any injury and give him the information you have collected. If your information includes first aid instructions, administer first aid immediately while you are contacting your doctor.

Fast treatment of the outer skin and eyes that contact such chemicals generally includes immediate and thorough washing of the exposed skin and immediate and continuous flushing of the eyes with lots of clean water for at least 15 minutes or more. These general instructions of first aid treatment, however, may be incorrect for some chemicals; that is why you must know the chemicals and treatment before an accident occurs. Treatment for swallowing a chemical frequently depends upon the nature of the chemical.

NOTE: Refer to your System User Manual for complete and detailed operating instructions and service information.

3.0 Equipment Safety

WARNING

Magnum Venus Plastech suggests that personal safety equipment such as **EYE GOGGLES, GLOVES, EAR PROTECTION, and RESPIRATORS** be worn when servicing or operating this equipment. Ear protection should be worn when operating a fiberglass chopper to protect against hearing loss since noise levels can be as high as 116 dB (decibels). This equipment should only be operated or serviced by technically trained personnel!

WARNING

Never place fingers, hands, or any body part near or directly in front of the spray gun fluid tip. The force of the liquid as it exits the spray tip can cause serious injury by shooting liquid through the skin. **NEVER LOOK DIRECTLY INTO THE GUN SPRAY TIP OR POINT THE GUN AT OR NEAR ANOTHER PERSON. (TREAT THE GUN AS IF IT WERE A LOADED PISTOL.)**

3.1 Emergency Stop Procedures

The following steps should be followed in order to stop the machinery in an emergency situation

1. The ball valve located where the air enters the power head of the resin pump, should be moved to the "OFF" or closed position. To do this, simply rotate the lever on the ball valve 90 degrees. Doing this will cause all the system air to bleed out of the system in a matter of a few seconds, making the system incapable of operating

NOTE: Step 2 is a precautionary step and should be followed whenever the above mentioned ball valve is activated to the stop mode. Failure to do so, can damage the regulators and components on reactivating to the "ON" position.

2. Turn all system regulators to the "OFF" position (counter-clockwise) position

NOTE: Verify that the Catalyst relief line, located on the catalyst manifold, and the resin return line, located on the resin filter, are secured relieving catalyst and resin fluid pressure.

3. Catalyst pressure in the catalyst pump can be eliminated by rotating the ball valve on the catalyst manifold 90 degrees to the "open" or "on" position.

Note: The "open" or "on" position is when the ball valve handle is parallel (in line) with the ball valve body. The "closed" or "off" position is when the ball valve handle is perpendicular (across) the ball valve body.

4. Resin pressure in the resin pump can be eliminated by rotating the ball valve on the resin filter 90 degrees to the "open" or "on" position. Place a container under the ball valve to catch any resin that is ejected out of the valve.

3.2 Grounding

Grounding an object means providing an adequate path for the flow of the electrical charge from the object to the ground. An adequate path is one that permits charge to flow from the object fast enough that it will not accumulate to the extent that a spark can be formed. It is not possible to define exactly what will be an adequate path under all conditions since it depends on many variables. In any event, the grounding means should have the lowest possible electrical resistance. Grounding straps should be installed on all loose conductive objects in the spraying area. This includes material containers and equipment. Magnum Venus Plastech recommends grounding straps be made of AWG No.18 stranded wire as a minimum and the larger wire be used where possible. NFPA Bulletin No77 states that the electrical resistance of such a leakage path may be as low as 1 meg ohm (10 ohms) but that resistance as high as 10,000 meg ohms will produce an adequate leakage path in some cases. Whenever flammable or combustible liquids are transferred from one container to another, or from one container to the equipment, both containers or container and equipment shall be effectively bonded and grounded to dissipate static electricity. For further information, see **National Fire Protection Association (NFPA) 77**, titled "Recommended Practice on Static Electrical". Refer especially to section 7-7 titled "Spray Application of Flammable and Combustible Materials". Check with local codes and authorities for other specific standards that might apply to your application. NEVER USE HARD MATERIALS SUCH AS WIRE, PINS, ETC., TO CLEAR A PLUGGED GUN. HARD MATERIALS CAN CAUSE PERMANENT DAMAGE. DAB WITH A BRISTLE BRUSH, BLOW BACKWARDS WITH AIR UNTIL CLEAR WHILE WEARING A PROTECTIVE EYE SHIELD. REPEAT AS MANY TIMES AS NECESSARY. DO NOT PERFORM ANY MAINTENANCE OR REPAIRS UNTIL YOU HAVE FOLLOWED THE PRECAUTIONS STATED ABOVE. IF YOU, AS AN EQUIPMENT OPERATOR OR SUPERVISOR, DO NOT FEEL THAT YOU HAVE BEEN ADEQUATELY TRAINED OR INSTRUCTED AND THAT YOU LACK THE TECHNICAL KNOWLEDGE TO OPERATE OR PERFORM MAINTENANCE ON A PIECE OF MAGNUM VENUS PLASTECH EQUIPMENT, PLEASE CALL MAGNUM VENUS PLASTECH BEFORE OPERATING OR PERFORMING MAINTENANCE ON THE EQUIPMENT. IF YOU HAVE ANY QUESTIONS REGARDING THE ABOVE PRECAUTIONS OR ANY SERVICE OR OPERATION PROCEDURES, CALL YOUR MAGNUM VENUS PLASTECH DISTRIBUTOR OR MAGNUM VENUS PLASTECH.

NOTICE: *All statements, information and data given herein are believed to be accurate and reliable but are presented without guaranty, warranty or responsibility of any kind express or implied. The user should not assume that all safety measures are indicated or that other measures are not required.*

DANGER: *Contaminated catalyst may cause Fire or Explosion. Before working on the catalyst pump or catalyst accumulator, wash hands and tools thoroughly. Be sure work area is free of dirt, grease or resin. Clean catalyst system components with clean water only.*

DANGER: *Eye, skin and respiration hazard. The Catalyst, MEKP, may cause blindness, skin irritation or breathing difficulty. Keep hands away from face. Keep food and drink away from work area.*

WARNING: *Please refer to your catalyst manufacturer's safety information regarding the safe handling and storage of catalyst. Wear appropriate safety equipment as recommended.*



Introduction:

The RT-3000 Pro Gun Chop Trigger is used to manually control the Pro Gun and Chopper. This small control box connects to the unit with approximately 12 feet of line allowing the operator to control the Auto Pro Gun and chopper from a position away from the gun.

The RT-3000 gives the option to control the following components:

- **Chopper ON**
- **Chopper OFF**
- **Gun ON (Resin)**
- **Gun OFF (Resin)**
- **Solvent Purge / Flush**

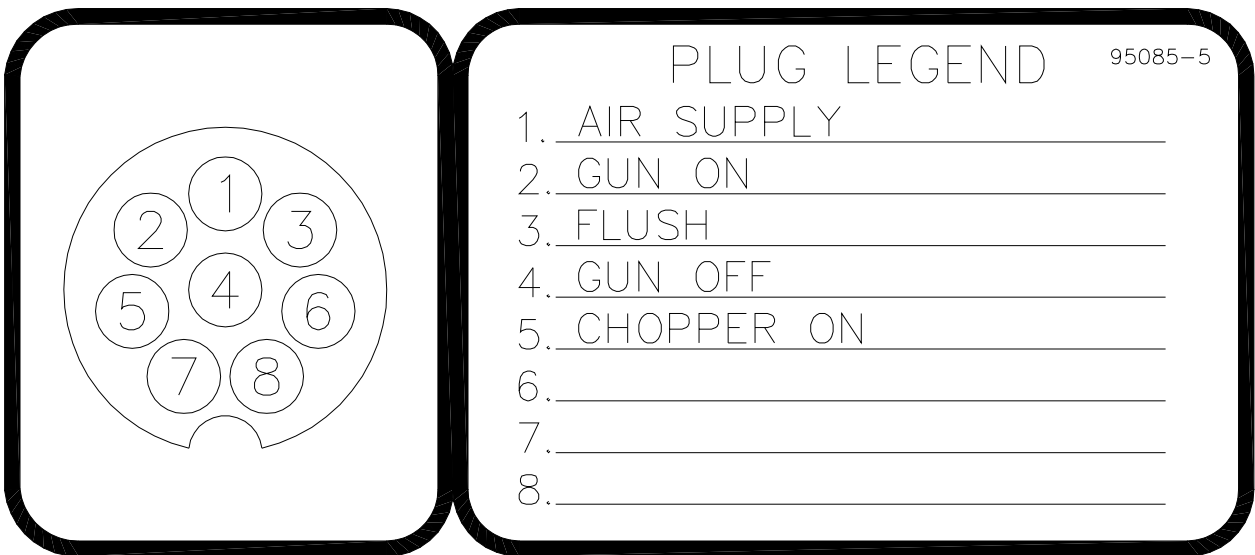




Making Connections:

To make the connections disassemble the connector plug attached to the side of the control box. Use 1/4 inch poly tube, MVP number MS-2052-1 and Hose Clamp 7701-2-1 to make connections between the connector plug and component. Connections are made by sliding the Hose Clamp onto the correct poly tube pushing the poly tube onto the correct barb fitting and thread the Hose Clamp over the poly tube and barb fitting. It is a good idea to mark both ends of each piece of tubing to aid in trouble shooting and plumbing.

Below is a diagram of the signal connections for the RT-3000.



It is best to organize and plan the routing of the tubing as it is installed to make the installation easier and look better. Use plastic ties or tape to pair similar tubing and control the tubing bundle.

Plug Disassembly:

1. Remove the four screws holding the outer shell of the plug together.
2. Remove the inner guard from the plug shell. Remember to put the tubing through the inner guard before connecting it to the barb fitting.



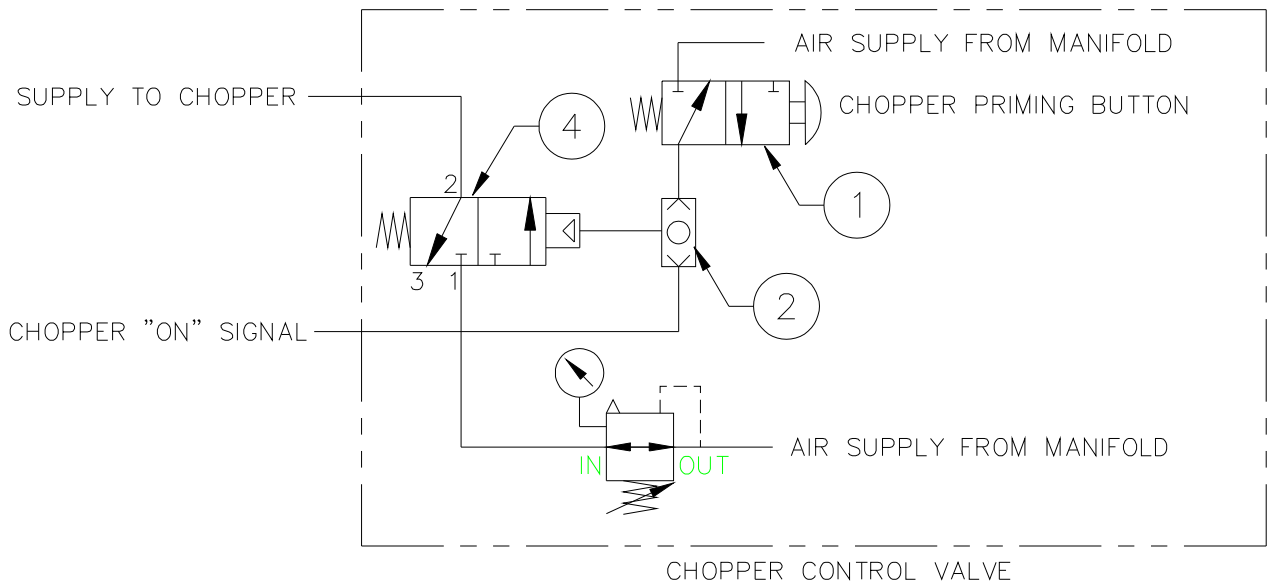
Air Supply In:

3. Locate or create an air supply from the air manifold.
4. Mark both ends of the poly tube appropriately and put one end through the inner guard and slide the hose clamp onto the tube and then attach it to the #1 barb fitting. (see diagram above)
5. Connect the other end of the poly tube to the air supply fitting located on the air manifold.

Chopper (Roving Cutter):

6. Mark both ends of the poly tube appropriately and put one end through the inner guard and slide the hose clamp onto the tube and then attach it to the #5 barb fitting (Chopper "ON" signal). (see diagram above)
7. Connect the other end to the fitting located at the Chopper Control Valve. (see drawing below)

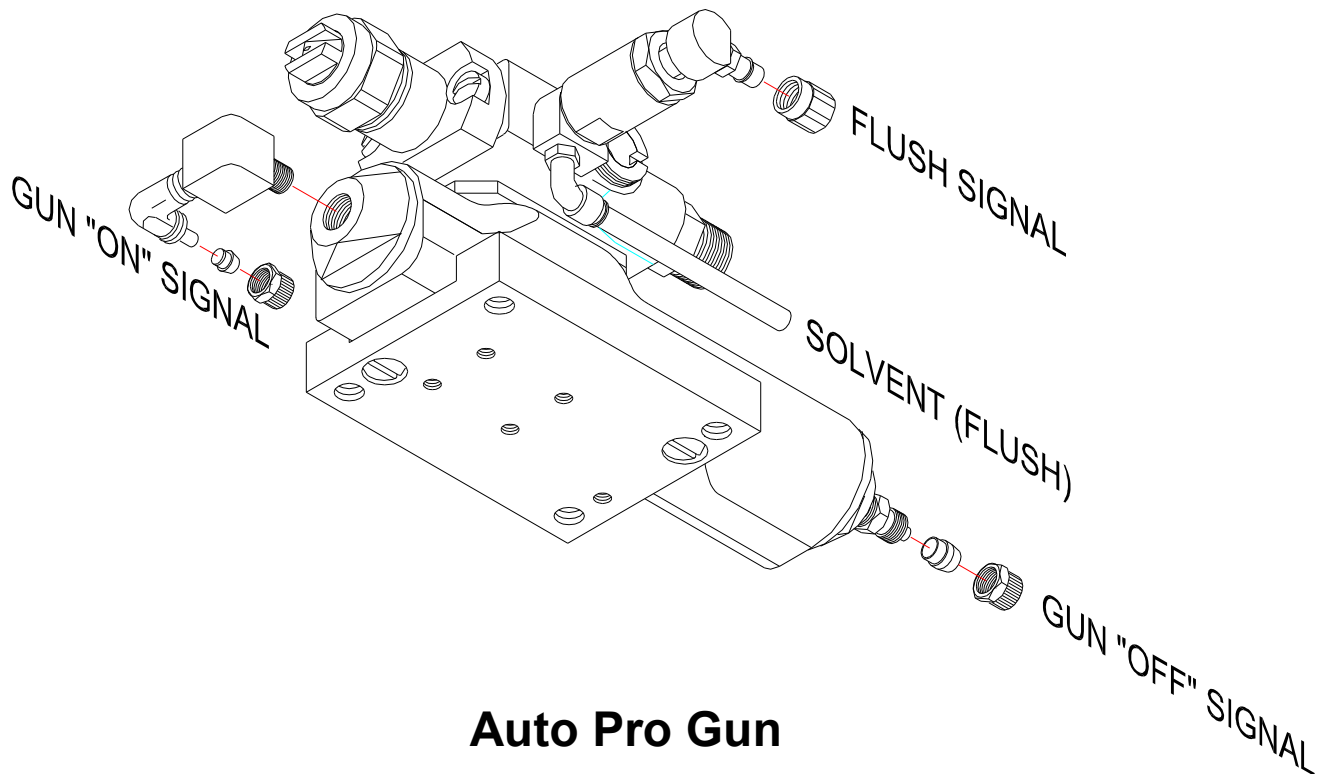
Note: chopper control valve or equivalent is required in addition to the RT-3000.



<u>ITEM</u>	<u>PART NO.</u>	<u>QTY.</u>	<u>DESCRIPTION</u>
1	8407-4-1	1	3-WAY VALVE
2	8407-3-1	1	SHUTTLE VALVE
4	09509	1	3-WAY VALVE

Gun Control:

8. Mark both ends of the poly tube appropriately and put one end through the inner guard and slide the hose clamp onto the tube and then attach it to the #2 barb fitting (Gun "ON" signal). (see diagram above)
9. Attach the other end into the fitting located at the front of the Pro Gun. (see drawing below)
10. Mark both ends of the poly tube appropriately and put one end through the inner guard and slide the hose clamp onto the tube and then attach it to the #4 barb fitting (Gun "OFF" signal). (see diagram above)
11. Attach the other end to the fitting located at the back of the Pro Gun. (see drawing below)

**Auto Pro Gun****Solvent Purge (Flush):**

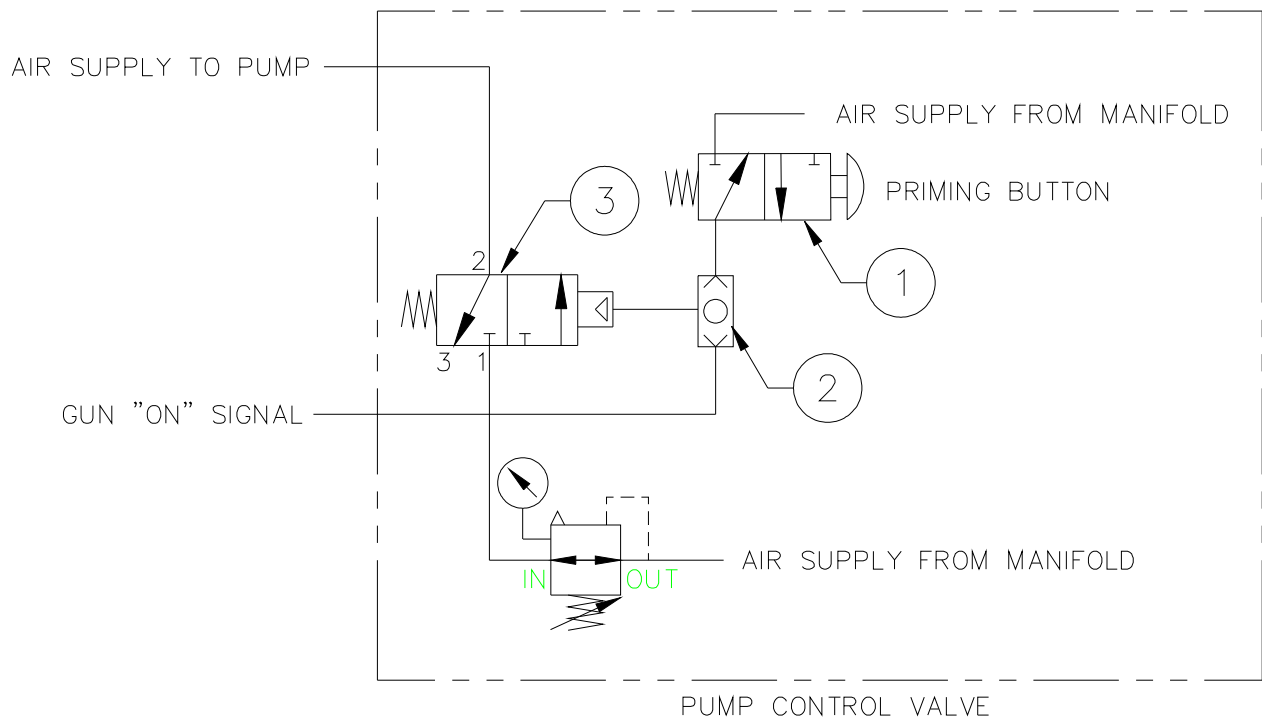
12. Mark both ends of the poly tube appropriately and put one end through the inner guard and slide the hose clamp onto the tube and then attach it to the #3 barb fitting (Solvent Purge). (see diagram above)
13. Push the other end onto the fitting located at the auto flush button on the gun.

Plug Assembly:

14. Install the inner guard into the two halves of the plug shell.
15. Install the four screws holding the outer shell of the plug together.

Optional Valve Package (SV01):

For systems using the SV01 Safety Override valve the gun "on" signal should tee into the pump "on" signal, turning on both the gun and pump.



<u>ITEM</u>	<u>PART NO.</u>	<u>QTY.</u>	<u>DESCRIPTION</u>
1	8407-4-1	1	3-WAY VALVE
2	8407-3-1	1	SHUTTLE VALVE
3	8407-1-1	1	3-WAY VALVE



Start-Up & Shut-Down:

- 1. Installation and Set-Up**
- 2. Per-Start Checklist**
- 3. Start-Up Checklist**
- 4. Daily Start-up Checklist**
- 5. Daily Shut-down Checklist**



Installation & Set-up Checklist

1. Check all clamp brackets, pump column, slave arm bracket, manifold clamp, etc. to make sure they will not move when unit is in operation.
2. Check the mounting of catalyst pump to make sure clevis pins are secure.
3. Make sure exhaust silencer is secured to the power cylinder of the resin pump.

IMPORTANT: Snug up the packing nut at the top of the catalyst pump approximately $\frac{1}{4}$ turn.

4. Snug up, tighten, the resin pump packing by inserting two rods into the holes in the oil cup at the top of the resin pump fluid section. Turn clockwise until packing is snug. **Note: Do not over tighten.**
5. **ProGun:** Tighten the gun valve rod packing nuts until they are very snug. **IMPORTANT: Activate the gun trigger 10 - 15 times then tighten the packing nuts.** Repeat this tightening procedure 3 times to make sure the gun valve rod packing is tight.
6. Attach Suction Wand to Resin Pump.
 - a. Check all fittings on the wand assembly to make sure they are airtight.
 - b. Attach the wand assembly to the foot valve port of the resin pump.
7. Hose connections.
 - a. Connect the black resin hose from the gun to the outlet fitting on the resin filter.
 - b. Connect the catalyst hose from the catalyst pump to the inlet of the catalyst manifold.
 - c. Connect the catalyst hose from the gun to the outlet of the catalyst manifold assembly.
 - d. Attach the red air hose from the gun to the fitting on the regulator labeled gun.
 - e. Attach the yellow poly flush hose from the gun to the outlet fitting of the solvent tank.
 - f. Attach the small red air supply hose from the flush regulator to the input fitting on the solvent tank.
 - g. Attach the large red air hose from the pump regulator to the power cylinder of the resin pump.

Note: Check all hose fittings and fluid connections to make sure they are tight.

 - h. Attach the ground wire from the gun to the electrical grounding lug on the pump mounting bracket.

Note: Check electrical ground to ensure it is installed from the pump mounting bracket to an earth ground.

 - i. Remove the catalyst poly tubes from the component box.
 - j. Cut the $\frac{1}{2}$ inch diameter poly line, with the clamps, to 26 inches long. Clamp one end to the outlet of the catalyst jug and the other end to the inlet of the catalyst pump. Make sure clamps are airtight.
 - k. Connect the $\frac{1}{4}$ -inch poly line to the relief valve on the catalyst manifold assembly and insert the other end into the hole in the top of the catalyst jug.
 - l. Connect the $\frac{1}{4}$ -inch poly line to the catalyst recirculation valve on the catalyst manifold, and insert the other end into the hole in the top of the catalyst jug.
9. Check all components for damage.

Pre-Start Checklist

ACTIVITIES MUST BE DONE IN THE SEQUENCE SHOWN, AND MUST BE CHECKED OFF AS COMPLETED. USE THIS CHECKLIST IN CONJUNCTION WITH THE OPERATING MANUAL FOR THE ULTRAMAX UNIT.

ACTIVITY

Priority: Put on Respirator as specified for spray painting, Protective Clothing, Eye Protection, and PVC Gloves

- 1 Tools and materials are available for pre-start checks.
- 2 Incoming airline is ½ inch.
- 3 Incoming airline is connected to the inlet manifold.
- 4 Earth straps are connected to the resin drum and to earth.
- 5 Incoming air valve is in the OPEN position.
- 6 Air supply is ON.
- 7 At the Manifold, open the air supply to the gun.
- 8 Seat the catalyst and resin seals on the Pro Gun.
- 9 Compress the resin pump packing.
- 10 Check for oil in the pump reservoir.
- 11 Adjust the Catalyst Pump Packing Nut.
- 12 Check that there is Catalyst in the Catalyst Bottle.
- 13 Check that the Catalyst Bottle Cap is in place.
- 14 Place the Resin Pick-up wand in the resin supply container.
- 15 Place the end of the Resin Return Hose in the resin container.
- 16 Fill the Solvent Flush Tank.
- 17 At the Manifold, turn the Air Pressure on to the Solvent Flush Tank (50 – 60psi)
- 18 Flush the mix chamber on the Pro Gun.
- 19 Remove air from the Catalyst feed line to the Catalyst Pump.
- 20 Close the ball valve below the Surge Chamber.

THE UNIT IS NOW READY TO BE STARTED UP.

ABNORMAL CONDITIONS OBSERVED AND CORRECTED

Abnormal Condition	✓ when corrected

OPERATORS NAME: _____ **DATE:** _____

SIGN OFF WHEN START UP CHECKS ARE COMPLETED: _____

Start-Up Checklist

ACTIVITIES MUST BE DONE IN THE SEQUENCE SHOWN, AND SHOULD BE CHECKED OFF AS COMPLETED. USE THIS CHECKLIST IN CONJUNCTION WITH THE OPERATING MANUAL FOR THE ULTRAMAX UNIT.

Priority: Put on Respirator as specified for spray painting, Protective Clothing, Eye Protection, and PVC Gloves

1. With nozzle and mixer removed lock the Gun trigger in the Open position over an open container.
2. Open recirculation valve on Catalyst Manifold
3. Remove the Pivot Pin from the Slave Arm.
4. Manually pump the catalyst pump with the slave arm drive, observe catalyst returning to the catalyst jug.
5. Close recirculation valve on Catalyst Manifold.
6. Again manually pump the catalyst pump with the slave arm drive, observe for catalyst exiting the mix chamber on the gun. Leave the pivot pin out.
7. Open the ball valve below the surge chamber. Make sure the resin return hose is in the resin container or another open container.
8. Using the regulator on the manifold, slowly turn up the pump air pressure until the pump moves slowly and evenly.
9. Slowly turn up the air to the pump until an air free stream of resin exits the resin return hose.
10. Then turn the pump air down to zero again.
11. Close the ball valve below the surge chamber.
12. Again turn up the air to the resin pump until an air free stream of resin exits the mix chamber on the gun.
13. Turn the air to the pump down to zero.
14. Disengage the gun trigger; leave it in the CLOSED position.
15. Flush the mix chamber on the gun with acetone
16. Slowly turn up the pump pressure to 50psi.
17. Hand prime the catalyst pump with the slave arm drive until the pressure rises on the catalyst pump pressure gauge.
18. Replace the Pivot Pin in the catalyst slide drive, lock it in.
19. Adjust the catalyst percentage as required.
20. Insert the Distribution Ring into the Mix Chamber locating rim.
21. Place mix housing Seal into the Mix Chamber locating rim.
22. Insert the Catalyst Injector and injector seal into the aperture in the Distribution Ring. The spring goes into the gun block.
23. Place Mix Chamber and Catalyst Injector onto the front of the Pro Gun, secure it with 2 screws.
24. Flush the Assembled mix chamber with solvent.

THE UNIT IS NOW READY TO BE SET UP FOR SPRAY

ABNORMAL CONDITIONS OBSERVED AND CORRECTED

Abnormal Condition	✓ when corrected

OPERATORS NAME: _____ **DATE:** _____

SIGN OFF WHEN START UP CHECKS ARE COMPLETED: _____

Daily Start-Up Checklist

ACTIVITIES MUST BE DONE IN THE SEQUENCE SHOWN, AND MUST BE CHECKED OFF AS COMPLETED. USE THIS CHECKLIST IN CONJUNCTION WITH THE OPERATING MANUAL FOR THE ULTRAMAX UNIT. THIS SEQUENCE FOLLOWS ON FROM START- UP CHECKLIST

ACTIVITY NO. CHECK WHEN COMPLETED

Put on Respirator as specified for spray painting, Protective Clothing, Eye Protection, and PVC Gloves

- 1 Check all hoses for damage.
- 2 Check all material supplies and fill or replace as needed.
- 3 Open main inlet air valve on the manifold.
- 4 Open recirculation valve on Catalyst Manifold.
- 5 Close resin dump valve on the bottom of the resin filter.
- 6 Check pump air regulator and gauge if needed use the regulator on the manifold, slowly turn up the pump air pressure to the operating pressure, 30 – 50psi. If a safety over ride valve is installed press and hold the priming button while adjusting air pressure.
- 7 Remove the Pivot Pin from the UPS catalyst pump drive.
- 8 Manually pump the catalyst pump with the UPS drive, observe catalyst returning to the catalyst jug, pump until the stream is air free.
- 9 Close recirculation valve on Catalyst Manifold.
- 10 Manually pump the catalyst pump with the UPS drive, bring catalyst pressure to operating pressure 100 – 200 psi.
- 11 Replace the Pivot Pin into the UPS catalyst pump drive.
- 12 Adjust the catalyst percentage as required.
- 13 Insert the Distribution Ring into the Mix Chamber locating rim.
- 14 Place mix housing Seal into the Mix Chamber locating rim.
- 15 Insert the Catalyst Injector and injector seal into the aperture in the Distribution Ring. The spring goes into the gun block.
- 16 Place Mix Chamber and Catalyst Injector onto the front of the Pro Gun, secure it with 2 screw
- 17 Flush the Assembled mix chamber with solvent.
- 18 Install mixer and nozzle onto the mix chamber.

THE UNIT IS NOW READY TO BE SET UP FOR SPRAY

ABNORMAL CONDITIONS OBSERVED AND CORRECTED

Abnormal Condition	✓ when corrected

OPERATORS NAME: _____ **DATE:** _____

SIGN OFF WHEN START UP CHECKS ARE COMPLETED : _____

Daily Shut-Down Checklist

ACTIVITIES MUST BE DONE IN THE SEQUENCE SHOWN, AND MUST BE CHECKED OFF AS COMPLETED. USE THIS CHECKLIST IN CONJUNCTION WITH THE OPERATING MANUAL FOR THE ULTRAMAX UNIT.

Priority: Put on Respirator as specified for spray painting, Protective Clothing, Eye Protection, and PVC Gloves

- 1 Flush the gun with solvent.
- 2 Wipe the face of the nozzle after flushing.
- 3 Turn off the main inlet air ball valve at the manifold.
- 4 Release the solvent flush tank pressure.
- 5 Remove the nozzle and clean it.
- 6 Remove the Mix Housing and clean it.
- 7 Wipe the gun block face with a clean rag.
- 8 Hang the gun with the gun block exit holes facing down.
- 9 Open the catalyst recirculation valve on the catalyst manifold
- 10 Open the resin dump valve located on the bottom of the resin filter.

THE UNIT IS NOW READY.

ABNORMAL CONDITIONS OBSERVED AND CORRECTED

Abnormal Condition	✓ when corrected

OPERATORS NAME: _____ **DATE:** _____

SIGN OFF WHEN START UP CHECKS ARE COMPLETED: _____

Start-Up Checklist for FIT Chop

ACTIVITIES MUST BE DONE IN THE SEQUENCE SHOWN, AND MUST BE TICKED OFF AS COMPLETED. USE THIS CHECKLIST IN CONJUNCTION WITH THE OPERATING MANUAL FOR THE ULTRAMAX UNIT. THIS SEQUENCE FOLLOWS ON FROM CHECKLIST 02 – START UP CHECKLIST

ACTIVITY NO.		TICK WHEN COMPLETED
Priority	Put on Respirator as specified for spray painting, Protective Clothing, Eye Protection, and PVC Gloves	
1	Apply Red grease to the Mix Housing Threads.	
2	Insert the Turbulent Mixer into the Stainless Steel Mix Housing Chamber. It must have a tight fit. (2,25 kg or less per minute, use Critical Turbulent Mixer, for more than 2,25kg per minute, use Standard Turbulent Mixer.)	
3	Install the FIT spray tip and nozzle cap onto the Mix Chamber (do not overtighten)	
4	Spray a test pattern onto a wide paper test strip. Observe the pattern. <ul style="list-style-type: none"> ◆ Too wide with poorly defined “horns” – turn down the pump pressure ◆ Too narrow but with well defined “horns” – turn up the pump pressure. ◆ Good width with well defined “horns” – optimised for low emission spraying. Use pump pressure to adjust to a pattern that has uniformity in gaps between streams, and no streaking	
5	Flush the Mix Chamber with solvent	
6	Turn Resin Pump regulator to Zero.	
The Unit is now set up for Spray Trials.		

ABNORMAL CONDITIONS OBSERVED AND CORRECTED

Abnormal Condition	✓ when corrected

OPERATORS NAME _____ DATE: _____

SIGN OFF WHEN SET UP CHECKS ARE COMPLETED: _____

Note: Before spraying a part always check that the catalyst recirculation valve is closed and catalyst pump is primed.



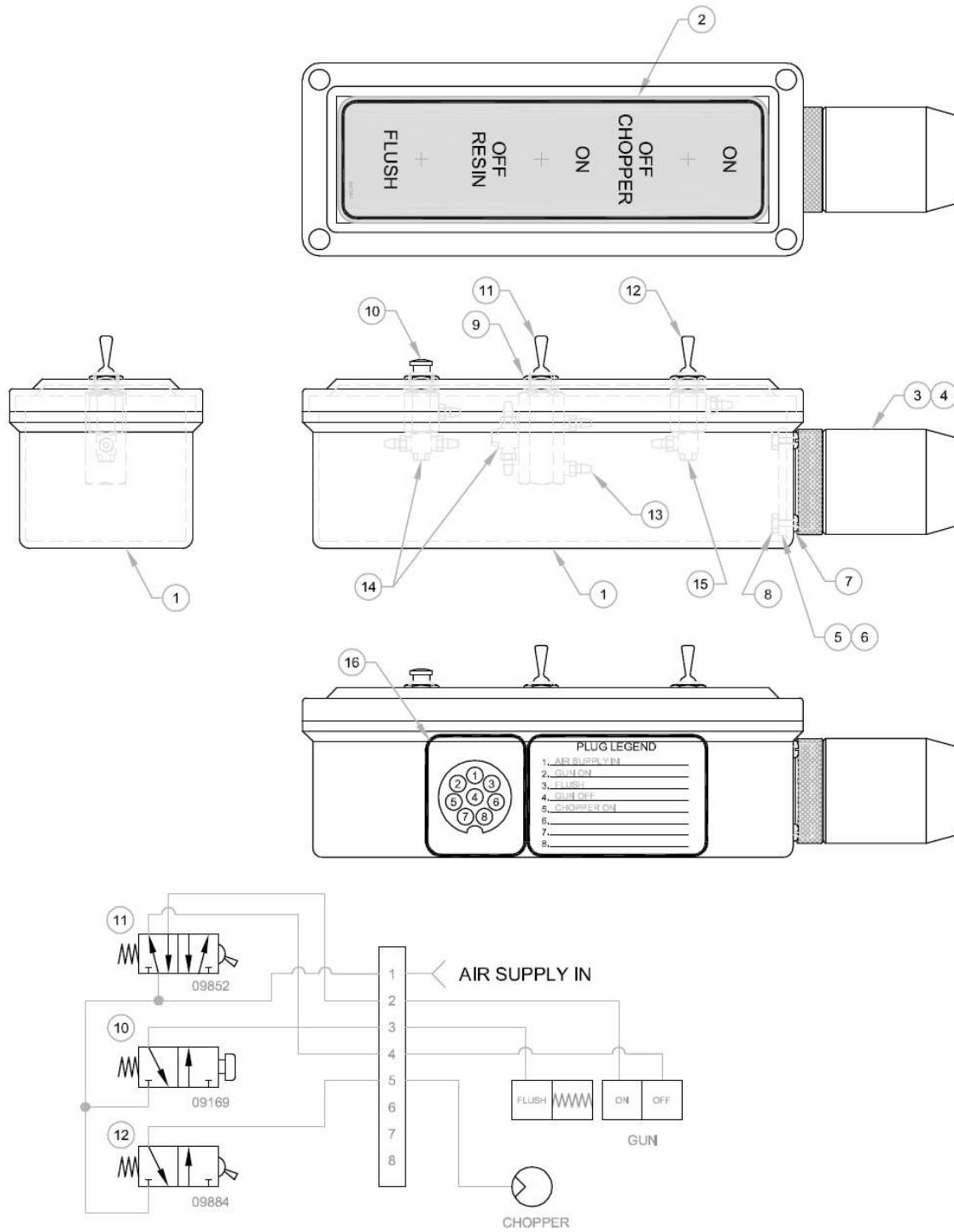
Parts Drawings:

RT-3000

PRO GUN CHOP TRIGGER

SV01

SAFETY OVERRIDE VALVE



MAGNUM VENUS PLASTECH

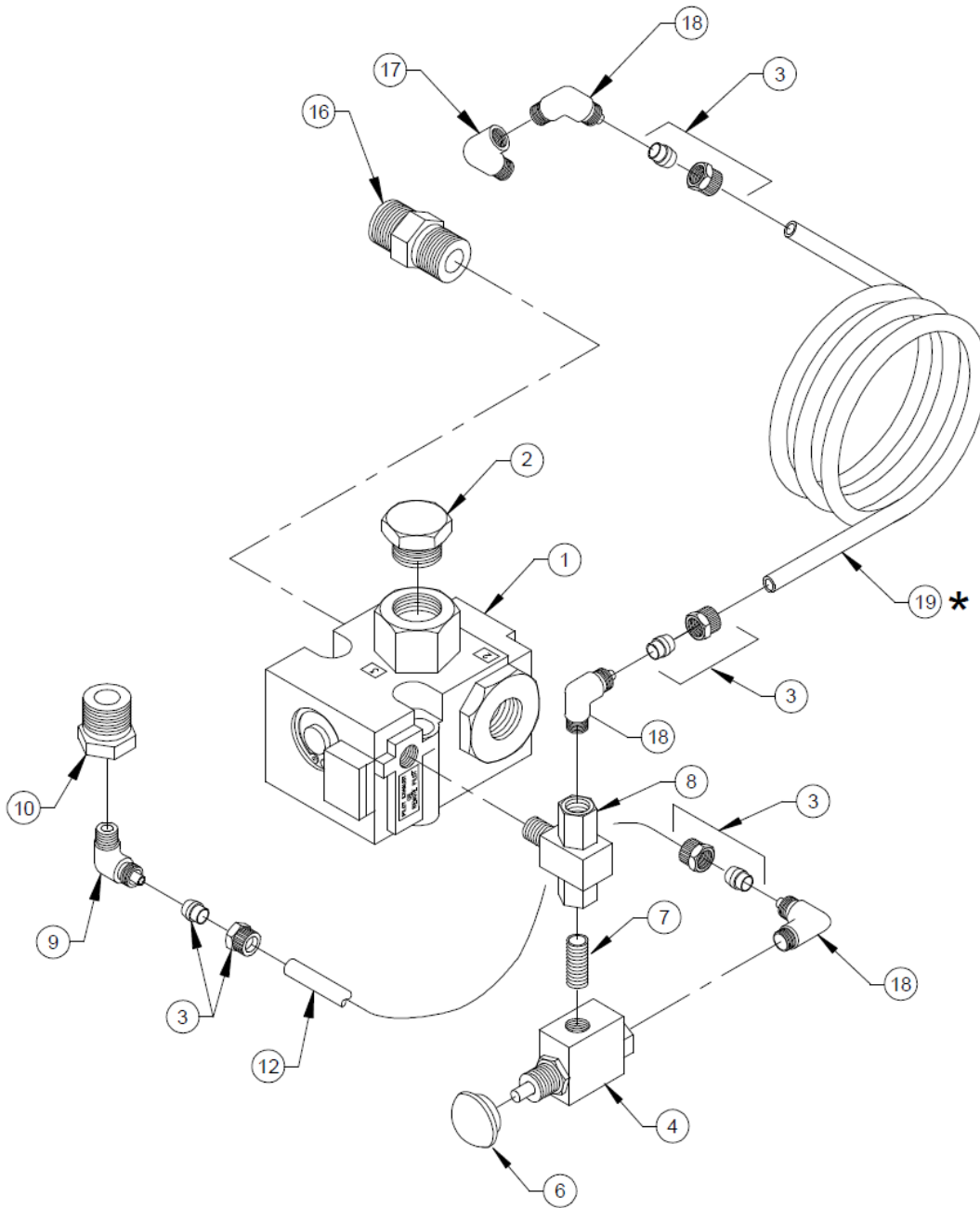
REMOTE TRIGGER CONTROL BOX

RT-3000

REV. A - REVISED PARTS LIST PER B/M 08/29/07 JEM
 REV. B - DELETED ITEM 17 AND 18 07/20/09 BT2
 REV. C - ADJUSTED DESIGNATIONS ON PLUG LEGEND 03/07/11 BT2
 REV. D - UPDATED DRAWING TO SHOW NEW ENCLOSURE, ITEM 20 WAS .5 FT 03/14/11 BT2

Remote Trigger Control Box RT-3000 PARTS LIST

ITEM	PART NO.	QTY	DESCRIPTION
1	58723-1	1	ENCLOSURE
2	58724-1-DECAL	1	DECAL
3	07642	1	MULTI-PLUG
4	07644	5	TERMINAL PLUG
5	07643	1	MULTI-SOCKET
6	07645	5	TERMINAL SOCKET
7	02804-4	4	PAN HEAD SLOTTED SCREW
8	01708	4	KEP NUT
9	00300	3	TRIM NUT
10	09169	1	3-WAY VALVE
11	09852	1	4-WAY TOGGLE VALVE
12	09884	1	3-WAY VALVE TOGGLE VALVE
13	7701-6-7	9	BARBED FITTING
14	08807	2	ADJUSTABLE TEE
15	TRU-1021	1	FITTING
16	95085-5	1	PNEUMATIC PLUG DECAL
19	MS-2052-1	60 FT	TUBING (NOT SHOWN)
20	09073	4 FT	URETHANE TUBING (NOT SHOWN)



MAGNUM VENUS PRODUCTS

Air Supply Valve Override Assy	SV-01
--------------------------------	-------

REV. 02/19/04, BT2
A ITEM 16 WAS 7701-3-7 04/15/04 JEM

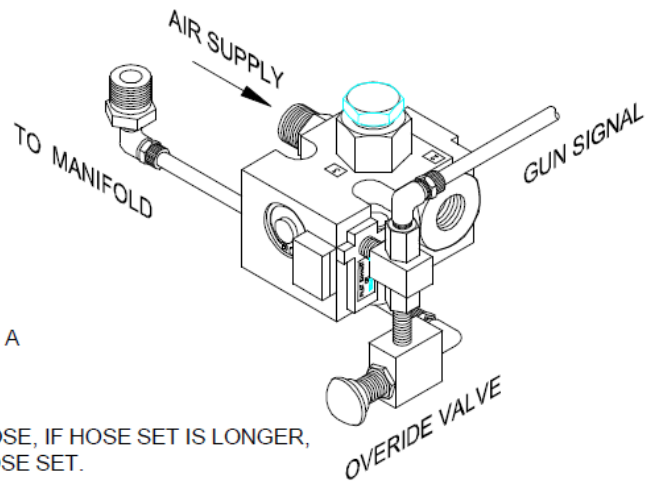
Air Supply Valve Override Assy SV-01
PARTS LIST

ITEM	PART NO.	QTY	DESCRIPTION
1	8407-1-1	1	AIR PILOT 3-WAY VALVE
2	PF-HP-12	1	PIPE PLUG
4	8407-4-1	1	3-WAY VALVE
6	8407-5-1	1	PUSH BUTTON
7	7701-3-17	1	NIPPLE FITTING
8	8407-3-1	1	1/8 NPT BRANCH TEE SHUTTLE VALVE
9	7701-6-2	1	POLY ELBOW FITTING
10	PF-RB-08-04	1	BUSHING FITTING
12	01444	1'	1/4" POLY TUBING - GREEN
16	7701-3-7	1	COUPLING FITTING
17	7701-1-8	1	ELBOW FITTING
18	MPH-2534	3	POLY ELBOW FITTING
19	01444	30'	1/4" POLY TUBING - GREEN (30' LENGTH)
#	00276	1	TEE (NOT SHOWN)
#	7701-6-4	1	POLY FITTING (NOT SHOWN)

Optional Parts and Assemblies

ITEM	PART NO.	QTY	DESCRIPTION
3	7701-6-11	3	POLY-FLOW FERRULE W/ NUT

FIGURE 1-1



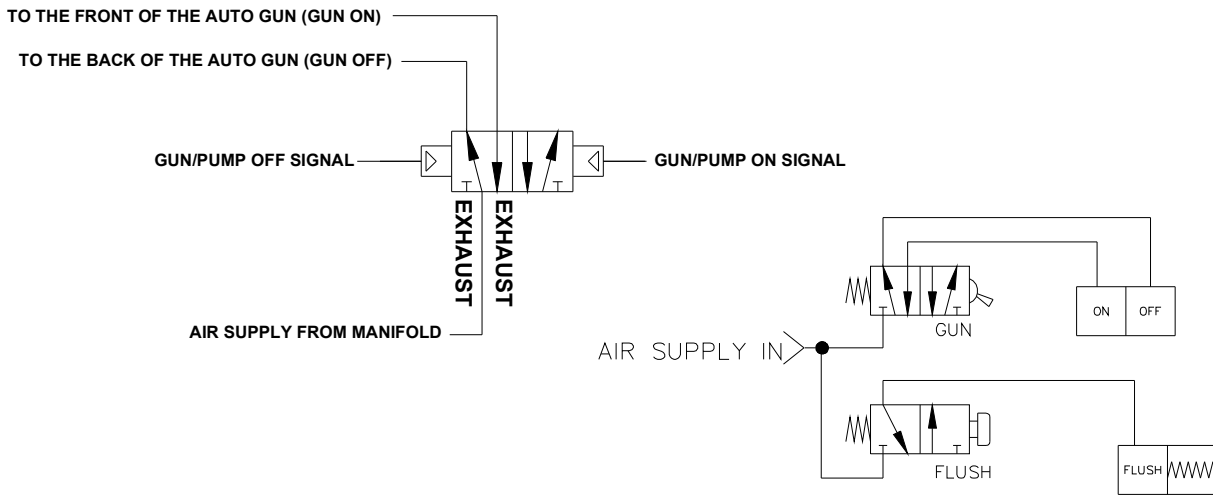
REPLACES ITEM 17 WHEN USING A CIPHER, "80", OR MAXIMUS GUN.

* THIS ASSY COMES STD W/ 30' HOSE, IF HOSE SET IS LONGER, ORDER # 01444 X LENGTH OF HOSE SET.

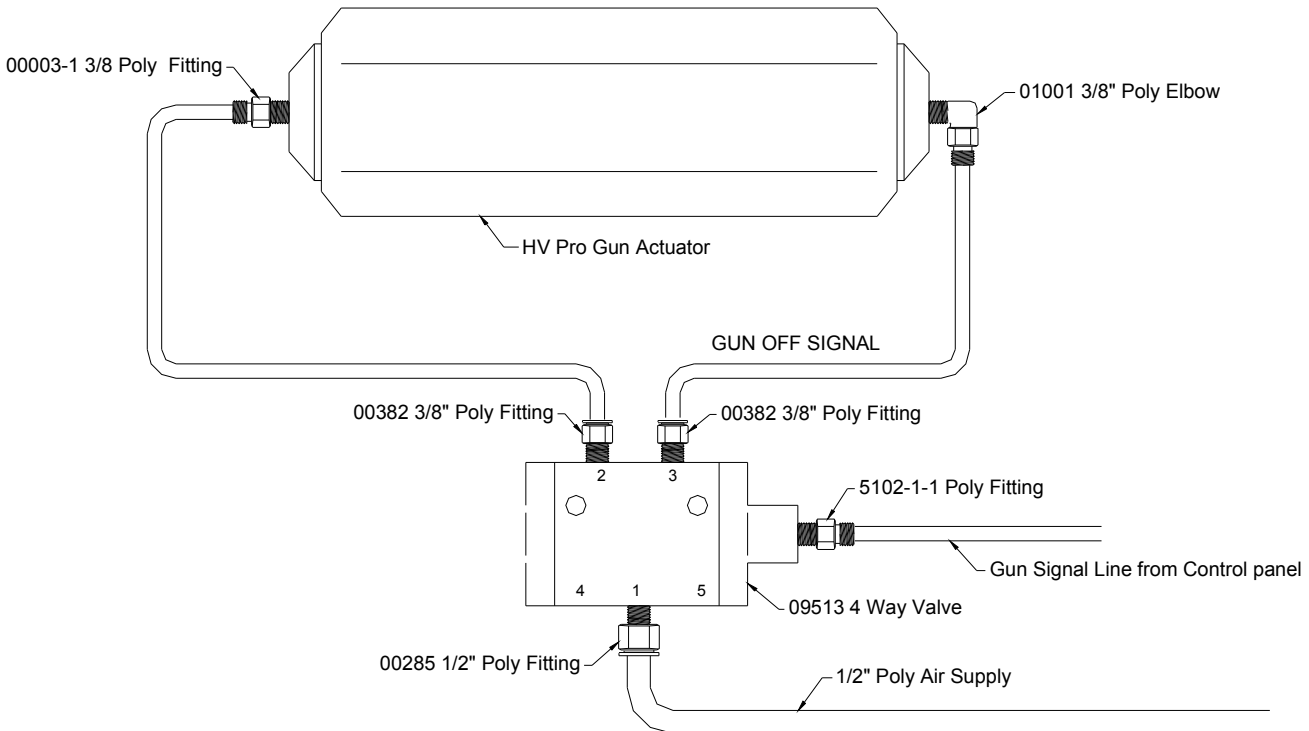


HV Pro Gun Options:

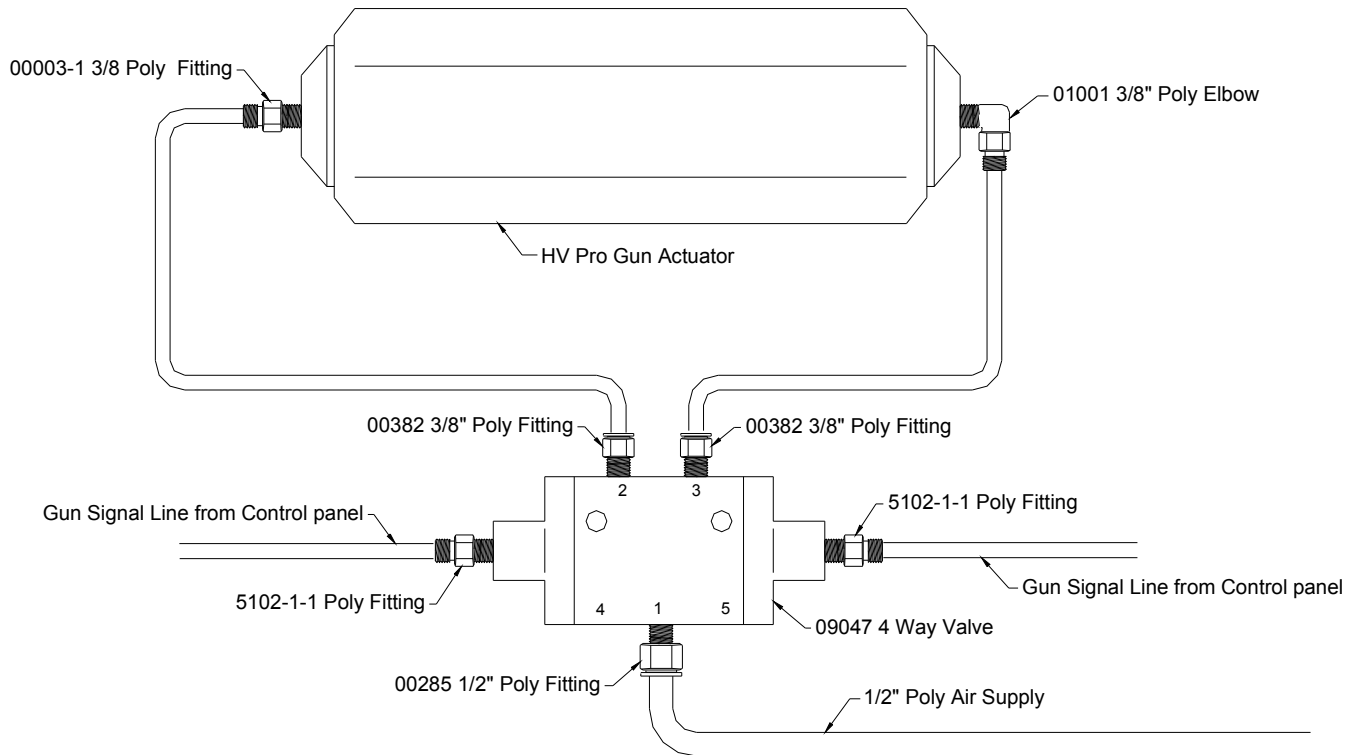
Below are a couple of valve options for controlling the HV Gun block. The HV Pro gun Actuator may open and close slowly when using the standard remote trigger packages so it is recommended to use a larger piloted valve to supply the gun and chopper but control them using the remote trigger package.



HV Gun controls using 4way spring return valve and 3/8 fittings.

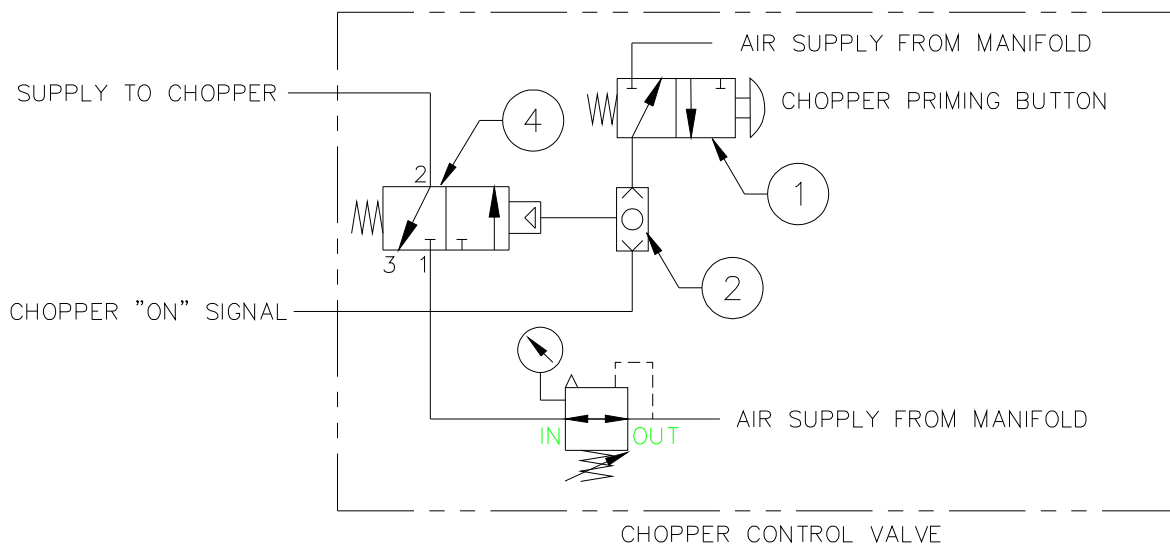


HV Gun controls using 4way dual piloted valve and 3/8 fittings.



Note: chopper control valve or equivalent as shown below is required in addition to the Remote Trigger package (like the RT-3000).

<u>ITEM</u>	<u>PART NO.</u>	<u>QTY.</u>	<u>DESCRIPTION</u>
1	8407-4-1	1	3-WAY VALVE
2	8407-3-1	1	SHUTTLE VALVE
4	09509	1	3-WAY VALVE





Revision Information:

- Rev. 03/2011** Added this revision information chapter. Updated drawing section with current drawing, removed the gun and chopper drawings. The HV Pro gun Options chapter was included in this manual.
- Rev. 12/2012** Updated the manual format, address and added the Terms and Conditions section.





**Magnum™
Venus
Plastech**

MAGNUM VENUS PLASTECH

CORPORATE HEADQUARTERS and MANUFACTURING
11692 56th Court * Clearwater, FL 33760 * Tel 727-573-2955 * Fax 727-571-3636

TECHNOLOGY CENTER and MANUFACTURING
1862 Ives Ave. * Kent, WA 98032 * Tel 253-854-2660 * Fax 253-854-1666

MVP Plastech UK
Chilsworthy Beam, Gunnislake, Cornwall, PL18 9AT UK, * Tel: +44 (0) 1822 832621
Fax: +44 (0) 1822 833999

www.mvpind.com