

dynadock™  
User's Manual

Contents

Introduction ..... 7

    Features .....7

    Front panel .....8

    Back panel .....9

    Package contents ..... 10

    System Requirements ..... 10

Assembly..... 11

Installation ..... 12

    Installing the Drivers ..... 12

    Connecting the dynadock™ to the Computer .....20

Uninstalling ..... 22

Using the dynadock™ ..... 26

    USB 2.0 Ports (Front and Back Panel) .....26

    Ethernet Port (Back Panel)..... 27

    Serial Port (Back Panel) .....28

    Front Panel Audio Port (Microphone) ..... 28

    Front Panel Audio Port (Headphones or Speakers) ..... 28

    Video Port (VGA or DVI)..... 35

    How Standby/Sleep or Hibernate Mode Affects Devices Attached  
    to the dynadock™ ..... 43

Disconnecting the dynadock™ ..... 43

    Eject Dock ..... 43

    Eject Dock and Sleep .....44

    Eject by use of command line ..... 45

    Changing the dynadock Utility Settings .....46

    Select Audio Device .....49

Specifications ..... 50

## Regulatory Compliance

### FCC Information

Product Name: *dynadock™*

Model number: *PA3541\**, *PA3542\**

#### FCC notice "Declaration of Conformity Information"

This equipment has been tested and found to comply with the limits for a Class B digital device, pursuant to part 15 of the FCC rules. These limits are designed to provide reasonable protection against harmful interference in a residential installation. This equipment generates, uses and can radiate radio frequency energy and, if not installed and used in accordance with the instructions, may cause harmful interference to radio communications. However, there is no guarantee that interference will not occur in a particular installation. If this equipment does cause harmful interference to radio or television reception, which can be determined by turning the equipment off and on, the user is encouraged to try to correct the interference by one or more of the following measures:

- Reorient or relocate the receiving antenna.
- Increase the separation between the equipment and receiver.
- Connect the equipment into an outlet on a circuit different from that to which the receiver is connected.
- Consult the dealer or an experienced radio/TV technician for help.

**WARNING:** Changes or modifications made to this equipment, not expressly approved by TOSHIBA or parties authorized by TOSHIBA could void the user's authority to operate the equipment.

#### FCC Conditions

This equipment has been tested and found to comply with Part 15 of the FCC Rules. Operation is subject to the following two conditions:

- (1) This device may not cause harmful interference
- (2) This device must accept any interference received. Including interference that may cause undesired operation.

## Contact

**Address:** TOSHIBA America Information Systems,  
Inc.  
9740 Irvine Boulevard  
Irvine, California 92618-1697

**Telephone:** (949) 583-3000

## EU Declaration of Conformity

TOSHIBA declares, this product conforms to the following Standards:

**Supplementary Information:** “This product complies with the requirements of the EMC Directive 89/336/EEC and/or the Low Voltage Directive 73/23/EEC.”

This product is carrying the CE-Mark in accordance with the related European Directives. The party responsible for CE-Marking is TOSHIBA Europe GmbH, Hammfelddamm 8, 41460 Neuss, Germany.

## WEEE Information

For EU (European Union) member users: According to the WEEE (Waste electrical and electronic equipment) Directive, do not dispose of this product as household waste or commercial waste. Waste electrical and electronic equipment should be appropriately collected and recycled as required by practices established for your country. For information on recycling of this product, please contact your local authorities, your household waste disposal service or the shop where you purchased the product.



## Safety Instructions

Always read the safety instructions carefully:

- ❖ Keep this User's Manual for future reference
- ❖ Keep this equipment away from humidity
- ❖ If any of the following situations arise, get the equipment checked by a service technician:
  - ❖ The equipment has been exposed to moisture.
  - ❖ The equipment has been dropped and damaged.
  - ❖ The equipment has obvious sign of breakage.
  - ❖ The equipment has not been working well or you cannot get it to work according to the User's Manual.

## Copyright Statement

No part of this publication may be reproduced in any form by any means without the prior written permission. Other trademarks or brand names mentioned herein are trademarks or registered trademarks of their respective companies.

## Disclaimer

Information in this document is subject to change without notice. The manufacturer does not make any representations or warranties (implied or otherwise) regarding the accuracy and completeness of this document and shall in no event be liable for any loss of profit or any commercial damage, including but not limited to special, incidental, consequential, or other damage.

December 2007, Rev4.0

## Trademarks

Intel, Intel Core, Pentium and Celeron are trademarks or registered trademarks of Intel Corporation.

Microsoft, Microsoft Office, Windows and Windows Vista are either registered trademarks or trademarks of Microsoft Corporation in the United States and/or other countries.

AMD, AMD K6, Athlon and Duron are registered trademarks or trademarks of Advanced Micro Devices Incorporated.

Ethernet is a registered trademark and Fast Ethernet is a trademark of Xerox Corporation.

Adobe and Reader are either registered trademarks or trademarks of Adobe Systems Incorporated in the United States and/or other countries.

Other brands and product names are trademarks or registered trademarks of their respective companies.

## Precautions for Microsoft® Windows® 2000, Microsoft® Windows® XP, Microsoft® Windows Vista®

The Fn + F5 functionality detailed in the electronic User's Guide for your TOSHIBA computer only controls the internal video controller of your computer.

The TOSHIBA dynadock utilizes an advanced video graphics controller to display the video on the external monitor connected to it. However, due to USB 2.0 transfer speed limitations, some or all portions of DVD playback may appear slow or choppy. This is not a malfunction of the dynadock. Move the video playback from the external monitor to your computer display for optimal video performance when viewing DVDs.

DVD Playback is not supported in mirror mode.

The 3D screensavers (i.e. 3D FlowerBox, 3D Pipes and 3D Text) are not supported in either mirror or extended mode.

This product does not support 3D programs.

Unable to enter full screen DOS mode in the mirror mode.

Google Earth does not work in the mirror mode.

Internal speakers are disabled when the dynadock is connected. See Select Audio Device section for further information.

Depending on your computer system, you may receive a warning message if the external monitor connected to your dynadock is used as your primary display.

## Precautions for Windows Vista® only

Software application programs that utilize OpenGL architecture, such as 3D animation, CAD, visual simulation, will not be supported in mirror mode. If you use these applications, we suggest you disconnect the dynadock.

USB, CPU resources and other devices may be affected when playing movies or transferring large amounts of data via the dynadock.

The sound may be distorted or delayed when you play MIDI/MPG files. If it's a MIDI file, please change your media player visualization settings. If it's a MPG file, we suggest you play it without connecting the dynadock.

The Fn + F5 functionality detailed in the electronic User's Guide for your TOSHIBA computer may not work occasionally.

The Windows Transient Multi-Monitor Manager will be disabled when the dynadock is connected.

Software application programs that utilize certain directdraw commands such as some kinds of 2D-Games, the fullscreen display on the external monitor connected to the dynadock will not be supported. If you want to play these kinds of games in fullscreen, we suggest you disconnect the dynadock.

DVD may not play correctly when using Media Center Edition or TOSHIBA DVD player on the external monitor connected to the dynadock.

Your desktop background may not be displayed when you reboot or resume your computer from Hibernation mode.

---

## Introduction

Thank you for purchasing the Toshiba dynadock, the universal docking station that enables you to connect your deskspace peripherals through one USB cable to just about any Windows-based notebook. The dynadock is software upgradable to enable you to keep your dynadock in line with technological advances. Visit [dynadock.com](http://dynadock.com) for the latest software driver support updates.

---

### NOTE

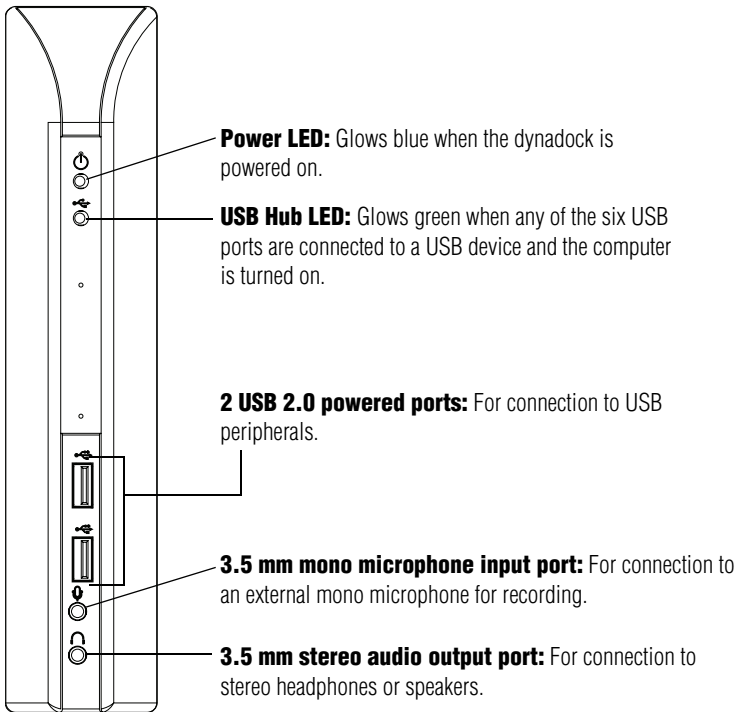
This user manual contains information for the two versions of dynadock, with either a VGA video port or DVI video port. It also contains installation instructions for both Microsoft® Windows® XP and Microsoft® Windows Vista® operating systems. Please pay attention to and follow the instructions for the dynadock version you have and the operating system on your computer.

---

## Features

- ❖ Single USB cable connection to your computer
- ❖ Upright slim design saves desktop space
- ❖ Easily accessible ports located on the front
- ❖ Supports VGA resolution up to 1280 x 1040 and DVI resolution up to 1600 x 1200 (16/32-bit color) video on external monitor
- ❖ Hot swappable; you can add or remove most devices without rebooting the computer
- ❖ Virtual 7.1 channel surround sound
- ❖ Includes all video and audio drivers to get you started. Please visit [www.dynadock.com](http://www.dynadock.com) for the latest software driver updates
- ❖ Includes TOSHIBA dynadock Utility to customize dynadock settings
- ❖ Charge your USB peripherals with the front powered USB ports

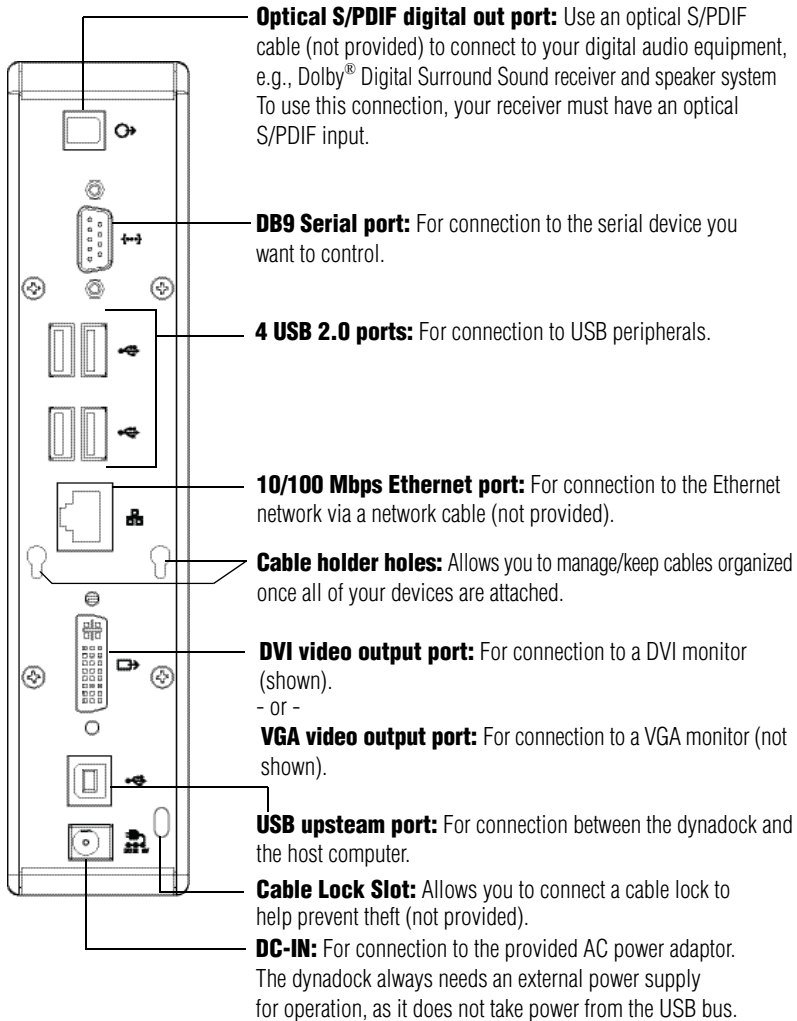
## Front panel



*(Sample Illustration) Indicators and connectors on the front of the dynadock*



## Back panel



*(Sample Illustration) Connections on the back of the dynadock*

## Package contents

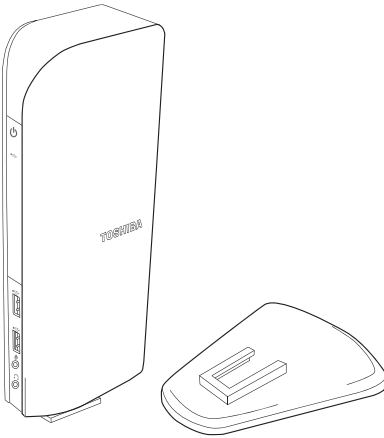
- ❖ dynadock™ (VGA or DVI video interface)
- ❖ Base plate
- ❖ Cable Holder
- ❖ USB 2.0 Cable
- ❖ AC Power Adaptor
- ❖ AC Power Cord/cable
- ❖ CD (User's Manual, Drivers and Utilities)
- ❖ Quick Installation Guide
- ❖ DVI to VGA video adapter (DVI version only)

## System Requirements

- ❖ 1.2GHz or higher processor. Intel® Pentium®/Celeron® family, or AMD K6®/AMD Athlon™/AMD Duron™ family, or compatible processor recommended (Intel® Core™ 2 Duo 2.0 GB or higher processor recommended for optimal video performance)
- ❖ 512 MB memory or higher (1 GB memory or higher recommended)
- ❖ USB 2.0 port
- ❖ 30 MB of available disk space
- ❖ Microsoft® Windows® 2000, Microsoft® Windows® XP with SP2 and Microsoft® Windows Vista® (32-bit edition)

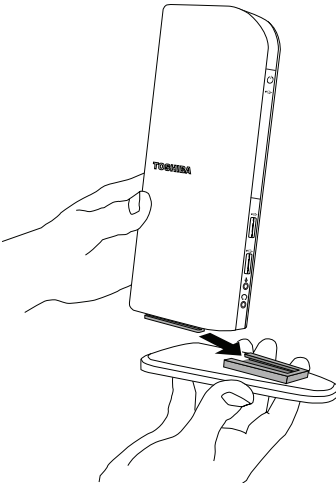
## Assembly

Remove the base and dynadock from the packaging. You will need to assemble the two pieces.



*(Sample Illustration) The dynadock and base before assembly*

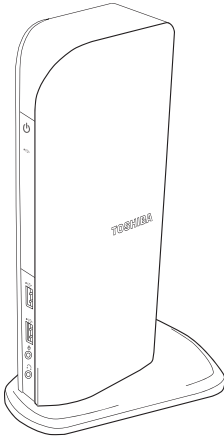
Slide the dynadock onto the base as shown below.



*(Sample Illustration) Assembling the dynadock and base*

---

When assembled, the dynadock is a self-standing, easy to place unit.



*(Sample Illustration) The assembled dynadock™*

## Installation

### Installing the Drivers

---

#### NOTE

The following installation steps are for both Windows Vista® and Windows® XP operating systems. Although most steps are similar, there are some differences between the two operating systems so please follow the steps for your operating system where indicated.

- 
- 1 Insert the provided Installation CD into your optical disc drive. It will run automatically and the dialog box will appear.

If the auto-run function is disabled on your system, the program will fail to load automatically. Please open the disk in Windows® Explorer, and double click "AutoRun.exe".

---

#### NOTE

You may need to temporarily disable spyware or anti-virus programs while installing the drivers.

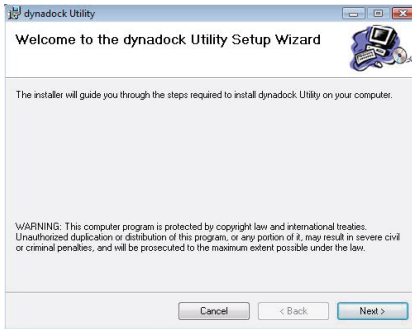
---



*(Sample Image) Initial Screen*

- 2 Click on “Install dynadock Utility & Driver”, the program will begin installing the dynadock Utility and all drivers necessary for the dynadock device. Follow the on-screen directions to finish the utility installation.

Step 1: When the welcome screen appears, click **Next**.



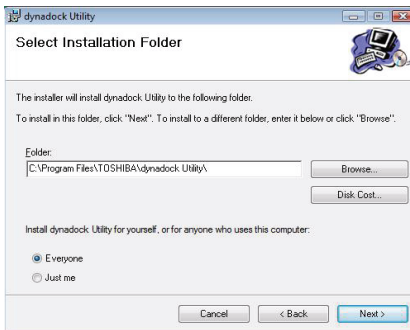
*(Sample Image) Welcome screen*

## NOTE

During the installation, there will be various screens opening and closing and the display may flicker during this time. This is normal. This process may take several minutes to complete.

**Step 2: Select “I Agree” then click Next**

*(Sample Image) License Agreement screen*

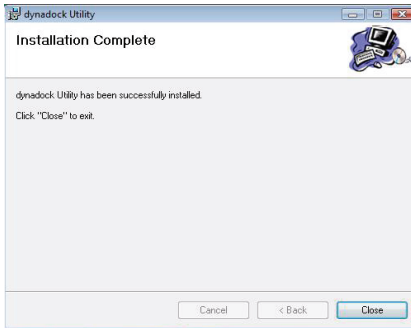
**Step 3: Choose the destination folder.**

*(Sample Image) Choose Destination Location screen*

**Step 4: Click Next to start the installation. .**

*(Sample Image) Ready to Install screen*

Step 5: Click **Close** when the “Installation Complete” dialog box shown below appears.



*(Sample Image) Finish screen*

**NOTE** There are slight differences in the installation between Windows Vista® and Windows® XP. Please follow the steps for your operating system.

### Windows Vista® Operations:

- 3 After the utility installation is completed, the “Video” driver will be installed automatically.

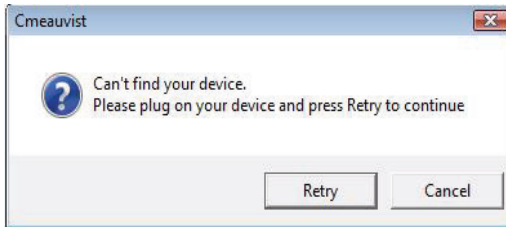
Step 1: Select the language of End User License Agreement and click **I Accept**.

**NOTE** During the installation, there will be various screens opening and closing and the display may flicker during this time. This is normal. This process may take several minutes to complete.

**NOTE**

Please wait until the progress bar is near the end before you connect the dynadock.

- 4 Once the video drivers are installed, the “Audio” driver will be installed automatically. If the dynadock is not detected, the following message will appear. Please connect the dynadock to your computer and click **Retry** to proceed. For detailed information on how to connect the dynadock, please refer to “Connecting the dynadock to the Computer” on page 21 of this manual.

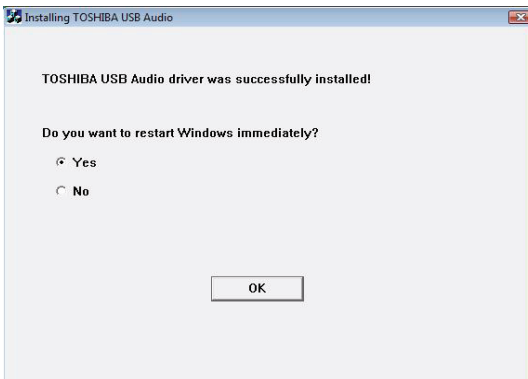


*(Sample Image) Not detected the dynadock screen*

**NOTE**

If you click "Cancel", the program will exit the installation of the driver.

- 5 After finishing the installation, the program will request that you restart the computer. Choose “**Yes**” and click **OK** to finish the setup. All devices will take effect after restarting.



*(Sample Image) Restart computer screen*



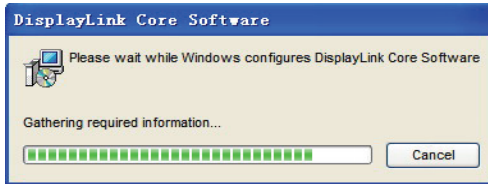
**NOTE**

This completes the installation for computers with Microsoft® Windows Vista® operating system.

**Windows® XP Operations:**

- 3** After the utility installation is completed, the “Video” driver will be installed automatically.

Step 1: Select the language of End User License Agreement and click **I Accept**.

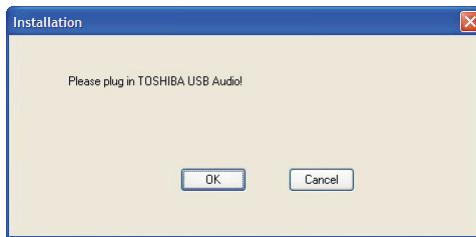


*(Sample Image) Video driver Install screen*

**NOTE**

During the installation, there will be various screens opening and closing and the display may flicker during this time. This is normal. A dialog box may prompt to restart the computer. Please do not restart at this time in order to install additional drivers.

Step 2: When the dialog box shown below appears, connect the dynadock to your computer. For detailed information on how to connect the dynadock, please refer to "Connecting the dynadock to your computer" section of this manual. Click "OK" to continue the installation process.



*(Sample Image) Not detected the dynadock screen*

- 4** Once the video drivers are installed, a message will prompt you to install the “Audio” driver.

If the dynadock is not detected, the previous message will appear again. Please make sure the dynadock is connected correctly.

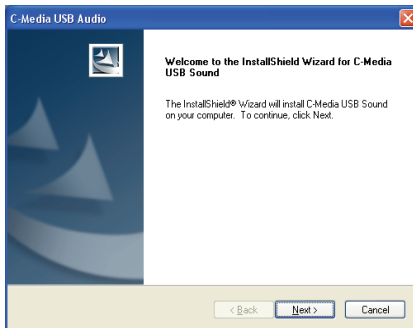
If you click **Cancel**, the program will exit the installation of the audio driver.

**NOTE** Installation of the “Audio” driver will fail if the dynadock is not connected to the computer.

## 5 Install audio drivers.

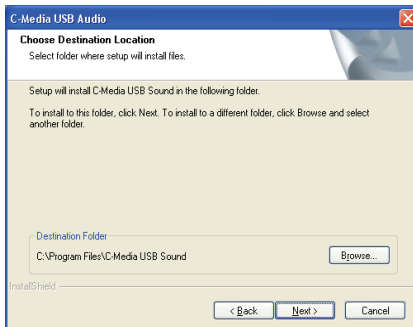
Follow the on-screen directions to finish the audio driver installation.

Step 1: When the welcome screen appears, click **Next**.



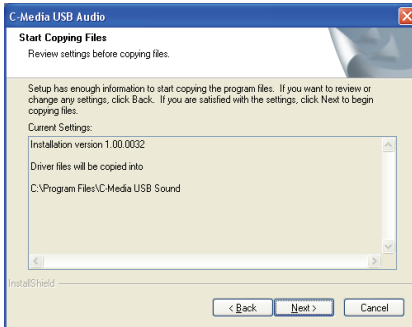
*(Sample Image) Setting selection screen*

Step 2: Choose a destination location for the installation or just use the default location. Then click **Next**.



*(Sample Image) Choose Destination Location screen*

Step 3: Click **Next** to start copying the program files to your computer. This step may take a few minutes to install.



*(Sample Image) Installation files copying screen*

- 6 After finishing the installation, the program will request that you restart the computer. Choose “**Yes, I want to restart my computer now**” and click **Finish** to finish the setup. All devices will take effect after restarting.



*(Sample Image) Restart computer screen*

## NOTE

This completes the installation for computers with Microsoft® Windows® XP operating system. A prompt will show up after you reboot your system to inform you the support and user registration informations.

## Background Utility Program

After the dynadock utility is installed, a program named ‘TOSUSBSvr.exe’ will run automatically in the background. It can

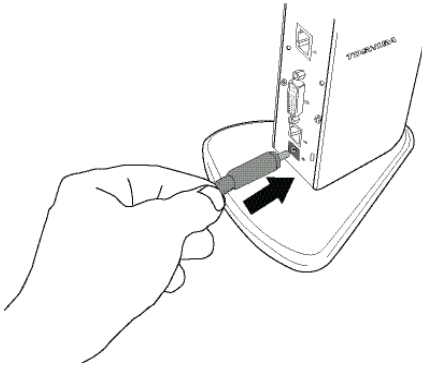
be viewed in the Windows Task Manager. The program can detect the insertion and removal of the dynadock.

**NOTE**

The utility program does not impact any other programs on your computer. Please do not turn it off.

## Connecting the dynadock™ to the Computer

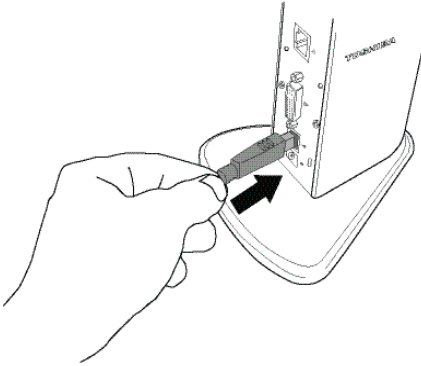
- 1 Plug the AC adaptor cord/cable into the DC-IN on the back of the dynadock.



*(Sample Illustration) Connecting the AC adaptor cord to the dynadock*

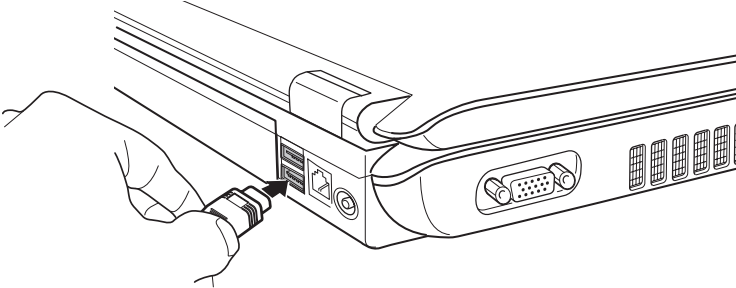
- 2 Connect the AC Power Adaptor with the AC power cord/cable, and then connect the AC power cord/cable to a live electrical outlet. The power indicator on the front panel glows blue when the dynadock is powered on.

- 3 Plug the square end of the USB cable into the USB upstream port on the back of the dynadock.



*(Sample Illustration) Connecting the USB cable to the dynadock*

- 4 Plug the other end of the USB cable into an available USB 2.0 port on your computer.



*(Sample Illustration) Connecting the USB cable to your computer*

## NOTE

Be sure to remember which USB port is used during the driver installation and always plug the dynadock into the same USB port, otherwise the Windows® operating system will treat the dynadock as a new device and ask to install the drivers again. Only one dynadock can be operated on one computer at a time.

## Uninstalling

To remove the dynadock Utility and all the drivers from your computer, please follow the following procedures to remove the Utility, the Video driver or the Audio driver.

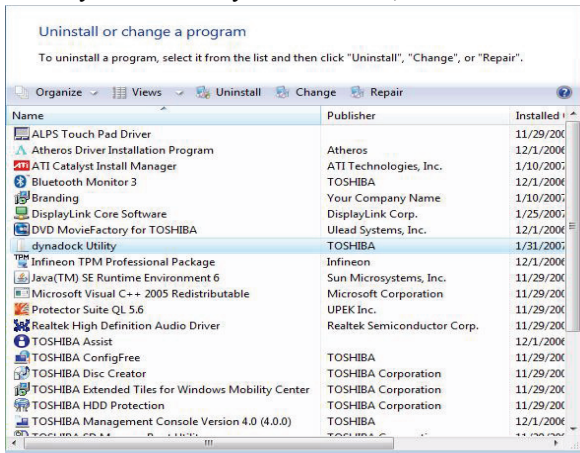
### NOTE

- Before starting the steps below, you must eject the dynadock™ from your computer using the TOSHIBA dynadock™ utility icon on your Notification Area/System Tray.
- Disconnect the dynadock™ from the computer. Any devices connected to the dynadock™ will be disabled.
- Close all other programs and applications.
- You may be prompted to reboot your computer twice before uninstalling is completed.

## Uninstalling - Windows Vista® Operations

### Uninstalling the Utility

- 1 To remove the dynadock utility from your computer, click **Start** > **Control Panel** and then **Uninstall a program**. Choose “dynadock Utility” from the list, and click the **Uninstall** button.



(Sample Image) Uninstall the program window

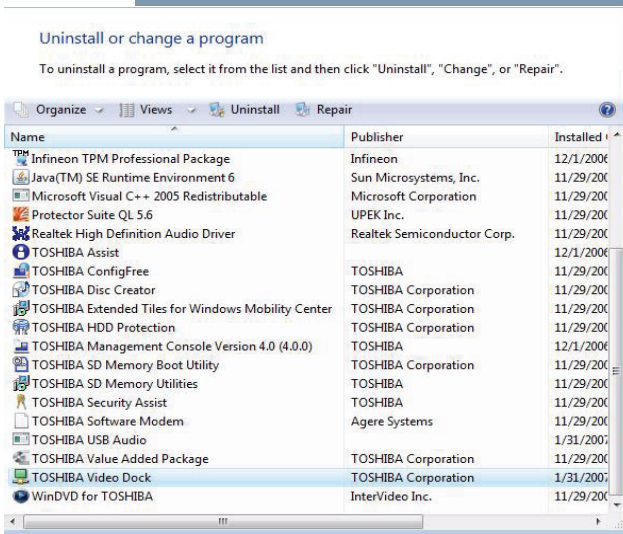
- 2 Follow the on-screen directions to finish uninstalling.

## Uninstalling the Video Driver

- 1 To remove the Video driver, click **Start > Control Panel** and then **Uninstall a program**. Choose "TOSHIBA Video Dock" from the list, and click the **Uninstall** button.

### NOTE

During the uninstall, other windows will open. You will be prompted to reboot your computer to continue the uninstall process. Do not reboot until the DisplayLink Core Software, Please wait... window, Windows "Uninstall or change a program" window, and the Restart prompt are the only windows open when you choose Yes to restart.

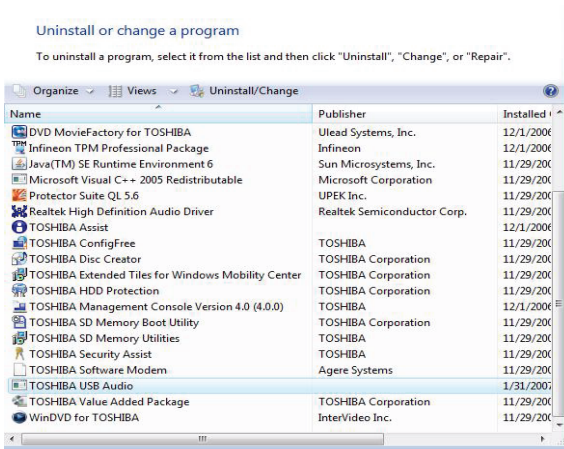


(Sample Image) Uninstall TOSHIBA Video Dock window

- 2 Follow the on-screen directions to finish uninstalling.

## Uninstall the Audio Driver

- 1 To remove the Audio driver, click **Start > Control Panel** and then **Uninstall a program**. Choose “TOSHIBA USB Audio” from the list and click the **Uninstall/Change** button.



*(Sample Image) Uninstall TOSHIBA USB Audio window*

- 2 Follow the on-screen directions to finish uninstalling.

## Uninstalling - Windows® XP Operations

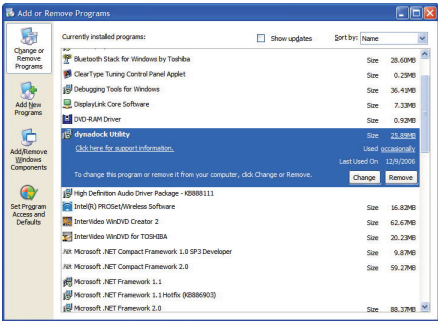
### Uninstalling the Utility

- 1 To remove the dynadock utility from your computer, click **Start > Control Panel** and then **Add/Remove Programs**. Choose “dynadock Utility” from the list, and click the **Remove** button.



NOTE

When completed you do not get any window/notice stating that the uninstall is complete.



(Sample Image) Remove the program window

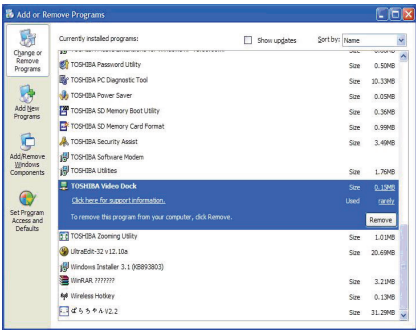
- 2 Follow the on-screen directions to finish uninstalling.

Uninstalling the Video Driver

- 1 To remove the Video driver, please click **Start > Control Panel** and then **Add/Remove Programs**. Choose “TOSHIBA Video Dock” from the list and click the **Change/Remove** button.

NOTE

During the uninstall, other windows will open.

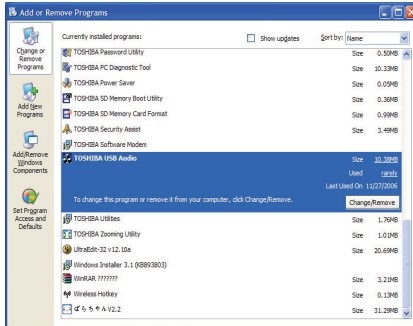


(Sample Image) Remove TOSHIBA Video Dock window

- 2 Follow the on-screen directions to finish uninstalling.

## Uninstall the Audio Driver

- 1 To remove the Audio driver, please click **Start > Control Panel** and then **Add/Remove Programs**. Choose “TOSHIBA USB Audio” from the list and click the **Change/Remove** button.



*(Sample Image) Remove TOSHIBA USB Audio window*

- 2 Follow the on-screen directions to finish uninstalling.

## Using the dynadock™

You may connect devices to the appropriate ports on the dynadock while your computer is running. A slight delay and display flickering is normal before the computer recognizes the new device.

## USB 2.0 Ports (Front and Back Panel)

Connect any USB device to one of the dynadock's six USB ports.

- ❖ When no device is connected to the port, the indicator light is off.
- ❖ If a device is connected to the port and the connection works properly, the indicator light glows green (on).
- ❖ If your USB device, such as a printer or optical drive, etc., came with its own AC adaptor, make sure that it is plugged into the device and a live electrical outlet.

### NOTE

Only the front two USB ports provide power when the computer is either off, suspended or disconnected. This enables you to re-charge select MP3 players, cellphones and other devices. Not all devices can be charged through these ports.

## Ethernet Port (Back Panel)

Connect one end of a network cable (not provided) to the Ethernet port (RJ-45) on the dynadock and the other end to your network for high performance network access. To configure the network properties of the Ethernet adapter:

In Windows Vista®, select **Start > Control Panel > View network status and tasks > Manage network connections**.

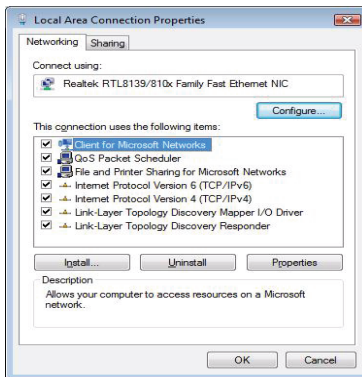
In Windows® XP, select **Start > Settings > Network Connections**.

In the **Network Connections** folder, double-click the connection icon for the dynadock's Ethernet adapter, which is indicated by ASIX AX88772 USB2.0 to Fast Ethernet Adapter.



*(Sample Image) Network Connection icon*

This will open the **Local Area Connection Properties** window for you to configure the network settings as required according to your network environment. If you are unsure about the settings, consult your network administrator for assistance.



*(Sample Image) Local Area Connection Properties Window*

### NOTE

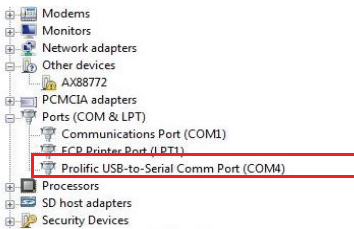
The LAN port does not support Wake-up-On-LAN.

## Serial Port (Back Panel)

To connect a serial device, attach the serial cable (not provided) to the serial port on the dynadock and your serial device. Then install the software driver according to the instructions that come with the device. When prompted to select the port, choose **COMx**, where x is the **COM** port number assigned by your operating system.

To see the **COM** port number assigned by your operating system:

- 1 In Windows Vista®, right-click **Computer** and select **Device Manager**.  
In Windows® XP, right-click **My Computer** and select **Properties**. Then click **Hardware** > **Device Manager**.
- 2 Under the **Ports (COM & LPT)** group, you should be able to find **Prolific USB-to-Serial Comm Port**. The com port number will appear next to the string.



*(Sample Image) Locating the Serial Comm Port*

## Front Panel Audio Port (Microphone)

To connect a microphone, plug the 3.5 mm mono microphone jack into the microphone input port.

### NOTE

Your operating system may prompt you to continue.

## Front Panel Audio Port (Headphones or Speakers)

After installing the provided audio software, a **USB 3D 106 Sound Configuration** utility is installed in your computer. It can be accessed by double-clicking the **USB 3D 106 Sound Configuration** icon on the system tray. (The icon may be hidden if the Windows® operating system recognizes it as inactive)



*(Sample Image) USB 3D 106 Sound Configuration*

**NOTE**

If the audio software has been properly installed and the icon is not on the system tray, it means the dynadock is connected to a different USB port from the one originally connected for installation. Re-plug the dynadock into the original USB port and the icon will appear again.

The utility comes with a friendly graphic user interface to optimize your audio effects. Most of the settings can be adjusted using the available sliders, images or buttons. Just make the adjustments to suit your personal preferences.

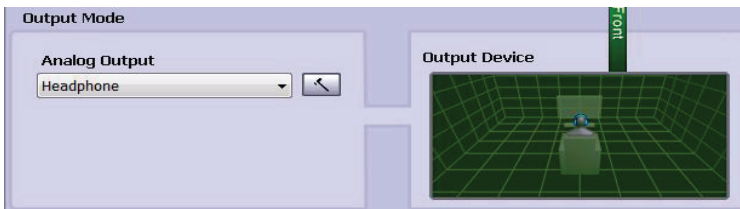
### Using Virtual 7.1CH Function on 2CH Speakers/headphones

The audio output port on the front panel is used to connect stereo speakers or headphones. Although 2CH speakers may be connected, a virtual 7.1CH surround sound experience is possible using the software's virtual multi-channel function.

To enable the virtual 7.1CH audio function on 2CH speakers or headphones:

### Windows Vista® Operations

- 1 In the Analog Output section, select headphone.



*(Sample Image) Select headphone*

- 2 On the panel, click the 7.1 Virtual SPEAKER SHIFTER button to enable the virtual multi-channel function. The icon will turn blue and a mark will be shown in the rightside window when selected.



*(Sample Image) 7.1 Virtual SPEAKER SHIFTER button*

- 3 The button next to DSP Mode string allows you to enter the SHIFTER control window.



*(Sample Image) DSP button*

Click on the **Virtual Speaker Shifter** button to open the Shifter controls. See page 32 for the SHIFTER Control window sample image.

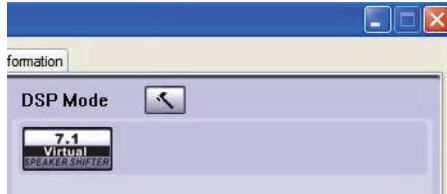
## Windows® XP Operations

- 1 In the Analog Output section, select headphone icon.



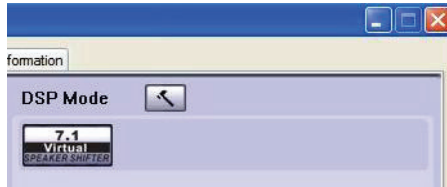
*(Sample Image) Select headphone*

- 2 On the panel, click the 7.1 Virtual SPEAKER SHIFTER button to enable the virtual multi-channel function. The icon will turn blue when selected.



*(Sample Image) 7.1 Virtual SPEAKER SHIFTER button*

- 3 The button next to DSP Mode string allows you to switch between the SHIFTER control and basic control window.



*(Sample Image) DSP button*

Click on the **Virtual Speaker Shifter** button to open the Shifter controls. See page 32 for the SHIFTER Control window sample image.

## Using the Virtual Speaker Shifter Controls

- 1 Volume control
- 2 Rotate all the virtual speakers clockwise
- 3 Rotate all the virtual speakers counterclockwise
- 4 Manually rotate all the virtual speakers
- 5 Manual shifting function. You can drag a specific virtual speaker to the preferred position to enhance an individual channel output. For example, a low-volume center (for dialog) can be enhanced by being dragged closer to you
- 6 Reset the speakers to default settings

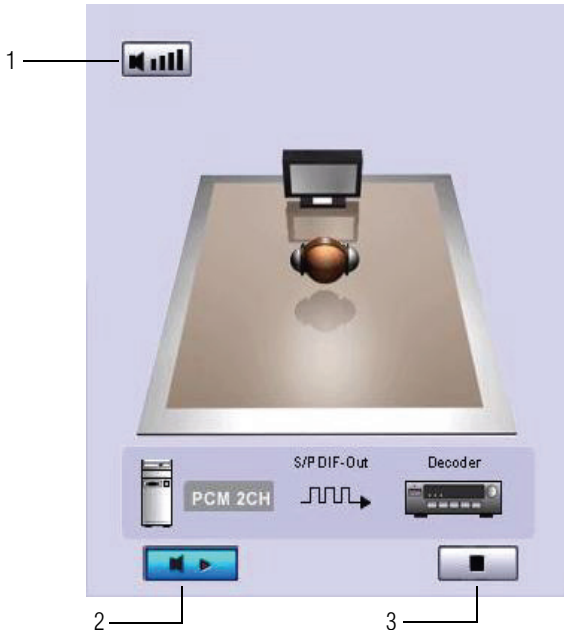


*(Sample Image) Shifter Controls*



### Using the Basic Controls - Windows® XP only

- 1** To adjust/reset the volume of the left and right channel of your speakers/headphones
- 2** To test the left and right channel of your speakers/headphones
- 3** Stops the audio test



*(Sample Image) Basic controls screen*

#### NOTE

This can only be seen in Windows® XP.

### Digital S/PDIF Output - Windows® XP only (Back panel)

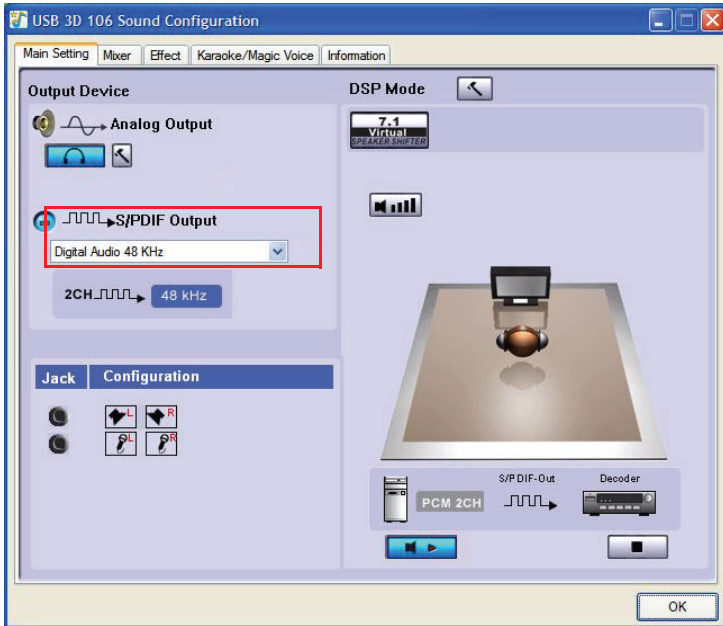
Using the S/PDIF output function you can directly output the digital sound source from the computer to your home theater equipment without loss of sound quality.

To experience true digital sound quality:

- 1** Make sure your DVD content supports Dolby® Digital or DTS format.

- 2 Make sure your external decoder/AV receiver that connects to the dynadock supports Dolby® Digital or DTS decoding capability.
- 3 Turn on the S/PDIF function in the USB 3D 106 Sound Configuration utility.

On the **Main Setting** tab of the utility, click the button next to the **S/PDIF Output** string and select **Digital Audio 48KHz** from the drop-down menu.



*(Sample Image) S/PDIF selection*

- 4 Configure the Audio Output setting of your DVD playback software to use S/PDIF. (Access the software's setup or configuration panel to locate the Audio Out item).

## NOTE

In order to use the S/PDIF function in Windows Vista®, select **Start > Control Panel > Hardware and Sound > Sound**. In the Playback tab, set the Digital Output as default device.

---

## Video Port (VGA or DVI)

### Connection

The dynadock is available in two versions:

**VGA** – for connection to VGA interface monitors

**DVI** – for connection to DVI interface monitors

The DVI version of the dynadock includes a DVI to VGA adapter to connect to a VGA monitor.

Although the ports and video drivers are different, the connection and setup is the same.

Connect the monitor cable (not provided) to the video output port on the dynadock and the external monitor. This cable can be connected and disconnected any time without disconnecting the dynadock from the USB port on your computer.

---

#### NOTE

The dynadock should be connected to a USB 2.0 port for optimal video performance. The dynadock will work connected to a USB1.1 port, however video performance will be compromised. The USB connector may be plugged and unplugged while the dynadock is on.

---

You can customize the video settings of the dynadock.. See Adjusting Video Settings for more information.

### Viewable screens

The dynadock video drivers give you the option of viewing a total of three screens.

- 1** The screen on the notebook,
- 2** External monitor connected to the video port on the notebook (if available)
- 3** External monitor connected to the dynadock

---

#### NOTE

The external monitor connected to the dynadock may be identified as either "2" or "3" on the Windows Display Properties screen (depending on your model) although there may not be a total of 3 screens connected.

---

## Video Modes

The dynadock video output works in two modes:

- ❖ Mirror Mode
- ❖ Extended Mode

### Mirror Mode

This mode “mirrors”—creates an identical display – from your computer screen to the external monitor. This is useful, for example, if you want to use a larger desktop monitor rather than the computer screen. In Mirror Mode, the dynadock automatically selects the settings (screen resolution, color quality and refresh rate) for the external monitor that will allow the best resolution based on your computer's settings.

By initial setup default, the dynadock uses video output in Mirror Mode.

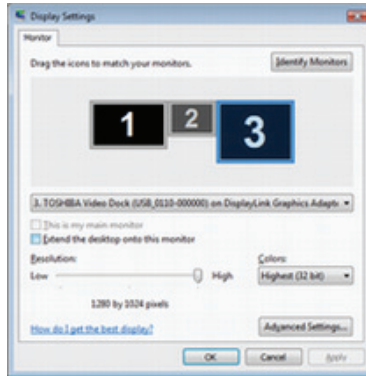
### Extended Mode

Extended Mode lets you split your display across multiple monitors. This provides a number of advantages to increase productivity:

- ❖ View your large spreadsheets across two or three screens with display continuity.
- ❖ Multitask more effectively without overlapping windows
- ❖ Compare two documents simultaneously across two/three screens
- ❖ View videos/TV on one screen and reviews on the other

**Set up the dynadock for Extended Mode - Windows Vista® Operations:**

- 1** Position the mouse anywhere on your computer Desktop, right-click and select **Personalize**. The **Personalize appearance and sounds** screen will pop up.
- 2** On the **Personalize appearance and sounds** screen, click **Display Settings**. The **Display Settings** screen will pop up.

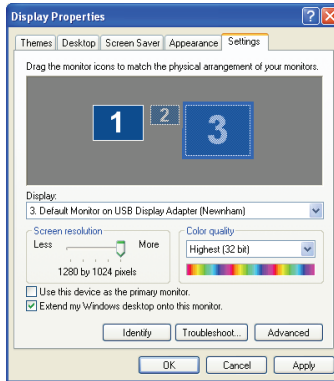


*(Sample Image) Display Properties screen*

- 3 On the Display Settings screen, click the **Monitor** tab. In the pull -down menu, select the option containing **TOSHIBA Video Dock**.
- 4 Check the Extend the desktop onto this monitor box.
- 5 Drag the monitor icons (1,2 or 3) in the window at the top of the screen to match the physical arrangement of your computer screen and external monitor.
- 6 Click **OK** to close the Display Settings screen.

Set up the dynadock for Extended Mode - Windows® XP Operations:

- 1 Position the mouse anywhere on your computer Desktop, right-click and select Properties. The Display Properties screen will pop up.
- 2 On the Display Properties screen, click the Settings tab. In the Display pull -down menu, select the option containing TOSHIBA Video Dock.
- 3 Check the Extend my windows desktop onto this monitor box.
- 4 Drag the monitor icons (1,2 or 3) in the window at the top of the screen to match the physical arrangement of your computer screen and external monitor.
- 5 Click OK to close the Display Properties screen.



*(Sample Image) Display Properties screen*

## NOTE

Monitor "2" will also need to be configured for extended mode in order to use three monitors together in extended mode.

## Switching from Extended Mode to Mirror Mode

Follow these steps to change the video output to Mirror Mode:

Windows Vista® Operations:

- 1 Position the mouse anywhere on your computer Desktop, right-click and select **Personalize**. The **Personalize** appearance and sounds screen will pop up.

- 2 On the Personalize appearance and sounds screen, click Display Settings. The Display Settings screen will pop up.



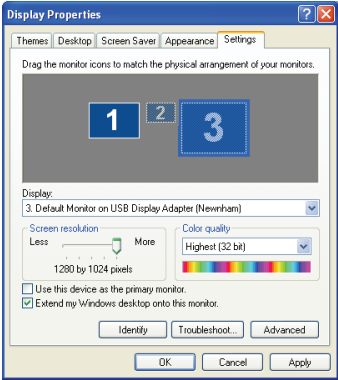
*(Sample Image) Display Properties screen*

- 3 On the Display Settings screen, click the **Monitor** tab. In the pull -down menu, select the option containing TOSHIBA Video Dock.
- 4 Uncheck the Extend the desktop onto this monitor box.
- 5 Click **OK** to close the Display Settings screen.

Windows® XP Operations:

- 1 Position the mouse anywhere on your computer desktop, right-click and select **Properties**. The Display Properties screen will pop up.
- 2 On the Display Properties screen, click the **Settings** tab. In the Display pull -down menu, select the option containing **TOSHIBA Video Dock**.
- 3 Uncheck the Extend my windows desktop onto this monitor box.

4 Click **OK** to close the Display Properties screen.



*(Sample Image) Display Properties screen*

**NOTE** Monitor “2” will also need to be configured for mirror mode in order to use three monitors in mirror mode.

### Adjusting Video Settings

There are three components that make up the screen mode:

- Resolution:** In common usage, this refers to the number of pixels displayed on the screen horizontally and vertically.
- Color Depth:** This defines the number of different colors that can be shown on the screen at the same time.
- Refresh rate:** Measures the speed that the entire screen is rescanned. Higher frequencies reduce flicker.

Below is a list of refresh rates supported at various resolutions and color depths for the VGA and DVI component:

| Resolution/<br>Color<br>Depth | 640x480  | 800x600        | 1024x768    | 1280x768 | 1280x960 | 1280x1024 |
|-------------------------------|----------|----------------|-------------|----------|----------|-----------|
| 16 bit                        | 60 72 75 | 56 60 72 75 85 | 60 70 75 85 | 60 75 85 | 60 85    | 60 75 85  |
| 32 bit                        | 60 72 75 | 56 60 72 75 85 | 60 70 75 85 | 60 75 85 | 60 85    | 60 75     |
|                               | 1280x800 | 1440x900       |             |          |          |           |
| 16 bit                        | 60       | 60             |             |          |          |           |
| 32 bit                        | 60       | 60             |             |          |          |           |



The DVI-component PA3542 Model additionally supports:

|                            |           |           |
|----------------------------|-----------|-----------|
| Resolution/<br>Color Depth | 1600x1200 | 1680x1050 |
| 16 bit                     | 60        | 60        |
| 32 bit                     | 60        | 60        |

Note that interlaced modes are not supported and the resolutions listed above may not be supported by your monitor.

Additional modes may be offered, depending upon the connected monitor, but these are not currently guaranteed.

If the monitor does not advertise the supported modes, the VGA or DVI component will choose a set of common screen modes.

If cloning the primary display, the VGA or DVI component will try to use the preferred monitor mode. In some cases, this may not be the most appropriate mode for the mirrored desktop. It is recommended that the primary display resolution be changed to closer match the default resolution of the dynadock monitor.

**NOTE**

For more information on supported modes, be sure to check the documentation supplied with your monitor.

**Initial Use**

When the VGA or DVI component first starts, it will extend the primary monitor. Changes to the screen mode and VGA or DVI component operation mode can be made under the Windows display properties.

If no output is seen on the monitor connected to the VGA or DVI component, it may be in a mode which cannot be displayed by the monitor. This can happen if the monitor does not report its supported modes to the VGA or DVI component. Reduce the resolution of the primary display, and in turn the resolution of the VGA or DVI component display until an image is shown.

**NOTE**

Placing the monitor into an unsupported mode for long periods can damage it.

---

### Adjusting the Video Settings for the monitor connected to the dynadock- Windows Vista® Operations:

- 1 Position the mouse anywhere on your computer desktop, right-click and select **Personalize**, then click **Display Settings**.
- 2 To change the screen resolution or color quality, select those options on the screen. Be sure to select one of the supported resolutions and color quality numbers in the table above. For an external monitor, you can also select any resolution or color quality supported by that monitor.
- 3 To change the refresh rate, on the Display Settings screen, click **Advanced Settings** and then click **Monitor**.
- 4 Select a refresh rate from the **Screen refresh rate** pull down list. Be sure to select a refresh rate that is supported for the resolutions and color depth settings, as indicated in the table above. Then click **OK**.
- 5 Click **OK** to close the **Display Settings** screen.

### Adjusting the Video Settings for the monitor connected to the dynadock - Windows® XP Operations:

- 1 Position the mouse anywhere on your computer desktop, right-click and select **Properties**. The **Display Properties** screen will pop up.
- 2 On the **Display Properties** screen, click the **Settings** tab.
- 3 To change the screen resolution or color quality, select those options on the screen. Be sure to select one of the supported resolutions and color quality numbers in the table above. For an external monitor, you can also select any resolution or color quality supported by that monitor.
- 4 To change the refresh rate, on the Display Properties screen, click **Advanced** and then click **Monitor**.
- 5 Select a refresh rate from the **Screen refresh rate** pull down list. Be sure to select a refresh rate that is supported for the resolutions and color depth settings, as indicated in the table above. Then click **OK**.
- 6 Click **OK** to close the **Display Properties** screen.

If you use multiple dynadocks with a single computer – for example, one at work and one at home – the video settings for each dynadock are saved when you disconnect the computer. This enables you to have your dynadock at work set up for the Extended Mode while your dynadock at home is configured for Mirror Mode, and those

settings will be retained each time you use the dynadock with your computer.

## How Standby/Sleep or Hibernate Mode Affects Devices Attached to the dynadock™

### External Monitors

The external monitor connected to the dynadock will go blank if the computer goes into Standby/Sleep or Hibernate Mode.

When in Mirror Mode, the external monitor keeps the same settings it had before the computer went into Standby/Sleep or Hibernate Mode once the computer returns to an active state

When in Extended Mode, windows that were previously on the external monitor will not move back to that secondary monitor once the computer returns to an active state

Also, if the external monitor is in Extended Mode and the computer requires a login after Standby/Sleep or Hibernate Mode, the login screen appears on the primary computer monitor, not the external monitor.

### Other Devices

If another device is connected to a port on the dynadock and the computer goes into Standby/Sleep or Hibernate Mode, that device will not function. For example, if you are using the Ethernet port for high-speed network access, network access will not be available until the computer returns to an active state.

## Disconnecting the dynadock™

### Eject Dock

When the dynadock is connected to your computer, the TOSHIBA dynadock Utility can remove all devices with one-click. Please follow these steps:

- 1 Right-click the icon in the system tray.

- 2 Select “Eject Dock” from the menu to start the eject process.



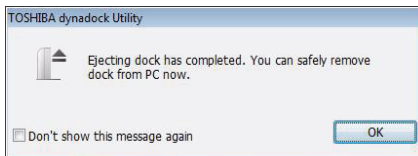
*(Sample Image) Eject Dock screen*

- 3 Wait before removing the dynadock from the system.



*(Sample Image) Undocking screen*

If the dynadock is removed from the system successfully, the icon in the system tray will disappear. Disconnect the USB cable from your computer's USB port.



*(Sample Image) Prompt message*

## CAUTION

It is important that you correctly disconnect the dynadock by following the steps above. Failure to do so may cause data loss and/or damage to your computer and devices connected through the dynadock.

## Eject Dock and Sleep

When the dynadock is connected to your computer, the TOSHIBA dynadock Utility can remove all devices and let the system sleep instantly with one-click. Please follow these steps:

- 1 Right-click the icon in the system tray.

- 2 Select “Eject and Sleep” from the menu.



*(Sample Image) Eject and Sleep screen*

- 3 Wait before removing the dynadock from the system.



*(Sample Image) Undocking screen*

- 4 If the dynadock is removed from the system successfully, the icon in the system tray will disappear. Disconnect the USB cable from your computer's USB port.
- 5 After that, the system will go into sleep mode.

## CAUTION

It is important that you correctly disconnect the dynadock by following the steps above. Failure to do so may cause data loss and/or damage to your computer and devices connected through the dynadock.

## Eject by use of command line

You can run dynadock Utility by command line, please follow the steps below:

- 1 Click **Run...** on **Start menu**.
- 2 Input "**C:\Program Files\TOSHIBA\dynadock Utility\TOSUSBSvrCtrl.exe**"  **/eject**, and run the program.

**NOTE**

**C:\Program Files\TOSHIBA\dynadock Utility\** is the default directory path of your program. If you have changed the path when installing, please enter your specified path.  
\_ means "space". Please do leave a space here.  
**eject** is the command to execute the function. There are two commands:  
1. **eject**: The same function as you click "Eject Dock", please refer to [Eject Dock](#).  
2. **ejectsleep**: The same function as you click "Eject and sleep", please refer to [Eject Dock and Sleep](#).

## Changing the dynadock Utility Settings

The TOSHIBA dynadock Utility setting program allows users to change the "Eject Dock" setting.

### Opening the Setting Dialog box

- 1 Click "**Start**" and then click "**Control Panel**".
- 2 Double-click the "**TOSHIBA dynadock Utility**" icon.

**NOTE**

The method of opening the control panel is the same in different versions of Windows® operating system. If you can not find the "TOSHIBA dynadock Utility" icon, please click "classic view" on the left of the control panel window.

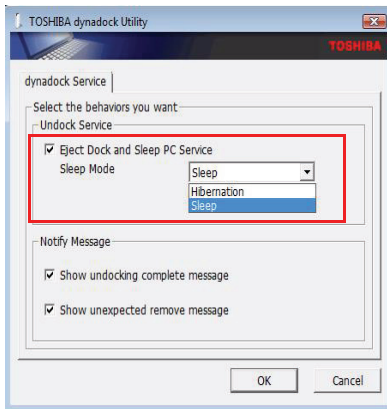
- 3 Setting dialog will appear.

## Setting Sleep Service

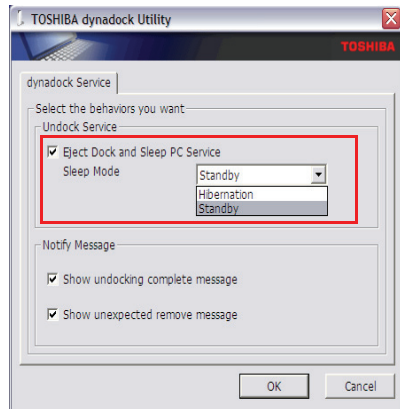
The Sleep Service allows users to put the computer in "sleep mode" after undocking the dynadock.

- ❖ Check the “**Eject Dock and Sleep PC Service**” box to enable "sleep mode" when undocking:

Users can also select the type of sleep mode (depending upon the operating system): Windows Vista® - Sleep and Hibernation or Windows® XP - Standby and Hibernation.



Windows Vista®



Windows® XP

*(Sample Image) Undock service screen*

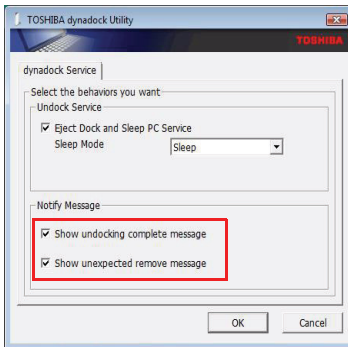
## Notify Message Service

The Notify Message Service shows warning messages when you undock the dynadock.

By default, the boxes are checked.

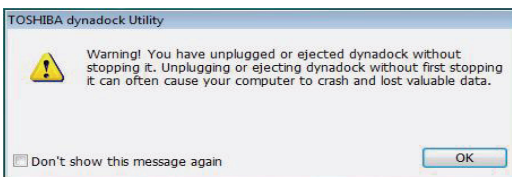
### NOTE

TOSHIBA recommends that you do not uncheck these boxes. If the boxes are unchecked, there will be no warning messages if the dynadock is improperly ejected/disconnected.



*(Sample Image) Notify message service screen*

The following warning message appears when the dynadock is improperly ejected/disconnected.



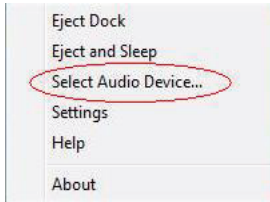
*(Sample Image) Warning message*



## Select Audio Device

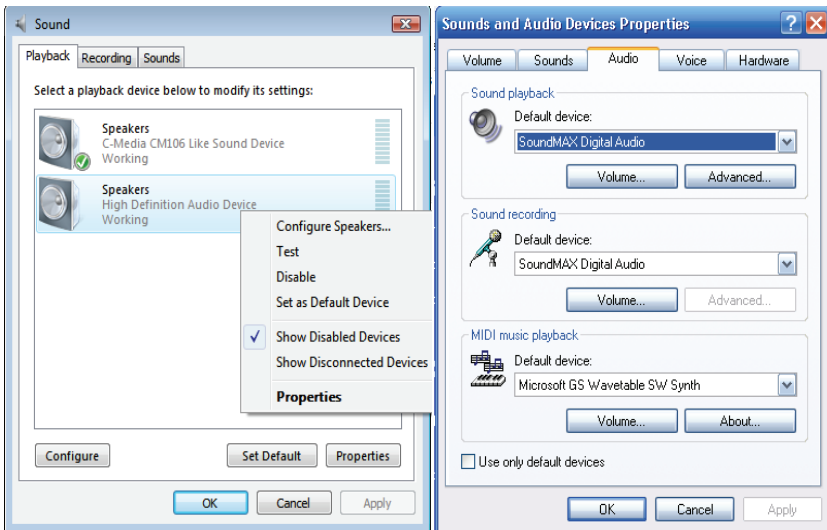
Once *dynadock*™ is installed, the sound on the notebook will be disabled, enabling you to connect external speakers. To re-enable sound through your notebook, please follow these steps:

- 1 Right-click the icon in the system tray.
- 2 Select “Select Audio Device” from the menu.



*(Sample Image) Select Audio Device screen*

- 3 Change the “Sound playback” default device to other than “C-Media CM106 Like Sound Device”.



Windows Vista®

Windows® XP

*(Sample Image) Change Audio Device screen*

## Update Support

Update Support is a menu option in the dynadock utility. This option allows you to access direct internet links to both [www.dynadock.com](http://www.dynadock.com) for software updates and the customer support registration website. Registering on the customer support website allows you to receive automatic software update notifications via email.

## Specifications

This section summarizes the dynadock’s technical specifications.

### Physical Dimensions

|        |   |
|--------|---|
| Weight | 507g/17.8 ounces (including the Base)   |
| Size   | 45(w) x 78(d) x 210(h) mm/1.8" (w) x 3.1" (d) x 8.27" (h)<br>(not including the parts that extend beyond the main body)<br><br>114(w) x 130(d) x 223(h) mm/4.5" (w) x 5.2" (d) x 8.8" (h)<br>(including the Base) |

### Environmental Requirements

| Conditions           | Ambient temperature           | Relative humidity |
|----------------------|-------------------------------|-------------------|
| Operating            | 5°C to 35°C (41°F to 95°F)    | 20% to 80%        |
| Non-operating        | -20°C to 65°C (-4°F to 149°F) | 10% to 90%        |
| Thermal Gradient     | 20°C per hour maximum         |                   |
| Wet-bulb Temperature | 26°C maximum                  |                   |

### Power Requirements

|            |                    |
|------------|--------------------|
| AC adaptor | Input: AC 100-240V |
|            | Output: DC 5V / 5A |

General Specifications

|   |  |
|---|--|
| Computer Interface                            | USB 2.0  |
| Ports and Connectors                          | 4 USB ports in the back<br>2 Powered USB ports in front<br>1 x S/PDIF (optical digital audio output)<br>1 x Ethernet Port (10/100 Base-T Ethernet RJ-45 connector)<br>1 x Serial Port<br><br>VGA x 1 (Analog D-SUB 15pin Female Connector)<br>OR<br>DVI-I x 1 (Digital 24-pin + Analog5-pin Female Connector)<br><br>1 x microphone (3.5 mm mono audio in)<br>1 x headphones or speakers(3.5 mm stereo audio out)<br>1 x USB 2.0 Port (Type B female Connector)<br>1 x DC-in plug<br>1 x Cable Lock Slot |
| Supported Video Display Modes                 | Windows® XP: Mirror Desktop, Extended Desktop, Primary Display   |
| <small>*Depending on operating system</small> | Windows Vista®: Mirror Desktop, Extended Desktop, Primary Display<br><br>*Some built-in video adapters may prevent a second monitor from being the primary display.  |

\*Specifications are subject to change without further notice.