

HASSELBLAD



User Manual

H4D-200MS

H4D-60

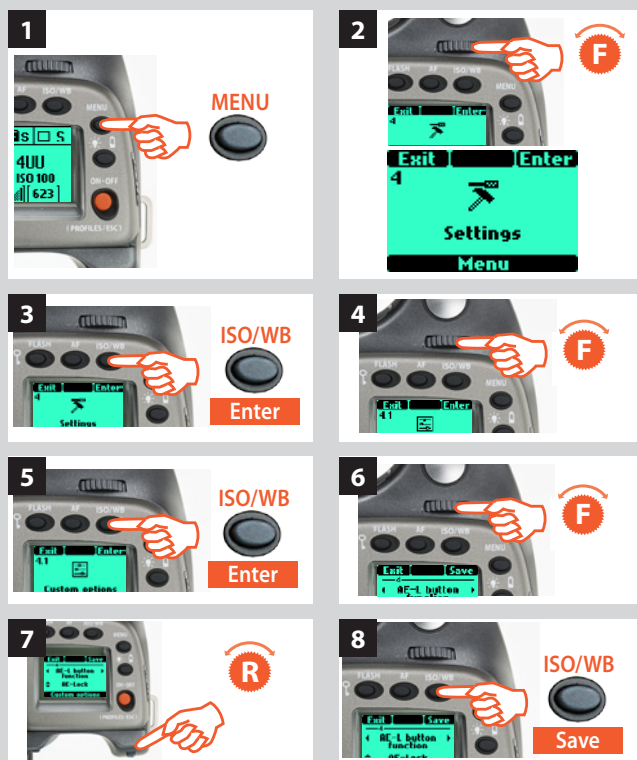
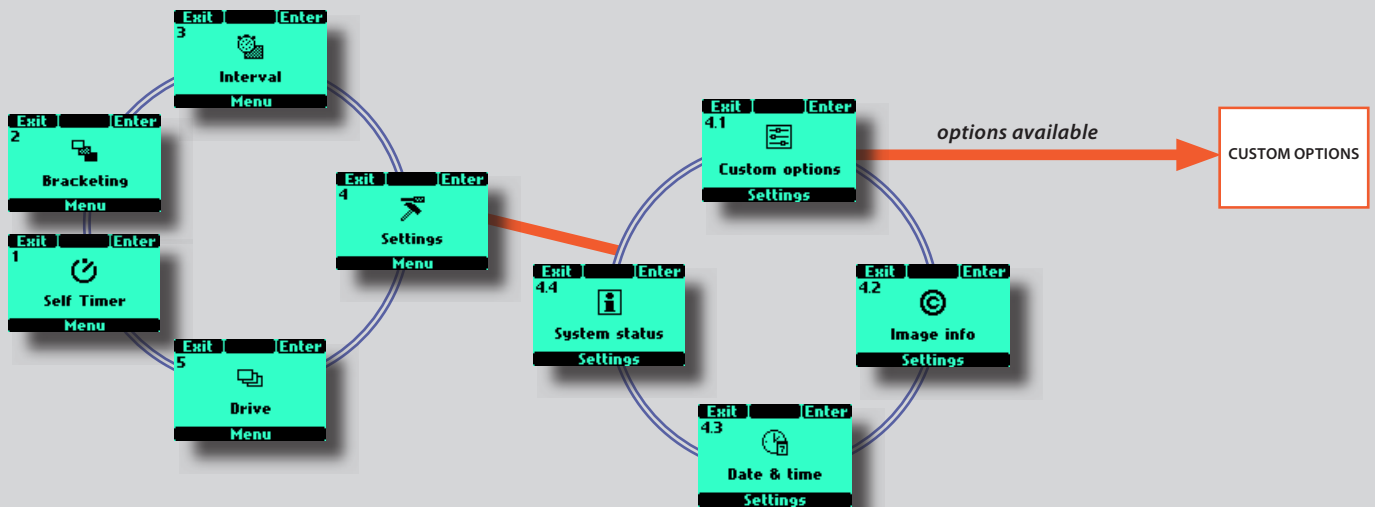
H4D-50MS

H4D-50

H4D-40

H4D-31

4 Settings / 4.1 Custom Options



Tip

As a shortcut to a specific user button (True Focus, AE-L, M, UP, Stop Down) setting in Custom Options, press the MENU and then the desired button with camera in active mode. After making any changes, press the shutter release button to save the new setting.

4 Settings

From the **Settings** screen you can access four main sub-settings: **Custom options**, **Image info**, **Date & Time** and **System status** by turning the front control wheel. From each of these sub-settings you can access further items for setting changes. Look at the main menu chart to get an idea of where all the options are on the menu tree.

4.1 Custom options

- 1) Press the **MENU** button on the grip.
- 2) Turn the front control wheel until **Settings** appears.
- 3) Press the **ISO/WB (Enter)** button on the grip.
- 4) Turn the front control wheel to access **4.1 Custom options**.
- 5) Press the **ISO/WB (Enter)** button to access the 34 choices available.
- 6) Turn the front control wheel to the desired Option.
- 7) Turn the rear control wheel to the desired Setting.
- 8) Press **Save**

In the following list, the options marked in red are the default settings. So, in the case of the User button, for example, as None is the default there will be no reaction from the camera until you make a specific choice and save it.






If you want to reset the camera to the default setting for all options, press the **ON.OFF** button quickly to enter **Profiles**, select **Standard** and then press **Load**.

Tip

As a shortcut to Custom Options level, press the MENU button twice with camera in active mode. The latest setting will automatically appear. After making any changes, press the shutter release button to save the new setting.

4.1 Custom options

The following is a description of all 34 Custom Options. They are accessed by Menu > Settings > Custom Options. The words and figures in red signify the default setting for that option.

	<p>Standby timeout 1</p> <ul style="list-style-type: none"> • 10s • 5s • 15s • 30s <p>Determines the amount of time the camera remains active before it automatically reverts to standby mode (indicated on the grip display by the H4D logo). Minimizes battery consumption.</p>
	<p>EV increment 2</p> <ul style="list-style-type: none"> • 1/2 Step • 1 Step • 1/3 Step <p>Determines the amount of EV change applied (per click of either the front or rear control wheels) to either aperture or shutter speed.</p>
	<p>Exp adjust increment 3</p> <ul style="list-style-type: none"> • 1/3 Step • 1 Step • 1/2 Step <p>Determines the amount of EV change applied (per click of the rear control wheels) when making fixed exposure adjustment settings.</p>
	<p>True Focus button function 4</p> <ul style="list-style-type: none"> • True Focus <p>but can be reassigned to:</p> <p>AF • AE-lock • Self Timer • Bracketing • Mirror up • Stop Down • B mode • T mode • Flash Measure • Interval timer • Cycle LM mode • Expose • Standby • Histogram • IAA toggle • Digital focus check • Delete last image • Grey balance exposure • Spirit Level • Rear Info Screen (Currently 60 Mpix model only) • None.</p>
	<p>AE-Lock button function 5</p> <ul style="list-style-type: none"> • AE-lock <p>but can be reassigned to:</p> <p>Self Timer • Bracketing • Mirror up • Stop Down • B mode • T mode • Flash Measure • Interval timer • Cycle LM mode • Expose • Standby • Histogram • IAA toggle • Digital focus check • Delete last image • Grey balance exposure • Spirit Level • Rear Info Screen (Currently 60 Mpix model only) • None • AF</p>



Stop down button function 6

- Stop Down

but can be reassigned to:

B mode • T mode • Flash Measure • Interval timer • Cycle LM mode • Expose • Standby • Histogram • IAA toggle • Digital focus check • Delete last image • Grey balance exposure • Spirit Level • Rear Info Screen (Currently 60 Mpix model only) • None • AF • AE-lock • Self Timer • Bracketing • Mirror up.



M.UP button function 7

- Mirror up

but can be reassigned to:

Stop Down • B mode • T mode • Flash Measure • Interval timer • Cycle LM mode • Expose • Standby • Histogram • IAA toggle • Digital focus check • Delete last image • Grey balance exposure • Spirit Level • Rear Info Screen (Currently 60 Mpix model only) • None • AF • AE-lock • Self Timer • Bracketing



Control wheel direction 8

- Clockwise • Counter clockwise

Determines the effect the direction of the controls wheels have on a setting.

For example, by moving the front control wheel to the left you can alter the aperture setting from f/8 to f/6.8 to f/5.6 and so on. By changing the wheel direction setting however, the same action of turning the wheel to the left would then produce the opposite effect, that is, the aperture settings would change from f/ 8 to f/ 9.5 to f/ 11, and so on.



Flash ready exposure lock 9

- Yes • No

Allows you to make a capture before the flash is fully charged. For use with integral flash unit or other TTL compatible flash units connected to the hot-shoe. Not valid for flash units connected by the PC connector.

Yes blocks the shutter until flash is ready.

No allows shutter release before flash is ready.



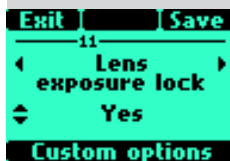
Magazine exposure lock 10

• **Yes** • **No**

Allows you to release the lens and auxiliary shutter in camera body without a sensor unit attached.

Yes blocks the lens shutter and auxiliary shutter in camera body if the sensor unit is not attached. Generates message on grip display if attempted.

No allows the lens shutter and auxiliary shutter in camera body to be released without the sensor unit attached.



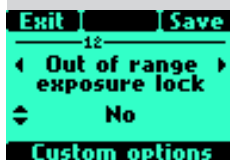
Lens exposure lock 11

• **Yes** • **No**

Allows you to release the auxiliary shutter in camera body without a lens attached.

Yes blocks the release of auxiliary shutter in camera body if there is no lens attached. Generates message on grip display if attempted.

No allows a release of auxiliary shutter in camera body without a lens attached.



Out of range exposure lock 12

• **No** • **Yes**

Allows you to release the camera when either the aperture or shutter speed setting is beyond the working range (indicated on the displays by “-”).

Yes blocks the shutter if beyond the working range.

No allows the shutter to be released (1/800s or 32s) if beyond the working range.



True exposure 13

• **On** • **Off**

Determines whether the exposure is automatically adjusted to create a true exposure setting. (See Appendix for full explanation).

On allows the adjustment.

Off retains the normal setting.

Note

If using flash/strobe as the main light source and 1/800s shutter speed, remember to turn off the True Exposure option.



Spot mode 14

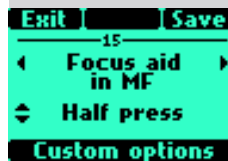
• **Normal** • **Zone**

Determines how the camera behaves when set to Spot Mode.

Normal makes the camera behave in the same fashion as when set to Average or Centre Weighted.

Zone makes the camera behave in the same fashion as the Hasselblad 205FCC. That is, the central spot is placed over a particular area of the subject and the AE-L button is pressed. The exposure is then calculated assuming that the metered area is 18% grey or Zone 5 and is indicated on the display as Zone 5. Alternatively, the area can be reassigned to another zone by turning the rear control wheel.

Then, when the camera is moved, the areas within the central spot are indicated by their zone values.



Focus aid in MF 15

• **Half press** • **Always** • **Off**

Sets how the focus aid arrowhead LED symbols appear in the viewfinder display in manual focus mode.

Half press makes them visible when the shutter release button is pressed half way.

Always makes them visible all of the time when camera is active.

Off disables them completely.



AF assist light 16

• **Ext flash** • **Camera** • **Off**

Allows projection of light pattern to assist the autofocus system in poor light or low contrast situations.

Camera sets the integral AF assist illumination to be always active.

External flash activates the AF assist illumination projected by a suitable attached external flash unit. When detached, however, the integral system is automatically used.

Off sets the AF assist illumination to remain always inactive.

Rear wheel quick adjust 17

- **Yes** • No

Allows rear control wheel to make a rapid EV adjustment (or EV compensation) in auto-exposure mode.

Yes turns the setting on. By turning the rear control wheel, the adjustment is made and appears on both displays as a \pm symbol between the shutter speed and aperture values. The amount of deviation also appears above the scale to the left of the aperture value on the viewfinder display.

No turns the function off completely.

Control lock 18

- **All controls** • Wheels • Off

Sets the amount of locking used when the Control Lock (FLASH) button is pressed.

All controls locks control wheels and buttons.

Wheels locks only control wheels. They remain operable in any setting mode, however.

Off disables lock function.

Beeper 19

- **On** • Off

Sets the audible beeper signal.

On enables the signal.

Off disables the signal.

Show histogram 20

- **Yes** • No

Sets whether a histogram of a capture appears on the display after exposure.

Yes enables the setting.

No disables the setting.

Interval & Self Timer 21

- **Exit** • Stay

Allows either the Interval or Self Timer mode to remain active after a capture or immediately return to standard setting.

Exit clears the setting and produces an automatic return to standard setting after a capture.

Stay retains the setting after a capture.

AE lock / Quick adjust 22

- **Exp reset** • Saved

Allows either the AE-Lock or Quick adjust mode to remain active after a capture or immediately return to standard setting.

Exp Reset clears the settings and produces an automatic return to standard setting after a capture.

Saved retains the AE-Lock or Quick adjust settings after a capture.

Show EV 23

- **Yes** • No

Allows the display of EV settings on the grip display.

Yes enables the display.

No disables the display.

Show ISO 24

- **Yes** • No

Allows the display of ISO settings on the grip display

Yes enables the display.

No disables the display.

Bracket param. in Manual 25

- **Shutter speed** • Aperture

Selects either the shutter speed or the aperture as the parameter which changes in a bracketing sequence when in Manual exposure mode.

Shutter speed selects changes in shutter speed.

Aperture selects changes in aperture settings.

 <p>Exit Save 26 < Aperture ctrl. in Manual > Front wheel Custom options</p>	<p>Aperture control in Manual 26</p> <ul style="list-style-type: none"> • Front wheel • Rear wheel <p>Selects which control wheel changes the aperture setting when in Manual exposure mode.</p> <p>Front wheel selects the front control wheel to change the aperture setting.</p> <p>Rear wheel selects the rear control wheel to change the aperture setting.</p>	 <p>Exit Save 31 < True Focus in AF-S > Off Custom options</p>	<p>True Focus in AF-S 31</p> <ul style="list-style-type: none"> • Off • on <p>Re-assigns half press of shutter release button to activate True Focus function instead of standard automatic focus (single)</p>
 <p>Exit Save 27 < Low flash warning > On Custom options</p>	<p>Low flash warning 27</p> <ul style="list-style-type: none"> • On • Off <p>Controls the display of the 'Low flash' warning message and triangle.</p> <p>ON enables the function.</p> <p>OFF disables the function.</p>	 <p>Exit Save 32 < Always return mirror > No Custom options</p>	<p>Always return mirror 32</p> <ul style="list-style-type: none"> • No • Yes <p>Automatically lowers mirror again for viewing at the end of every mirror-up sequence.</p>
 <p>Exit Save 28 < Interval timer initial delay > None Custom options</p>	<p>Interval timer initial delay 28</p> <ul style="list-style-type: none"> • None • 2s • 10s • 60s • Interval time <p>Allows an initial delay before the first capture of an interval timer function operation.</p>	 <p>Exit Save 33 < AE-lock at halfpress > Off Custom options</p>	<p>AE lock at half press 33</p> <ul style="list-style-type: none"> • Off • On <p>Allows access to AE-lock without having to use customizable button assigned to other required functions.</p>
 <p>Exit Save 29 < Aperture indication > Normal Custom options</p>	<p>Aperture indication 29</p> <ul style="list-style-type: none"> • Normal • Light meter <p>Allows choice of aperture indication display (in Manual mode only).</p> <p>Normal selects conventional display (f5.6, f8, etc)</p> <p>Light meter selects 'light meter' type display (f5.6⁰, f8.5, etc)</p>	 <p>Exit Save 34 < Hide B/T-mode > Off Custom options</p>	<p>Hide B/T mode 34</p> <ul style="list-style-type: none"> • Off • On <p>Hides access to B and T shutter speeds allowing smoother transition from 1s to 1.4s when making shutter speed changes.</p>
 <p>Exit Save 30 < Extra mirror delay > 50 ms Custom options</p>	<p>Extra mirror-delay 30</p> <ul style="list-style-type: none"> • 50 ms • 100 ms • 200 ms • None • 25 ms <p>Extends the delay period between the mirror being raised and the opening of the lens shutter thereby reducing the negative effect of vibration on longer exposure times.</p>		



Hasselblad A/S
Hejrevej 30, DK - 2400 Copenhagen,
Denmark

Victor Hasselblad AB
Box 220, SE - 401 23 Göteborg,
Sweden