

4CH DVR

Quick Start Guide



- 1. Packing.....P.2**
- 2. Hard Disk Installation.....P.3**
- 3. DVD-RW Installation.....P.4**
- 4. Front Panel Controls.....P.6**
- 5. Rear Panel Connectors.....P.7**

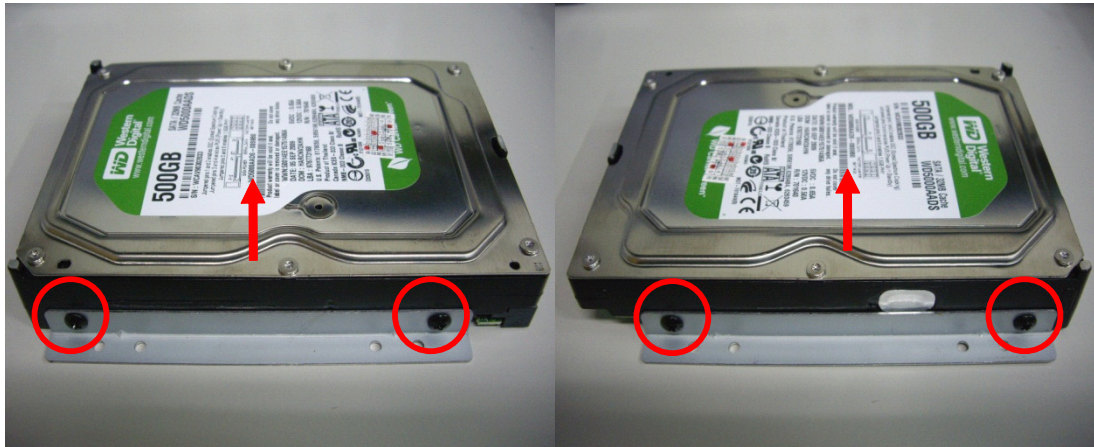
- 1. DVR**
- 2. Quick Start**
- 3. IR Remote Control** *Pressed "DVR1" Button before use
- 4. Battery**
- 5. CD**
- 6. Hard Disk Mount**
- 7. Screws**
- 8. IDE to SATA Power Cord**
- 9. Power Cord**
- 10. SATA Cord**

Note: Standard shipping products do not include HDD

2

HARD DISK INSTALATION

Step 1) Fix the HDD to rack mount with the screws as indicated.



Step 2) Place the HDD on the HDD plate and screw it as indicated.



Step 3) Connect the power and the SATA cables as indicated.



Note: After installation, please initialize Hard Disk before starting to record. For more detailed information, please check out User Manual 4-9 System Tools for reference.

3

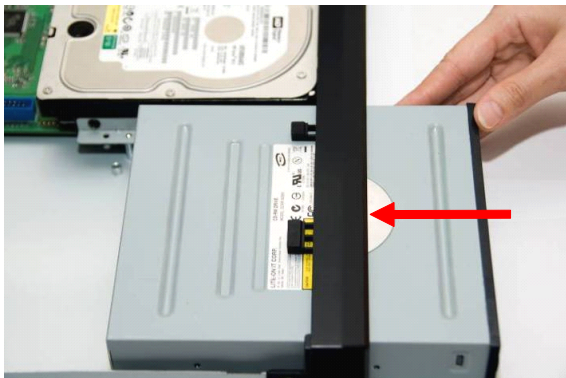
DVD-RW INSTALATION

DVD-RW Installation (Standard shipping products do not include HDD and DVD-RW)

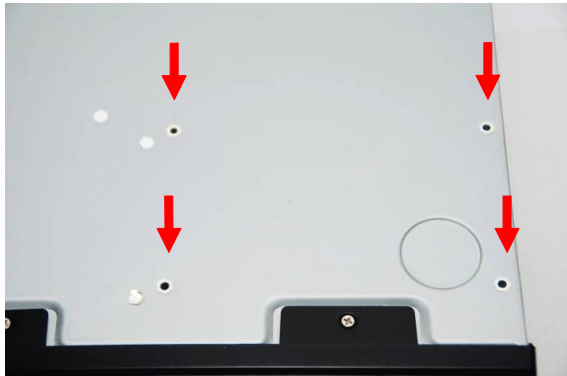
Step 1: Remove the front cover from DVR.



Step 2: Put the DVD-RW into the unit as indicated.



Step 3:Put DVR bottom up, screw to fix the DVD-RW as indicated.

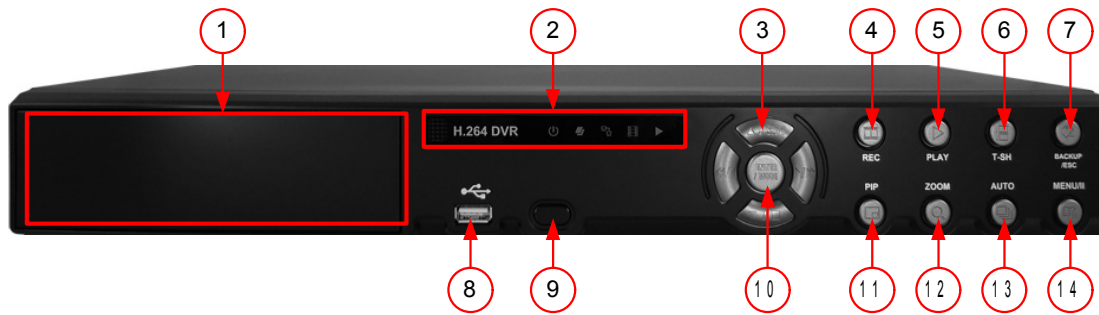


Step 4:Connect the power and the flat cables as indicated.



4

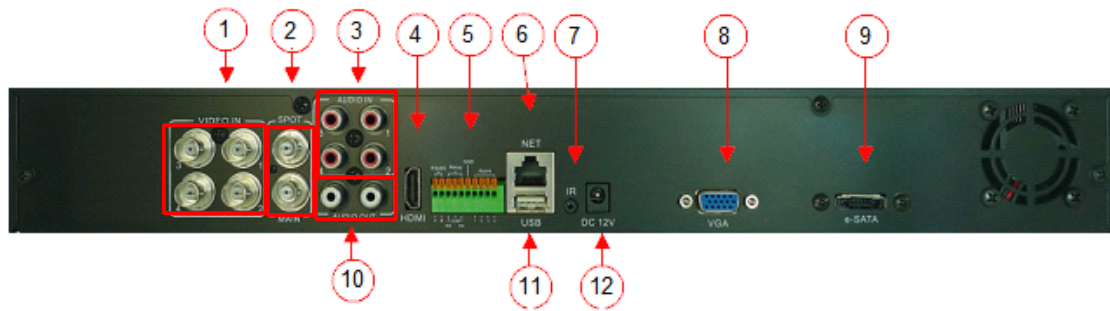
FRONT PANEL CONTROLS



Control Keys	Description
1. DVD Writer	Optional DVD-RW backup device.
2. LED Display (From left to right)	<p>Power: Power is on.</p> <p>HDD: Hard disk is in use.</p> <p>LAN: Connected to the internet <i>(in red)</i>: Remote user logged in.</p> <p>REC: Recording.</p> <p>PLAY: Playing back.</p>
3. Arrow Keys	<p>▼ / ■ In SETUP mode, press to move cursor down. In PLAYBACK mode, press to stop playing back.</p> <p>▲ / SLOW In SETUP mode, press to move cursor up. In PLAYBACK mode, press to slow down.</p> <p>► / ►► In SETUP mode, press to increase value. In PLAYBACK mode press to play forwards.</p> <p>◀ / ◀◀ In SETUP mode, press to reduce value. In PLAYBACK mode, press to play rewind.</p>
4. REC	Start or stop recording.
5. PLAY	Play back in normal speed.
6. T-SH	Display the search menu.
7. BACKUP/ESC	In LIVE mode, press to display the BACKUP menu. In SETUP mode, press to return to previous page.
8. USB 2.0 Port	Port for USB external devices (USB flash drive devices use, the mouse behind the back of the USB ports installed)..
9. IR Sensor	Input sensor for the remote control.
10. ENTER / MODE	In SETUP mode, press to enter values. In PLAYBACK mode, switch between full, quad, 9-channel, 16-channel display in order.
11. PIP	In LIVE mode, display with picture in picture format.
12. ZOOM	In LIVE or PLAYBACK mode, enlarge the display of a channel.
13. AUTO	Auto Sequence display.
14. MENU / II	In LIVE mode, press to display menu. In PLAYBACK mode, press to pause playback.

5

REAR PANEL CONNECTORS



1. VIDEO INPUT	Video input port for cameras, 4 in total
2. VIDEO OUT	CVBS Video output port, 2 in total. One is the main CVBS output and the other is the SPORT CVBS output.
3. AUDIO INPUT	Audio input port for video input, 4 in total. One can be assigned for 2-way audio
4. HDMI	HDMI port
5. EXTERNAL I/O	External I/O port and alarm input
6. LAN	Network port
7. IR	IR extension cable jack.
8. VGA	VGA port
9. eSATA	External SATA port for expanding recording space
10. AUDIO OUT	RCA output port for audio signal, 2 in total
11. USB	USB port
12. Power Socket	Socket for power adapter