

DRUMTRACKERTM
The Complete Cradle to Grave Solution

DrumTracker IITM

Web User Interface

**User's
Manual**



SYSTEM OVERVIEW

DrumTracker II has been designed to collect, compile, store, and disseminate information about closed loop containers including all current and past ownership, type and accessories, locations, ladings, status, reconditioning, recertifying, weight, and ultimate recycling. The system is web based to provide immediate up-to-the-minute information from any Internet connected device. All data is secure with fully encrypted passwords and other security features similar to your bank.

This user manual will help you make the most of your DrumTracker II experience. You will find it most helpful when trying to utilize some of the systems more complicated features.

TABLE OF CONTENTS

Definitions.....	3
Logging On	4
Session Expiration	7
My Location.....	8
My Containers.....	19
Edit Container	21
Find/Add Affiliate Location	25
Select Company	28
Birth Container.....	30
Manage User	38
My User Account	43
Company Manage	44
Manage Company Authorization	48
Manage Drum Type	51
Manage Content	56
Logout.....	60

Edit Container

Clicking on the <Edit> button to the left of the Barcode on either the My Location or My Containers page will bring up the Edit Container popup screen:

The screenshot shows a web browser window titled "Edit Container -- Webpage Dialog". The URL is http://206.117.136.45/tool/drum_pop.pl?__popup=__popup_drum_edit&session_id=bcfosazjrxmzamn&drum_id=104. The page has a title bar with "Edit Container" and a close button. Below the title bar is a "Reload" button and an "Update Container" button. The main content is divided into several sections:

- CONTAINER:** Barcode: 789, Color: Black, Type Name: LittleTub, Type Description: Small Size, Tare: 5 Lbs, Material: Metal, Capacity: 15 Gallon Drum (15 Gallons, 56.79 Liters). Current Status: FILLED.
- STATUS:** Radio buttons for Filled (selected), Reconditioned, Dirty/Empty, and Dirty/Excess.
- CONTENT:** ID: 3, Private Name: THX-1138, Public Name: Organic Pesticide, Chem.Market: Food, Density: 9 Lbs/Gal, Category: 2, Manufacturer: Jango Chemical, Lot Number: 1. Fill weight: 4000 (radio buttons for Lbs and Kg, Kg selected). A "Check Volume" button is next to the fill weight.
- CURRENT LOCATION:** Name: Anakin Industries South Plant, Address: New York, NY 23433. Buttons: Select, Clear.
- FROM LOCATION:** Name: Anakin Industries North Plant, Address: New York, NY 23222. Buttons: Select, Clear.
- TO LOCATION:** Name: (empty), Address: (empty). Buttons: Select, Clear.
- TRACKER:** A table with columns: Time, Status, Content, Location, From, To.

Time	Status	Content	Location	From	To
08/29/2006 11:48	FILLED	THX-1138	Anakin Industries South Plant New York, NY		
08/29/2006 11:37	NEW		Anakin Industries North Plant New York, NY		

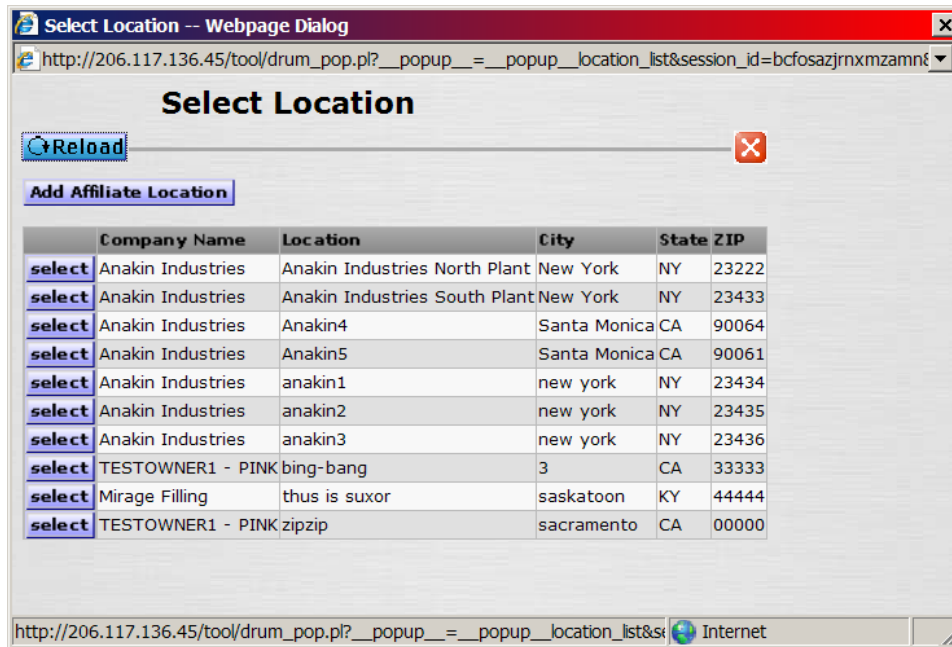
The browser's status bar shows "Internet".

The Edit Container screen allows the user to edit a container and view DrumTracker history.

The first section in the top left is titled "Container" and is not editable. This data includes the Barcode, color, type name and description, tare weight, container material and capacity, and shows the current status.

The second through fourth sections show the "Current Location," "From Location," and "To Location" of the Container. These are where the Container currently is, where it came from, and where it is being shipped to. When it is at a location you generally have where it came from and where it currently is located. When it is being shipped, it generally shows where it came from and where it is going to, but shows no current location.

To change any of these three Locations, Click on the <Select> button to the right of the appropriate heading. A popup permitting you to select the Location will show:



The Locations listed will be those with which you are Affiliated (See Add Affiliate Location) or to which you have previously shipped a container. Click on the <Select> button to the left of the Location to put that Location into the Container's screen.

Click on <Clear> to remove any current Location information from the Container's screen.

By changing the Location data on the screen, then Clicking on the <Update Container> button in the upper right of the screen, the database is updated and the container's Location is adjusted.

The bottom section of the Edit Container screen shows the tracking history of the Container. This section shows where and when the Container was birthed, sent to, received from, filled, emptied, and reconditioned.

The upper right section shows the current Status and allows the User to change the Status by simply clicking on the radio button to the left of the appropriate Status. To change the Status to Filled, use the lower right section titled "Content." [A "radio button" for those of you too young to remember car radios with push buttons, are the little white dots to the left of a list. Only one can be selected at any time. When you click on any one, any previously selected will be unselected. The selected one is indicated by a black dot.]

The Lot Number and Fill weight may be edited directly on the Edit Container screen. The Contents and its descriptors are selected by Clicking the <Select> button to the right of the "Content" title. Clicking the <Select> button gives the User a Select Content popup screen:




The Contents which are on this list are those created by the Administrator by Clicking on “Manage Content” on the lower left of the Main screen. See the chapter on Manage Content.

Clicking on <Select> will insert the data for the selected contents into the Container’s screen.

After the changes and selections are made, the User Clicks on the <Update Container> button at the upper right of the screen to enter the new data into the system. The Changes will either be confirmed with a Green check, or not confirmed as shown by a Red “X” at the top of the screen:

[Reload](#)
✖

 Updated Drum

CONTAINER

Barcode: **789**
 Color: **Black**
 Type Name: **LittleTub**
 Type Description: **Small Size**
 Tare: **5 Lbs**
 Material: **Metal**
 Capacity: **15 Gallon Drum**
 ↳ **15 Gallons**
 ↳ **56.79 Liters**

Current Status: **FILLED**

CURRENT LOCATION [Select](#) [Clear](#)

Name: **Anakin Industries South Plant**
 Address: **New York, NY 23433**

FROM LOCATION [Select](#) [Clear](#)

Name: **Anakin Industries North Plant**
 Address: **New York, NY 23222**

TO LOCATION [Select](#) [Clear](#)

Name:
 Address:

STATUS

Filled
 Reconditioned
 Dirty/Empty
 Dirty/Excess

CONTENT [Select](#)

ID: **3**
 Private Name: **THX-1138**
 Public Name: **Organic Pesticide**
 Chem.Market: **Food**
 Density: **9 Lbs/Gal**
 Category: **2**
 Manufacturer: **Jango Chemical**
 Lot Number:

Fill weight: Lbs [Check Volume](#)
 Kg

[Update Container](#)

TRACKER

Time	Status	Content	Location	From	To
08/29/2006 11:48	FILLED	THX-1138	Anakin Industries South Plant New York, NY		
09/12/2007 17:38	FILLED	THX-1138	Anakin Industries South Plant New York, NY	Anakin Industries North Plant New York, NY	
08/29/2006 11:37	NEW		Anakin Industries North Plant New York, NY		

http://206.117.136.45/tool/drum_pop.pl
Internet

To remove a Container from the system, an authorized User can Click on the <Kill Container> button in the upper right of the screen.

Find/Add Affiliate Location

Clicking on the <Add Affiliate Location> button on the Select Location screen brings up the Find/Add Affiliate Location popup screen:

Find/Add Affiliate Location

Reload

STEP 1 : SELECT COMPANY

COMPANY **Select**

ID:
Name:
City:
State:
ZIP:

STEP 2 : SPECIFY LOCATION INFO

Location Name:
Address1:
Address2:
City:
State:
ZIP:

STEP 2 : SPECIFY LOCATION TYPE

Container manufacturer
 Reconditioner
 Content manufacturer
 Filler
 Warehouse
 Dealer
 Consumer

Find Location

http://206.117.136.45/tool/drum_pop.pl

Internet

This screen is intended to be a 3-step process. First, Select a Company by Clicking on the <Select> button to the right of “Company.” See Select Company chapter for specific help with the Select Company screen.

Once a Company has been selected, that Company’s information will be filled in:

Find/Add Affiliate Location

Reload

STEP 1 : SELECT COMPANY

COMPANY

ID: 966
 Name: TEST 543
 City: Salt Lake City
 State: UT
 ZIP: 64322

STEP 2 : SPECIFY LOCATION INFO

Location Name:
 Address1:
 Address2:
 City:
 State:
 ZIP:

STEP 2 : SPECIFY LOCATION TYPE

Container manufacturer
 Reconditioner
 Content manufacturer
 Filler
 Warehouse
 Dealer
 Consumer

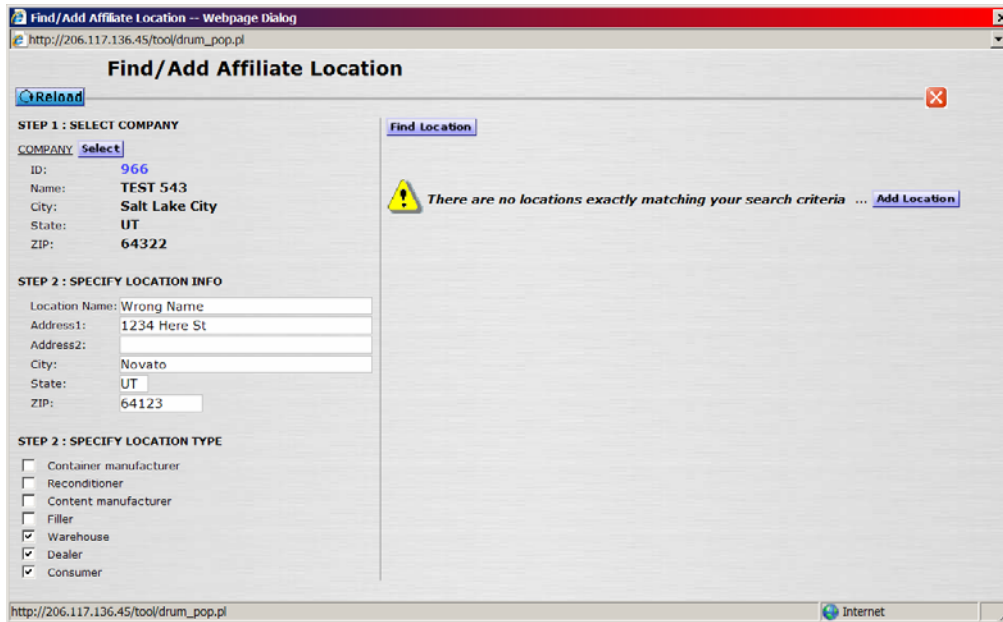
Find Location

http://206.117.136.45/tool/drum_pop.pl Internet

The second step is to fill in the Location Name, Address, City, State, and Zip for the Location you want to enter. You cannot guess these items. You must enter the exact information or else the system will not permit you to Affiliate with the Location.

You then should check the appropriate boxes specifying what type of Location this is.

Then Click the <Find Location> button in the upper right of the screen. If successful, the Location will be selected and you will return to your previous screen. If unsuccessful, you will be told that there are no matching Locations and given the option to add a new Location:

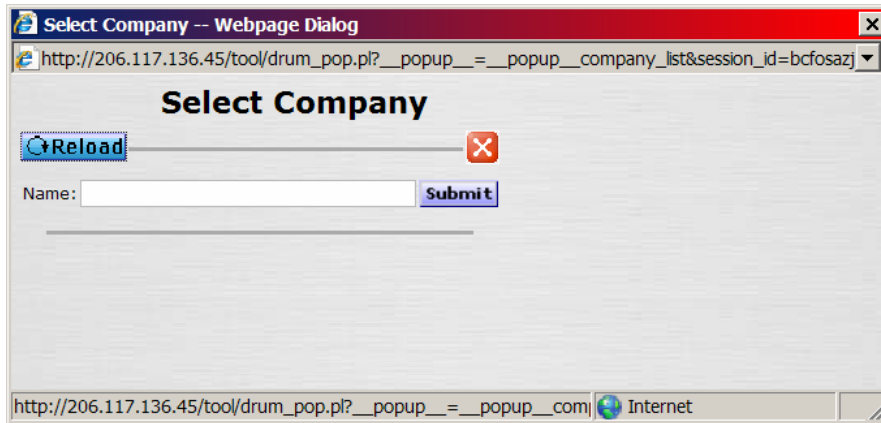


If you Click on the <Add Location>, the data that you have entered in the first three step will be used to create a new Location file, and that information will be selected and entered into the previous screen as your selected Location. Please do not use the <Add Location> button unless you are absolutely certain that all of the information you entered in the first steps are correct.

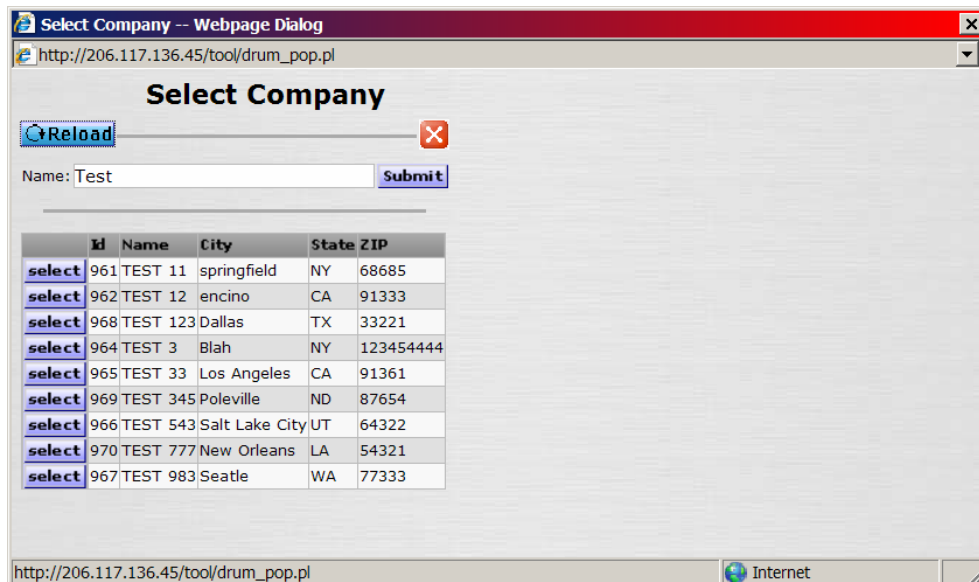
If you are not certain that you are ready to add a new Location, please Click on the red “X” in the upper right of the screen to close this screen without selecting a Location.

Select Company

The Select Company screen is used to select a particular Company from a list of Companies and return the User to the previous screen with that Company entered. The screen first presents asking for a string to search for:



In the white area to the right of “Name:” enter the portion of the name to search for. Then Click on the <Submit> button to perform the search. This search uses “sounds like” technology so the name does not have to be spelled exactly. For example, Companies named “Smith,” “Smyth,” and “Smouth” would all be listed if the text “Smith” was entered. As another example, entering the search string “Test” yields the following list:



This list shows all of the various Companies named “Test” or containing anything like “Test.”

To Select the appropriate Company, Click on the <Select> button to the left of the Company name.

If your search yields no matching Companies, your screen will look like:

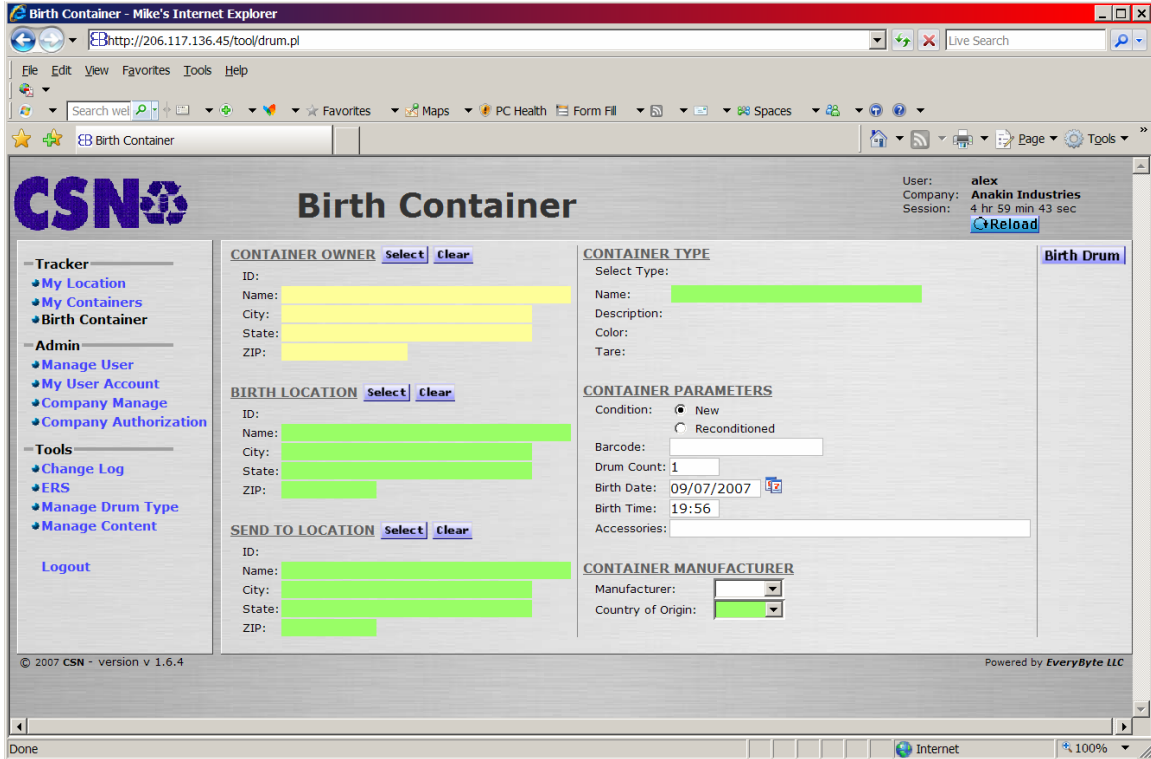


Input another search string into the white box to the right of “Name:” and again Click on the <Submit> button, hopefully this time finding the Company you are looking for.

If after searching for all parts of the Company name, the Company still is not listed, please call Customer Service for assistance.

Birth Container

Click on <Birth Container> under the top left heading of “Tracker.” You will see the “Birth Container” screen:



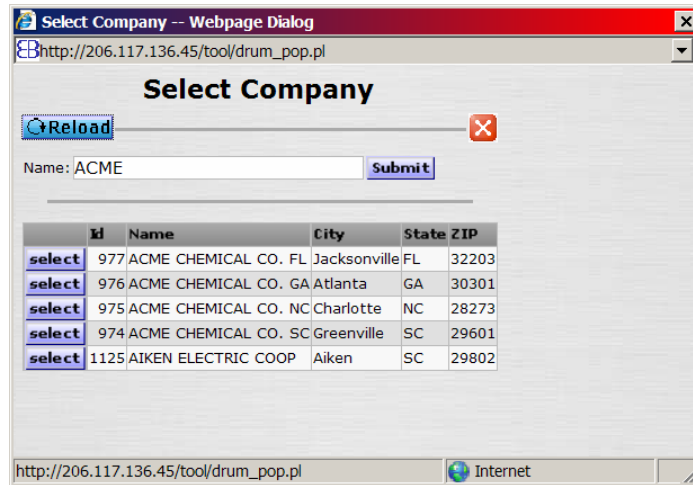
The center area is divided into three columns. The left column contains the Owner and location information; the center column the container information; and the right column contains the buttons for actions to be taken on the data.

At the top of the left column of the center area, Click on the button just to the right of the title “Container Owner” marked <Select>. This will bring up the “Select Company” pop-up screen:

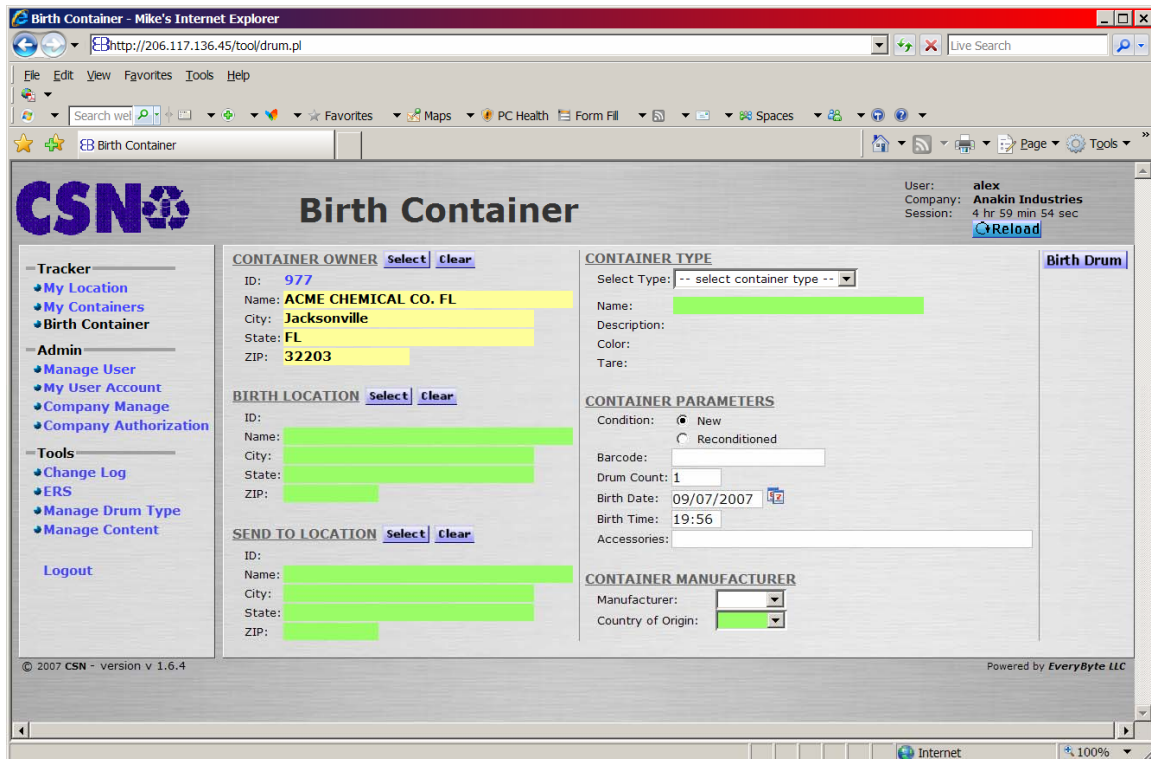


In the white box in the center of the pop-up, type some of the company's name. For example, when searching for Acme Chemical Co., Inc. you only have to type "Acme" and it will list all of the companies with "Acme" in their name. Also, spelling is not too important – the system will search names close to what you typed.

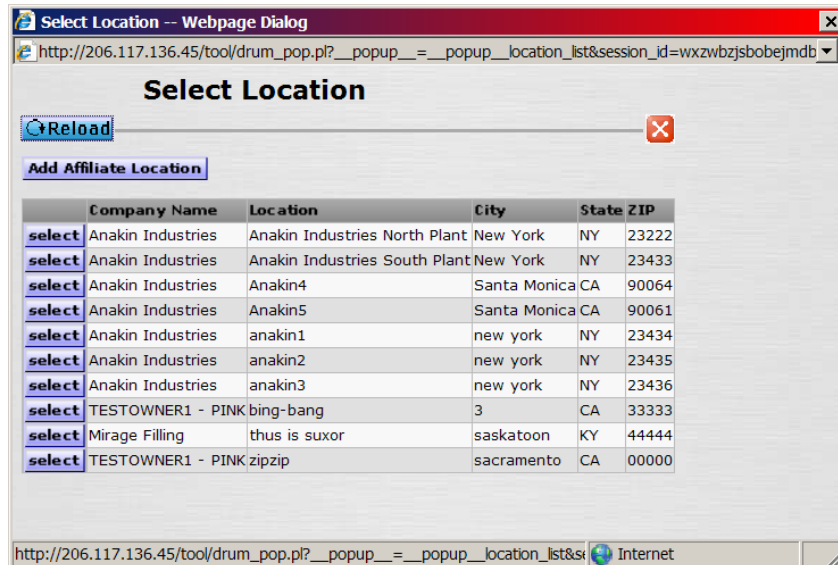
Click <Submit> to have the system search for the companies with similar names. The list of companies with similar names will be shown at the bottom of the screen:



Determine which of the companies listed is the one that will own the containers to be birthed. Click on the <Select> button just to the left of the owner company. The data for that company will now be shown on the Birth Container screen.



At the middle of the left column of the center area, Click on the button just to the right of the title “Birth Location” marked <Select>. This will bring up the “Select Location” pop-up screen:



The locations which have previously been used are listed. If the location where the containers will be made/reconditioned is not listed already, then Click on the <Add Affiliate Location> button. See “Find/Add Affiliate Location” for help with entering a new location.

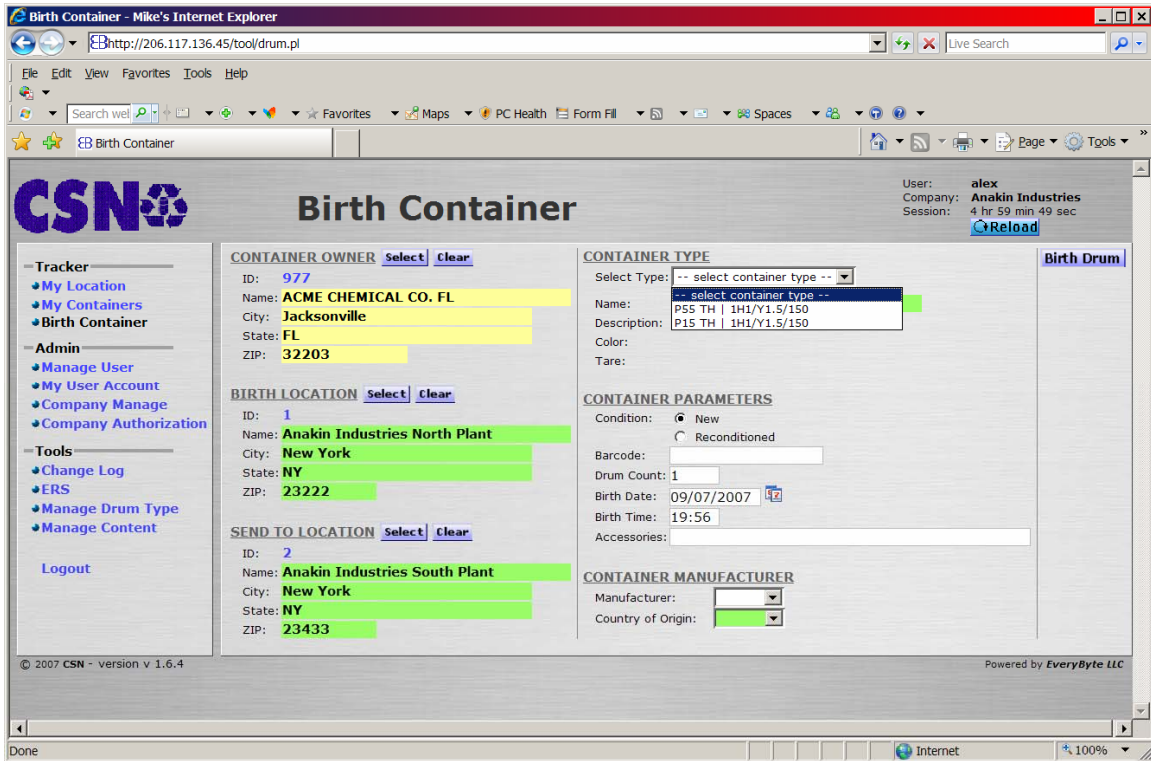
Determine which of the locations listed is the one that will be making/reconditioning the containers being birthed. Click on the <Select> button just to the left of the location. The data for that location will now be shown on the Birth Container screen.

At the bottom of the left column of the center area, Click on the button just to the right of the title “Send To Location” marked <Select>. This will bring up the “Select Location” pop-up screen as before.

The locations which have previously been used are listed. If the location where the containers will be made/reconditioned is not listed already, then Click on the <Add Affiliate Location> button. See “Find/Add Affiliate Location” for help with entering a new location.

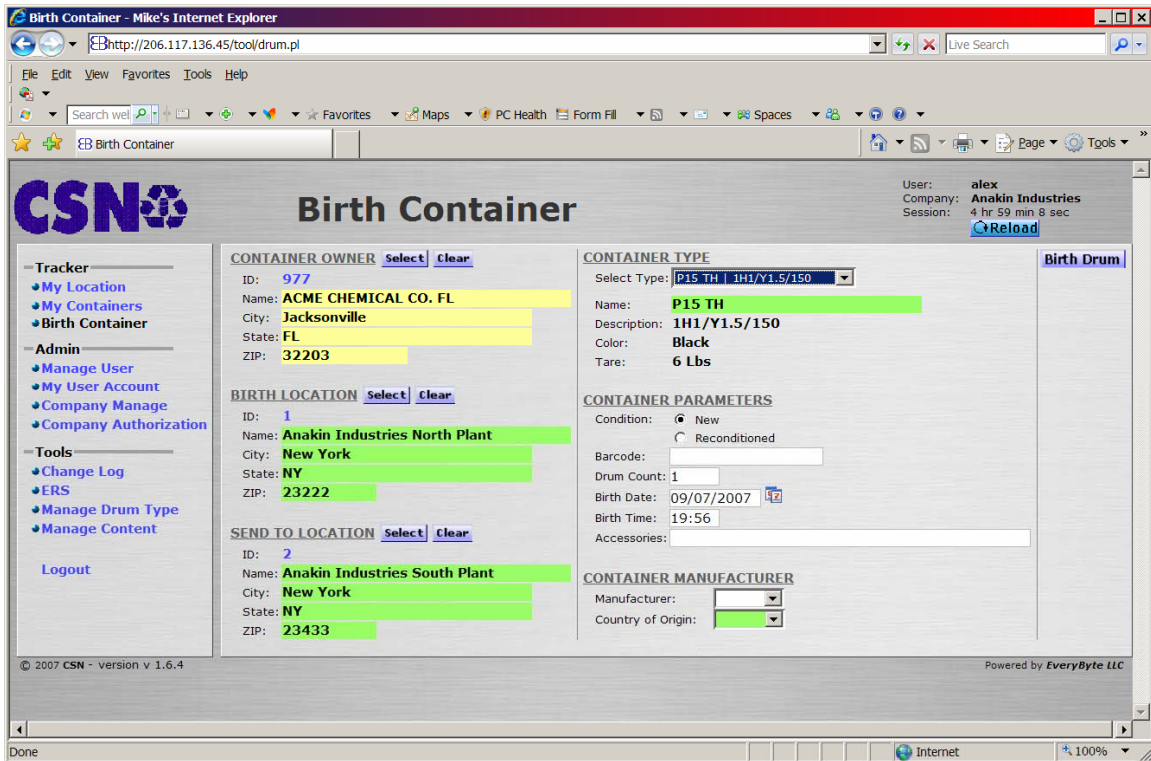
Determine which of the locations listed is the one that will be receiving the containers being birthed. Click on the <Select> button just to the left of the location. The data for that location will now be shown on the Birth Container screen.

At the top of the middle column of the center area, Click on the down arrow on the right of the white box <--select container type-->. A list of container types for that owner are listed.



If the specific container type is not listed, please contact the owner to have them input the proper container type. See “Manage Drum Type.”

Click on the appropriate container type in the list. The data for that container type will now be shown on the Birth Container screen.



In the center of the center area, the Container Parameters are entered. Click on either the button in front of “New” or the button in front of “Reconditioned.”

Type in the bar code in the white area to the right of “Barcode:” If you are birthing more than one container, the bar code entered should be the first one in the series. i.e. If you are birthing four containers numbered 105, 106, 107, and 108, just enter 105.

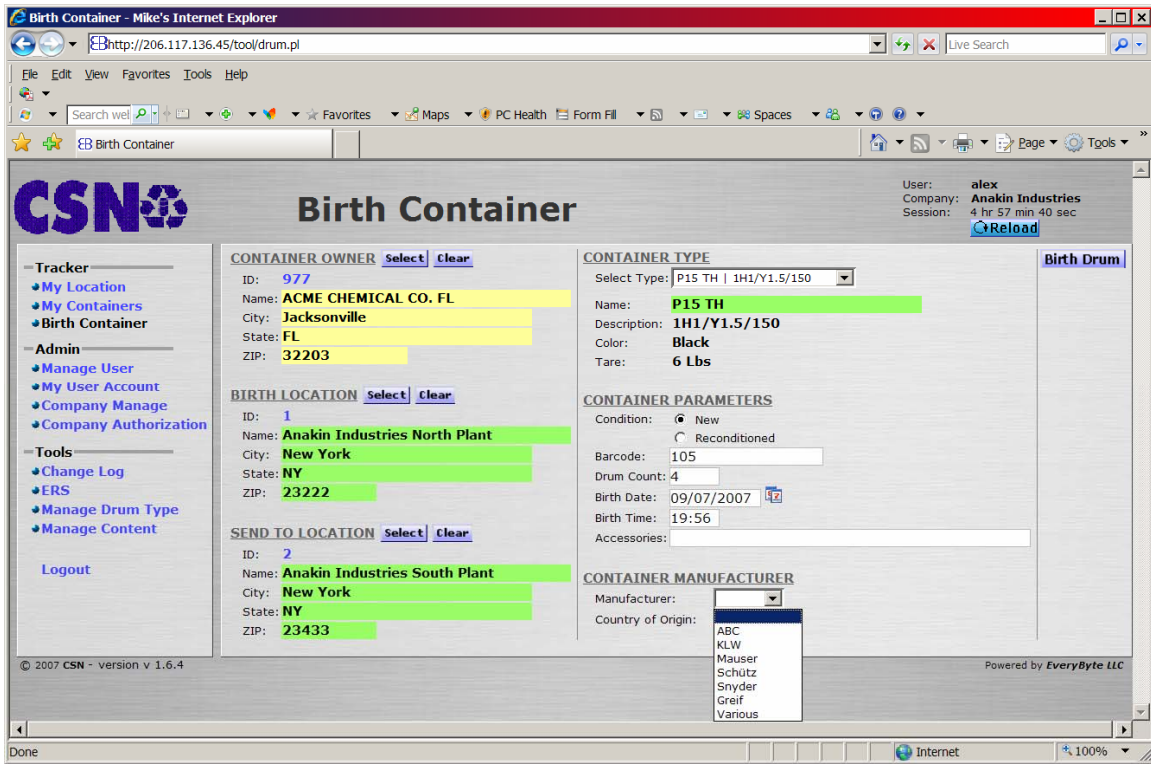
Type in the number of containers being birthed in the white area just to the right of “Drum Count:” This is the number (quantity) of containers being birthed with the first bar code being the number typed above and every bar code being one more than the previous bar code number.

Enter the date of manufacture/reconditioning in the white area just to the right of “Birth Date:” This field defaults to the current date if you do not change it.

Enter the time of manufacture/reconditioning in the white area just to the right of “Birth Time:” This field defaults to the current time if you do not change it.

Type in any accessories in the white area just to the right of “Accessories:”

At the bottom of the middle column of the center area, Click on the down arrow on the right of the white box to the right of “Manufacturer:” A list of manufacturers are listed.



If the appropriate manufacturer is not listed, please contact DrumTracker support.

Click on the appropriate manufacturer.

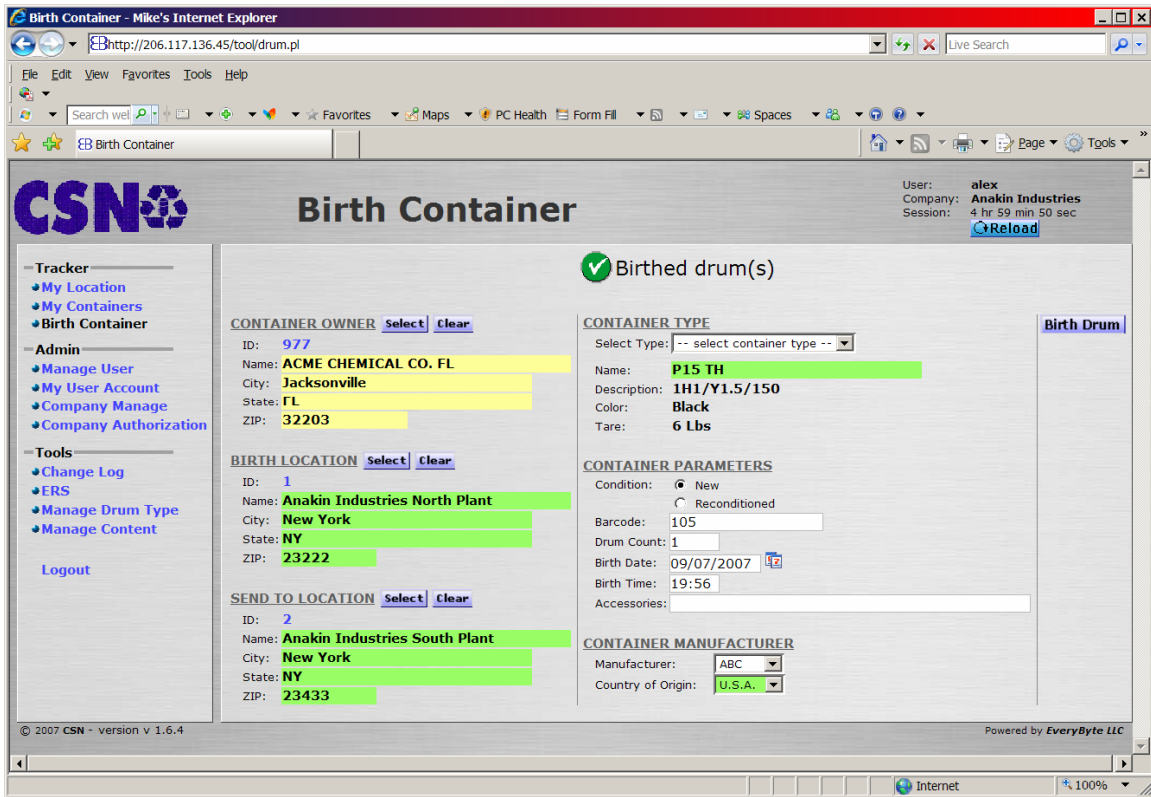
At the bottom of the middle column of the center area, Click on the down arrow on the right of the white box to the right of “Country of Origin:” A list of countries supported are listed.

If the appropriate country is not listed, please contact DrumTracker support.

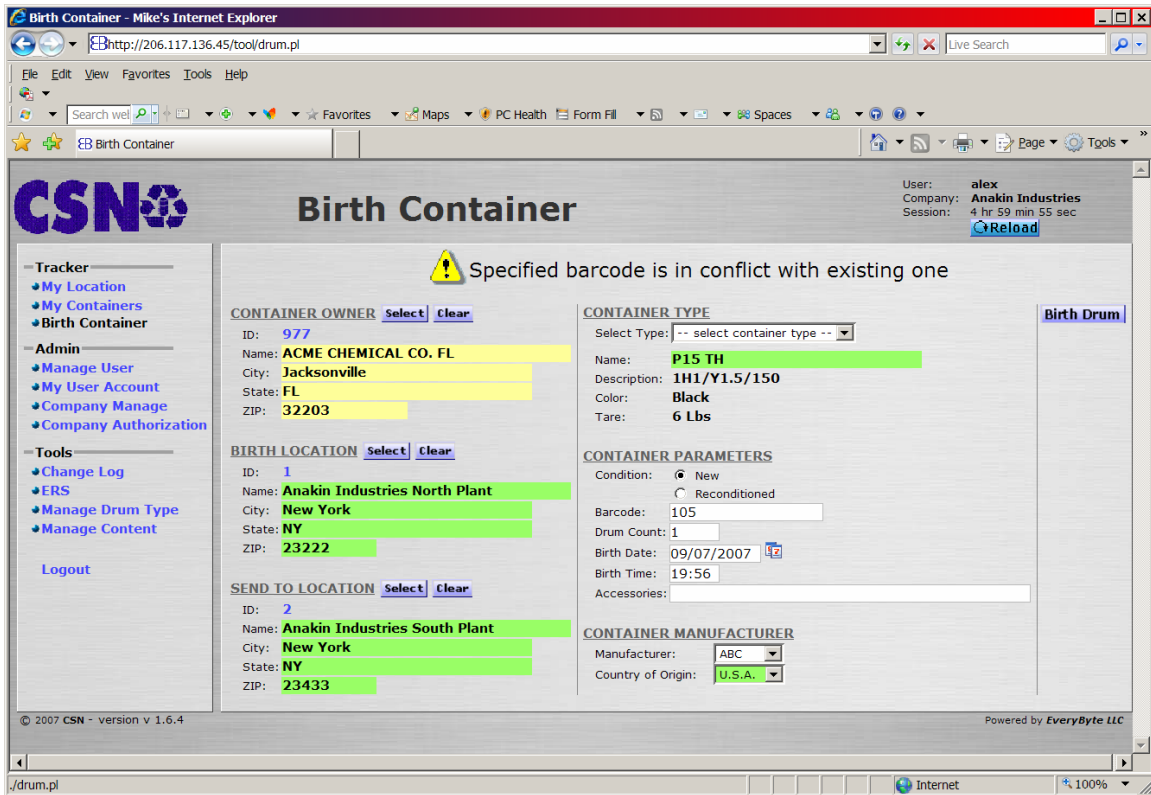
Click on the appropriate country.

Review all of the information on the screen. Once submitted, the information cannot be removed.

At the top of the right column of the center area, Click on the <Birth Drum> button. In a few moments you will receive a success confirmation or a failure reason. A confirmation of success look like:



and a notification of Failure and the reason why looks like:



The most common reason for failure is entering a bar code that has already been used (as in the example above). If this occurs, please check the number and submit again. If you feel you have received this error inappropriately, please contact DrumTracker support.

You can now birth additional containers, or click on any of the links on the left to do other activities.