

ZABER

LHM Product
User's Manual
Firmware 5.00 and up

Last Update: December 10 2015
Visit www.zaber.com/wiki for more recent updates.

Zaber Technologies Inc.
#2 - 605 West Kent Ave. N.
Vancouver, British Columbia
Canada, V6P 6T7



Table of Contents

<u>Disclaimer</u>	1
<u>Precautions</u>	2
<u>Installation</u>	3
<u>Physical Installation</u>	3
<u>Mounting</u>	3
<u>Grounding</u>	3
<u>Maintenance</u>	4
<u>Operation</u>	5
<u>Pinout for D-sub 15 Connectors (A-series and X-Series controllers and peripherals)</u>	5
<u>Alternate Controllers</u>	6
<u>Motor</u>	6
<u>Home Sensor Wiring</u>	6
<u>Warranty and Repair</u>	8
<u>Standard products</u>	8
<u>Custom products</u>	8
<u>How to return products</u>	8
<u>Email Updates</u>	9
<u>Contact Information</u>	10
<u>Comparison - LHM Series</u>	12

Disclaimer

Zaber's devices are not intended for use in any critical medical, aviation, or military applications or situations where a product's use or failure could cause personal injury, death, or damage to property. Zaber disclaims any and all liability for injury or other damages resulting from the use of our products.

Precautions

Zaber's motion control devices are precision instruments and must be handled with care. In particular, moving parts must be treated with care. Avoid axial loads in excess of the rated thrust load, axial and radial impact, dust and other contaminants and damage to the leadscrew thread. These will reduce the performance of the device below stated specifications.

Installation

Physical Installation

Mounting

There are several options available for mounting Zaber stages. Use the mounting holes in the bottom to mount to a surface or to another stage. You might have to move the carriage to access the bottom mounting holes. Some stages have mounting holes in the end plates for mounting vertically. Mounting screws are included with most stages.

Caution: Some stages have threaded through-holes in the top mounting plate of the carriage. Be sure not to install mounting screws too deep, causing them to interfere with inside parts of the stage.

LHM series stages can be mounted to a standard metric or imperial breadboard with our [AP101 adaptor plates](#).

Grounding

To prevent damage to the device due to static buildup, the device should be properly grounded.

Failure to ground the unit may result in the unit shutting down unexpectedly or ceasing to communicate with the computer. This problem can be minimized by not touching the unit during operation. If the unit fails due to static discharge, unplugging it and plugging it back in or sending a Restore Settings command will usually fix the problem.

Most Zaber devices are grounded via the shield wire of the data cables. This should normally provide a path to ground via the computer. For units which are being used without a computer, a ground lead should be connected to the shield of one of the data cables.

Maintenance

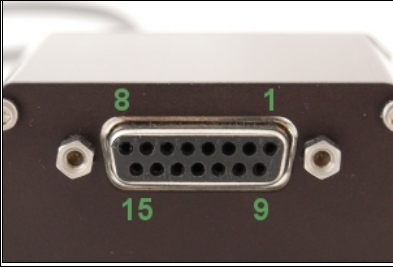
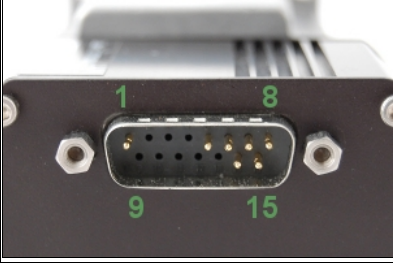

The LHM stages do not need regularly scheduled maintenance, but can be lubricated if performance appears reduced or a noise is produced by the stage. We recommend Super Lube Bottle Oil with Syncolon (PTFE) Lubricant (Product number #51004). Super Lube oil can be applied to the lead screw and to the running surface (silver base) of the stage.

Other lubricants can be used as long as they are compatible with Acetal (Delrin).

Operation

The LHM-T3 stages are designed to be controlled with any of Zaber's X-Series or A-Series [Stepper Motor Controllers](#). Zaber's controllers and peripherals are designed for ease of use when used together. Optimal settings for each peripheral (such as the default current, speed, acceleration, and limit settings) can be loaded by setting the [peripheralid \(T:66\)](#) on the controller. The peripheral ID is listed as the ID on the peripheral's label. A list of IDs is also available on the [ID Mapping](#) page. For more information on device operation, refer to the controller's user manual.

Pinout for D-sub 15 Connectors (A-series and X-Series controllers and peripherals)

A- or X-series controller (female)	
T3 Peripheral (male)	
T4 Peripheral (male)	

Pin #	Function
1	+5V
2	Encoder Error *****
3	<i>reserved</i>
4	Away Sensor ***
5	Home Sensor
6	Ground
7	Motor B1
8	Motor A1
9	+5V *
10	Encoder A *
11	Encoder B *

12	Encoder Index **
13	Ground *
14	Motor B2
15	Motor A2

* *encoder embedded peripherals only*

** *devices with encoders with index only*

*** *devices with away sensors only*

**** *devices with linear or direct-reading encoders only*

Alternate Controllers

The device may be controlled by any 2-phase stepper motor controller with home sensor input. **Warning: Operating the unit without correctly wiring up the home sensor can cause permanent damage to the unit. We do not recommend using your own controller unless you are familiar with how to control a stepper motor with a hall sensor limit switch.** The following information is provided for reference only. Damage to the actuator or hall sensor due to incorrect wiring is not covered by warranty.

Motor

The LHM stage uses a size 8 stepper motor.

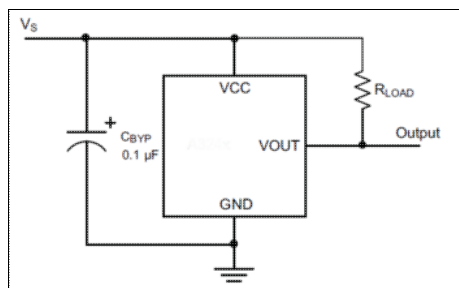
- 0.8 A / Phase
- 5.4 / phase
- 1.5 mH / phase

Home Sensor Wiring

A Hall effect sensor is mounted in the device for use as a home sensor. It is part number A1120LLHLT-T made by Allegro. [Click here for data sheet.](#) Your controller should be configured so the stage stops immediately (little deceleration) when the home sensor is triggered.

- Wire colour code:
 - ◆ 3.6-24 Vdc input - red
 - ◆ Home signal - yellow
 - ◆ Ground - black

The Hall sensor has an open-collector output. The default output is high impedance when the Hall sensor is not active. When the sensor detects a magnet, the Hall sensor pulls the output low to ground.



If you are not using a Zaber controller, ensure that your controller has a pull-up resistor on the output line of the Hall sensor as shown in the diagram. The bypass capacitor is optional, but may help to eliminate false triggering in noisy environments. The typical value for the pull-up resistor (R_{LOAD}) is 10k and for the bypass capacitor is 0.1uF to 1uF. The larger the capacitance, the better the noise filtering but the slower the response time.

Warranty and Repair

For Zaber's policies on warranty and repair, please refer to the [Ordering Policies](#)

Standard products

Standard products are any part numbers that do not contain the suffix ENG followed by a 4 digit number. Most, but not all, standard products are listed for sale on our website. All standard Zaber products are backed by a one-month satisfaction guarantee. If you are not satisfied with your purchase, we will refund your payment minus any shipping charges. Goods must be in brand new saleable condition with no marks. Zaber products are guaranteed for one year. During this period Zaber will repair any products with faults due to manufacturing defects, free of charge.

Custom products

Custom products are any part numbers containing the suffix ENG followed by a 4 digit number. Each of these products has been designed for a custom application for a particular customer. Custom products are guaranteed for one year, unless explicitly stated otherwise. During this period Zaber will repair any products with faults due to manufacturing defects, free of charge.

How to return products

Customers with devices in need of return or repair should contact Zaber to obtain an RMA form which must be filled out and sent back to us to receive an RMA number. The RMA form contains instructions for packing and returning the device. The specified RMA number must be included on the shipment to ensure timely processing.

Email Updates

If you would like to receive our periodic email newsletter including product updates and promotions, please sign up online at www.zaber.com ([news section](#)). Newsletters typically include a promotional offer worth at least \$100.

Contact Information

Contact Zaber Technologies Inc by any of the following methods:

Phone	1-604-569-3780 (direct) 1-888-276-8033 (toll free in North America)
Fax	1-604-648-8033
Mail	#2 - 605 West Kent Ave. N., Vancouver, British Columbia, Canada, V6P 6T7
Web	www.zaber.com
Email	Please visit our website for up to date email contact information.

The original instructions for this product are available at <http://www.zaber.com/wiki/Manuals/LHM>.

Specification	Value	Alternate Unit
<u>Microstep Size (Default Resolution)</u>	0.124023437 μm	
<u>Integrated Controller</u>	No	
<u>Recommended Controller</u>	<u>X-MCB1</u> (48 V) Recommended	
<u>Repeatability</u>	< 4 μm	< 0.000157 "
<u>Backlash</u>	< 30 μm	< 0.001181 "
<u>Maximum Speed</u>	65 mm/s	2.559 "/s
<u>Minimum Speed</u>	0.0012 mm/s	0.00005 "/s
<u>Speed Resolution</u>	0.0012 mm/s	0.00005 "/s
<u>Encoder Type</u>	None	
<u>Peak Thrust</u>	25 N	5.6 lb
<u>Maximum Continuous Thrust</u>	25 N	5.6 lb
<u>Maximum Centered Load</u>	50 N	11.2 lb
<u>Maximum Cantilever Load</u>	25 N-cm	35.4 oz-in
<u>Guide Type</u>	Plain bearing	
<u>Linear Motion Per Motor Rev</u>	1.5875 mm	0.062 "
<u>Motor Steps Per Rev</u>	200	
<u>Motor Type</u>	Stepper (2 phase)	
<u>Motor Rated Current</u>	600 mA/phase	
<u>Motor Winding Resistance</u>	6.5 ohms/phase	
<u>Inductance</u>	3.5 mH/phase	
<u>Motor Connection</u>	D-sub 15	
<u>Default Resolution</u>	1/64 of a step	
<u>Mechanical Drive System</u>	Lead screw	
<u>Limit or Home Sensing</u>	Magnetic hall sensor	
<u>Axes of Motion</u>	1	
<u>LED Indicators</u>	No	
<u>Mounting Interface</u>	M3 threaded holes	
<u>Vacuum Compatible</u>	No	
<u>Operating Temperature Range</u>	0 to 50 degrees C	

Contact Information

RoHS Compliant

Yes

CE Compliant

Yes

Comparison - LHM Series

<u>Part Number</u>	<u>Travel Range</u>	<u>Accuracy (unidirectional)</u>	<u>Weight</u>
<u>LHM025A-T3</u>	25.4 mm (1.000 ")	50 µm (0.001969 ")	0.30 kg
<u>LHM050A-T3</u>	50.8 mm (2.000 ")	75 µm (0.002953 ")	0.36 kg
<u>LHM100A-T3</u>	101.6 mm (4.000 ")	125 µm (0.004921 ")	0.42 kg
<u>LHM150A-T3</u>	152.4 mm (6.000 ")	175 µm (0.006890 ")	0.46 kg
<u>LHM200A-T3</u>	203.2 mm (8.000 ")	225 µm (0.008858 ")	0.52 kg