

# LINDY®

## CONNECTION PERFECTION

### USB to Serial RS232 Converter

*User Manual*

*English*

---



No. 42812

[www.lindy.com](http://www.lindy.com)

CE

FCC

Tested to Comply with  
FCC Standards  
For Home and Office Use!



## Introduction

Thank you for purchasing the LINDY USB TO Serial RS232 Converter. This converter provides a quick and easy way to connect Serial devices to your computers USB port.

The USB to Serial Converter is able to make the USB interface totally transparent to serial port peripherals from maximum compatibility.

## Package Contents

- LINDY USB to Serial Converter
- Driver CD
- This manual

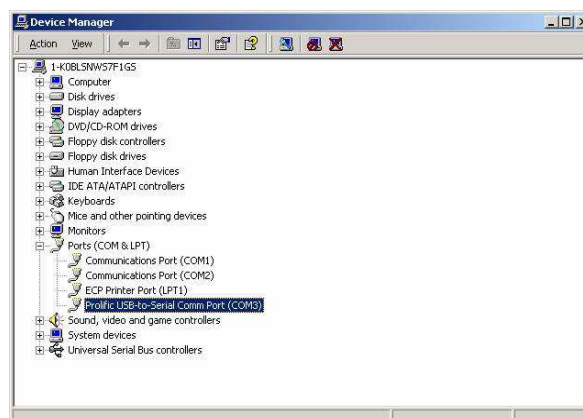
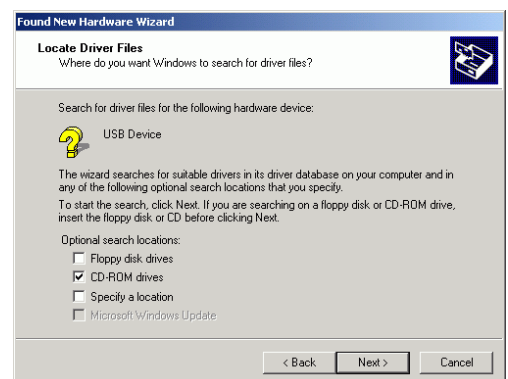
## Features

- Connects any standard Serial device to your computer's USB port
- USB 1.1 interface
- Plug & Play
- RS232 compliant, up to 128kbps
- Supports Remote Wake-up and Power Management
- USB Bus powered with no external power supply required
- No IRQ, I/O address or DMA memory address requirements
- Compatible with Windows ME/2000/XP/Vista/7/8, MAC OS 8.6 and above

## Installation

**Windows ME/2000**

1. Insert the supplied Driver CD into your CD-ROM drive and plug in the USB to Serial Converter into an available USB port. Windows will then run the **Found New Hardware Wizard** to guide you through setting up the new device. Click **Next** to continue.
  
2. Select **Search for a suitable driver for my device (recommend)** and click **Next** to continue
  
3. Tick the CD-ROM drives box and click **Next** to continue.
4. Windows will then search for the appropriate driver, once it has located it click **Next** to begin the installation.
5. Once the installation has ended click **Finish** to complete the installation.
  
6. To check the installation was successful go to **Control Panel >> System** and select the **Hardware** tab. Now click **Device Manager** and you will see a screen similar to the one below; you can see the USB to Serial Converter highlighted in the **Ports (COM & LPT)** category as **USB-to-serial Comm Port**

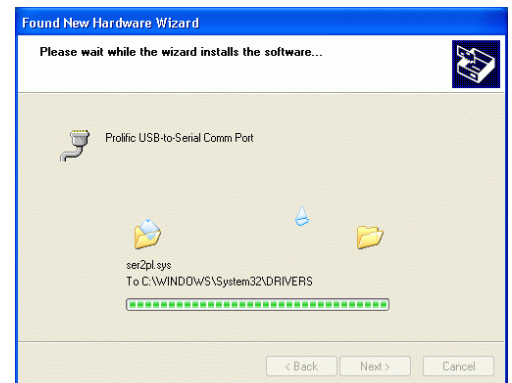


### Windows XP/Vista

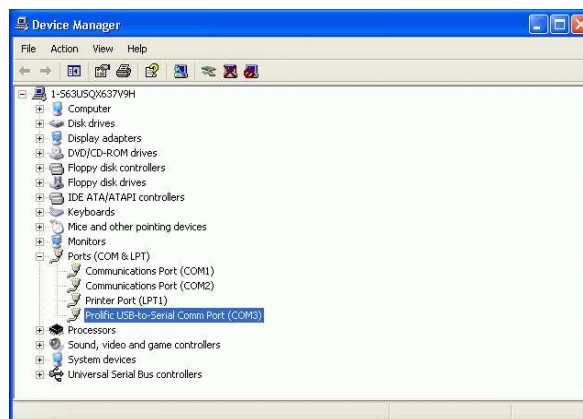
1. Insert the supplied Driver CD into your CD-ROM drive and plug in the USB to Serial Converter into an available USB port. Windows will then run the **Found New Hardware Wizard** to guide you through setting up the new device.
2. Select **Install the software automatically (Recommended)** and click **Next** to continue.



3. Windows will locate and install the driver on to your computer.
4. Once the installation has ended click **Finish** to complete the installation.



5. To check the installation was successful go to **Control Panel >> System** and select the **Hardware** tab. Now click **Device Manager** and you will see a screen similar to the one below; you can see the USB to Serial Converter highlighted in the **Ports (COM & LPT)** category as **USB-to-serial Comm Port**

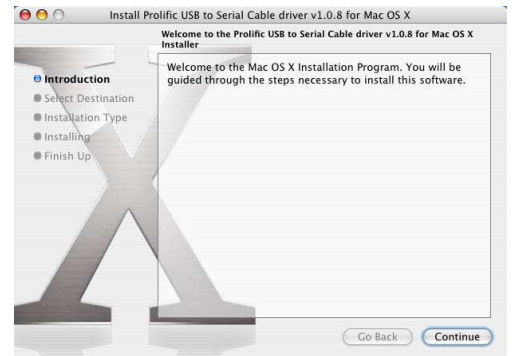


### Windows 7/8

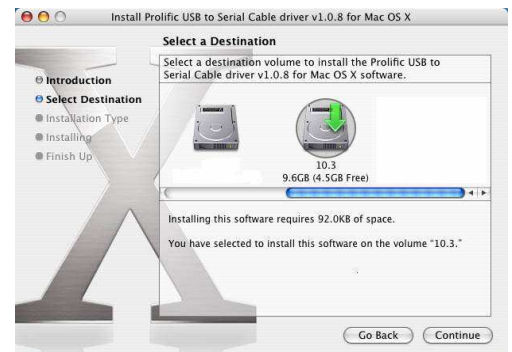
Drivers are installed automatically via Windows Update.

## MAC OS X

1. Insert the supplied Driver CD into your CD-ROM drive and copy the following file to your desktop:  
**[CD-ROM Drive]:\USB Serial Adapter\I-Mac\MAC 10.1.x~10.3\md\_pl2303hx\_1.08b4\PL2303\_1.0.8b4.pkg**
2. Run **PL2303\_1.0.8b4.pkg** from the desktop and then click **Continue**.



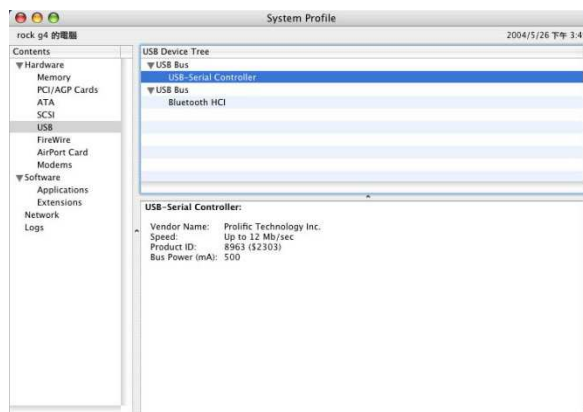
3. Select the location in which you want to install the driver and then click **Continue**.
4. The installation screen will open, click **Install** to begin the installation.



5. A message advising that the installation will require a restart of your Mac will be displayed, click **Continue Installation**.
6. When the installation has completed click **Restart**.



7. When your Mac has restarted you can see the USB to Serial Converter in the System Profile as a USB to Serial Controller, as shown below:



## ***CE / FCC / Recycling Information***

---

### ***CE Certification***

This equipment complies with the requirements relating to Electromagnetic Compatibility Standards EN55022/EN55024 and the further standards cited therein. It must be used with shielded cables only. It has been manufactured under the scope of RoHS compliance.

### ***CE Konformitätserklärung***

Dieses Produkt entspricht den einschlägigen EMV Richtlinien der EU für IT-Equipment und darf nur zusammen mit abgeschirmten Kabeln verwendet werden.

Diese Geräte wurden unter Berücksichtigung der RoHS Vorgaben hergestellt.

Die formelle Konformitätserklärung können wir Ihnen auf Anforderung zur Verfügung stellen

### ***FCC Certification***

This equipment has been tested and found to comply with the limits for a Class B digital device, pursuant to part 15 of the FCC Rules. These limits are designed to provide reasonable protection against harmful interference in a residential installation.

You are cautioned that changes or modification not expressly approved by the party responsible for compliance could void your authority to operate the equipment.

This device complies with part 15 of the FCC Rules.

Operation is subject to the following two conditions:

1. This device may not cause harmful interference, and
2. This device must accept any interference received, including interference that may cause undesired operation.

---

## **LINDY Herstellergarantie – Hinweis für Kunden in Deutschland**

LINDY gewährt für dieses Produkt über die gesetzliche Regelung in Deutschland hinaus eine zweijährige Herstellergarantie ab Kaufdatum. Die detaillierten Bedingungen dieser Garantie finden Sie auf der LINDY Website aufgelistet bei den AGBs.

## **CE / FCC / Recycling Information**

---



### **WEEE (Waste of Electrical and Electronic Equipment), Recycling of Electronic Products**

#### **Europe, United Kingdom**

In 2006 the European Union introduced regulations (WEEE) for the collection and recycling of all waste electrical and electronic equipment. It is no longer allowable to simply throw away electrical and electronic equipment. Instead, these products must enter the recycling process.

Each individual EU member state has implemented the WEEE regulations into national law in slightly different ways. Please follow your national law when you want to dispose of any electrical or electronic products. More details can be obtained from your national WEEE recycling agency.

#### **Germany / Deutschland**

Die Europäische Union hat mit der WEEE Direktive Regelungen für die Verschrottung und das Recycling von Elektro- und Elektronikprodukten geschaffen. Diese wurden im Elektro- und Elektronikgerätegesetz – ElektroG in deutsches Recht umgesetzt. Dieses Gesetz verbietet das Entsorgen von entsprechenden, auch alten, Elektro- und Elektronikgeräten über die Hausmülltonne! Diese Geräte müssen den lokalen Sammelsystemen bzw. örtlichen Sammelstellen zugeführt werden! Dort werden sie kostenlos entgegen genommen. Die Kosten für den weiteren Recyclingprozess übernimmt die Gesamtheit der Gerätehersteller.

#### **France**

En 2006, l'union Européenne a introduit la nouvelle réglementation (DEEE) pour le recyclage de tout équipement électrique et électronique.

Chaque Etat membre de l' Union Européenne a mis en application la nouvelle réglementation DEEE de manières légèrement différentes. Veuillez suivre le décret d'application correspondant à l'élimination des déchets électriques ou électroniques de votre pays.

#### **Italy**

Nel 2006 l'unione europea ha introdotto regolamentazioni (WEEE) per la raccolta e il riciclo di apparecchi elettrici ed elettronici. Non è più consentito semplicemente gettare queste apparecchiature, devono essere riciclate. Ogni stato membro dell' EU ha tramutato le direttive WEEE in leggi statali in varie misure. Fare riferimento alle leggi del proprio Stato quando si dispone di un apparecchio elettrico o elettronico.

Per ulteriori dettagli fare riferimento alla direttiva WEEE sul riciclaggio del proprio Stato.

LINDY No. 42812

2<sup>nd</sup> Edition, February 2014

[www.lindy.com](http://www.lindy.com)



Tested to Comply with  
FCC Standards  
For Home and Office Use!