

TEXNAI

Texnai Stereo 3D Tool Box

JPS Viewer

Version 1.0.2.1

Operation Manual

2003.12.16

Texnai, Inc.

What is JPS Viewer ?

JPS Viewer included in the Texnai's Stereo 3D Tool Box is, as well as JPS Builder, an essential utility program developed for 2-view Interleave Type Stereo 3D LCD users to browse their own stereoscopic JPS images by using the 3D LCD. Where, the JPS image consists of two pictures connected left and right that have parallax each other.

JPS Viewer allows you to display JPS images in stereo and to play a stereoscopic slide show as well.

You can create your own JPS images by using above mentioned Texnai's JPS Builder.

The JPS Builder allows you to adjust the parallax of left and right pictures you shot yourself and to create an excellent stereoscopic JPS images by monitoring the stereoscopic effect with your 3D LCD.

JPS Builder and Viewer are resolution independent, so they are available for any size of H and V Interleaved 2-view 3D LCD such as microPol type 3D LCD and Sharp's V-Interleave G-Shift Parallax Barrier naked eyed 3D LCD. By using any of these LCD, users can increase the stereoscopic display quality by using "Noise Reduction" function.

Available Computer and 3D LCD for running this JPS Viewer

Computer : IBM PC compatible Windows2000 or XP Home Edition/Professional systems

Stereo Display : * Sharp naked eye Parallax Barrier type Stereo3D LCD (V, G-Shift Interleave)

* Vrex microPol type Stereo LCD (H-Interleave) such as Arisawa, Avonine, I/O data

* Naked eye Parallax Barrier type Stereo3D LCD(H & V Interleave) such as DTI, 3D COM, Avonine

Equipments to shoot stereoscopic pictures

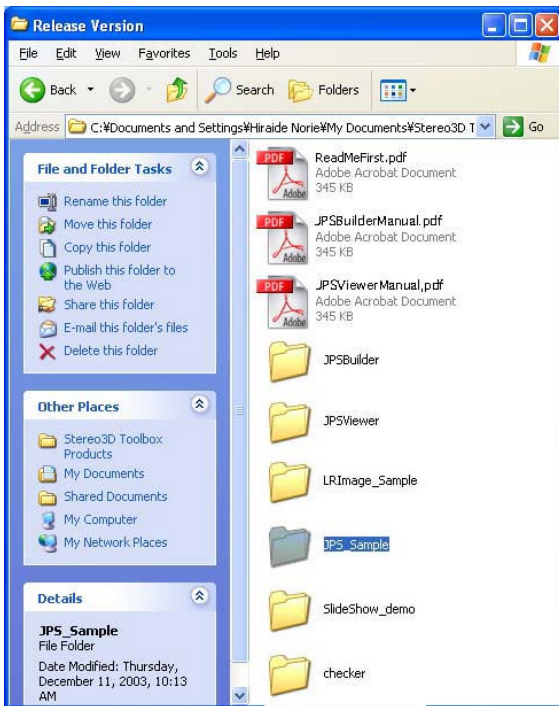
Digital Camera : Any kind of digital camera.

Slide Mount : Novoflex Castel L etc.

Tripod : Any kind of tripod.

Contents of the CD-ROM software package

In the CD-ROM are contained programs and data files as shown below.



- 1) ReadMeFirst.pdf
- 2) JPSBuilderManual.pdf
- 3) JPSViewerManual.pdf
- 4) JPSBuilder Folder/ JPSBuilder setup.exe
- 5) JPSViewer Folder/ JPSViewer setup.exe
- 6) LRImage Sample Folder
 - * doguL.jpg
 - * doguR.jpg
 - * doki01L.jpg
 - * doki01R.jpg
 - * doki02L.jpg
 - * doki02R.jpg
 - * keifuku01L.jpg
 - * keifuku01R.jpg
 - * keifuku02L.jpg
 - * keifuku02R.jpg
- 7) JPS Sample" Folder
 - * dogu.jps
 - * doki01.jps
 - * doki02.jps
 - * keifuku01.jps
 - * keifuku02.jps
- 8) Slide Show Demo Folder
- 9) Checker Folder
 - * L_green.jpg
 - * R_red.jpg
 - * greenRed.jps

Copy all the files into your hard disk.

JPS Viewer Installation

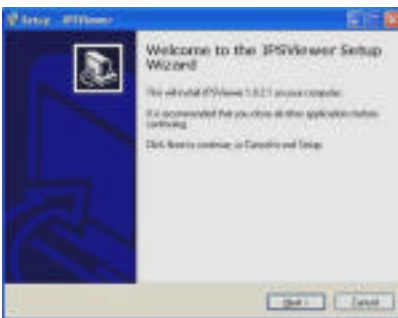
1. Execute JPSViewer setup.exe



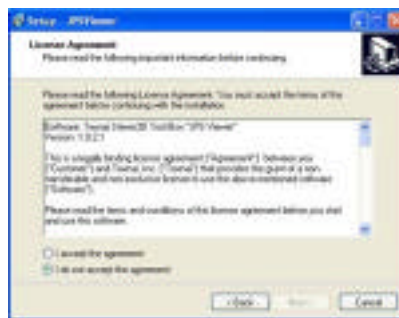
JPSViewer setup.exe

Execute "JPSViewer setup.exe" to install the program.

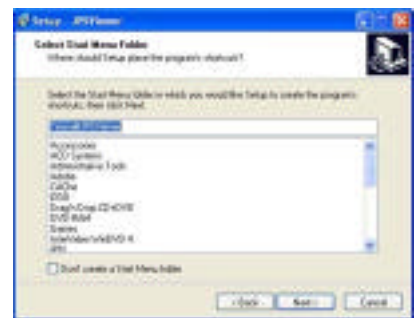
When executing the JPSViewer setup.exe, the following dialogs appears one after another. Read each message carefully and select "Next" or "Install" to proceed the installation.



Welcome message



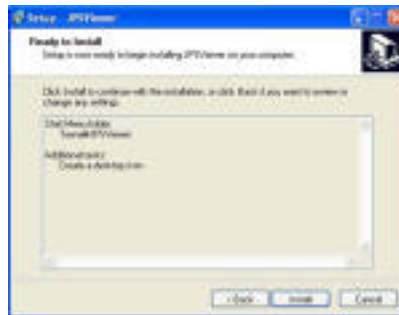
License agreement



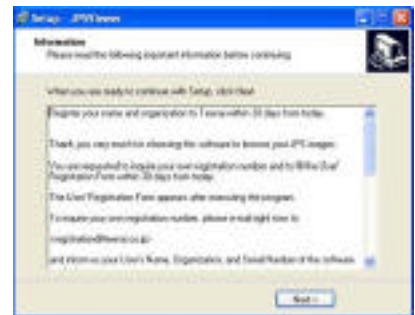
Program folder setup



Additional task setup



Ready to install



Information



Completing the installation

When successfully installed the program, "JPSViewer.exe" is created at "program/texnai" folder in C: or at a location you newly selected.



2. User's registration



When executing JPSViewer.exe for the first time appears the User's Registration Form as shown below.



You are requested to fill the User's Registration Form within 30 days from the first launch to continue to use this software. Regarding your own Registration Number, e-mail to

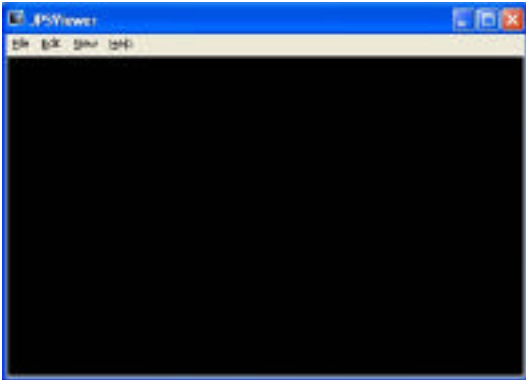
registration@texnai.co.jp

and inform us User's Name, Organization, Serial Number of the CD-ROM. Texnai will send you your User's registration Number as soon as we receive your e-mail.

[Caution] This program is expired if you do not make the User's Registration for more than 30 days after the first use. Even by using the CD-ROM, you can not reinstall the program unless you make User's Registration.

3. Main functions of this program

When executing JPSViewer appears the main windows that contains File Menu, View Menu., etc. as shown below.



3.1 File Menu Functions

Select "File" from the menu bar to open the File Menu.



You can select the following functions from this File Menu.

- 1) Open JPS Image: Allows you to select a single JPS image to display the stereoscopic image on your display.
- 2) Browse Folder: Allows you to select a folder that contains JPS images to display one by one or to display the stereoscopic slide show on your display.

3.2 View Menu Functions

Select "View" from the menu bar or push Right Button of your mouse to open the View Menu.



You can select the following functions from this View Menu.

- 1) Sharp (V-interleave G-Shift) : Creates V and G-Shift Interleaved Image for Sharp grid barrier 2-view 3D LCD (Left first)
- 2) Vrex microPol(H- Interleave): Creates H Interleaved Image for Vrex microPol type 2-view 3D LCD (Left first)
- 3) Swap Left/Right Image: Allows you to swap Left/Right Image on your display.
- 4) Auto trim : Allows you to trim unnecessary part of stereoscopic image.
- 5) Full Screen: Allows you to display Full Screen image.
- 6) Noise Reduction : Allows you to reduce Noise from an interleaved image to increase the quality of stereoscopic display.
- 7) Slide Show: Allows you to play Slide Show using JPS images included in a selected folder.
- 8) Show File Name: Allows you to display File Name of currently selected image.
- 9) Previous Image: Allows you to show a previous image
- 10) Next Image: Allows you to show a next image
- 11) Move Up: Allows you to move right image Up
- 12) Move Down: Allows you to move right image Down
- 13) Close Up: Allows you to move right image Right
- 14) Close Down: Allows you to move right image Left
- 15) VPI On (for Sharp Display) : Allows you to display VPI bar on your Sharp G-shift 3D display.

3.4 Help Menu

You can select Help from the menu bar to open the Help Menu.

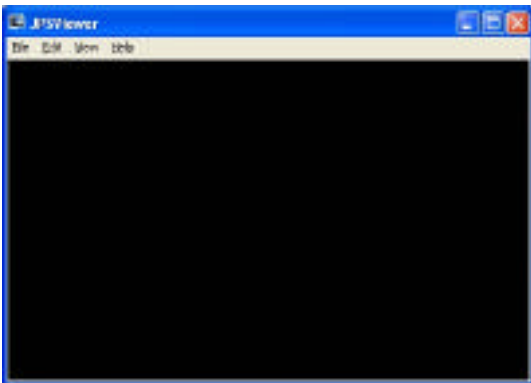


- 1) About JPSViewer: Information on JPS Viewer is shown in this dialog.
- 2) Registration: In case you like to change the current User's Name, you can make User's Registration from here as well inquiring a new Registration Number.

4. Getting started by using sample images

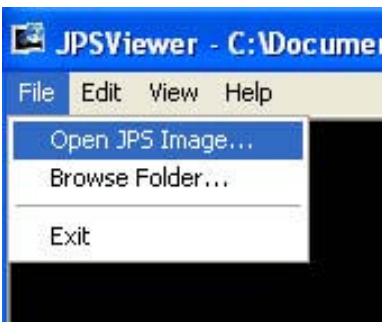
4.1 Executing JPSViewer.exe

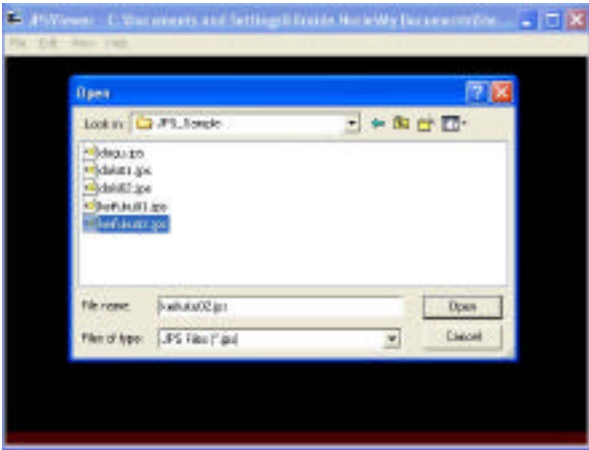
Input necessary information to the User's Registration Form and launch the program.
When successfully launching the program appears the Main Window as shown below.



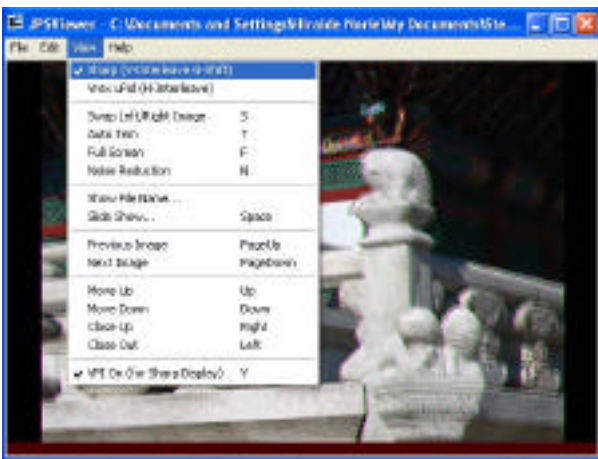
4.2 Opening and display a JPS image in stereo.

- 1) Select Open JPS Image from the File Menu to display a JPS image in stereo.

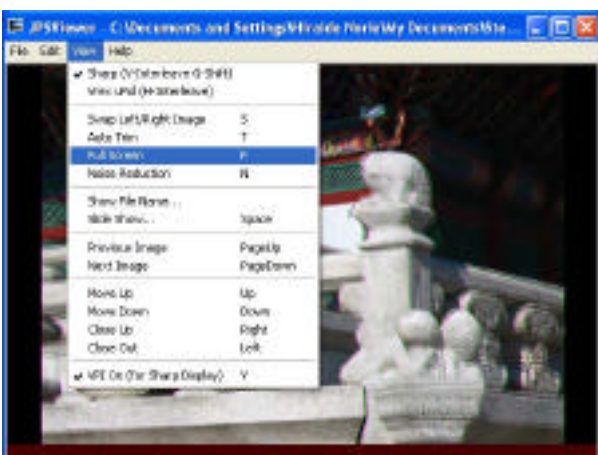




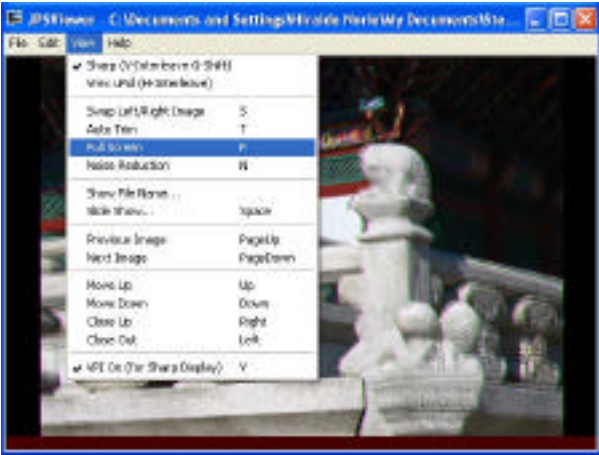
2) Select your 3D display from the View Menu, Sharp (V-interleave G-Shift) or Vrex microPol(H-Interleave)



3) Select Full Screen from the View Menu to display the JPS image with Full Screen in stereo.



4) In case the Left and Right looks reverse, switch the Left and Right by selecting Swap Left/Right Image from the View Menu.



5) Move your Mouse to move the stereoscopic image and move your Mouse Up and Down pushing <Shift> key to enlarge and reduce the stereoscopic image.



6) By using Arrows Keys, you can move the Right picture to adjust the parallax.

7) Try to select Noise Reduction from the View Menu to increase the stereoscopic display quality.

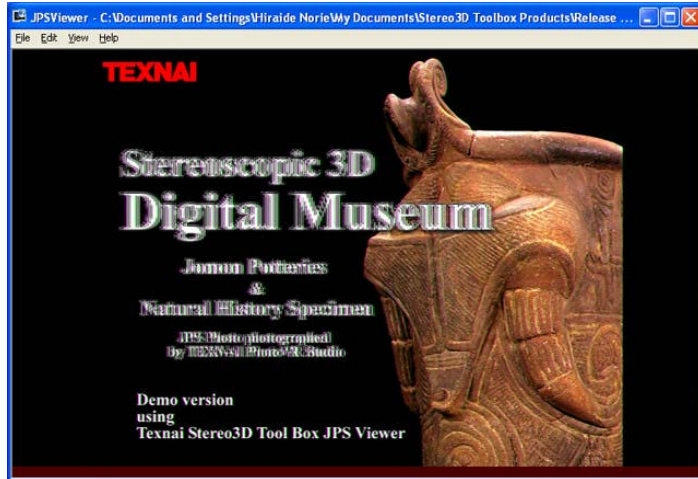
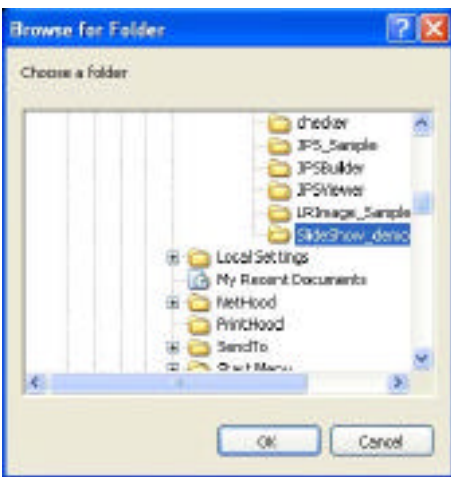


4.3 Display a group of JPS image sequentially in stereo.

1) Select Browse Folder from the File Menu to select a folder that contains JPS images.



When selecting a JPS folder, the top JPS is displayed as shown above.



- 2) Select Full Screen if you like.
- 3) Adjust the parallax if necessary by using View Menu or by using Arrow Keys.
- 4) Select Noise Reduction if you like.
- 5) Turn pages by using <UP> and <DOWN> keys.
- 6) Enlarge or reduce the stereo image by moving your mouse up and down pushing <Shift> key if necessary.
- 7) Move your Mouse to move the stereo image.

4.4 Stereoscopic Slide Show



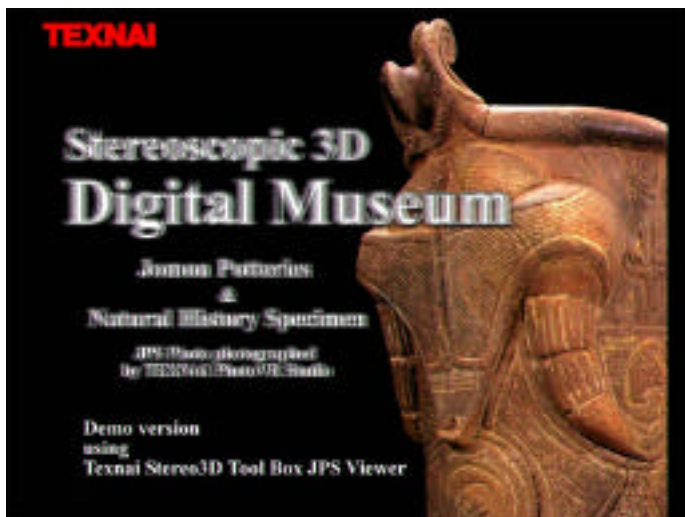
1) Create a folder that contains JPS files that you like to show as a slide show and rename the JPS files with sequential numbers. Add a sound file (wav) to have a BGM with the Slide Show.

2) Select Browse Folder from the File Menu to select the folder that contains the sequential JPS images.

3) Select Slide Show from the View Menu to play the stereoscopic Slide Show

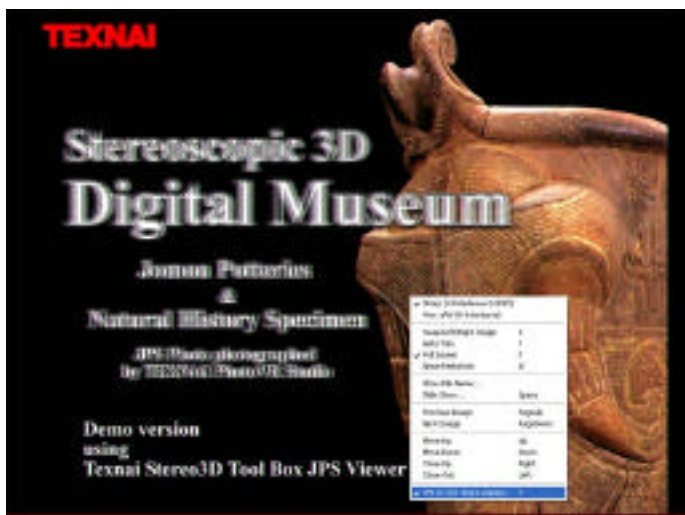
When selecting Slide Show from the View Menu appears a dialog box to setup the time interval (millisecond) between each displaying image.

4) Select Full Screen from the View Menu and play Slide Show.



4.5 VPI Bar for Sharp G-Shift 3D LCD

In case you use Sharp's G-Shift 3D LCD, select VPI On from the View Menu to display the VPI bar at the bottom of the display. Move your eye's position and when the VPI bar becomes completely black, your eyes are right position for the 3D LCD to see the stereoscopic display.



[Note]

* The specifications and the instructions shown in this manual are subject to change without notice.

* The company and product names are trade marks of those companies and products.

Copyright all reserved by Texnai, Inc.

Texnai, Inc./ #1008 2-1 Udagawa-cho, Shibuya-ku, Tokyo, Japan.

Tel: 81-3-3464-6927

Fax: 81-3-3476-2372

e-mail: info@texnai.co.jp

<http://www.texnai.co.jp>