

IPC Fast Operation User Manual

HD-IP CAMERA

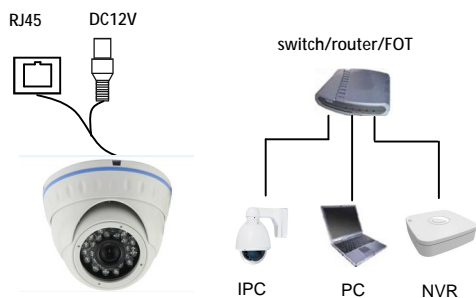


Please refer to the complete User manual for more information from the CD.

Features

- △ Vandalproof IR Dome Camera
- △ Advanced H.264 High profile compression
- △ Support browsers: IE
- △ Support several servers, IP address, DDNS, FTP,SMTP
- △ Support single, dual, three streams
- △ Support iPhone, iPad, Android remote monitor
- △ Support connect to NVR
- △ Support ONVIF2.0
- △ Reliability and compatibility
- △ Low streams and high resolution image

Connection



IPC-DFW3100S

Network Structure

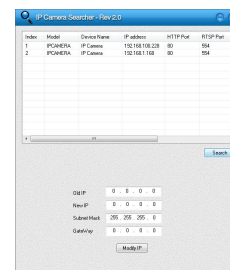
Specifications

Model	IPC-DFW3100S
Image Sensor	1/4" Omnivision 1 Megapixel CMOS Sensor
Resolution	1280×720
Minimum Illumination	>1Lux
S/N Ratio	>50db
Focus Mode	Manual Focus
Day/Night	IR cut filter with auto switch, IR sensor.
Network	1 RJ45 Ethernet interface, 10/100M adaptation
Delay	Within The LAN 0.3S
Frame Rate	25/30 FPS (adjustable)
Video Compression	H.264 /JPEG
Protocol	RTSP/FTP/DDNS/NTP/SMTP
POE	Yes(optional)
Onvif	Support Onvif 2.0 (port:8999)
User Permission	Multi-user Classification Management
Power/Current	DC 12V/1A or POE
Consumption	3.0W
Lens	2 Megapixel HD Board Lens 3.6mm/F2.0
IR Status	IR LED: ϕ 5X24PCS IR range: 20M
Dimension (mm)	ϕ 94 x 69(H) mm
Weight (g)	450
Temperature	-20~55℃
Humidity	0%-90%RH,Without Condensation

NO.	Name	Model	Number (pcs)
1.	HD-IP Camera	IPC-DFW3100S	1
2.	CD	IPC-DFW3100S	1
3.	IPC Fast Operation User Manual	IPC-DFW3100S	1

Access to the IP Camera via IE

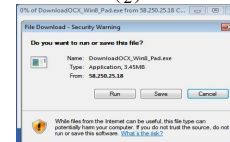
1. Use correct power supply.
2. Make sure the device IP address is in the same LAN with the router, the default IP address of the IPC is 192.168.1.168.
3. Go to CD->IPCSearch.exe and copy it to your computer.
4. Open IPC Search, click "Search", you will find the device IP, and you also can modify the IP information, see the picture (1)
5. Factory default IP setting:
IP Address : 192.168.1.168
Subnet Mask: 255.255.255.0
Gateway: 192.168.1.1
User name: admin
Password: admin



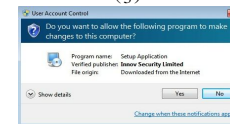
(1)



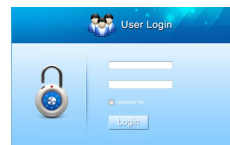
(2)



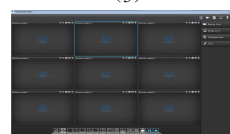
(3)



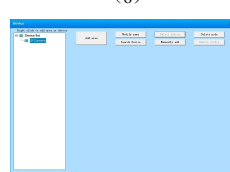
(4)



(5)



(6)



(7)

6. After modifying IP, click "Search" again, you will find the new IP of the your device. Double-click the new IP, you can access to the IPC via IE, or enter the IP Address in the address bar of IE, then click "Enter", the download_OCX controls interface please see the picture (2), Please click here [Download](#) to download the OCX controls.
7. as is shown in picture (3), Click run, the system will automatically download the OCX.
8. Click "yes" as the picture (4),Then it will install the OCX. when complete ,Click "OK" and refresh the page. You will enter the login interface, as is shown in picture (5)

9. Enter your username and password, you can start to access and control your IP Camera.

Access to the IP Camera via HSCMS

Go to CD, find "HerospeedCMS.exe." Copy "HerospeedCMS.exe" to your computer and install it, then run it. See the picture (6):

1. Device list:
See the picture (7):
Here you can manually add your IP Cameras. Also can click "Search device" to search your IP Cameras in local area network.

You can add different areas to manage your device. Below the area you can search all the devices in LAN, then check the IP info to add the camera.

See the picture (8):

You also can click "Manually add" to enter the IP info manually. See the picture (9): Then you can view the images and remote config the IP Camera, such as Alarm, Video, Net, Camuser, Date, etc. Please refer to Herospeed CMS Customer Manual for detail.

2. View the images


After adding the devices, you can see the devices in "Device List" of the main interface, you can double_click the device to control it to play or stop.

Access to the IP Camera via Android mobile


Search and download the surveillance software "Danale" to your mobile from electronic markets or the Mobile Assistant, then install it. Then you can see the icon

of the software  ,click it to run.

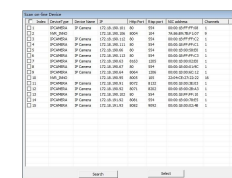
1. Login
The picture (10) shows the login interface:
2. List
As is shown in picture (11)
2.1 Add Camera
Click "add camera", as is shown in picture (12):
Edit the camera name, input the username, password, you can input the camera ID manually or scan the QR code directly. Click "finish" to finish and save it.
3. Video Mode

Click  to set the Video Mode.

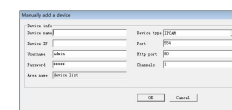
4. Settings

Click  to set the Video As is shown in picture (13):

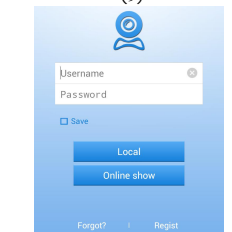
- 4.1 User name password management
Here you can edit the device name, username and password.
- 4.2 NetWork Settings
Here you can set the local network and WIFI according to your need.
- 4.3 Basic information
Here you can view the basic information of the IPC, including device information, storage information, etc.



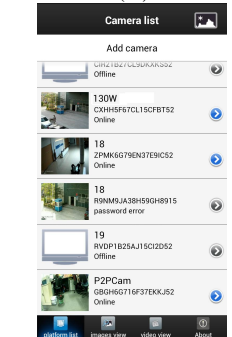
(8)



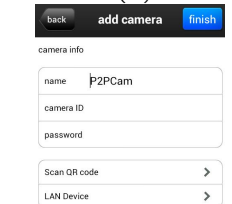
(9)



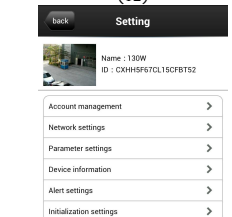
(10)



(11)



(12)



(13)

4.4 Parameter settings

Here you can set some parameters of the IPC, including Video quality, Time setting, Mail settings, Frequency setting, Chroma Setting, and Visu Alangle Settings

4.5 Alarm settings

Here you can set alarms, including Motion Detect, Audio Alarm, I/O Alarm, Privacy Covered alarm, Timing to capture, Timing to record.

4.6 Init settings

Here you can Restore Factory Set and Restart the system of IPC.

4.7 Live View

When playing the video, you can capture, record, open/close the audio or mic; If the IPC supports PTZ, you can slide up, down, left and right on the screen. As shown in figure (14).



(14)

5. Images View

Click “Images View” to playback pictures.

6. Video View

Click “Video View” to playback records.

7. About

Here you can view the information of the monitor software.

Access to the IP Camera via iPhone

Search and install the surveillance software “Danale” on line to your mobile from App store. Then you can see the icon of the software

click it to run.

1. Login

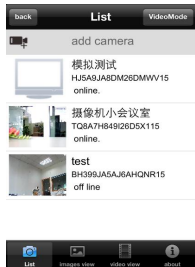
Input username and password, click “Login” in the login interface, you will enter the “List” interface.

2 List

As is shown in figure(15):

2.1 Add Camera

Click to add camera, you will see the picture on the right: Edit the camera name, input the user-name, password, you can input the camera SN manually or scan the QR code directly.



(15)

3. Video Mode

Click “VideoMode” on the top right to set the mode of the video, Including high definition, standard definition and Automatically.

4. Settings

Click to set the IPC. See the picture (16) on the right:

4.1 User name password management

Here you can edit the device name, username and password

4.2 Basic information

Here you can view the basic information of the IPC, including



(16)

4.3 NetWork Settings

Here you can set the local network and WIFI according to your need.

4.4 Parameter settings

Here you can set some parameters of the IPC, Including Video quality, Time setting, Mail settings, Frequency setting, Chroma Setting, and Visu Alangle Settings

4.5 Alarm settings

Here you can set alarms, including Motion Detect, Audio Alarm, I/O Alarm, Privacy Covered alarm, Timing to capture, Timing to record.

4.6 Init settings

Here you can Restore Factory Settings and Restart the system of IPC.

5. Live View

When playing the video, you can capture, record, open/close the audio or mic; If the IPC supports PTZ, you can slide up, down, left and right on the screen. As is shown in the following picture:

6. Images View

Click “Image” to playback pictures.

7. Video View

Click “Video” to playback records.

8. About

Here you can view the information of the monitor software.

Access to the IP Camera via iPad

Search and download the surveillance software “Danale HD” to your iPad from App store and install

it. Then you can see the icon of the software ,click it to run.

1. Login

Input username and password, click “Login” in the



login interface, you will enter the “List” interface.

2. List

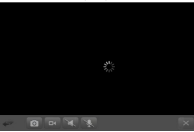
As is shown in figure on the right:

2.1 Add Camera

Click to add camera, you will see the following picture: Edit the camera name, input the username, password, you can



(17)



(18)

4.1 User name password management

Here you can edit the device name, username and password.

4.2 Basic information

Here you can view the basic information of the IPC, including device information, storage information, etc.

4.3 NetWork Settings

Here you can set the local network and WIFI according to your need.

4.4 Parameter settings

Here you can set some parameters of the IPC, including Video quality, Time setting, Mail settings, Frequency setting, Chroma Setting, and Visu Alangle Settings

4.5 Alarm settings

Here you can set alarms, including Motion Detect, Audio Alarm, I/O Alarm, Privacy Covered alarm, Timing to capture, Timing to record.

4.6 Init settings

Here you can Restore Factory Settings and Restart the system of IPC.

5. Live View

When playing the video, you can capture, record, open/close the audio or mic; If the IPC supports PTZ, you can slide up, down, left and right on the screen. As is shown in the right picture:



6. Images View

Click “Image” to playback pictures.

7. Video View

Click “Video” to playback records.

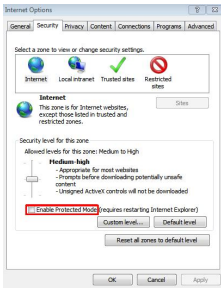
8. About

Here you can view the information of the monitor software.

FAQ

1.Why cannot capture?

If you capture failed and the storage folder cannot pop up automatically ,please check your IE, don't select “Enable protected mode”.



2.Why can not access the camera after update?

Clean browser cache.

Steps: open IE, click “Tools” and select “Internet Options”, then you can see “Temporary Internet files” and click “Delete Files”, it will prompt a dialog you need to check “Delete all offline content” and click “OK”.

3. Why can not show the whole interface?

Close some options of IE.

Steps: Open IE, click “View” and select “Toolbar”, close the “Favorites bar”, “Status bar” and “Command bar”.

4. Why cannot I watch the mobile surveillance video after entering the login information?

- A、 Please check whether the settings page, server, port, user name, password and other information are filled in correctly.
- B、 Please check your network to see whether your phone is connected to the external network .
- C、 If your device is connected to the external network via router, please check whether the mobile port mapped in the routing . (For mapping settings, please refer to the router manual).
- D、 Please check whether the IP address you have filled in is the LAN IP (If your IP starts with the following format, it is a local area network : 10.xx . 172.xx . 192.xx. If you use such IP, you can only be in the same LAN with the device to be connected).
- E、 Please check your port to ensure that it must be the mobile port.

5. Why does it show “Get Param Failed”?

- 1.Please check the IP information, such as port.
- 2.Please make sure the IP Camera connected correctly.
- 3.The network status is poor.

6. I have already added the device, why it shows “Initial Failed!”?

Solution: Please delete the device and add it again.

The Important Safety Information

Please be sure to read the following important safety information before install and use the product.

CAUTION:
RISK OF ELECTRIC. DO NOT OPEN

CAUTION:
TO REDUCE THE RISK OF ELECTRIC DO NOT REMOVE COVER OR BACK NO USER SERVICEABLE PARTS INSIDE. REFER SERVICING TO QUALIFIED SERVICE PERSONNEL.

CAUTION:
TO PREVENT ELECTRIC SHOCKS AND RISK OF FIRE HAZARDS, DO NOT USE OTHER THAN SPECIFIED POWER SOURCE.

Notes:

- The power supply must through safe attestation. Its output voltage, current, voltage polarity and operating temperature must match the camera's requirement.
- When using the camera in the thunderbolt condition, please note to mount Anti-thunder device or put off the power supply plug and cable.
- In order to capture high quality pictures, the power supply's cable and video output cable should not be too long.