

Oracle® Release Management Technical Reference Manual

RELEASE 11i

March 2000



Oracle® Release Management Technical Reference Manual
Release 11i

To order this book, ask for Part No. A83736_01

Copyright © 2000. Oracle Corporation. All rights reserved.

Major Contributors: Sai Addepalli, Ashwin Kulkarni, Anil Verma

Contributors: Zoe Mitchell, Dave Reitan, Richard Sears, Elizabeth Looney

This Technical Reference Manual (TRM) in any form, software or printed matter, contains proprietary information of Oracle Corporation; it is provided under an Oracle Corporation agreement containing restrictions on use and disclosure and is also protected by copyright, patent, and other intellectual property law. Restrictions applicable to this TRM include, but are not limited to: (a) exercising either the same degree of care to safeguard the confidentiality of this TRM as you exercise to safeguard the confidentiality of your own most important Confidential Information or a reasonable degree of care, whichever is greater; (b) maintaining agreements with your employees and agents that protect the Confidential Information of third parties such as Oracle Corporation and instructing such employees and agents of these requirements for this TRM; (c) restricting disclosure of this TRM to those of your employees who have a "need to know" consistent with the purposes for which this TRM was disclosed to you; (d) maintaining this TRM at all times on your premises; (e) not removing or destroying any proprietary or confidential legends or markings placed upon this TRM in whatever form, software or printed matter; and (f) not reproducing or transmitting this TRM in any form or by any means, electronic or mechanical, for any purpose, without the express written permission of Oracle Corporation. You should not use this TRM in any form, software or printed matter, to create software that performs the same or similar functions as any Oracle Corporation products.

The information in this TRM is subject to change without notice. If you find any problems in the TRM in any form, software or printed matter, please report them to us in writing. Oracle Corporation does not warrant that this TRM is error-free. This TRM is provided to customer "as-is" with no warranty of any kind. This TRM does not constitute Documentation as that term is defined in Oracle's agreements.

Reverse engineering of the Programs (software and documentation) associated with this TRM are prohibited. The Programs associated with this TRM are not intended for use in any nuclear, aviation, mass transit, medical, or other inherently dangerous applications. It shall be licensee's responsibility to take all appropriate fail-safe, back-up, redundancy and other measures to ensure the safe use of such applications if the Programs are used for such purposes, and Oracle disclaims liability for any damages caused by such use of the Programs.

Restricted Rights Legend

This TRM and the Programs associated with this TRM delivered subject to the DOD FAR Supplement are 'commercial computer software' and use, duplication and disclosure of the TRM and the Programs associated with this TRM shall be subject to the licensing restrictions set forth in the applicable Oracle license agreement. Otherwise, this TRM and the Programs associated with this TRM delivered subject to the Federal Acquisition Regulations are 'restricted computer software' and use, duplication and disclosure of the TRM and the Programs associated with this TRM shall be subject to the restrictions in FAR 52.227-14, Rights in Data -- General, including Alternate III (June 1987). Oracle Corporation, 500 Oracle Parkway, Redwood City, CA 94065.

Oracle is a registered trademark, and CASE*Exchange, Enabling the Information Age, Hyper*SQL, NLS*Workbench, Oracle7, Oracle8, Oracle 8i, Oracle Access, Oracle Application Object Library, Oracle Discoverer, Oracle Financials, Oracle Quality, Oracle Web Customers, Oracle Web Employees, Oracle Work in Process, Oracle Workflow, PL/SQL, Pro*Ada, Pro*C, Pro*COBOL, Pro*FORTRAN, Pro*Pascal, Pro*PL/I, SmartClient, SQL*Connect, SQL*Forms, SQL*Loader, SQL*Menu, SQL*Net, SQL*Plus, and SQL*Report are trademarks or registered trademarks of Oracle Corporation. Other names may be trademarks of their respective owners.



CAUTION

This Technical Reference Manual in any form -- software or printed matter -- contains proprietary, confidential information that is the exclusive property of Oracle Corporation. If you do not have a valid contract with Oracle for the use of this Technical Reference Manual or have not signed a non-disclosure agreement with Oracle covering this Technical Reference Manual, then you received this document in an unauthorized manner and are not legally entitled to possess or read it.

Use, duplication, and disclosure are subject to restrictions stated in your contract with Oracle Corporation.



Contents

Chapter 1	Introduction	1 – 1
	Introduction	1 – 2
Chapter 2	High-Level Design	2 – 1
	Overview of High-Level Design	2 – 2
Chapter 3	Detailed Design	3 – 1
	Overview of Detailed Design	3 – 2
	Table and View Definitions	3 – 3

Oracle Proprietary, Confidential Information--Use Restricted by Contract

Oracle Proprietary, Confidential Information--Use Restricted by Contract

Introduction

The *Oracle Release Management Technical Reference Manual* provides the information you need to understand the underlying structure of Oracle Release Management. After reading this manual, you should be able to convert your existing applications data, integrate your existing applications with your Oracle Release Management application, and write custom reports for your Oracle Release Management application, as well as read data that you need to perform other tasks.

This chapter introduces you to the *Oracle Release Management Technical Reference Manual*, and explains how to use it.

Introduction

At Oracle, we design and build applications using Oracle Designer, our systems design technology that provides a complete environment to support developers through all stages of a systems life cycle. Because we use a repository-based design toolset, all the information regarding the underlying structure and processing of our applications is available to us online. Using Oracle Designer, we can present this information to you in the form of a technical reference manual.

This *Oracle Release Management Technical Reference Manual* contains detailed, up-to-date information about the underlying structure of Oracle Release Management. As we design and build new releases of Oracle Release Management applications, we update our Oracle Designer repository to reflect our enhancements. As a result, we can always provide you with an *Oracle Release Management Technical Reference Manual* that contains the latest technical information as of the publication date. Note that after the publication date we may have added new indexes to Oracle Release Management to improve performance.

About this Manual

This manual describes the Oracle Applications Release 11i data model, as used by Oracle Release Management; it discusses the database we include with a fresh install of Oracle Applications Release 11i. If you have not yet upgraded to Release 11i, your database may differ from the database we document in this book.

If you have upgraded from a previous release, you might find it helpful to use this manual with the appropriate *Oracle Applications Product Update Notes* manual. The product update notes list database changes and seed data changes in Oracle Release Management between releases. The *Oracle Applications Product Update Notes Release 11* manual describes the changes between Release 10.7 and Release 11, and the *Oracle Applications Product Update Notes Release 11i* manual describes the changes between Release 11 and Release 11i.

You can contact your Oracle representative to confirm that you have the latest technical information for Oracle Release Management. You can also use *OracleMetaLink* which is accessible through Oracle's Support Web Center (http://www.oracle.com/support/elec_sup).

Oracle Proprietary, Confidential Information--Use Restricted by Contract

Finding the Latest Information

The *Oracle Release Management Technical Reference Manual* contains the latest information as of the publication date. For the latest information we encourage you to use Oracle *MetaLink* which is accessible through Oracle's Support Web Center (http://www.oracle.com/support/elec_sup).

Audience

The *Oracle Release Management Technical Reference Manual* provides useful guidance and assistance to:

- Technical End Users
- Consultants
- Systems Analysts
- System Administrators
- Other MIS professionals

This manual assumes that you have a basic understanding of structured analysis and design, and of relational databases. It also assumes that you are familiar with Oracle Application Object Library and your Oracle Release Management application. If you are not familiar with the above products, we suggest that you attend one or more of the training classes available through Oracle Education (see: Other Information Sources: page 1 – 8).

How This Manual is Organized

This manual contains two major sections, High-Level Design and Detailed Design.

High-Level Design

This section, Chapter 2, contains database diagrams and lists each database table and view that Oracle Release Management uses. This chapter also has a list of modules.

Detailed Design

This section, Chapter 3, contains a detailed description of the Oracle Release Management database design, including information about each database table and view you might need for your custom reporting or other data requirements.

How to Use This Manual

The *Oracle Release Management Technical Reference Manual* is a single, centralized source for all the information you need to know about the underlying structure and processing of your Oracle Release Management application. For example, you can use this manual when you need to:

- Convert existing application data
- Integrate your Oracle Release Management application with your other applications systems
- Write custom reports
- Define alerts against Oracle Applications tables
- Configure your Oracle Self-Service Web Applications
- Create views for decision support queries using query tools
- Create business views for Oracle Discoverer

You need not read this manual cover to cover. Use the table of contents and index to quickly locate the information you need.

How Not To Use This Manual

Do not use this manual to plan modifications

You should not use this manual to plan modifications to your Oracle Release Management application. Modifying Oracle Release Management limits your ability to upgrade to future releases of your Oracle Release Management application. In addition, it interferes with our ability to give you the high-quality support you deserve.

We have constructed your Oracle Release Management application so that you can customize it to fit your needs without programming, and you can integrate it with your existing applications through interface tables. However, should you require program modifications, you should contact our support team (see: Other Information Sources: page 1 – 8). They can put you in touch with Oracle Services, the professional consulting organization of Oracle. Their team of experienced applications professionals can make the modifications you need while ensuring upward compatibility with future product releases.

Do not write data into non-interface tables

Oracle reserves the right to change the structure of Oracle Applications tables, and to change the meaning of, add, or delete lookup codes and data in future releases. Do not write data directly into or change data in non-interface tables using SQL*Plus or other programming tools because you risk corrupting your database and interfering with our ability to support you.

Moreover, this version of the *Oracle Release Management Technical Reference Manual* does not contain complete information about the dependencies between Oracle Release Management applications tables. Therefore, you should write data into only those tables we identify as interface tables. If you write data into other non-interface tables, you risk violating your data integrity since you might not fulfill all the data dependencies in your Oracle Release Management application.

You are responsible for the support and upgrade of the logic within the procedures that you write, which may be affected by changes between releases of Oracle Applications.

Do not rely on upward compatibility of the data model

Oracle reserves the right to change the structure of Oracle Release Management applications tables, and to change the meaning of, add, or delete lookup codes and other data in future releases. We do not guarantee the upward compatibility of the Oracle Release Management applications data model. For example, if you write a report that identifies concurrent requests that end in Error status by selecting directly from Oracle Application Object Library tables, we do not guarantee that your report will work properly after an upgrade.

About Oracle Application Object Library

The *Oracle Release Management Technical Reference Manual* may contain references to tables that belong to Oracle Application Object Library. Oracle Application Object Library is a collection of pre-built application components and facilities for building Oracle Applications and extensions to Oracle Applications. Oracle Application Coding Standards use the Oracle Application Object Library and contains shared components including but not limited to -- forms, subroutines, concurrent programs and reports, database tables and objects, messages, menus, responsibilities, flexfield definitions and online help.

Oracle Proprietary, Confidential Information--Use Restricted by Contract



Attention: Oracle does not support *any* customization of Oracle Application Object Library tables or modules, not even by Oracle consultants. (Oracle Application Object Library tables generally have names beginning with FND_%.)

Accordingly, this manual does not contain detailed information about most Oracle Application Object Library tables used by your Oracle Release Management application.

A Few Words About Terminology

The following list provides you with definitions for terms that we use throughout this manual:

Relationship

A relationship describes any significant way in which two tables may be associated. For example, rows in the Journal Headers table may have a one-to-many relationship with rows in the Journal Lines table.

Database Diagram

A database diagram is a graphic representation of application tables and the relationships between them.

Module

A module is a program or procedure that implements one or more business functions, or parts of a business function, within an application. Modules include forms, concurrent programs and reports, and subroutines.

Application Building Block

An application building block is a set of tables and modules (forms, reports, and concurrent programs) that implement closely-related database objects and their associated processing. Said another way, an application building block is a logical unit of an application.

QuickCodes

QuickCodes let you define general purpose, static lists of values for window fields. QuickCodes allow you to base your program logic on lookup codes while displaying user-friendly names in a list of values

Oracle Proprietary, Confidential Information--Use Restricted by Contract

window. QuickCodes simplify name and language changes by letting you change the names your end users see, while the codes in your underlying programs remain the same.

Form

A form is a module comprised of closely related windows that are used together to perform a task. For example, the Enter Journals form in Oracle General Ledger includes the Enter Journals window, the Batch window, and the More Actions window among others. The Enter Journals window is the main window, and from it, you can use buttons to navigate to other windows in the form. The form name usually corresponds to the main window in the form, and is frequently a window you open directly from the Navigator.

Other Information Sources

There are additional information sources, including other documentation, training and support services, that you can use to increase your knowledge and understanding of Oracle Designer, Oracle Application Object Library, and your Oracle Release Management application. We want to make these products easy for you and your staff to understand and use.

Oracle Designer Online Documentation

The online help for Oracle Designer describes how you can use Oracle Designer for your development needs.

Oracle Applications Developer's Guide

This guide contains the coding standards followed by the Oracle Applications development staff. It describes the Oracle Application Object Library components needed to implement the Oracle Applications user interface described in the *Oracle Applications User Interface Standards*. It also provides information to help you build your custom Developer forms so that they integrate with Oracle Applications.

Oracle Applications User Interface Standards

This manual contains the user interface (UI) standards followed by the Oracle Applications development staff. It describes the UI for the

Oracle Proprietary, Confidential Information--Use Restricted by Contract

Oracle Applications products and how to apply this UI to the design of an application built using Oracle Forms 6.

Oracle Release Management applications User Guide

Your user guide provides you with all the information you need to use your Release 11i Oracle Release Management application. Each user guide is organized for fast, easy access to detailed information in a function- and task-oriented organization.

Oracle Self-Service Web Applications Online Documentation

This documentation describes how Oracle Self-Service Web Applications enable companies to provide a self-service and secure Web interface for employees, customers, and suppliers. Employees can change their personal status, submit expense reports, or request supplies. Customers can check on their orders, and suppliers can share production schedules with their trading partners. This documentation is available in HTML only.

Oracle Applications Flexfields Guide

This guide provides flexfields planning, setup and reference information for the Oracle Release Management implementation team, as well as for users responsible for the ongoing maintenance of Oracle Applications product data. This manual also provides information on creating custom reports on flexfields data.

Oracle Workflow Guide

This manual explains how to define new workflow business processes as well as customize existing Oracle Applications-embedded workflow processes. You also use this guide to complete the setup steps necessary for any Oracle Applications product that includes workflow-enabled processes.

Oracle Alert User Guide

This manual explains how to define periodic and event alerts to monitor the status of your Oracle Applications data.

Multiple Reporting Currencies in Oracle Applications

If you use the Multiple Reporting Currencies feature to report and maintain accounting records in more than one currency, use this

Oracle Proprietary, Confidential Information--Use Restricted by Contract

manual before implementing Oracle Release Management. This manual details additional steps and setup considerations for implementing Oracle Release Management with this feature.

Multiple Organizations in Oracle Applications

If you use the Oracle Applications Multiple Organization Support feature to use multiple sets of books for one Oracle Release Management installation, use this guide to learn about setting up and using Oracle Release Management with this feature. This book describes the Oracle Applications organization model, which defines business units and the relationships between them in an arbitrarily complex enterprise. Functional and technical overviews of multiple organizations are presented, as well as information about how to set up and implement this feature set in the relevant Oracle Applications products.

Oracle Manufacturing, Distribution, Sales and Service Open Interfaces Manual

This manual contains up-to-date information about integrating with other Oracle Manufacturing applications and with your other systems. This documentation includes open interfaces found in Oracle Manufacturing.

Oracle Applications Messages Manual

The Oracle Applications Messages Manual contains the text of numbered error messages in Oracle Applications. (Oracle Applications messages begin with the prefix "APP-".) It also provides information on the actions you take if you get a message. Note: This manual is available only in HTML format.

Installation and System Administration

Oracle Applications Installation Release Notes

This manual contains a road map to the components of the release, including instructions about where to access the Release 11i documentation set.

Oracle Proprietary, Confidential Information--Use Restricted by Contract

Oracle Applications Concepts

Designed to be the first book the user reads to prepare for an installation of Oracle Applications. It explains the technology stack, architecture, features and terminology for Oracle Applications Release 11i. This book also introduces the concepts behind and major uses of Applications-wide features such as MRC, BIS, languages and character sets (NLS, MLS), BIS, Self-Service Web Applications and so on.

Installing Oracle Applications

Describes the One-Hour Install process, the method by which Release 11i will be installed. This manual includes all how-to steps, screen shots and information about Applications-wide post-install tasks.

Using the AD Utilities

This manual contains how-to steps, screen shots and other information required to run the various AD utilities such as AutoInstall, AutoPatch, AD Administration, AD Controller, Relink and so on. It also contains information about when and why you should use these utilities.

Upgrading Oracle Applications

This manual contains all the product specific pre- and post-upgrade steps that are required to upgrade products from Release 10.7 (NCA, SC and character-mode) or Release 11 of Oracle Applications. This manual also contains an overview chapter that describes all the tasks necessary to prepare and complete a upgrade of Oracle Applications.

Oracle Applications System Administrator's Guide

This manual provides planning and reference information for the Oracle Applications System Administrator. It contains information on how to define security, customize menus and manage concurrent processing.

Oracle Applications Product Update Notes

This book contains a summary of each new feature we added since Release 11, as well as information about database changes and seed data changes that may affect your operations or any custom reports you have written. If you are upgrading from Release 10.7 you also need to read *Oracle Applications Product Update Notes Release 11*.

Oracle Self-Service Web Applications Implementation Manual

This manual describes the setup steps for Oracle Self-Service Web Applications and the Web Applications Dictionary.

Oracle Applications Implementation Wizard User Guide

If you are implementing more than one Oracle product, you can use the Oracle Applications Implementation Wizard to coordinate your setup activities. This guide describes how to use the wizard.

Other Information

Training

Oracle Education offers a complete set of training courses to help you and your staff master Oracle Applications. We can help you develop a training plan that provides thorough training for both your project team and your end users. We will work with you to organize courses appropriate to your job or area of responsibility.

Training professionals can show you how to plan your training throughout the implementation process so that the right amount of information is delivered to key people when they need it the most. You can attend courses at any one of our many Educational Centers, or you can arrange for our trainers to teach at your facility. In addition, we can tailor standard courses or develop custom courses to meet your needs.

Support

From on-site support to central support, our team of experienced professionals provides the help and information you need to keep your Oracle Release Management application working for you. This team includes your Technical Representative, Account Manager, and Oracle's large staff of consultants and support specialists with expertise in your business area, managing an Oracle server, and your hardware and software environment.

Oracle Proprietary, Confidential Information--Use Restricted by Contract

About Oracle

Oracle Corporation develops and markets an integrated line of software products for database management, applications development, decision support, and office automation, as well as Oracle Applications, an integrated suite of more than 75 software modules for financial management, supply chain management, manufacturing, project systems, human resources, and sales and service management.

Oracle products are available for mainframes, minicomputers, personal computers, network computers, and personal digital assistants, allowing organizations to integrate different computers, different operating systems, different networks, and even different database management systems, into a single, unified computing and information resource.

Oracle is the world's leading supplier of software for information management, and the world's second largest software company. Oracle offers its database, tools, and applications products, along with related consulting, education, and support services, in over 145 countries around the world.

Thank You

Thanks for using Oracle Release Management applications and this technical reference manual!

We appreciate your comments and feedback. At the back of this manual is a Reader's Comment Form that you can use to explain what you like or dislike about your Oracle Release Management application or this technical reference manual. Mail your comments to the following address or call us directly at (650) 506-7000.

Oracle Applications Documentation Manager
Oracle Corporation
500 Oracle Parkway
Redwood Shores, California 94065
U.S.A.

Or, send electronic mail to appsdoc@us.oracle.com.

Oracle Proprietary, Confidential Information--Use Restricted by Contract

CHAPTER

2

High-Level Design

This chapter presents a high-level design for Oracle Release Management that satisfies the business needs we specify during Strategy and Analysis. It contains database diagrams for Oracle Release Management application building blocks, lists of database tables and views, and a list of modules.

Overview of High-Level Design

During High-Level Design, we define the application components (tables, views, and modules) we need to build our application. We specify what application components should do without specifying the details of *how* they should do it.

You can refer to this High-Level Design chapter to quickly acquaint yourself with the tables, views, and modules that comprise Oracle Release Management applications. And, you can prepare yourself to understand the detailed design and implementation of Oracle Release Management.

Database Diagrams

The Database Diagrams section graphically represents all Oracle Release Management applications tables and the relationships between them, organized by building block.

Use this section to quickly learn what tables each Oracle Release Management application building block uses, and how those tables interrelate. Then, you can refer to the Table and View Definitions sections of Chapter 3 for more detailed information about each of those tables.

Table Lists

The Table List sections list the Oracle Release Management applications tables. Because a product might not include at least one table for each type, this Oracle Release Management Technical Reference Manual might not include each of the following sections.

Public Tables

Use the Public Table List section to quickly identify the tables you are most interested in. Then, you can refer to the Table and View Definitions sections of Chapter 3 for more detailed information about those tables.

In addition, this manual may contain full documentation for one or more of the following Application Object Library tables: FND_DUAL, FND_CURRENCIES, and FND_COMMON_LOOKUPS.

Oracle Proprietary, Confidential Information--Use Restricted by Contract

Internal Tables

This section includes a list of private, internal tables used by Oracle Release Management; we do not provide additional documentation for these tables.

View Lists

The View List sections list the Oracle Release Management views, with one section for each type of view. Because a product might not include at least one view for each type, this Oracle Release Management Technical Reference Manual might not include each of the following sections.

Use this section to quickly identify the views you are most interested in. Then, you can refer to the Table and View Definitions sections of Chapter 3 for more detailed information about those views.

Public Views

This section lists views that may be useful for your custom reporting or other data requirements. The list includes a description of the view, and the page in Chapter 3 that gives detailed information about the public view.

Web Views

This section lists views that you may need to configure your Self-Service Web applications. The list includes a description of the view, and the page in Chapter 3 that gives detailed information about the web view.

Internal Views

This section includes each private, internal view that Oracle Release Management uses.

Multiple Reporting Currency Views

This list includes views that were created to support the Multiple Reporting Currencies feature.

Module List

The Module List section briefly describes each of the Oracle Release Management applications modules. This section lists forms, reports, and concurrent programs.

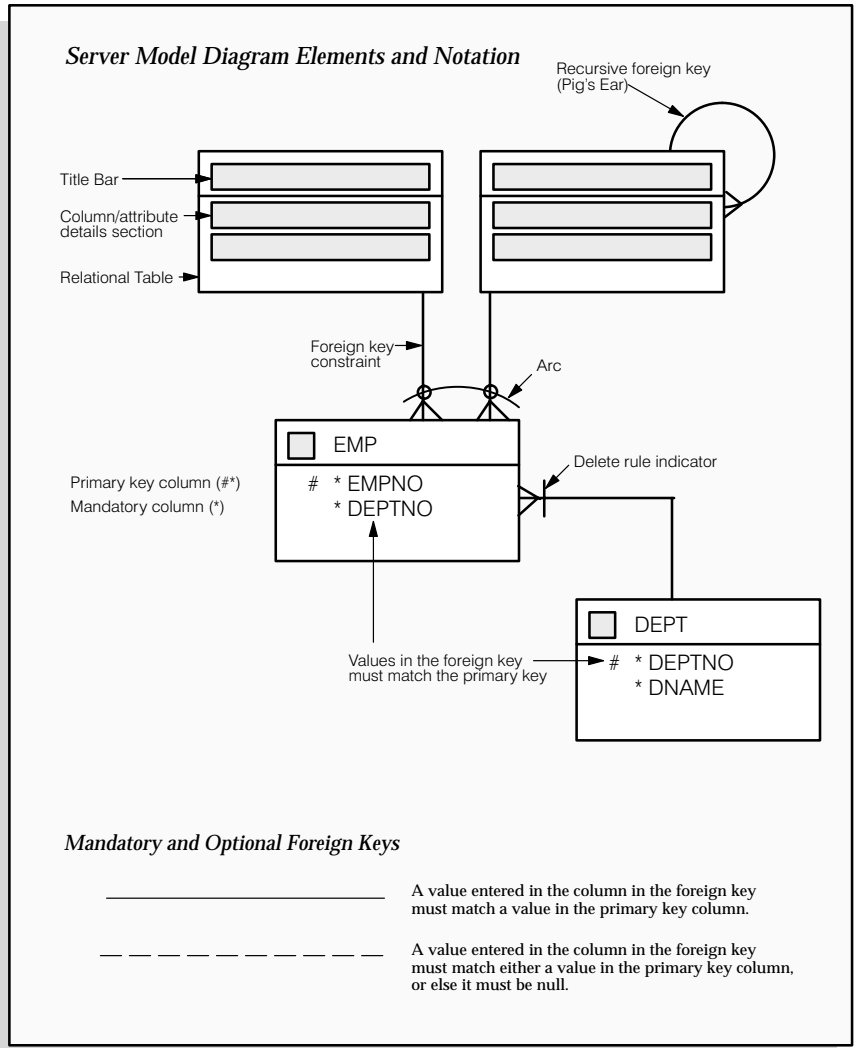
A form is a module comprised of closely related windows that are used together to perform a task. For example, the Enter Journals form in Oracle General Ledger includes the Enter Journals window, the Batch window, and the More Actions window. The Enter Journals window is the main window, and from it, you can use buttons to navigate to other windows in the form. The form name usually corresponds to the main window in the form, and is frequently a window you can open directly from the Navigator.

The Reports and Concurrent Programs lists include processes you can submit from the Submit Requests window or other windows, as well as processes that are submitted automatically by Oracle Release Management. Use your user's guide to learn more about reports and concurrent processes.

Database Diagramming Conventions

We use the following notational conventions in our database diagrams:

Figure 2 - 1
Database Diagram
Conventions



Tables – are the basic unit of storage in the database. A hand symbol preceding the title in the table's title bar indicates that the table is not owned by this application but shared with another.

Foreign key constraint – is a type of referential integrity constraint for checking the integrity of data entered in a specific column or set of columns. This specified column or set of columns is known as the foreign key.

Delete rule indicator – determines the action to be taken when an attempt is made to delete a related row in a join table. A line through the foreign key constraint, as shown on the above diagram, indicates that this action is restricted.

Arcs – specify that, for any given row in a table, a value must be entered in one of the arc columns. The remaining columns within the arc must be null.

Public Table List

This section lists each public database table that Oracle Release Management uses and provides a brief description of each of those tables. The page reference is to the table description in Chapter 3.

Note that "public" tables are not necessarily intended for write access by custom code; Oracle Corporation supports write access using only standard Oracle Applications forms, reports, and programs, or any SQL write access to tables explicitly documented as API tables. For more information, see the How Not To Use This Manual section of this book's Introduction.

Oracle Release Management uses the following Public tables:

Table Name	Description
RLM_CUST_ITEM_CUM_ADJ_ALL	This table stores adjustments to the cum for all RLM customer destination items. It has a child relationship to RLM_CUST_ITEM_CUM_KEYS. The adjustments reflect manual CUM adjustment via a form in the Release Management module. If CUMManagement is enabled, the adjustments in this table, along with the shipping transaction information from the Shipping Module, are used in the Demand Stream Processor and Shipping applications to dynamically calculate the supplier CUM according to the CUM calculation rules defined for the customer destination. The contents of this table are displayed in the CUM Management Workbench. (See page 3 – 8)

RLM_CUST_ITEM_CUM_KEYS_ALL

This table stores the CUM key values associated with a particular ship-to/ship-from/item combination according to the CUM Management rules defined for the trading partners which are supported in Oracle Release Management. If CUM Management is enabled, this table defines the entity for which a CUM would be calculated: i.e. there is one row in this table for every bill-to, ship-to, ship-from, item, CUM key combination. The CUM key will vary by customer; in addition to ship-to, ship-from, and item, it could include any combination of CUM starting date, Purchase Order Number, or Record keeping year. If CUM Management is enabled, related child rows in RLM_CUST_ITEM_CUM_ADJ will indicate all adjustment transactions between the two trading partners related to this specific customer-defined accumulation grouping only, e.g. for this PO only, for this record keeping year only. If CUM Management is disabled, this table is not populated. In an FBO environment, there would be a row for each component used for the customer, since the top model number, i.e. end item, does not need cum management. Rows in this table are automatically inserted as needed by the Shipping functions or manually entered in the CUM Adjustment Transaction form. This table has a child relationship to RLM_SHIP_FROM_CUST_ITEMS, and a parent relationship to RLM_CUST_ITEM_CUM_ADJ. (See page 3 - 10)

RLM_CUST_ITEM_TERMS_ALL

This table contains new R-12 customer item attributes which are dependent upon the Ship-From Customer Item relationship. Some attributes from Phase 1 were carried forward from VEH_MTL_CUSTOMER_ITEMS, which is being eliminated in Phase 2. (See page 3 - 14)

RLM_CUST_SHIPTO_TERMS_ALL

This table contains new R-12 customer address attributes which are dependent upon the ship-from/ship-to relationship. Some attributes from Phase 1 were carried forward from VEH_RA_ADDRESSES, which is being eliminated in Phase 2. (See page 3 - 19)

RLM_DEMAND_EXCEPTIONS

This table contains Release Management Exception records (See page 3 - 26)

Oracle Proprietary, Confidential Information--Use Restricted by Contract

RLM_INTERFACE_HEADERS_ALL	This table stores the header level details of the Release Management schedules. It has details pertaining to the specific schedule and customer level information. EDI Gateway will feed into this table for the demand transactions of Planning, Shipping and Sequenced Schedules. (See page 3 – 30)
RLM_INTERFACE_LINES_ALL	EDI Inbound Gateway feeds into this table which stores the item and item detail level information associated with customer planning, shipping, or production sequenced schedules. (See page 3 – 34)
RLM_MESSAGE_CATEGORY	Release Management Message Category, used by Exception Report (See page 3 – 46)
RLM_SCHEDULE_HEADERS_ALL	This table stores the header level details of the Release Management schedules. It has details pertaining to the specific schedule and customer level information. Release Management demand Processor uses this table to maintain a current picture of demand schedule headers. (See page 3 – 47)
RLM_SCHEDULE_LINES_ALL	This table stores the item and item detail level information associated with customer planning, shipping, or production sequenced schedules. For production sequence schedules, the item represents the feature, not the configuration. (See page 3 – 51)
RLM_SHIP_DELIVERY_CODES	This table stores the optional Shipment/Delivery Pattern Rules which can then be associated with the customer/item/destination. They are used in the Demand Stream Processor for splitting or consolidating daily or weekly customer requirements from planning and shipping schedules into discrete shipment date/quantity groups which consistently and accurately reflect the customer's expected shipment or delivery patterns. The Rule is in context of the customer-given date qualifier, i.e. delivery or shipment. (See page 3 – 63)
RLM_UI_QUERIES	This table stores the Names of all the Queries which are used in Release Workbench. It stores information about the Query such as the Owner of the Query, whether Query can be deleted or not. (See page 3 – 66)

RLM_UI_QUERY_COLUMNS

This table stores the details of Query Criteria for each of the Query in RLM_UI_QUERIES (See page 3 – 67)

Oracle Proprietary, Confidential Information--Use Restricted by Contract

Forms and Table View List

This section lists supplementary views that are not essential to the Release 11i data model, but simplify coding or improve performance of Developer. For example, many of these views are used as base tables in Oracle Release Management forms.



Warning: We do not recommend you query or alter data using these views. Furthermore, these views may change dramatically in subsequent minor or major releases of Oracle Release Management.

Oracle Release Management uses the following Forms and Table views:

- RLM_CUM_ADJ_DETAILS_V
- RLM_CUM_SHIPFR_CUST_ITEMS_V
- RLM_CUM_SHIPFR_SHIPTO_V
- RLM_CUM_SHIP_DETAILS_V
- RLM_CUM_SITE_USES_V
- RLM_CUSTOMERS_V
- RLM_CUSTOMER_TERMS_V
- RLM_CUST_INV_ITEM_V
- RLM_CUST_ITEM_CUM_ADJ_V
- RLM_CUST_ITEM_CUM_DETAILS_V
- RLM_CUST_ITEM_CUM_KEYS_V
- RLM_CUST_ITEM_TERMS_V
- RLM_CUST_SHIPTO_TERMS_V
- RLM_HRZ_SCHEDULE_LINES_V
- RLM_OE_ORDER_LINES_V
- RLM_SCHEDULE_DATES_V
- RLM_SCHEDULE_INTERFACE_HDR_V
- RLM_SCHEDULE_INTERFACE_LINES_V
- RLM_SCHEDULE_ITEMS_V
- RLM_SCHEDULE_LINE_CUM_V
- RLM_SHIPTO_ITEM_TERMS_V

Single Organization View List

Multi-Organization Support is a feature that allows you to implement multiple sets of books within a single installation of Oracle Payables, Oracle Receivables, Oracle Purchasing, and Oracle Order Entry/Shipping. Instead of using multiple installations to provide data security, data is secured by operating unit.

In Release 10.7, we added a column, `ORG_ID`, to each base table that requires "partitioning" by operating unit, including all transaction tables and many reference tables, then renamed these tables to end with the suffix `_ALL`. Then, to take the place of the renamed table, we create a view (named like the Release 10.6 or earlier table) containing a `WHERE` clause that automatically restricts data to a single operating unit. The `WHERE` clause relies upon the value of an Oracle global variable to indicate the current organization.

If you want to retrieve all information, regardless of operating unit, query the `_ALL` table. For example, if you are running a cross-organization report, you probably want to query the `_ALL` table.

However, if you want to report against only a single organization or operating unit, query the corresponding cross-organizational view, using the familiar 10.6-style table name. The view definition will automatically retrieve only data for your current operating unit.



Additional Information: *Multiple Organizations in Oracle Applications*

Oracle Release Management uses the following Single Organization views:

- `RLM_CUST_ITEM_CUM_ADJ`
- `RLM_CUST_ITEM_CUM_KEYS`
- `RLM_CUST_ITEM_TERMS`
- `RLM_CUST_SHIPTO_TERMS`
- `RLM_INTERFACE_HEADERS`
- `RLM_INTERFACE_LINES`
- `RLM_SCHEDULE_HEADERS`
- `RLM_SCHEDULE_LINES`

Oracle Proprietary, Confidential Information--Use Restricted by Contract

Module List

This section lists each form, report and concurrent program comprising Oracle Release Management.

Oracle Proprietary, Confidential Information--Use Restricted by Contract

CHAPTER

3

Detailed Design

This chapter presents a detailed design for implementing Oracle Release Management. It contains detailed definitions of tables and views that you may need to reference to write custom reports or use for other data extraction.

Overview of Detailed Design

During Detailed Design, we specify in detail how each applications component should work. We prepare detailed definitions of tables and views.

You can refer to this Detailed Design chapter to gain a detailed understanding of the underlying structure and processing of Oracle Release Management that enables you to:

- Convert existing application data
- Integrate your Oracle Release Management application with your other applications systems
- Write custom reports
- Define alerts against Oracle Applications tables
- Create views for decision support queries using query tools
- Configure your Oracle Self-Service Web Applications

Table and View Definitions

The Table and View Definitions section contains a detailed definition of Oracle Release Management applications tables. For each table, it provides information about primary keys, foreign keys, QuickCodes, indexes, triggers, and sequences. It also gives you a detailed description of each column and its characteristics. In addition, it provides the SQL statement that defines each view. Review this section to get a detailed understanding of what tables your Oracle Release Management application contains, and how it uses them to hold and access the information it needs.

Table and View Definitions

This section contains a detailed description of each Oracle Release Management table and view that you may need to reference. For each table, it presents detailed information about:

- Primary keys
- Foreign keys
- Column descriptions
- Indexes
- Oracle sequences
- Triggers
- View derivations

Because Oracle does not support customization of Oracle Application Object Library tables, we do not provide you with detailed information about them. Consequently, this section does not document all the FND_% tables your Oracle Release Management application uses.

The following sections appear in each table or view description:

Foreign Keys

To help you understand the relationships between tables, we list each foreign key contained in a table. For each foreign key in a table, we list the primary key table name (the table to which a foreign key refers), its corresponding primary key columns, and the foreign key columns that refer to those primary key columns.

When the primary key table has a composite primary key, we list each column of the composite key sequentially.

If a table contains two or more distinct foreign keys that refer to the same primary key table, we repeat the primary key table name and list each of the distinct foreign keys separately.

QuickCodes Columns

When a database column contains a QuickCodes value, which we implement using a foreign key to FND_LOOKUPS, MFG_LOOKUPS, or to some other lookup table, we list the QuickCodes type (lookup

Oracle Proprietary, Confidential Information--Use Restricted by Contract

type) to which the QuickCodes value must belong and a complete list of QuickCodes values and meanings. Some QuickCodes can be defined by you in the application. These values are designated as User-defined.

Column Descriptions

We list the important characteristics of each column in a table or view. These characteristics include whether the column is part of the table's primary key, whether Oracle8i requires a value for this column, and the data type of the column. We also give you a brief description of how your Oracle Release Management application uses the column.

When a column is part of a table's primary key, we append the notation (PK) to the name of that column.

To help you understand which columns your Oracle Release Management application uses and which columns it does not use, we alert you to any unused column. When no module uses a database column, we show one of the following legends in the Description column:

Not currently used	Your Oracle Release Management application does not use this column, although the column might be used in a future release.
No longer used	Your Oracle Release Management application no longer uses this column. AutoInstall installs this column. Subsequent versions of your Oracle Release Management application might not include this column.
No longer installed	Your Oracle Release Management application no longer uses this column. If you <i>upgraded</i> your software from an earlier version, you may still have this column, depending upon whether you chose to delete it during an upgrade process. If you <i>install</i> your Oracle Release Management application, you do not have this column.

Standard Who Columns

Most Oracle Release Management applications tables contain standard columns to support \ Row Who. When your program or SQL*Plus

Oracle Proprietary, Confidential Information--Use Restricted by Contract

command selects a row from a table, use these columns to determine who last updated the row. If your program or SQL*Plus command updates or inserts a row in an interface table, you must populate each of the five standard Who columns:

LAST_UPDATE_DATE	Date when a user last updated this row
LAST_UPDATED_BY	User who last updated this row (foreign key to FND_USER.USER_ID)
CREATION_DATE	Date when this row was created
CREATED_BY	User who created this row (foreign key to FND_USER.USER_ID)
LAST_UPDATE_LOGIN	Operating system login of user who last updated this row (foreign key to FND_LOGINS.LOGIN_ID). You should set this to NULL, or to 0 if NULL is not allowed

Since every table containing Who columns has several foreign keys to the tables FND_USER and FND_LOGINS, we do not include the foreign key columns LAST_UPDATED_BY, CREATED_BY, or LAST_UPDATE_LOGIN in a table's list of foreign keys.

Additional Who Columns for Concurrent Programs

Some Oracle Release Management applications tables also contain several additional Who columns to distinguish between changes a user makes with a form and changes a concurrent program makes. When a concurrent program updates or inserts a row in a table, the concurrent program populates the following additional Who columns:

REQUEST_ID	Concurrent request ID of program that last updated this row (foreign key to FND_CONCURRENT_REQUESTS.REQUEST_ID)
PROGRAM_APPLICATION_ID	Application ID of program that last updated this row (foreign key to FND_APPLICATION.APPLICATION_ID)
PROGRAM_ID	Program ID of program that last updated this row (foreign key to FND_CONCURRENT_PROGRAM.CONCURRENT_PROGRAM_ID)
PROGRAM_UPDATE_DATE	Date when a program last updated this row

Since every table containing these additional Who columns has several foreign keys to the tables FND_CONCURRENT_REQUESTS, FND_APPLICATION, and FND_CONCURRENT_PROGRAM, we do not include the foreign key columns REQUEST_ID, PROGRAM_APPLICATION_ID, or PROGRAM_ID in a table's list of foreign keys.

Indexes

If an Oracle Release Management applications table uses an Oracle8i index, we list the database columns that comprise that index, in sequential order.

Note: The indexes we document in this manual correspond to unique keys we specified during product development and testing. In some cases, we may add additional indexes during the porting process to fine-tune performance on specific platforms; therefore, there may be minor differences between the indexes documented in this book and the indexes for production versions of Oracle Release Management.

Sequences

Your Oracle Release Management application uses Oracle8i sequence generators to generate unique integers. If any table column gets its value from an Oracle8i sequence generator, we list the name of the corresponding sequence generator and the name of the column that stores the unique integer.

Database Triggers

If a table has one or more active database triggers, we provide a brief explanation of each database trigger and when it fires.

View Derivation

For each Oracle Release Management applications view you may need to reference, we include important elements from the SQL statement

Oracle Proprietary, Confidential Information--Use Restricted by Contract

that defines or creates a view. By studying this view definition, you can understand exactly how a view derives its contents.

RLM_CUST_ITEM_CUM_ADJ_ALL

This table stores adjustments to the cum for all RLM customer destination items. It has a child relationship to RLM_CUST_ITEM_CUM_KEYS. The adjustments reflect manual CUM adjustment via a form in the Release Management module. If CUM Management is enabled, the adjustments in this table, along with the shipping transaction information from the Shipping Module, are used in the Demand Stream Processor and Shipping applications to dynamically calculate the supplier CUM according to the CUM calculation rules defined for the customer destination. The contents of this table are displayed in the CUM Management Workbench.

Column Descriptions

Name	Null?	Type	Description
CUM_ADJ_ID	NOT NULL	NUMBER	Unique identifier for CUM Adjustment transaction
CUM_KEY_ID	NOT NULL	NUMBER	Customer Item cum KEY unique ID. FK to RLM_CUST_ITEM_CUM_KEYS
TRANSACTION_DATE_TIME	NOT NULL	DATE	Transaction date/time
ADJUSTMENT_REASON	NULL	VARCHAR2(30)	Validated against MTL_TRANSACTION_REASONS.REASON_NAME
ORG_ID	NULL	NUMBER	Operating unit ID
ADJUSTMENT_REFERENCE	NULL	VARCHAR2(240)	Comment field
TRANSACTION_QTY	NULL	NUMBER	Transaction quantity expressed in the UOM on the CUM Key; for shipment transactions, this is the summarized quantity of all order lines shipped for this item associated with the shipment number; for ATO items, the summary of the features/components
LAST_UPDATE_DATE	NOT NULL	DATE	Standard Who column
LAST_UPDATED_BY	NOT NULL	NUMBER	Standard Who column
CREATION_DATE	NOT NULL	DATE	Standard Who column
CREATED_BY	NOT NULL	NUMBER	Standard Who column
ATTRIBUTE_CATEGORY	NULL	VARCHAR2(30)	Descriptive Flexfield context column
ATTRIBUTE1	NULL	VARCHAR2(150)	Descriptive Flexfield segment column
ATTRIBUTE2	NULL	VARCHAR2(150)	Descriptive Flexfield segment column
ATTRIBUTE3	NULL	VARCHAR2(150)	Descriptive Flexfield segment column
ATTRIBUTE4	NULL	VARCHAR2(150)	Descriptive Flexfield segment column
ATTRIBUTE5	NULL	VARCHAR2(150)	Descriptive Flexfield segment column
ATTRIBUTE6	NULL	VARCHAR2(150)	Descriptive Flexfield segment column
ATTRIBUTE7	NULL	VARCHAR2(150)	Descriptive Flexfield segment column
ATTRIBUTE8	NULL	VARCHAR2(150)	Descriptive Flexfield segment column

Oracle Proprietary, Confidential Information--Use Restricted by Contract

ATTRIBUTE9	NULL	VARCHAR2(150)	Descriptive Flexfield segment column
ATTRIBUTE10	NULL	VARCHAR2(150)	Descriptive Flexfield segment column
ATTRIBUTE11	NULL	VARCHAR2(150)	Descriptive Flexfield segment column
ATTRIBUTE12	NULL	VARCHAR2(150)	Descriptive Flexfield segment column
ATTRIBUTE13	NULL	VARCHAR2(150)	Descriptive Flexfield segment column
ATTRIBUTE14	NULL	VARCHAR2(150)	Descriptive Flexfield segment column
ATTRIBUTE15	NULL	VARCHAR2(150)	
LAST_UPDATE_LOGIN	NULL	NUMBER	Standard Who column
REQUEST_ID	NULL	NUMBER	Standard Who column
PROGRAM_APPLICATION_ID	NULL	NUMBER	Standard Who Column
PROGRAM_ID	NULL	NUMBER	Standard Who column
PROGRAM_UPDATE_DATE	NULL	DATE	Standard Who column
TP_ATTRIBUTE1	NULL	VARCHAR2(150)	Trading partner flexfield segment column
TP_ATTRIBUTE2	NULL	VARCHAR2(150)	Trading partner flexfield segment column
TP_ATTRIBUTE3	NULL	VARCHAR2(150)	Trading partner flexfield segment column
TP_ATTRIBUTE4	NULL	VARCHAR2(150)	Trading partner flexfield segment column
TP_ATTRIBUTE5	NULL	VARCHAR2(150)	Trading partner flexfield segment column
TP_ATTRIBUTE6	NULL	VARCHAR2(150)	Trading partner flexfield segment column
TP_ATTRIBUTE7	NULL	VARCHAR2(150)	Trading partner flexfield segment column
TP_ATTRIBUTE8	NULL	VARCHAR2(150)	Trading partner flexfield segment column
TP_ATTRIBUTE9	NULL	VARCHAR2(150)	Trading partner flexfield segment column
TP_ATTRIBUTE10	NULL	VARCHAR2(150)	Trading partner flexfield segment column
TP_ATTRIBUTE11	NULL	VARCHAR2(150)	Trading partner flexfield segment column
TP_ATTRIBUTE12	NULL	VARCHAR2(150)	Trading partner flexfield segment column
TP_ATTRIBUTE13	NULL	VARCHAR2(150)	Trading partner flexfield segment column
TP_ATTRIBUTE14	NULL	VARCHAR2(150)	Trading partner flexfield segment column
TP_ATTRIBUTE15	NULL	VARCHAR2(150)	Trading partner flexfield segment column
TP_ATTRIBUTE_CATEGORY	NULL	VARCHAR2(30)	Trading partner flexfield segment column

RLM_CUST_ITEM_CUM_KEYS_ALL

This table stores the CUM key values associated with a particular ship-to/ship-from/item combination according to the CUM Management rules defined for the trading partners which are supported in Oracle Release Management. ? If CUM Management is enabled, this table defines the entity for which a CUM would be calculated: i.e. there is one row in this table for every bill-to, ship-to, ship-from, item, CUM key combination. The CUM key will vary by customer; in addition to ship-to, ship-from, and item, it could include any combination of CUM starting date, Purchase Order Number, or Record keeping year. If CUM Management is enabled, related child rows in RLM_CUST_ITEM_CUM_ADJ will indicate all adjustment transactions between the two trading partners related to this specific customer-defined accumulation grouping only, e.g. for this PO only, for this record keeping year only. ? If CUM Management is disabled, this table is not populated. ? In an FBO environment, there would be a row for each component used for the customer, since the top model number, i.e. end item, does not need cum management. Rows in this table are automatically inserted as needed by the Shipping functions or manually entered in the CUM Adjustment Transaction form. This table has a child relationship to RLM_SHIP_FROM_CUST_ITEMS, and a parent relationship to RLM_CUST_ITEM_CUM_ADJ.

Column Descriptions

Name	Null?	Type	Description
CUM_KEY_ID	NOT NULL	NUMBER	Customer Item cum KEY unique ID
CUSTOMER_ITEM_ID	NOT NULL	NUMBER	Customer Item unique ID. FK to MTL_CUSTOMER_ITEMS
SHIP_TO_ADDRESS_ID	NULL	NUMBER	Ship to Address unique ID, if the customer-side CUM Org Level defined for the Ship-from/Ship-to relationship to which this cum key belongs is Ship-to. One of the three address Ids (Ship to, Bill to, or Intermediate Ship to) must be specified
BILL_TO_ADDRESS_ID	NULL	NUMBER	Bill to Address unique ID, if the customer-side CUM Org Level defined for the Ship-from/Ship-to relationship to which this cum key belongs is Bill-to. One of the three address Ids (Ship to, Bill to, or Intermediate Ship to) must be specified.

Oracle Proprietary, Confidential Information--Use Restricted by Contract

INTRMD_SHIP_TO_ID	NULL	NUMBER	Intermediate Ship to Address unique ID, if the customer-side CUM Org Level defined for the Ship-from/Ship-to relationship to which this cum key belongs is ?Intermediate Ship to?. One of the three address Ids (Ship to, Bill to, or Intermediate Ship to) must be specified.
SHIP_FROM_ORG_ID	NULL	NUMBER	Ship-from organization unique ID. FK to MTL_PARAMETERS. Null only if CUM Org Level is SHIP_TO_ALL_SHIP_FROMS
CUM_START_DATE	NULL	DATE	Ship-from organization unique ID. FK to MTL_PARAMETERS. Null only if CUM Org Level is SHIP_TO_ALL_SHIP_FROMS
CUST_RECORD_YEAR	NULL	VARCHAR2(35)	If CUM management is being done with Record keeping year significance, the specific record keeping year associated with the cum period
ORG_ID	NULL	NUMBER	Operating unit unique ID. FK to HR_ORGANIZATION_UNITS.
PURCHASE_ORDER_NUMBER	NULL	VARCHAR2(50)	If CUM management is being done with purchase order significance, the specific PO to which this CUM belongs
CUST_UOM_CODE	NULL	VARCHAR2(3)	Unit of measure used for CUM calculations related to this CUM Key. FK to MTL_UNITS_OF_MEASURE
CUM_QTY	NULL	NUMBER	Indicates CUM calculated quantity as per shipment inclusion rule. This column can be used directly, without any further processing, to display current CUM.
CUM_QTY_AFTER_CUTOFF	NULL	NUMBER	
CUM_QTY_TO_BE_ACCUMULATED	NULL	NUMBER	Indicates all shipments made for this CUM Key, which are not included in CUM_QTY due to shipment inclusion rule and not included in CUM_QTY_AFTER_CUTOFF. This quantity gets added to CUM_QTY on next shipment or next day, depending on the shipment inclusion rule, when LAST_CUM_QTY_UPDATE_DATE is less than the ?CUM as-of date and time?
LAST_CUM_QTY_UPDATE_DATE	NULL	DATE	The date/time when CUM_QTY was last updated by shipments and adjustments
LAST_UPDATE_DATE	NOT NULL	DATE	Standard Who column
LAST_UPDATED_BY	NOT NULL	NUMBER	Standard Who column
CREATION_DATE	NOT NULL	DATE	Standard Who column
CREATED_BY	NOT NULL	NUMBER	Standard Who column
ATTRIBUTE_CATEGORY	NULL	VARCHAR2(30)	Descriptive Flexfield context column
ATTRIBUTE1	NULL	VARCHAR2(150)	Descriptive Flexfield segment column
ATTRIBUTE2	NULL	VARCHAR2(150)	Descriptive Flexfield segment column

ATTRIBUTE3	NULL	VARCHAR2(150)	Descriptive Flexfield segment column
ATTRIBUTE4	NULL	VARCHAR2(150)	Descriptive Flexfield segment column
ATTRIBUTE5	NULL	VARCHAR2(150)	Descriptive Flexfield segment column
ATTRIBUTE6	NULL	VARCHAR2(150)	Descriptive Flexfield segment column
ATTRIBUTE7	NULL	VARCHAR2(150)	Descriptive Flexfield segment column
ATTRIBUTE8	NULL	VARCHAR2(150)	Descriptive Flexfield segment column
ATTRIBUTE9	NULL	VARCHAR2(150)	Descriptive Flexfield segment column
ATTRIBUTE10	NULL	VARCHAR2(150)	Descriptive Flexfield segment column
ATTRIBUTE11	NULL	VARCHAR2(150)	Descriptive Flexfield segment column
ATTRIBUTE12	NULL	VARCHAR2(150)	Descriptive Flexfield segment column
ATTRIBUTE13	NULL	VARCHAR2(150)	Descriptive Flexfield segment column
ATTRIBUTE14	NULL	VARCHAR2(150)	Descriptive Flexfield segment column
ATTRIBUTE15	NULL	VARCHAR2(150)	Descriptive Flexfield segment column
LAST_UPDATE_LOGIN	NULL	NUMBER	Standard Who column
REQUEST_ID	NULL	NUMBER	Standard Who column
PROGRAM_APPLICATION_ID	NULL	NUMBER	Standard Who column
PROGRAM_ID	NULL	NUMBER	Standard Who column
PROGRAM_UPDATE_DATE	NULL	DATE	Standard Who column
TP_ATTRIBUTE1	NULL	VARCHAR2(150)	Trading Partner Flexfield segment column
TP_ATTRIBUTE2	NULL	VARCHAR2(150)	Trading Partner Flexfield segment column
TP_ATTRIBUTE3	NULL	VARCHAR2(150)	Trading Partner Flexfield segment column
TP_ATTRIBUTE4	NULL	VARCHAR2(150)	Trading Partner Flexfield segment column
TP_ATTRIBUTE5	NULL	VARCHAR2(150)	Trading Partner Flexfield segment column
TP_ATTRIBUTE6	NULL	VARCHAR2(150)	Trading Partner Flexfield segment column
TP_ATTRIBUTE7	NULL	VARCHAR2(150)	Trading Partner Flexfield segment column
TP_ATTRIBUTE8	NULL	VARCHAR2(150)	Trading Partner Flexfield segment column
TP_ATTRIBUTE9	NULL	VARCHAR2(150)	Trading Partner Flexfield segment column
TP_ATTRIBUTE10	NULL	VARCHAR2(150)	Trading Partner Flexfield segment column
TP_ATTRIBUTE11	NULL	VARCHAR2(150)	Trading Partner Flexfield segment column
TP_ATTRIBUTE12	NULL	VARCHAR2(150)	Trading Partner Flexfield segment column
TP_ATTRIBUTE13	NULL	VARCHAR2(150)	Trading Partner Flexfield segment column
TP_ATTRIBUTE14	NULL	VARCHAR2(150)	Trading Partner Flexfield segment column
TP_ATTRIBUTE15	NULL	VARCHAR2(150)	Trading Partner Flexfield segment column
TP_ATTRIBUTE_CATEGORY	NULL	VARCHAR2(30)	Trading Partner Flexfield segment column

Oracle Proprietary, Confidential Information--Use Restricted by Contract

Indexes

<u>Index Name</u>	<u>Index Type</u>	<u>Sequence</u>	<u>Column Name</u>
RLM_CUST_ITEM_CUM_KEYS_U1	UNIQUE	5	SHIP_FROM_ORG_ID
		10	SHIP_TO_ADDRESS_ID
		15	BILL_TO_ADDRESS_ID
		20	INTRMD_SHIP_TO_ID
		25	CUSTOMER_ITEM_ID
		30	CUM_START_DATE
		35	CUST_RECORD_YEAR
		40	PURCHASE_ORDER_NUMBER

RLM_CUST_ITEM_TERMS_ALL

This table contains new R-12 customer item attributes which are dependent upon the Ship-From Customer Item relationship. Some attributes from Phase 1 were carried forward from VEH_MTL_CUSTOMER_ITEMS, which is being eliminated in Phase 2.

Column Descriptions

Name	Null?	Type	Description
CUST_ITEM_TERMS_ID	NOT NULL	NUMBER	Ship From Customer Item Unique Identifier
CUSTOMER_ITEM_ID	NOT NULL	NUMBER	Customer Item unique identifier. FK to MTL_CUSTOMER_ITEMS.
SHIP_FROM_ORG_ID	NOT NULL	NUMBER	Ship from organization unique identifier. FK to RLM_CUST_SHIPTO_TERMS_ALL
ADDRESS_ID	NULL	NUMBER	Address unique identifier. FK to RLM_CUST_SHIPTO_TERMS_ALL.
HEADER_ID	NULL	NUMBER	Unique identifier of the sales order to which the customer item is linked. Demand for this item is placed this sales order by the Release Management demand processor. It will be cleared if the Sales Order is purged. FK to OE_ORDER_HEADERS
AGREEMENT_NAME	NULL	VARCHAR2(30)	The Pricing Agreement contract with the customer. The Demand Stream Processor will use this to determine Customer PO Number and pricing. FK to SO_AGREEMENTS
FUTURE_AGREEMENT_NAME	NULL	VARCHAR2(30)	The future Pricing Agreement contract with the customer to be used when the current Pricing Agreement expires. The Demand Stream Processor will use this to determine Customer PO Number and pricing. FK to SO_AGREEMENTS.
CALC_CUM_FLAG	NULL	VARCHAR2(1)	Flag to indicate, if the ship from is under cum management, whether or not cums should be calculated for this particular item
CUM_CURRENT_START_DATE	NULL	DATE	Current CUM calculation starting date if CUM_CONTROL_CODE = CUM_UNTIL_MANUAL_RESET
CUM_PREVIOUS_START_DATE	NULL	DATE	Previous CUM calculation starting date if CUM_CONTROL_CODE = CUM_UNTIL_MANUAL_RESET. To be used in building the CUM key if shipment date is earlier than Current CUM calculation starting date

Oracle Proprietary, Confidential Information--Use Restricted by Contract

CUST_ITEM_STATUS_CODE	NULL	VARCHAR2(25)	Current Release status of the item, e.g. prototype, production, non-carryover for reporting purposes; this is updated by the material planner, not the EDI transaction. This column can be a selection criteria for future RLM reports. This column is a foreign key to the MTL_ITEM_STATUS table.
ROUND_TO_STD_PACK_FLAG	NULL	VARCHAR2(1)	Indicates whether requirements should be rounded up to standard packs. If set on, the additional quantity to fill the std pack is subtracted from the next oldest requirement to avoid most overshipments
SHIP_DELIVERY_RULE_NAME	NULL	VARCHAR2(30)	If populated, identifies the shipment /delivery pattern code to be used when calculating the specific shipment dates from the customer release transactions for this item. FK to RLM_SHIP_DELIVERY_CODES
SHIP_METHOD	NULL	VARCHAR2(30)	Unique identifier for the shipment method. FK to MTL_INTERORG_SHIP_METHODS
INTRANSIT_TIME	NULL	NUMBER	In-transit Lead Time between ship-from and ship-to locations, based on default ship method and expressed in time UOM
STD_PACK_QTY	NULL	NUMBER	If the requirements should be rounded up to standard packs in the Demand Processor, the quantity per pack expressed in the customer UOM.
TIME_UOM_CODE	NULL	VARCHAR2(3)	UOM in which in-transit lead time is expressed
ORG_ID	NULL	NUMBER	Operating unit unique ID. FK to HR_ORGANIZATION_UNITS.
PRICE_LIST_ID	NULL	NUMBER	Unique identifier for price list associated with customer item if pricing agreement is not used. FK to RA_PRICE_LISTS
DEMAND_TOLERANCE_ABOVE	NULL	NUMBER	Positive tolerance (high end) for changes to Customer Item demand.
USE_EDI_SDP_CODE_FLAG	NOT NULL	VARCHAR2(1)	Flag that indicates whether you want to use the ship delivery pattern code that the customer sends in on the EDI transactions, if it is populated.
LAST_UPDATE_DATE	NOT NULL	DATE	Standard Who column
LAST_UPDATED_BY	NOT NULL	NUMBER	Standard Who column
CREATION_DATE	NOT NULL	DATE	Standard Who column
CREATED_BY	NOT NULL	NUMBER	Standard Who column
PLN_FIRM_DAY_TO	NULL	NUMBER	Last day from the Planning Schedule horizon start date to which demand will be considered Firm (Shippable).
ATTRIBUTE_CATEGORY	NULL	VARCHAR2(30)	Descriptive Flexfield context column

PLN_FORECAST_DAY_FROM	NULL	NUMBER	First day from the Planning Schedule horizon start date from which demand will be considered Forecast
PLN_FORECAST_DAY_TO	NULL	NUMBER	Last day from the Planning Schedule horizon start date to which demand will be considered Forecast
PLN_FROZEN_DAY_TO	NULL	NUMBER	Last day from the Planning Schedule horizon start date to which demand will be considered Forecast
PLN_FROZEN_DAY_FROM	NULL	NUMBER	First day from the Planning Schedule horizon start date from which demand will be considered Frozen (cannot be changed).
ATTRIBUTE1	NULL	VARCHAR2(150)	Descriptive Flexfield context column
SEQ_FIRM_DAY_FROM	NULL	NUMBER	First day from the Sequenced Schedule horizon start date from which demand will be considered Firm (Shippable)
SEQ_FIRM_DAY_TO	NULL	NUMBER	Last day from the Sequenced Schedule horizon start date to which demand will be considered Firm (Shippable).
ATTRIBUTE2	NULL	VARCHAR2(150)	Descriptive Flexfield context column
SEQ_FORECAST_DAY_TO	NULL	NUMBER	Last day from the Sequenced Schedule horizon start date to which demand will be considered Forecast
SEQ_FORECAST_DAY_FROM	NULL	NUMBER	First day from the Sequenced Schedule horizon start date from which demand will be considered Forecast
ATTRIBUTE3	NULL	VARCHAR2(150)	Descriptive Flexfield context column
SEQ_FROZEN_DAY_FROM	NULL	NUMBER	First day from the Sequenced Schedule horizon start date from which demand will be considered Frozen (cannot be changed)
SEQ_FROZEN_DAY_TO	NULL	NUMBER	Last day from the Sequenced Schedule horizon start date to which demand will be considered Frozen (cannot be changed)
ATTRIBUTE4	NULL	VARCHAR2(150)	Descriptive Flexfield context column
SHP_FIRM_DAY_FROM	NULL	NUMBER	First day from the Shipping Schedule horizon start date from which demand will be considered Firm (Shippable).
SHP_FIRM_DAY_TO	NULL	NUMBER	Last day from the Shipping Schedule horizon start date to which demand will be considered Firm (Shippable) .
ATTRIBUTE5	NULL	VARCHAR2(150)	Descriptive Flexfield context column
SHP_FROZEN_DAY_TO	NULL	NUMBER	Last day from the Shipping Schedule horizon start date to which demand will be considered Forecast

Oracle Proprietary, Confidential Information--Use Restricted by Contract

SHP_FROZEN_DAY_FROM	NULL	NUMBER	First day from the Shipping Schedule horizon start date from which demand will be considered Frozen (cannot be changed).
ATTRIBUTE6	NULL	VARCHAR2(150)	Descriptive Flexfield context column
SHP_FORECAST_DAY_TO	NULL	NUMBER	Last day from the Shipping Schedule horizon start date to which demand will be considered Firm (Shippable)
SHP_FORECAST_DAY_FROM	NULL	NUMBER	First day from the Shipping Schedule horizon start date from which demand will be considered Forecast.
ATTRIBUTE7	NULL	VARCHAR2(150)	Descriptive Flexfield context column
ATTRIBUTE8	NULL	VARCHAR2(150)	Descriptive Flexfield context column
ATTRIBUTE9	NULL	VARCHAR2(150)	Descriptive Flexfield context column
ATTRIBUTE10	NULL	VARCHAR2(150)	Descriptive Flexfield context column
ATTRIBUTE11	NULL	VARCHAR2(150)	Descriptive Flexfield context column
ATTRIBUTE12	NULL	VARCHAR2(150)	Descriptive Flexfield context column
ATTRIBUTE13	NULL	VARCHAR2(150)	Descriptive Flexfield context column
ATTRIBUTE14	NULL	VARCHAR2(150)	Descriptive Flexfield context column
ATTRIBUTE15	NULL	VARCHAR2(150)	Descriptive Flexfield context column
LAST_UPDATE_LOGIN	NULL	NUMBER	Standard Who column
REQUEST_ID	NULL	NUMBER	Standard Who column
PROGRAM_APPLICATION_ID	NULL	NUMBER	Standard Who column
PROGRAM_ID	NULL	NUMBER	Standard Who column
PROGRAM_UPDATE_DATE	NULL	DATE	Standard Who column
DEMAND_TOLERANCE_BELOW	NULL	NUMBER	Negative tolerance (low end) for changes to Customer Item demand
CUSTOMER_CONTACT_ID	NULL	NUMBER	Customer Contact. FK to RA_CONTACTS
CUSTOMER_ID	NOT NULL	NUMBER	Customer unique identifier. FK to RA_CUSTOMERS
FREIGHT_CODE	NULL	VARCHAR2(25)	Default freight code or carrier, to be used by the demand processor to populate the freight carrier on the inbound demand. This can be defaulted from the profile option RLM_default_carrier. FK to ORG_FREIGHT.
PLN_FIRM_DAY_FROM	NULL	NUMBER	First day from the Planning Schedule horizon start date from which demand will be considered Firm (Shippable).
SUPPLIER_CONTACT_ID	NULL	NUMBER	Supplier Contact. FK to PER_PEOPLE_F
TP_ATTRIBUTE1	NULL	VARCHAR2(150)	Trading Partner Flexfield Segment column
TP_ATTRIBUTE2	NULL	VARCHAR2(150)	Trading Partner Flexfield Segment column
TP_ATTRIBUTE3	NULL	VARCHAR2(150)	Trading Partner Flexfield Segment column

Oracle Proprietary, Confidential Information--Use Restricted by Contract

TP_ATTRIBUTE4	NULL	VARCHAR2(150)	Trading Partner Segment	Flexfield column
TP_ATTRIBUTE5	NULL	VARCHAR2(150)	Trading Partner Segment	Flexfield column
TP_ATTRIBUTE6	NULL	VARCHAR2(150)	Trading Partner Segment	Flexfield column
TP_ATTRIBUTE7	NULL	VARCHAR2(150)	Trading Partner Segment	Flexfield column
TP_ATTRIBUTE8	NULL	VARCHAR2(150)	Trading Partner Segment	Flexfield column
TP_ATTRIBUTE9	NULL	VARCHAR2(150)	Trading Partner Segment	Flexfield column
TP_ATTRIBUTE10	NULL	VARCHAR2(150)	Trading Partner Segment	Flexfield column
TP_ATTRIBUTE11	NULL	VARCHAR2(150)	Trading Partner Segment	Flexfield column
TP_ATTRIBUTE12	NULL	VARCHAR2(150)	Trading Partner Segment	Flexfield column
TP_ATTRIBUTE13	NULL	VARCHAR2(150)	Trading Partner Segment	Flexfield column
TP_ATTRIBUTE14	NULL	VARCHAR2(150)	Trading Partner Segment	Flexfield column
TP_ATTRIBUTE15	NULL	VARCHAR2(150)	Trading Partner Segment	Flexfield column
TP_ATTRIBUTE_CATEGORY	NULL	VARCHAR2(30)	Trading Partner Segment	Flexfield column
INACTIVE_DATE	NULL	DATE		
COMMENTS	NULL	VARCHAR2(240)		
PLN_MRP_FORECAST_DAY_FROM	NULL	NUMBER		
PLN_MRP_FORECAST_DAY_TO	NULL	NUMBER		
SHP_MRP_FORECAST_DAY_FROM	NULL	NUMBER		
SHP_MRP_FORECAST_DAY_TO	NULL	NUMBER		
SEQ_MRP_FORECAST_DAY_FROM	NULL	NUMBER		
SEQ_MRP_FORECAST_DAY_TO	NULL	NUMBER		

Indexes

Index Name	Index Type	Sequence	Column Name
RLM_CUST_ITEM_TERMS_N1	NOT UNIQUE	5	CUSTOMER_ITEM_ID
RLM_CUST_ITEM_TERMS_U1	UNIQUE	5	CUST_ITEM_TERMS_ID
RLM_CUST_ITEM_TERMS_U2	NOT UNIQUE	1	CUSTOMER_ITEM_ID
		2	SHIP_FROM_ORG_ID
		3	CUSTOMER_ID
		4	ADDRESS_ID

RLM_CUST_SHIPTO_TERMS_ALL

This table contains new R-12 customer address attributes which are dependent upon the ship-from/ship-to relationship. Some attributes from Phase 1 were carried forward from VEH_RA_ADDRESSES, which is being eliminated in Phase 2. This table has one row for each ship-from location associated with a ship-to address.

Column Descriptions

Name	Null?	Type	Description
CUST_SHIPTO_TERMS_ID	NOT NULL	NUMBER	Customer Ship To Terms unique Identifier
ADDRESS_ID	NULL	NUMBER	Ship-To Address unique identifier. FK to RA_ADDRESSES
CUSTOMER_ID	NULL	NUMBER	Customer unique identifier. FK to RA_CUSTOMERS
SHIP_FROM_ORG_ID	NOT NULL	NUMBER	Ship-from Organization unique identifier. FK to MTL_PARAMETERS
CUM_CONTROL_CODE	NOT NULL	VARCHAR2(30)	CUM Management control code. Determines if and how CUM Management is done with this customer address shipments. If CUM Management is done by Purchase Order, the PO number must be included for every item in shipment. If CUM Management is done by Record keeping year, the current Record keeping year must be included in every shipment.. Validated against FND_LOOKUPS.LOOKUP_TYPE = RLM_CUM_CONTROL_CODE
SHIP_METHOD	NULL	VARCHAR2(30)	Unique identifier for the shipment method. FK to MTL_INTERORG_SHIP_METHODS
INTRANSIT_TIME	NULL	NUMBER	In-transit Lead Time between ship-from and ship-to locations, based on default ship method and expressed in time UOM
TIME_UOM_CODE	NULL	VARCHAR2(3)	UOM in which in-transit lead time is expressed
SHIP_DELIVERY_RULE_NAME	NOT NULL	VARCHAR2(30)	Default shipment/delivery rule name for this customer address. FK to RLM_SHIP_DELIVERY_CODES
CUM_CURRENT_RECORD_YEAR	NULL	VARCHAR2(35)	Customer Current Record keeping year code if applicable to CUM_CONTROL_CODE value. It will be attached to all items on ASNs to this destination
CUM_PREVIOUS_RECORD_YEAR	NULL	VARCHAR2(240)	Customer Previous Record keeping year code if applicable to CUM_CONTROL_CODE value. It will be attached to all items on ASNs to this destination
CUM_CURRENT_START_DATE	NULL	DATE	Current CUM calculation starting date if applicable to CUM_CONTROL_CODE value. It will be attached to all items on ASNs to this destination.

CUM_PREVIOUS_START_DATE	NULL	DATE	Previous CUM calculation starting date if applicable to CUM_CONTROL_CODE value. To be used in building the CUM key if shipment date is earlier than Current CUM calculation starting date
CUM_ORG_LEVEL_CODE	NULL	VARCHAR2(30)	If CUM Management is on, is the business entity levels at which the cum is calculated between the customer and supplier) Validated against FND_LOOKUPS.LOOKUP_TYPE = RLM_CUM_ORG_LEVEL
CUM_SHIPMENT_RULE_CODE	NULL	VARCHAR2(30)	If CUM Management is on, this specifies the most recent shipment which should be included in CUM: current, last, or yesterday shipment.. Validated against FND_LOOKUPS.LOOKUP_TYPE = RLM_CUM_SHIPMENT_RULE
CUM_YESTERD_TIME_CUTOFF	NULL	NUMBER	If CUM Management is on, and yesterday shipment. is the last shipment to include, this is the cutoff time for yesterday shipments to be included
CUST_ASSIGN_SUPPLIER_CD	NULL	VARCHAR2(35)	The code the customer uses to identify you as a supplier, transmitted by the customer in the N1 segment
CUSTOMER_RCV_CALENDAR_CD	NULL	VARCHAR2(10)	Customer receiving calendar code. Used in conjunction with the supplier shipment calendar code. If populated, the Demand Stream Processor will use this calendar when applying ship/delivery pattern rules to ensure the customer site is open for receiving on a calculated shipment arrival date. FK to BOM_CALENDARS
FREIGHT_CODE	NULL	VARCHAR2(25)	Default freight code, to be used by the demand processor to populate the freight carrier on the inbound demand. This can be defaulted from the profile option RLM_default_carrier. FK to ORG_FREIGHT
SUPPLIER_SHP_CALENDAR_CD	NULL	VARCHAR2(10)	Supplier shipping calendar code. If populated, the Demand Stream Processor will use this calendar when applying ship/delivery pattern rules and lead time offsets to ensure the supplier site is available for shipping on calculated scheduled shipment date. FK to BOM_CALENDARS
UNSHIP_FIRM_CUTOFF_DAYS	NULL	NUMBER	If UNSHIPPED_FIRM_DISP_CD = DELETE_AFTER_N_DAYS, the number of days before the current date where the requirement is eligible for cancellation..

UNSHIPPED_FIRM_DISP_CD	NULL	VARCHAR2(30)	Indicates disposition of old unshipped firm demand when the Demand Stream Processor has new immediate firm demand, since this type of demand cannot be accurately matched by date/quantity. Validated against FND_LOOKUPS.LOOKUP_TYPE = RLM_FIRM_DISP_CODE
USE EDI_SDP_CODE_FLAG	NOT NULL	VARCHAR2(1)	Flag that indicates whether you want to use the ship delivery pattern code that the customer sends in on the EDI transactions, if it is populated
DEMAND_TOLERANCE_ABOVE	NULL	NUMBER	Positive tolerance (high end) for changes to Customer Item demand
DEMAND_TOLERANCE_BELOW	NULL	NUMBER	Negative tolerance (low end) for changes to Customer Item demand
INACTIVE_DATE	NULL	DATE	Date when this ship from/ship to terms relationship is no longer active
HEADER_ID	NULL	NUMBER	Unique identifier of the default sales order to which the customer item is linked. Demand for items is placed on this sales order by the Release Management demand processor unless a different SO is specified at the ship-from customer item level. It will be cleared if the Sales Order is purged. FK to OE_ORDER_HEADERS
ORG_ID	NULL	NUMBER	Operating unit unique ID. FK to HR_ORGANIZATION_UNITS
PRICE_LIST_ID	NULL	NUMBER	Unique identifier for default price list associated with this ship-from/ship-to relationship if pricing agreement contract is not used. FK to RA_PRICE_LISTS
CRITICAL_ATTRIBUTE_KEY	NULL	VARCHAR2(80)	ASCII string of characters which identify the optional matching attributes which are enabled as critical attributes, which must contain a value for the Demand Processor. An exception (warning) will be generated if one of these is missing on Firm demand.
CUSTOMER_CONTACT_ID	NULL	NUMBER	Customer Contact. FK to RA_CONTACTS
PLN_FIRM_DAY_FROM	NULL	NUMBER	First day from the Planning Schedule horizon start date from which demand will be considered Firm (Shippable).
PLN_FIRM_DAY_TO	NULL	NUMBER	Last day from the Planning Schedule horizon start date to which demand will be considered Firm (Shippable).
PLN_FORECAST_DAY_FROM	NULL	NUMBER	First day from the Planning Schedule horizon start date from which demand will be considered Forecas

PLN_FORECAST_DAY_TO	NULL	NUMBER	Last day from the Planning Schedule horizon start date to which demand will be considered Forecast.
PLN_FROZEN_DAY_TO	NULL	NUMBER	Last day from the Planning Schedule horizon start date to which demand will be considered Frozen (cannot be changed).
PLN_FROZEN_DAY_FROM	NULL	NUMBER	First day from the Planning Schedule horizon start date from which demand will be considered Frozen (cannot be changed).
SEQ_FIRM_DAY_FROM	NULL	NUMBER	First day from the Sequenced Schedule horizon start date from which demand will be considered Firm (Shippable) .
SEQ_FIRM_DAY_TO	NULL	NUMBER	Last day from the Sequenced Schedule horizon start date to which demand will be considered Firm (Shippable).
SEQ_FORECAST_DAY_TO	NULL	NUMBER	Last day from the Sequenced Schedule horizon start date to which demand will be considered Forecast
SEQ_FORECAST_DAY_FROM	NULL	NUMBER	First day from the Sequenced Schedule horizon start date from which demand will be considered Forecast
SEQ_FROZEN_DAY_FROM	NULL	NUMBER	First day from the Sequenced Schedule horizon start date from which demand will be considered Frozen (cannot be changed)
SEQ_FROZEN_DAY_TO	NULL	NUMBER	Last day from the Sequenced Schedule horizon start date to which demand will be considered Frozen (cannot be changed)
SHF_FIRM_DAY_FROM	NULL	NUMBER	First day from the Shipping Schedule horizon start date from which demand will be considered Firm (Shippable).
SHF_FIRM_DAY_TO	NULL	NUMBER	Last day from the Shipping Schedule horizon start date to which demand will be considered Firm (Shippable) .
SHF_FROZEN_DAY_TO	NULL	NUMBER	Last day from the Shipping Schedule horizon start date to which demand will be considered Frozen (cannot be changed).
SHF_FROZEN_DAY_FROM	NULL	NUMBER	First day from the Shipping Schedule horizon start date from which demand will be considered Frozen (cannot be changed).
SHF_FORECAST_DAY_TO	NULL	NUMBER	Last day from the Shipping Schedule horizon start date to which demand will be considered Forecast.
ROUND_TO_STD_PACK_FLAG	NULL	VARCHAR2(1)	Round to Standard Pack Flag
SUPPLIER_CONTACT_ID	NULL	NUMBER	Supplier Contact. FK to PER_PEOPLE_F.

Oracle Proprietary, Confidential Information--Use Restricted by Contract

AGREEMENT_NAME	NULL	VARCHAR2(30)	The default Pricing Agreement contract associated with this ship-from/ship-to relationship. The Demand Processor will use this to determine Customer PO Number and pricing unless a different Pricing Agreement is specified at the ship-from customer item level. FK to SO_AGREEMENTS. This
STD_PACK_QTY	NULL	NUMBER	If the requirements should be rounded up to standard packs in the Demand Processor, the quantity per pack expressed in the customer UOM.
FUTURE_AGREEMENT_NAME	NULL	VARCHAR2(30)	The future default Pricing Agreement contract associated with this ship-from/ship-to relationship to be used when the current Pricing Agreement expires. The Demand Processor will use this to determine Customer PO Number and pricing if demand is dated after the expiration date of the current Pricing Agreement unless a different future Pricing Agreement is specified at the ship-from customer item level. FK to SO_AGREEMENTS.
SHP_FORECAST_DAY_FROM	NULL	NUMBER	First day from the Shipping Schedule horizon start date from which demand will be considered Forecast
SCHEDULE_HIERARCHY_CODE	NULL	VARCHAR2(240)	Hierarchy of schedule types for demand consumption from PLN/SHP/SEQ schedule. Validated against FND_LOOKUPS.LOOKUP_TYPE = RLM_SCHEDULE_HIERARCHY. Mandatory at Customer level
COMMENTS	NULL	VARCHAR2(240)	Comments related to the Organization relationship to the Customer, Ship-To Address, or Customer Item. Optional at all levels.
LAST_UPDATED_BY	NOT NULL	NUMBER	Standard Who column
LAST_UPDATE_DATE	NOT NULL	DATE	Standard Who column
CREATION_DATE	NOT NULL	DATE	Standard Who column
CREATED_BY	NOT NULL	NUMBER	Standard Who column
ATTRIBUTE_CATEGORY	NULL	VARCHAR2(30)	Descriptive Flexfield context column
ATTRIBUTE1	NULL	VARCHAR2(150)	Descriptive Flexfield context column
ATTRIBUTE2	NULL	VARCHAR2(150)	Descriptive Flexfield context column
ATTRIBUTE3	NULL	VARCHAR2(150)	Descriptive Flexfield context column
ATTRIBUTE4	NULL	VARCHAR2(150)	Descriptive Flexfield context column
ATTRIBUTE5	NULL	VARCHAR2(150)	Descriptive Flexfield context column
ATTRIBUTE6	NULL	VARCHAR2(150)	Descriptive Flexfield context column
ATTRIBUTE7	NULL	VARCHAR2(150)	Descriptive Flexfield context column
ATTRIBUTE8	NULL	VARCHAR2(150)	Descriptive Flexfield context column

Oracle Proprietary, Confidential Information--Use Restricted by Contract

ATTRIBUTE9	NULL	VARCHAR2(150)	Descriptive Flexfield context column
ATTRIBUTE10	NULL	VARCHAR2(150)	Descriptive Flexfield context column
ATTRIBUTE11	NULL	VARCHAR2(150)	Descriptive Flexfield context column
ATTRIBUTE12	NULL	VARCHAR2(150)	Descriptive Flexfield context column
ATTRIBUTE13	NULL	VARCHAR2(150)	Descriptive Flexfield context column
ATTRIBUTE14	NULL	VARCHAR2(150)	Descriptive Flexfield context column
ATTRIBUTE15	NULL	VARCHAR2(150)	Descriptive Flexfield context column
LAST_UPDATE_LOGIN	NULL	NUMBER	Standard Who column
REQUEST_ID	NULL	NUMBER	Standard Who column
PROGRAM_APPLICATION_ID	NULL	NUMBER	Standard Who column
PROGRAM_ID	NULL	NUMBER	Standard Who column
PROGRAM_UPDATE_DATE	NULL	DATE	Standard Who column
TP_ATTRIBUTE1	NULL	VARCHAR2(150)	Trading Partner Flexfield Segment column
TP_ATTRIBUTE2	NULL	VARCHAR2(150)	Trading Partner Flexfield Segment column
TP_ATTRIBUTE3	NULL	VARCHAR2(150)	Trading Partner Flexfield Segment column
TP_ATTRIBUTE4	NULL	VARCHAR2(150)	Trading Partner Flexfield Segment column
TP_ATTRIBUTE5	NULL	VARCHAR2(150)	Trading Partner Flexfield Segment column
TP_ATTRIBUTE6	NULL	VARCHAR2(150)	Trading Partner Flexfield Segment column
TP_ATTRIBUTE7	NULL	VARCHAR2(150)	Trading Partner Flexfield Segment column
TP_ATTRIBUTE8	NULL	VARCHAR2(150)	Trading Partner Flexfield Segment column
TP_ATTRIBUTE9	NULL	VARCHAR2(150)	Trading Partner Flexfield Segment column
TP_ATTRIBUTE10	NULL	VARCHAR2(150)	Trading Partner Flexfield Segment column
TP_ATTRIBUTE11	NULL	VARCHAR2(150)	Trading Partner Flexfield Segment column
TP_ATTRIBUTE12	NULL	VARCHAR2(150)	Trading Partner Flexfield Segment column
TP_ATTRIBUTE13	NULL	VARCHAR2(150)	Trading Partner Flexfield Segment column
TP_ATTRIBUTE14	NULL	VARCHAR2(150)	Trading Partner Flexfield Segment column
TP_ATTRIBUTE15	NULL	VARCHAR2(150)	Trading Partner Flexfield Segment column
TP_ATTRIBUTE_CATEGORY	NULL	VARCHAR2(30)	Trading Partner Flexfield Segment column
MATCH_ACROSS_KEY	NULL	VARCHAR2(240)	ASCII string of characters which identify the enabled optional demand matching attributes when demand from different schedule types is being compared. The ASCII character assigned to the matching column is stored in FND_LOOKUPS.LOOKUP_CODE after the comma delimiter.

Oracle Proprietary, Confidential Information--Use Restricted by Contract

MATCH_WITHIN_KEY	NULL VARCHAR2(240)	ASCII string of characters which identify the enabled optional demand matching attributes when demand from the same schedule type is being compared. The ASCII character assigned to the matching column is stored in FND_LOOKUPS.LOOKUP_CODE after the comma delimiter.
PLN_MRP_FORECAST_DAY_FROM	NULL NUMBER	
PLN_MRP_FORECAST_DAY_TO	NULL NUMBER	
SHP_MRP_FORECAST_DAY_FROM	NULL NUMBER	
SHP_MRP_FORECAST_DAY_TO	NULL NUMBER	
SEQ_MRP_FORECAST_DAY_FROM	NULL NUMBER	
SEQ_MRP_FORECAST_DAY_TO	NULL NUMBER	

Indexes

<u>Index Name</u>	<u>Index Type</u>	<u>Sequence</u>	<u>Column Name</u>
RLM_CUST_SHIPTO_TERMS_U1	UNIQUE	3	CUSTOMER_ID
		6	ADDRESS_ID
		7	SHIP_FROM_ORG_ID
RLM_CUST_SHIPTO_TERMS_U2	NOT UNIQUE	5	CUST_SHIPTO_TERMS_ID

RLM_DEMAND_EXCEPTIONS

Column Descriptions

Name	Null?	Type	Description
EXCEPTION_ID	NOT NULL	NUMBER	Exception Unique Identifier
MESSAGE_NAME	NOT NULL	VARCHAR2(30)	The exception code. FK to FND_NEW_MESSAGES.
EXCEPTION_LEVEL	NOT NULL	VARCHAR2(1)	Indicates whether the exception is a warning ('W'), an error ('E'), or information ('I')
CUST_BILL_TO_EXT	NULL	VARCHAR2(35)	Bill-To Location
CUST_INTERMD_SHIPTO_EXT	NULL	VARCHAR2(35)	External Customer Bill-To Cross Reference
CUST_ITEM_DESCRIPTION	NULL	VARCHAR2(80)	Customer Item Description
CUST_JOB_NUMBER	NULL	VARCHAR2(50)	Customer Job Number
CUST_MODEL_SERIAL_NUM	NULL	VARCHAR2(35)	Customer's Vehicle Identification Number for this sequenced detail, e.g. VIN or Chassis ID.
CUST_NAME_EXT	NULL	VARCHAR2(60)	Customer Name, as sent by the customer in the N1 and/or N2 segment.
CUSTOMER_PROD_SEQ_NUM	NULL	VARCHAR2(35)	Customer Production Sequence Number, or Delivery Number
CUST_SHIP_FROM_ORG_EXT	NULL	VARCHAR2(80)	External Inventory Organization Cross Reference
CUST_SHIP_TO_EXT	NULL	VARCHAR2(35)	External Ship-To Address Cross Reference
CUST_UOM_EXT	NULL	VARCHAR2(10)	External Customer Unit of Measure Cross Reference
CUSTOMER_ITEM_EXT	NULL	VARCHAR2(50)	External Customer Part Number Cross Reference
DATE_TYPE_CODE	NULL	VARCHAR2(30)	Type of Start/End Date, e.g. Ship, Delivery, Pull Signal, Cumulative. Validated against FND_LOOKUPS.LOOKUP_TYPE = RLM_DATE_TYPE_CODE
ECE_TP_LOCATION_CODE_EXT	NULL	VARCHAR2(35)	For EDI transactions only, EDI Gateway Trading Partner Code assigned to the transaction in the EDI Gateway Common Control Record.
ECE_TP_TRANSLATOR_CODE	NULL	VARCHAR2(35)	For EDI transactions only, EDI Gateway Trading Partner Code assigned to the transaction in the EDI Gateway Common Control Record.
EDI_CONTROL_NUM_3	NULL	VARCHAR2(15)	EDI control number 3 (ST) assigned by the customer's EDI translator for audit.
EDI_TEST_INDICATOR	NULL	VARCHAR2(1)	EDI Test/Production transaction indicator (T or P), assigned by the customer's EDI translator. EDI Gateway rules determine the handling of test transactions within the Demand Processor.
EXCEPTION_ATTRIBUTE1	NULL	VARCHAR2(150)	Exception place holder flexfield (not standard AOL)
EXCEPTION_ATTRIBUTE10	NULL	VARCHAR2(150)	Exception place holder flexfield (not standard AOL)

Oracle Proprietary, Confidential Information--Use Restricted by Contract

EXCEPTION_ATTRIBUTE11	NULL	VARCHAR2(150)	Exception place holder flexfield (not standard AOL)
EXCEPTION_ATTRIBUTE12	NULL	VARCHAR2(150)	Exception place holder flexfield (not standard AOL)
EXCEPTION_ATTRIBUTE13	NULL	VARCHAR2(150)	Exception place holder flexfield (not standard AOL)
EXCEPTION_ATTRIBUTE14	NULL	VARCHAR2(150)	Exception place holder flexfield (not standard AOL)
EXCEPTION_ATTRIBUTE15	NULL	VARCHAR2(150)	Exception place holder flexfield (not standard AOL)
EXCEPTION_ATTRIBUTE16	NULL	VARCHAR2(150)	Exception place holder flexfield (not standard AOL)
EXCEPTION_ATTRIBUTE17	NULL	VARCHAR2(150)	Exception place holder flexfield (not standard AOL)
EXCEPTION_ATTRIBUTE18	NULL	VARCHAR2(150)	Exception place holder flexfield (not standard AOL)
EXCEPTION_ATTRIBUTE19	NULL	VARCHAR2(150)	Exception place holder flexfield (not standard AOL)
EXCEPTION_ATTRIBUTE2	NULL	VARCHAR2(150)	Exception place holder flexfield (not standard AOL)
EXCEPTION_ATTRIBUTE20	NULL	VARCHAR2(150)	Exception place holder flexfield (not standard AOL)
EXCEPTION_ATTRIBUTE3	NULL	VARCHAR2(150)	Exception place holder flexfield (not standard AOL)
EXCEPTION_ATTRIBUTE4	NULL	VARCHAR2(150)	Exception place holder flexfield (not standard AOL)
EXCEPTION_ATTRIBUTE5	NULL	VARCHAR2(150)	Exception place holder flexfield (not standard AOL)
EXCEPTION_ATTRIBUTE6	NULL	VARCHAR2(150)	Exception place holder flexfield (not standard AOL)
EXCEPTION_ATTRIBUTE7	NULL	VARCHAR2(150)	Exception place holder flexfield (not standard AOL)
EXCEPTION_ATTRIBUTE8	NULL	VARCHAR2(150)	Exception place holder flexfield (not standard AOL)
EXCEPTION_ATTRIBUTE9	NULL	VARCHAR2(150)	Exception place holder flexfield (not standard AOL)
ITEM_DETAIL_QUANTITY	NULL	NUMBER	Requested quantity. If Item_Detail_Type = 0, 1, 2, this is the demand quantity. If Item_Detail_Type = 3, this is the authorization quantity. If Item_Detail_Type = 4, this is the shipped, received or CUM quantity. If Item_Detail_Type = 5, this is a miscellaneous quantity, such as ahead/behind, inventory balance, etc.
ITEM_DETAIL_SUBTYPE	NULL	VARCHAR2(30)	Schedule item detail row sub-type: For form or forecast demand, Bucket type associated with the demand date/quantity; for authorizations, the type of authorizations, the type of authorization; for shipment/receipt, cumulative or last. Validated against FND_LOOKUPS
ITEM_DETAIL_TYPE	NULL	VARCHAR2(30)	Schedule item detail row type:0 = Past Due Firm,1 = Firm Demand,2 = Forecast Demand, 3 = Authorization,4 = Shipment/Receipt Info,5 = OtherValidated against FND_LOOKUPS.LOOKUP_TYPE = RLM_DETAIL_TYPE_CODE
MESSAGE_TEXT	NULL	VARCHAR2(3999)	Exception message

Oracle Proprietary, Confidential Information--Use Restricted by Contract

QTY_TYPE_CODE	NULL	VARCHAR2(30)	Actual or Cumulative. Validated against FND_LOOKUPS.LOOKUP_TYPE=RLM_QTY_TYPE_CODE
REPORT_SUMMARY	NULL	LONG	Contains additional information related to the error encountered in Process Order API and specified in MESSAGE_TEXT
INTERFACE_HEADER_ID	NULL	NUMBER	Interface header Unique Identifier
INTERFACE_LINE_ID	NULL	NUMBER	Interface Line Unique Identifier. This column will be null if an error or warning pertained to the schedule header.
SCHEDULE_HEADER_ID	NULL	NUMBER	Schedule header unique identifier
SCHEDULE_LINE_ID	NULL	NUMBER	Schedule item unique identifier
SCHEDULE_TYPE	NULL	VARCHAR2(30)	Schedule Type: Planning, Shipping or Sequenced. Validated against FND_LOOKUPS.LOOKUP_TYPE = RLM_SCHEDULE_TYPE.
SCHED_GENERATION_DATE	NULL	DATE	Date customer generated either the schedule or the planning information on the schedule.
SCHEDULE_ITEM_NUM	NULL	NUMBER	Schedule Item Numbe, the means to identify how item demand and information is grouped by the customer within the schedule.
SCHEDULE_PURPOSE	NULL	VARCHAR2(30)	Schedule purpose code, i.e. Original, Replace, Cancellation, etc. Validated against FND_LOOKUPS.LOOKUP_TYPE = RLM_SCHEDULE_PURPOSE.
SCHEDULE_REFERENCE_NUM	NULL	VARCHAR2(35)	Customer assigned schedule reference or release number
SCHEDULE_SOURCE	NULL	VARCHAR2(30)	EDI or manual transaction source for this schedule, i.e. 830, 862, 866, DELFOR, MANUAL, etc.
REQUEST_DATE	NULL	DATE	Request Date
START_DATE_TIME	NULL	DATE	Customer-specified date/time, as transmitted by the customer on the EDI transaction.
INDUSTRY_ATTRIBUTE1	NULL	VARCHAR2(150)	Industry Attribute1. Also Customer Record Year.
SCHEDULE_DATE	NULL	VARCHAR2(240)	Schedule Date
CUST_PO_NUMBER	NULL	VARCHAR2(50)	Customer Purchase Order Number
LAST_UPDATE_DATE	NOT NULL	DATE	Standard who column
CUSTOMER_DOCK_CODE	NULL	VARCHAR2(35)	Customer Dock Code
CUST_PRODUCTION_LINE	NULL	VARCHAR2(50)	Customer Production Line
LAST_UPDATED_BY	NOT NULL	NUMBER	Standard Who column
CREATION_DATE	NOT NULL	DATE	Standard Who column
CREATED_BY	NOT NULL	NUMBER	Standard Who column
LAST_UPDATE_LOGIN	NULL	NUMBER	Standard Who column
REQUEST_ID	NULL	NUMBER	Request Identifier
PROGRAM_APPLICATION_ID	NULL	NUMBER	Standard Who column
PROGRAM_ID	NULL	NUMBER	Standard Who column
PROGRAM_UPDATE_DATE	NULL	DATE	
INVENTORY_ITEM	NULL	VARCHAR2(50)	Inventory Item Number
SCHEDULE_LINE_NUMBER	NULL	NUMBER	Schedule Line Number
HORIZON_START_DATE	NULL	DATE	Horizon Start Date

Oracle Proprietary, Confidential Information--Use Restricted by Contract

HORIZON_END_DATE	NULL DATE	Horizon End Date
ORDER_HEADER_ID	NULL NUMBER	Order Header Identifier
ORDER_LINE_ID	NULL NUMBER	Order Line Identifier

Indexes

<u>Index Name</u>	<u>Index Type</u>	<u>Sequence</u>	<u>Column Name</u>
RLM_DEMAND_EXCEPTIONS_N1	NOT UNIQUE	2	REQUEST_ID
RLM_DEMAND_EXCEPTIONS_U1	UNIQUE	2	EXCEPTION_ID

RLM_INTERFACE_HEADERS_ALL

This table stores the header level details of the Release Management schedules. It has details pertaining to the specific schedule and customer level information. EDI Gateway will feed into this table for the demand transactions of Planning, Shipping and Sequenced Schedules.

Column Descriptions

Name	Null?	Type	Description
HEADER_ID	NOT NULL	NUMBER	Sequence Generated Unique Identifier
CUST_ADDRESS_1_EXT	NULL	VARCHAR2(35)	Customer address line 1, as sent by the customer on the N3 segment.
CUST_ADDRESS_2_EXT	NULL	VARCHAR2(35)	Customer address line 2, as sent by the customer on the N3 segment.
CUST_ADDRESS_3_EXT	NULL	VARCHAR2(35)	Customer address line 3, as sent by the customer on the N3 segment.
CUST_ADDRESS_4_EXT	NULL	VARCHAR2(35)	Customer address line 4, as sent by the customer on the N3 segment.
CUST_CITY_EXT	NULL	VARCHAR2(30)	Customer address city, as sent by the customer on the N4 segment.
CUST_COUNTRY_EXT	NULL	VARCHAR2(3)	Customer country, as sent by the customer on the N4 segment.
CUST_COUNTY_EXT	NULL	VARCHAR2(25)	Customer county, as sent by the customer on the N4 segment.
CUSTOMER_EXT	NULL	VARCHAR2(30)	Trading Partner designator Cross Reference
CUST_NAME_EXT	NULL	VARCHAR2(20)	Customer Name, as sent by the customer in the N1 and/or N2 segment.
CUST_POSTAL_CD_EXT	NULL	VARCHAR2(15)	Customer address postal code, as sent by the customer on the N4 segment.
CUST_PROVINCE_EXT	NULL	VARCHAR2(10)	Customer province, as sent by the customer on the N4 segment.
CUST_STATE_EXT	NULL	VARCHAR2(10)	Customer state, as sent by the customer on the N4 segment.
CUSTOMER_ID	NULL	NUMBER	Customer Identifier. FK to RA_CUSTOMERS.
ECE_PRIMARY_ADDRESS_ID	NULL	NUMBER	Customer Primary Address ID populated by EDI Gateway code conversion of external Trading Partner Location Code. FK to RA_ADDRESSES.
ECE_TP_LOCATION_CODE_EXT	NULL	VARCHAR2(35)	For EDI transactions only, external Trading Partner Location Code assigned to the location in the EDI Gateway Common Control Record .
ECE_TP_TRANSLATOR_CODE	NULL	VARCHAR2(35)	For EDI transactions only, EDI Gateway Trading Partner Code assigned to the transaction in the EDI Gateway Common Control Record .
EDI_CONTROL_NUM_1	NULL	VARCHAR2(15)	EDI control number 1 (ISA) assigned by the customer EDI translator for audit.

Oracle Proprietary, Confidential Information--Use Restricted by Contract

EDI_CONTROL_NUM_2	NULL	VARCHAR2(15)	EDI control number 2 (GS) assigned by the customer EDI translator for audit.
EDI_CONTROL_NUM_3	NULL	VARCHAR2(15)	EDI control number 3 (ST) assigned by the customer EDI translator for audit.
EDI_TEST_INDICATOR	NULL	VARCHAR2(1)	EDI Test/Production transaction indicator (T or P), assigned by the customer EDI translator. EDI Gateway rules determine the handling of test transactions within the Demand Processor.
HEADER_CONTACT_CODE_1	NULL	VARCHAR2(3)	Contact code 1 included in customer EDI transaction (not validated)
HEADER_CONTACT_CODE_2	NULL	VARCHAR2(3)	Contact code 2 included in customer EDI transaction (not validated)
HEADER_CONTACT_VALUE_1	NULL	VARCHAR2(80)	Values associated with Contact code 1: concatenation of name, communication code, and communication number
HEADER_CONTACT_VALUE_2	NULL	VARCHAR2(80)	Values associated with Contact code 2 : concatenation of name, communication code, and communication number
HEADER_NOTE_TEXT	NULL	VARCHAR2(240)	Free form note text included in the schedule at the header level
HEADER_REF_CODE_1	NULL	VARCHAR2(3)	Reference code 1 included in customer EDI transaction
HEADER_REF_CODE_2	NULL	VARCHAR2(3)	Reference code 2 included in customer EDI transaction
HEADER_REF_CODE_3	NULL	VARCHAR2(3)	Reference code 3 included in customer EDI transaction
HEADER_REF_VALUE_1	NULL	VARCHAR2(35)	Value associated with Reference code 1
HEADER_REF_VALUE_2	NULL	VARCHAR2(35)	Value associated with Reference code 2
HEADER_REF_VALUE_3	NULL	VARCHAR2(35)	Value associated with Reference code 3
ORG_ID	NULL	NUMBER	Operating unit unique ID. FK to HR_ORGANIZATION_UNITS.
PROCESS_STATUS	NULL	NUMBER	Indicates the current processing status of a record (1=do not process, 2=waiting to be processed, 3=in process, 4=error, 5=processed, 6='processed with error(s)' for headers with lines in-error.
SCHEDULE_HEADER_ID	NULL	NUMBER	Schedule header unique identifier. FK to RLM_SCHEDULE_HEADERS
SCHEDULE_TYPE	NULL	VARCHAR2(30)	Schedule Type: Planning, Shipping or Sequenced. Validated against FND_LOOKUPS.LOOKUP_TYPE = RLM_SCHEDULE_TYPE.
SCHEDULE_TYPE_EXT	NULL	VARCHAR2(30)	External value from which RLM_SCHEDULE_TYPE was derived in EDI Gateway Code Conversion.
SCHED_GENERATION_DATE	NULL	DATE	Date customer generated either the schedule or the planning information on the schedule.

SCHED_HORIZON_END_DATE	NULL	DATE	Schedule horizon end date (to be derived based on demand contained within the schedule if not specified)
SCHED_HORIZON_START_DATE	NULL	DATE	Schedule horizon start date (to be derived based on demand contained within the schedule if not specified)
SCHEDULE_PURPOSE	NULL	VARCHAR2(30)	Schedule purpose code, i.e. Original, Replace, Cancellation, etc. Validated against FND_LOOKUPS.LOOKUP_TYPE =RLM_SCHEDULE_PURPOSE
SCHEDULE_PURPOSE_EXT	NULL	VARCHAR2(30)	External value from which SCHEDULE_PURPOSE was derived in EDI Gateway Code Conversion.
SCHEDULE_REFERENCE_NUM	NULL	VARCHAR2(35)	Customer assigned schedule reference or release number
SCHEDULE_SOURCE	NULL	VARCHAR2(30)	EDI or manual transaction source for this schedule, i.e. 830, 862, 866, DELFOR, MANUAL, etc.
LAST_UPDATE_DATE	NOT NULL	DATE	Standard Who column
LAST_UPDATED_BY	NOT NULL	NUMBER	Standard Who column
CREATION_DATE	NOT NULL	DATE	Standard Who column
CREATED_BY	NOT NULL	NUMBER	Standard Who column
ATTRIBUTE_CATEGORY	NULL	VARCHAR2(30)	Descriptive Flexfield context column
ATTRIBUTE1	NULL	VARCHAR2(150)	Descriptive Flexfield context column
ATTRIBUTE2	NULL	VARCHAR2(150)	Descriptive Flexfield context column
ATTRIBUTE3	NULL	VARCHAR2(150)	Descriptive Flexfield context column
ATTRIBUTE4	NULL	VARCHAR2(150)	Descriptive Flexfield context column
ATTRIBUTE5	NULL	VARCHAR2(150)	Descriptive Flexfield context column
ATTRIBUTE6	NULL	VARCHAR2(150)	Descriptive Flexfield context column
ATTRIBUTE7	NULL	VARCHAR2(150)	Descriptive Flexfield context column
ATTRIBUTE8	NULL	VARCHAR2(150)	Descriptive Flexfield context column
ATTRIBUTE9	NULL	VARCHAR2(150)	Descriptive Flexfield context column
ATTRIBUTE10	NULL	VARCHAR2(150)	Descriptive Flexfield context column
ATTRIBUTE11	NULL	VARCHAR2(150)	Descriptive Flexfield context column
ATTRIBUTE12	NULL	VARCHAR2(150)	Descriptive Flexfield context column
ATTRIBUTE13	NULL	VARCHAR2(150)	Descriptive Flexfield context column
ATTRIBUTE14	NULL	VARCHAR2(150)	Descriptive Flexfield context column
ATTRIBUTE15	NULL	VARCHAR2(150)	Descriptive Flexfield context column
LAST_UPDATE_LOGIN	NULL	NUMBER	Standard Who column
REQUEST_ID	NULL	NUMBER	Standard Who column
PROGRAM_APPLICATION_ID	NULL	NUMBER	Standard Who column
PROGRAM_ID	NULL	NUMBER	Standard Who column
PROGRAM_UPDATE_DATE	NULL	DATE	Standard Who column

Oracle Proprietary, Confidential Information--Use Restricted by Contract

TP_ATTRIBUTE1	NULL	VARCHAR2(150)	Trading Partner flexfield column
TP_ATTRIBUTE2	NULL	VARCHAR2(150)	Trading Partner flexfield column
TP_ATTRIBUTE3	NULL	VARCHAR2(150)	Trading Partner flexfield column
TP_ATTRIBUTE4	NULL	VARCHAR2(150)	Trading Partner flexfield column
TP_ATTRIBUTE5	NULL	VARCHAR2(150)	Trading Partner flexfield column
TP_ATTRIBUTE6	NULL	VARCHAR2(150)	Trading Partner flexfield column
TP_ATTRIBUTE7	NULL	VARCHAR2(150)	Trading Partner flexfield column
TP_ATTRIBUTE8	NULL	VARCHAR2(150)	Trading Partner flexfield column
TP_ATTRIBUTE9	NULL	VARCHAR2(150)	Trading Partner flexfield column
TP_ATTRIBUTE10	NULL	VARCHAR2(150)	Trading Partner flexfield column
TP_ATTRIBUTE11	NULL	VARCHAR2(150)	Trading Partner flexfield column
TP_ATTRIBUTE12	NULL	VARCHAR2(150)	Trading Partner flexfield column
TP_ATTRIBUTE13	NULL	VARCHAR2(150)	Trading Partner flexfield column
TP_ATTRIBUTE14	NULL	VARCHAR2(150)	Trading Partner flexfield column
TP_ATTRIBUTE15	NULL	VARCHAR2(150)	Trading Partner flexfield column
TP_ATTRIBUTE_CATEGORY	NULL	VARCHAR2(30)	Trading Partner flexfield context column

Indexes

<u>Index Name</u>	<u>Index Type</u>	<u>Sequence</u>	<u>Column Name</u>
RLM_HEADERS_INTERFACE_U1	UNIQUE	5	HEADER_ID

RLM_INTERFACE_LINES_ALL

This table stores the item and item detail level information associated with customer planning, shipping, or production sequenced schedules. For production sequence schedules, the item represents the feature, not the configuration. This table stores all details for scheduled items: dated demand, authorizations, and customer shipment/receipt information. It has a child relationship to RLM_INTERFACE_HEADERS.

Column Descriptions

Name	Null?	Type	Description
LINE_ID	NOT NULL	NUMBER	Sequence Generated Unique Identifier
HEADER_ID	NOT NULL	NUMBER	Sequence Generated Unique Identifier foreign key to the RLM_INTERFACE_HEADERS_ALL.
AGREEMENT_ID	NULL	NUMBER	Unique identifier for agreement on which customer purchase order is associated. FK to RA_AGREEMENTS
ATO_DATA_TYPE	NULL	VARCHAR2(30)	Code to describe what type of data is included for the ATO item (1=Model and Options, 2=Model, 3=Options.) Validated against FND_LOOKUPS.LOOKUP_TYPE =RLM_ITEM_METHOD_TYPE
BILL_TO_ADDRESS_1_EXT	NULL	VARCHAR2(35)	Bill To address line 1, as sent by the customer on the N3 segment.
BILL_TO_ADDRESS_2_EXT	NULL	VARCHAR2(35)	Bill To address line 2, as sent by the customer on the N3 segment.
BILL_TO_ADDRESS_3_EXT	NULL	VARCHAR2(35)	Bill To address line 3, as sent by the customer on the N3 segment.
BILL_TO_ADDRESS_4_EXT	NULL	VARCHAR2(35)	Bill To address line 4, as sent by the customer on the N3 segment.
BILL_TO_ADDRESS_ID	NULL	NUMBER	Bill To address identifier. FK to RA_ADDRESSES.
INVOICE_TO_ORG_ID	NULL	NUMBER	Unique identifier for invoice-to organization which relates to BILL_TO_ADDRESS_ID. FK to HR_ORGANIZATIONS
BILL_TO_CITY_EXT	NULL	VARCHAR2(30)	Bill To address city, as sent by the customer on the N4 segment.
BILL_TO_COUNTRY_EXT	NULL	VARCHAR2(3)	Bill To country, as sent by the customer on the N4 segment.
BILL_TO_COUNTY_EXT	NULL	VARCHAR2(25)	Bill To county, as sent by the customer on the N4 segment.
BILL_TO_NAME_EXT	NULL	VARCHAR2(60)	Bill To Name, as sent by the customer in the N1 and/or N2 segment.
BILL_TO_POSTAL_CD_EXT	NULL	VARCHAR2(15)	Bill To address postal code, as sent by the customer on the N4 segment.
BILL_TO_PROVINCE_EXT	NULL	VARCHAR2(10)	Bill To province, as sent by the customer on the N4 segment.
BILL_TO_SITE_USE_ID	NULL	NUMBER	Bill To site use identifier. FK to RA_SITE_USES.

Oracle Proprietary, Confidential Information--Use Restricted by Contract

BILL_TO_STATE_EXT	NULL	VARCHAR2(10)	Bill To state, as sent by the customer on the N4 segment.
CARRIER_ID_CODE_EXT	NULL	VARCHAR2(35)	The carrier id, as sent by the customer on the TD5 segment.
CARRIER_QUALIFIER_EXT	NULL	VARCHAR2(3)	The carrier qualifier, as sent by the customer on the TD5 segment.
COMMODITY_EXT	NULL	VARCHAR2(35)	Customer specified commodity code
COUNTRY_OF_ORIGIN_EXT	NULL	VARCHAR2(35)	Customer-specified country of origin
CUST_ASSEMBLY_EXT	NULL	VARCHAR2(30)	The customer assembly identification, as sent on the LIN segment of the 866 txn.
CUST_ASSIGNED_ID_EXT	NULL	VARCHAR2(20)	Customer assigned identification for differentiation within a transaction set, from LIN01.
CUST_BILL_TO_EXT	NULL	VARCHAR2(35)	External Customer Bill To Cross Reference
CUST_CONTRACT_NUM_EXT	NULL	VARCHAR2(35)	The customer contract number, as sent on the LIN segment of the 830 txn.
CUSTOMER_DOCK_CODE	NULL	VARCHAR2(50)	Customer dock code.
CUST_INTRMD_SHIP_TO_EXT	NULL	VARCHAR2(35)	External Intermediate ship to Cross Reference
CUST_ITEM_PRICE_EXT	NULL	NUMBER	Price included on the customer EDI transaction.
CUST_ITEM_PRICE_UOM_EXT	NULL	VARCHAR2(3)	UOM corresponding to the price included on the customer EDI transaction.
CUSTOMER_ITEM_REVISION	NULL	VARCHAR2(3)	Customer part revision included on schedule
CUSTOMER_JOB	NULL	VARCHAR2(50)	Customer job number
CUST_MANUFACTURER_EXT	NULL	VARCHAR2(35)	The manufacturer, as sent by the customer on the LIN segment of the 866 txn.
CUST_MODEL_NUMBER_EXT	NULL	VARCHAR2(35)	Customer Model Number for this sequenced detail
CUST_MODEL_SERIAL_NUMBER	NULL	VARCHAR2(35)	Customer Vehicle Identification Number for this sequenced detail, e.g. VIN or Chassis ID.
CUST_ORDER_NUM_EXT	NULL	VARCHAR2(35)	The order number as sent by the customer on the LIN segment of the 866 and 830 txn.
CUST_PROCESS_NUM_EXT	NULL	VARCHAR2(35)	The process number, as sent by the customer on the LIN segment of the 866 and 862 transaction.
CUST_PRODUCTION_LINE	NULL	VARCHAR2(50)	Customer production line
CUST_PRODUCTION_SEQ_NUM	NULL	VARCHAR2(35)	Customer Production Sequence Number, or Delivery Number
CUST_SET_NUM_EXT	NULL	VARCHAR2(35)	The customer set number, as sent on the LIN segment of the 862 and 866 txns.
CUST_SHIP_FROM_ORG_EXT	NULL	VARCHAR2(80)	External Inventory Organization Cross Reference
CUST_SHIP_TO_EXT	NULL	VARCHAR2(35)	External Ship to address Cross Reference
CUST_UOM_EXT	NULL	VARCHAR2(10)	External Customer unit of measure cross reference
CUSTOMER_ITEM_EXT	NULL	VARCHAR2(50)	External Customer part number Cross Reference
CUSTOMER_ITEM_ID	NULL	NUMBER	Customer item identifier. FK to MTL_CUSTOMER_ITEMS.

REQUEST_DATE	NULL	DATE	The date and time the customer wants the material delivered or shipped, based on whether the requirements are delivery based or ship based
SCHEDULE_DATE	NULL	DATE	Planned shipment date and time (request_date - delivery lead time if delivery based)
DATE_TYPE_CODE	NULL	VARCHAR2(30)	Type of start/end date, e.g. ship, deliver, Pull signal, Cumulative. Validated against FND_LOOKUPS.LOOKUP_TYPE =RLM_DATE_TYPE_CODE
DATE_TYPE_CODE_EXT	NULL	VARCHAR2(30)	External value from which DATE_TYPE_CODE was derived in EDI Gateway Code Conversion.
DELIVERY_LEAD_TIME	NULL	NUMBER	For demand lines, the difference between arrival and shipment dates, based on default shipping method between the ship-from and ship-to locations. This is determined by the Calculate Ship Date routine and passed into Order Import.
END_DATE_TIME	NULL	DATE	Customer-specified optional end date/time, applicable for flexible bucketed requirements, and cumulative information such as authorizations and shipped/received
EQUIPMENT_CODE_EXT	NULL	VARCHAR2(3)	The equipment code, as sent by the customer on the TD3 segment.
EQUIPMENT_NUMBER_EXT	NULL	VARCHAR2(35)	The equipment number, as sent by the customer on the TD3 segment.
HANDLING_CODE_EXT	NULL	VARCHAR2(3)	Special handling code as sent by the customer in the TD4 segment.
HAZARD_CODE_EXT	NULL	VARCHAR2(10)	Hazardous Material Code corresponding to the Hazardous Material Code Qualifier as sent by the customer in the TD4 segment.
HAZARD_CODE_QUAL_EXT	NULL	VARCHAR2(3)	Hazardous Material Code Qualifier as sent by the customer in the TD4 segment.
HAZARD_DESCRIPTION_EXT	NULL	VARCHAR2(80)	Hazardous Material Description as sent by the customer in the TD4 segment.
IMPORT_LICENSE_DATE_EXT	NULL	DATE	Customer Import License Date
IMPORT_LICENSE_EXT	NULL	VARCHAR2(35)	Customer Import License for shipment destination country
INDUSTRY_ATTRIBUTE1	NULL	VARCHAR2(150)	Record keeping or model year.
INDUSTRY_ATTRIBUTE10	NULL	VARCHAR2(150)	Industry Descriptive Flexfield
INDUSTRY_ATTRIBUTE11	NULL	VARCHAR2(150)	Industry Descriptive Flexfield
INDUSTRY_ATTRIBUTE12	NULL	VARCHAR2(150)	Industry Descriptive Flexfield
INDUSTRY_ATTRIBUTE13	NULL	VARCHAR2(150)	Industry Descriptive Flexfield
INDUSTRY_ATTRIBUTE14	NULL	VARCHAR2(150)	Industry Descriptive Flexfield
INDUSTRY_ATTRIBUTE15	NULL	VARCHAR2(150)	Industry Descriptive Flexfield
INDUSTRY_ATTRIBUTE2	NULL	VARCHAR2(150)	Industry Descriptive Flexfield
INDUSTRY_ATTRIBUTE3	NULL	VARCHAR2(150)	Industry Descriptive Flexfield
INDUSTRY_ATTRIBUTE4	NULL	VARCHAR2(150)	Industry Descriptive Flexfield
INDUSTRY_ATTRIBUTE5	NULL	VARCHAR2(150)	Industry Descriptive Flexfield

Oracle Proprietary, Confidential Information--Use Restricted by Contract

INDUSTRY_ATTRIBUTE6	NULL	VARCHAR2(150)	Industry Descriptive Flexfield
INDUSTRY_ATTRIBUTE7	NULL	VARCHAR2(150)	Industry Descriptive Flexfield
INDUSTRY_ATTRIBUTE8	NULL	VARCHAR2(150)	Industry Descriptive Flexfield
INDUSTRY_ATTRIBUTE9	NULL	VARCHAR2(150)	Industry Descriptive Flexfield
INDUSTRY_CONTEXT	NULL	VARCHAR2(30)	Industry Descriptive context Flexfield
INTRMD_SHIP_TO_ID	NULL	NUMBER	Customer Intermediate Ship-to Destination unique identifier. FK to RA_ADDRESSES
SHIP_TO_ORG_ID	NULL	NUMBER	Unique identifier for ship-to organization which relates to SHIP_TO_ADDRESS_ID. FK to HR_ORGANIZATIONS
INTRMD_ST_ADDRESS_1_EXT	NULL	VARCHAR2(35)	Intermediate Ship To address line 1, as sent by the customer on the N3 segment.
INTRMD_ST_ADDRESS_2_EXT	NULL	VARCHAR2(35)	Intermediate Ship To address line 2, as sent by the customer on the N3 segment.
INTRMD_ST_ADDRESS_3_EXT	NULL	VARCHAR2(35)	Intermediate Ship To address line 3, as sent by the customer on the N3 segment.
INTRMD_ST_ADDRESS_4_EXT	NULL	VARCHAR2(35)	Intermediate Ship To address line 4, as sent by the customer on the N3 segment.
INTRMD_ST_CITY_EXT	NULL	VARCHAR2(30)	Intermediate Ship To address city, as sent by the customer on the N4 segment.
INTRMD_ST_COUNTRY_EXT	NULL	VARCHAR2(3)	Intermediate Ship To country, as sent by the customer on the N4 segment.
INTRMD_ST_COUNTY_EXT	NULL	VARCHAR2(25)	Intermediate Ship To county, as sent by the customer on the N4 segment.
INTRMD_ST_NAME_EXT	NULL	VARCHAR2(60)	Intermediate Ship To Name, as sent by the customer in the N1 and/or N2 segment.
INTRMD_ST_POSTAL_CD_EXT	NULL	VARCHAR2(15)	Intermediate Ship To address postal code, as sent by the customer on the N4 segment.
INTRMD_ST_PROVINCE_EXT	NULL	VARCHAR2(10)	Intermediate Ship To province, as sent by the customer on the N4 segment.
INTRMD_ST_STATE_EXT	NULL	VARCHAR2(10)	Intermediate Ship To state, as sent by the customer on the N4 segment.
INTRMD_ST_SITE_USE_ID	NULL	NUMBER	Intermediate Ship To site use identifier, FK to RA_SITE_USES
INVENTORY_ITEM_ID	NULL	NUMBER	Inventory item identifier. FK to MTL_SYSTEM_ITEMS.
INVENTORY_ITEM_SEGMENT1	NULL	VARCHAR2(40)	Accounting Flexfield
INVENTORY_ITEM_SEGMENT10	NULL	VARCHAR2(40)	Accounting Flexfield
INVENTORY_ITEM_SEGMENT11	NULL	VARCHAR2(40)	Accounting Flexfield
INVENTORY_ITEM_SEGMENT12	NULL	VARCHAR2(40)	Accounting Flexfield
INVENTORY_ITEM_SEGMENT13	NULL	VARCHAR2(40)	Accounting Flexfield
INVENTORY_ITEM_SEGMENT14	NULL	VARCHAR2(40)	Accounting Flexfield
INVENTORY_ITEM_SEGMENT15	NULL	VARCHAR2(40)	Accounting Flexfield
INVENTORY_ITEM_SEGMENT16	NULL	VARCHAR2(40)	Accounting Flexfield
INVENTORY_ITEM_SEGMENT17	NULL	VARCHAR2(40)	Accounting Flexfield
INVENTORY_ITEM_SEGMENT18	NULL	VARCHAR2(40)	Accounting Flexfield
INVENTORY_ITEM_SEGMENT19	NULL	VARCHAR2(40)	Accounting Flexfield
INVENTORY_ITEM_SEGMENT2	NULL	VARCHAR2(40)	Accounting Flexfield
INVENTORY_ITEM_SEGMENT20	NULL	VARCHAR2(40)	Accounting Flexfield

Oracle Proprietary, Confidential Information--Use Restricted by Contract

INVENTORY_ITEM_SEGMENT3	NULL	VARCHAR2(40)	Accounting Flexfield
INVENTORY_ITEM_SEGMENT4	NULL	VARCHAR2(40)	Accounting Flexfield
INVENTORY_ITEM_SEGMENT5	NULL	VARCHAR2(40)	Accounting Flexfield
INVENTORY_ITEM_SEGMENT6	NULL	VARCHAR2(40)	Accounting Flexfield
INVENTORY_ITEM_SEGMENT7	NULL	VARCHAR2(40)	Accounting Flexfield
INVENTORY_ITEM_SEGMENT8	NULL	VARCHAR2(40)	Accounting Flexfield
INVENTORY_ITEM_SEGMENT9	NULL	VARCHAR2(40)	Accounting Flexfield
ITEM_CONTACT_CODE_1	NULL	VARCHAR2(3)	Contact code 1 included in customer EDI transaction
ITEM_CONTACT_CODE_2	NULL	VARCHAR2(3)	Contact code 2 included in customer EDI transaction
ITEM_CONTACT_VALUE_1	NULL	VARCHAR2(80)	Values associated with Contact code 1: concatenation of name, communication code, and communication number
ITEM_CONTACT_VALUE_2	NULL	VARCHAR2(80)	Values associated with Contact code 2 : concatenation of name, communication code, and communication number
ITEM_DESCRIPTION_EXT	NULL	VARCHAR2(80)	Item description included on schedule
ITEM_DETAIL_QUANTITY	NULL	NUMBER	Requested quantity. If Item_Detail_Type = 0,1,2, this is the demand quantity. If Item_Detail_Type = 3, this is the authorization quantity. If Item_Detail_Type = 4, this is the shipped, received or cum quantity. If Item_Detail_Type = 5, this is a miscellaneous quantity, such as ahead/behind, inventory balance, etc.
ITEM_DETAIL_REF_CODE_1	NULL	VARCHAR2(3)	Reference code 1 included in customer EDI transaction
ITEM_DETAIL_REF_CODE_2	NULL	VARCHAR2(3)	Reference code 2 included in customer EDI transaction
ITEM_DETAIL_REF_CODE_3	NULL	VARCHAR2(3)	Reference code 3 included in customer EDI transaction
ITEM_DETAIL_REF_VALUE_1	NULL	VARCHAR2(35)	Value associated with Reference code 1
ITEM_DETAIL_REF_VALUE_2	NULL	VARCHAR2(35)	Value associated with Reference code 2
ITEM_DETAIL_REF_VALUE_3	NULL	VARCHAR2(35)	Value associated with Reference code 3
ITEM_DETAIL_SUBTYPE	NULL	VARCHAR2(30)	Schedule item detail row sub-type:For form or forecast demand, Bucket type associated with the demand date/quantity; for authorizations, the type of authorization; for shipment/receipt, cumulative or last.
ITEM_DETAIL_SUBTYPE_EXT	NULL	VARCHAR2(30)	External value from which ITEM_DETAIL_SUBTYPE was derived in EDI Gateway Code Conversion.
ITEM_DETAIL_TYPE	NULL	VARCHAR2(30)	Schedule item detail row type: 0 = Past Due Firm = Firm Demand, 2 = Forecast Demand, 3 = Authorization, 4 = Shipment/Receipt Info, 5 = OtherValidated against FND_LOOKUPS.LOOKUP_TYPE =RLM_DETAIL_TYPE_CODE
ITEM_DETAIL_TYPE_EXT	NULL	VARCHAR2(30)	External value from which ITEM_DETAIL_TYPE was derived in EDI Gateway Code Conversion.

Oracle Proprietary, Confidential Information--Use Restricted by Contract

ITEM_ENG_CNG_LVL_EXT	NULL	VARCHAR2(35)	Customer part engineering change level included on schedule
ITEM_MEASUREMENTS_EXT	NULL	VARCHAR2(240)	Item measurement information as sent by the customer on the MEA segments.
ITEM_NOTE_TEXT	NULL	VARCHAR2(240)	Free form item note text included in the schedule
ITEM_REF_CODE_1	NULL	VARCHAR2(3)	Reference code 1 included in customer EDI transaction
ITEM_REF_CODE_2	NULL	VARCHAR2(3)	Reference code 2 included in customer EDI transaction
ITEM_REF_CODE_3	NULL	VARCHAR2(3)	Reference code 3 included in customer EDI transaction
ITEM_REF_VALUE_1	NULL	VARCHAR2(35)	Value associated with Reference code 1
ITEM_REF_VALUE_2	NULL	VARCHAR2(35)	Value associated with Reference code 2
ITEM_REF_VALUE_3	NULL	VARCHAR2(35)	Value associated with Reference code 3
ITEM_RELEASE_STATUS_EXT	NULL	VARCHAR2(3)	Customer part release status included on schedule
LADING_QUANTITY_EXT	NULL	NUMBER	The lading quantity as sent by the customer on the TD1 segment.
LETTER_CREDIT_EXPDT_EXT	NULL	DATE	Customer letter of credit expiration date
LETTER_CREDIT_EXT	NULL	VARCHAR2(35)	Customer letter of credit with international bank guaranteeing payment for international shipments
LINE_REFERENCE	NULL	VARCHAR2(50)	Unique line identifier within an order for a transmission identifier.
LINK_TO_LINE_REF	NULL	VARCHAR2(50)	Link to Immediate Parent_line_reference within an order for a transmission identifier.
ORDER_HEADER_ID	NULL	NUMBER	Order header identifier. FK to OE_ORDER_HEADERS.
ORG_ID	NULL	NUMBER	Operating unit unique id. FK to HR_ORGANIZATION_UNITS.
OTHER_NAME_CODE_1	NULL	VARCHAR2(3)	Other name code 1 included in customer EDI transaction
OTHER_NAME_CODE_2	NULL	VARCHAR2(3)	Other name code 2 included in customer EDI transaction
OTHER_NAME_VALUE_1	NULL	VARCHAR2(80)	Values associated with Other name code 1: concatenation of name, code, and number
OTHER_NAME_VALUE_2	NULL	VARCHAR2(80)	Values associated with Other name code 2 : concatenation of name, code, and number
PACK_SIZE_EXT	NULL	NUMBER	Size of supplier units in pack, as sent by the customer on the PO4 segment.
PACK_UNITS_PER_PACK_EXT	NULL	NUMBER	Number of inner pack units per out pack unit, as sent by the customer on the PO4 segment.
PACK_UOM_CODE_EXT	NULL	VARCHAR2(3)	Unit of measure of supplier units in the pack, as sent by the customer in the PO4 segment.
PACKAGING_CODE_EXT	NULL	VARCHAR2(10)	The packaging code as sent by the customer on TD1 segment.

PARENT_LINK_LINE_REF	NULL	VARCHAR2(50)	Line reference of top model for a transmission identifier for an order
PRICE_LIST_ID	NULL	NUMBER	Unique identifier for price list associated with customer item or agreement on which customer purchase order is associated. FK to RA_PRICE_LISTS
PRIMARY_QUANTITY	NULL	NUMBER	Quantity in the primary UOM.
PRIMARY_UOM_CODE	NULL	VARCHAR2(3)	Primary unit of measure. FK to MTL_UNITS_OF_MEASURE
PRIME_CONTRCTR_PART_EXT	NULL	VARCHAR2(35)	The prime contractor part number, as sent by the customer on the LIN segment of the 862 segment.
PROCESS_STATUS	NULL	NUMBER	Indicates The current processing status of a record (1=do not process, 2=waiting to be processed, 3=in process, 4=error, 5=processed, 6='processed with error(s)' for headers with lines in-error..)
CUST_PO_RELEASE_NUM	NULL	VARCHAR2(35)	Customer Purchase Order Release number included on schedule
CUST_PO_DATE	NULL	DATE	Customer-specified effectivity date of Purchase Order number included on schedule
CUST_PO_LINE_NUM	NULL	VARCHAR2(35)	Customer Purchase Order line number included on schedule
CUST_PO_NUMBER	NULL	VARCHAR2(50)	Customer purchase order number
QTY_TYPE_CODE	NULL	VARCHAR2(30)	Actual or Cumulative. Validated against FND_LOOKUPS.LOOKUP_TYPE =RLM_QTY_TYPE_CODE
QTY_TYPE_CODE_EXT	NULL	VARCHAR2(30)	External value from which QTY_TYPE_CODE was derived in EDI Gateway Code Conversion.
RETURN_CONTAINER_EXT	NULL	VARCHAR2(35)	Returnable container specified by customer for item shipment
SCHEDULE_LINE_ID	NULL	NUMBER	Schedule line unique identifier. FK to RLM_SCHEDULE_LINES, except for aggregated schedule lines.
ROUTING_DESC_EXT	NULL	VARCHAR2(35)	The routing description, as sent by the customer on the TD5 segment.
ROUTING_SEQ_CODE_EXT	NULL	VARCHAR2(3)	Code describing the relationship of a carrier to a specific shipment movement, as sent by the customer on the TD5 segment.

SCHEDULE_ITEM_NUM	NULL	NUMBER	Schedule Item Number, the means to identify how item demand and information is grouped by the customer within the schedule. For sequenced schedules, it is equal to CUSTOMER_PROD_SEQ_NUM. For EDI planning and shipping schedules, it is incremented in the EDI Gateway when each 2000 record is encountered on an inbound SPSI or SSSI transaction. This number is assigned for manually entered schedules. All interface lines with the same Schedule Item number are validated together, and pass or fail validation as a group.
SHIP_DEL_PATTERN_EXT	NULL	VARCHAR2(3)	Customer ship delivery pattern code for this item; not integrated with delivery rules for date/qty calculation
SHIP_DEL_TIME_CODE_EXT	NULL	VARCHAR2(3)	Customer ship delivery time code for this item; not integrated with delivery rules for date/qty calculation
SHIP_DEL_RULE_NAME	NULL	VARCHAR2(30)	Shipment/delivery rule name for this schedule item. Initially populated only if a successful code conversion in the EDI Gateway has occurred. FK to RLM_SHIP_DELIVERY_CODES
SHIP_FROM_ADDRESS_1_EXT	NULL	VARCHAR2(35)	SHIP_FROM address line 1, as sent by the customer on the N3 segment.
SHIP_FROM_ADDRESS_2_EXT	NULL	VARCHAR2(35)	SHIP_FROM address line 2, as sent by the customer on the N3 segment.
SHIP_FROM_ADDRESS_3_EXT	NULL	VARCHAR2(35)	SHIP_FROM address line 3, as sent by the customer on the N3 segment.
SHIP_FROM_ADDRESS_4_EXT	NULL	VARCHAR2(35)	SHIP_FROM address line 4, as sent by the customer on the N3 segment.
SHIP_FROM_CITY_EXT	NULL	VARCHAR2(30)	SHIP_FROM address city, as sent by the customer on the N4 segment.
SHIP_FROM_COUNTRY_EXT	NULL	VARCHAR2(3)	SHIP_FROM country, as sent by the customer on the N4 segment.
SHIP_FROM_COUNTY_EXT	NULL	VARCHAR2(25)	SHIP_FROM county, as sent by the customer on the N4 segment.
SHIP_FROM_NAME_EXT	NULL	VARCHAR2(60)	SHIP_FROM Name, as sent by the customer in the N1 and/or N2 segment.
SHIP_FROM_ORG_ID	NULL	NUMBER	Ship from organization identifier. FK to MTL_PARAMETERS and HR_ORGANIZATIONS.
SHIP_FROM_POSTAL_CD_EXT	NULL	VARCHAR2(15)	SHIP_FROM address postal code, as sent by the customer on the N4 segment.
SHIP_FROM_PROVINCE_EXT	NULL	VARCHAR2(10)	SHIP_FROM province, as sent by the customer on the N4 segment.
SHIP_FROM_STATE_EXT	NULL	VARCHAR2(10)	SHIP_FROM state, as sent by the customer on the N4 segment.
SHIP_LABEL_INFO_LINE_1	NULL	VARCHAR2(80)	Pull signal bar-code label routing information - line 1

Oracle Proprietary, Confidential Information--Use Restricted by Contract

SHIP_LABEL_INFO_LINE_10	NULL	VARCHAR2(80)	Pull signal bar-code label routing information - line 10
SHIP_LABEL_INFO_LINE_2	NULL	VARCHAR2(80)	Pull signal bar-code label routing information - line 2
SHIP_LABEL_INFO_LINE_3	NULL	VARCHAR2(80)	Pull signal bar-code label routing information - line 3
SHIP_LABEL_INFO_LINE_4	NULL	VARCHAR2(80)	Pull signal bar-code label routing information - line 4
SHIP_LABEL_INFO_LINE_5	NULL	VARCHAR2(80)	Pull signal bar-code label routing information - line 5
SHIP_LABEL_INFO_LINE_6	NULL	VARCHAR2(80)	Pull signal bar-code label routing information - line 6
SHIP_LABEL_INFO_LINE_7	NULL	VARCHAR2(80)	Pull signal bar-code label routing information - line 7
SHIP_LABEL_INFO_LINE_8	NULL	VARCHAR2(80)	Pull signal bar-code label routing information - line 8
SHIP_LABEL_INFO_LINE_9	NULL	VARCHAR2(80)	Pull signal bar-code label routing information - line 9
SHIP_TO_ADDRESS_1_EXT	NULL	VARCHAR2(35)	Ship to address line 1, as sent by the customer on the N3 segment.
SHIP_TO_ADDRESS_2_EXT	NULL	VARCHAR2(35)	Ship to address line 2, as sent by the customer on the N3 segment.
SHIP_TO_ADDRESS_3_EXT	NULL	VARCHAR2(35)	Ship to address line 3, as sent by the customer on the N3 segment.
SHIP_TO_ADDRESS_4_EXT	NULL	VARCHAR2(35)	Ship to address line 4, as sent by the customer on the N3 segment.
SHIP_TO_ADDRESS_ID	NULL	NUMBER	Ship to address identifier. FK to RA_ADDRESSES.
DELIVER_TO_ORG_ID	NULL	NUMBER	Unique identifier for ship-to organization which relates to SHIP_TO_ADDRESS_ID if there is no intermediate ship-to address, or to INTERMEDIATE_SHIP_TO_ID if intermediate ship-to address is specified. FK to HR_ORGANIZATIONS
SHIP_TO_CITY_EXT	NULL	VARCHAR2(30)	Ship to address city, as sent by the customer on the N4 segment.
SHIP_TO_COUNTRY_EXT	NULL	VARCHAR2(3)	Ship to country, as sent by the customer on the N4 segment.
SHIP_TO_COUNTY_EXT	NULL	VARCHAR2(25)	Ship to county, as sent by the customer on the N4 segment.
SHIP_TO_NAME_EXT	NULL	VARCHAR2(60)	Ship to name, as sent by the customer on the N1 or N2 segment.
SHIP_TO_POSTAL_CD_EXT	NULL	VARCHAR2(15)	Ship to address postal code, as sent by the customer on the N4 segment.
SHIP_TO_PROVINCE_EXT	NULL	VARCHAR2(10)	Ship to province, as sent by the customer on the N4 segment.
SHIP_TO_SITE_USE_ID	NULL	NUMBER	Ship to site use identifier. FK to RA_SITE_USES.
SHIP_TO_STATE_EXT	NULL	VARCHAR2(10)	Ship to state, as sent by the customer on the N4 segment.
START_DATE_TIME	NULL	DATE	Customer-specified date/time, as transmitted by the customer on the EDI transaction.

Oracle Proprietary, Confidential Information--Use Restricted by Contract

SUBLINE_ASSIGNED_ID_EXT	NULL	VARCHAR2(20)	Subline customer assigned identification from the SLN01. Related to but not necessarily equivalent to the baseline number, assigned identification from LIN01. For example, 1.1 or 1A might be used as a subline number to relate to baseline number 1.
SUBLINE_CONFIG_CODE_EXT	NULL	VARCHAR2(3)	The Subline Configuration Code, as sent by the customer on the SLN segment, indicating the relationship of the subline item to the baseline item.
SUBLINE_CUST_ITEM_EXT	NULL	VARCHAR2(50)	Subline customer item number, as sent by the customer on the SLN segment.
SUBLINE_CUST_ITEM_ID	NULL	NUMBER	Customer Item unique identifier.
SUBLINE_MODEL_NUM_EXT	NULL	VARCHAR2(35)	Subline customer model number, as sent by the customer on the SLN segment.
SUBLINE_QUANTITY	NULL	NUMBER	The subline quantity, as sent by the customer on the SLN segment.
SUBLINE_UOM_CODE	NULL	VARCHAR2(3)	The subline unit of measure (internal) cross-referenced from the UOM sent by the customer on the SLN segment. FK to MTL_UNITS_OF_MEASURE.
SUPPLIER_ITEM_EXT	NULL	VARCHAR2(35)	Supplier item number specified by customer
TRANSIT_TIME_EXT	NULL	VARCHAR2(22)	The transit time, as sent by the customer on the TD5 segment.
TRANSIT_TIME_QUAL_EXT	NULL	VARCHAR2(3)	The transit time qualifier, as sent by the customer on the TD-5 segment.
TRANSPORT_LOC_QUAL_EXT	NULL	VARCHAR2(3)	The shipping location qualifier, as sent by the customer on the TD5 segment. This identifies the type of location which specified in the corresponding shipping location.
TRANSPORT_LOCATION_EXT	NULL	VARCHAR2(35)	The specific shipping location (such as pool point or airport) corresponding to the shipping location qualifier, as sent by the customer on the TD5 segment. This corresponds to the shipping location qualifier.
TRANSPORT_METHOD_EXT	NULL	VARCHAR2(3)	The transportation method, as sent by the customer on the TD5 segment.
UOM_CODE	NULL	VARCHAR2(3)	Abbreviated unit of measure code. FK to MTL_UNITS_OF_MEASURE.
WEIGHT_EXT	NULL	NUMBER	The weight, as sent by the customer on the TD1 segment.
WEIGHT_QUALIFIER_EXT	NULL	VARCHAR2(3)	The weight qualifier, as sent by the customer on the TD1 segment.
WEIGHT_UOM_EXT	NULL	VARCHAR2(3)	The unit of measure corresponding to shipment weight, as sent by the customer on the TD1 segment.

Oracle Proprietary, Confidential Information--Use Restricted by Contract

FBO_CONFIGURATION_KEY_1	NULL	VARCHAR2(35)	For FBO Production Sequence schedules, the 1st sort key for identifying configurations indicated by the customer
FBO_CONFIGURATION_KEY_2	NULL	VARCHAR2(35)	For FBO Production Sequence schedules, the 2nd sort key for identifying configurations indicated by the customer
FBO_CONFIGURATION_KEY_3	NULL	VARCHAR2(35)	For FBO Production Sequence schedules, the 3rd sort key for identifying configurations indicated by the customer
FBO_CONFIGURATION_KEY_4	NULL	VARCHAR2(35)	For FBO Production Sequence schedules, the 4th sort key for identifying configurations indicated by the customer
FBO_CONFIGURATION_KEY_5	NULL	VARCHAR2(35)	For FBO Production Sequence schedules, the 5th sort key for identifying configurations indicated by the customer
MATCH_KEY_ACROSS	NULL	VARCHAR2(150)	Audit trail of match across key used when this schedule was processed.
MATCH_KEY_WITHIN	NULL	VARCHAR2(150)	Audit trail of match within key used when this schedule was processed.
CRITICAL_KEY_ATTRIBUTES	NULL	VARCHAR2(150)	Audit trail of critical attributes key used when this schedule was processed. An exception (warning) is generated if one of these is missing on Firm demand.
LAST_UPDATE_DATE	NOT NULL	DATE	Standard Who column
LAST_UPDATED_BY	NOT NULL	NUMBER	Standard Who column
CREATION_DATE	NOT NULL	DATE	Standard Who column
CREATED_BY	NOT NULL	NUMBER	Standard Who column
ATTRIBUTE_CATEGORY	NULL	VARCHAR2(30)	Descriptive flexfield context column
ATTRIBUTE1	NULL	VARCHAR2(150)	Descriptive Flexfield segment column
ATTRIBUTE2	NULL	VARCHAR2(150)	Descriptive Flexfield segment column
ATTRIBUTE3	NULL	VARCHAR2(150)	Descriptive Flexfield segment column
ATTRIBUTE4	NULL	VARCHAR2(150)	Descriptive Flexfield segment column
ATTRIBUTE5	NULL	VARCHAR2(150)	Descriptive Flexfield segment column
ATTRIBUTE6	NULL	VARCHAR2(150)	Descriptive Flexfield segment column
ATTRIBUTE7	NULL	VARCHAR2(150)	Descriptive Flexfield segment column
ATTRIBUTE8	NULL	VARCHAR2(150)	Descriptive Flexfield segment column
ATTRIBUTE9	NULL	VARCHAR2(150)	Descriptive Flexfield segment column
ATTRIBUTE10	NULL	VARCHAR2(150)	Descriptive Flexfield segment column
ATTRIBUTE11	NULL	VARCHAR2(150)	Descriptive Flexfield segment column
ATTRIBUTE12	NULL	VARCHAR2(150)	Descriptive Flexfield segment column
ATTRIBUTE13	NULL	VARCHAR2(150)	Descriptive Flexfield segment column

Oracle Proprietary, Confidential Information--Use Restricted by Contract

ATTRIBUTE14	NULL	VARCHAR2(150)	Descriptive Flexfield segment column
ATTRIBUTE15	NULL	VARCHAR2(150)	Descriptive Flexfield segment column
LAST_UPDATE_LOGIN	NULL	NUMBER	Standard Who column
REQUEST_ID	NULL	NUMBER	Standard Who column
PROGRAM_APPLICATION_ID	NULL	NUMBER	Standard Who column
PROGRAM_ID	NULL	NUMBER	Standard Who column
PROGRAM_UPDATE_DATE	NULL	DATE	Standard Who column
TP_ATTRIBUTE1	NULL	VARCHAR2(150)	Trading Partner Flexfield segment column
TP_ATTRIBUTE2	NULL	VARCHAR2(150)	Trading Partner Flexfield segment column
TP_ATTRIBUTE3	NULL	VARCHAR2(150)	Trading Partner Flexfield segment column
TP_ATTRIBUTE4	NULL	VARCHAR2(150)	Trading Partner Flexfield segment column
TP_ATTRIBUTE5	NULL	VARCHAR2(150)	Trading Partner Flexfield segment column
TP_ATTRIBUTE6	NULL	VARCHAR2(150)	Trading Partner Flexfield segment column
TP_ATTRIBUTE7	NULL	VARCHAR2(150)	Trading Partner Flexfield segment column
TP_ATTRIBUTE8	NULL	VARCHAR2(150)	Trading Partner Flexfield segment column
TP_ATTRIBUTE9	NULL	VARCHAR2(150)	Trading Partner Flexfield segment column
TP_ATTRIBUTE10	NULL	VARCHAR2(150)	Trading Partner Flexfield segment column
TP_ATTRIBUTE11	NULL	VARCHAR2(150)	Trading Partner Flexfield segment column
TP_ATTRIBUTE12	NULL	VARCHAR2(150)	Trading Partner Flexfield segment column
TP_ATTRIBUTE13	NULL	VARCHAR2(150)	Trading Partner Flexfield segment column
TP_ATTRIBUTE14	NULL	VARCHAR2(150)	Trading Partner Flexfield segment column
TP_ATTRIBUTE15	NULL	VARCHAR2(150)	Trading Partner Flexfield segment column
TP_ATTRIBUTE_CATEGORY	NULL	VARCHAR2(30)	Trading Partner Flexfield segment column
LINE_NUMBER	NULL	NUMBER	Unique identifier of a line within a schedule
INTMED_SHIP_TO_ORG_ID	NULL	NUMBER	Unique identifier for intermediate ship-to organization which relates to INTERMEDIATE_SHIP_TO_ID if intermediate ship-to address is specified. FK to HR_ORGANIZATIONS
LINE_SOURCE	NULL	VARCHAR2(30)	Schedule Source at line level since lines can also be manually entered.
PREFERRED_GRADE	NULL	VARCHAR2(4)	Preferred Grade

Indexes

<u>Index Name</u>	<u>Index Type</u>	<u>Sequence</u>	<u>Column Name</u>
RLM_LINES_INTERFACE_U1	UNIQUE	5	LINE_ID

RLM_MESSAGE_CATEGORY

Column Descriptions

Name	Null?	Type	Description
MESSAGE_CATEGORY_ID	NOT NULL	NUMBER	Message Category Unique Identifier
MESSAGE_CATEGORY	NOT NULL	NUMBER	Message Category
MESSAGE_CATEGORY_DESC	NULL	VARCHAR2(240)	Message Category Description
MESSAGE_NAME	NOT NULL	VARCHAR2(30)	The exception code. FK to FND_NEW_MESSAGES.
CREATION_DATE	NOT NULL	DATE	Standard Who column
CREATED_BY	NOT NULL	NUMBER(15)	Standard Who column
LAST_UPDATE_DATE	NOT NULL	DATE	Standard Who column
LAST_UPDATED_BY	NOT NULL	NUMBER(15)	Standard Who column
LAST_UPDATE_LOGIN	NULL	NUMBER(15)	Standard Who column

RLM_SCHEDULE_HEADERS_ALL

This table stores the header level details of the Release Management schedules. It has details pertaining to the specific schedule and customer level information. Release Management demand Processor uses this table to maintain a current picture of demand schedule headers.

Column Descriptions

Name	Null?	Type	Description
HEADER_ID	NOT NULL	NUMBER	Schedule unique identifier
CUSTOMER_ID	NOT NULL	NUMBER	Ship-to Customer unique identifier. FK to RA_CUSTOMERS
SCHEDULE_TYPE	NOT NULL	VARCHAR2(30)	Schedule Type: Planning, Shipping or Sequenced Validated against FND_LOOKUPS.LOOKUP_TYPE = RLM_SCHEDULE_TYPE
SCHED_HORIZON_END_DATE	NOT NULL	DATE	Schedule horizon end date
SCHED_HORIZON_START_DATE	NOT NULL	DATE	Schedule horizon start date
SCHEDULE_SOURCE	NOT NULL	VARCHAR2(30)	EDI or manual transaction source identifier for this schedule, i.e. 830, 862, 866, DELFOR, MANUAL, etc.
SCHEDULE_PURPOSE	NOT NULL	VARCHAR2(30)	Schedule purpose code, i.e. Original, Replace, Cancellation, etc. Validated against FND_LOOKUPS.LOOKUP_TYPE = RLM_SCHEDULE_PURPOSE
SCHEDULE_REFERENCE_NUM	NOT NULL	VARCHAR2(35)	Customer assigned schedule reference or release number
CUST_ADDRESS_1_EXT	NULL	VARCHAR2(35)	Customer address line 1, as sent by the customer on the N3 segment.
CUST_ADDRESS_2_EXT	NULL	VARCHAR2(35)	Customer address line 2, as sent by the customer on the N3 segment.
CUST_ADDRESS_3_EXT	NULL	VARCHAR2(35)	Customer address line 3, as sent by the customer on the N3 segment.
CUST_ADDRESS_4_EXT	NULL	VARCHAR2(35)	Customer address line 4, as sent by the customer on the N3 segment.
CUST_CITY_EXT	NULL	VARCHAR2(30)	Customer address city, as sent by the customer on the N4 segment.
CUST_COUNTRY_EXT	NULL	VARCHAR2(3)	Customer country, as sent by the customer on the N4 segment.
CUST_COUNTY_EXT	NULL	VARCHAR2(25)	Customer county, as sent by the customer on the N4 segment.
CUSTOMER_EXT	NULL	VARCHAR2(35)	Customer external value
CUST_NAME_EXT	NULL	VARCHAR2(60)	Customer Name, as sent by the customer in the N1 and/or N2 segment.
CUST_POSTAL_CD_EXT	NULL	VARCHAR2(15)	Customer address postal code, as sent by the customer on the N4 segment.
CUST_PROVINCE_EXT	NULL	VARCHAR2(10)	Customer province, as sent by the customer on the N4 segment.
CUST_STATE_EXT	NULL	VARCHAR2(10)	Customer state, as sent by the customer on the N4 segment.

ECE_PRIMARY_ADDRESS_ID	NULL	NUMBER	Customer Primary Address ID populated by EDI Gateway code conversion. FK to RA_ADDRESSES.
ECE_TP_LOCATION_CODE_EXT	NULL	VARCHAR2(35)	For EDI transactions only, external Trading Partner Location Code assigned to the transaction
ECE_TP_TRANSLATOR_CODE	NULL	VARCHAR2(35)	For EDI transactions only, EDI Gateway Trading Partner Code assigned to the transaction
EDI_CONTROL_NUM_1	NULL	VARCHAR2(15)	EDI control number 1 (ISA) assigned by the customer EDI translator for audit.
EDI_CONTROL_NUM_2	NULL	VARCHAR2(15)	EDI control number 2 (GS) assigned by the customer EDI translator for audit.
EDI_CONTROL_NUM_3	NULL	VARCHAR2(15)	EDI control number 3 (ST) assigned by the customer EDI translator for audit.
EDI_TEST_INDICATOR	NULL	VARCHAR2(1)	EDI Test/Production transaction indicator (T or P), assigned by the customer EDI translator. EDI Gateway rules determine the handling of test transactions within the Demand Processor.
HEADER_CONTACT_CODE_1	NULL	VARCHAR2(3)	Contact code 1 included in customer EDI transaction (not validated)
HEADER_CONTACT_CODE_2	NULL	VARCHAR2(3)	Contact code 2 included in customer EDI transaction (not validated)
HEADER_CONTACT_VALUE_1	NULL	VARCHAR2(80)	Values associated with Contact code 1: concatenation of name, communication code, and communication number
HEADER_CONTACT_VALUE_2	NULL	VARCHAR2(80)	Values associated with Contact code 2 : concatenation of name, communication code, and communication number
HEADER_NOTE_TEXT	NULL	VARCHAR2(240)	Free form note text included in the schedule at the header level
HEADER_REF_CODE_1	NULL	VARCHAR2(3)	Reference code 1 included in customer EDI transaction.
HEADER_REF_CODE_2	NULL	VARCHAR2(3)	Reference code 2 included in customer EDI transaction
HEADER_REF_CODE_3	NULL	VARCHAR2(3)	Reference code 3 included in customer EDI transaction
HEADER_REF_VALUE_1	NULL	VARCHAR2(35)	Value associated with Reference code 1
HEADER_REF_VALUE_2	NULL	VARCHAR2(35)	Value associated with Reference code 2
HEADER_REF_VALUE_3	NULL	VARCHAR2(35)	Value associated with Reference code 3
ORG_ID	NULL	NUMBER	Operating unit unique ID. FK to HR_ORGANIZATION_UNITS.
SCHEDULE_TYPE_EXT	NULL	VARCHAR2(30)	External value from which RLM_SCHEDULE_TYPE was derived in EDI Gateway Code Conversion.
SCHED_GENERATION_DATE	NULL	DATE	Date customer generated either the schedule or the planning information on the schedule.
SCHEDULE_PURPOSE_EXT	NULL	VARCHAR2(30)	External value from which SCHEDULE_PURPOSE was derived in EDI Gateway Code Conversion.

Oracle Proprietary, Confidential Information--Use Restricted by Contract

LAST_UPDATE_DATE	NOT NULL	DATE	Standard Who column
LAST_UPDATED_BY	NOT NULL	NUMBER	Standard Who column
CREATION_DATE	NOT NULL	DATE	Standard Who column
CREATED_BY	NOT NULL	NUMBER	Standard Who column
ATTRIBUTE_CATEGORY		NULL VARCHAR2(30)	Descriptive Flexfield context column
ATTRIBUTE1		NULL VARCHAR2(150)	Descriptive Flexfield segment column
ATTRIBUTE2		NULL VARCHAR2(150)	Descriptive Flexfield segment column
ATTRIBUTE3		NULL VARCHAR2(150)	Descriptive Flexfield segment column
ATTRIBUTE4		NULL VARCHAR2(150)	Descriptive Flexfield segment column
ATTRIBUTE5		NULL VARCHAR2(150)	Descriptive Flexfield segment column
ATTRIBUTE6		NULL VARCHAR2(150)	Descriptive Flexfield segment column
ATTRIBUTE7		NULL VARCHAR2(150)	Descriptive Flexfield segment column
ATTRIBUTE8		NULL VARCHAR2(150)	Descriptive Flexfield segment column
ATTRIBUTE9		NULL VARCHAR2(150)	Descriptive Flexfield segment column
ATTRIBUTE10		NULL VARCHAR2(150)	Descriptive Flexfield segment column
ATTRIBUTE11		NULL VARCHAR2(150)	Descriptive Flexfield segment column
ATTRIBUTE12		NULL VARCHAR2(150)	Descriptive Flexfield segment column
ATTRIBUTE13		NULL VARCHAR2(150)	Descriptive Flexfield segment column
ATTRIBUTE14		NULL VARCHAR2(150)	Descriptive Flexfield segment column
ATTRIBUTE15		NULL VARCHAR2(150)	Descriptive Flexfield segment column
LAST_UPDATE_LOGIN		NULL NUMBER	Standard Who column
REQUEST_ID		NULL NUMBER	Standard Who column
PROGRAM_APPLICATION_ID		NULL NUMBER	Standard Who column
PROGRAM_ID		NULL NUMBER	Standard Who column
PROGRAM_UPDATE_DATE		NULL DATE	Standard Who column
TP_ATTRIBUTE1		NULL VARCHAR2(150)	Trading Partner flexfield column
TP_ATTRIBUTE2		NULL VARCHAR2(150)	Trading Partner flexfield column
TP_ATTRIBUTE3		NULL VARCHAR2(150)	Trading Partner flexfield column
TP_ATTRIBUTE4		NULL VARCHAR2(150)	Trading Partner flexfield column
TP_ATTRIBUTE5		NULL VARCHAR2(150)	Trading Partner flexfield column
TP_ATTRIBUTE6		NULL VARCHAR2(150)	Trading Partner flexfield column
TP_ATTRIBUTE7		NULL VARCHAR2(150)	Trading Partner flexfield column
TP_ATTRIBUTE8		NULL VARCHAR2(150)	Trading Partner flexfield column
TP_ATTRIBUTE9		NULL VARCHAR2(150)	Trading Partner flexfield column
TP_ATTRIBUTE10		NULL VARCHAR2(150)	Trading Partner flexfield column

TP_ATTRIBUTE11	NULL	VARCHAR2(150)	Trading Partner flexfield column
TP_ATTRIBUTE12	NULL	VARCHAR2(150)	Trading Partner flexfield column
TP_ATTRIBUTE13	NULL	VARCHAR2(150)	Trading Partner flexfield column
TP_ATTRIBUTE14	NULL	VARCHAR2(150)	Trading Partner flexfield column
TP_ATTRIBUTE15	NULL	VARCHAR2(150)	Trading Partner flexfield column
TP_ATTRIBUTE_CATEGORY	NULL	VARCHAR2(30)	Trading Partner flexfield context column
PROCESS_STATUS	NULL	NUMBER	Indicates the current processing status of a record (1=do not process, 2=waiting to be processed, 3=in process, 4=error, 5=processed, 6='processed with error(s)' for headers with lines in-error.)

Indexes

<u>Index Name</u>	<u>Index Type</u>	<u>Sequence</u>	<u>Column Name</u>
RLM_SCHEDULE_HEADERS_N1	NOT UNIQUE	5	SCHEDULE_REFERENCE_NUM
RLM_SCHEDULE_HEADERS_N2	NOT UNIQUE	1	CUSTOMER_ID
		2	SCHEDULE_TYPE
		3	SCHED_HORIZON_START_DATE
RLM_SCHEDULE_HEADERS_U1	UNIQUE	5	HEADER_ID

RLM_SCHEDULE_LINES_ALL

This table stores the item and item detail level information associated with customer planning, shipping, or production sequenced schedules. For production sequence schedules, the item represents the feature, not the configuration. This table stores all details for scheduled items: dated demand, authorizations, and customer shipment/receipt information. It has a child relationship to RLM_SCHEDULE_HEADERS.

Column Descriptions

Name	Null?	Type	Description
LINE_ID	NOT NULL	NUMBER	Sequence Generated Unique Identifier for Schedule Line
CUSTOMER_ITEM_EXT	NULL	VARCHAR2(35)	Customer item number
CUSTOMER_ITEM_ID	NOT NULL	NUMBER	Customer item unique identifier. FK to MTL_CUSTOMER_ITEMS
DATE_TYPE_CODE	NOT NULL	VARCHAR2(30)	Type of start/end date, e.g. ship, deliver, Pull signal, Cumulative. Validated against FND_LOOKUPS.LOOKUP_TYPE = RLM_DATE_TYPE_CODE
INVENTORY_ITEM_ID	NOT NULL	NUMBER	Inventory item unique identifier. FK to MTL_SYSTEM_ITEMS
ITEM_DETAIL_SUBTYPE	NOT NULL	VARCHAR2(30)	Schedule item detail row sub-type: For form or forecast demand, Bucket type associated with the demand date/quantity; for authorizations, the type of authorization; for shipment/receipt, cumulative or last. Validated against FND_LOOKUPS.LOOKUP_TYPE = RLM_DETAIL_TYPE_CODE
ITEM_DETAIL_TYPE	NOT NULL	VARCHAR2(30)	Schedule item detail row type: 0 = Past Due Firm, 1 = Firm Demand, 2 = Forecast Demand, 3 = Authorization, 4 = Shipment/Receipt Info, 5 = Other. Validated against FND_LOOKUPS.LOOKUP_TYPE = RLM_DETAIL_TYPE_CODE
QTY_TYPE_CODE	NOT NULL	VARCHAR2(30)	Actual or Cumulative. Validated against FND_LOOKUPS.LOOKUP_TYPE = RLM_QTY_TYPE_CODE
HEADER_ID	NOT NULL	NUMBER	Sequence Generated Unique Identifier foreign key to the RLM_SCHEDULE_HEADERS_ALL.
INTERFACE_LINE_ID	NULL	NUMBER	Interface Line unique identifier. FK to RLM_INTERFACE_LINES
START_DATE_TIME	NOT NULL	DATE	Customer-specified start date/time, ; applicable whenever a discrete date/quantity is indicated
UOM_CODE	NOT NULL	VARCHAR2(3)	Customer-specified unit of measure. FK to MTL_UNITS_OF_MEASURE

ATO_DATA_TYPE	NULL	VARCHAR2(25)	Code to describe what type of data is included for the ATO item (1=Model and Options, 2=Model, 3=Options.) Validated against FND_LOOKUPS.LOOKUP_TYPE=RLM_ITEM_METHOD_TYPE
BILL_TO_ADDRESS_1_EXT	NULL	VARCHAR2(35)	Bill To address line 1, as sent by the customer on the N3 segment.
BILL_TO_ADDRESS_2_EXT	NULL	VARCHAR2(35)	Bill To address line 2, as sent by the customer on the N3 segment.
BILL_TO_ADDRESS_3_EXT	NULL	VARCHAR2(35)	Bill To address line 3, as sent by the customer on the N3 segment.
BILL_TO_ADDRESS_4_EXT	NULL	VARCHAR2(35)	Bill To address line 4, as sent by the customer on the N3 segment.
BILL_TO_ADDRESS_ID	NULL	NUMBER	Bill To address identifier. FK to RA_ADDRESSES.
INVOICE_TO_ORG_ID	NULL	NUMBER	Unique identifier for invoice-to organization which relates to BILL_TO_ADDRESS_ID. FK to HR_ORGANIZATIONS
BILL_TO_CITY_EXT	NULL	VARCHAR2(30)	Bill To address city, as sent by the customer on the N4 segment.
BILL_TO_COUNTRY_EXT	NULL	VARCHAR2(3)	Bill To country, as sent by the customer on the N4 segment.
BILL_TO_COUNTY_EXT	NULL	VARCHAR2(25)	Bill To county, as sent by the customer on the N4 segment.
BILL_TO_NAME_EXT	NULL	VARCHAR2(60)	Bill To Name, as sent by the customer in the N1 and/or N2 segment.
BILL_TO_POSTAL_CD_EXT	NULL	VARCHAR2(15)	Bill To address postal code, as sent by the customer on the N4 segment.
BILL_TO_PROVINCE_EXT	NULL	VARCHAR2(10)	Bill To province, as sent by the customer on the N4 segment.
BILL_TO_SITE_USE_ID	NULL	NUMBER	Bill To site use identifier. FK to RA_SITE_USES.
BILL_TO_STATE_EXT	NULL	VARCHAR2(10)	Bill To state, as sent by the customer on the N4 segment.
CARRIER_ID_CODE_EXT	NULL	VARCHAR2(35)	The carrier id, as sent by the customer on the TD5 segment.
CARRIER_QUALIFIER_EXT	NULL	VARCHAR2(3)	The carrier qualifier, as sent by the customer on the TD5 segment.
COMMODITY_EXT	NULL	VARCHAR2(35)	Customer specified commodity code
COUNTRY_OF_ORIGIN_EXT	NULL	VARCHAR2(35)	Customer-specified country of origin
CUST_ASSEMBLY_EXT	NULL	VARCHAR2(30)	The customer assembly identification, as sent on the LIN segment of the 866 txn.
CUST_ASSIGNED_ID_EXT	NULL	VARCHAR2(20)	Customer assigned identification for differentiation within a transaction set, from LIN01.
CUST_BILL_TO_EXT	NULL	VARCHAR2(35)	External Customer Bill To Cross Reference
CUST_CONTRACT_NUM_EXT	NULL	VARCHAR2(35)	The customer contract number, as sent on the LIN segment of the 830 txn.
CUSTOMER_DOCK_CODE	NULL	VARCHAR2(35)	Customer dock code.

Oracle Proprietary, Confidential Information--Use Restricted by Contract

CUST_INTRMD_SHIP_TO_EXT	NULL	VARCHAR2(35)	External Intermediate ship to Cross Reference
CUST_ITEM_PRICE_EXT	NULL	NUMBER	Price included on the customer EDI transaction.
CUST_ITEM_PRICE_UOM_EXT	NULL	VARCHAR2(3)	UOM corresponding to the price included on the customer EDI transaction.
CUSTOMER_ITEM_REVISION	NULL	VARCHAR2(3)	Customer part revision included on schedule
CUSTOMER_JOB	NULL	VARCHAR2(35)	Customer job number
CUST_MANUFACTURER_EXT	NULL	VARCHAR2(35)	The manufacturer, as sent by the customer on the LIN segment of the 866 txn.
CUST_MODEL_NUMBER_EXT	NULL	VARCHAR2(35)	Customer Model Number for this sequenced detail
CUST_MODEL_SERIAL_NUMBER	NULL	VARCHAR2(35)	Customer Vehicle Identification Number for this sequenced detail, e.g. VIN or Chassis ID.
CUST_ORDER_NUM_EXT	NULL	VARCHAR2(35)	The order number as sent by the customer on the LIN segment of the 866 and 830 txn.
CUST_PROCESS_NUM_EXT	NULL	VARCHAR2(35)	The process number, as sent by the customer on the LIN segment of the 866 and 862 transaction.
CUST_PRODUCTION_LINE	NULL	VARCHAR2(35)	Customer production line
CUST_SET_NUM_EXT	NULL	VARCHAR2(35)	The customer set number, as sent on the LIN segment of the 862 and 866 txns.
CUST_SHIP_FROM_ORG_EXT	NULL	VARCHAR2(80)	External Inventory Organization Cross Reference
CUST_SHIP_TO_EXT	NULL	VARCHAR2(35)	External Ship to address Cross Reference
CUST_UOM_EXT	NULL	VARCHAR2(10)	External Customer unit of measure cross reference
END_DATE_TIME	NULL	DATE	Customer-specified optional end date/time, applicable for flexible bucketed requirements, and cumulative information such as authorizations and shipped/received
EQUIPMENT_CODE_EXT	NULL	VARCHAR2(3)	The equipment code, as sent by the customer on the TD3 segment.
EQUIPMENT_NUMBER_EXT	NULL	VARCHAR2(35)	The equipment number, as sent by the customer on the TD3 segment.
HANDLING_CODE_EXT	NULL	VARCHAR2(3)	Special handling code as sent by the customer in the TD4 segment.
HAZARD_CODE_EXT	NULL	VARCHAR2(10)	Hazardous Material Code corresponding to the Hazardous Material Code Qualifier as sent by the customer in the TD4 segment.
HAZARD_CODE_QUAL_EXT	NULL	VARCHAR2(3)	Hazardous Material Code Qualifier as sent by the customer in the TD4 segment.
HAZARD_DESCRIPTION_EXT	NULL	VARCHAR2(80)	Hazardous Material Description as sent by the customer in the TD4 segment.
IMPORT_LICENSE_DATE_EXT	NULL	DATE	Customer Import License Date (included on the shipping schedule and must be sent back on the ship notice)

IMPORT_LICENSE_EXT	NULL	VARCHAR2(35)	Customer Import License for shipment destination country (included on the shipping schedule and must be sent back on the ship notice)
INDUSTRY_ATTRIBUTE1	NULL	VARCHAR2(150)	Record keeping or model year.
INDUSTRY_ATTRIBUTE10	NULL	VARCHAR2(150)	Industry Attribute Descriptive flexfield
INDUSTRY_ATTRIBUTE11	NULL	VARCHAR2(150)	Industry Attribute Descriptive flexfield
INDUSTRY_ATTRIBUTE12	NULL	VARCHAR2(150)	Industry Attribute Descriptive flexfield
INDUSTRY_ATTRIBUTE13	NULL	VARCHAR2(150)	Industry Attribute Descriptive flexfield
INDUSTRY_ATTRIBUTE14	NULL	VARCHAR2(150)	Industry Attribute Descriptive flexfield
INDUSTRY_ATTRIBUTE15	NULL	VARCHAR2(150)	Industry Attribute Descriptive flexfield
INDUSTRY_ATTRIBUTE2	NULL	VARCHAR2(150)	Unused
INDUSTRY_ATTRIBUTE3	NULL	VARCHAR2(150)	Customer Schedule Number. Schedule_reference_num on the RLM_SCHEDULE_HEADERS.
INDUSTRY_ATTRIBUTE4	NULL	VARCHAR2(150)	Industry Attribute Descriptive flexfield
INDUSTRY_ATTRIBUTE5	NULL	VARCHAR2(150)	Industry Attribute Descriptive flexfield
INDUSTRY_ATTRIBUTE6	NULL	VARCHAR2(150)	Industry Attribute Descriptive flexfield
INDUSTRY_ATTRIBUTE7	NULL	VARCHAR2(150)	Calculated CUM. This is updated after an order line has been shipped. It will be used on the ASN and on the packing list to indicate the CUM.
INDUSTRY_ATTRIBUTE8	NULL	VARCHAR2(150)	UOM for Calculated CUM in INDUSTRY_ATTRIBUTE7. This is updated after an order line has been shipped. It will be used on the ASN and on the packing list.
INDUSTRY_ATTRIBUTE9	NULL	VARCHAR2(150)	Industry Attribute Descriptive flexfield
INDUSTRY_CONTEXT	NULL	VARCHAR2(30)	Industry Attribute Descriptive flexfield context column
INTRMD_SHIP_TO_ID	NULL	NUMBER	Customer Intermediate Ship-to Destination unique identifier. FK to RA_ADDRESSES
SHIP_TO_ORG_ID	NULL	NUMBER	Unique identifier for ship-to organization which relates to SHIP_TO_ADDRESS_ID. FK to HR_ORGANIZATIONS
INTRMD_ST_ADDRESS_1_EXT	NULL	VARCHAR2(35)	INTERMEDIATE SHIP TO address line 1, as sent by the customer on the N3 segment.
INTRMD_ST_ADDRESS_2_EXT	NULL	VARCHAR2(35)	INTERMEDIATE SHIP TO address line 2, as sent by the customer on the N3 segment.
INTRMD_ST_ADDRESS_3_EXT	NULL	VARCHAR2(35)	INTERMEDIATE SHIP TO address line 3, as sent by the customer on the N3 segment.
INTRMD_ST_ADDRESS_4_EXT	NULL	VARCHAR2(35)	INTERMEDIATE SHIP TO address line 4, as sent by the customer on the N3 segment.
INTRMD_ST_CITY_EXT	NULL	VARCHAR2(30)	INTERMEDIATE SHIP TO address city, as sent by the customer on the N4 segment.

Oracle Proprietary, Confidential Information--Use Restricted by Contract

INTRMD_ST_COUNTRY_EXT	NULL	VARCHAR2(3)	INTERMEDIATE SHIP TO country, as sent by the customer on the N4 segment.
INTRMD_ST_COUNTY_EXT	NULL	VARCHAR2(25)	INTERMEDIATE SHIP TO county, as sent by the customer on the N4 segment.
INTRMD_ST_NAME_EXT	NULL	VARCHAR2(60)	INTERMEDIATE SHIP TO Name, as sent by the customer in the N1 and/or N2 segment.
INTRMD_ST_POSTAL_CD_EXT	NULL	VARCHAR2(15)	INTERMEDIATE SHIP TO address postal code, as sent by the customer on the N4 segment.
INTRMD_ST_PROVINCE_EXT	NULL	VARCHAR2(10)	INTERMEDIATE SHIP TO province, as sent by the customer on the N4 segment.
INTRMD_ST_STATE_EXT	NULL	VARCHAR2(10)	INTERMEDIATE SHIP TO state, as sent by the customer on the N4 segment.
INTRMD_ST_SITE_USE_ID	NULL	NUMBER	Intermediate ship to site use identifier, FK to RA_SITE_USES
ITEM_CONTACT_CODE_1	NULL	VARCHAR2(3)	Contact code 1 included in customer EDI transaction
ITEM_CONTACT_CODE_2	NULL	VARCHAR2(3)	Contact code 2 included in customer EDI transaction
ITEM_CONTACT_VALUE_1	NULL	VARCHAR2(80)	Values associated with Contact code 1: concatenation of name, communication code, and communication number
ITEM_CONTACT_VALUE_2	NULL	VARCHAR2(80)	Values associated with Contact code 2 : concatenation of name, communication code, and communication number
ITEM_DESCRIPTION_EXT	NULL	VARCHAR2(80)	Item description included on schedule
ITEM_DETAIL_QUANTITY	NULL	NUMBER	Requested quantity. If Item_Detail_Type = 0,1,2, this is the demand quantity. If Item_Detail_Type = 3, this is the authorization quantity. If Item_Detail_Type = 4, this is the shipped, received or cum quantity. If Item_Detail_Type = 5, this is a miscellaneous quantity, such as ahead/behind, inventory balance, etc.
ITEM_DETAIL_REF_CODE_1	NULL	VARCHAR2(3)	Reference code 1 included in customer EDI transaction
ITEM_DETAIL_REF_CODE_2	NULL	VARCHAR2(3)	Reference code 2 included in customer EDI transaction
ITEM_DETAIL_REF_CODE_3	NULL	VARCHAR2(3)	Reference code 3 included in customer EDI transaction
ITEM_DETAIL_REF_VALUE_1	NULL	VARCHAR2(35)	Value associated with Reference code 1
ITEM_DETAIL_REF_VALUE_2	NULL	VARCHAR2(35)	Value associated with Reference code 2
ITEM_DETAIL_REF_VALUE_3	NULL	VARCHAR2(35)	Value associated with Reference code 3
ITEM_ENG_CNG_LVL_EXT	NULL	VARCHAR2(35)	Customer part engineering change level included on schedule
ITEM_MEASUREMENTS_EXT	NULL	VARCHAR2(240)	Item measurement information as sent by the customer on the MEA segments.
ITEM_NOTE_TEXT	NULL	VARCHAR2(240)	Free form item note text included in the schedule

ITEM_REF_CODE_1	NULL	VARCHAR2(3)	Reference code 1 included in customer EDI transaction
ITEM_REF_CODE_2	NULL	VARCHAR2(3)	Reference code 2 included in customer EDI transaction
ITEM_REF_CODE_3	NULL	VARCHAR2(3)	Reference code 3 included in customer EDI transaction
ITEM_REF_VALUE_1	NULL	VARCHAR2(35)	Value associated with Reference code 1
ITEM_REF_VALUE_2	NULL	VARCHAR2(35)	Value associated with Reference code 2
ITEM_REF_VALUE_3	NULL	VARCHAR2(35)	Value associated with Reference code 3
ITEM_RELEASE_STATUS_EXT	NULL	VARCHAR2(3)	Customer part release status included on schedule
LADING_QUANTITY_EXT	NULL	NUMBER	The lading quantity as sent by the customer on the TD1 segment.
LETTER_CREDIT_EXPDT_EXT	NULL	DATE	Customer letter of credit expiration date (included on the shipping schedule and must be sent back on the ship notice)
LETTER_CREDIT_EXT	NULL	VARCHAR2(35)	Customer letter of credit with international bank guaranteeing payment for international shipments(included on the shipping schedule and must be sent back on the ship notice)
LINE_REFERENCE	NULL	VARCHAR2(50)	Unique line identifier within an order for a transmission identifier.
LINK_TO_LINE_REF	NULL	VARCHAR2(50)	Link to Immediate Parent_line_reference within an order for a transmission identifier.
ORG_ID	NULL	NUMBER	Operating unit unique ID. Validated against HR_ORGANIZATION_UNITS
OTHER_NAME_CODE_1	NULL	VARCHAR2(3)	Other name code 1 included in customer EDI transaction
OTHER_NAME_CODE_2	NULL	VARCHAR2(3)	Other name code 2 included in customer EDI transaction
OTHER_NAME_VALUE_1	NULL	VARCHAR2(80)	Values associated with Other name code 1: concatenation of name, code, and number
OTHER_NAME_VALUE_2	NULL	VARCHAR2(80)	Values associated with Other name code 2 : concatenation of name, code, and number
PACK_SIZE_EXT	NULL	NUMBER	Size of supplier units in pack, as sent by the customer on the PO4 segment.
PACK_UNITS_PER_PACK_EXT	NULL	NUMBER	Number of inner pack units per out pack unit, as sent by the customer on the PO4 segment.
PACK_UOM_CODE_EXT	NULL	VARCHAR2(3)	Unit of measure of supplier units in the pack, as sent by the customer in the PO4 segment.
PACKAGING_CODE_EXT	NULL	VARCHAR2(10)	The packaging code as sent by the customer on TD1 segment.
PRIMARY_QUANTITY	NULL	NUMBER	Quantity in the primary UOM. FK to MTL_UNITS_OF_MEASURE
PRIMARY_UOM_CODE	NULL	VARCHAR2(3)	Primary unit of measure. FK to MTL_UNITS_OF_MEASURE

Oracle Proprietary, Confidential Information--Use Restricted by Contract

PRIME_CONTRCTR_PART_EXT	NULL	VARCHAR2(35)	The prime contractor part number, as sent by the customer on the LIN segment of the 862 segment.
PROCESS_STATUS	NULL	NUMBER	Indicates the current processing status of a record (1=do not process, 2=waiting to be processed, 3=in process, 4=error, 5=processed, 6='processed with error(s)' for headers with lines in-error..)
PULLSIGNAL_END_SERIAL	NULL	VARCHAR2(35)	Pull Signal Ending Serial Number.
PULLSIGNAL_REF_NUM	NULL	VARCHAR2(35)	Pull Signal Reference Number.
PULLSIGNAL_START_SERIAL	NULL	VARCHAR2(35)	Pull Signal Starting Serial Number.
CUST_PO_RELEASE_NUM	NULL	VARCHAR2(35)	Customer Purchase Order Release number included on schedule
CUST_PO_DATE	NULL	DATE	Customer-specified effectivity date of Purchase Order number included on schedule
CUST_PO_LINE_NUM	NULL	VARCHAR2(35)	Customer Purchase Order line number included on schedule
CUST_PO_NUMBER	NULL	VARCHAR2(50)	Customer Purchase Order number included on schedule, should link to a valid agreement.
RETURN_CONTAINER_EXT	NULL	VARCHAR2(35)	Returnable container specified by customer for item shipment
ROUTING_DESC_EXT	NULL	VARCHAR2(35)	The routing description, as sent by the customer on the TD5 segment.
ROUTING_SEQ_CODE_EXT	NULL	VARCHAR2(3)	Code describing the relationship of a carrier to a specific shipment movement, as sent by the customer on the TD5 segment.
SCHEDULE_ITEM_NUM	NULL	NUMBER	Schedule Item Number, the means to identify how item demand and information is grouped by the customer within the schedule. For sequenced schedules, it is equal to CUSTOMER_PROD_SEQ_NUM. For EDI planning and shipping schedules, it is incremented in the EDI Gateway when each 2000 record is encountered on an inbound SPSI or SSSI transaction. This number is assigned for manually entered schedules. All interface lines with the same Schedule Item number are validated together, and pass or fail validation as a group.
SHIP_DEL_PATTERN_EXT	NULL	VARCHAR2(3)	Customer ship delivery pattern code for this item; not integrated with delivery rules for date/qty calculation
SHIP_DEL_TIME_CODE_EXT	NULL	VARCHAR2(3)	Customer ship delivery time code for this item; not integrated with delivery rules for date/qty calculation
SHIP_FROM_ADDRESS_1_EXT	NULL	VARCHAR2(35)	SHIP_FROM address line 1, as sent by the customer on the N3 segment.

SHIP_FROM_ADDRESS_2_EXT	NULL	VARCHAR2(35)	SHIP_FROM address line 2, as sent by the customer on the N3 segment.
SHIP_FROM_ADDRESS_3_EXT	NULL	VARCHAR2(35)	SHIP_FROM address line 3, as sent by the customer on the N3 segment.
SHIP_FROM_ADDRESS_4_EXT	NULL	VARCHAR2(35)	SHIP_FROM address line 4, as sent by the customer on the N3 segment.
SHIP_FROM_CITY_EXT	NULL	VARCHAR2(30)	SHIP_FROM address city, as sent by the customer on the N4 segment.
SHIP_FROM_COUNTRY_EXT	NULL	VARCHAR2(3)	SHIP_FROM country, as sent by the customer on the N4 segment.
SHIP_FROM_COUNTY_EXT	NULL	VARCHAR2(25)	SHIP_FROM county, as sent by the customer on the N4 segment.
SHIP_FROM_NAME_EXT	NULL	VARCHAR2(60)	SHIP_FROM Name, as sent by the customer in the N1 and/or N2 segment.
SHIP_FROM_ORG_ID	NULL	NUMBER	Ship-from organization ID derived from the ship-from code on the schedule or the customer site default warehouse. FK to MTL_PARAMETERS and HR_ORGANIZATIONS
SHIP_FROM_POSTAL_CD_EXT	NULL	VARCHAR2(15)	SHIP_FROM address postal code, as sent by the customer on the N4 segment.
SHIP_FROM_PROVINCE_EXT	NULL	VARCHAR2(10)	SHIP_FROM province, as sent by the customer on the N4 segment.
SHIP_FROM_STATE_EXT	NULL	VARCHAR2(10)	SHIP_FROM state, as sent by the customer on the N4 segment.
SHIP_LABEL_INFO_LINE_1	NULL	VARCHAR2(80)	Pull signal bar-code label routing information - line 1
SHIP_LABEL_INFO_LINE_10	NULL	VARCHAR2(80)	Pull signal bar-code label routing information - line 10
SHIP_LABEL_INFO_LINE_2	NULL	VARCHAR2(80)	Pull signal bar-code label routing information - line 2
SHIP_LABEL_INFO_LINE_3	NULL	VARCHAR2(80)	Pull signal bar-code label routing information - line 3
SHIP_LABEL_INFO_LINE_4	NULL	VARCHAR2(80)	Pull signal bar-code label routing information - line 4
SHIP_LABEL_INFO_LINE_5	NULL	VARCHAR2(80)	Pull signal bar-code label routing information - line 5
SHIP_LABEL_INFO_LINE_6	NULL	VARCHAR2(80)	Pull signal bar-code label routing information - line 6
SHIP_LABEL_INFO_LINE_7	NULL	VARCHAR2(80)	Pull signal bar-code label routing information - line 7
SHIP_LABEL_INFO_LINE_8	NULL	VARCHAR2(80)	Pull signal bar-code label routing information - line 8
SHIP_LABEL_INFO_LINE_9	NULL	VARCHAR2(80)	Pull signal bar-code label routing information - line 9
SHIP_TO_ADDRESS_1_EXT	NULL	VARCHAR2(35)	Ship to address line 1, as sent by the customer on the N3 segment.
SHIP_TO_ADDRESS_2_EXT	NULL	VARCHAR2(35)	Ship to address line 2, as sent by the customer on the N3 segment.
SHIP_TO_ADDRESS_3_EXT	NULL	VARCHAR2(35)	Ship to address line 3, as sent by the customer on the N3 segment.
SHIP_TO_ADDRESS_4_EXT	NULL	VARCHAR2(35)	Ship to address line 4, as sent by the customer on the N3 segment.

Oracle Proprietary, Confidential Information--Use Restricted by Contract

SHIP_TO_ADDRESS_ID	NULL	NUMBER	Ship-to Customer Final Destination unique identifier. FK to RA_ADDRESSES
DELIVER_TO_ORG_ID	NULL	NUMBER	Unique identifier for deliver-to organization which relates to SHIP_TO_ADDRESS_ID. FK to HR_ORGANIZATIONS
SHIP_TO_CITY_EXT	NULL	VARCHAR2(30)	Ship to address city, as sent by the customer on the N4 segment.
SHIP_TO_COUNTRY_EXT	NULL	VARCHAR2(3)	Ship to country, as sent by the customer on the N4 segment.
SHIP_TO_COUNTY_EXT	NULL	VARCHAR2(25)	Ship to county, as sent by the customer on the N4 segment.
SHIP_TO_NAME_EXT	NULL	VARCHAR2(60)	Ship to name, as sent by the customer on the N1 or N2 segment.
SHIP_TO_POSTAL_CD_EXT	NULL	VARCHAR2(15)	Ship to address postal code, as sent by the customer on the N4 segment.
SHIP_TO_PROVINCE_EXT	NULL	VARCHAR2(10)	Ship to province, as sent by the customer on the N4 segment.
SHIP_TO_SITE_USE_ID	NULL	NUMBER	Ship-to Customer Site Use unique identifier. FK to RA_SITE_USES
SHIP_TO_STATE_EXT	NULL	VARCHAR2(10)	Ship to state, as sent by the customer on the N4 segment.
SUBLINE_ASSIGNED_ID_EXT	NULL	VARCHAR2(20)	Subline customer assigned identification from the SLN01. Related to but not necessarily equivalent to the baseline number, assigned identification from LIN01. For example, 1.1 or 1A might be used as a subline number to relate to baseline number 1.
SUBLINE_CONFIG_CODE_EXT	NULL	VARCHAR2(3)	The Subline Configuration Code, as sent by the customer on the SLN segment, indicating the relationship of the subline item to the baseline item.
SUBLINE_CUST_ITEM_EXT	NULL	VARCHAR2(50)	Subline customer item number, as sent by the customer on the SLN segment.
SUBLINE_CUST_ITEM_ID	NULL	NUMBER	Customer Item unique identifier. FK to RLM_SHIP_FROM_CUST_ITEM.
SUBLINE_MODEL_NUM_EXT	NULL	VARCHAR2(35)	Subline customer model number, as sent by the customer on the SLN segment.
SUBLINE_QUANTITY	NULL	NUMBER	The subline quantity, as sent by the customer on the SLN segment.
SUBLINE_UOM_CODE	NULL	VARCHAR2(3)	The subline unit of measure (internal) cross-referenced from the UOM sent by the customer on the SLN segment. FK to MTL_UNITS_OF_MEASURE.
SUPPLIER_ITEM_EXT	NULL	VARCHAR2(35)	Supplier item number specified by customer
TRANSIT_TIME_EXT	NULL	VARCHAR2(22)	The transit time, as sent by the customer on the TD5 segment.
TRANSIT_TIME_QUAL_EXT	NULL	VARCHAR2(3)	The transit time qualifier, as sent by the customer on the TD-5 segment.

CUST_PRODUCTION_SEQ_NUM	NULL	VARCHAR2(35)	Customer Production Sequence Number
TRANSPORT_LOC_QUAL_EXT	NULL	VARCHAR2(3)	The shipping location qualifier, as sent by the customer on the TD5 segment. This identifies the type of location which specified in the corresponding shipping location.
TRANSPORT_LOCATION_EXT	NULL	VARCHAR2(35)	The specific shipping location (such as pool point or airport) corresponding to the shipping location qualifier, as sent by the customer on the TD5 segment. This corresponds to the shipping location qualifier.
TRANSPORT_METHOD_EXT	NULL	VARCHAR2(3)	The transportation method, as sent by the customer on the TD5 segment.
WEIGHT_EXT	NULL	NUMBER	The weight, as sent by the customer on the TD1 segment.
WEIGHT_QUALIFIER_EXT	NULL	VARCHAR2(3)	The weight qualifier, as sent by the customer on the TD1 segment.
WEIGHT_UOM_EXT	NULL	VARCHAR2(3)	The unit of measure corresponding to shipment weight, as sent by the customer on the TD1 segment.
ITEM_DETAIL_SUBTYPE_EXT	NULL	VARCHAR2(30)	External value from which ITEM_DETAIL_SUBTYPE was derived in EDI Gateway Code Conversion.
ITEM_DETAIL_TYPE_EXT	NULL	VARCHAR2(30)	External value from which ITEM_DETAIL_TYPE was derived in EDI Gateway Code Conversion.
QTY_TYPE_CODE_EXT	NULL	VARCHAR2(30)	External value from which QTY_TYPE_CODE was derived in EDI Gateway Code Conversion.
DATE_TYPE_CODE_EXT	NULL	VARCHAR2(30)	External value from which DATE_TYPE_CODE was derived in EDI Gateway Code Conversion.
FBO_CONFIGURATION_KEY_1	NULL	VARCHAR2(35)	For FBO Production Sequence schedules, the 1st sort key for identifying configurations indicated by the customer
FBO_CONFIGURATION_KEY_2	NULL	VARCHAR2(35)	For FBO Production Sequence schedules, the 2nd sort key for identifying configurations indicated by the customer
FBO_CONFIGURATION_KEY_3	NULL	VARCHAR2(35)	For FBO Production Sequence schedules, the 3rd sort key for identifying configurations indicated by the customer
FBO_CONFIGURATION_KEY_4	NULL	VARCHAR2(35)	For FBO Production Sequence schedules, the 4th sort key for identifying configurations indicated by the customer
FBO_CONFIGURATION_KEY_5	NULL	VARCHAR2(35)	For FBO Production Sequence schedules, the 5th sort key for identifying configurations indicated by the customer
MATCH_KEY_ACROSS	NULL	VARCHAR2(150)	Audit trail of match across key used when this schedule was processed.
MATCH_KEY_WITHIN	NULL	VARCHAR2(150)	Audit trail of match within key used when this schedule was processed.

Oracle Proprietary, Confidential Information--Use Restricted by Contract

CRITICAL_KEY_ATTRIBUTES	NULL	VARCHAR2(150)	Audit trail of critical attributes key used when this schedule was processed. An exception (warning) is generated if one of these is missing on Firm demand.
LAST_UPDATE_DATE	NOT NULL	DATE	Standard Who column
LAST_UPDATED_BY	NOT NULL	NUMBER	Standard Who column
CREATION_DATE	NOT NULL	DATE	Standard Who column
CREATED_BY	NOT NULL	NUMBER	Standard Who column
ATTRIBUTE_CATEGORY	NULL	VARCHAR2(30)	Descriptive Flexfield context column
ATTRIBUTE1	NULL	VARCHAR2(150)	Descriptive Flexfield segment column
ATTRIBUTE2	NULL	VARCHAR2(150)	Descriptive Flexfield segment column
ATTRIBUTE3	NULL	VARCHAR2(150)	Descriptive Flexfield segment column
ATTRIBUTE4	NULL	VARCHAR2(150)	Descriptive Flexfield segment column
ATTRIBUTE5	NULL	VARCHAR2(150)	Descriptive Flexfield segment column
ATTRIBUTE6	NULL	VARCHAR2(150)	Descriptive Flexfield segment column
ATTRIBUTE7	NULL	VARCHAR2(150)	Descriptive Flexfield segment column
ATTRIBUTE8	NULL	VARCHAR2(150)	Descriptive Flexfield segment column
ATTRIBUTE9	NULL	VARCHAR2(150)	Descriptive Flexfield segment column
ATTRIBUTE10	NULL	VARCHAR2(150)	Descriptive Flexfield segment column
ATTRIBUTE11	NULL	VARCHAR2(150)	Descriptive Flexfield segment column
ATTRIBUTE12	NULL	VARCHAR2(150)	Descriptive Flexfield segment column
ATTRIBUTE13	NULL	VARCHAR2(150)	Descriptive Flexfield segment column
ATTRIBUTE14	NULL	VARCHAR2(150)	Descriptive Flexfield segment column
ATTRIBUTE15	NULL	VARCHAR2(150)	Descriptive Flexfield segment column
LAST_UPDATE_LOGIN	NULL	NUMBER	Standard Who column
REQUEST_ID	NULL	NUMBER	Standard Who column
PROGRAM_APPLICATION_ID	NULL	NUMBER	Standard Who column
PROGRAM_ID	NULL	NUMBER	Standard Who column
PROGRAM_UPDATE_DATE	NULL	DATE	Standard Who column
TP_ATTRIBUTE1	NULL	VARCHAR2(150)	Trading Partner flexfield segment column
TP_ATTRIBUTE2	NULL	VARCHAR2(150)	Trading Partner flexfield segment column
TP_ATTRIBUTE3	NULL	VARCHAR2(150)	Trading Partner flexfield segment column
TP_ATTRIBUTE4	NULL	VARCHAR2(150)	Trading Partner flexfield segment column
TP_ATTRIBUTE5	NULL	VARCHAR2(150)	Trading Partner flexfield segment column
TP_ATTRIBUTE6	NULL	VARCHAR2(150)	Trading Partner flexfield segment column
TP_ATTRIBUTE7	NULL	VARCHAR2(150)	Trading Partner flexfield segment column
TP_ATTRIBUTE8	NULL	VARCHAR2(150)	Trading Partner flexfield segment column

Oracle Proprietary, Confidential Information--Use Restricted by Contract

TP_ATTRIBUTE9	NULL	VARCHAR2(150)	Trading Partner flexfield segment column
TP_ATTRIBUTE10	NULL	VARCHAR2(150)	Trading Partner flexfield segment column
TP_ATTRIBUTE11	NULL	VARCHAR2(150)	Trading Partner flexfield segment column
TP_ATTRIBUTE12	NULL	VARCHAR2(150)	Trading Partner flexfield segment column
TP_ATTRIBUTE13	NULL	VARCHAR2(150)	Trading Partner flexfield segment column
TP_ATTRIBUTE14	NULL	VARCHAR2(150)	Trading Partner flexfield segment column
TP_ATTRIBUTE15	NULL	VARCHAR2(150)	Trading Partner flexfield segment column
TP_ATTRIBUTE_CATEGORY	NULL	VARCHAR2(30)	Trading Partner flexfield context column
LINE_NUMBER	NULL	NUMBER	Intermediate ship to address line 1, as sent by the customer on the N3 segment.
INTMED_SHIP_TO_ORG_ID	NULL	NUMBER	Unique identifier for intermediate ship-to organization which relates to INTERMEDIATE_SHIP_TO_ID if intermediate ship-to address is specified. FK to HR_ORGANIZATIONS
LINE_SOURCE	NULL	VARCHAR2(30)	Schedule source for individual line since lines can entered manually too.
ORDER_HEADER_ID	NULL	NUMBER	Unique Order Header identifier indicating the Order that the schedule line is linked to. FK to OE_ORDER_HEADERS
PREFERRED_GRADE	NULL	VARCHAR2(4)	Preferred Grade

Indexes

Index Name	Index Type	Sequence	Column Name
RLM_SCHEDULE_LINE_N1	NOT UNIQUE	5	HEADER_ID
RLM_SCHEDULE_LINE_U1	NOT UNIQUE	5	LINE_ID

RLM_SHIP_DELIVERY_CODES

This table stores the optional Shipment/Delivery Pattern Rules which can then be associated with the customer/item/destination. They are used in the Demand Stream Processor for splitting or consolidating daily or weekly customer requirements from planning and shipping schedules into discrete shipment date/quantity groups which consistently and accurately reflect the customer's expected shipment or delivery patterns. The Rule is in context of the customer-given date qualifier, i.e. delivery or shipment.

Column Descriptions

Name	Null?	Type	Description
SHIP_DELIVERY_RULE_NAME	NOT NULL	VARCHAR2(30)	Unique shipment/delivery rule name
DESCRIPTION	NULL	VARCHAR2(240)	Rule description
MONDAY_PERCENT	NULL	NUMBER	If splitting weekly buckets, the percent of customer requirement quantity which is to be allocated to Monday
TUESDAY_PERCENT	NULL	NUMBER	If splitting weekly buckets, the percent of customer requirement quantity which is to be allocated to Tuesday
WEDNESDAY_PERCENT	NULL	NUMBER	If splitting weekly buckets, the percent of customer requirement quantity which is to be allocated to Wednesday
THURSDAY_PERCENT	NULL	NUMBER	If splitting weekly buckets, the percent of customer requirement quantity which is to be allocated to Thursday
FRIDAY_PERCENT	NULL	NUMBER	If splitting weekly buckets, the percent of customer requirement quantity which is to be allocated to Friday
SATURDAY_PERCENT	NULL	NUMBER	If splitting weekly buckets, the percent of customer requirement quantity which is to be allocated to Saturday
SUNDAY_PERCENT	NULL	NUMBER	If splitting weekly buckets, the percent of customer requirement quantity which is to be allocated to Sunday
USER_MAINTAINABLE_FLAG	NULL	VARCHAR2(1)	Y or N flag that indicates whether this seeded row can be updated by the users
LAST_UPDATE_DATE	NOT NULL	DATE	Standard Who column
LAST_UPDATED_BY	NOT NULL	NUMBER	Standard Who column
CREATION_DATE	NOT NULL	DATE	Standard Who column
CREATED_BY	NOT NULL	NUMBER	Standard Who column
ATTRIBUTE_CATEGORY	NULL	VARCHAR2(30)	Descriptive Flexfield context column
ATTRIBUTE1	NULL	VARCHAR2(150)	Descriptive Flexfield segment column
ATTRIBUTE2	NULL	VARCHAR2(150)	Descriptive Flexfield segment column
ATTRIBUTE3	NULL	VARCHAR2(150)	Descriptive Flexfield segment column

Oracle Proprietary, Confidential Information--Use Restricted by Contract

ATTRIBUTE4	NULL	VARCHAR2(150)	Descriptive Flexfield segment column
ATTRIBUTE5	NULL	VARCHAR2(150)	Descriptive Flexfield segment column
ATTRIBUTE6	NULL	VARCHAR2(150)	Descriptive Flexfield segment column
ATTRIBUTE7	NULL	VARCHAR2(150)	Descriptive Flexfield segment column
ATTRIBUTE8	NULL	VARCHAR2(150)	Descriptive Flexfield segment column
ATTRIBUTE9	NULL	VARCHAR2(150)	Descriptive Flexfield segment column
ATTRIBUTE10	NULL	VARCHAR2(150)	Descriptive Flexfield segment column
ATTRIBUTE11	NULL	VARCHAR2(150)	Descriptive Flexfield segment column
ATTRIBUTE12	NULL	VARCHAR2(150)	Descriptive Flexfield segment column
ATTRIBUTE13	NULL	VARCHAR2(150)	Descriptive Flexfield segment column
ATTRIBUTE14	NULL	VARCHAR2(150)	Descriptive Flexfield segment column
ATTRIBUTE15	NULL	VARCHAR2(150)	Descriptive Flexfield segment column
LAST_UPDATE_LOGIN	NULL	NUMBER	Standard Who column
REQUEST_ID	NULL	NUMBER	Standard Who column
PROGRAM_APPLICATION_ID	NULL	NUMBER	Standard Who column
PROGRAM_ID	NULL	NUMBER	Standard Who column
PROGRAM_UPDATE_DATE	NULL	DATE	Standard Who column
TP_ATTRIBUTE1	NULL	VARCHAR2(150)	Trading Partner Flexfield segment column
TP_ATTRIBUTE2	NULL	VARCHAR2(150)	Trading Partner Flexfield segment column
TP_ATTRIBUTE3	NULL	VARCHAR2(150)	Trading Partner Flexfield segment column
TP_ATTRIBUTE4	NULL	VARCHAR2(150)	Trading Partner Flexfield segment column
TP_ATTRIBUTE5	NULL	VARCHAR2(150)	Trading Partner Flexfield segment column
TP_ATTRIBUTE6	NULL	VARCHAR2(150)	Trading Partner Flexfield segment column
TP_ATTRIBUTE7	NULL	VARCHAR2(150)	Trading Partner Flexfield segment column
TP_ATTRIBUTE8	NULL	VARCHAR2(150)	Trading Partner Flexfield segment column
TP_ATTRIBUTE9	NULL	VARCHAR2(150)	Trading Partner Flexfield segment column
TP_ATTRIBUTE10	NULL	VARCHAR2(150)	Trading Partner Flexfield segment column
TP_ATTRIBUTE11	NULL	VARCHAR2(150)	Trading Partner Flexfield segment column
TP_ATTRIBUTE12	NULL	VARCHAR2(150)	Trading Partner Flexfield segment column
TP_ATTRIBUTE13	NULL	VARCHAR2(150)	Trading Partner Flexfield segment column
TP_ATTRIBUTE14	NULL	VARCHAR2(150)	Trading Partner Flexfield segment column
TP_ATTRIBUTE15	NULL	VARCHAR2(150)	Trading Partner Flexfield segment column
TP_ATTRIBUTE_CATEGORY	NULL	VARCHAR2(30)	Trading Partner Flexfield segment column

Oracle Proprietary, Confidential Information--Use Restricted by Contract

Indexes

<u>Index Name</u>	<u>Index Type</u>	<u>Sequence</u>	<u>Column Name</u>
RLM_SHIP_DELIVERY_CODES_U1	NOT UNIQUE	5	SHIP_DELIVERY_RULE_NAME

RLM_UI_QUERIES

Column Descriptions

Name	Null?	Type	Description
QUERY_ID	NOT NULL	NUMBER	Unique ID assigned to each Query.
QUERY_NAME	NOT NULL	VARCHAR2(240)	Name Assigned by User to the Query
USER_ID	NULL	NUMBER	User id of the Application User who created the Query
DELETE_FLAG	NULL	VARCHAR2(1)	Flag which tells whether Query can be deleted or not
CREATION_DATE	NOT NULL	DATE	Standard Who column
CREATED_BY	NOT NULL	NUMBER	Standard Who column
LAST_UPDATE_DATE	NOT NULL	DATE	Standard Who column
LAST_UPDATED_BY	NOT NULL	NUMBER	Standard Who column
LAST_UPDATE_LOGIN	NOT NULL	NUMBER	Standard Who column

RLM_UI_QUERY_COLUMNS

This table stores the details of Query Criteria for each of the Query in RLM_UI_QUERIES. For each of the field in the Release Workbench Find Window, this table stores a record which has foreign key relationship with RLM_UI_QUERIES.

Column Descriptions

Name	Null?	Type	Description
QUERY_ID	NOT NULL	NUMBER	ID for the Query for which Criteria is being stored
COLUMN_NAME	NOT NULL	VARCHAR2(240)	Name of the field on Find Window whose criteria is being stored
COLUMN_TYPE	NULL	VARCHAR2(200)	Data Type of the Field on Find Window whose criteria is being stored
COLUMN_VALUE	NULL	VARCHAR2(2000)	Query Criteria for the Field (used on Find Window of Release Workbench)
CREATION_DATE	NOT NULL	DATE	Standard Who column
CREATED_BY	NOT NULL	NUMBER	Standard Who column
LAST_UPDATE_DATE	NOT NULL	DATE	Standard Who column
LAST_UPDATED_BY	NOT NULL	NUMBER	Standard Who column
LAST_UPDATE_LOGIN	NOT NULL	NUMBER	Standard Who column

Indexes

Index Name	Index Type	Sequence	Column Name
RLM_UI_QUERY_COLUMNS_N1	NOT UNIQUE	5	QUERY_ID

Oracle Proprietary, Confidential Information--Use Restricted by Contract



Index

C

Column descriptions, 3 – 4
Columns, Who, 3 – 5
Concurrent Program List. *See* Concurrent Program Definitions

D

Database triggers, 3 – 7

F

Foreign keys, 3 – 3
Form List. *See* Form Definitions

I

Indexes, 3 – 6

L

Lookup types. *See* QuickCodes

M

Module List. *See* Module Definitions

Modules, Tables used by, 3 – 7

O

Oracle7 sequences. *See* Sequences

Q

QuickCodes, 1 – 14
Columns that contain, 3 – 4

R

Report List. *See* Report Definitions

S

Sequences, 3 – 6

T

Tables
See also Table and View Definitions
Column descriptions, 3 – 4
Foreign keys, 3 – 3
Indexes, 3 – 6
Primary Keys, 3 – 4
QuickCodes Columns, 3 – 4
Who columns, 3 – 5

U

User Exit List. *See* User Exit Definitions

V

Views, Derivation, 3 – 7

Reader's Comment Form

Oracle Release Management Technical Reference Manual A83736_01

Oracle Corporation welcomes your comments and suggestions on the quality and usefulness of this publication. Your input is an important part of the information we use for revision.

- Did you find any errors?
- Is the information clearly presented?
- Do you need more information? If so, where?
- Are the examples correct? Do you need more examples?
- What features did you like most about this manual? What did you like least about it?

If you find any errors or have any other suggestions for improvement, please indicate the topic, chapter, and page number below:

Please send your comments to:

Oracle Applications Documentation Manager
Oracle Corporation
500 Oracle Parkway
Redwood Shores, CA 94065 USA
Phone: (650) 506-7000 Fax: (650) 506-7200

If you would like a reply, please give your name, address, and telephone number below:

Thank you for helping us improve our documentation.



CAUTION!

This document contains proprietary, confidential information that is the exclusive property of Oracle Corporation.

If you are an Oracle customer, this numbered copy is registered in your site's name. Use, duplication, and disclosure are severely restricted and subject to restrictions stated in your contract with Oracle Corporation.

If you are an Oracle employee, this numbered copy is registered in your name and must be returned if you leave the company. It is your responsibility not to disclose this information to anyone outside of Oracle who is not licensed to use this product. If you have a prospect who needs to see this information, contact mailid APPSAPP to obtain a special nondisclosure agreement.

If you are neither an Oracle customer with a valid contract for the use of this document nor an Oracle employee, then you received this document in an unauthorized manner and are not legally entitled to possess or read it. Please return it immediately to Oracle. You may call collect to the office of the Executive Vice President Applications Division, to arrange its return.

Copy #

