

# UNITED<sup>®</sup>

Model No: VC8129

Handheld vacuum cleaner

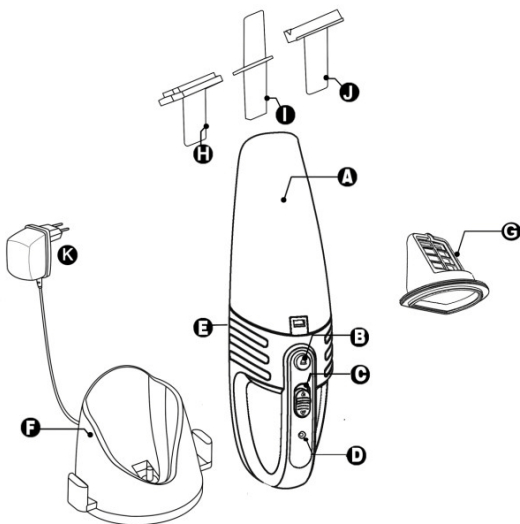
User Manual



## Brief Introduction

Thanks for your purchase of our appliance.  
It is a cordless handy rechargeable vacuum cleaner.  
It is wet and dry, can suck up dust and water easily.  
It is very convenient for home or any similar places.

## General description( Fig. 1)



- A. Dust compartment
- B. Dust compartment release button.
- C. On/off slide
- D. Charging light(LED)
- E. Exhaust air openings
- F. Charge base
- G. Filter unit
- H. Brush tool
- I. Crevice tool
- J. Squeegee
- k. Adaptor

## Important

Read this user manual carefully before you use the appliance and save it for future reference.

### Danger

- Never suck up flammable substances or corrosive liquids and do not suck up ashes until they are cold.
- Never immerse the vacuum cleaner or the charger in water.

### Warning

- Check if the voltage indicated on the appliance corresponds to the local mains voltage before you connect the appliance.
- Do not use the appliance if the plug, the mains cord or other parts are damaged.
- If the cord of the adaptor is damaged, it can not be replaced and the adaptor must be discarded.
- The adaptor and the charge of this appliance can not be replaced. If the adaptor or charger is damaged, the appliance must be discarded.
- This appliance is not intended for use by persons (including children) with reduced physical, sensory or mental capabilities or lack of experience and knowledge, unless they have been given supervision or instruction concerning use of the appliance by a person responsible for their safety.

- Children should be supervised to ensure that they do not play with the appliance.

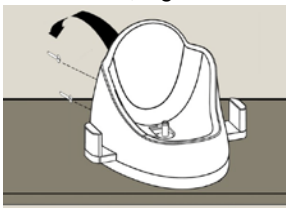
## **Caution**

- Remove the adaptor from the wall socket before you clean the charger.
- Only charge the vacuum cleaner with the adaptor and the charger supplied. During charging, the adaptor feels warm to the touch. This is normal.
- Do not hold the appliance with the dust compartment pointing upwards and do not tilt the appliance to one side when you suck up liquids.
- Always switch off the vacuum cleaner after use.
- The voltage on the contact strips in the charger is low and therefore not dangerous.
- Never block the exhaust air openings during vacuuming.
- Switch off the appliance when you recharge it.
- Always use the vacuum cleaner with the filter unit assembled.
- When you have used the appliance to suck up liquids, empty and dry the dust compartment before you store the appliance in the charger.
- To avoid the risk of electric shock, be careful when you drill holes in the wall to attach the charger, especially close to a wall socket.

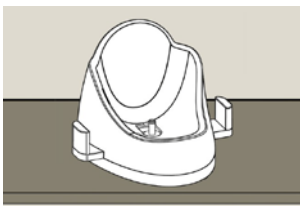
## Preparing for use

### Installing the charger

1. Attach the charger to the wall as shown(Fig.2). If you attach the charger to the wall, the space between the screw holes has to be 3.7 cm.
2. You can also place the charger on a horizontal surface(e.g.a table or desk)(Fig. 3)



(Fig.2)



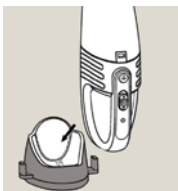
(Fig.3)

### Charging the appliance

Charge the appliance for at least 10 hours every time when the appliance runs out of power.

1. Make sure the appliance is switched off.
2. Put the adaptor in the wall socket, .
3. Place the vacuum cleaner on the charger(Fig.4)

\* The charging light goes on to indicate that the appliance is in charging(Fig.5)



(Fig.4)



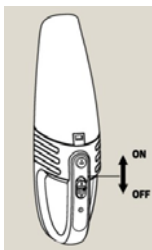
(Fig.5)

**Note:** The charging light stays on as long as the appliance is in the plugged-in charger.

**Note:** The charging light does not give any information about the battery charge level of the vacuum cleaner.

## Using the appliance

1. Push the on/off slide  
Forwards to the switch  
on the appliance.
2. Push the on/off slider  
backwards to switch  
off the appliance (Fig.6) .



(Fig.6)

## Accessories

The appliance comes with the following accessories:

- a brush tool to clean delicate surfaces;
- a crevice tool to vacuum corners or narrow gaps;
- a squeegee to suck up liquid.

1. Take the accessory you want to use.
  2. Attach the accessory to the nozzle of the appliance.
- (Fig.7)

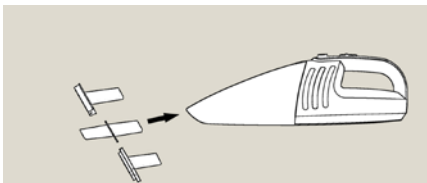


Fig.7

### Sucking up liquid

Connect the squeegee to the appliance.

1. Hold the appliance with the nozzle pointing downwards at an angel of  $30^{\circ}$ .

**Note:** Never hold the appliance with the nozzle pointing upwards when there is liquid in the dust compartment.

**Note:** Do not tilt the appliance to one side or shake the appliance when there's liquid in the dust compartment

3. Place the squeegee on the surface to be cleaned. Make sure the squeegee stays in contact with the surface.

4. Suck up liquid

Stop sucking up liquid when the liquid level inside the dust compartment has reached the maximum indication.

5. Empty and dry the dust compartment each time you have used the appliance to suck up a liquid.

### Cleaning:

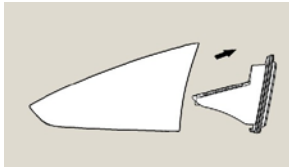
When you have used the appliance to suck up liquid always empty and dry the dust compartment after use. Clean the appliance with a damp cloth.

1. Hold the appliance over a dust bin, press the dust compartment release button(1) and remove the dust compartment(2) .(Fig.8)
2. Remove the filter unit from the main body(Fig.9).
3. Empty the dust compartment by shaking it with the free hand(Fig.10). If necessary, clean the dust compartment with a damp cloth.

Make sure you empty and clean the dust compartment regularly.



(Fig.8)



(Fig.9)



(Fig.10)

**Note:** If there is liquid in the dust compartment, empty the dust compartment and wipe it dry.

4. Clean the filter unit:

Take out the filter unit from the dust compartment

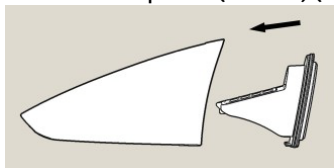


shave it over a dust bin to release the dust. If necessary, clean the filter unit with a damp cloth . clean the filter unit with a brush or with a normal vacuum cleaner if it is very dirty.

Note: If necessary, you can clean the filter unit in cold or lukewarm water. Dry the filter thoroughly before you assemble it to the dust compartment.

5. Put the filter unit back to the dust compartment.  
(Fig.11).

7. To reattach the dust compartment, align the slot on the dust compartment with the projection on the appliance. First attach the bottom of the dust compartment(1) and then push the top of the dust compartment towards the appliance(2) until it locks into place("click")(Fig.12)



(Fig.11)



(Fig.12)

## Storage

You can store the vacuum cleaner and the accessories on the charger.

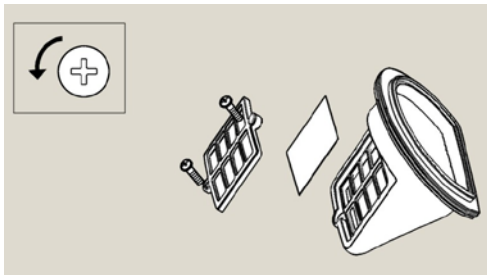
## Replacement

The filter cloth is everlasting. You can wash it. But after long time use, maybe the filtration not that good. You can replace the filter cloth after a prolonged period of use or if you can no longer clean it properly.

### Replacing the filter cloth

1. Remove the filter unit from the dust compartment.
2. Undo the screw of the filter plastic cover. (Fig 13)
3. Gently take off the filter cloth and place a new filter cloth.
4. Do the screw of the filter cover back and fix it properly.
5. Put the filter unit back into the dust compartment.

**Note:** Make sure you screw the filter cover in right position and insert the filter unit in correct way.



(Fig.13)

## Environment

- Do not throw away the appliance with the normal household waste at the end of its life, but hand it in at an official collection point for recycling. By doing this, you help to preserve the environment.
- The build-in rechargeable batteries contain substances that may pollute the environment. Remove the batteries when you discard the appliance. Do not throw away the batteries with the normal household waste, but hand them in at an official collection point.

### Saving energy

If you are not going to use the appliance for a longer period of time, remove the adaptor from the wall socket to save energy.

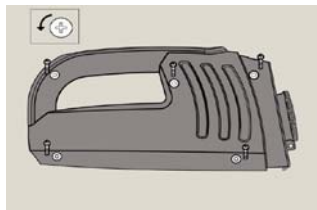
### Disposing of the rechargeable batteries

NiMH or NiCD batteries may explode when exposed to high temperatures or fire.

Only remove the rechargeable batteries if they are completely empty.

Remove the rechargeable batteries in the following way:

1. Let the vacuum cleaner run until it stops, undo the screws and open the vacuum cleaner.(Fig 14)
2. Cut the connecting wires one by one and remove the batteries.(Fig 15)



(Fig. 14)



(Fig. 15)

## Trouble shooting

This chapter summarises the most common problems you could encounter with your vacuum cleaner. Please read the different sections for more details.

Problem	Solution
The appliance does not work	The batteries may be low. Recharge the batteries.
	You may not have put the adaptor properly in the wall socket. Put the adaptor properly in the wall socket.
	The appliance may have been switched on while it was on the charger. Make sure the appliance is switched off when you charge it.

<p>The charging light does not go on</p>	<p>Make sure that the adaptor is inserted properly in the wall socket and that the appliance is switched off.</p>
<p>The vacuum cleaner does not vacuum properly</p>	<p>The dust compartment may not be attached properly to the appliance. Attach the dust compartment properly to the appliance.</p>
	<p>The dust compartment may be full. Empty the dust compartment.</p>
	<p>The filter unit may be clogged. Clean the inner filter and the outer filter(See the chapter"Cleaning")</p>
<p>Dust escapes from the vacuum cleaner</p>	<p>The dust compartment may be full.Empty the dust compartment.</p>
	<p>The dust compartment may not be attached properly to the appliance. Attach the dust compartment properly to the appliance.</p>
	<p>Perhaps the filter unit is not placed properly in the dust compartment. Place the filter unit properly in the dust compartment.</p>

<p>The vacuum cleaner does not work properly when on of the accessories is attached to the nozzle.</p>	<p>The dust compartment may be full. Empty the dust compartment.</p>
	<p>The accessory may be clogged. Remove the obstruction from the accessory.</p>
	<p>The filter unit may be clogged. Clean the inner filter and the outer filter(See the chapter. Cleaning)</p>
<p>The surface is still very wet after vacuuming liquid.</p>	<p>Perhaps the squeegee is not attached to the nozzle. Attach the squeegee to the nozzle when you want to suck up liquid.</p>
	<p>Perhaps you do not hold the appliance in the right way. Hold the appliance with the nozzle pointing downwards at an angle of 30°. Do not tilt the appliance to one side and make sure the squeegee touches the surface to be cleaned.</p>
<p>Liquid leaks from the appliance.</p>	<p>The filter unit may be wet .Make sure the inner filter and the outer filter are dry before you place the filter unit in the dust compartment.</p>

You may not have put the filter unit in the dust compartment. Never use the appliance without the filter unit.

Perhaps the filter unit is not placed properly in the dust compartment. Place the filter unit properly the dust compartment.

Perhaps the amount of liquid in the dust compartment exceeds the maximum indication. Empty the dust compartment immediately and dry it. Never let the dust compartment fill up with liquid beyond the maximum indication.

## Notice about recycling



Your product is designed and manufactured with high quality materials and components which can be recycled and reused.

This symbol means that electrical and electronic equipment, at their end-of-life, should be disposed of separately from your household waste.

Please dispose of this equipment at your local community waste collection/recycling centre. In the European Union there are separate collection systems for used electrical and electronic products. Please help us to conserve the environment we live in!

## DECLARATION OF CONFORMITY

This product complies with the requirements of the directives

EMC-Directive: 2004 / 108 / EEC

Low Voltage Directive: 2006/95/EC

EcoDesign EuP Directive: 2009/278/EC

declaring that model VC8129

is in compliance with the following norms:

EN 55014-1 :2006

EN 55014-2 :1997+A1 :2001

EN 61000-3-2 :2006

EN 61000-3-3 :1995+A1 :2001+A2 :2005

EN 61558-1:1997+A1:1998+A11:2003

EN 61558-2-6:1997

## EXCLUSIVE IMPORTER IN GREECE:

**Amiridis – Savvidis S.A.**

- 33, Vas. Olgas Street – P.O. 54641 – Thessaloniki, Greece.  
Tel: +30 2310-850107, 2310-850108, Fax: +30 2310-867835
- 45 Posidonos St. – O.P. 18344 – Moschato, Athens, Greece  
Tel: +30 210 9402064, Fax: +30 210 9402137  
Web: [www.amiridis-savvidis.gr](http://www.amiridis-savvidis.gr)