



ATTENTION!

Read all safety rules carefully before attempting to operate. Retain for future reference.



DANGER!

Never operate this unit when flammable materials or vapors are present because electrical devices produce arcs or sparks that can cause a fire or explosion.

NEVER OPERATE UNATTENDED!

User manual
Please review before operating vac.

shop•vac[®]

BRAND

Wet/Dry Vacuum • Household and Workshop Use

Series QLH

If you have any questions or suggestions regarding this product, email Improvements at productsupport@improvementscatalog.com

87540-75

IMPORTANT SAFETY INSTRUCTIONS

When using an electrical appliance, basic precautions should always be followed, including the following: **READ ALL INSTRUCTIONS BEFORE USING THIS APPLIANCE.**

⚠ WARNING – TO REDUCE THE RISK OF FIRE, ELECTRIC SHOCK OR INJURY:

- Do not leave appliance when plugged in. Unplug from outlet when not in use and before servicing. Connect to a properly grounded outlet only. See Grounding Instructions.
- Do not expose to rain – store indoors.
- Do not allow to be used as a toy. Close attention is necessary when used by or near children.
- Use only as described in this manual. Use only Manufacturer's recommended attachments.
- Do not use with damaged cord or plug. If appliance is not working as it should, has been dropped, damaged, left outdoors or dropped into water, contact Shop-Vac Corporation for assistance.
- Do Not: pull or carry by cord, use cord as a handle, close a door on cord or pull cord around sharp edges or corners. Do not run appliance over cord. Keep cord away from heated surfaces.
- Do not unplug by pulling on cord. To unplug, grasp the plug; not the cord.
- Do not handle plug or appliance with wet hands.
- Do not put any object into openings. Do not use with any openings blocked; keep free of dust, lint, hair and anything that may reduce air flow.
- Keep hair, loose clothing, fingers and all parts of body away from openings and moving parts.
- Do not pick up anything that is burning or smoking, such as cigarettes, matches or hot ashes.
- Do not use without dust bag and/or filters in place.
- Turn off all controls before unplugging.
- Use extra care when cleaning on stairs.
- Do not use to pick up flammable or combustible liquids such as gasoline or use in areas where they may be present.
- Do not use your cleaner as a sprayer of flammable liquids such as oil base paints, lacquers, household cleaners, etc.
- Do not vacuum toxic, carcinogenic, combustible or other hazardous materials such as asbestos, arsenic, barium, beryllium, lead, pesticides or other health endangering materials. Specially designed units are available for these purposes.
- Do not pick up soot, cement, plaster or drywall dust without cartridge filter and collection filter bag in place. These are very fine particles that may pass through the foam and affect the performance of the motor or be exhausted back into the air. Additional collection filter bags are available.
- Do not leave the cord lying on the floor once you have finished the cleaning job. It can become a tripping hazard.
- Use special care when emptying heavily loaded tanks.
- To avoid spontaneous combustion, empty tank after each use.
- The operation of a utility vac can result in foreign objects being blown into eyes, which can result in eye damage. Always wear safety goggles when operating vacuum.
- STAY ALERT.** Watch what you are doing and use common sense. Do not use vacuum cleaner when you are tired, distracted or under the influence of drugs, alcohol or medication causing diminished control.

SAVE THESE INSTRUCTIONS



WARNING – DO NOT LEAVE VACUUM UNATTENDED WHEN IT IS PLUGGED IN AND/OR OPERATING. UNPLUG UNIT WHEN NOT IN USE.

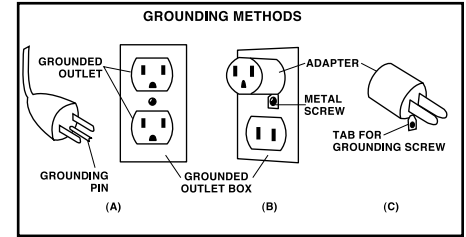
GROUNDING INSTRUCTIONS

This appliance must be grounded. If it should malfunction or breakdown, grounding provides a path of least resistance for electric current to reduce the risk of electric shock. This appliance is equipped with a cord having an equipment-grounding conductor and grounding plug. The plug must be inserted into an appropriate outlet that is properly installed and grounded in accordance with all local codes and ordinances.

⚠ WARNING – IMPROPER CONNECTION OF THE EQUIPMENT-GROUNDING CONDUCTOR CAN RESULT IN A RISK OF ELECTRIC SHOCK. CHECK WITH A QUALIFIED ELECTRICIAN OR SERVICE PERSON IF YOU ARE IN DOUBT AS TO WHETHER THE OUTLET IS PROPERLY GROUNDED. DO NOT MODIFY THE PLUG PROVIDED WITH THE APPLIANCE – IF IT WILL NOT FIT THE OUTLET, HAVE A PROPER OUTLET INSTALLED BY A QUALIFIED ELECTRICIAN.

This appliance is for use on a nominal 120-volt circuit, and has a grounded plug that looks like

the plug illustrated in **sketch A**. A temporary adaptor that looks like the adaptor illustrated in **sketches B and C** may be used to connect this plug to a 2-pole receptacle as shown in **sketch B** if a properly grounded outlet is not available. The temporary adaptor should be used only until a properly grounded outlet (**sketch A**) can be installed by a qualified electrician. The green colored rigid ear, lug or the like extending from the adaptor must be connected to a permanent ground such as a properly grounded outlet box cover. Whenever the adaptor is used, it must be held in place by a metal screw.



NOTE: IN CANADA, THE USE OF A TEMPORARY ADAPTOR IS NOT PERMITTED BY THE CANADIAN ELECTRICAL CODE.

EXTENSION CORDS

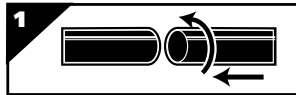
When using the appliance at a distance where an extension cord becomes necessary, a 3-conductor grounding cord of adequate size must be used for safety, and to prevent loss of power and overheating. Use the table below to determine A.W.G. wire size required. To determine ampere rating of your vacuum, refer to nameplate located on rear of motor cover. Before using appliance, inspect power cord for loose or exposed wires and damaged insulation. Make any needed repairs or replacements before using your appliance. Use only three-wire outdoor extension cords which have three-prong grounding-type plugs and three-pole receptacles which accept the extension cord's plug. When vacuuming liquids, be sure the extension cord connection does not come in contact with the liquid.

NOTE: STATIC SHOCKS ARE COMMON IN DRY AREAS OR WHEN THE RELATIVE HUMIDITY OF THE AIR IS LOW. THIS IS ONLY TEMPORARY AND DOES NOT AFFECT THE USE OF THE APPLIANCE. TO REDUCE THE FREQUENCY OF STATIC SHOCKS IN YOUR HOME, THE BEST REMEDY IS TO ADD MOISTURE TO THE AIR WITH A CONSOLE OR INSTALLED HUMIDIFIER.

Volts	Total length of cord in feet			
	25	50	100	150
120V				
Ampere Rating More Than	AWG			
6 - 10	18	16	16	14
10 - 12	18	16	14	12
12 - 16	16	16	14	12
	14	12	Not recommended	

UNPACKING AND SET-UP

1. Pull lid latches in an outward motion, remove tank cover and any accessories that may have been shipped in the tank.
2. Before replacing tank cover, please refer to Dry Pick-Up or Wet Pick-Up Operation in this manual to ensure you have the proper filters installed for your cleaning operation.
3. Replace tank cover, and apply pressure with thumb to each latch until it snaps tightly in place. Make sure all lid latches are clamped securely.
4. Insert machine hose end with locking nut into inlet of tank and tighten. Do not over-tighten.
5. Attach the extension wands to the accessory end of the hose. Twist slightly to tighten the connection. (Figure 1)
6. Attach one of the cleaning accessories (depending on your cleaning requirements) to the extension wands. Twist slightly to tighten the connection. (Figure 1)
7. Plug the cord into the wall outlet. Your cleaner is ready for use.
I = ON, O = OFF

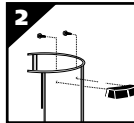


NOTE: MANY MORE USEFUL TOOLS ARE AVAILABLE AT YOUR LOCAL DEALER OR SHOP-VAC® WEBSITE.

SIDE TANK HANDLE ASSEMBLY

(Not standard with all models)

Attach side handles to tank with screws provided (Figure 2).



MOUNTING INSTRUCTIONS

Select mounting location at a wall stud and/or provide a minimum 8" wide x 12" high x 3/4" thick surface which is strong enough to hold the weight of the vacuum unit with a full tank of debris.

⚠ WARNING – INADEQUATE MOUNTING COULD ALLOW THE UNIT TO FALL, CAUSING INJURY AND/OR DAMAGE TO THE UNIT.

1. Secure hanging bracket to mounting surface with 2 screws provided or other suitable fastener. (NOTE: The screws provided are adequate ONLY for mounting into wood. Be sure to use the proper, suitable fasteners for mounting vac to a surface other than wood.) Be sure bracket is level (Figure 3).
2. Install vac by aligning ledge on back of tank to engage as the vac unit is lowered into the hanging bracket (Figure 4).
3. Instructions for installing and removing hose:
 - A. Insert hose into inlet and tighten locking-ring by turning clockwise (Figure 5).
 - B. Unscrew locking-ring by turning counter-clockwise and remove from inlet (Figure 6).
4. Attach one of the cleaning accessories to the accessory end of the hose.
5. Plug the cord into the wall outlet. Your cleaner is ready for use.

I = ON, O = OFF

To avoid possible injury or damage by dislodging unit from hanging bracket or dropping tank

during unlatching, always unplug power cord and remove the entire vac unit from wall bracket to empty tank or service filter. Set unit on floor, lift off tank cover (refer to unpacking and setup). After service, place tank cover on tank securely and reinstall unit into hanging bracket.

The tool holder (not standard with all models) can be mounted on the wall in close proximity to the vacuum (Figure 7). Secure with mounting hardware provided.

NOTE: Many more useful tools are available at your local dealer or Shop-Vac® website.



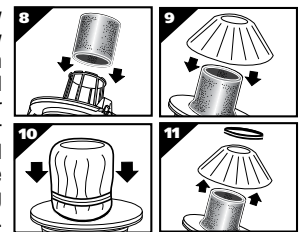
DRY PICK-UP OPERATION

INSTALLING FOAM SLEEVE AND REUSABLE DRY FILTER

(Not standard with all models)

⚠ WARNING – ALWAYS DISCONNECT THE PLUG FROM THE WALL OUTLET BEFORE REMOVING THE TANK COVER.

When using the reusable dry filter to pick up dust and dry material, you must install foam sleeve and reusable dry filter to ensure proper filtration. If the vacuum has been used to pick up liquids, the foam sleeve must be cleaned and dried before installing for dry pick up. With tank cover in an upside down position, slide foam sleeve down over lid cage pulling until foam sleeve completely covers lid cage (Figure 8). Center the reusable dry filter on lid cage (Figure 9), slide mounting ring down over filter until ring is positioned against the ribs of the lid cage (Figure 10). The reusable dry filter should always be in position over the foam sleeve for dry pick-up. To remove the filter for cleaning, remove mounting ring and filter from lid cage (Figure 11). To clean the reusable dry filter, shake off excess dirt and dust or (depending on the condition of the filter) rinse with water. Allow the filter to dry completely and re-install. DO NOT MACHINE WASH OR DRY.



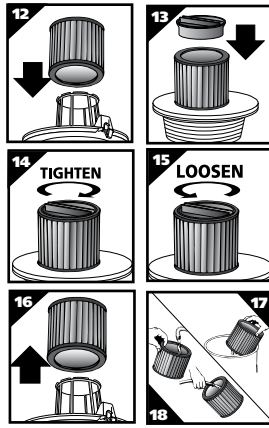
NOTE: ENSURE THAT THE MOUNTING RING IS COMPLETELY SECURE AND IN POSITION BY PRESSING DOWN FIRMLY AROUND THE RING IN SEVERAL PLACES. BE SURE THE REUSABLE DRY DISC FILTER COMPLETELY COVERS THE FOAM SLEEVE. CHECK TO ENSURE THAT ALL EDGES OF THE REUSABLE DRY FILTER ARE SECURE UNDER THE MOUNTING RING.

⚠ CAUTION – KEEP FILTERS CLEAN

INSTALLING THE CARTRIDGE FILTER

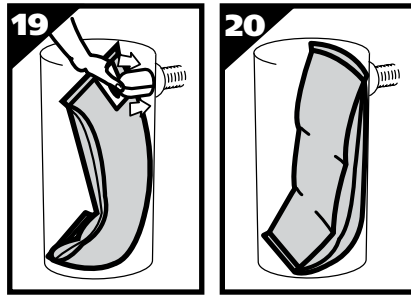
(Not standard with all models)

The cartridge filter can be used for wet or dry pick-up; installation is the same for both. When picking up large quantities of liquid please refer to the Wet Pick-Up Operation section in this manual. Use the cartridge filter in position over the lid cage for most general dry material pick-up. With the tank cover in an upside down position, slide the cartridge filter down over the lid cage, pushing until the filter seals against the cover (Figure 12). Place filter retainer into the top of the cartridge filter, hold the tank cover with one hand, turn the handle on the filter retainer clockwise to tighten, locking the filter into place (Figures 13 & 14). To remove the filter for cleaning, again hold the tank cover and turn the filter retainer counter-clockwise to loosen and remove, slide the cartridge filter off the lid cage (Figures 15 & 16). To clean the cartridge filter shake or brush off excess dirt or rinse (from the inside of the filter) with water, dry completely (approximately 24 hours) and re-install. (Figures 17 & 18). **Note:** If the filter has been used for wet pick-up, it must be cleaned and dried before using for dry pick-up.



INSTALLING THE DISPOSABLE FILTER BAG

1. Grasp cardboard collar firmly and slide rubber guard onto inlet fitting, as firmly as possible (Figure 19).
2. When securely in place, expand and position bag down inside of tank (Figure 20).
3. Use for DRY PICK-UP only.



⚠ WARNING – THIS VACUUM CLEANER FILTER BAG SHOULD ONLY BE USED FOR COLLECTING DRY DIRT AND DEBRIS, SAWDUST, WOOD CHIPS ETC. TO AVOID HEALTH HAZARDS FROM VAPORS OR DUST, DO NOT USE FILTER TO VACUUM TOXIC, CARCINOGENIC OR OTHER HAZARDOUS MATERIALS SUCH AS ASBESTOS, PESTICIDES OR OTHER HEALTH ENDANGERING MATERIALS.

Keep filters clean. Efficiency of the vacuum is largely dependent on the filters. A clogged filter can cause overheating and possibly damage the cleaner. Check filters periodically and replace as required. Replace with manufacturer recommended filter bag.

WET PICK-UP OPERATION

Remove ALL dirt and debris found in the tank. The vacuum requires only a minimum of conversion when going from dry to wet pick-up. Remove all dry use filters from the vacuum. A clean cartridge filter may be used for vacuuming small amounts of liquids. For proper installation of the cartridge filter refer to Installing the Cartridge Filter. For best results when vacuuming large quantities of liquid, remove the cartridge filter. When vacuuming liquids containing debris, it is recommended purchasing a foam sleeve and install over filter cage; otherwise a foam sleeve is not required for wet pick up. Foam sleeve and additional filters may be purchased by visiting our website at www.shopvac.com, contacting our customer service department, or purchasing at your local Shop-Vac® distributor.

Misting in exhaust air may occur if the filter becomes saturated during wet pick-up. If misting occurs, remove filter and allow to dry or, replace with another dry filter to eliminate the misting and possible dripping of liquid around the lid. Turn the unit off immediately upon completing a wet pick-up job or when tank is full and ready to be emptied. Raise the hose to drain any excess liquid into the tank. The interior of the tank should be periodically cleaned.

The foam sleeve should be cleaned periodically as described in the following steps:

1. Always disconnect the plug from the wall receptacle before removing the tank cover. Place tank cover in an upside down position. Remove foam sleeve by sliding it up and off the lid cage.
2. Shake excess dust off foam sleeve with a rapid up and down movement.
3. Hold foam sleeve under running water for a minute or two, rinsing from the inside. A water wash is not always required, depending on the condition of the foam sleeve.
4. Gently wring out excess water, blot foam sleeve with a clean towel, and allow to dry. The foam sleeve is now ready to be reinstalled on the lid cage.

NOTE: WET PICK-UP ACCESSORIES SHOULD BE WASHED PERIODICALLY, ESPECIALLY AFTER PICKING UP WET, STICKY KITCHEN ACCIDENTS. THIS CAN BE ACCOMPLISHED WITH A WARM SOLUTION OF SOAP AND WATER.

EMPTYING LIQUID WASTES FROM THE TANK

Your Shop Vac® Wet/Dry vacuum may be emptied of liquid waste by removing the tank cover. To empty, stop the motor and remove the plug from the wall receptacle. Remove the tank

cover and deposit the liquid waste contents in a suitable drain. After the tank is empty, return the cover to its original position. To continue use, plug the cord into the wall receptacle and start the motor.

AUTOMATIC SUCTION SHUT-OFF

The vacuum is equipped with an automatic suction shut-off that operates when picking up liquids. As the level of the liquid rises in the tank, an internal float rises until it seats itself against a seal at the intake of the motor, shutting off suction. When this happens, the motor will develop a higher than normal pitch noise and the suction is drastically reduced. If this occurs, turn unit off immediately. Failure to turn unit off after float rises and shuts off suction will result in extensive damage to the motor. To continue use, empty the liquid waste from the tank as outlined in the previous paragraph.

NOTE: IF ACCIDENTALLY TIPPED OVER, THE VACUUM COULD LOSE SUCTION. IF THIS OCCURS, PLACE VAC IN UPRIGHT POSITION AND TURN SWITCH OFF. THIS WILL ALLOW THE FLOAT TO RETURN TO ITS NORMAL POSITION, AND YOU WILL BE ABLE TO CONTINUE OPERATION.

LUBRICATION

No lubrication is necessary as the motor is equipped with lifetime lubricated bearings.

STORAGE

Before storing your vacuum cleaner the tank should be emptied and cleaned. The power cord can be wound around the housing of the unit for convenience. Accessories may be stored in the tool holder (not standard on all models) so they can be readily available. **The vacuum should be stored indoors.**

TROUBLESHOOTING

Trouble	Possible Cause	Remedy
Suction weakens or cleaner runs hot	Clogged filter	Brush dirt from filter. If condition continues, change filter.
	Air leak	Check all fittings for tight fit (nozzles, hose, etc.) Check that tank cover is sealed properly.
	Obstruction in hose or nozzle.	Check nozzle, hose, etc. for obstructions, and remove if present.
Misting in the exhaust air	Saturated filter	Replace saturated filter with a dry filter.
Mounting ring falling off	Foam sleeve incorrectly positioned	Position foam sleeve on the outside of groove around lid cage.

⚠ WARNING – IF ANY OF THE MOTOR HOUSING PARTS SHOULD BECOME DETACHED OR BROKEN, EXPOSING THE MOTOR OR ANY OTHER ELECTRICAL COMPONENTS, OPERATION SHOULD BE DISCONTINUED IMMEDIATELY TO AVOID PERSONAL INJURY OR FURTHER DAMAGE TO THE VACUUM. REPAIRS SHOULD BE MADE BEFORE REUSING THE VACUUM.

THREE YEAR HOME USE WARRANTY

Your Shop-Vac® vacuum cleaner is warranted for normal household use, in accordance with the User Manual, against original defects in material and workmanship for a period of three years from date of purchase. Should this product be used for commercial or rental use, a 90 day limited warranty will apply. Shop-Vac Corporation warrants placing this vacuum cleaner in correct operating condition, by repair or parts replacement, during the warranty period, without charge. This warranty does not cover accessories. Use of non-recommended filters and/or accessories may void the manufacturer's warranty. Shop-Vac® assumes no responsibility for damage or faulty performance caused by misuse, careless handling, and where repairs or modifications have been made. Do not attempt to service your vacuum beyond that described in the User Manual. Proof of purchase date is required. The warranty gives you specific legal rights, and you may have other rights which vary from state to state or province to province. This warranty is void outside of the United States and Canada.

Customers in the United States: for product service contact Shop-Vac Corporation, Customer Service, at (570) 326-3557 or go to www.shopvac.com/support. Visit www.shopvac.com for your vacuum's parts list schematic.