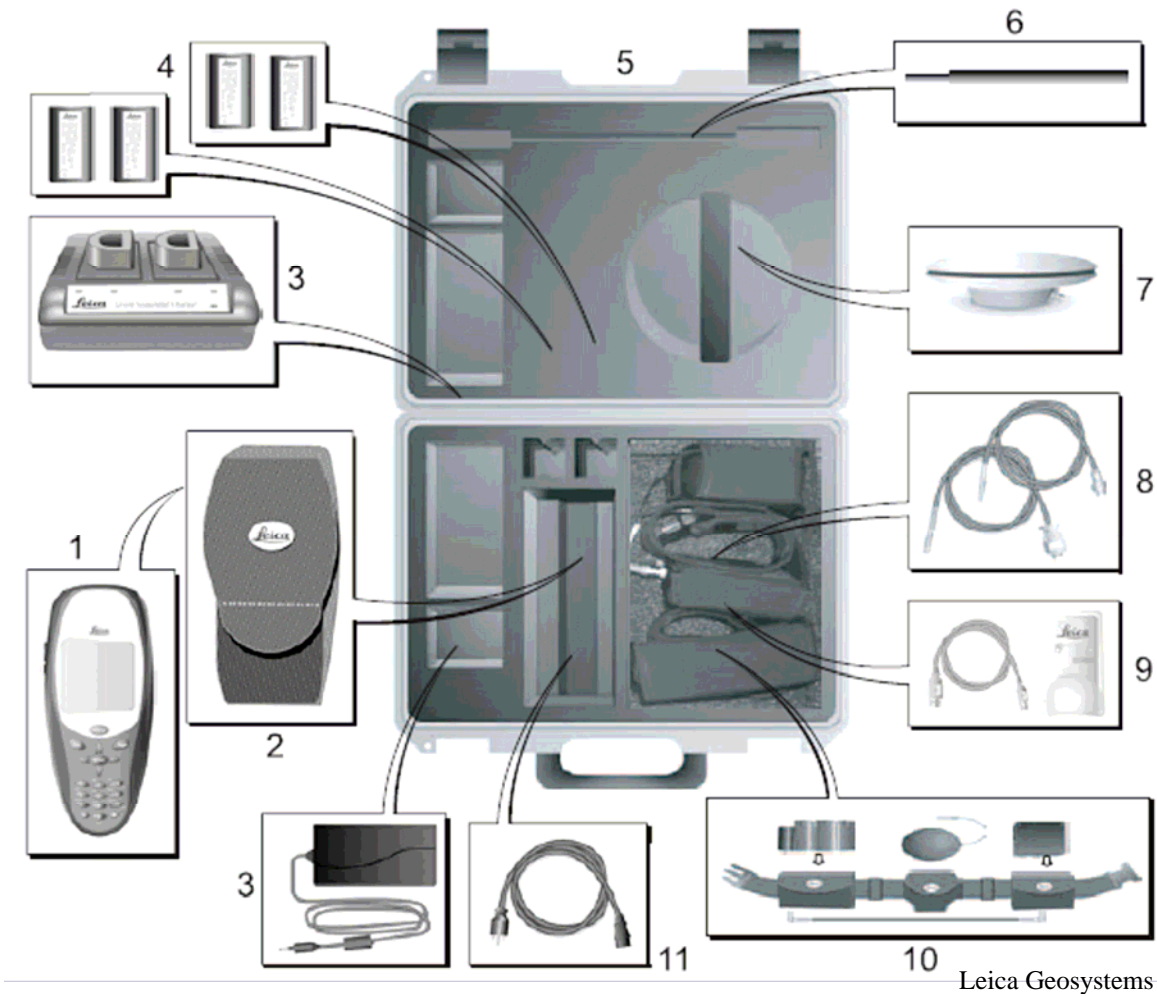


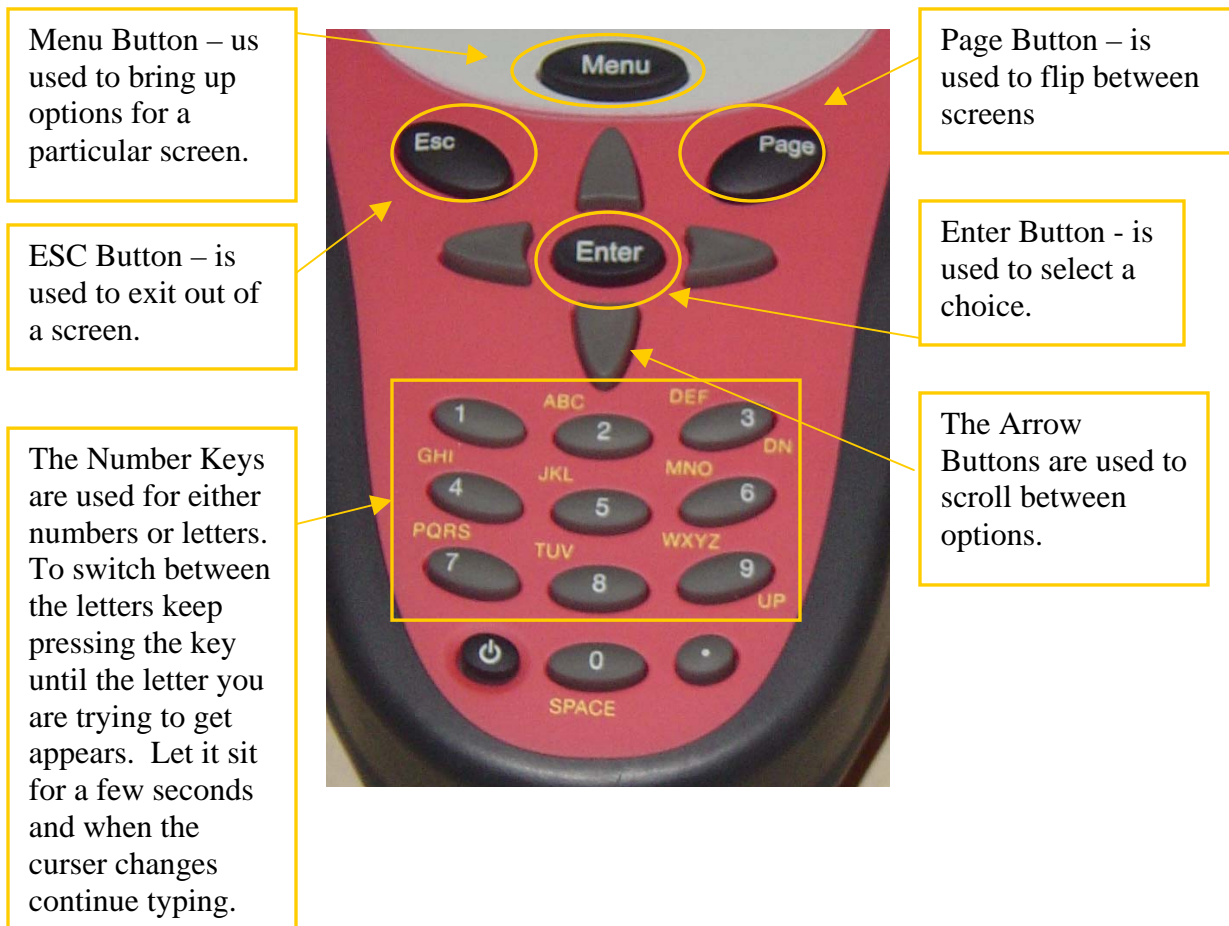
Leica GS20 Tutorial



- 1 GS20 Handheld GPS Receiver
- 2 GS20 Soft Case
- 3 GKL24 Dual Bay Battery Charger
- 4 GEB90 Battery, Li-Ion, 7.2V
- 5 GS20 Carrying Case for WoRCS
- 6 Telescopic Rod
- 7 External Antenna
- 8 Data Transfer Cable and Antenna Cable
- 9 USB Bluetooth Module
- 10 WoRCS Belt
- 11 Power Cord for Dual Bay Charger
- 12 Manuals see page 8

Note: For more information about GS20 and accessories look at “How to Assemble the Leica GS20,” “How to Use GIS DataPRO,” and “How to Use Leica Laser Locator.”

The Keypad



Set Up

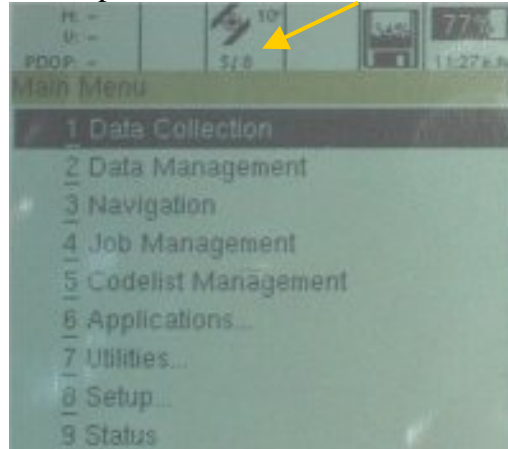
1. Insert the battery into the battery compartment, and then shut and rotate the lock 90 degrees clockwise to lock the door.



2. Press the power button to turn on the GS20.



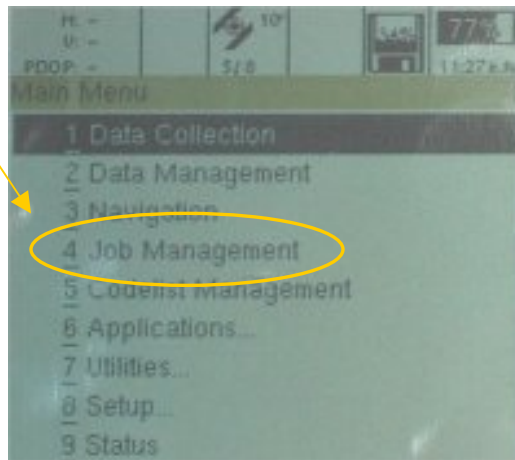
3. Let the GS20 acquire the satellites. This may take a minute. As the satellites are acquired, they will show up below the satellite icon.



Note that if the GS20 has not been used in a while, the GS20 will have to create a new almanac. This can take up to 30 minutes. The default setting for the GS20 must have acquired at least 4 satellites to start collecting data.

Job Management

1. Job Management allows you to select another job after a job has been opened to create a new job. To get to Management, return to the Main Menu and select “Job Management.”



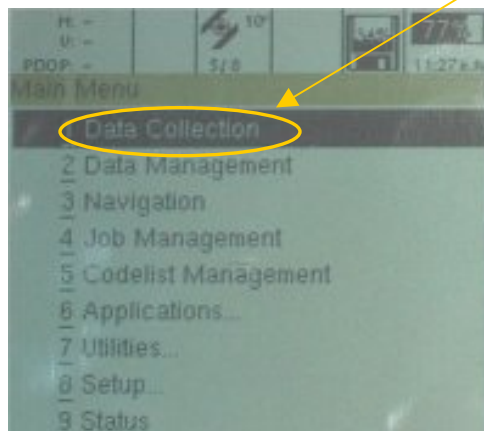
2. To change jobs just scroll to the job that you would like to open and select it.

| Name | Created |
|--------------------------------------|----------|
| <input checked="" type="radio"/> JEN | 10/10/05 |
| <input type="radio"/> JOB01 | 06/16/04 |
| <input type="radio"/> JOB02 | 05/04/05 |
| <input type="radio"/> JOB03 | 08/25/05 |
| <input type="radio"/> JOB04 | 08/25/05 |
| <input type="radio"/> JOB05 | 08/25/05 |
| <input type="radio"/> JOB06 | 09/20/05 |
| <input type="radio"/> JOB07 | 09/29/05 |
| <input type="radio"/> JOB08 | 09/29/05 |

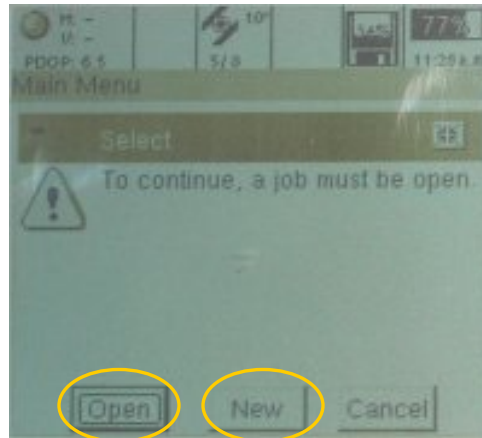
- To create a new job press the Menu button and select Create New Job. Then just fill in the information as described in the Collecting Data section that follows.

Collecting Data

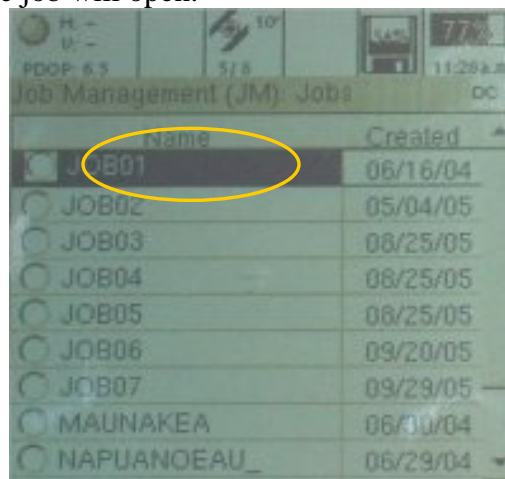
- To start collecting data use the arrow buttons to scroll to “Data Collection” and press the Enter key.



- If there are no current jobs open, then a message shows up saying “To continue, a job must be open.” If you are adding to an existing job select “Open,” if not select “New.”

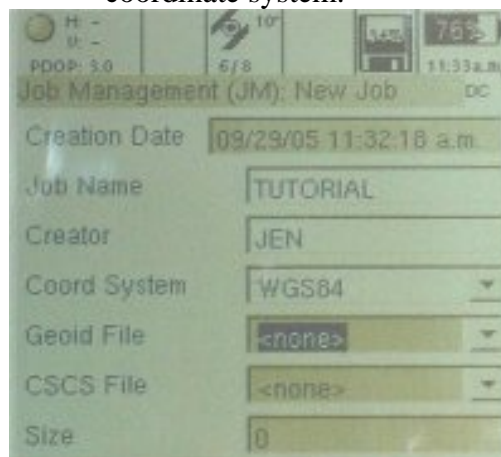


- a. If you selected “Open”, select the job that you want to add to, press Enter and the job will open.

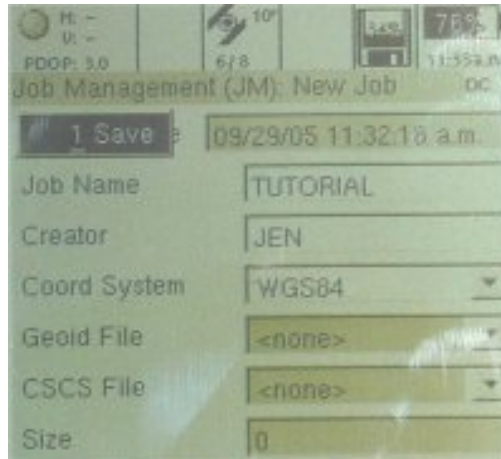


- b. If you selected “New”

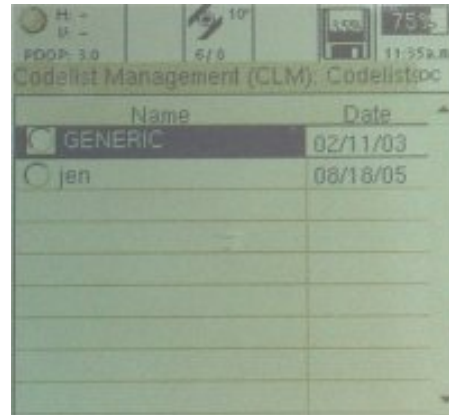
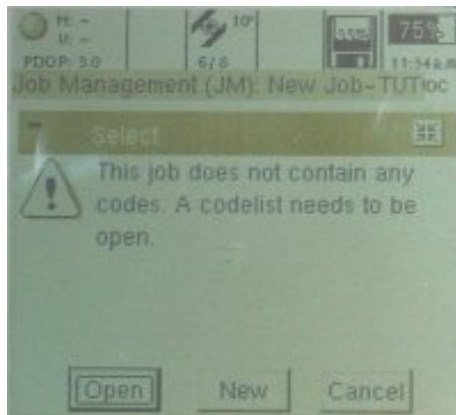
- I. Give the job a name, creator, and keep WGS84 as the coordinate system.



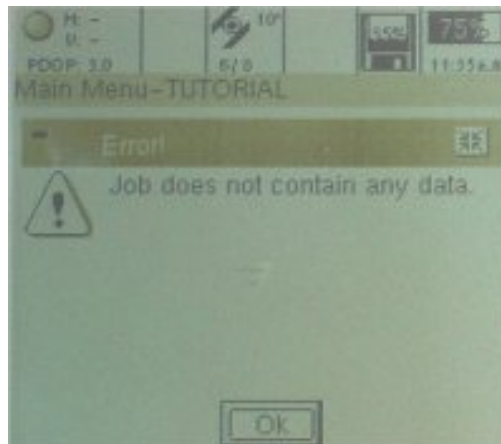
- II. Then press the Menu button and select “Save”. Give the Leica GS20 a minute to process your request.



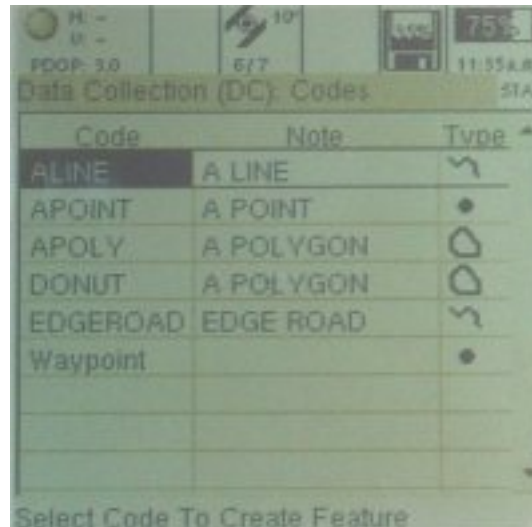
- III. Next, it will ask you to select a codelist. Select “Open” in the options. Select “GENERIC”, unless you have created a codelist (for more information about creating a codelist, please look in the “DataPRO Tutorial”).



- IV. An error message saying that the job does not contain any data shows up; select “Ok”. The GS20 will automatically open the new feature window to start collecting data.

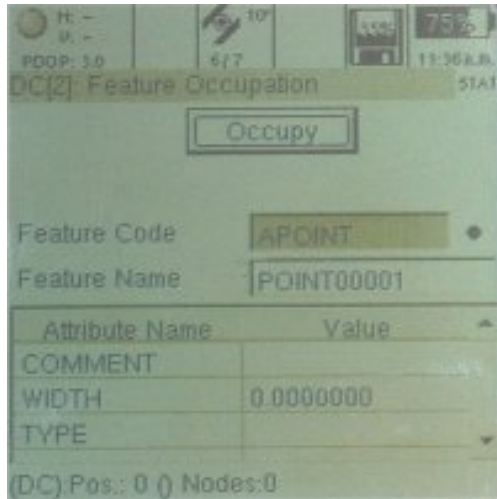


3. To start collecting data press Enter and then select the type of feature that you want to add. To get back to the “New Feature Menu” at anytime in the Data Collection section press Enter.



Creating a Point Feature

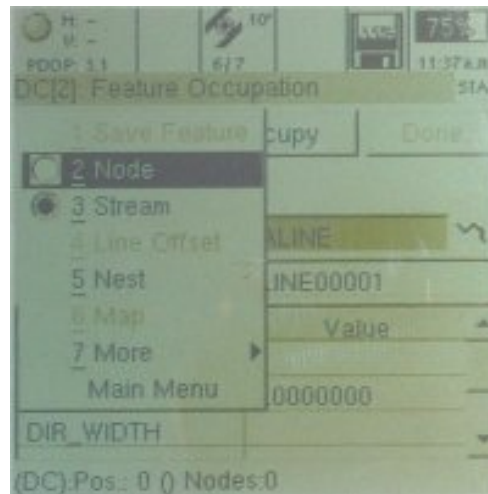
Select “APOINT” in the New Feature Menu. Name the point, then select “Occupy” and the GS20 will start collecting the data for the point. Hold the GS20 as still as possible. When the GS20 finishes collecting the data the “Occupy” button will change to the “Save Feature” button. To make a comment about the point, go to the comment section under “Attribute Name”, press Enter, and then type your comment.



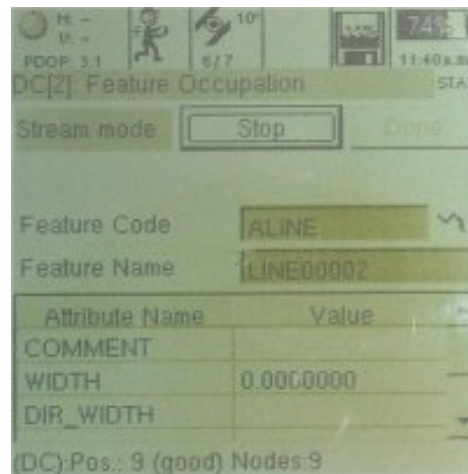
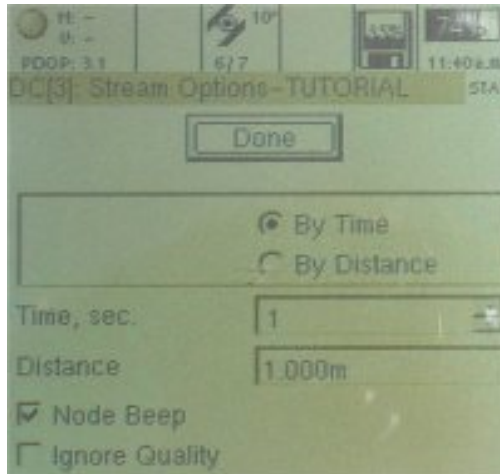
Creating a Line Feature

Select “ALINE” in the New Feature Menu. There are two options for collecting data in a line feature: node and stream. Node allows the user to select the point that will be collected, while stream the GS20 will collect a point at a selective interval either by time or distance.

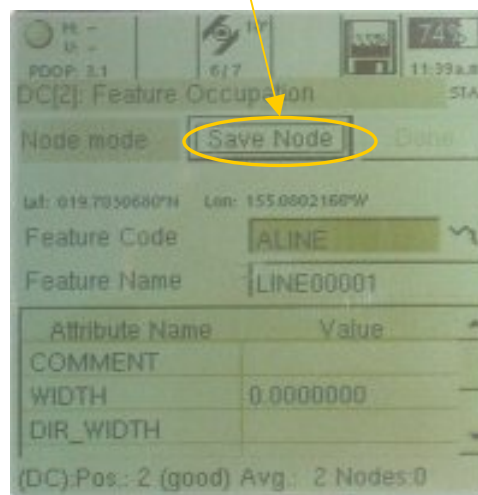
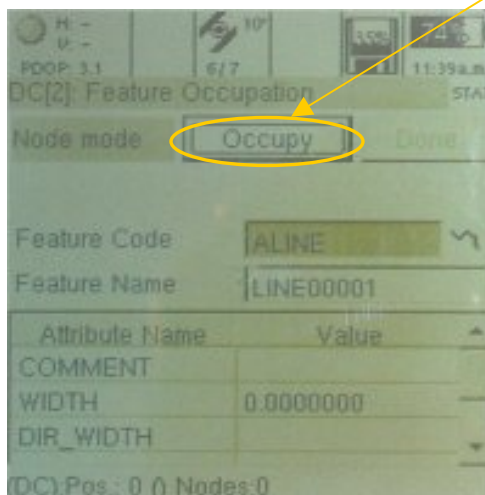
- a. To see which setting is currently selected, click “Menu” and the attribute screen will popup. To change the selection, go to either “Node” or “Stream” and press “Enter.”



- b. Using the “Stream” selection: When you select stream, a menu will appear that allows you to select how the GS20 collects the data. Set the GS20 to collect either by time or by distance, and the interval. Then click “Done.” Click “Occupy” and walk the path for which you would like to collect data. When done, click “Done.”



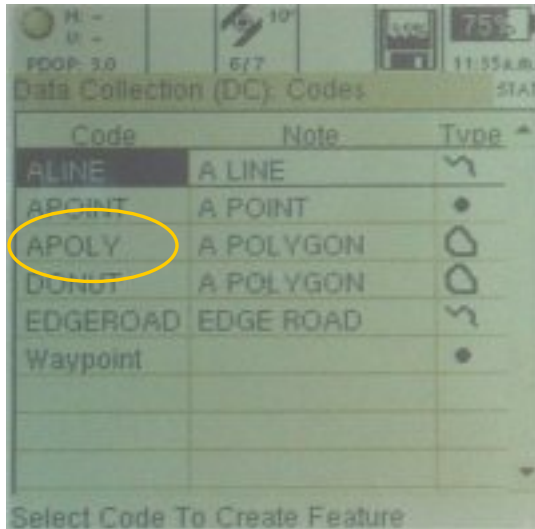
- c. Using the “Node” selection: Click “Occupy” and then click Enter where you would like a node on the line to be. When the GS20 has collected the node that you want, select “Save Node”, similar to collecting points. When the line is complete, select “Done.”



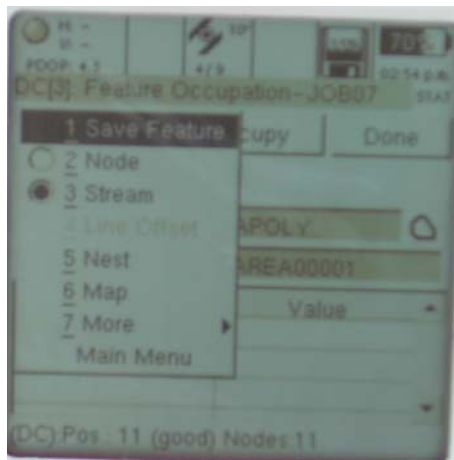
Creating a Polygon

1. To add a polygon, select “APOLY” in the New Feature Menu.



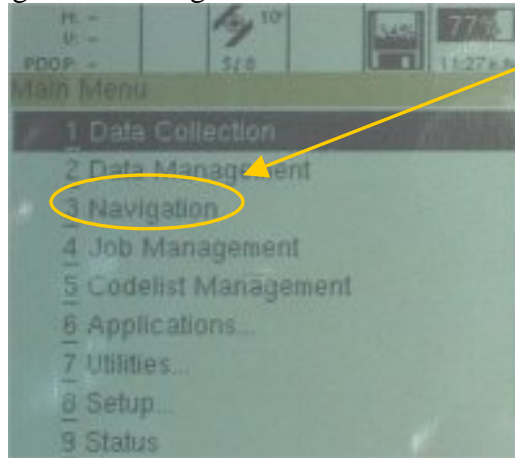


- Collecting data for a polygon is similar to collecting line data. The data can be collected as either a stream or as nodes. To start collecting data select “occupy” and collect the points. When finished select “Stop” and/or “Done.”

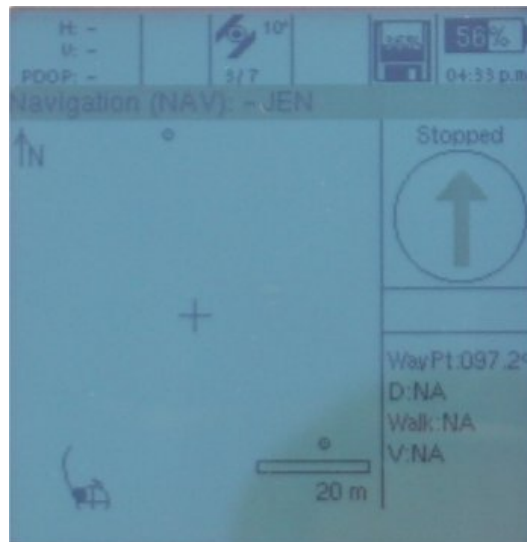


Navigating

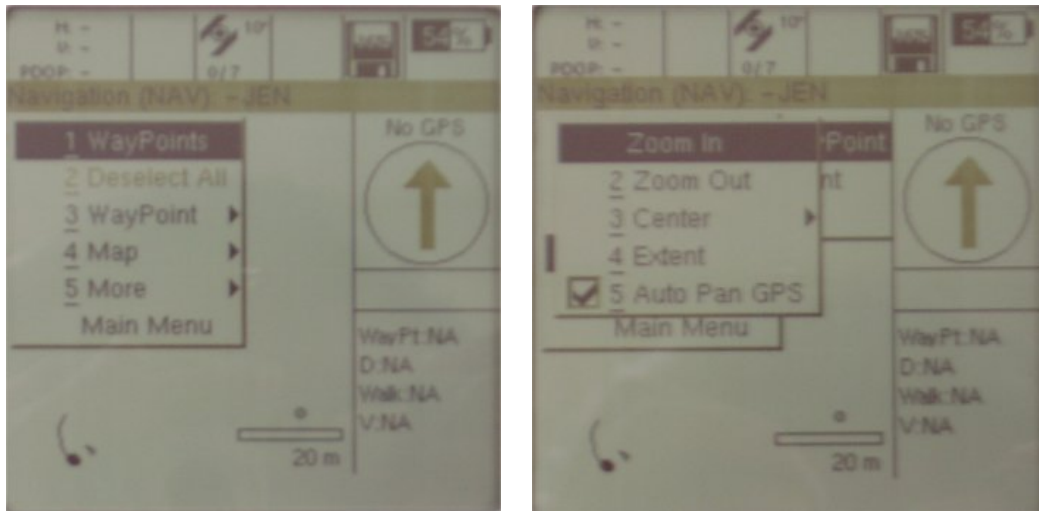
1. To get to the navigation screen go back to the Main Menu and select “Navigation”



2. The navigation screen will show up with a compass, current location, and any features that you have collected.



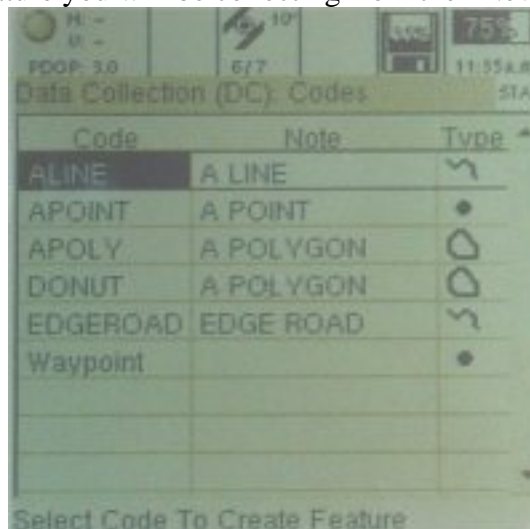
- To change the map view click “Menu” then select “Map.” Then select if you want to zoom in, zoom out, center on a feature, the extent for the map, or if you want it to Auto Pan.


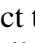


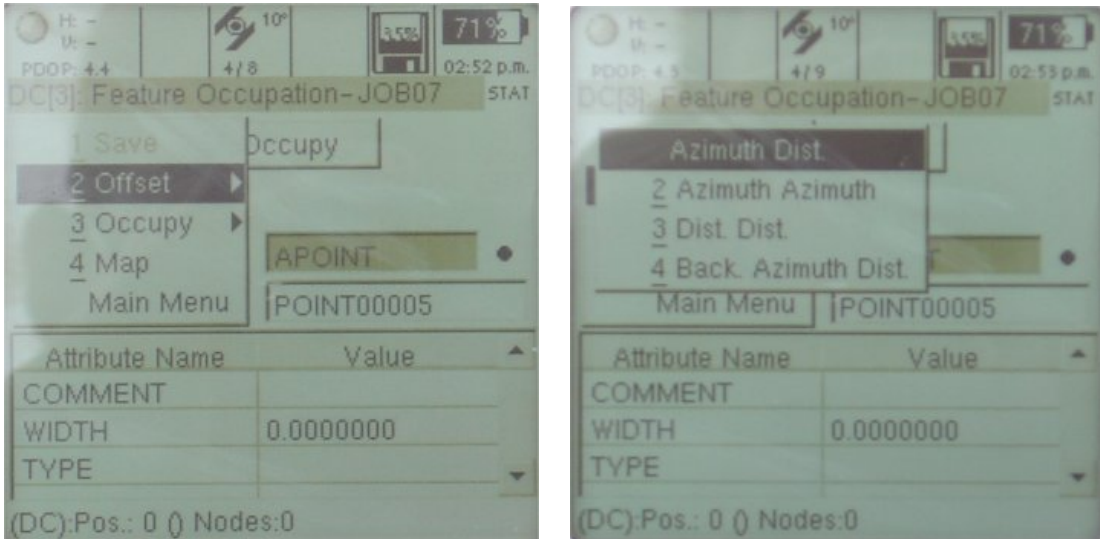
Offsets

An offset can be used with any type of data collection. It can be done either manually or with the Leica Laser Locator. For more information about the Leica Laser Locator refer to either “Leica Laser Locator Tutorial” or the [Leica Laser Locator User Manual](#). For information on connecting the Leica Laser Locator to the Leica GS20 refer to “How to Assemble the Leica GS20 with WoRCS Belt.”

- First select the feature you will be collecting from the “New Feature Menu.”



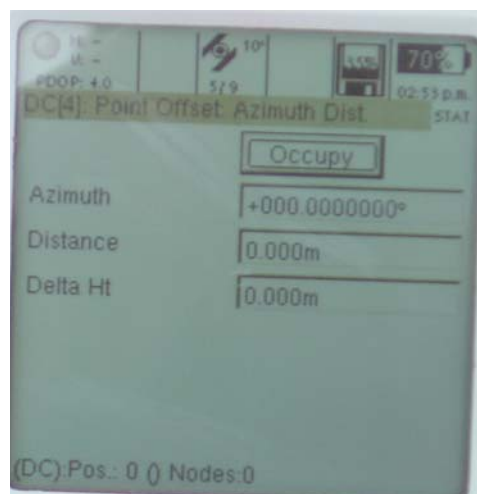
2. When the “Feature Occupation” menu comes up, press the menu button , scroll down, and select “Offset”  then select the type of offset you will be using. To view the types of offsets and how to collect them, look at “Leica Laser Locator Tutorial.”



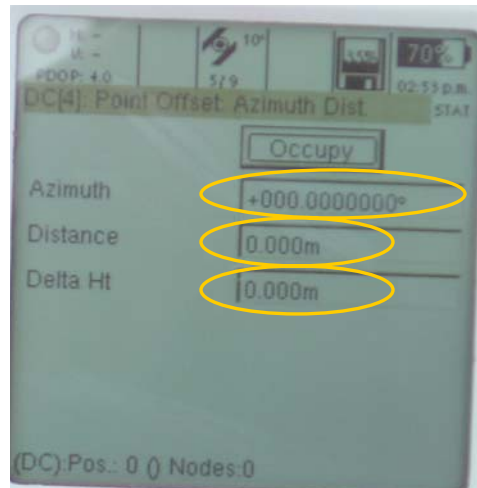
3. Collecting the data

- A. Next, if you are using the Lecia Laser Locator, press the buttons that are required for the offset you plan on using and then select “Occupy.”

Note: The Leica GS20 and the Leica Laser Locator do not always like to communicate. If this happens just manually input the offsets.



- B. Next, if you are manually inputting the offset enter the amount you are offsetting and select “Occupy.”



4. Next save feature and continue collecting data.

Enjoy using the Leica GS20. For more information about the Leica GS20, please refer to the [GS20 Field Guide](#) or [GS20 User Manual](#). For more information about the Leica Laser Locator, please refer to the [Leica Laser Locator Tutorial](#) or [Leica Laser Locator User Guide](#).

References

Leica Geosystems GS20 User Manual, Leica Geosystems.