

OSHA COMPLIANCE traffic studies Lavg **MSHA COMPLIANCE**
 continuous noise *Noise Ordinance Enforcement* time history profiles % Dose
INDUSTRIAL NOISE CONTROL Pascal Squared Hours Lpk
Individual Full Exposure Assessment **FULL-SHIFT SAMPLING** C - A
 impulse noise Area Mapping **COMMUNITY NOISE MEASUREMENTS**
 Time-Weighted Average *Dose* personal noise verification Action Level schools & universities
 Amplitude Distribution Statistics plant surveys **LAW ENFORCEMENT AGENCIES**
 Projected Dose **PERMISSIBLE EXPOSURE LEVEL** decibels
 hearing conservation compliance TWA
 military applications impact noise **WORK SITE ASSESSMENTS**



Noise Dosimeters

www.quest-technologies.com





“The **ONE & ONLY** System Solution”

Quest Technologies is one of the most widely recognized and respected manufacturers worldwide for safety and industrial hygiene instrumentation and software. It is through our lifelong commitment to continuous quality improvement, product innovation and a mission to delight our customers that we have achieved this status. Our expertise is the measurement, analysis and reporting of exposures to noise, vibration, heat stress, indoor air quality and toxic/combustible gases. We are unique in providing safety and industrial hygiene professionals with “The **ONE & ONLY** System Solution” to occupational and environmental exposure monitoring and information management – *QuestSuite® for Windows®*. QuestSuite is a powerful, integrated software solution that brings information from all datalogging Quest instruments together in one place.

Quest Technologies is an ISO 9001 Registered Company and A2LA ISO/IEC Guide 25 Accredited Calibration Laboratory, which ensures that every Quest brand instrument is designed, built and serviced with quality and a sincere commitment to customer satisfaction. Our full line of instrumentation includes:

- Sound Level Meters
- Personal Noise Dosimeters
- Heat Stress Monitors
- Audiometer Analyzers
- Bio-Acoustic Simulators
- Octave Band Analyzers
- Indoor Air Quality Monitors
- Gas Detection Monitors
- Vibration Monitors
- Outdoor Noise Monitoring Systems

We invite you to review the information contained in this brochure with respect to our highly successful family of noise dosimeters. You may review our entire line of products by visiting us at www.quest-technologies.com. For additional assistance, please contact our customer service representatives at: (800) 245-0779 within the U.S., Canada & Puerto Rico, (262) 567-9157 elsewhere, fax us at (262) 567-4047 or e-mail us at sales@quest-technologies.com.

QUICK REFERENCE

FEATURES CHART

Choose the Monitor that Best Suits Your Needs	Q-100	Q-200/ Q-220P	Q-300	Q-400	Q-500
ACCURACY					
Precision Type 1					
General Purpose Type 2					
NOISE DOSIMETER					
INTEGRATING SOUND LEVEL METER					
PEAK SOUND LEVEL METER					
TIME HISTORY MONITOR					
AMPLITUDE (STATISTICAL) DISTRIBUTION MONITOR					
SURVEY (EVENT) MONITOR					
EXCEEDANCE LEVEL MONITOR					
REAL-TIME CLOCK					
RECORDED STATISTICS					
For Entire Test:					
Lav					
Leq					
Lmax					
Lpeak					
TWA					
Dose					
Projected Dose					
Upper Limit Level					
Lmin					
Pa ² /hrs.					
SEL					
C - A					
For Each Time History Interval:					
Lav					
Lmax					
Lpeak					
USER SELECTABLE CRITERIA					
Weighting (A or C)					
Weighting (A and C)					
Response Rate (Fast or Slow)					
Exchange Rate (3, 4, 5, or 6dB)					
Criterion Level					
Threshold Levels (Cutoffs)					
Upper Limit Level					
Time History Interval Length					
AUTOMATIC START/STOP RECORDING					
KEYPAD SECURITY CODE					
OUTPUTS REPORTS DIRECTLY TO PRINTER		Q-220P			
TRANSFER DATA TO PC					
OPTIONS					
Outdoor Measurement System					
QuestSuite Software					

QUEST NOISE DOSIMETERS

Applications:

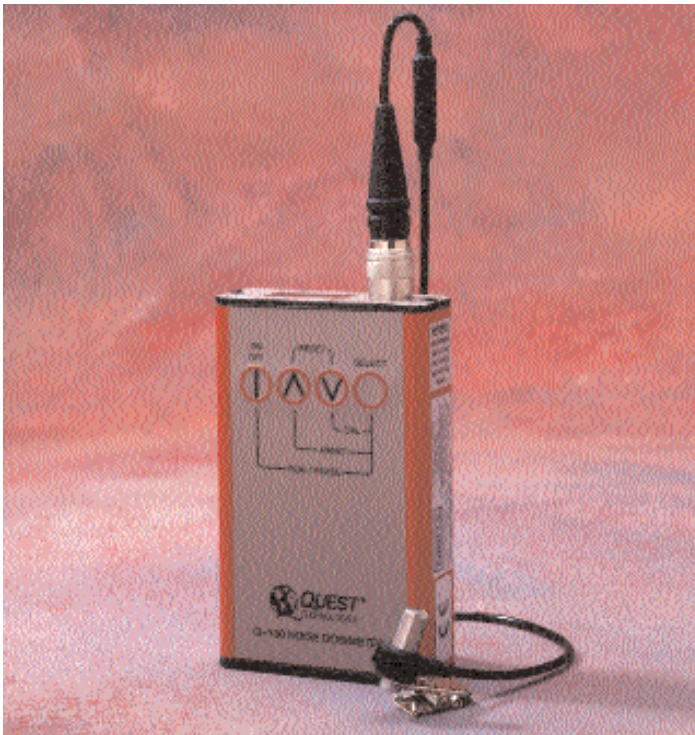
- Industrial Noise Control
- Hearing Conservation Compliance
- Community Noise Measurements
- Law Enforcement Agencies
- MSHA Compliance
- Work Site Assessments
- Personal Noise Verification
- Military Applications
- OSHA Compliance
- Traffic Studies



Q-Series Noise Dosimeters are designed to provide professionals with comprehensive tools for assessing and managing occupational and environmental noise. Q-Series Noise Dosimeters consist of a cable-mounted microphone that converts sound pressure into an electrical signal that is conditioned, monitored and integrated over time in order to provide a host of automatically calculated values pertinent to occupational and environmental noise assessments. Programmable test variables permit Q-Series Noise Dosimeters to serve virtually any application.

Standard accessories for all Q-Series Noise Dosimeters include a pendant microphone, SLM adapter, calibrator adapter and user manual. The SLM adapter converts the noise dosimeter to a powerful integrating sound level meter. The calibrator adapter mates the dosimeter's microphone with Quest's QC-Series Acoustical Calibrators for convenient field calibration. Optional single and multi-unit dosimeter field kits combine the dosimeter and standard accessories with an acoustical calibrator in a single, convenient storage case. Field kits can also optionally include QuestSuite for Windows – the heart of The ONE & ONLY System Solution.

Q-100 COMPACT DATALOGGING NOISE DOSIMETER



The Q-100 is a compact, rugged Type 2 datalogging noise dosimeter perfect for applications where small size and weight are key to worker acceptance, while detailed worker exposure profiles and industrial-grade durability are also demanded. The slim Q-100 design is achieved in a lightweight, shock-resistant metal case making it suitable for use in the harshest industrial environments. All datalogging functions are exclusively programmable via computer using QuestSuite which limit the opportunities for unauthorized changes to the instrument's setup parameters. Simple, four-button control and clearly marked operating functions permit a novice to operate the Q-100 with little or no instruction. The Q-100 interfaces with QuestSuite for Windows for fast and convenient data storage, retrieval, analysis, reporting and charting.

Key Benefits:

- Obtain the Benefits of The One & Only System Solution -- QuestSuite for Windows
- Minimize Training & Re-Training With Simplified Four-Button Operation
- Increase Worker Acceptance With Exceptionally Small Size and Weight
- Minimize In-Field Tampering With Exclusively Computer-Controlled Setup
- Retain Setup and Test Data During Battery Changes With Lithium Battery Backup
- Perform Unattended Monitoring Using Programmable Automatic Run Times
- See Detailed Time History Exposure Data Using Logging Intervals as Short as 1 Second
- Avoid Frequent Data Downloads with Memory Large Enough for Potentially Hundreds of Hours of Datalogging
- Quickly See & Document Detailed Results In The Field with Report-Ready Parallel Printer Interface
- Avoid Accidental Test Interrupts or Erasure of Data Using Keypad Security Code
- Conduct More Than a Week of Full-Shift Monitoring Without a Battery Change
- Avoid Full-Shift Monitoring of Continuous or Cyclical Noise Using Automated Full-Shift Projected Dose Calculation
- Confidently Determine Compliance With Occupational Noise Standards Using Automated TWA Calculations
- Maximize Measurement Integrity With Simple, Electronic Field Calibration
- Satisfy Multiple Measurement Applications With Selectable Frequency Weightings, Response Times, Exchange Rates, Threshold Levels, Criterion Levels and Measurement Ranges
- Experience Years of Red, Rugged & Reliable Performance From The Heavy Duty Metal Housing With Exceptional EMI/RFI Resistance
- Ensure Your Complete and Continuous Satisfaction With a Commitment to Quality Product Design, Manufacture and Service Only Obtainable From an ISO 9001 Registered Company and A2LA ISO/IEC Guide 25 Accredited Calibration Laboratory

Q-200/Q-220P NOISE DOSIMETER

The Q-200 is an easy-to-use combination personal noise dosimeter and integrating sound level meter in one package for applications where summary test results viewed from the instrument's display will suffice. Operating instructions are so simple we've placed them on the inside of the instrument's protective keypad cover plate. Two security levels protect your work from accidental setup changes, turn-off or reset. The Q-200 displays SPL, Min and Max levels, Peak Level, Averages (Leq or Lavg), TWA, SEL, Dose, Projected Dose and Exposure in Pascal Squared Hours. For applications where hard copy documentation of summary test results is required, you will want the Model Q-220P. The Q-220P adds an output port capable of sending fully formatted summary reports directly to parallel printers.



Key Benefits:

- Get A Powerful Dosimeter & Integrating Sound Level Meter In One Instrument
- Quickly See & Document Test Results In The Field With Report-Ready Parallel Printer Interface (Model Q-220P Only)
- Avoid Eye Strain With The Large, Easy-To-Read Custom Display
- Enjoy Simple, Convenient Operation Using Large, Clearly Marked Operator Controls
- Change Battery Easily With No Tools Required
- Conveniently Reference Operating Instructions Located Where and When You Need Them -- On The Protective Cover Plate
- Save Time And Money Testing for Multiple Standards Simultaneously Using "Three Dosimeters In One" Feature
- Conduct More Than a Week of Full-Shift Monitoring Without a Battery Change
- Avoid Full-Shift Monitoring of Continuous or Cyclical Noise Using Automated Full-Shift Projected Dose Calculation
- Confidently Determine Compliance With Occupational Noise Standards Using Automated TWA Calculations
- View Summary Results In The Field Directly From The Instrument
- Maximize Measurement Integrity With Simple, Electronic Field Calibration
- Avoid Accidental Test Interrupts or Erasure of Data Using Keypad Security Codes
- Satisfy Multiple Measurement Applications With Selectable Frequency Weightings, Response Times, Exchange Rates, Threshold Levels, Criterion Levels and Measurement Ranges
- Experience Years of Red, Rugged & Reliable Performance From The Heavy Duty Metal Housing With Exceptional EMI/RFI Resistance
- Ensure Your Complete and Continuous Satisfaction With a Commitment to Quality Product Design, Manufacture and Service Only Obtainable From an ISO 9001 Registered Company and A2LA ISO/IEC Guide 25 Accredited Calibration Laboratory

Q-300 DATALOGGING NOISE DOSIMETER



The Q-300 is a comprehensive datalogging personal noise dosimeter and integrating sound level meter in one package. The Q-300 fulfills applications where detailed exposure profiles are needed and computer analysis, storage, retrieval, reporting and charting are important. Operating instructions are so simple we've placed them on the inside of the instrument's protective keypad cover plate. Two security levels protect your work from accidental setup changes, turn-off or reset. The Q-300 displays SPL, Min and Max levels, Peak Level, Averages (Leq or Lavg), TWA, SEL, Dose, Projected Dose and Exposure in Pascal Squared Hours. A Q-300's Event function makes surveying a variety of locations easy. Just keep track of where you went and the Q-300 will do the rest, keeping information separated in memory so you can analyze each location individually or combine events in QuestSuite. The Q-300 interfaces with QuestSuite for Windows.

Key Benefits:

- Obtain the Benefits of The One & Only System Solution -- QuestSuite for Windows
- Easily Survey Multiple Locations with "Event" Function
- Get A Powerful Dosimeter & Integrating Sound Level Meter In One Instrument
- Quickly See & Document Test Results In The Field with Report-Ready Parallel Printer Interface
- Avoid Eye Strain With The Large, Easy-To-Read Custom Display
- Enjoy Simple, Convenient Operation Using Large, Clearly Marked Operator Controls
- Change Battery Easily With No Tools Required
- Conveniently Reference Operating Instructions Located Where You Need Them -- On The Protective Cover Plate
- Save Time And Money Testing for Multiple Standards Simultaneously Using "Three Dosimeters In One" Feature
- Conduct More Than a Week of Full-Shift Monitoring Without a Battery Change
- Avoid Full-Shift Monitoring of Continuous or Cyclical Noise Using Automated Full-Shift Projected Dose Calculation
- Confidently Determine Compliance With Occupational Noise Standards Using Automated TWA Calculations
- View Summary Results In The Field Directly From the Instrument
- Maximize Measurement Integrity With Simple, Electronic Field Calibration
- Avoid Accidental Test Interrupts or Erasure of Data Using Keypad Security Codes
- Satisfy Multiple Measurement Applications With Selectable Frequency Weightings, Response Times, Exchange Rates, Threshold Levels, Criterion Levels and Measurement Ranges
- Experience Years of Red, Rugged & Reliable Performance From The Heavy Duty Metal Housing With Exceptional EMF/RFI Resistance
- Ensure Your Complete and Continuous Satisfaction With a Commitment to Quality Product Design, Manufacture and Service Only Obtainable From an ISO 9001 Registered Company and A2LA ISO/IEC Guide 25 Accredited Calibration Laboratory

Q-400/Q-500 DATALOGGING NOISE ANALYZERS

The Q-400 and Q-500 Multi-Function Noise Analyzers are extremely compact and simple-to-use making them the most versatile instruments available today. The Q-400, a Type 2 analyzer, provides all the accuracy you need for most applications, while the Q-500, a Type 1 analyzer, offers the ultimate sound measurement precision. Both models are simple to set up and even easier to operate. Menu driven instructions guide you through the set-up process quickly and clearly. Each monitor has two independently programmable channels which can be used simultaneously when taking noise measurements. It's like having two noise analyzers in one compact case. Both models allow you to calculate "C" minus "A" values automatically for hearing protection evaluation. The Q-400 and Q-500 have the capability to store up to 999 separate events in memory and allows you to print reports of logged data or download the data to your PC for further review. The Q-400/Q-500 interfaces with QuestSuite for Windows for fast and convenient data storage, retrieval, analysis, reporting and charting.



Key Benefits:

- Obtain the Benefits of The One & Only System Solution -- QuestSuite for Windows
- Evaluate Hearing Protection Requirements With Simultaneous "C" & "A" Frequency Weightings And Automated "C - A" Calculations
- Obtain The Most Accurate Dosimeter Performance Available With "Type 1" Precision Measurements (Q-500 Only)
- Easily Survey Multiple Locations with "Event" Function
- Get A Powerful Dosimeter & Integrating Sound Level Meter In One Instrument
- Quickly See & Document Test Results In The Field with Report-Ready Parallel Printer Interface
- Avoid Eye Strain With The Large, Easy-To-Read Custom Display
- Enjoy Simple, Convenient Operation Using Large, Clearly Marked Operator Controls
- Change Battery Easily With No Tools Required
- Save Time And Money Testing for Multiple Standards Simultaneously Using "Two Dosimeters In One" Feature
- Conduct More Than a Week of Full-Shift Monitoring Without a Battery Change
- Avoid Full-Shift Monitoring of Continuous or Cyclical Noise Using Automated Full-Shift Projected Dose Calculation
- Confidently Determine Compliance With Occupational Noise Standards Using Automated TWA Calculations
- View Summary Results In The Field Directly From The Instrument
- Maximize Measurement Integrity With Simple, Electronic Field Calibration
- Avoid Accidental Test Interrupts or Erasure of Data Using Keypad Security Codes
- Satisfy Multiple Measurement Applications With Selectable Frequency Weightings, Response Times, Exchange Rates, Threshold Levels, Criterion Levels and Measurement Ranges
- Experience Years of Red, Rugged & Reliable Performance From The Heavy Duty Metal Housing With Exceptional EMF/RFI Resistance
- Ensure Your Complete and Continuous Satisfaction With a Commitment to Quality Product Design, Manufacture and Service Only Obtainable From an ISO 9001 Registered Company and A2LA ISO/IEC Guide 25 Accredited Calibration Laboratory



QC-10/QC-20 SOUND LEVEL CALIBRATORS

The Quest model QC-10 and QC-20 calibrators provide quick, precise field calibration. The calibrator generates a stable acoustic signal at a controlled frequency and amplitude to verify the accuracy of your meter in the field. The model QC-10 is a general purpose calibrator that generates a constant sound pressure level of 114 dB at a fixed frequency of 1,000 Hz. The model QC-20 is recommended for use with precision ANSI and IEC Type 1 meters. User-selectable 94 or 114 dB and 250 or 1,000 Hz frequencies generate four different outputs. Both models have a standard one-inch coupler opening that may be reduced by inserting available snap-in adapters. The calibrators also provide a precise 1-volt RMS output signal via a 1/8 inch phone jack to check devices such as the Quest VI-90 Vibration Integrator.

OUTDOOR MEASUREMENT SYSTEM KIT

APPLICATIONS

- Residential/Community Noise Measurement
- Vehicular Traffic Noise Measurement
- Aircraft Noise Measurement
- Property Line Noise Measurement
- Environmental Impact Studies

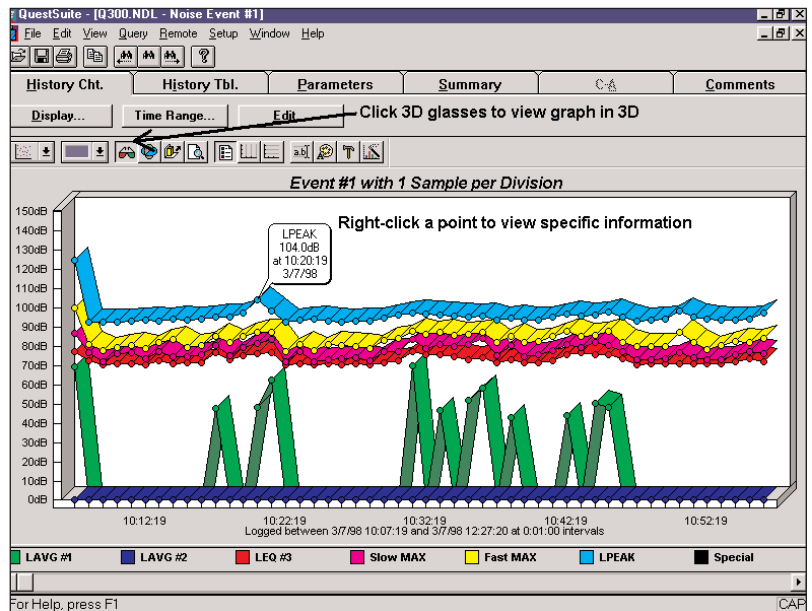
The Outdoor Measurement System Kit includes all the accessories needed to provide environmental protection to **Q-500 Noise Analyzer** and the 1900/2900, 1800/2800 Advanced Series Sound Level Meters. The weather resistant case protects the meter and battery pack and stores kit components while not in use. The case provides a stable base when in the field. An optional tripod may be used to mount the microphone 10 ft. (3 m) away from the case. The microphone is protected by a windscreen/weather shield and bird spikes. The system's battery pack increases the standard battery life of the **Q-500 Noise Analyzer** by a factor of twelve.



Data Management & Analysis Software

The Heart of "The **ONE & ONLY** System Solution"

If your monitoring applications include requirements to retain, retrieve, analyze or report data acquired by your Quest datalogging instrumentation, then *QuestSuite for Windows* is what you need. *QuestSuite* is comprised of multiple "applets" individually addressing specific safety & industrial hygiene disciplines and bringing them together into one user interface. Current applets include heat stress monitoring, noise dosimetry, sound and vibration analysis, indoor air quality assessment, toxic/combustible gas monitoring and audiometric testing. Regardless of which applet you are using, *QuestSuite* has everything you need to capture, retrieve, analyze, chart, report, archive & export logged monitoring data. All *QuestSuite* applets allow you to:



- Download data from the instrument
- Get instant access to all your important monitoring information
- Generate automated charts & reports fast & easy
- Chart data with the graph style you select, choosing the information that you want to display
- Configure test setups & program instruments with "point and click" ease
- Store instrument setup files for quick and easy reuse
- Append comments to monitoring results
- View and print text reports and charts
- Annotate charts with free-form comments
- Add comments to specific data points for future reference
- Export data to other programs
- Obtain version updates via the Internet

QuestSuite for Windows – Noise Applet

The *QuestSuite* Noise Applet supports the Q-100, Q-300 and Q-400/Q-500 Datalogging Noise Dosimeters. The Noise Applet additionally allows you to:

- Combine individual Events in one report
- Compute Projected Dose & TWA for varying workshift durations
- Perform "What If" analysis using the Edit Function without corrupting original data

PRODUCT SPECIFICATIONS

	Q-100	Q200/Q220P	Q-300	Q-400	Q-500
DATALOGGING	Yes	No	Yes	Yes	Yes
INPUT					
Microphone	8 mm field replaceable pendant mic with 36" cable	8 mm field replaceable pendant mic with 36" cable	8 mm field replaceable pendant mic with 36" cable	8 mm field replaceable pendant mic with 36" cable	1/2" precision field replaceable pendant mic with 36" cable
Measurement Range	40-110dB or 70-140dB	40-110dB or 70-140dB	40-110dB or 70-140dB	40-140dB	40-140dB
Amplitude Resolution	0.1dB	0.1dB	0.1dB	0.1dB	0.1dB
Dose Resolution	0.01%	0.01%	0.01%	0.01%	0.01%
USER PROGRAMMABLE PARAMETERS					
Filter Range	A or C Weighted	A or C Weighted	A or C Weighted	A or C Weighted A and C Weighted	A or C Weighted A and C Weighted
Response Range	Fast or Slow	Fast or Slow	Fast or Slow	Fast or Slow	Fast or Slow
Exchange Rate	3,4,5 or 6dB	3,4,5 or 6dB	3,4,5 or 6dB	3,4,5 or 6dB	3,4,5 or 6dB
Criterion Level	40-140dB	40-140dB	40-140dB	40-140dB	40-140dB
Threshold Level	40-140dB	40-140dB	40-140dB	40-140dB	40-140dB
Real-Time Clock	Yes	No	Yes	Yes	Yes
RS-232 Baud Rates	300 to 19200	----	300 to 19200	300 to 19200	300 to 19200
Time History Interval	1 sec., 10 sec. & 1 min.	----	1 min.	1 sec., 10 sec. & 1 min.	1 sec., 10 sec. & 1 min.
Time History Statistics to Save	Lavg, Lmax, Ln, Lpk, Date & Time	----	Lavg, Lmax, Lpk, Date & Time	Lavg, Lmax, Ln, Lpk, C-A, Date & Time	Lavg, Lmax, Ln, Lpk, C-A, Date & Time
Secure Mode	One (1) Level	Two (2) Levels	Two (2) Levels	One (1) Level	One (1) Level
User ID	4 Digits	4 Digits	4 Digits	4 Digits	4 Digits
Scheduled Run	Yes	No	Yes	Yes	Yes
Auto Stop Mode	Yes	Yes	Yes	Yes	Yes
STORED INFORMATION					
Lavg & TWA (overall)	Yes	Yes	Yes	Yes	Yes
Lmax & Lpk (overall)	Yes	Yes	Yes	Yes	Yes
Dose & Projected Dose (overall)	Yes	Yes	Yes	Yes	Yes
Time	Elapsed, Real, Pause & Upper Limit Time	Elapsed, Pause & Upper Limit Time	Elapsed, Real, Pause & Upper Limit Time	Elapsed, Real, Pause & Upper Limit Time	Elapsed, Real, Pause & Upper Limit Time
Calibration	Time, Date & SPL	SPL	Time, Date & SPL	Time, Date & SPL	Time, Date & SPL
SEL	Yes	Yes	Yes	Yes	Yes
Time History Data	Yes	No	Yes	Yes	Yes
Exceedance Data	Yes	No	Yes	Yes	Yes
Exposure (Pascal Squared Hours)	Yes	Yes	Yes	Yes	Yes
STORAGE CAPACITY					
Survey Data	Up to 999 Events	----	300 Events	Up to 999 Events	Up to 999Events
Time History Data	Up to 1056 Hours	----	Up to 52 Hours	Up to 1056 Hours	Up to 1056 Hours
OUTPUT					
Serial Computer/Printer Interface	RS-232	----	RS-232	RS-232	RS-232
Parallel Printer Interface	Yes	Yes (Q-220P Only)	Yes	Yes	Yes
APPLICABLE STANDARDS					
Performance	ANSI S1.25 - 1991, ANSI S1.4 - 1983: Type 2. IEC 60651 - 1979, IEC 60804 - 1985: Type 2; IEC 61252 - 1993				
Intrinsic Safety	Yes	Yes	Yes	Yes	No
Electromagnetic Conformance	CE Mark	CE Mark	CE Mark	CE Mark	CE Mark
ENVIRONMENTAL					
Operating Temperature	-10°C to +50°C (14°F to 122°F)	-10°C to +50°C (14°F to 122°F)	-10°C to +50°C (14°F to 122°F)	-10°C to +50°C (14°F to 122°F)	-10°C to +50°C (14°F to 122°F)
Storage Temperature (Battery Removed)	-20°C to +60°C -4°F to 140°F	-20°C to +60°C -4°F to 140°F	-20°C to +60°C -4°F to 140°F	-20°C to +60°C -4°F to 140°F	-20°C to +60°C -4°F to 140°F
Humidity	0 to 95% non-condensing	0 to 95% non-condensing	0 to 95% non-condensing	0 to 95% non-condensing	0 to 95% non-condensing
POWER					
Batteries	Single, 9V Alkaline	Single, 9V Alkaline	Single, 9V Alkaline	Single, 9V Alkaline	Single, 9V Alkaline
Battery Life	45 Hours	48 Hours	48 Hours	22-48 Hours	15-30 Hours
Data Retention	1 Year*	----	1 Year*	1 Year*	1 Year*
MECHANICAL					
Case Size	4.5"x2.8"x1.0" (114x71x26 mm)	5.5"x2.8"x1.4" (140x70x40 mm)	5.5"x2.8"x1.4" (140x70x40 mm)	5.5"x2.8"x1.4" (140x70x40 mm)	5.5"x2.8"x1.4" (140x70x40 mm)
Weight	11.5 oz (326 g)	15.5 oz (440 g)	15.5 oz (440 g)	15.5 oz (440 g)	15.5 oz (440 g)

*Note: Data should be retrieved immediately

Technical Services from Quest

At Quest Technologies our commitment to seeing our customers delighted is further demonstrated by the quality technical services we offer in support of our many valued customers. Quest educational seminar information and schedules along with our web-based re-certification, repair and rental services can be reviewed at www.quest-technologies.com.

Re-Certification and Repair Services

Annual re-certification of your Quest instruments ensures that your instrument continues to perform for you in accordance with original specifications. From time to time, performance may even improve as a result of product updates incorporated automatically as a part of the re-certification process. All re-certifications include calibration certificates that document traceability to appropriate standards. In the unlikely event that your instrument requires repair, Quest features guaranteed-not-to-exceed pricing for repairs. And in the event both repair and re-certification are needed, specially discounted and guaranteed-not-to-exceed pricing exists.

- Place service orders and obtain return authorizations from our website at www.quest-technologies.com
- Receive automatic 1-year renewal of the original factory warranty with your re-certification
- Enjoy the highest quality re-certification services available with our A2LA ISO/IEC Guide 25 Accredited Calibration Laboratory
- Maintain the integrity and defensibility of your monitoring program with documented traceability to appropriate standards

Rental Services

Who other than the original equipment manufacturer is better qualified to provide you with reliable, high quality instrumentation with the latest updates on a rental basis and backed by strong technical support? Quest is now pleased to support our U.S. customers' short-term instrumentation requirements with our rental services. Available products include heat stress monitors, noise dosimeters, sound level meters, vibration monitors, octave band analyzers, indoor air quality monitors and toxic/combustible gas monitors. Weekly, monthly and rent-to-own plans are available. With nationwide overnight delivery, our equipment is available when you need it. Check availability, pricing and place rental orders directly from our website at www.quest-technologies.com.

Educational Seminars

Quest Technologies conducts educational seminars throughout the world. Many of our seminars provide Continuing Education Units (CEU's) or Certification Maintenance Points for maintaining your Certified Industrial Hygienist (CIH) accreditation. Experienced professionals within the respective disciplines teach our seminars. Seminar topics include:

- Heat Stress
- Noise Measurement & Hearing Conservation
- Noise Control Measurements & Techniques
- Community Noise Measurements
- Confined Space Entry & Atmospheric Testing
- Indoor Air Quality Inspections & Testing



Quest Service Department



Quest Training Facility



1.800.245.0779

1060 Corporate Center Drive • Oconomowoc, WI 53066 USA
262.567.9157 • Fax 262.567.4047

www.quest-technologies.com

