

# AVerTV 6

---

## User Manual • English

### **DISCLAIMER**

All the screen shots in this documentation are only example images. The images may vary depending on the product and software version. Information presented in this documentation has been carefully checked for reliability; however, no responsibility is assumed for inaccuracies. The information contained in this documentation is subject to change without notice.

### **COPYRIGHT**

© 2008 by AVerMedia TECHNOLOGIES, Inc. All rights reserved. No part of this publication may be reproduced, transmitted, transcribed, stored in a retrieval system, or translated into any language in any form by any means without the written permission of AVerMedia TECHNOLOGIES, Inc.

# Table of Contents

<b>Chapter 1</b>	<b>Device Introduction.....</b>	<b>1</b>
<b>Chapter 2</b>	<b>AVerTV 6 Introduction .....</b>	<b>2</b>
<b>Chapter 3</b>	<b>Introducing the AVerTV 6 Application.....</b>	<b>3</b>
3.1	Launching the AVerTV 6 Application .....	3
3.2	Running the AVerTV 6 application for the first time.....	3
3.2.1	Scanning for Digital Programs .....	3
3.3	Introducing the User Interface .....	4
3.4	The Control Panel .....	5
3.5	Remote Control (Optional).....	7
3.5.1	Remote Control (Model 1).....	8
3.5.2	Remote Control (Model 2).....	9
3.5.3	Remote Control (Model 3).....	11
3.5.4	Remote Control (Model 4).....	13
3.5.5	Remote Control (Model 5).....	15
3.6	Changing TV Monitor Resolution .....	16
3.7	Resizing the TV Monitor Window .....	16
3.8	Changing Display Aspect Ratio.....	16
3.9	Always on Top.....	16
3.10	Setting Windows® Power Options.....	16
3.11	Setting time for turning on the Application .....	18
3.12	Minimize the Application .....	18
<b>Chapter 4</b>	<b>TV.....</b>	<b>19</b>
4.1	Digital TV.....	19
4.1.1	Scanning Channels .....	19
4.1.2	Scanning Channels (For Advanced Users).....	21
4.1.3	Customize Video Recording Settings .....	22
4.1.4	Using the EPG Function .....	24
4.1.5	Fine Tuning Color and Display Quality .....	25
4.1.6	Enabling the Subtitle Function .....	26
4.2	Adding and Deleting Channel Groups.....	26
4.3	Selecting a TV/ Digital Radio Channel .....	27

---

4.4	Adjusting Volume.....	27
4.5	Specifying a Channel Name or Description .....	27
4.6	Modifying a program list name .....	28
4.7	Removing Unwanted Channels .....	29
4.8	Using the OverScan Function.....	29
4.9	16-Channel Preview.....	30
4.10	Changing the OSD Attributes.....	31
4.11	Changing Signal Source .....	31
4.12	Sound Controlling (Optional).....	32
<b>Chapter 5</b>	<b>TimeShift.....</b>	<b>33</b>
5.1	TimeShift Controls .....	33
5.2	Customizing TimeShift Settings.....	34
5.3	Using the TimeShift Function .....	34
<b>Chapter 6</b>	<b>PVR.....</b>	<b>36</b>
6.1	PVR Controls.....	36
6.2	Recording Settings.....	36
6.3	Using the Recording Function .....	37
6.4	Playing the Recorded Programs.....	37
6.5	Picture-in-Picture Display .....	38
<b>Chapter 7</b>	<b>Image Capture .....</b>	<b>39</b>
7.1	Before Capturing .....	39
7.2	Capturing a TV/ Video Image .....	39
7.3	Multiple Image Sequence Capture.....	41
<b>Chapter 8</b>	<b>Teletext / MHEG-5.....</b>	<b>42</b>
8.1	MHEG-5 Support (UK Digital Teletext Service).....	42
8.2	Teletext.....	42
8.2.1	Customize the Display Mode.....	42
8.2.2	Overview .....	43
8.2.3	Toolbar Buttons .....	44
8.2.4	LED Lamp.....	44
8.2.5	Using Teletext .....	45
<b>Chapter 9</b>	<b>Scheduler.....</b>	<b>47</b>
9.1	Schedule Management.....	47

---

9.2	Adding Schedules .....	47
<b>Chapter 10</b>	<b>Hot Keys.....</b>	<b>50</b>
<b>Chapter 11</b>	<b>Customer Service.....</b>	<b>51</b>

# Chapter 1 Device Introduction

Thanks for purchasing AVerMedia's product. The table below lists an overview of the product you purchased. From this table, you can quickly learn about your product features and know which chapter you need to read. Please do read this table before using AVerTV 6 application.

Product Name	AVerTV Digi Volar EX
<b>Model No.</b>	A815
<b>TV System</b>	<input checked="" type="checkbox"/> Digital TV ( <input checked="" type="checkbox"/> DVB-T <input type="checkbox"/> ATSC <input type="checkbox"/> DVB-S) <input type="checkbox"/> Analog TV ( <input type="checkbox"/> NTSC <input type="checkbox"/> PAL <input type="checkbox"/> SECAM)
<b>Audio Mode</b>	<input checked="" type="checkbox"/> Stereo <input checked="" type="checkbox"/> Mono <input checked="" type="checkbox"/> SAP
<b>FM Radio</b>	<input type="checkbox"/> Support <input checked="" type="checkbox"/> Not Support
<b>Remote Control</b>	<input checked="" type="checkbox"/> Support ( <input type="checkbox"/> Model 1 <input type="checkbox"/> Model 2 <input type="checkbox"/> Model 3 <input checked="" type="checkbox"/> Model 4 <input checked="" type="checkbox"/> Model 5) <input type="checkbox"/> Not Support
<b>Others</b>	<input checked="" type="checkbox"/> Teletext <input checked="" type="checkbox"/> MHEG-5 (UK only) <input checked="" type="checkbox"/> EPG <input type="checkbox"/> iEPG (USA only) <input type="checkbox"/> Closed Caption (USA only) <input checked="" type="checkbox"/> Digital Subtitle
<b>Reference Chapter</b>	<input checked="" type="checkbox"/> Chapter 1 <input checked="" type="checkbox"/> Chapter 2 <input checked="" type="checkbox"/> Chapter 3 ( <input checked="" type="checkbox"/> 3.1 - 3.4 <input checked="" type="checkbox"/> 3.5.4 <input checked="" type="checkbox"/> 3.5.5 <input checked="" type="checkbox"/> 3.6 - 3.12) <input checked="" type="checkbox"/> Chapter 4 <input checked="" type="checkbox"/> Chapter 5 <input checked="" type="checkbox"/> Chapter 6 <input checked="" type="checkbox"/> Chapter 7 <input checked="" type="checkbox"/> Chapter 8 <input checked="" type="checkbox"/> Chapter 9 <input checked="" type="checkbox"/> Chapter 10 <input checked="" type="checkbox"/> Chapter 11
<b>Note</b>	

## Chapter 2 AVerTV 6 Introduction

Now, with this product, you can watch TV, listen to the radio, record your favorite programs and enjoy other features on your PC. Turn your computer system into a real multimedia entertainment center.

You'll never miss your favorite ball games, soaps or game shows anymore because the TimeShift function performs background recording of a TV program. This means you can return and watch from the part of the program where you left off.

To enjoy high quality TV or radio programs, *AVerMedia*<sup>®</sup> product is your best choice.

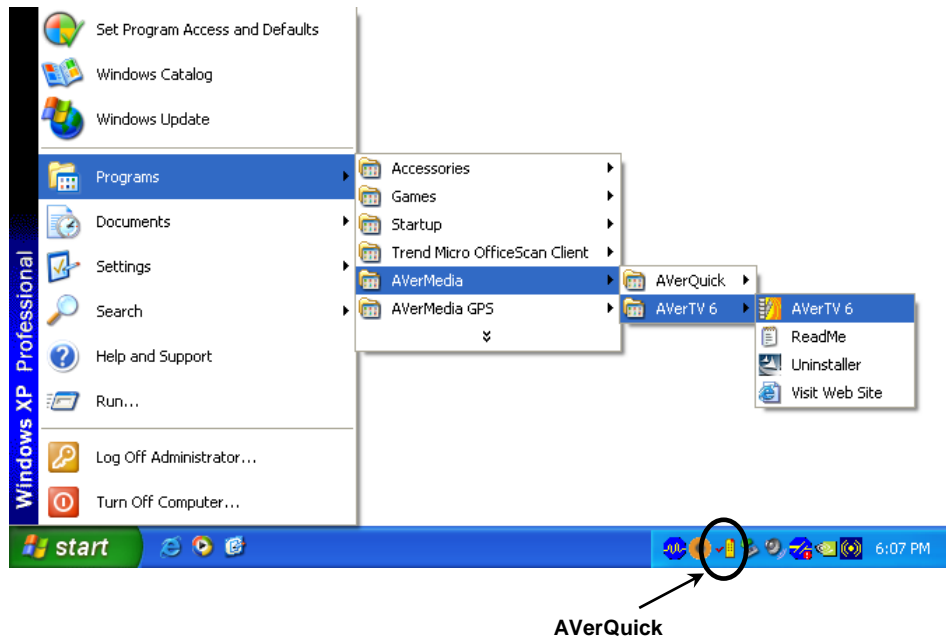
Please be noted that the functions or the remote control mentioned in this manual may vary depending on the product you purchase and the area you live.


# Chapter 3 Introducing the AVerTV 6 Application


The AVerTV 6 application allows you to watch TV, listen to the radio, record programs, and capture still images while you work on your computer.

## 3.1 Launching the AVerTV 6 Application

Run the AVerTV 6 application from the Programs menu.



To run the application, click **Start**, point to **Programs**, choose **AVerMedia**, **AVerTV 6**, and then click **AVerTV 6**. Another way is to double-click the **AVerTV 6** program icon  on the desktop. Or, you can double-click the **AVerQuick** launcher located in the lower right corner of the screen.

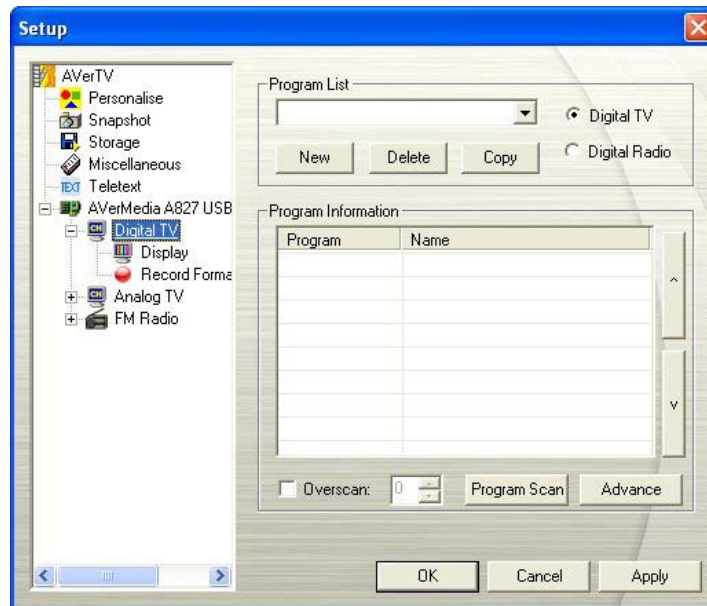
**Note:** AVerQuick allows to set the desired default application, which means you can choose either AVerTV 6 or AVer MediaCenter as the default application when double clicking AVerQuick icon . To do this, right click AVerQuick, choose “Setting”, and select the preferred application in the “Application” tab.

## 3.2 Running the AVerTV 6 application for the first time

If this is your first time running the application, the *Setup* dialog box will appear to prompt you to scan for channels. (For details, please refer to the section [Scanning Channels](#)).

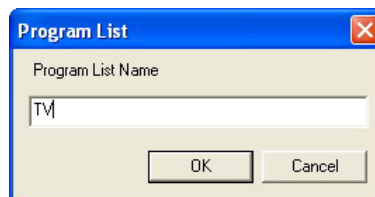
### 3.2.1 Scanning for Digital Programs

1. Select **Digital TV (or Programs)** on the left pane of the *Setup* dialog box.



(This picture is only for reference.)

2. Click **New** and the *Program List* dialog box will appear. Type in the desirable name and click **OK**.



3. Click **Program Scan** for searching for available channels/programs in your area.
4. After scanning, the active TV channels will be listed inside the box. Click **Apply** to save the scanned channels.
5. To exit the current dialog box, click **OK**.

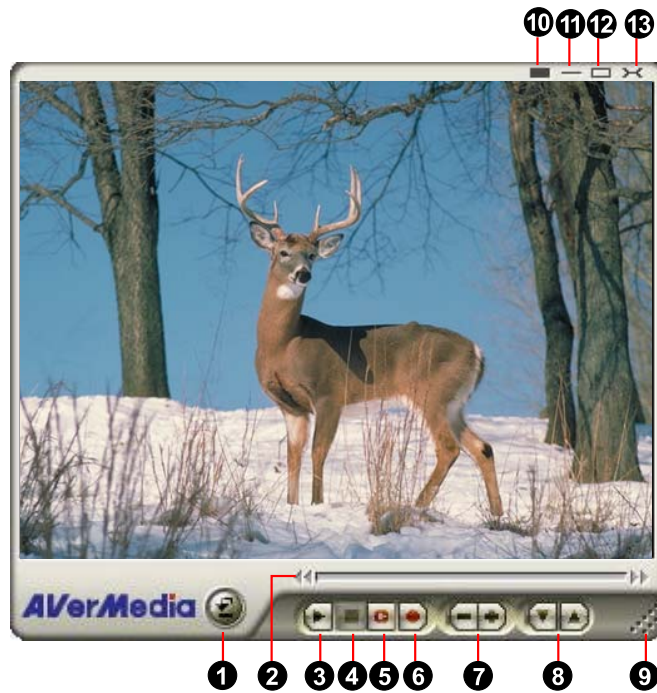
**Note:**

1. This can only supports DVB-T Radio Broadcasts, not the Digital Audio Broadcast system.
2. When scanning digital signals and if your country broadcasts logical channel data, the scanned channel will be allocated based on the assigned logical channel number.

### 3.3 Introducing the User Interface


The **TV monitor** allows you to watch live TV or video.



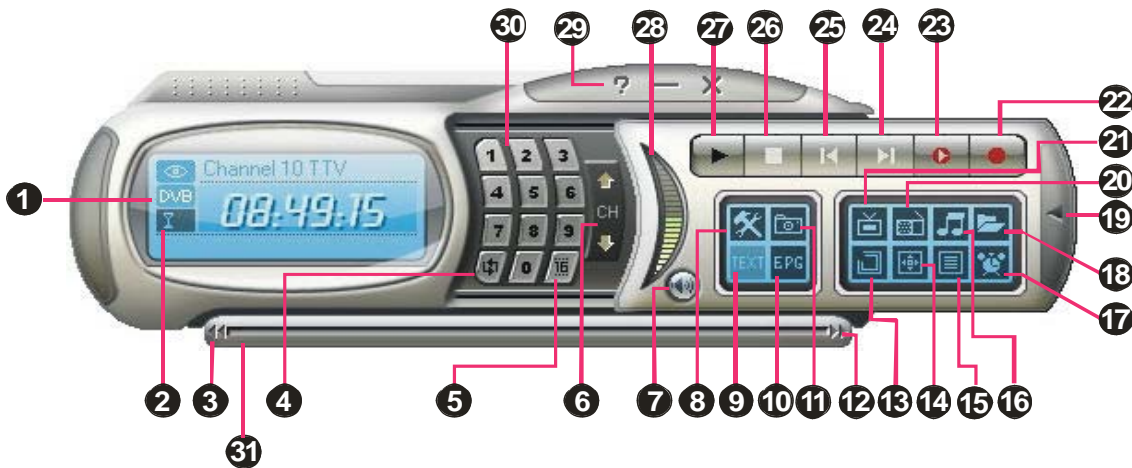


1	Panel On / Off	8	Channel Up/Down
2	Playback Seek Slider	9	Resize Window
3	Play / Pause	10	Show / Hide Video Frame
4	Stop	11	Minimize
5	TimeShift	12	Full Screen
6	Record	13	Exit
7	Volume		

The **Control Panel** provides button controls for selecting channels, adjusting volume, capturing images, and more. It has a panel display that shows the current channel number and channel name.

To display or hide the **Control Panel**, click the button  located in the lower left corner of the TV Monitor.

### 3.4 The Control Panel



(This picture is only for reference.)

The table below describes functions of the buttons on the Control Panel.


BUTTON	FUNCTION
1 Signal Status / Enable or disable Repeat Play	TV/Radio mode: Display the current signal status. Playback mode: Right click and enable the Repeat function. The system will continuously playback the files in the playlist.
2 Signal Strength	Display signal strength.
3 Backward	Move backwards in intervals.
4 Channel Loop	Return to previously accessed channel.
5 16-Channel Preview	Display 16 consecutive TV channels on the TV Monitor window.
6 Channel Up/ Down	Go to the next upper or lower active channel.
7 Mute	Turn off the sound.
8 Setup	Allows you to: * Scan channels. * Set the Windows power options. * Configure snapshot settings. * Customize recording settings. * Customize the TimeShift function.
9 Teletext	View Teletext/MHEG-5/Closed Caption information
10 EPG	View EPG information.
11 Snapshot	Capture a single image or a sequence of images.
12 Forward	Skip forward in intervals.
13 Always on Top	Make the TV monitor float over the top of other program windows.
14 Full Screen	Show TV/Video programs in full screen.
15 Program List	Display the program list.
16 Audio Mode	Switch between available audio modes.
17 Schedule	Display Schedule dialog box.
18 Play List	Create a playlist of video files to playback.
19 Show/ Hide Numeric Panel	Toggle between displaying or hiding the Numeric Panel.

20	Radio Source	Switch to radio mode. (FM or Digital Radio)
21	Change Video Source	Switch between available video sources.
22	Record	Record the current program.
23	TimeShift / Pause	Performs background recording of the live program. This function lets you view the recorded parts, while at the same time, recording is in progress. / Freeze the TimeShift temporarily.
24	Next File	Play the next file in the playlist.
25	Previous File	Play the previous file in the playlist.
26	Stop	Stop the playback, recording, TimeShift, etc.
27	Play / Pause	Play back recorded video files. / Freeze the playback temporarily.
28	Volume Control	Drag your mouse up/down to increase/decrease the volume level.
29	Help	View User's Manual.
30	Numeric Buttons	Select channels/programs.
31	Playback Seek	Drag the slider tab to move to any part of the recorded TV program.

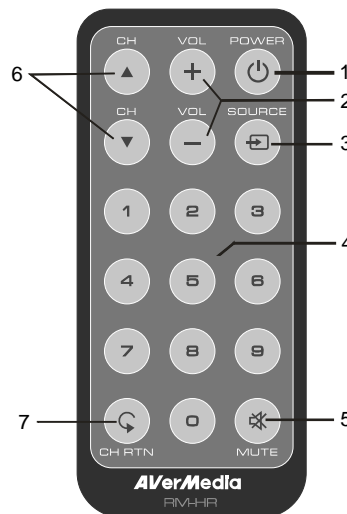
### 3.5 Remote Control (Optional)

After installing drivers and applications, you can use remote control to turn on/off the programs, select channels, adjust volume and so on.

(The remote control can only be used on AVerMedia AVerTV 6 application.)

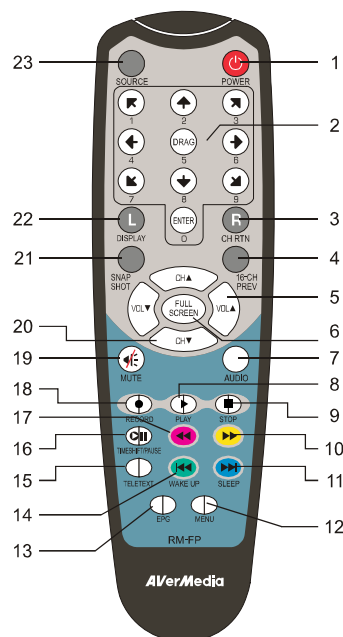
**Note:** To control two or more than two cards/devices with a remote control, it is recommended to enable the multiple infrared receiver function first. To do this, right click AVerQuick icon  at the lower right corner of the screen, choose “Setting”, “Remote control” tab and select check boxes next to the device name. Please check your supported remote control model before activating this function.

### 3.5.1 Remote Control (Model 1)



Button	Description
1. POWER	Turn on/off the application
2. VOL +/-	Volume up/down.
3. SOURCE	Switch between available signal sources.
4. Numeric Buttons	Select a TV channel.
5. MUTE	Turn on/off the sound.
6. CH ▲/▼	Go up or down to the next active channel.
7. CH RTN	Go to the previously selected channel.

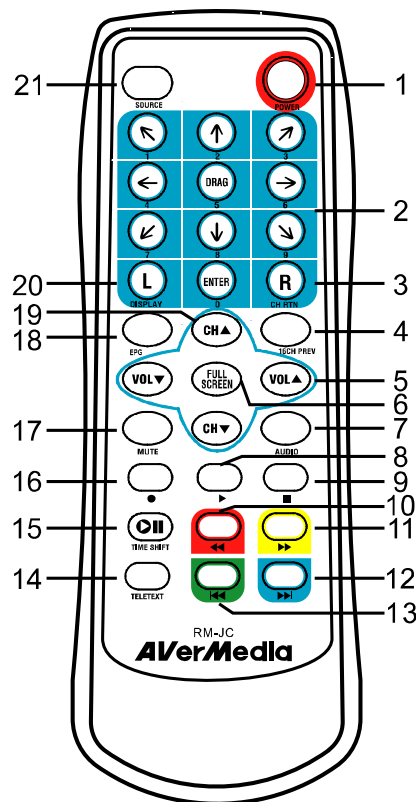
### 3.5.2 Remote Control (Model 2)



Button	Description
1. POWER	Turn on/off the application
2. Numeric Buttons	- Select a TV channel. - Under the 16-Channel preview mode, use $\uparrow\downarrow\leftarrow\rightarrow$ to highlight the intended channel.
3. CH RTN	Go to the previously selected channel.
4. 16-CH PREV	16-Channel Preview.
5. VOL $\blacktriangle/\blacktriangledown$	Volume up/down.
6. FULL SCREEN	Display TV in full screen.
7. AUDIO	Switch between available audio modes.
8. $\blacktriangleright$ (Play)	Play the last recorded or played file.
9. $\blacksquare$ (Stop)	- End the Playback or recording. - End the TimeShift mode and return to real-time TV or Radio mode.
10. $\blacktriangleright\blacktriangleright$ (Forward)	- Advance the playback. - Jump to the Teletext page of the corresponding color according to this button.
11. SLEEP $\blacktriangleright\blacktriangleright$	- Go to the next file in the playlist. - Set the time to put your computer in Stand By or Hibernate mode. - Jump to the Teletext page of the corresponding color according to this button.
12. MENU	Display or hide the <b>Control Panel</b> .
13. EPG	Launch the Electronic Programme Guide.
14. WAKE UP $\blacktriangleleft\blacktriangleleft$	- Go to the previous file in the playlist. - Set the time to bring your computer out of Stand By or Hibernate mode. - Jump to the Teletext page of the corresponding color according to this button.
15. TELETEXT	View Teletext/MHEG-5/ Closed Caption information.
16. TIMESHIFT /PAUSE	- Freeze the playback. - Switch from real-time TV or Radio to TimeShift mode.
17. $\blacktriangleleft\blacktriangleleft$ (Rewind)	- Rewind the playback. - Jump to the Teletext page of the corresponding color according to this button.

18. ● (Record)	Switch to DVR mode and record the current program or video into your hard drive.
19. MUTE	Turn on/off the sound.
20. CH ▲/▼	Go up or down to the next active channel.
21. SNAPSHOT	Capture the on-screen image to a bitmap file.
22. DISPLAY	Display information.
23. SOURCE	Switch between available signal sources.

### 3.5.3 Remote Control (Model 3)



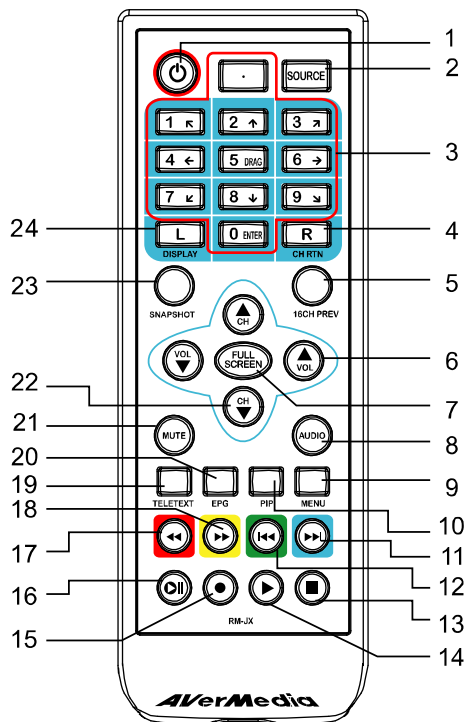
Button	Description
1. POWER	Turn on/off the application
2. Numeric Buttons	- Select a TV channel. - Under the 16-Channel preview mode, use ↑ ↓ ← → to highlight the intended channel.
3. CH RTN	Go to the previously selected channel.
4. 16-CH PREV	16-Channel Preview.
5. VOL ▲/▼	Volume up/down.
6. FULL SCREEN	Display TV in full screen.
7. AUDIO	Switch between available audio modes.
8. ▶ (Play)	Play the last recorded or played file.
9. ■ (Stop)	- End the Playback or recording. - End the TimeShift mode and return to real-time TV or Radio mode.
10. ◀◀ (Rewind)	- Rewind the playback. - Jump to the Teletext page of the corresponding color according to this button.
11. ▶▶ (Forward)	- Advance the playback. - Jump to the Teletext page of the corresponding color according to this button.
12. ▶▶ (Next File)	- Go to the next file in the playlist. - Jump to the Teletext page of the corresponding color according to this button.
13. ◀◀ (Previous File)	- Go to the previous file in the playlist. - Jump to the Teletext page of the corresponding color according to this button.
14. TELETEXT	View Teletext/MHEG-5/ Closed Caption information.
15. TIMESHIFT	- Freeze the playback. - Switch from real-time TV or Radio to TimeShift mode.
16. ● (Record)	Switch to DVR mode and record the current program or video into your hard drive.

---

17. MUTE	Turn on/off the sound.
18. EPG	Launch the Electronic Program Guide.
19. CH ▲/▼	Go up or down to the next active channel.
20. DISPLAY	Display information.
21. SOURCE	Switch between available signal sources.



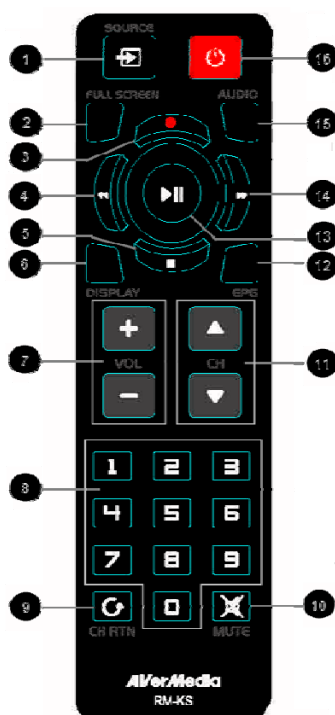
### 3.5.4 Remote Control (Model 4)



Button	Description
1. POWER	Turn on/off the application
2. SOURCE	Switch between available signal sources.
3. Numeric Buttons	- Select a TV channel. - Under the 16-Channel preview mode, use $\uparrow\downarrow\leftarrow\rightarrow$ to highlight the intended channel.
4. CH RTN	Go to the previously selected channel.
5. 16-CH PREV	16-Channel Preview.
6. VOL $\blacktriangle/\blacktriangledown$	Volume up/down.
7. FULL SCREEN	Display TV in full screen.
8. AUDIO	Switch between available audio modes.
9. MENU	Display or hide the <b>Control Panel</b> .
10. PIP	Display or hide the PIP window.
11. SLEEP $\blacktriangleright\blacktriangleright$	- Go to the next file in the playlist. - Set the time to put your computer in Stand By or Hibernate mode. - Jump to the Teletext page of the corresponding color according to this button.
12. WAKE UP $\blacktriangleleft\blacktriangleleft$	- Go to the previous file in the playlist. - Set the time to bring your computer out of Stand By or Hibernate mode. - Jump to the Teletext page of the corresponding color according to this button.
13. $\blacksquare$ (Stop)	- End the Playback or recording. - End the TimeShift mode and return to real-time TV or Radio mode.
14. $\blacktriangleright$ (Play)	Play the last recorded or played file.
15. $\bullet$ (Record)	Switch to DVR mode and record the current program or video into your hard drive.
16. TIMESHIFT / PAUSE	- Freeze the playback. - Switch from real-time TV or Radio to TimeShift mode.
17. $\blacktriangleright\blacktriangleright$ (Forward)	- Advance the playback. - Jump to the Teletext page of the corresponding color according to this button.
18. $\blacktriangleleft\blacktriangleleft$ (Rewind)	- Rewind the playback. - Jump to the Teletext page of the corresponding color according to this button.
19. TELETEXT	View Teletext/MHEG-5/ Closed Caption information.

20.EPG	Launch the Electronic Program Guide.
21.MUTE	Turn on/off the sound.
22.CH ▲/▼	Go up or down to the next active channel.
23.SNAPSHOT	Capture the on-screen image to a bitmap file.
24.DISPLAY	Display information.

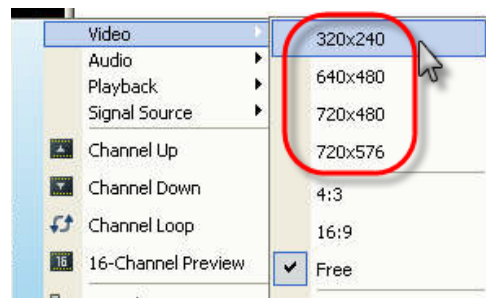
### 3.5.5 Remote Control (Model 5)



Button	Description
1. SOURCE	Switch between available signal sources.
2. FULL SCREEN	Display TV in full screen.
3. ● (Record)	Switch to PVR mode and record the current program or video into your hard drive.
4. ◀◀ (Rewind)	Rewind the playback.
5. ■ (Stop)	- End the Playback or recording. - End the TimeShift mode and return to real-time TV or Radio mode.
6. DISPLAY	Display information.
7. VOL +/–	Volume up/down.
8. Numeric Buttons	- Select a TV channel. - Under the 16-Channel preview mode, use 2 4 6 8 to highlight the intended channel.
9. CH RTN	Go to the previously selected channel.
10. MUTE	Turn on/off the sound.
11. CH ▲/▼	Go up or down to the next active channel.
12. EPG	Launch the Electronic Program Guide. (DVB-T only)
13. ▶ (Play)	Play the last recorded or played file.
14. ▶▶ (Forward)	Advance the playback.
15. AUDIO	Switch between available audio modes.
16. POWER	Turn on/off the application


### 3.6 Changing TV Monitor Resolution

To switch the resolution of the TV monitor, simply right click on the TV monitor. When a pop-up menu appears, point to **Video** and choose an appropriate resolution (320x240, 640x480, 720x480, 720x576).



### 3.7 Resizing the TV Monitor Window

To enlarge or reduce the size of the TV Monitor window, click and drag the lower right edge of the window.

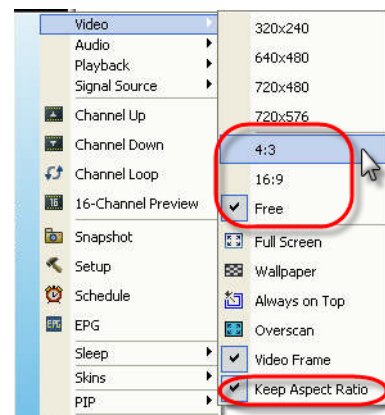
Double-click the TV Monitor window to display it in full screen or click the Full Screen button  on the Control Panel.

When in full screen mode, just double-click anywhere on the screen to revert to the normal TV window size.

### 3.8 Changing Display Aspect Ratio

Aspect ratio indicates the ratio of the width of an image to its height. To switch the aspect ratio of the display, Right click on the TV monitor. When a pop-up menu appears, point to **Video** and choose a desired option.

4:3 and 16:9 is the two most common aspect ratio of home video. You can choose **Free** to adjust the aspect ratio as you want. Or select **Keep Aspect Ratio** to preserve the original width and height of an image.



### 3.9 Always on Top

To make the TV monitor window float over the top of other program windows, right-click on the TV monitor. In the pop-up menu, point to Video and choose Always on Top.

OR,

Click the **Always on Top** button  on the Control Panel.

### 3.10 Setting Windows® Power Options


This option allows you to put your computer in Stand By / Hibernate mode, power off, exit the application or log off from the computer while you are away from the computer.

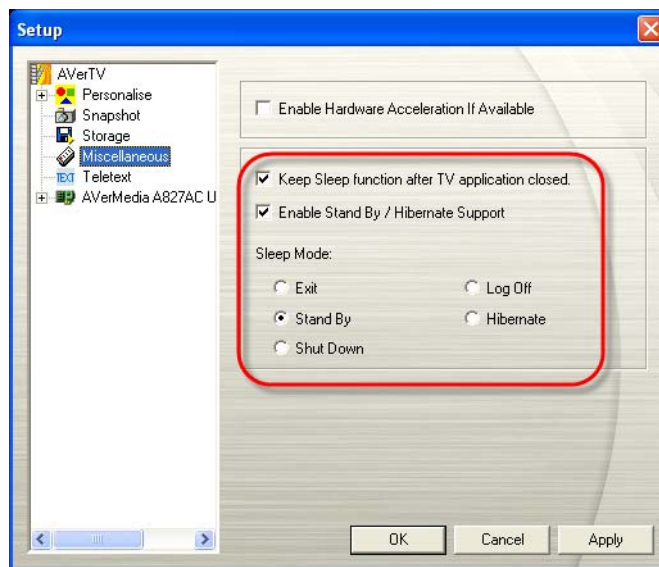
**Note:**

**Stand By:** Stand By is a state in which your monitor and hard disks turn off, so that your computer uses less power.

**Hibernate:** Hibernation is a state in which your computer shuts down to save power but first saves everything in the memory on your hard disk.

Please do the following:

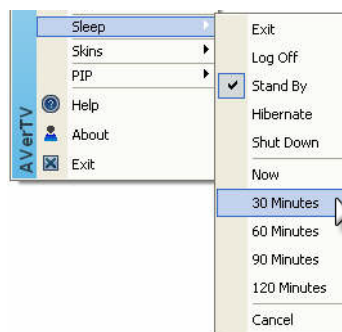
1. First, Click the **Setup** button  and in the *Setup* dialog box, click on the **Miscellaneous** icon on the left pane.
2. By default, the system is set to enable the *Stand By/Hibernation* option. What you have to do is to choose the desired power-saving settings. If your computer has problem with being out of Stand By or Hibernate mode, please clear the *Stand By/Hibernate* option.



(This picture is only for reference.)

There are two ways to set the time to put the computer into Stand By or Hibernation.

- ◆ If the product you purchase with a remote control, you can press the **Sleep** button repeatedly on the remote control.
- ◆ Or you can right click on the TV monitor, point to Sleep and select the desired mode. Then right click on the TV monitor again, point to Sleep and choose an execution time. The time setting will be displayed on the TV monitor. For details, please see the description below.



Time setting mode	Description
Now	Your computer will go into the selected mode in about 10 seconds.
Sleep 30/60/90/120 Minute(s)	Your computer will go into the selected mode in 30/60/90/120 minutes.
Cancel	Your computer will return to original settings.


### 3.11 Setting time for turning on the Application

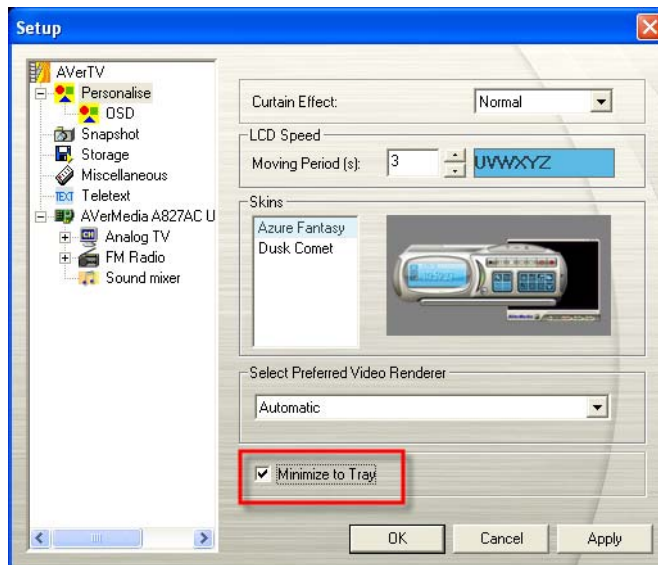
If your product with a remote control, this function allows you to turn on the application at a preset time.

1. Press the **Wake Up** button (the green one) on the remote control.
2. A dialog box will be displayed on the center of the screen.
3. Set the time you want by pressing the **Wake Up** button continuously. (For more information, please refer to the table below.) Then the application will be turned on automatically at the time you want.

	Description
Cancel Wake Up	Disable the <b>Wake Up</b> function.
Wake Up after 30/60/90/120 min(s)	The application will be turned on in 30/60/90/120 minutes.

### 3.12 Minimize the Application

To minimize AVerTV 6 application to the system tray (notification area), click the Setup button  and in the Setup dialog box, click **Personalise** icon on the left pane. Then Select the Minimize to Tray check box. Otherwise clear the check box to minimize the application to a taskbar button.




(This picture is only for reference.)

# Chapter 4 TV

## 4.1 Digital TV

### 4.1.1 Scanning Channels

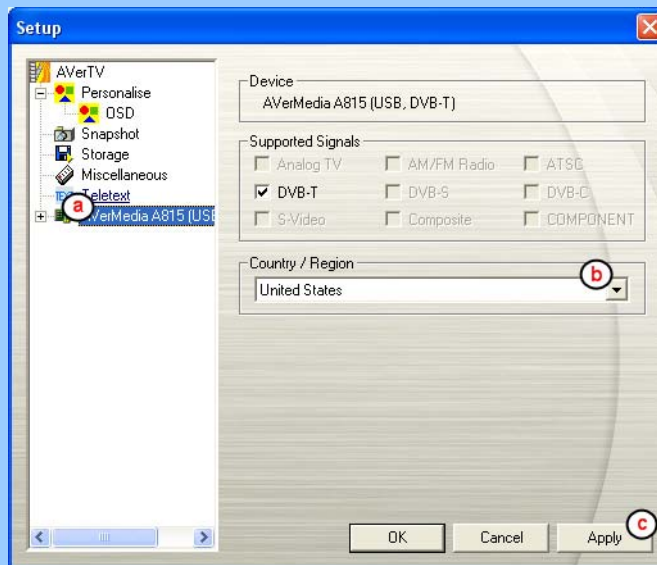
If you haven't done channel scanning when you first run the application, please follow the steps to complete this procedure.

1. Click the **Setup** button  and in the *Setup* dialog box, select an available Avermedia device in the left pane.

**Note:**

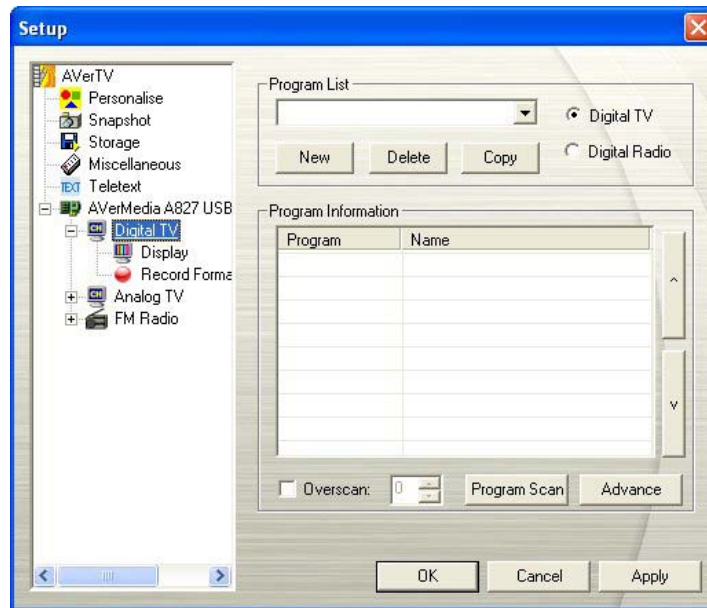
Make sure that your Country/Region is correct.

- a. First, select an available AVermedia device in the left pane.
- b. From the Region/Country drop-down list, select your country or region.
- c. Click **Apply** to save the settings.



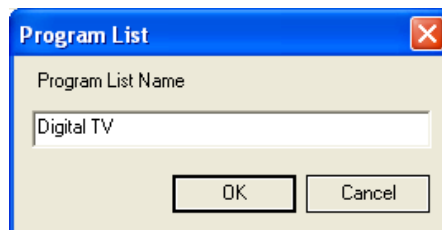
(This picture is only for reference.)

2. Then select **Digital TV (or Programs)**.



(This picture is only for reference.)

3. Click **New** and the *Program List* dialog box will appear. Type in the desirable name and click **OK**.

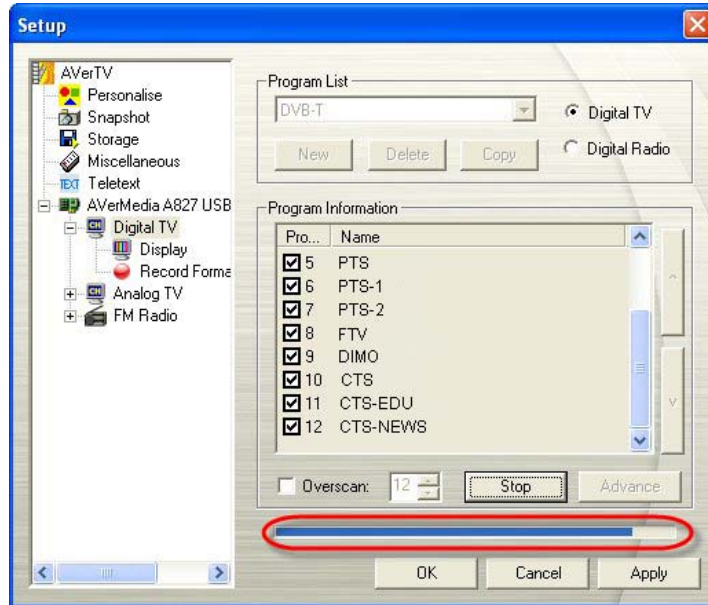


4. Then click **Program Scan** to start the searching process.

The application comes with a default frequency table therefore the application will use this table to search for active channels/programs. If you want to terminate the searching process, just click **Stop**.

5. You can check the scanning progress from the progress bar. After scanning, the active TV/Radio channels will be listed inside the box. Click **Apply** to save the scanned channels.



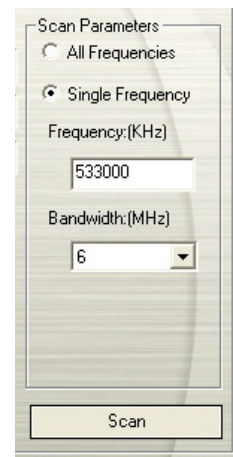


(This picture is only for reference.)

**Note:** All programs automatically classify into two categories (Digital TV and Digital Radio). Select Digital TV to display TV programs; select Digital Radio to display radio programs.

#### 4.1.2 Scanning Channels (For Advanced Users)


1. Click **Advance** located in the lower right corner of the **Program Information** section. Then the *Advance Program Configuration* dialog box will appear.
2. When there are channels missing from the channel memory, select **All Frequencies** or **Single Frequency**.
3. Once you select **Single Frequency**, you need to specify the correct **Frequency**, for example 533000 (KHz), and **Bandwidth**.
4. Then click **Scan**.
5. After scanning, new active channels/programs will be memorized and listed in the left pane of the dialog box.
6. Click **Apply** to save the scanned channels.

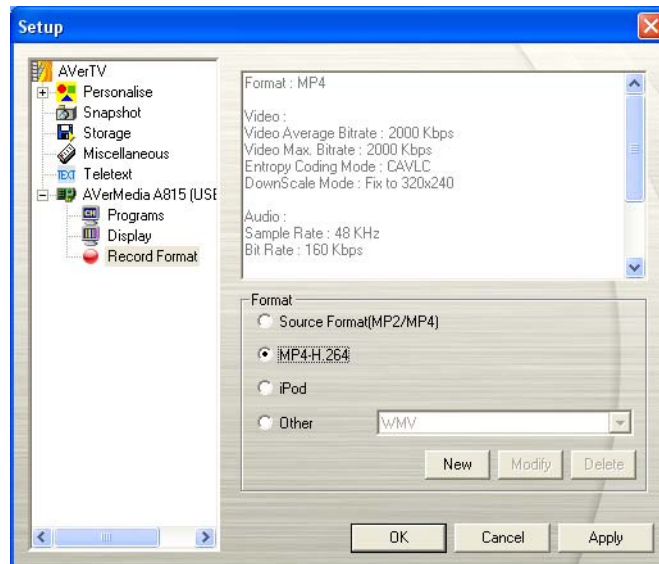


**Note:** All Frequencies Scanning may take you a while. Please be patient.

### 4.1.3 Customize Video Recording Settings

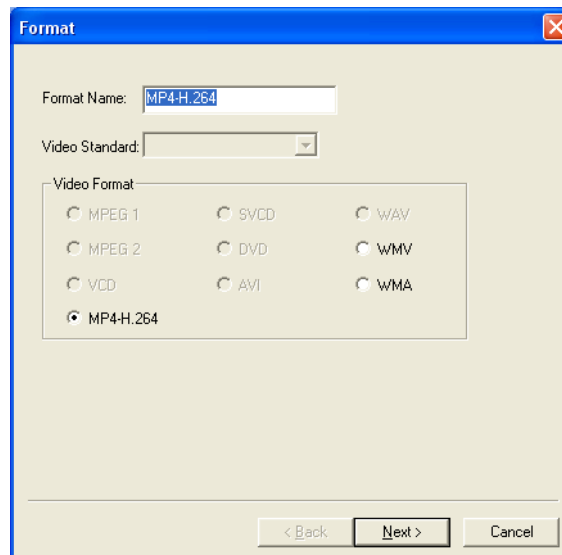
To customize the video recording settings, please do the following.

1. Click the **Setup** button  and in the *Setup* dialog box, click the **Digital TV (or Programs)** icon on the left pane.
2. Select the **Record Format** option.
3. Select recording type. You can use the default format or select **New** to create your own file format. Or you can choose *Audio Only* for sound recording.

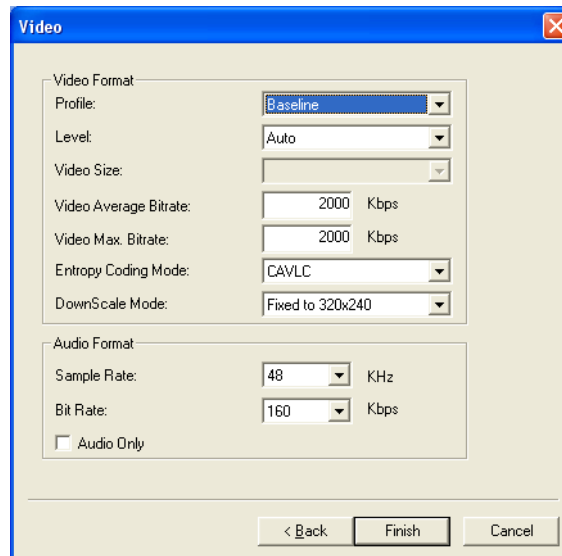


(This picture is only for reference.)

4. Click **New** and the *Format* dialog box appears. In the *Format dialog box*, select the file format you want and enter the desired name in the text box. Then click **Next**.



5. In the *Video* dialog box, you can set the video format and audio format. The setting options in the *Video* dialog box will vary according to the video format you chose.




6. Click **Finish** to save the settings. To abort this operation, click **Cancel**.
7. If you want to change the settings of your own file format, click **Modify** or you can click **Delete** to remove the unwanted file format that you created earlier.

**Information:**

File Format	Description
<b>Source Format (MP2/MP4)</b>	Record the signal according to the source format, MP2 or MP4.  MPEG-2:  Videos compressed using MPEG-2 have extremely high quality pictures and full CD-quality sound. Choose MPEG-2 format for video files that are intended for DVD-ROM playback on a computer or if you want broadcast quality videos.  MPEG-4:  Videos compressed using MPEG-4 standard are two or three times more efficient than MPEG-2. This format can be applied to a wide variety of applications or networks and systems like HD-DVD, Digital TV, Broadcast and Streaming applications.
<b>MP4-H.264</b>	MP4-H.264 is a much more effectively compression techniques in the MPEG-4 standard. It delivers excellent video quality across the entire bandwidth.
<b>Audio Only</b>	Compress audio in MPEG-2 standard.
<b>iPod</b>	A video format base on H.264 standard but has smaller video bit rate. It's an iPod -compatible format.
<b>WAV</b>	A common audio file format for Windows computers. It was created by Microsoft and has become a standard PC audio file format.
<b>WMV</b>	WMV is a video format encoded with Microsoft ISO MPEG-4 video codec and Windows Media Audio codec. It can be used to provide downloadable or streaming video.

**Note:** To determine the length of recording and to choose a destination folder in which to save the recorded audio, please refer to the section titled Recording Settings in Chapter 6.

### 4.1.4 Using the EPG Function



Electronic Program Guide (EPG) is a service that allows you to check the next succeeding program schedule and even the program schedules of the whole week. If the EPG service is provided in your region/country, simply click the **EPG** button  to open the *EPG* window.


First, select the desired program from the *Program* drop-down list and the *EPG* window will display the schedule for one week. You can also see the related information such as program name, time, and description about the program on the right pane of the window.

In addition, when switching channels, the TV screen can show the current and succeeding program information.



	Description
1	The current program
2	The program will be recorded on the preset time.


Our *EPG* window also allows you to preset a schedule for watching or recording programs. Just select your favorite programs and click Record button  or the Active TV Application button . And the system will execute your command on schedule.

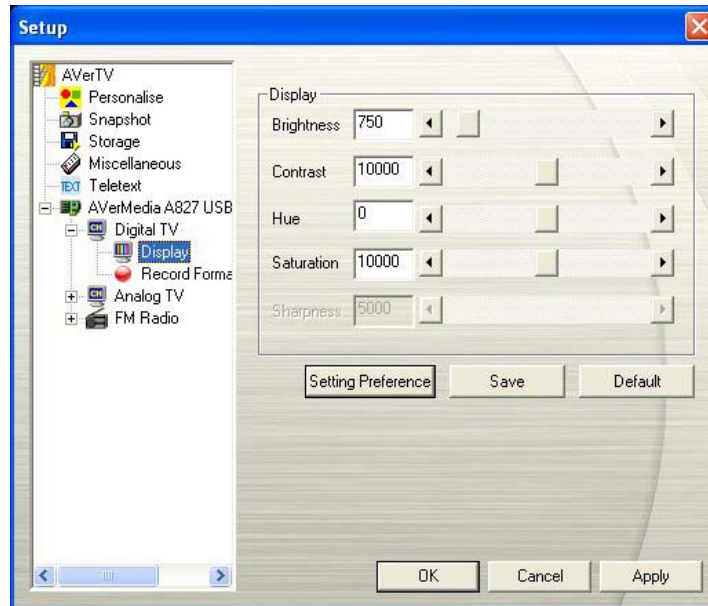
If you want to download the latest program schedule, please click the **Update** button .

Click  to sort the EPG list by time or by channel

### 4.1.5 Fine Tuning Color and Display Quality

If the color or picture quality of the TV display needs to be adjusted, please do the following.

1. Click the **Setup** button  and in the *Setup* dialog box, click **Digital TV (or Programs)** icon on the left pane.
2. Select the **Display** option.



(This picture is only for reference.)

3. Then you can adjust the **Brightness, Contrast, Hue and Saturation** sliders until you get an accurate color.

Click **Save** to create your own settings. Next time, you can simply click **Setting Preference** to get your preferred settings.

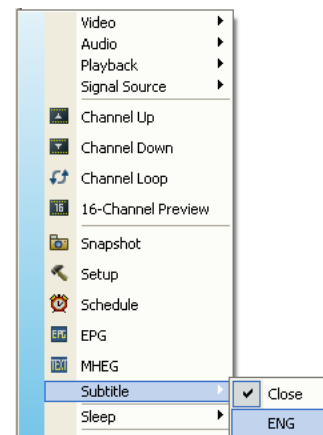
4. If you want to revert to default settings, please click Default.

### 4.1.6 Enabling the Subtitle Function

If your local broadcasters provide a subtitle service, you can view them by doing the followings:

Right click the TV screen, point to Subtitle and choose the desired language.


To hide the subtitles, please right click the TV screen, point to Subtitle and choose Close.

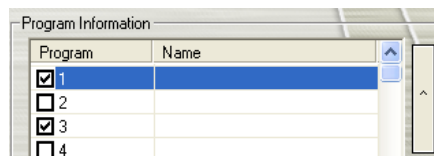
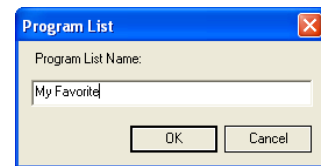


## 4.2 Adding and Deleting Channel Groups

Selecting a Channel Group allows you to switch between the channels of the selected group only when pressing the **Channel Up/Down** button. If you want to add or delete a channel group, do the following:

To add a new channel group:

1. Click the **Setup** button  and in the *Setup* dialog box, click **Analog TV (or Programs)** or **Digital TV (or Programs)** icon on the left pane.
2. Click **New** and the *Program List* dialog box will then appear (as shown on the right).
3. Type in a group name and click **OK**.
4. Click **Program Scan** and click **Yes** to continue the scanning process.
5. Available channels will then be listed in the *Program Information* and now you can delete the unwanted programs by clearing the check box.

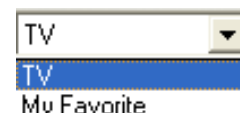


6. Click **Apply** to save the settings and click **OK** to exit the current dialog box. Or you can click **Cancel** to revert to the original settings.


OR,

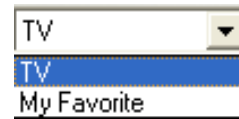
If you don't want to scan programs every time you create a new channel group, you can use the **Copy** function.

1. From the program drop-down list, select the group that you want to duplicate.
2. Click **Copy** and the *Program List* dialog box will appear.
3. Type in desired name and click **OK**.
4. Finally, just like the steps described above, clear the check mark next to the unwanted channels.





To delete a channel group:


1. Click the **Setup** button  and in the *Setup* dialog box, click **Analog TV (or Programs)** or **Digital TV (or Programs)** icon on the left pane.
2. From the program drop-down list, select the name of the group that you want to remove.
3. Click **Delete** to remove the selected group.



### 4.3 Selecting a TV/ Digital Radio Channel


There are three ways of switching between TV/Radio channels:

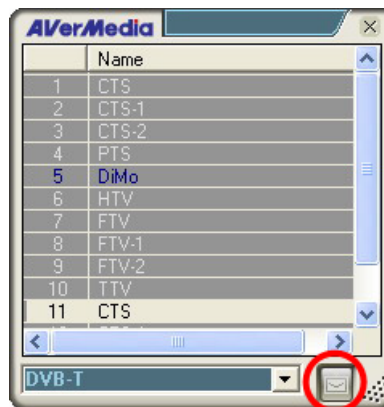
- ◆ Click the **Channel Up/Down** buttons (  on the TV monitor window or  on the Control Panel) repeatedly until reaching your desired channel.

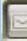
- ◆ Click  to open the *Numeric Panel* (as shown on the right). Then click on the **Numeric buttons** to get your desired channel number.



OR,

- ◆ Click the **Program List** button . When the Program Panel appears, first choose the desired group from the drop-down list and then double-click on the desired channel.



**Note:** Locked channels (eg. Adult channel) are in red text. If you select the Filter button  located on the bottom right corner of the program panel, the system will hide all the pay channels in the program list.(Filter function is only available for digital TV.)


### 4.4 Adjusting Volume



On the Control Panel, click and drag your mouse over the **Volume** meter to increase or decrease the volume level. You can also press the + / – keys on the numeric keypad to adjust the volume.

### 4.5 Specifying a Channel Name or Description


To assign a channel name or specify a description:

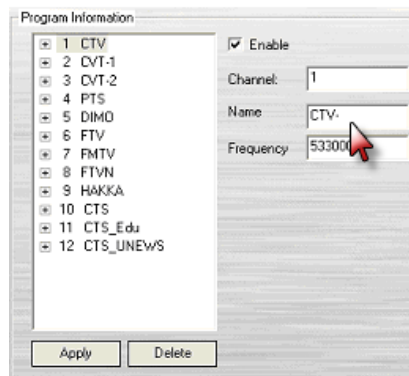
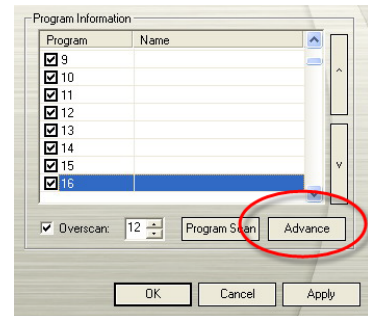
1. Click the **Setup** button  and in the *Setup* dialog box, click **Analog TV (or Programs)** or **Digital TV (or Programs)** icon on the left pane.

- Under the *Name* column, double-click the text box of the channel you want to assign a name or description.
- Type in the channel name or description, then press **Enter**.

Program	Name
<input checked="" type="checkbox"/> 1	CTS
<input checked="" type="checkbox"/> 2	CTS_Edu
<input checked="" type="checkbox"/> 3	CTS_UNEWS


OR,

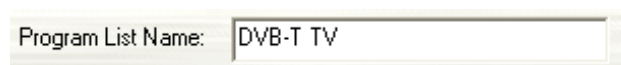
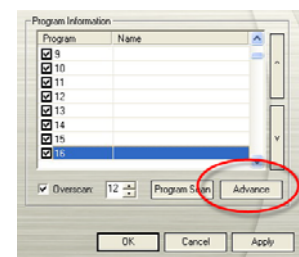
- Click the **Setup** button  and in the *Setup* dialog box, click **Analog TV (or Programs)** or **Digital TV (or Programs)** icon on the left pane.
- Click **Advance** located in the lower right corner in the *Program Information* section. Then the *Advance Program Configuration* dialog box will appear.
- In the dialog box, select the channel/program you want to assign a name or description.
- In the *Name* text box, type in the desired name or description. Press **Apply** to save the settings and click **OK** to exit the dialog box. Or you can press **Cancel** to abort without saving.



## 4.6 Modifying a program list name

Surely, you can change a program list name. To rename a program list, follow the steps described below:

- Click the **Setup** button  and in the *Setup* dialog box, click **Analog TV (or Programs)** or **Digital TV (or Programs)** icon on the left pane.
- Click **Advance** located in the lower right corner of the *Program Information* section. Then the *Advance* dialog box will appear.
- Type the desired name in the *Program List Name* text box.




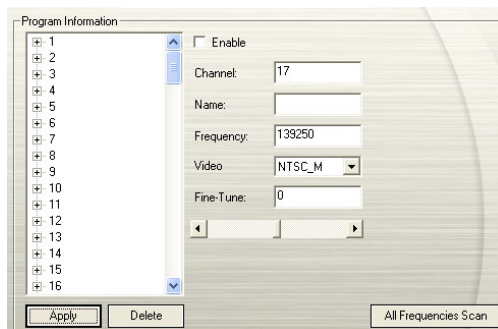
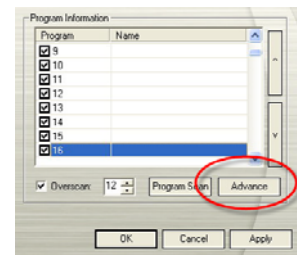
- Press **Apply** to save the setting and click **OK** to exit the dialog box. Or press **Cancel** to abort the saving.



## 4.7 Removing Unwanted Channels

If you want to exclude undesirable channels from your channel list, do the following:

1. Click the **Setup** button  and in the *Setup* dialog box, click **Analog TV (or Programs)** or **Digital TV (or Programs)** icon on the left pane.
2. Click **Advance** located in the lower right corner of the *Program Information* section. Then the *Advance* dialog box will appear.
3. In the *Program Information* section, select the unwanted channel and then click **Delete**. This channel will be removed and that means you won't be able to access these programs anymore.



OR,

If you just want to skip a certain channel, do the following:

1. First, select the unwanted channel in the **Program Information** section.
2. Clear the *Enable* check box so that you will not access that channel when you press **Channel Up/Down** buttons.  Enable
3. However, you can still see the channel in your program list. If you want to watch that channel again at some point, just select the *Enable* check box.


## 4.8 Using the OverScan Function

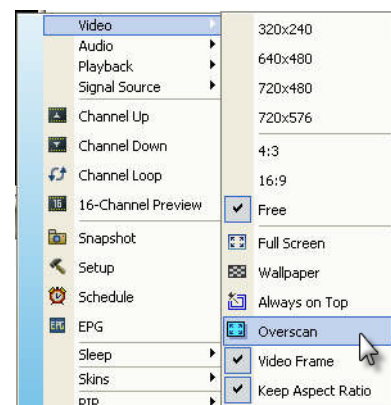
On some broadcast channels, you might see distorted lines or black spaces on the top, sides, or bottom of the screen. These video artifacts device from the source signal, and can be masked using the **OverScan** feature.

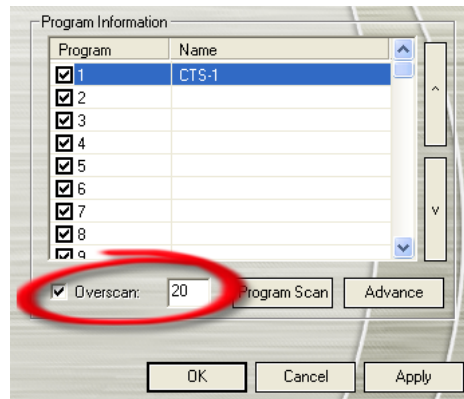
To hide the edges of the picture:

- Right-click on the TV Monitor and choose **OverScan** to have it enable it.

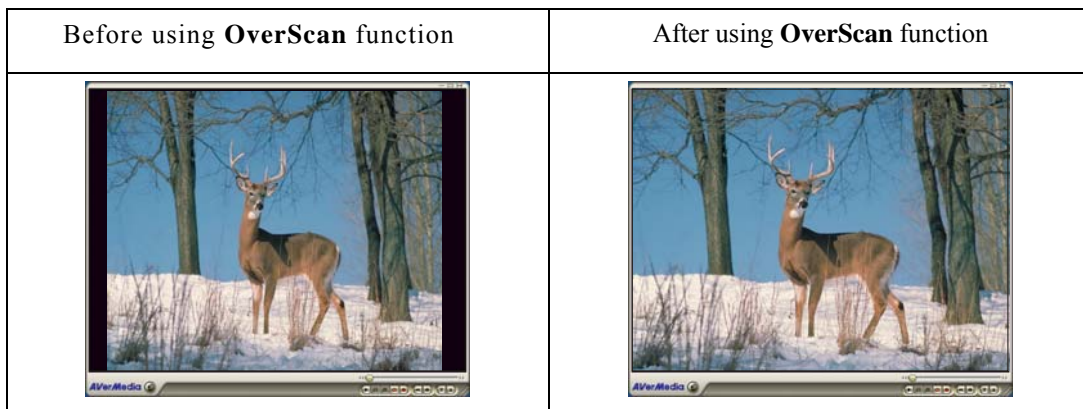
OR,

- Click the **Setup** button  and in the *Setup* dialog box, click **Analog TV (or Programs)** or **Digital TV (or Programs)** icon on the left pane. Enable **OverScan** and specify an appropriate number (0~20) to get better quality.

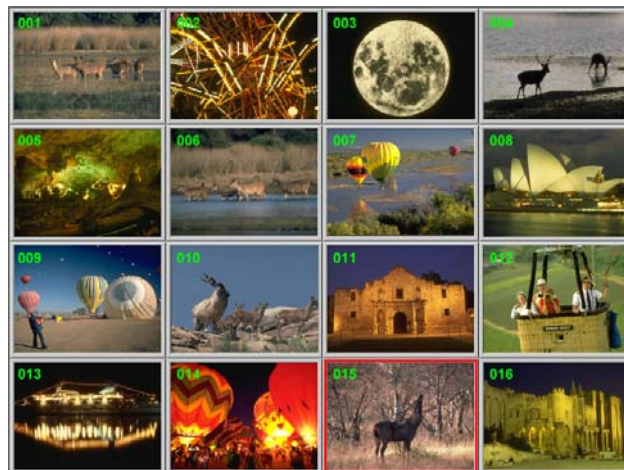




You can see the difference from the pictures below:




## 4.9 16-Channel Preview



The 16-Channel Preview function can display 16 TV channels on-screen at the same time. You can see clearly which TV programs are currently showing on these channels.


To preview the channels:

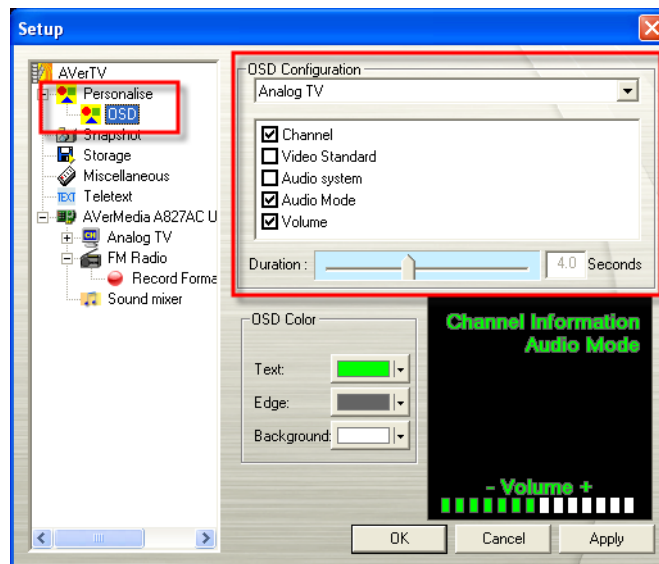
1. Click  to open the Numeric Panel.
2. Click the **16-Channel Preview** button.
3. The screen will be gradually filled up with 16 TV channels, starting from the currently selected channel.



4. Select a channel and press the numeric button “5” on the remote control to view it only and freeze the other channels. If you want to continue to display other channels just press **C** letter on the keyboard.
5. To display a channel on the TV Monitor window, select any one of the 16 channels on-screen and double-click on that channel, or use the arrow  $\uparrow, \downarrow, \leftarrow, \rightarrow$  button of your keyboard and then press **Enter**. You will then be tuned in to that channel.
6. Or, click the right mouse button or press **ESC** to return to the originally selected TV channel.

## 4.10 Changing the OSD Attributes



1. Click the **Setup** button  and in the *Setup* dialog box, click on the **Personalise** icon on the left pane. In this page, you can customize menu effect (Fade In/Fade Out), set the speed of marquee (LCD Speed), and change the appearance of the TV monitor and the control panel (Skins).
2. Then select **OSD**. In this page, you can choose the TV system from the drop-down list for different display information on the TV monitor. You can also adjust OSD color (Text, Edge, Background).



(This picture is only for reference.)

## 4.11 Changing Signal Source


There are two ways to change signal source:

- To switch between TV, radio or external video signals, click the **Radio Source** button  or **Video Source** button  on the control panel.
- Right click on the left pane of the control panel and a pop-up menu appears. Choose the desired signal source.



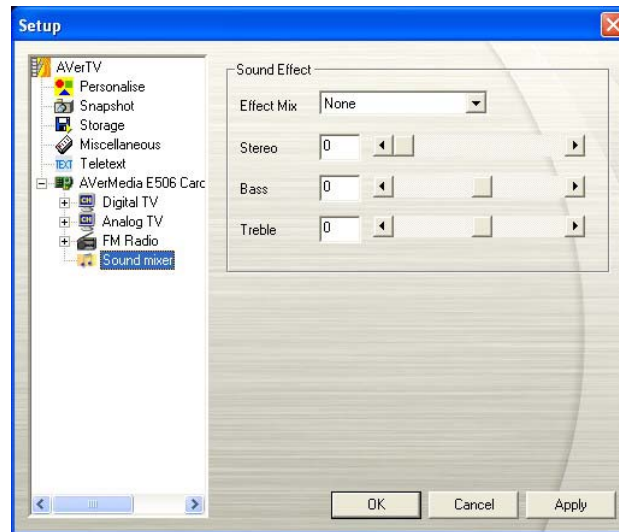
(This picture is only for reference.)

## 4.12 Sound Controlling (Optional)

Click the **Setup** button  and in the *Setup* dialog box, click **Sound mixer** icon on the left pane.

This function provides a variety of sound effects including “Dolby Surround”, “Incredible Mono” and “Incredible Stereo”. You can also drag the slider to control the “Stereo”, “Bass” and “Treble” level.

Please be noted this function is only available for analog signals, eg. Analog TV, FM and so on.



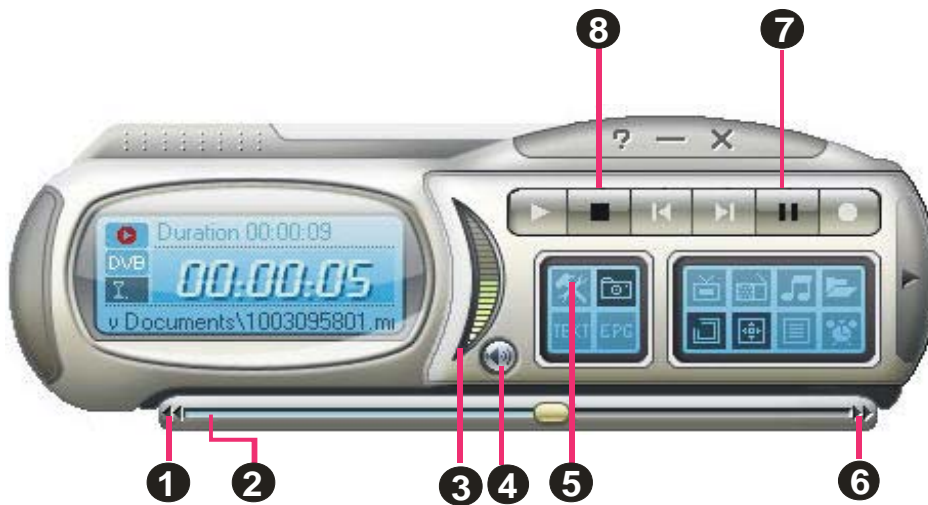
(This picture is only for reference.)

# Chapter 5 TimeShift

The TimeShift function performs background recording of a TV /Radio program, and lets you return and watch any part of the recorded program. At the same time, the live TV /Radio program continues to be recorded and played back so you won't miss any part of the show. You can also advance forward to skip commercials or rewind to replay scenes one more time.

## 5.1 TimeShift Controls

Use the following button controls in the Control Panel to start recording a live program, play back the program from where you left off, advance forward, rewind, and more.




(This picture is only for reference.)

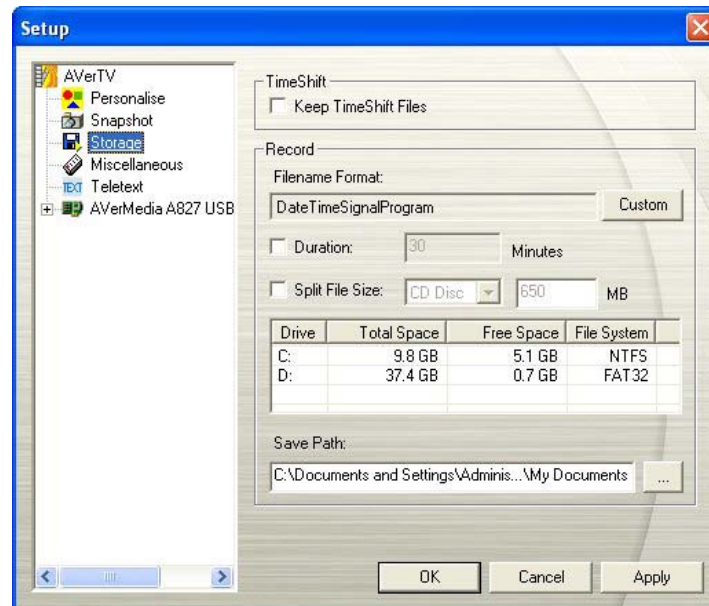
	BUTTON	FUNCTION
1	Backward	Click to move backward in intervals
2	Playback Seek	Drag the slider tab to move to any part of the recorded program.
3	Volume	Drag your mouse up/down to increase/decrease the volume level.
4	Mute	Turn off the sound.
5	Setup	Allows you to: * Scan channels. * Set for Windows power option. *Configure snapshot settings. *Customize recording settings. *Customize the TimeShift function.
6	Forward	Click to skip forward in intervals
7	TimeShift / Pause	Click to perform background recording of the live program and play it back simultaneously. / Click to temporarily freeze the playback.
8	Stop	Click to terminate recording and return to the live program.

## 5.2 Customizing TimeShift Settings

Before you start using the TimeShift function, first check its recording settings to see if they fit your needs.

To check and customize settings:

1. Click the **Setup** button  and in the *Setup* dialog box, click the **Storage** icon on the left pane. You will then see the following settings.




(This picture is only for reference.)





2. By default, TimeShift performs recording of the TV program by creating a temporary video file and deletes this file once you click the **Stop** button. If you want to save the video file, select the **Keep TimeShift Files** check box.
3. In the *Record* section, you can determine your file name format, recording time, file size and destination folder.
4. Click **Apply** to save the new settings and click **OK** to exit the current dialog box. Or, click **Cancel** to use the original settings.

## 5.3 Using the TimeShift Function

To pause the live program:

1. Click the **TimeShift** button  on the Control Panel. The application will begin to record the program.
2. When you want to rewind, use the **Playback Seek** slider bar to move back to the part you want to watch or listen to again. Click and drag the slider tab to the left until you see the part of the show you wish to watch or listen to, then release the mouse button.



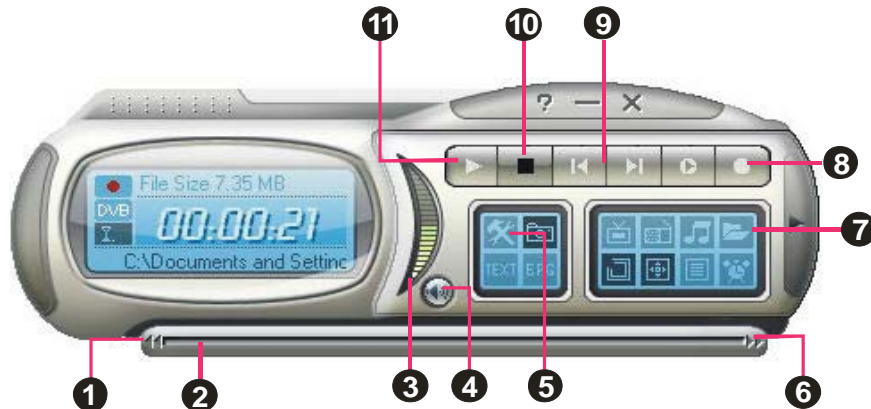
3. You can also click the **Backward** button  to move backward in fixed intervals until you reach the part where you left off.
4. To advance forward and skip some parts of the recording (for example TV commercials), drag the slider tab to the right. You can also click the **Forward** button  to move forward in fixed intervals.
5. To temporarily pause the playback, click the **Pause** button . Click the **Pause** button again to resume.
6. To return to the real-time viewing or listening of the live program, click the **Stop** button . This switches off the TimeShift function and returns you to live program.

# Chapter 6 PVR

You can use your computer as a personal video recorder, and record your favorite TV programs or capture video from an external source into your hard drive. Besides, you can also divide the recording files in proper sizes to facilitate burning onto removable optical media, such as CD-R and DVD disks.

## 6.1 PVR Controls

Use the following button controls for recording and video playback.




(This picture is only for reference.)


	BUTTON	FUNCTION
1	Backward	Click to move backward in intervals.
2	Playback Seek	Drag the slider tab to move to any part of the recorded file.
3	Volume	Drag your mouse up/down to increase/decrease the volume level.
4	Mute	Turn off the sound.
5	Setup	Allows you to: * Scan channels. * Set Windows power options. * Configure snapshot settings. * Customize recording settings. * Customize the TimeShift function.
6	Forward	Click to skip forward in intervals.
7	Play List	Click to create a playlist of video files to play back.
8	Record	Click to start recording.
9	Play Previous/Next File	Click to go to the previous/next video file in the playlist.
10	Stop	Click to stop recording or playback.
11	Play / Pause	Click to playback. / Click to temporarily freeze the playback.


## 6.2 Recording Settings

Before recording, check if the settings meet your needs.

1. Click the **Setup** button . In the *Setup* dialog box, click the **Storage** icon on the left pane.





2. By default, the system sets the recording “Date” and “Time” as the file name format. To create your own file name format, please click **Custom**.
3. The *Duration* option allows you to specify a recording duration otherwise the system will record the largest clip that your hard drive can accommodate.
4. This application lets you to divide the recording files in parts for burning onto removable optical media, such as CD (650 MB) and DVD (4096 MB) discs. Enable the *Split File Size* option and select the appropriate video file size from the drop-down list so that each video file will not exceed the limit. Or you can choose **Custom** to assign the file size you want.
5. Determine the destination folder. Click  to choose a folder you want.
6. Click **Apply** to save the settings and click **OK** to exit the current dialog box. To abort this operation, click **Cancel**.

**Note:** To hide the sound of the TV program when recording, click the Mute button  on the Control Panel.

## 6.3 Using the Recording Function


To record a TV/Radio program that you want, do the following:

1. Click the **Record** button  on the Control Panel.
2. You can click the **Stop** button  to terminate the recording and return to the live TV program.

## 6.4 Playing the Recorded Programs

Each TV program that you recorded will be saved as a video file in the assigned destination folder.


To play back the recorded video files:

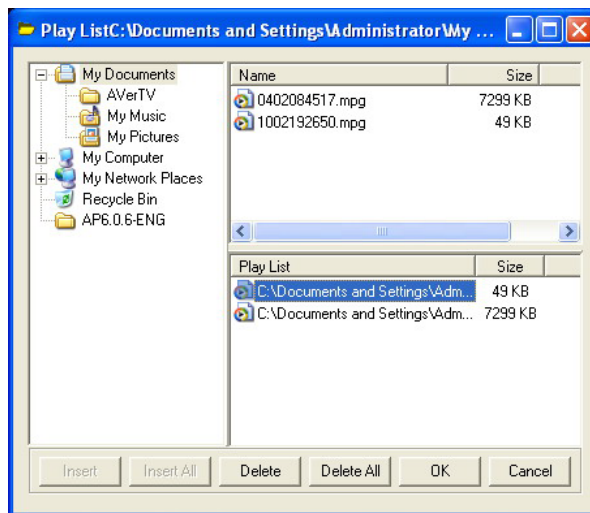
Click the **Play** button  or drag the recorded video file to AVerTV TV monitor or User Panel to play back.

OR,

Drag the recorded video file to AVerTV desktop icon to run the application and play back.

OR,

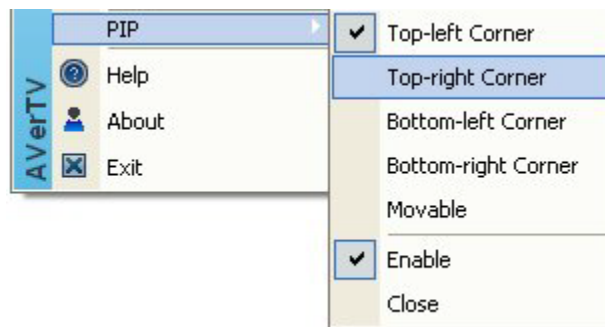
- (1) Click the **Play List** button , and you may see some recorded video files listed in the top rightpane of the *Playback List* window.
- (2) To add more video files to the playback list, first navigate the *file* in the left pane to find the folder that contains the desired video files. When you have located the folder, the media files will then be displayed on the top right pane. Select the files that you want, then click **Insert**, or click **Insert All** to add all media files in the folder to the playback list.
- (3) To delete files from the *Playback List*, select them from the list in the right bottom pane and click **Delete**, or click **Delete all** to delete all files in the playback list.



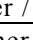
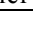




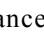

## 6.5 Picture-in-Picture Display

With the picture-in-picture window feature, you will be able to play back recorded video files, and at the same time, watch live TV.

To enable the PIP function, right click the TV monitor, point to **PIP** and choose **Enable**. You can also point to **PIP** and select a desired position of the PIP window. Select **Close** to disable the PIP function.



Position	Description
Top-left Corner / 	Display the PIP window on the top-left corner
Top-right Corner / 	Display the PIP window on the top- right corner
Bottom-left Corner / 	Display the PIP window on the bottom-left corner
Bottom-right Corner / 	Display the PIP window on the bottom-right corner
Movable / 	Resize the PIP window and separate it from the main window



By default, you will be able to play back recorded video files on the main window, and at the same time, watch live TV in the PIP window. If you want to switch the video playback to the PIP window and the live TV to the main window, press the button . You can also press the button  to fix the size of the PIP window and the distance between the main window and the PIP window. To exit the PIP window, press .

# Chapter 7 Image Capture


While you watch TV or recorded video from your PC monitor, you can use the **AVerTV 6** application to capture images for your document, presentation or web page.

## 7.1 Before Capturing

Before you start capturing images, first set the destination folder for saving captured images.

Click the **Setup** button  and select the **Snapshot** icon in the left pane. Then click  to choose a folder where you want to save captured images.

## 7.2 Capturing a TV/ Video Image

 To capture a still image, click the **Snapshot** button on the Control Panel. The *Album* will then appear, displaying thumbnails of the captured image.



	BUTTON
1	Wallpaper
2	Save as
3	Remove
4	Remove All

To capture another image, click the **Snapshot** button on the Control Panel again. New thumbnails will be added to the *Album* as you capture more images.

By double-clicking on the thumbnails, you can view images in a full-screen window with default image viewer.


To display the captured image as your desktop wallpaper :

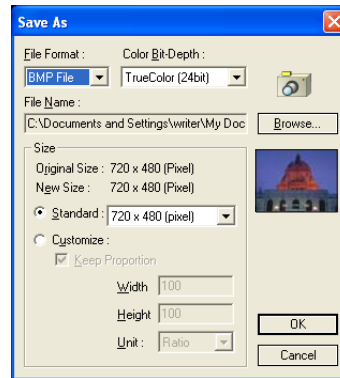
1. Select the thumbnail of the desired image and then click the **Wallpaper** button



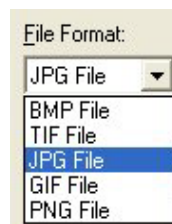
2. The selected image will be displayed as your wallpaper, the background of your desktop.

To save the captured image:

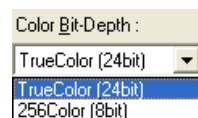
1. Select the thumbnail of the image and then click the **Save As** button . The *Save As* dialog box will then appear.



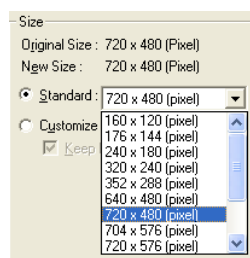
2. From the *File Format* drop-down menu, select the format for saving the captured image.



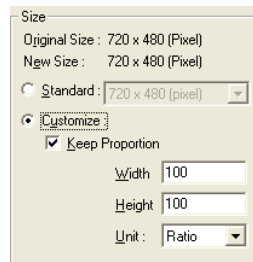
3. Choose the *Color* format.
  - Choose 24-bit to capture image in 16M colors.
  - Choose 8-bit to capture image in 256 colors.
4. Click **Browse** to scan for folders and select a destination location for saving the image. Then specify a file name for saving the captured image.



5. Choose the image size.
  - In the *Size* section, select the **Standard** option and choose a desirable image size from the drop-down list.




- If you want to set your own image size, select **Customize** and enter the image **Width** and **Height**. If you want to maintain relative width and height, select the **Keep Proportion** option. Choose a measurement unit from the **Unit** drop-down list. You can specify any image size you want. The maximum capture size can be 1600×1200.

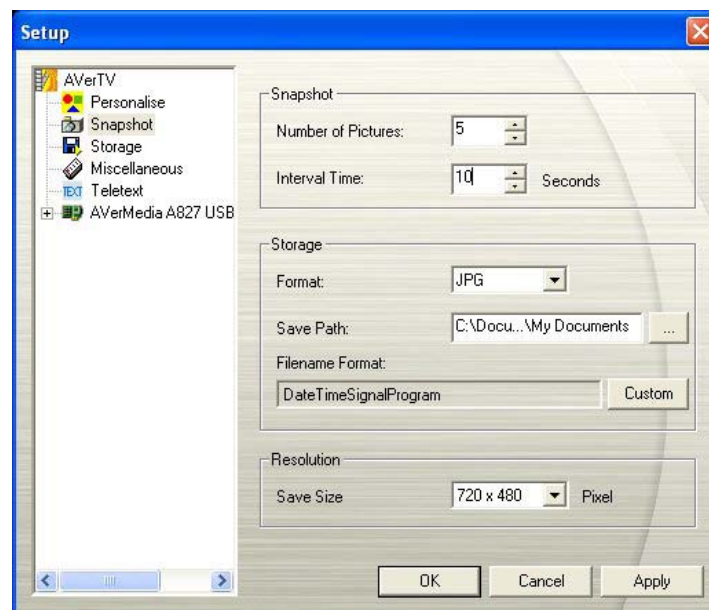


6. Click **OK** to save the image. Click **Cancel** if you do not want to save the image.


## 7.3 Multiple Image Sequence Capture

To capture a continuous sequence of images, do the following:

1. Click the **Setup** button . In the Setup dialog box, click the **Snapshot** icon in the left pane.



(This picture is only for reference.)

2. In the *Number of Pictures* box, specify the number of images you want to capture.
3. In the *Interval Time* box, specify the interval between captures. For instance, if you specify 10 seconds, an image will be captured every 10 seconds.
4. On this page, you can choose the file format, destination folder, file name format and image resolution in advance.
5. Click **Apply** to save the new settings and click **OK** to exit the current dialog box. Or Click **Cancel** if you do not want to change the settings.
6. Click the **Snapshot** button  on the Control Panel to start capturing.

## Chapter 8 Teletext / MHEG-5

Teletext or MHEG-5 (digital Teletext) makes TV viewing a unique experience. It views teletext broadcast from your television programs offering the most updated information on TV Schedules, News, Stock Market Prices, Concert & Theatre information and so on. Teletext/MHEG-5 information may not be available if there is no such service provided in your area.

### 8.1 MHEG-5 Support (UK Digital Teletext Service)

Click Teletext button on the control panel and then the MHEG-5 Window will appear.

To activate the service, simply press the R key or red button once this window opens.




The table below is a list of keyboard shortcuts that you may find useful while using MHEG-5.

Press	Correspond to
R	Red
G	Green
Y	Yellow
B	Blue
0~9 / ↑ ↓ ← →	numeric keys / arrow keys
T	TEXT
ESC	Cannel
Enter	Select

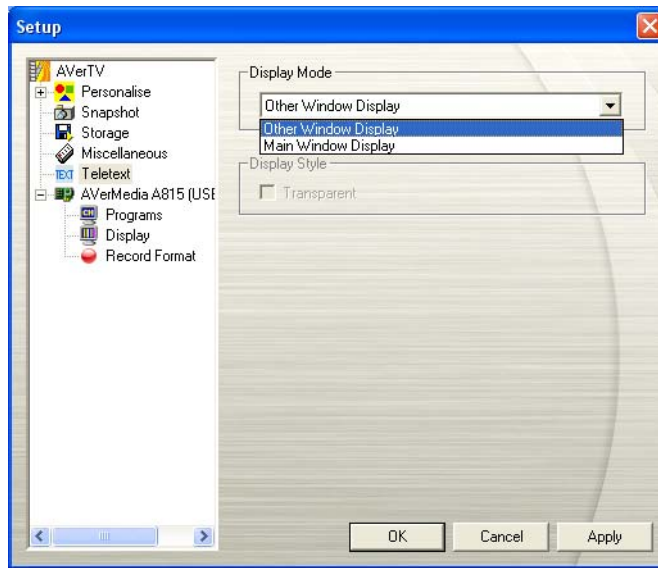
**Note:** MHEG-5 Support will only function in the UK.

## 8.2 Teletext

### 8.2.1 Customize the Display Mode


1. Click the **Setup** button  and in the setup dialog box, click the Teletext icon in the left pane.
2. From the **Display Mode** drop-down list, choose **Other Window Display** to open a new Teletext window or choose **Main Window Display** to overlay the Teletext window on the TV monitor.

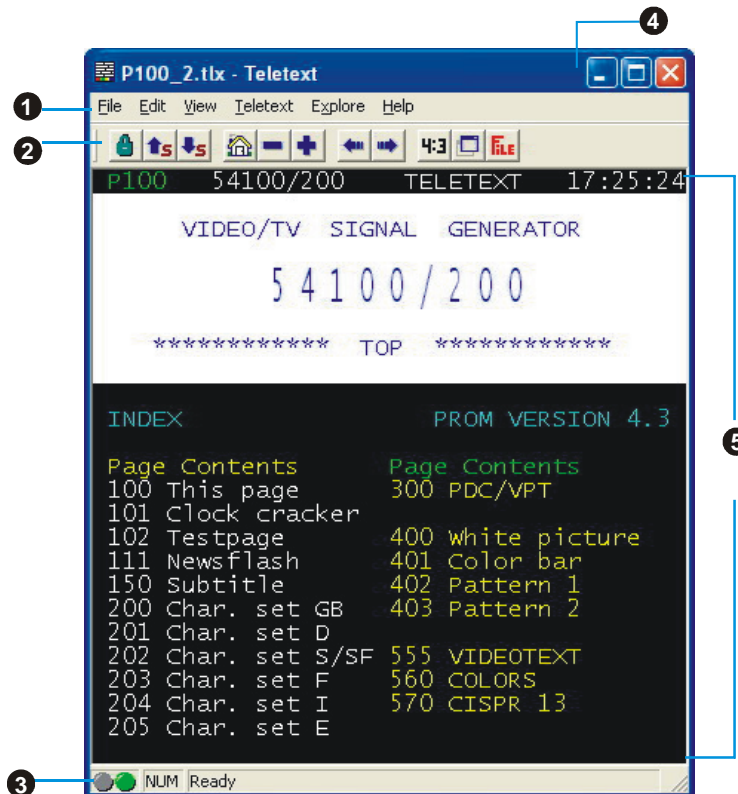
3. Select the **Transparent** check box to make the Teletext window transparent.



(This picture is only for reference.)

### 8.2.2 Overview

Click the **Teletext** button  on the control panel to open the Teletext application as shown below. For more information about Teletext, please see below in this chapter.



	BUTTON	FUNCTION
1	Menu Bar	This contains the names of the available drop-down list option menus. To access any of the menu items, simply click on it or hold down Alt and press the first character of each item.
2	Toolbar	It includes buttons that gives quick access to perform certain frequently used functions from the <b>Menu Bar</b> .

3	Status Bar	The status bar is located in the lower left corner of the window. It contains a short text message or explanation of the currently selected menu command.
4	Title Bar	This is located at the top of the window. It contains the current displayed page number or in hexadecimal page number of an active window.
5	Teletext Browser	Teletext information is displayed in this area. The information would be the TV schedules, news, stock market reports, concert & theater information and so on.

### 8.2.3 Toolbar Buttons



#### Lock Sub page

Locks the current sub page. The upcoming transmitted sub pages will be stored in the Teletext Cache for later use.



#### Previous Sub page/ Next Sub page

Switches to the next or the previous sub page.



#### Home (Ctrl+H)

Connects to the teletext home page which always goes to page 100, but page 100 may not be the primary teletext source.



#### Previous Page (-) / Next Page (+)

Displays the preceding or the succeeding teletext in hexadecimal page number.



#### History Back / History Forward

Retrieves the previous page in the history list.

Moves a page forward in the history list. The command is usable after one or more back steps in the history list.



#### TV Scale

Changes the proportion of the Teletext window to 4 by 3.



#### Always On Top

Makes Teletext Window float over the top of other applications.



#### Teletext File

Switches between the Teletext file which is opened from the previously saved file and the most recent Teletext information.

### 8.2.4 LED Lamp

Different LED color indicates different states.

#### Left LED Lamp:

Gray -- The system does not receive the teletext broadcast data.

Green -- The system is receiving the teletext broadcast data.

#### Right LED Lamp:

Green -- The cache in Teletext application is running less than 90% usage.

Yellow -- The cache in Teletext application is running over 90% usage.

Red -- The cache in Teletext application is running out.



## 8.2.5 Using Teletext

The following briefly describes how to use the Teletext feature.

### Teletext Page

There are two page numbers displayed on the first line of each teletext page. The page number on the left is the page number that you have selected or keyed in. The other one in the middle of line is the page number of the currently displayed teletext data.

The newly selected page number will appear on the upper left corner of the page. Sometimes, this may take a while to retrieve the newly selected teletext page. There will be no changes on the page when there is no page data transmitted with the number you have selected.

A teletext page can be selected with one of the following methods:

- Key in the hexadecimal or teletext page number using the numeric buttons of your keyboard or AVerMedia TV remote control.
- Press the + (positive) or – (negative) button to move to the succeeding or preceding teletext page.

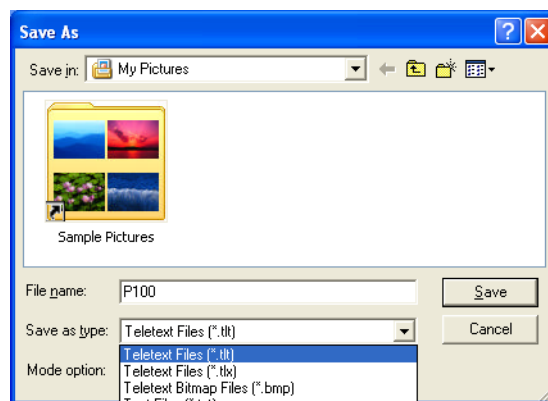
### Copying a Teletext Page

1. Simply click and drag over the text or the area that you want to copy using the mouse.
2. Choose **Copy** from the **Edit** menu (*Alt+E, C*) or press *Ctrl+C*.
3. You can then paste the contents of the teletext page in TXT or BMP format to a document you are working with.

### Saving a Teletext Page

Some teletext pages include a number of subpages. If the file has subpages, teletext will also save the existing subpages.

1. A teletext page can be saved using one of the following ways:
  - To automatically save the file using the displayed teletext page as the filename and the default file format, choose **Save** from the **File** menu or press *Ctrl+S*.
  - To save the file by specifying your own filename and different file format, choose **Save As** from the **File** menu or press *Ctrl+A*.
2. A save as dialog box will appear:



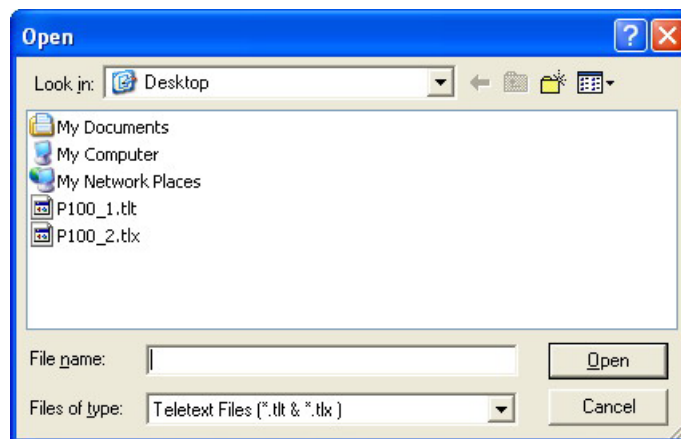
3. Select the file format to use for saving the teletext page. You can save the teletext page in :

**TXT** Text file format  
**BMP** Windows bitmap file format  
**TLT** Teletext file format  
**TLX** Teletext file format

4. Enter a filename and click OK.

### Opening a Teletext Page

1. Choose **Open** from the **File** menu or press *Ctrl+O*.
2. From the Open dialog box, select the file containing the teletext page you want and click **OK**.



### Opening Another Teletext Window


To open another teletext window, choose **New Window** from the **File** menu or press *Ctrl+W*.

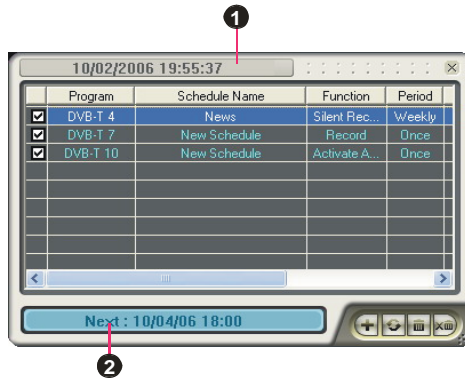
### Closing the Active Teletext Window

Choose **Close Window** from the **File** menu or press *Ctrl+L* to close the active teletext page window.

# Chapter 9 Scheduler

The **Scheduler** allows you to create a list of preset schedules for watching and recording your favorite TV/Radio programs. You can set the day and time to record the TV/Radio program and specify the length of recording.

To run this application, click the **Schedule** button  on the Control Panel. Then the Scheduler dialog box will appear.



BUTTON	
1	Current Time
2	Selected Schedule

The check box next to the **Program** column (as shown at right) indicates the schedule will be executed at a preset time. Once the application starts to execute a scheduled task, the system will clear the check mark automatically. If you want to skip the schedule temporarily, just clear the check box.

Program	
<input checked="" type="checkbox"/>	DVB-T 4
<input type="checkbox"/>	DVB-T 7
<input checked="" type="checkbox"/>	DVB-T 10

## 9.1 Schedule Management

This displays a list of preset schedules you have created.

**Modify** 

Select a preset schedule and click this button to make changes.

**Delete** 

Click this to delete the selected schedules.

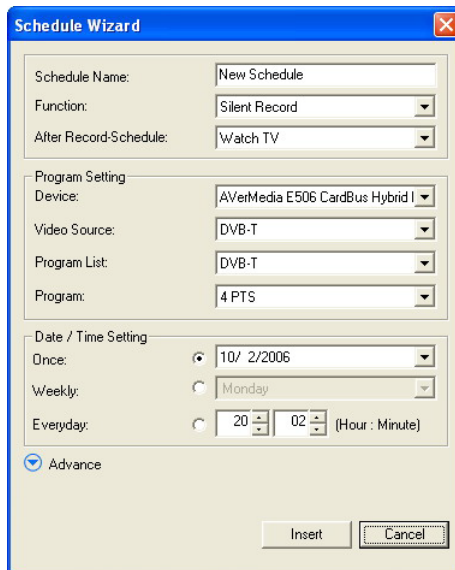
**Delete All** 

Click this to delete all schedules.


## 9.2 Adding Schedules

To create a new schedule:

1. Click the **Add** button .
2. The following dialog box will then appear:

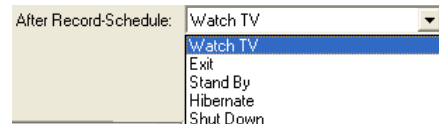



3. Type the desired name in the *Schedule Name* text box.
4. From the *Function* drop-down list, select **Activate AVerTV** to watch a TV program or listen to a radio broadcast. Otherwise, select **Record** to save a TV/Radio program for future viewing/listening. You can also select **Silent Record** which means the system will perform background recording instead of activating the TV/Radio program.

**Note:** If you select **Silent Record**, when the application is performing the recording task, the icon  will appear on the task bar (the lower right corner of the screen). To immediately watch or listen to the TV/Radio program which is being recorded, just double-click this icon.

5. In the *After Record-Schemes*, it automatically switches to the selected power control mode when the schedule recording is completed. Choose an appropriate power control status listed below:

- Watch TV: Switch to real-time TV mode.
- Exit: Turn off the AVerTV Application.
- Stand By: Turn off your monitor and hard disks.
- Hibernate: Save everything and then turn off your computer.
- Shut Down: Turn off your computer.



**Note:** If you choose **Watch TV** from the drop-down list, after completing the **Silent Record** task, the icon  will appear on the task bar (the lower right corner of the screen). Just double-click this icon, you can immediately watch live TV or listen to the radio.

6. In the *Program Setting* section, select the device, video source, group and channel you want.
7. Set the schedule to tune in live TV or to perform recording. You can set the schedule on **Once**, **Daily** or **Weekly**.
  - Choose **Once** to perform schedule at a preset day and a preset time.
  - Choose **Weekly** to perform schedule every week, at a preset day and time.
  - Choose **Everyday** to perform schedule everyday at a preset time.
8. If you choose **Activate AVerTV** in step 4, click **Insert** to complete the settings. If you choose **Record** or **Silent Record**, you need to do the following.
9. Click the **Advance** icon.

10. In the Record Setting section, you can determine the file format, recording duration, file size, destination folder or audio mode.
11. Click **Insert** to save the new schedule or click **Cancel** to abort the saving.

## Chapter 10 Hot Keys

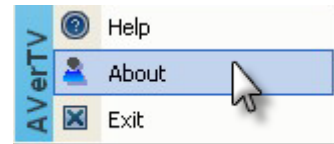
Hot Key	Description	Function
UP/DOWN ARROW	Channel or Frequency Up/Down	Press to go to the next upper/lower TV/Radio channel.
L	Channel Loop	Press to go to the previously accessed TV/Radio channel.
NUMERIC KEYS	Select Channel	Use NUMERIC KEYS to directly enter the TV/Radio channel number.
ESC	Stop or, Change back to Normal View	Stop (playback, recording, TimeShift, or 16-Channel Preview). Or change full screen back to normal view.
F1	Help	Open the Users Manual.
F2	Minimize	Minimize the application and an icon will appear in the notification area. To return to the previous screen, double click the icon again.
F5	Full Screen	Show TV/Video in full screen.
F6	Display (OSD) information	Display information on the TV monitor.
F8	16-Channel Preview	Press to perform 16-Channel Preview function.
+/- (on your numeric keypad)	Volume	Press to increase or decrease the volume level.
LEFT/ RIGHT ARROW	Rewind/ Fast Forward	Press to rewind or fast forward (for playback and TimeShift).
A	Audio Mode	Choose between available languages.
D	Show/Hide the Control Panel	Toggles between showing and hiding the control panel.
M	Mute	Turn off/on the sound.
Ctrl + N	Play Next File	Play the next file in the playlist.
Ctrl + P	Play Previous File	Play the previous file in the playlist.
Ctrl + R	Record	Start recording.
P	Play / Pause	Play/Pause (for playback, recording, and TimeShift).
Ctrl + S	Snapshot	Capture an image (or a continuous sequence of images).
Ctrl + T	TimeShift	Enable the TimeShift function.
Insert	Transparent	Make Teletext window transparent. (Only available for Teletext overlay mode.)
Page Up	Previous page	Go to the preceding Teletext page.
Page Down	Next page	Go to the succeeding Teletext page.
Home	Home page	Go the Teletext home page.




# Chapter 11 Customer Service

The AVerTV 6 application provides a convenient tool, which allows users to contact AVerMedia's customer service department easily via the website. Please make sure that you have already connected to the Internet.

To contact the customer service:

1. Right-click on the TV monitor window. When a menu list pop-up, choose **About** (as shown at right).
2. When a information dialog box appear, select the office in your area from the drop-down list.



3. Click  to access the product information webpage. Or you can click  to connect to our technical support webpage. Then click  to exit the current dialog box.

[www.avermedia.com](http://www.avermedia.com)