



GL-300 GPS TRACKER

User Manual



GETTING STARTED - - - - -	3
Components - - - - -	3
Features - - - - -	3
Activating the Device - - - - -	4
Charging the Device - - - - -	5
Powering the Device - - - - -	5
Placing the Device - - - - -	5
Accessing the Spy Tec GPS Portal/Interface - - - - -	6
Using the Spy Tec GPS Interface - - - - -	8
ACCOUNT INFORMATION - - - - -	9
CHANGE SETTINGS - - - - -	9
Set Home Address - - - - -	10
Change Password - - - - -	10
Change Driver Icon - - - - -	10
Add New Driver/Vehicle - - - - -	11
Remove Driver - - - - -	12
Change Alert Settings - - - - -	12
Add Email for Alerts - - - - -	13
Add SMS for Alerts - - - - -	13
Remove Email/SMS for Alerts - - - - -	14
Change Time Zone - - - - -	14
TRACK HISTORY - - - - -	15
GEOFENCING - - - - -	18
Create Geofencing Area - - - - -	18
View/Delete Geofences - - - - -	19
REPORT GENERATION - - - - -	20
Travel Log Report - - - - -	20
Mileage Report - - - - -	22
Fuel Report - - - - -	24
DTC Report - - - - -	25
Bottom Buttons - - - - -	26
REAL TIME - - - - -	27
Precautions - - - - -	28
Frequently Asked Questions (FAQs) - - - - -	28
How do I unfreeze the device? - - - - -	28
Why is there unexpected interference? - - - - -	28
What is the battery life? - - - - -	28

GETTING STARTED

Components

- GPS Tracker
- Charger

Features

- Real-Time Tracker
- Track a Child, Adult, Vehicle or Asset
- 2" x 1" x .8"
- Access Remotely via Computer, Tablet or Phone
- Receive Location and Speed Alerts by E-mail & Text Message
- Rechargeable Battery Life up to 2 Weeks
- Geo-Fence
- Monthly Subscription Applies
- View Route on Google Maps or Google Earth
- One Year Warranty

Activating the Device

After the device is purchased, a monthly service plan must be activated so that the device is able to send data to your Spy Tec account. There is a basic option for \$25 per month that allows 1 minute updates. Updates are then 30, 10 and 5 seconds for the more expensive plans, as shown in the chart below.

Activate your GPS device(s) by filling out the activation form at <http://www.spytecinc.com/gpstracking>. Tracking plans and payment can be setup there using major bank cards, credit cards or gift cards. An e-mail will be sent within 24 hours of activating your device. This email will contain a link to the GPS site (www.spytecgps.com), as well a user name and password.

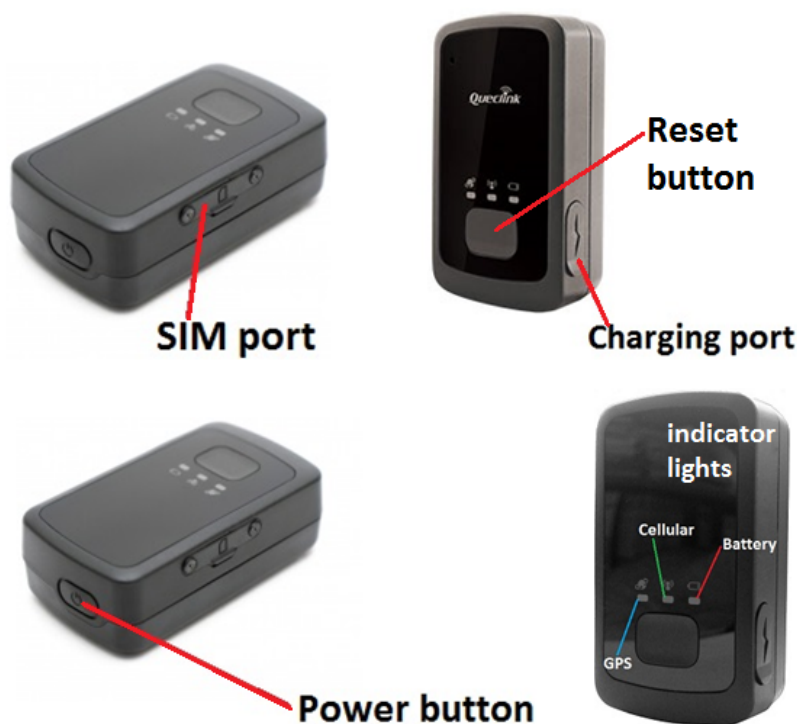
	BASIC \$25/Month	PLUS \$30/Month	PRO \$39/Month	ELITE \$45/Month
	Most Popular			
Update Frequency <small>🔗 What's Update Frequency?</small>	1 Minute	30 Seconds	10 Seconds	5 Seconds
Tracking Range <small>🔗 What's Tracking Range?</small>	United States	United States	United States	United States
Size	Height: 2.65 inches (67.5 mm) Width: 1.57 inches (40 mm) Depth: 0.82 inch (21 mm) Weight: 2.11 ounces (60 grams)	Height: 2.65 inches (67.5 mm) Width: 1.57 inches (40 mm) Depth: 0.82 inch (21 mm) Weight: 2.11 ounces (60 grams)	Height: 2.65 inches (67.5 mm) Width: 1.57 inches (40 mm) Depth: 0.82 inch (21 mm) Weight: 2.11 ounces (60 grams)	Height: 2.65 inches (67.5 mm) Width: 1.57 inches (40 mm) Depth: 0.82 inch (21 mm) Weight: 2.11 ounces (60 grams)
Battery Life	Up to 2 Weeks	Up to 2 Weeks	Up to 2 Weeks	Up to 2 Weeks
Applications	<ul style="list-style-type: none"> ✓ Personal Tracking ✓ Vehicle Tracking ✓ Asset Tracking 	<ul style="list-style-type: none"> ✓ Personal Tracking ✓ Vehicle Tracking ✓ Asset Tracking 	<ul style="list-style-type: none"> ✓ Personal Tracking ✓ Vehicle Tracking ✓ Asset Tracking 	<ul style="list-style-type: none"> ✓ Personal Tracking ✓ Vehicle Tracking ✓ Asset Tracking
Compatibility	Any Smartphone, Tablet, PC or Mac	Any Smartphone, Tablet, PC or Mac	Any Smartphone, Tablet, PC or Mac	Any Smartphone, Tablet, PC or Mac
Features	<ul style="list-style-type: none"> ✓ Geofence Alerts ✓ Google Earth ✓ Google Maps ✓ Unlimited Data Plan ✓ Detailed Travel Reports ✓ Text and E-mail Reports ✓ Full Historical Data 	<ul style="list-style-type: none"> ✓ Geofence Alerts ✓ Google Earth ✓ Google Maps ✓ Unlimited Data Plan ✓ Detailed Travel Reports ✓ Text and E-mail Reports ✓ Full Historical Data 	<ul style="list-style-type: none"> ✓ Geofence Alerts ✓ Google Earth ✓ Google Maps ✓ Unlimited Data Plan ✓ Detailed Travel Reports ✓ Text and E-mail Reports ✓ Full Historical Data 	<ul style="list-style-type: none"> ✓ Geofence Alerts ✓ Google Earth ✓ Google Maps ✓ Unlimited Data Plan ✓ Detailed Travel Reports ✓ Text and E-mail Reports ✓ Full Historical Data

Charging the Device

Lift the flap covering the charging port and plug the charger into the unit via USB port, then into an electrical outlet. When fully charged as indicated by the battery icon to the bottom right on the device, remove the device from the charger.

The battery icon will have a diminishing fill eventually resulting in a red portion with empty outline indicating a low battery. Recharge the device as needed.

**The SIM card is already installed in the device. Do not remove or replace it.*



Powering the Device

To turn the device on, press the Power button once. As the device reaches the satellite(s), the middle light will begin blinking and any movement will be reported in time increments according to the GPS plan. To turn the device off, press the Power button again

Placing the Device

Make sure that the device is placed near a window or on a surface that does not obstruct the signal reception. It is best not to be placed in a trunk. Watch the signal lights to ensure that the best reading is made.

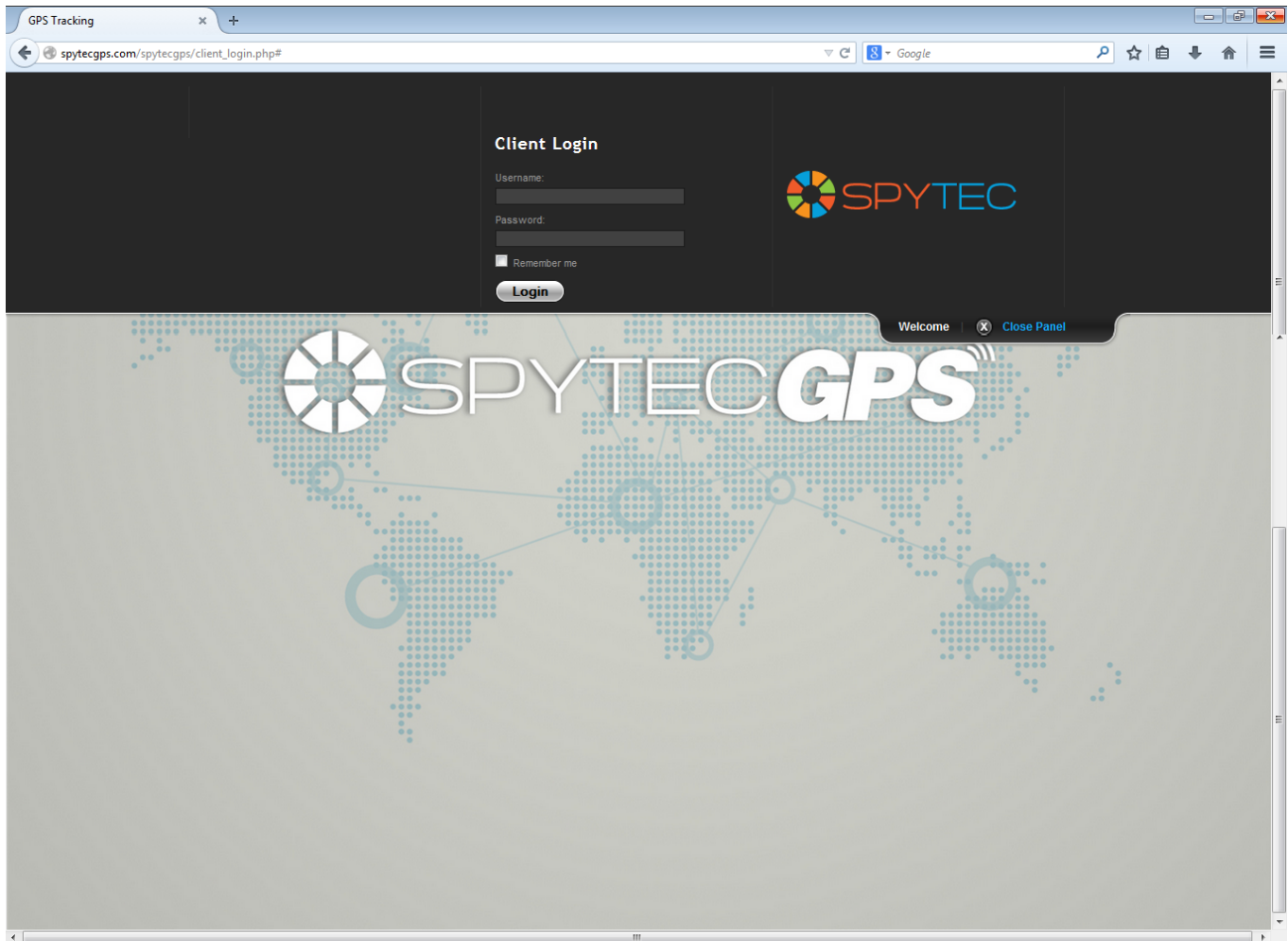
Accessing the Spy Tec GPS Portal/Interface

Before logging into a Spy Tec GPS Portal account, make sure that browser software is up to date.

Go to <http://spytecgps.com> (http://spytecgps.com/spytecgps/client_login.php) and click the Login In link at the upper right of the page. A login tab will open.

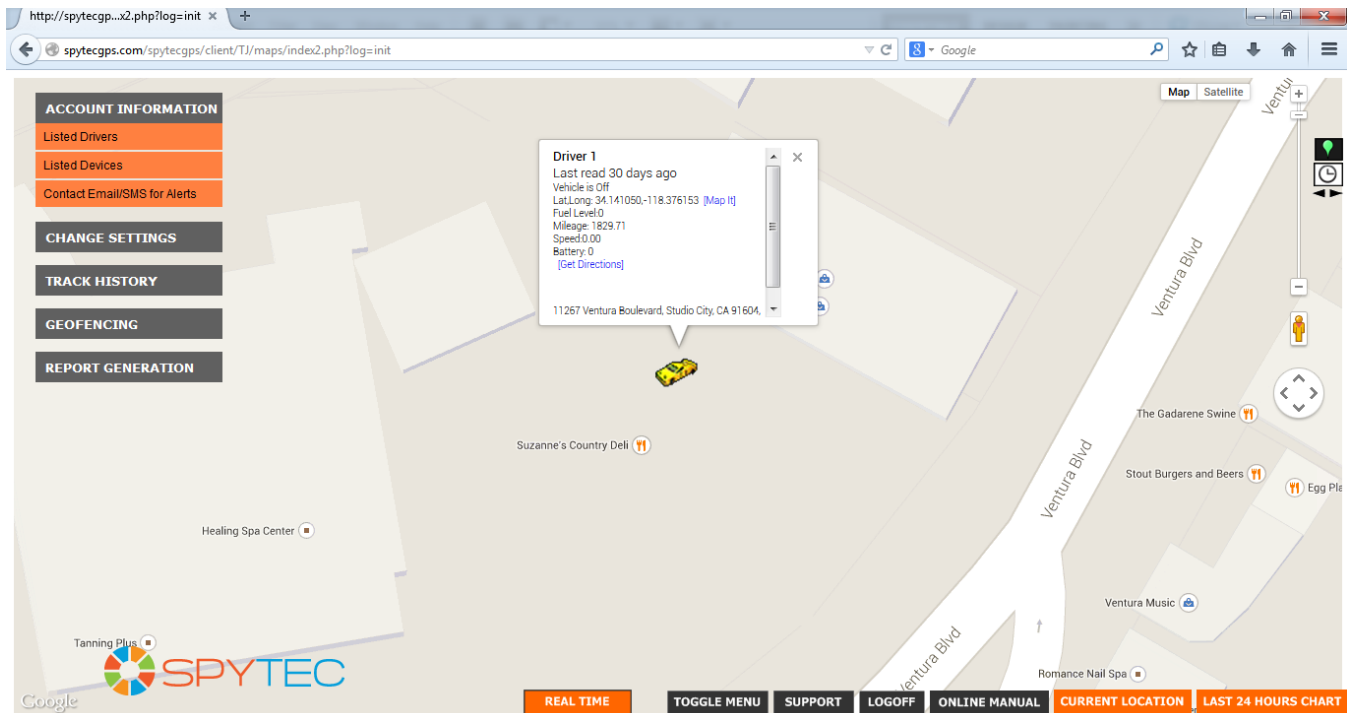


In the open tab, enter username and password and then press the Login button. Once logged in, the interface will open with a menu to the top left. The map will appear with the GPS locator position to the device's location coordinates.



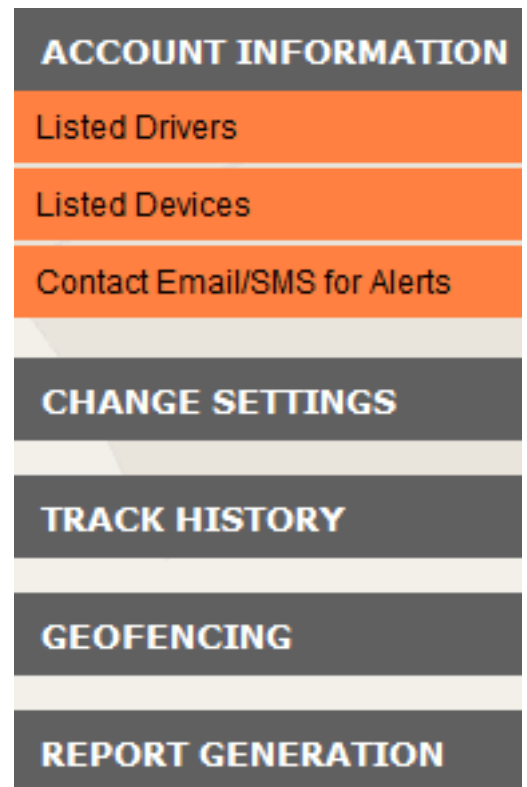
Using the Spy Tec GPS Interface

At the top left of the screen, there is a user menu with drop down buttons: ACCOUNT INFORMATION, CHANGE SETTINGS, TRACK HISTORY, GEOFENCING and REPORT GENERATION.



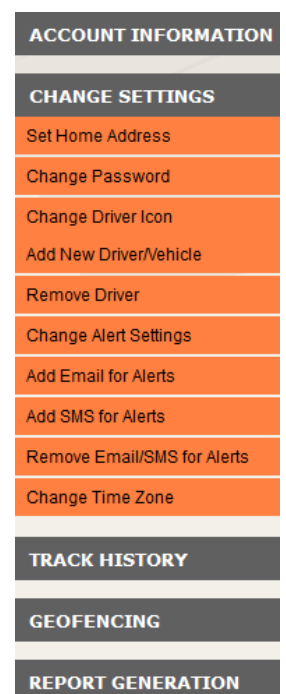
ACCOUNT INFORMATION

Click the ACCOUNT INFORMATION button to open a drop-down menu with Listed Drivers, Listed Devices and Contact Email/SMS for Alerts buttons. By clicking the Listed Drivers option, a pop up will appear with listed drivers as assigned to the active device. By clicking the Listed Devices option, a pop up will appear with listed devices (in this case the GL300), the date of activation and device description. The Contact Email/SMS for Alerts button will show contact information for active alerts as selected in the CHANGE SETTINGS > Add Email for Alerts or > Add SMS for Alerts button drop-down menu.



CHANGE SETTINGS

The CHANGE SETTINGS button enables a drop down menu with the following options: Set Home Address, Change Password, Change Driver Icon, Add New Driver/Vehicle, Remove Driver, Change Alert Settings, Add Email for Alerts, Add SMS for Alerts, Remove Email/SMS for Alerts and Change Time Zone. Click any option to access a pop up screen that allows for preference changes.

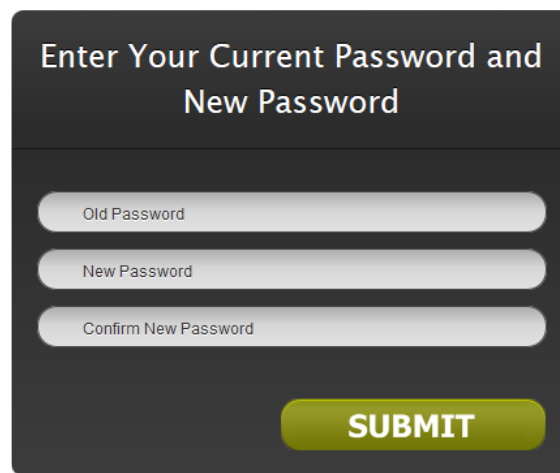


Set Home Address

This feature has been disabled.

Change Password

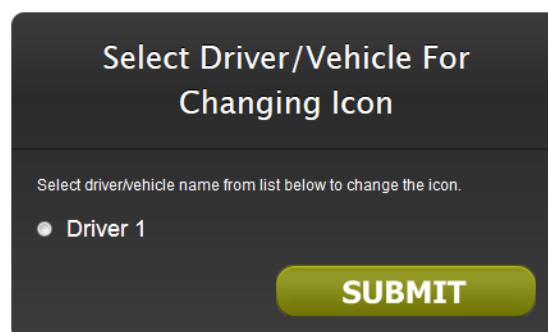
By choosing the Change Password option, a pop up window appears as seen below. Enter the old password in the Old Password field and then a new password in the New Password field. Confirm by re-entering the new password in the Confirm New Password field. Click the SUBMIT button. Use the new password for the next login.



A dark-themed pop-up window titled "Enter Your Current Password and New Password". It contains three input fields: "Old Password", "New Password", and "Confirm New Password". At the bottom right is a green "SUBMIT" button.

Change Driver Icon

Click on the Change Driver Icon menu option to change the appearance of the vehicle that appears on the GPS interface. A pop up will appear that allows the user to choose a Driver as assigned to the device.



A dark-themed pop-up window titled "Select Driver/Vehicle For Changing Icon". Below the title is a small instruction: "Select driver/vehicle name from list below to change the icon." There is a single radio button option labeled "Driver 1". At the bottom right is a green "SUBMIT" button.

Remove Driver

To Remove a Driver from the GPS device, click the Remove Driver menu option and check the box corresponding to the driver that is to be removed. Click the SUBMIT button.

Select Driver

Make a selection from below to remove driver name. Once the driver name is removed, the associated device data cannot be charted. To view device data again, add a new driver name from menu option "Add New Driver/Vehicle"

☐ Driver 1

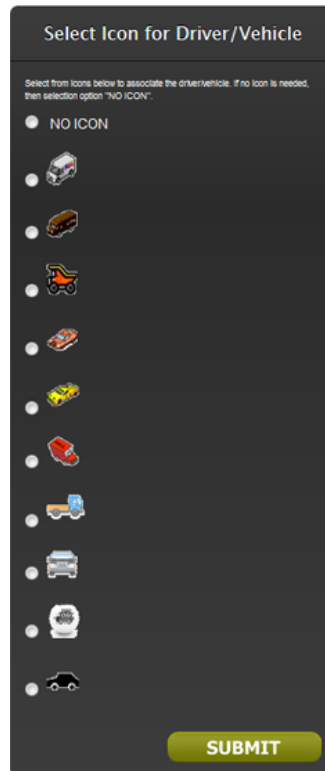
☐ John Smith

SUBMIT

Change Alert Settings

Select the Change Alert Settings item from the drop-down menu to set alert options for Geofencing (set parameters/boundaries), Speed, Ignition Off, Ignition On, Tow Alert, Function Key Alert and Low Battery Alert. Check the box(es) that corresponds to the desired alert(s.) Enter a Speed Limit and/or Low Battery Alert option in the field below. For example, if an alert is to be sent when the car reaches 75 mph, enter 75 in the Speed Limit field and make sure that the box next to Speed is checked. Click the SUBMIT button.

Choose the radio button that corresponds to the Driver for which you would like to add a new icon and click the SUBMIT button. A new pop up will appear with a radio button for each corresponding driver icon option. Choose an option, scroll down and click the SUBMIT button.





Select Icon for Driver/Vehicle

Select from icons below to associate the driver/vehicle. If no icon is needed, then selection option "NO ICON".


☐ NO ICON


☐ 

☐ 


☐ 

☐ 

☐ 

☐ 

☐ 

☐ 

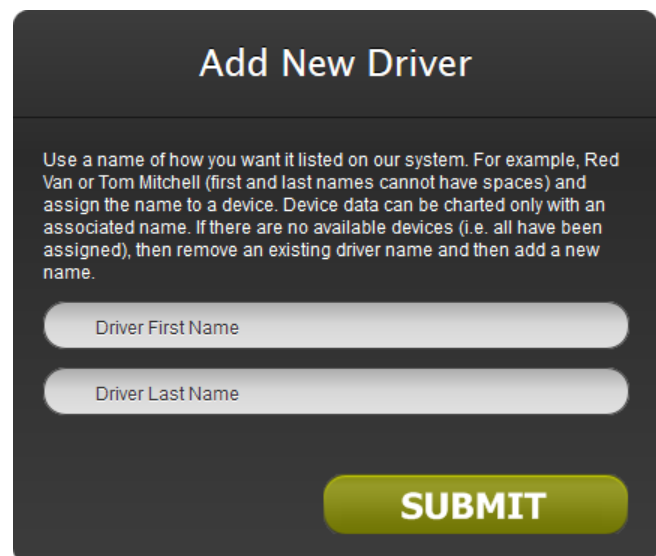
☐ 

☐ 

SUBMIT

Add New Driver/Vehicle

Choose the Add New Driver/Vehicle option from the drop-down menu. An Add New Driver pop up will appear. Enter the new driver's first and last name in the Driver First Name and Driver Last Name fields. Click the SUBMIT button. Another pop up will appear. Select the radio button corresponding to the device that will receive the new driver and click the SUBMIT button.



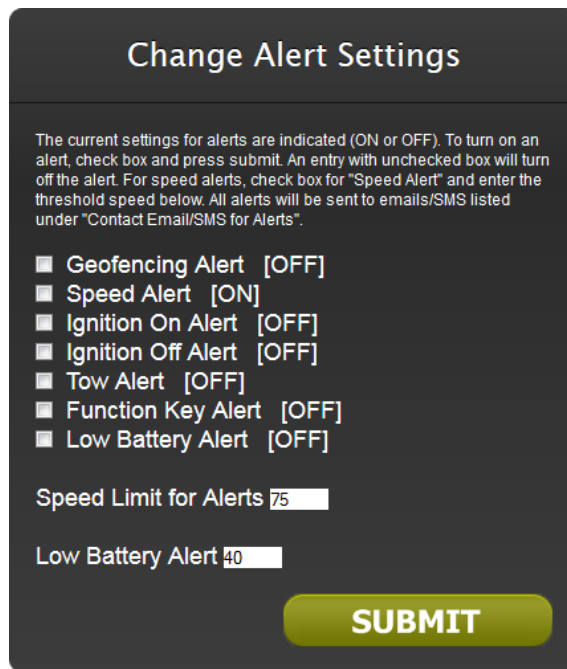
Add New Driver

Use a name of how you want it listed on our system. For example, Red Van or Tom Mitchell (first and last names cannot have spaces) and assign the name to a device. Device data can be charted only with an associated name. If there are no available devices (i.e. all have been assigned), then remove an existing driver name and then add a new name.

Driver First Name

Driver Last Name

SUBMIT



The current settings for alerts are indicated (ON or OFF). To turn on an alert, check box and press submit. An entry with unchecked box will turn off the alert. For speed alerts, check box for "Speed Alert" and enter the threshold speed below. All alerts will be sent to emails/SMS listed under "Contact Email/SMS for Alerts".

- ☐ Geofencing Alert [OFF]
- ☒ Speed Alert [ON]
- ☐ Ignition On Alert [OFF]
- ☐ Ignition Off Alert [OFF]
- ☐ Tow Alert [OFF]
- ☐ Function Key Alert [OFF]
- ☐ Low Battery Alert [OFF]

Speed Limit for Alerts

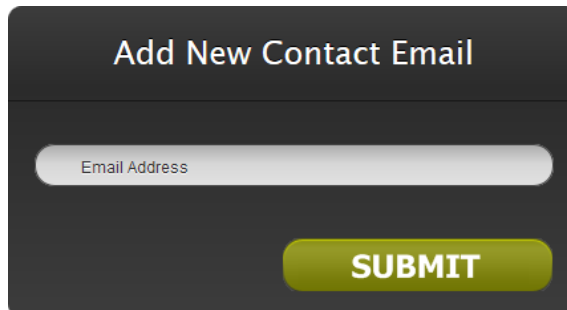
Low Battery Alert

SUBMIT

Now that updates have been made, the settings will have appropriate [ON] or [OFF] shown beside each option.

Add Email for Alerts

After clicking the Add Email for Alerts option, a pop up with an Email Address field will show. Type the email address that alerts will be sent to and click the SUBMIT button.



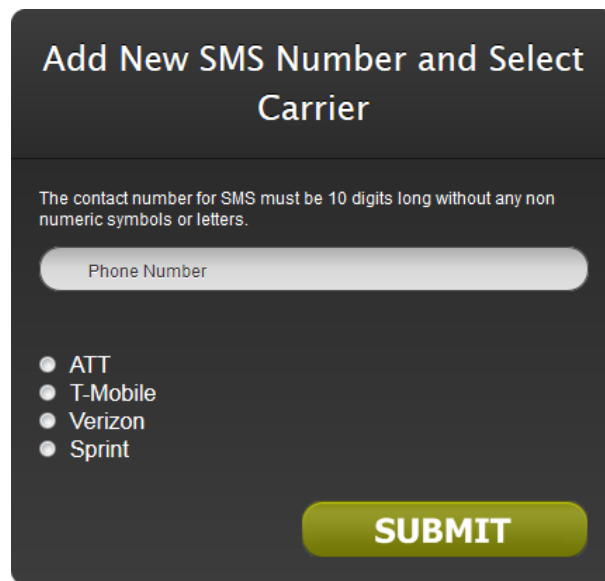
Add New Contact Email

Email Address

SUBMIT

Add SMS for Alerts

Choose the Add SMS for Alerts option from the menu and enter a phone number in the field provided on the Add New SMS Number and Select Carrier pop up. Choose the radio button that corresponds with the service provider (ATT, T-Mobile, Verizon or Sprint) and then click the SUBMIT button.



Add New SMS Number and Select Carrier

The contact number for SMS must be 10 digits long without any non numeric symbols or letters.

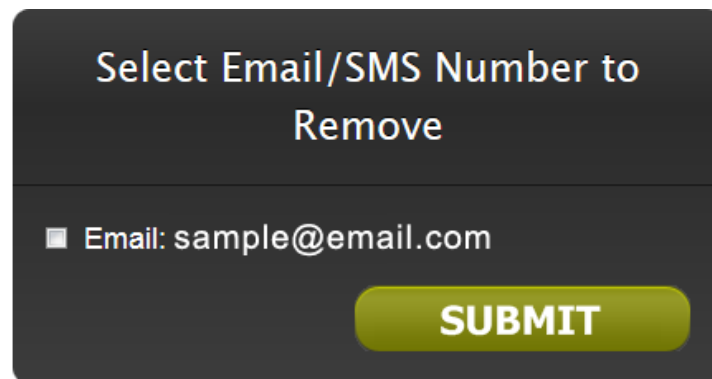
Phone Number

- ☐ ATT
- ☐ T-Mobile
- ☐ Verizon
- ☐ Sprint

SUBMIT

Remove Email/SMS for Alerts

Choosing the Remove Email/SMS for Alerts option will open a pop-up showing a checkbox with corresponding options as set in Email/SMS alerts settings. Check the email or SMS account that needs removal and click the SUBMIT button.



Select Email/SMS Number to Remove

☐ Email: sample@email.com

SUBMIT

Change Time Zone

Choose the Select/Change Timezone option to update timezone preferences. A pop-up will appear with radio buttons for each timezone (GMT). Select the radio button for any given timezone and then click SUBMIT.

SELECT/CHANGE TIMEZONE

Current Time Zone is GMT-5

- GMT+10
- GMT+9
- GMT+8
- GMT+7
- GMT+6
- GMT+5
- GMT+4
- GMT+3
- GMT+2
- GMT+1
- GMT0
- GMT-1
- GMT-2
- GMT-3
- GMT-4
- GMT-5
- GMT-6
- GMT-7
- GMT-8
- GMT-9

SUBMIT

TRACK HISTORY

The TRACK HISTORY button allows you to View Track History by clicking the View Track History link in a drop-down menu.

ACCOUNT INFORMATION

CHANGE SETTINGS

TRACK HISTORY

View Track History

GEOFENCING

REPORT GENERATION

Clicking the View Track History option will open a pop up that asks for dates of travel for which a detailed report will be generated according to Stops, Ignition On/Off, Movements or All of these maneuvers. Begin by entering a Start and End Date for the report.

Select Date Range And Data Points

- ☐ ALL
- ☐ STOPS ONLY
- ☐ IGNITION ON/OFF
- ☐ MOVEMENTS ONLY

SUBMIT

The TRACK HISTORY button allows you to View Track History by clicking the View Track History link in a drop-down menu.

Select Date Range And Data Points

November 2014

Su	Mo	Tu	We	Th	Fr	Sa
						1
2	3	4	5	6	7	8
9	10	11	12	13	14	15
16	17	18	19	20	21	22
23	24	25	26	27	28	29
30						

SUBMIT

Choose the corresponding radio button for All, Stops Only, Ignition On/Off or Movements only and click SUBMIT.

Select Date Range And Data Points

- ☐ ALL
- ☐ STOPS ONLY
- ☐ IGNITION ON/OFF
- ☐ MOVEMENTS ONLY

SUBMIT

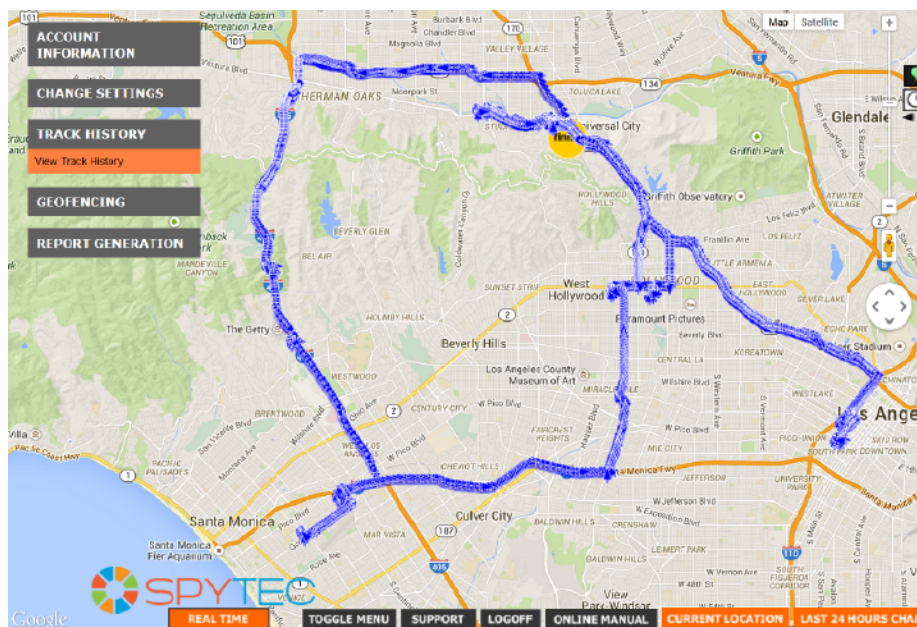
Select the Driver/Vehicle for which the report is to be generated and click SUBMIT.

Select Driver

- ☐ Driver 1
- ☐ John Smith

SUBMIT

A map view will appear as indicated with given preferences in previous selections, showing the trip's path.



GEOFENCING

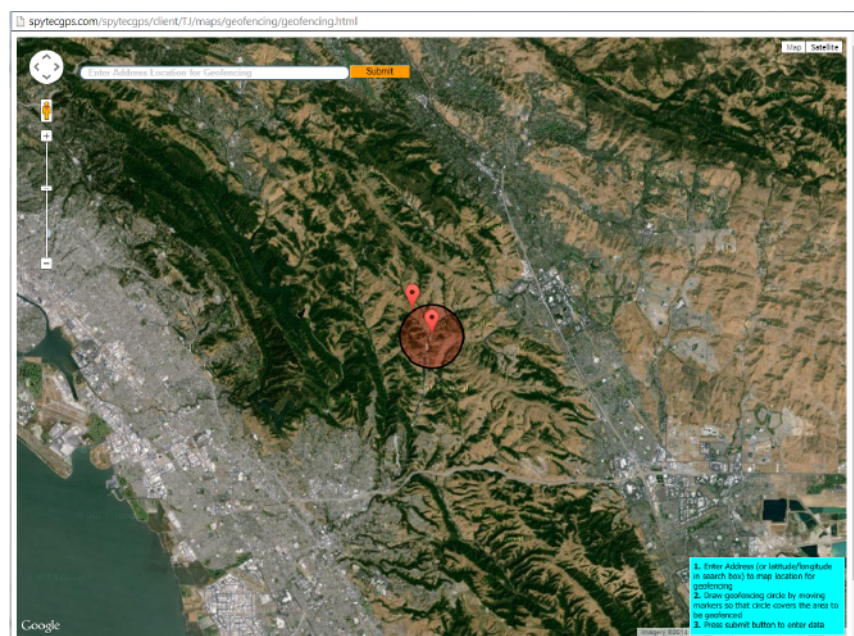
The Geofencing button opens a drop-down menu that includes the following options: Create Geofencing Area and View/Delete Geofences. The Geofences define parameters to which the assigned Driver/Vehicle is permitted to drive. If the Driver/Vehicle exits the parameters, an alert will be sent as specified in the CHANGE SETTINGS options. When using the drop down menus, click the option to access a pop up screen that allows for preference changes.

ACCOUNT INFORMATION
CHANGE SETTINGS
TRACK HISTORY
GEOFENCING
Create Geofencing Area
View / Delete Geofences
REPORT GENERATION

Create Geofencing Area

To create a Geofencing area, click on the Geofencing menu option and then click Create Geofencing Area from the drop-down menu. A pop-up with Real Time map will appear with instructions to the bottom right of the screen:

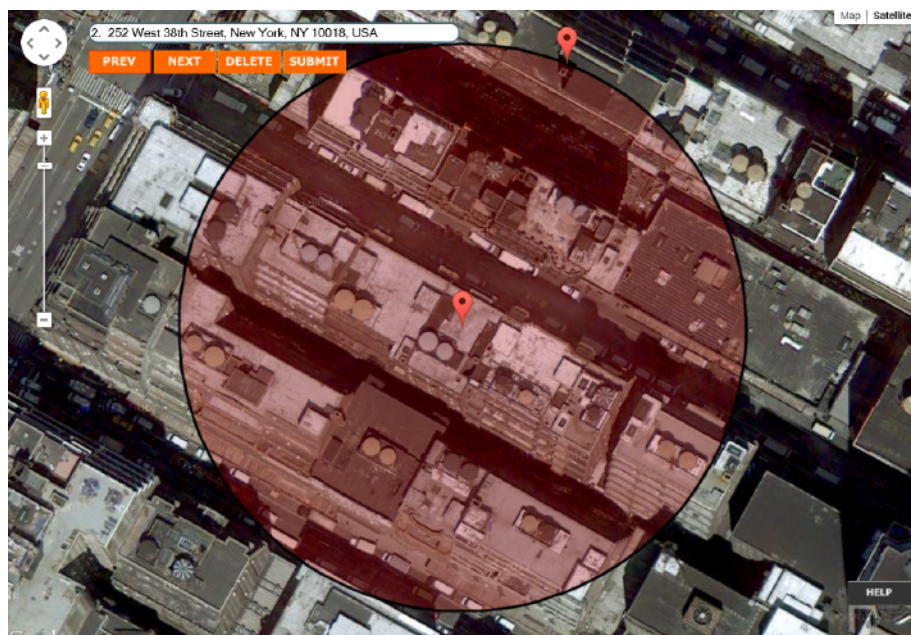
1. Enter Address (or latitude/longitude in search box) to map location for geofencing.
2. Draw geofencing circle by moving markers so that circle covers the area to be geofenced.
3. Press submit button to enter data.



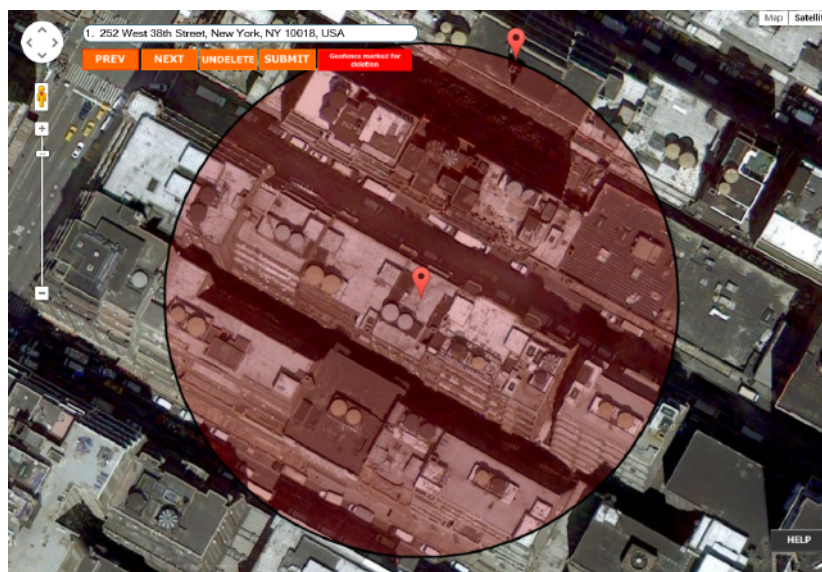


View / Delete Geofences

To view current Geofences, click on the Geofencing menu option and then click View/Delete Geofences from the drop-down menu. A pop-up will appear with the first Geofencing area. Use the PREV and NEXT buttons to navigate through Geofencing areas.

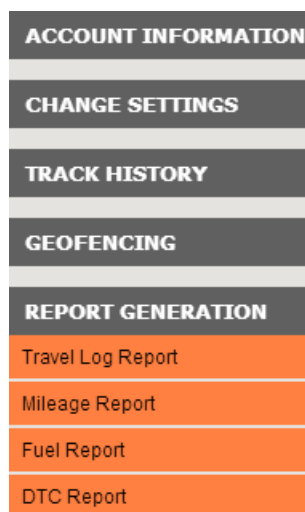


To delete a Geofence, click the red box to the right of the SUBMIT button. After clicking DELETE, click the SUBMIT button. The selected Geofence will be deleted and the Geofencing window will close.



REPORT GENERATION

The REPORT GENERATION button enables a drop-down menu with the following options: Travel Log Report, Mileage Report, Fuel Report and DTC Report. Click the option to access a pop up screen that allows for preference changes.



Travel Log Report

Clicking the Travel Log Report option will open a pop up that asks for dates of travel for which a detailed report will be generated according to Stops, Ignition On/Off, Movements or All of these maneuvers. Begin by entering a Start and End Date for the report.

Select Date Range And Data Points

☐ ALL

☐ STOPS ONLY

☐ IGNITION ON/OFF

☐ MOVEMENTS ONLY

SUBMIT

When selecting Date Ranges, a pop up calendar will appear. Click on the start and end date for each field.

Select Date Range And Data Points

November 2014

Su	Mo	Tu	We	Th	Fr	Sa
						1
2	3	4	5	6	7	8
9	10	11	12	13	14	15
16	17	18	19	20	21	22
23	24	25	26	27	28	29
30						

SUBMIT

Choose the corresponding radio button for All, Stops Only, Ignition On/Off or Movements only and click SUBMIT.

Select Date Range And Data Points

11/12/2014

11/26/2014

☐ ALL
☐ STOPS ONLY
☐ IGNITION ON/OFF
☐ MOVEMENTS ONLY

SUBMIT

Select the Driver/Vehicle for which the report is to be generated and click SUBMIT.

Select Driver

☐ Driver 1
☒ John Smith

SUBMIT

A pop up will appear with the Travel Log Report as indicated with given preferences in previous selections. Use the Print this page button in the top right of the window to print a report according to printer preferences in My Computer.

Print this page

TRAVEL LOG REPORT from 10/01/2014 to 10/08/2014 for Driver1									
Event Type	Date	Time	Latitude	Longitude	Battery voltage	Speed	Mileage	Direction	MAP IT
Engine Off	10/07/2014	14:35:04	34.139883	-118.370848	97	3.11	1684.28	N	[Map It]

Mileage Report

Clicking the Mileage Report option will open a pop up that asks for dates of travel for which a mileage report will be generated.

Select Date Range

Start Date

End Date

SUBMIT

When clicking in the Start and End Date fields, a pop up calendar will appear for selection of dates. Click the date for each field.

Select Date Range

11/12/2014

End Date

SUBMIT

November 2014

Su	Mo	Tu	We	Th	Fr	Sa
						1
2	3	4	5	6	7	8
9	10	11	12	13	14	15
16	17	18	19	20	21	22
23	24	25	26	27	28	29
30						

Once the dates are selected, click the SUBMIT button.

Select Date Range

11/12/2014

11/28/2014

SUBMIT

Select the Driver/Vehicle by clicking the corresponding radio button and then the SUBMIT button.

Select Driver

☐ Driver 1
☒ John Smith

SUBMIT

A pop up will appear with MILEAGE REPORT SUMMARY for indicated dates and driver/vehicle. A Print this page button is at the top left. Click the Print this page to print the report according to print preferences in My Computer.

Print this page

MILEAGE
REPORT
SUMMARY from
10/01/2014 to
10/08/2014 for
Driver1

START MILES	1684.28	START DATE	10/01/2014
END MILES	1750.16	END DATE	10/08/2014
MILES TRAVELLED	65.88	END DATE	10/08/2014

Fuel Report

The Fuel Report option will open a pop up with fields for start and end dates. Click in each field and a pop up calendar will appear. Click the date for start and end fields and then SUBMIT. Another pop up will then appear asking for Driver/Vehicle. Choose the radio button that corresponds to the driver/vehicle for which the report is to be generated.

Select Date Range

11/12/2014

11/28/2014

SUBMIT

Select Driver

☐ Driver 1
 ☒ John Smith

SUBMIT

A report will pop up giving fuel usage values for the times indicated as per the preferences given. Click the Print this page button to print the report according to printer preferences in My Computer.

Print this page

FUEL REPORT SUMMARY

from 10/01/2014 to 10/08/2014 for Driver1

START FUEL	START DATE	10/01/2014
END FUEL 0	END DATE	10/08/2014
FUEL USED (% of fuel tank capacity) 0	END DATE	10/08/2014

DTC Report

The DTC Report option will open a pop up with fields for start and end dates. Click in each field and a pop up calendar will appear. Click the date for start and end fields and then SUBMIT. Another pop up will then appear asking for Driver/Vehicle. Choose the radio button that corresponds to the driver/vehicle for which the report is to be generated.

Select Date Range

Start Date

End Date

SUBMIT

Select Driver

☐ Driver 1
☒ John Smith

SUBMIT

A report will pop up giving DTC values for the times indicated as per the preferences given. Click the Print this page button to print the report according to printer preferences in My Computer.

Print this page

DTC
REPORT
SUMMARY
FOR
Driver1
from
10/01/2014/
to
10/08/2014/

Event Type	Date	Time	Latitude	Longitude
------------	------	------	----------	-----------

BOTTOM BUTTONS

The buttons on the bottom of the screen enable many functions. The first (left) button is the REAL TIME button. The next is the TOGGLE MENU button, which hides or shows the toggle menu to the upper left of the screen. The SUPPORT button opens a Send a Message window that enables the user to send a message to the Tech Support staff at Spy Tec Inc. The LOG OFF button immediately allows the user to logoff and closes the map/real time view. The ONLINE MANUAL button links to the Online Manual (<http://www.spytecgps.com/help/help.htm>) and opens a new window with given GL300 device instructions.

REAL TIME

TOGGLE MENU

SUPPORT

LOGOFF

ONLINE MANUAL

CURRENT LOCATION

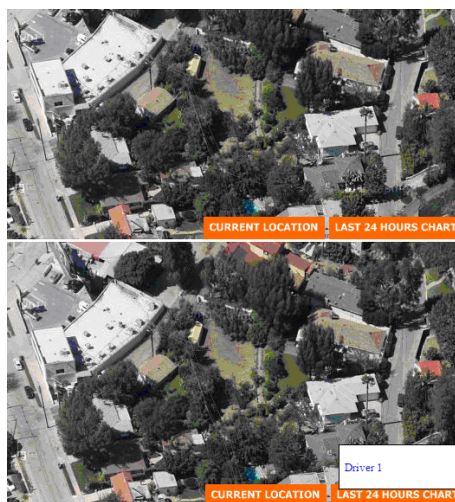
LAST 24 HOURS CHART

Real Time

The first (left to right) button enables a Real Time view of the locator on Google Earth. By pressing the Real Time button, a new tab or window will appear in your browser with a locator by GPS device location coordinates and Real Time view.



In the Real Time screen, there are two buttons at the bottom right of the screen for CURRENT LOCATION and LAST 24 HOURS CHART. The CURRENT LOCATION is a default setting when using the REAL TIME screen, whereas the LAST 24 HOURS CHART button will create a chart of GPS tracker whereabouts for the last 24 hours. Hover over the LAST 24 HOURS CHART button and then click on the Driver to receive a chart of whereabouts for the last 24 hours.



PRECAUTIONS

- Strictly observe relevant laws as this product cannot be used for any illegal purpose. The user is responsible for any legal matters.
- The maximum life of the battery will diminish if not used for a long time so recharge it before use or storage.
- Do not adjust settings or placement while driving.

FREQUENTLY ASKED QUESTIONS (FAQs)

How do I unfreeze the device?

Turn the power off and restart the device.

Why is there unexpected interference?

During a time of interference, the left light (blue) will begin blinking. This means that no wireless signal is available and the device is searching for a new signal.

What is the battery life?

The battery lasts up to 14 days, but with greater activity the battery life will be less.