

Meicheng[®]

Multimedia Recorder

DSS-R-CL1100

Manual V2.0.29.1TW

Meicheng Audio Video Co., Ltd.

www.meicheng.com.tw

TABLE OF CONTENTS

CHAPTER 1 PRODUCT OVERVIEW.....	2
1.0 PRODUCT INTRODUCTION.....	2
2.0 FEATURE AND SPECIFICATION	2
3.0 PANEL LAYOUT	4
4.0 POWER ON AND RUNNING	4
CHAPTER 2 QUICK USER GUIDE.....	5
1.0 MODIFY IP ADDRESS	5
2.0. PREVIEW.....	7
3.0. QUICK RECORDING.....	9
4.0 PLAY ON DEMAND/DOWNLOAD FILE.....	9
CHAPTER 3 INSTALLATION AND CONFIGURATION.....	10
1.0 SYSTEM INFORMATION	10
2.0 PARAMETERS SETTING.....	10
3.0 RECORD	14
4.0 FILE MANAGEMENT	15
5.0 CONFIGURATION	15
6.0 SYSTEM RESTART.....	17
7.0 USER MANAGEMENT.....	18
CHAPTER 4 WMS - WINDOWS MEDIA SERVER (OPTIONAL)	21

Chapter 1 Product Overview

1.0 Product Introduction

As new generation visual information recording and transmission equipment, characterized by compact size and portability, it integrates the input interfaces of video, audio and DVI signals, supporting random combined recording of one-way DVI or VGA signal, one-way video and one-way audio signal. The recorded file is saved in single-flow mode. It supports the synchronous recording of the video, audio and computer screen signals, thus satisfying the users' needs of recording and playing the visual information in meeting, training and teaching.

2.0 Feature and Specification

2.0.1 Feature


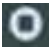
- Simultaneously record VGA/DVI, Video and Audio to a single “ASF” file
- Support 30 frames encoding of high-definition video signal 720p/1080i/1080p
- Maximum number of users that can simultaneously preview online is 5; Support FTP upload (optional function)
- Support 30 frames encoding of maximum 1400 X 1050 VGA signal
- Support WMV3/WMA, H264/AAC voice encoding algorithm. Frequencies of 44.1KHz/48KHz and bandwidths of 32kbps~256kbps are adopted
- Support serial port operation and control
- Support Chinese and English OSD
- Support 8 picture display modes (POP / PIP). Upload photo in JPG format to enrich the recorded material in POP mode.
- Web interface, Panel display, RS -232 Serial interface, third party control (ex. AMX and Crestron)
- Compliant with VISCA, control Video Conference CCD Camera via web interface (up/down, right/left, zoom in/out, automatic focus)
- WMS Address: Windows Media Server's media server address. Click [Turn On] and send the signal collected by the DSS-R-CL1100 Multimedia Recorder to the Media Server.

2.0.2 Specification

Item	Technical Index
Definition	720p, 1080i 1080p; 640*480, 800*600, 1024*768, 1280*1024
Frame rate	1-30 frame/second
Input Signal	Analog VGA / digital DVI-I; RCA composite analog video; analog S-Video; RCA analog audio; 1/4" TRS audio
Loop output	15-pin D model interface (Female)
Network interface	10/100/1000Mbps Ethernet interface (RJ45)
Control interface	Web interface, Panel display, RS-232 Serial interface, third party control (ex. AMX and Crestron)
Video Bit rate	128 kbps to 20,000 kbps
Access control	Support multilevel user access authority control
Software upgrade	Supported
Capacity	Built-in 500GB HDD
File Format	ASF
Storage temperature	-20~60°C
Relative humidity	5%~95%
Working temperature	0~45°C
Dimensions (L*W*H)	350 * 270 * 60 mm
Net Weight	4.8 kg
Packing Dimensions (L*W*H)	490 * 413 * 215 mm
Gross Weight	7.6 k
Power Supply	AC 100~240V/ 50~60Hz
Power Consumption	100W
Preview online	DSS-R-CL1100: 5 ; FTP Configuration
WMS (Windows Media Server)	Optional function (DSS-R-CL1100 Multimedia Recorder will transmit the recorded file automatically to FTP server, as soon as the recording completed)

3.0 Panel Layout

3.0.1 Front Panel

As shown in the figure below, press  on the front panel of Multimedia Recorder and the unit begins recording. If you want to stop it, press .



3.0.2 LED

Name	Description
POWER	it will be ON during normal power-on
RUN	it will be ON when the system is running
LAN	it will be ON when there is network connection
LCD	it will display the operating status and relevant information during operation

3.0.3 Rear Panel

As shown in the rear view of the integrated Multimedia Recorder, you only need to connect the signal cables to the corresponding ports.



4.0 Power on and Running

In normal situation, power on the equipment after connecting the power cable to the corresponding port at the rear panel, the LCD panel will display “Starting...”. Wait for 1 minute, when the Multimedia Recorder starts up automatically, the LCD panel will display the current input definition, serial number, IP address, and other relevant information.

Chapter 2 Quick User Guide

1.0 Modify IP Address

1.0.1 Identify IP Address

LCD at the front panel shows IP address and subnet mask.

1.0.2 Modify IP Address

Reset computer Internet Protocol (TCP/IP).

- 【Start】 → 【Control Panel】 → 【Network Connections】
- right click 【Local Area Connection】 → 【Properties】
- select 【Internet Protocol(TCP/IP)】 → 【Properties】
- select 【Use the following IP address】

Entering an IP address (ex: 60.251.158.59; 60.251.158.61), and the same subnet mask and gateway as Multimedia Recorder.


Default value of the Multimedia Recorder:


- IP address: 60.251.158.58
- Subnet Mask: 255.255.255.0
- Gateway: 60.251.158.254

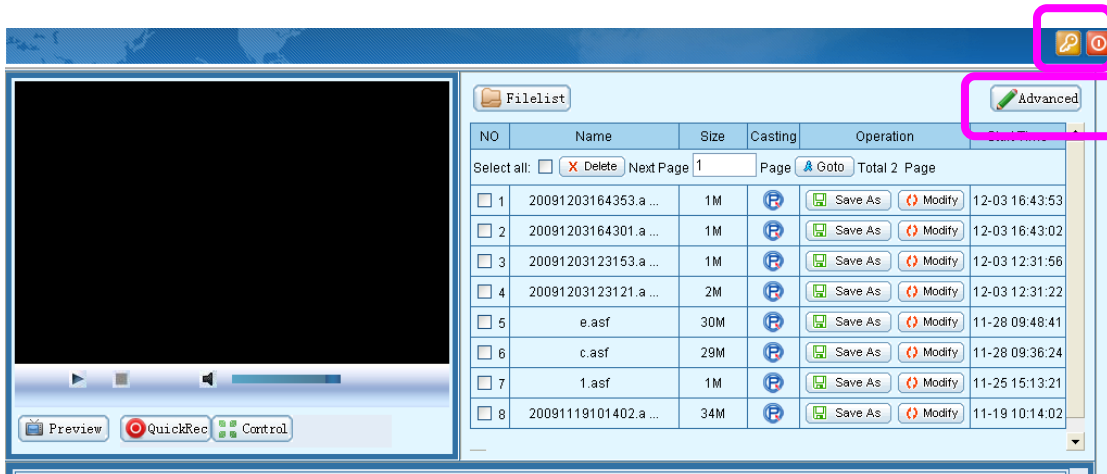
Open IE browser, type in the IP address **60.251.158.58** in the address field, and then press Enter. Please enter a correct user name and password in the authentication box and logon to the management interface of the Multimedia Recorder.

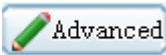
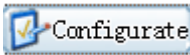


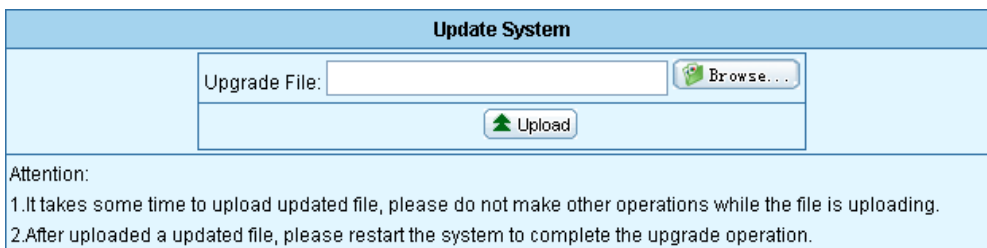
The default user name and password are both **[admin]**.

Logout: After you logon to the system, if you click  on the page, you will be logged out of the system management or client interface. And your logout will not affect the operation of the server, and the current working information of the server will be provided as soon as you logon to the system next time.

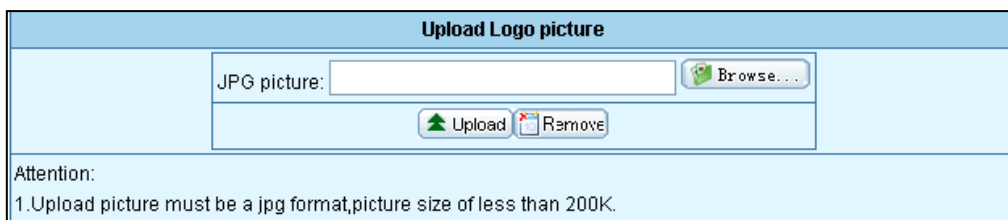
Re-login: if you click  at the top of the page, you will be brought back to the system logon interface.



Click  on the page, and click  the server's system settings can be viewed. The system software version's upgrade operation



After uploading LOGO (JPG format), the uploaded logo image can be seen in the POP display mode. Suggested JPG file resolution is shown as below. (Please refer to page 11 for more details)



- 1. D1 (large) : logo resolution 753 x 304
- 2. CIF (medium) : logo resolution 535 x 730
- 3. QCIF (small) : logo resolution 266 x 946

IP Address Modification	
LAN	
IP Address:	<input type="text" value="60.251.158.58"/>
Subnet Mask:	<input type="text" value="255.255.255.0"/>
Gateway:	<input type="text" value="60.251.158.254"/>
<input type="button" value="Modify"/>	

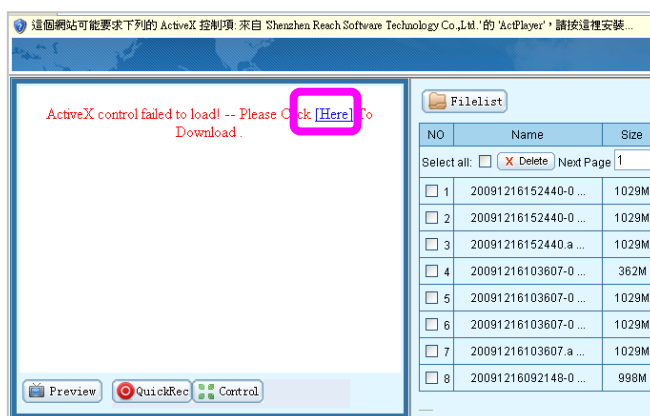
After entering valid IP address, subnet mask and default gateway, click .

The new IP address will take effect after the server restarts.

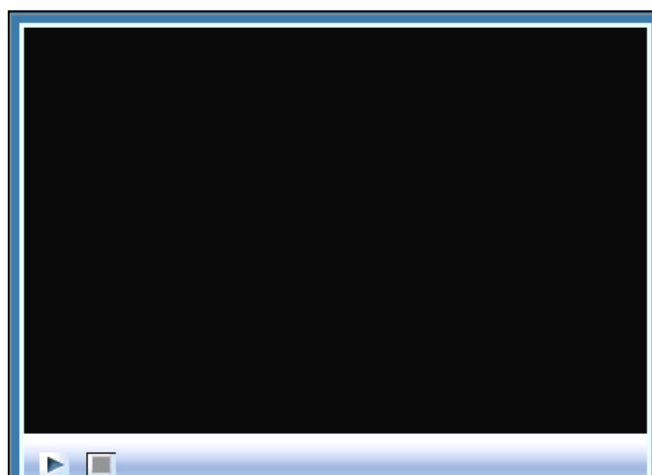
2.0. Preview

2.0.1 Plug-in Installation

If you have never installed this monitoring software to your computer, the system will prompt you to install it after you logon to Multimedia Recorder interface. As shown in the following figure:

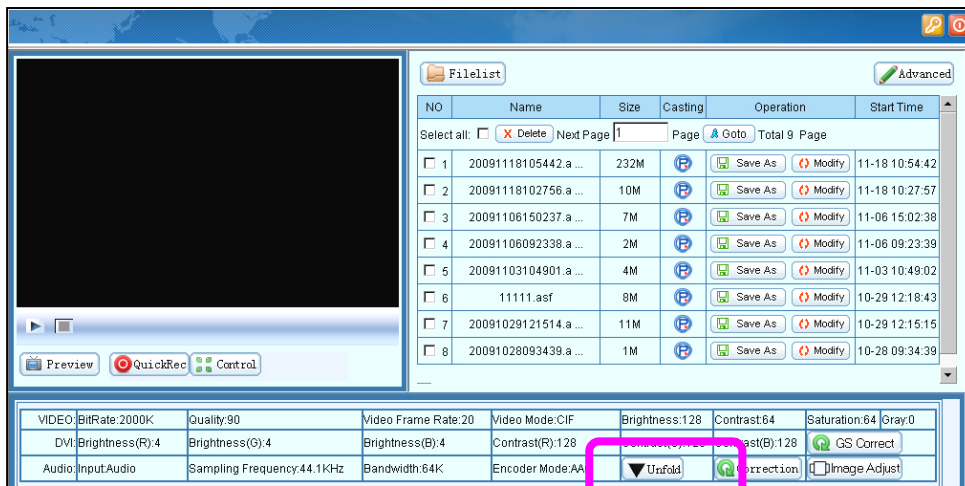



Check **[Here]** to install the software, and then the video window will be like this after the installation.

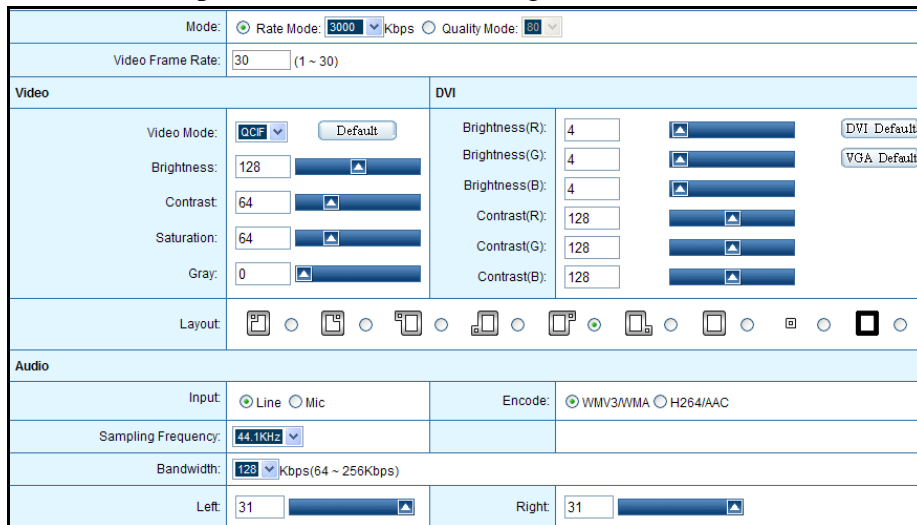


2.0.2 Interface Layout

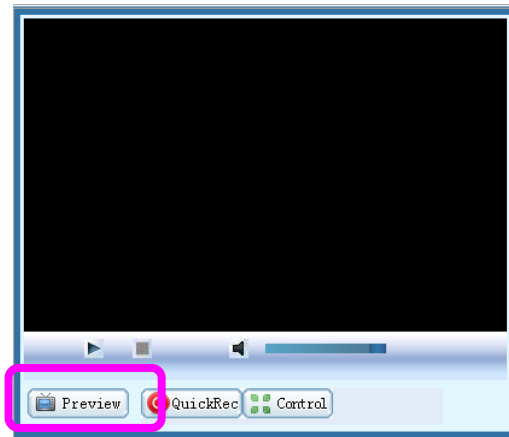
The default interface of the Multimedia Recorder will be displayed after installation of the plug-in software. The left upper section is the video play control field. The right upper section is the file list play and download field. The bottom section is the parameter view and setting field.



Click , in the parameter view and setting field will be shown as below.





Instant viewing is available by clicking [Preview].



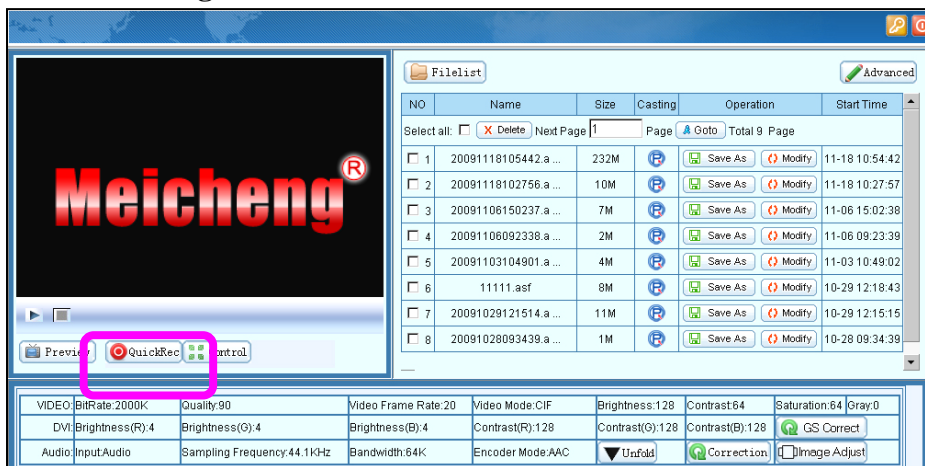
3.0. Quick Recording




3.0.1 LCD Panel Quick Recording

As shown in the figure below, press upper button  on the front panel of Multimedia Recorder and the unit begins recording. If you want to stop it, press lower button . This function is very convenient, for it can record easily even if Multimedia Recorder is not connected to the network.




3.0.2 WEB Recording Mode



Click , then the current state of recorded documents will display at the right section of the page. Click  Stop /  Pause when recording, you can stop or pause recording. After the recording is stopped, the file will be immediately generated and be played on demand online. **NOTE:** The system will automatically cut file when it reach to about **3GB** (when video bit rate is 3000kbps, the file will be about **150 minutes**.) The higher the bit rate, the better the quality video.

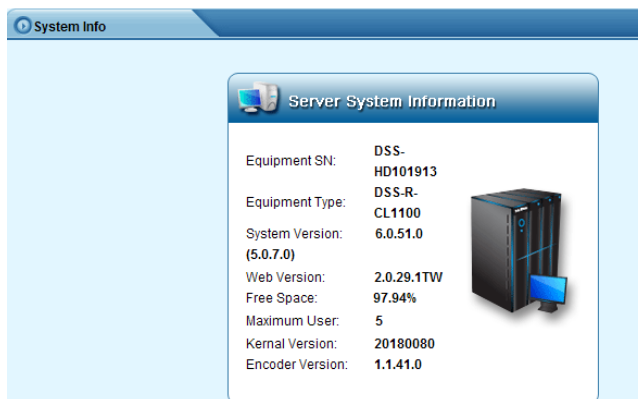
4.0 Play on Demand/Download File

To online play on demand the files stored in the server, click . The system will automatically call the player to play the file. If you need to download the file stored in the server, click the [Save as] button, and then select the local disk path and the file name in the “File saved as...” dialog box.

Chapter 3 Installation and Configuration

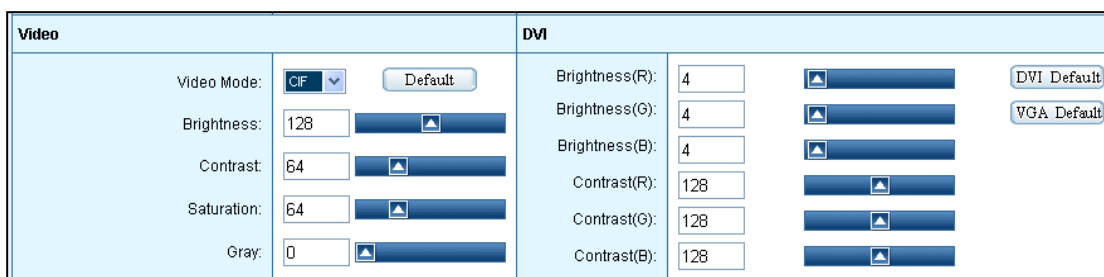
1.0 System Information

Click the [Advanced] button on the home page, and then the server's system information can be viewed on the prompted new page.



2.0 Parameters Setting

2.0.1 Parameters Setting (Adjust parameters and click [Save])



Video

- Video Mode: D1/CIF/QCIF
- Brightness: adjust the brightness of video
- Contrast: adjust the contrast of the video
- Saturation: adjust the saturation of the video
- Gray: adjust the gray of the video
- Default: recover the configured parameters back to the default setting

DVI

- Brightness (R): adjust the red brightness of the input signal
- Brightness (G): adjust the green brightness of the input signal
- Brightness (B): adjust the blue brightness of the input signal
- Contrast (R): adjust the red contrast of the input signal
- Contrast (G): adjust the green contrast of the input signal
- Contrast (B): adjust the blue contrast of the input signal
- DVI Default: recover the configured parameters back to the default DVI setting (this option is recommended if the input is DVI video signal)
- VGA Default: recover the configured parameters back to the default VGA setting (this option is recommended if the input is analog VGA signal)

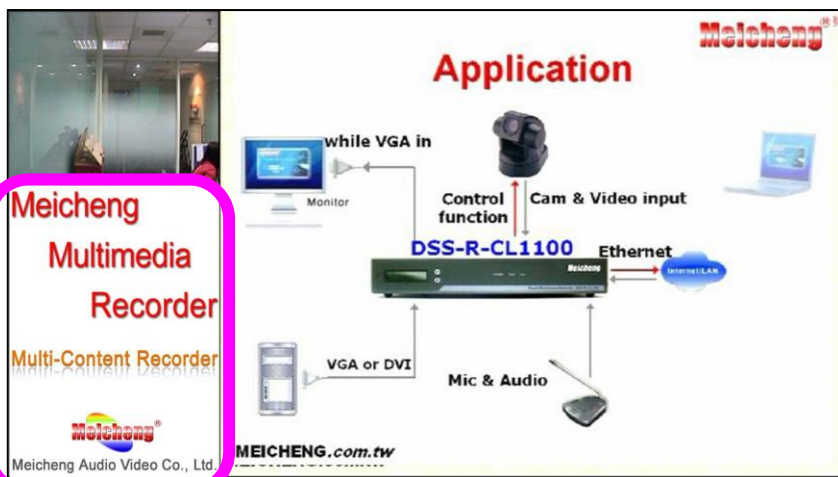
Video Mode: D1 (large) / CIF (medium) / QCIF (small)

Ps. the following suggested logo resolution is based on VGA resolution 1024 x 768



1. D1 (large)

Suggested logo resolution
753 x 304



2. CIF (medium)

Suggested logo resolution
535 x 730



3. QCIF (small)

Suggested logo resolution
266 x 946

2.0.2 Video Bit Rate Setting

Display the current video mode setting information, as shown in the following figure, the higher the bit rate, the better the quality video.

Mode:	<input type="radio"/> Rate Mode: 4000 Kbps	<input checked="" type="radio"/> Quality Mode: 90
Video Frame Rate:	30 (1 ~ 30)	

- Rate Mode: 128 ~ 20000kbps
- Quality Mode: 10 ~ 90
- Video Frame Rate: 1 ~ 30

2.0.3 Audio Parameters Setting

Display the current audio parameter setting information, as shown in the following figure:

Audio			
Input:	<input checked="" type="radio"/> Line <input type="radio"/> Mic	Encode:	<input checked="" type="radio"/> WMV3/WMA <input type="radio"/> H264/AAC
Sampling Frequency:	44.1KHZ		
Bandwidth:	128 Kbps(64 ~ 256Kbps)		
Left:	31	Right:	31

- Input mode settings: Line / Mic
- Encoding Mode: WMV3/WMA, H264/AAC
- Sampling Frequency: 44.1KHZ/48KHZ optional
- Bandwidth: to adjust the audio, 64 ~ 256Kbps optional
- Left: adjust the volume of the left channel
- Right: adjust the volume of the right channel

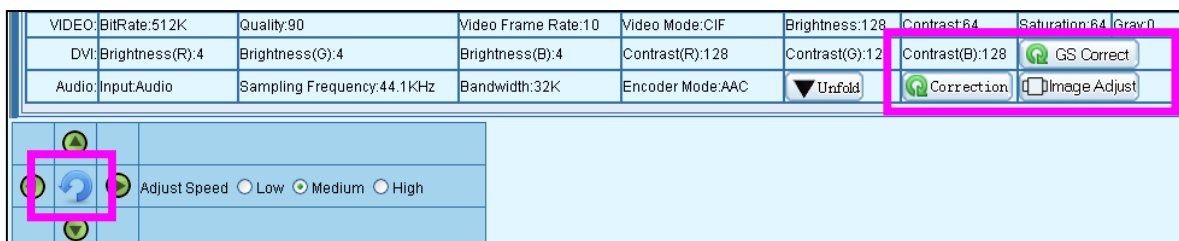
2.0.4 Layout Setting

Display the current image layout setting information, as shown in the following figure: Users can select the appropriate layout based on demand.


Layout:	 <input type="radio"/>	 <input type="radio"/>	 <input type="radio"/>	 <input type="radio"/>	 <input type="radio"/>	 <input type="radio"/>	 <input type="radio"/>	 <input type="radio"/>	 <input type="radio"/>	 <input checked="" type="radio"/>
---------	---	---	---	---	---	---	---	---	---	--

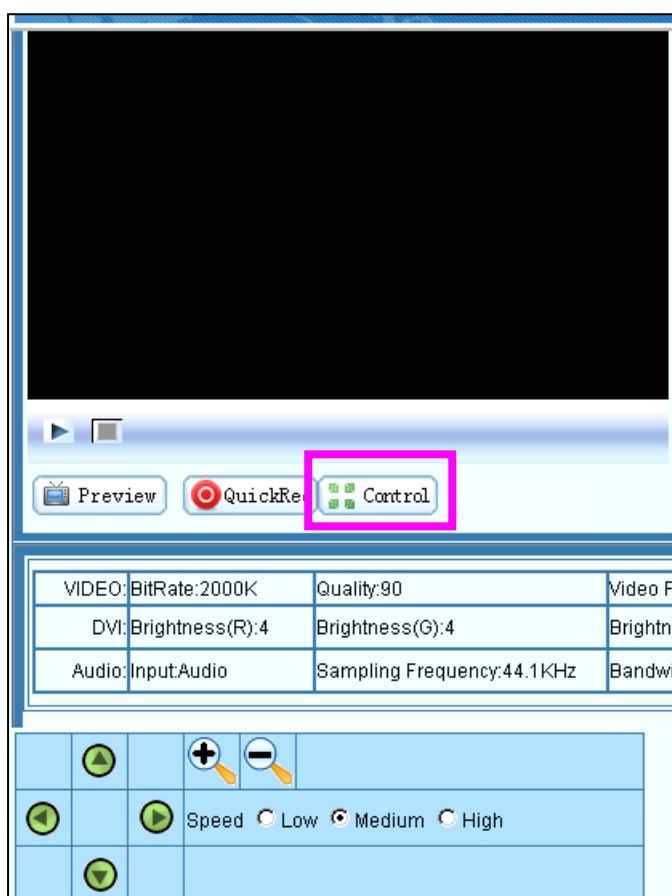
2.0.5 Image Adjust

As shown in the figure below, press  to correct green screen of VGA source. Click  for adjusting color of VGA source.



2.0.6 Control



As shown in the figure below, press  to control video source viewing position or direction including up/down, right/left, zoom in and zoom out.



3.0 Record


3.0.1 LCD Panel Quick Recording



As shown in the figure, press  on the front panel of Multimedia Recorder, the unit begins recording. If you want to stop it, press . This function is very

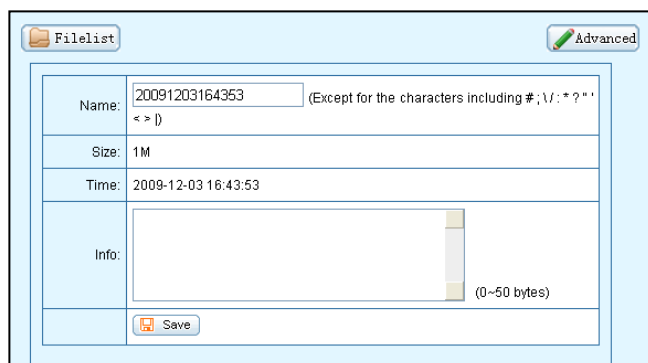
convenient, for it can record easily even if Multimedia Recorder is not connected to the network.

3.0.2 WEB Recording Mode

Click , then the current state of recorded documents will display at the right of the page.



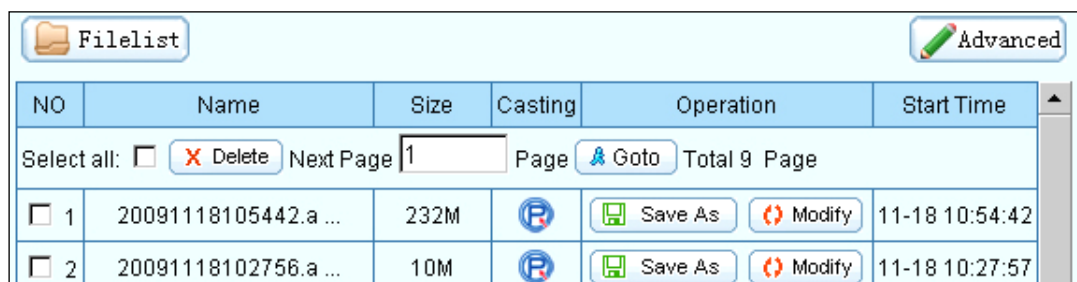
For all the file lists, file names and file sizes stored in the Multimedia Recorder, to modify the file name or the description information of the file, just click the [Modify] button and then modify the related information in the prompted modification dialog box (including the modified file names and file details, etc.), as shown in the following figure:



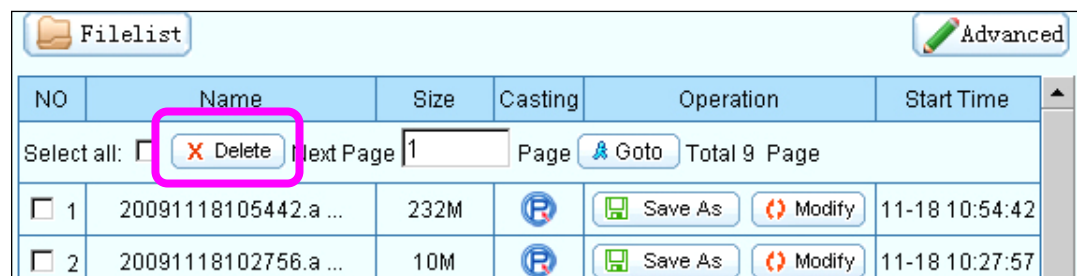
4.0 File Management

4.0.1 File List

All the file lists are displayed in the upper right of the main interface. In this dialog box, you can view the file information and perform such operations as renaming files, playing on demand files, downloading files, and deleting files, as shown in the following figure:



To delete the file stored in the server, please select the file in the list, click , and then click [OK] in the prompted confirmation dialog box. **NOTE:** can't recover after delete.



5.0 Configuration


5.0.1 Language

Set the system display language.

Language	
Language:	<input checked="" type="radio"/> English <input type="radio"/> Traditional Chinese
	<input type="button" value="Save"/>

5.0.2 Authority

Maximum number of users that can simultaneously preview and download online is 5.



Authority	
Authority	<input checked="" type="checkbox"/> Download <input checked="" type="checkbox"/> Casting
	 Save
Attention: Recorded files will be automatically authorized to user, if you choose the option.	

5.0.3 Multicast Management

Turn On / Turn Off the multicast function. Multicast Content can't be viewed via INTERNET. It's available over Intranet because it's point to point service.


Multicast Address: 234.3.4.5

Multicast Port Number: 11000

Multicast Switch			
Multicast Address	Multicast Port Number	Multicast Content	Operation
<input type="text" value="234.4.5.6"/>	<input type="text" value="11000"/>	<input checked="" type="checkbox"/>  V1 <input checked="" type="checkbox"/>  Audio	<input type="button" value="Turn on"/>

5.0.4 PTZ Protocol Upgrade

Unless it's necessary, please do not update PTZ Protocol.

PTZ Protocol Upgrade	
Upgrade File:	<input type="text"/>  Browse...
<input type="button" value="Upload"/>	
Attention: 1. INI files for the agreement document. 2. After uploaded a updated file, please restart the system to complete the upgrade operation.	

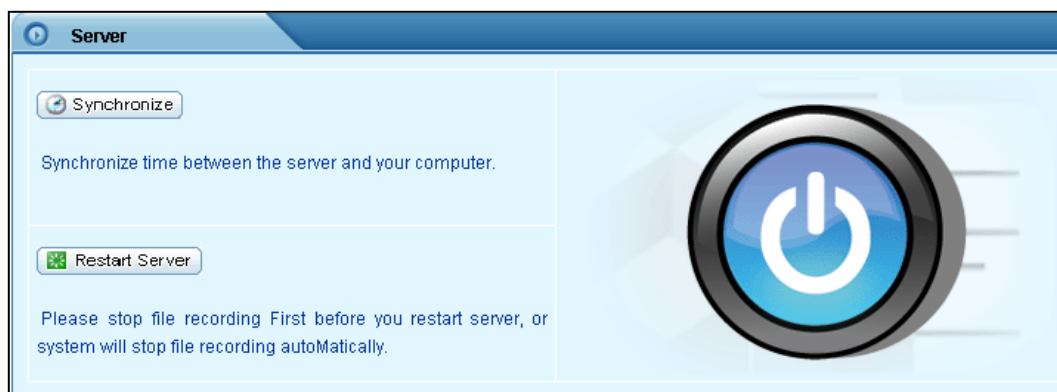
5.0.5 FTP configuration

Type in FTP server’s IP address, port, username and password, and choose [allow to upload]. After you active this function, the system will transmit the recorded file automatically to FTP server, as soon as the recording completed.

FTP configuration	
Server upload address:	<input type="text" value="60.251.158.111"/>
Server port:	<input type="text" value="21"/>
Username:	<input type="text" value="mei"/>
Password:	<input type="password" value="•••••"/>
Allow to upload:	<input checked="" type="checkbox"/>
Attention: FTP server need to support client passive mode to upload the file.	

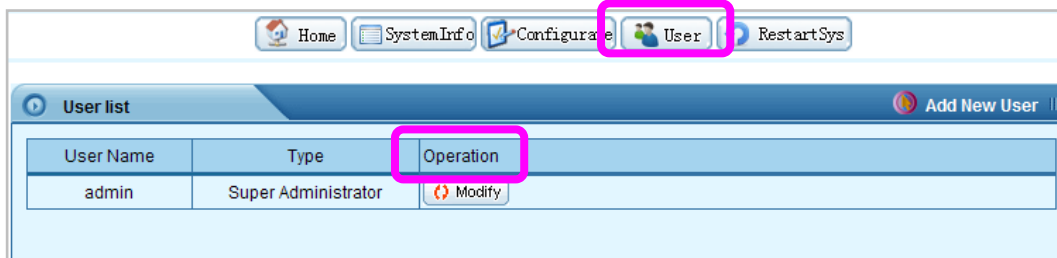
6.0 System Restart

Stop file recording first before restarting server, or system will stop file recording automatically.

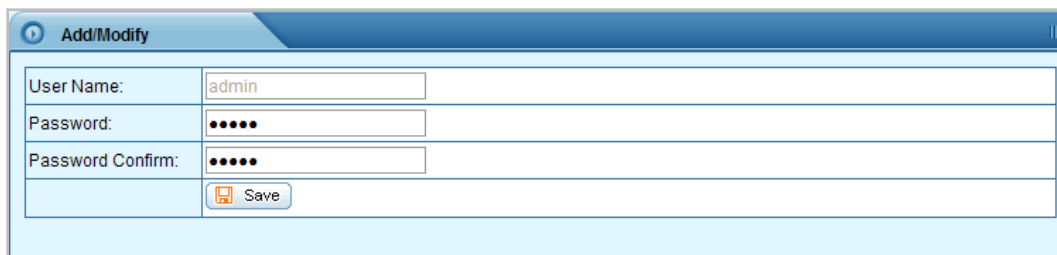


7.0 User Management

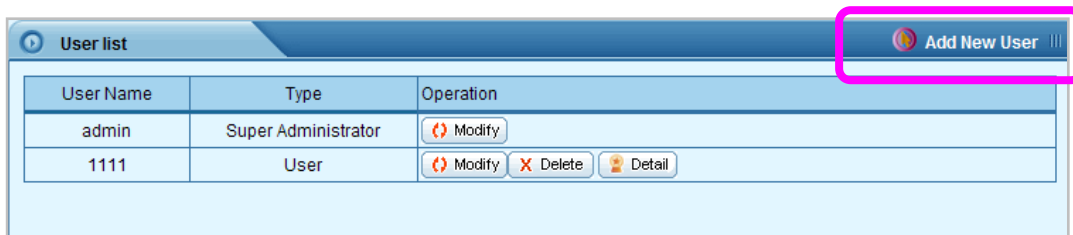
7.0.1 Modify password



Change password: Designated user’s system login password can be easily changed by clicking [Modify] button.



7.0.2 Add new user



Click [Add new user], enter the user’s name and password, and then click [Save]

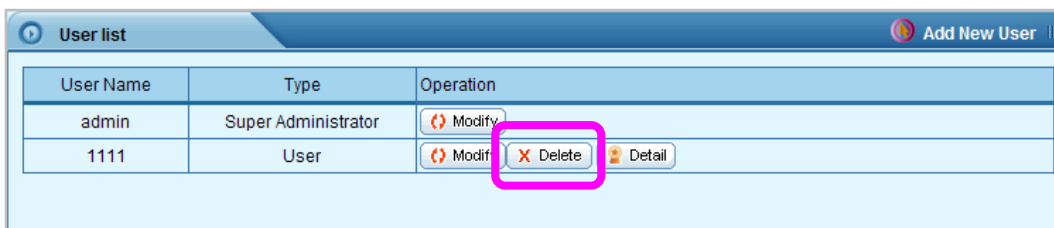
7.0.3 User authorities

The administrator may authorize the common user to play on demand or download files at any time. Click [Detail] button to view all the files stored in the server, and select and set the related play on demand / download authorities in the list.



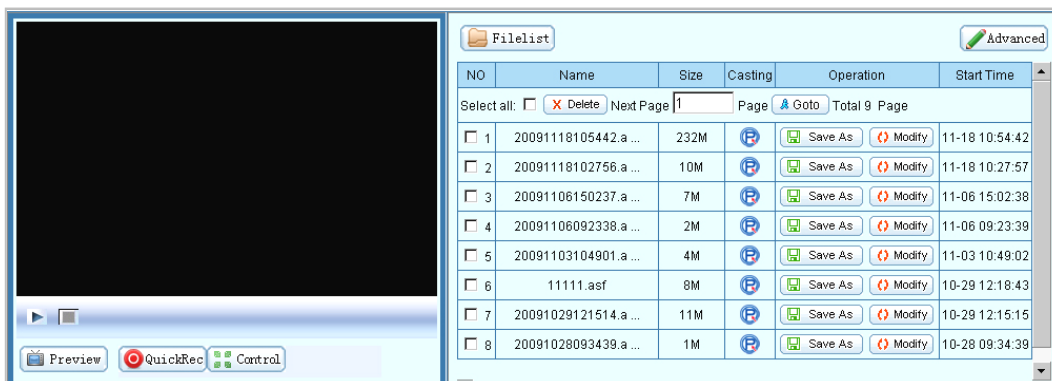
7.0.4 Delete user

In the user list dialog box, click the corresponding user and select [Delete] button, and then click [OK] in the prompted confirmation dialog box. **Note:** The default super administrator “admin” user cannot be deleted.



7.0.5 Other user

After login, general user can preview and download the recorded files which are authorized by Super Administrator.

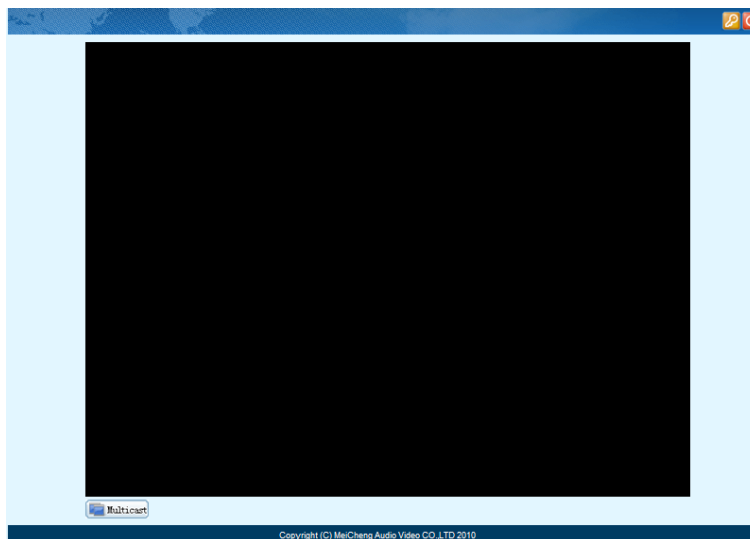


7.0.6 Guest user (This function will be temperately disable.)

Both user name and password are [guest].



Click [Multicast] to preview data. Multicast Content can't be viewed via INTERNET. It's available over Intranet because it's point to point service. **NOTE: Broadcast function will require more bandwidth and transmit data among members in local area network.**



NOTE: Guest can only view multicast after administrator turn on the function.

Multicast Switch			
Multicast Address	Multicast Port Number	Multicast Content	Operation
<input type="text" value="234.4.5.6"/>	<input type="text" value="11000"/>	<input checked="" type="checkbox"/> V1 <input checked="" type="checkbox"/> Audio	<input type="button" value="Turn on"/>

Chapter 4 WMS - Windows Media Server (Optional Function)

Thank you for purchasing DSS-R-CL1100 Multimedia Recorder. Please read this document in detail so that you can understand and implement the required function of the system.

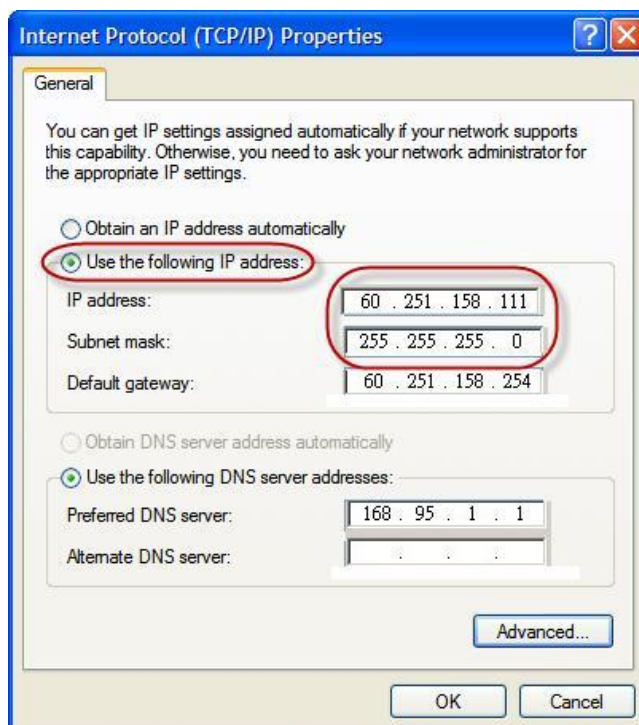
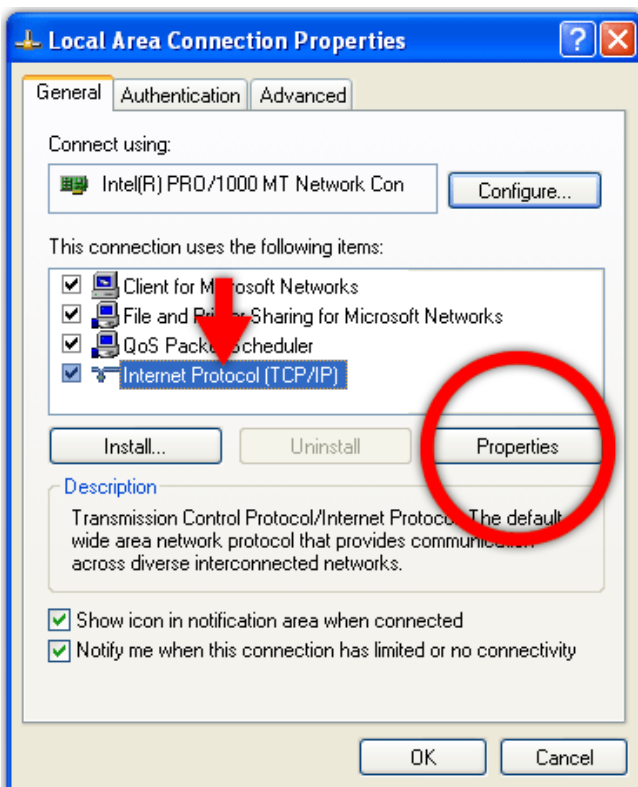
WMS Address: Windows Media Server's media server address. The text of User Name and Password keep nil. Click [Turn On] and send the signal collected by the DSS-R-CL1100 Multimedia Recorder Server to the Media Server.

[Modify Media-Server IP Address]

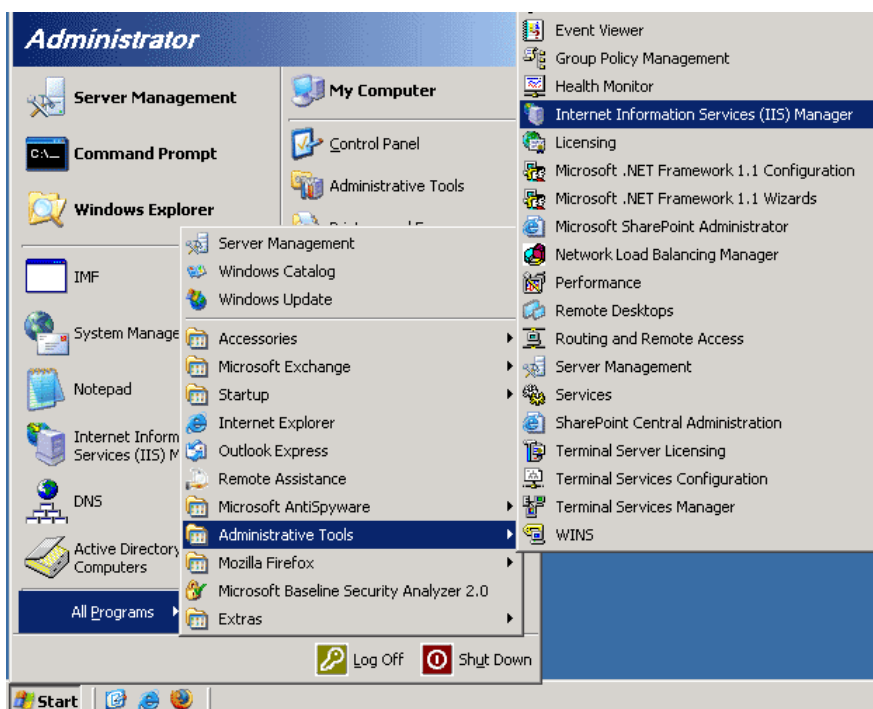
1. Media-Sever

(1) Reset computer Internet Protocol (TCP/IP).

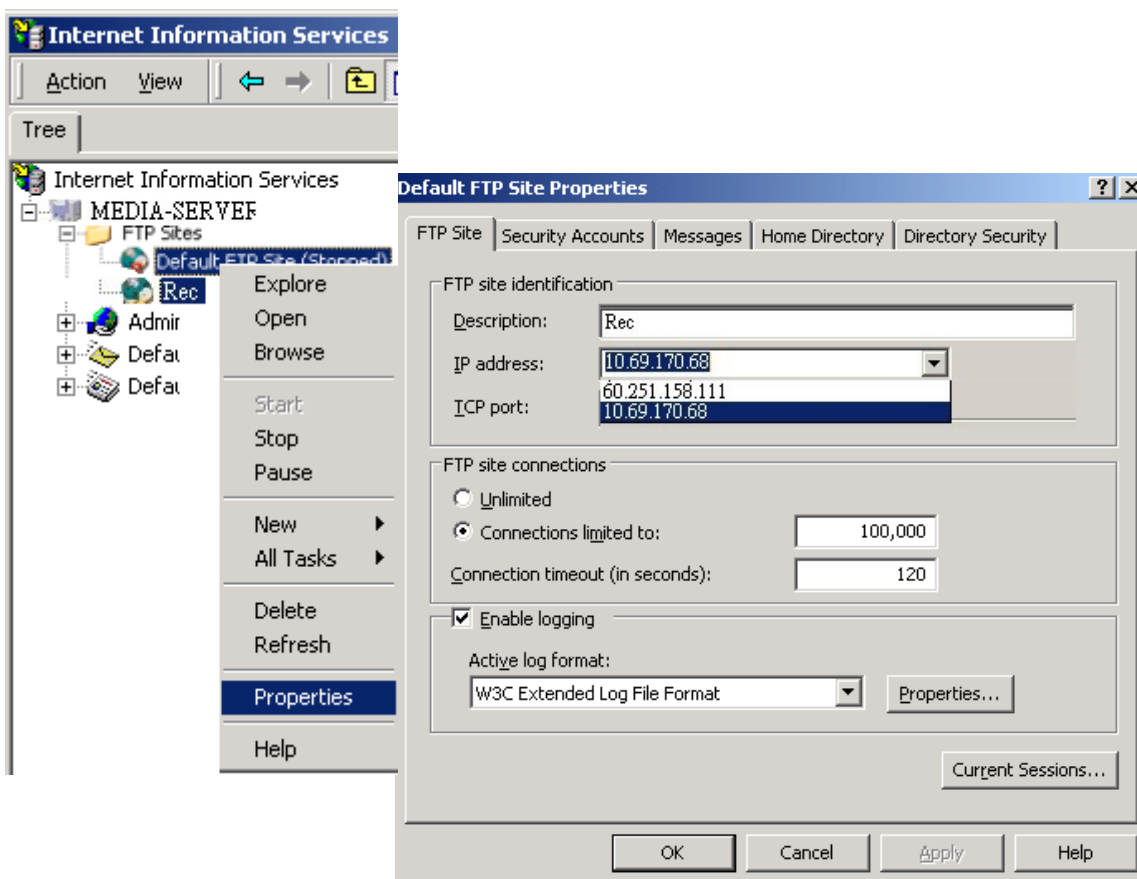
- 【Start】 → 【Control Panel】 → 【Network Connections】
- right click 【Local Area Connection】 → 【Properties】
- select 【Internet Protocol(TCP/IP)】 → 【Properties】
- select 【Use the following IP address】
 - ✓ IP address: 60.251.158.111
 - ✓ Subnet Mask: 255.255.255.0
 - ✓ Gateway: 60.251.158.254



(2) Enter IIS to modify FTP IP Address



Right click [FTP] → [Rec] → [Properties]



2. DSS-R-CL1100 Multimedia Recorder

(1) Modify [WMS Address]

(2) Modify [FTP Configuration] server upload address

WMS Manager			
WMS Address	User Name	Password	Operation
http://60.251.158.111:6066/meicheng			Turn on

Language	
Language:	<input checked="" type="radio"/> English <input type="radio"/> Traditional Chinese
Save	

Multicast Switch			
Multicast Address	Multicast Port	Multicast Content	Operation
234.3.4.5	11000	<input checked="" type="checkbox"/> V1 <input checked="" type="checkbox"/> Audio	Turn off

FTP configuration	
Server upload address:	60.251.158.111
Server port:	21
Username:	mei
Password:	*****
Allow to upload:	<input checked="" type="checkbox"/>
Attention: FTP server need to support client passive mode to upload the file.	

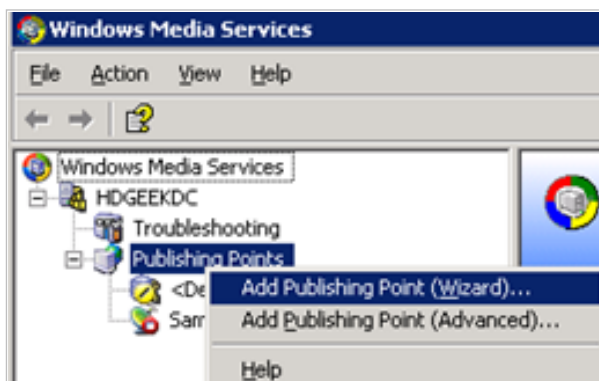
Note: before clicking the [Turn On] button, please make sure if the Windows Media Service server is configured well and if the site release parameters are correct.

Brief Introduction to WMS Parameter Settings

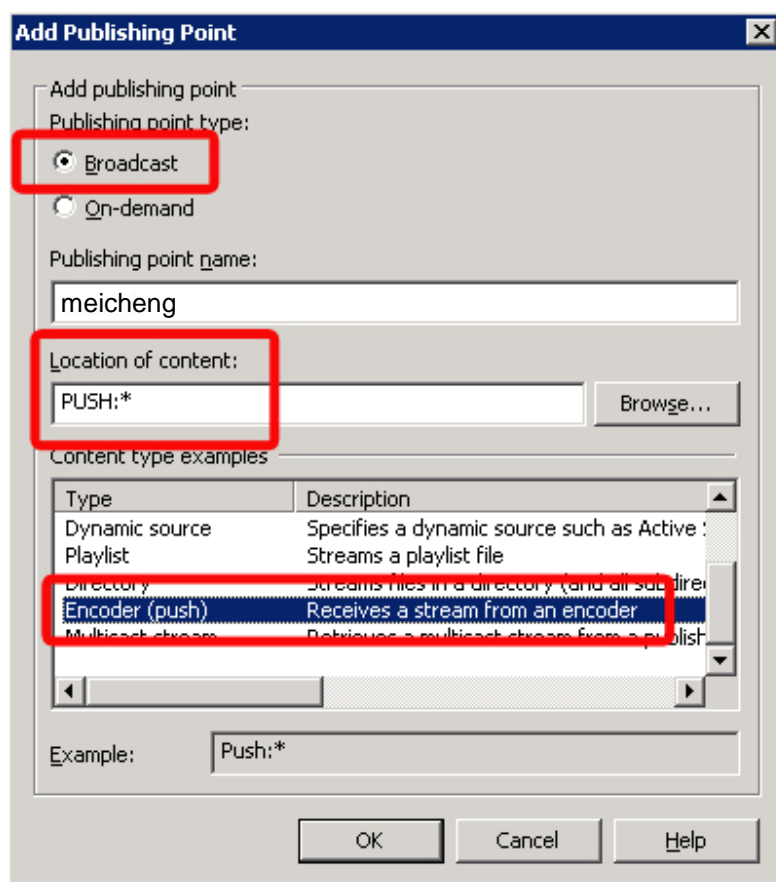
(1) Add release site on the Windows Media Server: [Start Menu] -> [All Programs] -> [Administrative Tools] -> [Windows Media Services]



(2) Right-click on [Publishing Points] on the left menu -> [Add a Publishing Point (Advanced)]



(3) Set publishing point parameter



[Publishing point type]: Broadcast

[Publishing point name]: meicheng (it should be the same with we set in

DSS-R-CL1100 Multimedia Recorder), here is meicheng

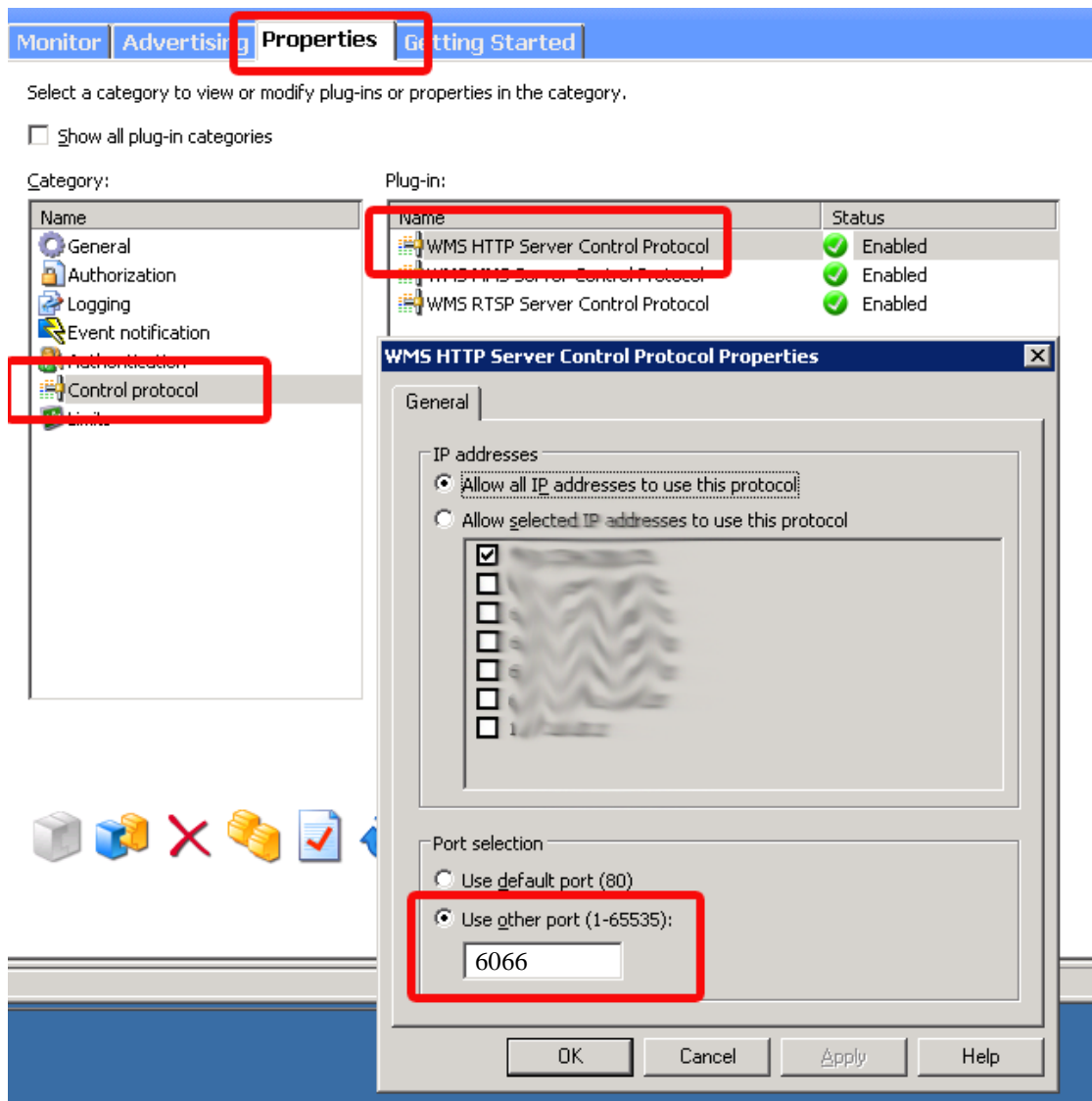
[Location of content]: must be **PUSH:***

[Content type examples]: choose Encoder (push) in.

Click OK.

(4) Set WMS port and user authority

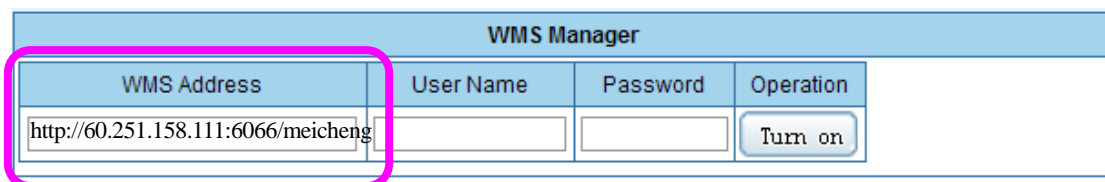
Click Properties, Control protocol, set the parameters of WMS HTTP Server Control Protocol, set the port here **6066** (it should be the same with we set in DSS-R-CL1100 Multimedia Recorder)



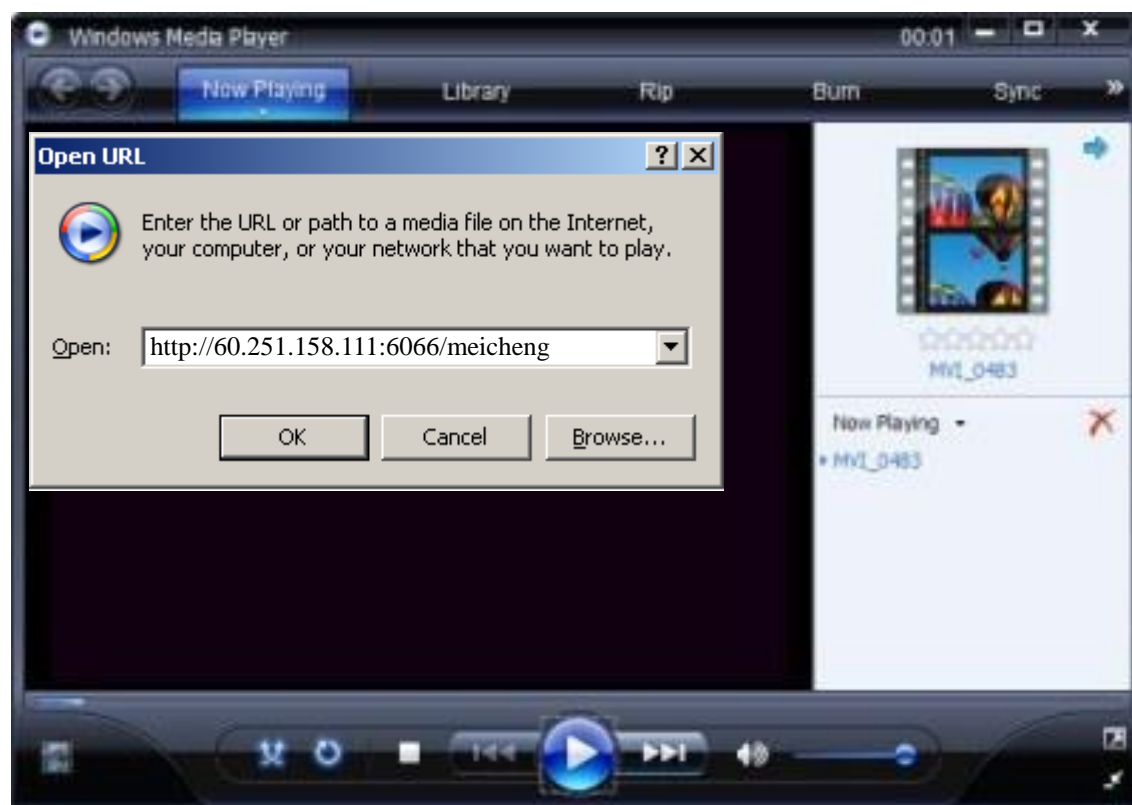
Note: after changing any parameters of DSS-R-CL1100 Multimedia Recorder signal source, the receiving client is required to reconnect the connection with the media server. For the client receiving, it is recommended to use versions above Windows Media Player 10. Signal collection does not support 1080i!

(5) Windows Media Server's media server address:

http://servers IP address:6066/meicheng



(6) Use MediaPlayer to view content.



Note: after changing any parameters of DSS-R-CL1100 Multimedia Recorder Server signal source, the receiving client is required to reconnect the connection with the media server. For the client receiving, it is recommended to use versions above Windows Media Player 10. Signal collection does not support 1080i!

The following items are contained in shipping carton:

1. DSS-R-CL1100 x1
2. Power Cable x1
3. RS-232 Cable x1
4. DVI Cable (male/male) x1
5. DVI (female) to VGA (male) adapter x1
6. LAN Cable x1
7. RCA Audio Cable x1
8. RCA/3.5mm Audio Cable x1
9. User Manual x1
10. User Manual CD Document x1

If the enclosed item(s) were damaged, please contact Meicheng immediately:

TEL : +8862-8228-0311

E-mail : mei.cheng@msa.hinet.net

Meicheng[®] **MEI CHENG AUDIO VIDEO CO., LTD.**

Address: 13F, No. 2, Jian 8th Rd., Jhonghe City, Taipei County 23511, TAIWAN

Tel: +886(2) 8228 0311, Fax: +886(2) 8228 0319

Website: www.meicheng.com.tw Email: mei.cheng@msa.hinet.net