



The Intelligent Surveillance Solution

Hardware & Software Installation user's manual

Ver. 99.320.0129.001

TABLE OF CONTENTS

TABLE OF CONTENTS 1

1000 SERIES; 2000 SERIES; 3000 SERIES 2

 Product Specification 2

 Hardware Installation 3

 System Requirement 9

4000 SERIES 10

 Product Specification 10

 Hardware Installation 11

 System Requirement 12

5000 SERIES 13

 Product Specification 13

 Hardware Installation 14

 System Requirement 16

6000 SERIES 17

 Product Specification 17

 Hardware Installation 18

 System Requirement 20

7000 SERIES 21

 Product Specification 21

 Hardware Installation 22

 System Requirement 24

DRIVER INSTALLATION 25

SOFTWARE INSTALLATION 27

Product Specification

1000 SERIES; 2000 SERIES; 3000 SERIES

Product Specification

G3 Card

	3000 Series	2000 Series	1000 Series
Display Rate	120fps(NTSC); 100fps (PAL)	60fps(NTSC); 50fps (PAL)	30fps(NTSC); 25fps (PAL)
Recording Rate	120fps(NTSC); 100fps (PAL)	60fps(NTSC); 50fps (PAL)	30fps(NTSC); 25fps (PAL)
Maximum Card	2	4	4
Video Input	4; 8; 12; 16	4; 8	4; 8
Audio Input	4	2	1
Video Resolution	NTSC: 704x480 ; 640 x 480 ; 352x240 PAL: 704x576 ; 640 x 576 ;352x288		
Compression Format	Software Compression MPEG 4		

Hardware Installation

Hardware Installation

For G3-card and R-card, the hardware installation steps are all the same except the connection of Audio/Video Cable. The following figure shows the detail.

Step 1: Insert the card onto an empty PCI slot. Connect the **Audio/Video Cable** to the connector in the same color.

Step 2: Turn on your PC and start Windows.

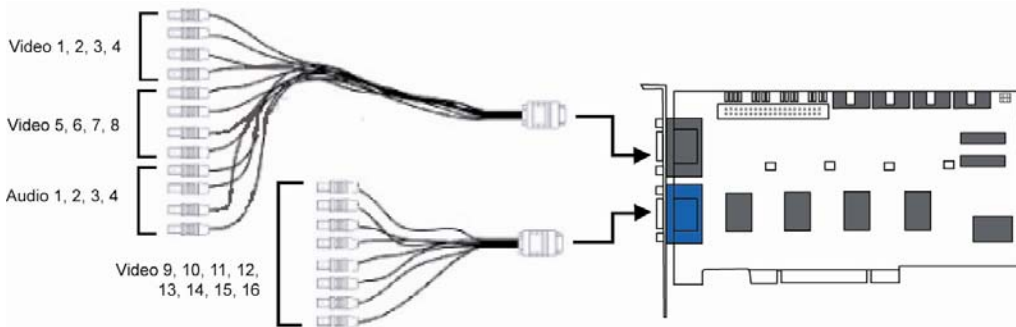
Step 3: Insert the included Software CD into CD-ROM.

Step 4: Refer the section Driver Installation on page 25 to install driver.

Step 5: After driver being installed, restart your PC.

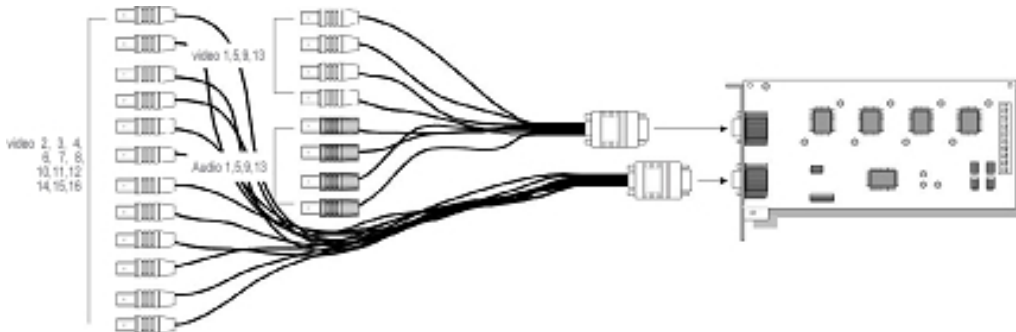
Connect the Audio/Video Cable

1. G3-card



Note: for G3-3000 series, audio channels are located at 1, 2, 3, 4.

2. R-card



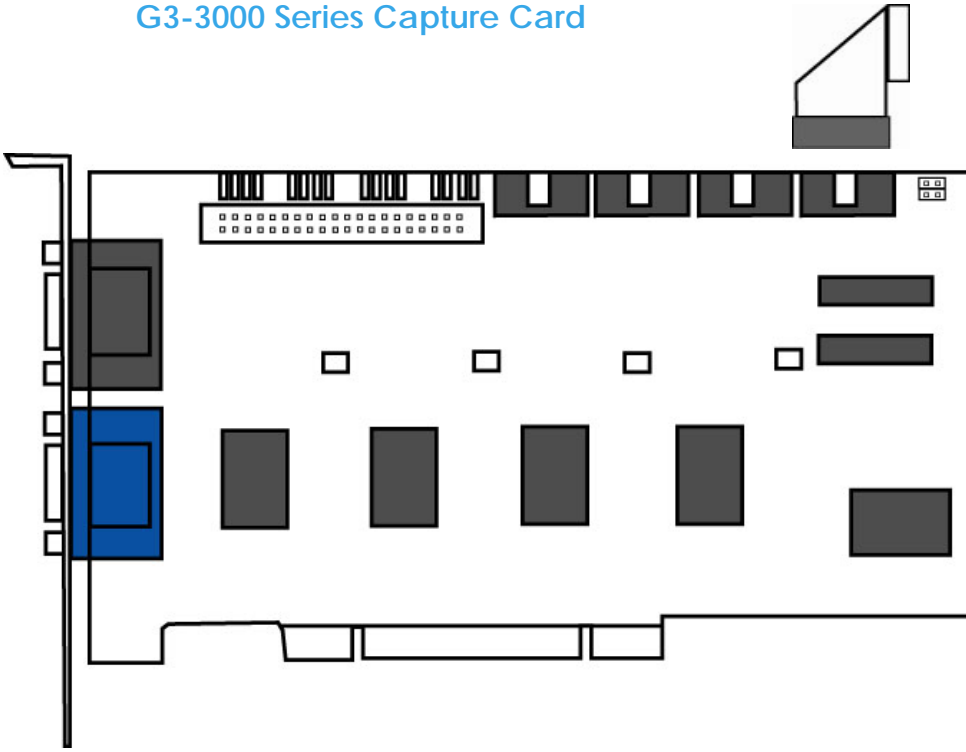
Note: for R- 3000 series, audio channels are located at 1,5,9,13.

Optional I/O Card referring to the figures on the following pages.

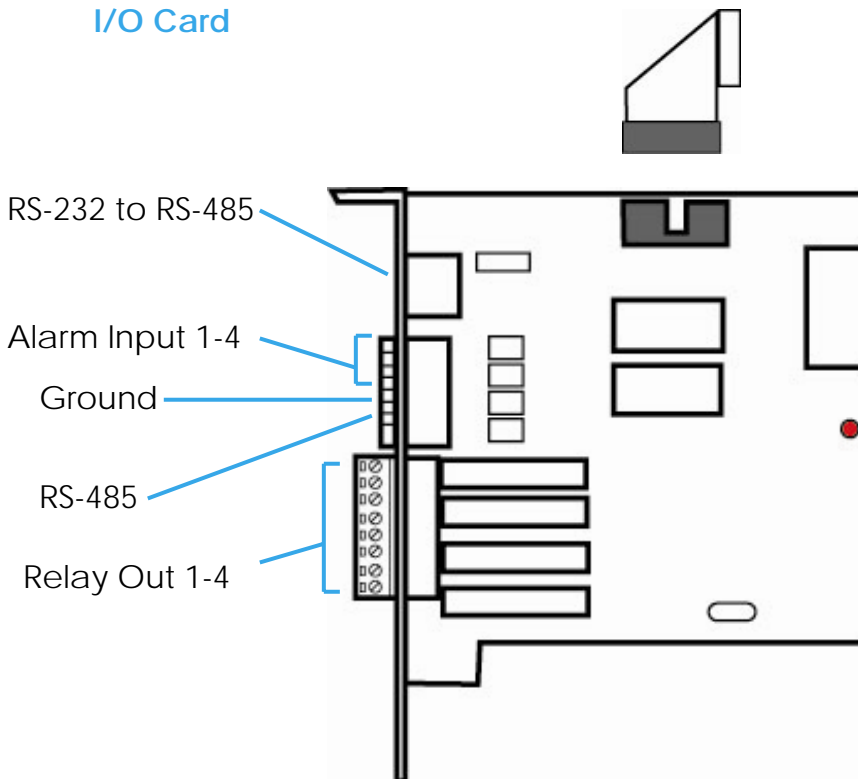
Insert the card onto your PC.

Connect the Capture Card and the I/O Card with an included ribbon cable. You may connect the ribbon cable to one of the I/O ports on the Capture Card.

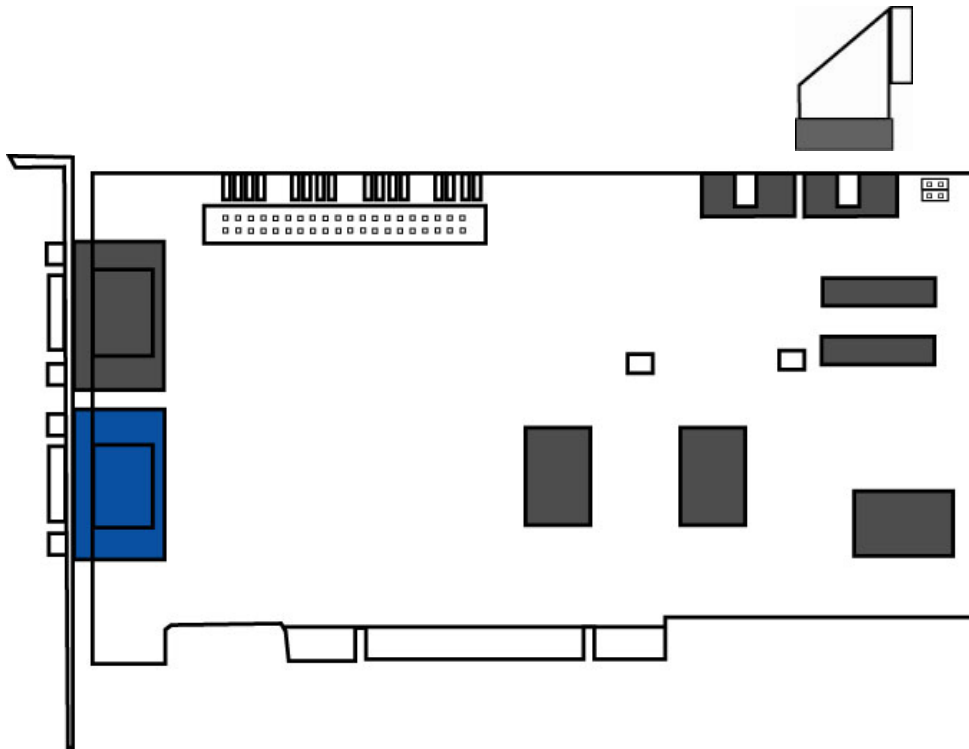
G3-3000 Series Capture Card



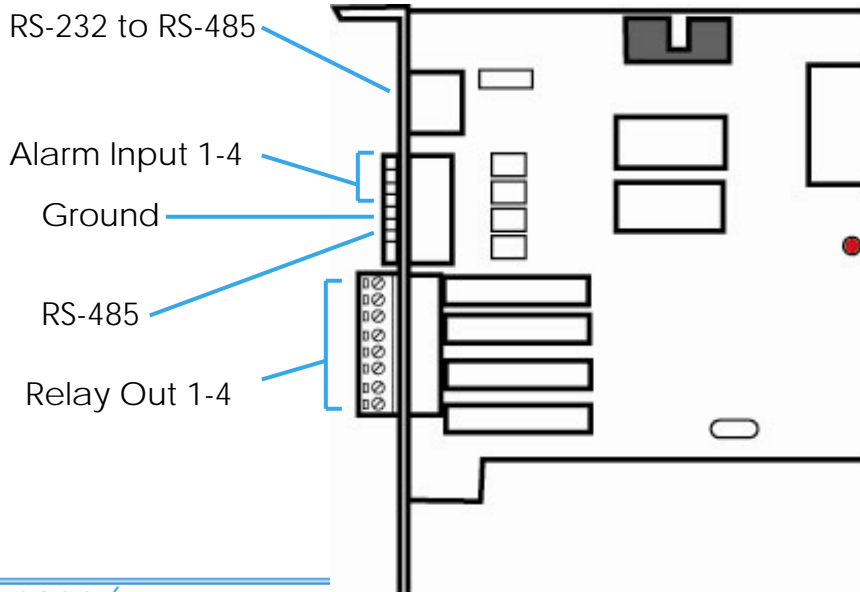
I/O Card



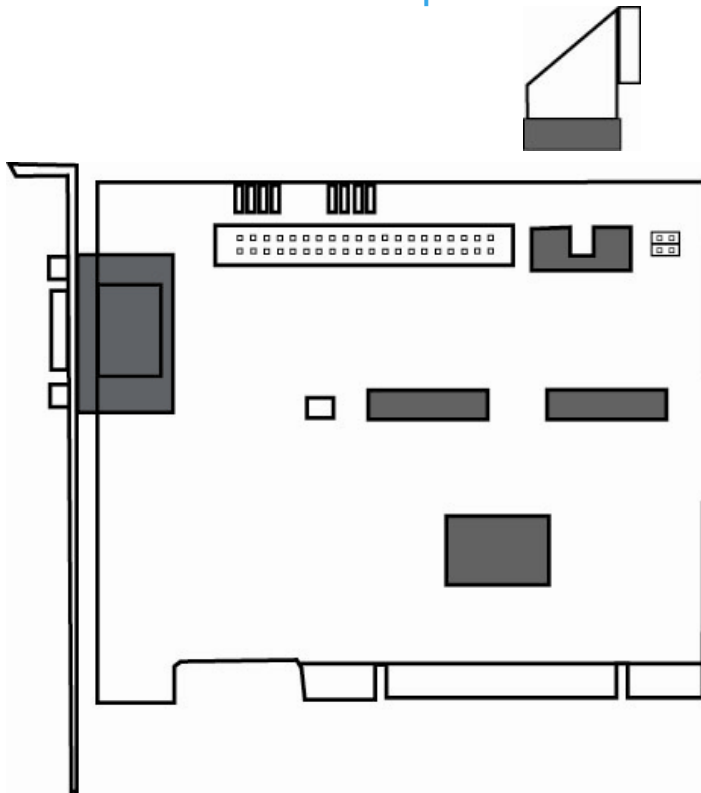
G3-2000 Series Capture Card



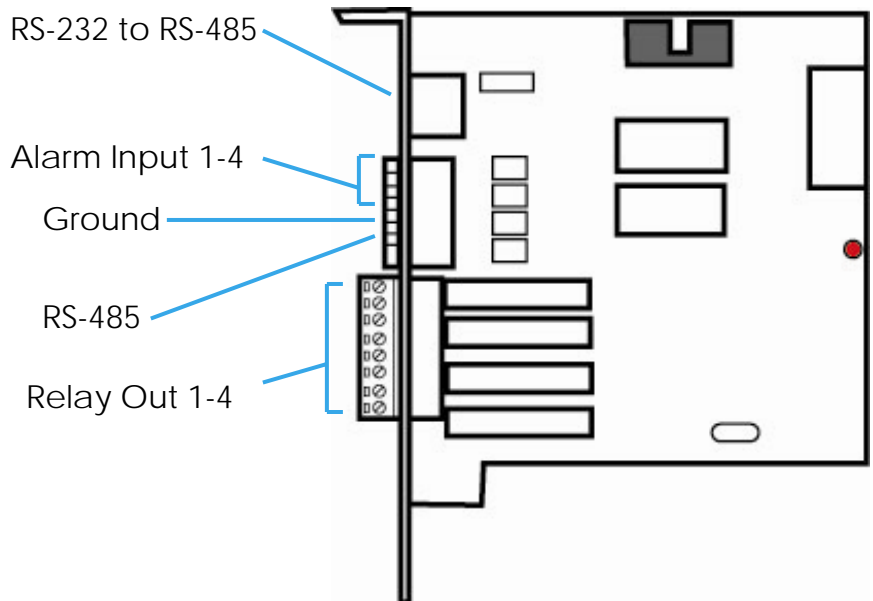
I/O Card



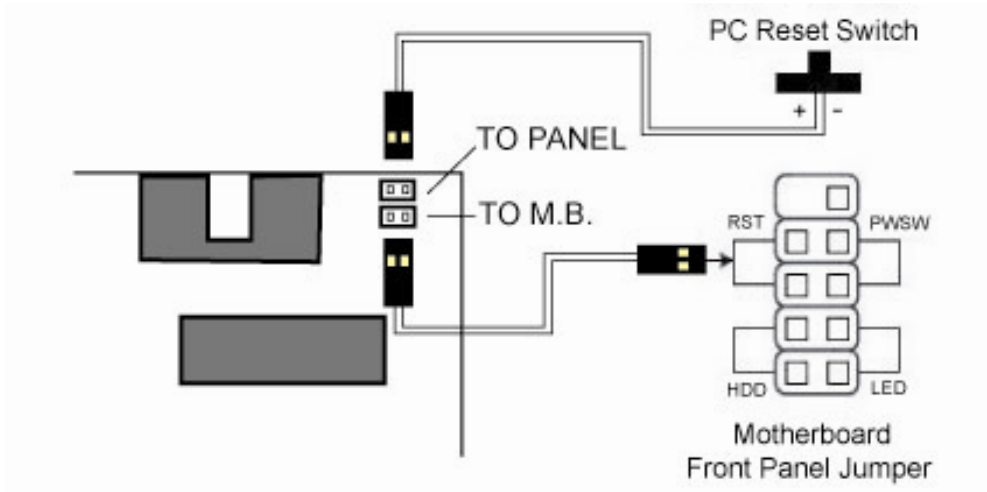
G3-1000 Series Capture Card



I/O Card



G3-card Watchdog Installation



System Requirement

System Requirement

	SCB-3000 x2 (240fps)	SCB-3000 (120fps)	SCB-2000 (60fps)	SCB-1000 (30fps)
CPU	Intel Core 2 Duo E6400	Intel Pentium D 930	Intel P4 2.8 GHz	Intel P4 2.8 GHz
RAM	2 GB	1 GB	1 GB	1 GB
Mother- board	Intel 945 or 965 chip, Intel Chipset recommended			
Display	ATI Radeon 9200, nVIDIA GeForce FX-5200, Intel 945 / 965, or above (ATI recommended)			
Ethernet	100 BaseT or Above, Gigabit LAN Recommended			
Hard Disk	80 GB or above			
OS	MS Windows XP Pro SP3 / 2003			

Product Specification**4000 SERIES****Product Specification**

	4000 Series
Display Rate	480fps(NTSC); 400fps (PAL)
Recording Rate	480fps(NTSC); 400fps (PAL)
Maximum Card	1
Video Input	16
Audio Input	16
Video Resolution	NTSC: 352x240; 704x480 PAL: 352x288; 704x576
Compression Format	Software Compression MPEG 4

Hardware Installation

Hardware Installation

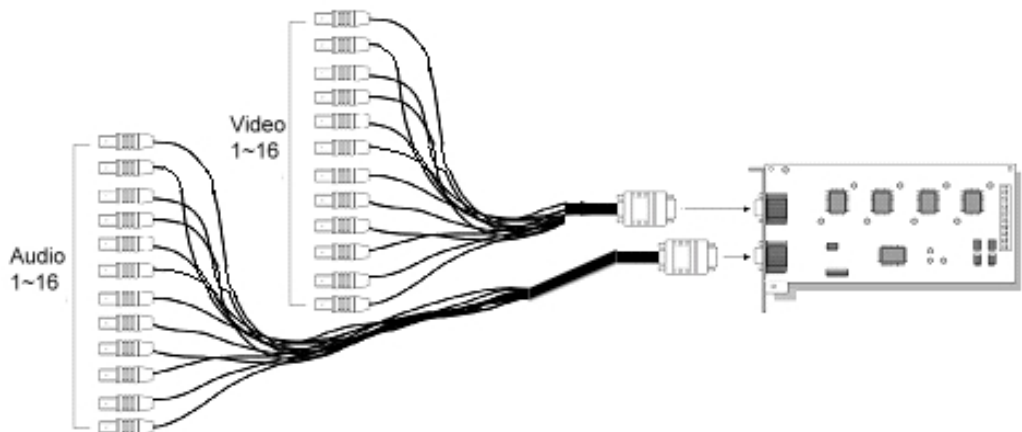
Step 1: Insert the card onto an empty PCI slot. Connect the **Audio/Video Cable** to the connector in the same color.

Step 2: Turn on your PC and start Windows.

Step 3: Insert the included Software CD into CD-ROM.

Step 4: After driver being installed, restart your PC. See the detail of driver installation from page 25.

Connect the Audio/Video Cable



System Requirement

System Requirement

SCB-4000 (480fps)	
CPU	Intel Core 2 Duo E6400
RAM	2 GB
Mother-board	Intel 945 or 965 chip, Intel Chipset recommended
Display	ATI Radeon 9200, nVIDIA GeForce FX-5200, Intel 945 / 965, or above (ATI recommended)
Ethernet	100 BaseT or Above, Gigabit LAN Recommended
Hard Disk	80 GB or above
OS	MS Windows XP Pro SP3 / 2003

Product Specification

5000 SERIES

Product Specification

	5016	5008	5004
Display Rate	480fps(NTSC); 400fps (PAL)	240fps(NTSC); 200fps (PAL)	120fps(NTSC); 100fps (PAL)
Recording Rate	480fps(NTSC); 400fps (PAL)	240fps(NTSC); 200fps (PAL)	120fps(NTSC); 100fps (PAL)
Maximum Card	4	4	4
Video Input	16	8	4
Audio Input	16	8	4
Video Resolution	NTSC: 176x120; 352x240; 528x320; 704x480 PAL: 176x144; 352x240; 528x320; 704x480		
Compression Format	Hardware Compression H.264		

Hardware Installation

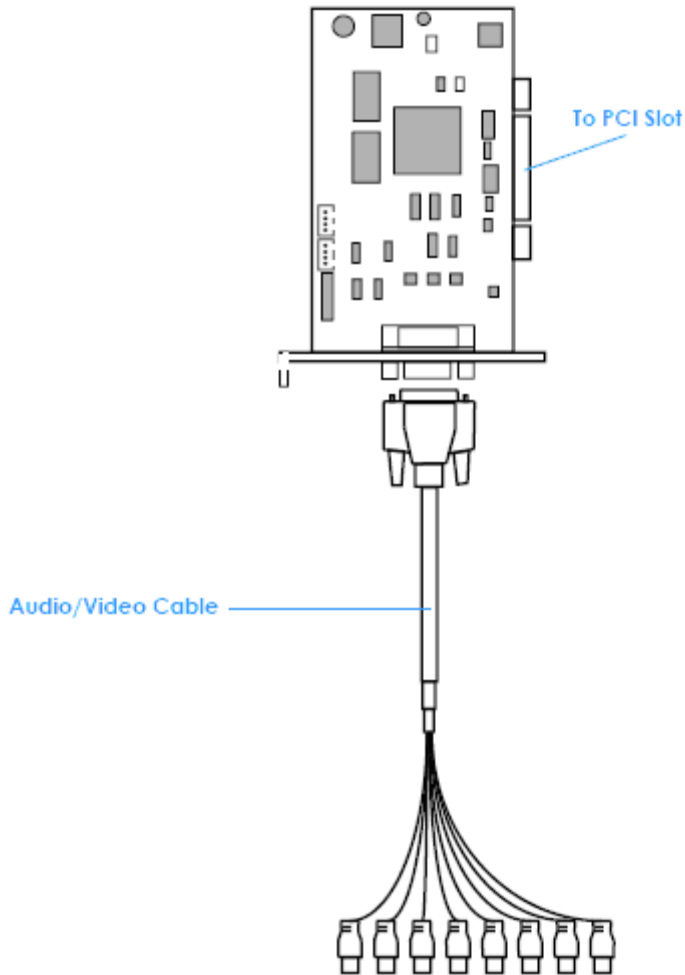
Hardware Installation

Connecting the Audio/Video Cable - referring to the figure on next page.

The audio input connectors are with white wires and marks of "AID" on them; the video input connectors are with red wires and the marks of "VID".

Note: It is known that NUUO **5004 card** has compatibility problem with PPCI slot. NUUO 5004 cards can only be installed in **SPCI slots**. Normally, those 3 PCI slots nearest to CPU are PPCI slots. Avoid install 5004 card in these 3 slots. If driver was installed okay but one still encountered a problem shown below, try to install this 5004 card in another PCI slot.

5000 Series Capture Card



System Requirement

System Requirement

Total FPS at CIF	64 channels	32 channels	16 channels	8 channels	4 channels
CPU	Intel Core 2 Duo E6400	Intel Pentium D 930	Intel Pentium D 930	Intel P4 2.8 GHz	Intel P4 2.8 GHz
RAM	3 GB	2 GB	1 GB	1 GB	1 GB
Mother-board	Intel 945 or 965 chip, Intel Chipset recommended				
Display	ATI Radeon 9200, nVIDIA GeForce FX-5200, Intel 945 / 965, or above (ATI recommended)				
Ethernet	100 BaseT or Above, Gigabit LAN Recommended				
Hard Disk	80 GB or above				
OS	MS Windows XP Pro SP3 / 2003				

Product Specification

6000 SERIES

Product Specification

	6016	6008	6004
Display Rate	480fps(NTSC); 400fps (PAL)	240fps(NTSC); 200fps (PAL)	120fps(NTSC); 100fps (PAL)
Recording Rate (CIF)	480fps(NTSC); 400fps (PAL)	240fps(NTSC); 200fps (PAL)	120fps(NTSC); 100fps (PAL)
Maximum Card	2	4	4
Video Input	16	8	4
Audio Input	16	8	4
Video Resolution	NTSC: 176x120; 352x240; 704x480 PAL: 176x144; 352x288; 704x576		
Compression Format	Hardware Compression H.264		

System Requirement

Hardware Installation

Connecting the Audio/Video Cable - referring to the figure on next page.

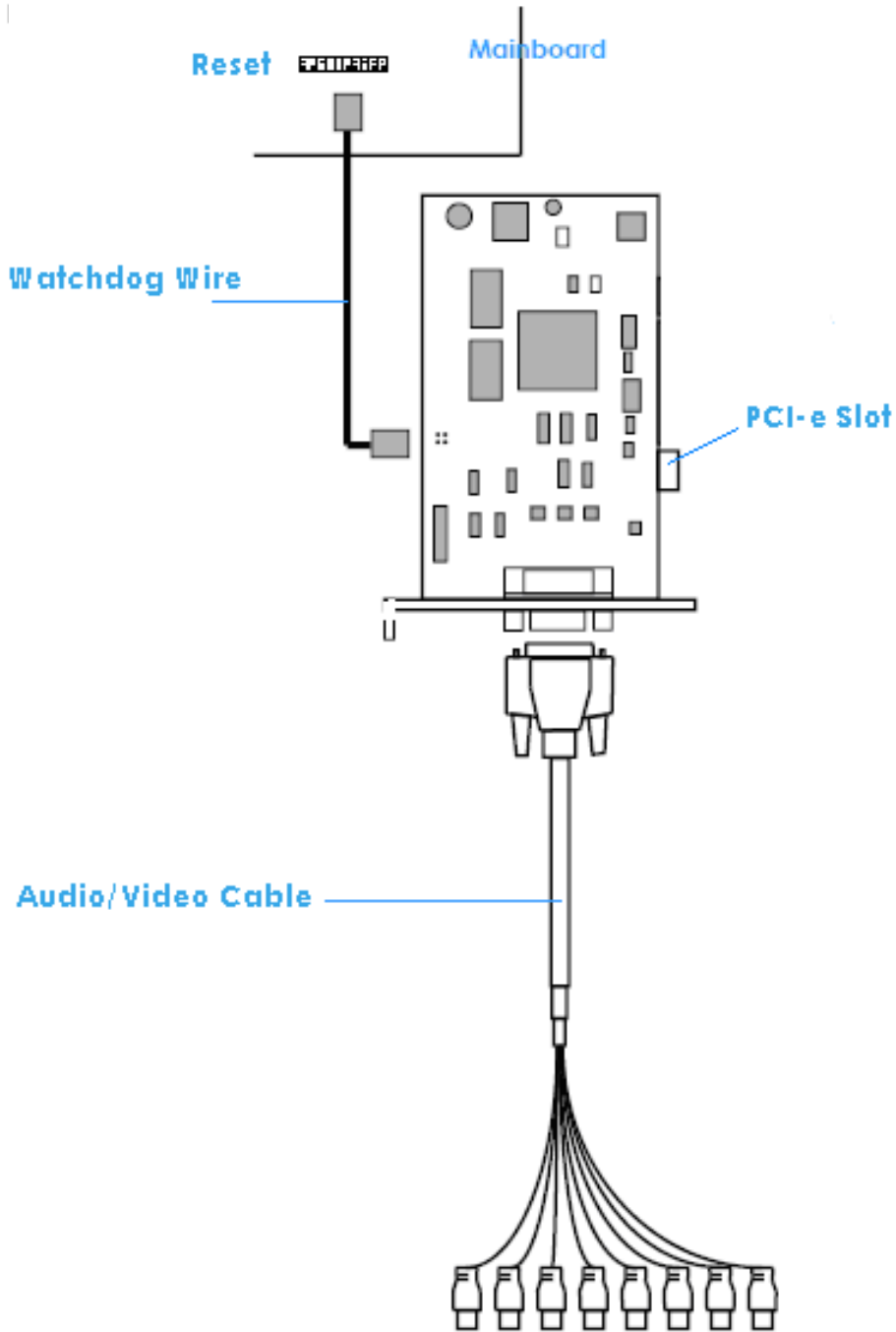
The audio input connectors are with yellow wires and marks of "A" on them (such as "A1/9"); the video input connectors are with black wires and the marks of "V" (such as "V8/16").

Connecting the Watchdog Wire - referring to the figure on next page.

Plug the **Watchdog Wire** to the **Reset** connector of the Hardware Compression Card and then connect it to the **Reset** connector on the main board.

With the **Watchdog Wire** connected, the system will be restarted if any abnormal conditions.

6000 Series Capture Card



System Requirement

System Requirement

	SCB-6016 x2 (960fps*)	SCB-6016 (480fps*)	SCB-6008 (240fps*)	SCB-6004 (120fps*)
CPU	Intel Core 2 Quad Q9550	Intel Core 2 Duo E5200	Intel Core 2 Duo E5200	Intel Core 2 Duo E5200
RAM	2 GB	1 GB	1 GB	1 GB
Mother- board	Intel P45 chip, ASUS motherboard recommended			
Display	ATI or nVidia chip graphic card			
Ethernet	100 BaseT or Above, Gigabit LAN Recommended			
Hard Disk	80 GB or above **			
OS	MS Windows XP Pro SP3 / 2003/ Vista			

* FPS is based on CIF resolution.

** When setting up a system which is more than 16 channels, the throughput of the hard disk will not be enough. Build a RAID 0 or RAID 5 system to solve this issue.

Product Specification

7000 SERIES

Product Specification

	7016	7008	7004
Display Rate	480fps(NTSC); 400fps (PAL)	240fps(NTSC); 200fps (PAL)	120fps(NTSC); 100fps (PAL)
Recording Rate (D1)	480fps(NTSC); 400fps (PAL)	240fps(NTSC); 200fps (PAL)	120fps(NTSC); 100fps (PAL)
Maximum Card	2	4	4
Video Input	16	8	4
Audio Input	16	8	4
Video Resolution	NTSC: 176x120; 352x240; 704x480 PAL: 176x144; 352x288; 704x576		
Compression Format	Hardware Compression H.264		

System Requirement

Hardware Installation

Connecting the Audio/Video Cable - referring to the figure on next page.

The audio input connectors are with yellow wires and marks of "A" on them (such as "A1/9"); the video input connectors are with black wires and the marks of "V" (such as "V8/16").

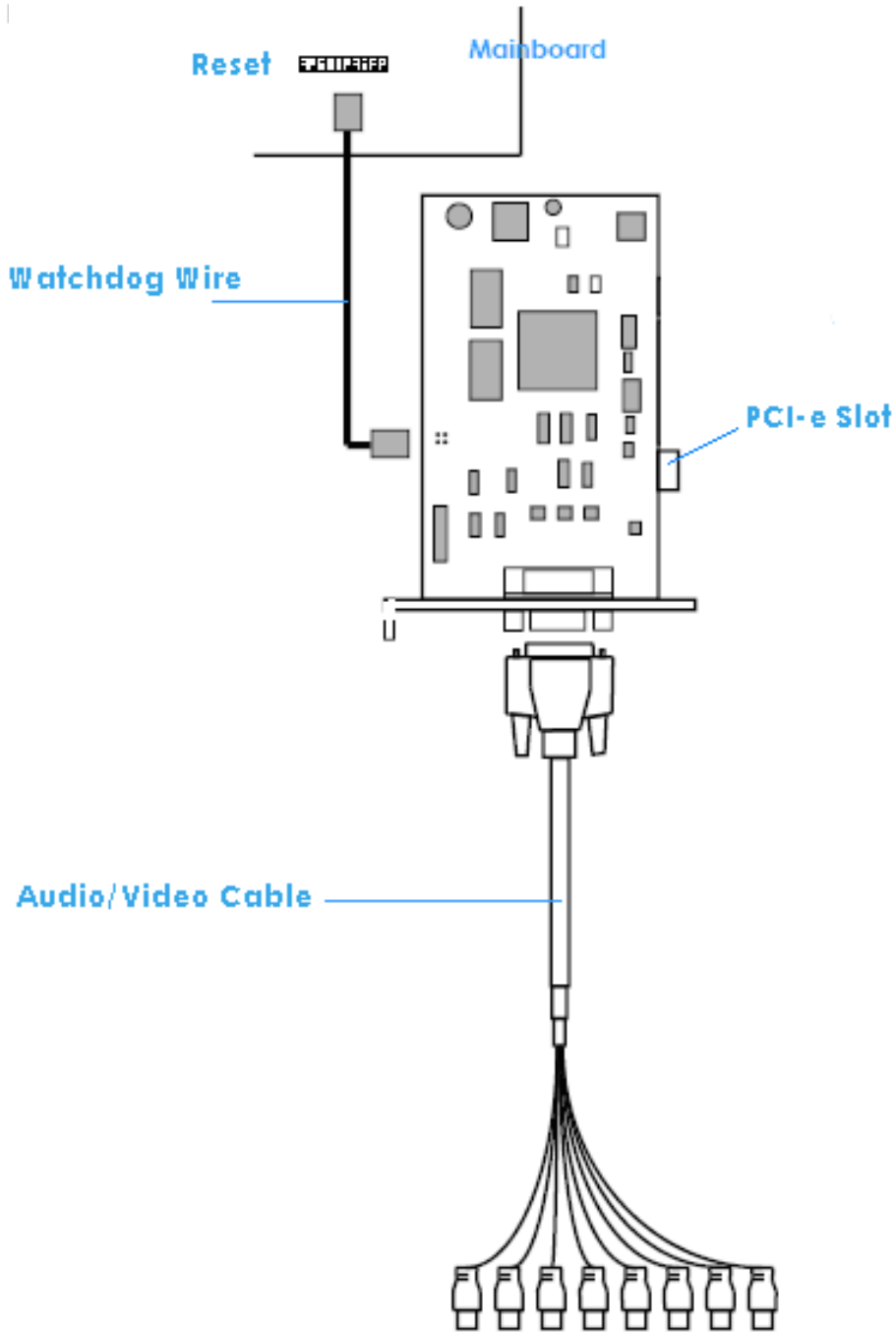
Connecting the Watchdog Wire - referring to the figure on next page.

Plug the **Watchdog Wire** to the **Reset** connector of the Hardware Compression Card and then connect it to the **Reset** connector on the main board.

With the **Watchdog Wire** connected, the system will be restarted if any abnormal conditions.

Hardware Installation

7000 Series Capture Card



System Requirement

System Requirement

	SCB-7016 x2 (960fps*)	SCB-7016 (480fps*)	SCB-7008 (240fps*)	SCB-7004 (120fps*)
CPU	Intel Core 2 Quad Q9550 **	Intel Core 2 Duo E5200 **	Intel Core 2 Duo E5200 **	Intel Core 2 Duo E5200 **
RAM	2 GB	1 GB	1 GB	1 GB
Mother- board	Intel P45 chip, ASUS motherboard recommended			
Display	ATI or nVidia chip graphic card			
Ethernet	100 BaseT or Above, Gigabit LAN Recommended			
Hard Disk	80 GB or above ***			
OS	MS Windows XP Pro SP3 / 2003/ Vista			


* FPS is based on D1 resolution.

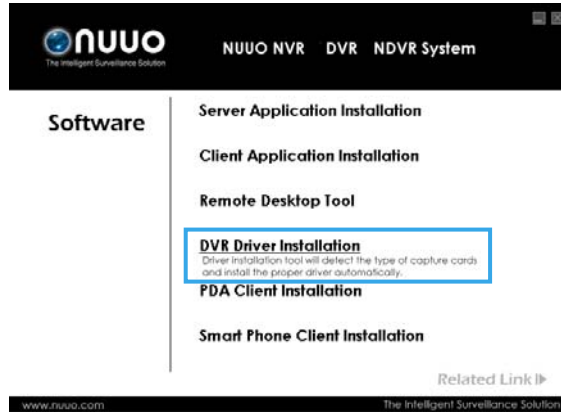
** For more information about the system requirements of different channels, please refer to the document "System Requirements of NUUO SCB-7000 series".

*** When setting up a system which is more than 16 channels, the throughput of the hard disk will not be enough. Build a RAID 0 or RAID 5 system to solve this issue.

Driver Installation

DRIVER INSTALLATION

Step 1: Insert the Installation CD. Run autostartup.exe  from the CD-ROM directly to start the installation.

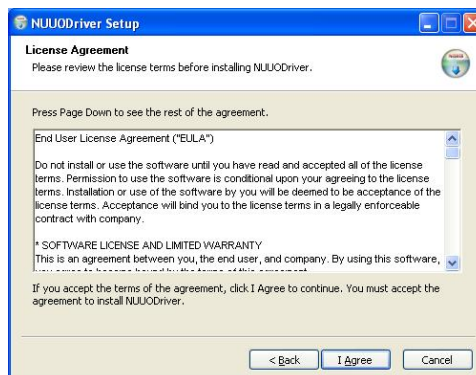


Step 2: Select "DVR Driver Installation" then click on it.

Step 3: In the NUUODriver Setup Wizard dialog box, click Next to continuous.

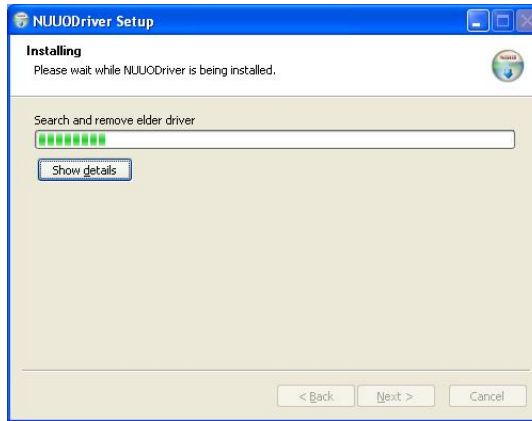


Step 4: Check the "License agreement". Click "I Agree" to continuous.



Driver Installation

Step 5: Installing NUUODriver.

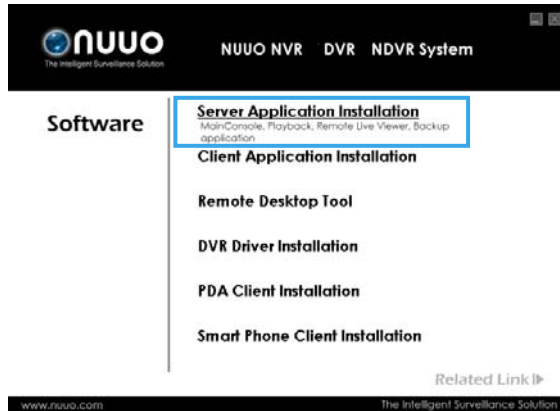


Step 6: Click "Finish" after installing the system completely, and then choose to reboot now or later.



SOFTWARE INSTALLATION

Step 1: Insert the Installation CD. Run Autorun Tool from the CD-ROM directly to start the installation.

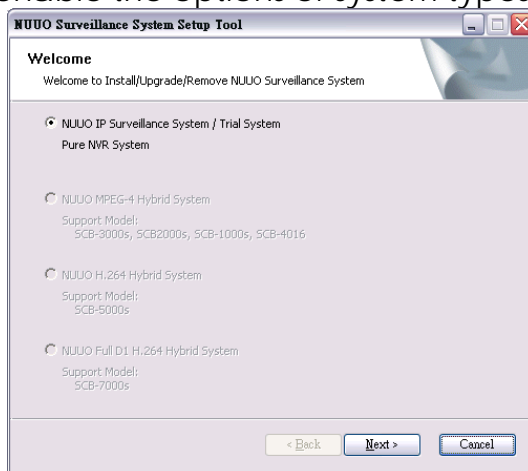


Step 2: Select "Server Application Installation" then click on it.

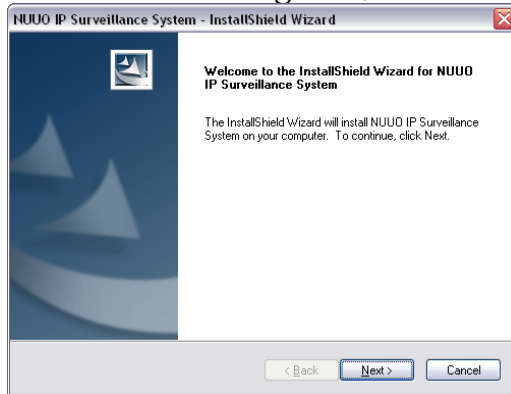
Step 3: There are 4 system types of options in "System Setup Tool" window, select one and click Next to start the installshield of Server package.

- NUUO IP Surveillance System/Trial System
- NUUO MPEG-4 Hybrid System
- NUUO H.264 Hybrid System
- NUUO Full D1H.264 Hybrid System

Note: The SetupTool will detect the type of capture cards installs on PC and enable the options of system types automatically.



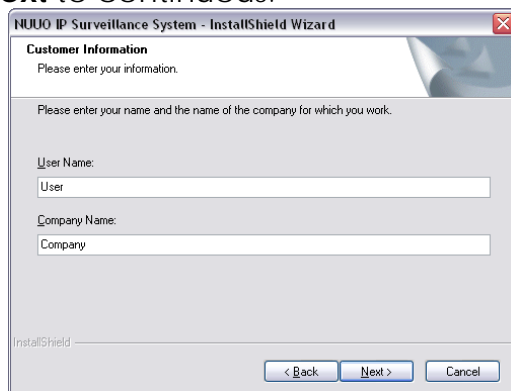
Step 4: In the InstallShield Wizard dialog box, click **Next** to continuous.



Step 5: Check the option "I accept the terms of the license agreement". Click **Next** to continuous.



Step 6: Please enter your name and the company name for which you work. Click **Next** to continuous.



Step 7: Select "Complete Setup Type" or "Custom Setup Type" to install the System.



COMPLETE SETUP TYPE

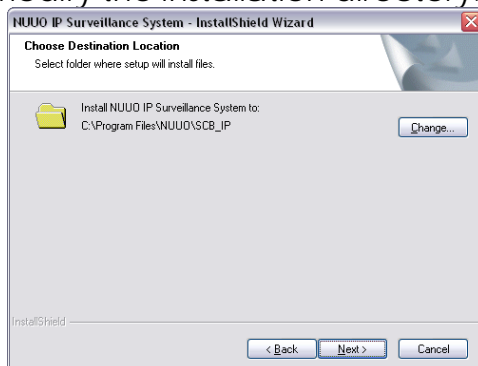
Install all program features into the default directory.

- Check the option "**Complete**", and then click "**Next**". All program features will be installed. [Require the most disk space.]

CUSTOM SETUP TYPE

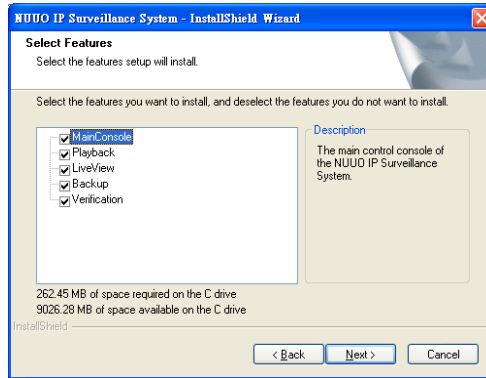
Install the system to a preferred directory. Or select whichever program feature(s) to install. This is recommended for advanced users.

- Check the option "**Custom**", and then click "**Next**".
- Select appointed folder where setup will install files to. Click "**Change**" to modify the installation directory.

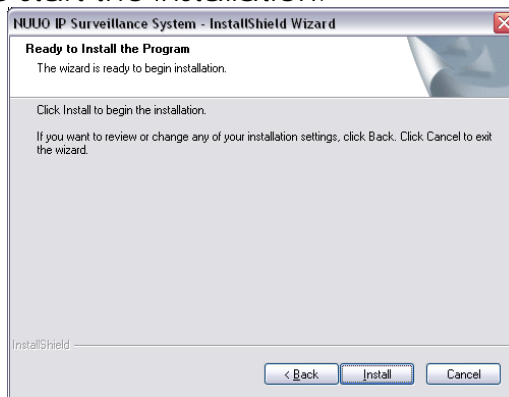


- Select the features setup will install. There are 4 features to choose in the server setup process: MainConsole, Playback, LiveView, Backup, and Verification tool. Click "**Next**" after confirmation.

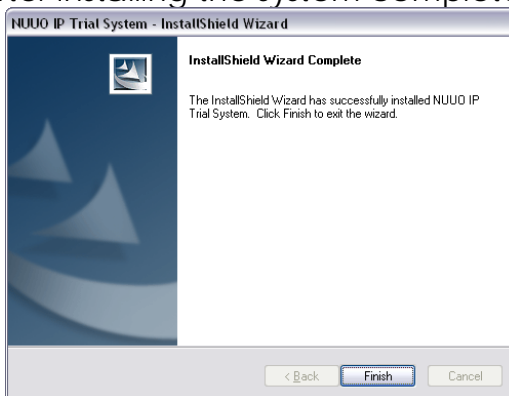
Software Installation



Step 8: Click install to start the installation.

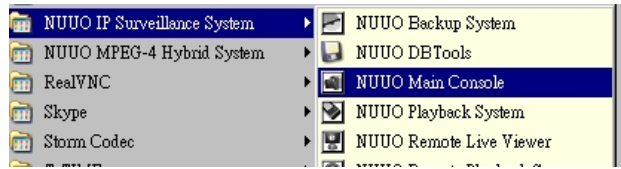


Step 9: Click Finish after installing the system completely.



Software Installation

Execute the Main Console



Enter the password you like into the edit box and enter again at the edit of Password Confirm. And then press "OK". Now enjoy our Intelligent Surveillance Solution.

