

## **APPENDIX E: MOBILE VIEWER USER MANUAL**

### **SYSTEM REQUIREMENTS.**

1. STORAGE SPACE : At least 1MB
2. MEMORY : At least 6 MB; suggest 10MB
3. SMART PHONE or PDA : Support Microsoft Windows Mobile or WinCE as following.
  - a. Windows Mobile 5
  - b. Windows Mobile 6
  - c. Windows Mobile 2003 SE
  - d. Windows Mobile 2003
  - e. WinCE 4.0 or above.

### **EXECUTING PROGRAM : (MOBILE\_VIEWER.exe)**

This program need not be installed on the Mobile device. Please save “MOBILE\_VIEWER.exe” on SMART PHONE or PDA. Then, click on “MOBILE\_VIEWER.exe” on the SMARTPHONE or PDA to execute the program.

### **QUICK GUIDE on configuration of PDA:**

Build in new site:

1. Click “Site”.
2. Click “Manage”.
3. Click “New”
4. Please key in Name, IP, Port, Account, Password, etc.
5. Click “OK”

Build in 3.5G / 3G / GPRS link:

1. Click “Operate”
2. Click “GPRS / 3G”
3. If connection success, H, 3G, or G tag will appear on the top of the screen. (H means 3.5G of HSDPA, 3G means 3G of WCDMA, G means 2.5G of GPRS)

Surveillance:

1. Please build 3G/GPRS link before surveillance via 3.5G/3G/GPRS.
2. Click “site”
3. Select site on the site list.
4. Click “Select”

### Site Management:

1. Click “Site”
2. Select site on the site list
3. Click “Manage”
4. Edit Name, IP, Port, Account, Password, etc
5. Click “OK”

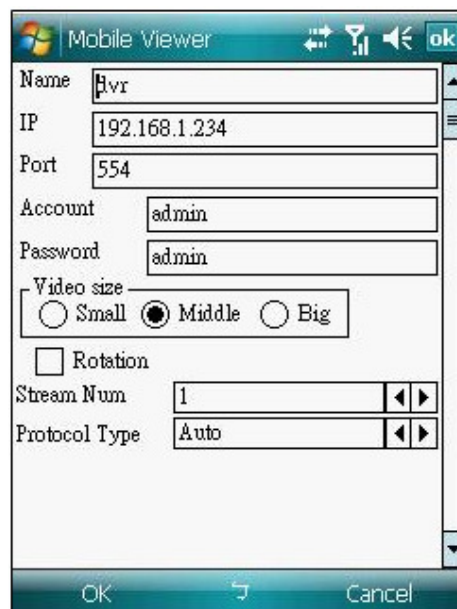
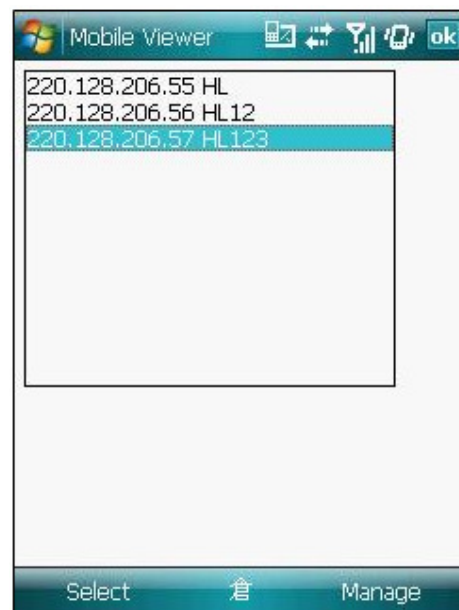
### MAIN MENU

There are 3 main menus, including Live View, Site List, and Site Data.

#### 1. Live View (main screen)



#### 2.Site List



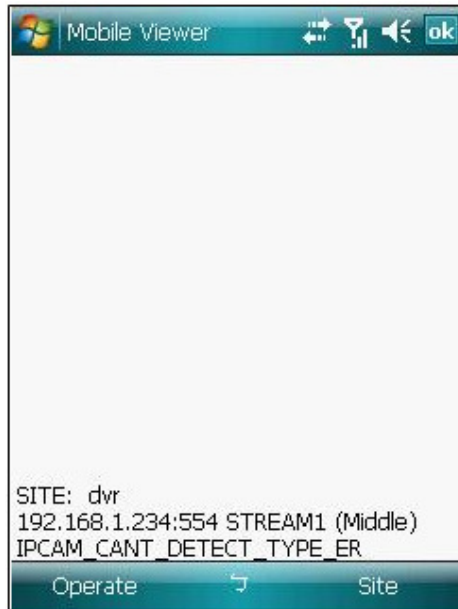
#### 3. Site Data

## Menu :

In the bottom of each main menu, there are two Submenus.

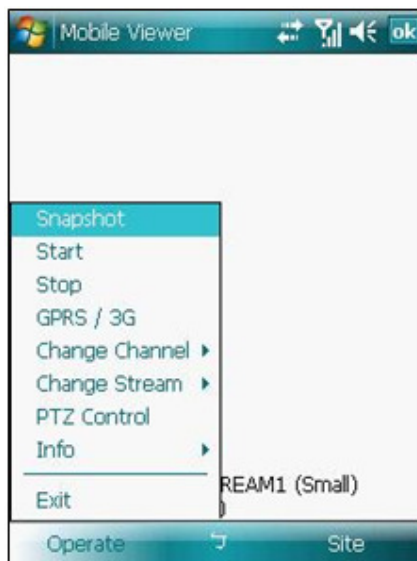
Each main menu can call another submenu or screen.

### 1. Live view screen



**Operate :** Click on to enter submenu

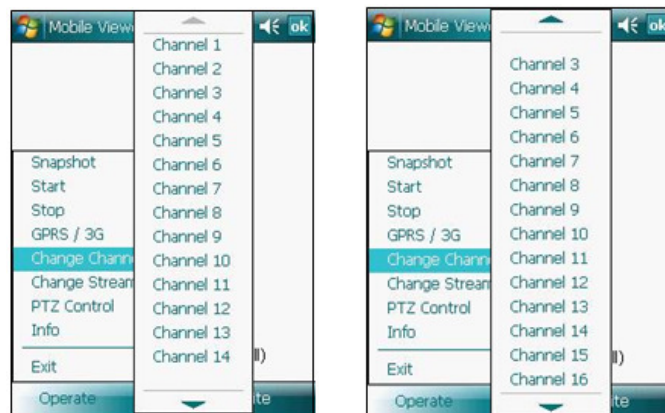
**NOTE:** As the smart phone /PDA specifications/resolution may not match with a regular monitor resolution, image may be larger than the screen size of smart phone /PDA, the user can operate navigation key to move the image to different directions to view the whole image or press the central button of navigation key to adjust the image size to the suitable one.



- a. **Snapshot** (save the picture as .jpeg files)
- b. **Start** (Enable the image transmissions methods, including USB Link, WIFI, Bluetooth, and Infrared).
- c. **Stop** (Disable the image transmission methods, including USB Link, WIFI, Bluetooth, and Infrared).
- d. **GPRS / 3G** (Enable the image transmission method of GPRS or 3G).
- e. **Change Channel** (switch channel).

**NOTE: 1. Use “Change Stream” to change the channel.**

**2. Video Server uses “Change Stream” to switch the channel.**



Channel 1 (switch to channel 1)

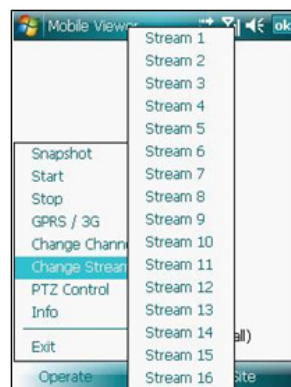
Channel 2 (switch to channel 2)

.

Channel 16 (switch to channel 16)

Channel All (switch to 16 channel format).

- f. **Change Stream** (Change channel)



Stream 1 (switch to Stream 1)

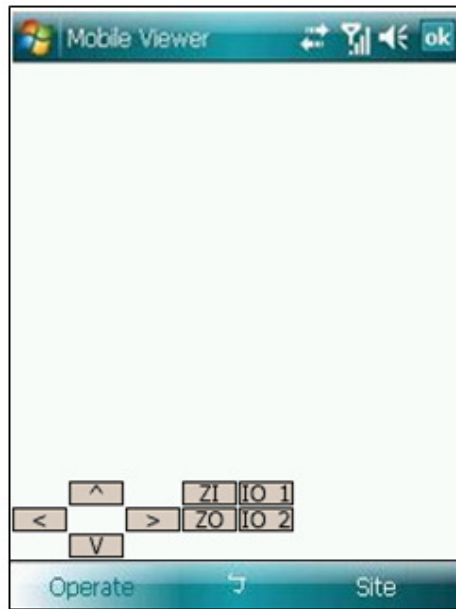
Stream 2 (switch to Stream 2)

:

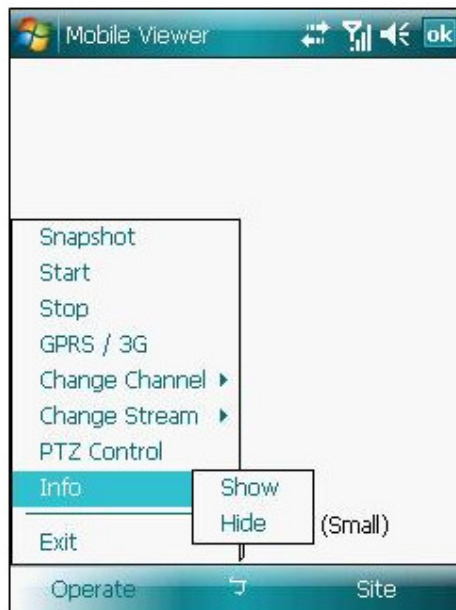
:

Stream 16 (switch to Stream 4)

**g. PTZ Control** (Call PTZ control interface)



**h. Info** (Click to show IO control)



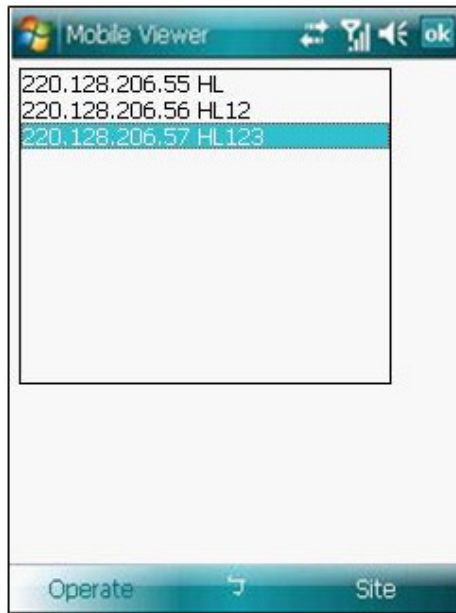
Show (show the information)

Hide (hide the information)

**i. Exit**

**Site**(Go to Site List)

## 2. Site list screen:



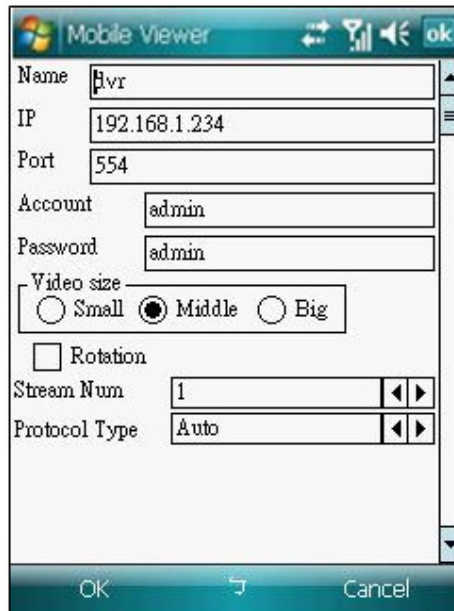
Select (Get back to Live view by click on a selected site).

Manage(Call submenu to configure)



- a. **New** (Add a new site and it will switch to “Site Data” menu).
- b. **Edit** (Switch to “Site Data”. The user can edit the information).
- c. **Delete** (Delete a selected site)
- d. **Copy**(Copy a selected site)

### 3. Site data



OK (Save the information and it will switch to Site List).

Cancel (Switch to Site List without saving the information).

Name: Site Name.

IP: IP Address or Domain Name.

Port: Internet Port.

Account: User Name.

Password: Password.

Video Size: The size of the video.

Rotation: Rotate the video.

Stream Num: In the Multi-Stream device, it is

optional to switch the stream number.


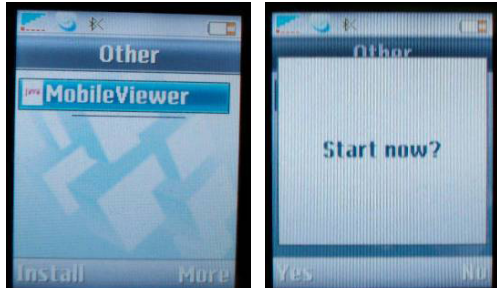

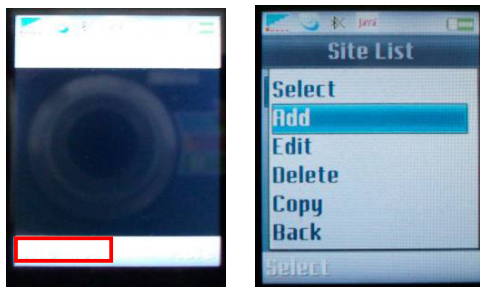
Protocol Type: There are different protocol types (Type 1 H-Protocol, Type 2 W-Protocol, Type 3 A-Protocol, Type 4 S-Protocol, Type 5 R-Protocol). The default is Auto.

### Mobile Surveillance Function List

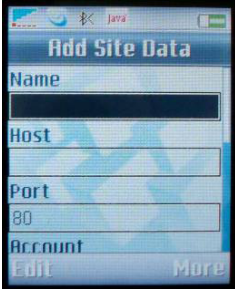
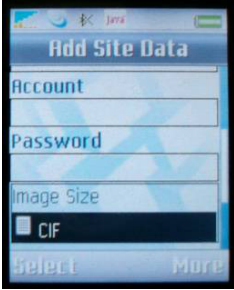
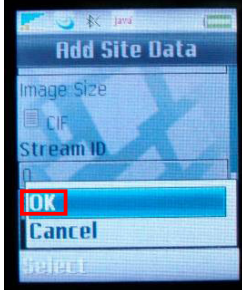
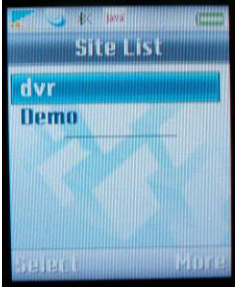
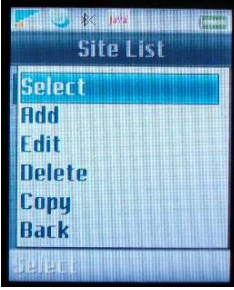
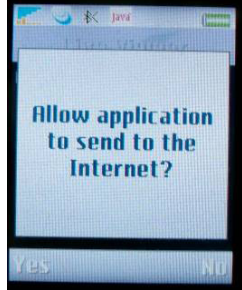
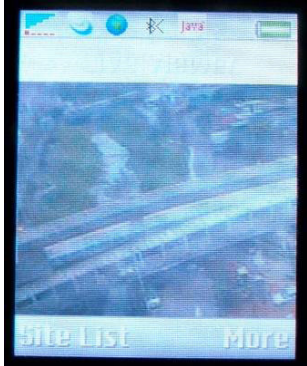
	Mobile Viewer	3GPP	Mobile J-viewer	iphone
Support cell phone type	Window CE	Symbian	Java	iphone
Communication	RTSP & TCP	RTSP	Http	Http
Player	Mobile Viewer	Built-in Stream player	Mobile Viewer Mobile J-Viewer	Safari

## Based on Sony Ericsson K608i

**\*NOTE:** Before carrying out settings, please make sure DVR uploaded with the latest firmware.

1.	Connect the mobile to PC to download the mobile software. Moreover, select the storage path, such as “Other” within “File manager” in here.	2.	Then, install the mobile software by click “install” and press “Yes” to implement the program immediately.
			
3.	In addition, use navigation key to open “Applications” and select the Mobile Viewer software to enable the software. <b>* Normally, the installed software will be setup among “Applications”.</b>	4.	Select “Site List” and press “More” to add new IP-CAM or DVR.(i.e. “Site List” → “More” → “Add ”)
			
5.	Key in all the information about the new add machine. For example, Name : Host: 220.135.151.152 Port: 100 (Default setting is 80, please ensure to change to the DVR or IP-CAM setting) User: admin Password: admin Stream ID : 1.	6.	Finally, click “More” button and select “OK” to save the setting.

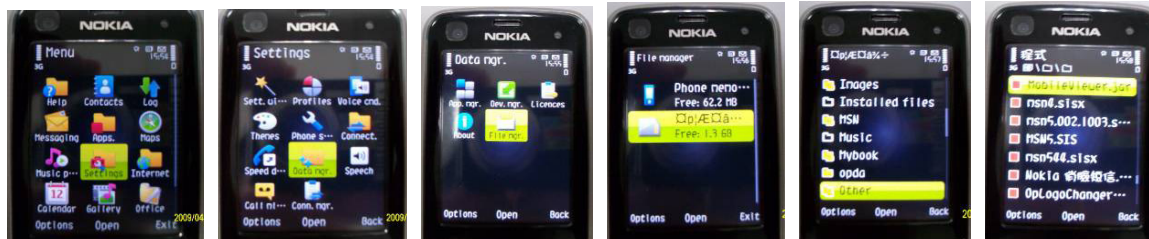


	 		
7.	Select the setup machine and press “More” to select the machine. (i.e. “dvr” → “More” → “Select” in here.)	8.	Press “More” and select “Connect”. Finally, click “Yes” to allow the application to send to the internet.
	 		
9.	Success with vivid image.		
			

# Based on Nokia 6220C (OS- Symbian S60 3<sup>rd</sup> Edition)

**\*NOTE:** Before carrying out settings, please make sure DVR uploaded with the latest firmware.

1. Connect the mobile to PC to download the mobile software. Moreover, select the storage path.  
(i.e. “Menu” → “Settings” → “Data mgr.” → “File manager” → “Other” )



2. Use navigation key to open “Applications” and select the Mobile Viewer software to enable the software.  
(i.e. “Menu” → “Applications” → “My own” → “Mobile Viewer”)



3. Key in all the information about the new add machine.  
(i.e. “Options” → “Site List” → “Options” → “Add” )

Name :

Host: 220.135.151.152

Port: 100 (Default setting is 80, please ensure to change to the DVR or IP-CAM setting)

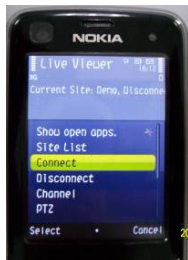
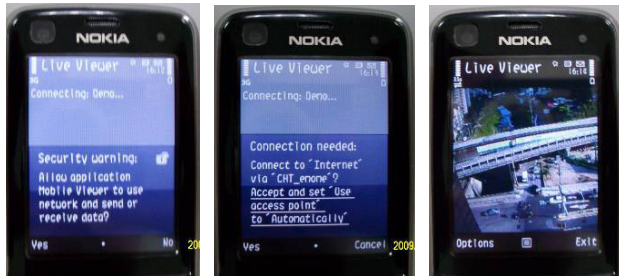
User: admin

Password: admin

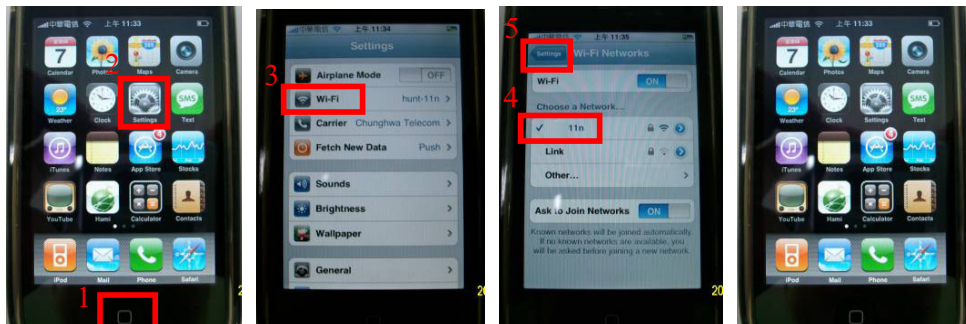
Channel : 1.

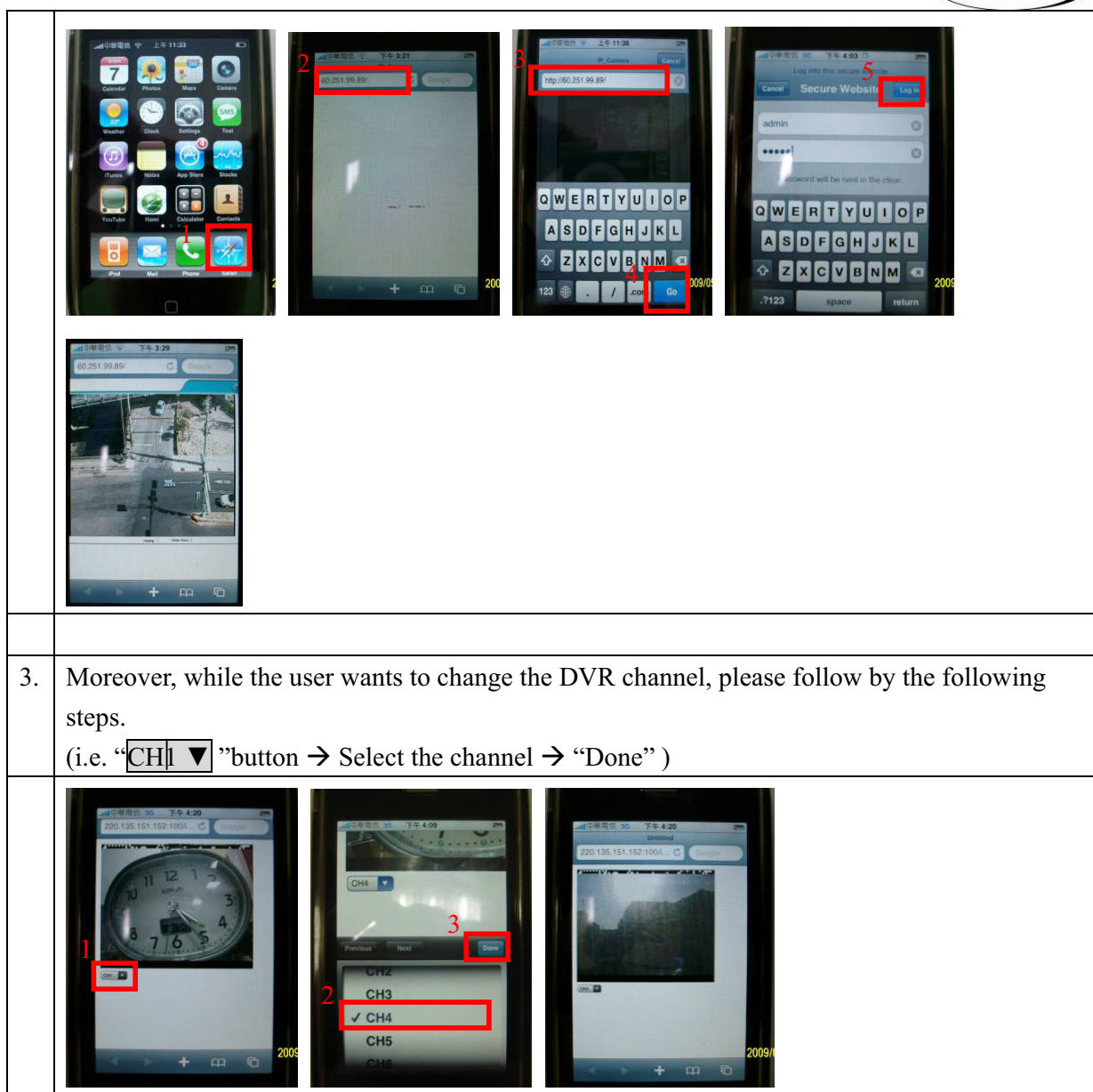
Click “OK” to save the setting.



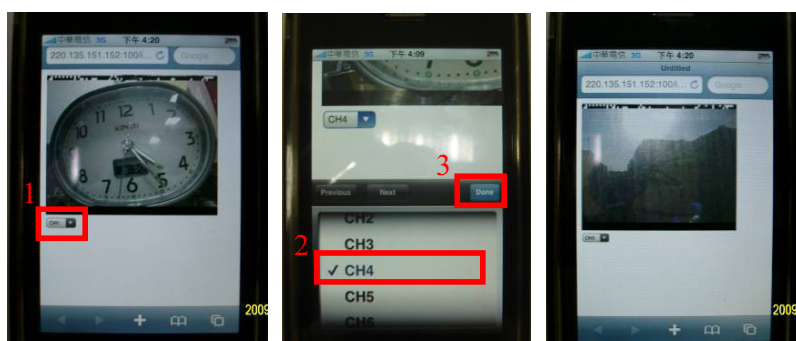
4.	Select the setup machine and click “Connect”.
	
5.	Select “Yes” to allow application mobile viewer to use the internet. Finally, Success with vivid image.
	

### Based on iPhone

1.	<p>Before using iPhone to monitor the live view of DVR or IP-CAM, please confirm iPhone can connect to the Internet or Wi-Fi.</p> <p>(“Home” Button → “Settings” → “Wi-Fi” → Choose a Network → “Settings” → “Home” Button)</p> <p>* Via Internet can connect to DVR or IP-CAM which under the WAN.</p> <p>* Via Wi-Fi can connect to DVR or IP-CAM which under the LAN or WAN (while wireless AP connected to WAN).</p>
	
2.	<p>Fill in the IP address, username and password of the IP-CAM or DVR which wants to connect. Finally, success with vivid image.</p> <p>(i.e. “Safari” → “URL” → Fill in the IP address → “GO” → “Log in” )</p> <p>* DVR (i.e. <a href="http://220.135.151.152:100/iphone.html">http://220.135.151.152:100/iphone.html</a> )</p> <p>* IP-CAM (i.e. <a href="http://60.251.99.89:80/">http://60.251.99.89:80/</a>)</p> <p>* Please ensure all the settings are the same as DVR or IP-CAM setting</p>



3. Moreover, while the user wants to change the DVR channel, please follow by the following steps.  
(i.e. “CH1 ▼” button → Select the channel → “Done” )



\*Note: Above information is for reference only. For other mobile device settings, please refer to mobile device specifications and seek advice from manufacturer before carrying out settings.

### Supported/Tested Mobile List:

Mobile Brand	Model
BlackBerry	Bold 9000, Curve 8310, Storm
Dopod	CHT9100,
IPhone	IPhone
LG	KS-20
Nokia	3250, 5800 EXPRESS MUSIC, 6220 (6220C), 6680(6681), 8500, E71, N70, N72, N93, N95
Sony Ericsson	G900, K530i, K608i, W810, W902, W910i, Z770