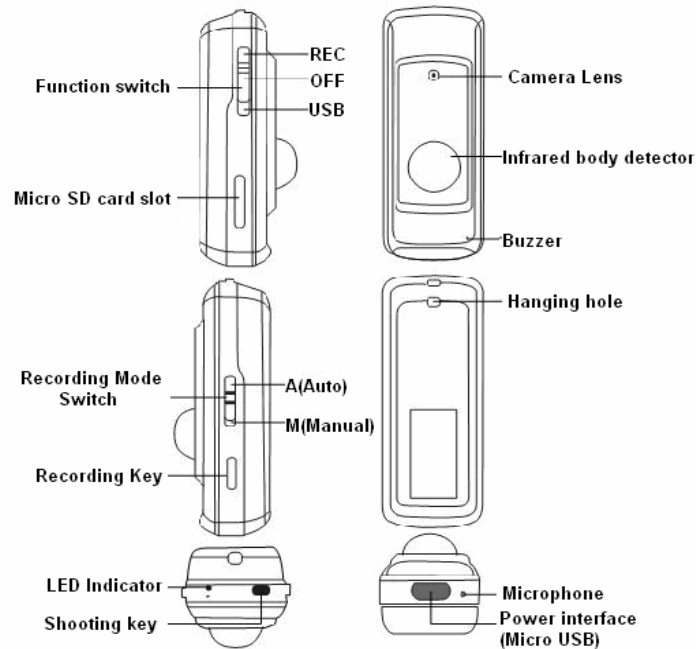


# User Manual

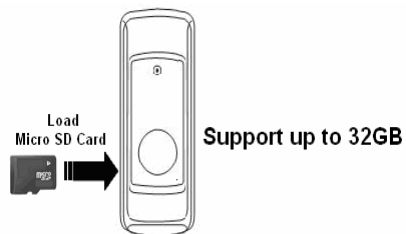
## Section 1 Product appearance



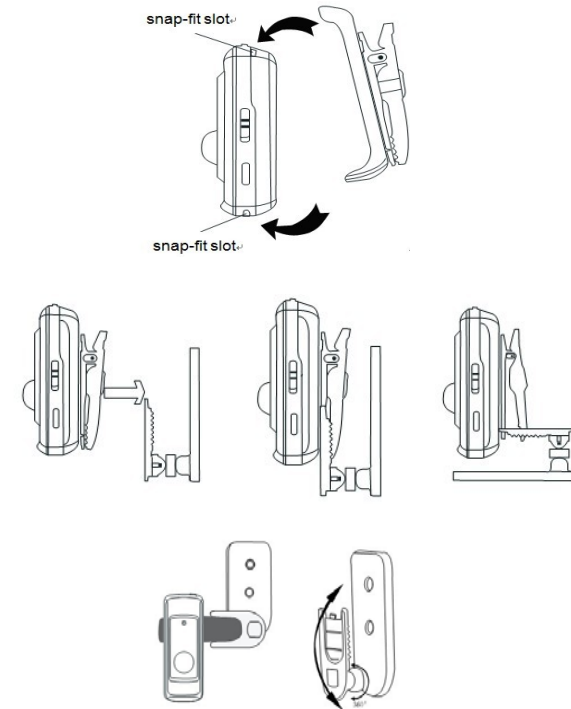
## Section 2 Load / Unload Micro SD card

Allocating the card slot at the left side of device, make sure the card pin contacting on down side and slide the card into the slot until it clicks.

Push the Micro SD card until you hear a click, then release.



## Section 3 Load into clip / Stand instructions



## Section 4 Recording Mode

### 4.1 Auto recording video

**Step1:** Move the "Recording Mode Switch" on **A** position, then move "Function Switch" on **REC** position. LED indicator will keep in "Blue"; the device is on "standby" status.

**Step2:** The device will start auto recording video mode once activated by **PIR or Voice \ PIR \ Voice \ PIR and voice** ( See section 9 "Triggered mode" ) . The device has "Bee" sound and "Blue" LED indicator turn to "Green".

**Step3:** Time for each video. Each section activated on Auto recording mode, the video will last **10min\20min\30min** ( See section 9 "Recording time" ), no matter how many times trigger signal received in this period. User can press "**Recording key**" to stop recording anytime.

**Note:** On Auto recording mode, if the device has not any trigger signal with 2 minutes, the device will stop recording and enter standby mode.

## 4.2 Manual recording video

**Step1:** Move the “Recording Mode Switch” on **M** position, then move “Function Switch” on **REC** position.

**Step2:** Press Shooting Key to enter standby mode. LED indicator has on “Blue”.

**Step3:** Press “Recording Key” to start recording video.

The device has “Bee” sound, and LED indicator change from “Blue” to “Green”.

**Step4:** Press “Recording Key” again to stop recording video.

## 4.3 Snapshot image

**Step1:** Move “Recording Mode Switch” on **M** position, then moves “Function Switch” on **REC** position.

**Step2:** Press “Shooting Key” to enter standby status, LED indicator on “Blue”. Press “Shooting Key” once to take one image.

## Operation keys instruction

Device Function	“Function switch” position	“Recording Mode switch” position
Power off	OFF	A/M
Recording Automatically	REC	A
Recording Manually	REC	M
Removable disk	USB	A
PC Camera	USB	M

**Note:** “Function Switch” should be **OFF** position before adjusting “Recording Mode Switch”.

## Section 5 Operational indication

LED Indicator	Action	Status
Red	On	Charging by power adapter
	Off	Charging completes or no external power
Blue	Constant Light	Standby mode
	Flash quickly	Removable disk / PC Camera
	Off	Energy saving
Green	Constant Light	Memory is full
	Flash slowly	Recording video
	Flash quickly	Do not recognize the memory card
Purple	Constant Light	USB mode

Tip: Slow flash 1 time per second, quick flash 2 times per second.

## Section 6 Buzzer indication

Action	Status
One short beep	Start recording / capturing picture
Two short beeps	Stop recording
Three short beeps	( Device on standby mode for 60 seconds then enter) Energy saving mode
Four short beeps	Low battery
Constant beep	Device works abnormally

## Section 7 Removable disk Mode

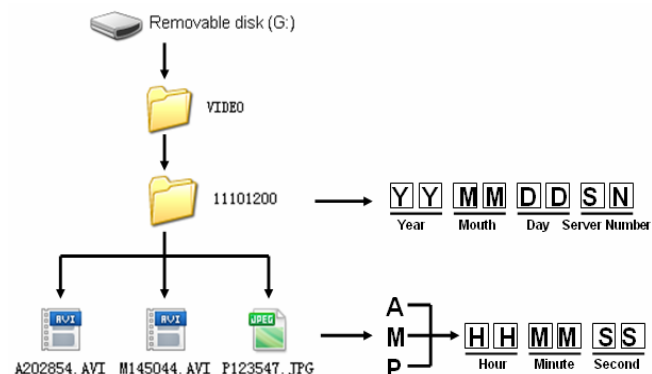
### Method 1:

**Step1:** Move” Function Switch” on **OFF** position, then move “Recording Mode Switch” on **A** position;

**Step2:** Connecting the device with computer via USB cable; Move “Function Switch” to **USB** position;

Then the device will be found as a “Removable disk” and can operate the video file in Micro SD card.

**Method 2:** Move “Function switch” on **OFF** position, takes out the Micro SD card and install in the card reader. Plug the card reader into computer to check the file.



**A:** Auto video recording mode


**M:** Manual recording mode

**P:** Photograph mode

Recommend to copy the video files to computer before play.

**Note:** If the power is cut off and battery is taken out, the device’s system time will lose, in this case, the parameters setting file needs to be re-operated for correcting parameters and time (**see section 9 “Device time”**).

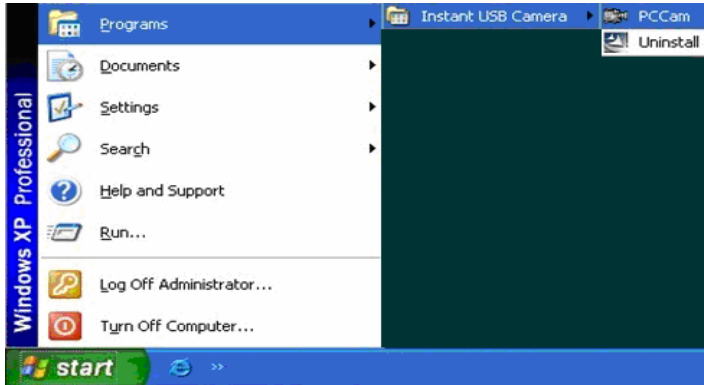
## Section 8 PC Camera

**Step1:** Setup  Driver\_ Instant USB Camera.exe Driver\_ Instant USB Device software

**Step2:** Restart the computer.


**Step3:** Move “Function Switch” on **OFF** position, “recording Mode switch” on **M** position, then connect the device to computer via USB Cable. Move “Function Switch” on **USB** position.

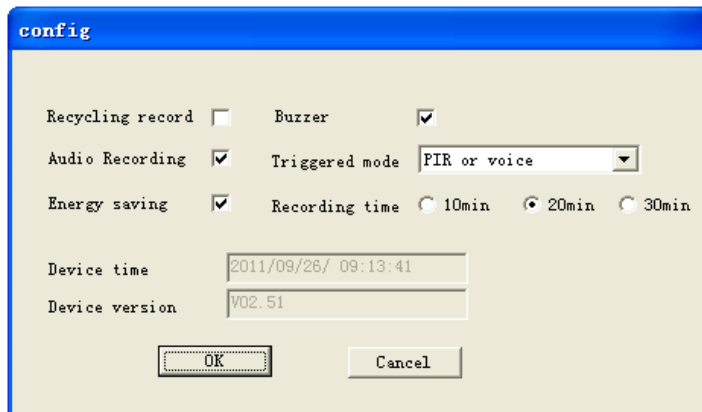
**Step4:** Run PCCam software.





## Section 9 Parameter setting

User can connect the device to computer and run the setting software to change the device setting.

Copy this software  config.exe to the device's root directory Micro SD Card to run this software, double-click to enter setting interface, as shown below:



Select the parameters, click **OK**, the software will exit automatically, meanwhile, a parameters setting file  TIMECFG.TXT will create and store in the Micro SD card. Disconnect the device and computer; turn off the device for 20 seconds.

After the device restarts, device will auto read the configure file  TIMECFG.TXT and delete this file automatically. If this file still exists, it means the parameters setting is not successful, repeated above operation.

### Recycling record:

Select whether to delete the oldest video file when Micro SD card is full.

### Audio Recording:

Select whether to record both video & audio or only record video.

### Energy saving:

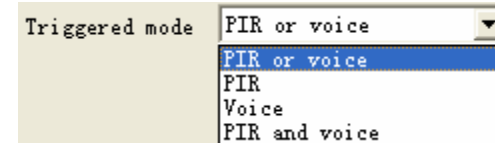
If this item is selected, when the device is supplied by battery, the device will enter energy saving mode when it is not videoing or shooting more than one minute under normal working circumstances. The default mode is not energy saving mode.

### Buzzer:

Select whether beep ring of device operation.

### Triggered mode:

There are four different video triggered conditions



**A: PIR or Voice** (Default setting)

**B: PIR**

**C: Voice**

**D: PIR and voice**

### Recording time:

Set max one video file time: **10 min / 20 min** (Default setting) / **30 min**.

### Device Time:

The device will synchronize the date and time with computer automatically when the setting software is running.

### Device version:

Show the device software version.

**Section 10 General Troubleshooting**

No	General Trouble	Possible Reason	Solution
1	Indicator flash quickly in green color, can't enter video status	No Micro SD card or card didn't install properly	Load Micro SD card or load SD card properly
2	Indicator flash constantly in green color, can't enter video status	There is not enough space of Micro SD card, and recycled video function is not set.	Delete some old files of Micro SD card, or set recycled video function by parameters setting tool.
3	Images blur	The device is not clear	Clear the device
		The protective film on the device is not peeled off.	Peel off protective film on the device.
4	The indicator can't become blue after the device is turned on	Battery supply for a long time, low voltage	Connect external power for more than 10 minutes, and then restart the device.
		Battery supply voltage, manual video mode, didn't press Shooting key	Press Shooting key once
5	The recording file time is incorrect	External power disconnects, and battery was taken out before.	Use parameters setting tool, reset the device system time.
		External power cut off or no electricity, battery supply for a long time, low voltage	
5	The recording file time is incorrect	External power cut off, battery not working, and then resumes external power.	Change the battery, use parameters setting tool, reset the device system time.
		Use parameters setting tool to set parameters, the computer time which connected with the device is incorrect.	Regulate the computer time, use parameters setting tool to reset parameters, restart the device within 20 seconds

No	General Trouble	Possible Reason	Solution
		Use parameters setting tool to set parameters, restart the device after a long time(more than 20 seconds)	use parameters setting tool to reset parameters, restart the device within 20 seconds
6	Video file play abnormally	Computer recognize USB disk slowly	Copy the video file to computer, and then play the video with software in the computer.

### Section 11 Main technical specifications

No.	Item	Index
1	Camera angle	68 degrees
2	Video format	AVI
3	Video resolution	VGA 640 X 480
4	Image format	JPG
5	Image size	1600 X 1200
6	Micro SD Card	1G~32G
7	Battery capacity	240mAh
8	Charging time	2 hours
9	Infrared detection range	4 meters
10	Infrared detection angle	70 degrees
11	Voice sensor triggered condition	Start videoing when it is above 65dB
12	Battery videoing time	Up to 120 minutes