

**queue™**  
**(V4.X)**  
**(for V1 Driver)**  
**(for Windows XP)**

**Visual Presenter Image Software**  
**User Manual**

Date: 2009/08/11

# Contents

1.	Introduction .....	1
2.	System requirement .....	1
3.	Automatic installation of queue™ .....	1
4.	Manual installation of queue™ .....	12
5.	Start to use queue™ .....	23
6.	Operation .....	24
6.1	Main Menu .....	24
6.2	Annotation Tools .....	25
6.4	Camera Settings .....	26
6.5	Options .....	26
6.6	Time Lapse .....	27
7.	Descriptions of Functions .....	28
7.1	Start the Visual Presenter .....	28
7.2	I would like to capture images .....	28
7.3	I would like to display the live image .....	28
7.4	I would like to freeze the live image .....	28
7.5	I would like to annotate the displayed image .....	29
7.6	I would like to add textual annotation to images .....	30
7.7	I would like to record video .....	31
8.	Uninstall .....	32
9.1	Uninstall queue™ .....	32
9.2	Uninstall USB Driver (Case of Windows XP) .....	32
9.	Troubleshooting .....	34
10.1	Q: Installation is complete. Reconnect Visual Presenter to show [Found New Hardware].	34
10.2	Q. No Image display when launch queue™ .....	34

# 1.Introduction

queue™ PC and USB driver which support WIA and TWAIN standards.

## 2.System requirement

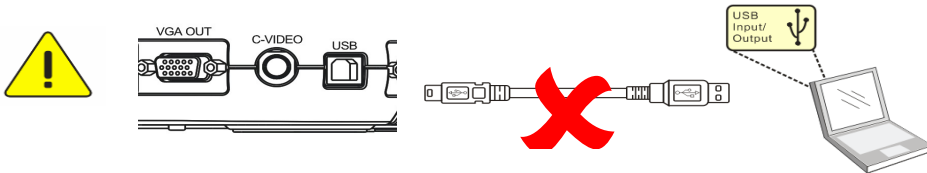
- CPU : P4 1.8 GHz and above
- RAM : 512MB
- Graphics Card
  - ◆ Graphics Memory: 8M Bytes above
  - ◆ Support DirectX 9
- Resolution : XGA (1024x768) and above
- Free disk space : 100MB

## 3.Automatic installation of queue™

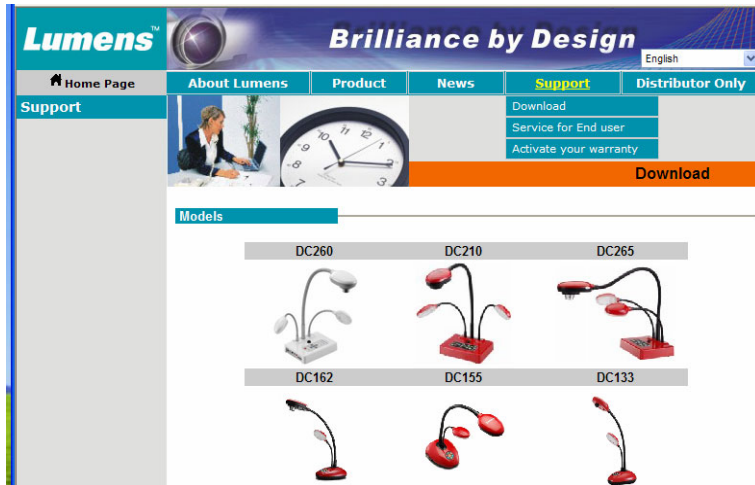


**<Very Important>** To ensure successful installation, please make sure each of the following steps is completed.

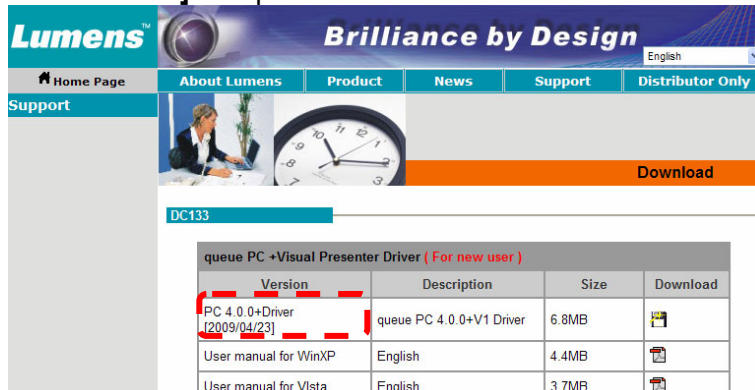
3.1. Remove the USB cable from Computer and Visual Presenter.



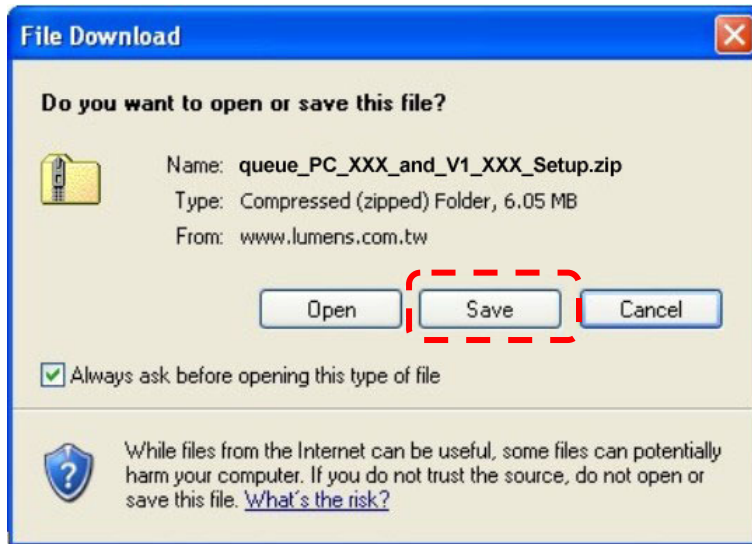
3.2. Go to Lumens™ website <http://www.lumens.com.tw/eng/goto.asp> and select the model you have purchased.



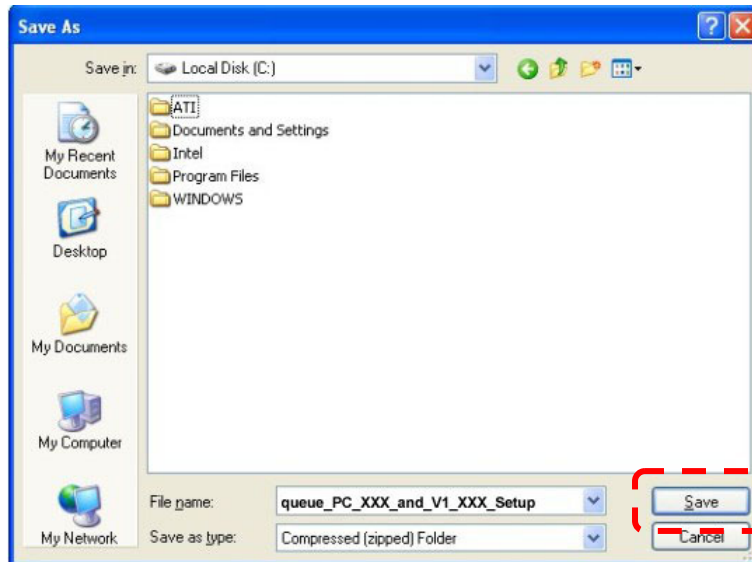
3.3. Find the [ queue 4.X+ Driver] and press  to download.



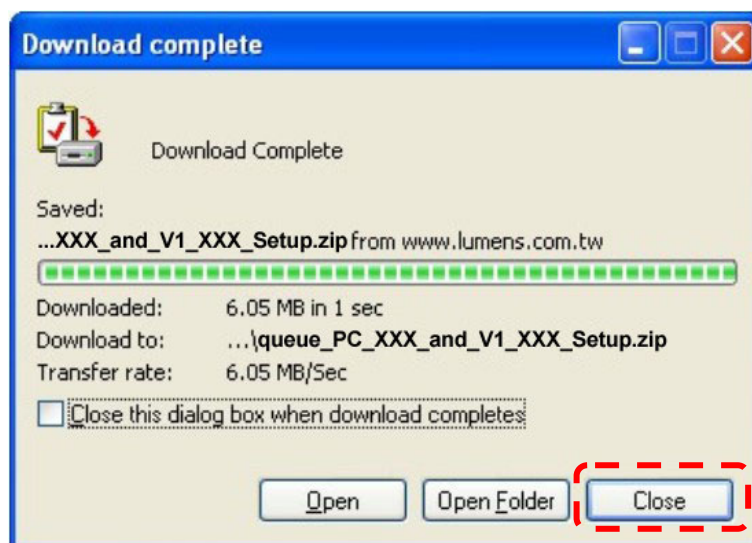
3.4. Press **[Save]**.



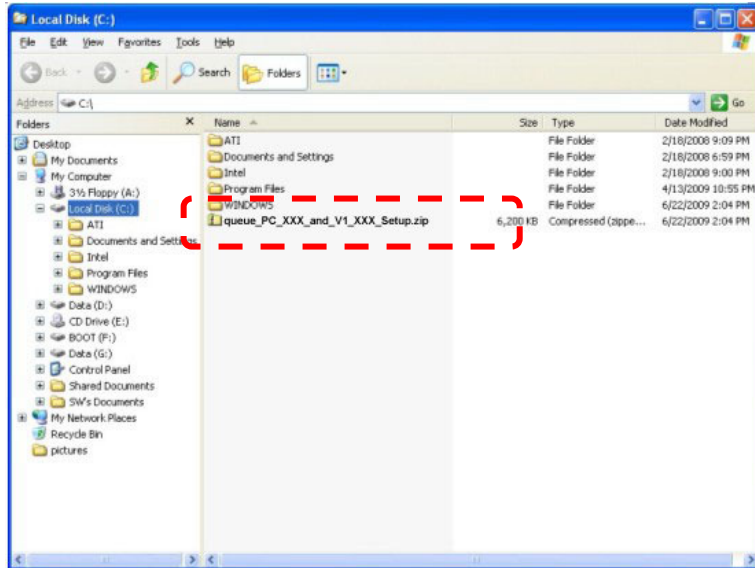
3.5. Select the storage location and press **[Save]**.



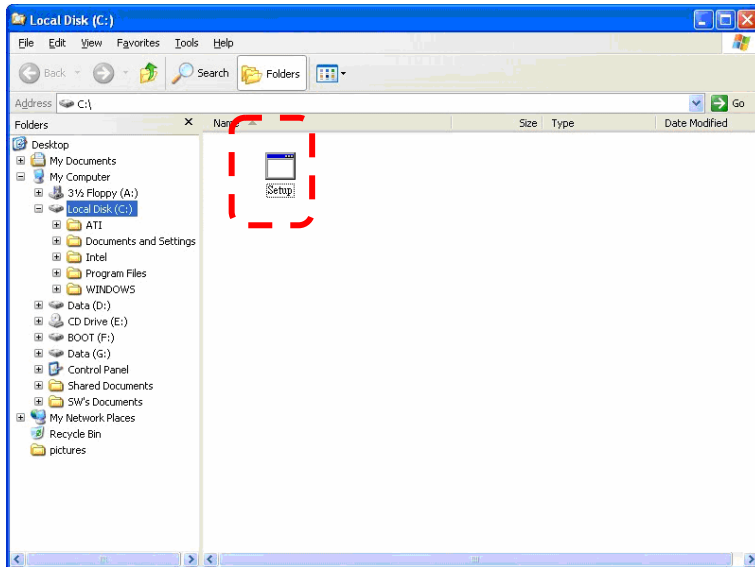
3.6. After download is complete, press **[Close]**.



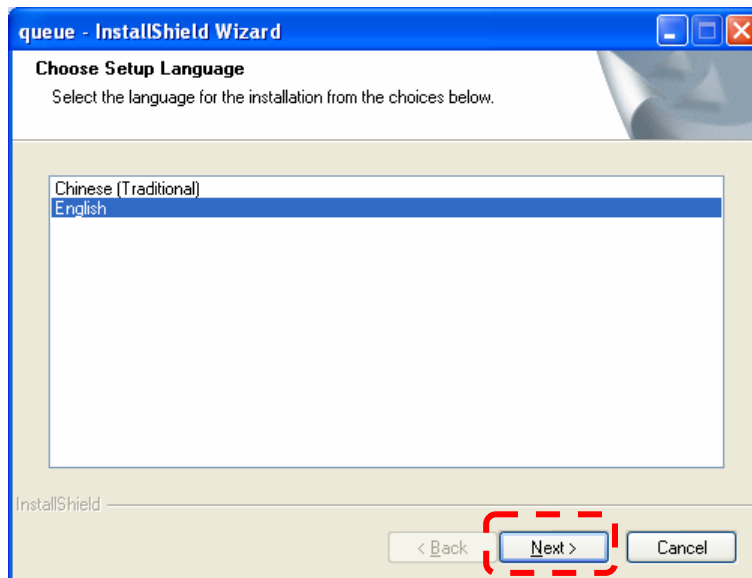
3.7. After finding [queue\_PC\_4.0\_and\_V1\_XX\_Setup], double-click it to decompress [Setup.exe].



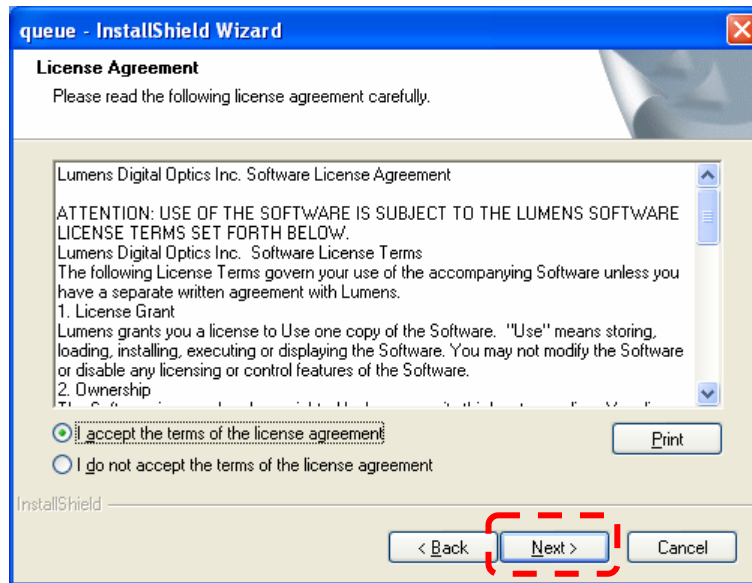
3.8. Double-click [Setup.exe] to start the Installation Wizard.



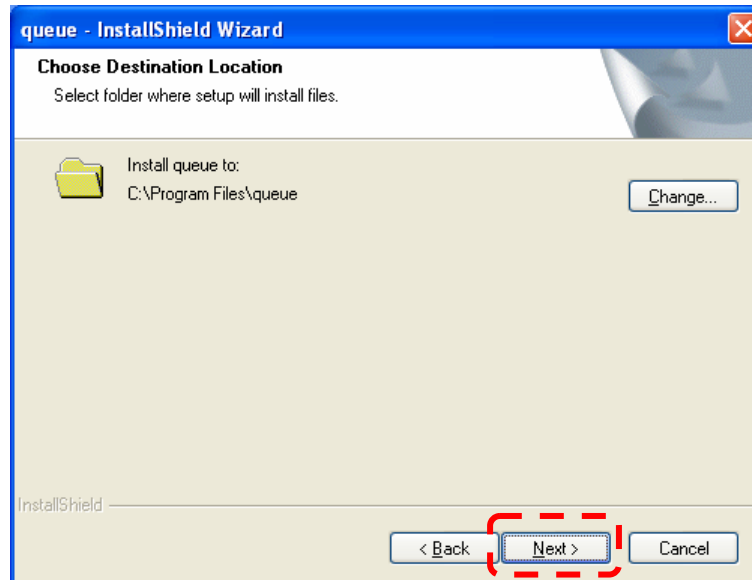
3.9. Select the preferred language and press [Next].



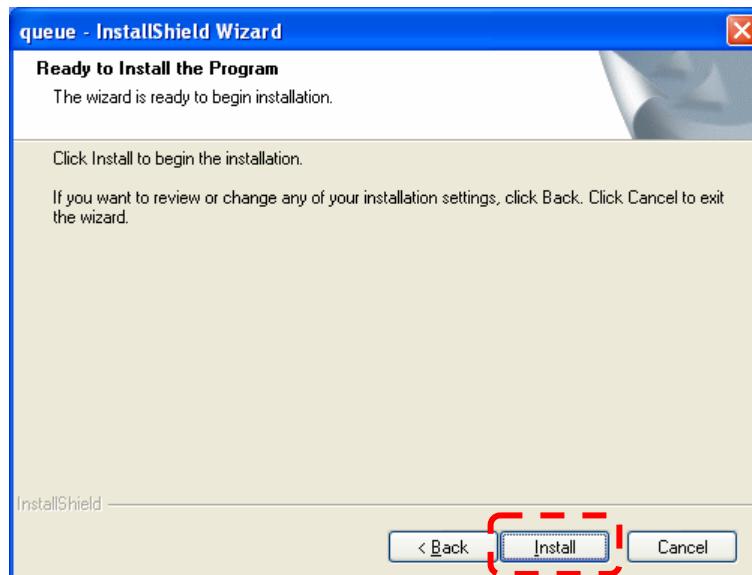
3.10. Read License agreement and press **[Next]**.



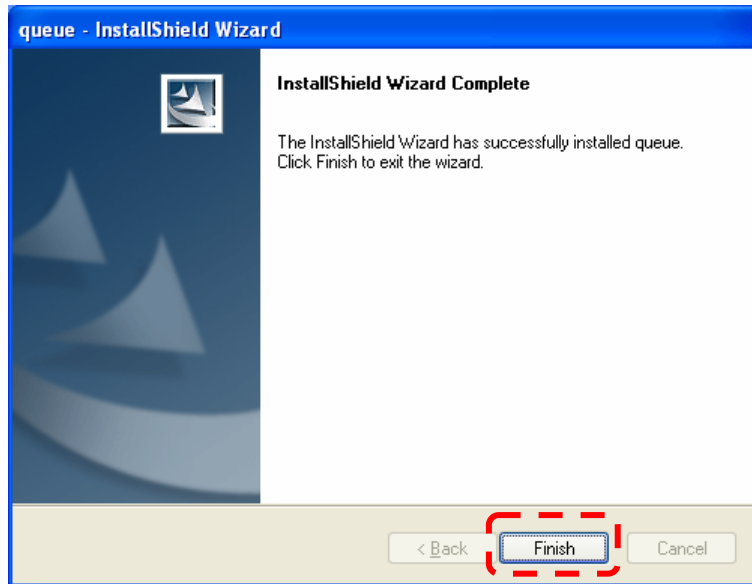
3.11. Click **[Next]** to install queue™ to the preset directory



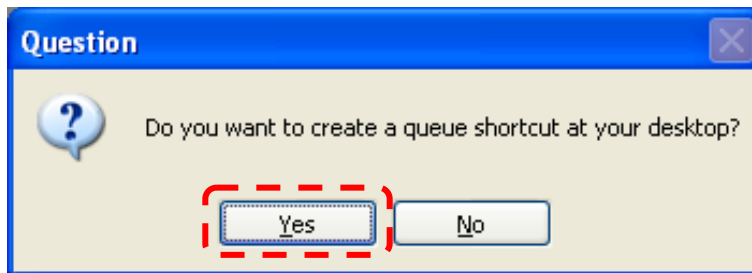
3.12. Press **[Install]** to begin the installation.



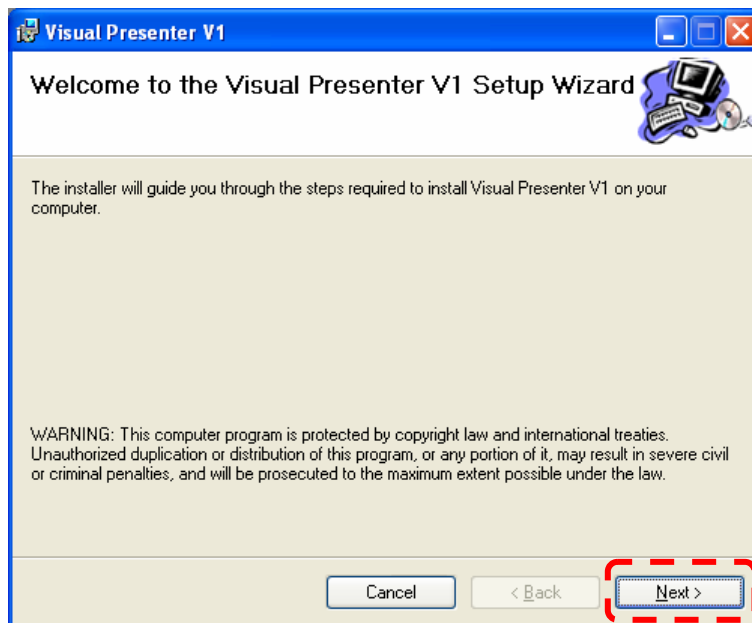
3.13. Press **[Finish]** to exit the wizard.



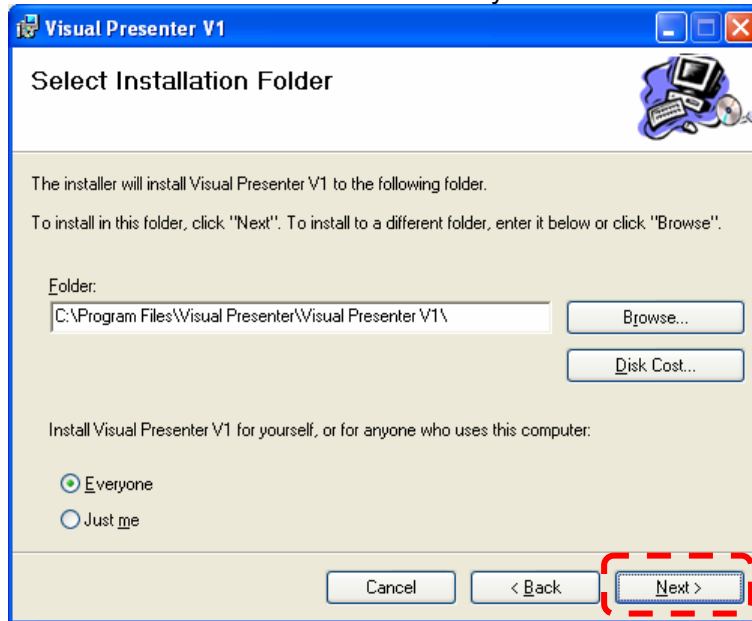
3.14. Press **[Yes]** to create a queue™ shortcut at your desktop.



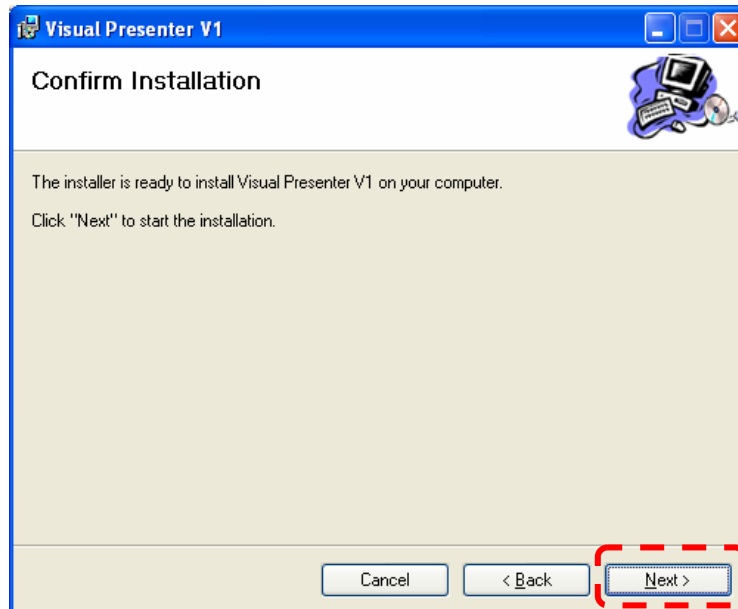
3.15. Press **[Next]** to start the **[Visual Presenter V1 Setup Wizard]**.



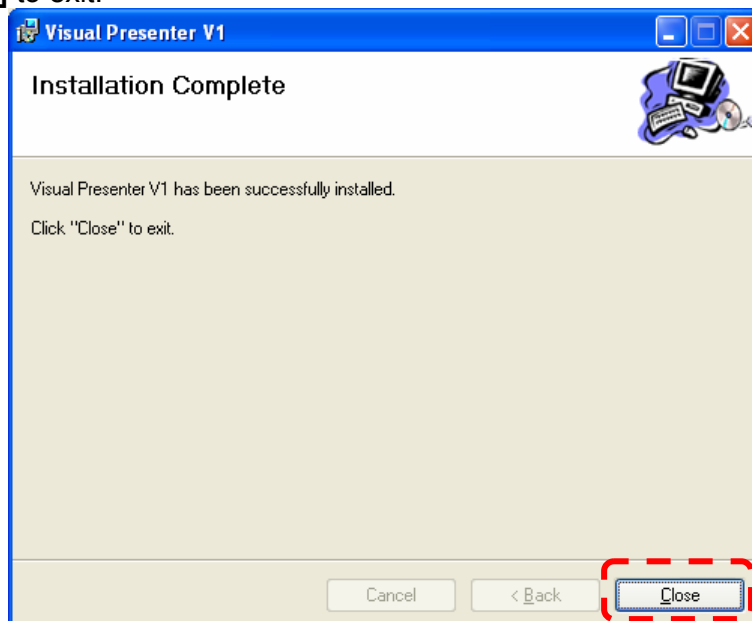
3.16. Press **[Next]** to install to the recommended directory.



3.17. Press **[Next]** to start the installation.

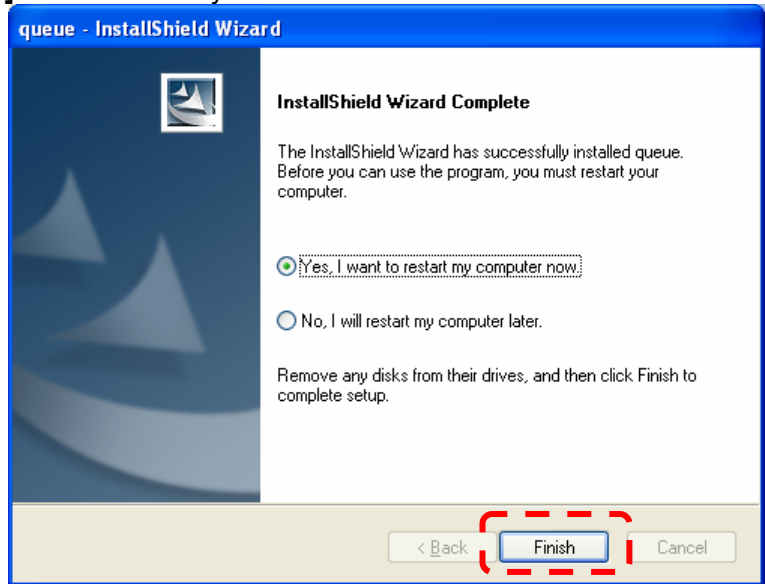


3.18. Press **[Close]** to exit.

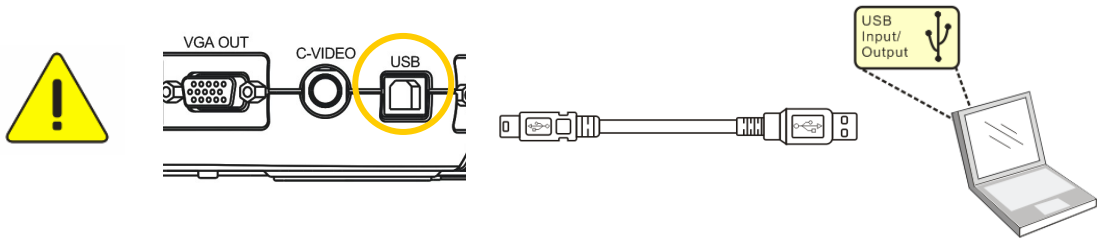




3.19. Press **[Finish]** to reboot the system now.



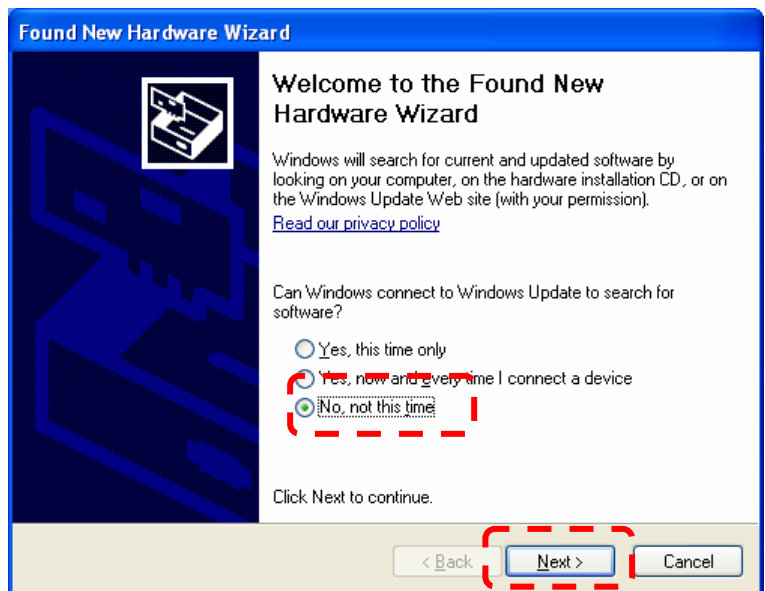
3.20. After reboot, please connect the USB cable on the Visual Presenter and computer.



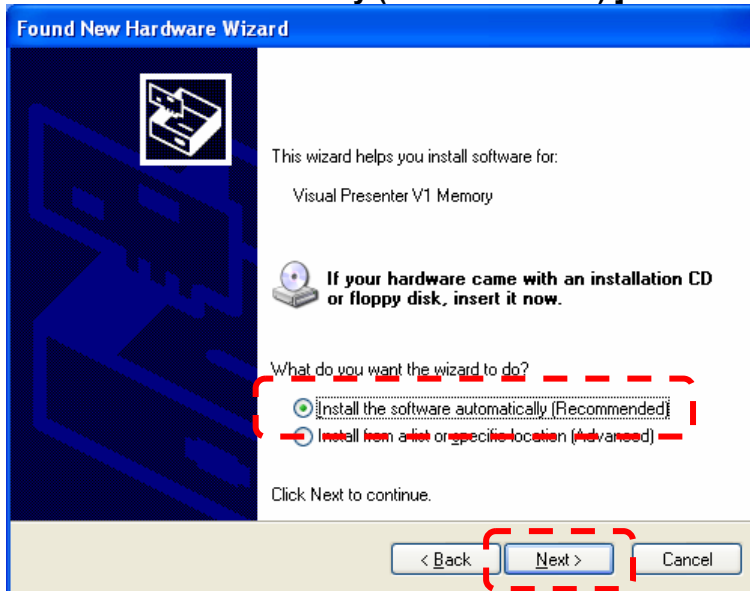
3.21. Then a window will show up about 6 seconds later, please select **[No, not this time]** and click **[Next]**



**<Very Important> Steps 3.21~3.24 should be repeated three times. Please make sure each of the steps is completed to finish the installation.**



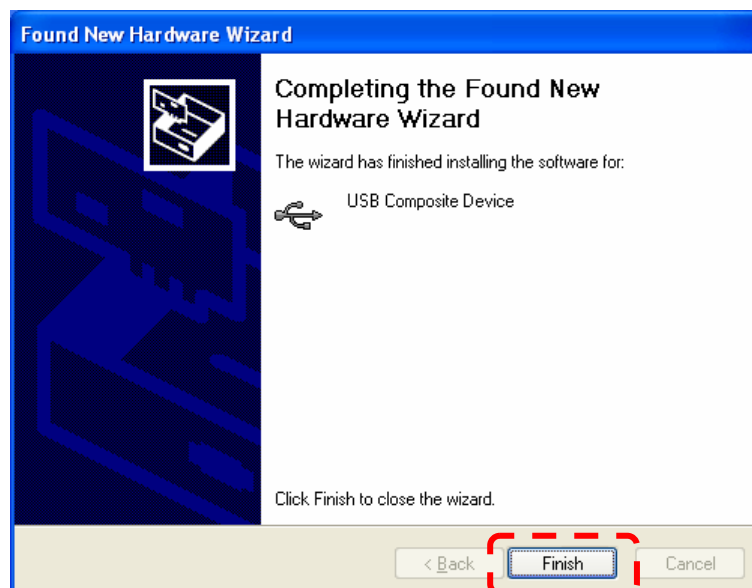
3.22. Select [Install the software automatically (Recommended) ] and click [Next].



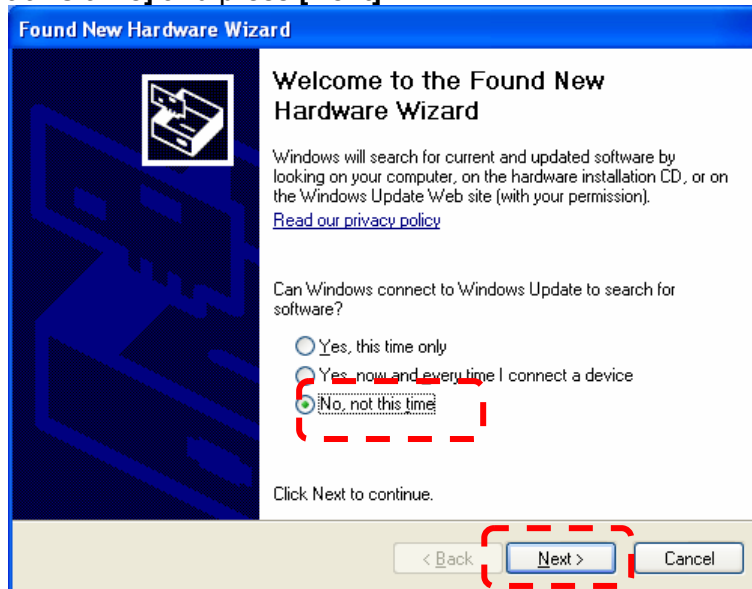
3.23. Press [Continue Anyway].



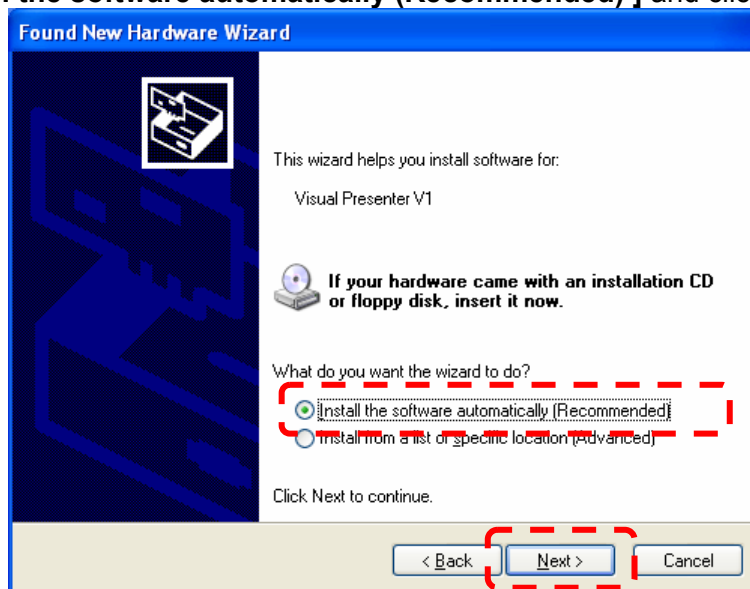
3.24. Press [Finish].



3.25. Select **[No, not this time]** and press **[Next]**.



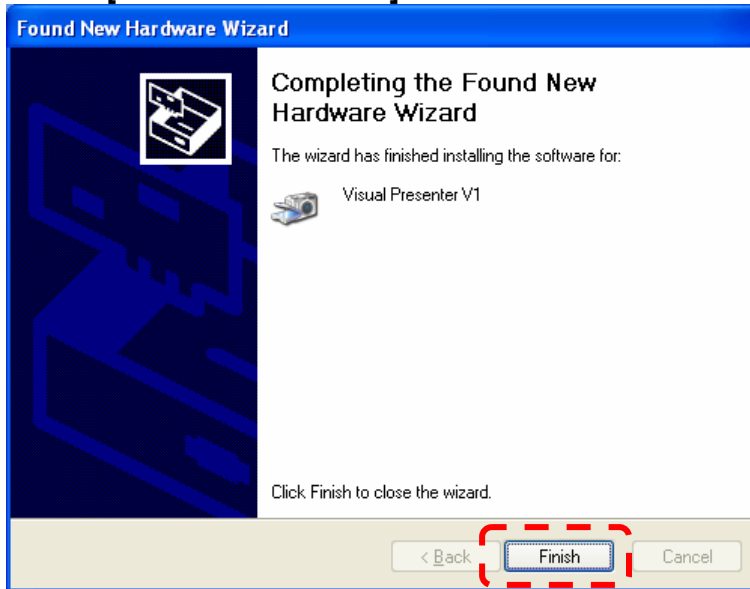
3.26. Select **[Install the software automatically (Recommended) ]** and click **[Next]**.



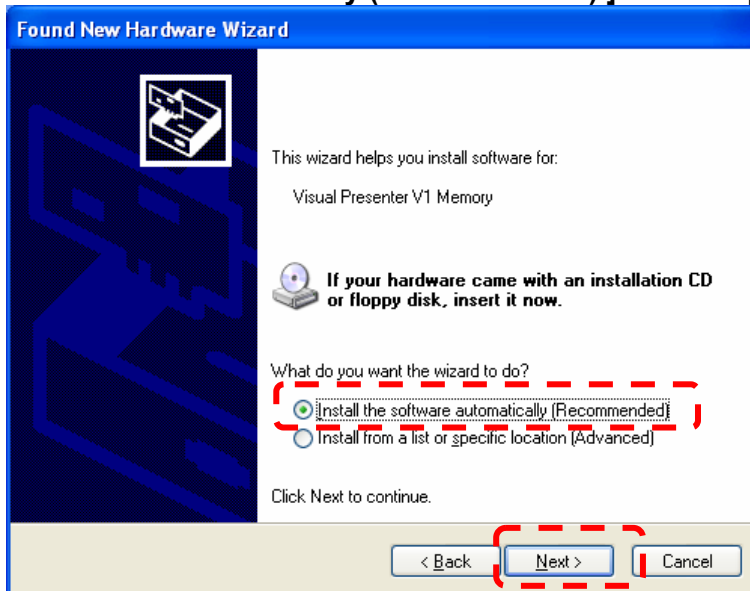
3.27. Press **[Continue Anyway]**.



3.28. Press **[Finish]** to finish **[Visual Presenter V1]** installation.



3.29. Select **[Install the software automatically (Recommended) ]** and click **[Next]**.



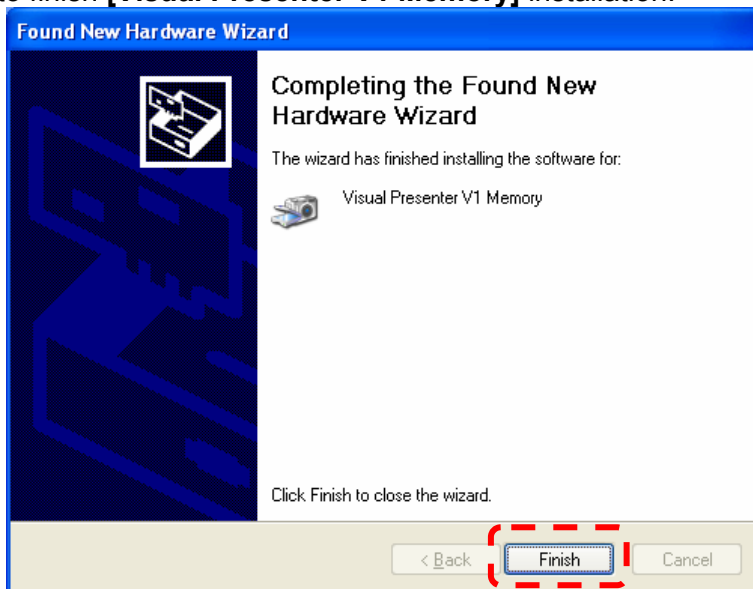
3.30. Select **[No, not this time]** and click **[Next]**.



3.31. Press **[Continue Anyway]**.

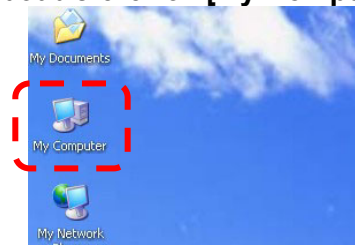


3.32. Press **[Finish]** to finish **[Visual Presenter V1 Memory]** installation.



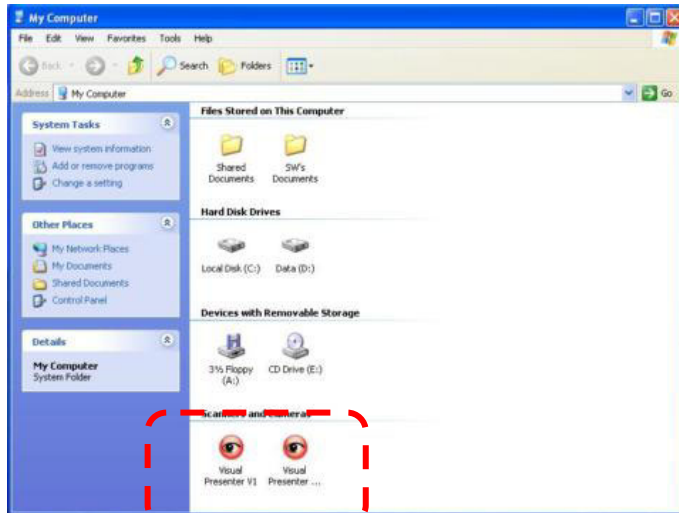
3.33. **Verifying the installation was completed**

3.33.1. Go to desktop and double-click on **[My Computer]**.



3.33.2. Check if **[ Visual Presenter V1]** and **[Visual Presenter V1 Memory]** appear on the window.

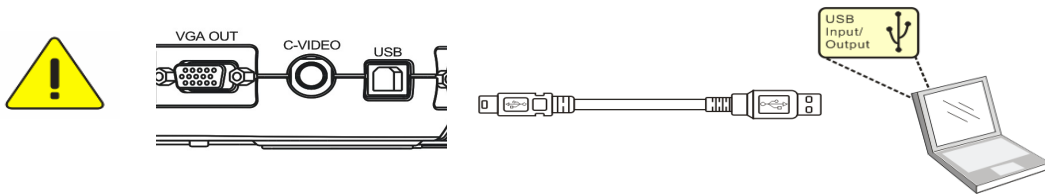
3.33.2.1. If yes, installation is successful and the procedure is finished.



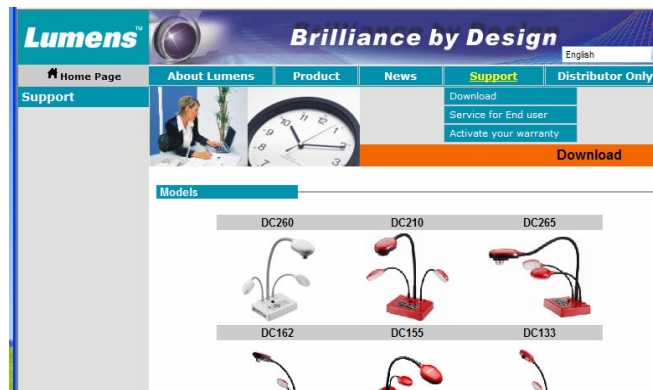
3.33.2.2. If no, proceed to the next step (Manual installation of queue™ (Windows XP).

## 4. Manual installation of queue™

4.1. <Very important > Please make sure the USB cable was connected.



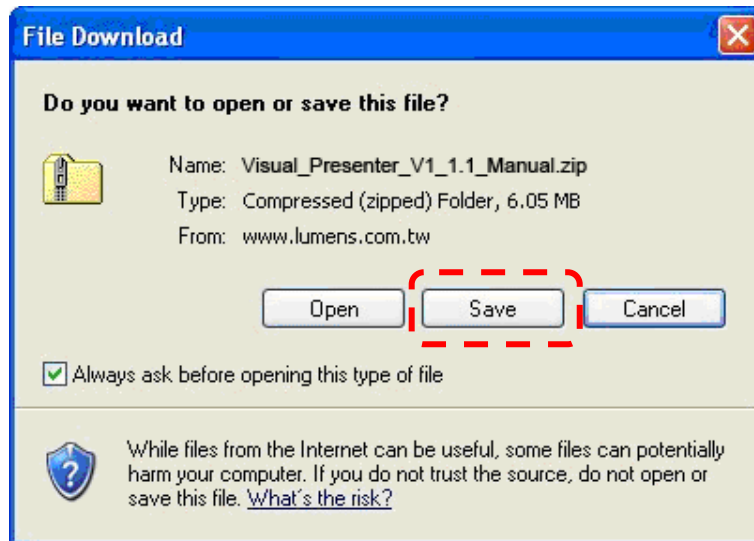
4.2. Go to Lumens™ website <http://www.lumens.com.tw/eng/goto.asp> and select the model you have purchased.



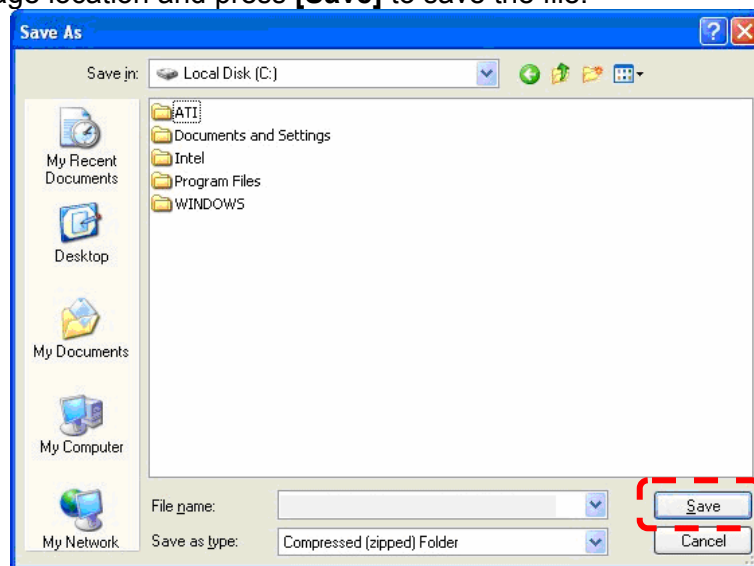
4.3. Find the [Visual\_Presenter Driver V1\_1.1 ] and click  to download.

Version	Description	Size	Download
PC 2.1.3+Driver [2009/04/23]	queue PC 2.1.3+V1 Driver	6.05 MB	
User manual for XP	English	2.1MB	
User manual for Vista	English	2.1MB	
<b>queue PC ( For installed users to upgrade )</b>			
Version	Description	Size	Download
PC 2.1.3 [2008/12/02]	NA	5.6 MB	
<b>Visual Presenter Driver</b>			
Version	Description	Size	Download
V1_1.1 [2009/06/30]	for Manual installation	1 MB	
V1_1.1 [2008/10/14]	for Automatic installation	1 MB	

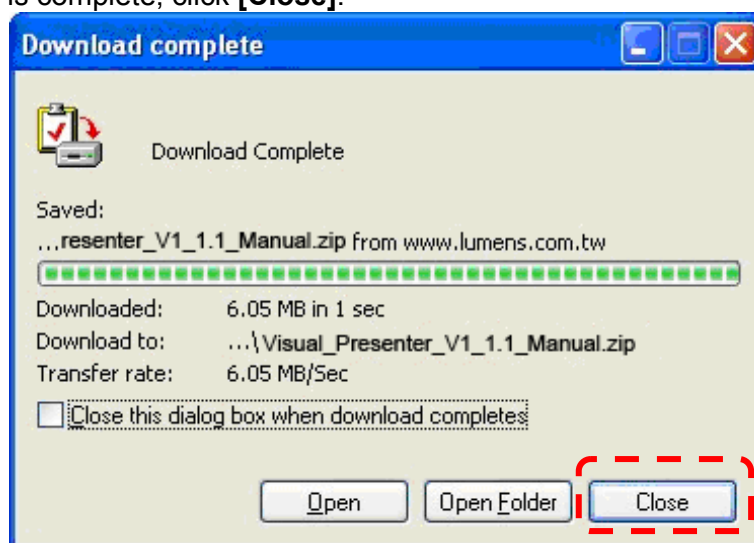
4.4. Click **[Save]**.



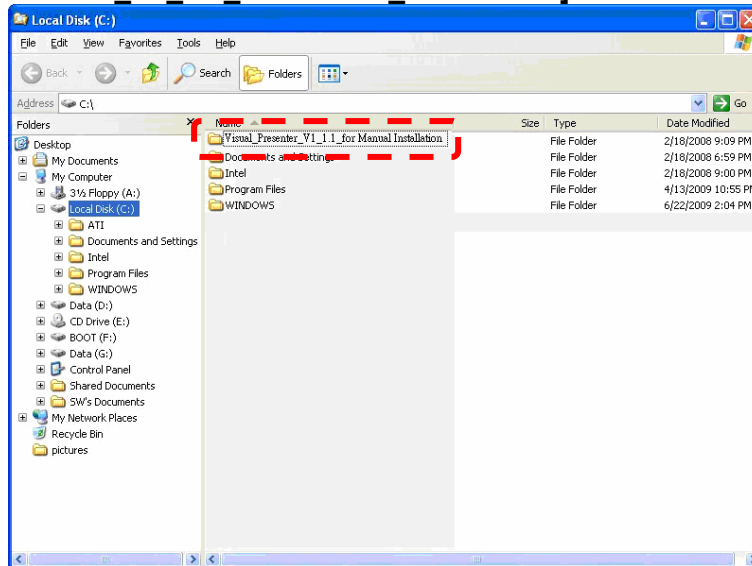
4.5. Select the storage location and press **[Save]** to save the file.



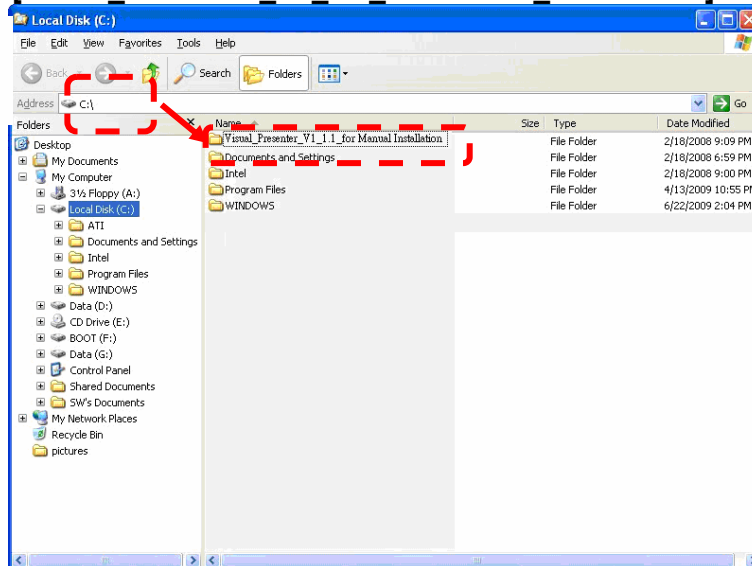
4.6. After download is complete, click **[Close]**.



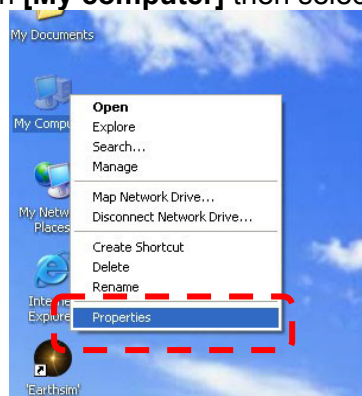
4.7. Find **[Visual\_Presenter\_V1\_1.1\_for Manual\_Installation]** and double-click to decompress it.



4.8. Move the folder **[Visual\_Presenter\_V1\_1.1\_for Manual\_Installation]** to **[C:\]**.

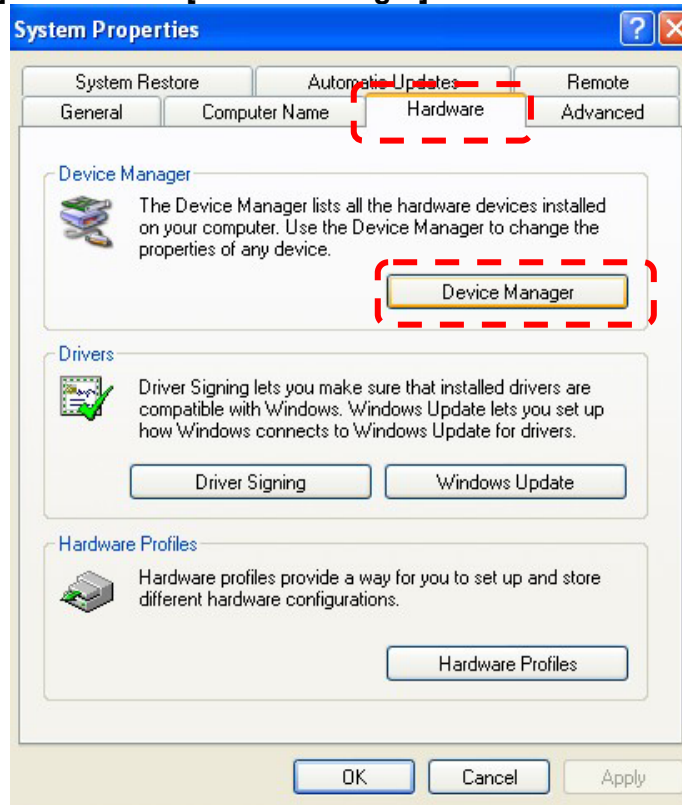


4.9. Go to desktop and right click on **[My computer]** then select **[Properties]**.

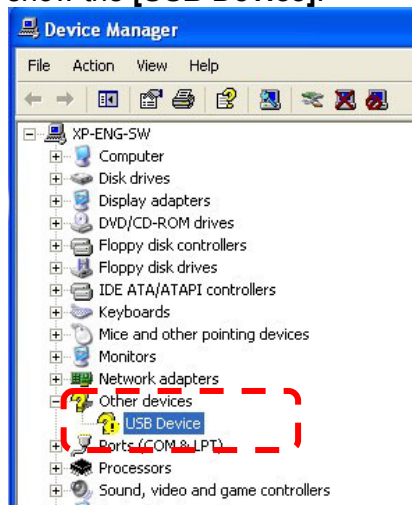




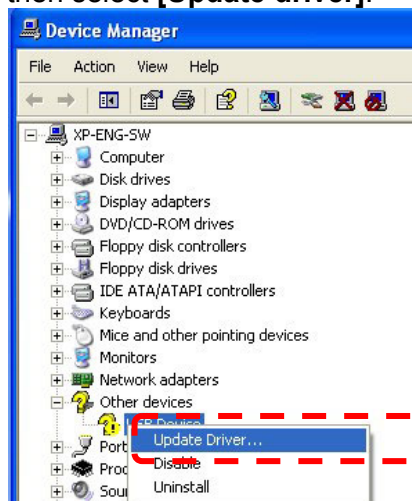
4.10. Select **[Hardware]** tab and click **[Device Manager]** button.



4.11. Click the **[Other devices]** to show the **[USB Device]**.



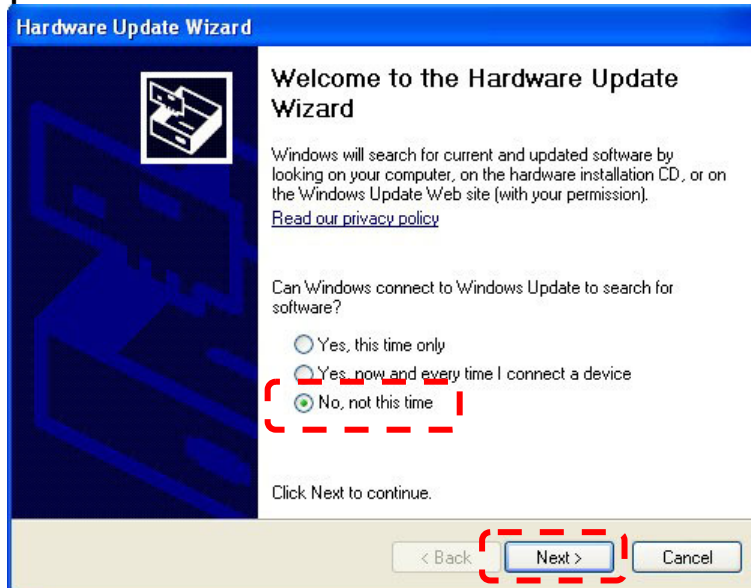
4.12. Right click on **[USB Device]** then select **[Update driver]**.



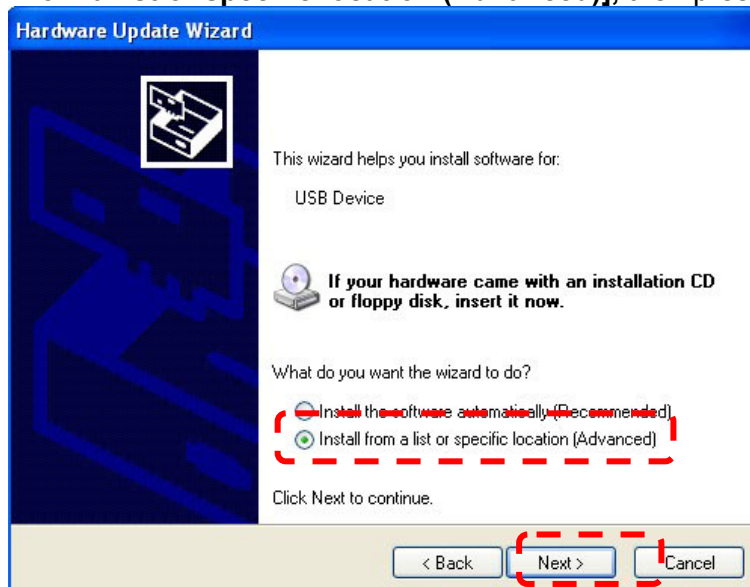
4.13. Select **[No, not this time]**, then press **[Next]**.



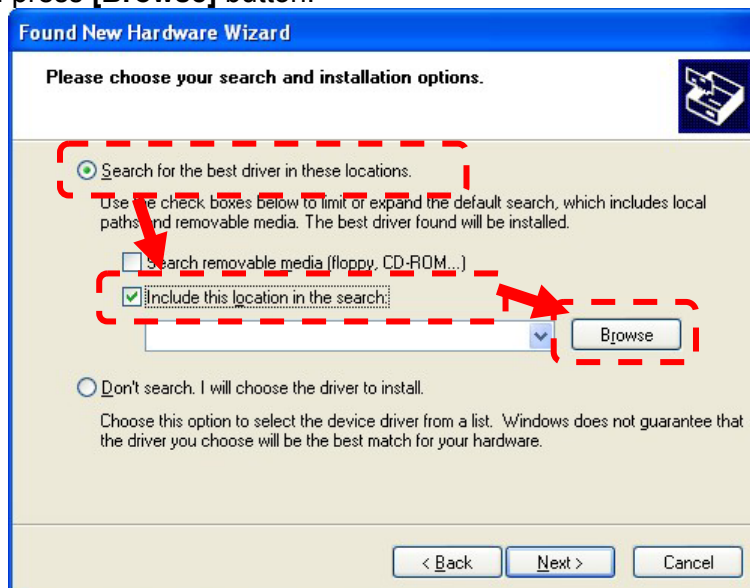
**<Very Important> This step will be repeated three times. Please make sure the step is complete to finish the installation.**



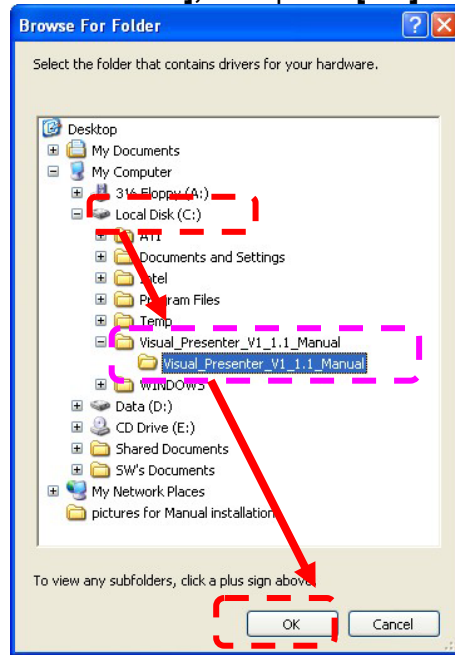
4.14. Select **[Install from a list or specific location (Advanced)]**, then press **[Next]**.



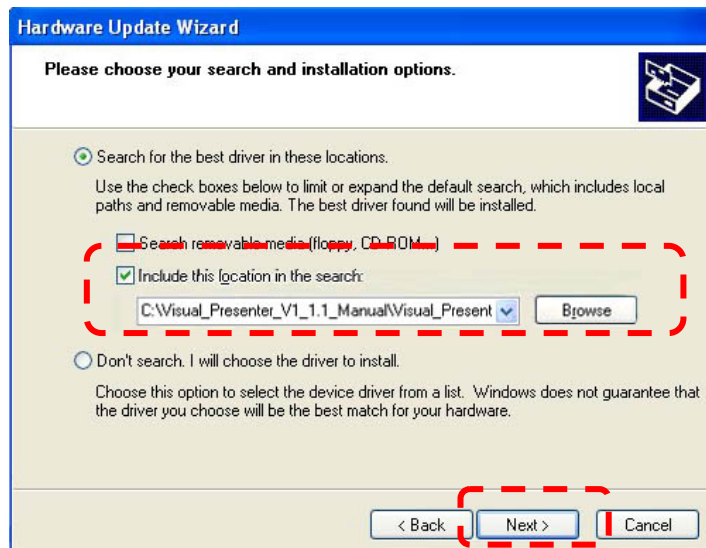
4.15. Select **[Search for the best driver in the locations]**, and select **[include this location in the search]**, then press **[Browse]** button.



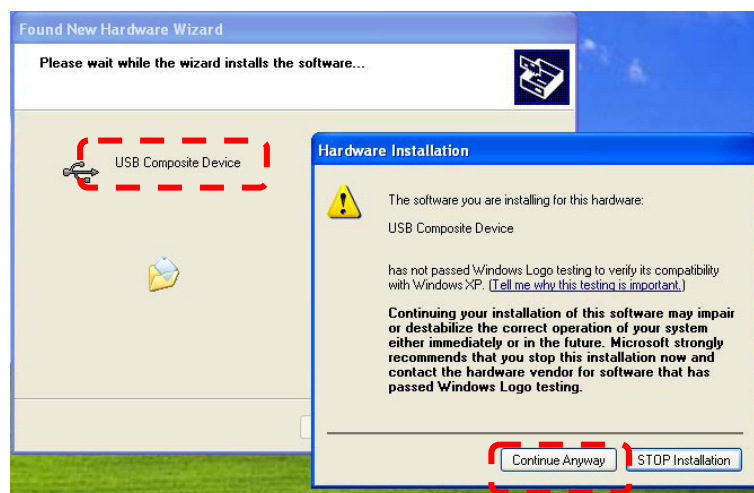
4.16. Select **[Visual Presenter V1 1.1 Manual]**, then press **[OK]**.



4.17. Click **[Next]**.



4.18. Press **[Continue Anyway]** to install **[USB Composite Device]**.



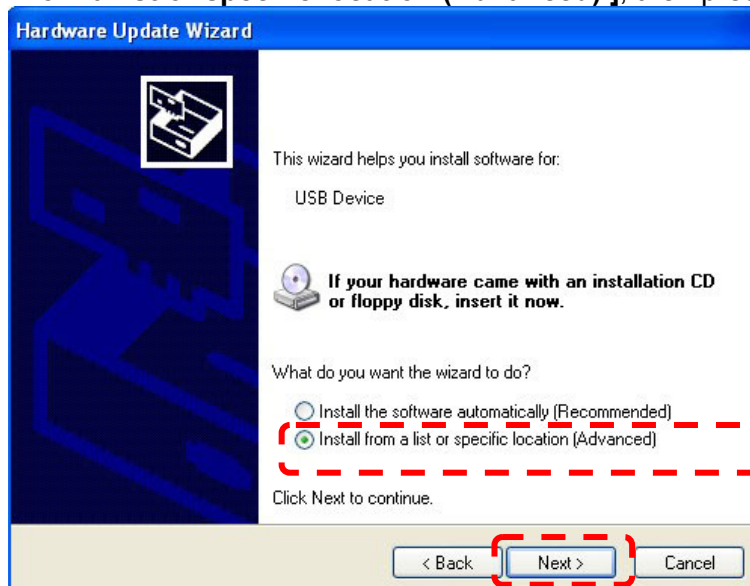
4.19. Press **[Finish]**.



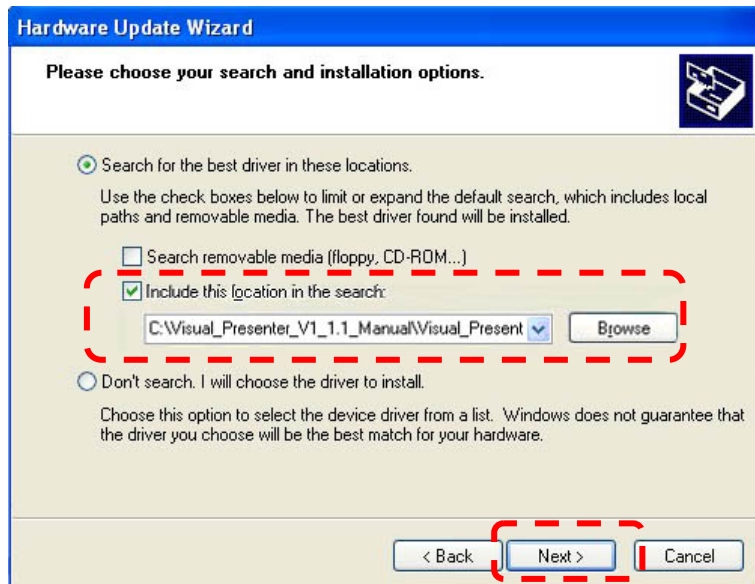
4.20. Select **[No, not this time]** then press **[Next]**.



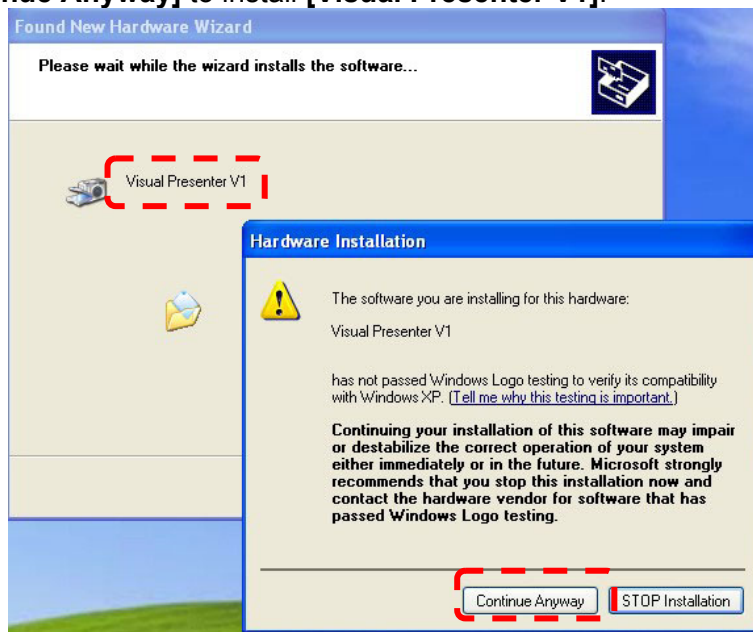
4.21. Select **[Install from a list or specific location (Advanced)]**, then press **[Next]**.



4.22. Press **[Next]**.



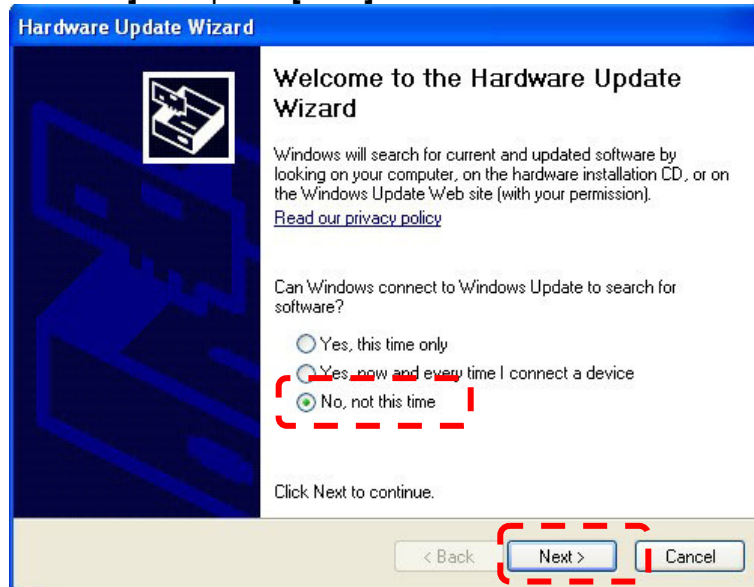
4.23. Process **[Continue Anyway]** to install **[Visual Presenter V1]**.



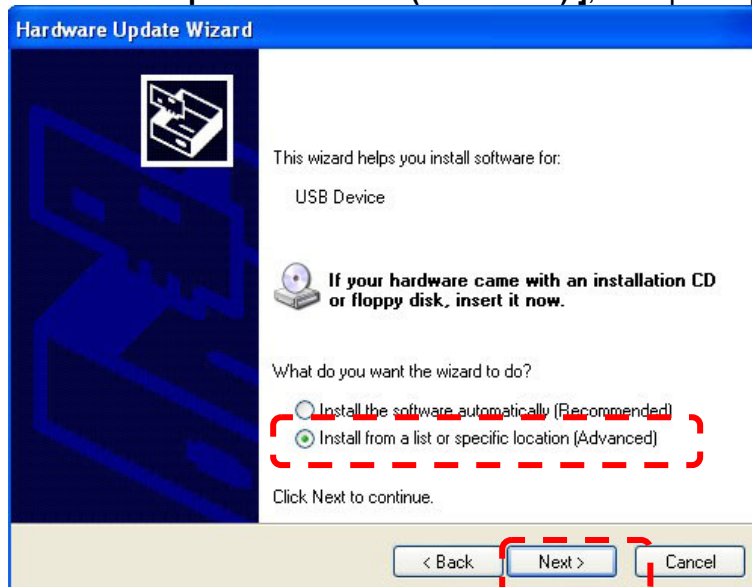
4.24. Press **[Finish]**.



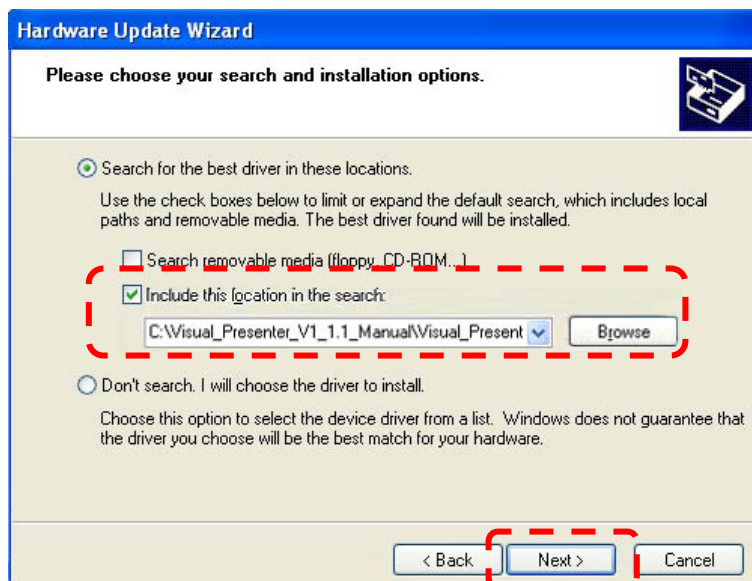
4.25. Select **[No, not this time]** then press **[Next]**.



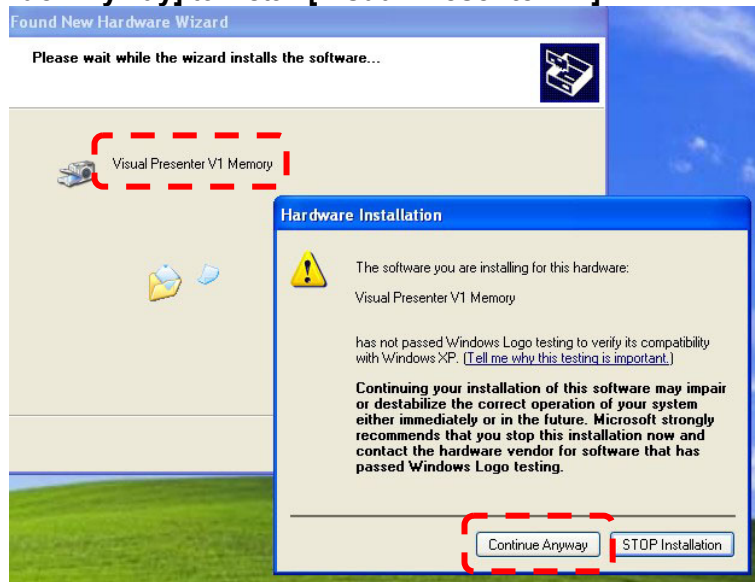
4.26. Select **[Install from a list or specific location (Advanced)]**, then press **[Next]**.



4.27. Press **[Next]**.



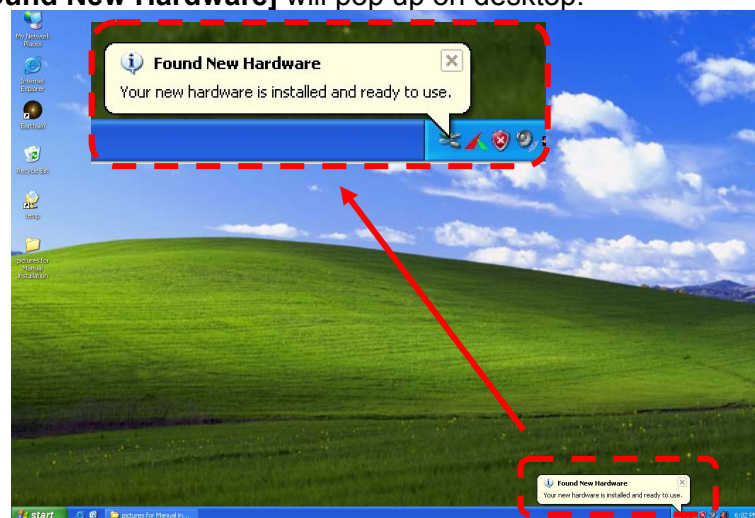
4.28. Process [Continue Anyway] to install [Visual Presenter V1].



4.29. Press [Finish].

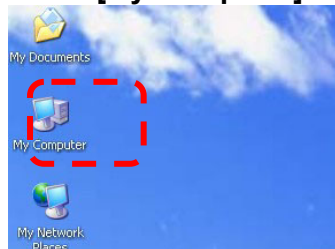


4.30. A message [Found New Hardware] will pop up on desktop.



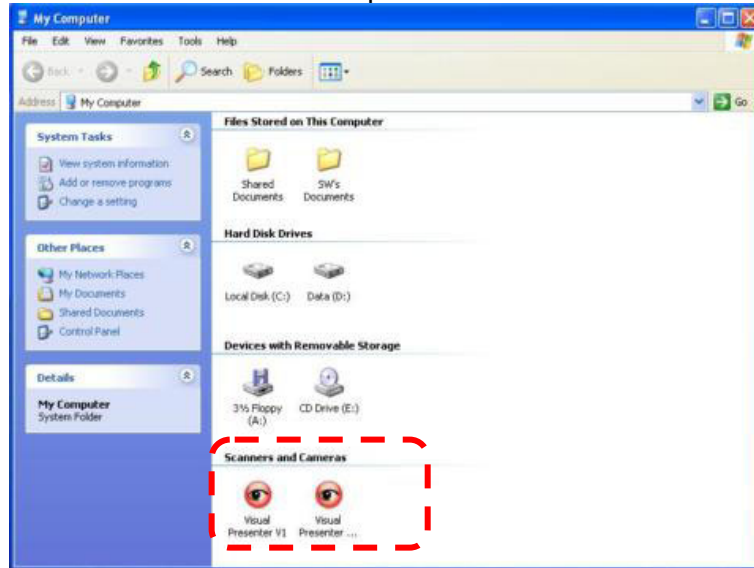
4.31. **Verifying the installation was completed.**

4.31.1. Go to the desktop and click **[My Computer]**.



4.31.2. Do you see **[Visual Presenter V1]** and **[Visual Presenter V1 Memory]**.

4.31.2.1. If Yes then close the procedure.

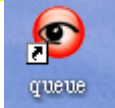


4.31.2.2. If NO. please contact your dealer or service center.



## 5. Start to use queue™

5.1. Double-click the queue™ icon on the desktop to launch queue™..
















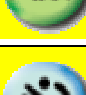
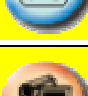
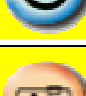
5.2. Click the queue™ icon to launch main functions menu



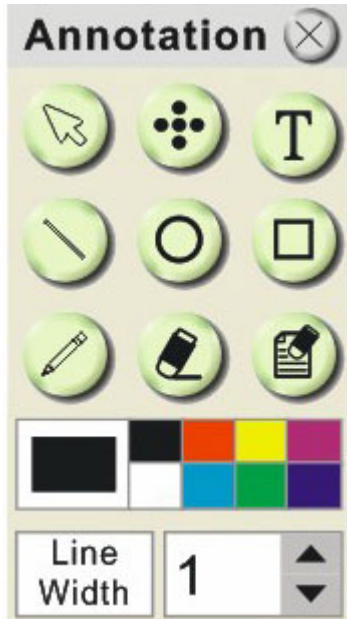
# 6. Operation






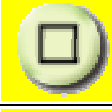





## 6.1 Main Menu



	<b>POWER:</b> Turn the visual presenter on / off		<b>LAMP:</b> Turn the lamp on / off
	<b>AUTO TUNE:</b> Automatically adjust the image for best possible quality.		<b>PREVIEW:</b> Display live images
	<b>OPTIONS:</b> Select video compression method and the audio source.		<b>BRIGHTNESS:</b> Adjust image brightness
	<b>MAIN:</b> Launch the main functions menu Right click on this icon to show information about the queue.		<b>ZOOM:</b> Zoom in/out from the image
	<b>CAMERA SETTING:</b> Launch the Camera Setting window to adjust live images		<b>ADVANCE:</b> Launch the advanced functions menu
	<b>FREEZE:</b> Freeze a live image		<b>ANNOTATION:</b> Display annotation tools
	<b>CLOSE:</b> Close the advanced functions menu		<b>TIME LAPSE PHOTOGRAPHY:</b> Capture images at a pre-set intervals
	<b>RECORD:</b> Record videos		<b>CAPTURE:</b> Capture still images

## 6.2 Annotation Tools



ICON	Description
	Pointer tool
	Laser tool
	Insert text
	Draw a line
	Draw an ellipse
	Draw a rectangle
	Free-hand drawing tool
	Eraser
	Clear all
	Select pen color
	Select line thickness

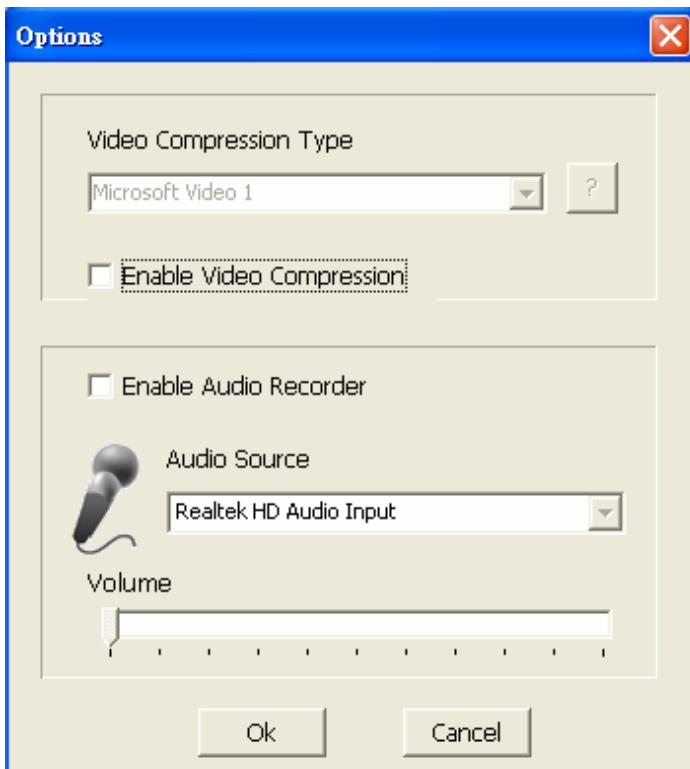
## 6.4 Camera Settings

Control the live image via the **Camera Settings** interface. The operating procedure is the same as the **remote control** and **control panel** of the **Visual Presenter**. Refer to the [Visual Presenter user manual](#) for more information.

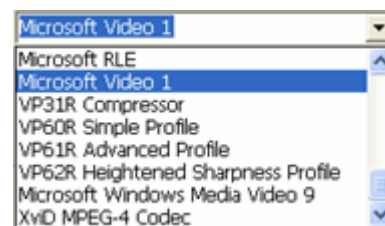
**<Note> The display of the button may vary depending on product functions. An inactive button will grey out.**



## 6.5 Options



- **Video Compress Codec Format** : Set the video format.
- **<Note>You need to enable the [Enable Video Compress] before setting.**



- **Enable Video Compress** : Enable the video format setting.
- **Enable Audio Recorder** : Enable the audio record device and set the audio source.

## 6.6 Time Lapse

The screenshot shows a 'Time Lapse' dialog box with the following fields and callouts:

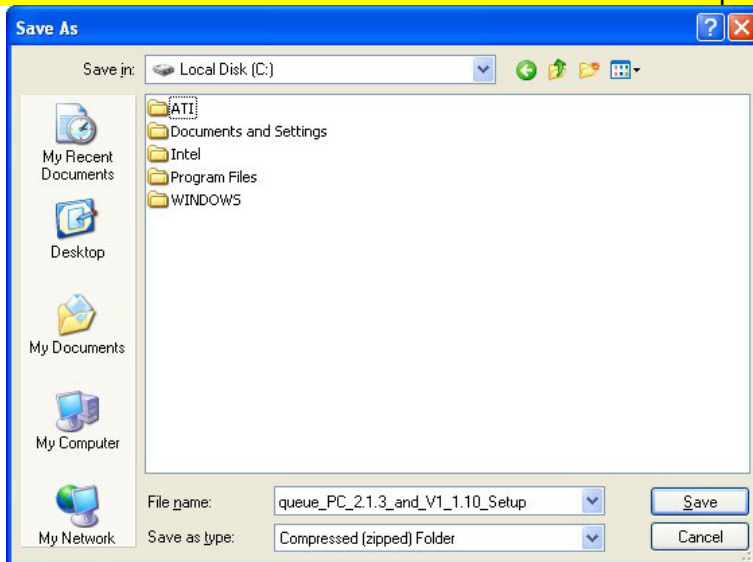
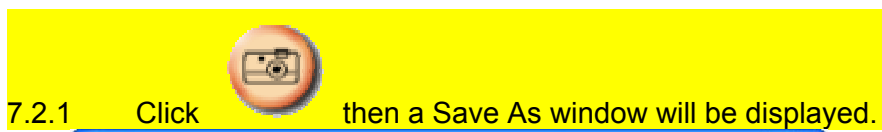
- File Directory:** C:\Time\_Lapse. Callout: Select file directory to change the default.
- File Name:** LumenS -YYYY-MM-DD-HH-MM-SS .jpg. Callout: Specify a file name..
- Select the start time:** Includes radio buttons for 'Right Now' and 'Start at'. The 'Start at' option is selected with a date of 2009/07/01 and a time of 16:48:14. Callout: Set the start time.
- Time Lapse Settings:** Includes radio buttons for 'Capture Interval', 'Capture Time', and 'Capture Frame'. The 'Capture Interval' option is selected with a value of 3600 and unit of Seconds. Callout: Capture images at a pre-set intervals .
- Buttons:** 'Ok' and 'Cancel' buttons are located at the bottom.

# 7. Descriptions of Functions

## 7.1 Start the Visual Presenter

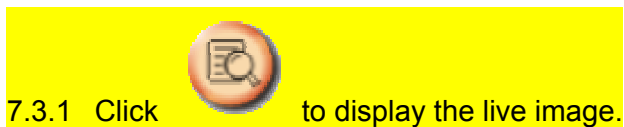


## 7.2 I would like to capture images

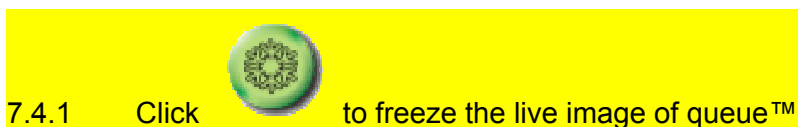


7.2.2 Key in the file name then click **[Save]**.


## 7.3 I would like to display the live image



## 7.4 I would like to freeze the live image



## 7.5 I would like to annotate the displayed image

7.5.1 Click  to open the annotation tools.

7.5.2 The default mode is [Pointer Tool]. You can select another annotation tool.



7.5.3 Select a color for drawing.



7.5.4 Set the value of Line width (If the value is higher, the line is thicker).



7.5.5 Mark or annotate the displayed image.

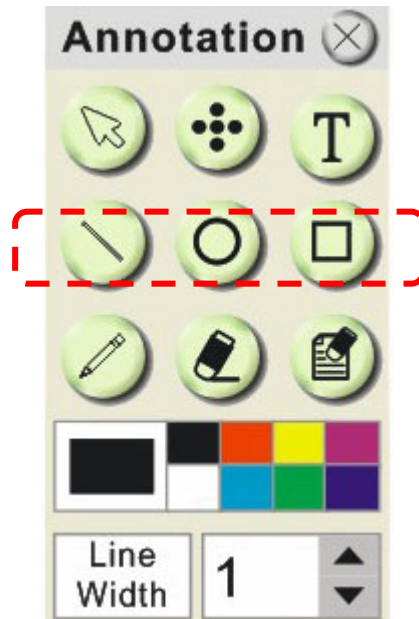


<Remark> You can Click  to capture images that you draw.

## 7.6 I would like to add textual annotation to images

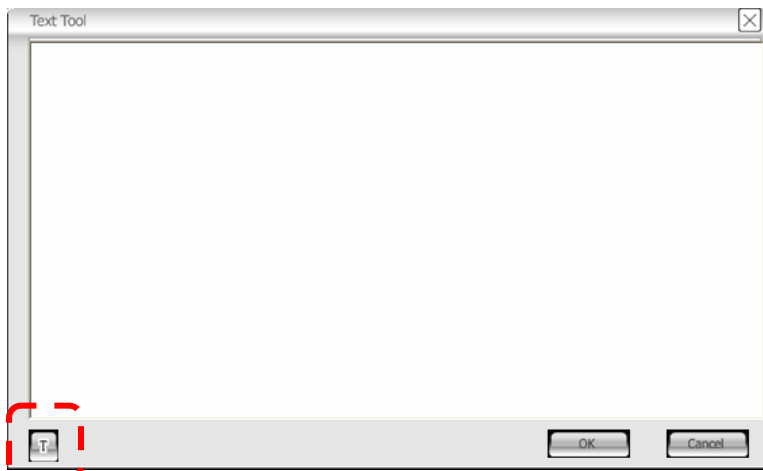
7.6.1 Click  to open the annotation tools.

7.6.2 Select **[Text Tool]**.



7.6.3 The **[Text Tool]** window will pop up when you click the screen for the text to be added in.

7.6.4 Enter the text in blank fields and click **[OK]**.




7.6.5 Click **[T]** to change font's settings (size/color/effect).

<Remark> You can Click  to capture images that you draw.



## 7.7 I would like to record video

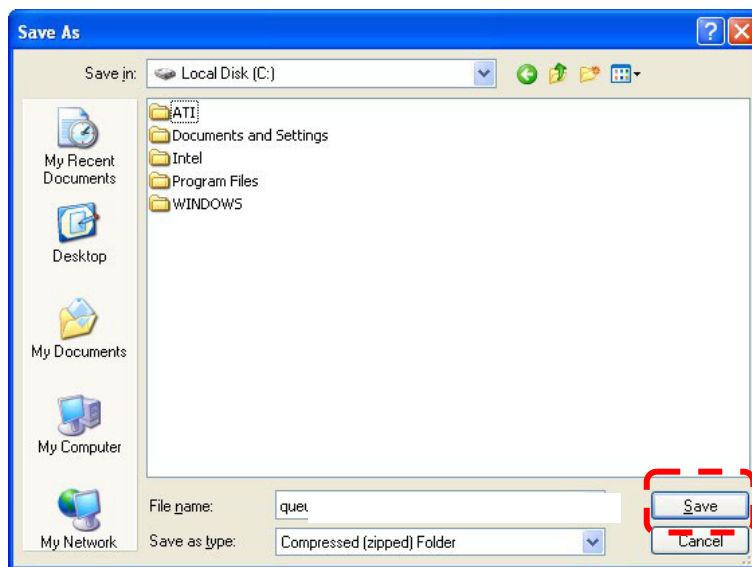
7.7.1 Click  to open the video tool.

<NOTE> You can click  to change video format and audio source setting, more details please refer to [6.4 Options](#).

7.7.2 Click **[Record]** then a window will be displayed.



7.7.3 Key in the file name then click **[Save]** to start recording. <insert image>



7.7.4 Click **[Stop]** to stop recording.



7.7.5 Click  to close the record tool.

# 8. Uninstall

## 9.1 Uninstall queue™

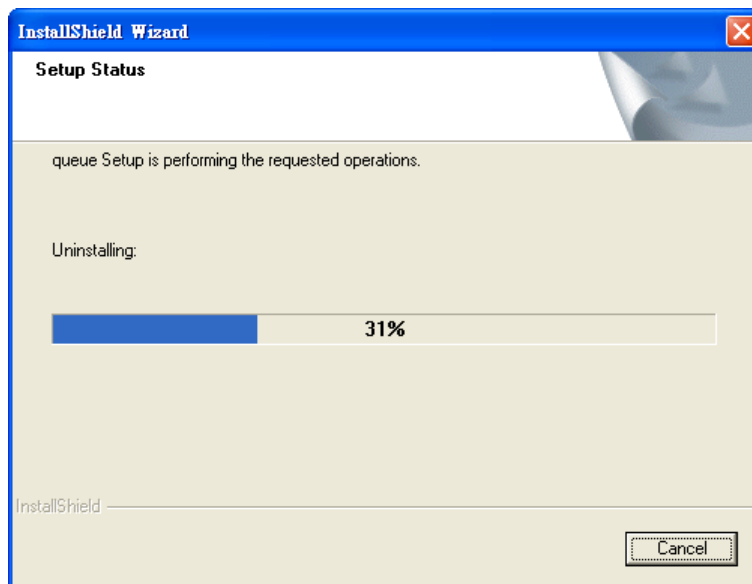
9.1.1 Select **[Uninstall queue]** in the **[Program]** to uninstall.



9.1.2 Press **[OK]**.



9.1.3 The system will start running uninstall and removing related components.

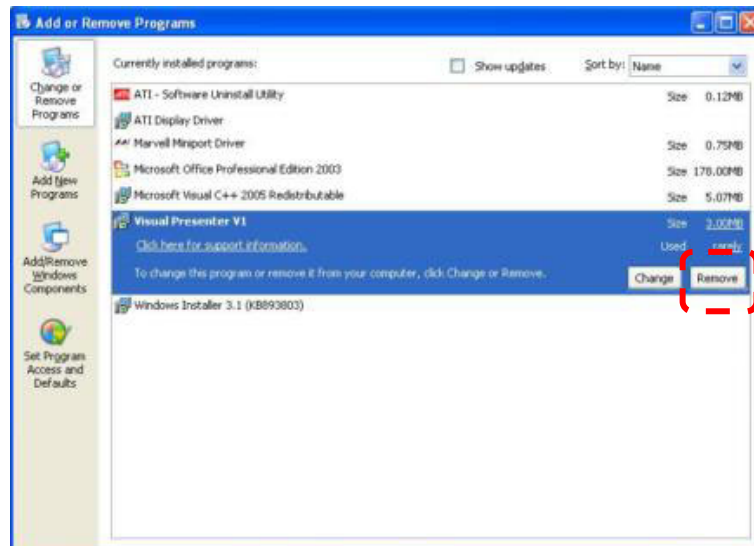


9.1.4 The uninstallation was completed, and the system will automatically exit the uninstall wizard.

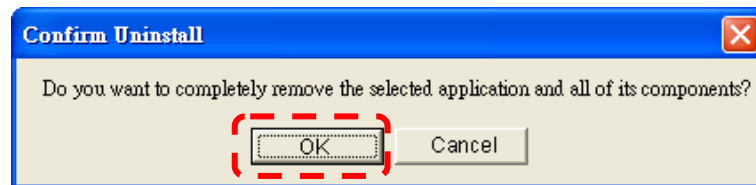
## 9.2 Uninstall USB Driver (Case of Windows XP)

9.2.1 **[Program]** → **[Control Panel]** → **[Add or Remove Programs]**.

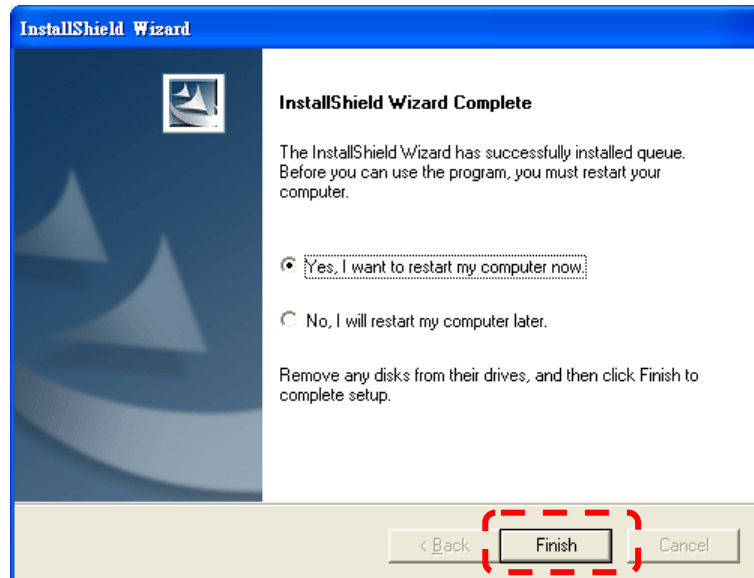
9.2.2 Find **Visual Presenter V1**, and then click **[Remove]**.



9.2.3 Press **[OK]**.



9.2.4 Once the un-installation is done, please click **[Finish]** to reboot the computer.



# 9. Troubleshooting

## 10.1 Q: Installation is complete. Reconnect Visual Presenter to show [Found New Hardware].

**Solution :**

1. Press **[Cancel]** to skip this interface.

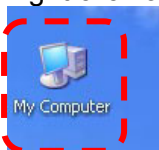


2. Please switch to another USB port of the computer until **[Found New Hardware]** does not show up anymore.
3. If it appears again, return to [Step 1](#).

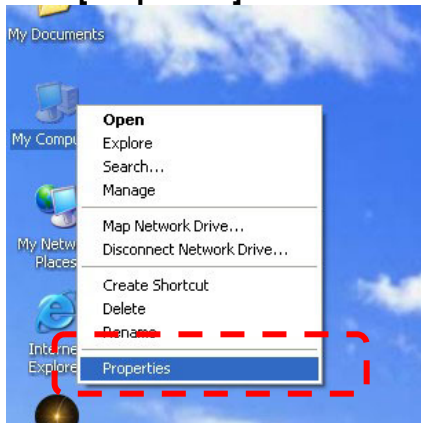
## 10.2 Q. No Image display when launch queue™.

**Solution :**

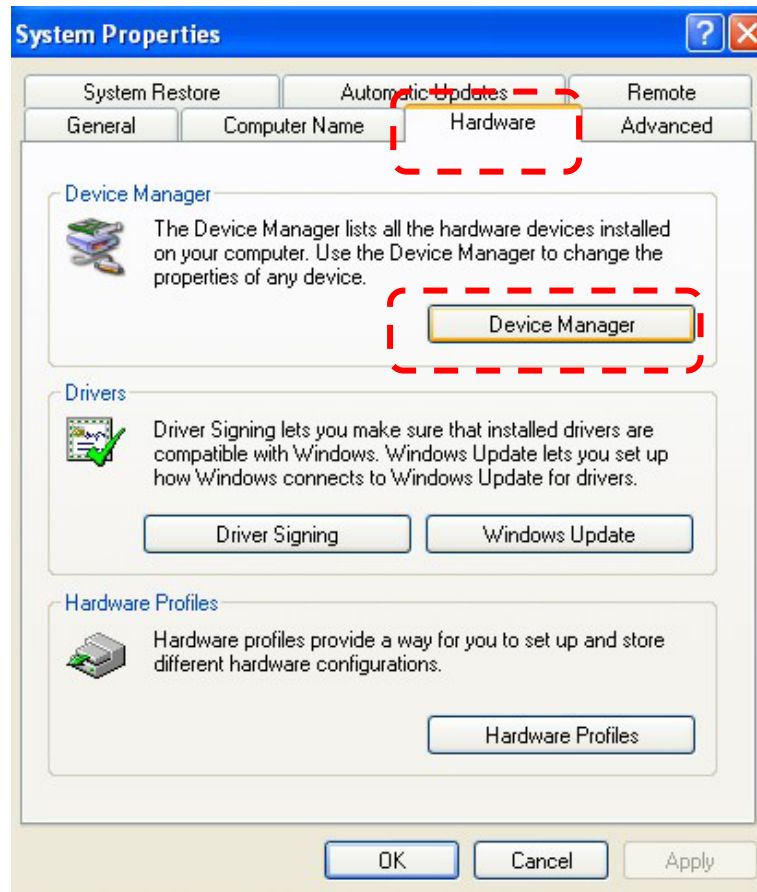
1. Please check if USB cable is connected between document camera and computer.
2. Please try to change the DIP switch setting to **[XGA]** mode. Refer to the [Visual Presenter user manual](#) for more information.
3. Please make sure the driver installation is successful.
  - Right click on **[My Computer]** on you desktop.



- Select **[Properties]** from the list.

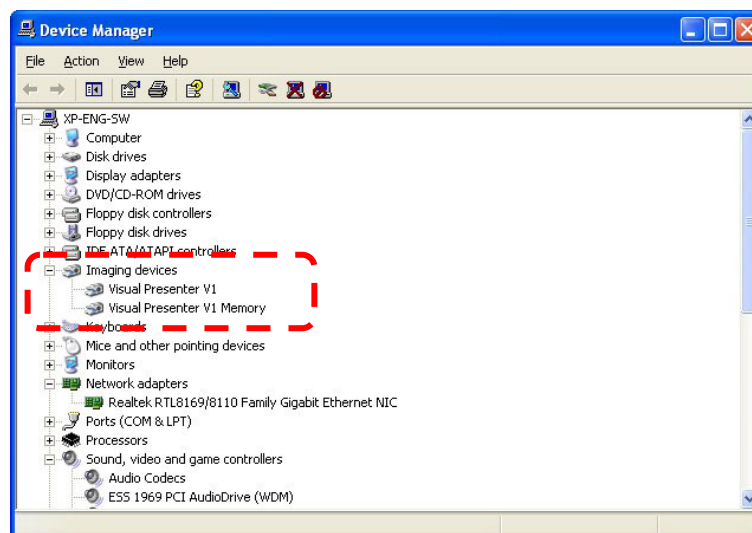


- You will see below image that Hardware tab highlighted, Click on the **[DEVICE MANAGER]** button.



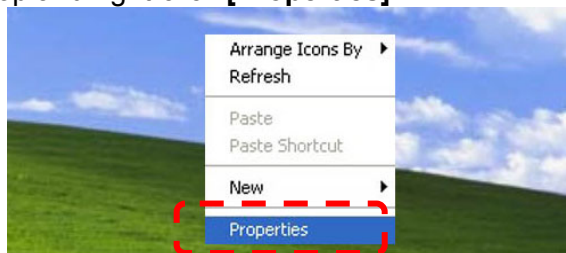
- A box should open up as shown. **[Device Manager]** contains all your hardware that you have installed.

If you can see **[Visual Presenter V1]** and **[Visual Presenter V1 Memory]** under **[Image devices]** when you connect USB cable between document camera and computer, it means the installation is successful.

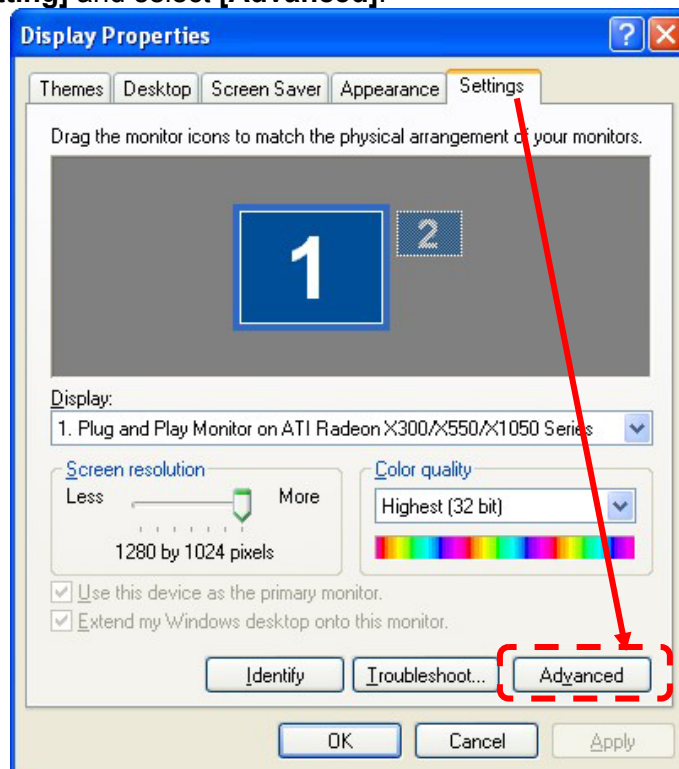


4. Please confirm if you turn on **[Hardware acceleration]**.

- Go to desktop and right-click **[Properties]**.



- Click **[Setting]** and select **[Advanced]**.



- **[Troubleshoot]** to turn the **[Hardware acceleration]** to full.

