

User's Manual

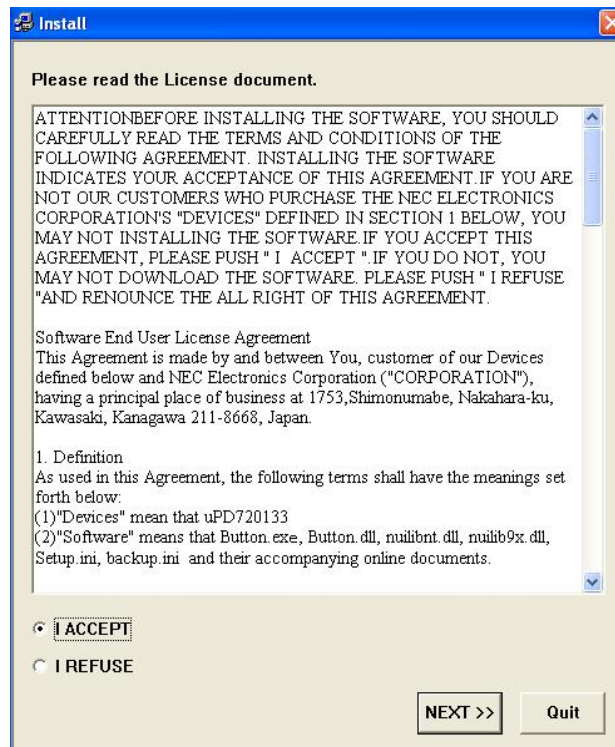
**Button Application Software
For NEC uPD720133**

Introduction

This application software allows the user to backup or restore data to and from the enclosure by simply pushing a button.

Install Application

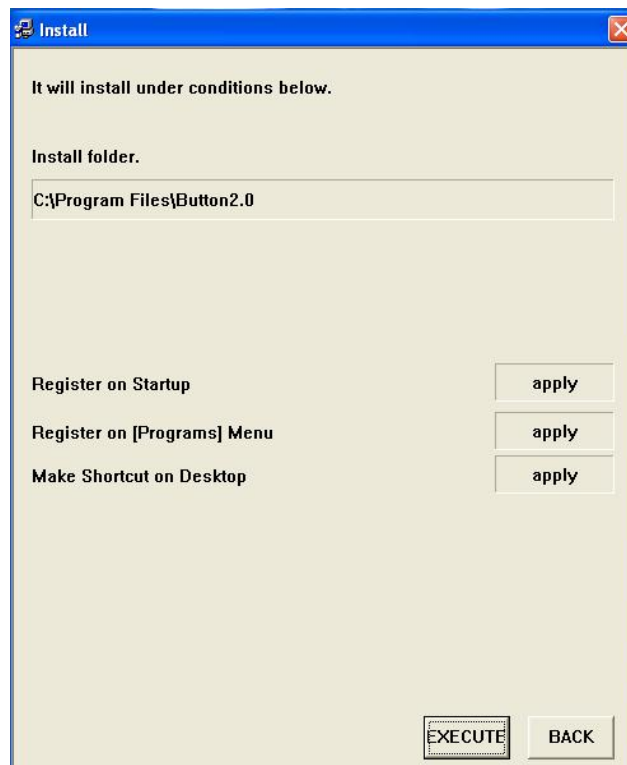
1. Simply run **INSTALL.EXE** in **WEC\wPD720D133\BACKUP_API** folder of the Driver CD.
2. Select **"I ACCEPT"** and click the **NEXT >>** button to continue with installation.



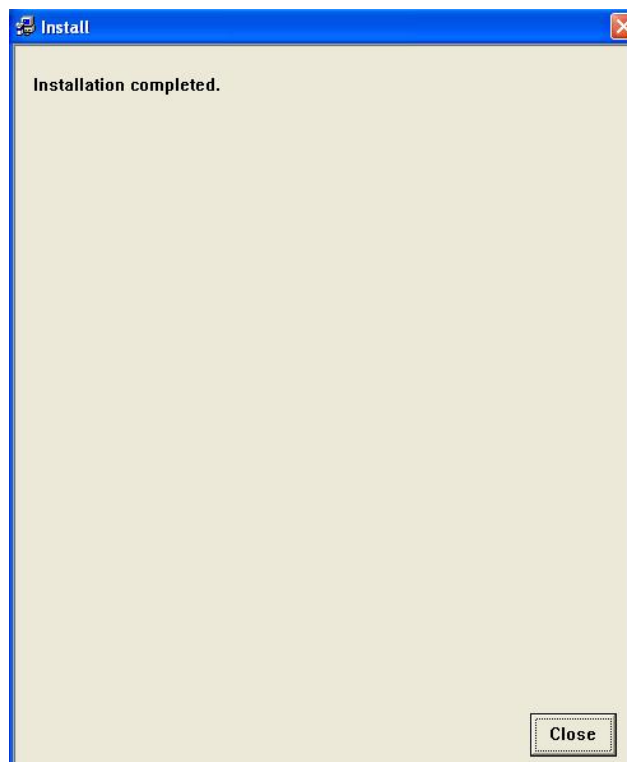
3. Tick the checkboxes if you would like to launch this application at the same time when OS starts. In the next OS boot-up, this application will start automatically. Click **NEXT >>** button to continue.



4. Click the **EXECUTE** button to continue.

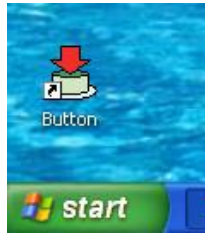


5. Click **Close** to complete installing the Button application software.



Launch Application

1. At Windows Desktop, you will find the **Button** icon. Double click the **Button** icon to launch the Button application.



2. You will notice the Button application is now resided at the notification area of the Windows Taskbar.

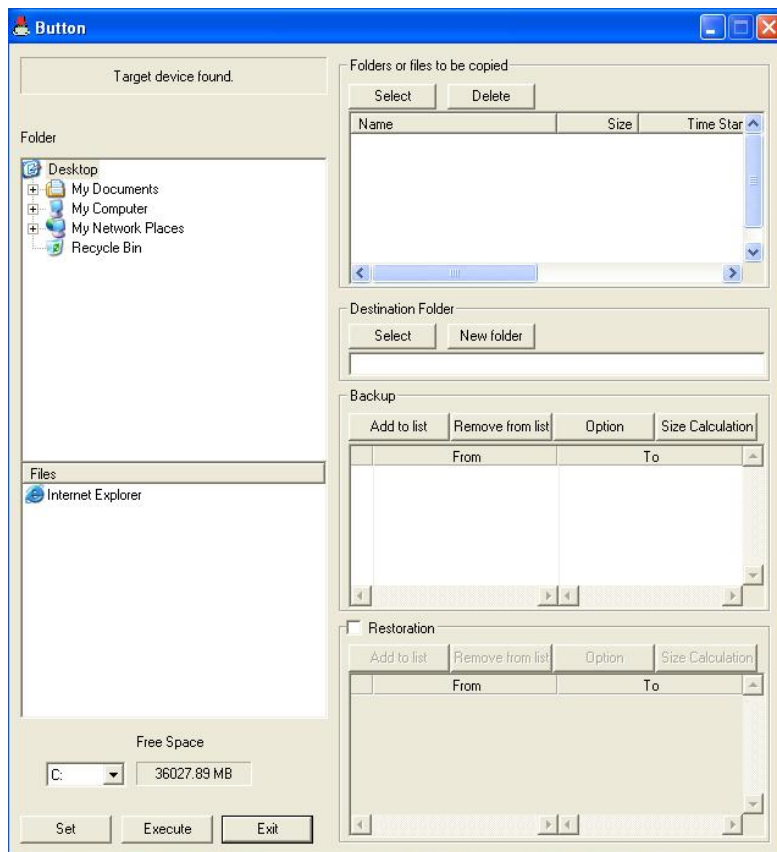


3. Right-click on the **Button** icon at the Windows Taskbar. The menu for the Button application will be displayed.

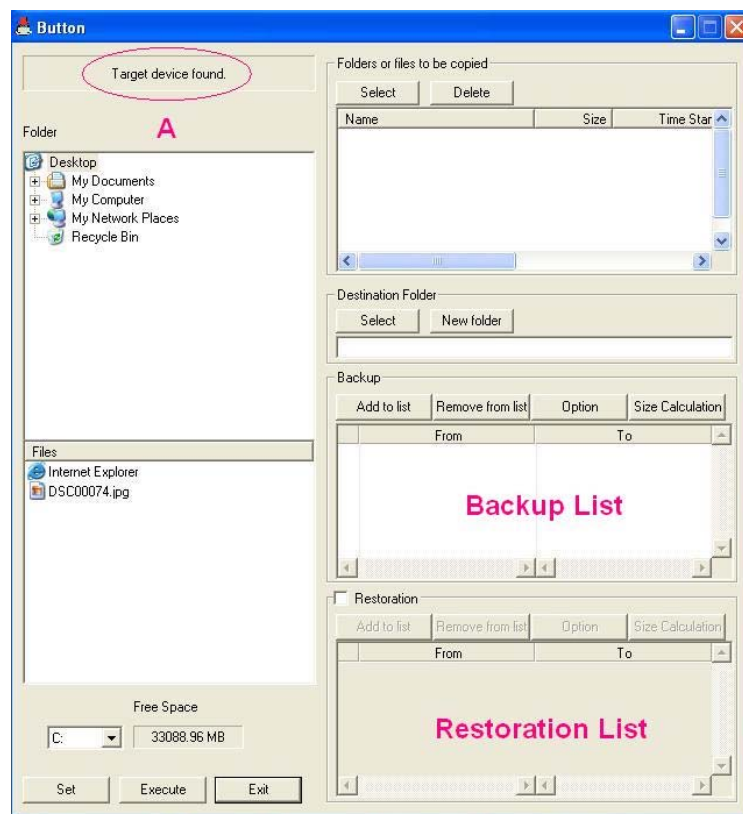
[Backup] : Launch Button application
[Cancel] : Close Menu
[End] : Close application



4. Select **Backup** at the menu, the Button application window will pop up as shown below.

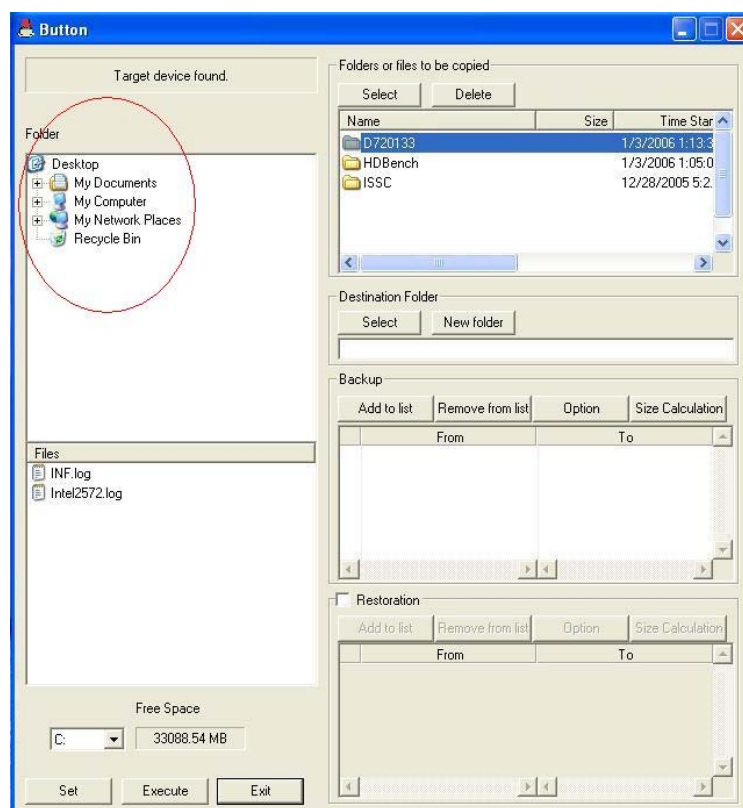


5. If the enclosure is already connected to the computer and the driver has been installed correctly, the Button application will automatically detect the enclosure as shown below.

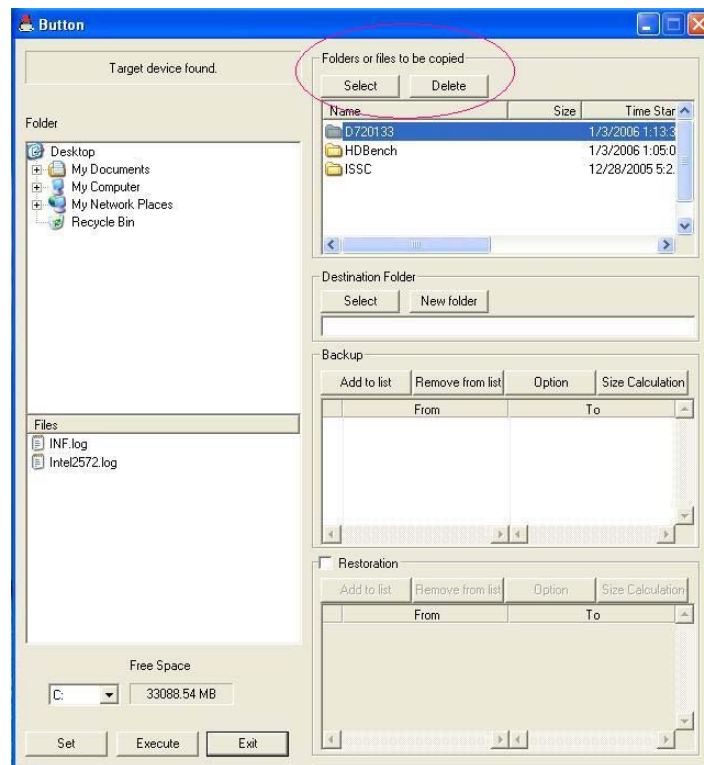


Backup Function

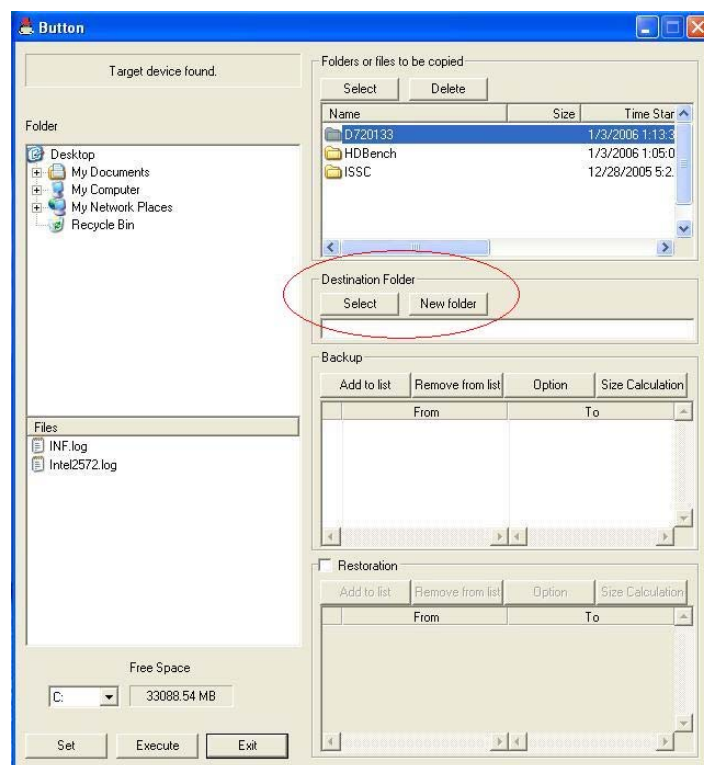
1. At **Folder** window, highlight the folder you want to backup.



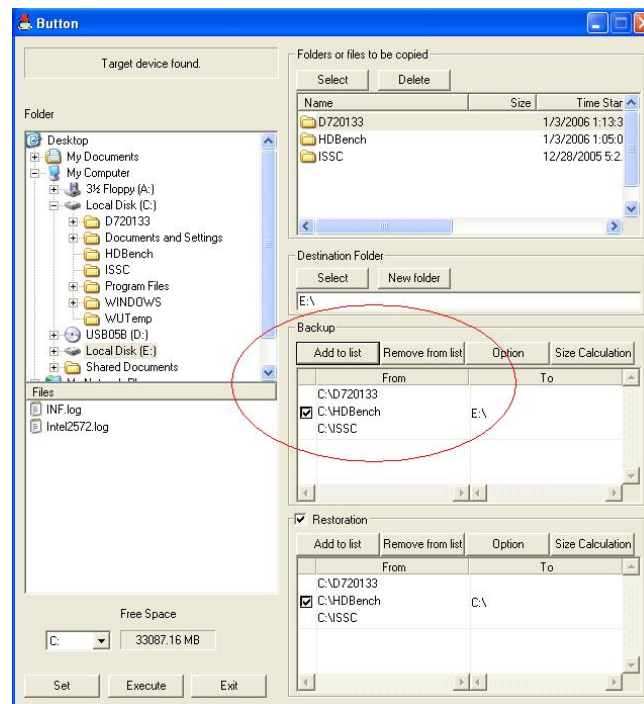
2. At **Folders or files to be copied** window, click **Select** button to select the folder or file. To remove the selected folder or file, click the **Delete** button.



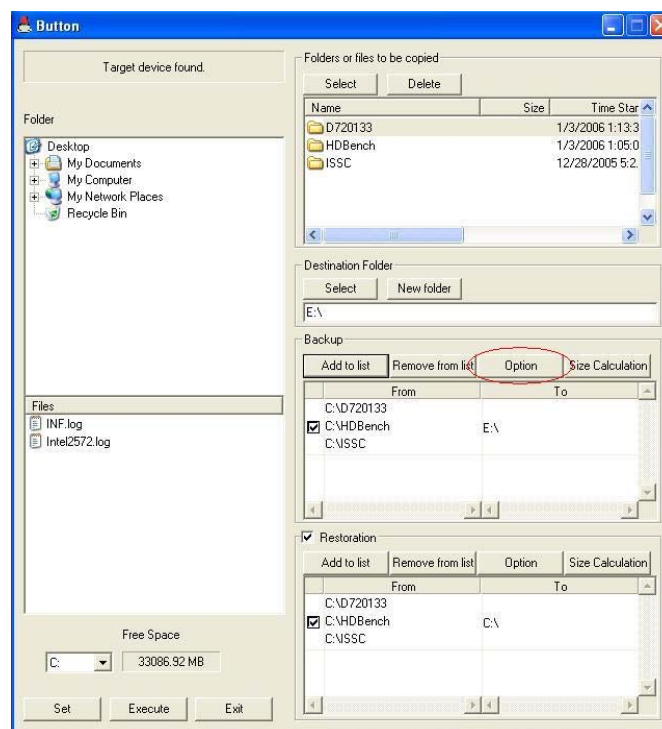
3. At **Destination Folder** window, select the destination folder or click **New Folder** button to create a new folder.



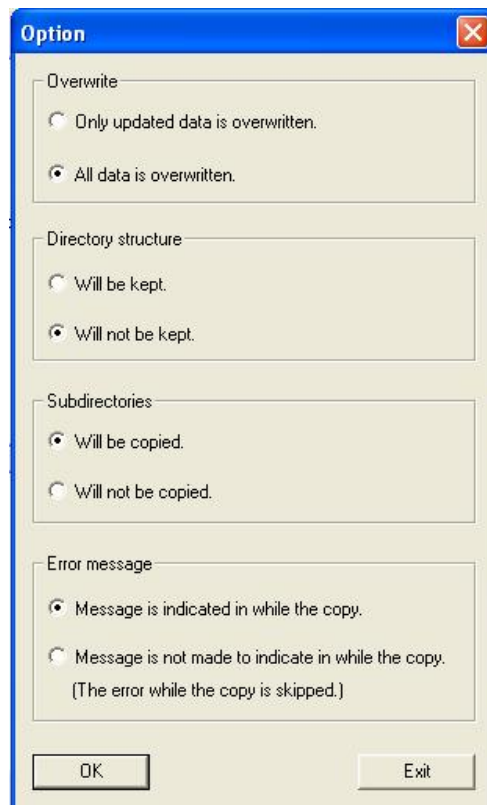
4. At **Backup** window, click **Add to list** button to add the folders or files to the backup list. You can remove the list by clicking on the **Remove from list** button.
5. If there is more than one backup list, you can select which list to backup by ticking the checkbox next it.



6. Click the **Option** button to setup the backup options.

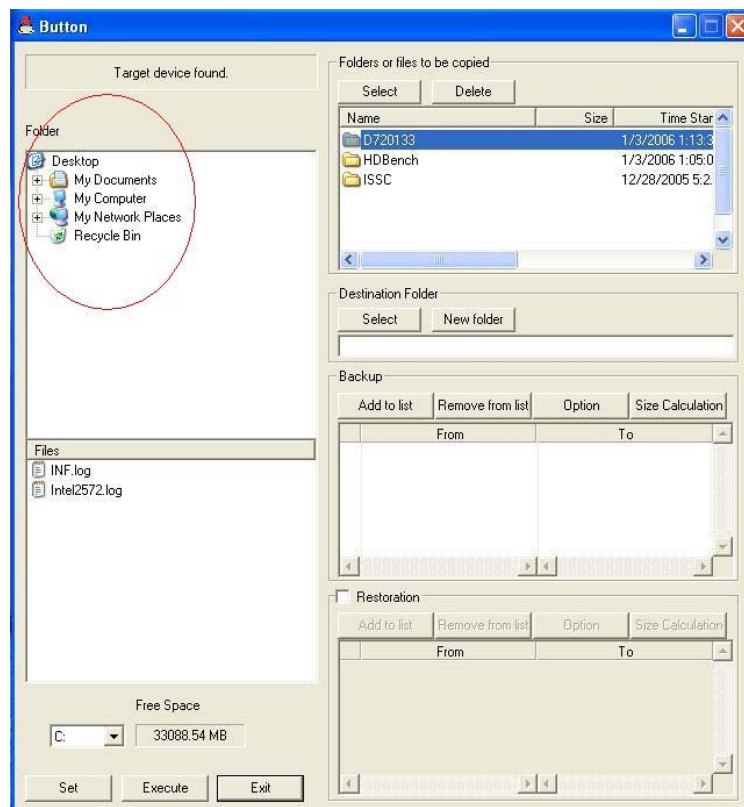


7. Select **OK** button once you have finished changing the option settings.

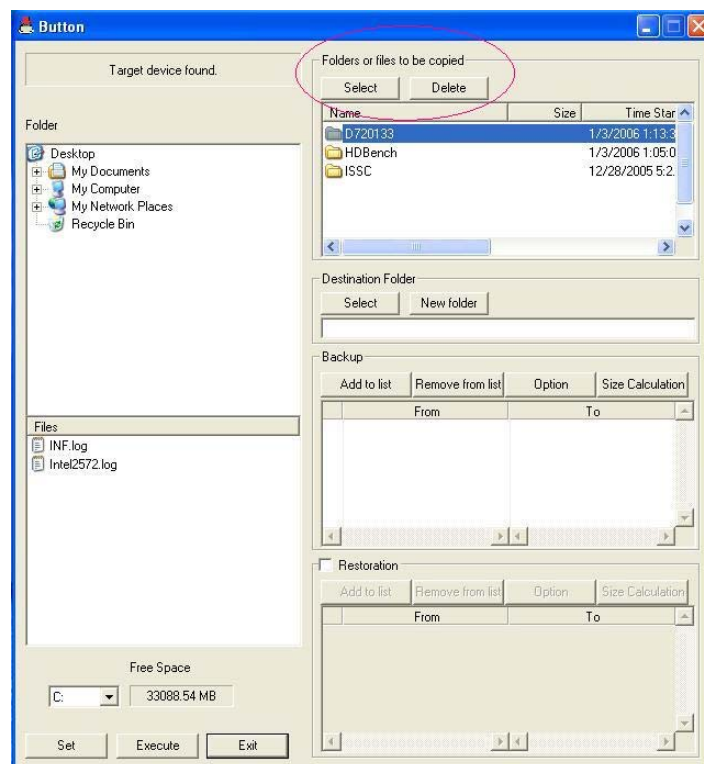


Restoration Function

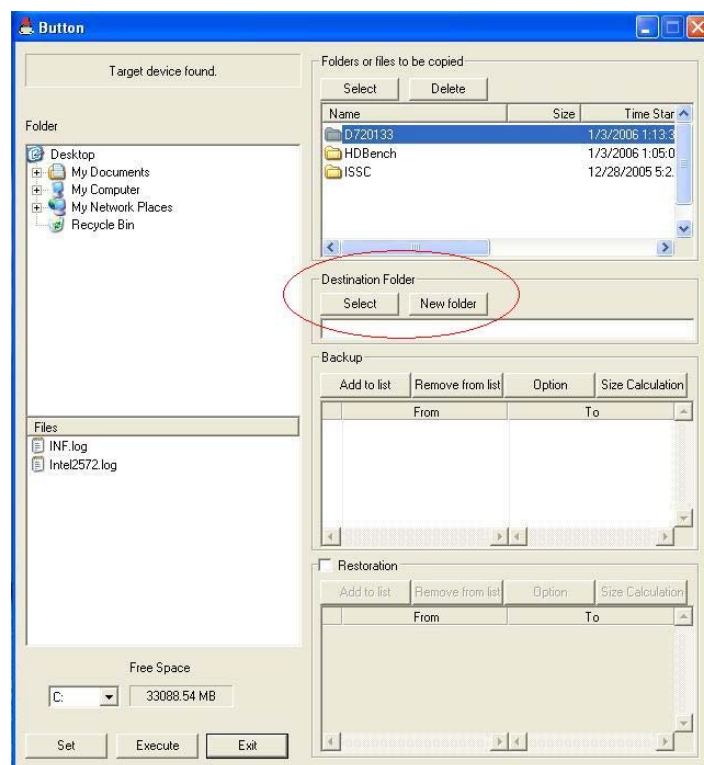
1. At **Folder** window, highlight the folder you want to restore.



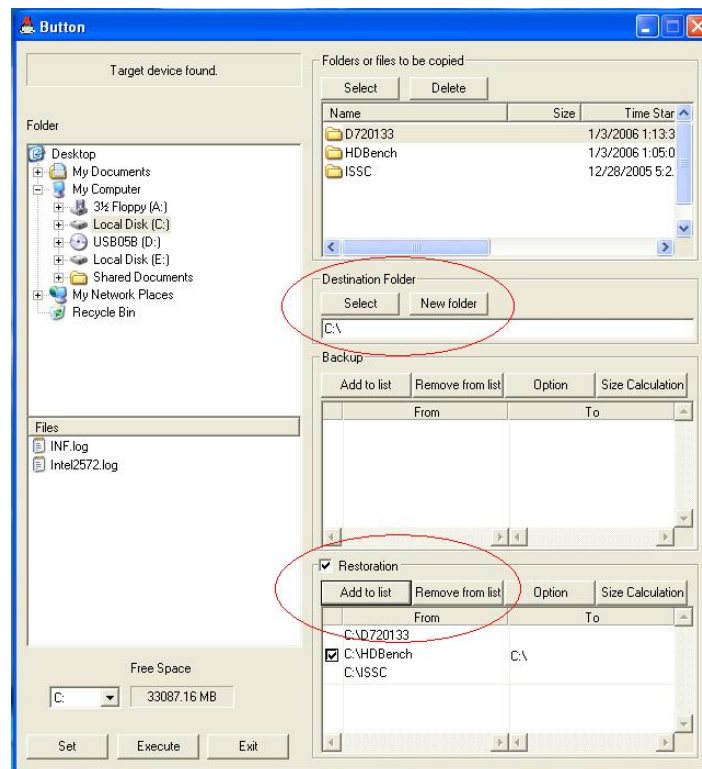
2. At **Folders or files to be copied** window, click **Select** button to select the folder or file. To remove the selected folder or file, click the **Delete** button.



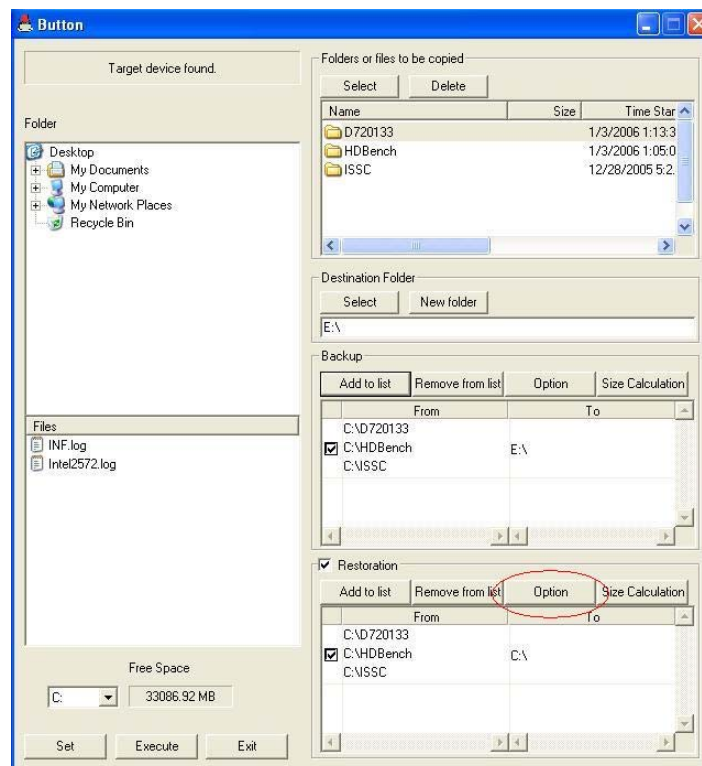
3. At **Destination Folder** window, select the destination folder or click **New Folder** button to create a new folder.



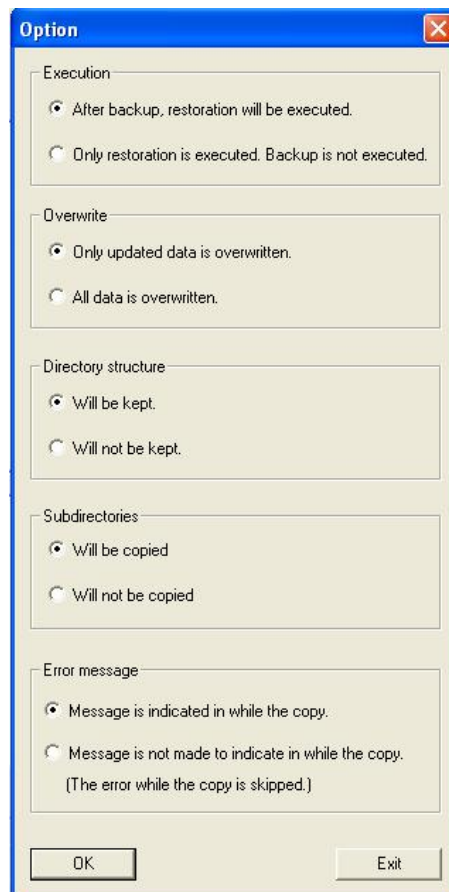
4. At **Restoration** window, tick the **Restoration** checkbox. Click **Add to list** button to add the folders or files to the restore list. You can remove the list by clicking on the **Remove from list** button.
5. If there is more than one restore list, you can select which list to restore by ticking the checkbox next to it.



6. Click the **Option** button to setup the restore options.

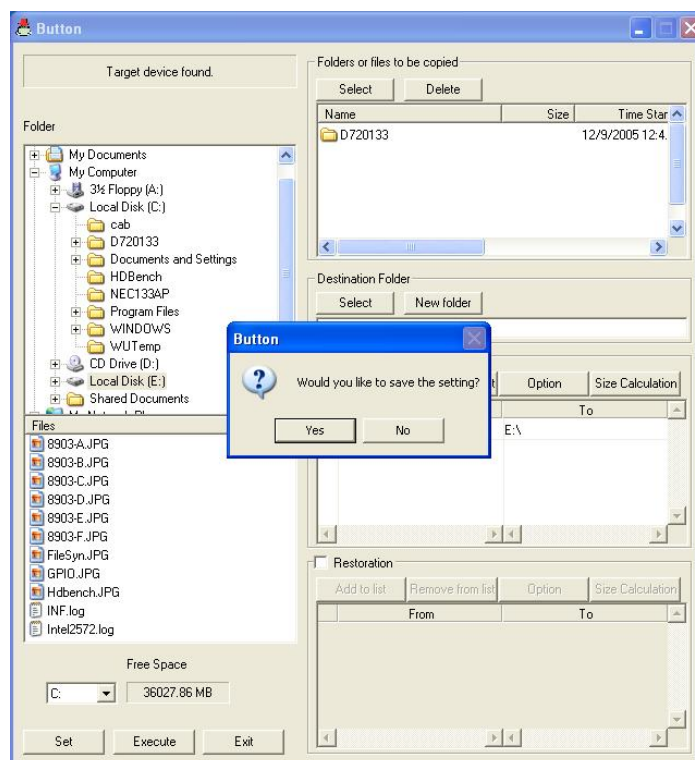


7. Select **OK** button once you have finished changing the option settings.



Save Settings and Execution

1. Press **Set** button and then **Yes** to save the settings.



2. Click the **Execute** button to begin backup or restoration immediately.
3. For push button backup or restoration, you need to exit the Button application first by clicking the **Exit** button.
4. Once you have exit the application, push the button on the enclosure. If all the settings are correct, backup / restoration will commence automatically.

Notes

Please note that there is no warning message for the following issues.

1. Write Protect

When files are copied to the enclosure which has write protection, the Button application will be executed but the write-protected files will not be copied to the enclosure. Please make sure that write protect function on the file is disabled first.

2. Sharing Violation

Make sure to close all the shared files before running the Button application. If files are opened, overwritten operation will not be performed.

3. Overwriting Read-Only / Hidden files

This application does not overwrite Read-Only or Hidden files.

4. Shortage of Disk Space

When disk space is shortage, only files whose size equals to the free space are copied. Before executing this application, please check the size of files to be copied and the free disk space first.

