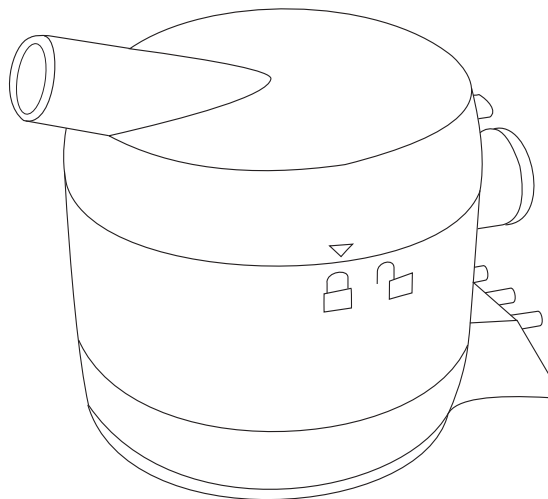


HOFFRICHTER



AquaTREND uni

User's manual

SERIAL NUMBER

HOFFRICHTER GmbH delivers all its systems and devices with a serial number in order to ensure traceability. The serial number is indicated on the type label on the bottom of the system. Please always specify the serial number in inquiries and complaints.

CONFORMITY

The device complies with the requirements of the Directive 93/42/EEC.



Legend of Symbols	4
Safety Instructions	5
Intended Use	8
Technical Description	9
Operation of the Device	11
Cleaning	15
Troubleshooting	18
Technical Data	19

LEGEND OF SYMBOLS



Observe the accompanying documentation



Applied part type BF



Electric safety class II
(with protective insulation)



Observe the User Manual



Manufacturer



CE Declaration of Conformity



Caution! Hot!



Do not dispose of the device with normal domestic waste. For information on the proper disposal of the device, please contact your responsible customer service.

SAFETY INSTRUCTIONS

Please read this manual carefully before using **AquaTREND uni** for the first time.

Keep these User Manual at a safe place for immediate consultation, if necessary.

For the period stipulated by law, **HOFFRICHTER** GmbH warrants that the product is free from any defects provided it is used as intended.

Disposal of the Humidifier

For the proper disposal of the device please contact your specialized dealer.

Disposal of the packaging

Your specialized dealer will take back the packaging, however, you can also separate the packaging according to material and dispose of it in your normal domestic waste.

ATTENTION!

HOFFRICHTER GmbH is not liable for any damage and consequential damage nor for any effects on the safety, reliability and performance of the device, if:

- manipulations, modifications, expansions, adjustments, repairs and maintenance measures are carried out by persons not authorized by **HOFFRICHTER** GmbH to do so.
- use is made of accessories and spare parts which come from other manufacturers and have not been released by **HOFFRICHTER** GmbH for use with the device.
- the therapy air humidifier is used in any way other than those described in the User Manual.

In order to prevent potential hazards, please follow the instructions below:

1. Use the humidifier in combination with a respiration therapy device of the **TREND II** series only and observe all instructions for use given for that device.
2. Use accessories only which have been recommended and offered by your specialized dealer.
3. Do not operate the humidifier if it is damaged or not working properly. If that is the case, please immediately notify your specialized dealer.
4. Place the device on a firm and flat surface, avoid an inclined position of the device during operation. Never transport or tilt the respiration therapy device if the humidifier is attached and filled. This might cause water to enter the therapy device and thus damage it.
5. Do not expose the therapy device to direct sunlight or set it up near heaters or similar if the humidifier is attached and filled.

INTENDED USE

AquaTREND uni is used for humidifying the therapy air flow which is supplied to the patient.

Use the humidifier only together with **TREND II** devices.

The water used for humidifying must not contain any additives such as medication, salt, aroma oil or any other substances.

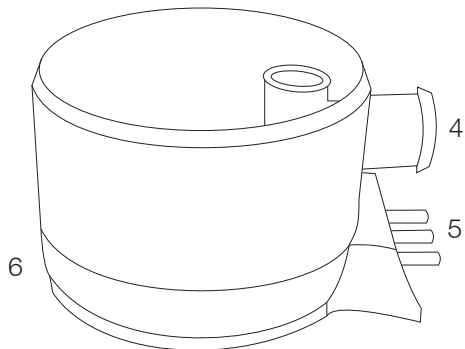
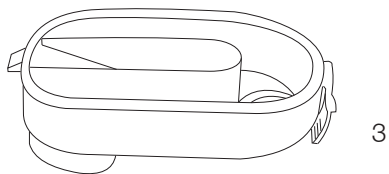
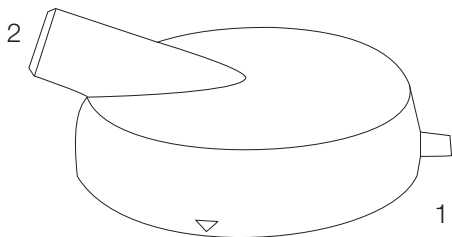
TECHNICAL DESCRIPTION

The device is a warm air humidifier which can be mounted on devices of the respiration therapy line
TREND II.

It is intended to humidify the therapy air flow with moisture to prevent the mucous membranes of the upper respiratory tract from becoming dry.

The heater output can be adjusted in five levels thus allowing the device to be adjusted to the individual patient's requirements.

When turning off the therapy device or taking off the humidifier the device saves the heating level that was set last.



1. Cap
2. Air outlet (connection for therapy tube)
3. Air guide
4. Air inlet
5. Contact pins
6. Reservoir with heating surface

OPERATION OF THE DEVICE

Rinse the humidifier thoroughly with clean fresh water prior to its first use.

Do this as described in the section Cleaning on pages 15 - 17.

When filling the humidifier it must be disconnected from the therapy device.

Open the humidifier by turning the cap in anti-clockwise direction and removing it from the water reservoir (see illustration on page 15).

Fill the humidifier with cold distilled water for medical applications or boiled cold water with a low lime in contact. The water must be cold and contain no additives.

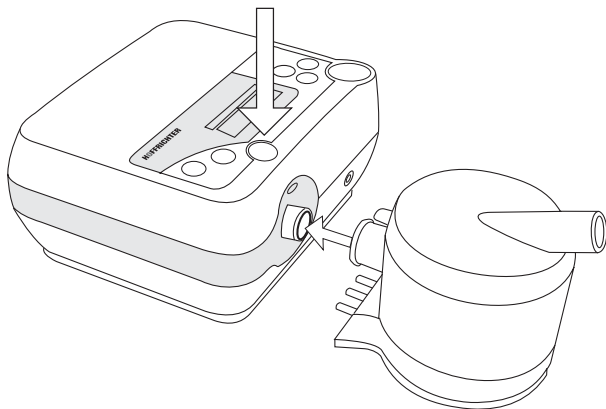
Fill in the water only up to the specified maximum filling level.

Close the water reservoir again by placing the cap onto the water reservoir with slightly pressure and turning it in clockwise direction until it stops.

While carrying the filled humidifier please keep hold of the reservoir.

Never tilt or turn over the humidifier after filling it. When connecting the humidifier with your respiration therapy device please observe the following instructions:

- Place the contact pins and air inlet of the humidifier on the therapy device without twisting or canting them.
- The release button has to snap in place audibly.



The heating power can be set to five levels at the therapy device.

```
Press ON/OFF!  
Heating:2 21:45
```

For starting operation of the humidifier push the heater key on the **TREND II** device. The display now shows the currently set heating level and the heater LED lights.

```
|||||| .....7.5hPa  
Heating:2 21:45
```

After starting the operation of the device with the control key the heating level will be continuously be displayed.

If you interrupt or end the therapy with the control key the heater LED will flash and the humidifier is set to standby.

```
▶Heating.....2  
Exit Menu
```

For changing the heating level press down the heater key for approx. 1 second until the heater menu is displayed. By pressing the key ◀ the heating level can be selected. You can now set the heating level with the help of the key ▲ and ▼ (higher level = higher temperature). Confirm by pressing ◀.

Caution!

Operating the blower when the humidifier is filled but the therapy tube is disconnected may cause water droplets to be swept along in the air flow. Therefore the therapy tube should always be firmly in place before switching on the humidifier.

CLEANING

Please carefully follow the hygiene and cleaning instructions in order to preserve your health and to avoid disturbances and failures.

Except from cleaning it regularly, the device requires no further maintenance.

The regular, daily cleaning prevents the built-up of limescale which is difficult to remove.

Press the release button, separate the humidifier from the therapy device, and take the humidifier to a sink. Open the humidifier by turning the cap anti-clockwise and removing it from the water reservoir (see illustration).

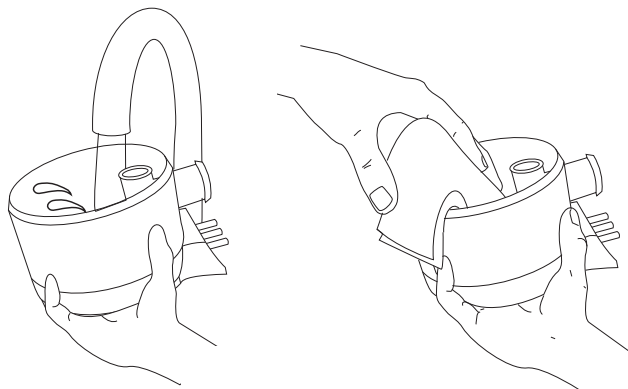


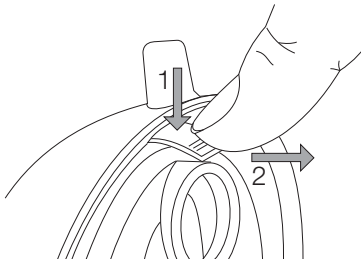
ATTENTION!

Never use sharp or pointed objects for cleaning the humidifier.

Empty the water reservoir and rinse it with running water. Remove any limescale by wiping it with a soft cloth.

If tough limescale has built up we recommend using normal limescale remover or filling the water reservoir with a thin vinegar solution and let it soak for a while. Then empty the reservoir, wipe off any residue limescale with a soft cloth and then rinse the reservoir thoroughly under running water.





Before cleaning the cap remove the air guide as shown. It is sufficient to rinse the device daily with running water.

It is important to let the humidifier dry completely after cleaning it. Do not refill it before it has not dried out completely. You can also clean the water reservoir and the cap in the dishwasher at a temperature of up to 60° C. However, we recommend thoroughly rinsing it with running water to avoid deposition of food leftovers from the dishwasher.

A chemical or heat disinfection of the humidifier by the user is not required and is NOT recommended.

AquaTREND uni is intended for use by only one patient. Before using it for another patient it has to be professionally sanitized. Please take the humidifier to your specialized dealer to have it sanitized.

TROUBLESHOOTING

Problem	Remedy
Water in the therapy tube	<p>The heating has been set too high, select a lower heating level.</p> <p>Run the tube under the blanket.</p>
No or insufficient humidification	Select a higher heating level.
Selected heating level is not displayed	Check if the contact pins have been inserted into the respiration therapy device all the way and if the release button has firmly snapped into place. The respiration therapy device has to be switched on.
Water is escaping from the air outlet	Check if the water reservoir has been filled beyond the maximum filling level.

TECHNICAL DATA

Dimensions (W x D x H)	110 x 150 x 125 mm
Weight without water	approx. 350 g
Operational voltage	24 V / DC
Electrical power	0 ... 20 W
Heating level 1	4 W
Heating level 2	8 W
Heating level 3	12 W
Heating level 4	16 W
Heating level 5	20 W
Relative humidity	

	flow	level 1	level 5
4 hPa	16 l/min	> 75 %	100 %
10 hPa	26 l/min	> 65 %	> 90 %
20 hPa	36 l/min	> 50 %	> 70 %

Values measured at 22 °C and 55 % rel. air humidity

4 hPa : 16 l/min : 13 mg/l

20 hPa : 36 l/min : 10 mg/l

Values measured at 24 °C and 35 % rel. air humidity

NOTE: The humidification ratio can vary at different ambient conditions.

Dispensary of the humidifier
(Heat level 5)

Max. capacity	approx. 300 ml
Max. water temperature	43 °C
Product class according to the MPG	Ila
Classification according to EN 60601-1	Safety classe II, device type BF

Operating temperatur	+ 5 °C ... + 35 °C
Storage temperatur	- 40 °C ... + 70 °C
Air humidity	15 % ... 95 % rel. air humidity
Operating altitude	- 400 m ... 3500 m (1060 hPa ... 700 hPa)

The technical specifications are subject to technical modifications

HOFFRICHTER GmbH

Mettenheimer Str. 12/14

19061 Schwerin

Germany

Phone: +49-385-39925-0

Fax: +49-385-39925-25

www.hoffrichter.de

info@hoffrichter.de