

The Tendercare logo features the word 'Tendercare' in a large, black, serif font. It is flanked by two horizontal, wavy, black lines that resemble stylized grass or a textured border.

Tendercare

A faint, light grey illustration of a metal wheelbase is centered in the background. It shows a four-wheeled frame with a central platform and various mechanical components like axles, bearings, and a folding mechanism.

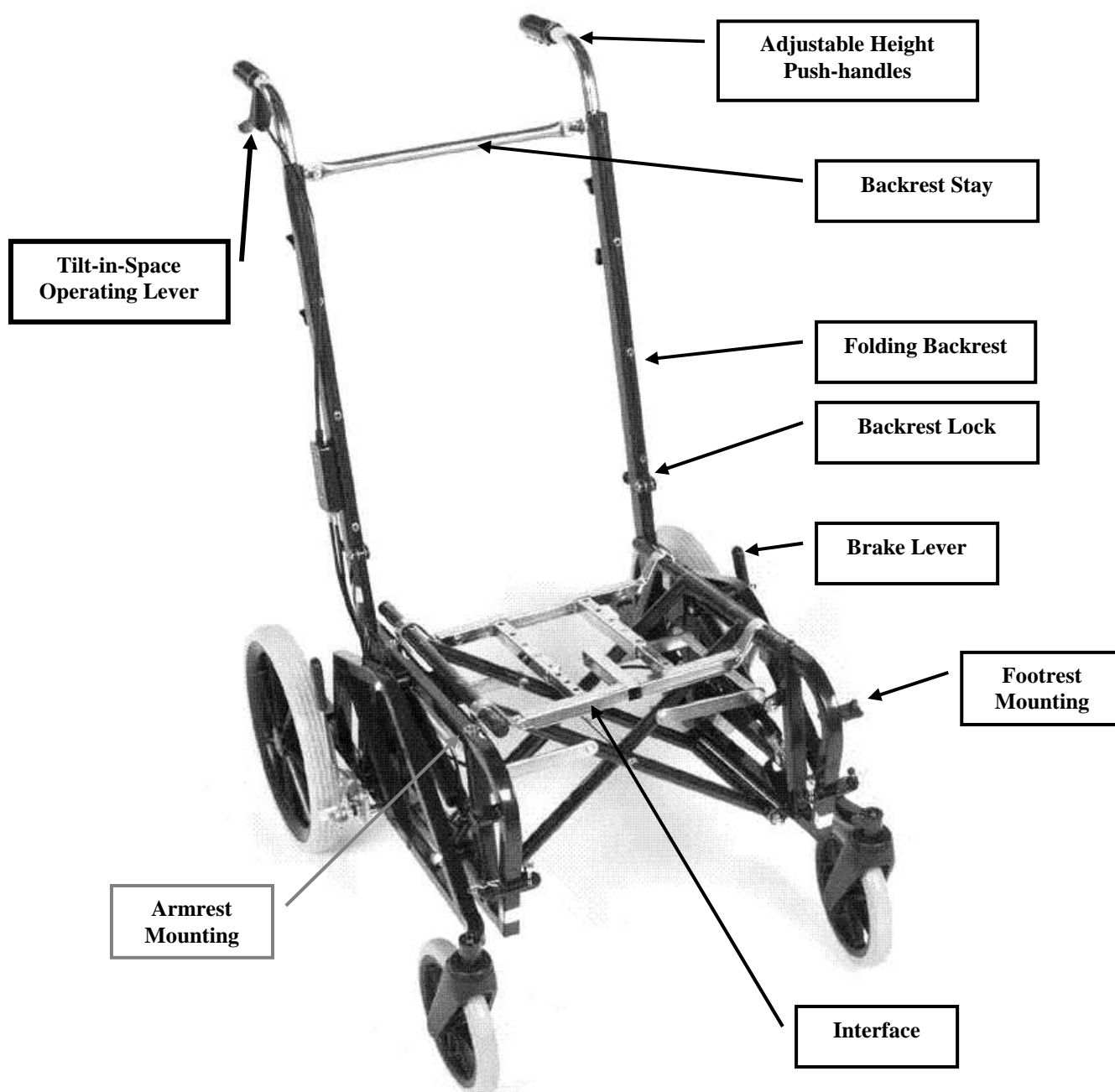
USER MANUAL

For

TILT and FOLD WHEELBASE

IMPORTANT

Please read these instructions carefully
Before using your wheelbase



TENDERCARE

TILT & FOLD WHEELBASE

With

TENDERCARE SEATING INTERFACE

CONTENTS

ITEM	DESCRIPTION	PAGE
1	Who to contact if you have difficulty	4
2	Intended use	4
3	Unpacking	4
4	Preparing for use	5
	4.1 Unfolding and assembling the wheelbase.....	5
	4.2 Fitting and removing footrests.....	6
	4.3 Tilt-in-Space.....	7
	4.4 Tyres and Brakes.....	8
	4.5 Rear Wheel Position.....	8
	4.6 Self-Propelling Wheels.....	9
	4.7 Tipping Wheelbase.....	10
5	Fitting Interface and Special Seat	10
6	Attendant Pushing	11
	6.1 Pushing.....	11
	6.2 Brakes.....	11
	6.2 Comfort.....	12
	6.4 Lifting and general safety.....	12
7	Cleaning	12
8	Maintenance	12
	8.1 Routine maintenance.....	12/13
	8.2 Six monthly maintenance.....	13
9	Oxygen cylinder	13/14
10	Warranty	14
11	Transporting the wheelbase	14/15
12	Repairs	16

1. Who to contact in difficulty

Tendercare Ltd
PO Box 3091, Littlehampton, BN16 2WF
Tel (01903) 726161 Fax (01903) 734083
Email: info@tendercareltd.com
www.tendercareltd.com

2. Intended use

The Wheelbase with Tilt in Space facility is an ideal mobility platform for special seating systems. The wheelbase will accept a wide range of seating interfaces and special seating systems suitable for older children and adults. It is also suitable for carrying special seating systems for all children who require postural management.

It has four wheels; the front wheels are castors to allow easy steering. The frame can be folded for transit and has tilt in space seating. The push handles are adjustable in height to suit a wide range of attendants.

The maximum user weight including any interface, seating system and accessories should not exceed 114.5kg (18 stone).

The following accessories are available for use with the wheelbase: - Armrests, footrests, self-propelling wheels, backrest upholstery, play tray and padded pelvic strap.

3. Unpacking

The wheelbase is delivered in a cardboard carton approximate weight 28 kg and size 800 mm wide x 350 mm deep x 870 mm high.

Warning the transit carton is heavy so moving and unpacking must be done with care. Observe all lifting and handling regulations.

- 1) Stand the Carton upright making sure it is supported and cannot fall over. Open the carton and remove any packages or packing, which could obstruct the removal of the frame.
- 2) Carefully pull out the wheelbase and check that you have the following items: -

Item	Component	Number	Yes	No
1.	Tilt and Fold wheelbase	1		
2.	Push handles	2		
3.	Thumb screws (<i>for push handles</i>)	4		
4.	User Manual	1		
5.	Any Accessories that were ordered with wheelbase	-		

If any items are damaged or missing please contact Tendercare, within 36 hours of delivery.

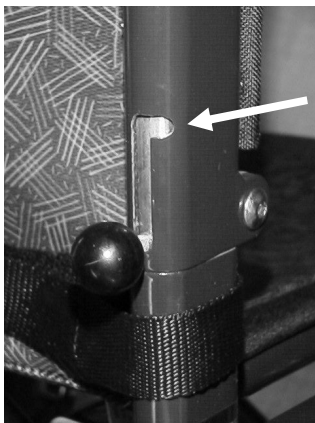
- 3) After unpacking and checking you have all components and that they are in good condition, carefully dispose of the packaging at your local recycling centre.

4. Preparing for use and operation

Warning: - when opening or folding the wheelbase, ensure that you hold the frame so that you avoid any danger of catching your fingers in moving parts.
- keep the child clear of the wheelbase during opening and folding.

4.1 Unfolding and assembling the wheelbase

1) Backrest supports.

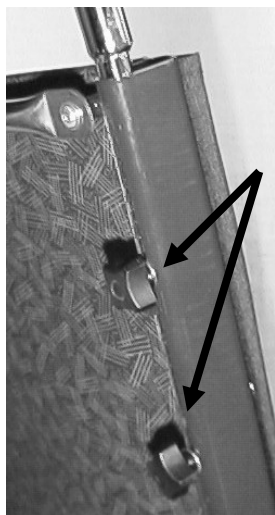


Standing behind the wheelbase lift the two-backrest locking pins using the ball shaped handgrips at the bottom of the backrest tubes. Turn them so that they lock into the groove arrowed opposite.

Lift backrest supports vertical.

Lock the supports in position by moving the handgrips out of the arrowed groove (*see photo*) and make sure they move to the bottom of the slot in the backrest tube.

2) Push handles.



The push handles are fitted to the wheelbase when it is delivered. To adjust the height to suit you, simply unscrew (*turn anti clockwise*) the two thumbscrews at either side and near the top of the backrest. (*See photo opposite*) Lift or lower the push handles to a height that suits you then retighten (*turn clockwise*) the thumbscrews.

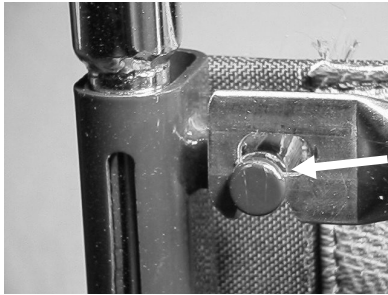
To prevent the push handles moving in use these screws must be tight. You should regularly check that they are tightened properly.

To make it easier for some people to push the wheelbase when the backrest is in its lowest position the push handles can be reversed so that the handgrips are pointing forwards. Simply unscrew the thumbscrews, turn the push handles so they are pointing forwards and refit the thumbscrews.

3) Unfolding the seat.

Standing in front of the wheelbase place palms of hands on each side of the seat frame then press down to open the wheelbase. Take care to hold your fingers towards the centre of the seat frame to avoid catching them on the wheelbase frame.

4) Backrest spreader bar.



Standing behind wheelbase lift the chrome “spreader” bar, which is on the right hand backrest support, upwards and place its slotted end onto the peg on the left hand backrest support (*arrowed*). It may be necessary to push the backrest supports apart when doing this.

5) Armrests (*When supplied as an optional extra*)



- 1) Standing at the side of the wheelbase place each armrest into the holes in the wheelbase frame. (*See photo*). Make sure they are pressed into the wheelbase frame properly.
- 2) Make sure that the tube supporting the armpad extends to the rear of the wheelbase.
- 3) To fold the wheelbase do the reverse of the above.

4.2 Fitting and removing footrests

1) Fitting the footrests (*When supplied as an optional extra*)

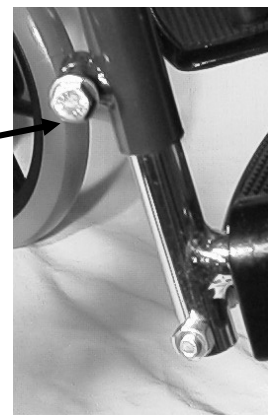


To fit the right hand footrest, stand in front of the wheelbase. Remove the spring clip from the lower hinge pin on the side of the wheelbase. Making sure the footplate is facing in towards the centre of the wheelbase place the footrest onto the hinge pins. (*See Photo opposite*). Replace the spring clip. Swing the footrest towards the centre of the wheelbase until it locks in place.

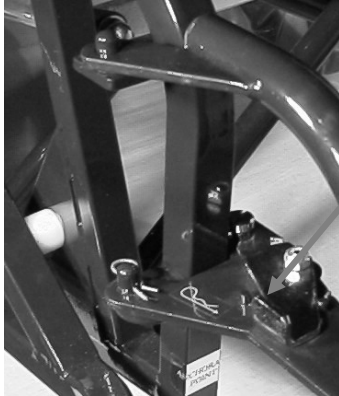
Repeat for the left hand footrest.

Adjust the height of the footrest by loosening the nut on the support tube using a 10 mm spanner. Move the footrest to the desired height then retighten the clamp nut. (*See picture opposite*).

The angle of the footplate can be adjusted by loosening the lock nut, which is at the bottom of the footplate support tube. Screw in or out the footplate stop; until the desired angle is obtained then retighten the lock nut.



2) To fold footrests back against the wheelbase frame.



Lift up the footplate so that it is vertical then push on the silver catch on the footrest. The footrest will then swing back. (*See picture opposite*).

To return the footrest ready for use simply swing the footrest forwards until the catch locks then lower the footplate.

3) To remove footrests.

Remove the spring clip from the lower hinge pin. Swing the footrest to the side and holding the curved part of the support tube lift upwards.

Tip: - *The spring clip prevents the footrests being lost. However, if you need to regularly remove the footrests the spring clip can be discarded.*

4.3 Tilt in Space

The angle of the seat and backrest can be adjusted to any angle between the upright and fully reclined position.

To recline the seat, **put the brakes on** and stand behind the wheelbase. Holding both push handles squeeze the operating lever (*see photo opposite*) and **push down evenly on both handles**. Release the lever when the seat is at the desired angle.

To bring the seat upright put the brakes on and stand behind the wheelbase. Holding both push handles squeeze the operating lever (*see photo opposite*) and lift evenly on both handles. Release the lever when the seat is at the desired angle.



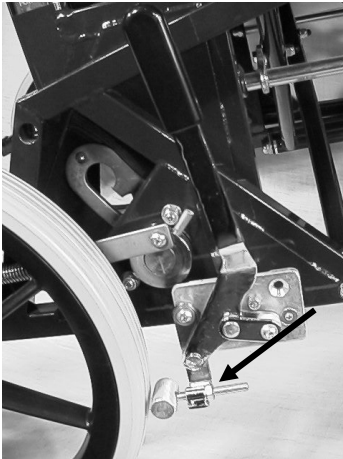
**OPERATING
LEVER**

Important: - Always put the brakes on and move both push handles together when adjusting the seat angle.

4.4 Tyres and Brakes

The tyres are made from a solid material and do not require any attention other than being cleaned with a damp cloth when dirty.

Check brakes by moving both levers forward as far as they will go. The wheels should now be locked. If the wheels move the brakes need adjusting.



Adjust the brakes by loosening the nut (*arrowed*) locking the brake pad in place. Turn the brake pad so that it is near to, but not touching, the tyre. Retighten the locking nut.

Always adjust both brakes at the same time and recheck that the brakes work properly.

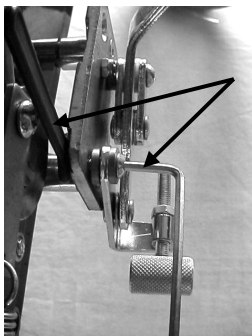
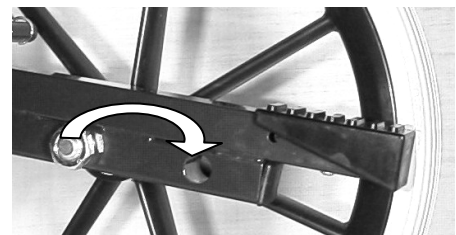
If the wheelchair is fitted with (optional) Hub Brake wheels the standard Occupant brake will also be fitted. Hub brakes are for the attendants use only and not for use as a parking brake. You must ensure that the supplied Occupant parking brakes are used when the chair needs to be parked and you must not rely on any parking brake which may be fitted to the Hub Brakes.

Note: *Don't leave the brakes ON for a long period. If you do a flat section may appear on the tyre. When not using the wheelbase i.e. overnight or during storage make sure the brakes are OFF.*

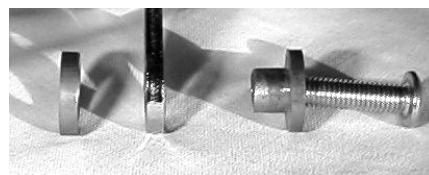
4.5 Rear Wheel Position

The rear wheel is supplied mounted in its forward position to provide optimum ease of manoeuvring and tipping. However, a small number of people may require a greater degree of stability. If this is the case the rear wheel and brake can be moved to its rear mounting. It is recommended that this is only done by a technician or competent DIY person.

Using two 19mm spanners undo the axle mounting nut. Make sure you note the position of the various washers. Move the wheel to the rear hole refit the washers, apply Loctite to the threads refit the nut and tighten. (*See picture opposite*).

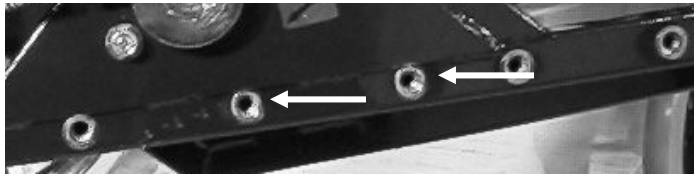


To move the brake assembly use a 3 mm hexagon key and 8 mm spanner to remove the rear brake linkage screw making a note of the position of the spacers. (*See photograph below*).



Using a 4 mm hexagon key remove the two back-plate retaining screws

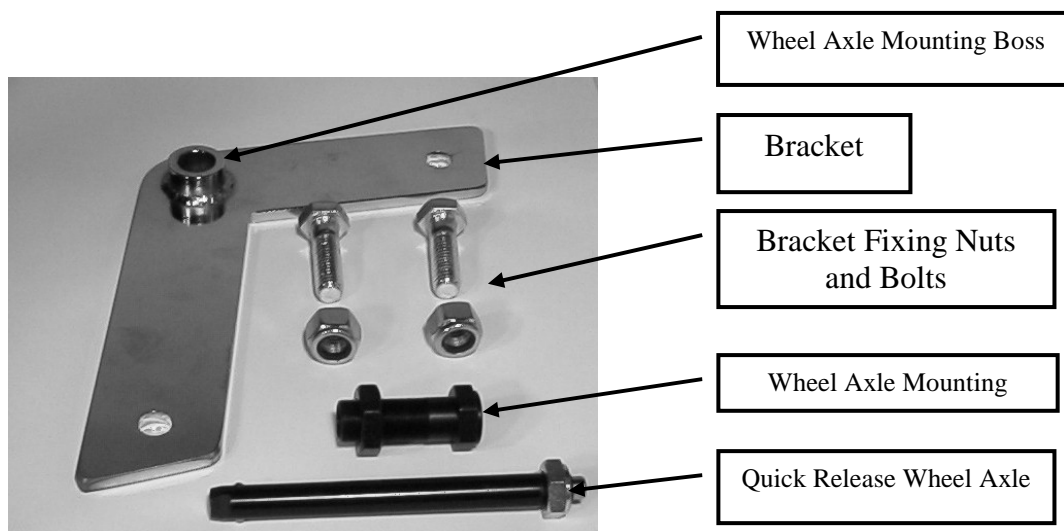
and move the plate back so that its fixing screws fit the into the two rear holes on the wheelbase frame. Refit the screws making sure that the washer and spacer is correctly positioned. (*See Photographs below*).



Adjust the brakes as described in section 4.4 above.

4.6 Self-Propelling Wheels (*When supplied as an optional extra*)

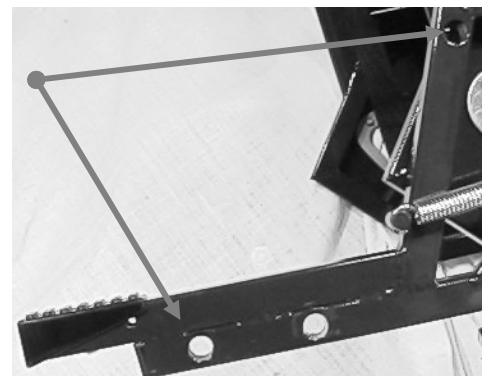
When ordered with the wheelbase the propelling wheels are supplied pre-fitted but they can also be fitted later as an optional extra. It is recommended that only a technician or competent DIY person does this.



Remove the rear wheels and brakes as described in section 4.5 above.

Fit the bracket to the wheelbase using the holes shown on the photograph opposite. The bracket must be fitted with the shorter side at the top and the longer side in the vertical position. The wheel axle-mounting boss must be facing in towards the centre of the wheelbase.

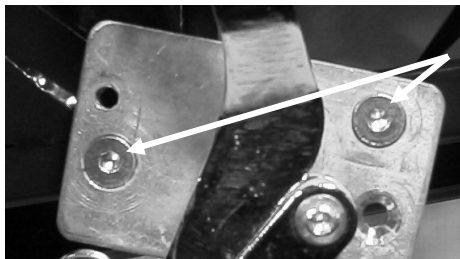
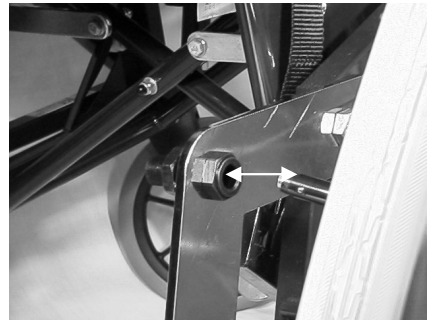
Attach the bracket to the wheelbase by inserting the bolts from the outside of the wheelbase. Apply Loctite to the bolt threads, fit the nuts and tighten using 19 mm spanners.



Insert the wheel axle mounting from the outside of the bracket, apply Loctite to the thread then fit and tighten the nut using a 22 mm spanner on the outside and 24 mm spanner on the inside.

Press the button on the end of the quick release wheel axle and insert it into the centre of the wheel then into the wheel axle mounting on the wheelbase.

To remove the wheel press the button on the end of the quick release wheel axle and pull the wheel from the wheelbase.

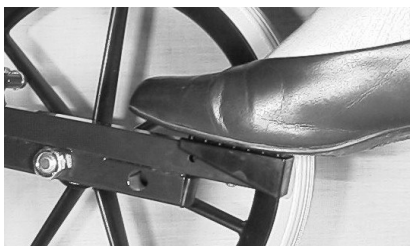


Refit the brakes using the holes in the brake mounting plate shown in the photograph opposite. Attach the brake assembly to the wheelbase using the two front holes in the wheelbase frame. (*See below*).



Reassemble, adjust and test the brakes as described in sections 4.4 and 4.5 above.

4.7 Tipping the Wheelbase



To tip the wheelbase backwards when climbing kerbs stand behind the wheelbase holding onto both push handles. Place one foot, either the right or left, whichever suits you, onto the tipping lever as shown in the picture opposite. Press down with your foot and pull back with your arms. The front of the chair will lift.

IMPORTANT: - Take great care when doing this to avoid the combined weight of the wheelbase, seating system and occupant overcoming your strength and tipping back onto you. Never try to tip the wheelbase if the occupant is much heavier than you are.

5. Fitting the Interface

Due to the wide range of interfaces and seating systems that can be used with the wheelbase it is not possible to list the instructions here. Please refer to the user manual supplied with the interface and seating system.

6. Attendant Pushing

6.1 Pushing

- 1) The wheelbase is easy to push over hard, even surfaces but may be more difficult over rough; uneven surfaces and the wheels may sink into soft ground. **Never force the wheelbase if it becomes stuck**, this may cause the rear wheels to lift and the wheelbase may tip forwards. If the wheelbase gets jammed on a stone or cracked pavement, tip the wheelbase backwards using the tipping levers to raise the castors over the obstacle and then proceed. On soft ground it may be easier to pull the wheelbase backwards.
- 2) Whenever possible avoid steep and uneven surfaces because there is a danger that the wheelbase may tip over. If you cannot avoid difficult surfaces you must take extra care when travelling across them.
- 3) Do not use the wheelbase in sandy conditions.
- 4) Always use two hands for pushing the wheelbase.
- 5) The wheelbase is steered by the front castors. Most pavements slope slightly towards the kerb and the wheelbase will have a tendency to curve in the downward direction towards the road. Two hands will be needed to prevent this.
- 6) For the comfort of the occupant always avoid pushing too fast or making sudden fast turns, jerking, jolting or bumping. Many occupants are liable to be affected by rough handling, which can cause loss of confidence, discomfort or pain.
- 7) Avoid kerbs. Wherever possible use ramped kerbs or slopes. This will make pushing the wheelbase easier and safer and will be more comfortable for the occupant.
- 8) Avoid steep kerbs and flights of steps because of the danger of losing your grip on the wheelbase or of the occupant being tipped out. Always use a ramp or lift if available.
- 9) Always look well ahead so that you have plenty of time to avoid hazards.
- 10) Be considerate to other people and watch out for pedestrians who may stop or suddenly change direction.

6.2 Brakes

- 1) Always put the brakes on when getting into or out of the wheelbase and when leaving the occupied wheelbase unattended.
- 2) To avoid making flat sections on the tyres never store the wheelbase with the brakes on for long periods i.e. overnight or during storage.
- 3) If the wheelchair is fitted with (optional) Hub Brake wheels the standard Occupant brake will also be fitted. Hub brakes are for the attendants use only and not for use as a parking brake. You must ensure that the supplied Occupant parking brakes are used when the chair needs to be parked and you must not rely on any parking brake which may be fitted to the Hub Brakes.

6.3 Comfort

- 1) Always be considerate to the occupant
- 2) Before setting out on a journey make sure the occupant is comfortably and correctly seated and that any safety straps of harnesses are correctly adjusted and used. Always ensure that both feet are on the footrests and that clothing is tucked in and cannot catch on the wheels.
- 3) Remember the occupant is in front of you. They will want to be part of your conversations and interests. Also their view will be different to yours when it comes to looking into shop windows, etc. it can be extremely frustrating to hear an exciting bargain being discussed when it is situated out of sight behind the occupant's head.

6.4 Lifting and general safety

- 1) The wheelbase is designed to be used by one person only. Never allow children to play on the wheelbase or stand on the footrests or tipping levers. Never hang anything such as bags on the push handles. If you do, there is a danger of the wheelbase tipping backwards.
- 2) Never try to lift the wheelbase when the user is sitting in it.
- 3) For your own safety and good practice never lift the empty wheelbase until it has been properly folded and the footrests have been removed. Always use good lifting practice.
- 4) Never leave the child/occupant unattended, even with the harness fitted.
- 5) Keep children clear of the wheelbase during opening and folding.

7. Cleaning

- 1) Whenever the wheelbase gets dirty it should be cleaned using a damp cloth and then dried thoroughly.
- 2) For more stubborn stains wipe with a damp cloth using a mild solution of warm water and soap.
- 3) Never use furniture polish or spirit to clean the frame.
- 4) The Fabric parts of the Wheelchair are made from Ambla fabric. Ambla is resistant to most mild acids, alkalis, drinks and household stains. Clean with a damp soapy cloth and rinse well with clean water. A soft brush can be used for heavy soiling. Do not use solvents, bleaches, abrasives, synthetic detergents, wax polishes or aerosol sprays.

8. Maintenance

8.1 Routine maintenance

The user or their family can easily carry out the following tasks. No tools are required.

- 1) Always wipe the wheelbase dry. Never put it away damp.
- 2) Check all four-push-handle retaining knobs are in place and are hand tight (daily).

- 3) Check brake operation (weekly).
- 4) Check operation of Tilt in Space mechanism (weekly).
- 5) Clean frame when necessary (we suggest at least once a week).

8.2 Six monthly maintenance

Only someone who is a competent tradesman or repairer should carry out this work. If a major fault is found stop using the wheelbase until it has been corrected.

- 1) Fold and open the wheelbase. Check that all movements through the folding range are free. Examine frame for any damage.
- 2) Examine nuts, bolts, pivots, sliders and frame plugs for tightness and general condition.
- 3) Examine push handle retaining knobs and check they are hand tight.
- 4) Examine brake assemblies for wear, damage and adjustment.
- 5) Examine Tilt in Space mechanism and check operation of reclining mechanism.
- 6) Examine front castors for free rotation of castor assembly and wheel. Check rear wheels for free rotation.

For all other repairs refer to your issuing authority or Tendercare Ltd.

9. Oxygen Cylinder

If a portable oxygen cylinder is required, the maximum size recommended by Tendercare for use with the wheelbase is type PD 455 mm long x 100 mm diameter weight approximately 10 kg. For cylinder and safety information contact:-

BOC Gases, Customer Service Centre, Priestley Road, Worsley, Manchester M28 2UT.
Telephone 0800 111 333.

Warnings:-

If using medical oxygen cylinders ensure compliance with applicable regulations.

When mounting an oxygen cylinder onto the wheelbase care must be taken to ensure the wheelbase will not be damaged in any way. In addition the stability of the wheelbase must not be adversely affected. If necessary, stability tests should be carried out on the loaded wheelbase.

If an oxygen cylinder is required it must be mounted in an approved oxygen tray, be adequately supported, preferably in a cradle, and restrained considering the intended wheelbase use and environment. Valve, gauges and fittings must be adequately protected from mechanical damage.

When using an oxygen cylinder, users and carers should be aware of the potential hazard caused by smoking, naked flames or other exposed heat sources, oil or grease.

Because the fitting and use of oxygen are outside our control Tendercare Ltd does not accept any liability relating to the use of oxygen with the wheelbase.

10. Warranty

- 1) Tendercare undertakes to repair or replace free of charge, any parts or part found to be defective due to manufacture within a period of 12 months from the date of delivery.
- 2) Tendercare Limited will not repair or replace free of charge any part or parts found to be defective due to abuse, misuse or lack of correct maintenance.
- 3) Equipment for warranty claims should be returned in a strong carton. There may be a charge for collection. Contact customer service department on 01903 726161.

11. Transporting the Wheelbase

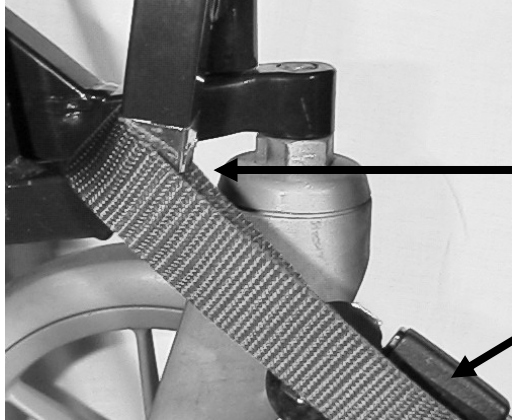
The Tilt and Fold wheelbase can be transported in the luggage boot of a motorcar.

The Tilt and Fold wheelbase has been successfully impact tested against International Standard ISO7171-19 and may be used as a vehicle seat.

When used as a vehicle seat the following instructions must be followed.

- The front of the wheelbase must be facing towards the front of the vehicle. (*In the direction of travel*).
- The seat must be in the most upright position. (*Not reclined*).
- Both Brakes must be in the ON position.
- The special seat and interface must be attached to the wheelbase. Always follow the guidance provided by the supplier of the interface and special seat.
- Follow the advice given in MEDICAL DEVICES AGENCY REPORT MDD/92/07 Guidelines for Transporting Children in Special Seating. ISBN 85197 7082. This is available from the Medical Devices Agency, Hannibal House, Elephant and Castle, London SE1 6TQ
- If transporting medical oxygen cylinders, remove the cylinder from the wheelbase and separately secure it to the vehicle. Ensure compliance with applicable standards regarding transport of Oxygen.
- **The wheelbase has only been tested with the Karabiner 4-Point Webbing Restraint System. DO NOT use any other type of restraint.**
- **Only a trained person should attach the restraints.** The front restraints should be attached first then the rear restraints attached and tensioned.
- The restraint location points are marked on the wheelbase with silver labels as shown below.

Front Restraint Location Point



Restraint attached to inner front frame as Shown.

The restraints should be attached so that the quick release buckle is towards the outside of the wheelbase to allow for quick release in an emergency.

Rear Restraint Location Point

Hook Karabiner around the backrest tube just above the joint of the backrest with the upper side frame. (See picture opposite).

Important: - In addition to securing the wheelbase the occupant and seating system must always be restrained by an approved vehicle belt providing lap and over the shoulder protection. We recommend the Unwin Safety Systems Double Inertia Reel Harness be used.



Alternatively the user may be transferred to an approved vehicle seat and the wheelbase folded and placed safely in the luggage area of the vehicle.

ANY ITEM INVOLVED IN AN ACCIDENT NO MATTER HOW MINOR, MUST BE WITHDRAWN FROM SERVICE IMMEDIATELY AND REPLACED.

12. Repairs

- 1) Repairs: For all repairs contact your issuing authority.
- 2) Major repairs: For all major repairs e.g. bent or damaged frame, the equipment should be returned to the factory. Contact Tendercare Ltd customer services on 01903 726161.
- 3) An approved agent may carry out the following repairs and replacements. Brake adjustment, replacement of front castors; rear wheels, armpads, gas struts and interconnecting cables. A workshop manual is available to repairers.

Important Points

- 1) **Do not reuse Nyloc nuts. Always replace with a new Nyloc nut.**
- 2) **Always use Loctite thread locking compound Grade 241.**
- 3) **Always use recommended components and parts available from Tendercare Ltd.**
- 4) **Do not modify or repair the frame**