

# Digital Poster

*User's Manual*



V Series



## Contents

<b>Chapter One</b>	<b>Overview</b>	<b>-----3</b>
1.1	Introduction	-----3
1.2	Packing List	-----3
1.3	Function	-----3
<b>Chapter Two</b>	<b>Remote, Menu Introduction</b>	<b>-----4</b>
2.1	Remote	-----4
2.2	Menu Introduction	-----5
2.3	Introduction to Copying and Deleting files	-----11
<b>Chapter Three</b>	<b>Instruction to XML</b>	<b>-----12</b>
<b>Chapter Four</b>	<b>Installation</b>	<b>-----17</b>
4.1	Installation	-----17
4.2	Paste Wall - Mount on wall	-----17
4.3	Hole Drilling	-----18

## Chapter One Overview

### 1.1 Introduction :

This display can play JPG,MP3 files.

For convenience of customer, most of operation can be done through remote control.

#### **To new users :**

Before turning on the Digital Poster, Please make sure to plug-in the power cable and insert CF card correctly.

The display will play picture automatically when the power is on. If there is no card in, the display will show the main menu or the switch on picture.

#### **Advice from factory :**

1. Do not change any parameters when it is not necessary.
2. Memory standard inside Digital Poster, generally do not need to come up with.
3. Build a new folder named Loop in U disk, and copy all files into Loop before playing.
4. Keep far from the water when installing or using the product.

### 1.2 Packing list:

1. Digital Poster host x 1
2. Power cable x 1
3. CD x 1
4. Remote Controller x 1
5. Key x 1
6. Wall Mount x 1

If any damage and shortage of accessories is found, please contact dealers or manufacturer in time.

### 1.3 Introduction to products function

- 1、 Display pictures and sound files in the effect set by play lists.
- 2、 Display pictures according to dates set by different play lists.
- 3、 Turn on/off the display automatically according to settings of the timer (Set through the menu).
- 4、 Copy advertisement programs automatically from a USB disk while the display is on.
- 5、 Check the display status through the menu, and preview programs.
- 6、 Display modes:
  - A、 Display pictures in full screen
  - B、 Display pictures, date and time in the same screen
- 7、 Delete overdue advertisement intellectually.

## Chapter Two

## Remote and Menu setting

### 2.1 Settings of Remote Control

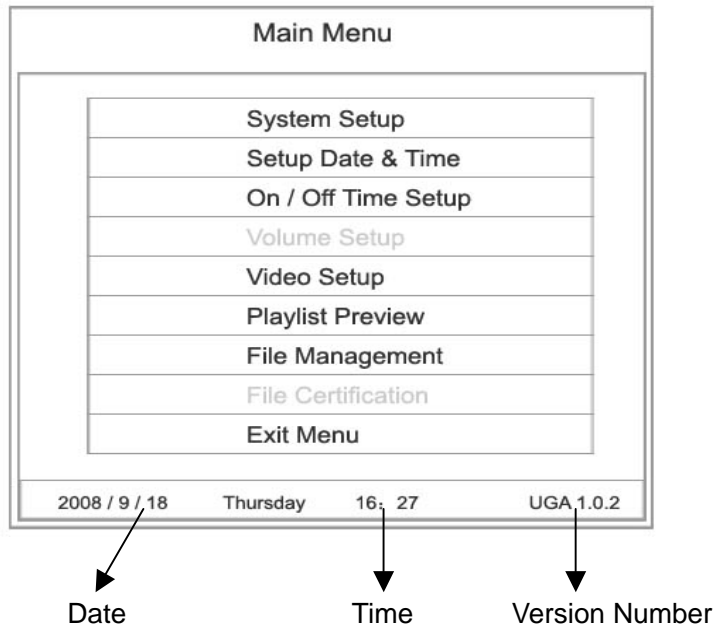


#### Remote instruction

Button	Description
POWER	Power on or off
⏮	previous program
⏭	Next program
+ (volume)	Raise volume
- (volume)	Lower volume
PLAY/PAUSE	Play/Pause, Confirm selection
↑	Up, navigation button
→	Left, navigation button
↓	Down, navigation button
←	Right, navigation button
STOP	Stop the selected file
SETUP	Menu setting

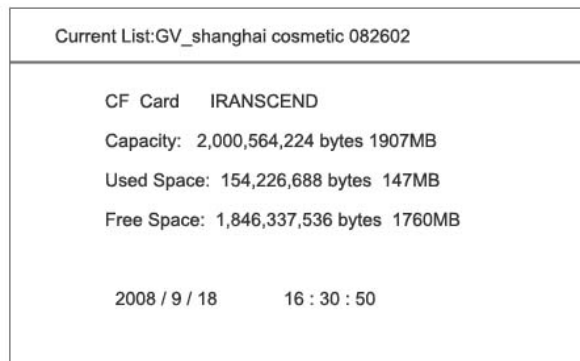
## 2.2 Introduction to Menu

Under Main Menu, Digital Poster has 7 submenus: System Setup, Setup Date & Time, On/Off Time Setup, Video Setup, Playlist Preview, File Management and Exit Menu.. The Main Menu is followed by Date, Time and Version Number of the program. (See Pic.1)



Pic.1

Capacity of CF card, date, time and version number of the program will be shown on the display when it has just been turning on and when the displaying stops. (See Pic.2)



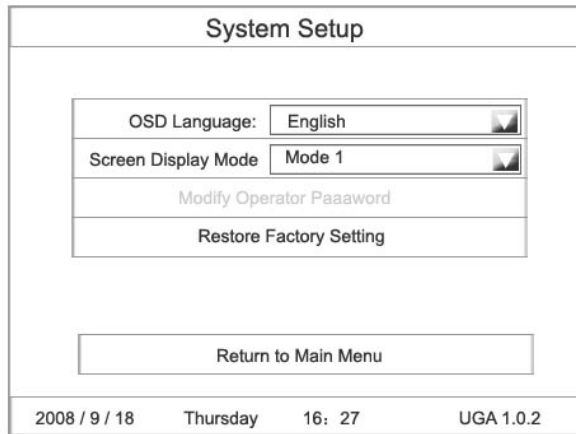
Pic.2

**Menu:**

**A、 System Setup**

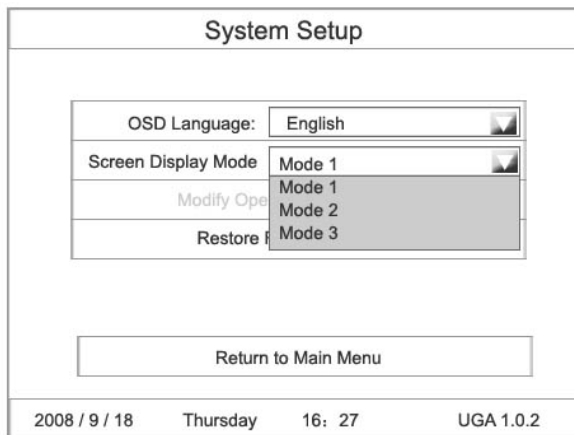
Press **Setup** button to set the main menu. In the main menu, press navigation buttons to select **System Setup**, and press **Play** button to enter submenu **System Setup**. There are 4 submenus: **OSD Language**, **Screen Display Mode**, **Restore Factory Setting** and **Return to Main Menu**.

**a) OSD Language**



Pic.3

**b) Screen Display Mode:**



Pic.4

Note: Mode 1.Display in full screen

Mode 2.Display pictures or video, date and time in the same screen

**Note: Stop displaying before changing settings of Screen Display Modes**

### 3. Restore Factory Setting:

Default Setting:

Default Volume:	25		
OSD Language:	English		
Screen Display Mode:	Mode 1		
On/Off Time Setup:	Keep On		
Display Setting:	Brightness 50	Contrast Ratio 50	Saturation 50

Note: Stop displaying before restoring to factory settings. Above mentioned settings will be changed when the machine restores to factory setting.

### B. Setup Date & Time

See Pic. 5

Use Left and Right buttons to select Year, Month, Day, Hour or Minute and press Up and Down to change values. Select Update Date/Time and press Play to save the changes.



Pic.5

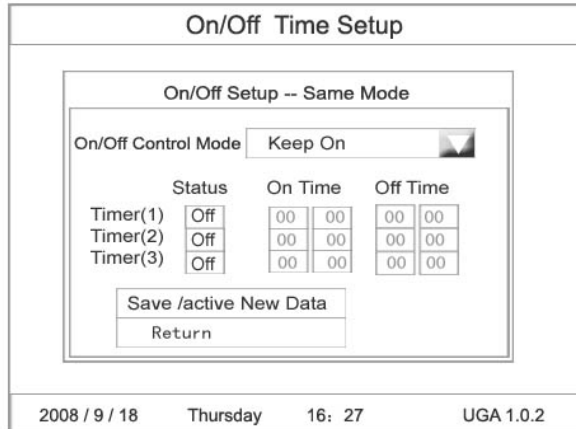
**C. On/Off Time Setup:**

Three Settings: **Keep On, Keep Off and Time On/Off**

**Keep On:** The Poster will be on while the power is on.

**Keep Off:** The Poster will be off while the power is on. If time setting is **Keep Off**, the display will turn off automatically 5 seconds after the setting and will keep off.

**Time On/Off:** There are three groups of settings in this function.



Pic.6

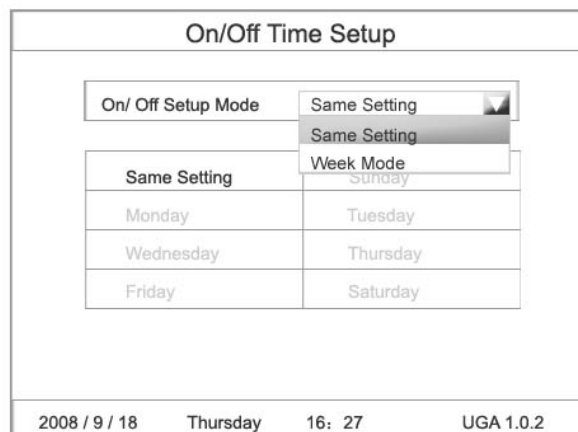
**Same Setting** Make the same set from Monday to Sunday.

For example: On at 8:00, Off at 22: 00

**Week Mode** Make different sets for 7 days in a week. This is developed according to the requirement that some buildings won't be open on weekends and some overnights settings.

**Same Setting:**

Use Up and Down buttons to select Same Setting and press Play to enter the page of Same Settings. See Pic.7

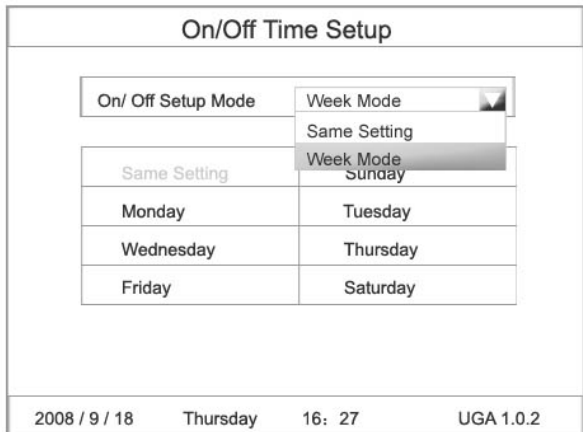


Pic.7



**Week Mode:**

Press Setup to enter this page and use Up and Down buttons to select On/Off Control Mode, then select Week Mode. See Pic.8.



Pic.8

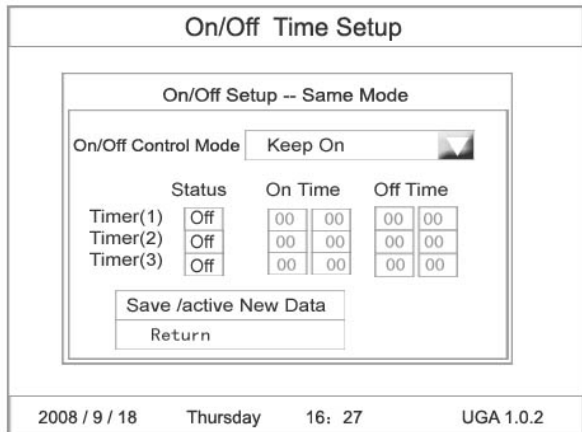


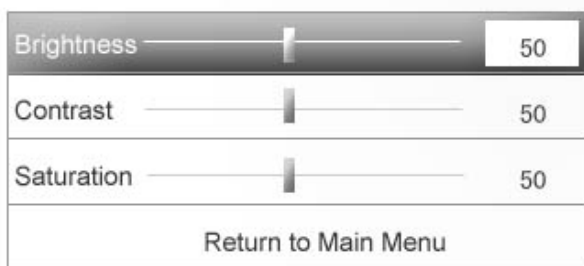
图-9

Note: Factory default setting is Keep On.

**D、 Volume Setting** (This function is not activated yet.)

**E、 Display Setting**

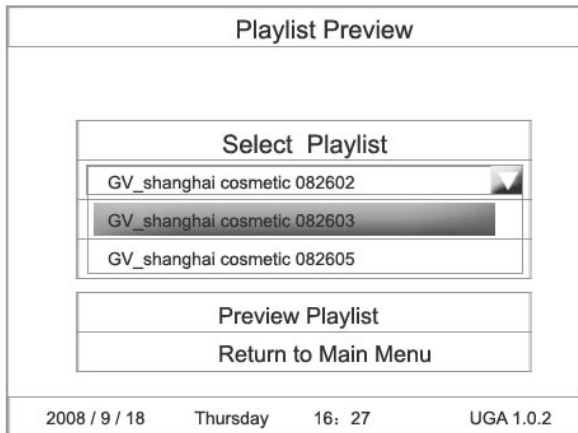
Brightness, contrast and saturation can be set in Display Setting. See Pic.10



Pic.10

### F. Playlist Preview

By this function, users could check playlists in storage. The present advertisement will be displayed as set in the present playlist after 2 advertisements are previewed.



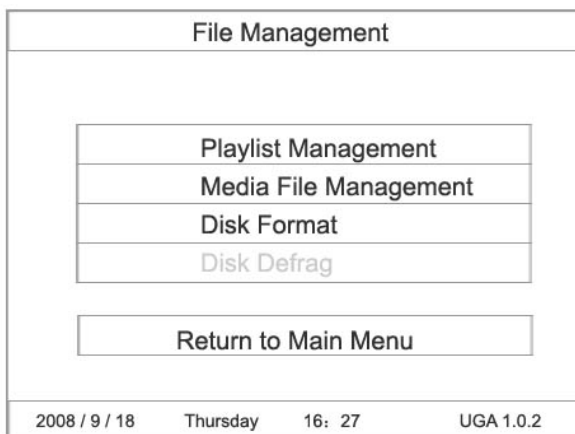
Pic.11



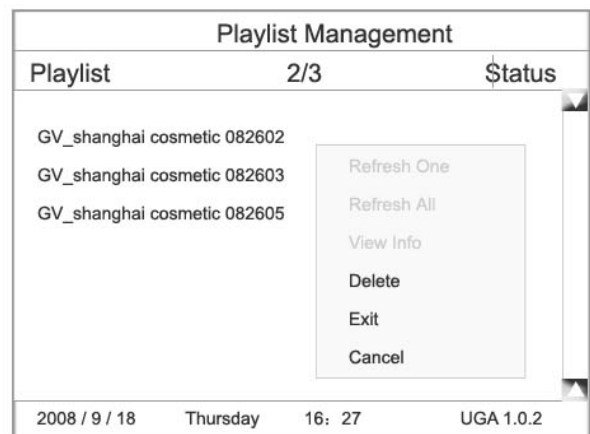
Pic.12

### G. File Management

Press **Setup** to enter Main Page and use Up and Down buttons to select File Management. And press Play to enter the page of File Management which has three submenus: Playlist Management, Media File Management and Disk Format.



Pic.13



Pic.14

2、 **Media File Management:** Delete useless media files.



Pic.15

Note: Manage media files after stop displaying.

### 2.3 Introduction to Copying and Deleting files

Advertisement programs are copied to display through USB disk.

There are five default folders in CF card in the display:

GV\_MEDIA; GV\_SYSTEM ; GV\_DEFAULT; GV\_GRAPHIC\_D and GV\_GRAPHIC\_M.

Steps:

1. Copy advertisement files into USB disk.
2. Input the USB disk to USB port of DIGITAL POSTER.

Copy note will appear on the screen.

(The programs on display will be stopped and the display will return to the starting image. )

- 1) The copy speed and name of new program will be shown during the process.
- 2) When the copying is finished, a finish note will appear on the screen showing number of effect files . Pull out the USB disk.
- 3) If files' names in USB card are not correct, an error note will appear--- No effect files found, remove it, please.

#### Introduction to automatic deleting:

Digital Poster will delete files automatically when it is turning on.

Note: Automatic deleting rules:

Four playlist will be saved in CF card:

the present list, one list before the present one and two list after the present one.

## Chapter Three Playlist Edit

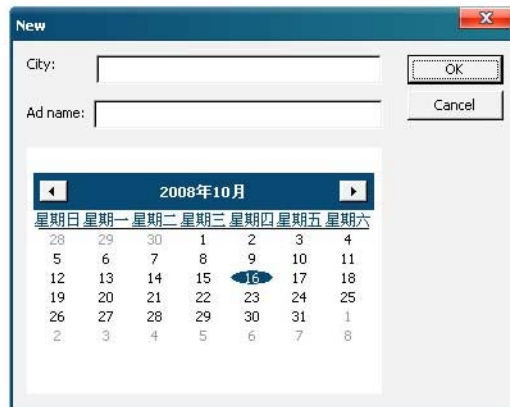
### 3.1 Soft summary:

XML software is the result of the Company's research and development of new products, in order to meet the needs of customers.

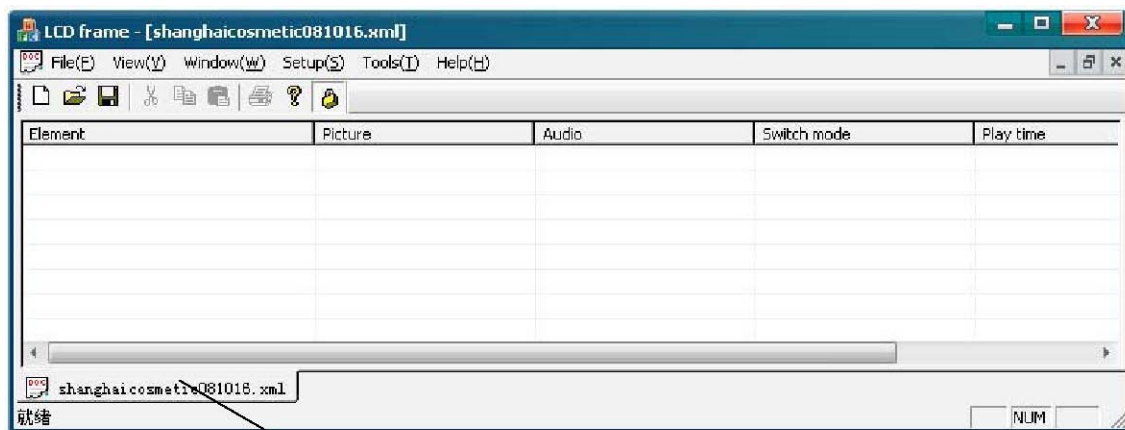
Software has realized the intelligent management of files. Use a software named "XmlEditor" to edit play lists. In a play list, setup a group and add items to it. Set a play time for each file. Change the Switch mode and Interval time of JPG files and change the Volume of files.

### 3.2 How to make a list :

- 1)Unzip the zipped file, put xmlEditor.exe and ijl11.dll in one folder ;
- 2) Double click "**XmlEditor.exe**" to run exmlEditor.exe ;



Input city and advertisement name, and date may be modification, enter main interface when you press "OK"

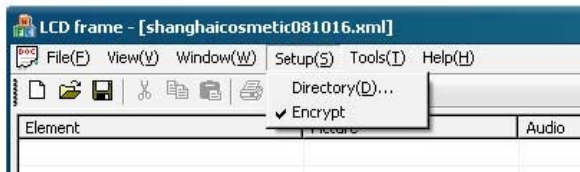


Play list's name

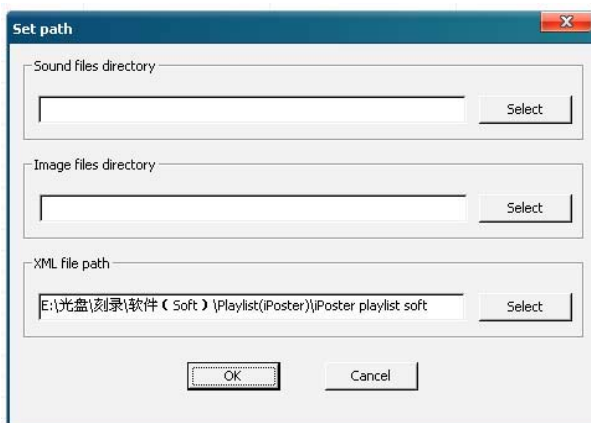
For example, Name of City: Shanghai, Name of Advertisement: cosmetic series, the name of the playlist will be Shanghai cosmetic series080919.xml. (Name of City + Name of Advertisement + Date)

3) Path:

Create a file folder for all JPEG advertisement programs. Create another file folder for all MP3 advertisement programs. **Note: NO subsidiary file folders in the JPEG or MP3 file folders.** Select the right path of image file and sound file before making playlist. Choose setup and the following image shows up.



Press Setup to enter the following menu---- Select right paths of image file, sound file and XML file, then press "OK".



4) Nomination Rules:

Files' should be named strictly according to the following rules, otherwise, the files might not be copied. Note: Nomination Rules

- 1. JPG files should be named as: City+ Advertisement name+date+ series number

For example: shanghaiOlay071025001.JPG

City: Maximum 12 characters

Advertisement: Maximum 30 characters

Time: 6 characters

Year (2 characters) : 00-99,

Month(2 characters): 01-12,

Date(2 characters) : 01-31

Series Number (3 characters): 000-999

2. Play list should be named as: City+ play list+Date

For example: shanghaiOlay071025.XML

xianChinaMobileMansion071109.XML

City: Maximum 12 characters

Playlist: Maximum 30 characters

Time: 6 characters (Created automatically by XML)

Year (2 characters) : 00-99,

Month(2 characters): 01-12,

Date(2 characters) : 01-31

The Play List is produced by XML and the last 6 numbers refer to the starting displaying date of the program.

For example: shanghaiOlay071025.XML means that this Olay advertisement will start to display automatically at 00:00 on Oct.25<sup>th</sup>, 2007.

xianChinaMobileMansion071109.XML means that this ChinaMobileMansion advertisement will start to display automatically at 00:00 on Nov.9<sup>th</sup>, 2007.

If the present time of Digital Poster is set between these two playlists, Digital Poster will display the playlist before the present time. When time moves on to the latter playlist, it will display the latter one automatically.

3. Music files should be named as: Music file name + series number

For example: Nature0001.MP3

Music file name: Maximum 40 characters

Series number: 4 numbers

Note: Rules for copying process

1. Rules for play list copy:

If the last 6 number of the name of the copied play list (DATE) is the same with a play list saved in the CF card, the old list in the card will be replaced by the newly copied list.

2. Rules for picture copy:

Picture files in the same name will not be copied. (The maximum number of pictures can be saved in CF card is 800.)

3. Rules for music copy:

Music files in the same name will not be copied. (The maximum number of music files can be saved in CF card is 200.)

4. Rules for fonts copy:

If there is a font in the CF card, the font won't be copied; otherwise, the font will be copied into the CF card.

5. Rules for copy capacity: 200M is the maximum capacity for a single copy. A note will be made if the capacity has been overtopped and the copy will fail.

4) Add groups

Click right button: -->ADD->ADD GROUP;



5) Add item: Click right button: -->ADD->ADD ITEM;

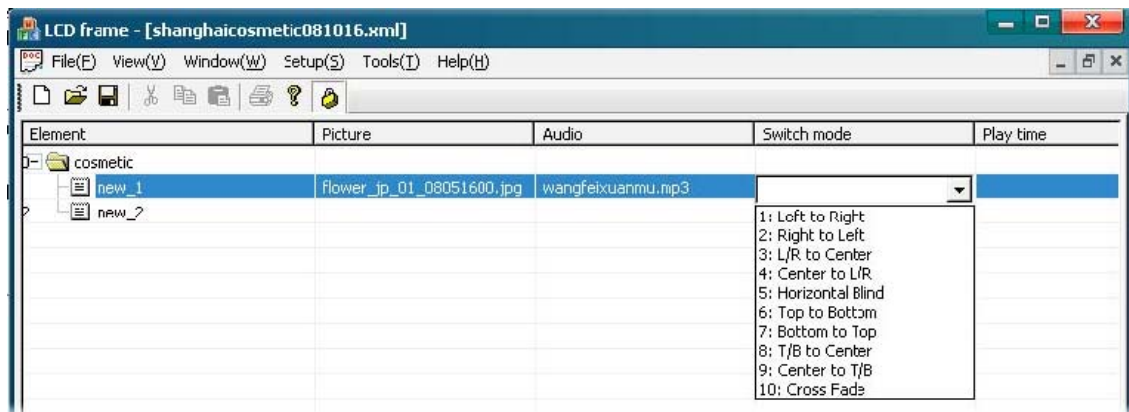
6) Rename "new group": Click right button "Rename", and then press "Enter" to type in new name.

7) Delete: Click right button "Delete", or press delete button on keyboard.

8) Add file: Double click the block in "new item" line under "File" and add files from the activated window.

9) Interval time: Click the mouse in "new item" line under "Interval" and press "Enter" to put in numbers, defining seconds for interval time of JPEG files. Interval of time: 3s--10000s.

10) Switch Mode:



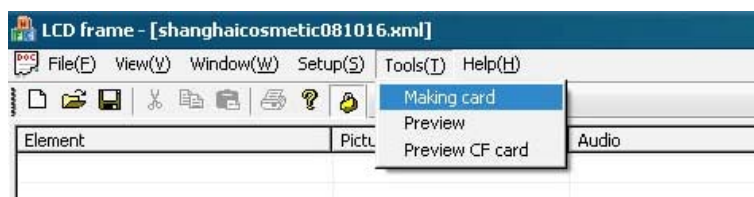
1. Left-to-Right
2. Right-to-Left
3. L/R-to-Center
4. Center-to-L/R
5. Horizontal blind
6. Top-to-Bottom
7. Bottom-to-Top
8. T/P-to-Center
9. Center-to-T/P
10. Cross fade

13) Preview :

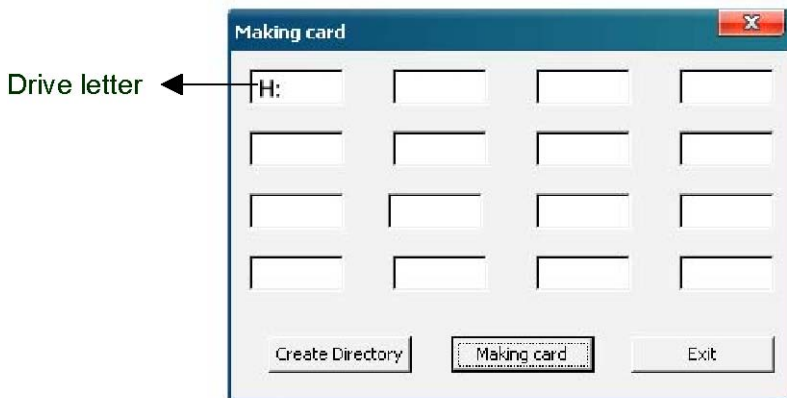


Press Preview to preview the advertisement. 14) Making card:

Inserting a USB disk or a card reader, then press Making card.



The following menu will appear.



Press Create Directory to set a directory, then press Making card to make a card. Insert the USB disk to Digital Poster to copy files into the built-in CF card.



## Chapter Four Installation

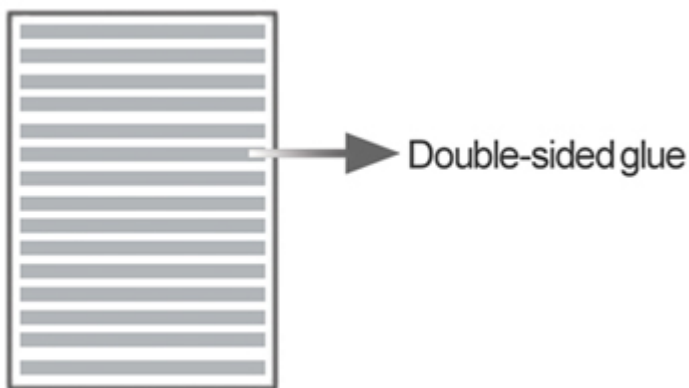
### 4.1 Installation

Step:

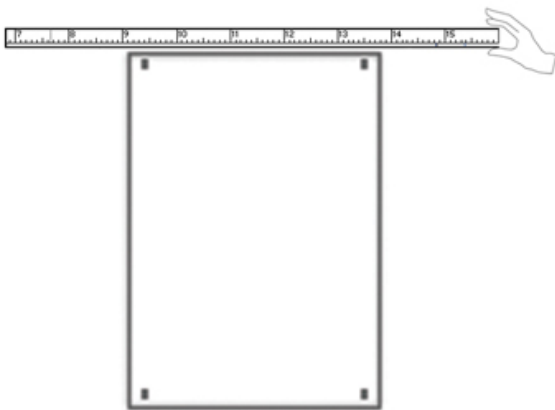
1. Open Package, take out Digital Poster and accessories.
2. Fix the wall-mount in a proper way.
3. Carefully check the power line to ensure that is good connected with the AC power
4. Place Digital signage on the wall, and plug in power

### 4.2 Paste Wall mount on Wall — Slick surface

1. Take out wall-mount, and cover the back of wall mount with double-sided glue



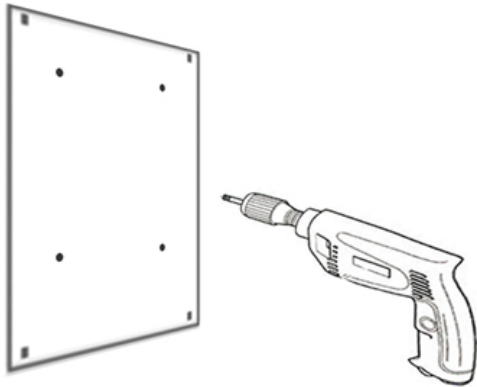
2. Mark on the wall, Please clean the wall with a cloth in advance.



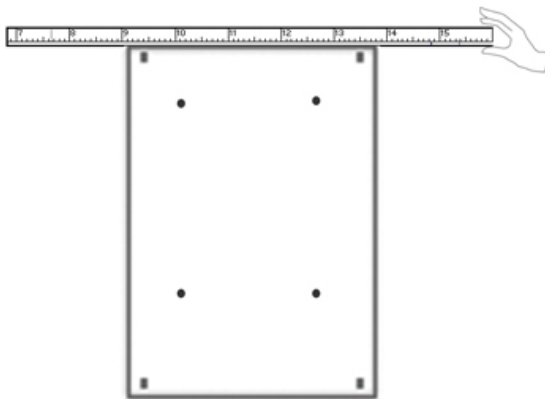
3. Tear double-sided glue's film, Place the wall - mounts on the wall softly, and presses it after confirmation of position
4. Please use silica gel around the wall mount to make it more stable.
5. And place the LCD player on the wall mount 4 hours later Four holes of wall-mount and hanging hole fully consistent

### 4.3.Hole Drilling—Rough surface

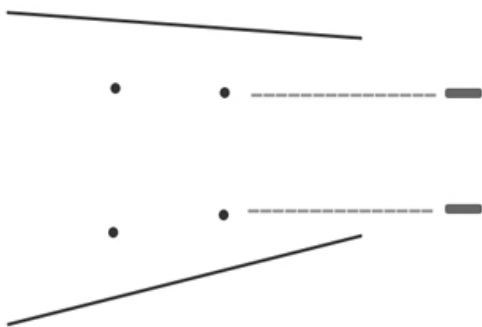
1. Take out wall-mount plate.
2. Draw the position of the hole to drill on the plate according to the need.



3. Drill on the plate with the impact drill.
4. Mark the plate position with level.



5. Mark the hole positions with level.
6. Drill the hole on the Wall.
7. Knock the wood tach into the hole.



8. Stick the double-faced tap behind the pale.
9. Mount the plate on the wall and then use the screw to strengthen it.
10. After mounting the plate, put the display on the plate and make sure the four screw holes are match each other.